

SAVE STRAITON FOR SCOTLAND

Say no to Linfairn – a giant industrial wind farm



After numerous delays WilloWind have applied for planning consent to erect 25 turbines, 126.5 meters (or 414 feet) high, across this stunning landscape. **Please help us to protect this beautiful valley from inappropriate development like this**



We have put all information relating to the application on our website and there are also copies in Maybole Library and South Ayrshire Council. There are over a thousand pages to the application. Our expert consultants are scrutinising the detail and will help us articulate our objections. With their guidance we will produce a proforma letter for your key local objections towards the end-date. In the meantime, the number of objections is also paramount and so we are producing weekly postcards for signature by everyone you know who cares. **Please remember one objection per person over 16.**

WilloWind have produced a newsletter which many local people will have received. They mention that they have listened to local concerns and reduced the number of turbines from 29 to 25. A map dated December 2011 clearly shows 25 turbines. By the time of the exhibition in January 2013 this had increased to 29. Cynics might argue that they always intended to have 25. Several local people have expressed concerns about various important matters but have had no communication from this developer. The turbines are located 2km from the village but this guideline is set to be increased to 2¹/₂km.

Traffic will come through Maybole and Crosshill and the developer has indicated that this will be *over 40,000 journeys*. The proposed route through Maybole is Kirkland Street, on to the Crosshill Road (B7023), along the B741 towards Straiton, then diverting across the field a few metres from the bridge over the Girvan, just outside Straiton. 100s of trips involving huge vehicles with police escorts are estimated for the turbine components alone. These are usually transported at night. A staggering total of 17,152 HGV trips are anticipated for deliveries of

stone, access track and hardstanding construction, plus 2,500 HGV deliveries of concrete, plus another 558 HGVs delivering cable etc. It is estimated the construction stage would last 2 years.

Time and again throughout the Planning Statement and Environmental Statement, the Developer admits local impact will be **high, significant and adverse**. They imply that it is justified given the greater good for the nation – ironically, we aim to Save Straiton for Scotland.

Last Date for Public Objections
8th November 2013

***See the back page for details
on how to object***

In the next few weeks we will be knocking on doors in villages and communities affected by this project. We'll be asking you to consider signing a letter of objection which will have pertinent points raised. Along with the letter will be post cards which we hope you can pass on to friends and family who would also welcome the opportunity to object.

Save on postage!

If you live locally we can collect post cards or you can drop them in postbox at The Buck in Straiton.

Right across the political spectrum our representatives have said **NO** to Linafairn



Brian Connolly, Independent Councillor said the **“impact on the landscape was totally unacceptable”** in reference to the Linafairn Wind Farm. He had never seen a proposal which would have such a huge impact on the landscape so close to a village.



Chic Brodie, SNP MSP said this about the Linafairn development **“the suggestion and proposals to surround Straiton and to ‘invade’ the valley may be a step too far.”**



Adam Ingram, SNP MSP said the Linafairn development was **“totally inappropriate.”**



Jim Hume, Lib Dem MSP said in relation to the Linafairn development **“Local circumstances must be given priority when applications for wind farms are being considered.”**



Graeme Pearson, Labour MSP said **“there is something special about what we’ve got here and we shouldn’t destroy it.”** This was in relation to the Linafairn area.



Sandra Osborne, Labour MP said she was **“utterly and totally opposed”** to the Linafairn development.



William Grant, SNP Councillor said **“Wind turbines at Linafairn and down the valley shouldn’t be built.”**



Struan Stevenson, Conservative MEP said the proposals were **“unwarranted”** and an **“absolute tragedy.”**

Contact details for representatives

Brian Connolly, Councillor
South Ayrshire Council, County Buildings
Wellington Square, Ayr KA7 1DR
brian.connolly@south-ayrshire.gov.uk

Chic Brodie MSP
The Scottish Parliament Edinburgh EH99 1SP
Chic.Brodie.msp@scottish.parliament.uk

Adam Ingram MSP
Office 1, 4 The Square, Cumnock KA18 1BG
adam.ingram.msp@scottish.parliament.uk

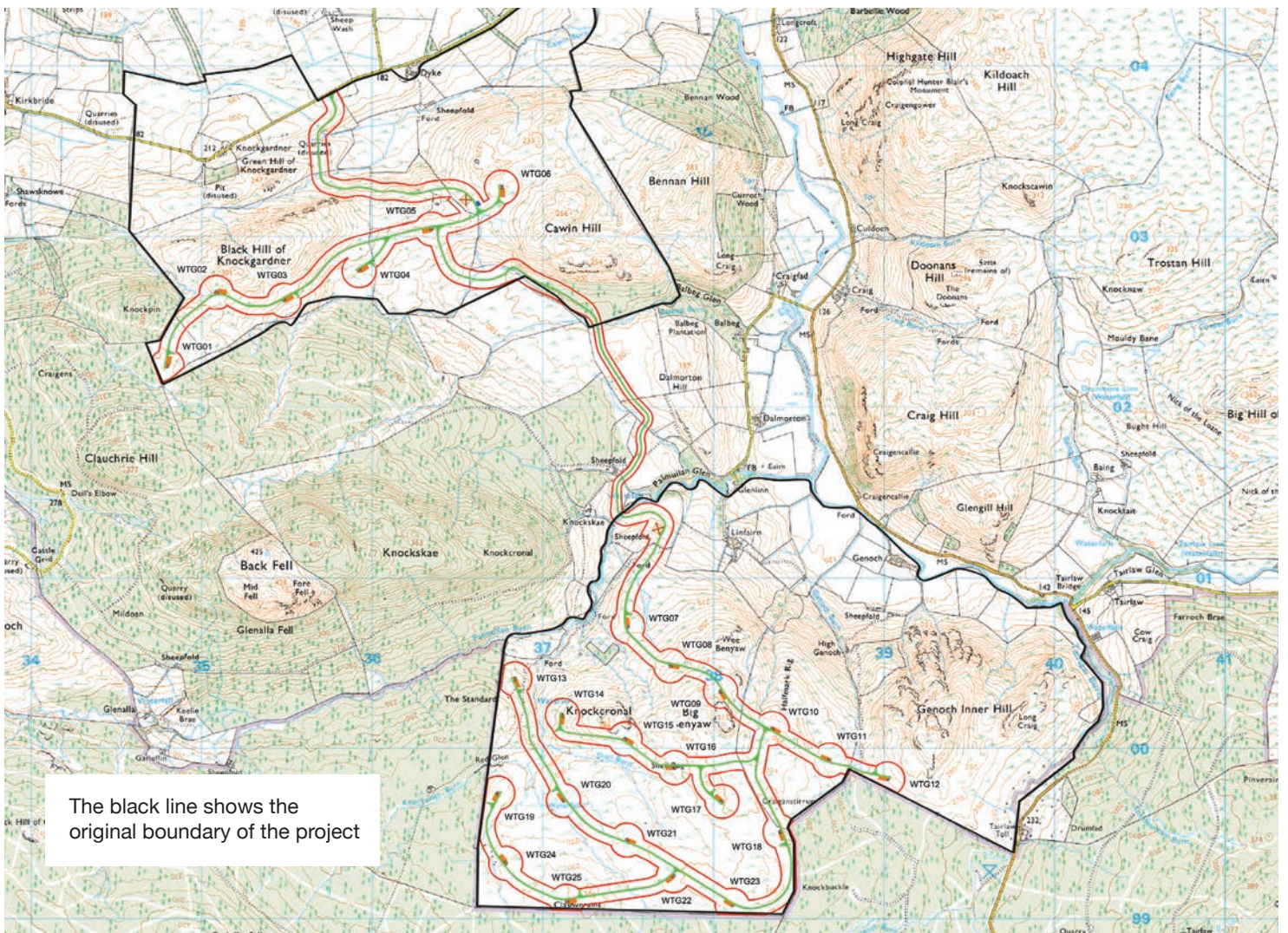
Jim Hume MSP
The Scottish Parliament Edinburgh EH99 1SP
jim.hume.msp@scottish.parliament.uk

Graeme Pearson MSP
The Scottish Parliament Edinburgh EH99 1SP
Graeme.Pearson.msp@scottish.parliament.uk

Sandra Osborne MP
139 Main St, Ayr KA8 8BX
sandra.osborne.mp@parliament.uk

William Grant, Councillor
South Ayrshire Council, County Buildings
Wellington Square, Ayr KA7 1DR
william.grant@south-ayrshire.gov.uk

Struan Stevenson MEP
Scottish Conservative and Unionist Party
67 Northumberland Street Edinburgh EH3 6JG
struan.stevenson@europarl.europa.eu

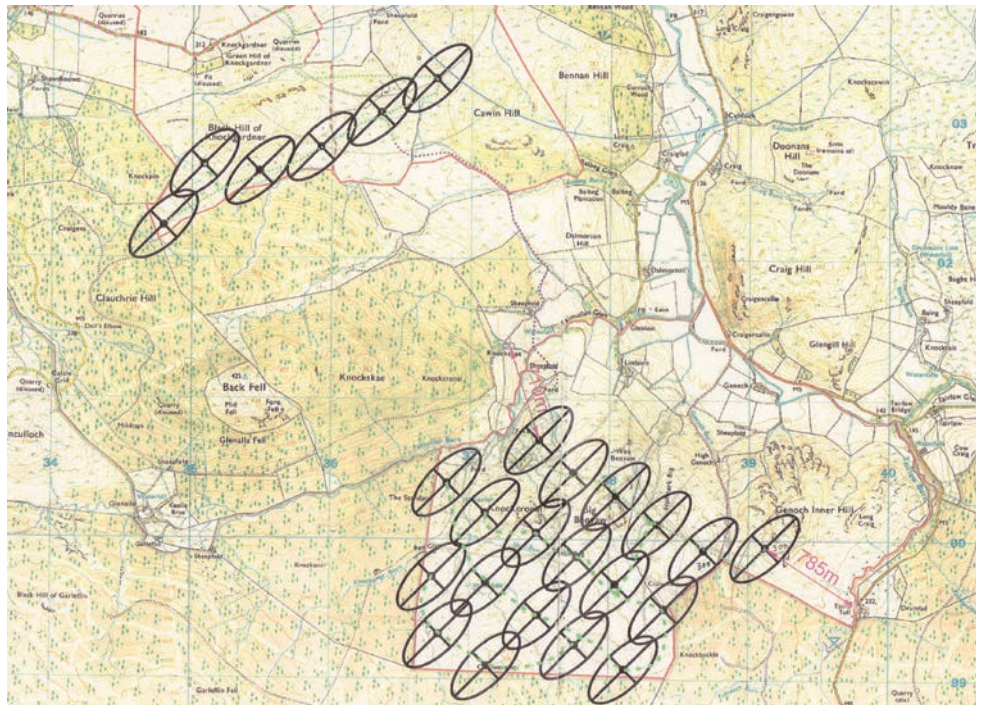


The above map shows the layout of the proposal. The red line is the boundary of the development. This has altered from previous maps where it showed two large areas: a crude attempt to disguise the fact that this is really two separate and far smaller developments connected by a long access track. If defined as two individual farms, they would only be considered by the South Ayrshire and not the Government.

The access is appalling and clearly a quickly shuffled arrangement to avoid the original plan of going through Straiton.

The map on the right is an earlier version and some of the positions have changed very slightly. The distance from turbine to Tairlaw Toll is only 785m and Knockskae a mere 710m. Many other homes up and down the valley lie within 1km of the project.

The impact on the landscape is tremendous with all 25 turbines being visible from Troon. The wireframe and photomontages supplied by WilloWind leave a lot to be desired: they are difficult to work with and are seemingly randomly selected viewpoints, but it is clear that the project will be highly visible from key areas, such as the Merrick wild land.



The Environmental Statement (ES) highlights that within 5km of the Project **'significant visual impacts would be most likely to occur'**, yet of the 20 viewpoints selected, only 4 are within 5km of the project, and 3 of those are from the roadside and car parks. This is not a 'representative cross section of potential visibility and impact'. Had this been the case, the applicant might have

included photomontages from some of the peripheral hills surrounding the valley, and the more widely used local paths.

If WilloWind are confident that users of these paths will not have adverse visual impact, then why not demonstrate this by taking representative photographs from more local viewpoints?

SAVE STRAITON FOR SCOTLAND

PROTECTING STRAITON, NEIGHBOURING COMMUNITIES AND SURROUNDING COUNTRYSIDE

Linfairn Windfarm is a Section 36 planning application that has now been submitted directly to the Energy Consents Unit part of the Scottish Government. Copies of the planning documentation are available at the South Ayrshire Council Planning Offices and Maybole Library. The documents can be viewed online: <http://savestraitonforscotland.com/linfairn-planning-submission/>

All objections to this proposal must be made by the 8th Nov 2013.

South Ayrshire Council do not decide the outcome of this proposal however they are a statutory consultee and have approximately 4 months to make their recommendation. This may be influenced by the number of local objections they see for the proposal.

It is vitally important that South Ayrshire Council are aware of the numbers of people who wish to object to this proposal.

WHAT SSFS WILL DO

- We are working closely with our professional advisors to provide key objection points for local residents
- There will also be general and visitor letter templates and proforma postcards delivered to your door and available at The Buck in Straiton
- Online templates and objection topics will be available via <http://savestraitonforscotland.com/>

YOUR ROLE

- Choose Objection Mode – email, postcard, letter or online
- Consider adding your own comments around an area that concerns you. For example Crosshill and Maybole residents might be concerned about 40,000 extra vehicle journeys predicted to pass through during the construction phase.

Straiton and Kirkmichael residents may be alarmed by the significant local impact as described by developer in terms of landscape, ecology and visual amenity, let alone other concerns such as noise.

Whatever it is, it will make your objection stand out a bit more.

- Take responsibility: take **10 – 20 Postcards** home for considered signature by friends, family, work colleagues etc. This could turn 200 objections into 4,000 – hard to ignore if you are an elected Councillor or Minister.
- **Send the objections to the addresses below, drop them off in The Buck, or let us know and we can pick them up for you.**

Some points to consider

- Central Consents do not make reference numbers available, so you need to be descriptive in the letter or email subject. For example: **RE: WilloWind Energy – Planning Application for Linfairn Windfarm; located near Straiton, South Ayrshire.**
- **Be aware that your name, address, postcode and date will be required for emails and letters.**
- **One email or letter per individual. If one email or letter is sent on behalf of 2 or more people it only counts as one objection.**
- Please feel free to contact SSFS if you have any queries or wish to draw attention to a certain point.
- If, having objected you think you missed something, please let us know even if it's after the 8th November.

Save Straiton for Scotland



<http://savestraitonforscotland.com>

Save Straiton for Scotland Limited is a company limited by guarantee. Registered in Edinburgh No. SC442516.
Registered office: 18 Main Street, Straiton, South Ayrshire KA19 7NF

If you wish to write your own objection rather than use template letters and postcards please send to the following:

By email to:
The Scottish Government,
Energy Consents Unit mailbox at
representations@scotland.gsi.gov.uk

also cc South Ayrshire Council at
planning.development@south-ayrshire.gov.uk

Or post your letter to the following address:
Scottish Government Energy Consents Unit
4th Floor, 5 Atlantic Quay
150 Broomielaw
Glasgow G2 8LU

cc South Ayrshire Council
Planning Service
Burns House, Burns Statue Square
Ayr KA7 1UT