

Annexes (figures)



Figure 1

***Rubus nitidus* Weihe et Nees subsp. *laetevirens* Sudre ex H. Marcaillou et A. Marcaillou**  
 (Soc. Hist. Nat. Autun, 15, p. 256, 1903)  
 Lectotype BORD\_SU\_001\_06



Figure 2

***Rubus plicatus* Weihe et Nees var. *acuminatus* Sudre (Batoth. Eur., 3, p. 38, 1905)**  
 Lectotype BORD\_SU\_002\_063



Figure 3  
***Rubus plicatus* Weihe et Nees var. *glandulifer* Sudre** (*Rubi eur.* p. 19, 1908)  
 Lectotype BORD\_SU\_002\_108

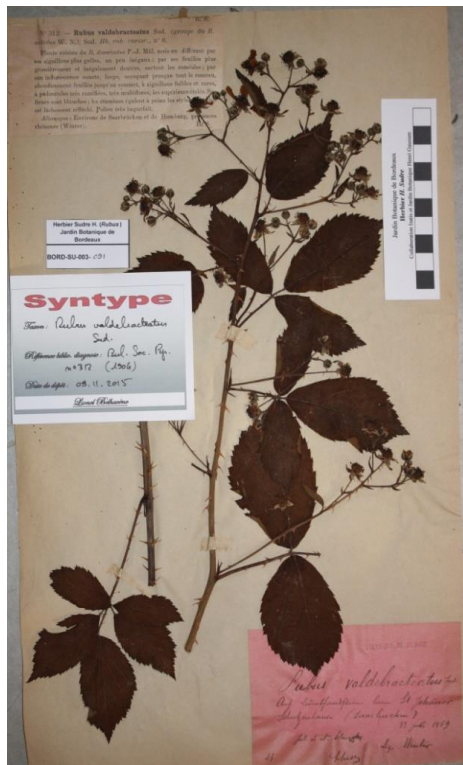


Figure 4  
***Rubus valdebracteatus* Sudre** (*Bull. Ass. Pyr. Ech. Plantes* 14, p. 7, 1904)  
 Lectotype BORD\_SU\_003\_091 et BORD\_SU\_003\_091\_B



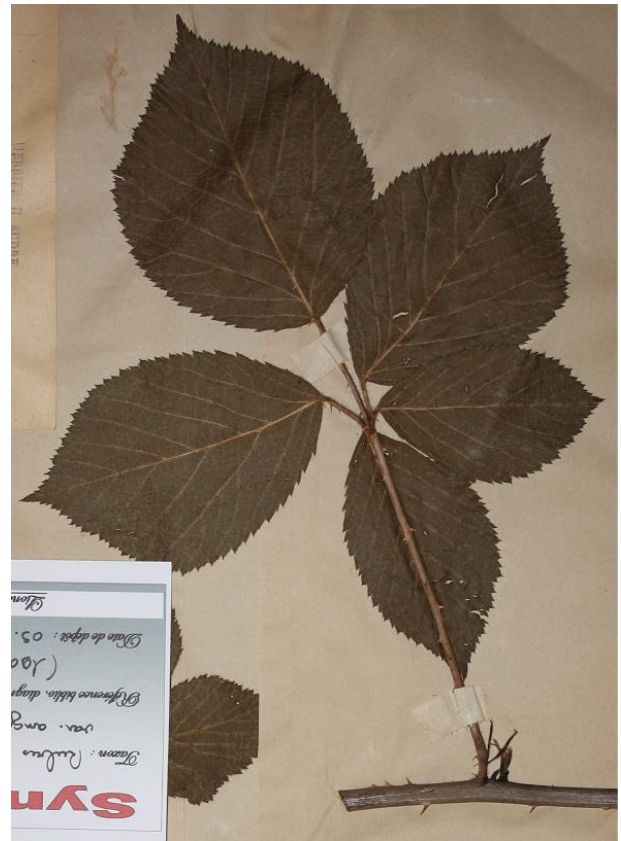
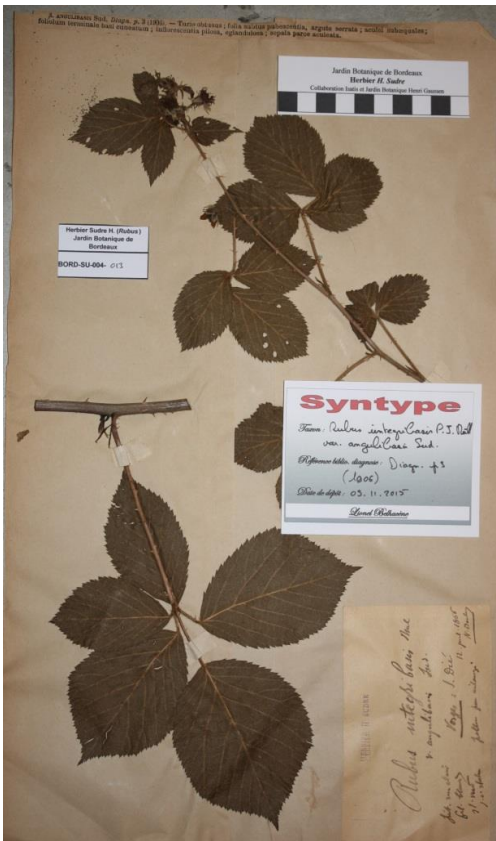


Figure 7

***Rubus integrifolius* P. J. Müll. ex Boulay var. *angulibasis* Sudre** (*Bull. Soc. Études Sci. Angers*, 35, p. 3, 1906)  
Lectotype BORD\_SU\_004\_013

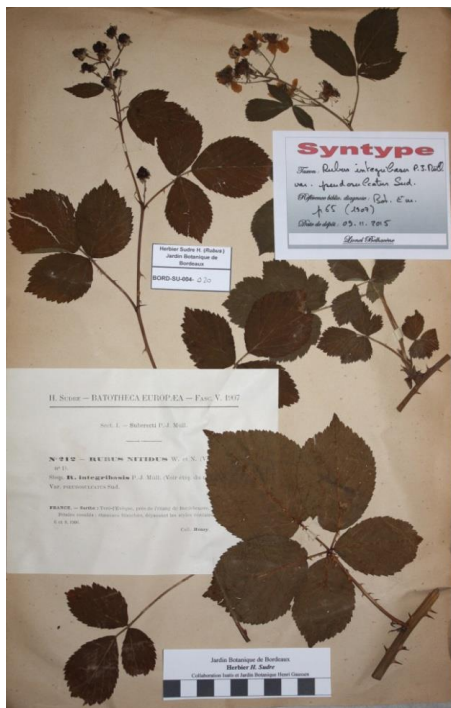


Figure 8

***Rubus nitidus* Weihe et Nees var. *pseudosulcatus* Sudre** (*Batoth. Eur.* 5, p. 65, 1907)  
Lectotype BORD\_SU\_004\_020 pro parte : Primocanne et feuille caulinaire  
Épitype BORD\_SU\_004\_020 pro parte : Inflorescence fleurie



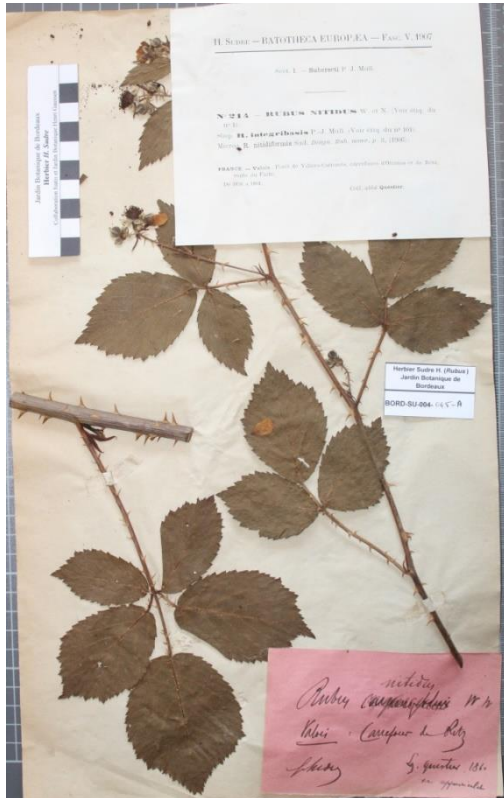


Figure 11

***Rubus nitidus* Weihe et Nees microgene *nitidiformis* Sudre** (*Batoth. Eur.* 5, p. 66, 1907)  
Lectotype BORD\_SU\_004\_045\_A



Figure 12

***Rubus indutiformis* Sudre, pro hybr.** (*Rubi eur.*, p. 21, 1908)  
Lectotype BORD\_SU\_004\_092\_A et BORD\_SU\_004\_092\_B

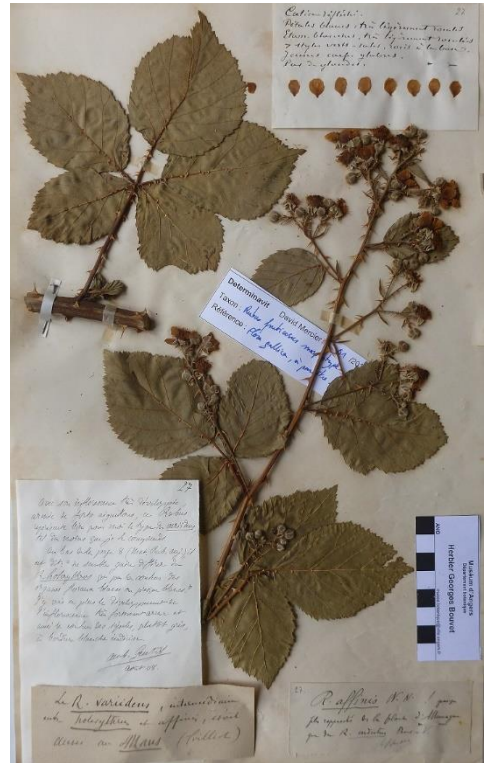


Figure 13

*Rubus affinis* Weihe et Nees subsp. *variidens* Sudre et Bouvet (*Bull. Soc. Et. Sci. Angers*, 36, p. 8, 1907) :  
Holotype 2007.1661



Figure 14

*Rubus affinis* Weihe et Nees subsp. *serraticuspis* Sudre (*Bull. Soc. Bot. Fr.*, 52, p. 340, 1905)  
Holotype BORD\_SU\_004\_111