



CITY OF SAN DIEGO VOUCHER SHEET

Species: *Schisturella cocula*
Authority: J.L. Barnard, 1966
Common Synonyms:

Taxon: Gammaridea: Lysianassidae
Date: February, 1995
By: K. Barwick
Voucher Specimen(s):

Station	Date	Storage Location	Voucher#
B13(2)	7/26/94	Main	C-336

Characters:

- Gnathopod 2 palm straight or slightly concave
- Gnathopod 1 dactyl long and curved
- Uropod 2 inner ramus incised

Illustrations on reverse

Full Description: (J.L. Barnard, 1966)

Third pleonal epimeron with posteroventral tooth; palm of gnathopod 1 scarcely distinct from posterior margin of article 6; lobe of upper lip tapering; eyes present.

Related Species:

This species superficially resembles *Hippomedon* spp. The palm of gnathopod 1 of *Hippomedon* spp. is convex. The palm of *S. cocula* is straight to slightly concave. The lateral notch formed by the hook on epimeron 3 is rounded in *S. cocula*. *S. cocula* can also be confused with *Anonyx liljeborgi*, *Orchemene decipiens* and *Aruga* spp. The most prominent feature used to separate them is the shape of the dactyl on gnathopod 2. It is more prominent in *S. cocula* than the afore mentioned species.

Comments:

This voucher sheet is based on only a single specimen collected.

References:

Barnard, J.L. 1966. Allan Hancock Pacific Expeditions. Allan Hancock Foundation. 27

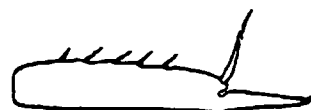
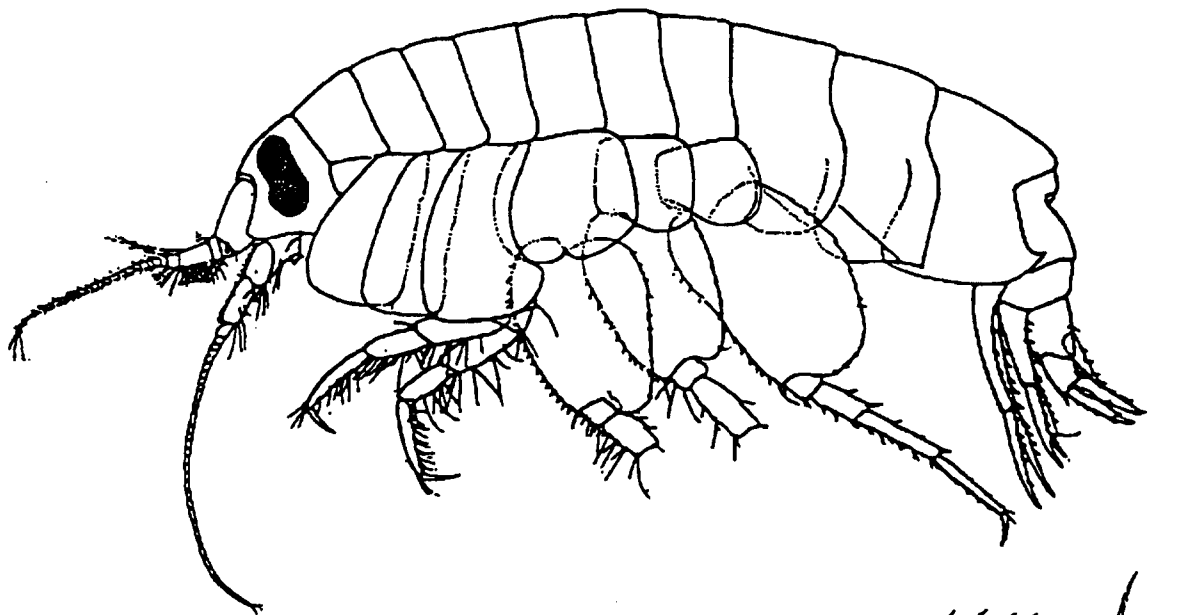
(over)

Species: *Schisturella cocula*

Taxon: Gammaridea: Lysianassidae

Date: February, 1995

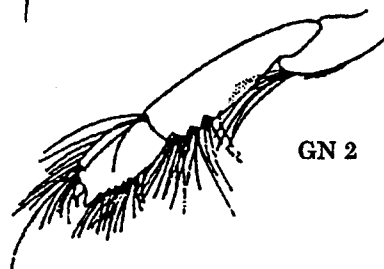
Illustrations: (J.L. Barnard, 1966)



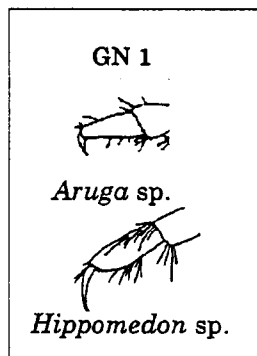
Inner rami Uropod 2



GN 1



GN 2



GN 1

Aruga sp.

Hippomedon sp.

Distribution— (J.L. Barnard, 1966)

Pt. Loma: B13, 380ft.

Geographic: Pt. Conception - Pt. Loma

Habitat: