

**Instructions for making seed pot from a paper tube**

**Watch the video tutorial on our YouTube channel at:**

<https://www.youtube.com/c/SouthCentralRegionalLibrary>

**Materials needed:**

Paper tubes (from toilet rolls or paper towels)

Scissors

Ruler

Marker or pencil

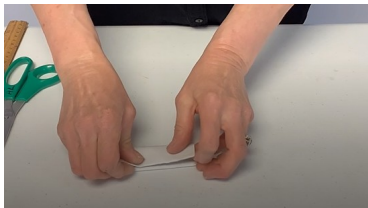
Saucer or cup of water



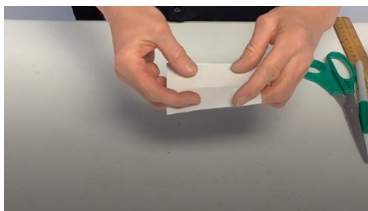
Flatten the paper tube and crease the folds.



Fold the tube in half lengthways and crease the fold.

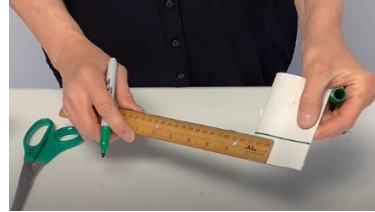


Fold the tube back along the same fold and crease. You now have four folds, making a square.



Lay the tube flat and position a ruler along the bottom edge and draw a line the width of the ruler on the tube with a marker. Turn

the tube over and draw another line on the other side.



Cut along each fold up to the marked line.



Fold all four flaps back.



Dip the flaps only in water.



Fold the flaps together and leave on a flat surface to dry. When the pot has dried, the bottom will seal to better hold soil and seed.

