



Fallbrook Land Conservancy

Overview of FLC Lands & Management Objectives

Karla Standridge
1815 South Stage Coach Lane
Fallbrook, CA 92028
(760) 728-1332



-
- Sound Finances
 - Ethical Conduct
 - Responsible Governance
 - Lasting Stewardship
-



History & Overview

- Founded in 1988
- First acquisition in 1990
- Current Fee Owned: **2,118 acres**
 - 14 Preserves
 - Most permanently restricted
- Current Conservation Easements: **995 acres**
 - 7 Properties
- Current Managed Properties: **17 acres**
 - 1 Property



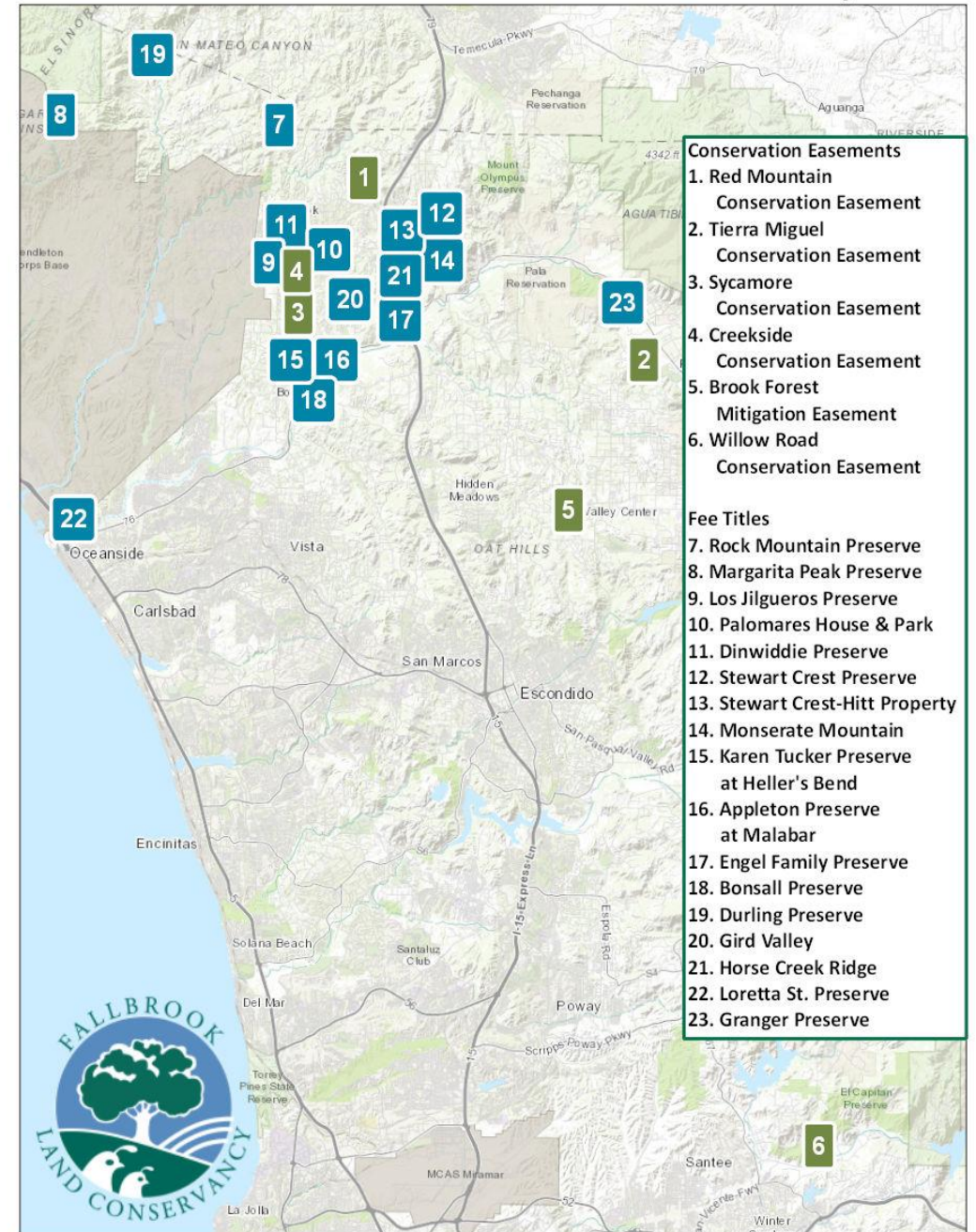
Fallbrook Land Conservancy

Conservation Easement:

- Red Mountain – 566.81 acres
- Tierra Miguel (Ag) – 84.91 acres
- Sycamore – 2.60 acres
- Creekside – 6.35 acres
- Brook Forest – 224.2 acres
- Willow Road – 71.06 acres

Owned:

- Rock Mountain Preserve – 77.95 acres
- Margarita Peak Preserve – 1206.21 acres
- Los Jilgueros Preserve – 43.50 acres
- Palomares House – 1.18 acres
- Dinwiddie Preserve – 14.57 acres
- Monserate Mountain Preserve – 352.09 acres
- Karen Tucker Preserve at Heller's Bend – 48.55 acres
- Appleton Preserve – 22.98 acres
- Engel Family Preserve – 10.37 acres
- Bonsall Preserve – 27.36 acres
- Durling Preserve – 184 acres
- Gird Valley Preserve – 47.74 acres
- Loretta Street Preserve – 35.52 acres
- Granger Preserve – 54.10 acres





Rock Mountain Preserve

- **CSS, Chaparral, Riparian (Bryant's Creek)**
- **Mountain Lion**
- **Coast Horned Lizard**





Heller's Bend Preserve

- Primarily CSS
- Riparian – Ostrich Farm Creek
- NRCS & UFWS Partners Program for restoration





Los Jilgueros Preserve



- Wetland
- Riparian
- CSS
- Grassland



Margarita Peak Preserve

- Purchased with REPI funding, TPL match
- Chaparral
- Oak Woodland
- Roblar Creek
 - Mountain lion scat

Table 1: Sensitive Plant Species Observed at the Margarita Peak Preserve

CNPS List	Common Name	Scientific Name
1B.1	Rainbow manzanita	<i>Arctostaphylos rainbowensis</i>
1B.3	Ramona horkelia	<i>Horkelia truncata</i>
4.2	graceful tarplant	<i>Holocarpus virgatus ssp. elongatus</i>
4.3	chaparral pea	<i>Pickeringia montana var. tomentosa</i>
4.3	Fish's milkwort	<i>Polygala cornuta var. fishiae</i>
4.3	Parry's green-gentian	<i>Swertia parryi</i>







Loretta Street Preserve

- Purchased with REPI funding, TPL, Coastal Conservancy funds
- Supports CAGN & LBV





Loretta Street Preserve





Monserate Mountain Preserve

- Heights of Pala Mesa Mitigation Bank





Monserate Mountain Preserve

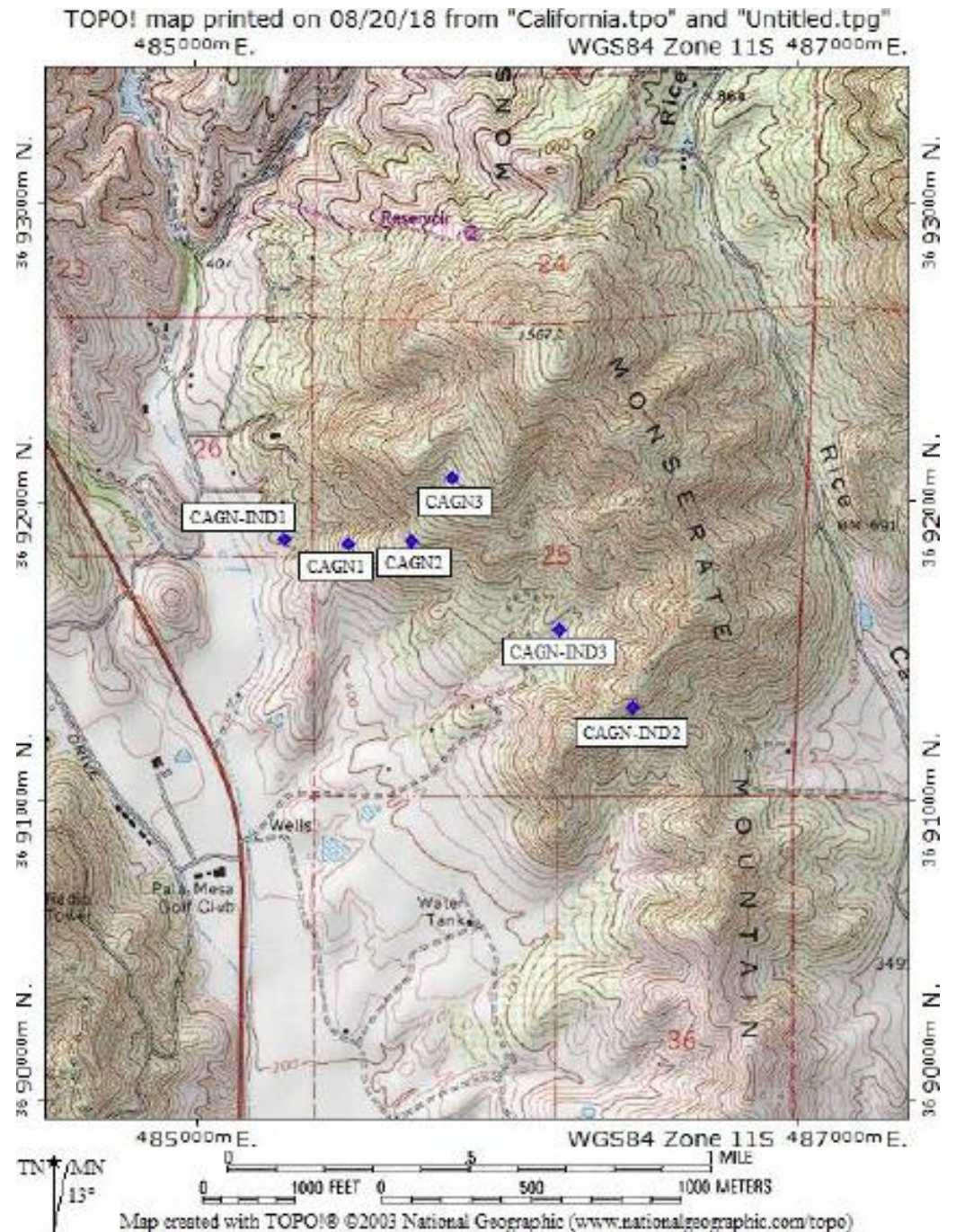
- 2007 Rice Canyon Fire
- NRCS & USFWS
Partners funding





MMP CAGN

- July 23 – Aug 16 2018
 - 3 pairs
 - 3 individuals
- March 23 – Jun 22 2015
 - No observations
- Oct 29 – Nov 15 2012
 - Single male observed





Funding

Acquisitions

- Land donors
- Bequests
- REPI
- TPL
- EEMP

Restoration

- NRCS
- USFWS
Partners
- EMP
- SD County
- Sierra Club
- Local Service
Organizations





Questions?

