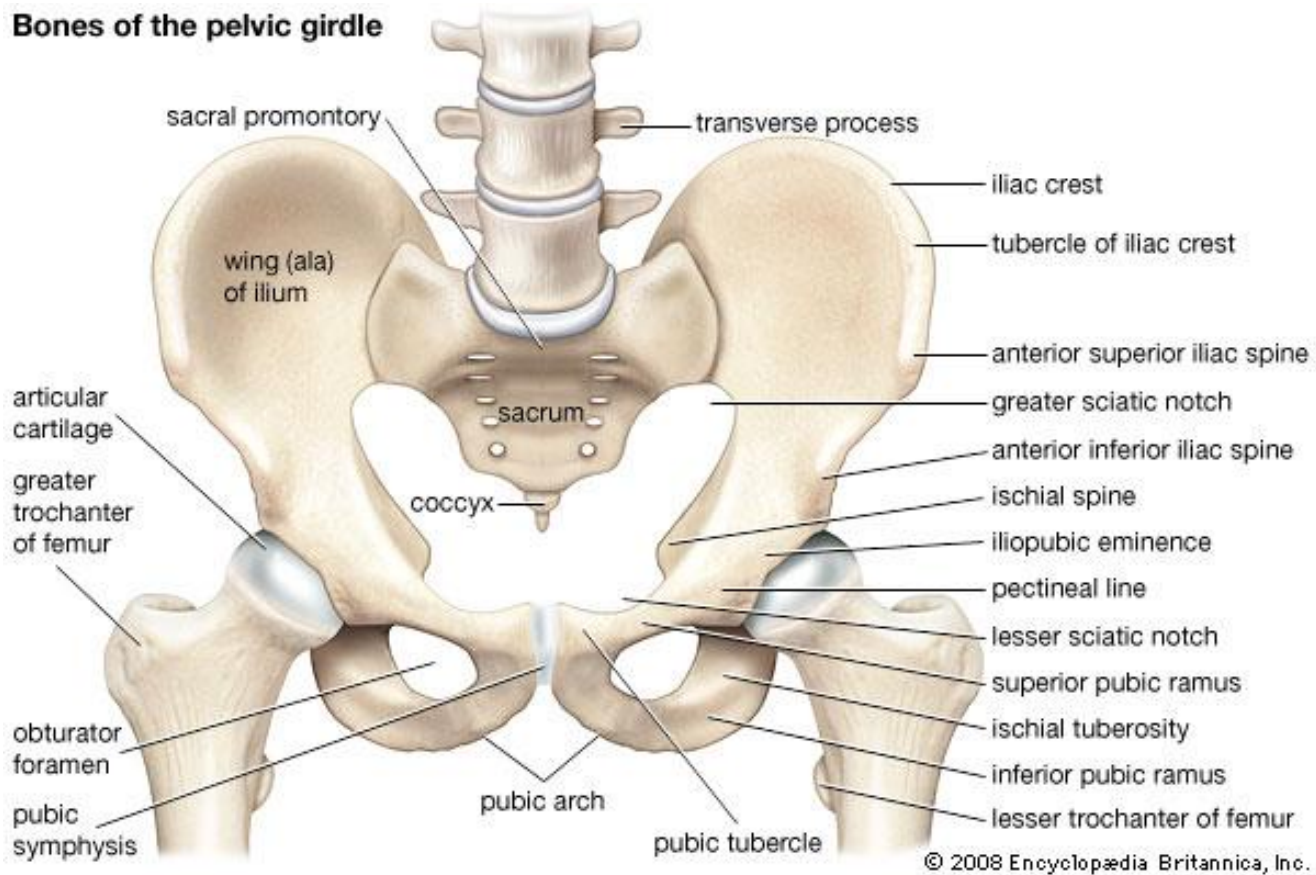


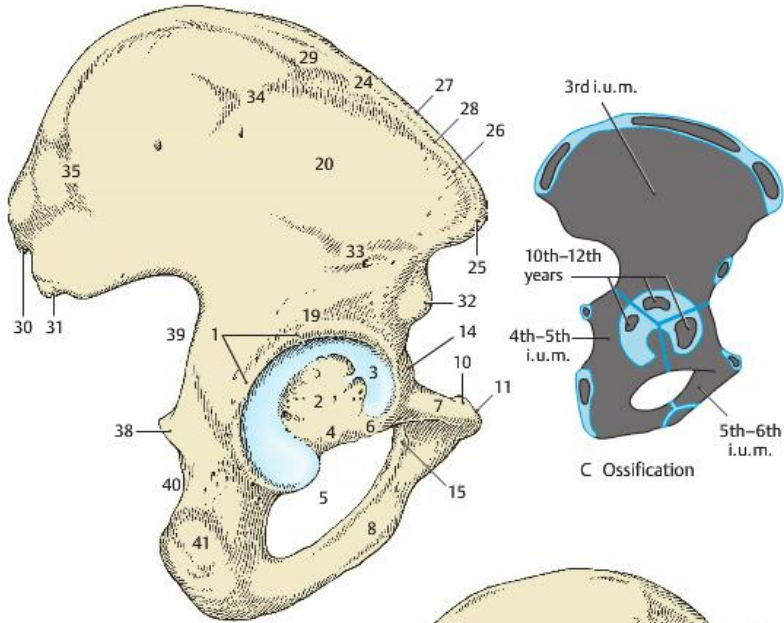
Pelvic girdle

Bones of the pelvic girdle

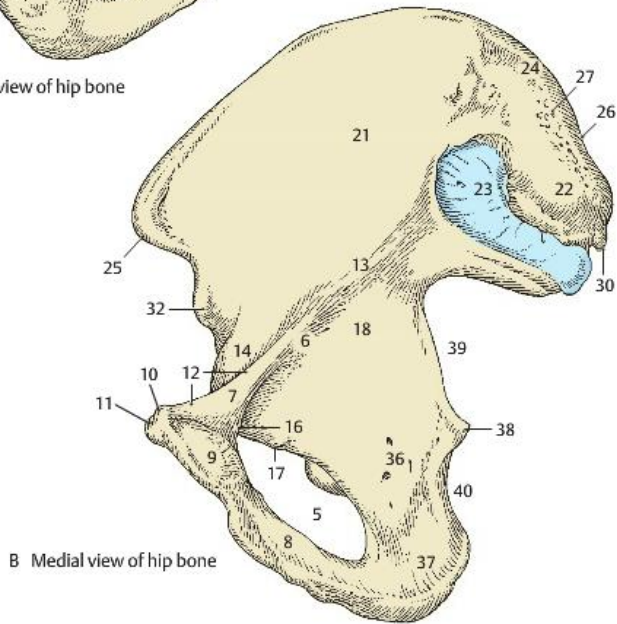


- Two pelvic bones (left and right) articulating with the axial skeleton via the sacrum.
- The pelvic bones are each made up of three bones:
 - ilium
 - ischium
 - pubis
- These bones are fused by puberty to form the pelvic bone.
- The pelvic girdle can only move as a unit (L and R shoulder girdles can move independent of each other)

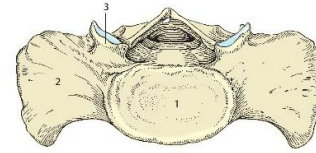
BONES



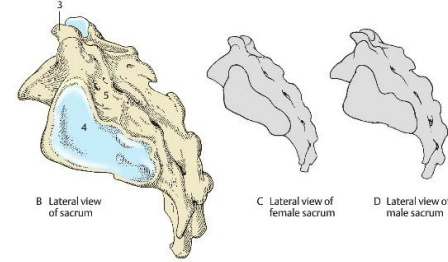
A Lateral view of hip bone



B Medial view of hip bone



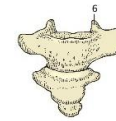
A Superior view of sacrum



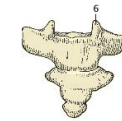
B Lateral view of sacrum

C Lateral view of female sacrum

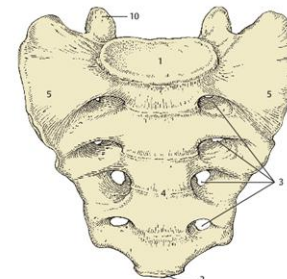
D Lateral view of male sacrum



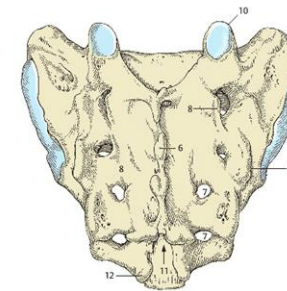
E Anterior view of coccyx



F Posterior view of coccyx



A Sacrum from front



B Sacrum from back

SACRAL JOINTS

LUMBOSACRAL JOINT

(synchondrosis, syndesmosis)

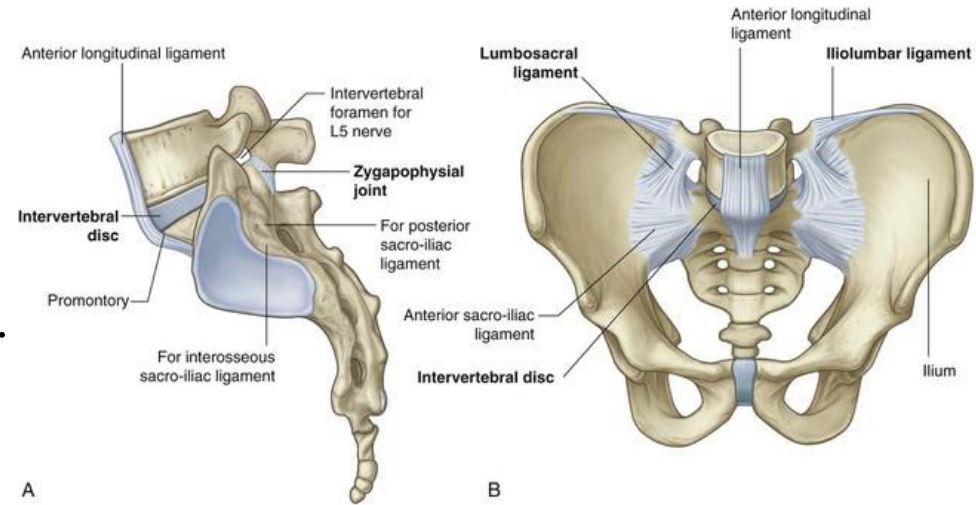
intervertebral disc

anterior and posterior longitudinal ligg.

ligg. flava

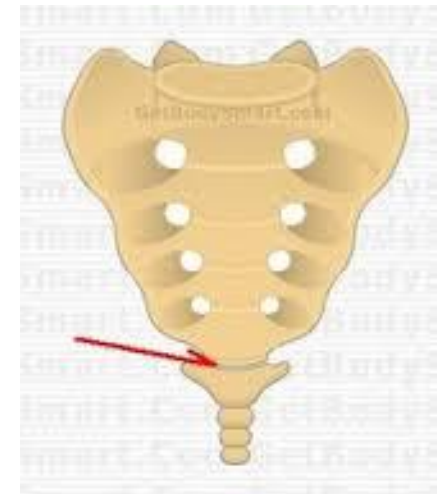
interspinal and supraspinal ligg.

lig. iliolumbale (stabilizes the joint)



ZYGAPOPHYSIAL JOINT

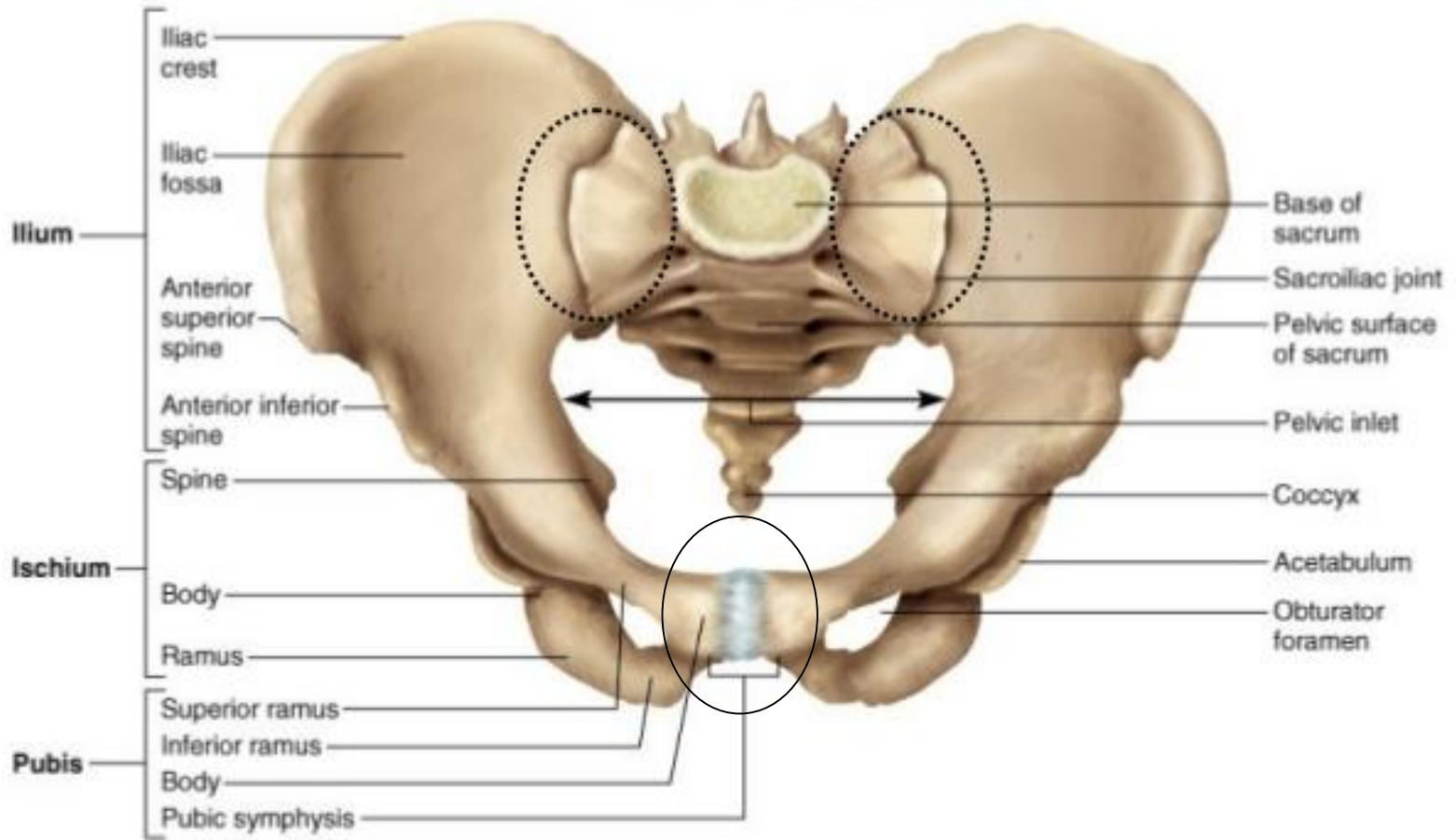
Synovial joint between the 5th lumbar vertebra and the correspondig articular process of the sacrum



SACROCOCYGEAL JOINT

(SYNCHONDROSIS)

SACROILIAC JOINTS



(a) Anterosuperior view

Pubic symphysis

1. Sacroiliac joints: pelvic bones + sacrum

auricular surfaces of sacrum and ilium

hyalin cart. superficially, fibrous cart. deeply!

Capsule:

tight, dense, limited articular cavity

Ligaments:

- ventral sacroiliac ligament (weak)
- dorsal sacroiliaca ligament (strong)
- interosseal sacroiliac ligament (strong)

2. Pubic symphysis

- symphyseal surface of pubis and an interpubic disc

- synchondrosis, fibrocartilage

Not a true joint, however, it may contain a „cavity” within the disc

Ligaments: superior pubic lig.

(inf.!) arcuate pubic lig.

SACROILIAC JOINTS

Sacroiliac ligg.

dorsal

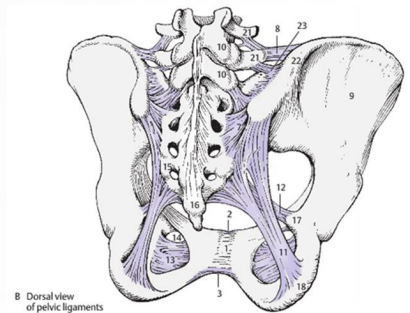
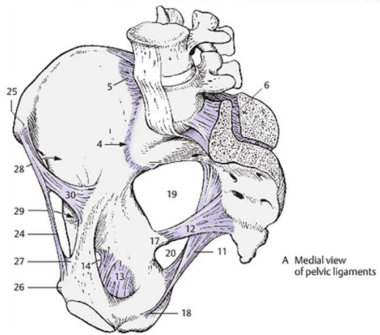
interosseal

ventral

Hyalin cart.

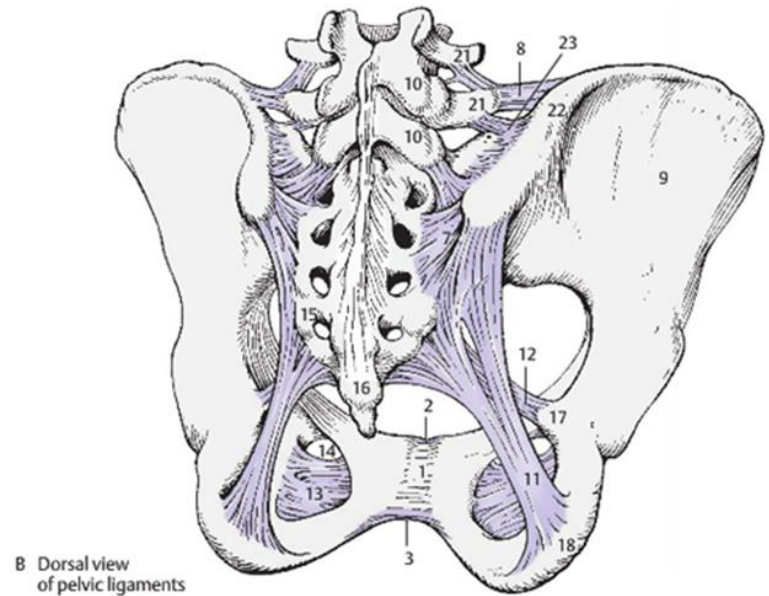
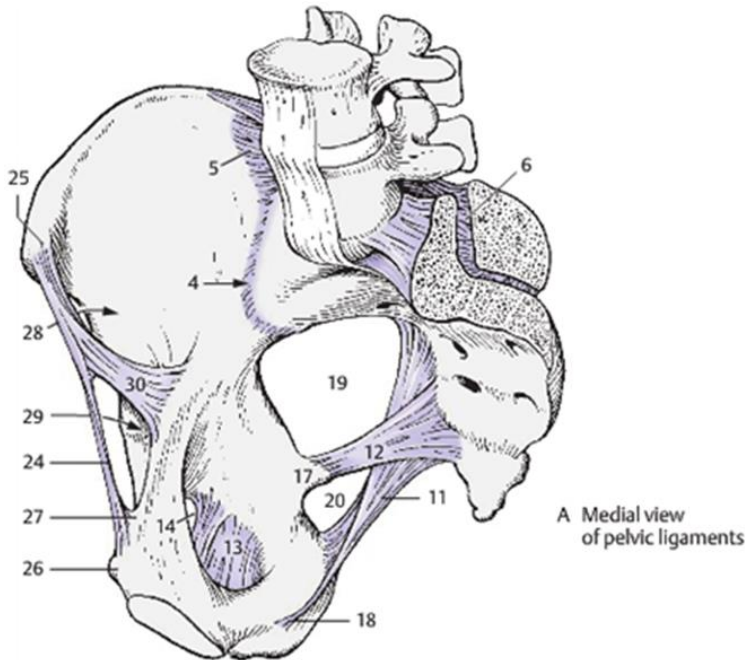
Fibrous cart.

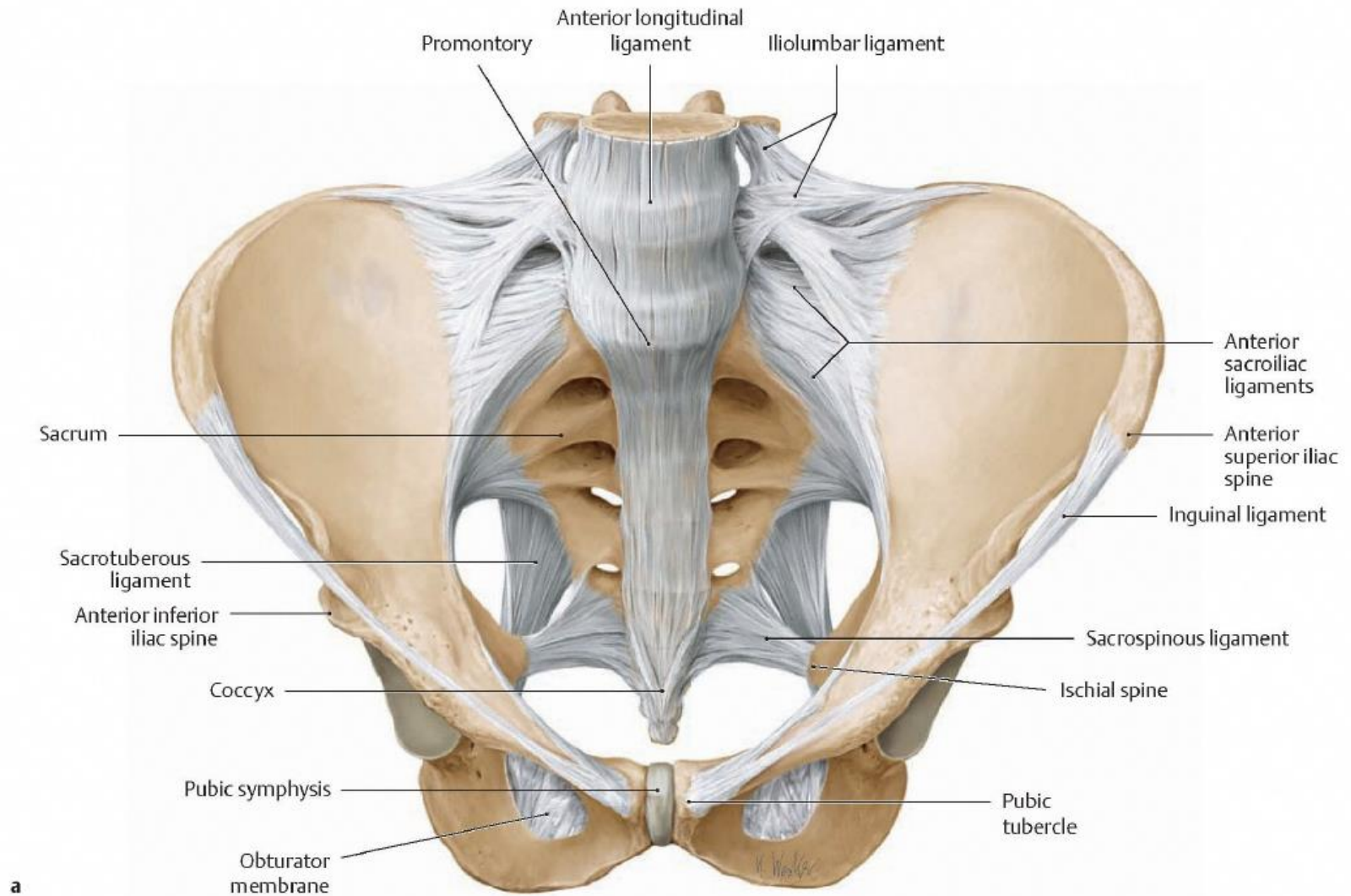
Pubic symphysis



Ligaments of the pelvis

- *sacrospinous ligament*
- *sacrospinous ligament*
(continues as *falciform process*)
- *obturator membrane*
- *inguinal ligament*
(*TENDON of the external oblique abdominis m.!!*)





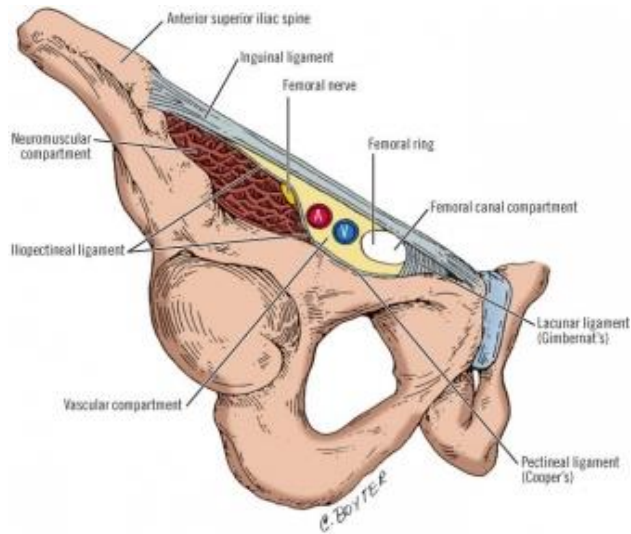
A Ligaments of the male pelvis

a Anterosuperior view.

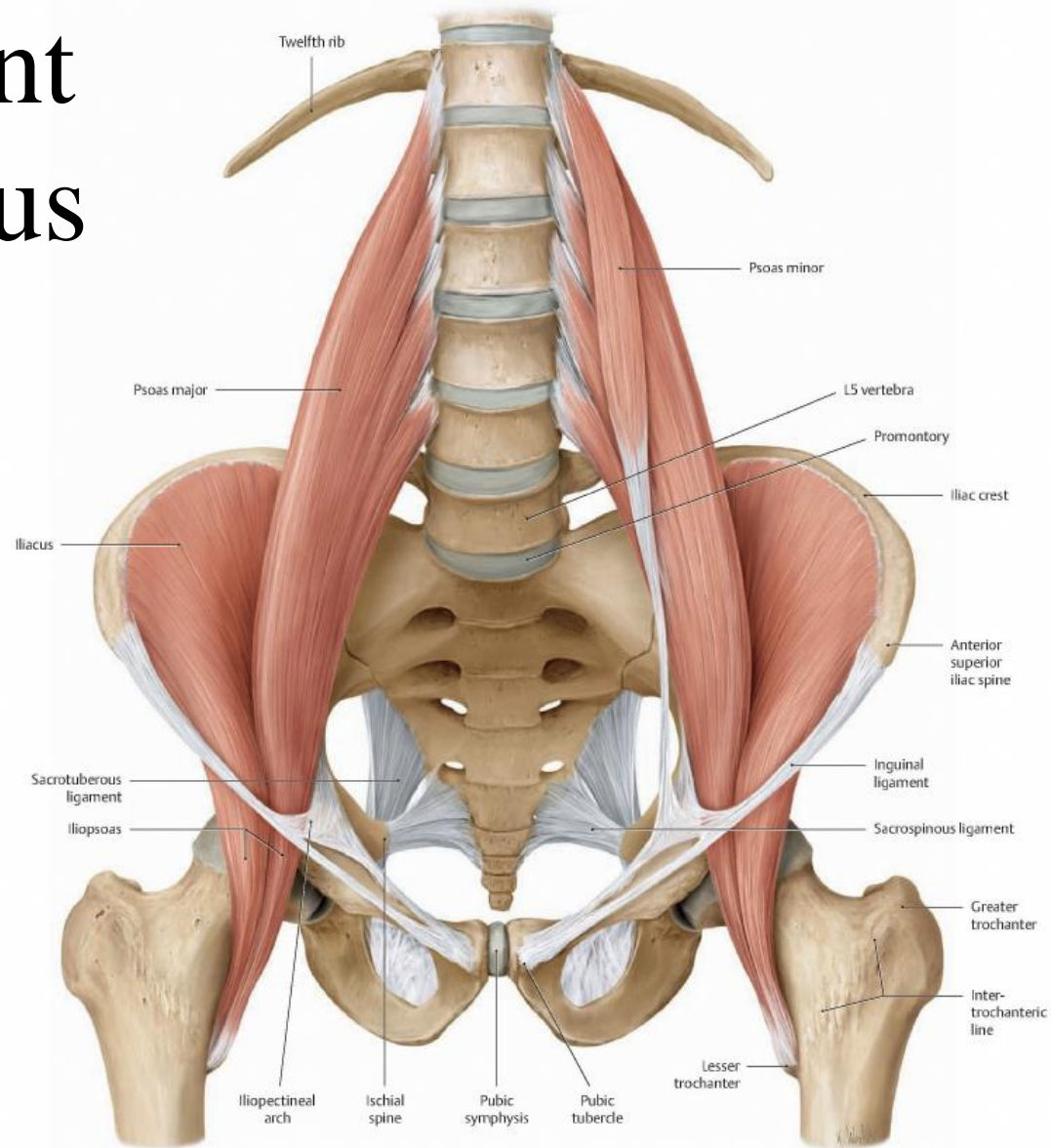
Inguinal ligament subinguinal hiatus

Inner hip muscles:

- psoas major
- iliacus
- (-psoas minor)



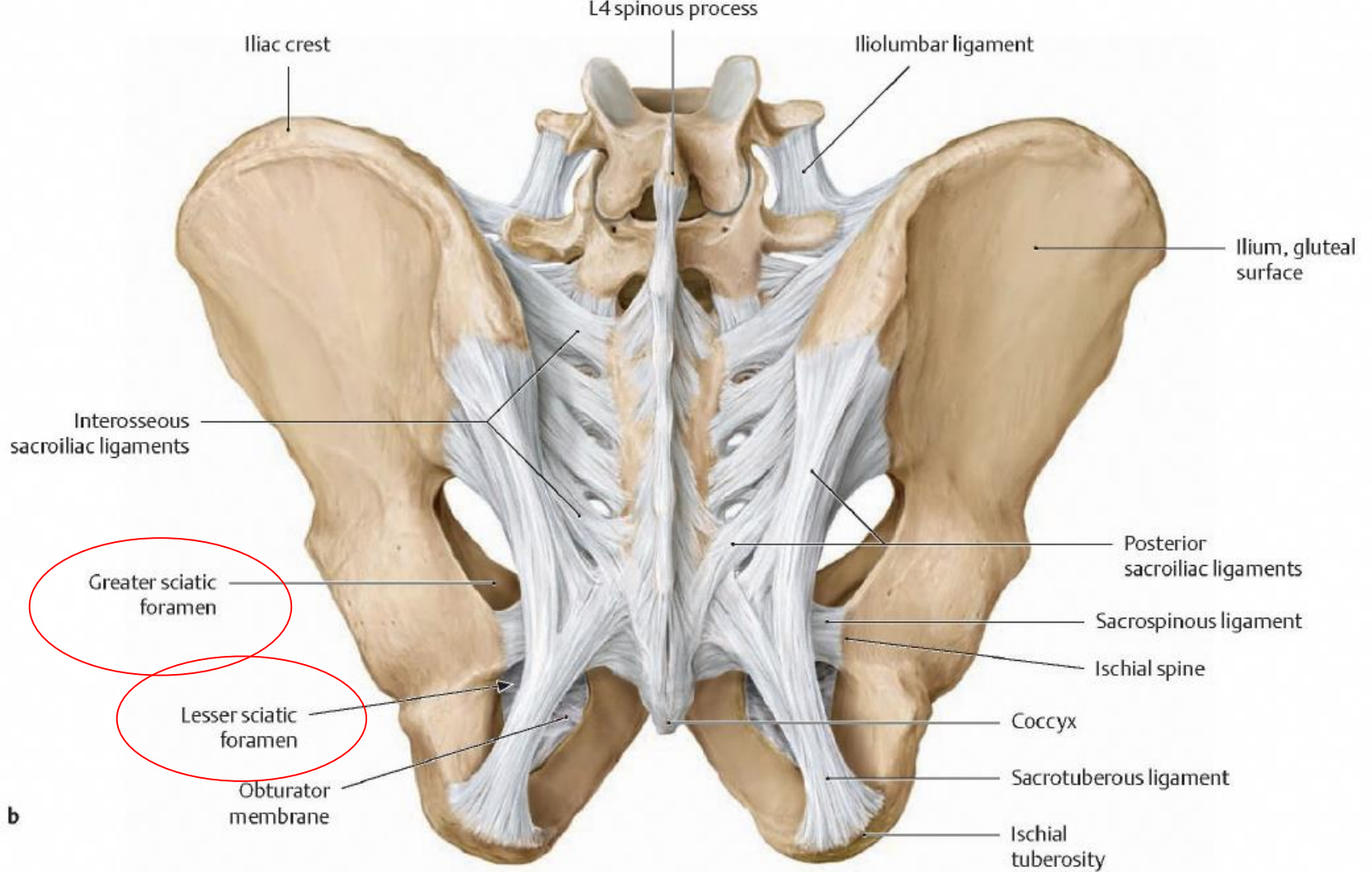
Copyright © 2004, by The McGraw-Hill Companies, Inc.
All rights reserved.



B The inner hip muscles Anterior view.

Illustrator: Karl Wesker

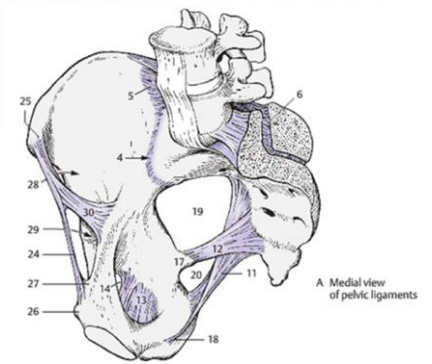
pp. 422-423

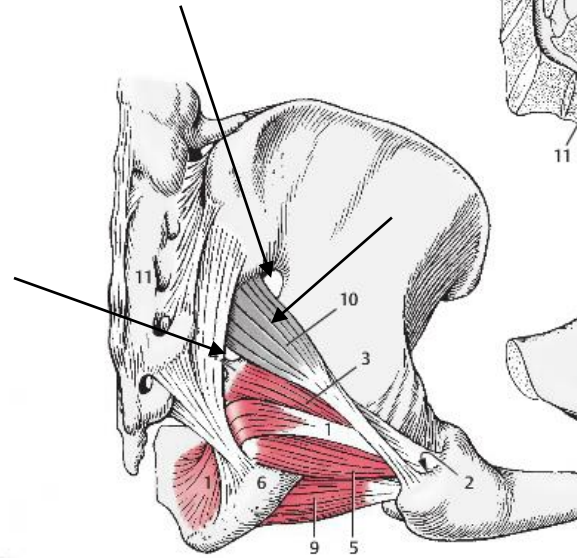
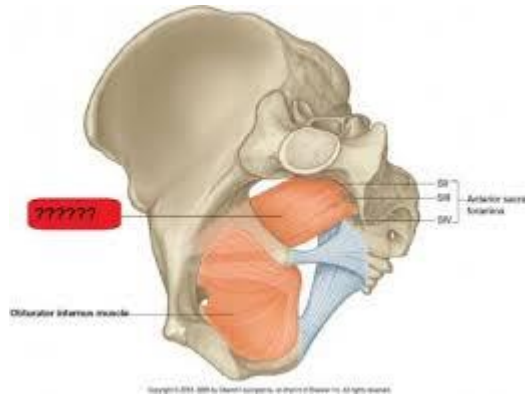
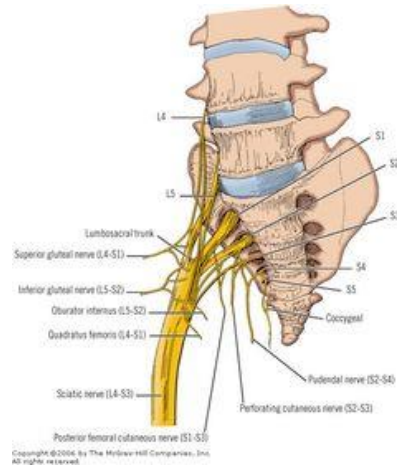
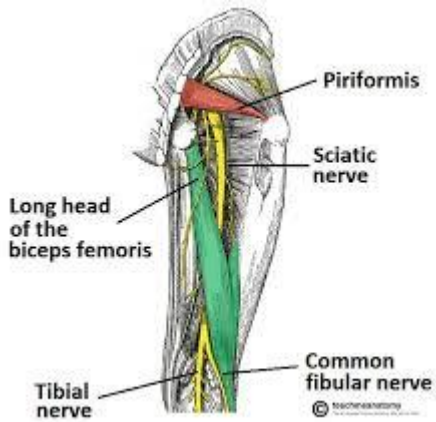


b

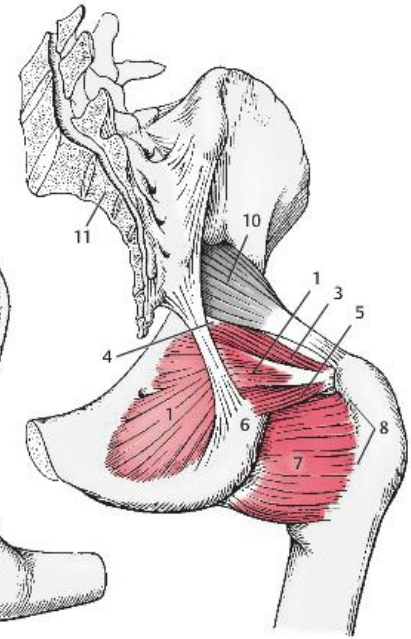
A Ligaments of the male pelvis

b Posterior view.

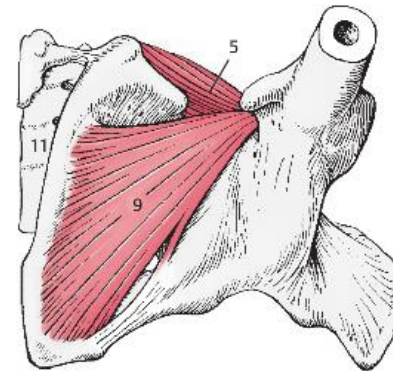




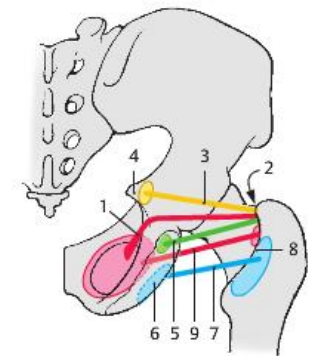
A Dorsal view of ventral muscles of hip with thigh flexed



B Dorsal view of ventral muscles of hip with thigh extended

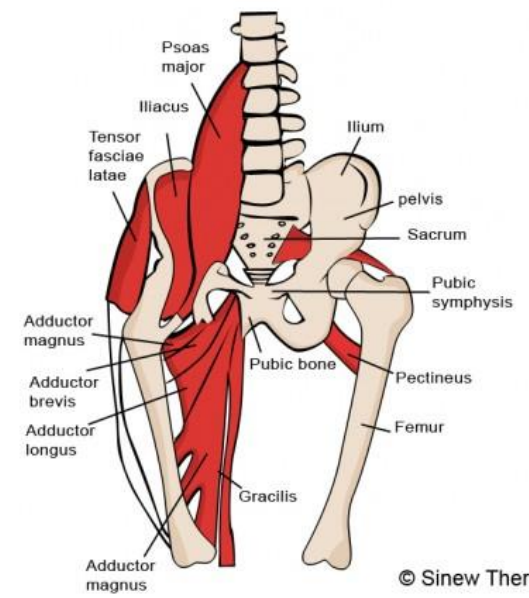
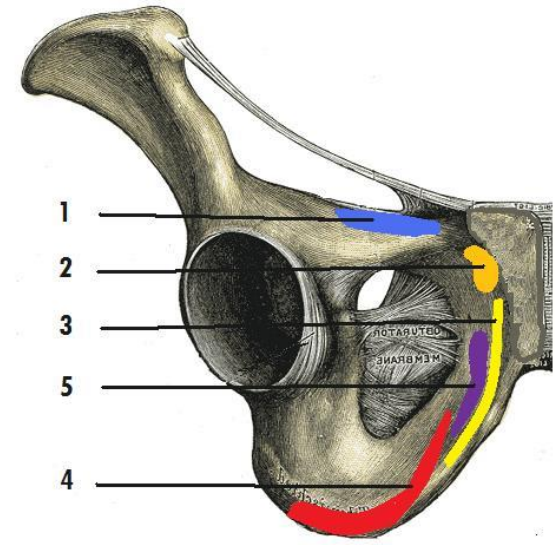
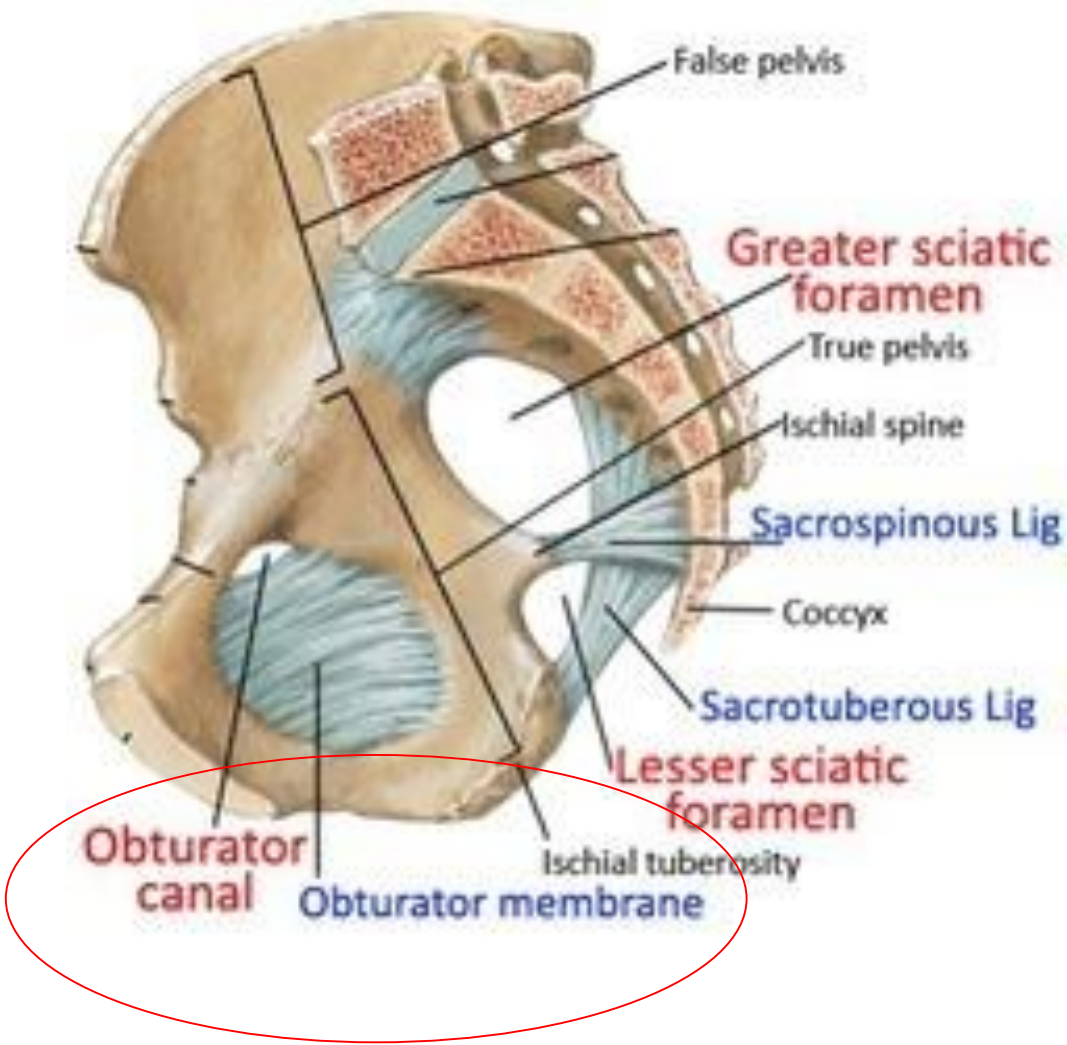


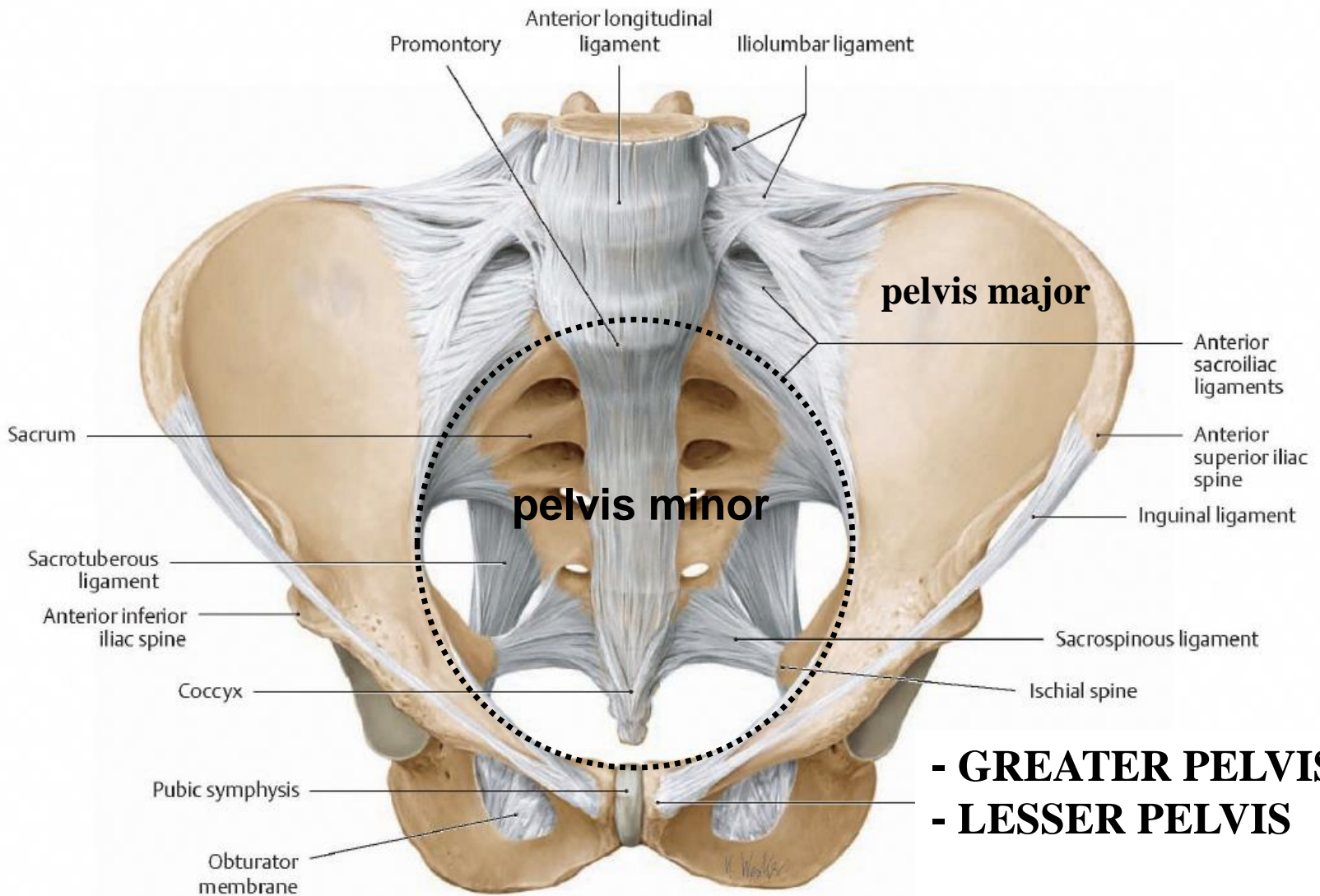
C Distal view of obturator externus muscle



D Diagram of origin, course, and insertion of muscles

Greater sciatic foramen divide by piriformis m. forms suprapiriform and infrapiriform hiatuses



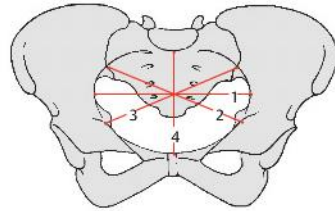


a

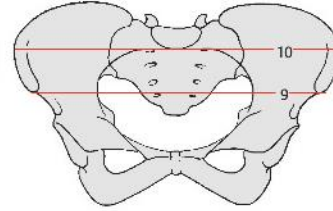
A Ligaments of the male pelvis

a Anterosuperior view.

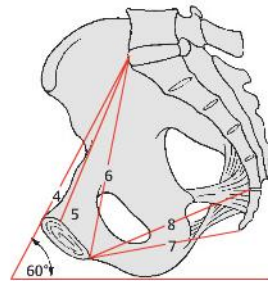
MALE AND FEMALE FEATURES



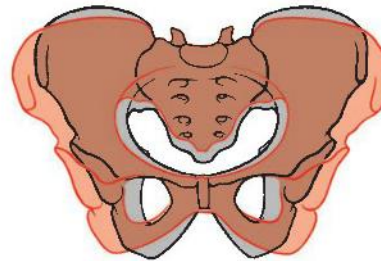
B Pelvic diameters



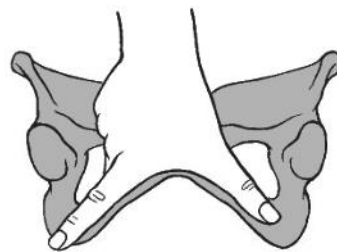
C External pelvic dimensions



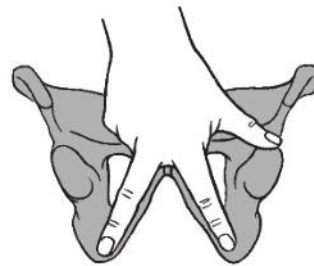
A Pelvic inclination



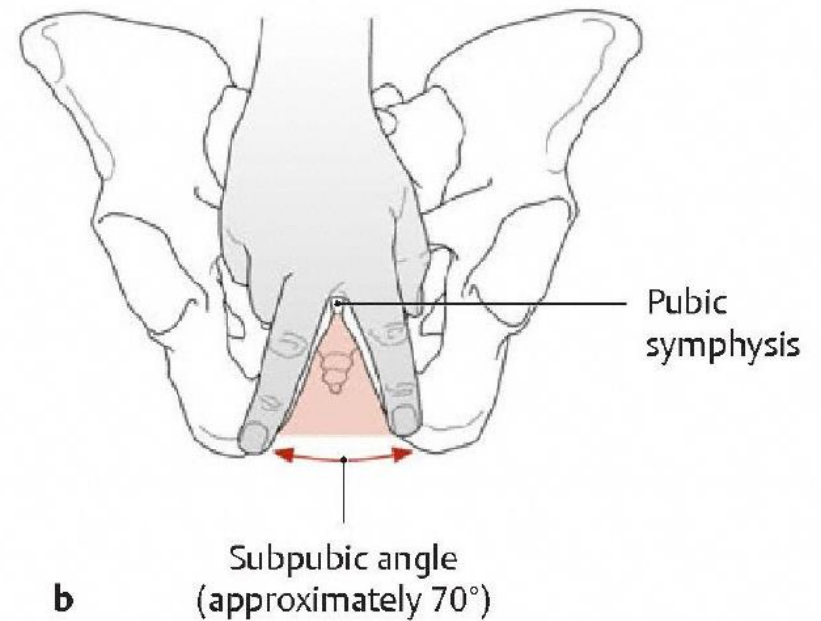
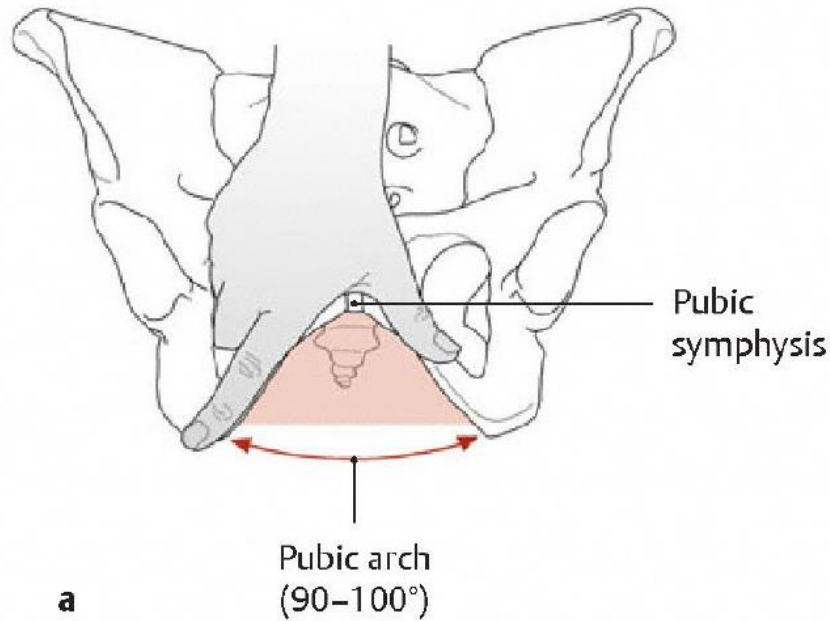
D Comparison of a male pelvis and female pelvis



E Pubic arch



F Subpubic angle

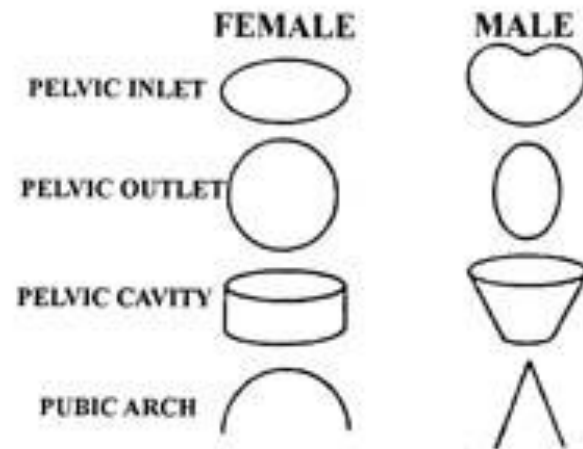


D Lower pubic angle

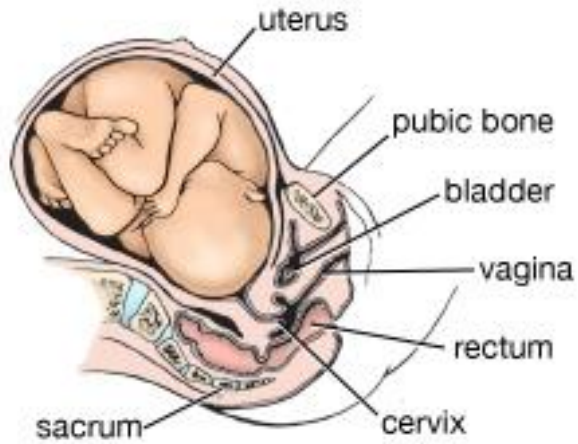
Anterior view.

a Female pelvis: pubic arch.

b Male pelvis: subpubic angle.



Onset of labour



Flexion



Internal rotation of head



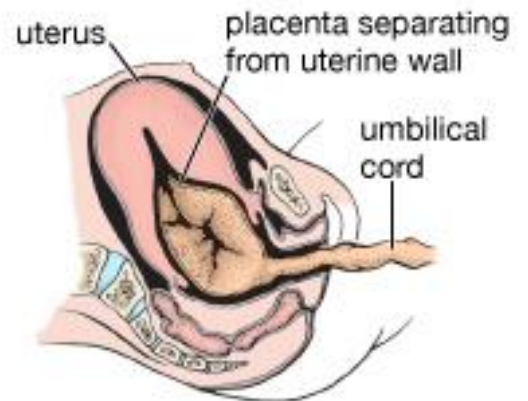
Extension



External rotation of head

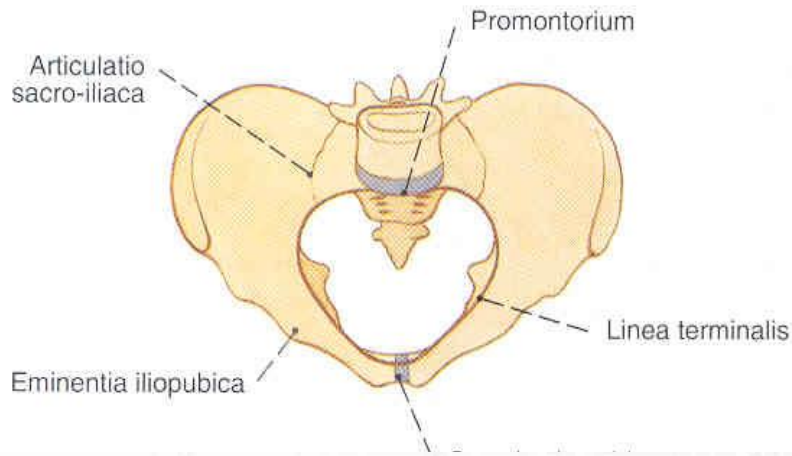


Uterus immediately after birth

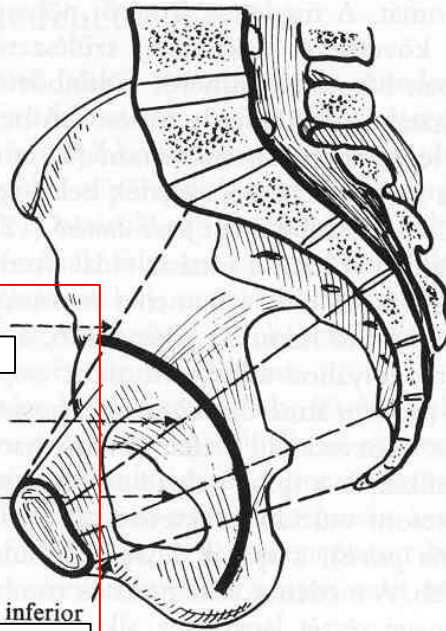
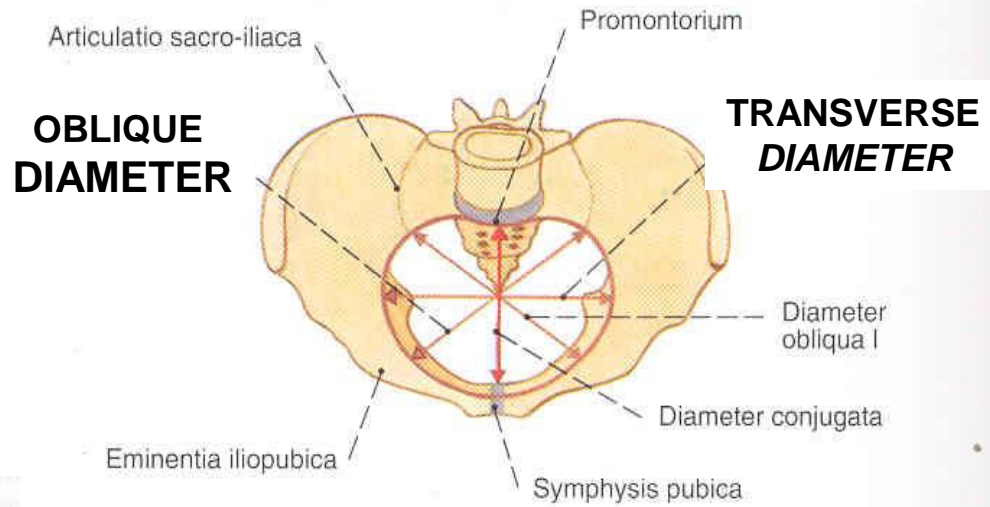


DIAMETERS

MALES



FEMALES



DIAMETERS

FEMALE PELVIS

Birth Canal (Vagina)



Spina iliaca anterior superior

Spina iliaca anterior inferior

ANATOMICAL CONJUGATE

Apertura pelvis superior*

Pelvic inlet

INCLINATIO PELVIS

OBSTETRIC CONJUGATE

Foramen obturatum

DIAGONAL CONJUGATE (DIAMETER)

SAGITTAL DIAMETER of *amplitudo pelvis*

Foramen ischiadicum [sciaticum] majus

Lig. sacrospinale

ANGUSTIA PELVIS (pubococcygeal distance)

Lig. sacrotuberale

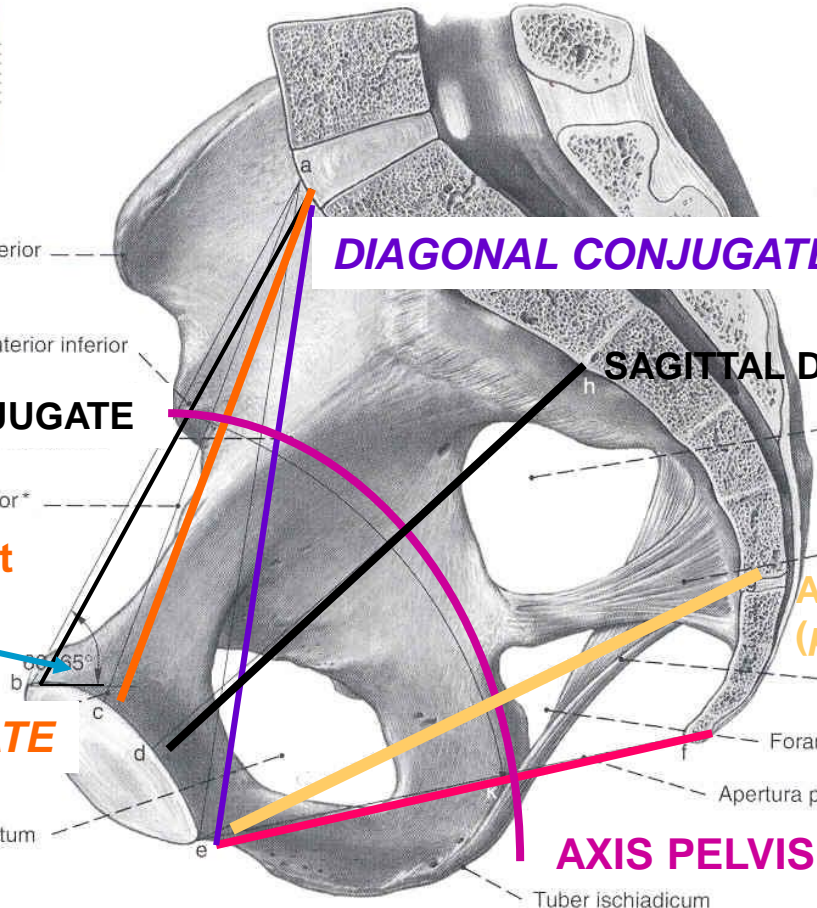
Foramen ischiadicum [sciaticum] minus

Apertura pelvis inferior

Pelvic outlet

AXIS PELVIS

Tuber ischiadicum





1. Head floating, before engagement



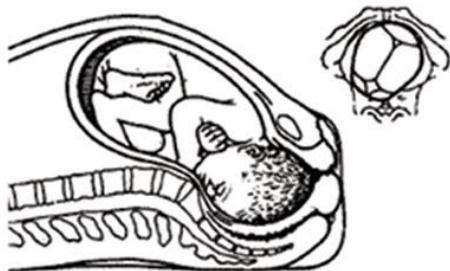
5. Complete extension



2. Engagement; descent, flexion



6. Restitution (external rotation)



3. Further descent, internal rotation



7. Delivery of anterior shoulder



4. Complete rotation, beginning extension



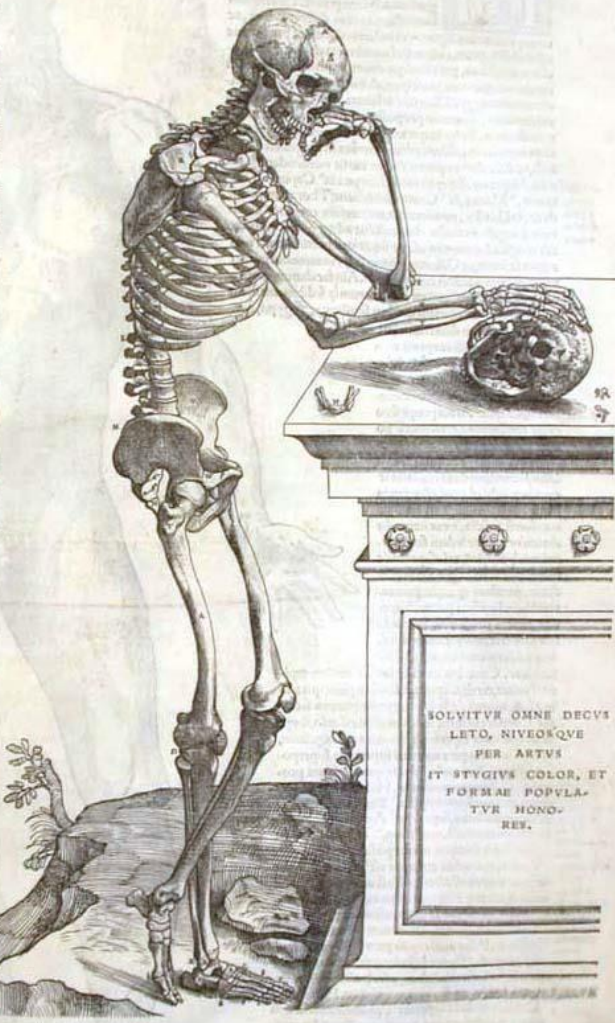
8. Delivery of posterior shoulder

CHARACTERVM HVIVS OMNIUM
 ceterum imaginem ostendens figura Index.

E T N I In figura aut proferuntur hancuq; cetera ostenduntur. Eque non hancuq; ut ad proferuntur hancuq; cetera ostenduntur. Eque non hancuq; ut ad proferuntur hancuq; cetera ostenduntur. Eque non hancuq; ut ad proferuntur hancuq; cetera ostenduntur.

- A. Quatuordecim sunt ossa quae in thorace sunt, et in costis.
- B. Quatuordecim sunt ossa quae in thorace sunt, et in costis.
- C. Quatuordecim sunt ossa quae in thorace sunt, et in costis.
- D. Quatuordecim sunt ossa quae in thorace sunt, et in costis.
- E. Quatuordecim sunt ossa quae in thorace sunt, et in costis.
- F. Quatuordecim sunt ossa quae in thorace sunt, et in costis.
- G. Quatuordecim sunt ossa quae in thorace sunt, et in costis.
- H. Quatuordecim sunt ossa quae in thorace sunt, et in costis.
- I. Quatuordecim sunt ossa quae in thorace sunt, et in costis.
- K. Quatuordecim sunt ossa quae in thorace sunt, et in costis.
- L. Quatuordecim sunt ossa quae in thorace sunt, et in costis.
- M. Quatuordecim sunt ossa quae in thorace sunt, et in costis.
- N. Quatuordecim sunt ossa quae in thorace sunt, et in costis.
- O. Quatuordecim sunt ossa quae in thorace sunt, et in costis.
- P. Quatuordecim sunt ossa quae in thorace sunt, et in costis.
- Q. Quatuordecim sunt ossa quae in thorace sunt, et in costis.
- R. Quatuordecim sunt ossa quae in thorace sunt, et in costis.
- S. Quatuordecim sunt ossa quae in thorace sunt, et in costis.
- T. Quatuordecim sunt ossa quae in thorace sunt, et in costis.
- U. Quatuordecim sunt ossa quae in thorace sunt, et in costis.
- V. Quatuordecim sunt ossa quae in thorace sunt, et in costis.
- W. Quatuordecim sunt ossa quae in thorace sunt, et in costis.
- X. Quatuordecim sunt ossa quae in thorace sunt, et in costis.
- Y. Quatuordecim sunt ossa quae in thorace sunt, et in costis.
- Z. Quatuordecim sunt ossa quae in thorace sunt, et in costis.

I. K. L. M. N. In charactere hancuq; cetera ostenduntur. Eque non hancuq; ut ad proferuntur hancuq; cetera ostenduntur. Eque non hancuq; ut ad proferuntur hancuq; cetera ostenduntur.



SOLVITUR OMNE DECVS
 LETO, NIVEVSQVE
 PER ARTVS
 IT STYGIVS COLOR, ET
 FORMAE POPVLA-
 TVR HONO-
 RES.

A. Ceterum esse ostenduntur hancuq; cetera ostenduntur. Eque non hancuq; ut ad proferuntur hancuq; cetera ostenduntur. Eque non hancuq; ut ad proferuntur hancuq; cetera ostenduntur.

Folio 9v from the *Epitome of Vesalius*, Basel, 1543.