

Frequently Asked Questions

Using the NOMAD Light™

How do I stick it to the wall?

Firstly, make sure the surface is clean, dry and free of debris. With your choice of gel pad attached to the light, either delicate, medium (attached) or strong, press the light onto the surface. The gel pad will hold the light to the wall.

Will it stick to any surface?

We do not recommend sticking the NOMAD Light™ to rough or delicate surfaces such as brick walls or wallpaper as it may fall off. Take care when removing from delicate surfaces.

How do I maintain the gel pad?

Simply wipe the gel pad with a damp cloth to maintain stickiness. Replace the protective cover when storing the light. Replacement gel pads are available to purchase.

Can I change the beam angle?

Yes, the NOMAD package includes 3 different lenses so you can alter the beam width. The beam angles are indicated on the lenses. See overleaf.

Can I change the bulb?

The NOMAD Light™ is built with an integral non-replaceable LED bulb with a life of approximately 20,000 hours.

Can I dim the light output?

Yes, simply hold down the switch on the lamp head and the brightness will adjust.

Battery and charging

How do I charge the light?

The NOMAD Light™ can be charged with the USB cable included, either from the travel case (if charged) or directly from the mains.

How do I charge the travel case?

The travel case can be recharged using the USB charging cable and the USB charger plug. It will take approximately 7 hours to recharge.

How long does it take to charge the NOMAD Light™?

The NOMAD takes 1.5 hours to recharge fully.

Can I use the NOMAD Light™ when it is charging?

Yes. The NOMAD Light™ can be used when it is charging.

How many times can I charge the NOMAD Light™ from the fully charged travel case?

The travel case will charge the NOMAD Light™ around 5 times.

How will I know when the travel case is recharged?

The battery indicator lights will flash until a full charge is reached.

How long does the battery last?

The integrated battery will last up to 2.5 hours from a single charge depending on the brightness setting.

Travelling with the NOMAD Light™

Can I take my NOMAD Light™ and travel case on a flight?

Yes. The rechargeable travel case is classed as a 'powerbank' and as such must be stored in your carry-on baggage. For reference the watt hours of the case is 22.2Wh.

Can I store the NOMAD Light™ in the travel case?

Yes. The travel case is designed to be a travel and storage case. When using the travel case please ensure the light is stored with the head tilted downwards.

Is the travel case waterproof?

No. The travel case is a powerbank and it must not be exposed to liquids.

Customer Service

To purchase a rechargeable travel case or replacement gel pads, to request a Serious brochure or to purchase any light in the Serious family, please call on the numbers below or visit our website.

0800 028 1890 | +44 (0) 1296 390390

www.seriousreaders.com

Battery Safety

- The NOMAD Light™ and rechargeable travel case are sealed units and the batteries should not be removed. Dispose of the entire unit properly.
- Avoid extreme temperatures.
- Use original or certified cables.
- Do not expose to liquids.
- Avoid dropping.
- Do not disassemble.
- Keep out of the reach of children.

Battery Disposal

- The NOMAD Light™ and rechargeable travel case are sealed units and the batteries should not be removed. Rechargeable batteries contain harmful metals, and are classified as hazardous waste. They must never be thrown away with daily rubbish and must be returned to the manufacturer or your local recycling service for disposal. Dispose of the entire unit properly.
- Serious® is WEEE registered and provides a disposal service at Unit 15 – 16 Faraday Road, Aylesbury, HP19 8RY.

Congratulations

We hope you will love your new NOMAD Light™

For years, many Serious Light customers have said how much they would love to carry the quality of their light with them. The NOMAD Light™ allows you to do just that.

Like every light in the Serious family, it is designed to give your eyes a better chance of seeing clearly and comfortably. For over 35 years we have been focused on improving sight by shedding better light.

A great light is not about brightness alone. Bespoke Serious Daylight Wavelength Technology™ closely matches daylight, so that detail like small print and colours can be seen in higher definition, just as they might appear in natural light. A Serious Light works to improve contrast and to reduce eyestrain and its symptoms such as headaches, sore eyes and tiredness.

Your NOMAD Light™ will travel with you. This means you can enjoy doing what you love doing in comfort for longer wherever you find yourself. Simply press the light onto a smooth surface and its gel pad will fix the light to the wall. Hold down the switch on the lamp head and the brightness will adjust to suit your needs.

We believe that shedding better light makes a life-enriching difference to our lives. If this is worth doing, it is worth doing well. I do hope that you love your NOMAD Light™.

Alex Pratt OBE
Founder

The Serious Story



Early Days

In 1982 our Founder Alex Pratt, while still at University in Scotland, discovered that his task light helped him study and concentrate for longer. He went on to design a specialist sewing machine light for Singer.

Hard Task Master
Projecting unfailing visual clarity, Serious became the light engine of choice for specialist applications where light mattered most such as surgery, forensic science and even the odd tank and space programme.



Mum's the Word

Events at Serious took on an unexpected personal turn when Alex took on the hardest brief of all - designing the ultimate personal reading light for his mum who suffered with Macular Degeneration.



Licensed to Shed...

Amongst a number of cameo roles in blockbuster films from Die Hard to the Bourne Identity, Serious Lights popped up in Q's Den and inside M15 in Die Another Day and Casino Royale.



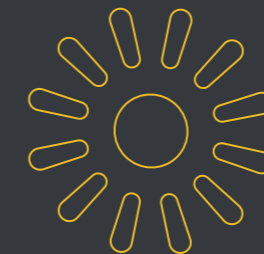
Daylight Wavelength Technology™

Our eyes naturally yearn for comforting daylight. The result of 35 years research is a bespoke light engine which replicates the daylight spectrum. No other light offers Daylight Wavelength Technology™.



Serious Today

There are now over 500,000 Serious Lights owned by devoted fans in more than 60 countries around the globe. Individual customers include many professionals. Wherever a great mind needs a great light, you will find Serious.



0800 028 1890 | +44 (0) 1296 390390

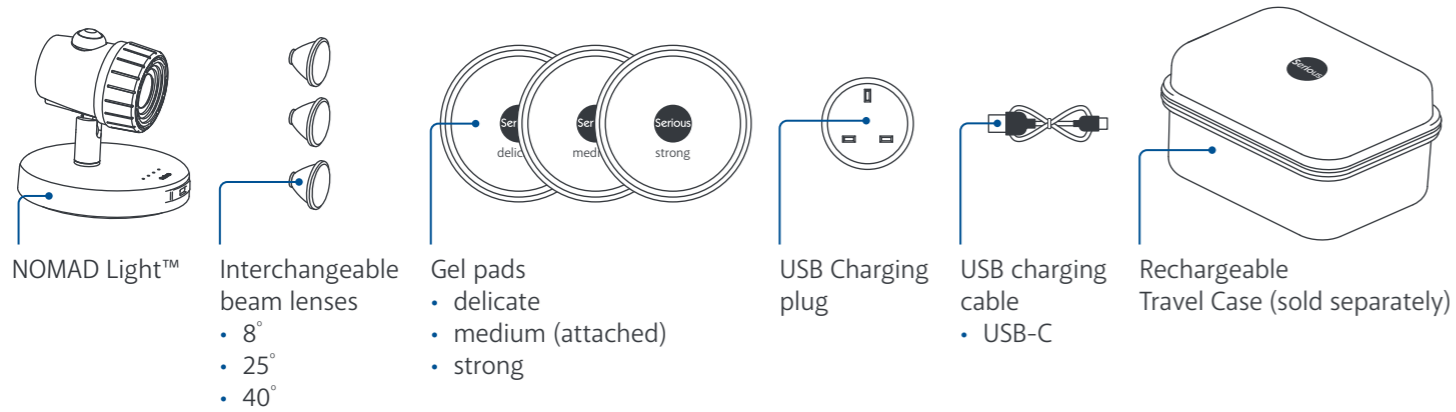
www.seriousreaders.com

Serious Readers, The Chapel, Bierton, Bucks, HP22 5DW. UK

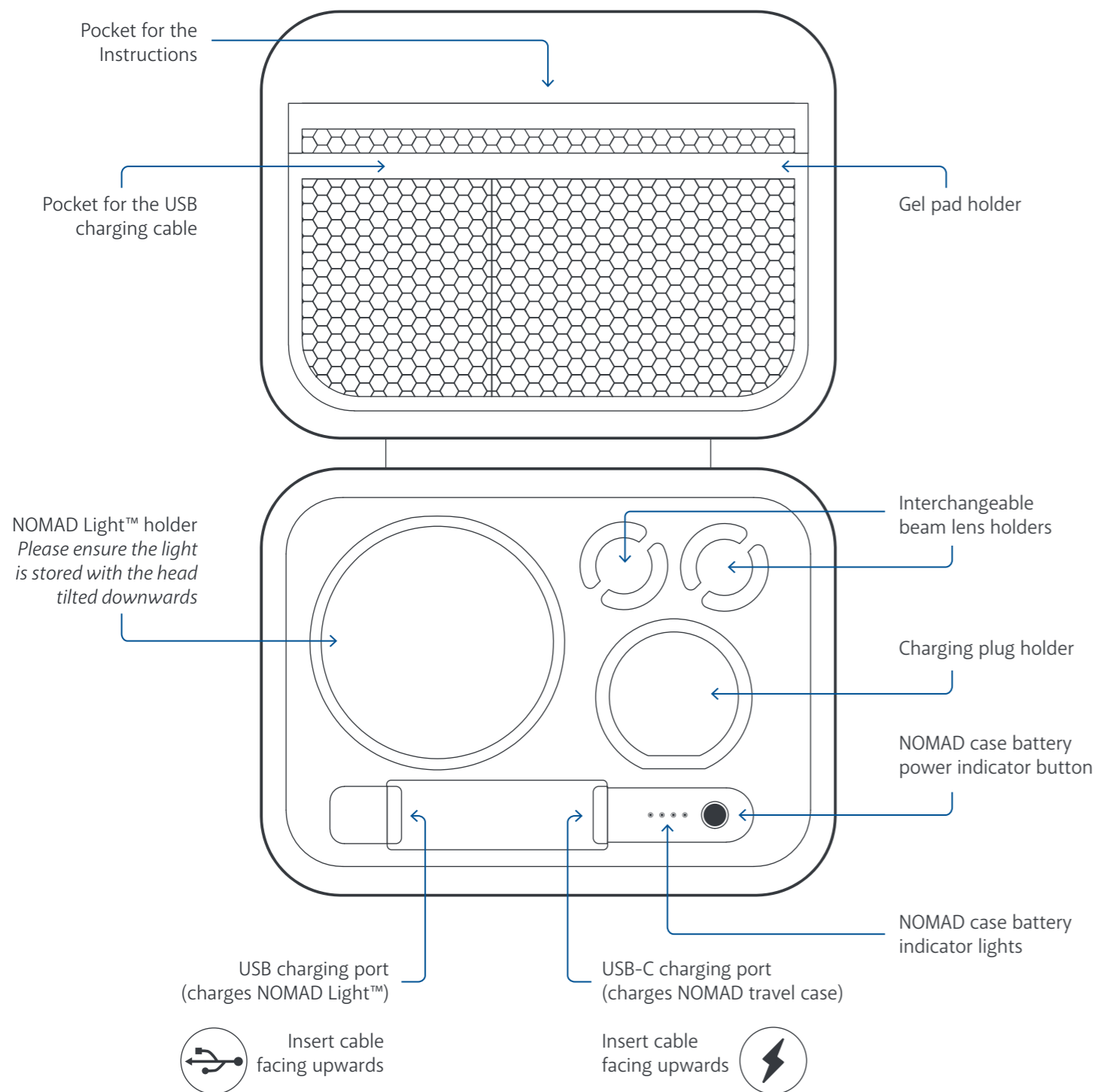
SR103 v2



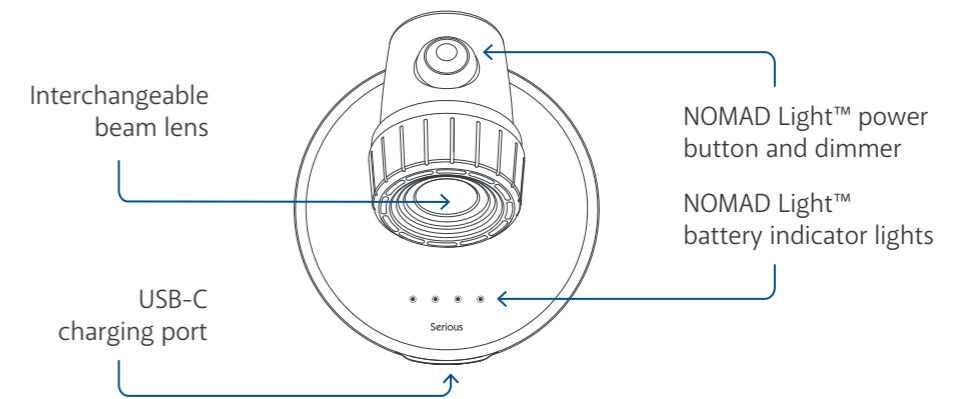
NOMAD - What's Available



Rechargeable Travel Case (sold separately)

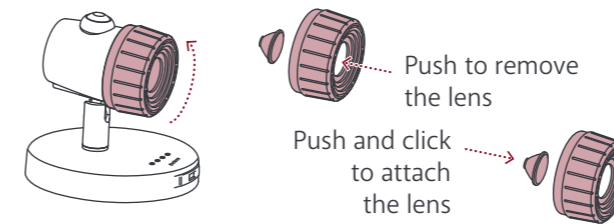


NOMAD Light™



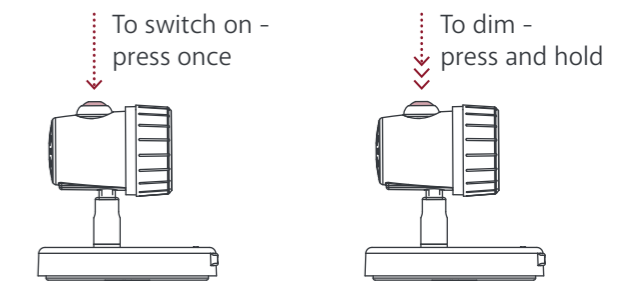
Changing the lenses

To change the lens, turn the lamp head lens holder anti-clockwise and remove it from the body of the light. Push the lens out from the front of the lens holder. Click the new lens into place and screw it back onto the body. Store the removed lens securely back in the box.



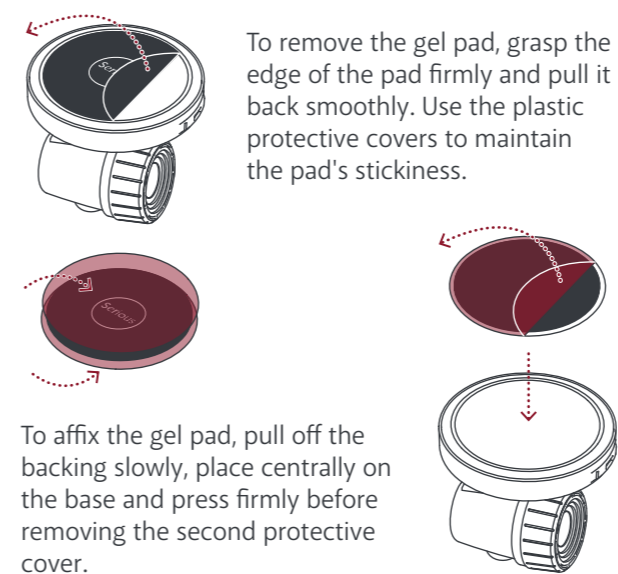
Using the dimmer function

To operate the dimmer, hold down the switch and release when the desired light output is reached.



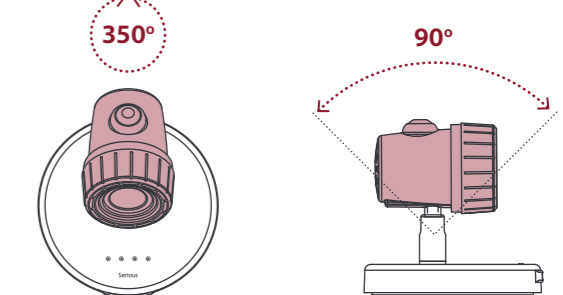
Changing the gel pads

Take your NOMAD Light™ from place to place and affix it to any smooth surface.



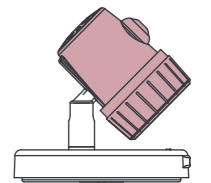
Directing the light beam

The swivel joint allows you to position the lamp head and direct the beam just where you need it.



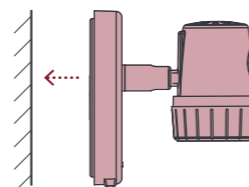
Storing the NOMAD Light™

When using the travel case please ensure the light is stored with the head tilted downwards.



Affixing and removing the NOMAD Light™

To affix the light, push it firmly onto a smooth clean surface.



To remove the light, prise it gently from the edge and peel away from the surface.

