

FIJI METEOROLOGICAL SERVICE

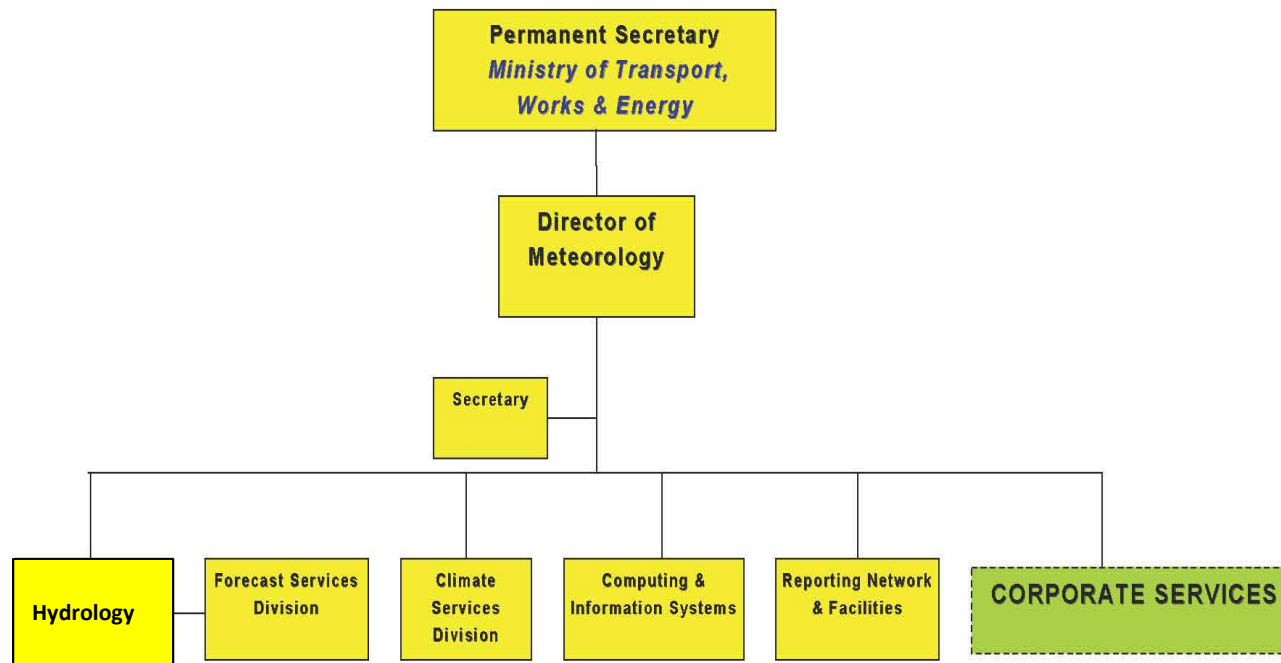
Regional Specialized Meteorological Center



Fiji Islands



Fiji Meteorological Service Organization Structure

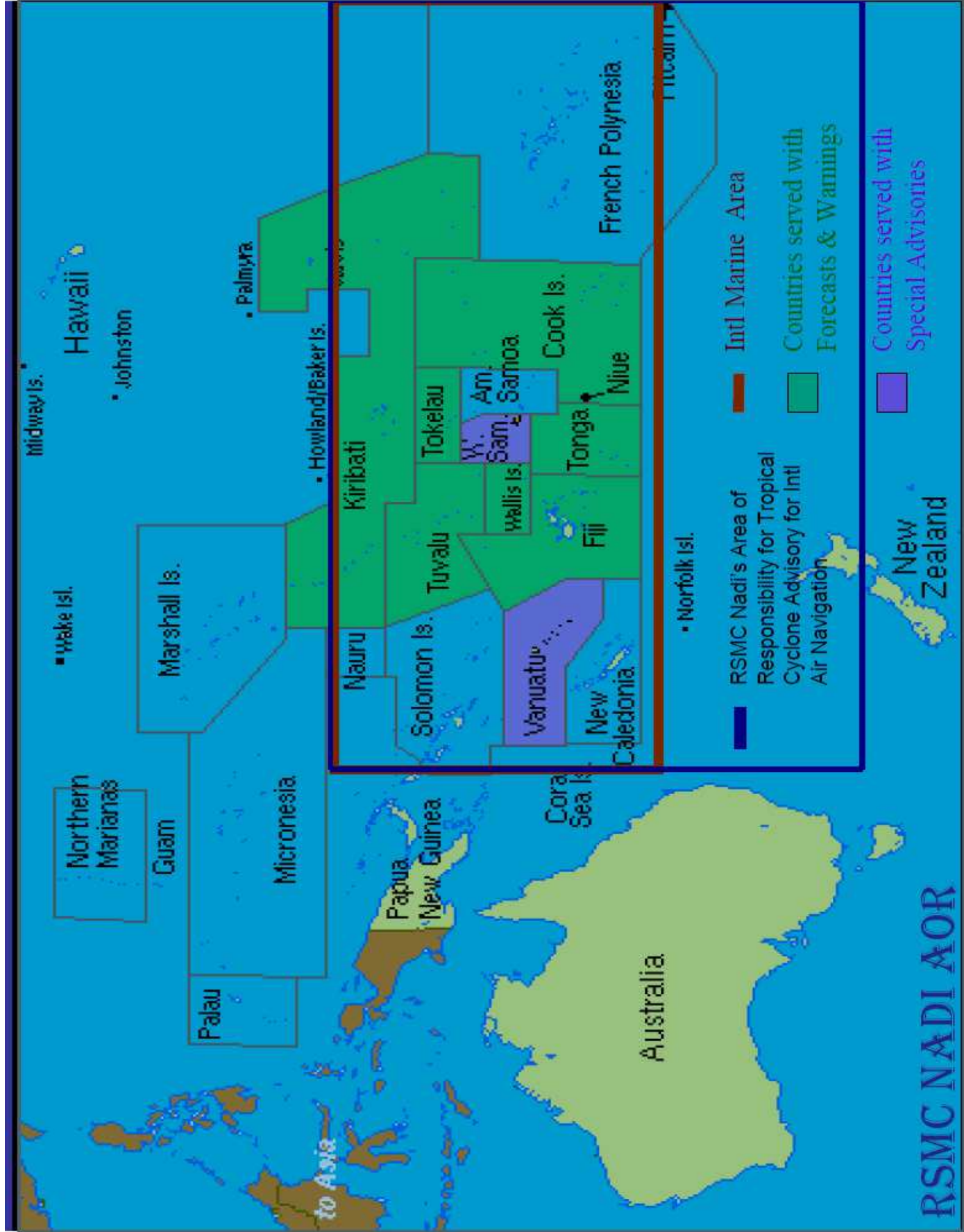


Roles and Responsibilities

- The Fiji Meteorological Service is responsible for providing weather and climate service to Fiji that includes early warning of weather and climatic phenomena.
- It also monitors Fiji's climate and provides information and advice on weather and climate from short to medium and medium to long term.

Roles and Responsibilities

- Acts as RSMC for Tropical Cyclones in SW Pacific
- Primary Area of Responsibility:
 - ✓ Equator to 25 South
 - ✓ 160 East-120W
- Also Tropical Cyclone Advisory Centre
- (TCAC) for Aviation under ICAO for area:
 - ✓ Equator to 40 South
 - ✓ 160E TO 120W



SOUTH PACIFIC TC ADVISORY SYSTEM

STAGES OF DEVELOPMENT

1. TROPICAL DISTURBANCE
2. TROPICAL DEPRESSION
3. TROPICAL CYCLONE with
 - A) **GALE** intensity, - average winds 34-47 knots.
 - B) **STORM** intensity, - average winds 48-63 knots
 - C) **HURRICANE** intensity, - average winds over 63 knots. (Usually referred to as “HURRICANE”).

Note: Winds averaged over 10 minutes

SOUTH PACIFIC TC ADVISORY SYSTEM

BULLETINS

- **SPECIAL WEATHER BULLETIN**
 - *contains public ALERTS & WARNINGS.*
- **SPECIAL ADVISORY BULLETIN**
 - *for Samoa & Vanuatu*
- **TROPICAL DISTURBANCE ADVISORY**
 - *Advisory on TCs & TDs*
- **TROPICAL DISTURBANCE SUMMARY**
 - *Summary of significant disturbances (including TCs) in region*

SOUTH PACIFIC TC ADVISORY SYSTEM

PHASES

- **Early Information Phase (beyond 48 hrs)**
 - *provide information on TC development or movement beyond 48 hrs threat period.*
- **ALERT Phase (24-48 hrs lead time)**
 - *Alert people of possible TC threat within next 24-48 hour period.*
- **WARNING Phase (within 24 hrs)**
 - *Warning for people to take precautions on impending threat within 24 hours.*

WARNING DISSEMINATION

- communications

International

- WMO Global Telecommunication System (GTS)
- ICAO Aeronautical (Fixed) Telecommunication Network (AFTN)
- Emergency Managers Weather Information Network (EMWIN)
- Facsimile/Email/Internet
- **RADIO NETWORK (RANET)**
- **ISCS/WAFS**


WARNING DISSEMINATION

National

- Radio (FM/AM) main means
- TV coverage increasing but not full.
- EMWIN – for Disaster Management
- RANET – in some countries e.g. Niue, Tuvalu, Vanuatu,
- News Papers
- Social Media

Web Site


www.met.gov.fj Search



Fiji Meteorological Service

RSMC Nadi-Tropical Cyclone Centre

*Official Source of reliable "first-level" information on tropical cyclones occurring in the South-West Pacific Ocean. All products on this site are on Fiji Standard Time = (UTC + 12HRS)
Fiji Daylight Saving Time(DST) = (UTC + 13HRS)


12:54:22 pm

ISO 9001:2008 certified provider of Aviation Meteorological Services

[Home](#) | [About Us](#) | [Services](#) | [Careers](#) | [Awareness & Education](#) | [Feedback](#)

To receive our weather bulletins on your email, please email the bulletins you are interested in to fmscustomer@met.gov.fj - Please stay safe!

Current Warning

No Current Warnings

Fiji Weather Forecast

- [Public](#)
- [Marine](#)
- [Town Centers 3-days Forecast](#)
- [7 Day Outlook](#)
- [Rainfall Map](#)
- [Observation Data](#)

Regional Weather Bulletins

Niue	Tokelau
Tonga	Tuvalu
Kiribati	Cook Is
Nauru	

South West Pacific Marine
ZLM Broadcasts Time & Frequencies

Tropical Cyclone Services

2016/17 Tropical Cyclone Outlook

Aeronautical Summaries

Aeronautical Summaries

Aviation Customer SURVEY 2017

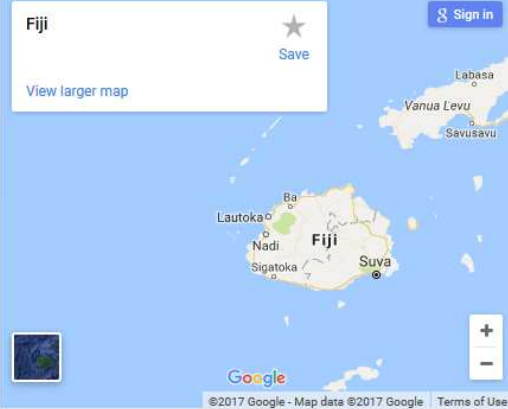
Survey Form

Other Links

Weather
Climate
Tropical Cyclone
Aviation

Fiji Islands Map

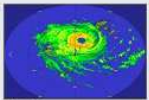
Click here to view full map image



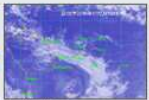
©2017 Google - Map data ©2017 Google | [Terms of Use](#)

Current Conditions


Town	Forecast	Min.	Max.
Ba	Fine. Cool at night.	17	30
Labasa	Fine. Cool at night.	18	30
Lautoka	Fine. Cool at night.	18	30
Nabouwalu	Fine apart from brief showers. Cool at night.	21	27
Nadi	Fine. Cool at night.	18	30
Nausori	Fine apart from brief showers. Cool at night.	17	28
Navua	Fine apart from brief showers. Cool at night.	21	29
Rakiraki	Fine	21	29
Rotuma	Occasional showers and few thunderstorms.	21	30
Savusavu	Fine apart from brief showers. Cool at night.	22	27
Sigatoka	Fine. Cool at night.	21	27
Suva	Fine apart from brief showers. Cool at night.	21	28
Taveuni	Fine apart from brief showers. Cool at night.	21	29
Tavua	Fine. Cool at night.	21	29




Radar



Satellite



Maps



* External Link to JAXA Realtime Rainfall Watch that shows rainfall estimated from satellite-data .

Waiting for www.met.gov.fj...



Fiji Meteorological Service RSMC Nadi-Tropical Cyclone Centre

"Official Source of reliable "first-level" information on tropical cyclones occurring in the South-West Pacific Ocean. All products on this site are on Fiji Standard Time = (UTC + 12HRS) Fiji Daylight Saving Time(DST) = (UTC + 13HRS)

ISO 9001:2008 certified provider of Aviation Meteorological Services



12:56:43 pm

SEARCH

Home

About Us

Services

Careers

Awareness & Education

Feedback

Current Warning

No Current Warnings

Fiji Weather Forecast

- Public
- Marine
- Town Centers 3-days Forecast
- 7 Day Outlook
- Rainfall Map
- Observation Data

Regional Weather Bulletins

- Niue
- Tonga
- Kiribati
- Nauru
- Tokelau
- Tuvalu
- Cook Is

South West Pacific Marine
ZLM Broadcasts Time & Frequencies

Tropical Cyclone Services

- 2016/17 Tropical Cyclone Outlook

Aeronautical Summaries



Climate Data and Products

- Climate Outlook
- Climate Summary
- Sugar Outlook
- Monasavu Outlook
- ENSO Update
- Annual Climate Summary
- South Pacific Sea Level and Climate Monitoring Project AND/OR Tide-Calenders

MONASAVU UPDATE

- June 2017
- May 2017
- April 2017
- March 2017

ENSO Update

- January 2017
- March 2017
- November 2016
- September 2016

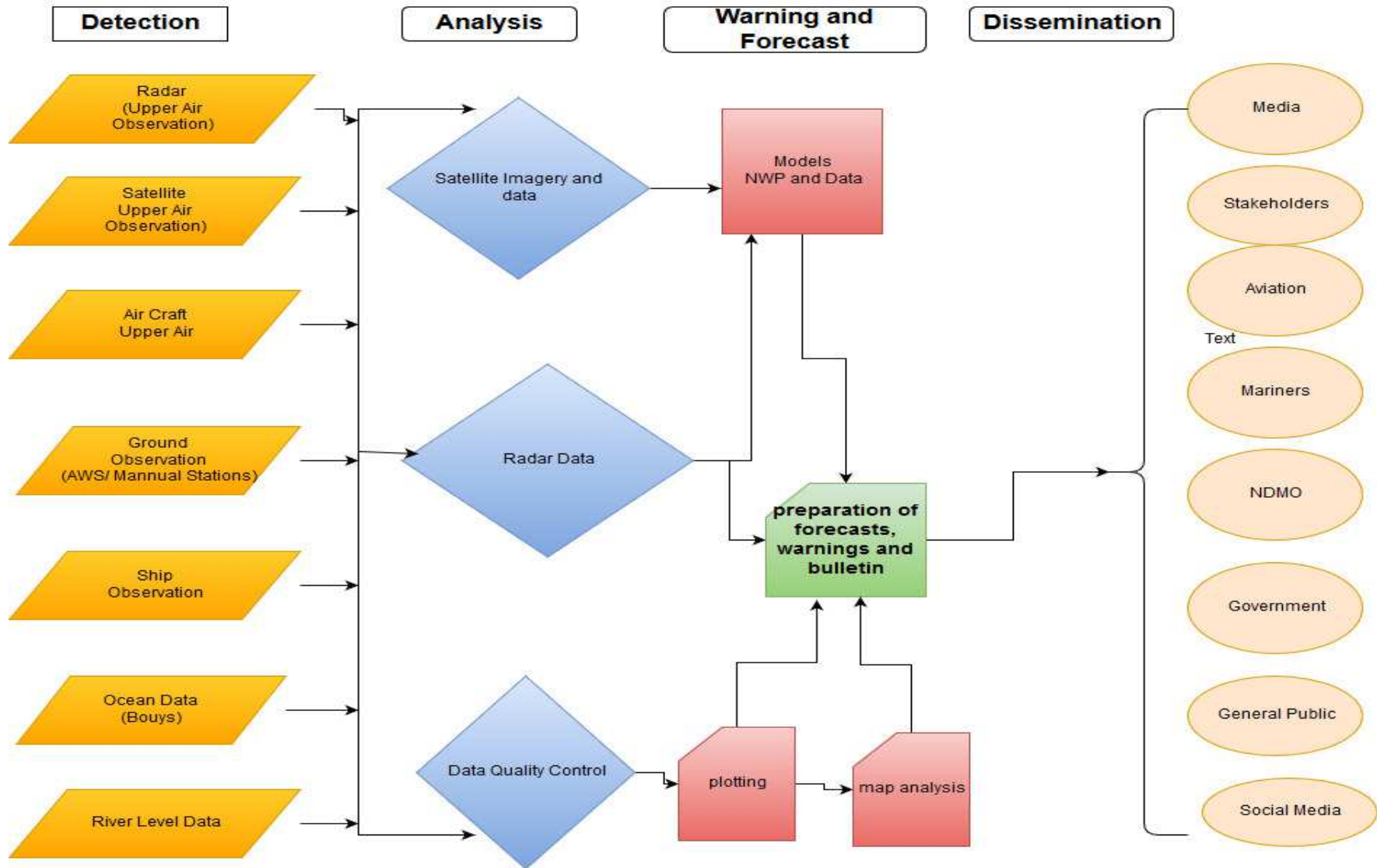
FJI CLIMATE Outlook

- May 2017
- April 2017
- March 2017
- February 2017

FJI CLIMATE Summary

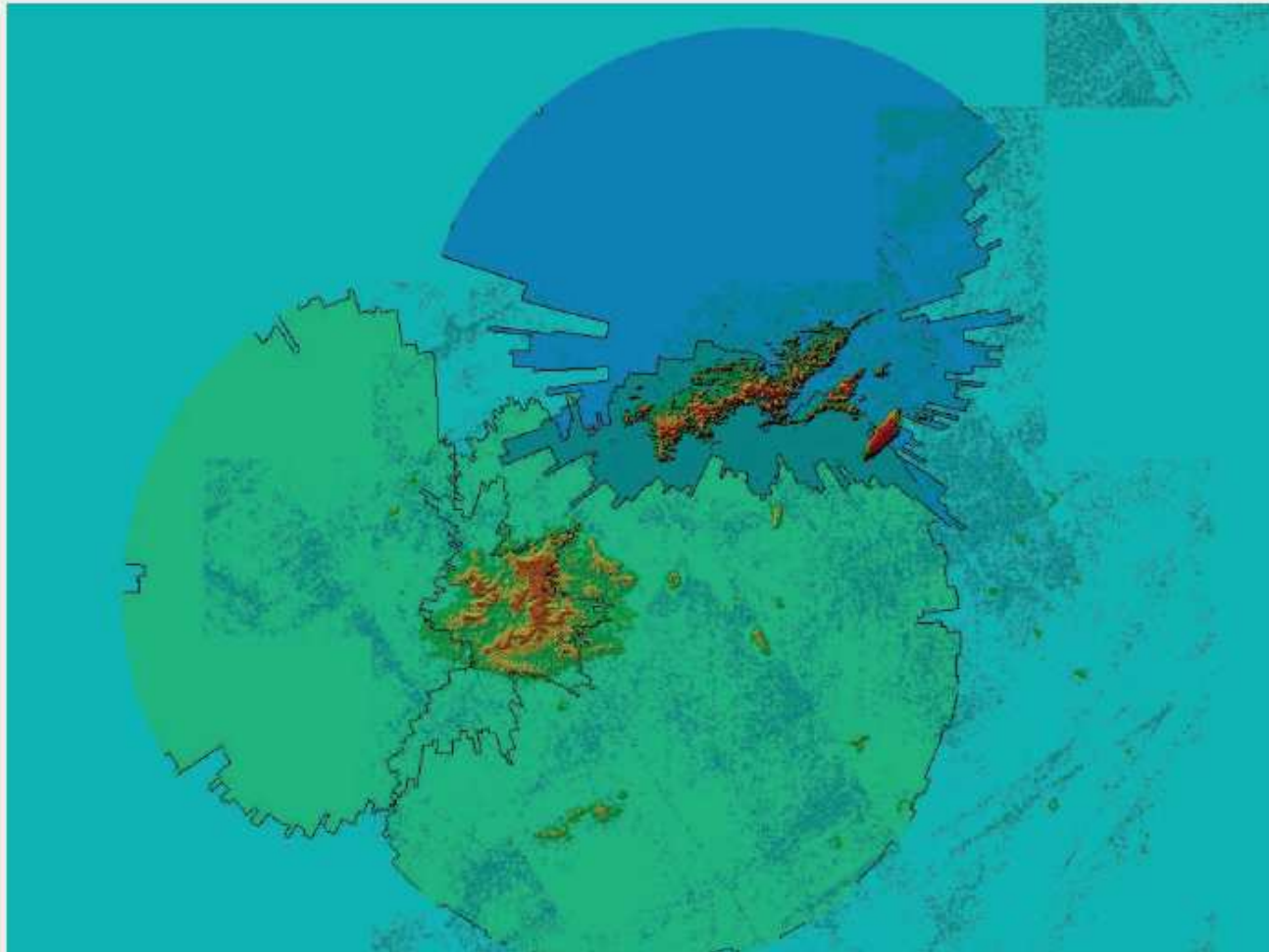
- May 2017
- April 2017
- March 2017
- February 2017

Information Flow at FMS

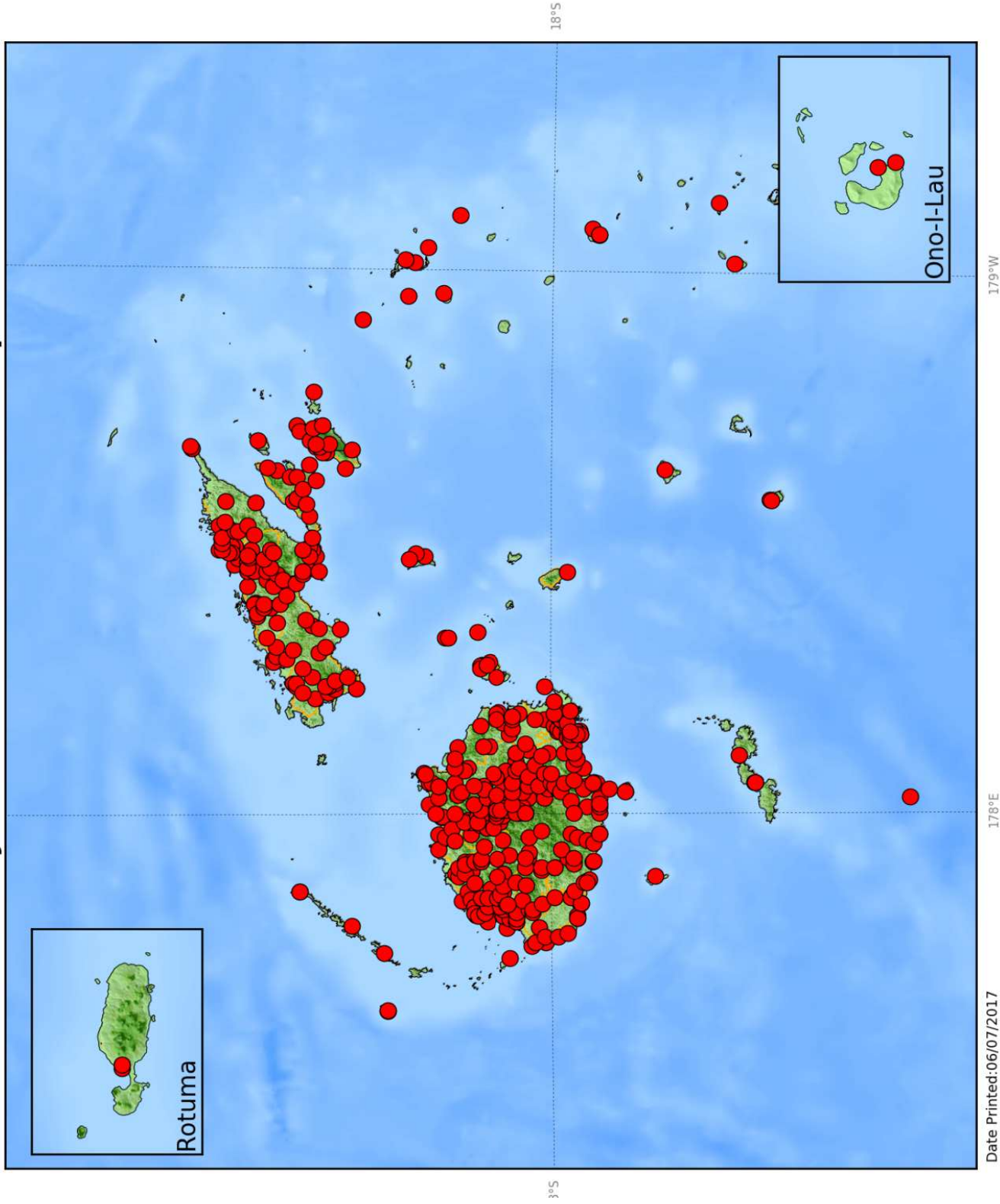


Infrastructure

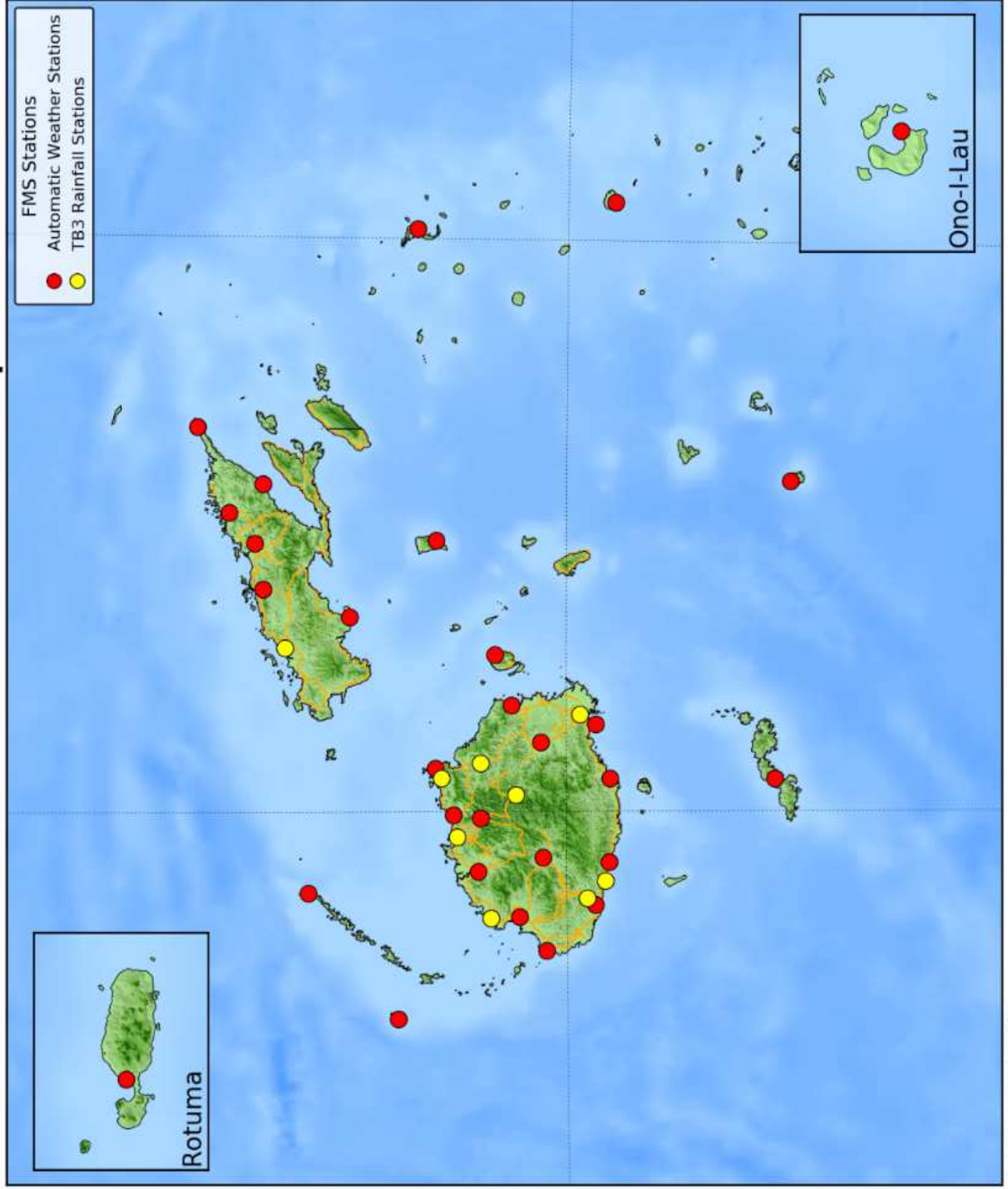
FIJI'S WEATHER SURVEILLANCE RADAR COVERAGE



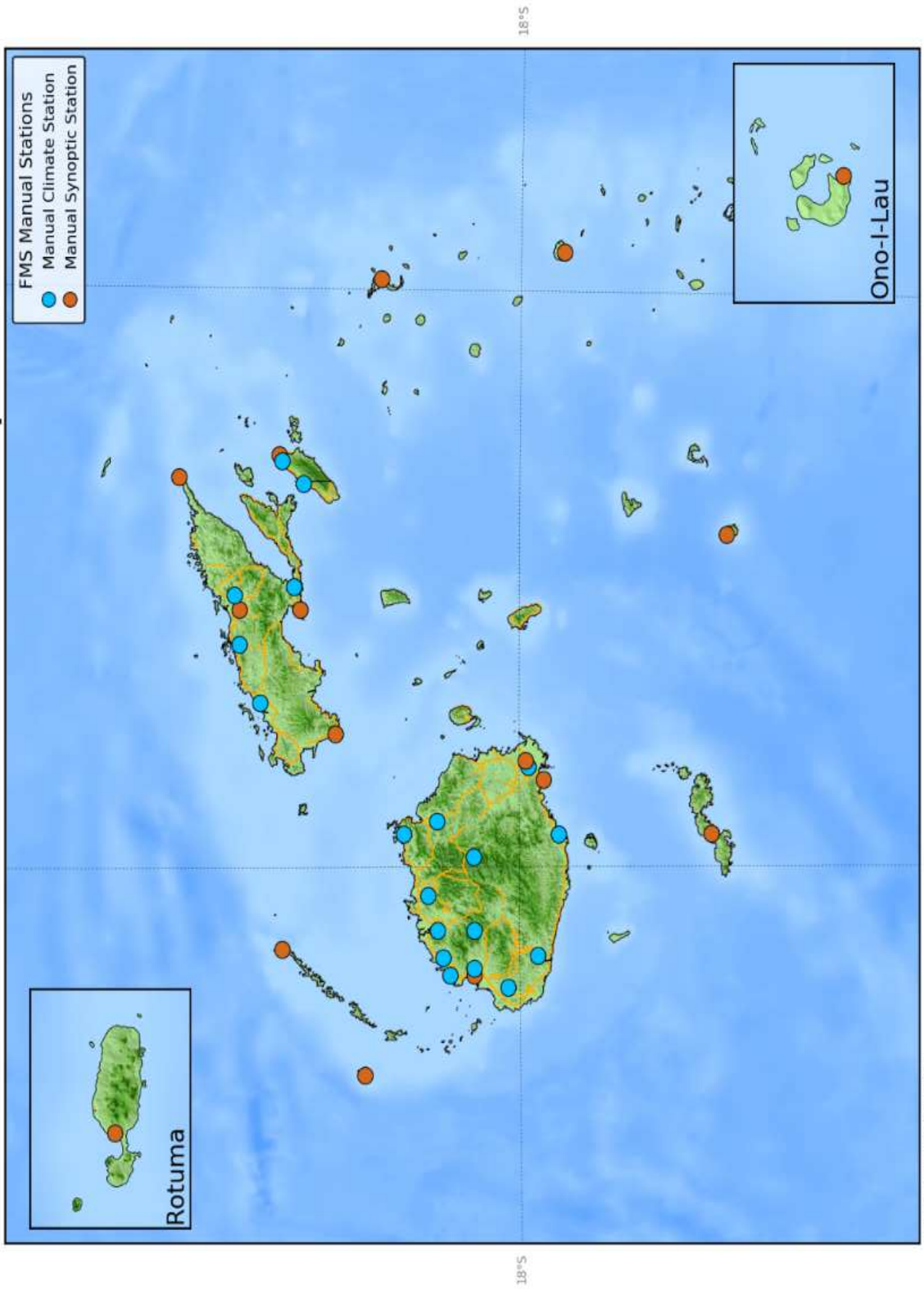
Fiji Climate Station Location Map



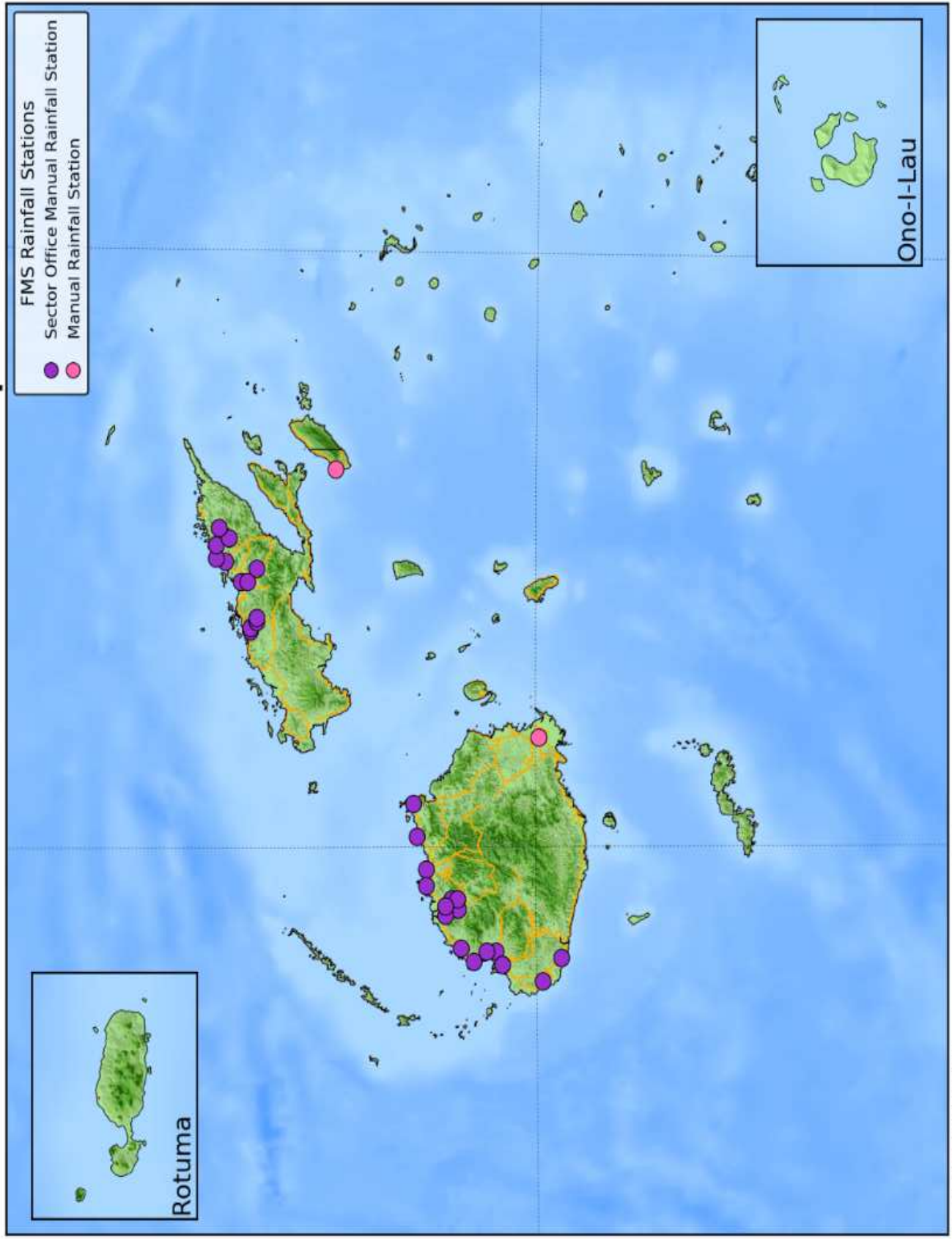
FMS Stations Location Map



FMS Stations Location Map



FMS Stations Location Map



Facilities

- Tide Gauges for Tsunami Warning, Storm Surge Warning, Coastal Flood Warning, Sea Temperature Forecast
- Automatic Weather Station for Early Warning in Strong Winds, Heavy Precipitation
- Wind Profiler for wind shear warning
- Lightning detector for early warning on lightning strike
- VTSAT for communication in early warning and disaster

END OF PRESENTATION

SUSAN

RON

THANK YOU FOR YOUR ATTENTION

KATRINA

Townsville

Caipua

Port Moresby

Honiara

Santo

Port Mils

SUVISE

KORU

NOUMEA

Nadi Suva

Putana

