

Ruthless Springboks crush England to win the World Cup

Updated / Saturday, 2 Nov 2019 11:30



Siya Kolisi of South Africa lifts the Webb Ellis Cup

<https://www.rte.ie/sport/rugby-world-cup-2019/2019/1102/1088211-springboks-crush-england-to-win-the-world-cup/>

TODAY



England

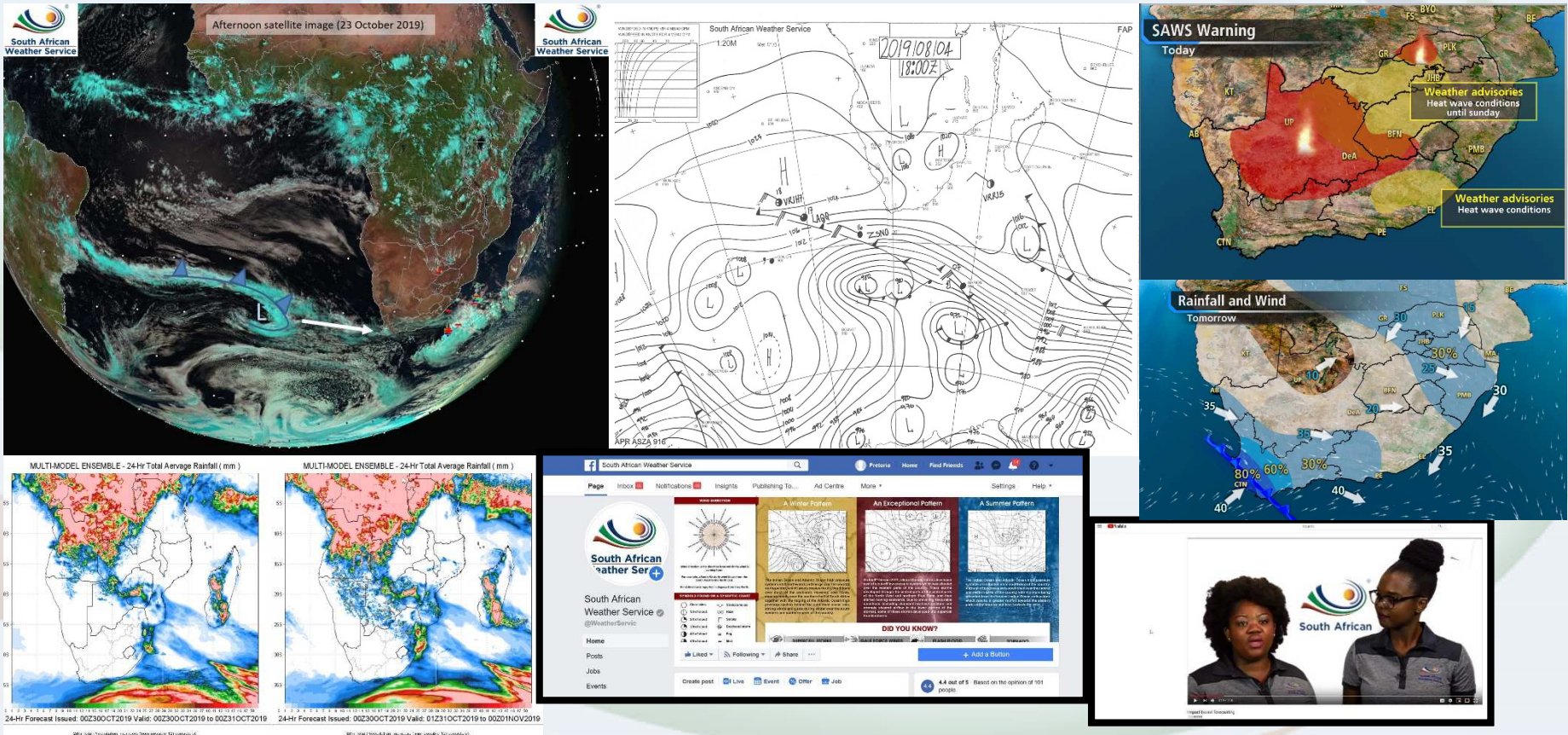
12 - 32

South
Africa



Nissan Stadium

South African Weather Service





Wayne Venter



MANDATE

- Use observations (satellite, radar, synoptic stations, upper air soundings etc.)
- Create and distribute forecasts (1-7 days) to public and stakeholders.
- Disseminate warnings (specific alerts) to disaster management and public.
- Protect lives and property.

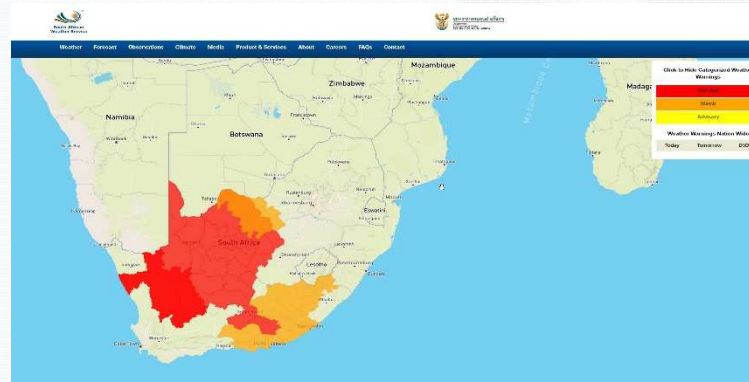
 Please be advised about the following for 24-28 Oct 2019
Provinces affected: GAU, LIM, MPU, NW, FS 

ADVISORIES:

1. A heat wave with persistently high temperatures is expected over the eastern parts of **North West** and **Free State** from **Thursday**, the **Lowveld of Mpumalanga** and **Limpopo** from **Friday**, the entire provinces of **Limpopo**, **Mpumalanga** and **Gauteng** from **Saturday**, continuing until at least **Monday**.
2. Hot and humid weather will result in extremely uncomfortable conditions over the **Lowveld of Mpumalanga** and **Limpopo** from **Friday**, spreading across the provinces on **Saturday**, and continuing until at least on **Monday**.
3. Extremely hot conditions are expected over the **Lowveld of Mpumalanga** and **Limpopo** on **Friday**, spreading across the provinces on **Saturday** until at least on **Monday**.

PRECAUTIONS:
EXTREMELY HOT AND HEAT WAVE CONDITIONS – Stay indoors in a cool room near a fan if possible. The old and infirm must take extra care to stay hydrated and cool. Avoid strenuous outdoor activity, playing excessive sport and hard labour. Dress in light weight clothes and drink plenty of liquids NOT alcohol. Ensure that pets and livestock have enough access to water.

Listen to the radio or TV for warnings and obey the instructions from disaster management officers.



 **SA Weather Service** @SAWeatherServic · 1h

⚠️ Warning ⚠️ :31/10/2019 16h00 TO:31/10/2019 18h00 Severe Thunderstorms- are observed just south of Chrissiemer in the Msukaligwa Municipality of Mpumalanga resulting in heavy downpours and large amounts of small hail moving north-east over the N17.

🗨️ 2 ❤️ 6 📤


South African Weather Service

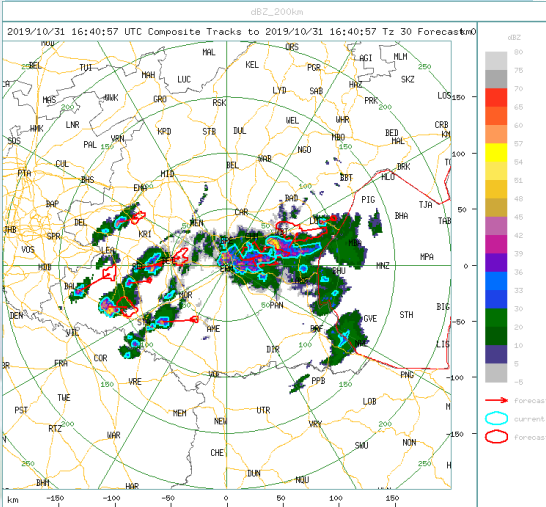
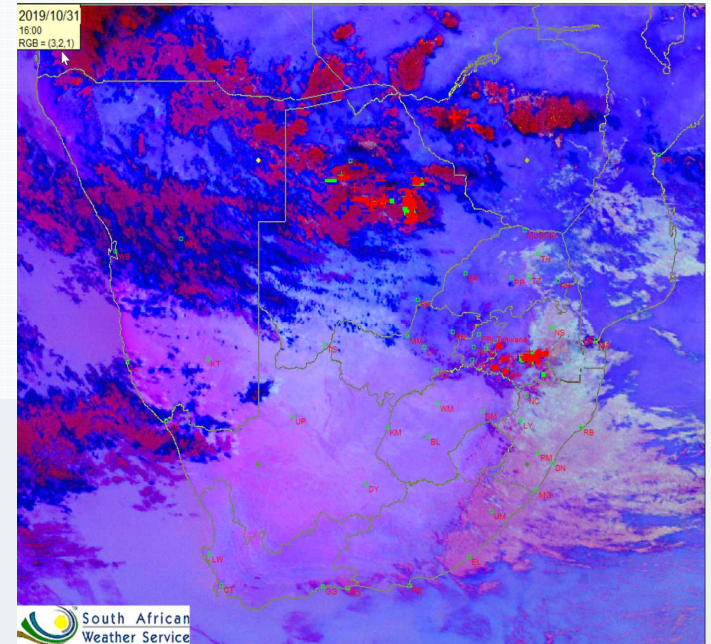
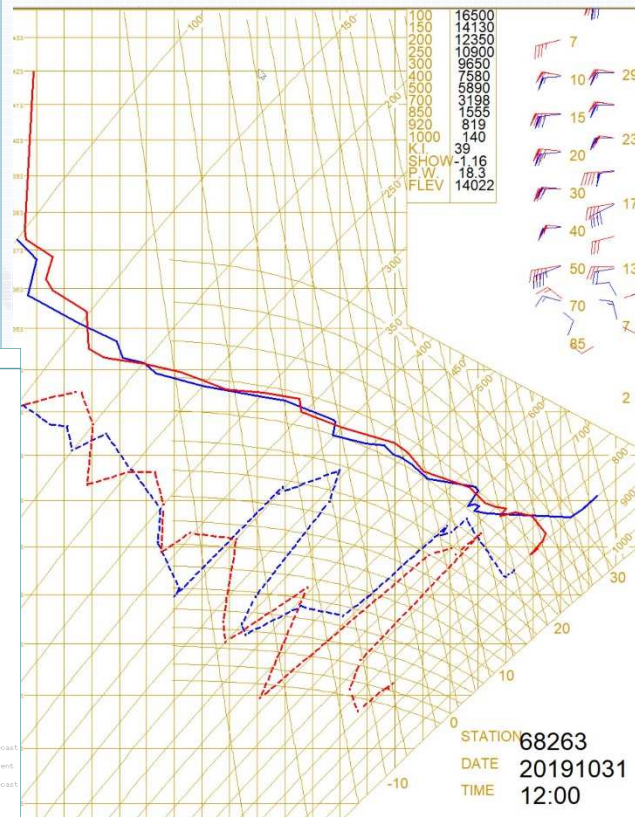
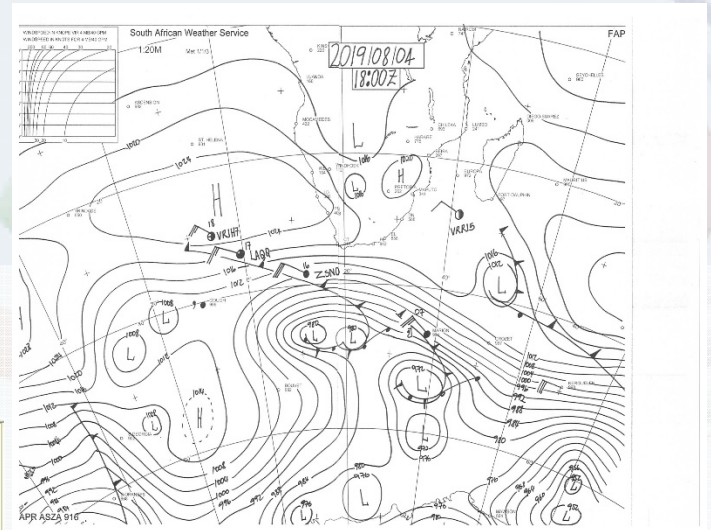
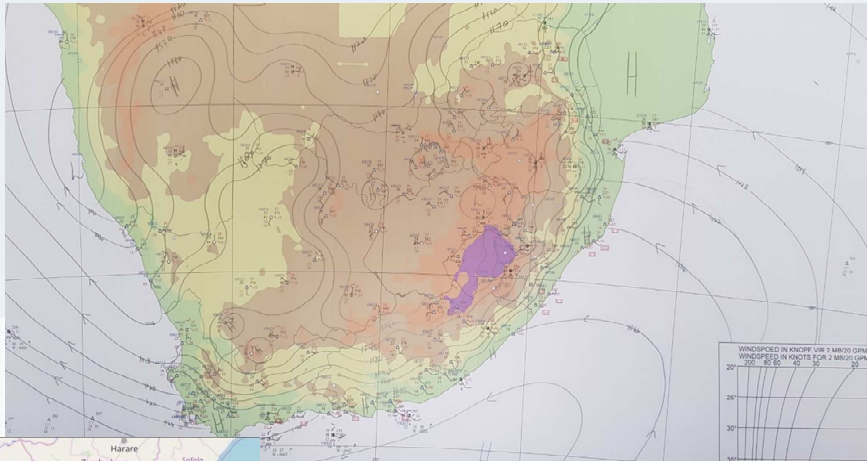
Forecasting

6 Regional offices

- Pretoria (Head-office for Marine and Public)
- Bloemfontein (public and aviation)
- Cape Town (public, marine and aviation)
- Port Elizabeth (public, marine and aviation)
- Durban (public, marine and aviation)
- OR Tambo (Head-office for Aviation)
- ~40 operational forecasters across the country.
- Head office and Head office for Aviation operational for 24 hours.
- Remainder of Regional offices work 8-10 hour shifts and closes at 9 PM.
- Meteorological observers and technicians also work with forecasters at each regional office.

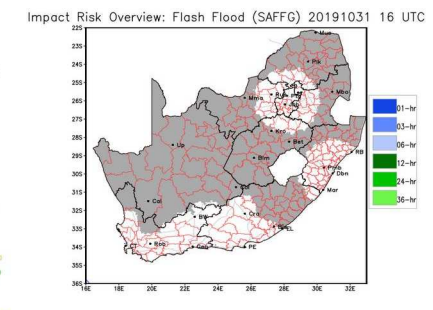
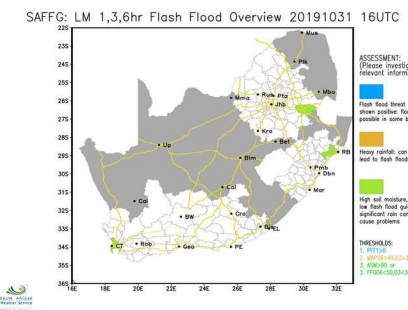
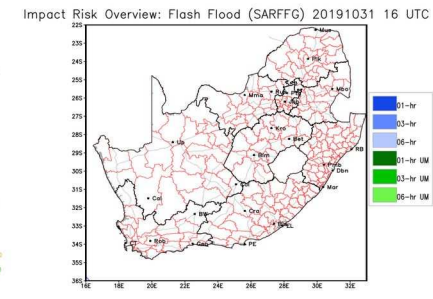
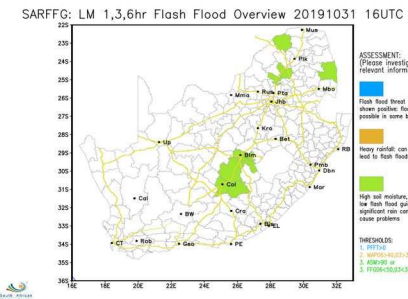
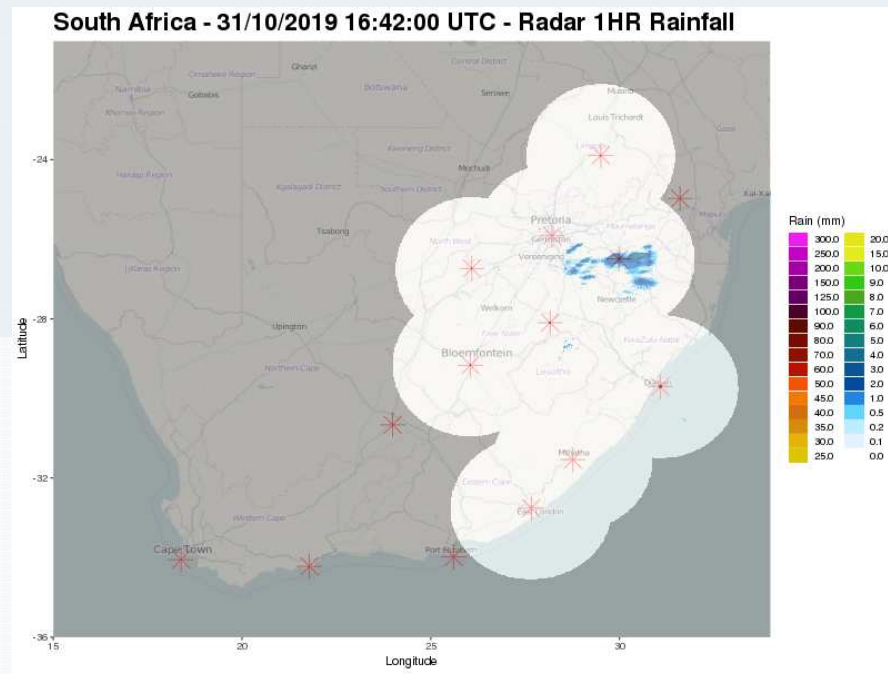
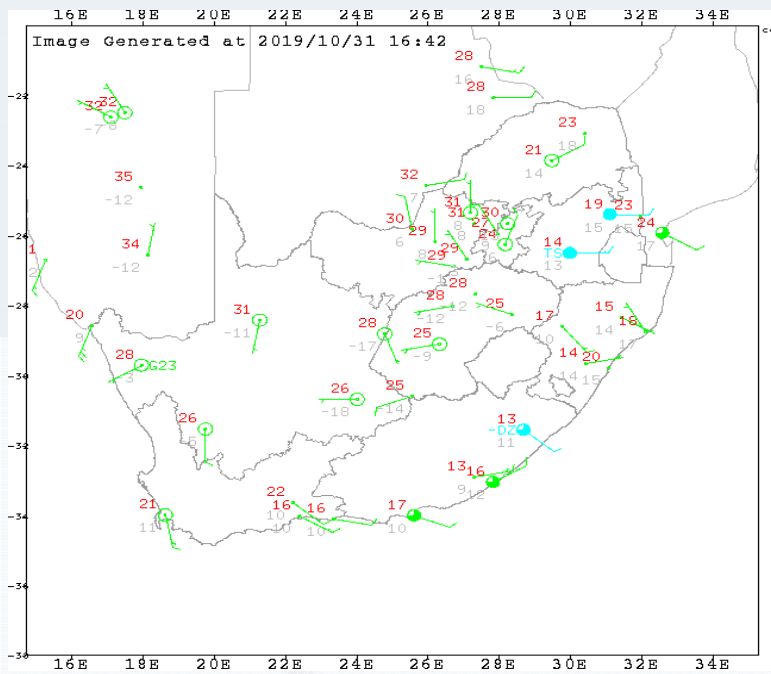
Forecasting

- The following observations used in operational forecasting:
 - Synoptic station map (300 observational stations)
 - Upper air station map (12 operational upper air stations)
 - Satellite data
 - Amdar data
 - Buoys and Ship data from Atlantic and southern Indian ocean
 - Model data: ECMF, GFS, UK MET Unified Model (1.5, 4 and 10km runs), ICON (Germany), WRF, Ensembles etc.
 - Radar Data

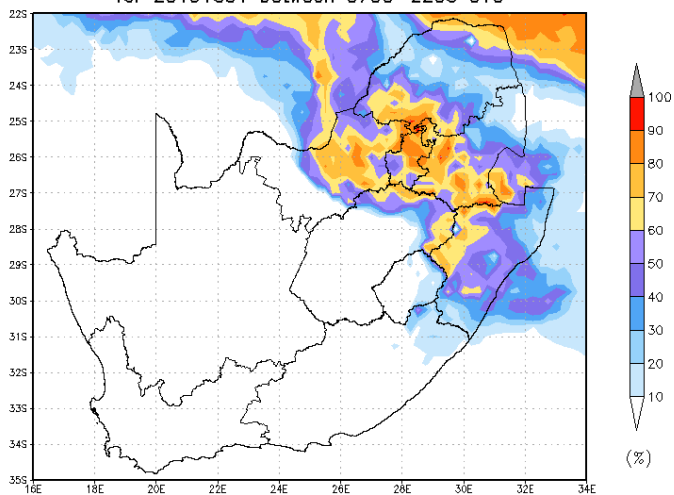


2019/11/25

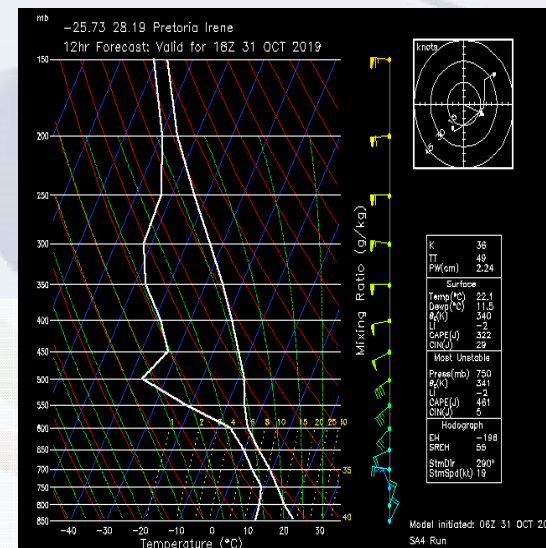
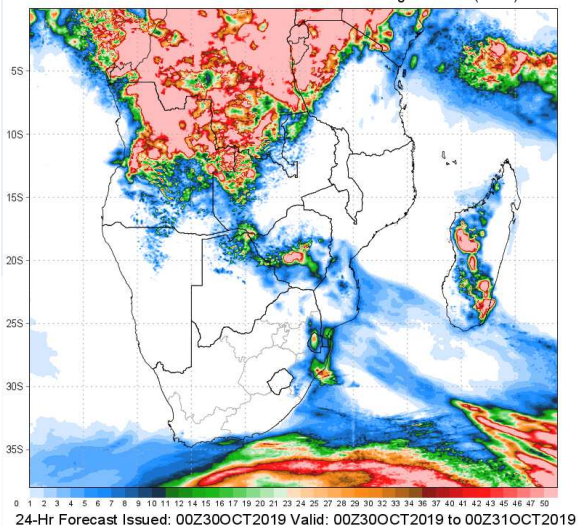
Templ ref: PPT-ISO-colour.001 Doc Ref no:



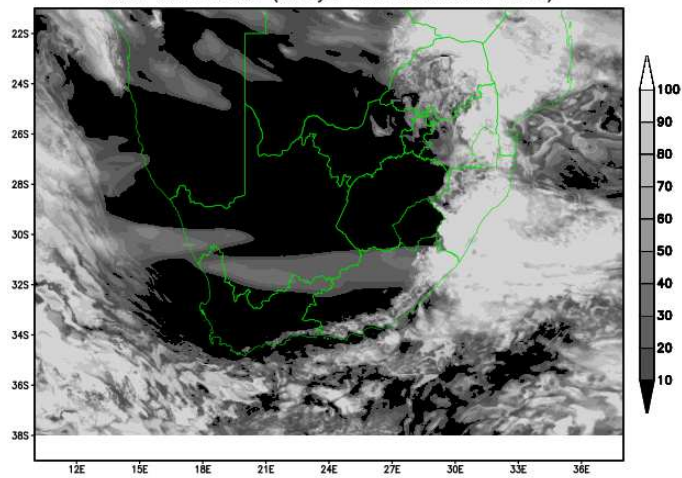
Lightning Threat Index – Probability of lightning occurrence for 20191031 between 0700–2200 UTC



MULTI-MODEL ENSEMBLE - 24-Hr Total Average Rainfall (mm)

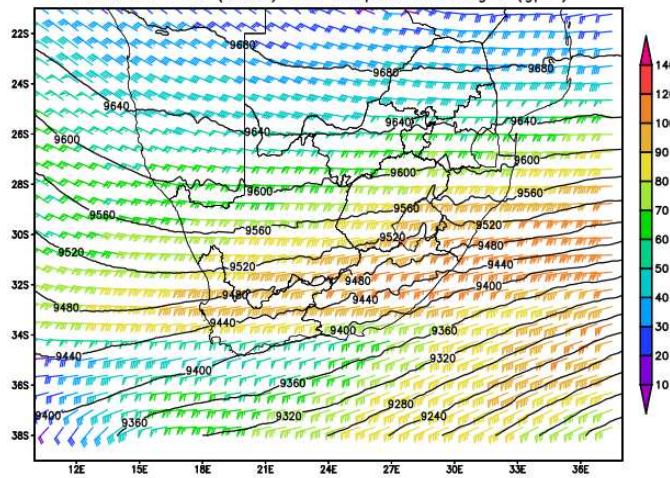


UM 4km horizontal resolution – SA4 Run: Total cloud cover (% layer and convective cloud)



4hr Forecast from 06Z 31 OCT 2019 – for 10Z 31 OCT 2019

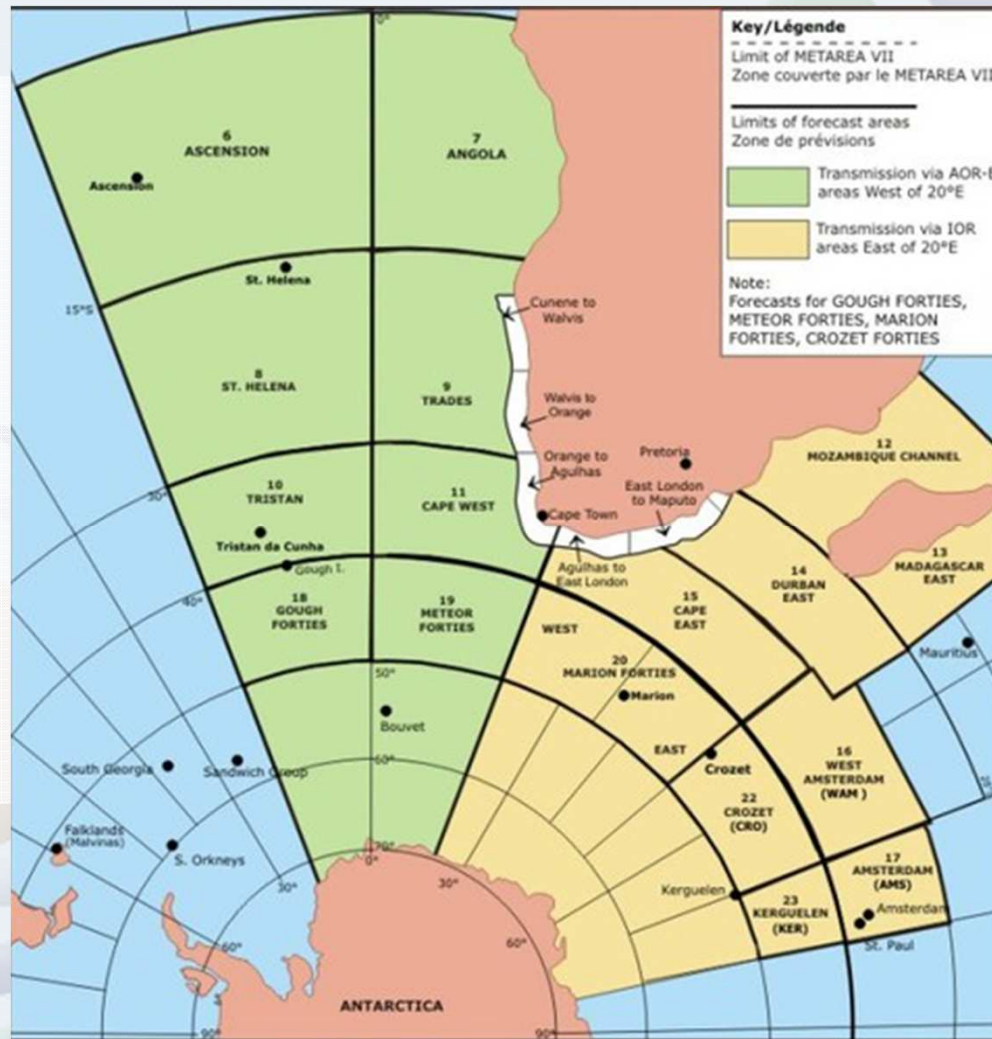
UM 4km horizontal resolution – SA4 Run: 300hPa Wind (knots) and Geopotential height (gpm)



9hr Forecast from 06Z 31 OCT 2019 – for 15Z 31 OCT 2019



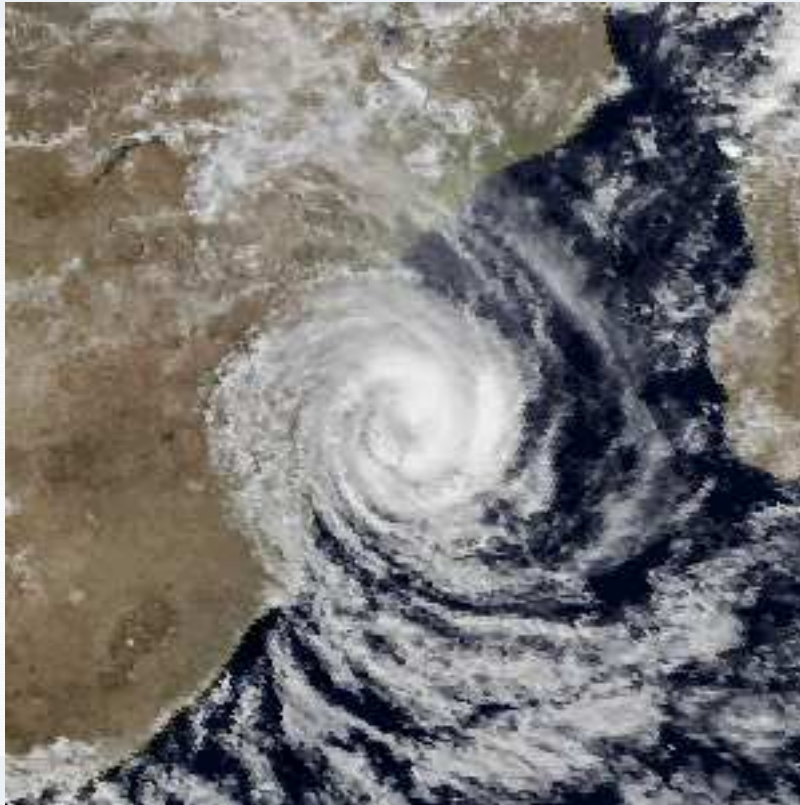
TROPICAL CYCLONES: SOUTHERN AFRICA



TROPICAL CYCLONES: SOUTHERN AFRICA

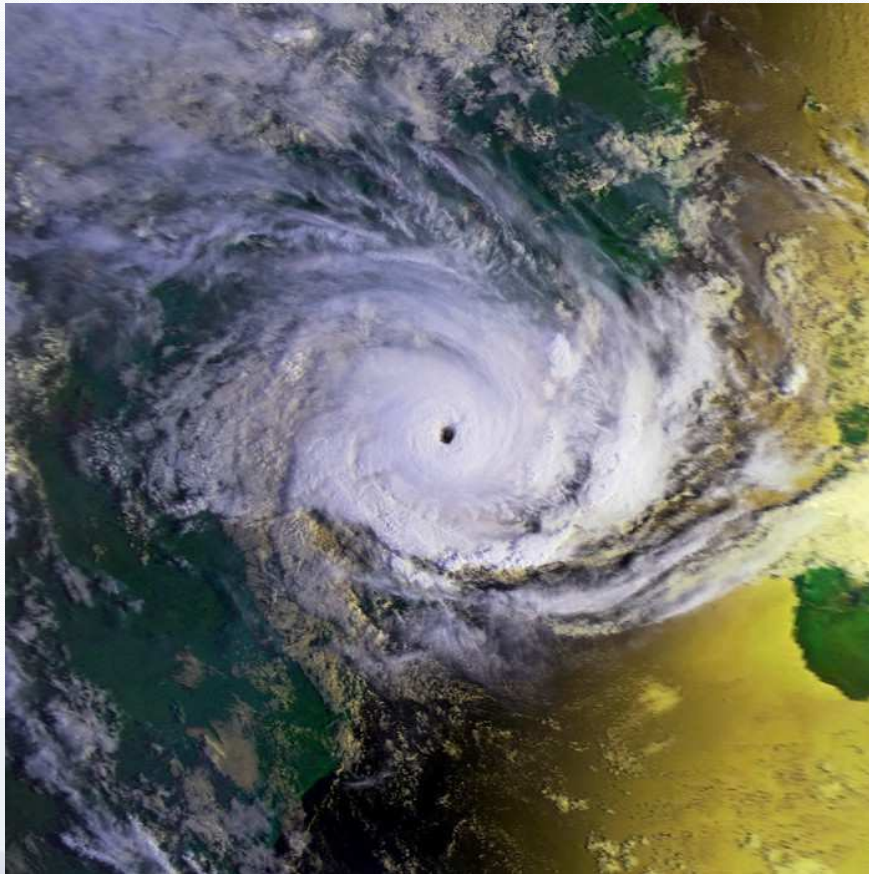
- Domoina 1984
- Leon-Eline 2000
- Irina 2011
- Dando 2012
- Funso 2012
- Dineo 2018

TROPICAL CYCLONES: DOMOINA 1984



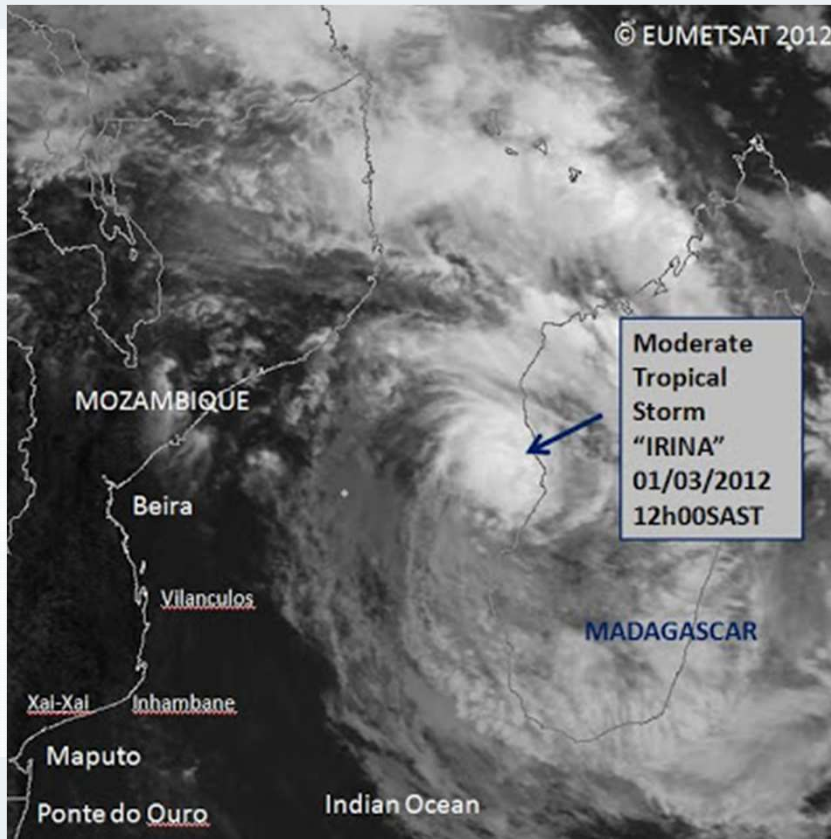
- First tropical cyclone to cause extensive flooding and damage in SA
- Resulted in 60 deaths *within* South Africa
- Damaged 500,000 properties
- Total damages estimated to be 70 million US dollars
- Rainfall peaked at 950 mm in Northern KZN
- Pongola river course was altered

TROPICAL CYCLONES: ELINE 2000



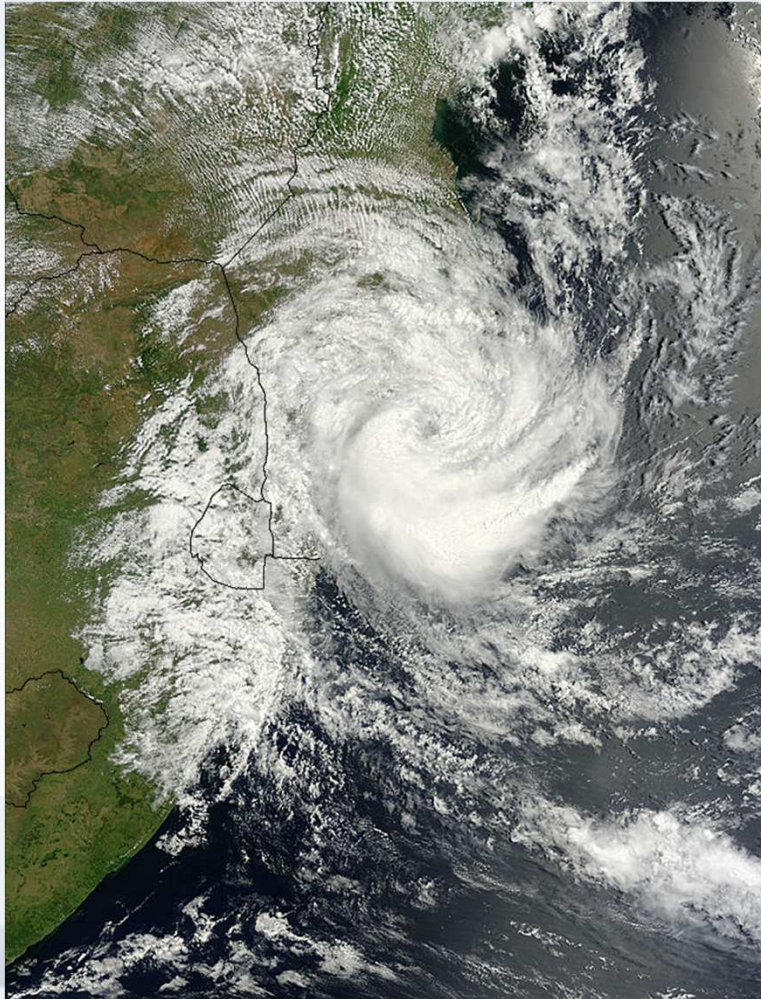
- Caused 503 mm of rainfall in the Northern Limpopo Province
- Limpopo River burst its banks
- Flood caused 12 hospitalisations and 21 deaths
- 80,000 people displaced
- Estimated damages of 300 mil US dollars (Limpopo only)

TROPICAL CYCLONES: IRINA 2011



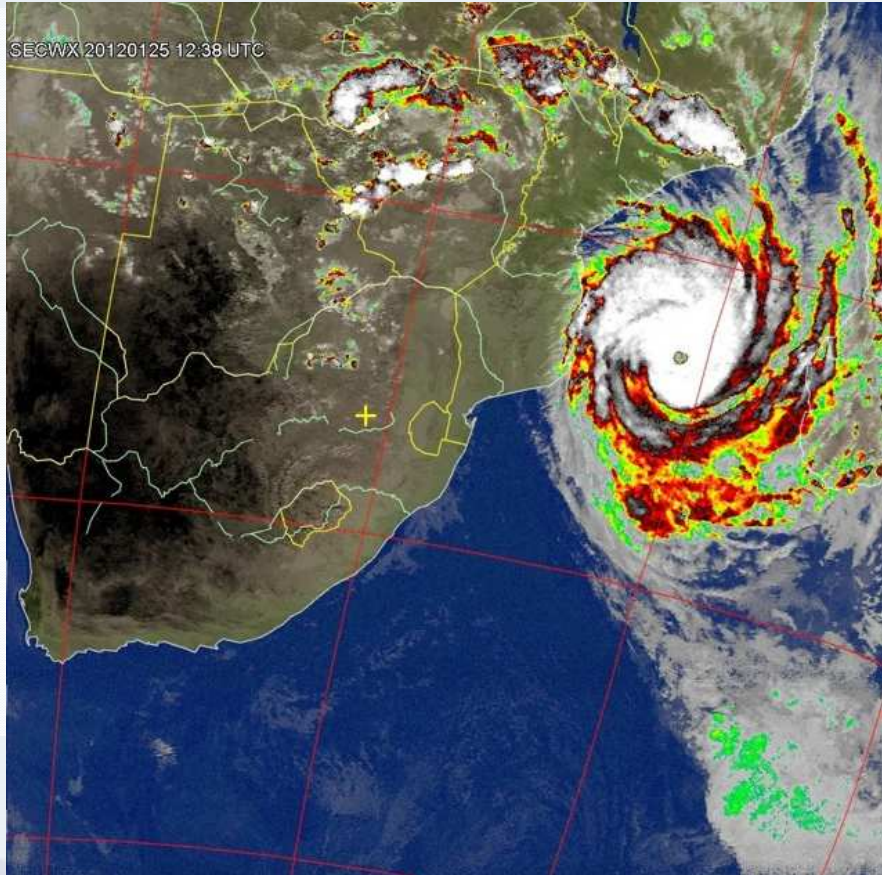
- 4 deaths in South Africa
- Durban Port was closed due to significant waves

TROPICAL CYCLONES: DANDO 2012



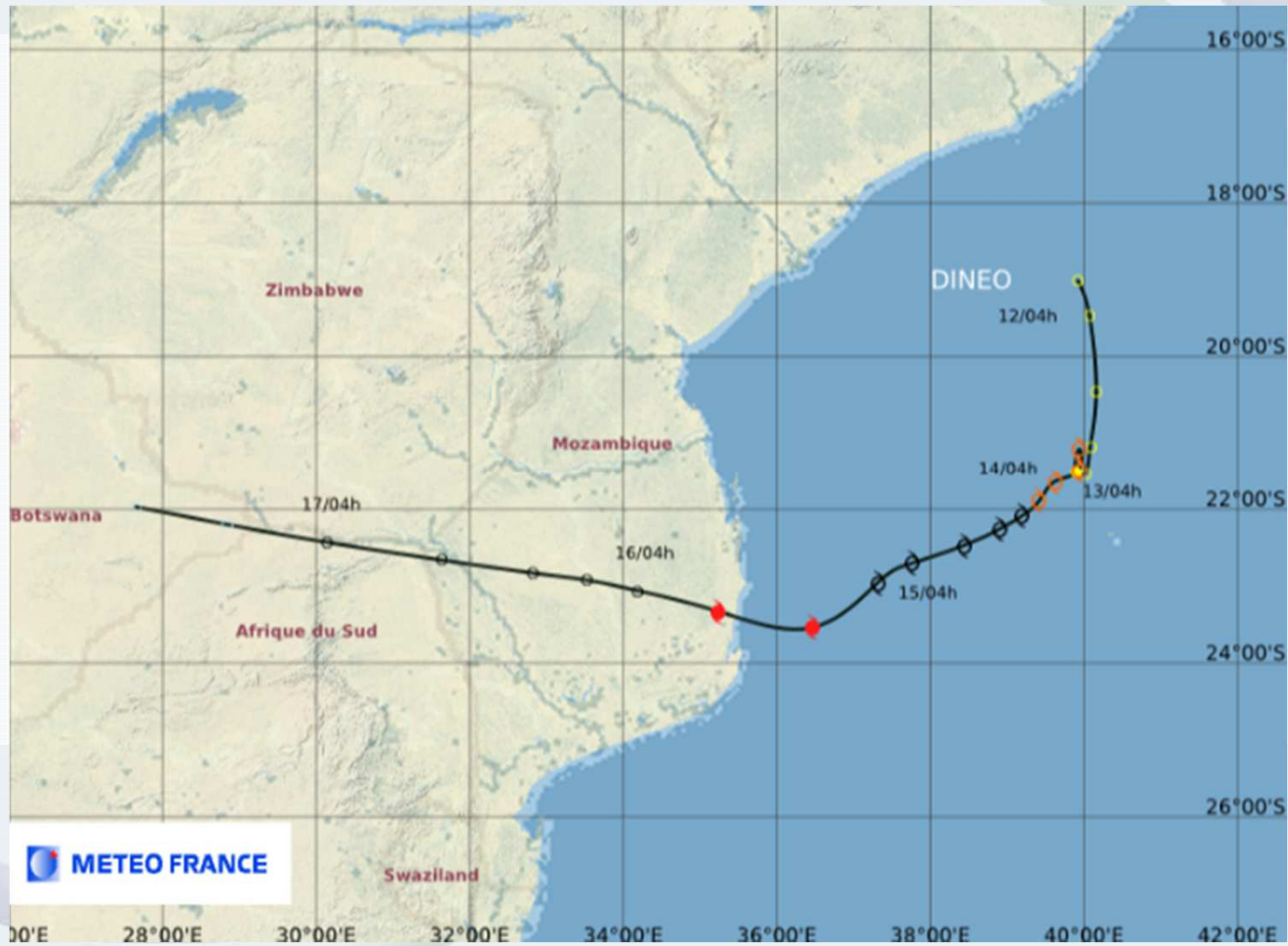
- Flooding in Limpopo and Mpumalanga Provinces
- Killed six individuals in Mpumalanga

TROPICAL CYCLONES: FUNSO 2012



- Caused 10 deaths in Mozambique and South Africa
- Exacerbated flooding caused by Dando earlier that year in Northern parts of the country

TROPICAL CYCLONES: DINEO 2018



TROPICAL CYCLONES: DINEO

CURRENT PRACTICES

La Reunion issues tropical cyclone warnings and alerts via FQIO20 and WTIO20 for the Metarea.

In cases where the cyclone moves along or near the South African coast we take responsibility for the forecasting and relevant alerts.

AREA 2:

MARINE METEOROLOGICAL BULLETIN FROM METEO-FRANCE/LA REUNION ON AREA
ACK (AMSTERDAM-CROZET-KERGUELEN)

DATE: 19/11/01 AT 1700 UTC

AVERAGED WIND SPEED ON BEAUFORT SCALE. (WIND GUSTS MAY BE STRONGER
THAN AVERAGES GIVEN HERE) .

PART 1: WARNING :

- STORM FORCE 10 EXPECTED OVER AMS THEN KER.



TROPICAL CYCLONES: DINEO

001
FQZA31 FAPR 011700

SECURITE:

WEATHER BULLETIN FOR THE HIGH SEAS FOR METAREA VII.
ISSUED BY THE SOUTH AFRICAN WEATHER SERVICE ON THE
01st of NOVEMBER 2019 AT 17:00 UTC.

FOR SOUTH-EAST SECTOR OF METAREA. VII, PREPARED BY REUNION,
SEE AREA 2 BELOW.

NOTE: WX OBSERVATIONS.

COULD ALL VESSELS EXPERIENCING UNEXPECTED, SEVERE WX/SEA
STATE PLEASE MAKE EVERY EFFORT TO REPORT THIS TO SANS VIA
CAPE TOWN RADIO.

AREA 1:

FORECAST VALID FROM 012200 to 022200 UTC:

WIND IN KNOTS, WAVE HEIGHTS IN METERS. NO SEA STATE
GIVEN IF WAVES LESS THAN 3M.

NOTE THE WIND SPEEDS QUOTED HERE ARE THE EXPECTED AVERAGE
SPEEDS.
INDIVIDUAL GUSTS MAY EXCEED THESE VALUES BY A FACTOR OF
UP TO 1.5.
WAVE HEIGHTS ARE SIGNIFICANT WAVE HEIGHTS WHICH MAY BE
ACCOMPANIED BY INDIVIDUAL WAVES 1.5 TO 2.0 TIMES HIGHER.
THESE ESTIMATES OF WINDS AND WAVES DO NOT TAKE
INTO ACCOUNT THE ENHANCING EFFECTS OF THE AGULHAS
CURRENT OFF THE SOUTH AFRICAN EAST COAST.



TROPICAL CYCLONES: DINEO

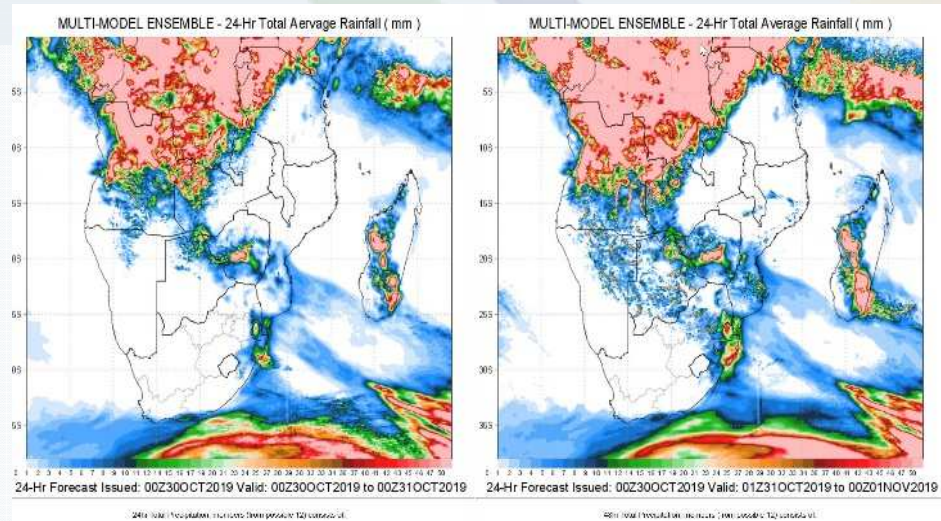
GALE FORCE WARNINGS:

1. ST HELENA: NW 35 in the south-west.
2. TRISTAN: Cyclonic 35 to 40.
3. CAPE WEST: NW 35 in the east first half of the period.
4. METEOR FORTIES: NW 35 to 40 in the east at first, otherwise SW 35 to 40.
5. CAPE EAST: W to NW 35 in the west spreading to the east by end of the period.
6. DURBAN EAST: NE 35 in the west.
7. MOZAMBIQUE CHANNEL: SE 35 in the south-east at first.
8. MARION FORTIES EAST: W to NW 35 in the west by end of the period.

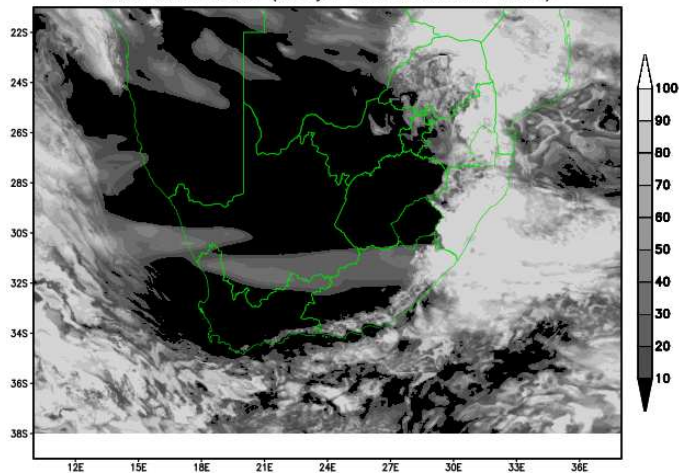
Models used:

- UNIFIED MODEL (UK MET OFFICE)
- ECMWF
- GFS
- ENSEMBLES

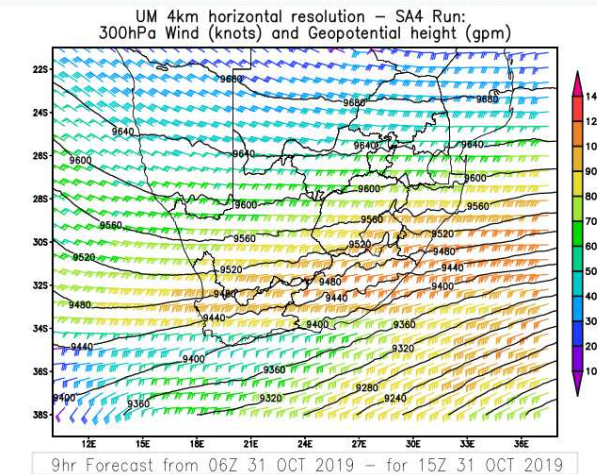
TROPICAL CYCLONES: MODELS



UM 4km horizontal resolution – SA4 Run:
Total cloud cover (% layer and convective cloud)



4hr Forecast from 06Z 31 OCT 2019 – for 10Z 31 OCT 2019
2019/11/25



9hr Forecast from 06Z 31 OCT 2019 – for 15Z 31 OCT 2019



TROPICAL CYCLONE: EX-DINEO



MEDIA RELEASE

16 February 2017: 11:00

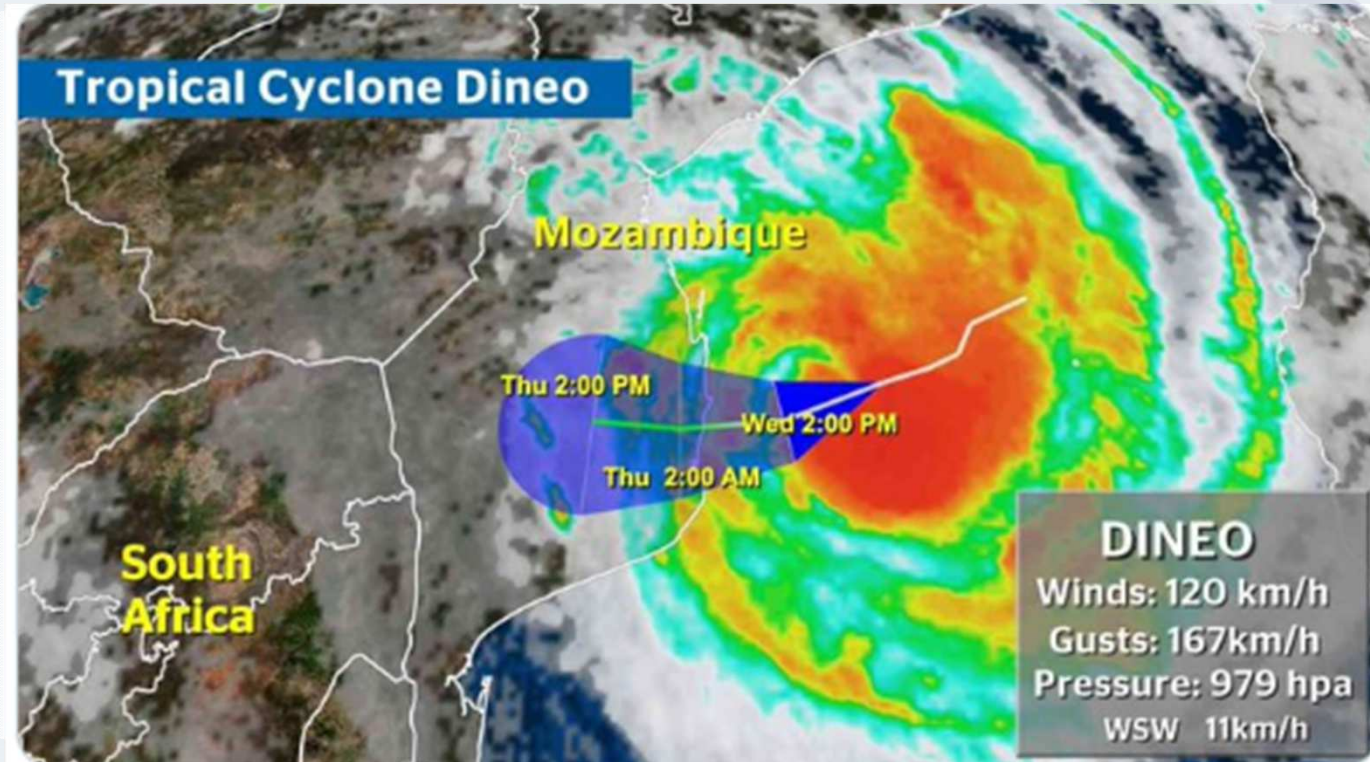
Ex tropical cyclone "Dineo" now over southern Mozambique

Tropical cyclone Dineo made landfall near Inhambane, southern Mozambique between 8pm and midnight last night, Wednesday, 15 February. Strong winds, exceeding 100km/hr as well as torrential rainfall and very rough seas were most likely the main weather-related impacts.

While no direct measurements of rainfall are available in the immediate area of landfall, given the extreme nature of the weather, satellite-derived estimates of overnight rainfall strongly suggest that at least 100 to 200mm of rain (or even more) occurred overnight, along the coast and adjacent interior, between Inharrime in the south and Vilanculos in the north. Confidence in the aforementioned rainfall estimate is further supported by overnight rainfall measurements at Vilanculos (110mm) as well as Maputo (33mm).

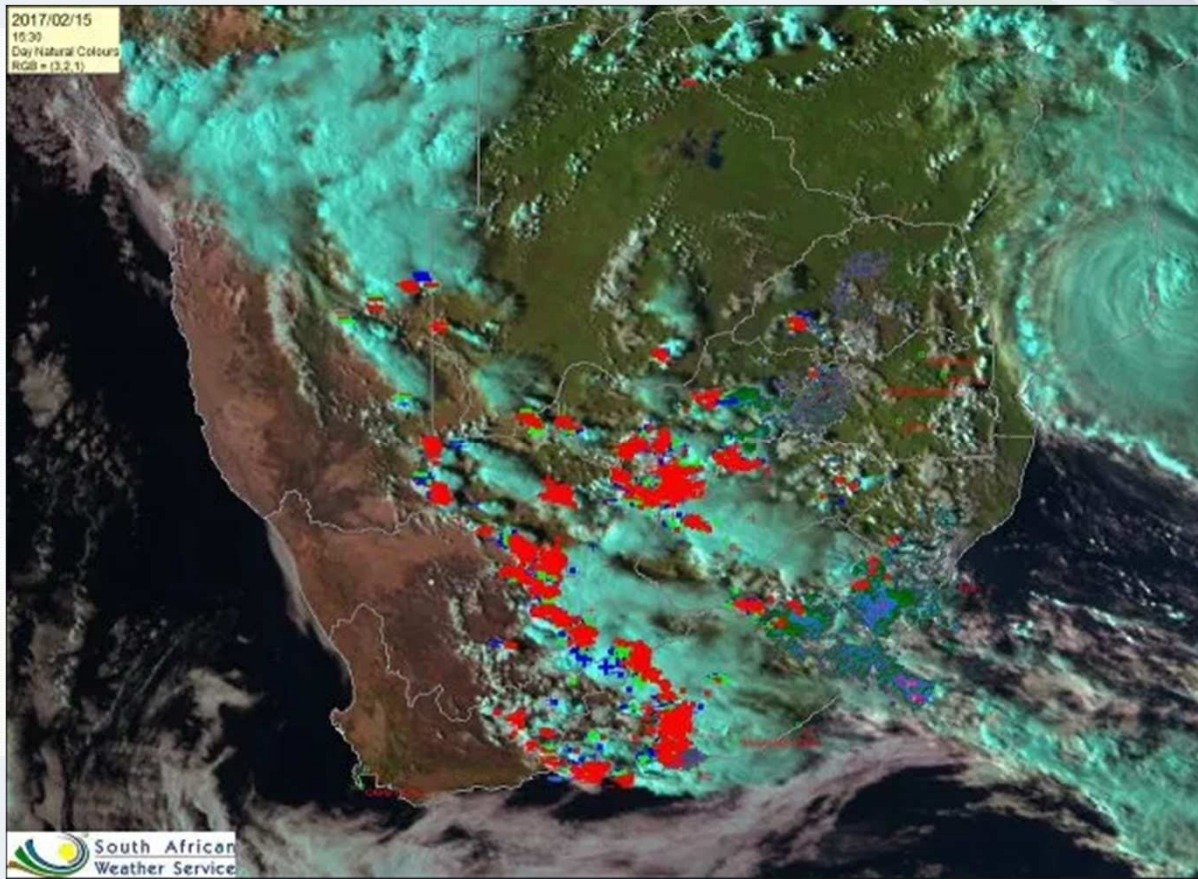


TROPICAL CYCLONE: EX-DINEO



*graphic by ENCA

TROPICAL CYCLONE: EX-DINEO



Impact Based WARNING

NFC
01 EcoPark, EcoGlades, Block B
Centurion



157

E-Mail: nfc@weathersa.co.za
Tel: 012 367 6041

2019/10/31

Warning #1

Issued: 31/10/2019 @ 16:00

LEVEL 2 YELLOW WARNING for THUNDERSTORMS

WARNING valid 16:00 (SAST) on 31/10/2019 Until 18:00 SAST on 31/10/2019

Affected DM / LM / Metro

, Msukaligwa,

Short Message

There is a High likelihood of Minor impacts to occur over

parts of Msukaligwa (south of Chrissiemeer) moving north-eastwards.

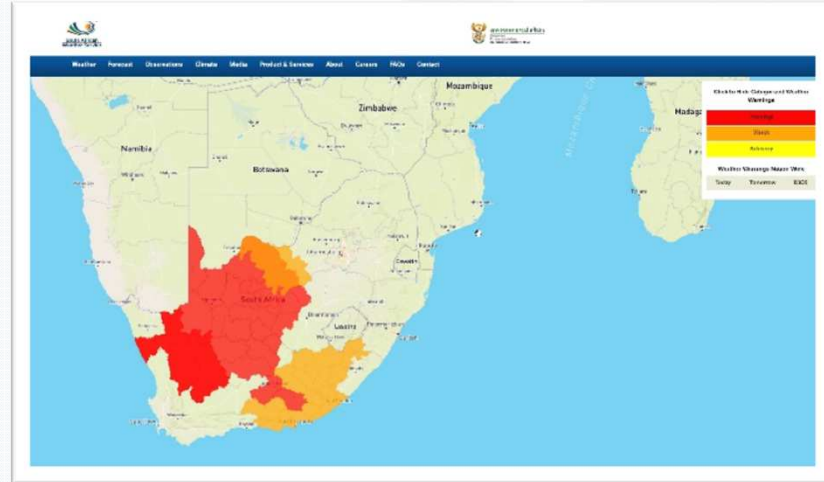
Discussion

Heavy downpours, large amount of small hail from these storms which are moving over the N17 which could disrupt traffic.

Impacts

Difficult driving conditions and minor road accidents, Localised flooding of susceptible roads, low-lying areas and bridge, Large amounts of small hail over an open area.

THUNDERSTORMS					
LIKELIHOOD	High		2		
	Medium				
	Low				
	Very Low				
	3	Minimal	Minor	Significa	Severe
IMPACT					

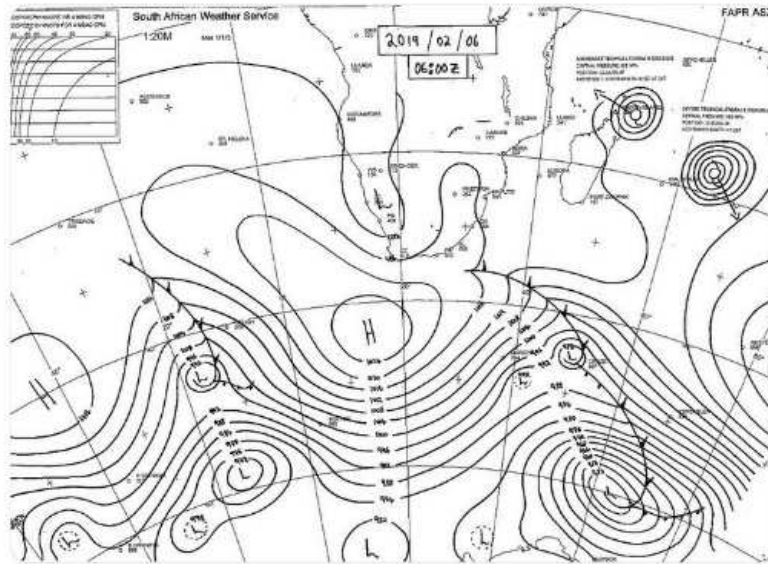


DISTRIBUTION



SA Weather Service @SAWeatherServic · Feb 6

2 Tropical Storms east of Madagascar. Moderate tropical storm 9 (Gelena) moving slowly north-west and Severe tropical storm 8 (Funani) moving slowly south-east. Not expected to affect SA at this stage.



Disaster management receives the alerts and warnings by first priority

Alerts and warnings issued to the public via social media, media release, TV stations, radio stations and directly to other stakeholders



