

# SAN FRANCISCO'S Amenities



**SMITHGROUP**

**JCDecaux**



# SF Arts Commission

## Civic Design Review

Public Works in partnership with JCDecaux proposes the removal of the existing 25 public toilets and 114 kiosks and their replacement with new toilets and kiosks. The original agreement with JCDecaux is expiring and these efforts are part of a new enhancement program to replace the existing street furniture with up-to-date technology and a more contemporary design. The new agreement is similar in that in exchange for allowing general advertising on the kiosks, JCDecaux would cover the cost of design, fabrication, installation and daily maintenance of the street furnishings. In addition the agreement includes funds for expanding the successful staffing program as well as the fabrication of double toilets (one ADA, one not) at specific high use areas like Twin Peaks and the Port. The new agreement also allows the City to buy 15 additional toilets (for locations to be determined).

Both the public toilet and the kiosk need to fit in well within the city as a whole. There are a variety of existing locations – in neighborhoods, adjacent to parks, along busy pedestrian and transit corridors, along the street and in tourist destinations. The approach is to balance the role that each element plays within a specific setting while contributing to a city-wide vocabulary that belongs to the larger urban environment, including the contemporary designs of the new BART portals on Market Street and the new café kiosk at Civic Center Plaza. The street furnishings can serve as the framework for public communications, news and public information in addition to providing for advertising that makes the program financially viable. They can also present a robust and changing program of graphics that reinforce the identity of a neighborhood or district and highlight some of their unique features and attractions. Today, street furnishings can take advantage of the most recent and continually expanding opportunities for communications created by the latest digital and WIFI devices. They can also create entrepreneurial opportunities for incubators and artistic expression for talent seeking a public setting.

Last year Public Works and JCDecaux proposed an initial design concept to the Civic Design Review. The design program was to be understated and to recede to the background of urban life. After working closely with CDR in adjusting the design, the full SF Arts Commission approved the proposal. But, at the same time Public Works received feedback from the Historic Preservation Commission, the community and the Board of Supervisors regarding the lack of public process and a desire to create a more ambitious, forward-thinking and timeless design, one that could be an asset on the street for 10-20 years.

With that feedback, Public Works in partnership with JCDecaux initiated a streamlined invitation-only design competition among 12 diverse San Francisco-based architects and industrial designers. With the program parameters in hand, the invited teams were asked to develop proposals at a conceptual/schematic design level. The jury for the initial round consisted of City staff from Public Works, SF Arts Commission, Historic Preservation Commission, Port of San Francisco and 6 outside experts (a diverse group of San Francisco-based architects). The competition was “blind” so that entries were anonymous to the jurors, and the jurors were unknown to the entrants. The competition focused on the exterior designs, as the interior and mechanics of the structures is designed by JCDecaux.

The jury prioritized proposals that were one-of-a-kind and designed specifically for San Francisco and its vision forward. The design was not to be generic or merely utilitarian. And, by being less thematic or historicist in nature, the design would not fall back on images and identities derived from other places or from other eras.

The jury selected three finalists whose projects presented innovative and unique designs that spoke to the needs and aesthetics of our 21st century iconic city. The three designs were then shared with the Board of Supervisors, community groups, the press, and were exhibited on line, at the SF Main Library in Civic Center and the Heart of the City Farmers Market in UN Plaza. There were several articles about the finalists' design proposals including in the SF Chronicle, SF Examiner, SF Weekly, SF Better Streets and Curbed San Francisco. More than 200 individual responses were received through an online survey and in person, representing over 20 zip codes in San Francisco. Public Works staff, JCDecaux and community groups joined the vast majority of individual responses in choosing the SmithGroup proposal as the competition winner, describing the design as "clean, safe and inviting," "iconic and unique," "sculptural," "classic" and one that "wraps fluid beauty around function."

The proposed design is forward-thinking, combining natural elements and environmental sustainability with modern technology and materials. This 21st-century street furniture reflects our San Francisco values, as we invest in a public realm designed with dignity, inclusivity and beauty. The design of the new toilets and kiosks would complement the contemporary and elegant designs of the soon-to-be completed BART portals and the café kiosk at Civic Center Plaza, and will help set a city-wide street furnishings aesthetic.

The kiosks and toilets would be curved, fairly abstract, sculptural structures: the toilet would be roughly a rounded hour-glass shape in plan, and the kiosks, a rounded triangle. In elevation, they are wider at the middle and taper towards the top and bottom. Both would have either a sculptural, polished concrete base or a painted cast-iron base. A bowed glass surface would cover the advertising panels on the kiosks and seamlessly connect with the adjoining sculpted surfaces. The quality of materials and detailing and a high level of craftsmanship will also add to the uniqueness of the streetscape furnishings. JC Decaux's reputation and commitment to quality of engineering, design, fabrication and implementation as well as a high level of management and maintenance are touch-stones that, to a great extent, attribute to their international success.

The existing and the replacement models of the public toilet are self-cleaning, handicapped accessible and connected directly to city sewer, water and electrical lines. The proposed single toilet is approximately 9 feet wide, 14 feet long and 13 ½ feet tall, with the double toilet approximately 4 feet longer.

Both the existing and proposed models of the kiosks range from 14 to 17 feet tall, are 5 to 6 feet in diameter, and have three illuminated vertical panels approximately 12 feet tall. 69 of the existing kiosks were designed to contain newsstands. In the new contract, there will be approximately 20 multi-service kiosks that will serve micro-businesses, way-finding and neighborhood services, with approximately 94 standard advertising kiosks with some including digital panels (with the same total of 114 kiosks). All of the kiosks, current and proposed ones, have 3 panels, with one panel designated for City/public service uses and two panels for general advertising purposes. The total number of advertising panels remains the same in the proposed contract: 114 kiosks x 2 panels = 228 total panels.

In the new contract, on 70 of the new 114 kiosks, there can be up to two changeable electronic displays. All images displayed on these will be silent (no audio) and static, with no video/animation as per Article 6 of the SF Planning Code. Blocks of time on the displays would be sold in 8-10 second increments, so the most rapid rate of change will be every eight seconds. Advertisers generally buy several blocks of time, so an 8-second display period will be an unusual condition. This refresh rate is consistent with the SFMTA's displays in its Clear Channel MUNI bus-shelter contract and Public Works' Clear Channel pedestal-mounted newsstand contract, and conforms to international industry standards. Electronic light sources will represent a negligible or marginal incremental increase over existing lighted-panel sources. The kiosks will be equipped with wireless Internet connections, which will be concealed within each kiosk, will not be visible to the public, and will require no new utility connections.

# SAN FRANCISCO'S AmeniTREES



**Simplicity in its Kit of Parts**  
The AmeniTREES are designed as kits of parts for ease of installation and maintenance. The gardeners prepare individual trees (either a variety of native plants, or a kit of parts assembly in small, living form) and assemble them into a variety of configurations. The design allows for the use of various plant species, including native and non-native plants. In addition, the AmeniTREES can also serve as a tree with a built-in bench for social or digital advertising. The interior shell for the structure consists of a glass and metal skin to provide some protection while protecting the technology within from the elements and vandalism.



- Legend**
- Glass
  - Metal
  - Plant
  - Bench
  - Digital Advertising
  - Water
  - Soil
  - Root
  - Tree
  - Bench
  - Digital Advertising
  - Water
  - Soil
  - Root
  - Tree

**A Water Story**  
The gardeners design with a sense of possibility and imagination, an essential element that is very much of San Francisco. The many variations of the garden design create an opportunity for water collection, treatment and reuse. The design can be designed to collect rainwater, which is pure, and itself to wash the plants, water the gardeners in their office. The design can be used to collect rainwater and use it to water the plants, water the gardeners in their office. The design can be used to collect rainwater and use it to water the plants, water the gardeners in their office.



## SMITHGROUP JJR

**Variations for a City of Unique Neighborhoods**  
These variations are based on their design and adaptability - functionality to meet the needs. The AmeniTREE design consists of a variety of plant species, including native and non-native plants, and a variety of materials. The AmeniTREE design consists of a variety of plant species, including native and non-native plants, and a variety of materials.





**AmeniTREES**

**SAN FRANCISCO'S AmeniTREES**

- EQUIP ACCESS
- SUSTAINABILITY
- MAINTAINABILITY

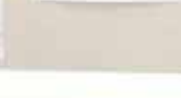
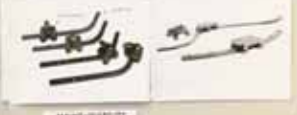
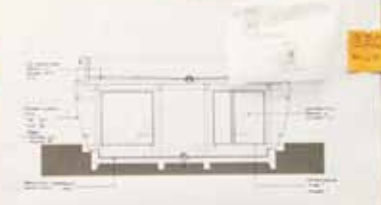
**REFLECTING THE NEIGHBORHOOD**

**MAINTAINABILITY**

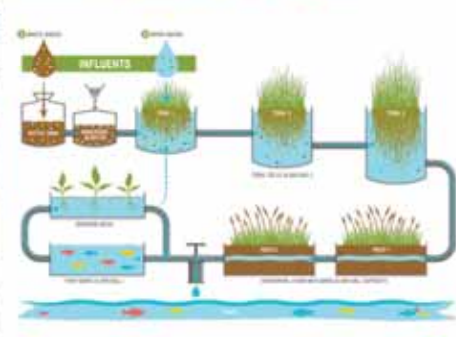
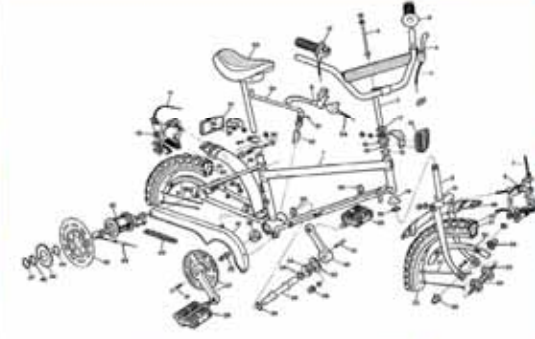
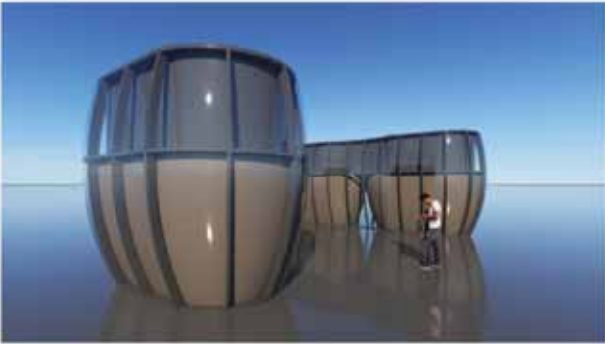
**SUSTAINABILITY**

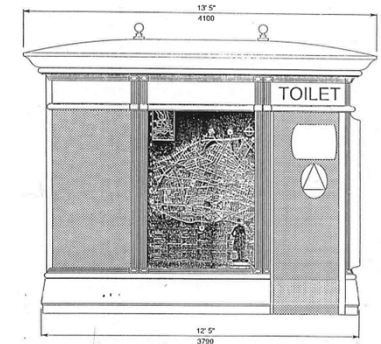
**TECHNOLOGY**

**SCAPE**

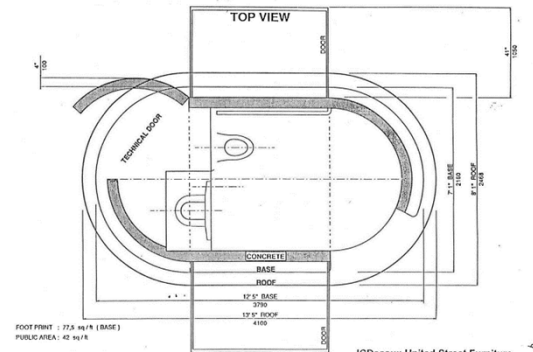


# INSPIRATION



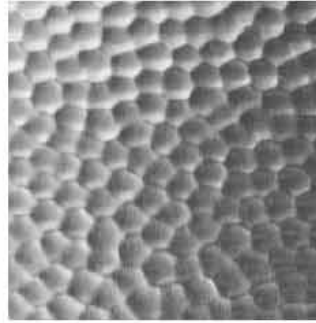


JCDecaux United Street Furniture  
page 1994



JCDecaux United Street Furniture  
Copyright 1994

# Public Toilets



Textured  
Stainless Steel

option 1



option 2



Perforated  
Stainless Steel  
(base of door)



Durable  
Concrete base

## Design Approach

### **Simplicity in its Kit of Parts**

The furnishings are designed as a kit of parts for ease in buildability and maintenance. The toilet's unique sculptural shape displays a sense of complexity, yet, the kit of parts assembly is simple having been composed of repeated and rotated panels. The exterior shell consists of a durable concrete base and formed texture stainless steel panels for the walls and door. A fiberglass roof includes a skylight for daylight illumination inside.

### **Maintainability**

State of the Art engineering to deliver ruggedized furniture for everyday useage. They are designed to keep the challenges of structures in an urban context. This includes climate, graffiti, and pedestrian activity.

### **Safety**

Illumination of the toilet using LED lighting for enhanced perception of safety and ease of use. Lighting is located around door frame and in seam between concrete base and SS panels





Single Occupancy

Single Occupancy



Perspective - From Sidewalk



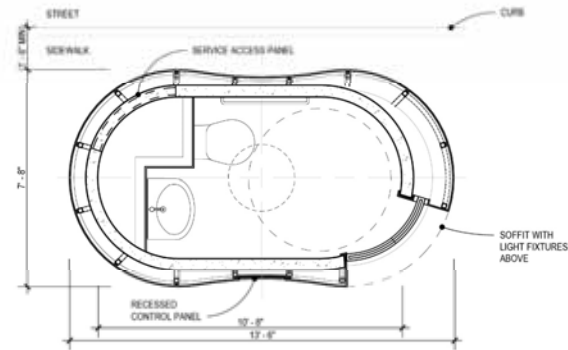
Perspective - From Street



Elevation - From Sidewalk

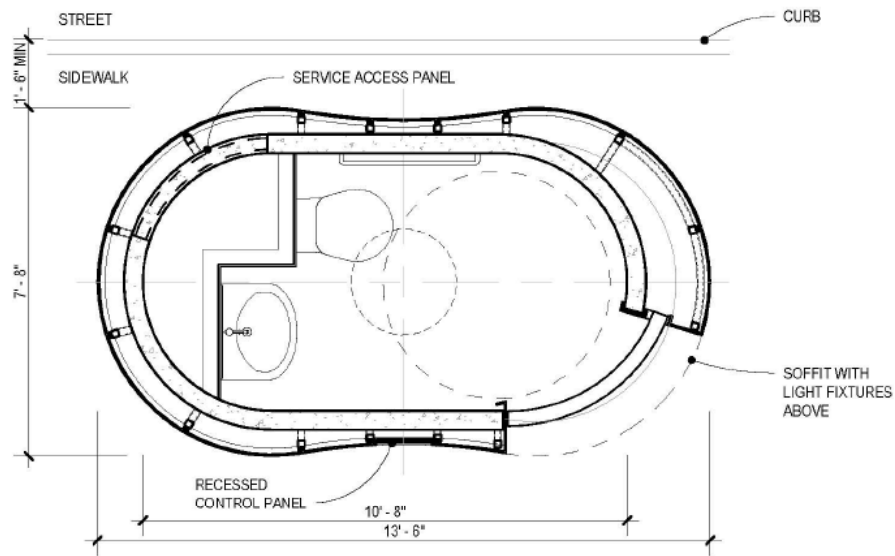


Elevation - Side

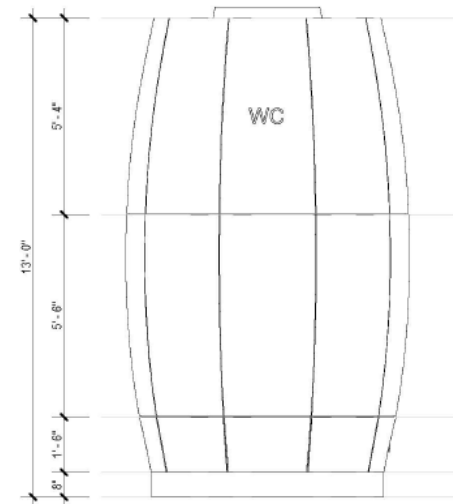
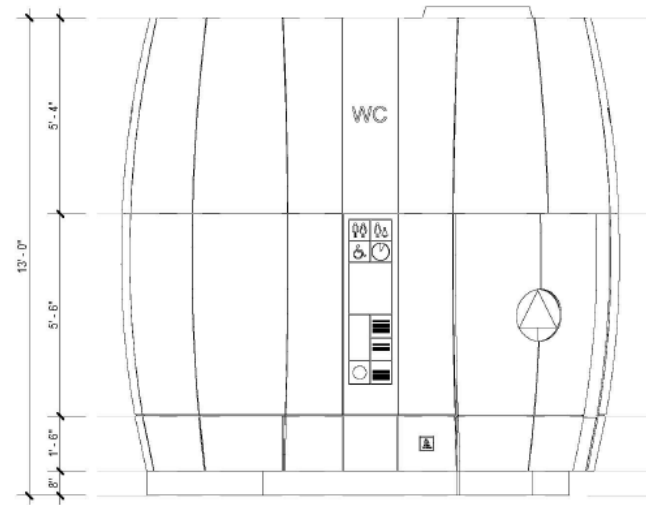
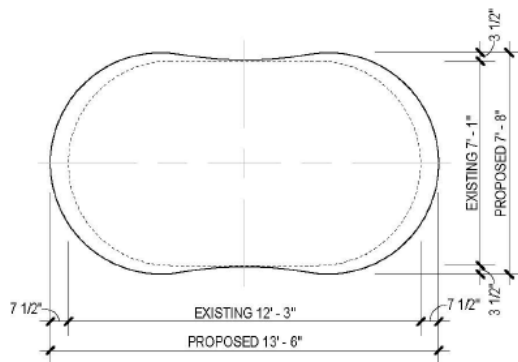


Plan

The proposed designs need to be fully developed and engineered over the next few months to confirm that all codes are met and for structural and constructability requirements



FOOTPRINT OVERLAY EXISTING & PROPOSED - ADA SINGLE TOILET







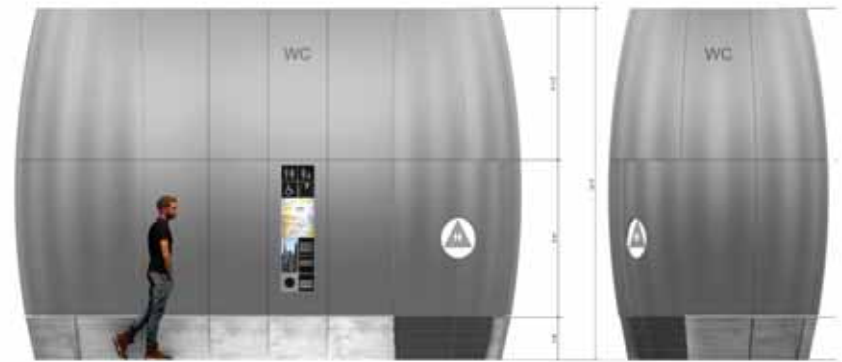
Double Stall



Perspective - From Sidewalk

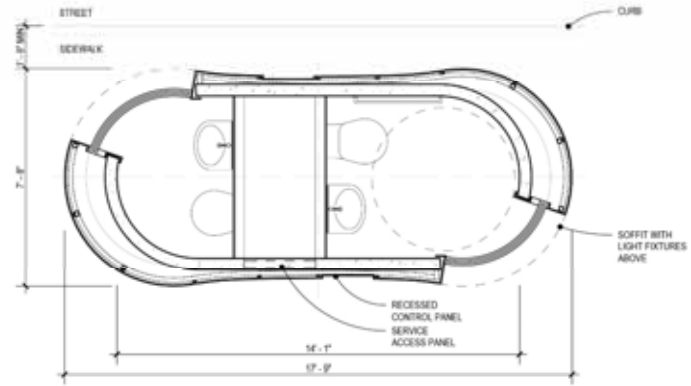
Perspective - From Street

Double Stall



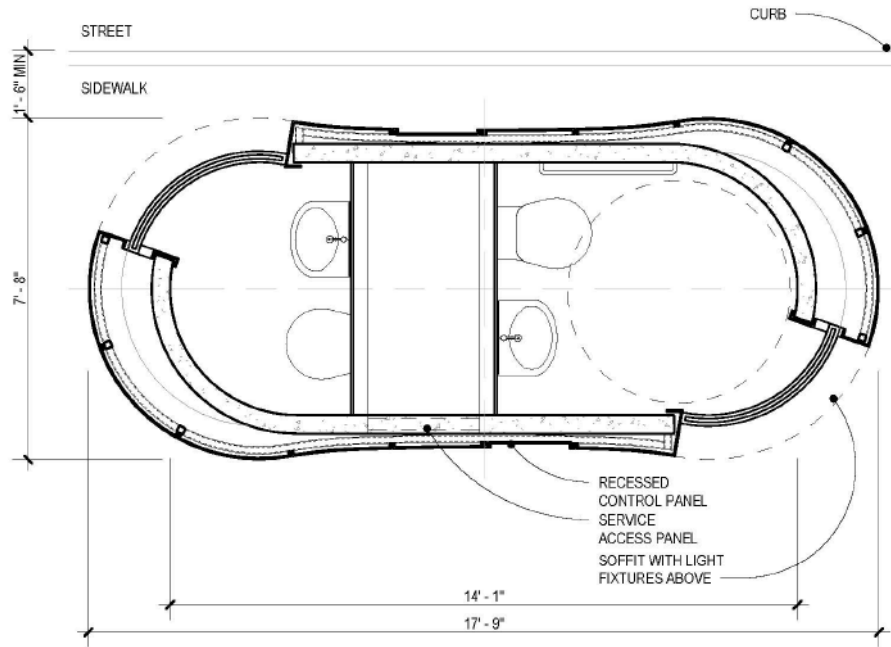
Elevation - From Sidewalk

Elevation - Side

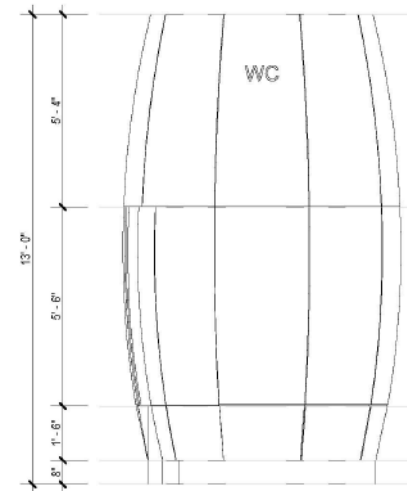
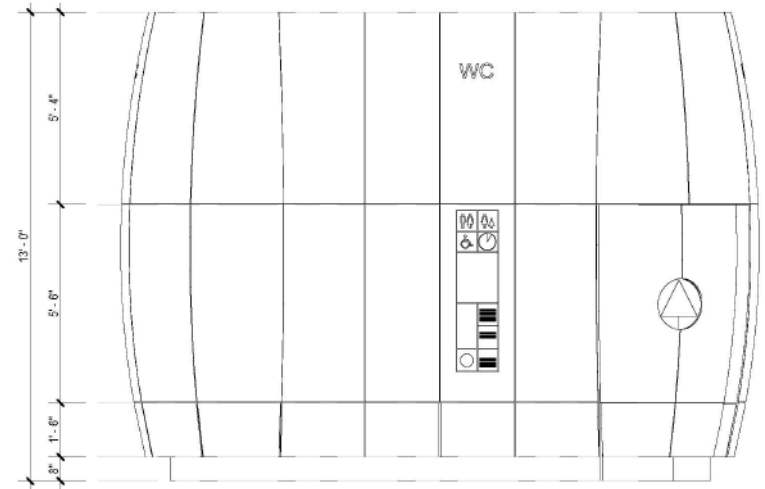
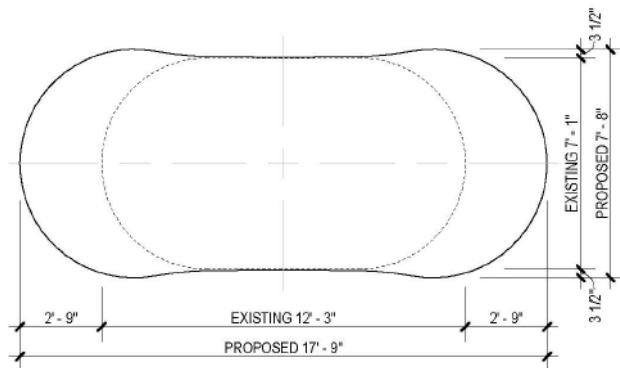


Plan

The proposed designs need to be fully developed and engineered over the next few months to confirm that all codes are met and for structural and constructability requirements



FOOTPRINT OVERLAY EXISTING & PROPOSED - DOUBLE TOILET





WC

metroPS

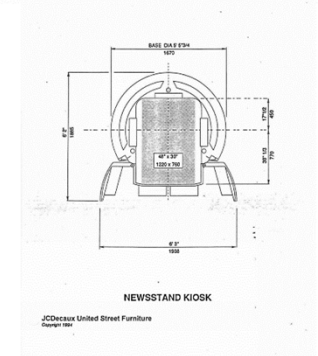
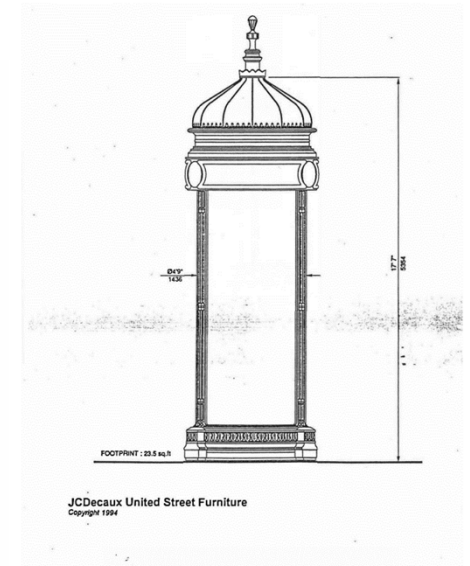
ACT

A.  
C.  
T.





# Kiosks





Small 3-sided panel kiosk



Market St. 3-sided panel kiosk



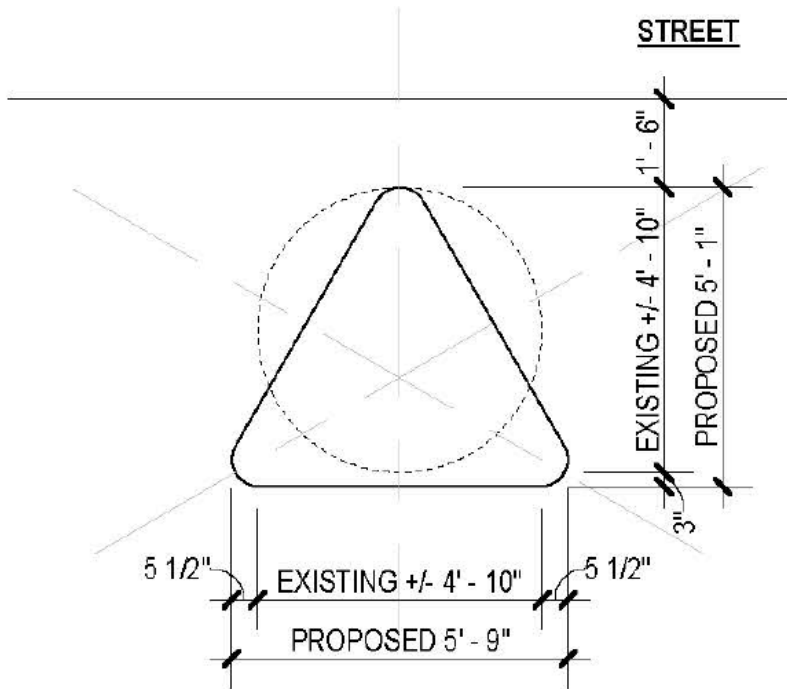
Interactive kiosk



Multi-function / Retail kiosk

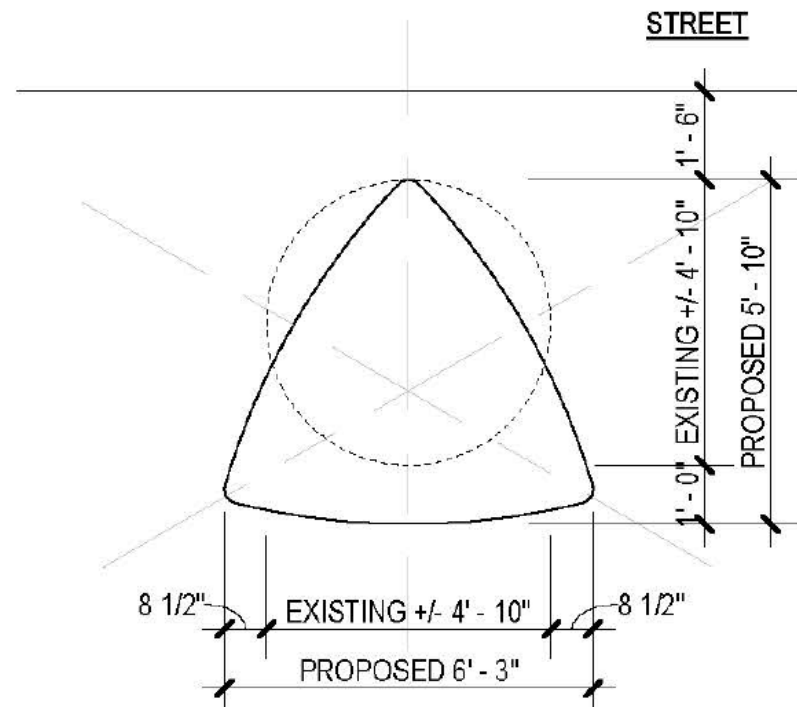


Existing Market St. kiosk



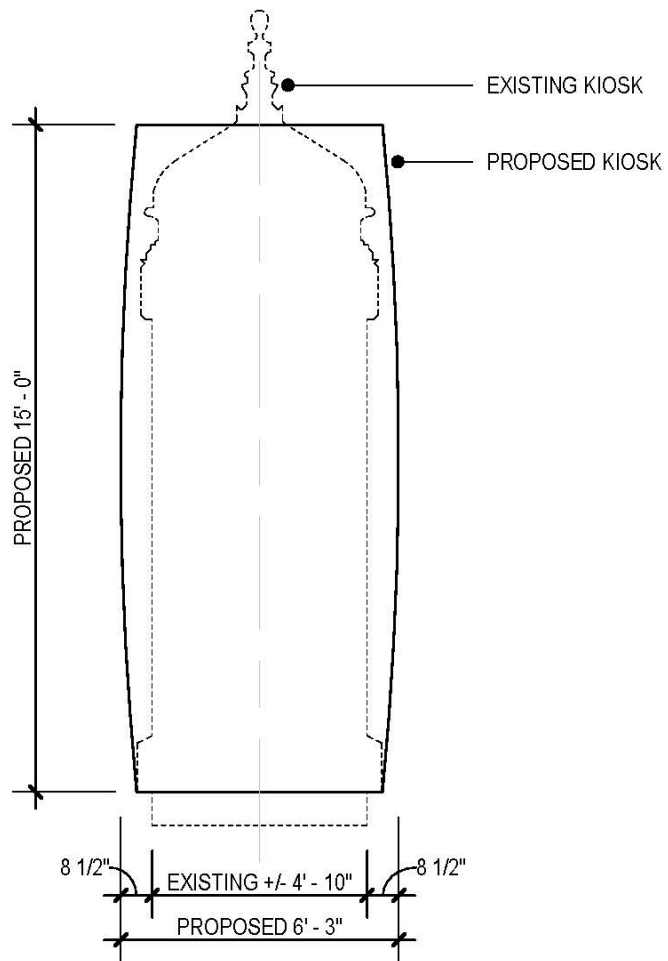
Small 3-sided kiosk requires minimal (3") additional sidewalk encroachment.

Required for narrow sidewalk conditions.

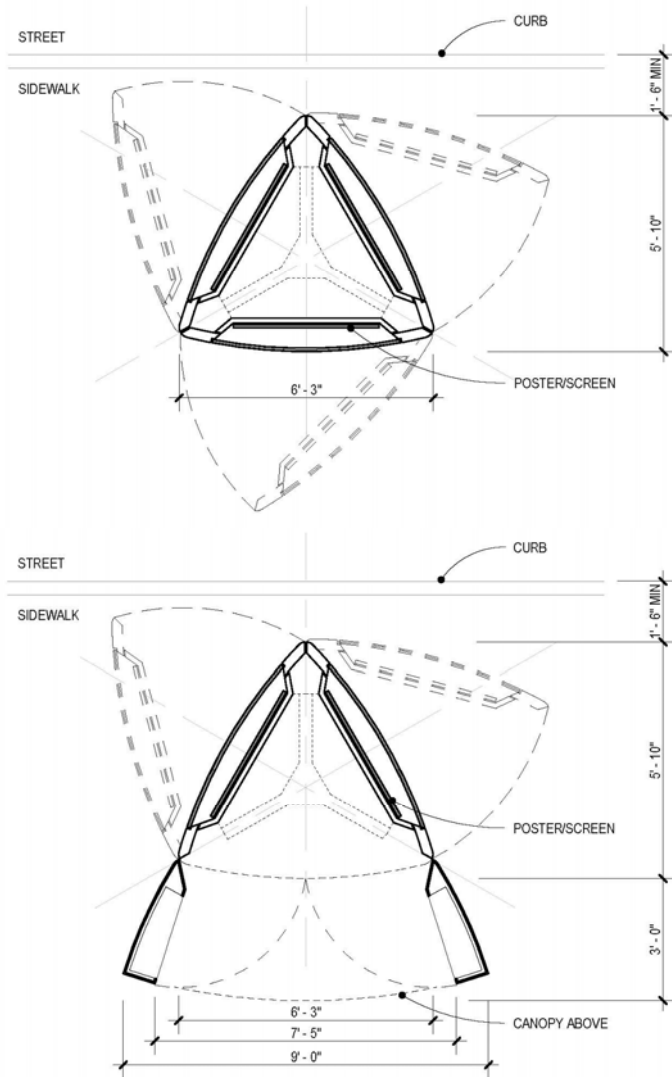


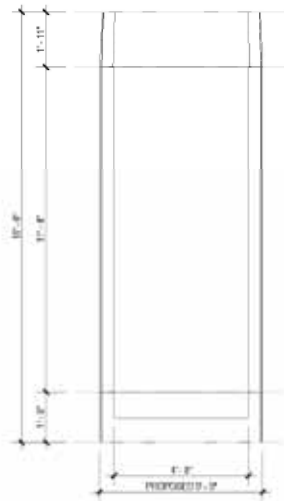
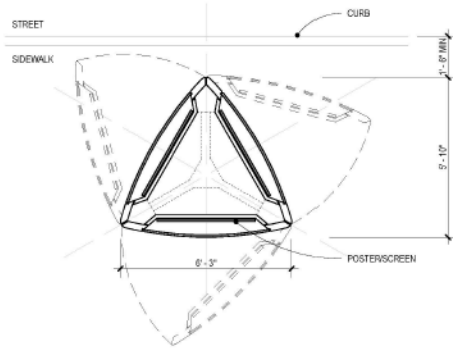
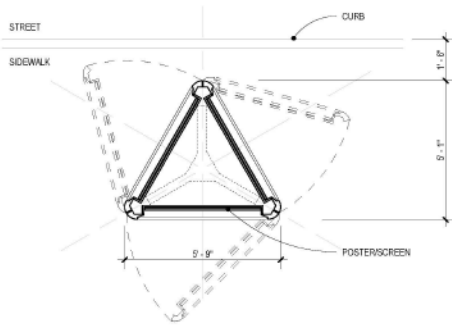
Market St. 3-sided kiosk 'pillows' and 'bows' on all faces. Requires 1'-0" additional sidewalk encroachment.

Feasible on Market St., Embarcadero, Park & Rec locations with no clearance issues.



The proposed designs need to be fully developed and engineered over the next few months to confirm that all codes are met and for structural and constructability requirements





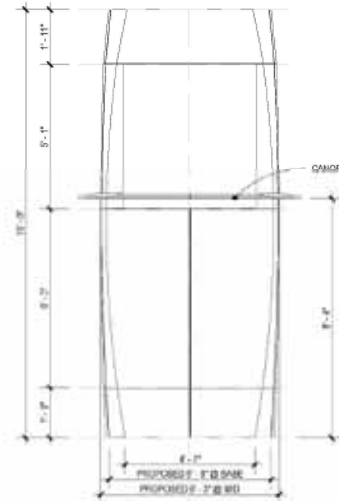
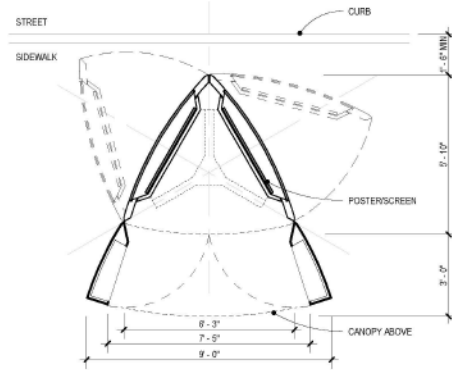
**Small**



**Market Street**

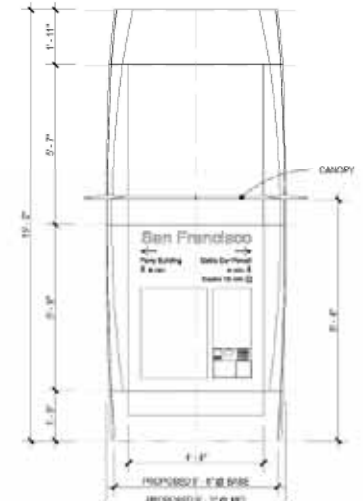
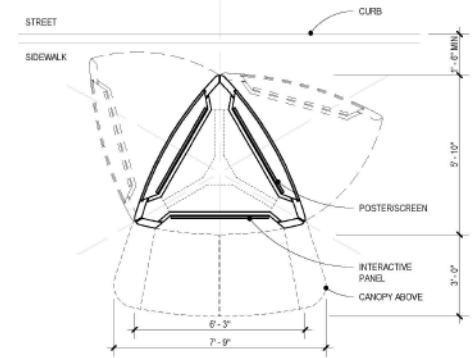
**3 Sided Panel Kiosk**

The City panel is a full length poster space for a public service announcement including the Market Street Art Commission poster program.



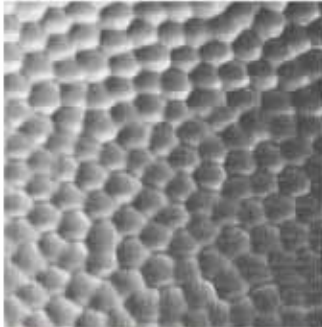
**Multi-Function / Retail Kiosk**

The service side is a vending area. The service side is divided in 2 sections. Lower section has 2 French doors that swing open underneath an awning. The upper section above the awning is a space reserved for a public service announcements poster or digital clock.



**Interactive / Info Kiosk**

The service side has 2 sections. The lower section underneath a small awning has information/ map and an interactive digital screen. The upper section above the awning is reserved for a public service announcement poster.

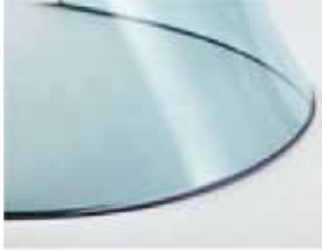


Textured  
Stainless  
Steel and  
matching  
fiberglass cap

option 1



option 2  
Perforated  
Stainless  
Steel (at  
ventilated  
base)



Glazing

### Design Approach

#### **Simplicity in its Kit of Parts**

The furnishings are designed as a kit of parts for ease in buildability and maintenance. The kiosk's unique sculptural shape displays a sense of complexity, yet, the kit of parts assembly is simple. The exterior shell consists of glazed poster/display space and formed texture Stainless Steel panels for the walls and door. Cap is made of matching fiberglass hiding antennas behind.

#### **Maintainability**

State of the Art engineering to deliver ruggedized furniture for everyday useage. They are designed to keep the challenges of structures in an urban context. This includes climate, graffiti, and pedestrian activity.









# SAN FRANCISCO'S Amenities



**SMITHGROUP**

**JCDecaux**

