

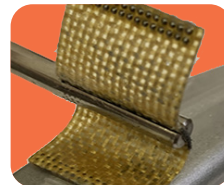
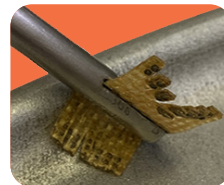
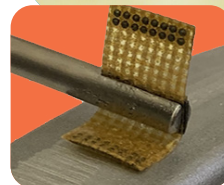
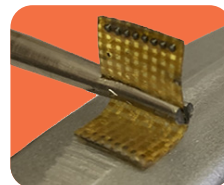


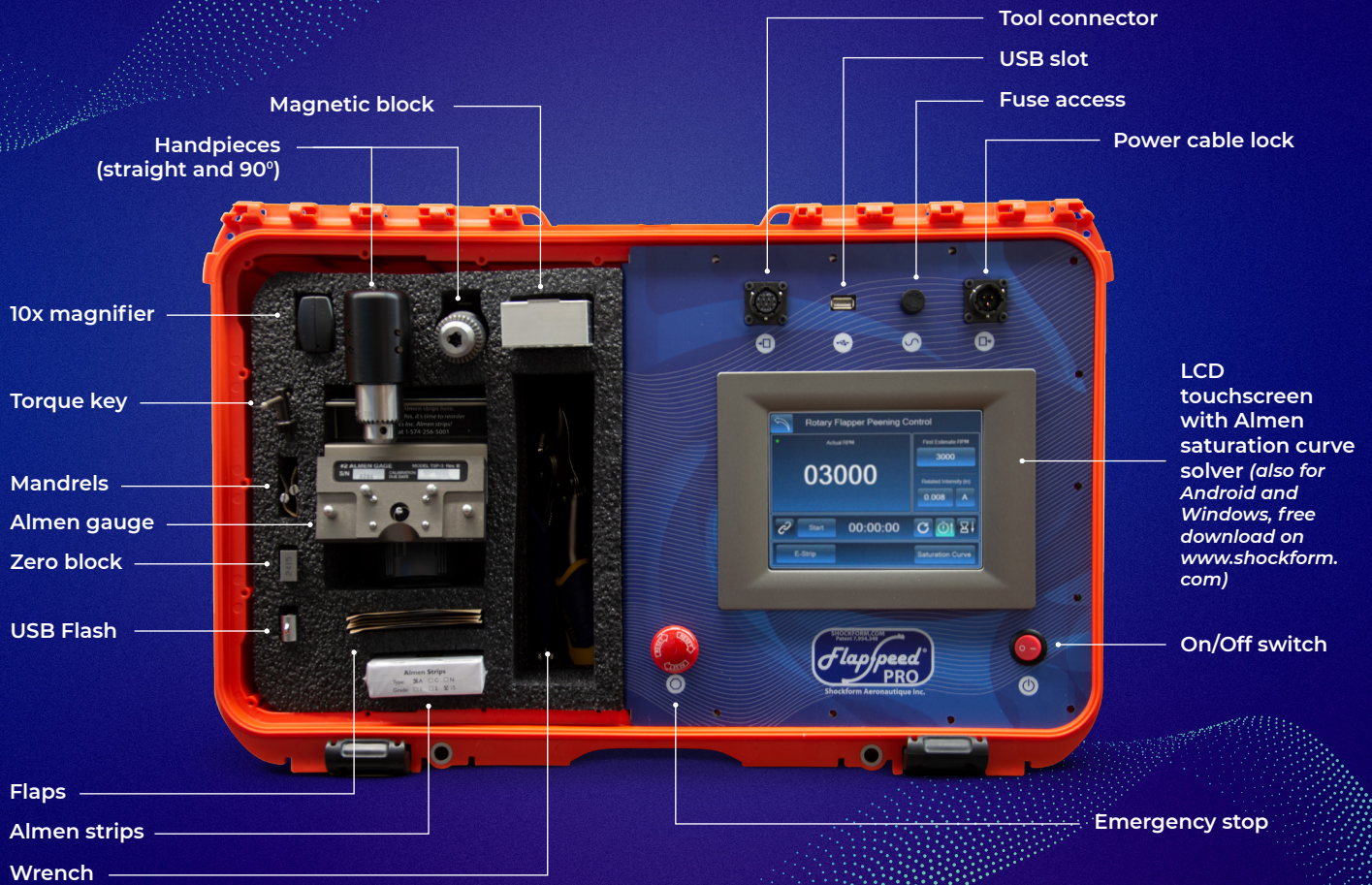
THE FLAPSPEED® PRO

The Flapspeed® Pro is the only controlled flapper peening tool with an integrated saturation curve solver.

ADVANTAGES

- Meets Boeing spec. BAC5730-2, Airbus SRM
- Process data saved to USB Key
- Saves substantial set-up time
- User-friendly color interface
- Easy to print report
- 25 ft cable
- Eliminate problems due to varying shop floor conditions
- Meets all industry and company specifications
- Improves process traceability and visibility
- Ensure reliable and repeatable peening
- Optimal speed maintained at all time
- Intensity range 12N-15N / 4A-16A





SPECIFICATIONS

- Central unit dimensions — L22.0 x W14.0 x H9.0 in (L559 x W356 x H229 mm)
- Weight — 21 lbs (9.5 Kg) empty, 27 lbs (12.3 Kg) fully loaded
- Protection — Weather proof impact resistant NK-7 Resin Exterior
- Control signal — Proprietary closed loop feedback
- Repeatability — +/- 50 RPM
- RPM monitoring — Continuous with alarm
- Solver — Integrated saturation curve solver for Almen intensity
- User input curves — Intensity vs. RPM
- Data recording — Through 2GB USB Flash
- Calibration setup — Yes
- Display — 5.7 inch 320 x 240 color touchscreen display
- Motor type — Brushless
- Handpiece cord length — 25 Ft (7.7 m)
- Electrical input — 100 - 240V, 50/60 Hz, 3.1 A
- Certification — CE



90° HANDPIECE



STRAIGHT HANDPIECE

