

Dutchman Peak Botanical Area

Leaders: Barbara Mumblo and co-leader Shelley Tanquary. Barbara is a long-time Forest Service Botanist in the Applegate area on the Rogue River-Siskiyou National (Siskiyou Mtns Ranger District) and Shelley has been a Siskiyou Chapter NPSO member for 30 years.

Difficulty: Stops along the road with short, easy hikes.

Description of Trip: They will lead a trip to the Dutchman Peak Botanical Area and time allowing, also to the nearby Observation Peak Botanical Area. Both botanical areas have long been destination points for botanists visiting the area. The areas are at high elevations (from 5,700' to 7,400') along the east-west running Siskiyou Crest and include a large variety of plant species. Once at Dutchman, the trip will be stops along the road and short easy hikes from the car to view the botanical diversity.

Floristic Highlights: Some species more common in eastern Oregon, such as *Artemisa arbuscula* and *Cercocarpus ledifolius*, can be found at Dutchman Peak, while Observation Peak is a high elevation serpentine plant community. Rare species we will see include *Horkelia hendersonii*, *Castilleja schizotricha*, *Epilobium siskiyouense*, *Erigeron bloomeri* var. *nudatus*, *Polystichum lemmonii*, and *Erigeron petrophilus*.

General Driving Directions: The trip is approx. 70 miles (2 hours driving) one way-via Hwy 199 to Wilderville, Fish Hatchery Road to Murphy, Hwy 238 to Ruch, Upper Applegate Rd to Star Ranger Station, and then Road 20 to Dutchman Peak.

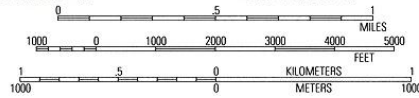
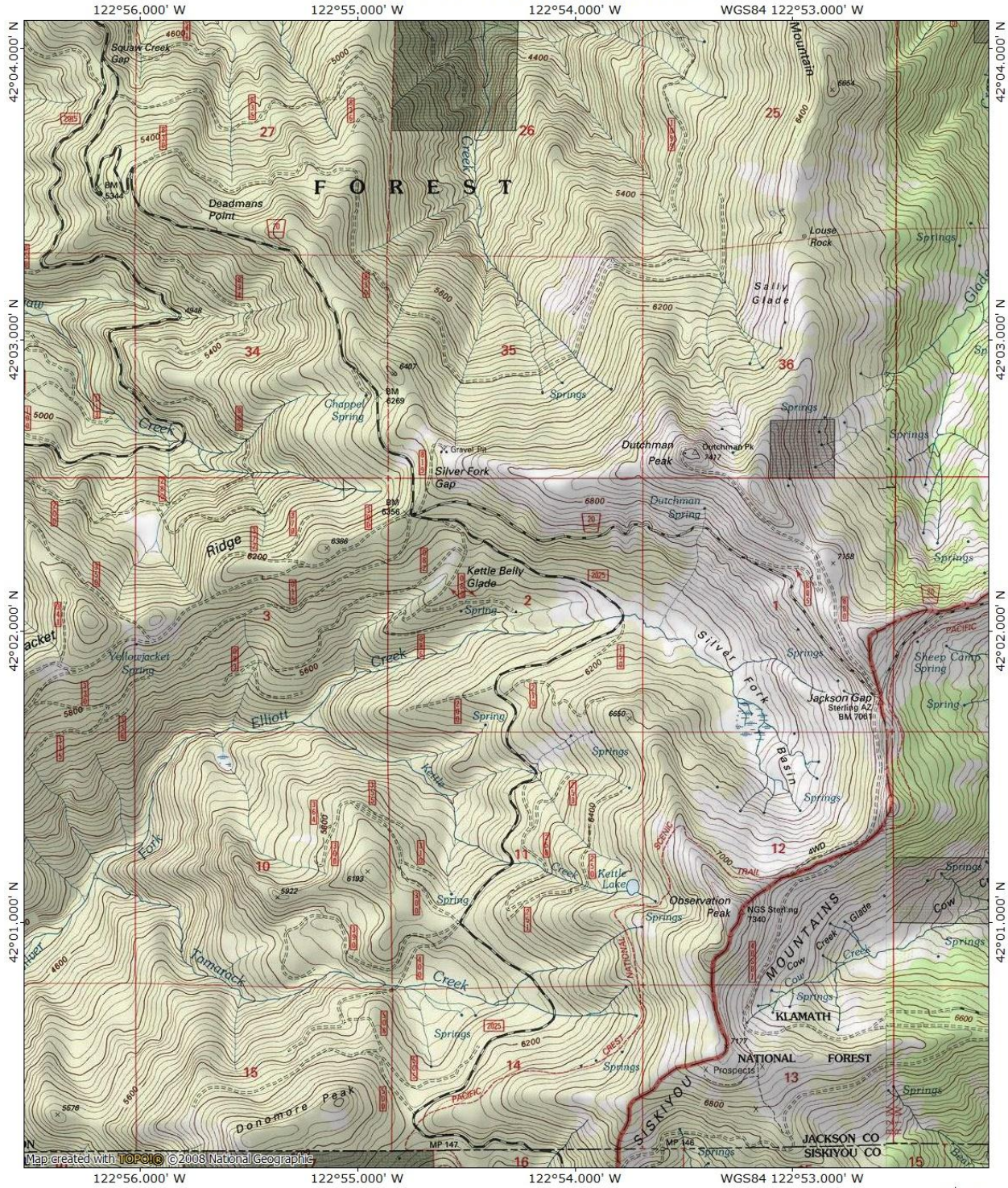
RT Mileage: 140 miles

Start Time: 8 am **Estimated Finish Time:** 5 pm

Group Size Limit: 25 people.

Dutchman and Observation Peaks

TOPO! map printed on 03/06/12 from "Untitled.tpo"



TN MN
15½°
03/06/12

Dutchman Peak Botanical Area Plant List *

| Scientific name | Common name | Family |
|---|------------------------------|------------------|
| <i>Abies concolor</i> | White Fir | Pinaceae |
| <i>Abies magnifica</i> var. <i>shastensis</i> | Shasta Red Fir | Pinaceae |
| <i>Acer glabrum</i> | Douglas Maple | Aceraceae |
| <i>Achillea millifolium</i> | Yarrow | Asteraceae |
| <i>Aconitum columbianum</i> | Monk's hood | Ranunculaceae |
| <i>Actaea rubra</i> | Baneberry | Ranunculaceae |
| <i>Agastache urticifolia</i> | Nettle-leaf Giant Hyssop | Lamiaceae |
| <i>Agoseris glauca</i> var. <i>laciniata</i> | | Asteraceae |
| <i>Agoseris grandiflora</i> | Large-flowered Agoseris | Asteraceae |
| <i>Allium validum</i> | Pacific Onion | Liliaceae |
| <i>Amelanchier alnifolia</i> var. <i>semiintegrifolia</i> | Serviceberry | Rosaceae |
| <i>Anemone deltoidea</i> | Columbia Windflower | Ranunculaceae |
| <i>Anemone drummondii</i> | Drummond's Anemone | Ranunculaceae |
| <i>Anemone occidentalis</i> | Mop on a Stick | Ranunculaceae |
| <i>Anemone oregana</i> | Oregon Anemone | Ranunculaceae |
| <i>Angelica arguta</i> | Angelica | Apiaceae |
| <i>Antennaria rosea</i> | Rosy Pussytoes | Asteraceae |
| <i>Apocynum androsaemifolium</i> | Spreading Dogbane | Apocynaceae |
| <i>Aquilegia formosa</i> | Western Columbine | Ranunculaceae |
| <i>Arabis glabra</i> var. <i>glabra</i> | Tower Rockcress | Brassicaceae |
| <i>Arabis holboellii</i> var. <i>retrofracta</i> | Holboell's Rockcress | Brassicaceae |
| <i>Arabis lyallii</i> var. <i>nubigena</i> | Lyall's Rockcress | Brassicaceae |
| <i>Arctostaphylos nevadensis</i> | Pinemat Manzanita | Ericaceae |
| <i>Arenaria congesta</i> var. <i>congesta</i> | Ball-head Sandwort | Caryophyllaceae |
| <i>Arnica latifolia</i> | Mountain Arnica | Asteraceae |
| <i>Arnica nevadensis</i> | Nevada Arnica | Asteraceae |
| <i>Artemisia arbuscula</i> ssp. <i>arbuscula</i> | Low Sagebrush | Asteraceae |
| <i>Artemisa douglasiana</i> | Mugwort | Asteraceae |
| <i>Aspidotis densa</i> | Indian's Dream | Pteridaceae |
| <i>Aster foliaceus</i> var. <i>lyallii</i> | Leafy Aster | Asteraceae |
| <i>Aster integrifolius</i> | | Asteraceae |
| <i>Balsamorhiza deltoidea</i> | Arrow-leaf Balsamroot | Asteraceae |
| <i>Barbarea orthoceras</i> | American Wintercress | Brassicaceae |
| <i>Calocedrus decurrens</i> | Incense Cedar | Cupressaceae |
| <i>Calochortus tolmiei</i> | Cats Ear | Liliaceae |
| <i>Caltha leptosepala</i> var. <i>biflora</i> | Marsh Marigold | Ranunculaceae |
| <i>Calyptridium umbellatum</i> | Pussy Paws | Portulacaceae |
| <i>Cardamine breweri</i> var. <i>breweri</i> | | Brassicaceae |
| <i>Cardamine nuttallii</i> var. <i>nuttallii</i> | Slender Toothwort | Brassicaceae |
| <i>Castilleja applegatei</i> | Applegate Indian Paintbrush | Scrophulariaceae |
| <i>Castilleja miniata</i> ssp. <i>miniata</i> | Giant Red Indian Paintbrush | Scrophulariaceae |
| <i>Castilleja pruinosa</i> | Frosted Indian Paintbrush | Scrophulariaceae |
| <i>Castilleja schizotricha</i> | Split-hair Indian Paintbrush | Scrophulariaceae |
| <i>Ceanothus velutinus</i> var. <i>velutinus</i> | Snowbrush | Rhamnaceae |
| <i>Cerastium arvense</i> | Field Chickweed | Caryophyllaceae |

| | | |
|--|-----------------------------|------------------|
| <i>Cercocarpus ledifolius</i> var. <i>intermontanus</i> | Curl-leaf Mountain Mahogany | Rosaceae |
| <i>Chaenactis douglasii</i> var. <i>douglasii</i> | Dusty Maidens | Asteraceae |
| <i>Cheilanthes gracillima</i> | Lace Fern | Pteridaceae |
| <i>Chrysolepis chrysophylla</i> var. <i>minor</i> | Golden Chinquapin | Fagaceae |
| <i>Chrysothamnus nauseosus</i> | Rubber Rabbitbrush | Asteraceae |
| <i>Cirsium vulgare</i> | Bull Thistle | Asteraceae |
| <i>Claytonia cordifolia</i> | Heart-leaf Spring Beauty | Portulacaceae |
| <i>Claytonia lanceolata</i> | Spring Beauty | Portulacaceae |
| <i>Claytonia rubra</i> | Red-stem Spring Beauty | Portulacaceae |
| <i>Claytonia sibirica</i> | Candy Flower | Portulacaceae |
| <i>Collinsia parviflora</i> | Blue-eyed Mary | Scrophulariaceae |
| <i>Collinsia torreyi</i> var. <i>torreyi</i> | Torrey's Blue-eyed Mary | Scrophulariaceae |
| <i>Collomia grandiflora</i> | Large-flowered Collomia | Polemoniaceae |
| <i>Collomia tinctoria</i> | Staining Collomia | Polemoniaceae |
| <i>Corallorhiza maculata</i> | Spotted Coralroot | Orchidaceae |
| <i>Crepis occidentalis</i> | Western Hawksbeard | Asteraceae |
| <i>Crepis pleurocarpa</i> | Narrow-stem Hawksbeard | Asteraceae |
| <i>Cryptantha torreyana</i> | | Boraginaceae |
| <i>Cryptogramma acrostichoides</i> | American Parsley Fern | Pteridaceae |
| <i>Delphinium decorum</i> ssp. <i>tracyi</i> | Tracy's Larkspur | Ranunculaceae |
| <i>Delphinium glaucum</i> | Mountain Larkspur | Ranunculaceae |
| <i>Delphinium nuttallianum</i> | Meadow Larkspur | Ranunculaceae |
| <i>Descurainia incisa</i> ssp. <i>incisa</i> | Mountain Tansy Mustard | Brassicaceae |
| <i>Elymus elymoides</i> | Squirreltail | Poaceae |
| <i>Elymus glaucus</i> | Blue Wild Rye | Poaceae |
| <i>Epilobium angustifolium</i> ssp. <i>circumvagum</i> | Fireweed | Onagraceae |
| <i>Epilobium brachycarpum</i> | Tall Annual Willow Herb | Onagraceae |
| <i>Epilobium hornemanii</i> ssp. <i>hornemanii</i> | Hornemann's Willow Herb | Onagraceae |
| <i>Ericameria discoidea</i> | Goldenbush | Asteraceae |
| <i>Ericameria greenei</i> | Green's Goldenbush | Asteraceae |
| <i>Erigeron bloomeri</i> var. <i>bloomeri</i> | Scabland Fleabane | Asteraceae |
| <i>Erigeron compositus</i> | Cut-leaf Daisy | Asteraceae |
| <i>Erigeron peregrinus</i> var. <i>callianthemus</i> | Sub-alpine Fleabane | Asteraceae |
| <i>Eriogonum compositum</i> | | Polygalaceae |
| <i>Eriogonum diclinum</i> | Jayne's Canyon Buckwheat | Polygalaceae |
| <i>Eriogonum douglasii</i> var. <i>douglasii</i> | Douglas's Knotweed | Polygalaceae |
| <i>Eriogonum elatum</i> var. <i>elatum</i> | | Polygalaceae |
| <i>Eriogonum nudum</i> var. <i>nudum</i> | Naked Buckwheat | Polygalaceae |
| <i>Eriogonum ovalifolium</i> var. <i>ovalifolium</i> | | Polygalaceae |
| <i>Eriogonum umbellatum</i> | Sulfur Buckwheat | Polygalaceae |
| <i>Eriophyllum lanatum</i> var. <i>lanceolatum</i> | Oregon Sunshine | Asteraceae |
| <i>Erysimum capitatum</i> ssp. <i>capitatum</i> | Western Wallflower | Brassicaceae |
| <i>Erythronium grandiflorum</i> | Glacier Lily | Lilaceae |
| <i>Festuca roemerii</i> | Roemer's Fescue | Poaceae |
| <i>Festuca viridula</i> | Green Fescue | Poaceae |
| <i>Galium aparine</i> | Catchweed Bedstraw | Rubiaceae |
| <i>Gayophytum diffusum</i> ssp. <i>diffusum</i> | Spreading Ground Smoke | Onagraceae |
| <i>Geum macrophyllum</i> | Big-leaf Avens | Rosaceae |
| <i>Geum trifolium</i> | Prairie smoke | Rosaceae |

| | | |
|--|---|------------------|
| <i>Gilia capillaris</i> | Smooth-leaf Gilia | Polemoniaceae |
| <i>Gnaphalium canescens</i> ssp. <i>thermale</i> | Wright's Cudweed | Asteraceae |
| <i>Goodyera oblongifolia</i> | Rattlesnake Plantain, Rattlesnake Orchid | Orchidaceae |
| <i>Grindelia nana</i> | Idaho Gumweed | Asteraceae |
| <i>Hackelia micrantha</i> | Jessica Stickseed | Boraginaceae |
| <i>Hastingsia alba</i> | White-flowered Rush Lily | Liliaceae |
| <i>Hazardia whitneyi</i> var. <i>discoidea</i> | Whitney's Haplopappus | Asteraceae |
| <i>Helenium bigelovii</i> | Sneezeweed | Asteraceae |
| <i>Heracleum lanatum</i> | Cow Parsnip | Apiaceae |
| <i>Heuchera cylindrica</i> var. <i>alpina</i> | Alum Root | Saxifragaceae |
| <i>Hieracium albiflorum</i> | White Hawkweed | Asteraceae |
| <i>Hieracium horridum</i> | | Asteraceae |
| <i>Holodiscus discolor</i> | Ocean Spray | Rosaceae |
| <i>Holodiscus microphyllus</i> var. <i>microphyllus</i> | Shrubby Ocean Spray | Rosaceae |
| <i>Horkelia hendersonii</i> | Henderson's Horkelia | Rosaceae |
| <i>Hydrophyllum capitatum</i> var. <i>alpinum</i> | ball-head Water-leaf | Hydrophyllaceae |
| <i>Hydrophyllum fendleri</i> var. <i>albifrons</i> | White Water-leaf | Hydrophyllaceae |
| <i>Hypericum anagalloides</i> | Tinker's Penny | Hypericaceae |
| <i>Hypericum formosum</i> var. <i>scouleri</i> | Scouler's St. John's Wort | Hypericaceae |
| <i>Hypericum perforatum</i> | Klamath Weed, St. John's Wort | Hypericaceae |
| <i>Ipomopsis aggregata</i> | Scarlet Gilia, Sky Rocket | Polemoniaceae |
| <i>Juniperus communis</i> | Common Juniper | Cupressaceae |
| <i>Kelloggia galioides</i> | Milk kelloggia | Rubiaceae |
| <i>Lathyrus nevadensis</i> var. <i>nevadensis</i> | Nevada Pea | Fabaceae |
| <i>Laythrus polyphyllus</i> | Wild Sweet Pea | Fabaceae |
| <i>Leutkea pectinata</i> | | Rosaceae |
| <i>Ligusticum grayi</i> | | Apiaceae |
| <i>Lilium pardalinum</i> ssp. <i>wigginsii</i> | Wiggin's Lily | Liliaceae |
| <i>Lilium washingtonianum</i> ssp. <i>purpurascens</i> | Purple-flowered Shasta Lily | Liliaceae |
| <i>Linanthus harknessii</i> | Harkness Linanthus | Polemoniaceae |
| <i>Linum lewisii</i> var. <i>lewisii</i> | Flax | Linaceae |
| <i>Lithophragma parviflorum</i> var. <i>parviflorum</i> | Small-flowered Woodland Star | Saxifragaceae |
| <i>Lomatium macrocarpum</i> | Giant-seeded Lomatium | Apiaceae |
| <i>Lomatium nudicaule</i> | Pestle Lomatium | Apiaceae |
| <i>Lonicera conjugialis</i> | Wedded Honeysuckle | Caprifoliaceae |
| <i>Lupinus latifolius</i> var. <i>columbianus</i> | Broadleaf Lupine | Fabaceae |
| <i>Lupinus leucophyllus</i> | White-leaf Lupine | Fabaceae |
| <i>Lupinus polyphyllus</i> | Big-leaf Lupine | Fabaceae |
| <i>Luzula comosa</i> | Wood Rush | Juncaceae |
| <i>Machaeranthera canescens</i> var. <i>shastensis</i> | Shasta Tansy Aster | Asteraceae |
| <i>Madia bolanderi</i> | Bolander's Tarweed | Asteraceae |
| <i>Madia gracilis</i> | Slender Tarweed | Asteraceae |
| <i>Mimulus breweri</i> | Brewer's Monkeyflower | Scrophulariaceae |
| <i>Mimulus guttatus</i> | Yellow Monkeyflower | Scrophulariaceae |
| <i>Mimulus moschatus</i> | Musk Monkeyflower | Scrophulariaceae |
| <i>Minuartia nuttallii</i> | Nuttall's Sandwort | Caryophyllaceae |

| | | |
|--|---------------------------------------|------------------|
| <i>Mitella pentandra</i> | Five Point Bishop's Cap | Saxifragaceae |
| <i>Mitella trifida</i> | Three-tooth Mitrewort | Saxifragaceae |
| <i>Moehringia macrophylla</i> | Large-leaf Sandwort | Caryophyllaceae |
| <i>Mondardella odoatissima</i> ssp. <i>odoratissima</i> | Coyote Mint | Lamiaceae |
| <i>Montia linearis</i> | Narrow-leaf Montia | Portulacaceae |
| <i>Nemophila parviflora</i> var. <i>austinae</i> | Small Flower Nemophila | Hydrophyllaceae |
| <i>Nothochelone nemorosa</i> | Woodland Penstemon | Scrophulariaceae |
| <i>Orthocarpus cuspidatus</i> ssp. <i>cuspidatus</i> | Siskiyou Mountain Owl Clover | Scrophulariaceae |
| <i>Orthilia secunda</i> | One-sided Wintergreen | Ericaceae |
| <i>Osmorhiza chilensis</i> | Western Sweet Cicely | Apiaceae |
| <i>Parnassia californica</i> | California Grass of Parnassus | Saxifragaceae |
| <i>Parnassia fimbriata</i> | Fringed Grass of Parnassus | Saxifragaceae |
| <i>Pedicularis racemosa</i> | Leafy Loosewort | Scrophulariaceae |
| <i>Penstemon anguineus</i> | Siskiyou Penstemon | Scrophulariaceae |
| <i>Penstemon davidsonii</i> var. <i>davidsonii</i> | Davidson's Penstemon | Scrophulariaceae |
| <i>Penstemon parvulus</i> | Azure Pestemon (prob azur X parvu) | Scrophulariaceae |
| <i>Periderida gairdneri</i> ssp. <i>borealis</i> | Yampah | Apiaceae |
| <i>Phacelia hastata</i> | Silver-leaf Phacelia | Hydrophyllaceae |
| <i>Phacelia procera</i> | Tall Phacelia | Hydrophyllaceae |
| <i>Phleum alpinum</i> | Mountain Timothy | Poaceae |
| <i>Phlox diffusa</i> | Spreading Phlox | Polemoniaceae |
| <i>Phlox gracilis</i> | Slender Phlox | Polemoniaceae |
| <i>Pinus monticola</i> | Western White Pine | Pinaceae |
| <i>Platanthera leucostachys</i> | White-flowered Bog Orchid | Orchidaceae |
| <i>Polemonium pulcherrimum</i> var. <i>pulcherimum</i> | Jacob's ladder | Polemoniaceae |
| <i>Polygonum arenastrum</i> | | Polygalaceae |
| <i>Polygonum bistortoides</i> | Western Bistort | Polygalaceae |
| <i>Polygonum davisae</i> | Davis' Knotweed | Polygalaceae |
| <i>Polygonum douglasii</i> ssp. <i>douglasii</i> | | Polygalaceae |
| <i>Polystichum munitum</i> | Sword Fern | Dryopteridaceae |
| <i>Potentilla fruticosa</i> | Shrubby Cinquefoil | Rosaceae |
| <i>Potentilla glandulosa</i> ssp. <i>ashlandica</i> | Sticky Cinquefoil | Rosaceae |
| <i>Potentilla gracilis</i> var. <i>fastigiata</i> | Northwest Cinquefoil | Rosaceae |
| <i>Prunella vulgaris</i> var. <i>lanceolata</i> | Self-heal | Lamiaceae |
| <i>Prunus emarginata</i> | Bitter Cherry | Rosaceae |
| <i>Prunus virginiana</i> var. <i>demissa</i> | Western Chokecherry | Rosaceae |
| <i>Pseudostellaria jamesiana</i> | | Caryophyllaceae |
| <i>Pseudotsuga menziesii</i> | Douglas-fir | Pinaceae |
| <i>Pyrola picta</i> | White-veined Wintergreen | Ericaceae |
| <i>Quercus garryana</i> var. <i>breweri</i> | Brewer's Oak | Fagaceae |
| <i>Raillardella argentea</i> | Silky Raillardella | Asteraceae |
| <i>Ribes binominatum</i> | Siskiyou Gooseberry | Grossulariaceae |
| <i>Ribes cereum</i> var. <i>cereum</i> | Wax Currant | Grossulariaceae |
| <i>Ribes lacustre</i> | Swamp Gooseberry | Grossulariaceae |
| <i>Ribes lobbii</i> | Gummy Gooseberry | Grossulariaceae |
| <i>Ribes viscosissimum</i> | Sticky Currant | Grossulariaceae |
| <i>Rubus leucodermis</i> | Black cap Raspberry | Rosaceae |

| | | |
|--|---|------------------|
| <i>Rubus parviflorus</i> | Thimbleberry | Rosaceae |
| <i>Rudbeckia occidentalis</i> var. <i>occidentalis</i> | Western Coneflower | Asteraceae |
| <i>Rumex acetesella</i> | Sheep Sorrel | Polygonaceae |
| <i>Rumex crispus</i> | Curly Dock | Polygonaceae |
| <i>Rumex salicifolius</i> var. <i>salicifolius</i> | Willow Dock | Polygonaceae |
| <i>Salix eastwoodiae</i> | Sierra Willow | Salicaceae |
| <i>Sambucus mexicana</i> | Blue Elderberry | Caprifoliaceae |
| <i>Saussurea americana</i> | American Sawwort | Asteraceae |
| <i>Saxifraga aprica</i> | | Saxifragaceae |
| <i>Saxifraga odontoloma</i> | Brook Saxifrage | Saxifragaceae |
| <i>Sedum lanceolatum</i> | Lance-leaf Sedum | Crassulaceae |
| <i>Sedum obtusatum</i> ssp. <i>retusum</i> | Obtuse Sedum | Crassulaceae |
| <i>Selaginella wallacei</i> | Spike-Moss | Selaginellaceae |
| <i>Senecio intergerrimus</i> var. <i>exaltatus</i> | Western Butterwort | Asteraceae |
| <i>Senecio triangularis</i> | Arrowhead Butterwort | Asteraceae |
| <i>Sidalcea oregana</i> ssp. <i>spicata</i> | Oregon Checkerbloom | Malvaceae |
| <i>Silene bernardina</i> | | Caryophyllaceae |
| <i>Silene campanulata</i> ssp. <i>glandulosa</i> | Glandular Catchfly, Sticky Catchfly | Caryophyllaceae |
| <i>Sisyrinchium idahoense</i> var. <i>occidentale</i> | | Iridaceae |
| <i>Smilacina racemosa</i> | False Solomon's Seal | Liliaceae |
| <i>Smilacina stellata</i> | Star-flowered False Solomon's Seal | Liliaceae |
| <i>Solidago canadensis</i> ssp. <i>elongate</i> | Goldenrod | Asteraceae |
| <i>Spergularia rubra</i> | Red Sand Spurry | Caryophyllaceae |
| <i>Sphenosciadium capitellatum</i> | Swamp Whitehead, Ranger Button's | Apiaceae |
| <i>Stachys ajugoides</i> var. <i>rigida</i> | Rough Hedge Nettle | Lamiaceae |
| <i>Symphoricarpos mollis</i> | Creeping Snowberry | Caprifoliaceae |
| <i>Symphoricarpos rotundifolius</i> var. <i>rotundifolius</i> | | Caprifoliaceae |
| <i>Taraxacum officinale</i> | Dandelion | Asteraceae |
| <i>Thalictrum fendleri</i> var. <i>fendleri</i> | Fendler's Rue | Ranunculaceae |
| <i>Thlaspi montanum</i> var. <i>montanum</i> | Mountain Pennycress | Brassicaceae |
| <i>Tofieldia occidentalis</i> ssp. <i>occidentalis</i> | Western Tofieldia | Liliaceae |
| <i>Tragopogon dubius</i> | Yellow Salsify | Asteraceae |
| <i>Trifolium repens</i> | White Lawn Clover | Fabaceae |
| <i>Trifolium variegatum</i> (Phase 2) | White-topped Clover | Fabaceae |
| <i>Trillium ovatum</i> ssp. <i>ovatum</i> | Western Trillium | Liliaceae |
| <i>Trisetum canescens</i> | Tall Trisetum | Poaceae |
| <i>Tsuga mertensiana</i> | Mountain hemlock | Pinaceae |
| <i>Valeriana sitchensis</i> ssp. <i>sitchensis</i> | Sitka Valerian | Valerianaceae |
| <i>Veratrum californicum</i> var. <i>californicum</i> | California False Hellebore, California Corn Lily | Liliaceae |
| <i>Veratrum viride</i> | Green-flowered Corn Lily | Liliaceae |
| <i>Verbascum thapsus</i> | Woolly Mullein | Scrophulariaceae |
| <i>Verbena lasiostachys</i> var. <i>lasiostachys</i> | Western Verbena | Verbenaceae |
| <i>Veronica americana</i> | American Veronica | Scrophulariaceae |
| <i>Vicia americana</i> var. <i>americana</i> | American Vetch | Fabaceae |
| <i>Viola adunca</i> | Western Dog Violet | Violaceae |
| <i>Viola glabella</i> | Stream Violet | Violaceae |

Viola praemorsa ssp. *linguifolia*
Viola sheltonii
Xerophyllum tenax

Shelton's Violet
Beargrass

Violaceae
Violaceae
Liliaceae

* List compiled from previous lists and recent surveys. Special assistance from lists of the Native Plant Society of Oregon (NPSO), the California Native Plant Society (CNPS), Mary Paetzel, and Kristi Mergenthaler.

As most plant lists are, this list will be further refined and additions made as additional species are observed and identified.