

The PENNSWOODPUSHER

June 2002 A Quarterly Publication of the Pennsylvania State Chess Federation

DONALD BYRNE MEMORIAL

Three IM Norms Earned at Donald Byrne Memorial Penn State IM Tournament

by Jerome Bibuld, International Arbiter

The Donald Byrne Memorial-Penn State IM Tournament was held in the HUB-Robeson Center on the university's campus from 20 through 26 February. A FIDE Cat. IV event. (the average FIDE rating was 2327.4), it was the first international title norm competition ever held at Penn State

Three players [Pennsylvanians Stanislav ("Stas") Kriventsov and Norman ("Pete") Rogers and FM Pascal Charbonneau (CAN)] earned IM title norms. In 30 years of conducting international tournaments, never have I seen three norms achieved in a round robin. I've never even seen two norms earned in a ten-player round robin.

This was a fighting tournament. Black won 58% of the decisive games. Not only that, 58% of the games were decisive. Almost all of the draws -- until the last couple of days, when the rankings and norm determinations had been sorted out -- were hard fought battles as well.

In the end, IM Luis Chiong (PHI, but living in Philadelphia) scored 7-2, to beat out Kriventsov and Rogers (6.5-2.5 each). Chiong won \$500, while \$400 was split between the two players who tied for second and third places. Charbonneau finished fourth, at 6-3. These four scored 26 of the 45 points available in the competition, which did not leave much for the other six players. In fact, the next score was 4-5, by IM Edward Formanek (a mathematics professor at PSU). He was followed by IM Oladapo Adu (NGR) and Mikhail Belorussov (RUS), at 3.5-5.5. FM Stephen Muhammad (Atlanta), at 3-6, came next, while Igor Schneider (upstate New York) and FM Ronald Simpson (State College) brought up the rear, with scores of 2.5-6.5.

I picked the brains of the players in the tournament and, therefore, am able to make the following comments concerning the winner and three norm achievers. While the considered chess judgments are not mine, responsibility for the words is.

IM Luis Chiong seemed to outclass most of his opponents, both strategically and tactically. "Pete" Rogers had a much better tournament than his play seemed to deserve. He won games mostly by exploiting serious errors of his opponents. FM "Stas" Kriventsov had a good tournament. His openings were better than those of most of the other players. He can play well in almost all types of positions, which also makes him more dangerous for lower rated players. Despite his IM norm - and, with it, the title - this probably was not a very good tournament for Charbonneau. He very well may be capable of a better performance.

I cannot conclude without acknowledging the joy this tournament brought me. Before it, I counted six of the players as friends. As a result of this tournament, I have four new friends in the players and one new friend in my Assistant arbiter and fellow organizer, Greg

Vaserstein. I must thank Greg and Stas Kriventsov for their cooperation in the organization of the tournament. Ron Simpson was an amiable host, as were Stas and Greg, while I was a guest at State College.

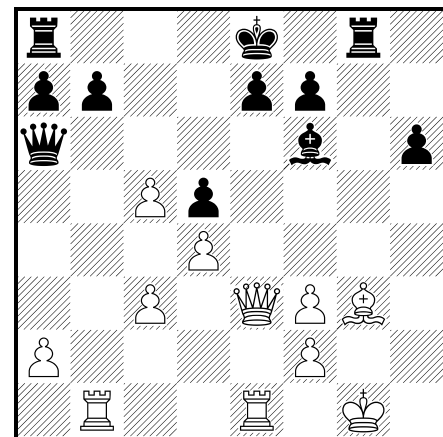
(A full PGN file of the games from the Donald Byrne Memorial can be downloaded from the tournament's official website: www.clubs.psu.edu/chessteam/immtour.html)

Donald Byrne Memorial	State College, PA										
	1	2	3	4	5	6	7	8	9	10	
1 Chiong	*	1	0	½	1	1	1	1	½	1	7.0/9
2 Rogers	0	*	1	1	½	½	½	1	1	1	6.5/9 26.00
3 Kriventsov	1	0	*	½	1	½	½	1	1	1	6.5/9 25.50
4 Charbonneau	½	0	½	*	1	½	1	½	1	1	6.0/9
5 Formanek	0	½	0	0	*	1	½	½	1	½	4.0/9
6 Adu	0	½	½	½	0	*	½	½	½	½	3.5/9 15.25
7 Belorussov	0	½	½	0	½	½	*	1	½	0	3.5/9 14.50
8 Muhammad	0	0	0	½	½	½	0	*	1	½	3.0/9
9 Schneider	½	0	0	0	½	½	0	*	1	2.5/9 9.50	
10 Simpson	0	0	0	0	½	½	1	½	0	*	2.5/9 8.75

Charbonneau - Rogers [B15]

Donald Byrne Memorial State College, PA

1.e4 c6 2.d4 g6 3.Nc3 d5 4.Nf3 Bg7 5.h3 Nf6 6.e5 Ne4 7.Bd3 Nxc3 8.bxc3 c5 9.dxc5 Nc6 10.Bf4 Qa5 11.Qd2 h6 12.0-0 g5 13.Bg3 g4 14.hxg4 Bxg4 15.Rab1 Bxf3 16.gxf3 Nxe5 17.Qe3 Nxd3 18.cxd3 Qa6 19.Rfe1 Bf6 20.d4 Rg8



21.Qxh6 Rxg3+!! 21...Rxg3+ 22.fxg3 Bxd4+ 23.cxd4 Qxh6 0-1

Schneider - Charbonneau [B40]

Donald Byrne Memorial State College, PA

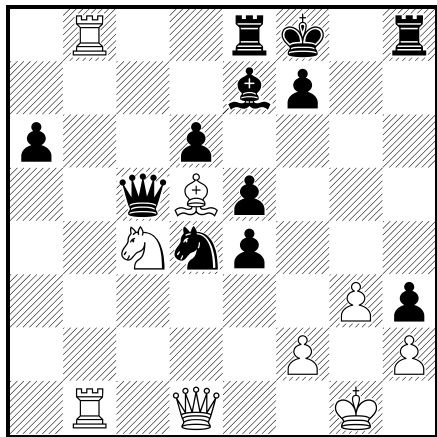
1.e4 c5 2.Nf3 Nc6 3.Nc3 e6 4.g3 Nf6 5.Bg2 a6 6.0-0 Qc7 7.d3 Be7 8.Ng5 h6 9.Nh3 b5 10.f4 b4 11.Ne2 d5 12.e5 Nd7 13.c3 a5 14.d4 Ba6 15.Be3 g6 16.a3 bxc3 17.bxc3 Nb6 18.Kh1 cxd4 19.cxd4 Nc4 20.Bc1 Qb6 21.Nhg1 h5 22.h4 Rb8 23.Rf3 Kd7 24.Nc3 Qb3 25.Qxb3 Rxb3 26.Nge2 Rhb8 27.a4 Nb2 28.Bxb2 Rxb2 29.Bf1 R8b3 30.Nd1 Rxf3 31.Nxb2 Rxf1+ 32.Rxf1 Bxe2 33.Rb1 Nxd4 34.Kg1 Ba6 35.Kf2 Bc5 36.Kg2 Nf5 37.Kf3 d4 38.Rd1 Bb7+

39.Kf2 Be4 40.Rc1 Kc6 41.Nc4 Kd5 42.Nxa5 d3+ 0-1

Schneider - Kriventsov [B43]

Donald Byrne Memorial State College, PA

1.e4 c5 2.Nf3 e6 3.Nc3 a6 4.d4 cxd4 5.Nxd4 b5 6.Bd3 Qb6
7.Nb3 Qc7 8.0-0 Nf6 9.a4 b4 10.Ne2 Bb7 11.Ng3 h5 12.Re1 h4
13.Nf1 h3 14.g3 Be7 15.Bf4 d6 16.c3 bxc3 17.Rc1 e5 18.Bg5
Qd7 19.Bxf6 cxb2 20.Rc3 gxf6 21.Na5 Bc6 22.Nxc6 Nxc6
23.Rb3 Bd8 24.Ne3 Nd4 25.Rxb2 Kf8 26.Rf1 Qc6 27.Bc4 Rc8
28.Bd5 Qc3 29.Rb7 Be7 30.Qg4 Re8 31.Rfb1 Qa3 32.a5 Qxa5
33.Nc4 f5 34.Qd1 Qc5 35.Rb8 fxe4

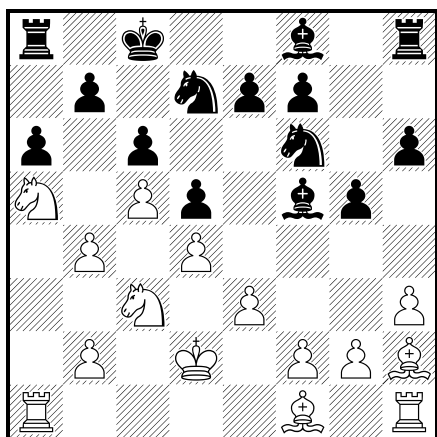


36.Rxe8+ Kxe8 37.Rb8+ Bd8 38.Qa4+ Ke7 39.Rb7+ Bc7
40.Qxa6 Qxd5 41.Rxc7+ Ke6 42.Qa4 Ra8 43.Qd7+ Kf6 0-1

Chiong - Formanek [D11]

Donald Byrne Memorial State College, PA

1.d4 d5 2.Nf3 Nf6 3.c4 c6 4.Qc2 g6 5.Bf4 Bf5 6.Qb3 Qb6 7.c5
Qxb3 8.axb3 Nbd7 9.Nc3 a6 10.b4 Rc8 11.h3 h6 12.Nd2 g5
13.Bh2 Kd8 14.Nb3 Ra8 15.e3 Bc2 16.Na5 Kc8 17.Kd2 Bf5



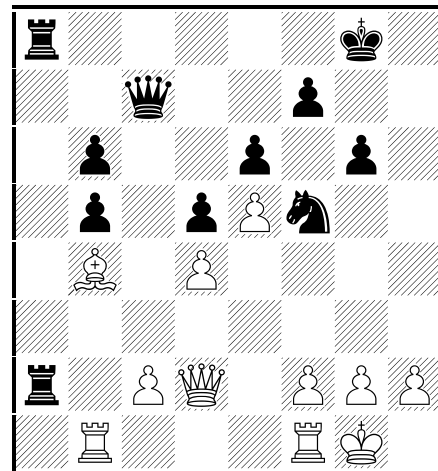
18.Nxc6 bxc6 19.Bxa6+ Kd8 20.Bb7 Rxa1 21.Rxa1 e5 22.Bxc6
Bg7 23.f3 Nb8 24.b5 Nxc6 25.bxc6 exd4 26.exd4 Bc8 27.Be5
Re8 28.Ra7 Be6 29.Nb5 Nh5 30.Ra8+ Ke7 31.Bd6+ 1-0

Charbonneau - Formanek [C18]

Donald Byrne Memorial State College, PA

1.e4 e6 2.d4 d5 3.Nc3 Bb4 4.e5 c5 5.a3 Bxc3+ 6.bxc3 Qc7 7.Nf3
Bd7 8.a4 Ne7 9.Be2 Bc6 10.0-0 Nd7 11.a5 a6 12.Ng5 h6
13.Nh3 Bb5 14.Ba3 Nc6 15.Bxb5 axb5 16.Qg4 g6 17.Nf4 Ne7
18.Nd3 cxd4 19.cxd4 Rxa5 20.Bd6 Qb6 21.Bb4 Ra4 22.Nc5

Nxc5 23.Bxc5 Qc7 24.Qf4 0-0 25.Qxh6 Rfa8 26.Rab1 Nf5
27.Qd2 b6 28.Bb4 Ra2



29.g4 Rxc2 30.Qf4 Ng7 31.Rb3 Qc4 32.Rf3 Ra7 33.Bd2 Qe2
34.Be3 Rca2 35.Kg2 b4 36.Qf6 Rd7 37.Qh4 g5 38.Qh6 Ra3 39.Rh3
Qxg4+ 40.Kh1 Kf8 41.Qh8+ Ke7 42.Qxg7 1-0

Rogers - Simpson

Donald Byrne Memorial State College, PA

1.e4 d5 2.exd5 Qxd5 3.Nc3 Qa5 4.d4 Nf6 5.Nf3 Bf5 6.Ne5 c6 7.Bc4
e6 8.0-0 Nbd7 9.Qe2 Nxe5 10.dxe5 Nd5 11.Ne4 Be7 12.Bb3 Qc7
13.Ng3 Bg6 14.Re1 0-0 15.Qg4 Nb4 16.Nh5 Rfd8 17.a3 Nd5 18.h4
Bc5 19.Nxg7 Kxg7 20.h5 Kh8 21.hxg6 Rg8 22.Qh4 Rxg6 23.Bxd5
Be7 24.Qc4 exd5 25.Qd4 Rag8 26.g3 b6 27.b4 Qc8 28.Kg2 Rg4
29.Qd3 Qe6 30.Rh1 R8g6 31.Bd2 Qxe5 32.Rae1 Qd6 33.Qf5 Bf8
34.Rh3 Kg8 35.Re8 Re4 36.Ra8 Re5 37.Qc8 Kg7 38.Bf4 Rge6
39.Rh4 Qe7 40.Rg4+ 1-0

Muhammad - Kriventsov

Donald Byrne Memorial State College, PA

1.d4 Nf6 2.Nf3 g6 3.c4 Bg7 4.Nc3 d5 5.Bg5 Ne4 6.cxd5 Nxd5
7.Nxg5 e6 8.Qa4+ Bd7 9.Qb3 Qxg5 10.Qxb7 0-0 11.Qxa8 Nc6
12.h4 Qh6 13.Qb7 Nxd4 14.Kd1 exd5 15.Qxd5 Bf5 16.e3 Bf6
17.Ne4 Qg7 18.Bc4 Be6 19.Qc5 Rd8 20.Nd2 Bg4+ 21.f3 Bxf3+
22.gxf3 Nxf3 23.Bd5 Nxd2 24.Ke2 Bxb2 25.Rad1 Bc3 26.Rc1 Ne4
27.Bxe4 Rd2+ 28.Kf3 Qf6+ 29.Bf5 Be5 30.e4 Bd4 31.Qc6 Rf2+
32.Kg4 gxf5+ 33.Kh3 Rf3+ 34.Kg2 Qg7+ 0-1

US MASTERS 2002 by Bruce Leverett

Here are some impressions and games from the U.S. Masters, held in Chicago from Feb. 28 to March 3. The winners were Gregory Kaidanov, Alexander Onischuk, Daniel Fridman, Leonid Yudasin, and Alek Wojtkiewicz, with 5.5 of 7. Six people qualified for the 2002 U.S. Championship from this tournament, among them Stanislav Kriventsov of State College.

There is really nothing like this tournament on the U.S. calendar, for strength per square foot. There were only 101 participants, but the roster at the top was comparable to a National Open or World Open. The five winners were all Grandmasters, and at least ten other Grandmasters can be found in the crosstable.

Although I had never played in a U.S. Masters before, in a way I was returning after a long absence. I had played in the Midwest Masters tournaments four times from 1985 to 1989. I recognized the present U.S. Masters as a continuation of that bygone series, not least because

it was organized by Jim and Helen Warren. Only the crosstable betrayed the passage of time. It was stronger, of course. In 1985, I had tied for first with two International Masters, Vince McCambridge and Igor Ivanov. Already in 1986, with the arrival of a carload or two of Grandmasters from New York, the tournament had become too strong for the likes of us three. But as I greeted the Warrens in 2002, I announced that I was hoping for lightning to strike again in the same place! (It didn't.)

I was also impressed by the contingent of old-timers. When I was starting out in chess, in the 1960's, the leading amateur players around the country included Viktors Pupols (Pacific Northwest), John Curdo (New England), Andrew Karklins (Illinois), and Curt Brasket (Minnesota). They were all at this tournament. This seemed to me like a rare conjunction of planets.

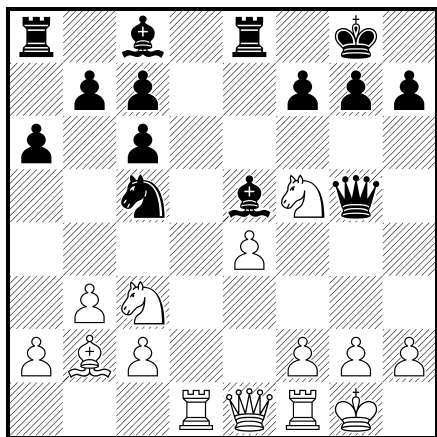
I met Alan Watson for the first time, though he has been producing bulletins for major tournaments for a number of years. I also learned something that chess database users have known for years about how tournament bulletins are produced. Watson does very little typing! He moves pieces around on a computer screen using a mouse, and lets the database software produce the score for him. Eureka! But no amount of computer power can enable Watson to read illegible scoresheets.

One of the flashiest games was Blatny-Goldin, from the third round:

Blatny - Goldin [C85]

US Masters, 2002

1.e4 e5 2.Nf3 Nc6 3.Bb5 a6 4.Ba4 Nf6 5.0-0 Be7 6.Bxc6 The DERLD, Delayed Exchange Ruy Lopez Deferred. This was fashionable for a while among amateur players after L.M. Pickett wrote a booklet about it in the late 1970's. 6...dxc6 7.Qe1 Nd7 8.b3 0-0 In the next round, Ibragimov played 8 ... c5 against Blatny and drew rather easily. 9.Bb2 Bd6 10.d4 exd4 11.Nxd4 Re8 12.Nf5 Be5 13.Nc3 Nc5 14.Rd1 Qg5



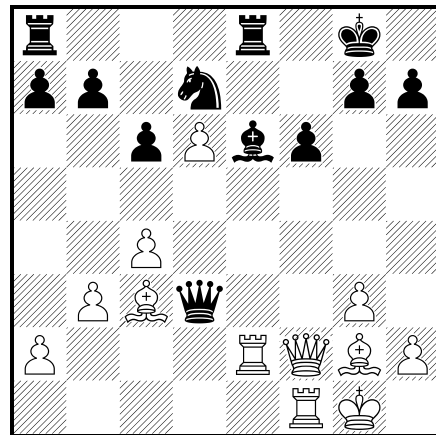
15.f4! Ouch! 15...Bxf4 16.h4 Qg4 17.Nxg7 Qxg7 If 17 ... Kxg7 18 Rxf4 and 19 Nd5+. 18.Rxf4 f6 19.Qf2 Nd7 20.Ne2 Ne5 21.Ng3 Bg4 22.Rf1 Rf8 23.Nf5 Bxf5 24.Rxf5 Ng4 25.Qe2 Qg6 26.e5 Rae8 27.h5 Qg7 28.Qc4+ 1-0

I was particularly interested in Onischuk-Blatny, from the last round, not only because Onischuk played what looked like a daring gambit, but also because it was a must-win situation for both players; a draw would only have been good enough for a tie for 5th, and a much smaller prize. Onischuk's win put him in the tie for 1st. I am grateful to Alex Onischuk for both the game score and the light notes:

Onischuk - Blatny [D31]

US Masters, 2002 [Onischuk, Alex]

1.d4 d5 2.c4 c6 3.Nc3 e6 4.e4 dxe4 5.Nxe4 Bb4+ 6.Bd2 Qxd4 7.Bxb4 Qxe4+ 8.Ne2 Ne7!? 9.Qd2! Nd7 10.f3 Qh4+ [10...Qxc4?? 11.Nf4] 11.g3 Qf6 12.Bg2 0-0 13.0-0 Re8 14.f4 [14.Rad1!? Onischuk - Sevillano, Linsborg 2001.] Nf8 15.Nc3 Nf5 16.Ne4 Qg6 [16...Qd4+ 17.Qxd4 Nxd4 18.Nd6 Rd8 19.Rad1 Nc2 20.Bc5! Nd7 21.Bf2+/-=]17.Rae1 e5? [better 17...b6 18.Nd6!? Nxd6 19.Qxd6 Bb7 20.Qc7 Ba6 21.b3© c5!? 22.Bc3]18.fxe5 Be6 19.b3 Rad8 20.Nd6 Nxd6 21.exd6 +/- Nd7 22.Qf2 Ra8 23.Bc3 f6 24.Re2 Qd3?



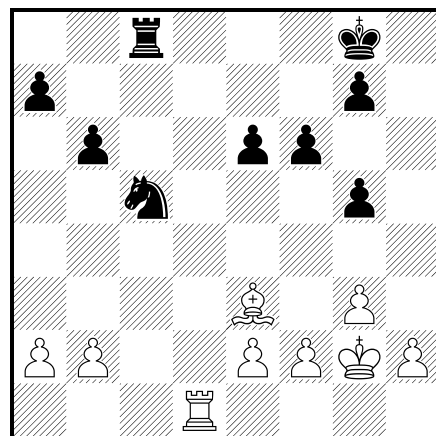
25.Bd4 Qg6 26.Rfe1 Qf7 27.Re4 Rad8 28.Qe2 Nf8 29.Bxa7 +/- h5 [29...Rxd6 30.Bc5 Rdd8 31.Bxf8] 30.Bc5 Nd7 31.Bd4 Ne5 32.Bxe5 Bg4 33.Qe3 fxe5 34.Rxe5 Rf8 35.c5 Qg6 36.h3 Bd7 37.Qg5 Qc2 38.Re7 Qf2+ 39.Kh2 Qf6 40.Qxf6 Rxf6 41.Rf1 1-0

Ildar Ibragimov looked good for the first five rounds, but then lost this game to Daniel Fridman. Fridman's play was a model of calm and accuracy, getting the most from a position that seemed hopelessly drawn already on the seventh move:

Fridman- Ibragimov [E18]

US Masters, 2002

1.Nf3 Nf6 2.c4 b6 3.g3 Bb7 4.Bg2 e6 5.0-0 Be7 6.Nc3 0-0 7.d4 Ne4 8.Bd2 d5 9.Ne5 Nxc3 10.Bxc3 Nd7 11.cxd5 Nxe5 12.d6 Bxg2 13.dxe7 Qxe7 14.Kxg2 Nd7 15.Qa4 c5 16.Rfd1 Rfd8 17.Rac1 h6 18.dxc5 Nxc5 19.Qg4 Qg5 20.Qxg5 hxg5 21.Bd4 Rac8 22.Be3 Rxd1 23.Rxd1 f6



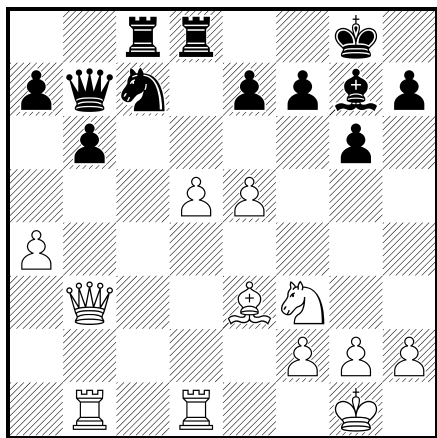
24.b4 Na6 25.b5 Nc5 26.Kf3 Kf7 27.Rc1 Ke7 28.h4 gxh4 29.gxh4 Rc7 30.Bxc5+ bxc5 31.Ke4 Kd6 32.Kd3 Kd5 33.Kc3 c4 Around this point, both players were in time trouble. 34.a4 f5 35.a5 Rc8 36.b6 axb6 37.axb6 Ra8 38.Kb4 Ra2 39.Rxc4 1-0

Pennsylvania was represented by Kriventsov, IM Ed Formanek, and myself. Looking through the bulletins for Kriventsov's games, I thought that his three wins were not as interesting as this high-tension last-round draw with GM Yuri Shulman:

Shulman-Kriventsov [D85]

US Masters, 2002

1.d4 Nf6 2.c4 g6 3.Nc3 d5 4.cxd5 Nxd5 5.e4 Nxc3 6.bxc3 Bg7 7.Nf3 c5 8.Rb1 0-0 9.Be2 b6 10.0-0 Bb7 11.Qd3 Ba6 12.Qe3 cxd4 13.cxd4 Qd7 14.Bxa6 Nxa6 By straightforward play White has kept a small advantage. 15.Qb3 Nc7 16.Rd1 Ne6 17.Be3 Rac8 18.a4 Qb7 19.e5 Nc7 20.d5 Rfd8



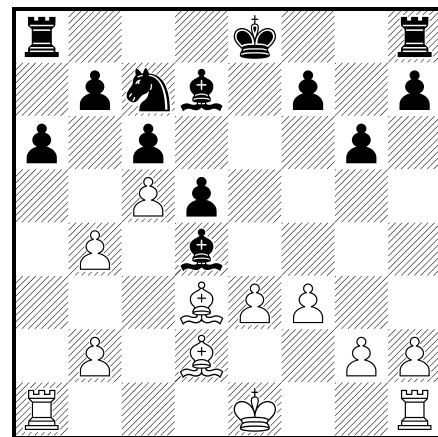
21.Rbc1 Indirectly defending the d-pawn. Ra8 Renewing the threat. 22.d6 exd6 23.Bg5 Rd7 24.exd6 Ne6 25.Be7 Rc8 26.Qe3 Rc5 27.h4 h6 28.Rxc5 bxc5 29.Ne5 Bxe5 30.Qxe5 Qb4 31.a5 a6 Black's position hangs by a hair. For instance, 31 ... Qxa5? 32 Rb1 brings instant destruction. But Shulman cannot find a way to break through. 32.Bf6 Kh7 33.h5 Qf4 34.Rb1 Rxd6 35.Qxf4 Nxf4 36.hxg6+ Kxg6 37.Be7 Rd5 38.Rb6+ Kf5 39.Rxa6 c4 40.Rf6+ Ke4 41.Rc6 1/2-1/2

Formanek finished with a disappointing score, but not before winning this fine game from IM Boris Kreiman:

Formanek - Kreiman [D11]

US Masters, 2002

1.d4 d5 2.c4 c6 3.Nf3 Nf6 4.Qc2 g6 5.Bf4 Bf5 6.Qb3 Qb6 7.c5 Qxb3 8.axb3 Na6 Two rounds later, Formanek-Lein followed the same variation until this point, when Lein varied with 8 ... Nbd7. That game continued 9 Nc3 a6 10 b4 Rc8 11 h3 Bg7 12 Nd2 Ne4 13 Ncxe4 Bxe4 14 O-O-O Bf5 15 g4 Be6 16 e3 f5 17 Be2 O-O 18 Nb3 Ra8! 19.Na5 Ra7, and in this interesting position Formanek blundered with 20 Kd2? fxg4 21 hxg4 Bxd4. Was Lein's 8th move an improvement? Perhaps, but it doesn't solve the problem of defending Black's helpless queenside. 9.Nc3 Nh5 10.Bd2 Bg7 11.e3 Nc7 12.b4 a6 13.Ne5 Nf6 14.f3 Nd7 15.Nxd7 Bxd7 16.Bd3 e5 17.Ne2 exd4 18.Nxd4 Bxd4 Black confidently chops away, expecting that his "good knight" will handle White's "bad bishop". But it's not so simple.



19.exd4 Bf5 20.Bxf5 gxf5 21.Ke2 Ne6 22.Kd3 Ke7 23.Rae1 Rag8 24.g3 h5 25.Bf4 h4 26.Bd6+ Kd7 27.Rhf1 hxg3 28.hxg3 Rh2 29.Re5 Rg5 30.g4 Rxb2 31.Kc3 Rg2 32.gxf5 Ng7 33.Re7+ Kd8 34.Rh1 Nxf5 35.Rxf7 Nxd6 36.cxd6 Rg6 37.Rhh7 1-0

Thanks to Jim Warren for this crosstable, and to Bill Smythe for converting it to ASCII

U.S. Masters (Martinovsky Memorial) February 28 - March 3, 2002

1	KAIDANOV Greg	GM	2694	W	71	W	8	D	3	W	29	D	2	W	16	D	4	5.5
2	ONISCHUK Alex	GM	2735	W	75	W	14	W	30	D	16	D	1	D	6	W	15	5.5
3	FRIDMAN Daniel	GM	2522	W	36	W	44	D	1	D	4	W	58	W	28	D	5	5.5
4	YUDASIN Leo	GM	2649	W	35	W	48	D	29	D	3	W	15	W	31	D	1	5.5
5	WOJTKIEWICZ Algm		2675	H		W	94	D	62	W	25	W	17	W	7	D	3	5.5
6	GUREVICH Dmi	GM	2646	W	101	W	52	D	7	D	13	W	14	D	2	D	8	5
7	ANDRIANOV Nik	IM	2467	W	45	W	60	D	6	D	9	W	19	L	5	W	28	5
8	WATSON John	L	IM 2371	W	84	L	1	W	45	W	42	D	10	W	30	D	6	5
9	SERPER Grego	GM	2609	W	65	W	58	D	17	D	7	D	13	W	41	D	11	5
10	FEDOROWICZ J	GM	2583	W	68	W	86	D	13	D	17	D	8	W	40	D	12	5
11	DONALDSON W	IM	2526	D	49	W	74	D	38	W	34	D	12	W	21	D	9	5
12	DOSS Jason	LM	2357	L	20	W	83	W	85	W	46	D	11	W	23	D	10	5
13	PASCHALL Willi	M	2451	W	96	W	73	D	10	D	6	D	9	D	32	W	29	5
14	LEIN Anatoly	GM	2441	W	88	L	2	W	77	W	75	L	6	W	58	W	31	5
15	BLATNY Pavel	GM	2572	W	57	W	55	W	19	D	28	L	4	W	22	L	2	4.5
16	SHULMAN Yuri	GM	2646	W	66	W	72	W	18	D	2	D	28	L	1	D	17	4.5
17	KRIVENTSOV	FM	2461	W	95	W	46	D	9	D	10	L	5	W	38	D	16	4.5
18	ADLER Victor	IM	2492	W	83	W	20	L	16	D	27	D	38	W	62	D	26	4.5
19	GOLDIN Alexan	GM	2706	W	54	W	40	L	15	W	47	L	7	D	51	W	32	4.5
20	ARAMIL William	J	2098	W	12	L	18	W	61	D	22	L	43	W	79	W	51	4.5
21	GRATZ Glen	E	2168	W	59	H		D	22	W	72	D	23	L	11	W	41	4.5
22	PALOS Osman	IM	2382	D	32	D	92	D	21	D	20	W	76	L	15	W	42	4.5
23	ZIATDINOV Ras	IM	2502	D	74	D	85	W	35	W	62	D	21	L	12	W	44	4.5
24	GERSHOV Yevge	LM	2335	L	46	W	95	W	33	D	30	L	32	W	49	W	40	4.5
25	PEDZICH Domin	IM	2345	H		W	81	D	42	L	5	W	33	D	43	W	52	4.5
26	PRIVMAN Bor	FM	2256	L	28	W	82	W	64	D	40	D	29	W	59	D	18	4.5

27	LANGER Mikh	LM	2293	L 73	W 96	W 60	D 18	L 41	W 76	W 43	4.5
28	IBRAGIMOV Il	GM	2703	W 26	W 80	W 31	D 15	D 16	L 3	L 7	4
29	GEORGIEV Vla	GM	2500	W 93	W 53	D 4	L 1	D 26	W 48	L 13	4
30	SCHNEIDER Dm	FM	2544	W 89	W 33	L 2	D 24	W 47	L 8	D 34	4
31	MITKOV Nikol	GM	2508	W 50	W 37	L 28	W 48	W 44	L 4	L 14	4
32	KLEIMAN Jake		2141	D 22	L 47	W 49	W 80	W 24	D 13	L 19	4
33	HAESSEL Dale R		2177	W 41	L 30	L 24	W 69	L 25	W 66	W 58	4
34	BERELOS Pete	LM	2321	D 67	D 56	W 53	L 11	D 37	W 77	D 30	4
35	PUPOLS Vikto	LM	2249	L 4	W 91	L 23	W 45	L 59	W 85	W 63	4
36	VAN METER Les	FM	2205	L 3	L 43	W 82	L 39	W 87	W 78	W 59	4
37	BARTHOLOMEW John		2166	W 51	L 31	L 58	W 66	D 34	D 63	W 61	4
38	SZPISJAK Stev	LM	2252	B	H	D 11	D 41	D 18	L 17	W 60	4
39	GORLIN Andrey		2049	H	D 61	L 75	W 36	D 54	D 71	W 79	4
40	ZLOTNIKOV Mik	IM	2432	W 97	L 19	W 66	D 26	W 50	L 10	L 24	3.5
41	SARKAR Just	IM	2410	L 33	W 89	W 65	D 38	W 27	L 9	L 21	3.5
42	CATES James Ste		2030	D 47	W 79	D 25	L 8	D 71	W 54	L 22	3.5
43	KREIMAN Bori	IM	2543	L 44	W 36	W 69	L 58	W 20	D 25	L 27	3.5
44	ESSERMAN Marc	NM	2207	W 43	L 3	W 99	W 59	L 31	D 72	L 23	3.5
45	HOOVER Nathan E		2194	L 7	W 63	L 8	L 35	W 86	W 67	D 47	3.5
46	ZILLMER Joshua		2079	W 24	L 17	W 55	L 12	D 61	W 75	--	3.5
47	LEVERETT Bru	LM	2321	D 42	W 32	W 76	L 19	L 30	D 60	D 45	3.5
48	BETANELI A	LM	2315	W 91	L 4	W 56	L 31	W 53	L 29	D 50	3.5
49	TSYGANOV Ig	NM	2206	D 11	L 76	L 32	W 84	W 57	L 24	W 73	3.5
50	DEAN Jim H	FM	2202	L 31	D 51	W 84	W 52	L 40	D 61	D 48	3.5
51	YOUNG An	IM	2396	L 37	D 50	W 94	D 74	W 85	D 19	L 20	3.5
52	ROWLEY Rob	FM	2285	W 98	L 6	D 78	L 50	W 73	W 74	L 25	3.5
53	DONAHUE Jer		2144	X	L 29	L 34	W 65	L 48	D 69	W 77	3.5
54	SIMMS Gary	LM	2269	L 19	W 97	D 73	D 78	D 39	L 42	W 74	3.5
55	ANDERSON Rena	FM	2289	W 90	L 15	L 46	L 85	W 95	W 64	D 56	3.5
56	GORLIN YelenW	FM	2104	H	D 34	L 48	W 86	L 62	W 65	D 55	3.5
57	GREANIAS Stev	LM	2220	L 15	W 90	L 59	D 64	L 49	W 82	W 76	3.5
58	FORMANEK Edwa	IM	2309	W 70	L 9	W 37	W 43	L 3	L 14	L 33	3
59	VIGORITO Davi	FM	2406	L 21	W 93	W 57	L 44	W 35	L 26	L 36	3
60	ZIMBECK David		2082	W 63	L 7	L 27	W 89	D 75	D 47	L 38	3
61	CHOW Albert C	FM	2294	D 64	D 39	L 20	W 95	D 46	D 50	L 37	3
62	ANDREWS Todd	FM	2308	D 78	W 67	D 5	L 23	W 56	L 18	-	3
63	KARKLINS Andre	FM	2354	L 60	L 45	W 67	W 83	D 77	D 37	L 35	3
64	GIBSON Blake		2021	D 61	D 69	L 26	D 57	W 90	L 55	D 68	3
65	STEIN Kurt W	NM	2222	L 9	W 70	L 41	L 53	W 83	L 56	W 84	3
66	ARAVENA Peter	NM	2231	L 16	W 87	L 40	L 37	W 94	L 33	W 88	3
67	KIEWRA Keaton F		2073	D 34	L 62	L 63	W 92	D 68	L 45	W 86	3
68	FEUERSTEIN Art	LM	2220	L 10	W 98	D 80	L 76	D 67	D 73	D 64	3
69	CURDO John A	FM	2242	H	D 64	L 43	L 33	W 88	D 53	D 70	3
70	HEYER Jon		2027	L 58	L 65	L 95	D 82	W 91	W 81	D 69	3
71	DAVIS Loal W	LM	2252	L 1	D 84	W 92	D 73	D 42	D 39	-	3
72	DELAUNE Richar	IM	2375	W 87	L 16	W 86	L 21	D 74	D 44	-	3
73	KINGREY Chaene		2010	W 27	L 13	D 54	D 71	L 52	D 68	L 49	2.5
74	BROWNSCOMBE To	FM	2200	D 23	L 11	W 79	D 51	D 72	L 52	L 54	2.5
75	STAMNOV Aleksa	LM	2279	L 2	W 88	W 39	L 14	D 60	L 46	-	2.5
76	ROGERS Bradley K		2009	H	W 49	L 47	W 68	L 22	L 27	L 57	2.5
77	ROWLAND Todd	WNM	2246	H	D 78	L 14	W 88	D 63	L 34	L 53	2.5
78	STEVANOVIĆ Miomir		2025	D 62	D 77	D 52	D 54	-	L 36	D 83	2.5
79	MOTE David B	NM	2285	H	L 42	L 74	W 94	W 81	L 20	L 39	2.5
80	ZAREMBA Andrei	FM	2379	W 82	L 28	D 68	L 32	W 93	-	-	2.5
81	QUAN Zhe		2141	H	L 25	-	W 96	L 79	L 70	W 90	2.5
82	FELDBERG Victor		2103	L 80	L 26	L 36	D 70	W 92	L 57	D 87	2
83	SHARP Dale Eug	LM	2200	L 18	L 12	W 91	L 63	L 65	D 87	D 78	2
84	CHRISTIAN King P		2100	L 8	D 71	L 50	L 49	D 97	W 96	L 65	2
85	VOELKER James		2178	H	D 23	L 12	W 55	L 51	L 35	-	2
86	HANKEN Jerry	LM	2200	X	L 10	L 72	L 56	L 45	W 97	L 67	2
87	RUDOLPH Roger		2100	L 72	L 66	L 93	W 98	L 36	D 83	D 82	2
88	O'DONNELL Robert		2178	L 14	L 75	W 98	L 77	L 69	W 94	L 66	2
89	WALLACH Kennet	LM	2208	L 30	L 41	W 97	L 60	-	W 90	-	2
90	KARKLINS Erik		2009	L 55	L 57	W 96	D 93	L 64	L 89	L 81	1.5
91	FELBER Joseph J		2029	L 48	L 35	L 83	D 97	L 70	L 92	W 94	1.5
92	CARSWELL George		2159	H	L 22	L 71	L 67	L 82	W 91	-	1.5
93	BRASKET Curt	FM	2200	L 29	L 59	W 87	D 90	L 80	-	-	1.5
94	BENESA Arnulfo		2000	W100	L 5	L 51	L 79	L 66	L 88	L 91	1
95	KLUG Steffen		2186	L 17	L 24	W 70	L 61	L 55	-	-	1
96	SCHNEIDER Igor		2179	L 13	L 27	L 90	L 81	W 98	L 84	-	1
97	DORSEY Philip		2178	L 40	L 54	L 89	D 91	D 84	L 86	-	1
98	MAROVITCH Mark		2000	L 52	L 68	L 88	L 87	L 96	B	-	1
99	ARDAMAN Miles	FM	2383	F	W100	L 44	-	-	-	-	1
100	LEIGHTON George	N	1803	L 94	L 99	-	-	-	-	-	0
101	OLON Nathan	WFM	2230	L 6	-	-	-	-	-	-	0

A Different Approach by Russell Black

How many times have you played the same opening, game after game, with little or no changes? Are you falling into the "boring" trap? Well, here is a game that is rather unconventional. This was game number 1, in a four game CC Lighting Match between myself and Mr. John Cave, of New York.

John Cave (1940) -Russell Black (2048) [B00]

USCF 2000LM23, 2000.10.09

1.e4 Nc6 and Black takes a hypermodern approach. I had never played this opening, the Nimzowitsch Defense, but I was getting rather "bored" with my usual Pirc response. The idea here is that after White plays 2.d4, Black will strike immediately with 2...e5, sharper than the original 2...d5 which was played by Nimzowitsch himself. It creates an imbalance in pawn structure right off and leads to complex play. 2.d4 e5 and White has three responses, 3.dxe5, 3.d5 and 3.Nf3. Of these, 3.d5 gives White more of a fighting chance by driving Black's knight around. 3.dxe5 Nxe5 and White chooses the exchange variation which usually gives Black no problems. 4.Nf3, but 4.f4 is far more aggressive and is the way White should play this opening. 4.Nf3 allows Black to begin trading off pieces, which always helps out in the long run. 4...Nxf3+ brings White's queen out early with 5.Qxf3. The alternative of 5.gxf3 is playable, but has not proven better for White. 5.Qxf3 Qf6 (Diagram 1).

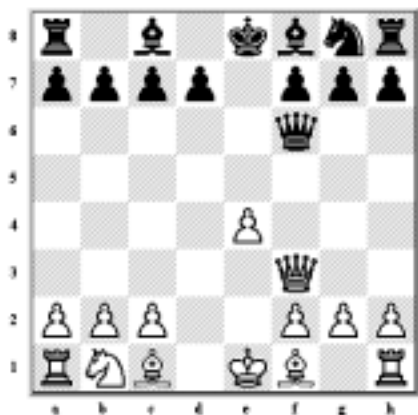


Diagram 1

If White plays the queen exchange with 6.Qxf6, Black gets a comfortable game with 6...Nxf6 7.Bd3 d5 8.Nd2 Be6 9.exd5 Nxd5 10.a3 0-0-0 11.Ne4 h6 12.Bd2 f5 13.Nc3 g6 14.0-0-0 Bg7 15.Bc4 Nf4 16.Bxe6+ Nxe6 17.Ne2 =, or on 7.Nc3 Bb4 8.Bd2 0-0 9.f3 d6 10.Nb5 Bxd2+ 11.Kxd2 Ne8 12.a4 Be6 13.a5 a6 14.Nd4 c5 15.Ne2 d5 16.exd5 Bxd5. The game continued with 6.Qg3 Bb4+. It's been said, "...never play a cheap check with no follow up action." Here is an exception I think. Notice that White has a problem with this check. If he plays 7.Bd2 then Black plays 7...Bxd2+ forcing White to give up castling. If White plays 7.Nd2, he blocks in his bishop. The only other option, 7.c3 does a fine job of blocking the check, but takes away the c3 square from the b2 knight. 7.c3 Bd6 attacking the queen. 8.Qg5, not the normal move here which is 8.f4 with 8...Qg6 9.Bd3 or 9.Qf3 (sharper). I want to point out that Black should not be the one to make the exchange as it helps White develop the bishop on c1. Rather, Black would like White to make the trade which helps Black develop his g8 knight. Never capture your opponent's piece if it helps him develop another. That's like giving him a way to beat you. 8...h6 which puts the pressure on White to trade or back down. 9.Qxf6 Nxf6 10.f3 0-0 11.Be3 Be5 12.Nd2 d5 attacking the center (Diagram 2).

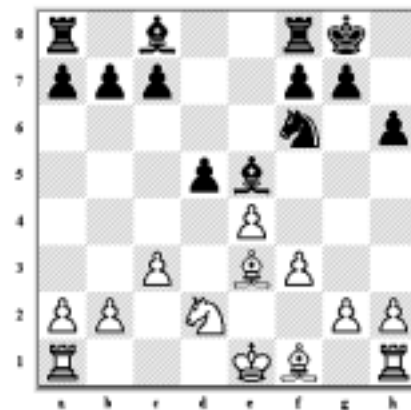


Diagram 2

13.Bd3 and White misses the better move of 13.f4 with 13...Ng4 14.Bc5 Bd6 15.Bxd6 cxd6 16.h3 Nf6 17.exd5 Nxd5 18.g3 Bd7 which does not look so good for Black. 13...Rd8 14.0-0-0 and White sets up the classic struggle of opposite kings. 14...Be6 15.Kb1 d4 16.cxd4 Bxd4 17.Bxd4 Rxd4 18.Bc2 Rad8. Doubling rooks is always a good thing (Diagram 3). The position is about even but the pawn structure will tell the story in a few moves.

Diagram 3

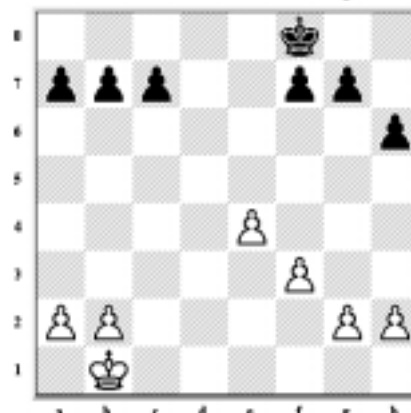


Diagram 4

19.Nb3 Rxd1+ 20.Rxd1 Rxd1+ 21.Bxd1. Here White offered me a draw. If you were to look at the board and think that the position is equal just because the material is even and take the draw, you would be making a big mistake. Black has a won endgame. Look at the position (Diagram 4) with all the remaining pieces removed, leaving just the kings and pawns. Black wins by the following line: 1.Kc2 Ke7 2.Kd3 Kd6 3.Kd4 c5+ 4.Kc4 Kc6 5.a4 b6 6.h4 g6 7.g4 g5 8.h5 (8.hxg5 hxg5) 8...f6 9.b3 a6 10.Kd3 b5 11.axb5+ axb5 12.f4 gxh4 13.e5 Kd5 14.exf6 Ke6 15.Ke4 c4 16.bxc4 b4. Actually, it didn't matter who moved first. This type of endgame pawn structure is typically found (colors

reversed) in the Colle opening. Outside of single king/pawn endgames, this is the only endgame pawn structure that I've had to learn in over 30 years of play. Why? Because once I get this structure, I only need to trade off even and I have a won game in my hands. Even a GM can't win with White (Diagram 4). Novice players (and even experienced ones), should learn to create this structure during their games and then play to trade off even. It's not flashy, or exciting, just good solid chess and it gives you a great advantage over higher rated players knowing that this is true.

Diagram 5

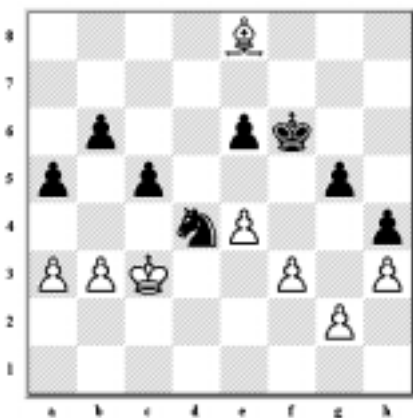


Diagram 6

Now back to the actual position (Diagram 5). The question is, can I trade off the remaining pieces and go into the known winning endgame? Another consideration is, if only two pieces are traded, which would I rather have in an endgame? The logical choice is to allow my bishop to be traded for his knight. That leaves me with a knight which can go to both colors vs. a bishop which must stay on the light squares. **21...b6** So, why not get the trade immediately with **21...Bxb2?** Because it would improve the position of White's bishop after **22.Bxb3**. Again, don't help your opponent improve his position! **22.Nd4** and here comes the trade I'm looking for... **22...c5** **23.Nxe6 fxe6** and now I just have to lock up the position by placing my pawns on the dark squares. **24.Bb3 Kf7** **25.Kc2 g5** **26.Kd3 Nd7** **27.Bc4 Ne5+**. It would be a big mistake for Black to capture the bishop as it allows the White king access to c4. **28.Kc3 h5** **29.h3 Kf6** **30.b3 Nc6**, the knight is going for the outpost square on d4 which is now a key square in this game. **31.a3 a5** **32.Bb5 Nd4** **33.Be8 h4** (Diagram 6). Black has achieved his objectives. The pawns are on dark squares, safe from the White bishop and the Black knight on d4 is in an attacking position. The game then took a tragic turn with **34.Kd3??**. White blunders badly. White had to try **34.Kc4 Ke7** **35.Bg6 Kd6** **37.Kb5 Kc7** **38.a4 e5** to hold on a little longer. Now **34...Nxb3**, and White resigned. White can no longer hope to hold out against Black's 3-to-1 pawn advantage on the queenside. **0-1**

This was a new opening for me at the time. I had very little reference material to draw from during the game, but since then I have put together a nice database of games. This opening appeals to me because of the unique tactical features inherent in the positions. I never would have known that had I not tried it. It has become part of my opening repertoire and I play it from time to time when I need a break from the "usual" stuff.

Try some new openings from time to time, spice up your play a little. Also, you'll learn a lot. Good luck with your own discoveries.

IM Chiong wins Philadelphia Championship

With only 21 paid entries and \$1300 in guaranteed prizes (\$2600 total, half guaranteed), 12 of the 21 entries took home cash prizes plus one silver cup, at the 2002 Philadelphia Championship, a USCF Grand Prix event held May 18-19 at the University of Pennsylvania.

IM Luis Chiong beat FM Boris Baczyński in the final round to take clear first with 4.5/5, unseating NM Elvin Wilson as the area champion. Four players tied for 2nd with 3.5-1.5: NM Rodion Rubenchek, FM Pete Rogers, Kurt Schneider, and Alex Graeffe. Kurt edged out Alex on tiebreak to take the silver cup for Top Junior as they shared Top U2200 and Top U2000.

Baczyński took the 2nd U2400 prize. Joining him at 3-2 were Larry Pugh (2nd U2000), Mark Chanel, and Ross Berkowitz. Mark and Ross shared 1st-2nd U1800. Tying for 2nd U2000 were Joe Mucerino Jr., Don Quiring, and Alisa Melekchina.

Before the 3rd round there was a brief ceremony honoring the Modern Chess Hall of Fame. Accepting their certificates were Boris Baczyński, Jim Politowski, Steve Shutt, Pete Rogers, and Dan Heisman.

Dan Heisman was the TD. The crosstable for the tournament can be found at <http://mywebpages.comcast.net/danheisman/chess.htm>

It is hoped that next year's tournament will also be at U of Penn, likely in late March or early April.

The Philadelphia Scholastic Championship will be Nov 3 at the JCC in Wynnewood, at City Line and Haverford Rd.

-Adapted from a press release by Dan Heisman

DOS HERMANAS by Alex Dunne

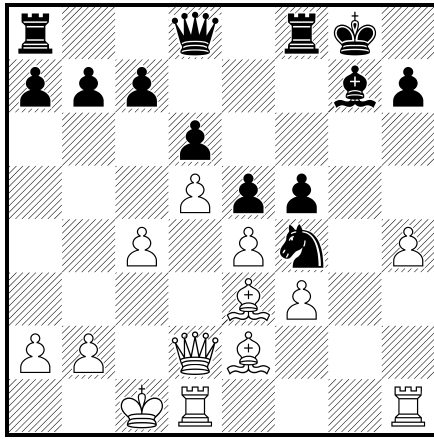
Dos Hermanas -- the tournament that Kramnik, Kasparov, Anand and others play in, GM Heaven (or hell) -- this year the Internet offered thousands of chess players all over the globe a chance to qualify for a position at Dos Hermanas. Friday afternoon I sat at my computer prepared to play a nine round online Swiss. There were 334 players in my section. The time limit was fast: 8 minutes with a 2 second increment; the eventual winner was V. Popov of Russia with 8 1/2-1/2. My best game was the following against Cristhian Montero of Chile. Oh yes, I finished at 6-2 (+5 =2 -2) and had a lot of fun!

Alex Dunne - "josefina" [A42]

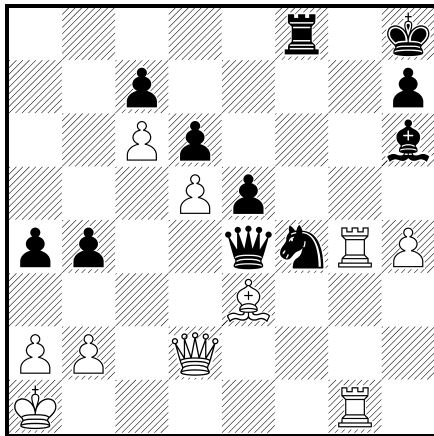
DosHermanas (7), 2002 [*Cristhian Montero (Chile)*]

1.d4 g6 2.c4 Bg7 3.Nc3 d6 4.e4 Nc6 5.Be3 e5 6.d5 Nd4 7.Nge2 Bg4 This was a bit of a bluff -- White could now play 8. f3 without having to fear 8...Bxf3 9. gxf3 Nxf3+ 10. Kf2 Qf6!? 11. Ng3 Nxh2+ 12. Kg2 Nxf1 13. Rxf1 is in White's favor. **8.Qd2 Bxe2 9.Nxe2 Nxe2 10.Bxe2 Nf6 11.f3 0-0 12.h4** White elects a kingside attack, but 12. 0-0 Nh5 13. b4! is also good for White. **12...Nh5 13.g4 Nf4!?** Of course White will not sell his dark squares for a Pawn. Instead he will intensify the struggle on the

kingside. 14.0-0 f5 15.gxf5 gxf5



16.Rdg1 fxe4 17.fxe4 Kh8? Last chance for Nxe2 with some chances to hold. Now the white squares collapse. 18.Bg4! Bh6 19.Bf5 Qe8 20.Kb1 b5 21.c5! a5 22.c6 White has established a positionally won game with play on both sides of the board. 22...Qh5 23.Rf1 Rxf5 The exchange sacrifice does not stop White's initiative. 24.exf5 Qxf5+ 25.Ka1 Qe4 26.Rhg1 b4 27.Rg4 Rf8 28.Rfg1 a4



29.Bxf4! Bxf4 30.Qg2 Dominating the g-file and forcing an easily won endgame due to the weakness on c7. 30...Qxg2 31.R1xg2 a3 32.bxa3 bxa3 33.Kb1 The King is on an express route to d7! 33...Rb8+ 34.Kc2 Rb2+ 35.Kd3 Rb8 36.Ke4 h6 37.Kf5 Kh7 38.Rg7+ Kh8 39.Rxc7 Rf8+ 40.Ke6 e4 41.Rf7 Re8+ 42.Kd7 1-0

CHess IN CENTURIES PAST by Ross Nickel

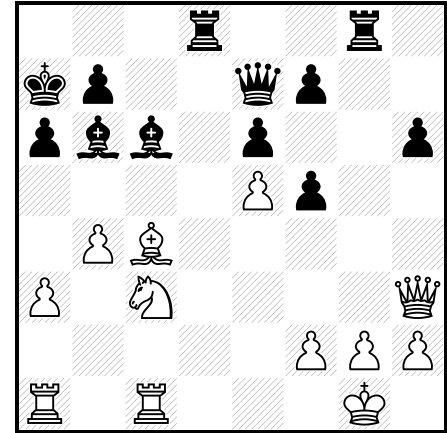
"During play your analytical work is being continually tested against your critically-minded opponents, but in home analysis it is very easy to be unobjective. To fight this tendency, and to get away from poor analysis, it is useful to publish your individual analytical work. Then you are subject to objective criticism." -M. Botvinnik

John Lindsay McCutcheon (1858-1905) lived most of his life in Pittsburgh, PA. The variation in the French Defense 1.e4 e6 2.d4 d5 3.Nc3 Nf6 4.Bg5 Bb4 bears his name. One of his earliest successes with that variation, in a simultaneous display against Wilhelm Steinitz, was published in an article by John S. Hilbert at The Campbell Report, www.correspondencechess.com/campbell

Steinitz – McCutcheon [C12]

New York Simultaneous Display New York, 1885

1.e4 e6 2.d4 d5 3.Nc3 Nf6 4.Bg5 Bb4 5.e5 h6 6.Bxf6 gxf6 7.Nf3 f5 8.Bd3 c5 9.dxc5 Bxc5 10.0-0 Nc6 11.Qd2 Qe7 12.Qf4 Bd7 13.Nb5 0-0-0 14.c4 Be8 15.Rfc1 Kb8 16.a3 a6 17.Nc3 dxc4 18.Bxc4 Nd4 19.Ne2 Nxf3+ 20.Qxf3 Bc6 21.Qh3 Ka7 22.b4 Bb6 23.Nc3 Rhg8



24.Bf1 Rd2 25.Nd1 Qg5 26.Rxc6 bxc6 27.Qc3 Qf4 28.Qxc6 Rxd1 0-1

Book Reviews by Dr. Ira Lee Riddle

Everyman Press (Globe-Pequot Press, P. O. Box 480; 246 Goose Lane; Guilford CT 06437; 800-962-0973) has come out with several new books, and they look pretty good. Two of them are in a series, with a third due out anytime now. **mastering the middlegame** by IM Angus Dunnington (\$19.95) covers four main themes: Attacking the King, Defense, Opening Lines, and Using Pawns and Pieces. Diagrams are plentiful and the text is easy to read. Examples are drawn from relatively current games (mostly mid-1990s).

mastering the endgame by GM Glenn Flear (\$19.95) is the other book just published. Flear explains the strategic ideas behind all important endgames. He also provides many exercises to keep the ideas flowing. As with the prior book, there is too much to absorb at one sitting. I was impressed with the sections on Rooks, but was overwhelmed when I first went through it. These two books will be for the more serious student, or for someone who wants to learn about a certain type of situation. Both are easy to read and the layout provides a lot of white space. Not only is this good for the eyes, but it leaves space for writing notes.

IM Bryon Jacobs provides an updating to the **french classical** (\$19.95), along with explanations of the basic elements. This opening is 1 e4 e6 2 d4 d5 3 Nc3 Nf6. Games are current to 2000, including several by Kasparov and Anand. This is a detailed study, for the advanced player more than the casual one.

Nimzo-Larsen attack is by IM Bryon Jacobs and Jonathan Tait (\$19.95). This one is written somewhat towards the middle-level players, as well as for the advanced ones. By opening 1 b3, Black will often be at a disadvantage, not being too sure what to respond. Nine major lines are discussed and analyzed. Games from 1927 through 2000 are used, including several played by computers! This is a good book, although the layout left a little bit to be desired.

GAMES BY PSCF MEMBERS

Stan Booz (1700) - Robert Kampia (1700) [E00]

North Penn CC (5), 07.10.2001

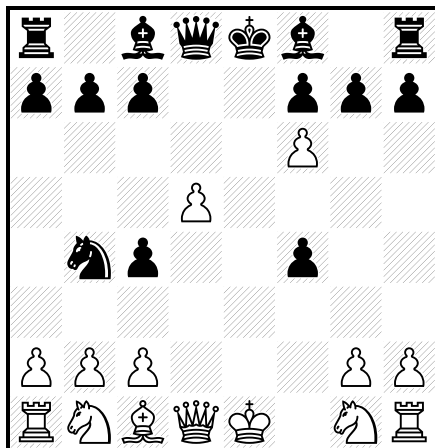
1.d4 e6 2.c4 Nf6 3.g3 Nc6 4.Bg2 d6 5.Nf3 Rb8 6.0-0 g6 7.d5 Ne7 8.Qa4+ Bd7 9.Qxa7 exd5 10.cxd5 Nfxd5 11.Qd4 f6 12.Ng5 c5 13.Bxd5 cxd4 14.Bf7# 1-0

FM Peter Fleischer (2360) - Alan Deckelbaum (1800) [C33]

MLCC Practice G/30 TD/5, 18.12.2001

Notes by Dan Heisman

1.f4 e5 2.e4 exf4 3.Bc4 Nc6 4.d4 Nf6 5.e5 d5 6.exf6 dxc4 7.d5 Nb4

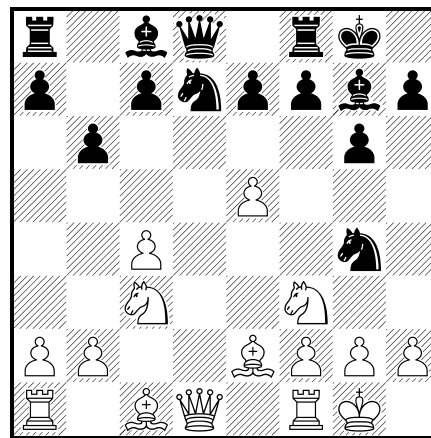


[...Ne5 (Fritz 7: 7...Qxf6 8.dxc6 Qxc6 9.Bxf4 Qxg2 10.Qe2+ Qxe2+ 11.Nxe2 Bf5 12.Nd2 Bxc2 13.Nxc4; Fritz 7: 7...Nb4 8.Qe2+ Kd7 9.fgx7 Bxg7 10.Qxc4 Qe7+ 11.Kf2 Re8 12.Bxf4) 8.fgx7 Bxg7 9.Bxf4 Qf6 10.Qc1 Bf5 11.Qe3 Bxc2 12.Nf3 Qb6 13.Qxb6] **8.Qe2+ Kd7 9.Nf3** [9.Qg4+ Ke8 10.fgx7 Bxg4 11.gxh8Q Qxd5 12.Kf2 Kd7! 13.Nc3 Bc5+ 14.Kf1 Qf5! 15.Qg7 (15.Qxa8 Qxc2+) 15...Re8 16.Nce2 f3 17.gxf3 Bxf3 18.Bf4 Bxe2+ 19.Nxe2 Rxe2 20.Kxe2 Qe4+ 21.Kf1 Qf3+ 22.Ke1 Qf2+ 23.Kd1 Qxc2+ 24.Ke1 Nd3+ 25.Kf1 Qf2#] **9...Bd6 10.Qxc4 Re8+ 11.Kf2 Qxf6 12.Nc3 Nxc2! 13.Qa4+ Kd8 14.Qxc2 Bc5+ 15.Kf1 Qa6+ 16.Ne2 Bf5 17.Qxc5 Qxe2+ 18.Kg1 Qd1+ 19.Kf2 Re2# 0-1**

Stan Booz (1700) - Glen Duley (1700) [E91]

North Penn CC (4), 07.10.2001

1.d4 Nf6 2.c4 g6 3.Nc3 Bg7 4.e4 d6 5.Be2 0-0 6.Nf3 Nbd7 7.0-0 b6 8.e5 dxe5 9.dxe5 Ng4

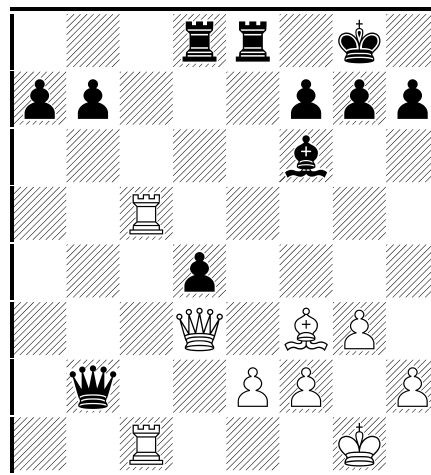


10.e6 fxe6 11.Ng5 Nge5 12.Nxe6 Qe8 13.Nxf8 Qxf8 14.Qd5+ Kh8 15.Qxa8 c6 16.f4 Nf7 17.Qxc6 Nd6 18.Nb5 Nb8 19.Qc7 Na6 20.Qxa7 Ne4 21.Be3 Nac5 22.Qxb6 Na4 23.Qc6 Bf5 24.Nd4 Nxb2 25.Rab1 Nc3 26.Rxb2 Nxe2+ 27.Rxe2 Bd3 28.Ne6 Qb8 29.Rd2 1-0

Stan Booz (1700) - Eric Frickmann (1900) [E01]

Chaturanga Chess League (4), 03.01.2002

1.d4 Nf6 2.Nf3 e6 3.c4 d5 4.g3 c5 5.cxd5 Nxd5 6.Bg2 Nc6 7.Nc3 Qb6 8.Nxd5 exd5 9.dxc5 Bxc5 10.0-0 d4 11.a3 Bf5 12.b4 Be7 13.Bb2 Bf6 14.Qd2 0-0 15.Rac1 Rfe8 16.Rc5 Bg4 17.Re1 Rad8 18.Qd3 Bxf3 19.Bxf3 Nxb4 20.axb4 Qxb4 21.Re1 Qxb2



22.Rb1 Qa2 23.Rxb7 Rb8 24.Qb5 Rbd8 25.Bd5 Qa1+ 26.Kg2 Re7 27.Rb8 Ree8 28.Qxe8+ 1-0

PSCF CROSSTABLES

3rd PA State Quick Chess Championship
March 8, 2002

#	Name	Pre Rat	Post Rat	Rd 1	Rd 2	Rd 3	Rd 4	Rd 5	Rd 6	Rd 7	Score	Prize
1	Kriventsov, Stanislav G	2347	2361	W50	W11	W5	W3	W4	W2	W8	7	\$125
2	Frank, Marty C	2162	2167	W35	W14	W15	W19	W6	L1	W4	6	\$75
3	Minear, Peter R	2106	2101	W39	W33	W10	L1	W14	D7	W13	5½	\$50
4	Bailleau, Gerald A	2154/15	2143/22	W34	W24	W28	W7	L1	W23	L2	5	
5	Mucerino, Joseph J Jr	1942	1933	W55	W26	L1	W21	D9	W30	D7	5	
6	White, Zachary C	1132	1352	W32	D21	W18	W13	L2	D9	W20	5	\$12
7	Papariella, Justin J	1869	1882	W27	W20	W37	L4	W19	D3	D5	5	
8	Milisits, Ryan R	2059	2043	W40	L37	W31	W17	W38	W20	L1	5	
9	Madorsky, Andrew	1504/14	1533/21	W49	L22	W47	W15	D5	D6	W30	5	\$35
10	Tevet, Dan	1409/21	1451	W48	W42	L3	W25	L20	W26	W23	5	\$12

11	Bybel, William H	1028	1222	W51	L1	L56	W44	W31	W25	W22	5	\$12
12	Jacoby, Steven R	1754/16	1706/23	W57	L16	W41	L38	W40	W37	W24	5	\$12
13	Davis, Bruce R I	1603	1585	W43	D17	W16	L6	W18	W33	L3	4½	
14	Harutyunyan, Davit A	1600/21	1603	W46	L2	W40	W56	L3	W27	D15	4½	
15	Booth, Michael J	1531	1542	W56	W38	L2	L9	W39	W19	D14	4½	
16	Green, Kevin R	1051	1223	W61	W12	L13	D30	L17	W21	W32	4½	
17	Bare, Trevor S	1338/17	1369/24	W63	D13	W53	L8	W16	L22	W34	4½	Top Class D
18	Thompson, Zachary	1132/18	1217/24	H-	W66	L6	W32	L13	W35	W33	4½	
19	Milisits, Robert A	1392	1470	W54	W23	W22	L2	L7	L15	W41	4	
20	Fuki, Igar	1145	1243	W59	L7	W57	W28	W10	L8	L6	4	
21	Sehic, Emir	1304/10	1286/17	W58	D6	D25	L5	W29	L16	W48	4	
22	Cox, Michael K	1602	1600	W45	W9	L19	L37	W41	W17	L11	4	
23	Booth, James R	1956	1923	W41	L19	W39	W24	W37	L4	L10	4	
24	Clearwater, Craig T	1283/22	1330	W62	L4	W27	L23	W45	W38	L12	4	
25	Wasiolek, Rory E	1189/23	1196	D44	W36	D21	L10	W43	L11	W42	4	
26	Corter, James H	1420	1402	W47	L5	D32	D43	W56	L10	W39	4	
27	Arasin, Joseph W	1146/21	1241	L7	W65	L24	W58	W28	L14	W37	4	Top Class E
28	Renshaw, David W	1500/23	1461	W52	W31	L4	L20	L27	W51	W38	4	
29	Rhoads, Brian	1045/05	1076/12	L31	W52	L38	W57	L21	W56	W50	4	Top Unrated
30	Sun, Zhipeng	1309	1297	L42	W48	W45	D16	W34	L5	L9	3½	
31	Horst, Matt T	1257/21	1245	W29	L28	L8	W42	L11	D43	W51	3½	
32	Blaise, Christopher S Jr	1171/18	1162/25	L6	W58	D26	L18	W44	W50	L16	3½	Top Class F
33	Reinford, Merle R	1446/17	1398/24	W60	L3	D43	W51	W53	L13	L18	3½	
34	Bolotinsky, Max	1275/16	1240/23	L4	D51	W62	W36	L30	W53	L17	3½	
35	Derksen, Jeremiah J	1016/14	1019/21	L2	D62	L36	W59	W46	L18	W53	3½	
36	Thompson, Benjamin	740/17	890/23	H-	L25	W35	L34	L50	W62	W52	3½	Top Class G
37	Gayo, Abraham T	1741/16	1708/23	W65	W8	L7	W22	L23	L12	L27	3	
38	Blank, John E	1078/13	1147/20	W64	L15	W29	W12	L8	L24	L28	3	
39	Sensenderfer, William L	1334/22	1321	L3	W60	L23	W52	L15	W47	L26	3	
40	Siegele, Christopher	849/17	954/24	L8	W59	L14	W47	L12	D52	D44	3	
41	Hall, Joseph A	1175/24	1186	L23	W54	L12	W49	L22	W58	L19	3	
42	Krumsky, Kameron L	1058/10	1081/17	W30	L10	L50	L31	W49	W45	L25	3	
43	Corey, Tamara H	1053	1093	L13	W63	D33	D26	L25	D31	D46	3	
44	Burgwin, Douglas	1056/10	1029/17	D25	L53	W46	L11	L32	W57	D40	3	
45	Barr, Chris	1234/12	1174/19	L22	W49	L30	W61	L24	L42	W60	3	
46	Siegele, Andrew	1253/07	1145/14	L14	D50	L44	W55	L35	W54	D43	3	
47	Yoder, Jesse	1131/04	1111/11	L26	W55	L9	L40	W57	L39	W56	3	
48	Mc Kay, Nathan D	899/17	907/24	L10	L30	L49	W66	W61	W55	L21	3	
49	Chun, Thomas	999/04	979/11	L9	L45	W48	L41	L42	W64	W59	3	
50	Stoltzfus, E Zachary	921/12	939/19	L1	D46	W42	L53	W36	L32	L29	2½	
51	Wasiolek, David J Sr	829/11	881/18	L11	D34	W66	L33	W54	L28	L31	2½	
52	Cramer, Maxwell R	939/10	906/17	L28	L29	W63	L39	W64	D40	L36	2½	
53	Preston, Zachariah M	783/13	867/19	H-	W44	L17	W50	L33	L34	L35	2½	
54	Son, JiWon	Unr	927/07	L19	L41	D55	W62	L51	L46	W58	2½	
55	Khan, Neiladri K	1156/10	1062/17	L5	L47	D54	L46	W66	L48	W62	2½	
56	Rose, Charles B	1090/17	1071/24	L15	W64	W11	L14	L26	L29	L47	2	
57	Sun, LiAnn	777/21	758	L12	W61	L20	L29	L47	L44	W65	2	
58	Shinn, Stephen A	Unr	821/07	L21	L32	W60	L27	W59	L41	L54	2	
59	Corter, Travis M	816/16	776/23	L20	L40	W64	L35	L58	W63	L49	2	
60	Spock, Sarah Gene	276/23	401	L33	L39	L58	W63	L62	W61	L45	2	
61	Baliles, David	Unr	408/07	L16	L57	W65	L45	L48	L60	W66	2	
62	O'Brien, Conor	899/16	849/23	L24	D35	L34	L54	W60	L36	L55	1½	
63	Anderson, Andrew	794/04	600/11	L17	L43	L52	L60	W65	L59	D64	1½	
64	Inglesby, Peter S	703/04	617/11	L38	L56	L59	W65	L52	L49	D63	1½	
65	Spock, Julie	254/07	253/14	L37	L27	L61	L64	L63	W66	L57	1	Top Under 600
66	Preston, Alexis A	221/10	177/16	H-	L18	L51	L48	L55	L65	L61	½	

Bloomsburg Open & Collegiate Championship
March 9 & 10, 2002

Players

#	Name	Grade	Team	Pre Rat	Post Rat	Rd 1	Rd 2	Rd 3	Rd 4	Rd 5	Score	Prize
1	Kriventsov, Stanislav G	C	PENNS	2476	2484	W37	W17	W5	W4	W6	5	\$150 & 1st Place Coll
2	Pugh, Lawrence B			2011	2037	W53	W29	W19	W12	W11	5	\$150
3	Booth, James R			2085	2096	W36	W22	W7	D11	W13	4½	\$115
4	Frank, Marty C			2137	2140	W55	W21	W8	L1	W22	4	
5	Mucerino, Joseph J Jr			1975	1984	W45	W16	L1	W14	W21	4	\$43
6	Rubenchik, Rodion V			2325	2324	W49	W28	W15	W18	L1	4	
7	Russell, Matthew C	8	UPBRD	1740	1751	W30	W57	L3	W20	W23	4	\$43 & 2nd Place Collegiate
8	Walker, Patrick J			1831	1840	W56	W26	L4	W19	W17	4	\$43
9	Brandt, Eric L			1706	1734	W64	L11	W36	W25	W18	4	\$43
10	Raush, Ronald L			1794	1782	W50	L20	W57	W49	W16	4	\$43
11	Bailleau, Gerald A	C	PENNS	2161	2153	W40	W9	W24	D3	L2	3½	3rd Place Collegiate
12	Minear, Peter R			2104	2093	W34	W27	D38	L2	W33	3½	
13	Rizzo, Philip J			2020	2009	W69	D32	W33	X-	L3	3½	
14	De Luca, Bernard P			1843	1834	D39	W65	W32	L5	W35	3½	
15	Jones, Michael H	C	UPBRD	1926	1920	W43	W46	L6	D35	W32	3½	4th Place Collegiate
16	Freiberg, Joseph			1535	1559	W70	L5	W30	W24	L10	3	\$25
17	Seaman, Robert M			1677	1680	W59	L1	W53	W31	L8	3	
18	Lockard, Bruce T			2019	2005	W42	W35	W20	L6	L9	3	
19	Savere, Michael M	C		1447	1501	X-	W63	L2	L8	W44	3	\$31
20	Neff, Eric P			1428	1491	W44	W10	L18	L7	W50	3	\$31
21	Joline, James T			1677	1680	W66	L4	W40	W43	L5	3	
22	Billingham, Robert A			1580	1589	W67	L3	W54	W51	L4	3	\$25
23	Matthews, Kelly E	C	WARCC	1505	1522	L32	W69	W26	W27	L7	3	\$80

24	Waters, Vincent Garrett Sr		1899	1881	W54	W31	L11	L16	W34	3		
25	South, Jessica	C	UPBRD	1138	1314	D33	D37	W46	L9	W51	3	\$45
26	Gates, William R			1397	1408	W60	L8	L23	W52	W45	3	\$31
27	Evans, Ron L			1632	1619	W48	L12	W45	L23	W53	3	
28	Palkendo, Russell J			1700	1700	W47	L6	D34	D42	W49	3	
29	Reinford, Merle R			1543	1530	W61	L2	L43	W60	W42	3	\$25
30	Moyer, Randy L			1107	1174	L7	W72	L16	W65	W46	3	\$45
31	Gross, Ronald S			1523	1519	W71	L24	W47	L17	W43	3	\$25
32	Chavez, Alex K	C	DREXL	1512	1552	W23	D13	L14	W58	L15	2½	
33	Ferguson, Ryan	C		1826	1809	D25	W39	L13	W44	L12	2½	
34	Coladonato, Steven Jr			1318	1370	L12	W48	D28	W41	L24	2½	
35	Clearwater, Craig T	C		1595	1605	W58	L18	W52	D15	L14	2½	
36	Bias, Larry			1299	1303	L3	W66	L9	D47	W59	2½	
37	Lamonto, Samuel M Jr			1384	1370	L1	D25	L44	W67	W48	2½	
38	Zrinski, Scott A			1851	1860	W52	W51	D12	F-	U-	2½	
39	Sensenderfer, William L	C		1162	1245	D14	L33	L42	W69	W61	2½	
40	Walker, George L Jr			1454	1447	L11	W64	L21	D59	W58	2½	
41	Stolzhus, Dale E	C	WARCC	1129/10	1222/15	L63	D62	W69	L34	W60	2½	
42	Fabian, Attila	C	DREXL	1393	1401	L18	D58	W39	D28	L29	2	
43	Scott, Joseph Jr			1196	1229	L15	W68	W29	L21	L31	2	
44	Miller, Marc R			Unr	1376/05	L20	W50	W37	L33	L19	2	
45	Romascavage, Frank G III			1242/10	1250/15	L5	W61	L27	W66	L26	2	
46	Thomas, Stephen C			1513	1466	W68	L15	L25	W54	L30	2	
47	Buck, Arthur C			1099/22	1175	L28	W55	L31	D36	D57	2	
48	Wasirolek, David J Sr			1063/23	1127	L27	L34	W56	W55	L37	2	\$85
49	Rislow, Victor P III			1299	1302	L6	W59	B-	L10	L28	2	
50	Bowen, Derek P	C	DREXL	1134/20	1151/24	L10	L44	X-	W57	L20	2	
51	Ferguson, Rob	C		1382	1364	W62	L38	W65	L22	L25	2	
52	Dickerson, Keith A			1151/15	1154/20	L38	W71	L35	L26	W66	2	
53	Cook, Roger D			1241	1251	L2	W67	L17	W64	L27	2	
54	De Happart, William R Jr	C	UPBRD	1249	1243	L24	W70	L22	L46	W67	2	
55	Vlasaty, Robert L			1320/20	1272/24	L4	L47	B-	L48	W64	2	
56	Hall, Joseph A			1147	1112	L8	L60	L48	W68	W65	2	
57	Hartzler, Brad			1365	1323	W72	L7	L10	L50	D47	1½	
58	Shaffer, Corry	C		Unr	1295/05	L35	D42	W62	L32	L40	1½	
59	Millard, Chris L	C		1100	1094	L17	L49	X-	D40	L36	1½	
60	Wagner, Andrew R			1195/06	1168/10	L26	W56	H-	L29	L41	1½	
61	Krouse, Ron			Unr	1127/04	L29	L45	H-	W62	L39	1½	
62	Hallur, Sohal S	C		1488/04	1272/09	L51	D41	L58	L61	W69	1½	
63	Ross, William J			1763	1743	W41	L19	H-	U-	U-	1½	
64	Haubold, Henry			1097	1065	L9	L40	X-	L53	L55	1	
65	Blanchard, Katie G	11		855/19	836/23	B-	L14	L51	L30	L56	1	
66	Handerhan, Michael	C	HUSKY	966/05	924/10	L21	L36	W68	L45	L52	1	
67	Hutchinson, Tom	C	DREXL	965	943	L22	L53	B-	L37	L54	1	
68	Calciano, Jennifer A	C		Unr	551/04	L46	L43	L66	L56	B-	1	
69	Willard, Daniel S			1265/13	1188/18	L13	L23	L41	L39	L62	0	
70	Moskva, Michael P	C	HUSKY	Unr	853/02	L16	L54	F-	U-	U-	0	
71	Moskva, Basil M	C	HUSKY	Unr	764/02	L31	L52	F-	U-	U-	0	
72	Moskva, Roman M	C	HUSKY	Unr	798/02	L57	L30	F-	U-	U-	0	

Teams

Score	Team Code	Team Name	Team Type	Prize
12½	UPBRD	Univ of Pittsburgh at Bradford	School	1st Place College
8½	PENNS	Penn State	School	2nd Place College
7½	DREXL	Drexel University	School	
5½	WARCC	Warwick CC	Club	
1	HUSKY	Husky Rooks	School	

K to 12 Open
March 9 & 10, 2002

Players

#	Name	Grade	Team	Pre	Rat	Post	Rat	Rd 1	Rd 2	Rd 3	Rd 4	Rd 5	Score	Prize
1	Milisits, Ryan R	10	TALLD	2087	2091	W35	W3	W28	W13	D2	4½		1st Place & PA HS Champion	
2	Reznik, Roman	12	MASTM	2013	2014	W23	W12	D14	W10	D1	4		2nd Place & PA 12th Grade	
3	Middleman, Scott	12	MASTM	1623	1668	W27	L1	W21	W17	W20	4		3rd Place & PA 12th Grade	
4	Booth, Michael J	10		1839	1840	W46	D11	W25	W16	D5	4		4th Place & PA 10th Grade	
5	Davis, Azaivier	9		1712	1732	W21	W33	D15	W26	D4	4		5th Place & PA 9th Grade	
6	Friedell, David	12	MASTM	1778	1783	W29	W18	D16	D14	W15	4		6th Place & PA 12th Grade	
7	Levy, Jonathan	12	MASTM	1926	1921	W17	L13	W29	W37	W14	4		7th Place & PA 12th Grade	
8	Tokar, Zachary	10	MASTM	1831	1825	W43	L16	W31	X-	W13	4		8th Place & PA 10th Grade	
9	Sun, Zhipeng	10	FOXCH	1769	1763	W41	L15	W46	W40	W18	4		9th Place & PA 10th Grade	
10	Bishop, Maurice Norman	9		1705	1711	W48	D25	W11	L2	W30	3½		10th Place	
11	Guerrieri, Luis F	10	MONRO	1598	1615	W53	D4	L10	W35	W26	3½		10th Place Medal	
12	Harutyunyan, Davit A	12	STCOL	1594	1646	W42	L2	W33	D19	W25	3½		10th Place Medal	
13	Goldenberg, Dmitry	11	PNNBR	1718	1754	W36	W7	W19	L1	L8	3		PA 11th Grade Co-Champion	
14	Cheung, Jack	9	MONRO	1584	1639	W49	W22	D2	D6	L7	3			
15	Fuki, Igar	12	LWRMR	1571	1603	W50	W9	D5	D20	L6	3			
16	Opaska, Michael P	10		1628	1668	W47	W8	D6	L4	D19	3			
17	Benton, Adrian	10	PNNBR	1494	1550	L7	W55	W22	L3	W34	3		1st Place (U1400)	
18	Rogers, Benjamin	12	WYSHS	1451	1475	W51	L6	W36	W28	L9	3			
19	Papariella, Justin J	10	FOXCH	2031	2006	W31	W37	L13	D12	D16	3			
20	Tevet, Dan	12	WYSHS	1676	1655	W38	W54	D26	D15	L3	3			
21	Lesieutre, John D	9	STCOL	1301	1364	L5	W51	L3	W49	W40	3		1st Place (U1400) Medal	
22	Mc Dermott, Brian	12	STJOE	1737	1711	W30	L14	L17	W36	W38	3			
23	Bare, Trevor S	11	LANMN	1375	1399	L2	D27	D41	W47	W33	3		PA 11th Grade Co-Champion	

24	Thompson, Zachary	9	LWRMR	1340	1381	L34	L39	W42	W51	W37	3	1st Place (U1400) Medal
25	Read, Jacob D	9	MASTM	1497	1500	W32	D10	L4	W45	L12	2½	
26	Weissman, Ross E	10	LWRMR	1418	1498	W39	W34	D20	L5	L11	2½	
27	Pekar, David M	11	STJOE	1212	1280	L3	D23	D45	W39	D31	2½	
28	Harrison, Patrick W	9	FOXCH	1679	1656	W52	W40	L1	L18	D29	2½	
29	Sehic, Emir	12	WYSHS	1304	1355	L6	W49	L7	W50	D28	2½	
30	Berthoud, Kevin F	9		1478	1501	L22	W50	W39	D34	L10	2½	
31	Valerstein, Roman	10		1303/24	1312	L19	W48	L8	W53	D27	2½	
32	Ronis, Zakary K	12	LWRMR	995/04	1130/09	L25	L38	W52	D48	W45	2½	1st Place (Unrated)
33	Renshaw, David W	9		1765/08	1645/13	W44	L5	L12	W46	L23	2	2nd Place (Unrated)
34	Guber, Michael	9	MASTM	1764	1713	W24	L26	D35	D30	L17	2	
35	Chojecki, Alek	12	STJOE	1403	1408	L1	W42	D34	L11	D41	2	
36	Chanyshev, Oleg A	10	MASTM	1098/24	1154	L13	W43	L18	L22	W51	2	
37	Gayo, Abraham T	11		1677	1648	W55	L19	W38	L7	L24	2	
38	Horst, Matt T	11	LANMN	1238	1244	L20	W32	L37	W54	L22	2	
39	Keir, Clayton C	11		1680	1622	L26	W24	L30	L27	W53	2	
40	Wasiolak, Rory E	9		1558	1521	W45	L28	W54	L9	L21	2	
41	Green, Kevin R	10	TALLD	1354	1338	L9	L45	D23	W52	D35	2	
42	Stevens, Nathaniel	9	MASTM	1038	1066	L12	L35	L24	B-	W49	2	
43	Blank, John E	11	LANMN	1281/20	1249/25	L8	L36	L49	W55	W50	2	
44	Mains, Michael J	12		1576	1566	L33	W52	W47	F-	U-	2	
45	Yoder, Jesse	11	LANMN	1131/04	1166/09	L40	W41	D27	L25	L32	1½	
46	Witushynsky, Timothy C	12		1326	1302	L4	W53	L9	L33	D47	1½	
47	Dodge, Jonathan E	12	WYSHS	830/11	851/15	L16	B-	L44	L23	D46	1½	
48	Derksen, Jeremiah J	11	LANMN	1164/18	1127/23	L10	L31	L50	D32	W54	1½	
49	Hsiao, Christopher	10		1533/03	1273/08	L14	L29	W43	L21	L42	1	
50	Hsiao, Thomas	7		1194/03	1153/08	L15	L30	W48	L29	L43	1	
51	Son, JiWon	11	LANMN	Unr	1022/05	L18	L21	W55	L24	L36	1	
52	Stoltzfus, E Zachary	11	LANMN	1238/16	1188/20	L28	L44	L32	L41	B-	1	
53	Washington, Daniel	10		844/19	836/23	L11	L46	B-	L31	L39	1	
54	Porvaznik, Tom A	11	STJOE	278/14	277/18	B-	L20	L40	L38	L48	1	
55	Bildersee, Adam	9	LWRMR	1005/09	957/13	L37	L17	L51	L43	H-	½	

Teams

Score	Team Code	Team Name	Team Type	Prize
16	MASTM	Julia R Masterman School	School	1st Place (School)
11	LWRMR	Lower Merion High School	School	2nd Place (School)
10	WYSHS	Wyoming Seminary High School	School	3rd Place (School)
9½	FOXCH	Fox Chapel Area High School	School	4th Place (School)
8½	STJOE	St Joseph's Preparatory School	School	5th Place (School)
8½	LANMN	Lancaster Mennonite High School	School	
6½	MONRO	Monroeville Chess Club	Club	
6½	STCOL	State College Area High School	School	
6½	TALLD	Taylor Allerdice High School	School	
6	PNNBR	Pennsbury High School	School	

K to 8 Open
March 9 & 10, 2002

Players

#	Name	Grade	Team	Pre Rat	Post Rat	Rd 1	Rd 2	Rd 3	Rd 4	Rd 5	Score	Prize
1	Schneider, Kurt	8		1959	1965	W16	W22	W3	W10	W2	5	1st Place & PA K-8
2	Heimann, Mark A	3	RROOK	1608	1629	W29	W6	W4	W7	L1	4	2nd Place
3	Jampole, Ezra A	8	PGHDR	1551	1560	W23	W5	L1	W24	W8	4	3rd Place & PA 8th Grade
4	Madorsky, Andrew	8		1499	1501	W27	W12	L2	W20	W14	4	4th Place & PA 8th Grade
5	Voorhees, Kurtis T	8	MASTM	1121	1233	W34	L3	W21	W22	W13	4	5th Place & PA 8th Grade
6	Augenbraun, Eric J	8	MASTM	1349	1387	W21	L2	W23	W25	W10	4	6th Place & PA 8th Grade
7	Sam, Erick J	8		1381	1418	W17	W18	W11	L2	D9	3½	7th Place
8	Mc Laughlin, Erica C	7		1269	1301	W24	W28	D15	W19	L3	3½	8th Place & PA 7th Grade
9	Swed, David P	8	PGHDR	1288	1341	W30	L10	W27	W11	D7	3½	9th Place
10	Joseph, Bryan G	6	MONRO	1476	1474	X-	W9	W13	L1	L6	3	10th Place
11	Caligaris, Gage R	8		1726	1686	W25	W14	L7	L9	W19	3	
12	Krut, Andrew T	8	MONRO	1106	1130	W20	L4	W17	L13	W23	3	
13	Lakata, Elizabeth M	7		1372	1348	W31	W26	L10	W12	L5	3	
14	Peterman, M Neil	8	MASTM	1209	1249	W36	L11	W28	W15	L4	3	
15	Friederich, Seth M	8		1523	1479	D19	W35	D8	L14	W25	3	
16	Smyth, John H	7	MASTM	1164	1158	L1	L19	W36	W28	W20	3	
17	Dolan, Sean P	8	MASTM	940	985	L7	W34	L12	W33	W26	3	
18	Dorohovich, John M Jr	8	PGHDR	1113	1098	W33	L7	L20	W21	W27	3	
19	Corey, Tamara H	8		1089	1186	D15	W16	W22	L8	L11	2½	
20	Soni, Prerna	7	FRETZ	668	804	L12	W31	W18	L4	L16	2	1st Place (U800)
21	Regan, Sean P	7	RROOK	853/09	905/14	L6	W29	L5	L18	W30	2	
22	Waruszewski, Bob C	7	RROOK	1257	1220	W32	L1	L19	L5	W24	2	
23	Santistevan, Mark	8	RROOK	1011/23	994	L3	W30	L6	X-	L12	2	
24	Sneff-Nanni, Jasper	7	MASTM	811	895	L8	W33	W26	L3	L22	2	
25	Blumer, Joel T	8	RROOK	1054	1053	L11	W32	W35	L6	L15	2	
26	Lederman, Mathew J	8	MONRO	1115	1054	W37	L13	L24	W31	L17	2	
27	Tata, Scott	8	MONRO	992/11	979/16	L4	W36	L9	W30	L18	2	
28	Anthony, Aaron C	7	WYSLs	877/08	894/12	X-	L8	L14	L16	W31	2	
29	Weiss, Max	7	MASTM	1058	999	L2	L21	L30	W36	W32	2	
30	Keir, Graham C	8		679	697	L9	L23	W29	L27	L21	1	
31	Kyle, Juan G	7	RROOK	885	823	L13	L20	W34	L26	L28	1	
32	Klingensmith, Nicholas	7	PGHDR	873	814	L22	L25	L33	W34	L29	1	
33	Anderson, Andrew	7		794/04	773/08	L18	L24	W32	L17	U-	1	1st Place (Unrated)
34	Church, Michael R	8	FRETZ	567	576	L5	L17	L31	L32	W36	1	
35	Pesta, Adam J	7	WYSLs	264/05	264/07	B-	L15	L25	F-	U-	1	

36	Artman, Stephen J	7	724/12	663/17	L14	L27	L16	L29	L34	0
37	Lesieutre, William A	7	646/25	639	L26	U-	U-	U-	U-	0

Teams

Score	Team Code	Team Name	Team Type	Prize
14	MASTM	Julia R Masterman School	School	1st Place (School)
11½	PGHDR	Pittsburgh Youth Chess Dragons	Club	1st Place (Club)
10	RROOK	Razing Rooks	Club	2nd Place (Club)
10	MONRO	Monroeville Chess Club	Club	
3	FRETZ	Fretz Junior High School	School	2nd Place (School)
3	WYSLS	Wyoming Seminary Lower School	School	3rd Place (School)

K to 3 Open
March 9 & 10, 2002

Players

#	Name	Grade	Team	Pre Rat	Post Rat	Rd 1	Rd 2	Rd 3	Rd 4	Rd 5	Score	Prize
1	Gough, Randall W	2	PGHDR	1104	1156	W25	W22	W24	W11	W3	5	1st Place & PA Primary
2	Stern, Scott W	3	PGHDR	1202	1203	W21	W14	D6	W16	W7	4½	2nd Place & PA 3rd Grade
3	Ignaczak, Mark	3		877/15	959/20	W31	W34	W8	W9	L1	4	3rd Place
4	Brady, Matthew D	3	PGHDR	1015	1019	W33	L6	W25	W22	W11	4	4th Place
5	Stern, Eric W	3	PGHDR	1046	1041	W32	L12	W34	W18	W13	4	5th Place
6	Levin, Michael	3		844	977	W15	W4	D2	L7	W26	3½	6th Place
7	Walsh, Kathryn E	2		555	853	D9	W26	W17	W6	L2	3½	7th Place & PA 2nd Grade
8	Nimgaonkar, Vivek U	2	PGHDR	823	892	W35	W16	L3	W17	D10	3½	8th Place & PA 2nd Grade
9	Uselman, Jeffrey R Jr	3	PGHDR	872	888	D7	W33	W18	L3	W19	3½	9th Place
10	Hudak, Marko	3	PGHDR	1010/16	988/21	W29	L24	W27	W12	D8	3½	10th Place
11	Lakata, David A	1		710	828	W37	W13	W12	L1	L4	3	PA 1st Grade Co-Champion
12	Loudon, Wesley	1		903	913	W38	W5	L11	L10	W23	3	PA 1st Grade Co-Champion
13	Feffer, Danielle N	2	PGHDR	960	930	W30	L11	W29	W24	L5	3	
14	Callipare, Antonio J	2	STGER	697/12	741/17	W20	L2	L23	W28	W24	3	
15	Chaverin, Samuel	0	RROOK	724/04	744/09	L6	L23	W37	W27	W22	3	PA Kindergarden Champion
16	Polka, Nicholas G	2	STGER	853/16	839/21	W23	L8	W28	L2	D21	2½	
17	Miller, Maxwell	3		826/23	803	W28	D18	L7	L8	W25	2½	
18	Stein, Ethan M	0		666/25	762	W26	D17	L9	L5	W31	2½	1st Place (U600)
19	Kyle, Sam	1	RROOK	356/04	513/09	L22	D20	W36	W23	L9	2½	2nd Place (Unrated)
20	Freiberg, David	3		408/04	491/09	L14	D19	W38	L26	W32	2½	1st Place (U600) Medal
21	Morris, Marcus R	1		571/06	583/11	L2	L27	W33	W37	D16	2½	2nd Place (Unrated) Medal
22	Brody, Zachary A	3		810/25	779	W19	L1	W30	L4	L15	2	
23	Lednev, Alex	2	PGHDR	972	891	L16	W15	W14	L19	L12	2	
24	Regan, Peter J	3	RROOK	784/13	774/18	W36	W10	L1	L13	L14	2	
25	Chaverin, Nathaniel	2	RROOK	694/16	703/21	L1	W31	L4	W30	L17	2	
26	Rajgopal, Prem	1	PGHDR	1011	922	L18	L7	W35	W20	L6	2	
27	Stiely, Shane	3	SHAMO	494/05	477/10	L34	W21	L10	L15	W35	2	
28	Spock, Jamie Lee	3	SHAMO	164/08	278/13	L17	W37	L16	L14	W33	2	
29	Solar, Randilynn	3	STGER	596	563	L10	W35	L13	L33	W34	2	
30	Oplinger, William N	1	STGER	490/04	510/09	L13	W32	L22	L25	W38	2	
31	Moore, Gabriel H	2	MOORE	989/04	711/09	L3	L25	D32	W34	L18	1½	
32	James, Andre	3	Unr		383/05	L5	L30	D31	W38	L20	1½	
33	Kanwar, Gurtej	3	BRDFK	717/04	552/09	L4	L9	L21	W29	L28	1	
34	Rhinehart, Tessa	1	BRDFK	100/08	188/13	W27	L3	L5	L31	L29	1	
35	Borland, Christopher J	1	BRDFK	205/04	235/09	L8	L29	L26	W36	L27	1	
36	Moore, Isaac R	1	MOORE	373/03	207/08	L24	D38	L19	L35	D37	1	
37	Kanwar, Satjiv S	0	BRDFK	Unr	100/05	L11	L28	L15	L21	D36	½	
38	Allison, Emily	1	BRDFK	291/05	208/10	L12	D36	L20	L32	L30	½	

Teams

Score	Team Code	Team Name	Team Type	Prize
17½	PGHDR	Pittsburgh Youth Chess Dragons	Club	1st Place (Club)
9½	RROOK	Razing Rooks	Club	
9½	STGER	St Gertrude School	School	1st Place (School)
4	SHAMO	Shamokin Area Elementary	School	
3½	BRDFK	Bradford Fighting Knights	Club	
2½	MOORE	Albert J Moore Chess Club	Club	

More scholastic sections next issue.

PSCF G-30 CHAMPIONSHIP
2002 PA Game/30 Tmnt
6/8- 6/9 2002

OPEN SECTION:

1	Sherzer, GM Alex	2564	W-6	W-4	L-3	W11	W-7	4.0
2	Dubeck, Leroy	2294	D-7	W11	D-4	D-6	D-3	3.0
3	Belorusev, Mickhail	2290	W-8	W-5	W-1	W-7	D-2	4.5
4	Baczynskyj, Boris	2287	W-9	L-1	D-2	W-8	W-6	3.5
5	Bradlow, Harvey	2200	W10	L-3	L-7	U--	U--	1.0
6	Yang, Ruixin	2132	L-1	W-9	W-8	D-2	L-4	2.5
7	Post, Evan	2084	D-2	W12	W-5	L-3	L-1	2.5

8	Fisher, Mark	1878	L-3	W10	L-6	L-4	L13	1.0
9	Abner, Joseph	1462	L-4	L-6	W10	W12	W11	3.0
10	Tippett, Dave	1441	L-5	L-8	L-9	L13	L12	0.0
11	Austin, Fred	1433	B--	L-2	W12	L-1	L-9	2.0
12	Shaw, Mona	1228	H--	L-7	L11	L-9	W10	1.5
13	Yang, Weiyu	1450	U--	U--	U--	W10	W-8	2.0

RESERVE SECTION:

1	Abner, Joseph	1462	W-3	W-2	W-4	W-3	L-2	4.0
2	Cooper, Anthony	1452	D-4	L-1	W-3	W-4	W-1	3.5
3	DiNenna, Mario	unr.	L-1	L-4	L-2	L-1	W-4	1.0
4	Riddle, Ira Lee	1308	D-2	W-3	L-1	L-2	L-3	1.5

PRESIDENT'S MESSAGE**WANTED: MASOCHISTS** by Dr. Ira Lee Riddle

There is a nice custom, to which I have sometimes been a part myself, that the best way to get someone to become an officer is to wait until they are not present at a meeting and then to nominate and elect them on the spot. I trust this will not be happening this year at our annual business meeting in State College. In fact, I am praying that this will not be the case, as there is a good chance I will not be there myself!

In case you're not sure where this is leading, I do not intend to continue as PSCF President after our business meetings in August. I do not intend to exit the organization in any sense of the matter, but I just do not have the time, temperament, time, and drive to continue. I've been president for 24 years, which is longer than some senators have served in D.C.! We are on our fourth scholastic coordinator, second treasurer, several vice presidents, and still the first secretary who was willing to trust me when I started in 1978. In fact, Bobby Dudley even nominated me for the position of president (Yes, I was absent from that meeting!), and agreed to become secretary so that the western part of the Commonwealth would have representation. He is still with us as of this writing.

In 1978, when I took over from Rick Jones (I met his wife in April while judging the Del Val Science Fairs), there were 6 members on the mailing list, and one of these was a life member. We now have over 700 members, and our scholastic events have grown from Fairmount Park's hall to Waynesboro and Chambersburg H.S. to Shippensburg Univ to Lebanon Valley College to Bloomsburg (with one side trip to East Stroudsburg Univ).

The organization is in good shape, both numerically and financially. I trust the next set of officers will keep it that way. It will take some time to transfer monies around to the new officers, but that will be done as quickly as possible. I will continue running the current postal tournaments if desired.

On a personal note, I may finally get enough time to do some reading and watching of DVDs. I can recommend a new book, "Change of Heart," very enthusiastically! The protagonist reminds me of 007, but with a heart and a very good sense of responsibility. Find it and enjoy it.

Hope to see you at some of my tournaments.
Ira Lee Riddle

**PSCF STATE TOURNAMENT
RESCHEDULED!**

**Look for an announcement of the new location
and dates in the next *Pennswoodpusher*.**

**Watch for the PSCF State Junior Championships
& PA State Bughouse Championship to be held in
Pittsburgh this Fall.**

PSCF GOVERNANCE**PSCF Webpage address:** <http://www.pscfchess.org/>

Webmaster: Tom Martinak; martinak_tom_m@hotmail.com

PSCF OFFICERS:

President: Dr. Ira Lee Riddle; 400 Newtown Road; Warminster 18974; 215-674-9049; iralee@aol.com

Vice-President: Keith Kuhn; 1009 Shaw Ave.; Lewistown 17044; kkuhn@acsworld.com

Vice-President: Tom Magar; 1120 Jacks Run Rd; N Versailles 15137-2726; thomasmagar@hotmail.com

Secretary: Bob Dudley; 107 Crosstree Rd.; Moon Township 15108; bgdudley@compuserve.com

Treasurer: Stan Booz, CPA; 252 W Swamp Rd, Suite 39; Doylestown 18901; 215-345-6651; stanbooz@comcast.net

Scholastic: Steve McLaughlin

Western PA Schol. Coordinator: Bob Ferguson; 140 School St.; Bradford 16701; 814-368-4974; amchess@amchess.org

PSCF Historian: Neil Brennen; chessnews@mindspring.com

PSCF Life Members:

Edward A. Belcher, Howard Bogus, Stanley N. Booz, Greg Borek, Al Breaux, Jr., John Caliguire, Will Campion, Natal Carabello, Steve Coladonato, Donald H. Conner, Mike Cox, Frank Cunliffe, Leroy Dubeck, Bob Dudley, Alex Dunne, Robert Ferguson, Ryan Ferguson, John Gibbons, Phillip Holmes, James Joline, Joe Johnson, Allan Messinger, Glenn R. Mohler, Randy Moyer, Ross Nickel, Ira Lee Riddle, Stanley Robertson, Michael Shahade, Richard Stoy, Mike Styler

USCF Delegates:

Dan Heisman, Alex Dunne, Ira Lee Riddle, Ed Formanek, Eric Johnson;

USCF Alternate Delegates:

Bob Dudley, Boris Baczynskj, Tom Martinak, Michael Cox, Norman Rogers, Steve Shutt, Larry Pugh, Tom Magar, Keith Kuhn, Bob Ferguson, Greg Vaserstein, Kurt Schneider, Robert Ross, Al Breaux Jr., Ed McKenney, George Trent

The Pennswoodpusher is the official publication of the Pennsylvania State Chess Federation. Editor is Neil Brennen; 439 East Marshall Street, Apartment 4; Norristown, PA 19401
chessnews@mindspring.com

PSCF Dues are \$5 for students/adults/clubs, \$100 for Life memberships.

Material in this publication may be reprinted by other magazines as long as credit is given to both the author and to The Pennswoodpusher. The PSCF is a 501(c)(3) non-profit organization, and donations are deductible to the extent allowed by law.

The PENNSWOODPUSHER is published quarterly by the Pennsylvania State Chess Federation. Advertising rates available on request.

POSTAL POTPURRI

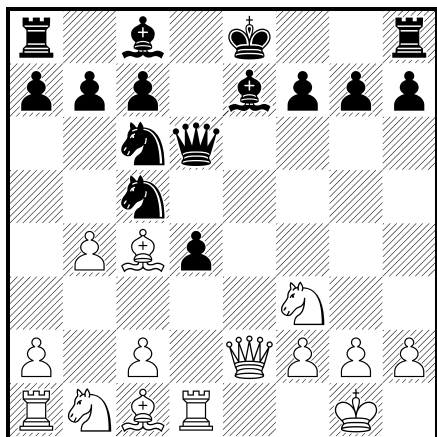
by John Caliguire, PSCF Postal Champion

Welcome postal and e-mail chessplayers. This is a column dedicated to anything to do with postal and e-mail chess. I want to hear from all of you postal/e-mail players. You tell me what you would like to see as this is our column and I need your input! Be it an opening line, middle or endgame discussions ,your favorite games etc .Let me know by writing or e-mailing me at John Caliguire 110 N. Main St. Punxsutawney, Pa. 15767-1216 or jonaliguire@penn.com . I look forward to hearing from all of you.

I start it off by giving you a game of mine. I'm using it as a tribute to a great player who has passed on, Edward Laird. It's a see-saw slugfest using a little footnote in a subline of the Two Knights Defense. White looks like he is going to run Black over but a few indifferent moves and the safe White king end up more exposed than his opponent's. The game was played in the Correspondence Chess League of America's 15th Championship where I started out ranked 9th of the 11 players and was lucky enough to tie for 2nd. 10-1-1999 to 5-12-2000.

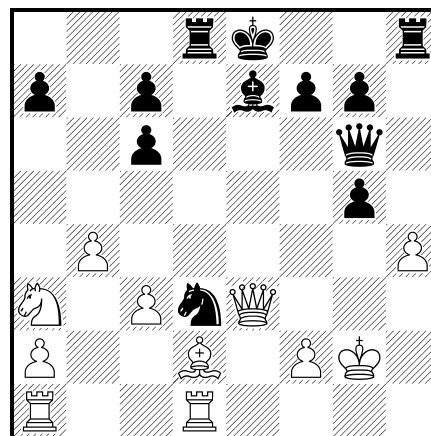
Edward H. Laird Jr.(2279) - John Caliguire (2135) [C55] CCLA Championship

1.e4 e5 2.Nf3 Nc6 3.d4 Starts out a Scotch. **exd4 4.Bc4** A gambit! **Nf6** It's prudent to decline as we are already behind in development! **5.e5** Modern line of the 2 Kt's 5.c3 is an aggressive alternative. ...**Ne4** There are two more popular moves here ...d5 and ...Ng4 but the path is less known here. My favorite kind of trails! **6.Qe2** Another side line. The mainline is Bd5. ...**Nc5 7.0-0** We are now in new territory. I wanted to try the suggestion by Estrin here which went 7.Ng5 Ne6 8.f4 and try 8..Nxf7 9.fxf7 10.f5 Bf8 11.fxe5+ dxe 12.Qh5+ Kg8 13.Bd3 g6 14.Bxg6 hfg6 15.Qxg6+ Kh8 16.Qh5+ Kg8 17.Bh6 and White has the better of it. ...**Be7 8.Rd1** During this stage I felt like I was about to get washed away in the coming storm! **d5** Must get elbow room. **9.exd6 Qxd6 10.b4?! 10.c3!** is stronger.



10...d3! A line-clearing counter punch. **11.Qe1 Qg6** Must be tenacious. Be passive here and its all over **12.c3 Bg4! 13.Bd5! d2 14.Bxd2 Nd3 15.Qe3 Rd8 16.Be4 Bf5 17.Bxc6+ bxc6 18.Na3**

Things are getting very uncoordinated. **Be4 19.Ng5 Bxg2! 20.Kxg2 h6 21.h4 hfg5** Amazing how the roles have reversed. Now it is White's king on the run.



22.hxg5 Rd5! 23.Rh1 Rxg5+ 24.Qxg5 Bxg5 25.Rxh8+ Kd7 26.Bxg5 Qxg5+ 27.Kf3 Qd2 Weak spots all over: c3,b2and f2. Major material loss can't be stopped. **28.Rf1 Ne1+! 0-1**
Thank you Ed, and goodbye.

Now I want to hear from the rest of you! (So do we! -Editor)

Current PA Postal Tournaments T.D.: DR. IRA LEE RIDDLE

Section 1997PA-F						
Mike Holsinger	1742	xxx	F-F	F-F	U-U	0.0
John Caliguire	1785	W-W	xxx	---	U-U	2.0
Ga Johnson Jr.	1959	W-W	---	xxx	U-U	2.0
G. J. Stueber	2104	U-U	U-U	U-U	xxx	0.0

Section 1998PA-F						
John Caliguire	2003	xxx	L--	D-D	1.0	
G Johnson	2107	W--	xxx	F-F	1.0	
A Mathiopoulos	2078	D-D	X-X	xxx	3.0	

Section 1999PA-1						
Gardn Johnson	2107	xxx	W-W	---	W-W	
Larry Cesare	UNR	L-L	xxx	L-L	W-W	
John Caliguire	2003	---	W-W	xxx	W-W	
Al Breaux, Jr	1609	L-L	L-L	L-L	xxx	

Section 1999PA-3						
Wm. Nast, Jr.	1676	xxx	L-D	---	L-L	
Davi Williams	1684	W-D	xxx	W-W	L-L	
JameSanderlin	1426	---	L-L	xxx	L-L	
G JOHNSON	2107	W-W	W-W	W-W	xxx	

Section 2000PA-F						
John Caliguire	2003	xxx	L-x	W-W	W-W	4.0
Gar Johnson Jr	2107	W-x	xxx	W-W	W-W	5.0
Mike Holsinger	1803	L-L	L-L	xxx	x-x	0.0
Eric Crumb	UNR	L-L	L-L	x-x	xxx	0.0

Section 2001PA-1						
Greg Borek	1983	---	L-L	W-W	x-x	2.0
John Caliguire	1870	W-W	---	W-W	L-x	4.0
Jeremy Domingo	UNR	L-L	L-L	---	L-L	0.0
Gardner Johnson	2107	x-x	W-x	W-W	---	3.0

Section 2001PA-2						
Greg Borek	1983	---	x-x	L-L	x-x	0.0
Gardner Johnson	2107	x-x	---	x-x	x-x	0.0
Brad Parker	UNR	W-W	x-x	---	L-x	2.0
Luis R. Gilces	UNR	x-x	x-x	W-x	---	1.0

WHERE TO PLAY CHESS IN PA

ANY CORRECTIONS/ADDITIONS/DELETIONS GRATEFULLY ACCEPTED

ALLENTOWN:

(1) Center City Chess Club; St. Luke's Lutheran Church, 417 N 7th St; Sat, 12:00-4:00

(2) A-B Chess Club; St. Timothy's Lutheran Church, 130 S Ott St; Fri, 8-12 p.m.

BLOOMSBURG:

Bob Ross (W) 717-389-4337, (H) 717-784-8571

BRADFORD:

U P-Brad Commons Bldg, Wed, 7-11 p.m.

BRYN ATHEN:

College of New Church CC; Pendleton Hall, Theological Lounge, Tues, 7:30, Glenn Frazier 215-572-1916

CANONSBURG:

Twp. Lib., 610 E McMurray Rd, Mon, 6:30-8:30, 724-941-9430

CHAMBERSBURG:

C-burg Chessman; Thurs, 7-10 p.m., 600 Miller St, 717-263-8389

CHELTENHAM:

Rowland Comm. Ctr, Elm St., Thurs, 6-10 p.m.

CLEARFIELD:

Clearfield CC; Shaw Lib, Tues and Thurs, 6-9 p.m., Sat 9-noon, Ron Williams 814-765-7788

COATESVILLE:

Coatesville Cultural Society, 258 E Lincoln Hwy, Bob Jones 610-384-1790

DUBOIS:

Dubois CC; PSU Campus, 1st and 3rd Thurs

ERIE:

Erie CC; Zurn Science Bldg, W 7th St between Peach and Sassafra, Room 341, Fri, 6 p.m., James Walczak 814-870-7763

FOLSOM:

Comic Universe CC; 446 MacDade Blvd, Tues, 7-11

GLADWYNE:

Main Line CC; Waverly Hts. Ret. Comm. Game Room, 1400 Waverly Rd, Tues, 7, Dan Heisman 610-649-0750

GREENSBURG:

Courthouse Square, Wed, 6-11, 724-836-5625

GREENVILLE:

Howard Miller Ctr, Thiel Coll., Mon, 7-10

HATBORO:

Chaturanga CC; Trinity Orthodox Pres. Chur., County Line Rd. W of Blair Mill Rd., Thurs, 8

HARLIGH:

Lampost Rest/Lounge, Rte 940, Fri, 7:30-11:30, 570-454-0000, contact: Bob Brubaker 570-384-4122

HARRISBURG:

Harrisburg East Shore Chess Club; Messiah Luth Ch, 901 N 6th St, Tues, 6-9, Sat 9-noon, 717-234-4921 or 717-236-6541 (Also see West Shore)

HAWLEY:

Settler's Inn Main St., Wed, 6

HAZELTON:

Greater Hazelton CC; Hazelton Gen. Hosp., 700 E. Broad St, Fri, 7-mdnt.

HUNTINGDON VALLEY:

Hunt. Valley Chess Society Juniors; Lower Moreland Library, Red Lion Road, 1st, 3rd, and 5th Sat, 2-4

JOHNSTOWN:

Senior Activities Ctr, 2nd Floor, Bedford and Main Sts, Tues, 7:30, 814-467-9759

LANCASTER:

Red Rose Chess Club; J.C.C., 2120 Oregon Pike, Thurs, 7-11 p.m.

LANSDALE:

North Penn CC; St. John's UCC Church, Main and Richardson Sts., Thurs and Fri, 7-1 a.m., 215-699-8418

MANSFIELD:

Wellsboro-Mansfield CC; St. James Epis. Church, Wellsboro and James St, Thurs, 7-11, Don Thompson 717-376-2452

MONROEVILLE:

Monroeville Chess Club; Wed, 6:30-8:30, Delbert Tyler 412-824-5015

MURRYSVILLE:

1st Pres. Church, 3202 N Hills Rd, Wed, 7-11, Jay Griffin 724-325-2484

NEW CASTLE:

Lawrence County CC; Trinity Epis. Church, N. Mill St. at Falls Ave, Thurs, 6:30-9

NEWTOWN SQUARE:

Marple-Newtown Scholastic CC; Robert Gauntlett Comm Ctr, Rte 3 and Media Line Rds, Tues, 6:30-8:30

PHILADELPHIA:

(1) FMCC; 1420 Walnut St, Suite 460, noon-11 daily

(2) U of P CC; Chats Cafeteria, 3800 Locust, Wed, 8, 215-898-2399

(3) Masterminds CC; Anderson Hall, Temple U., Rm 906, Mon, 6-10, Ernest Moore Jr. 215-235-1696

PITTSBURGH:

(1) U of Pitt CC; Lowel Level, Wm. Pitt Union Bldg, Tues & Thurs, 7-11 p.m., Tom Martinak 412-681-7590

(2) PGH CC; Wightman School Bldg., 5604 Solway St, Wed, 1-10, Sat, 12-10:30, 412-421-1881

(3) Crafton Public Library, 140 Bradford Ave, 1st/3rd Sat., 9-noon, 412-922-4234

(4) East Lib. Library, 5920 Ralph Mull Mall, Tues, 3:30-6:30, 412-661-8412

(5) Hill Branch Library, 419 Dinwiddie St; Mon & Thurs, 4-8, Sat, 11-4:30, 412-361-6170

RIDLEY TOWNSHIP:

Tri-State Chess Club; Times Square Rest, McDade and Rte 420, Holmes, Tom Pike 610-328-5977

ROSLYN:

2812 Hammond Place, Steve McLaughlin 215-784-5938

SHAMOKIN:

Shamokin CC; Burger King, Rte 61, Mon, 7:30

STATE COLLEGE:

PSU CC; A.S.I. Bldg, Room 16, Thurs, 6:30 p.m.

STROUDSBURG:

Stroudsburg Chess Club; YMCA, Main St., Thurs, 7-11, Eric Mark 570-476-8939 or Jim Walsh 717-992-5475

SUNBURY:

Susq. Val. CC; Oaklyn Bapt. Ch., Rte 61, Sat, 6 p.m., 570-863-2383

UNIONTOWN:

K of C Hall, Old Rte 119, 724-438-9250

WEST CHESTER:

(1) West Chester CC; United Meth Ch., High and Barnard Sts, Wed, 7

(2) West Chester Univ. CC; Sykes Student Bldg, Rm 112, Thurs, 11-2

WEST SHORE (Harrisburg):

West Shore Chess Club; Cedar Cliff HS Library, Mon, 7-10, Gerald Dubs 717-975-5589

WILKES-BARRE:

W-B CC; Brd Rm, Oster. Lib., Wed, 6-9, George Trent 570-740-7662

WILLIAMSPORT:

(1) Williamsport Chess Soc.; Wertz Stud. Ctr., Lycoming Coll, Tues

(2) Comic Castle CC; 17 W 4th St, Wed, 6-9, 570-322-8763

YORK:

(1) York Twp. Comm Ctr, 2500 S George St, Wed, 6:30-10, 717-845-9368

(2) York Youth CC; Grace Brethren Ch, Newberry & Parkway, Wed, 2-5:30 or Light of Life Perf. Arts Ctr, 41 Cherry St, Seven Valleys, Fri, 6-9:30, 717-852-8434