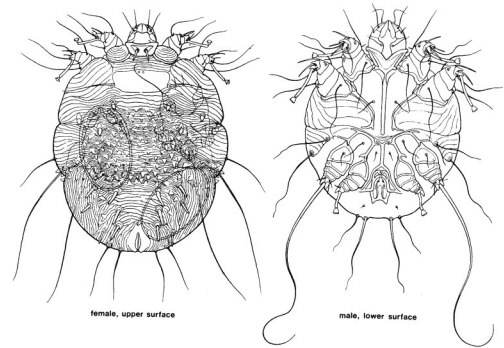
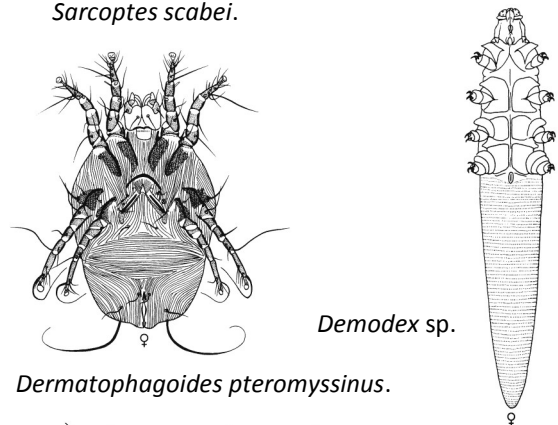


## Mites of Medical Importance

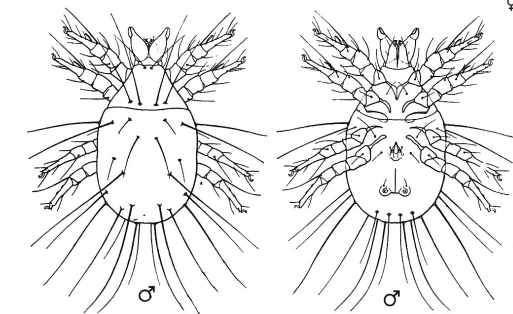
- 1 Stigmata present as one lateral pair between bases of legs II and IV.....2
  - Stigmata absent posterior to coxae II.....6
- 2 Legs short and stubby, anterior two pairs ending in discs, posterior two pairs ending in long bristles (Sarcoptidae).....*Sarcoptes scabiei*
  - Legs normal and all similar in structure.....3
- 3 Body with two pairs of long posterior marginal setae (Pyroglyphidae).....*Dermatophagoides* sp.
  - Body with four pairs of long posterior marginal setae (Acaridae).....*Tyrophagus* sp.
- 4 Body unusually elongate, with worm-like annulations, asetose (Demodicidae).....*Demodex* sp.
  - Body not unusually elongate, setose.....5
- 5 Capitulum and palps conspicuous; body with feathery setae (parasitic larval stage – three leg pairs) .....*Trombiculidae* sp.
  - Capitulum and palps inconspicuous; body with simple, non-feathery setae; not parasitic on vertebrates; females usually gravid (Pyemotidae)...*Pyemotes tritici*
- 6 Chelicerae long and whip-like, tapering apically, chelae at tips absent or very small (Dermanyssidae).....7
  - Chelicerae not long and whip-like, shorter and stronger, chelae at tips blade-like, with or without teeth.....8
  - Body dorsally with one shield; anal shield not egg-



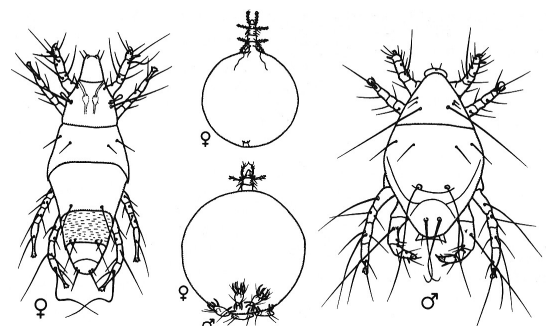
*Sarcoptes scabiei.*



*Dermatophagoides pteromyssinus.*



*Tyrophagus putrescentiae.*



*Pyemotes tritici.*

shaped, with anal opening at posterior end  
 .....*Dermanyssus gallinae*

8 Dorsal shield clearly not covering dorsal body surface; genitoventral shield narrowed posteriorly; chelicerae with toothless chelae (Macronyssidae)  
 .....9

- Dorsal shield covering dorsal body surface; genito-ventral shield not narrowed posteriorly; chelicerae usually with tooth chelae (Laelapidae)  
 .....11

9 Dorsal shield narrow and tapering posteriorly, with long setae.....*Ornithonyssus bacoti*

- Dorsal shield broad, with short setae.....10

10 Sternal shield with two pairs of setae  
 .....*Ornithonyssus sylviarum*

- Sternal shield with three pairs of setae  
 .....*Ornithonyssus bursa*

11 Genitoventral shield not widened posteriorly, with one pair of setae.....*Hirstionyssus isabellinus*

- Genitoventral shield widened posteriorly, with more than one pair of setae.....12

12 Body densely setose.....13

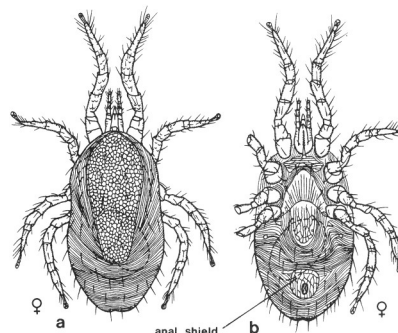
- Body with few setae, setae arranged in transverse rows .....14

13 Genitoventral shield with pear-shaped outline  
 .....*Haemogamasus pontiger*

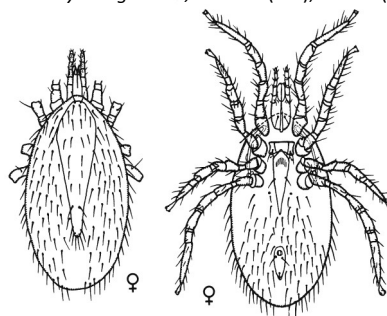
- Genitoventral shield with large subcircular outline  
 .....*Eulaelaps stabularis*

14 Genitoventral shield with concave posterior margin, surrounding anterior part of anal shield  
 .....*Laelaps echidninus*

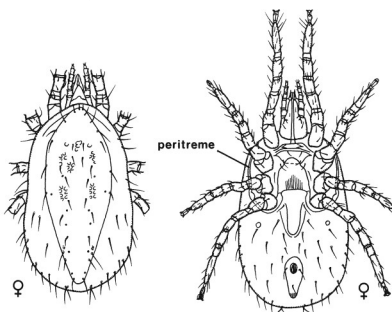
- Genitoventral shield with convex posterior margin, not surrounding anterior part of anal shield  
 .....*Laelaps nuttalli*



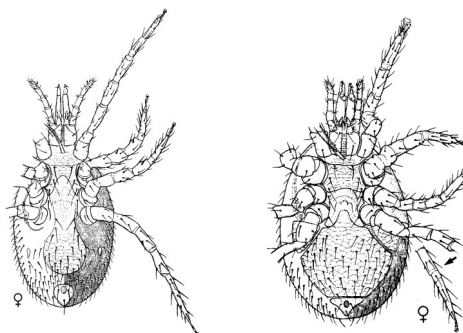
*Dermanyssus gallinae*, dorsum (left), venter (right).



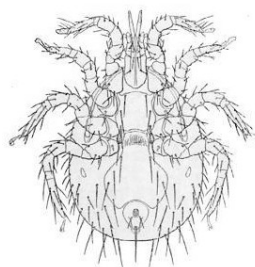
*Ornithonyssus bacoti* , dorsum (left), venter (right).



*Ornithonyssus sylviarum*, dorsum (left), venter (right).



*Haemogamasus pontiger* (left), *Eulaelaps stabularis* (right).



*Laelaps echidninus*