

SLP-T400 Presentation

**High-reliability, High-performance
BIXOLON Thermal Transfer Label Printer**

SLP-T400

BIXOLON

BIXOLON®

High-reliability, High-performance SLP-T400



The BIXOLON SLP-T400 is the most comprehensive, cost-effective model of industrial thermal transfer label printers in the marketplace today.

The SLP-T400 is an ideal for a wide array of mission critical bar code labeling requirements including 2D, such as Maxicode, PDF417, QR Code and Data Matrix applications.

In fact, where intricate two-dimensional bar coding is required for compliance labeling, small parts tracking, or product identification, the SLP-T400 has emerged as the printer of choice by large, multinational operations.

This easy-to-use, low-maintenance printer SLP-T400 reduces training requirements and operating costs, and provides flexible solutions through a variety of options and accessories.

1. Enhanced Hardware Provided

- Faster printing speed (**6 inches per second, 150mm/sec** – 203 dpi)
- High resolution (**300 dpi optional – SLP-T403**) of printing
- Wide range of ribbon roll length **from 74m to 300m**
(0.5" Core and 1" Core both available)
- All in one interface cards (Serial, Parallel, USB)
External/Internal Ethernet interface (Option)

2. Advanced Firmware Included

- 5 different languages supported (Programming languages)
SLCS, EPLII, ZPLII, DPL, CPL
- Short label (Minimal height of label up to 6mm) & Smart detection of empty label
- 23 Code pages included in the standard firmware
- Built-in Vector font

3. Customer Oriented Software Tools

- Device Font
- Command Programming
- User-defined Paper Size
- Label Design Program (Label Artist) included
- **Z-Driver for** Zooming-out function from in A4 or Letter to in 4" size
- Unified Label Printer Utility Supported

4. Other Value-added Options

- RFID (SLP-T400R)
- Auto-Cutter Type Model
- Ethernet Interface (External/Internal)
- Extra Ribbon Supported (Optional)

Application to

BIXOLON®



Warehouse
Inventory control,
Asset Management



Transfer/Distribution
Outer box, Shipping,
Delivery, Pallet



**Healthcare specimen
/ Patient tracking**



**Retail product
marking, Shelf
labeling, Coupon and
Receipt printing**

Etc.
-Transportation / Logistics
-Ticketing (Events entry tickets)
-General industry
& Manufacturing labeling requirements

Hardware Highlights

1. Fast Printing Speed

BIXOLON®

✓ **Fast and Intelligent**

- The Advanced controller board with a 32-bit microprocessor and 8 MB SDRAM which provides printing performance up to 6 inches per second (150mm/sec)
- The standard 2 MB (16Mb) or optional 4 MB (32Mb) Flash Memory with rich fonts, full graphics, many kinds of complex barcodes including 2-D symbology.
- Option Resolution choice
 - 203 dpi (8 dot/mm) : Standard
 - 300 dpi (11.8 dot/mm) : Optional

2. Easy Paper Loading

BIXOLON®

✓ Easy Paper guide

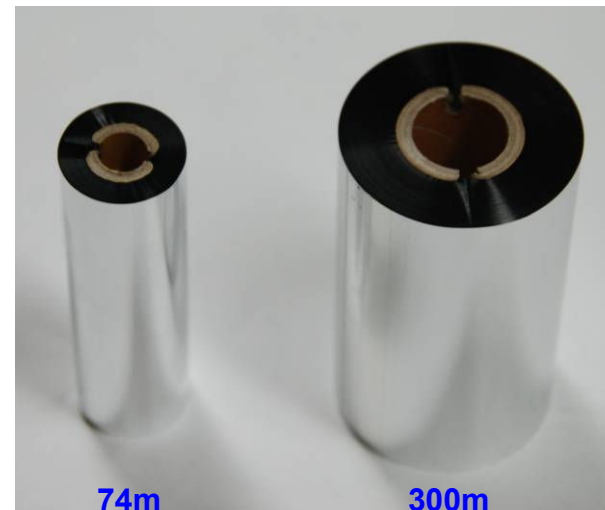
- Adjust the paper guide with one hand, and insert the paper with the other hand
- When you need to fix the paper guide size, press down the white tip
- Easy to use for Fan-fold type or out side paper



3. Efficient Ribbon Capacity

BIXOLON®

- ✓ Wide range of ribbon roll length from **74m to 300m**
 - No need to change the ribbon frequently
 - Easy to control the inventory
 - Different ribbon types, Wax, Wax/Resin and Resin (Outside Type)
 - Ribbon width from 33mm(1.3") to 110mm(4.3")
 - Ribbon core ID : 25mm(1"), 13mm(0.5")



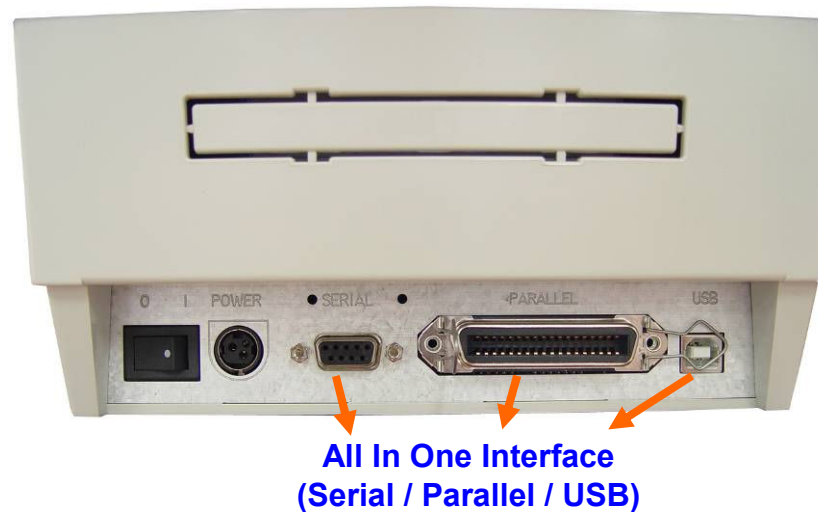
Any length acceptable

4. All in one Interface Cards

BIXOLON®

✓ All in one interfaces

- Serial, Parallel and USB all in one
- Optional Internal & External Ethernet (10/100 base T) interface card
 - * The Ethernet(10/100 base T) interface card for the SLP-T400 can be easily installed by BIXOLON utility program
- Bi-direction communication with all interfaces
- Firmware download fully supported with Serial, Parallel and USB

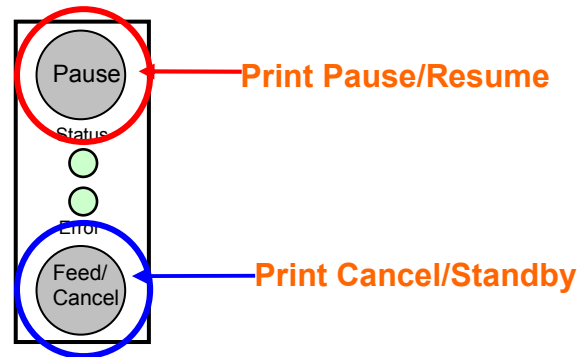


6. User-Conveniences

BIXOLON®

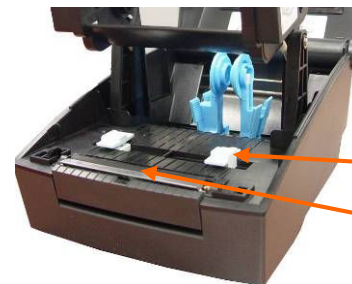
✓ **Pause / Cancel function**

- Stop the print or cancel the data in the buffer by added 2 buttons, Pause and Cancel



✓ **Adjustable Media Sensor (Left<->Right)**

- Select any type of paper and simply set media (Gap) sensor by moving it left and right



* Having Two media sensors, **Transmissive / reflective**, means that the printer supports the various papers!

Transmissive sensor (Gap, Media sensor)

Reflective sensor (Black Mark Sensor)

Firmware Highlights

✓ **5 different Emulations (Programming languages)**

- 5 Built-in languages

1. SLCS : Samsung Command, Automatic change
2. EPL 2 : Eltron Command, Automatic change
3. ZPL 2 : Zebra Command, Automatic change
4. CPL: Cognitive Command, Automatic
5. DPL : Datamax Command (Dip Switch 2-5 – ON)

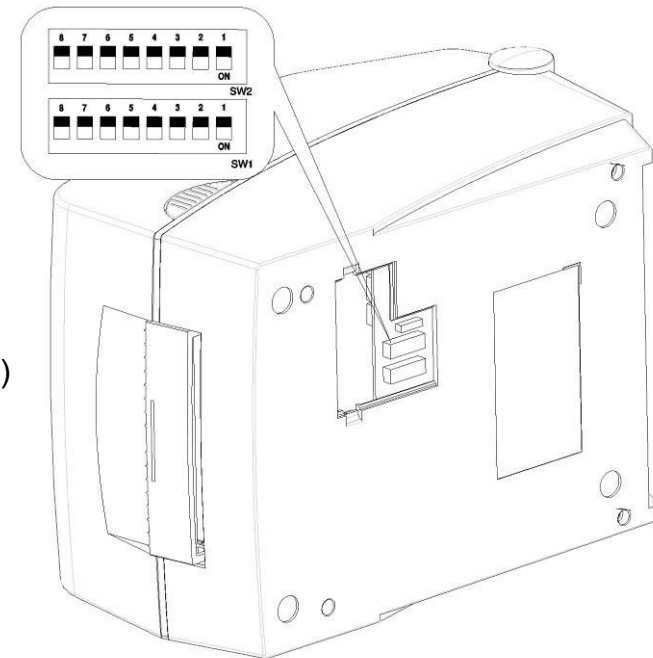
2. Simple setting with Dip Switches

BIXOLON®

✓ Simple-to-operate and convenient Dip Switches

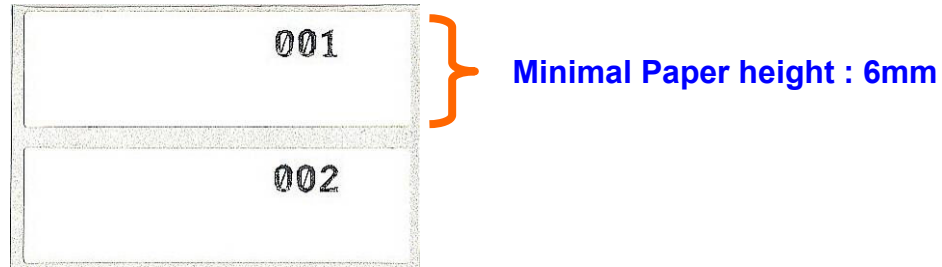
- Most of printer conditions can be changed with easy-to-use dip switch setting
 - **Speed** selection (6 IPS or 5 IPS)
 - Density selection
 - **Exhibition mode**
 - **Media** selection (**Label** or **Thermal continuous**)
 - Auto-Cutter selection
 - Back Feed option
 - Baud rate selection
 - Media detection (Detect Gap, Detect Black mark, Continuous)
 - Ribbon sensor
 - Emulation
 - Busy Condition
 - Paper end sensor status
 - Long label split printing

→ **All setting can be also changed by Commands!**



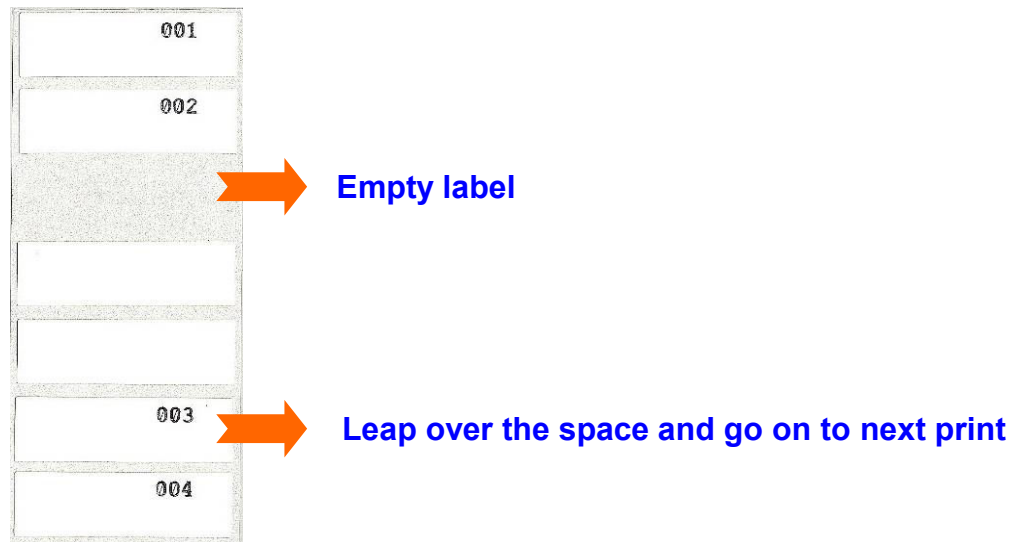
3. Short Label (Min.6mm)

- ✓ **The minimal height of label up to 6mm**



- ✓ **Smart detection of empty label**

- Detect empty label and leap over to next label automatically



4. Various Code Pages

BIXOLON®

✓ **23 Code pages supported**

- CP437(U.S.A), CP850(Latin 1), CP852(Latin 2), CP860(Portuguese), CP863(Canadian French), CP865(Nordic), WCP1252(Latin 1), CP865+WCP1252(European Combined), CP857(Turkish), CP737(Greek), WCP1250(Latin 2), WCP1253 (Greek), WCP1254(Turkish), CP855(Cyrillic), CP862(Hebrew), CP866(Cyrillic), WCP1251(Cyrillic), WCP1255(Hebrew), CP928(Greek), CP864(Arabic), CP775(Baltic), WCP1257(Balitic)

→ ***Unified label printer utility program helps you select any of them as standard***

✓ **Sheriff protection logic**

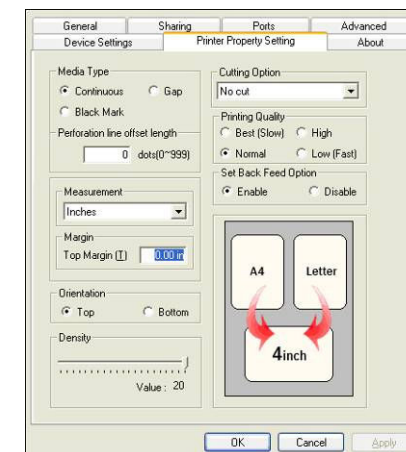
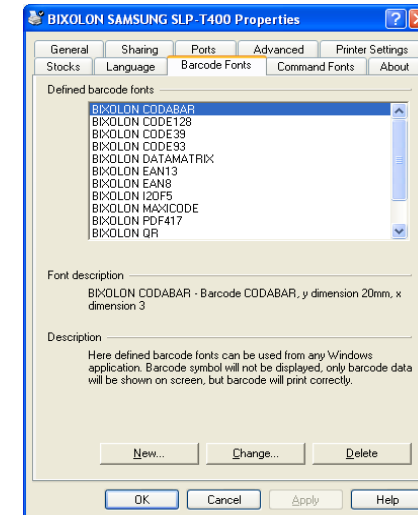
- After firmware download, printer checks the installed font version and print warning message if font and firmware mismatch for best performance.

Software Highlights

1. Powerful Driver

BIXOLON®

- ✓ **Device font supported**
 - Faster printing speed with default fonts (10 resident bitmap fonts)
- ✓ **Various Barcode font**
 - 1D : CODABAR, CODE128, CODE39, CODE93, EAN13, EAN8, I2OF5, UCC/EAN128, UPC-A, UPC-E
 - 2D: DATAMATRIX, MAXICODE, QR CODE, PDF417
- ✓ **User-defined Command font**
 - The user can make the their own command font
- ✓ **Full featured window driver**
 - Paper setting, barcode fonts, command fonts and addition
- ✓ **Zoom out printing from A4 and Letter size document**

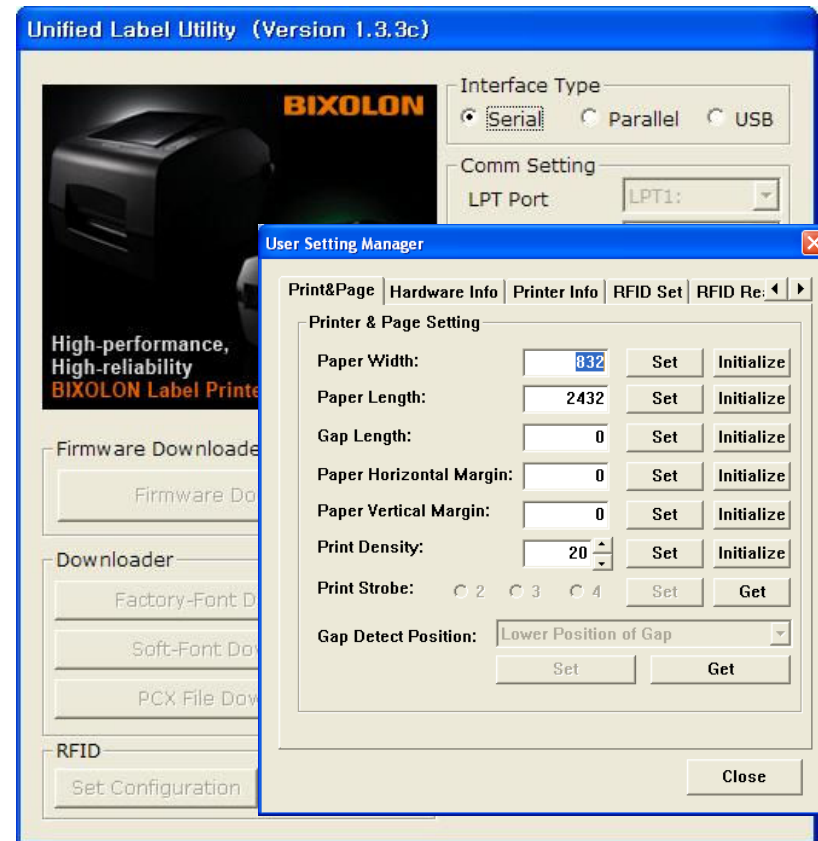
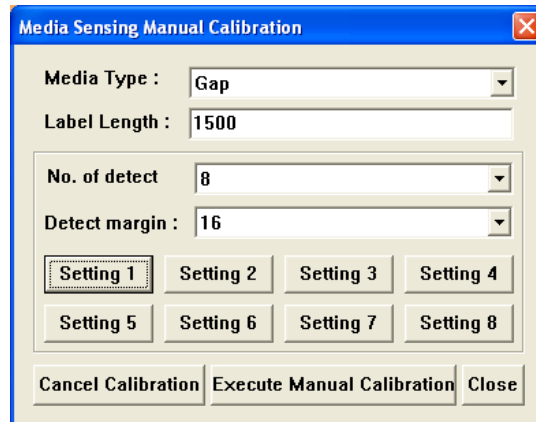


2. Customer oriented Utility program

BIXOLON®

✓ Unified Label Printer Utility Program

- Firmware Downloader
- Factory Font Downloader
- Soft Font Downloader
- PCX File Downloader
- User Setting Manager (Virtual Memory Setting)
 - Printer and Page setting
 - Hardware Information
 - Printer Information
 - RFID setting and Test
- **Manual Calibration Setting Manager***
- File Transfer Manager
- SLCS Tester

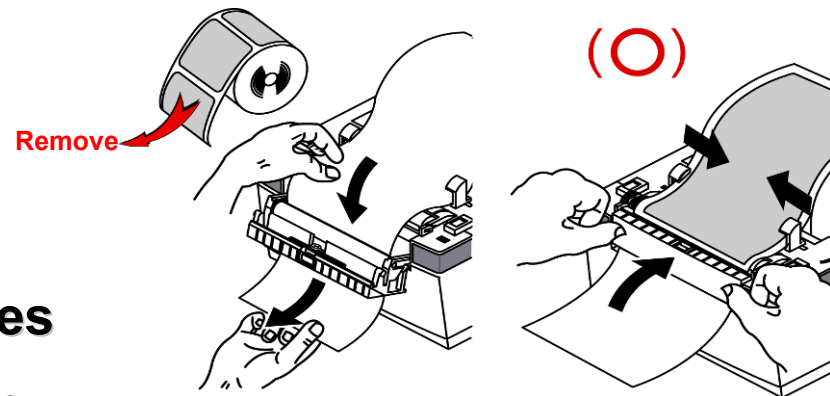


* Manual-calibration of media detection can be used when the printer cannot detect a media gap (or black mark) even after auto-calibration has been executed.

Options

✓ **Optional peeler and dispenser**

- The SLP-T400 is already equipped with a peeler and a dispenser-features that are usually only available optionally at extra cost.



✓ **Module and consumables**

- **Ribbon, Wax, Wax/Resin, Resin**
- **Label Design Program** (Full version)
- **Ethernet Interface Card** (External)

✓ **Printer option**

- Special Model for **Thicker Label** (Without Peeler)
- **Auto-Cutter Type**

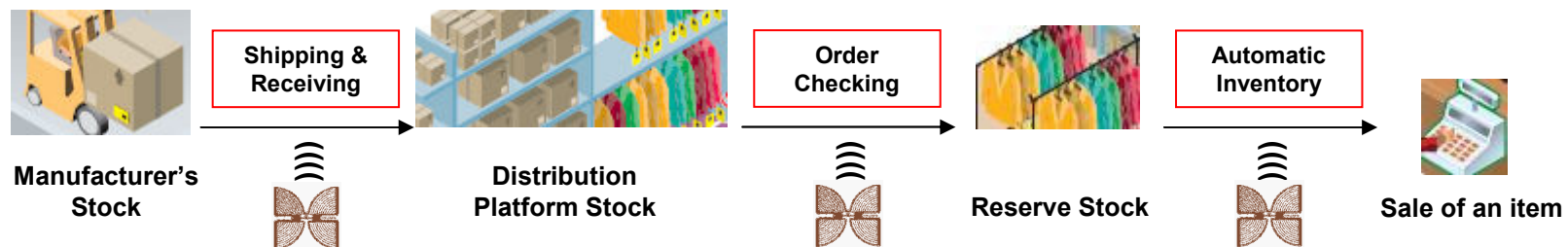
✓ **SLP-T400R (RFID Option)**

- Frequency: 865 ~ 955MHz)
- Transmit Power: 1W
- Modulation: ASK
- Air Protocol: EPC Class1, GEN2
- Type: FHSS

✓ **Advantages of UHF**

- A significant reduction in inventory shortages
- Greater speed in operations to identify pallets and packages
- Availability of information in real time
- Optimized “customer facing” thanks to perpetual inventory

Example)



Specifications

SLP-T400 Specification

BIXOLON®

Items		BIXOLON Thermal Transfer Label Printer SLP-T400 Specification	
Print Method	Direct Thermal Printing / Thermal Transfer Printing	Emulation	SLCS,EPLII,ZPLII, CPL, DPL
Resolution	203dpi(8dots/mm), Option 300dpi(11.81dot/mm)	Interface	RS232C/USB/IEEE1284 → onboard, Ethernet (Internal or External) → Option
Print Speed	Max.150mm/s(6ips)		
Print Width	104mm(832 dots)	Text Printing	Multiply, Bold, Reverse and Rotation Functions
Print Length	6 ~ 1000mm(39.4")	block Printing	Line, Box, Slope printing supported Overwrite, Exclusive or Delete mode supported
Character	Alphanumeric Characters 95, Extended Characters 128 × 22 Page 10 Resident bitmap Fonts, True Type Font, Vector Font	Graphic	PCX, BMP
		Template	The label format can be stored in the printer & can be reused Variable, Counter can be used in template
Paper	Form	Die-cut, Fan-Fold, Roll-Fed, Linerless, Continuous	Memory
	Width	25~116mm(1~4.6")	
	ID	25.4~38.1mm(1~1.5"),	
	OD	MaxΦ 130mm(5.1"), Max Φ 220mm(External)	
Ribbon	Kinds	Wax, Wax/Resin, Resin → Outside Type	AC/DC Adapter
	Width	33~110mm(1.3~4.3")	Operating
	Length	Max 300m	Safety
	Core ID	25mm(1"), 13mm(0.5")	EMC
Sensor	Adjustble Media Sensor (Gap, Black Mark), Head up Sensor, Ribbon-End Black Mark (Down), up (option)	Dimensions	214(W) × 310(D) × 200(H)mm
		Weight	Approximately 5.7kg(Set 2.0Kg)
Bar Code	1D-10 Types 2D-Maxicode,PDF417,QR-CODE,Data Matrix	Option	Nice Label Design PRG, Peeler, Auto-Cutter, RFID
		Features	Vector Font, Memory Switch Program, Z driver (Zoom-In), , Pause & Cancel Function, 2LED 2Button, Media Sensor Auto-Calibration & Manual-Calibration

Comparison Table

BIXOLON®

						
Model Name		SLP-T400	TLP 2844	TTP-245	CiT4-1000	R-400
Manufacturer		BIXOLON	Zebra	TSC	Cognitive	Argox
Print	Method	Thermal Transfer Direct Thermal	Thermal Transfer Direct Thermal	Thermal Transfer Direct Thermal	Thermal Transfer Direct Thermal	Thermal Transfer Direct Thermal
	Speed	150mm/s (6ips)	101.6mm/s (4ips)	127mm/s (5ips)	152mm/s (6ips)	152mm/s (6ips)
	Length	1000mm(39.4")	STD 279mm(11") Option 558mm(22")	999mm	5080mm(200")	1092mm(43")
Paper	Length	Min 6mm	Min 6mm	Min 6mm	Min 9.5mm	Min 10mm
Ribbon	Kinds	Wax, Wax/Resin, Resin Out Side Method	Wax, Wax/Resin, Resin Out Side Method	Wax, Wax/Resin, Resin Out Side Method	Wax, Wax/Resin, Resin Out Side Method	Wax, Wax/Resin, Resin in Side Method
	Length	Max 300m	74m	300m	165m	300m
	Core ID	13mm(0.5"), 25.4mm(1")	Core ID 13mm(0.5") OD Max 35mm(1.36")	Core ID 25.4mm(1") OD Max 67mm(2.6")	Core ID 25.4mm(1")	Core ID 25.4mm(1") OD Max 67mm(2.6")
Sensor		Movable Media Sensor, Ribbon-end, Head Open, Black-Mark up (option)	Fixed Gap Sensor, Ribbon-end, Head Open	Movable Gap Sensor, Ribbon-end, Head Open	Movable Gap Sensor, Ribbon-end, Head Open	Movable Sensor, Ribbon-end
Interface		RS232C(Max baud rate 230,400), IEEE1284, USB1.1	RS232C(Max baud rate 19,200), IEEE1284, USB1.1	RS232C(Max baud rate 19,200), IEEE1284, USB1.1	RS232C(Max baud rate 115,200), Parallel, USB-A and USB-B(2.0)	RS232C(Max baud rate 38,400), Parallel, USB1.1(opt)

Model Name		SLP-T400	TLP 2844	TTP-245	CI4-1000	R-400
Manufacturer		BIXOLON	Zebra	TSC	Cognitive	Argox
Barcode	2D	PDF417,Maxicode,QR code, Data Matrix	PDF417,Maxicode,QR code, Data Matrix	PDF417,Maxicode,DataMatrix	PDF417,Maxicode	PDF417,Maxicode,DataMatrix
Emulation		SLCS, EPLII, ZPLII, CPL, DPL	EPLII, ZPLII	TSPLII, EPLII, DPL	CPL	PPLA (Datamax) ,PPLB (Eltron), PPLZ
Memory	Flash	16Mb(2MB)	512KB (Max 1MB)	1MB ROM	8MB	1MB ROM
	RAM	64Mb(8MB) SDRAM	256KB SRAM (Max 512KB)	2MB DRAM	16MB DRAM	2MB DRAM
CPU		32bit	16bit	32bit	32bit	32bit
Application Software		Nice Label, Label Craft	Zebra Designer	Label view	Nice Label	ArgoxBar
Operation Panel		2 LED 2 Button	1 LED 1 Button	1 LED 1 Button	2 LED 1 Button	2 LED 3 Button
Auto Cutter (Option)		Guillotine (Full, Partial)	Guillotine (Full)	Partial	-	?
Options		External Big roll (Max 220mm), Ethernet, Peeler, RFID, Auto-Cutter	Auto-Cutter, Peeler, Ethernet, Real time-Clock, KDU, RFID(13.56MHz)	Auto-Cutter, Peeler, External Big ø Roll (Max 214mm), Ethernet, Linerless, Real time-Clock, Buzzer	Ethernet	Cutter, Dispenser kit, Real time clock card ,ArgoNet print server, USB (R-400 Zip only)
ETC		Vector Font, Memory Switch Program, Z driver (Zoom-In), Peeler, Pause & Cancel Function, 2LED 2Button, Media Sensor Auto-Calibration & Manual-Calibration		True Type Font	Real time-Clock standard	Internal Power
Case Material		PC/ABS	ABS	ABS	PC/ABS	ABS

Thermal Transfer Label Printer

SLP-T400

- Thank you -