

Forests with high conservation values that SCA has logged or planned to log - a sample collection

Below are 90 examples that show how SCA systematically logs and is planning to log forests with high conservation values in Sweden. Note that these are just some examples - there are many more high conservation value forests that SCA is planning to log.

LOGGED NATURAL FORESTS

1. [Mörtsjöbodarna](#) (Ragunda municipality) – a calcareous conifer forest with endangered species such as the moth *Baptria tibiale* (EN) has been clear-cut. About 10 hectares has been logged, of which just over 1 hectare was an illegal felling. (WGS84: 63.21093, 15.68982)
2. [Stor-Gravberget](#) (Ånge municipality) - 9 hectares of natural forest which harboured the protected and critically endangered EU species, the moss *Cephalozia macounii* (CR, §8) was logged. 15 red-listed species existed in the forest. (WGS84: 62.54859, 15.43568)
3. **Fransmyran NV** (Sollefteå municipality) – a registered woodland key habitat in Fransmyran's Natura 2000 area was logged and burned. There was a large extraction of timber from the woodland key habitat. (WGS84: 63.51201, 17.05453)
4. [Holmstjärnen](#) (Sollefteå municipality) - 300-year-old pines were felled. Natural pine forest of just over 3 hectares. (WGS84: 63.41977, 16.84092)
5. [Askeberget](#) (Arjeplog municipality) - 10 hectares of primeval forest with elements of up to 300-year-old conifers in one of the County Administrative Board's reserve proposals. SCA's logging was carried out in violation of the consultation with the Maskaure Sami village about when during the year the logging should take place. (WGS84: 65.98201, 17.68275)
6. [Vattensjöberget östra](#) (Ånge municipality) - 40 hectares natural forest was logged with over 230 observations of conservation species, of which 18 are red-listed. (WGS84: 62.58699, 15.39819)
7. [Dysjöberget](#) (Ånge municipality) - 43 hectares of natural forest with very high conservation values whereof 26 hectares have already been logged, 200-year-old pines felled. (WGS84: 62.60868, 15.52335)
8. [Orrmyrarna](#) (Sollefteå municipality) - 11 hectares of natural forest with very high conservation values have been clear-cut. At least 14 red-listed species, such as thousands of finds of the orchid *Goodyera repens* (VU, §8), the wood-living fungi *Amylocystis lapponicus* (VU), *Skeletocutis odora* (VU) and *Phlebia centrifuga* (VU) were found on the clear-cut. (WGS84: 63.40398, 17.00525)
9. **Matsäcksbacken** (Ånge municipality) – SCA logged a registered woodland key habitat. (WGS84: 62.603925, 16.29943)
10. [Stor-Kärmsjön](#) (Sollefteå municipality) – SCA logged 17 hectares of natural forest with 19 red-listed species, also major damage from forestry machines. (WGS84: 63.89595, 16.70333)

11. **Djupdalsbäcken** (Sollefteå municipality) – the forest was felled before the Land and Environmental Court's court process was completed. Trees with rings from the Eurasian three-toed woodpecker (NT, §4) have been logged. (WGS84: 63.27490, 16.58900)

12. **Fäbodåsen** (Ragunda municipality) - 9 hectares whereof a registered woodland key habitat of just over 1 ha has largely been logged. The forest was logged during an ongoing complaint process with the certification. (WGS84: 63.01869, 16.73839)

13. **Hundbenberget** (Vilhelmina municipality) – SCA logged 9.5 hectares of natural forest, parts of which were registered woodland key habitat, with a stump from a 265-year-old fir, as well as voluntary set aside areas. 9 red-listed species. (WGS84: 64.84743, 15.80661)

14. **Östra Stormyrberget** (Ånge municipality) – SCA has logged approx. 12 hectares of natural forest with high conservation values. (WGS84: 62.40123, 15.76665)

15. **Västra Stormyrberget** (Ånge municipality) - approx. 15 hectares of natural forest with high conservation values has been logged with species such as the lichen *Collema curtisporum*(VU) and hazel grouse (NT, §4). (WGS84: 62.39344, 15.73564)

16. **Västervik** (Storuman municipality) - approx. 7 hectares of logged natural forest with over 30 locations for the orchid *Goodyera repens* (VU, §8), the wood-living fungi *Haploporus odoratus* (VU, §8) and traces of the Eurasian three-toed woodpecker (NT, §4). The County Administrative Board classified parts of the harvested area as a core area, corresponding to woodland key habitat-quality. (WGS84: 65.01929, 17.58228)

17. **Skälsjön** (Sundsvalls municipality) - violation of the Swedish Forestry Agency's order regarding the courting grounds of the western capercaillie (*Tetrao urogallus*) (WGS134: 62.85240, 16.82846)

18. **Kroksjön** (Kramfors municipality) - violation of the Swedish Forestry Agency's order. (WGS134: 62.95614, 17.29576)

NATURAL FORESTS NOTIFIED TO BE LOGGED

19. **Svarttjärnåsen** (Ånge municipality) - roughly 15 hectares of natural forest with high to very high conservation values, 28 red-listed species. (WGS84: 62.64463, 16.10301)

20. **Marktjärn** (Ånge municipality) - 41 hectares of natural forest with high to very high conservation values, 20 red-listed species. (WGS84: 62.63929, 16.12386)

21. **Vargtjärnen NO** (Ånge municipality) - 19 hectares of natural forest with abundant occurrence of the orchid *Goodyera repens* (VU, §8) again notified for felling in a contiguous natural forest area of 200 hectares with very high conservation values, see Vargtjärnen. (WGS84: 62.58099, 16.06870)

22. **Vattensjöberget** south (Ånge municipality) - registered woodland key habitat with presence of rare species such as the wood-living fungi *Antrodia infirma* (EN) and adjacent natural forest. About 17 hectares of natural forest with 13 red-listed species. (WGS84: 62.58721, 15.38576)

23. **Soteberget** (Ragunda municipality) - 45 hectares of natural forest with very high natural values, 23 red-listed species, including the endangered action program species- the beetle *Melandrya dubia* (EN). (WGS84: 63.04616, 16.37253)
24. **Kälabodarna** (Strömsunds municipality) - 12 hectares of calcareous conifer forest, habitat for the highly threatened action program species the moth *Baptria tibiale* (EN). (WGS84: 63.53457, 15.23624)
25. **Getstugeberget** (Sollefteå kn) - 7.8 hectares of natural forest with very high conservation values – with logging notification again, 24 red-listed species. (WGS84: 63.50612, 16.83813)
26. **Oksajärvi** (Pajala municipality) - a total of approx. 64 hectares of natural forest with high conservation values, scattered 150-350-year-old conifers, 18 red-listed species, e.g. *Tricholoma matsutake* (VU), *Phlebia mellea* (VU) and Eurasian three-toed woodpecker (NT, §4). (WGS84:67.67701, 22.50056)
27. **Fågelvik** (Ånge municipality) - 8.5 hectares of natural forest/pine forest with species such as *Antrodia albobrunnea* (VU), *Cinereomyces lenis* (VU), *Byssomerulius albostramineus* (VU) and willow tit (NT, §4), 13 red-listed species. (WGS84: 62.44270, 15.03805)
28. **Norsbodberget** (Ånge municipality) - 29.5 hectares of natural forest with 18 nature conservation species such as *Goodyera repens* (VU, §8), black woodpecker (NT, §4), willow tit (NT, §4) and western capercaillie (*Tetrao urogallus*) (§4). (WGS84: 62.34845, 15.10838)
29. **Ön**, north of the nature reserve **Rörmyrberget** (Ånge municipality) - 19.7 hectares of natural forest with species such as *Goodyera repens* (VU, §8), Eurasian three-toed woodpecker(NT, §4), willow tit (NT, §4) and black grouse (§4). (WGS84: 62.33721, 15.04343)
30. **Gillberget** NO (Ånge municipality) - 10.6 hectares of natural forest/pine forest with high conservation values, 21 red-listed species such as *Haploporus odorus* (VU, §8), *Antrodia albobrunnea* (VU), *Cinereomyces lenis* (VU), *Goodyera repens* (VU, §8), *Byssomerulius albostramineus* (VU) and *Hydnellum gracilipes* (VU). (WGS84: 62.47148, 14.9342)
31. **Skumsåsberget** (Sollefteå municipality) - 13 hectares of old lichen-rich natural forest with high conservation values, 21 red-listed species. (WGS84: 63.54773, 16.69395)
32. **Skumsåstjärn Norra** (Sollefteå municipality) - 9 hectares of natural forest, 11 red-listed species, such as the lichen *Cyphelium karelicum* (VU), *Goodyera repens* (VU, §8), hazel grouse (NT, §4) and willow tit (NT, §4). Part of natural forest with very high conservation values (WGS84: 63.55319, 16.70096)
33. **Hundselet** by Pärälven (Jokkmokk municipality) - 3.7 hectares of natural forest with possible rare lichen *Evernia mesomorpha* (VU), black woodpecker (NT, §4), willow tit (NT, §4) and Eurasian three-toed woodpecker (NT, §4) and the freshwater pearl mussel *Margaritifera margaritifera* (EN). (WGS84: 66.60044, 19.42579)
34. **Blåbärshällorna** (Sollefteå municipality) - 21 ha of natural forest with high conservation values planned for logging, 26 red-listed species including Eurasian three-toed woodpecker (NT, §4), hazel grouse (NT, §4) and *Goodyera repens* (VU, §8). (WGS84: 63.42251, 16.99108)

35. [Kylbodarna](#) (Sollefteå municipality) - 19 hectares in the core area for Eurasian three-toed woodpeckers (NT, §4), a road has been cleared into the core area. Prohibition of felling after judgment in the Land and Environmental Court. (WGS84: 63.57801, 16.55086)
36. **Slättesmyran** (Sollefteå municipality) - 4 hectares of natural forest with felling notification, 15 red-listed species, including *Haploporus odorus* (VU, §8), *Goodyera repens* (§8), *Phlebia mellea* (VU), willow tit (NT, §4) and Eurasian three-toed woodpecker (NT, §4). (WGS84: 63.59799, 16.62389)
37. **Leringstjärn** (Ånge municipality) - just over 10 hectares of natural forest with high conservation values, 13 red-listed species. (WGS84: 62.64929, 16.31196)
38. **Granåsbäcken** (Ragunda municipality) - 12 hectares of natural forest / biotope requiring attention in the form of stream environments and swamp forest. 11 red-listed species, *Phlebia mellea* (VU), *Chaenotheca gracilentia* (VU), *Goodyera repens* (VU, §8), *Cypripedium calceolus* (§7) etc. (WGS84: 63.92937, 16.7884)
39. **Tivsjöflon** (Bräcke municipality) - 45 hectares of natural forest with abundant occurrence of *Goodyera repens* (VU, §8). (WGS84: 62.71737, 16.22941)
40. **Tivsjönäset** (Ånge municipality) - 60 hectares of natural forest with abundant occurrence of *Goodyera repens* (VU, §8). (WGS84: 62.70723, 16.23186)
41. [Saskam](#) (Jokkmokk municipality) - approx. 5 hectares of a total of 11 hectares of natural forest with species such as *Tricholoma matsutake* (VU), *Boletopsis grisea* (VU), hazel grouse (NT, §4) and willow tit (NT, §4), 17 red-listed species. (WGS84: 66.62474, 19.69014)
42. **Vålberget** (Bräcke municipality) - 33 hectares of natural forest with high conservation values. 14 red-listed species, including the *Goodyera repens* (VU, §8), *Epipogium aphyllum* (NT, §8) and willow tit (NT, §4). (WGS84: 62.95756, 16.24091)
43. **Nötviken** (Bräcke municipality) - 22 hectares of calcareous conifer forest with high conservation values, 10 red-listed species including *Haploporus odorus* (VU, §8), *Goodyera repens* (VU, §8), *Epipogium aphyllum* (NT, §8) and *Cypripedium calceolus* (§7). (WGS84: 63.05491, 16.10783)
44. **Stensjöflon** (Sollefteå municipality) - 19 hectares of natural forest with high conservation values, 14 red-listed species. (WGS84: 63.25247, 16.41228)
45. [Örsjöberget N](#) (Härjedalens municipality) - 8 hectares of continuous forest with 120–200-year-old pines. 19 red-listed species, including the wood-living fungi *Gloeophyllum carbonarium* (EN), *Antrodia albobrunnea* (VU), *Byssomerulius albostramineus* (VU), the orchid *Goodyera repens* (VU, §8) and willow tit (NT, §4). (WGS84: 62.20414, 15.09915)
46. [Örsjöberget V](#) (Härjedalens municipality) - 69 hectares of thinned out natural pine forest, of which 43 hectares have already been felled. 19 red-listed species, including rare wood-living fungi such as *Gloeophyllum carbonarium* (EN) and *Neoantrodia infirma* (EN). (WGS84: 62.18645, 15.09893)
47. [Örsjöberget SO](#) (Härjedalens municipality) - 4 hectares of continuous forest with abundant occurrence of the orchid *Goodyera repens* (VU, §8), 11 red-listed species. (WGS84: 62.18312, 15.12616)

48. **Juånäset** (Ånge municipality) - 42.5 hectares of natural forest with very high conservation values, 21 conservation species, such as the orchid *Goodyera repens* (VU, §8), the wood-living fungi *Phlebia centrifuga* (VU) and *Fomitopsis rosea* (NT) and the lichens *Lobaria pulmonaria* (NT) and *Bryoria nadvornikiana* (NT). (WGS84: 62.41104, 15.40503)
49. **Klockarbacken** (Bergs municipality) - 23.5 hectares of natural forest. 19 red-listed species including Eurasian three-toed woodpecker (NT, §4) and black woodpecker (NT, §4). (WGS84: 62.83766, 13.84248)
50. **Orrmyrbäcken** (Sollefteå municipality) - 37 hectares of natural forest, 13 red-listed species including the wood-living fungi *Phlebia mellea* (VU) and *Haploporus odorus* (VU, §8), the orchid *Goodyera repens* (VU, §8) and the birds Eurasian three-toed woodpecker (NT, §4), willow tit (NT, §4) and black woodpecker (NT, §4). (WGS84: 63.60995, 16.69814)
51. **Frättmyran** (Sollefteå municipality) - 15 hectares of lichen-rich natural forest. 13 red-listed species, abundant *Goodyera repens* (VU, §8) the lichen *Lobaria pulmonaria* (NT) and habitat for the Eurasian three-toed woodpecker (NT) and willow tit (NT, §4) (WGS84: 63.50770, 17.22311)
52. **Taråberget** (Sollefteå municipality) - 3 hectares of continuous forest, 10 red-listed species including hazel grouse (NT, §4), willow tit (NT, §4) and black woodpecker (NT, §4). (WGS84: 63.62104, 16.65917)
53. **Storhammartjärn** (Sollefteå municipality) - 9 hectares of natural forest with abundant occurrence of the orchid *Goodyera repens* (VU, §8) and the wood-living fungi *Haploporus odorus* (VU, §8) etc. (WGS84: 63.56879, 16.94307)
54. **Ratnivaara** (Gällivare municipality) - 18.5 hectares of natural forest with rare wood-living fungi such as *Pilatoporus primaevus* (EN) and *Cinereomyces lenis* (VU). (WGS84: 66.88893, 20.75707)
55. **Börsåsflon** (Härjedalen's municipality) - 5.8 hectares of natural forest in the form of a 1.7 km long and 10 - 50 meter wide protection zone next to a registered woodland key habitat planned for logging. (WGS84: 62.36847, 14.80660)
56. **Gammfäbodåsen** (Sollefteå municipality) - 11 hectares of natural forest with the rare wood-living fungi *Phlebia mellea* (VU), the orchid *Goodyera repens* (VU, §8) and willow tit (NT, §4). (WGS84: 63.44260, 16.57505)
57. **Långtjärnsberget** (Sollefteå municipality) - 25 hectares of natural forest with the Eurasian three-toed woodpecker (NT, §4) and willow tit (NT, §4). (WGS84: 63.44971, 16.61480)
58. **Hålmyren** (Östersund municipality) - 8.5 hectares of continuous forest in the breeding area of the Eurasian three-toed woodpecker (NT, §4). (WGS84: 63.21022, 15.08613)
59. **Oi-Erstorpet** (Åre municipality) - approx. 30 hectares of continuity forest in the Eurasian three-toed woodpecker's breeding area is planned for logging. (WGS84: 63.28387, 13.36652)
60. **Lake Rogstabodsjön** (Ånge municipality) - 13 hectares of natural forest with species such as the orchid *Goodyera repens* (VU, §8), the wood-living fungi *Haploporus odorus* (VU, §8), and *Phellinidium ferrugineofuscum* (NT), the Eurasian three-toed woodpecker (NT, §4) and the lichen *Lobaria pulmonaria* (NT). (WGS84: 62.59249, 14.86182)

61. **Rönnerberget** (Storuman municipality) - 24 hectares of natural forest that is part of a de-registered woodland key habitat now planned for logging and described as partly primeval forest by the Swedish Forestry Agency. (WGS84: 65.13907, 16.90938)

62. **Byströmsmåttjärnarna** (Ragunda municipality) - 3 hectares of natural forest which is entirely made up of a biotope that requires consideration. The orchid *Goodyera repens* (VU, §8) and the willow tit (NT, §4) have been found in the forest. (WGS84: 63.00572, 16.8467)

63. **Knösmyran** (Sollefteå municipality) - 10 hectares of lichen-rich natural forest next to the Stensjöflon nature reserve (Natura 2000). Nesting area for willow tit (NT, §4) and Siberian jay (§4). (WGS84: 63.27865, 16.45217)

64. **Nybäck** (Sollefteå municipality) - 3.6 hectares of lichen-rich natural forest. (WGS84: 63.92937, 16.7884)

65. **Östra Stormyrberget** (Ånge municipality) - approx. 17 hectares of natural forest, parts of which are voluntary set-aside and other parts planned to be felled in order to, according to SCA, "preserve" and "develop" finds of the wood-living fungi *Haploporus odoroscent* (VU, §8), *Phlebia mellea* (VU) and western capercaillie (*Tetrao urogallus*). (WGS84: 62.39886, 15.76506)

66. **Gräliden** (Skellefteå municipality) - 10 hectares of sand pine forest, 10 conservation species, such as the fungi *Boletopsis grisea* (VU), *Tricholoma goliath* (VU) and *Tricholoma apium* (VU). (WGS84: 64.97178, 20.33126)

67. **Oi-Olsbodarna** (Östersund municipality) - 24 hectares of continuity forest in the breeding area of the Eurasian three-toed woodpecker (NT, §4). (WGS84: 63.37835, 15.34993)

NATURAL FORESTS WITHDRAWN FROM FELLING after pressure from NGOs

After pressure from the environmental movement, SCA withdrew from felling these forests. These are all natural forests that should not have been planned for logging from the start. SCA has also announced that they intend felling some of these forests again - with so-called "enhanced" consideration. Something that we strongly oppose - these forests need to be protected in their entirety. Now they have no protection.

68. [Vargtjärnen](#) (Ånge municipality) - over 200 hectares of natural forest with very high conservation values, 38 red-listed species, including the critically endangered wood fungus *Antrodia crassa* (CR). Parts of the forest are planned to be logged again, see **Vargtjärnen NO**. (WGS84: 62.58010, 16.06020)

69. [Stor-Mullberget](#) (Härjedalens municipality) - 70 hectares of natural forest / pine forest with very high conservation values. 40 red-listed species, including the critically endangered wood fungus *Antrodia crassa* (CR). (WGS84: 62.25156, 15.30174)

70. [Mörtsjökojan](#) (Bräcke municipality) - 16 hectares of natural forest with very high conservation values, 31 red-listed species, part of the forest with the plant *Actaea spicata* felled despite knowledge of the presence of the moth *Baptria tibiale* (EN) whose larvae feeds on *Acteaspicata*. (WGS84: 62.91749, 16.18770)

71. **Kåski** (Sundsvalls municipality) - 15 hectares of natural forest with very high conservation values. 31 red-listed species, such as the lichen *Ramalina thrausta* (EN), the moss *Neckera*

pennata (VU), the fungus *Sarcodon fennicus* (VU) and *Sarcosoma globosum* VU, §8), the orchid *Goodyera repens* (VU, §8) etc. (WGS84: 62.44441, 16.80713)

72. **Hundforsklippen** (Sollefteå municipality) - 13 hectares of natural forest with very high conservation values, 27 red-listed species. (WGS84: 63.41702, 16.91215)

73. **Flistersjöskogen** (Ånge municipality) - 20 hectares of natural forest with very high conservation values, 25 red-listed species including the highly threatened action program species the beetle *Melandrya dubia* (EN) and the fungi *Antrodia infirma* (EN). (WGS84: 62.54359, 15.45600)

74. **Skumsåstjärn** (Sollefteå municipality) - 9 ha of lichen-rich natural forest with very high conservation values, 23 red-listed species. (WGS84: 63.55142, 16.70031)

75. **Vackerbackhöiden** (Sundsvalls municipality) - roughly 30 hectares of natural forest with high to very high conservation values, 19 red-listed species. (WGS84: 62.62602, 16.51383)

76. **Vattensjöberget norra** (Ånge municipality) - 18 hectares of natural forest with high to very high conservation values, 18 red-listed species. (WGS84: 62.59234, 15.38293)

77. **Fettjetjärnen/Stentjärnsberget** (Ånge municipality) – planned logging for a forest road into natural forest with high to very high conservation values, 23 red-listed species. (WGS84: 62.64211, 15.9505)

78. **Svartbäcken-Fransåsen** (Sollefteå municipality) - 11 hectares of natural forest with high conservation values, 23 red-listed species. (WGS84: 63.54962, 16.92492)

79. **Björnbäcken** (Sollefteå municipality) - 12 hectares of natural forest with high conservation values, 19 red-listed species. (WGS84: 63.34833, 16.46552)

80. **Sjömyran** (Sollefteå municipality) - 5 hectares of lichen-rich natural forest with high conservation values. 18 red-listed species including the orchid *Goodyera repens* (VU, §8), the Eurasian three-toed woodpecker (NT, §4) and willow tit (NT, §4). (WGS84: 63.32235, 16.50174)

81. **Bodberget** (Ragunda municipality) - 8.5 hectares of natural forest with high conservation values, 15 red-listed species, including the wood-living fungi *Haploporus odorus* (VU, §8) and the orchid *Goodyera repens* (VU, §8). (WGS84: 63.14362, 16.01003)

82. **Gillberget** (Ånge municipality) - 13 hectares of natural pine forest with high conservation values, the rare fungi *Antrodia albobrunnea* (VU) and *Cinereomyces lenis* (VU). (WGS84: 62.47488, 14.93039)

83. **Högberget** (Sollefteå municipality) - 3.1 hectares of lichen-rich natural forest with high conservation values. 15 red-listed species including the lichen *Plectocarpon lichenum* (VU), the fungi *Haploporus odorus* (VU, §8), the orchid *Goodyera repens* (VU, §8) and willow tit (NT, §4). (WGS84: 63.59383, 16.35253)

84. **Fransmyran** (Sollefteå municipality) - 24 hectares of natural forest in a registered Natura 2000 area. Planned road construction through a woodland key habitat. Another woodland key habitat has already been logged, see **Fransmyran NV**. 13 red-listed species. (WGS84: 63.50796, 17.06392)

85. **Stormyrberget** (Ragunda municipality) - approx. 40 hectares of natural forest in the middle of the Eurasian three-toed woodpecker's (NT, §4) territory (about 60 ring-cut trees in the area). (WGS84: 63.40377, 16.07339)

86. **Halstjärrnarna** (Bergs municipality) - 4 hectares of natural pine forest, 16 red-listed species including the fungi *Hydnellum gracilipes* (VU), *Hygrophoropsis olida* (VU) and the bird willow tit (NT, §4). (WGS84: 62.39454, 14.78217)

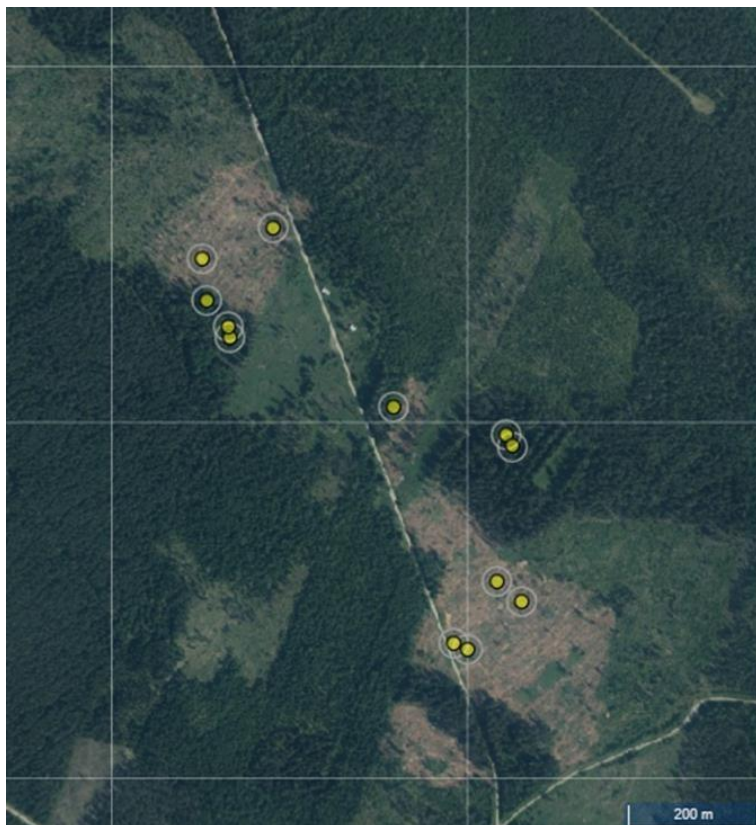
87. **Krångeberget** (Sollefteå municipality) - 4 hectares of continuous forest with 10 red-listed species, including the orchid *Goodyera repens* (VU, §8), the wood-living fungi *Phlebia mellea* (VU) and willow tit (NT, §4). (WGS84: 63.45013, 16.79726)

88. **Gamla Junselevägen** (Sollefteå municipality) - 2 hectares of natural forest/stream environment which is entirely made up of a sensitive biotope which demands consideration. (WGS84: 63.72048, 16.74696)

89. **Stor-Kärmsjön V.** (Sollefteå municipality) - 7.4 hectares of natural forest with 28 nature conservation species, including *Hygrophoropsis olida* (VU), *Boletopsis grisea* (VU), *Osmoporus protractus* (VU) and Eurasian three-toed woodpecker (NT, §4). (WGS84: 63.897419, 16.691837)

90. **Överbodvill** (Sollefteå municipality) - 8 hectares of natural forest, including *Perenniporia subacida* (VU) and *Phlebia mellea* (VU). Logging ban by the Swedish Forestry Agency due to nesting environment for the Eurasian three-toed woodpecker (NT, §4). (WGS84: 63.320883, 17.18531)

A selection of aerial photographs and photos



Mörtsjöbodarna (Ragunda kn) is a calcareous forest with the endangered moth *Baptria tibiale* (EN). About 10 hectares logged, of which just over 1 hectare was an illegal felling. Yellow points are observations of *Baptria tibiale* from June 28, 2021, a year and a half before the older forest sections were felled. (WGS84: 63.21093, 15.68982)



Fransmyran NV (Sollefteå kn) - a large extraction of timber from the registered woodland key habitat in Fransmyran's Natura 2000 area. (WGS84: 63.51201, 17.05453)



Djupdalsbäcken in Sollefteå municipality – SCA felled a tree with the characteristic pecking rows made by the near threatened and protected bird species Eurasian three-toed woodpecker (NT, §4) during ongoing court proceedings (WGS84: 63.27490, 16.58900).



Hanging lichen-rich natural forest which is planned for logging at Skumsåsberget, Sollefteå municipality. (WGS84: 63.54773, 16.69395). Photo: Private.



A forest vehicle road has been built right into a untouched natural forest area of 200 hectares at Vargtjärnen, Ånge municipality. (WGS84: 62.57162, 16.06995). Photo: Private.