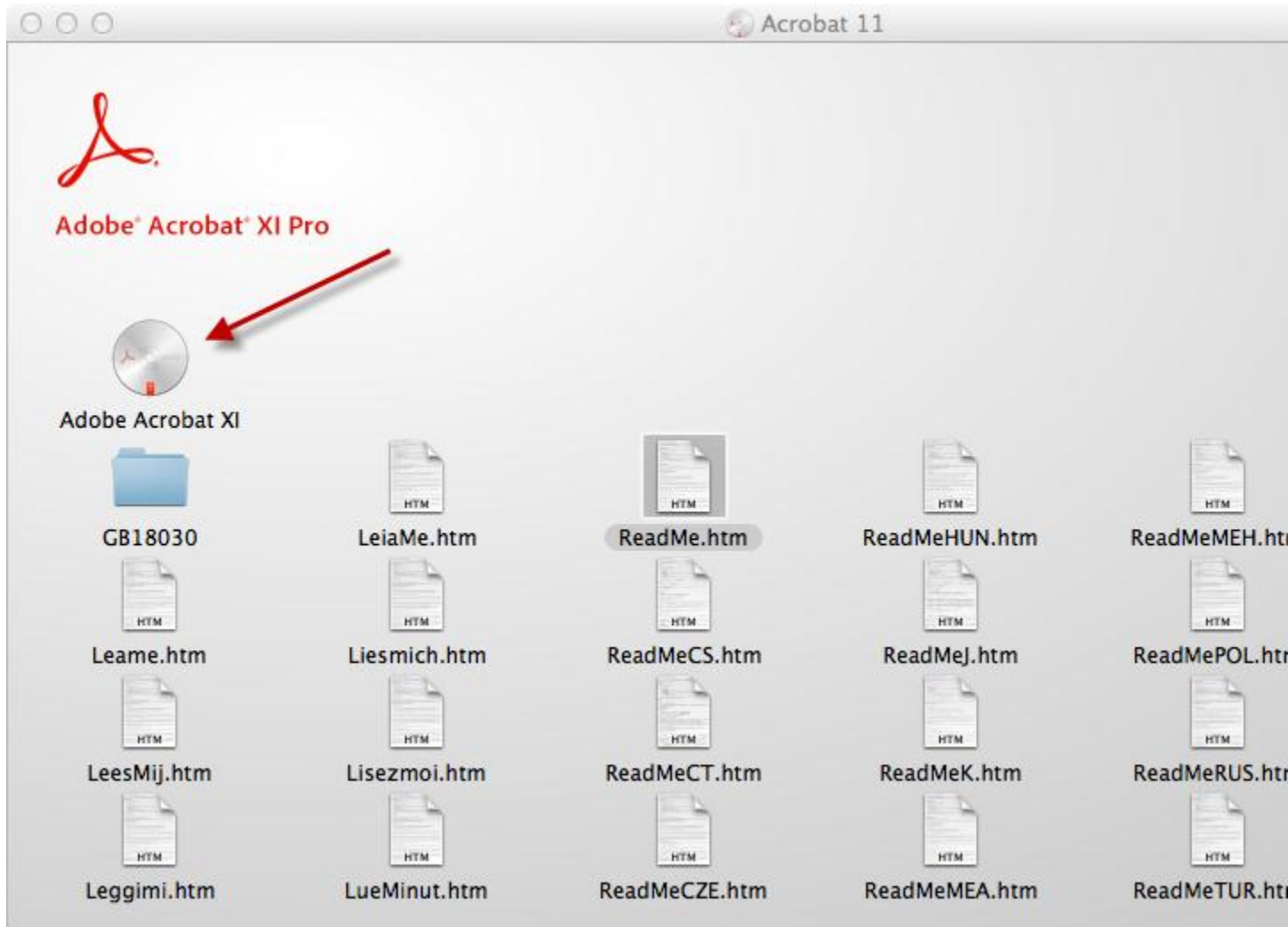


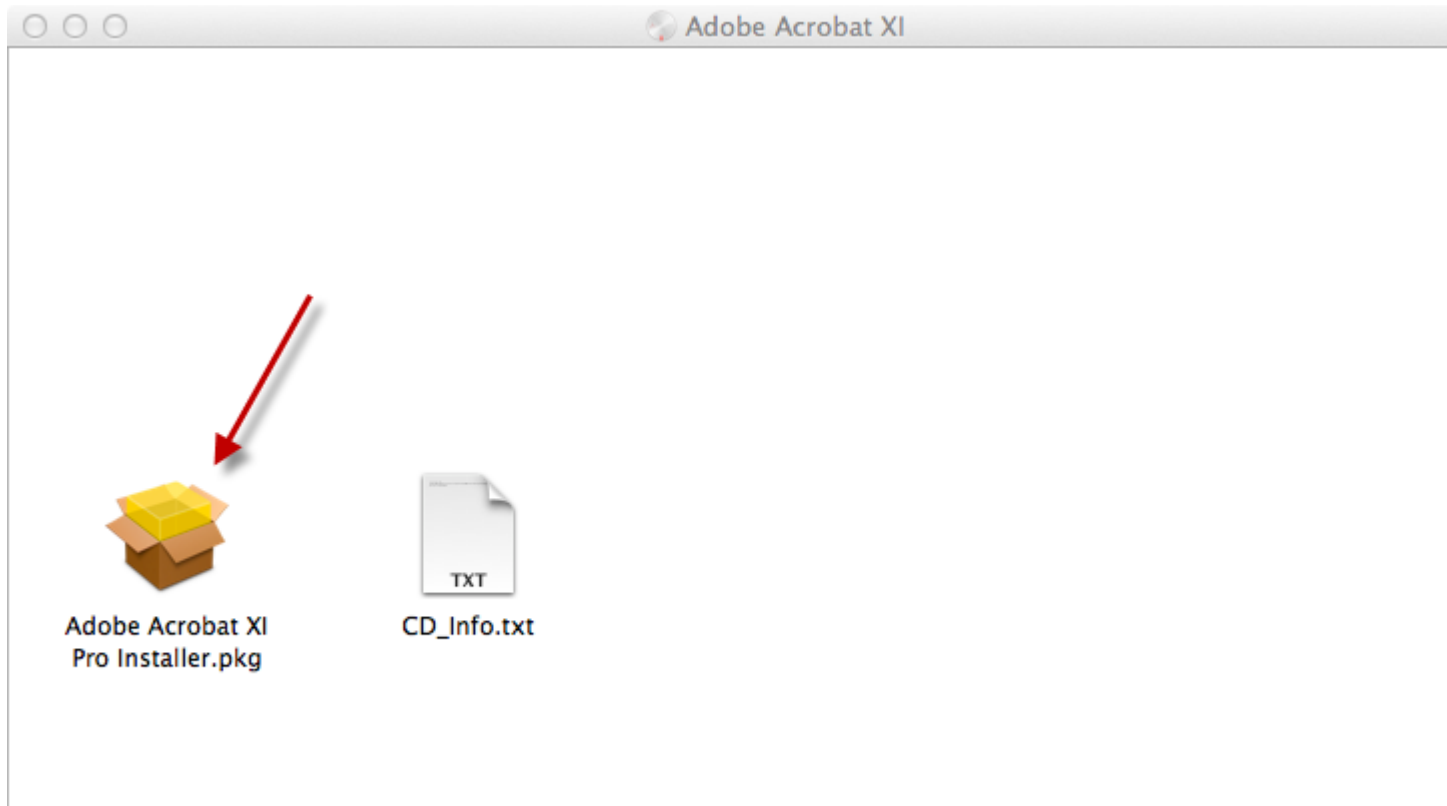
ACROBAT XI MACINTOSH INSTALLATION INSTRUCTIONS

CWRU SOFTWARE CENTER

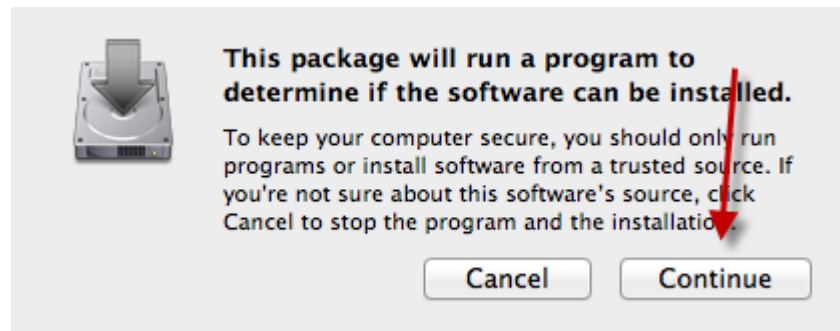
PLEASE PRINT OR READ THESE INSTRUCTIONS
THE INSTALLER WINDOW MAY BE HIDDEN UNDER THIS BROWSER WINDOW



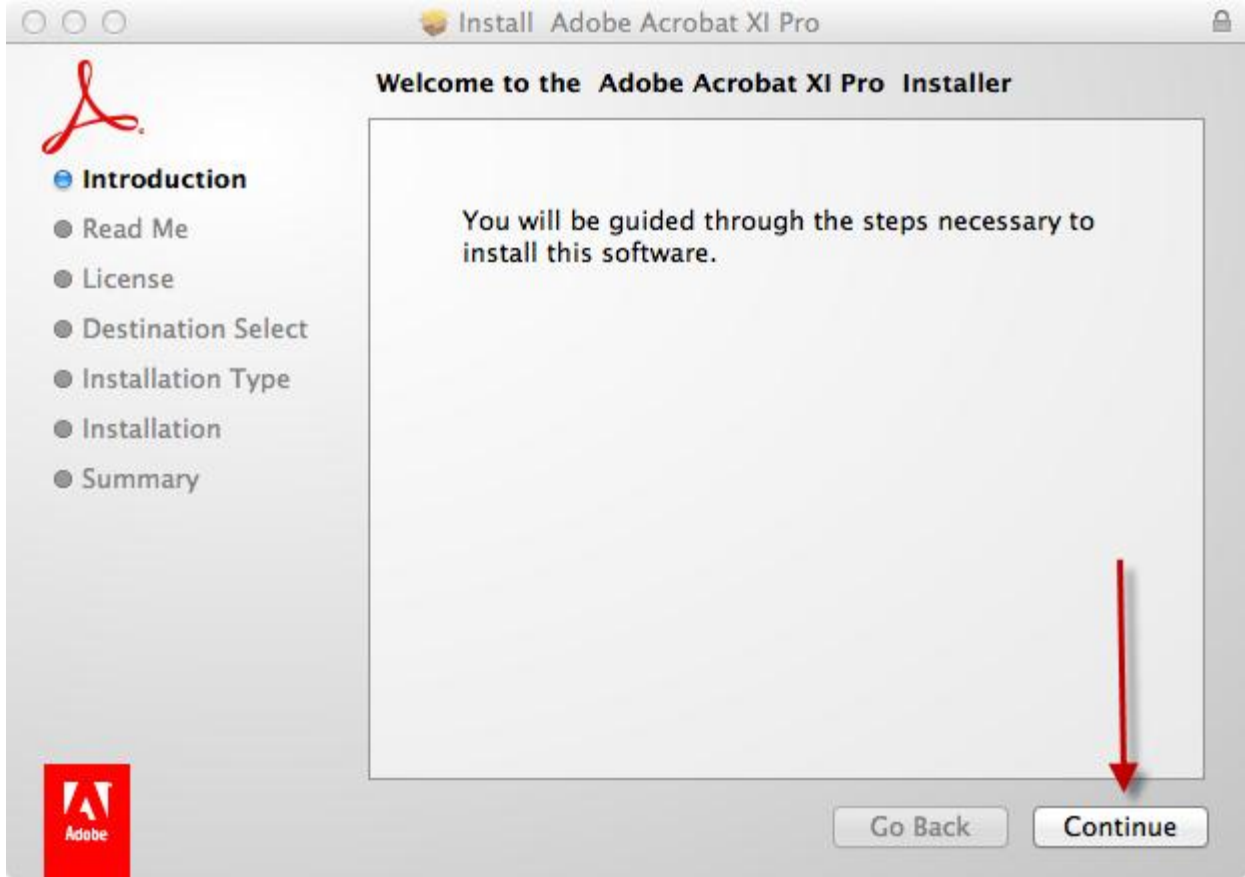
This folder will open when you double-click on the .dmg file you downloaded from the Software Center.
Double-click "Adobe Acrobat XI" to continue.



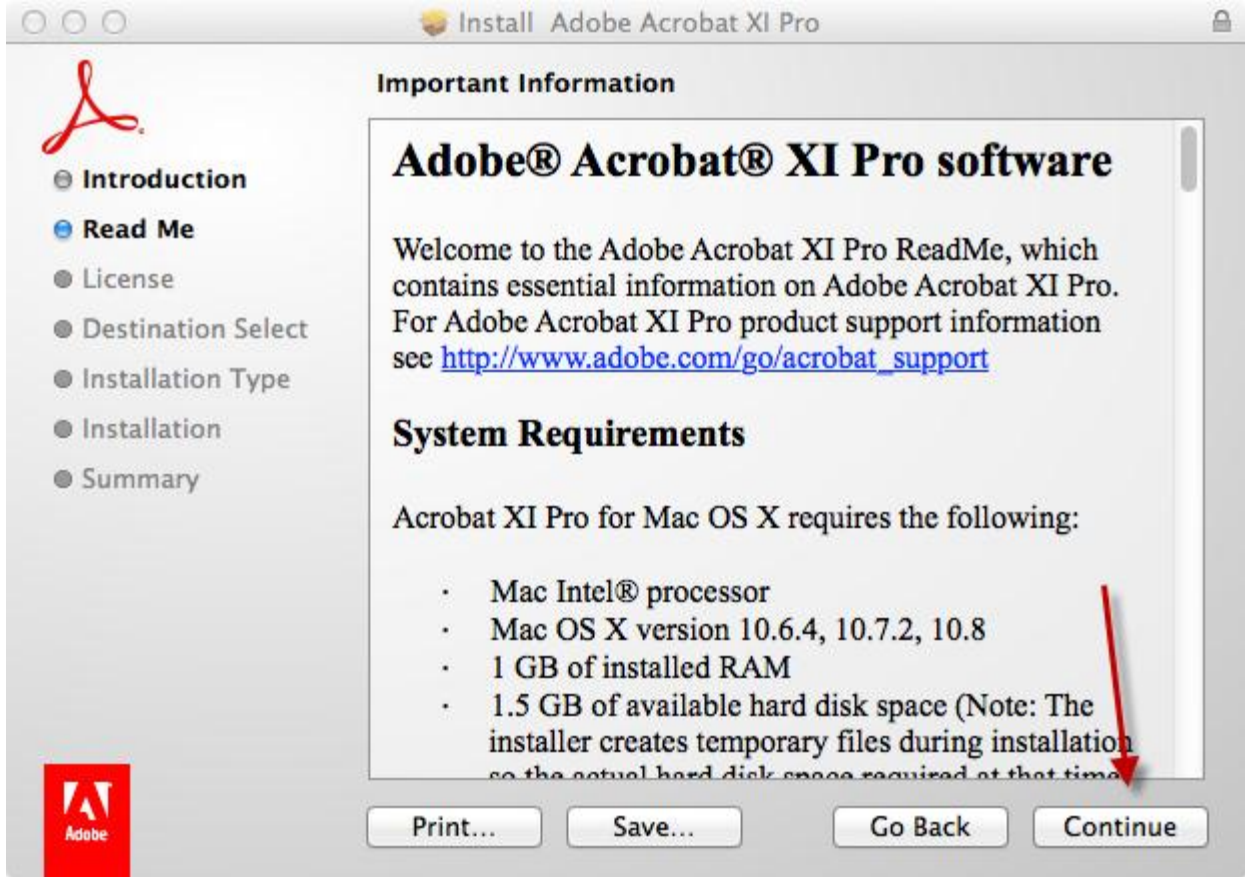
Double-click "Adobe Acrobat XI Pro Installer.pkg" to start the installer.



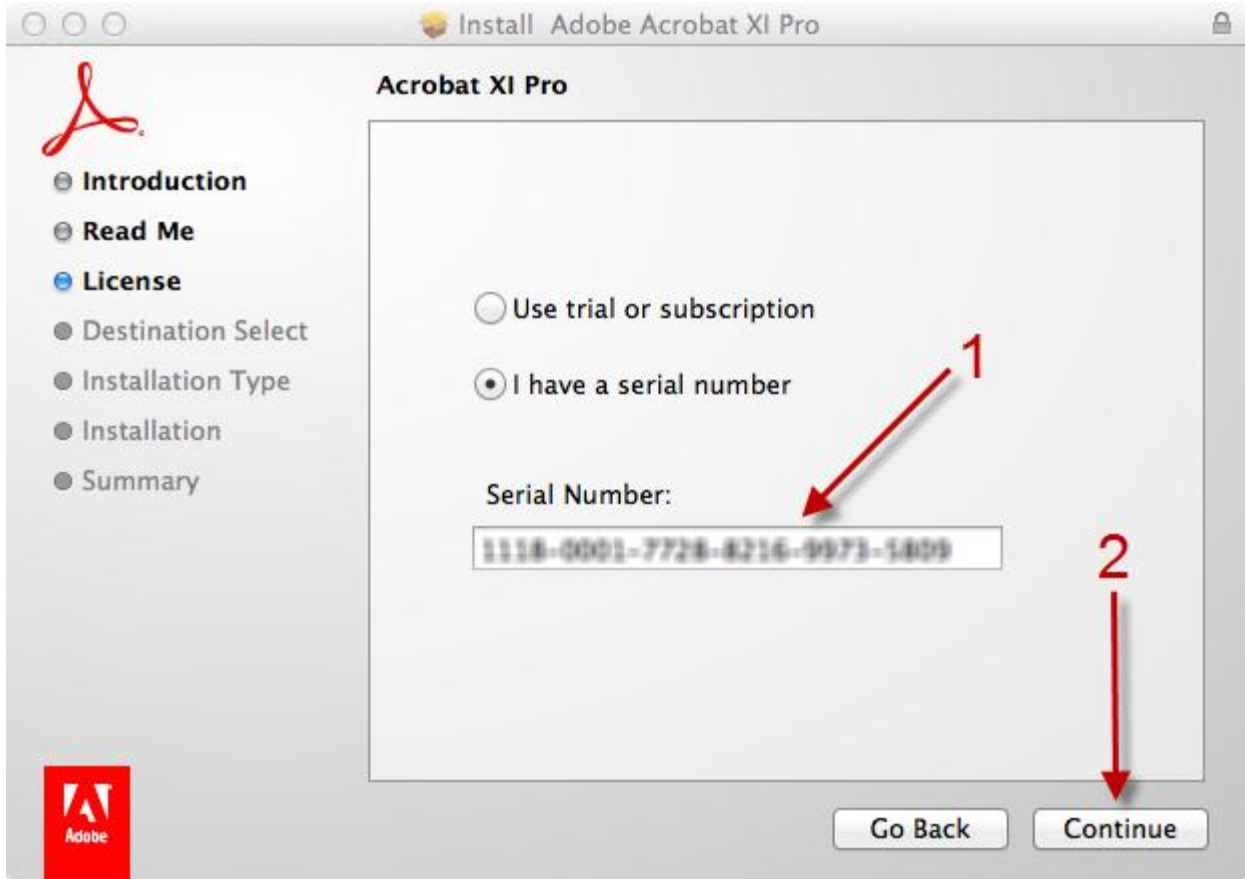
Please press "Continue" to go on.



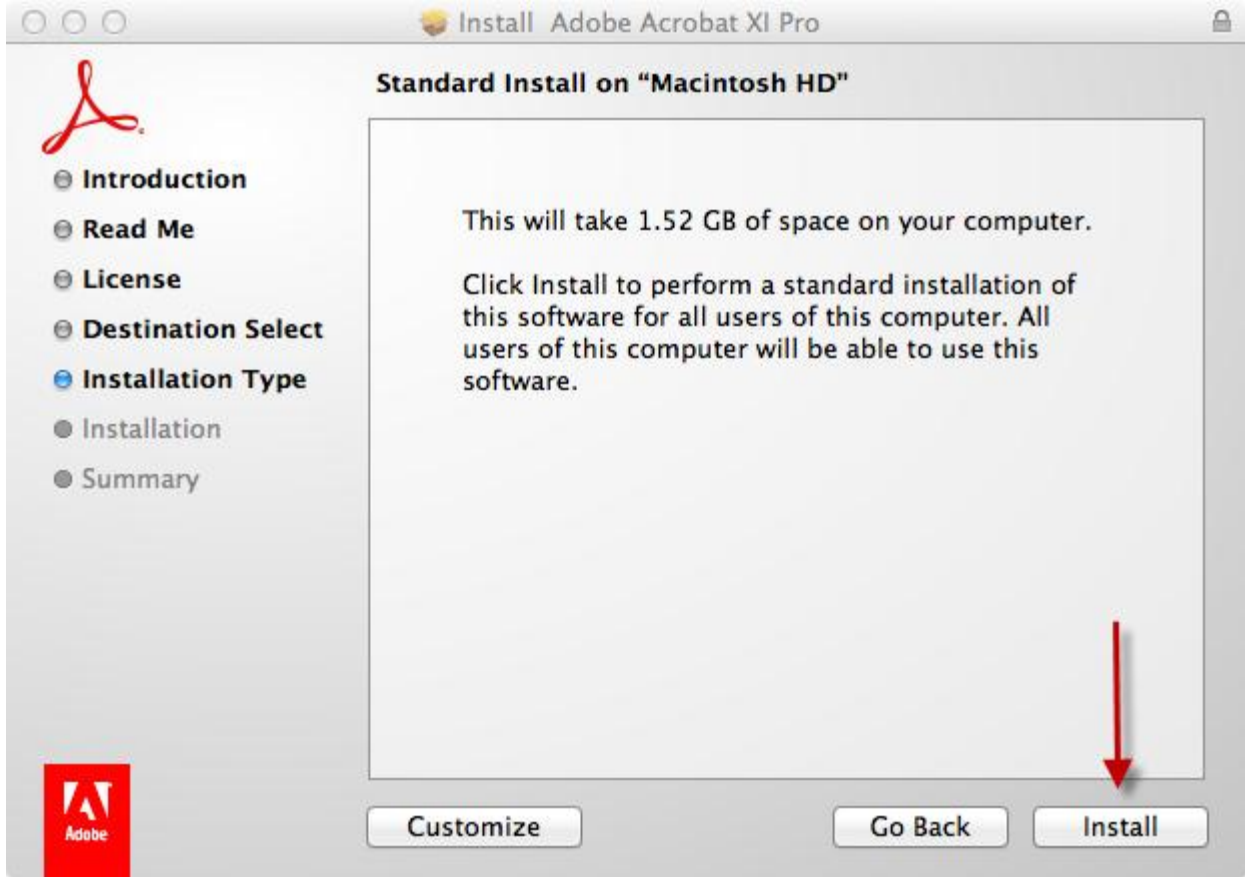
Please press "Continue" to go on.



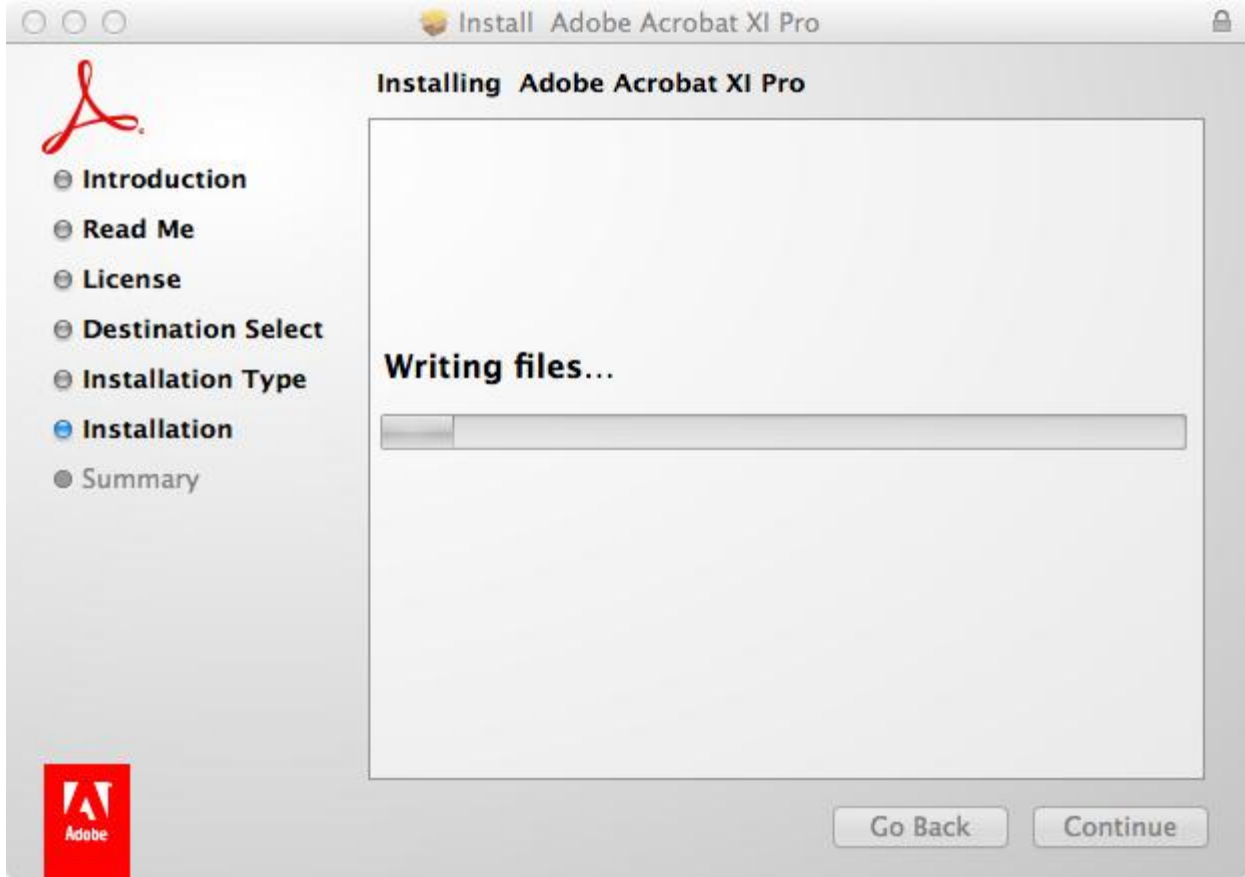
Read me screen contain information about the software. Press “Continue” to go on.



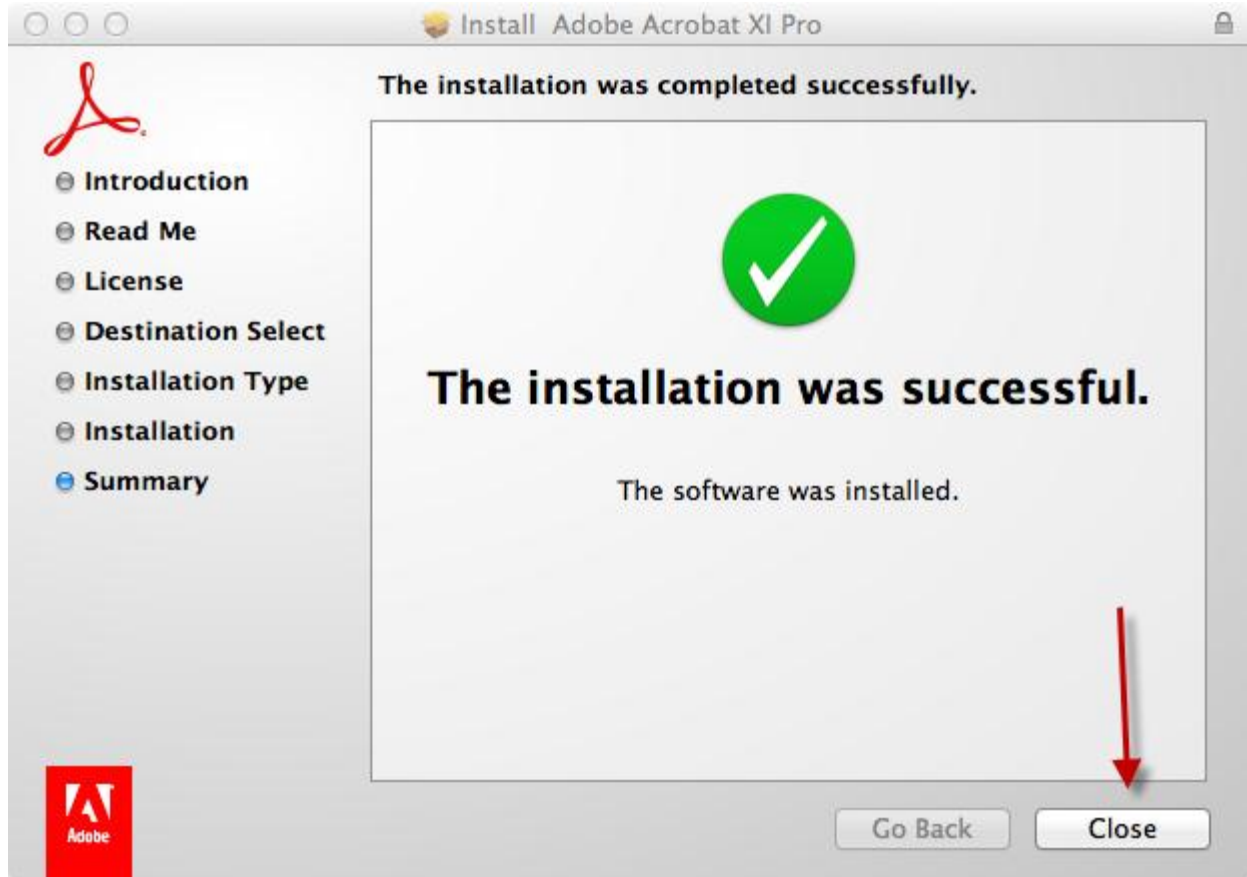
Please enter the serial number that was emailed to you from the Software Center. Press “Continue” to go on.



You may customize the installation by press the "Customize" button. The default installation is recommended for most users. Press "Install" to start the installation process.



Installation in progress, please wait...



Installation is complete. Press "Close" to exit the installer.

For help with this installation, please contact the ITS Help Desk at 216-368-HELP