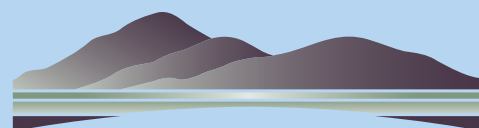
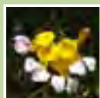
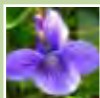


ESTERO AMERICANO PRESERVE

Herbarium Book

JANUARY, 2011



SONOMA LAND TRUST

...to protect the land forever

ESTERO AMERICANO PRESERVE

Herbarium Book Introduction

SUMMARY

This herbarium book contains scanned plant specimens collected from the Estero Americano Preserve, which is located near the town of Bodega, California. This project arose out of the grassland monitoring project designed to evaluate the effectiveness of cattle grazing for coastal grassland enhancement. During the spring to summer months of 2009 and 2010 specimens were collected, pressed, verified for identification, labeled, and scanned, so that future participants working on the monitoring project will have a helpful aid for noting species present at the Preserve.



The Estero Americano is a scenic tidal estuary that stretches from Valley Ford to the Pacific Ocean. Photo by Stephen Joseph Photography.

ESTERO AMERICANO PRESERVE

The Sonoma Land Trust's Estero Americano Preserve is a scenic and biologically diverse 127-acre property located near the town of Bodega along the Estero Americano, a tidal estuary that extends from Valley Ford to the Pacific Ocean. The Preserve was acquired in 1997 and 2001 in partnership with California State Coastal Conservancy and the Sonoma County Agricultural Preservation and Open Space District. The Preserve was purchased with the goal of protecting the coastal estuary, upland environments and other sensitive resources; allowing for restoration of habitat areas; and providing limited public access.



The Estero Americano. Photo by Stephen Joseph Photography.

COASTAL GRASSLAND ASSESSMENT

A 2007 coastal grassland assessment by local consulting botanists identified much of the grassland area of the Preserve as coastal prairie. Coastal prairie is a perennial-grass dominated community with at least 10-15% relative cover of native grasses and forbs. Some of the native plant species found on the Preserve include: California oatgrass, purple needlegrass, tufted hairgrass, june-grass, lupine, harlequin lotus, early blue violet, Douglas's iris, and California blackberry. These plant species persist among non-native annual and perennial grasses and forbs that arrived in the area some years ago.

CATTLE GRAZING FOR COASTAL PRAIRIE ENHANCEMENT

Coastal grassland systems are threatened by shrub and tree encroachment, invasion and dominance by non-native annual and perennial grasses, and habitat loss due to housing development. Management activities such as mowing, grazing and prescribed burning can mimic beneficial disturbance regimes, control brush encroachment and the negative impacts of non-native species as well as promote native species. Grazing is often the most economical, practical and reliable method for managing grasslands at a large scale.

Drawing on previous research across California grassland ecosystems, SLT is working under the assumption that livestock grazing will benefit native flora found in the Estero grasslands by reducing the biomass and cover of exotic grasses, such as wild oats and brome grasses. Central to this management assumption is that native species are limited by competition with exotic grasses, and that properly-timed grazing will decrease exotic grass cover and biomass and correspondingly increase the abundance of native species.



Douglas's iris; blue wildrye; harlequin lotus. Photos by Shanti Wright.

PARTNERSHIPS

To better understand the role of livestock grazing and other management activities at the Estero, SLT is working with multiple partners to assess the coastal grasslands, improve grazing infrastructure, and develop plans for grazing management and ecological monitoring for the coastal prairie grassland found on the property. The State Coastal Conservancy (SCC), Gold Ridge Resource Conservation District (RCD) the Natural Resources Conservation Service (NRCS), and the U.S. Fish and Wildlife Service (USFWS) have provided funding and technical assistance for coastal grassland management and water quality enhancement projects. SLT is also collaborating with the Coastal Prairie Enhancement Feasibility Study (CPEFS) to utilize grazing exclosures for the study the cattle grazing impacts on invasive velvetgrass (*holcus lanatus*).

GRAZING PLAN AND GRASSLAND MONITORING PLAN

Gold Ridge RCD has generously supported SLT with the development of both a grazing management plan and a grassland monitoring plan to guide and track livestock management activities at the Estero Americano Preserve for years to come. Certified Rangeland Manager Lisa Bush assessed the Preserve to determine grassland production values and appropriate stocking levels for the grazing management plan and Dr. Caroline Christian developed the



grassland monitoring plan to evaluate the effectiveness of cattle grazing in achieving SLT's conservation goals for the Preserve. Livestock are managed by local operator Joe Pozzi, recently honored with the Farm Bureau's first Luther Burbank Conservation Award for his efforts to protect the county's natural resources.

These plans set clear management goals and provide an opportunity to manage the property adaptively based on information from the monitoring program. The grazing management and monitoring plans are aimed at highlighting conservation values, such as the preservation of native species, healthy soils, and water quality, while at the same time supporting a working landscape that promotes historical uses of the land.

GRASSLAND MONITORING PROJECT

Each spring, SLT works with volunteers and Sonoma State University interns to measure various aspects of the grassland vegetation at 29 permanent one square meter monitoring plots throughout the preserve. Examples of the variables monitored include: percent cover and frequency and richness (number) of all native and exotic plant species. Measurement of these variables helps to provide a more complete picture about the health of the grasslands through time and help SLT staff determine if invasive plant species like velvet grass are increasing or decreasing in abundance.



Gold Ridge Resource Conservation District staff Brittany Heck and Noelle Johnson (left) and Sonoma State University interns Connor Ross and Kara Doolin (right) provided assistance with data collection; Dr. Caroline Christian leading the grass identification training (center). Photos by Shanti Wright.

EXOTIC SPECIES

As with all grasslands found throughout California, exotic grasses – both perennial and exotic dominate the Estero grasslands. Overall, 80% of the grassland is covered by exotic species, mostly annual grasses. Although this number may seem high to those unfamiliar with grasslands, grassland ecosystems have been hit hard by invasive species, leaving little room for native plant species to thrive. The monitoring program is designed to look at several noxious grassland weeds and to detect the arrival of new exotic species.

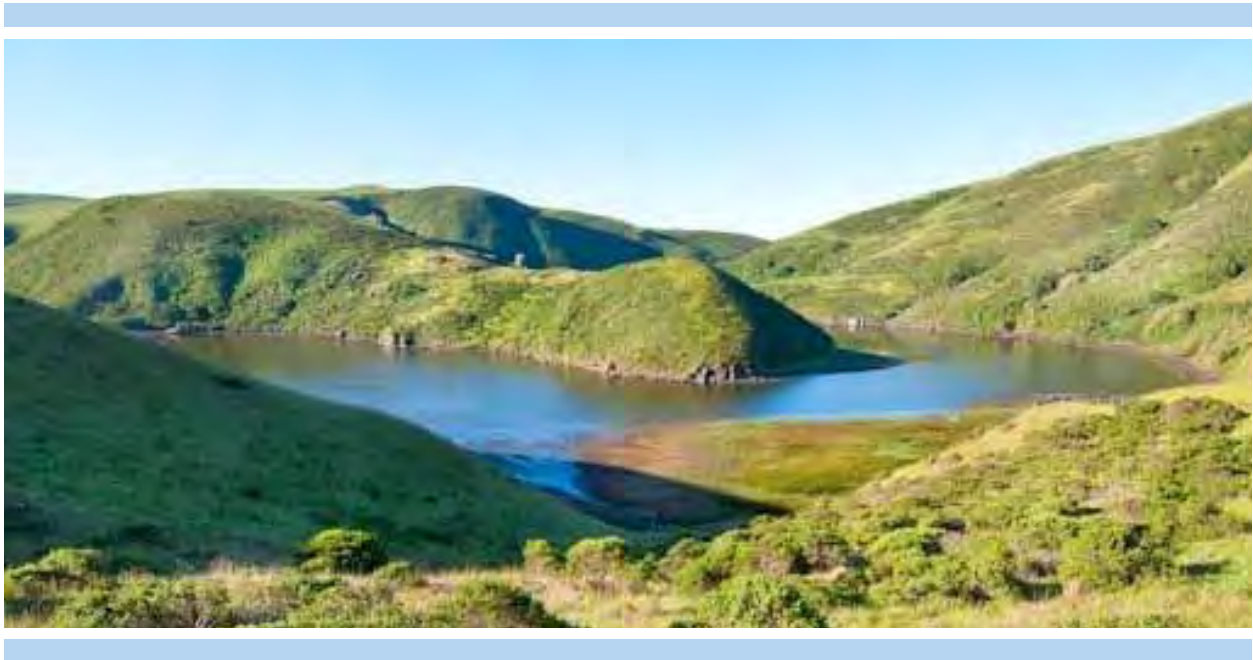
NOTABLE NATIVES

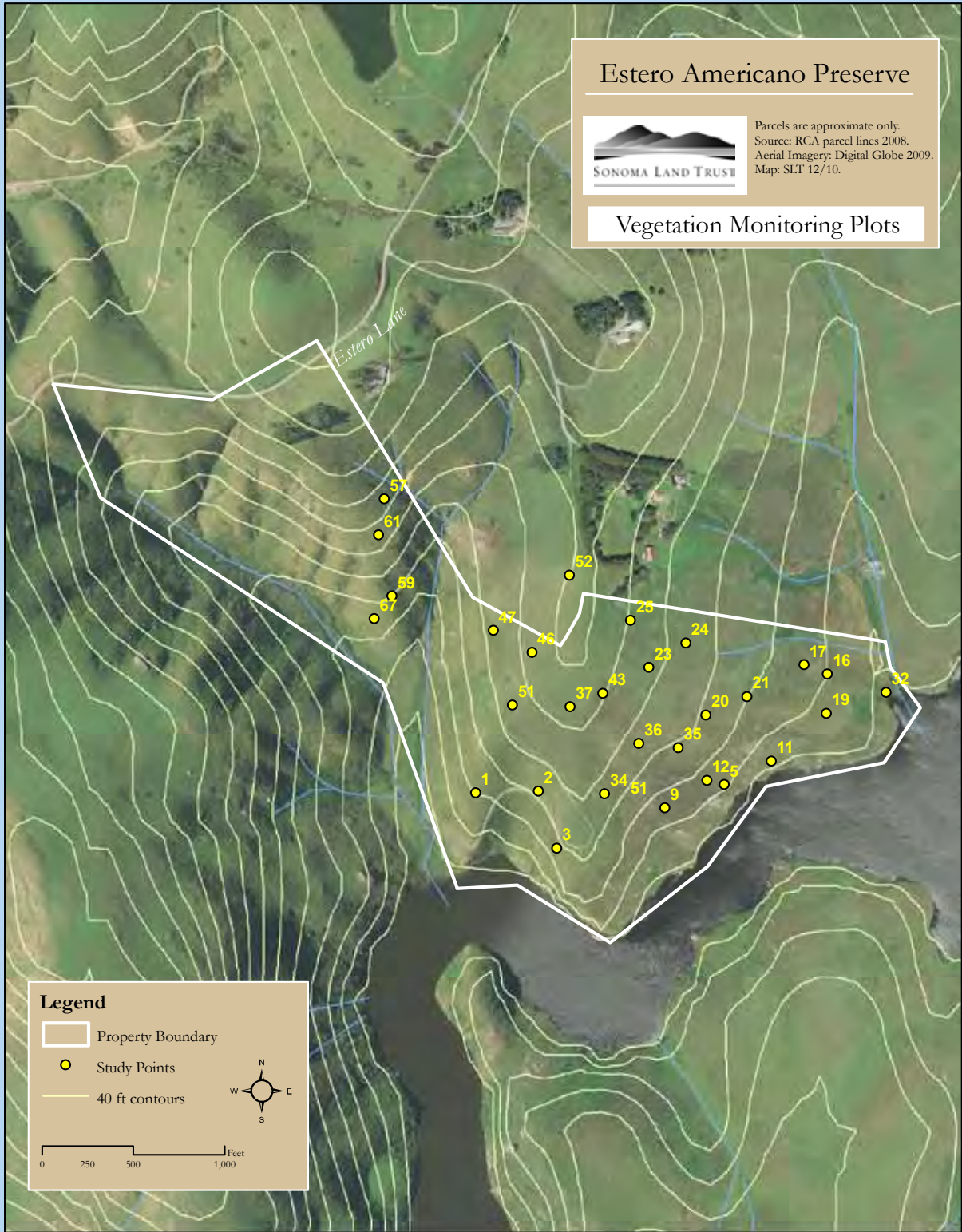
Given the dominance of invasive grasses, the team was pleased to learn that the Preserve has a phenomenal amount of native perennial grass, rush and sedge species, which together comprise on average over 20% of the vegetation cover in the grasslands. During the spring, tall stands of California hairgrass, purple needlegrass, and California brome undulate across the hillsides as coastal breezes sweep in from the Estero. Some notable native wildflowers also found in the spring include bulbs, such as ground brodiaea, blue-eyed grass, and Ithuriel's spear, and forbs, such as California acaena, lupine, and a multitude of clovers.

ACKNOWLEDGEMENTS

Many individuals contributed to the success of the grassland monitoring project and herbarium book. Special thanks go to Dr. Caroline Christian of Sonoma State University whose vision and guidance made these efforts possible. Dr. Christian authored the monitoring plan and continues to provide direction for its implementation. Gold Ridge Resource Conservation District generously supported the development of the grazing management and grassland monitoring plans, and RCD staff Noelle Johnson, Brittany Heck, and Sierra Cantor assisted with data and plant specimen collection. Liz Parsons and Michael Hogan of the CNPS Milo Baker Chapter helped identify plant species during the 2009 monitoring and Peter Warner, botanical consultant, identified specimens in 2010 and verified all of the samples within the herbarium. Sonoma State University interns Karissa Westphal and Tammie Lindstrom and volunteer April Owens spent many hours preparing the plant specimens for this book. The monitoring project and herbarium book effort was coordinated by Shanti Wright, Sonoma Land Trust's Stewardship Project Manager for the Estero Americano Preserve.

The herbarium book introduction was prepared by Dr. Caroline Christian, faculty with the Environmental Studies and Planning Department at Sonoma State University, in collaboration with Shanti Wright. The herbarium book is a work in progress that will expand over time. For updates to this document, or for additional information about vegetation management activities occurring at the Estero Americano Preserve, please contact Sonoma Land Trust at: (707) 526-6930 or visit www.sonomalandtrust.org.





ESTERO AMERICANO PRESERVE PLANT LIST

Prepared by: Linda Esposito and Kathleen Kraft, 2007.

Plant list additions and Jepson name changes provided by Peter Warner, 2010.

GROUP	FAMILY	SCIENTIFIC NAME	COMMON NAME	Former Family or Latin Binomial	NATIVE	Page #
FERNS AND ALLIES	Blechnaceae	Woodwardia fimbriata	giant chain fern		yes	12
	Dennstaedtiaceae	Pteridium aquilinum	bracken fern	Pteridium aquilinum- var. pubescens	yes	13
	Dryopteridaceae	Polystichum munitum	western sword fern		yes	14
	Equisetaceae	Equisetum telmateia ssp. braunii	giant horsetail		yes	15
	Woodsiaceae	Athyrium filix-femina	common lady fern	Dryopteridaceae	yes	16
GYMNOSPERMS	Cupressaceae	Hesperocyparis macrocarpa	Monterey cypress	Cupressus macrocarpa	no	
	Pinaceae	Pinus radiata	Monterey pine		no	
ANGIOSPERMS/DICOTS	Anacardiaceae	Toxicodendron diversilobum	western poison oak		yes	
	Apiaceae	Conium maculatum	poison hemlock		no	17
		Daucus pusillus	rattlesnake weed		yes	18
		Eryngium armatum	armed coyote thistle		yes	19
		Heracleum lanatum	cow parsnip		yes	
		Ligusticum apiifolium	celeryleaf licorice-root		yes	
		Lomatium utriculatum	spring gold lomatium		yes	20
		Sanicula crassicaulis	Pacific sanicle		yes	
		Torilis nodosa	knotted hedge parsley		no	
	Asteraceae	Achillea millefolium	yarrow		yes	21
		Anaphalis margaritacea	pearly everlasting		yes	
		Artemisia douglasiana	Douglas's mugwort		yes	22
		Baccharis pilularis	coyote brush		yes	23
		Bellis perennis	English daisy		no	24
		Carduus pycnocephalus	Italian thistle		no	25
		Cirsium quercetorum	brownie thistle		yes	26
		Cirsium vulgare	bull thistle		no	27
		Cotula coronopifolia	brass buttons		no	28
		Logfia gallica	narrowleaf cottonrose	Filago gallica	no	29
		Gnaphalium purpureum	purple cudweed	Gnaphalium purpureum	yes	30
		Grindelia stricta	gumplant		yes	31
		Hemizonia congesta ssp. lutescens	hayfield tarweed	H. congesta ssp. congesta	yes	
		Helenium puberulum	sneeze-weed		yes	32
		Hypochaeris glabra	smooth cat's-ear		no	
		Hypochaeris radicata	rough cat's-ear		no	33
Jaumea carnosa		marsh jaumea		yes	34	
Madia gracilis	slender tarweed		yes	35		
Madia sativa	coast tarweed		yes	36		

GROUP	FAMILY	SCIENTIFIC NAME	COMMON NAME	Former Family or Latin Binomial	NATIVE	Page #
ANGIOSPERMS/DICOTS	Asteraceae (continued)	<i>Matricaria matricarioides</i>	pineapple weed	<i>Chamomilla suaveolens</i>	no	37
		<i>Microseris acuminata</i>	silverpuffs		yes	38
		<i>Microseris bigelovii</i>	coastal silverpuffs		yes	
		<i>Psilocarphus tenellus</i> var. <i>tenellus</i>	woolly marbles		yes	
		<i>Pseudognaphalium ramosissimum</i>	pink cudweed	<i>Gnaphalium ramosissimum</i>	yes	39
		<i>Sonchus asper</i> ssp. <i>asper</i>	prickly sow thistle		no	
		<i>Symphyotrichum chilense</i>	creeping aster	<i>Aster chilensis</i>	yes	
		<i>Wyethia augustifolia</i>	mules ears		yes	
	Boraginaceae	<i>Heliotropium curassavicum</i>	salt heliotrope		yes	40
		<i>Myosotis discolor</i>	changing forget-me-not		no	41
	Brassicaceae	<i>Nasturtium officinale</i>	watercress	<i>Rorippa nasturtium-aquaticum</i>	yes	42
	Caprifoliaceae	<i>Symphoricarpos albus</i> var. <i>laevigatus</i>	snowberry		yes	43
	Caryophyllaceae	<i>Cerastium glomeratum</i>	mouse-ear chickweed		no	
		<i>Silene gallica</i>	windmill pink		no	44
		<i>Spergularia rubra</i>	red sand-spurrey		no	45
	Chenopodiaceae	<i>Atriplex triangularis</i>	fat hen		yes	46
		<i>Salicornia virginica</i>	pickleweed		yes	47
	Convolvulaceae	<i>Calystegia collina</i> ssp. <i>collina</i>	Coast Range false bindweed		yes	
		<i>Calystegia purpurata</i> ssp. <i>purpurata</i>	purple western morning-glory		yes	
		<i>Calystegia subacaulis</i>	short-stemmed morning-glory		yes	48
		<i>Convolvulus arvensis</i>	bindweed		no	49
	Crassulaceae	<i>Dudleya farinosa</i>	powdery live-forever		yes	50
	Cucurbitaceae	<i>Marah oreganus</i>	coast man-root		yes	51
	Fabaceae	<i>Acmispon parviflorus</i>	miniature lotus	<i>Lotus micranthus</i>	yes	52
		<i>Acmispon americanus</i> var. <i>americanus</i>	Spanish clover	<i>Lotus purshianus</i> var. <i>purshianus</i>	yes	53
		<i>Acmispon wrangelianus</i>	calf lotus	<i>Lotus wrangelianus</i>	yes	
		<i>Hosackia gracilis</i>	harlequin lotus	<i>Lotus formosissimus</i>	yes	54
		<i>Lathyrus hirsutus</i>	Caley pea		no	55
		<i>Lotus angustissimus</i>	slender lotus		no	56
		<i>Lotus corniculatus</i>	bird's-foot trefoil		no	57
		<i>Lupinus bicolor</i>	miniature lupine		yes	58
		<i>Lupinus variicolor</i>	variable-colored lupine		yes	59
		<i>Lupinus microcarpus</i> var. <i>microcarpus</i>	chick lupine		yes	
		<i>Trifolium albopurpureum</i>	rancheria clover		yes	
		<i>Trifolium barbigerum</i> var. <i>barbigerum</i>	bearded clover		yes	

GROUP	FAMILY	SCIENTIFIC NAME	COMMON NAME	Former Family or Latin Binomial	NATIVE	Page #
ANGIOSPERMS/DICOTS	Fabaceae (continued)	<i>Trifolium campestre</i>	hop clover		no	
		<i>Trifolium dubium</i>	little hop clover shamrock		no	60
		<i>Trifolium glomeratum</i>	clustered clover		no	
		<i>Trifolium gracilentum</i>	pinpoint clover		yes	
		<i>Trifolium macraei</i>	Macrae's clover		yes	61
		<i>Trifolium subterraneum</i>	subterranean clover		no	62
		<i>Trifolium striatum</i>	knotted clover		no	63
		<i>Trifolium wormskioldii</i>	cow clover		yes	64
		<i>Vicia hirsuta</i>	tiny vetch		no	65
		<i>Vicia sativa</i>	spring vetch		no	66
		<i>Vicia tetrasperma</i>	lentil vetch		no	67
	Franconiaceae	<i>Frankenia salina</i>	alkalie sea-heath		yes	68
	Gentianaceae	<i>Zeltnera muehlenbergii</i>	Muhlenberg's centauray	<i>Centaurium muehlenbergii</i>	yes	69
	Geraniaceae	<i>Erodium cicutarium</i>	red-stemmed filaree		no	
		<i>Erodium moschatum</i>	musky stork's-bill		no	
		<i>Geranium dissectum</i>	cutleaf geranium		no	70
	Grossulariaceae	<i>Ribes divaricatum</i> var. <i>pubiflorum</i>	coast black gooseberry		yes	71
	Lamiaceae	<i>Mentha pulegium</i>	pennyroyal		no	72
		<i>Monardella villosa</i> spp. <i>franciscana</i>	coyote mint		yes	73
		<i>Prunella vulgaris</i> var. <i>lanceolata</i>	self-heal		yes	
		<i>Stachys rigida</i> var. <i>rigida</i>	hedge-nettle	<i>Stachys ajugoides</i> var. <i>rigida</i>	yes	74
	Linaceae	<i>Linum bienne</i>	pale flax		no	75
	Lythraceae	<i>Lythrum hyssopifolia</i>	hyssop loosestrife		no	
	Malvaceae	<i>Sidalcea malviflora</i> ssp. <i>malviflora</i>	checker mallow		yes	
	Montiaceae	<i>Calandrinia ciliata</i>	red maid	Portulacaceae	yes	
	Myricaceae	<i>Morella californica</i>	California wax myrtle	<i>Myrica californica</i>	yes	76
	Myrsinaceae	<i>Anagallis arvensis</i>	scarlet pimpernel	Primulaceae	no	
	Onagraceae	<i>Clarkia amoena</i>	farewell-to-spring		yes	77
		<i>Epilobium ciliatum</i>	fringed willowherb		yes	78
		<i>Camissonia ovata</i>	sun cup		yes	
	Orobanchaceae	<i>Castilleja affinis</i> ssp. <i>affinis</i>	Marin coast paint-brush	Scrophulariaceae	yes	
		<i>Parentucellia viscosa</i>	yellow glandweed	Scrophulariaceae	no	
	Papaveraceae	<i>Eschscholzia californica</i>	California poppy		yes	79
	Phrymaceae	<i>Mimulus aurantiacus</i>	bush monkeyflower	Scrophulariaceae	yes	80
		<i>Mimulus guttatus</i>	large monkeyflower	Scrophulariaceae	yes	81
	Plantaginaceae	<i>Plantago erecta</i>	California plantain		yes	82
		<i>Plantago lanceolata</i>	English plantain		no	83
		<i>Plantago subnuda</i>	tall coastal plantain		yes	84

GROUP	FAMILY	SCIENTIFIC NAME	COMMON NAME	Former Family or Latin Binomial	NATIVE	Page #
	Plantaginaceae	Veronica americana	American speedwell	Scrophulariaceae	yes	85
	Polemoniaceae	Navarretia squarrosa	skunkweed		no	
	Polygonaceae	Eriogonum latifolium	coast buckwheat		yes	86
		Eriogonum nudum	nude buckwheat		yes	
		Rumex acetosella	sheep sorrel		no	87
		Rumex pulcher	fiddle dock		no	88
		Rumex conglomeratus	clustered dock		no	89
	Ranunculaceae	Ranunculus californicus	California buttercup		yes	90
	Rosaceae	Acaena pinnatifida var. californica	California acaena		yes	91
		Fragaria vesca	wood strawberry		yes	
		Horkelia californica	California horkelia		yes	92
		Physocarpus capitatus	ninebark		yes	93
		Potentilla anserina spp. pacifica	silverweed cinquefoil		yes	94
		Rosa eglanteria	eglantine rose		no	
	Rubus ursinus	California blackberry		yes	95	
Rubiaceae	Sherardia arvensis	field madder		no	96	
Scrophulariaceae	Scrophularia californica	bee plant		yes	97	
Violaceae	Viola adunca	early blue violet		yes	98	
ANGIOSPERMS/MONOCOTS	Agavaceae	Chlorogalum pomeridianum	soap plant	Liliaceae	yes	99
	Cyperaceae	Carex barbarae	Santa Barbara sedge		yes	100
		Carex densa	dense sedge		yes	101
		Carex gynodynamis	Olney's hairy sedge		yes	102
		Carex harfordii	Harford's sedge		yes	
		Carex obnupta	slough sedge		yes	103
		Carex subbracteata	smallbract sedge		yes	104
		Carex tumulicola	foothill sedge		yes	105
	Iridaceae	Iris douglasiana	Douglas's iris		yes	106
		Sisyrinchium bellum	blue-eyed grass		yes	107
	Juncaceae	Juncus bolanderi	Bolander's rush		yes	
		Juncus bufonius var. bufonius	toad rush		yes	108
		Juncus capitatus	leafybract dwarf rush		no	
		Juncus effusus var. brunneus	soft rush		yes	109
		Juncus occidentalis	western rush		yes	110
		Juncus patens	spreading rush		yes	111
		Juncus phaeocephalus	brownhead rush		yes	112
		Luzula comosa	hairy wood rush		yes	113
	Liliaceae	Calochortus tolmiei	pussy ears		yes	
	Poaceae	Agrostis gigantea	redtop bentgrass		no	114
Agrostis sp.		bentgrass		?		
Agrostis hallii		Hall's bentgrass		yes	115	

GROUP	FAMILY	SCIENTIFIC NAME	COMMON NAME	Former Family or Latin Binomial	NATIVE	Page #	
ANGIOSPERMS/MONOCOTS	Poaceae (continued)	<i>Aira caryophylla</i>	silver European hairgrass		no	116	
		<i>Anthoxanthum odoratum</i>	sweet vernal grass		no	117	
		<i>Avena barbata</i>	slender wild oat		no	118	
		<i>Brachypodium distachyon</i>	false brome		no	119	
		<i>Briza maxima</i>	rattlesnake grass		no	120	
		<i>Briza minor</i>	little quaking grass		no	121	
		<i>Bromus carinatus</i> var. <i>carinatus</i>	California brome		yes	122	
		<i>Bromus diandrus</i>	ripgut brome		no	123	
		<i>Bromus hordeaceus</i>	soft chess		no	124	
		<i>Bromus madritensis</i> ssp. <i>madritensis</i>	foxtail chess		no		
		<i>Cynosurus echinatus</i>	hedgehog dogtail		no	125	
		<i>Dactylis glomerata</i>	orchard grass		no	126	
		<i>Danthonia californica</i> var. <i>californica</i>	California oatgrass		yes	127	
		<i>Deschampsia cespitosa</i> ssp.	tufted hairgrass		yes	128	
		<i>Deschampsia cespitosa</i> ssp. <i>holciformis</i>	tufted hairgrass		yes		
		<i>Distichlis spicata</i>	saltgrass		yes	129	
		<i>Elymus glaucus</i> ssp. <i>glaucus</i>	blue wildrye		yes	130	
		<i>Ehrharta erecta</i>	panic veldtgrass		no	131	
		<i>Festuca idahoensis</i>	Idaho fescue		yes		
		<i>Holcus lanatus</i>	velvet grass		no	132	
		<i>Hordeum brachyantherum</i> ssp. <i>brachyantherum</i>	meadow barley		yes	133	
		<i>Hordeum marinum</i> ssp. <i>gussoneanum</i>	Mediterranean barley		no	134	
		<i>Hordeum murinum</i>	mouse barley		no	135	
		<i>Koeleria macrantha</i>	Junegrass		yes	136	
		<i>Lolium multiflorum</i>	Italian ryegrass		no		
		<i>Lolium perenne</i>	perennial ryegrass		no	137	
		<i>Nassella lepida</i>	foothill needlegrass		yes		
		<i>Nassella pulchra</i>	purple needlegrass		yes	138	
		<i>Poa annua</i>	annual bluegrass		no		
		<i>Poa pratensis</i> ssp. <i>pratensis</i>	Kentucky bluegrass		no	139	
		<i>Poa unilateralis</i>	ocean-bluff bluegrass		yes		
		<i>Polypogon monspeliensis</i>	annual beard grass		no	140	
		<i>Rytidosperma penicillatum</i>	hairy oatgrass		no	141-142	
		<i>Schedonorus arundinaceus</i>	tall fescue		no		
		<i>Taeniatherum caput-medusae</i>	Medusahead		no		
		<i>Vulpia bromoides</i>	six-week's fescue		no	143	
		Themidaceae	<i>Brodiaea terrestris</i> ssp. <i>terrestris</i>	ground brodiaea	Liliaceae	yes	144
			<i>Triteleia laxa</i>	lithurial's spear	Liliaceae	yes	145

FAMILY

Blechnaceae

SCIENTIFIC NAME

Woodwardia fimbriata

COMMON NAME

giant chain fern

NATIVE

yes

LOCATION

Estero Americano Preserve

COLLECTION DATE

July 27, 2010





FAMILY

Dennstaedtiaceae

SCIENTIFIC NAME

Pteridium aquilinum

COMMON NAME

bracken

NATIVE

yes

LOCATION

Estero Americano Preserve

COLLECTION DATE

End of May-Early June 2009

**FAMILY**

Dryopteridaceae

SCIENTIFIC NAME

Polystichum munitum

COMMON NAME

western sword fern

NATIVE

yes

LOCATION

Estero Americano Preserve

COLLECTION DATE

End of May-Early June 2009

FAMILY

Equisetaceae

SCIENTIFIC NAME

Equisetum telmateia
ssp. Braunii

COMMON NAME

giant horsetail

NATIVE

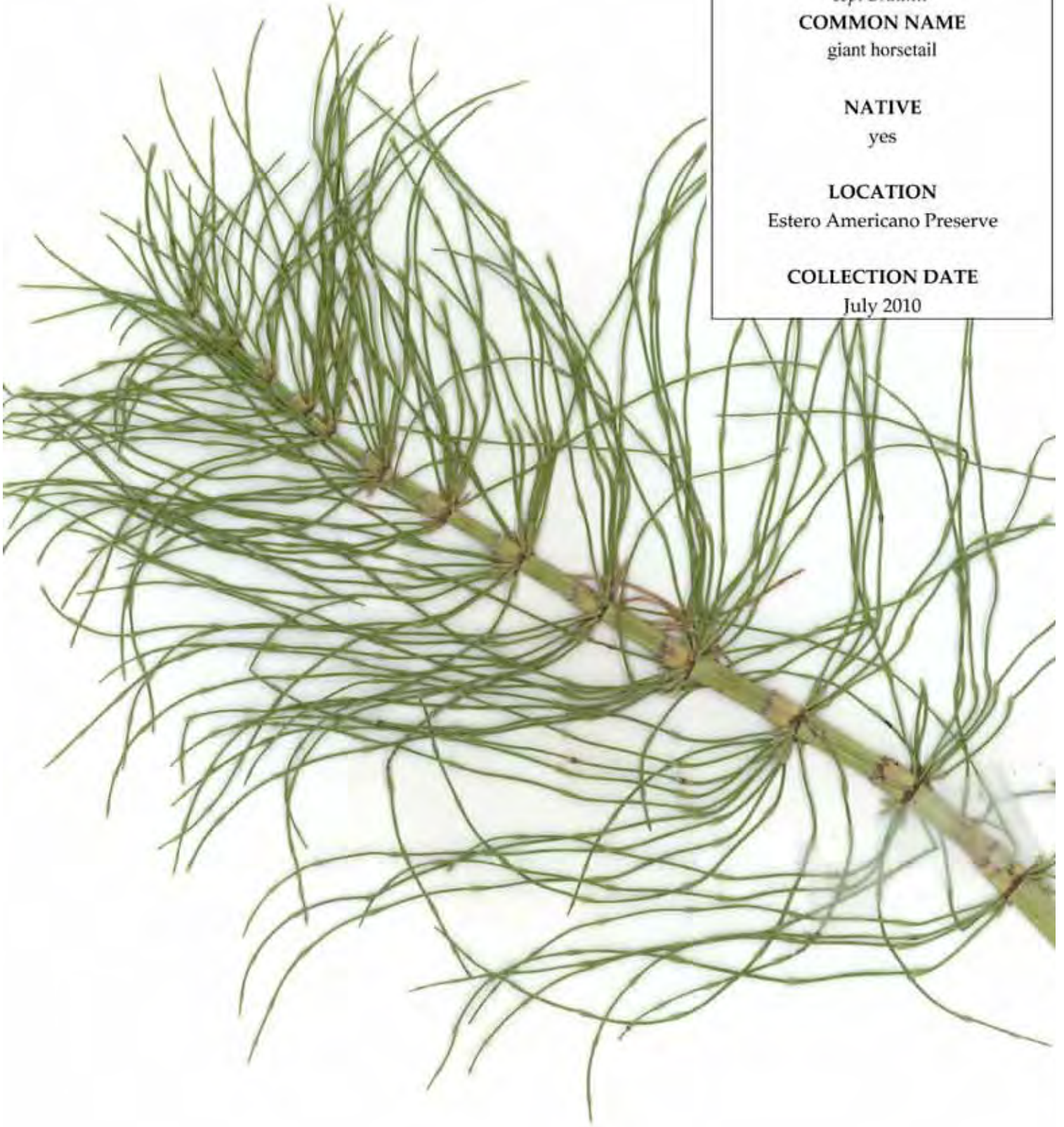
yes

LOCATION

Estero Americano Preserve

COLLECTION DATE

July 2010



**FAMILY**

Woodsiaceae

SCIENTIFIC NAME*Athyrium filix-femina*
*var. cylosorum***COMMON NAME**

common lady fern

NATIVE

yes

LOCATION

Estero Americano Preserve

COLLECTION DATE

July 2010



FAMILY

Apiaceae

SCIENTIFIC NAME

Conium maculatum

COMMON NAME

poison hemlock

NATIVE

no

LOCATION

Estero Americano Preserve

COLLECTION DATE

End of May-Early June 2009



FAMILY

Apiaceae

SCIENTIFIC NAME

Daucus pusillus

COMMON NAME

rattlesnake weed

NATIVE

yes

LOCATION

Estero Americano Preserve

COLLECTION DATE

End of May-Early June 2009

FAMILY

Apiaceae

SCIENTIFIC NAME

Eryngium armatum

COMMON NAME

armed coyote thistle

NATIVE

yes

LOCATION

Estero Americano Preserve

COLLECTION DATE

July 27, 2010



FAMILY

Apiaceae

SCIENTIFIC NAME

Lomatium utriculatum

COMMON NAME

spring gold lomatium

NATIVE

yes

LOCATION

Estero Americano Preserve

COLLECTION DATE

End of May-Early June 2010





FAMILY

Asteraceae

SCIENTIFIC NAME

Achillea millefolium

COMMON NAME

yarrow

NATIVE

yes

LOCATION

Estero Americano Preserve

COLLECTION DATE

End of May-Early June 2009

FAMILY

Asteraceae

SCIENTIFIC NAME

Atremisia douglasiana

COMMON NAME

Douglas's mugwort

NATIVE

yes

LOCATION

Estero Americano Preserve

COLLECTION DATE

July 2010





FAMILY

Asteraceae

SCIENTIFIC NAME

Baccharis pilularis

COMMON NAME

coyote brush

NATIVE

yes

LOCATION

Estero Americano Preserve

COLLECTION DATE

End of May-Early June 2009



FAMILY

Asteraceae

SCIENTIFIC NAME

Bellis perennis

COMMON NAME

English daisy

NATIVE

no

LOCATION

Esteró Americano Preserve

COLLECTION DATE

End of May-Early June 2009

FAMILY

Asteraceae

SCIENTIFIC NAME

Carduus pycnocephalus

COMMON NAME

Italian thistle

NATIVE

no

LOCATION

Estero Americano Preserve

COLLECTION DATE

End of May-Early June 2009



FAMILY

Asteraceae

SCIENTIFIC NAME

Cirsium quercetorum

COMMON NAME

brownie thistle

NATIVE

yes

LOCATION

Estero Americano Preserve

COLLECTION DATE

End of May-Early June 2009





FAMILY

Asteraceae

SCIENTIFIC NAME

Cirsium vulgare

COMMON NAME

bull thistle

NATIVE

no

LOCATION

Estero Americano Preserve

COLLECTION DATE

End of May-Early June 2009

FAMILY

Asteraceae

SCIENTIFIC NAME

Cotula coronopifolia

COMMON NAME

brass buttons

NATIVE

no

LOCATION

Estero Americano Preserve

COLLECTION DATE

July 27, 2010



FAMILY

Asteraceae

SCIENTIFIC NAME

Logfia gallica

COMMON NAME

narrowleaf cottonrose

NATIVE

no

LOCATION

Estero Americano Preserve

COLLECTION DATE

End of May-Early June 2009



FAMILY

Asteraceae

SCIENTIFIC NAME

Gnaphalium purpureum

COMMON NAME

purple cudweed

NATIVE

yes

LOCATION

Estero Americano Preserve

COLLECTION DATE

End of May-Early June 2009



FAMILY

Asteraceae

SCIENTIFIC NAME

Grindelia stricta

COMMON NAME

gumplant

NATIVE

yes

LOCATION

Estero Americano Preserve

COLLECTION DATE

July 27, 2010



FAMILY

Asteraceae

SCIENTIFIC NAME

Helenium puberulum

COMMON NAME

sneeze-weed

NATIVE

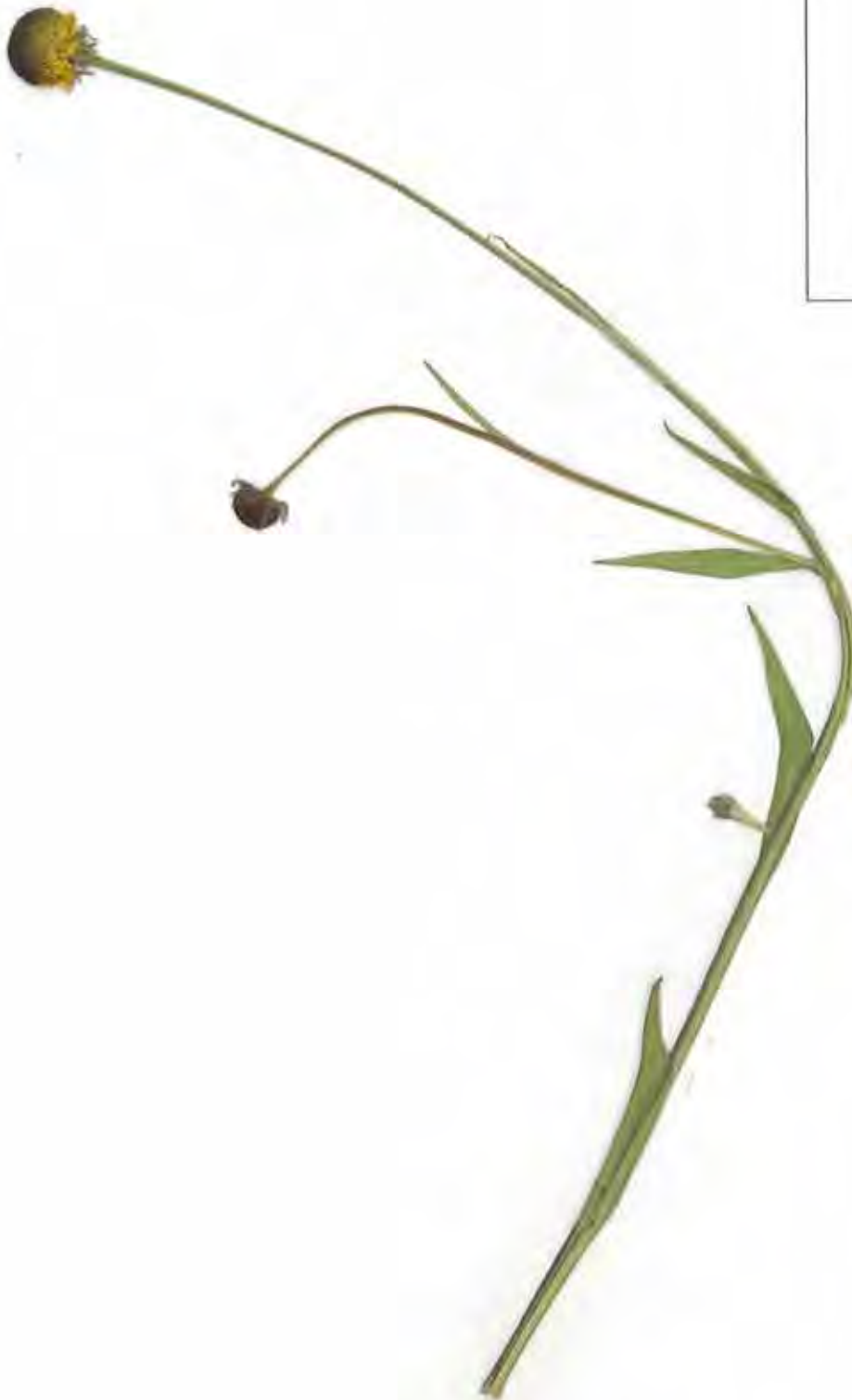
yes

LOCATION

Estero Americano Preserve

COLLECTION DATE

July 27, 2010



FAMILY

Asteraceae

SCIENTIFIC NAME

Hypochaeris radicata

COMMON NAME

rough cat's ear

NATIVE

no

LOCATION

Estero Americano Preserve

COLLECTION DATE

May-early June 2009



**FAMILY**

Asteraceae

SCIENTIFIC NAME*Jaumea carnosa***COMMON NAME**

marsh jaumea

NATIVE

yes

LOCATION

Estero Americano Preserve

COLLECTION DATE

July 27, 2010



FAMILY

Asteraceae

SCIENTIFIC NAME

Madia gracilis

COMMON NAME

slender tarweed

grassy tarweed

NATIVE

yes

LOCATION

Estero Americano Preserve

COLLECTION DATE

July 2010



FAMILY

Asteraceae

SCIENTIFIC NAME

Madia sativa

COMMON NAME

coast tarweed

NATIVE

yes

LOCATION

Estero Americano Preserve

COLLECTION DATE

July 2010

FAMILY

Asteraceae

SCIENTIFIC NAME

Matricaria matricarioides

COMMON NAME

pineapple weed

NATIVE

no

LOCATION

Estero Americano Preserve

COLLECTION DATE

End of May-Early June 2009



FAMILY

Asteraceae

SCIENTIFIC NAME

Microseris bigelovii

COMMON NAME

silver puffs

NATIVE

yes

LOCATION

Estero Americano Preserve

COLLECTION DATE

End of May-Early June 2009





FAMILY
Asteraceae

SCIENTIFIC NAME
Pseudognaphalium ramosissimum

COMMON NAME
pink cudweed

NATIVE
yes

LOCATION
Estero Americano Preserve

COLLECTION DATE
July 27, 2010

FAMILY

Boraginaceae

SCIENTIFIC NAME

Heliotropium curassavicum

COMMON NAME

salt heliotrope

NATIVE

yes

LOCATION

Estero Americano Preserve

COLLECTION DATE

July 2010



FAMILY

Boraginaceae

SCIENTIFIC NAME

Myosotis discolor

COMMON NAME

changing forget-me-not

NATIVE

no

LOCATION

Estero Americano Preserve

COLLECTION DATE

End of May-Early June 2010



FAMILY
Brassicaceae

SCIENTIFIC NAME
Nasturtium officinale

COMMON NAME
watercress

NATIVE
yes

LOCATION
Estero Americano Preserve

COLLECTION DATE
July 2010





FAMILY
Caprifoliaceae

SCIENTIFIC NAME
symphoricarpos albus
var. laevigatus

COMMON NAME
common snowberry

NATIVE
yes

LOCATION
Estero Americano Preserve

COLLECTION DATE
July 2010

FAMILY

Caryophyllaceae

SCIENTIFIC NAME

Silene gallica

COMMON NAME

windmill pink

NATIVE

no

LOCATION

Estero Americano Preserve

COLLECTION DATE

End of May-Early June 2009





FAMILY

Caryophyllaceae

SCIENTIFIC NAME

Spergularia rubra

COMMON NAME

red sand-spurrey

NATIVE

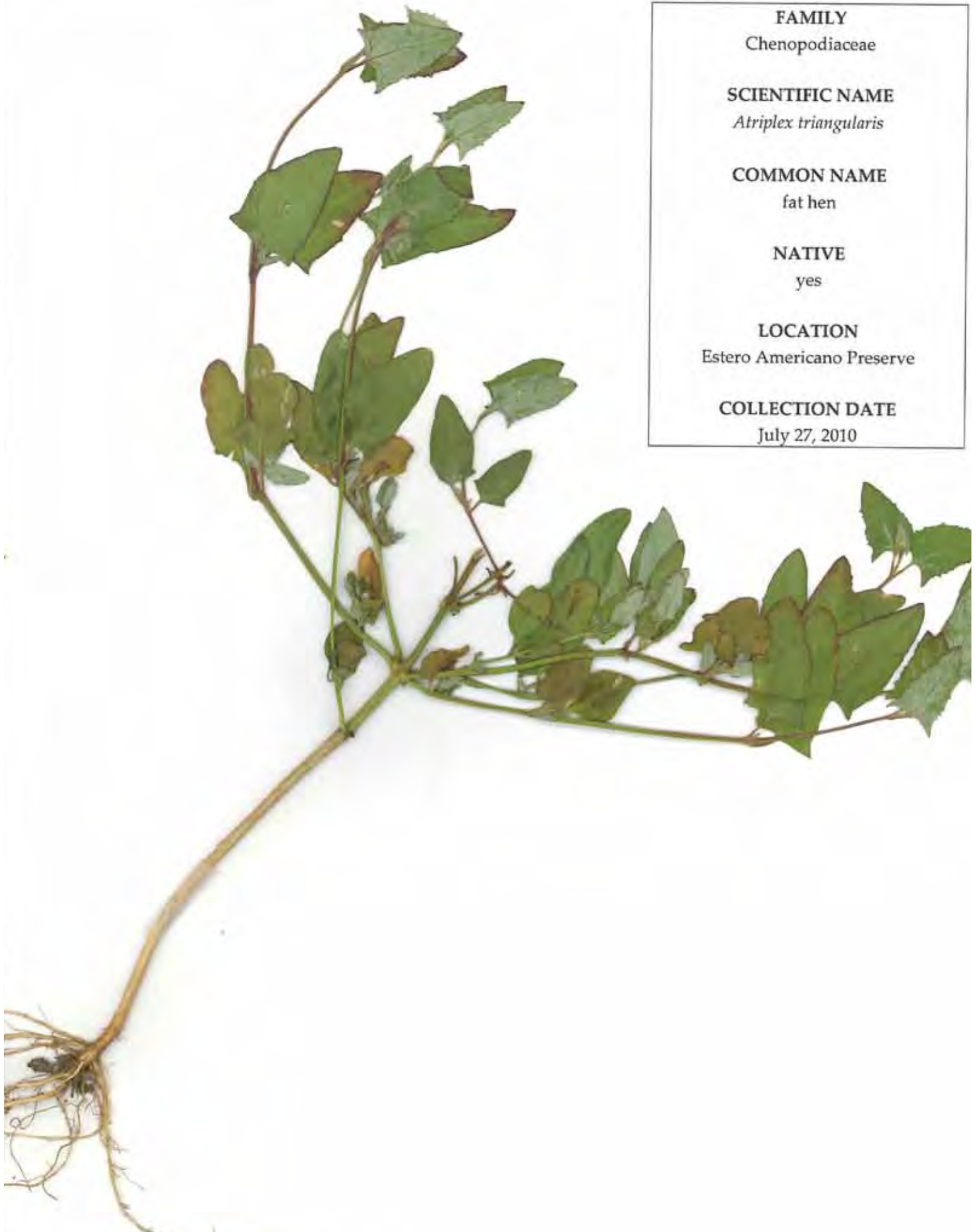
no

LOCATION

Estero Americano Preserve

COLLECTION DATE

July 2010



FAMILY

Chenopodiaceae

SCIENTIFIC NAME

Atriplex triangularis

COMMON NAME

fat hen

NATIVE

yes

LOCATION

Estero Americano Preserve

COLLECTION DATE

July 27, 2010

FAMILY

Chenopodiaceae

SCIENTIFIC NAME

Salicornia virginica

COMMON NAME

pickleweed

NATIVE

yes

LOCATION

Estero Americano Preserve

COLLECTION DATE

July 2010



FAMILY

Convulvaceae

SCIENTIFIC NAME*Calystegia subacaulis***COMMON NAME**

coast range false bindweed

NATIVE

yes

LOCATION

Estero Americano Preserve

COLLECTION DATE

End of May-Early June 2009



FAMILY

Convolvulaceae

SCIENTIFIC NAME

Convolvulus arvensis

COMMON NAME

bindweed

NATIVE

no

LOCATION

Estero Americano Preserve

COLLECTION DATE

End of May-Early June 2009





FAMILY

Crassulaceae

SCIENTIFIC NAME

Dudleya farinosa

COMMON NAME

powdery live-forever

NATIVE

yes

LOCATION

Estero Americano Preserve

COLLECTION DATE

July 2010

FAMILY

Cucurbitaceae

SCIENTIFIC NAME

Marah oreganus

COMMON NAME

coast man-root

NATIVE

yes

LOCATION

Estero Americano Preserve

COLLECTION DATE

End of May-Early June 2009



FAMILY

Fabaceae

SCIENTIFIC NAME

Acmispon parviflorus

COMMON NAME

miniature lotus

NATIVE

yes

LOCATION

Estero Americano Preserve

COLLECTION DATE

July 2010



FAMILY

Fabaceae

SCIENTIFIC NAME

Acmispon americanus

COMMON NAME

Pursh's lotus

NATIVE

yes

LOCATION

Estero Americano Preserve

COLLECTION DATE

July, 2010





FAMILY

Fabaceae

SCIENTIFIC NAME

Hosackia gracilis

COMMON NAME

harlequin lotus

NATIVE

yes

LOCATION

Estero Americano Preserve

COLLECTION DATE

End of May-Early June 2010

FAMILY

Fabaceae

SCIENTIFIC NAME

Lathyrus hirsutus

COMMON NAME

Caley pea

NATIVE

no

LOCATION

Estero Americano Preserve

COLLECTION DATE

July 2010



FAMILY

Fabaceae

SCIENTIFIC NAME

Lotus angustissimus

COMMON NAME

slender lotus

NATIVE

no

LOCATION

Estero Americano Preserve

COLLECTION DATE

End of May-Early June 2010





FAMILY

Fabaceae

SCIENTIFIC NAME

Lotus corniculatus

COMMON NAME

bird's-foot trefoil

NATIVE

no

LOCATION

Estero Americano Preserve

COLLECTION DATE

End of May-Early June 2009

FAMILY

Fabaceae

SCIENTIFIC NAME

Lupinus bicolor

COMMON NAME

miniature lupine

NATIVE

yes

LOCATION

Estero Americano Preserve

COLLECTION DATE

End of May-Early June 2009





FAMILY

Fabaceae

SCIENTIFIC NAME

Lupinus variicolor

COMMON NAME

varied lupine

NATIVE

yes

LOCATION

Estero Americano Preserve

COLLECTION DATE

May 26, 2010

FAMILY

Fabaceae

SCIENTIFIC NAME

Trifolium dubium

COMMON NAME

little hop clover

NATIVE

no

LOCATION

Estero Americano Preserve

COLLECTION DATE

End of May-Early June 2009



FAMILY

Fabaceae

SCIENTIFIC NAME

Trifolium macraei

COMMON NAME

Macrae's clover

NATIVE

yes

LOCATION

Estero Americano Preserve

COLLECTION DATE

End of May-Early June 2010



FAMILY

Fabaceae

SCIENTIFIC NAME*Trifolium subterraneum***COMMON NAME**

subterranean clover

NATIVE

no

LOCATION

Estero Americano Preserve

COLLECTION DATE

End of May-Early June 2009



FAMILY

Fabaceae

SCIENTIFIC NAME

Trifolium striatum

COMMON NAME

knotted clover

NATIVE

no

LOCATION

Estero Americano Preserve

COLLECTION DATE

End of May-Early June 2010



FAMILY

Fabaceae

SCIENTIFIC NAME

Trifolium wormskioldii

COMMON NAME

cow clover

NATIVE

yes

LOCATION

Estero Americano Preserve

COLLECTION DATE

July 27, 2010



FAMILY

Fabaceae

SCIENTIFIC NAME

Vicia hirsuta

COMMON NAME

tiny purple vetch

hirsute vetch

NATIVE

no

LOCATION

Estero Americano Preserve

COLLECTION DATE

End of May-Early June 2010





FAMILY

Fabaceae

SCIENTIFIC NAME

Vicia sativa

COMMON NAME

vetch

NATIVE

no

LOCATION

Estero Americano Preserve

COLLECTION DATE

End of May-Early June 2009



FAMILY

Fabaceae

SCIENTIFIC NAME

Vicia tetrasperma

COMMON NAME

lentil vetch

NATIVE

no

LOCATION

Estero Americano Preserve

COLLECTION DATE

July 2010

FAMILY

Frankeniaceae

SCIENTIFIC NAME

Frankenia salina

COMMON NAME

alkali seaheath

NATIVE

yes

LOCATION

Estero Americano Preserve

COLLECTION DATE

July 27, 2010



FAMILY
Gentianaceae

SCIENTIFIC NAME
Zeltnera muehlenbergii

COMMON NAME
Muhlenberg's centaury

NATIVE
yes

LOCATION
Estero Americano Preserve

COLLECTION DATE
July 27, 2010





FAMILY
Geraniaceae

SCIENTIFIC NAME
Geranium dissectum

COMMON NAME
cutleaf geranium

NATIVE
no

LOCATION
Estero Americano Preserve

COLLECTION DATE
End of May-Early June 2009



FAMILY

Grossulariaceae

SCIENTIFIC NAME

Ribes divaricatum

COMMON NAME

coast black gooseberry

NATIVE

yes

LOCATION

Estero Americano Preserve

COLLECTION DATE

July 2010

FAMILY

Lamiaceae

SCIENTIFIC NAME

Mentha pulegium

COMMON NAME

pennyroyal

NATIVE

no

LOCATION

Estero Americano Preserve

COLLECTION DATE

End of May-Early June 2009



FAMILY

Lamiaceae

SCIENTIFIC NAME

Monardella villosa spp. *Franciscana*

COMMON NAME

coyote mint

NATIVE

yes

LOCATION

Estero Americano Preserve

COLLECTION DATE

End of May-Early June 2010



FAMILY

Lamiaceae

SCIENTIFIC NAME

Stachys rigida var. *rigida*

COMMON NAME

rigid hedge-nettle

NATIVE

yes

LOCATION

Estero Americano Preserve

COLLECTION DATE

End of May-Early June 2009





FAMILY

Linaceae

SCIENTIFIC NAME

Linum bienne

COMMON NAME

pale flax

NATIVE

no

LOCATION

Estero Americano Preserve

COLLECTION DATE

End of May-Early June 2009

FAMILY

Myricaceae

SCIENTIFIC NAME*Morella californica***COMMON NAME**

California wax-myrtle

NATIVE

yes

LOCATION

Estero Americano Preserve

COLLECTION DATE

July 27, 2010



FAMILY

Onagraceae

SCIENTIFIC NAME

Clarkia amoena

COMMON NAME

farewell-to-spring

NATIVE

yes

LOCATION

Estero Americano Preserve

COLLECTION DATE

July 27, 2010





FAMILY

Onagraceae

SCIENTIFIC NAME

Epilobium ciliatum

COMMON NAME

fringed willowherb

NATIVE

yes

LOCATION

Estero Americano Preserve

COLLECTION DATE

July 27, 2010



FAMILY
Papaveraceae

SCIENTIFIC NAME
Eschscholzia californica

COMMON NAME
California poppy

NATIVE
yes

LOCATION
Estero Americano Preserve

COLLECTION DATE
End of May-Early June 2009

FAMILY

Phrymaceae

SCIENTIFIC NAME

Mimulus aurantiacus

COMMON NAME

sticky bush monkeyflower

NATIVE

yes

LOCATION

Estero Americano Preserve

COLLECTION DATE

End of May-Early June 2009



FAMILY

Phrymaceae

SCIENTIFIC NAME

Mimulus guttatus

COMMON NAME

common monkeyflower

NATIVE

yes

LOCATION

Estero Americano Preserve

COLLECTION DATE

July 27, 2010



FAMILY
Papaveraceae

SCIENTIFIC NAME
Plantago erecta

COMMON NAME
California plantain

NATIVE
yes

LOCATION
Estero Americano Preserve

COLLECTION DATE
End of May-Early June 2009





FAMILY

Plantaginaceae

SCIENTIFIC NAME

Plantago lanceolata

COMMON NAME

English plantain

NATIVE

no

LOCATION

Estero Americano Preserve

COLLECTION DATE

End of May-Early June 2009



FAMILY

Plantaginaceae

SCIENTIFIC NAME

Plantago subnuda

COMMON NAME

tall coastal plantain

NATIVE

yes

LOCATION

Estero Americano Preserve

COLLECTION DATE

July 2010

FAMILY

Plantaginaceae

SCIENTIFIC NAME

Veronica americana

COMMON NAME

American speedwell

NATIVE

yes

LOCATION

Estero Americano Preserve

COLLECTION DATE

July 27, 2010





FAMILY

Polygonaceae

SCIENTIFIC NAME

Eriogonum latifolium

COMMON NAME

coast buckwheat

NATIVE

yes

LOCATION

Estero Americano Preserve

COLLECTION DATE

End of May-Early June 2009



FAMILY

Polygonaceae

SCIENTIFIC NAME

Rumex acetosella

COMMON NAME

sheep sorrel

NATIVE

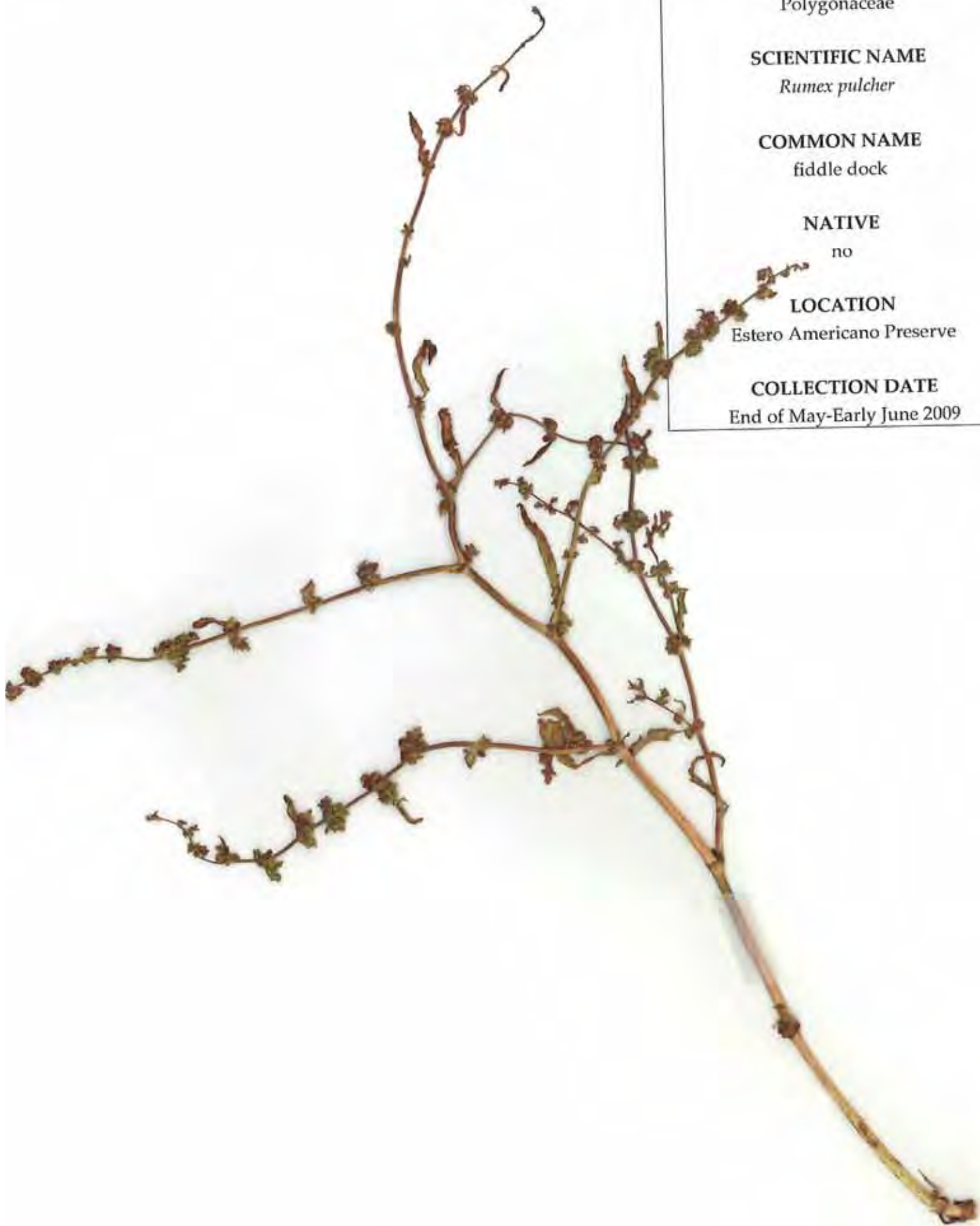
no

LOCATION

Estero Americano Preserve

COLLECTION DATE

End of May-Early June 2009



FAMILY

Polygonaceae

SCIENTIFIC NAME

Rumex pulcher

COMMON NAME

fiddle dock

NATIVE

no

LOCATION

Estero Americano Preserve

COLLECTION DATE

End of May-Early June 2009



FAMILY

Polygonaceae

SCIENTIFIC NAME

Rumex conglomeratus

COMMON NAME

clustered dock

NATIVE

no

LOCATION

Estero Americano Preserve

COLLECTION DATE

July 2010



FAMILY

Ranunculaceae

SCIENTIFIC NAME

Ranunculus californicus

COMMON NAME

california buttercup

NATIVE

yes

LOCATION

Estero Americano Preserve

COLLECTION DATE

End of May-Early June 2010

FAMILY

Rosaceae

SCIENTIFIC NAME

Acaena pinnatifida var. *californica*

COMMON NAME

California acaena

NATIVE

yes

LOCATION

Estero Americano Preserve

COLLECTION DATE

End of May-Early June 2009



FAMILY

Rosaceae

SCIENTIFIC NAME

Horkelia californica

COMMON NAME

California horkelia

NATIVE

yes

LOCATION

Estero Americano Preserve

COLLECTION DATE

July 27, 2010





FAMILY

Rosaceae

SCIENTIFIC NAME

Physocarpus capitatus

COMMON NAME

ninebark

NATIVE

yes

LOCATION

Estero Americano Preserve

COLLECTION DATE

July 27, 2010

FAMILY

Rosaceae

SCIENTIFIC NAME*Potentilla anserina ssp. pacifica***COMMON NAME**

silverweed cinquefoil

NATIVE

yes

LOCATION

Estero Americano Preserve

COLLECTION DATE

End of May-Early June 2010



FAMILY

Rosaceae

SCIENTIFIC NAME

Rubus ursinus

COMMON NAME

California blackberry

NATIVE

yes

LOCATION

Estero Americano Preserve

COLLECTION DATE

End of May-Early June 2009





FAMILY

Rubiaceae

SCIENTIFIC NAME

Sherardia arvensis

COMMON NAME

field madder

NATIVE

no

LOCATION

Estero Americano Preserve

COLLECTION DATE

End of May-Early June 2009



FAMILY

Scrophulariaceae

SCIENTIFIC NAME

Scrophularia californica

COMMON NAME

bee plant

NATIVE

yes

LOCATION

Estero Americano Preserve

COLLECTION DATE

End of May-Early June 2009

FAMILY

Violaceae

SCIENTIFIC NAME

Viola adunca

COMMON NAME

early blue violet

NATIVE

yes

LOCATION

Estero Americano Preserve

COLLECTION DATE

End of May-Early June 2009





FAMILY

Agavaceae

SCIENTIFIC NAME

Chlorogalum pomeridianum

COMMON NAME

soap plant

NATIVE

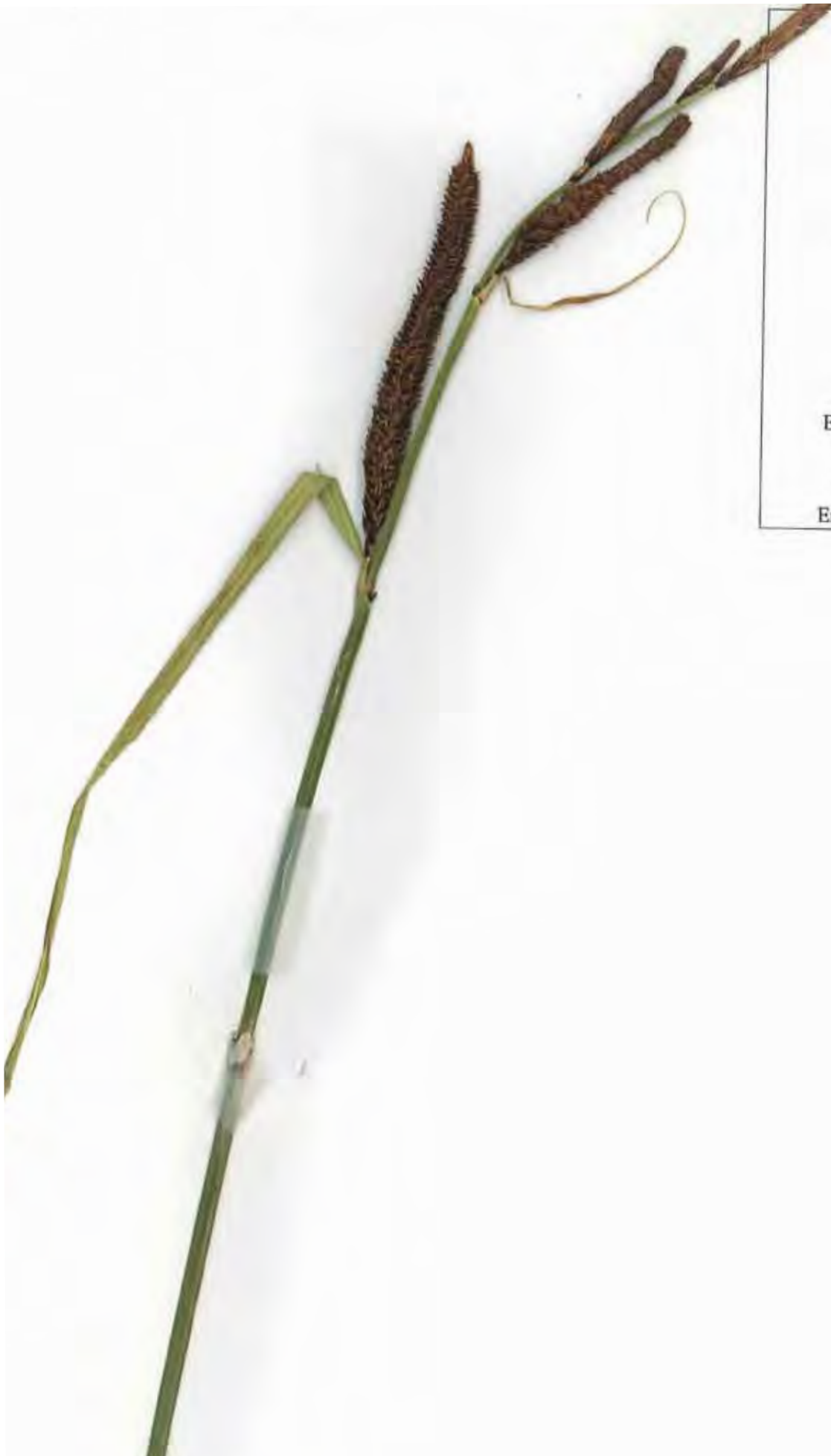
yes

LOCATION

Estero Americano Preserve

COLLECTION DATE

End of May-Early June 2009



FAMILY
Cyperaceae

SCIENTIFIC NAME
Carex barbarae

COMMON NAME
Santa Barbara sedge

NATIVE
yes

LOCATION
Estero Americano Preserve

COLLECTION DATE
End of May-Early June 2009



FAMILY

Cyperaceae

SCIENTIFIC NAME

Carex densa

COMMON NAME

dense sedge

NATIVE

yes

LOCATION

Estero Americano Preserve

COLLECTION DATE

End of May-Early June 2009



FAMILY
Cyperaceae

SCIENTIFIC NAME
Carex gynodynamis

COMMON NAME
Olney's hairy sedge

NATIVE
yes

LOCATION
Estero Americano Preserve

COLLECTION DATE
End of May-Early June 2010



FAMILY
Cyperaceae

SCIENTIFIC NAME
Carex obnupta

COMMON NAME
slough sedge

NATIVE
yes

LOCATION
Estero Americano Preserve

COLLECTION DATE
July 2010

FAMILY

Cyperaceae

SCIENTIFIC NAME

Carex subbracteata

COMMON NAME

smallbract sedge

NATIVE

yes

LOCATION

Estero Americano Preserve

COLLECTION DATE

End of May-Early June 2009



FAMILY
Cyperaceae

SCIENTIFIC NAME
Carex tumulicola

COMMON NAME
foothill sedge

NATIVE
yes

LOCATION
Estero Americano Preserve

COLLECTION DATE
End of May-Early June 2009





FAMILY

Iridaceae

SCIENTIFIC NAME

Iris douglasiana

COMMON NAME

douglas's iris

NATIVE

yes

LOCATION

Estero Americano Preserve

COLLECTION DATE

End of May-Early June 2009

FAMILY

Iridaceae

SCIENTIFIC NAME

Sisyrinchium bellum

COMMON NAME

blue-eyed grass

NATIVE

yes

LOCATION

Estero Americano Preserve

COLLECTION DATE

July 27, 2010



FAMILY

Juncaceae

SCIENTIFIC NAME

Juncus bufonius

COMMON NAME

toad rush

NATIVE

yes

LOCATION

Estero Americano Preserve

COLLECTION DATE

End of May-Early June 2010





FAMILY

Juncaceae

SCIENTIFIC NAME

Juncus effusus var. *brumeus*

COMMON NAME

soft rush

NATIVE

yes

LOCATION

Estero Americano Preserve

COLLECTION DATE

End of May-Early June 2009



FAMILY
Juncaceae

SCIENTIFIC NAME
Juncus occidentalis

COMMON NAME
western rush

NATIVE
yes

LOCATION
Estero Americano Preserve

COLLECTION DATE



FAMILY

Juncaceae

SCIENTIFIC NAME

Juncus patens

COMMON NAME

spreading rush

NATIVE

yes

LOCATION

Estero Americano Preserve

COLLECTION DATE

July 27, 2010



FAMILY

Juncaceae

SCIENTIFIC NAME

Juncus phaeocephalus

COMMON NAME

brownhead rush

NATIVE

yes

LOCATION

Estero Americano Preserve

COLLECTION DATE

July 27, 2010



FAMILY

Juncaceae

SCIENTIFIC NAME

Luzula comosa

COMMON NAME

hairy wood rush

NATIVE

yes

LOCATION

Estero Americano Preserve

COLLECTION DATE

End of May-Early June 2009





FAMILY

Poaceae

SCIENTIFIC NAME

Agrostis gigantea

COMMON NAME

redtop bentgrass

NATIVE

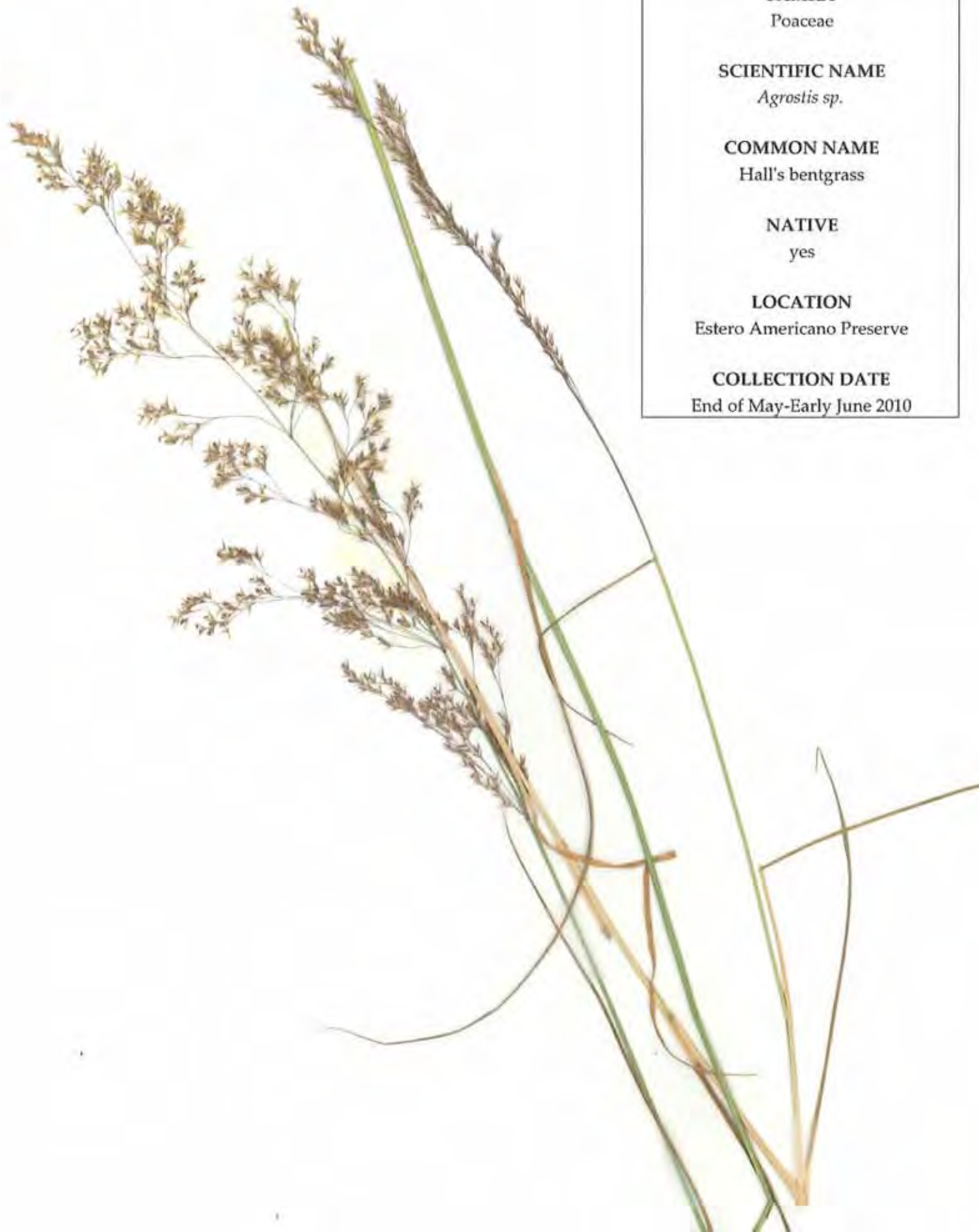
no

LOCATION

Estero Americano Preserve

COLLECTION DATE

July 27, 2010



FAMILY

Poaceae

SCIENTIFIC NAME

Agrostis sp.

COMMON NAME

Hall's bentgrass

NATIVE

yes

LOCATION

Estero Americano Preserve

COLLECTION DATE

End of May-Early June 2010

FAMILY

Poaceae

SCIENTIFIC NAME

Aira caryophyllea

COMMON NAME

silver European hairgrass

NATIVE

no

LOCATION

Estero Americano Preserve

COLLECTION DATE



FAMILY

Poaceae

SCIENTIFIC NAME

Anthoxanthum odoratum

COMMON NAME

sweet vernal grass

NATIVE

no

LOCATION

Estero Americano Preserve

COLLECTION DATE

End of May-Early June 2010





FAMILY

Poaceae

SCIENTIFIC NAME

Avena barbata

COMMON NAME

slender wild oat

NATIVE

no

LOCATION

Estero Americano Preserve

COLLECTION DATE

FAMILY

Poaceae

SCIENTIFIC NAME

Brachypodium distachyon

COMMON NAME

false brome

NATIVE

no

LOCATION

Estero Americano Preserve

COLLECTION DATE

End of May-Early June 2009





FAMILY

Poaceae

SCIENTIFIC NAME

Briza maxima

COMMON NAME

rattlesnake grass

NATIVE

no

LOCATION

Estero Americano Preserve

COLLECTION DATE

End of May-Early June 2009

FAMILY

Poaceae

SCIENTIFIC NAME

Briza minor

COMMON NAME

little quaking grass

NATIVE

no

LOCATION

Estero Americano Preserve

COLLECTION DATE

End of May-Early June 2009



FAMILY

Poaceae

SCIENTIFIC NAME

Bromus carinatus var. *carinatus*

COMMON NAME

California brome

NATIVE

yes

LOCATION

Estero Americano Preserve

COLLECTION DATE

July 27, 2010





FAMILY

Poaceae

SCIENTIFIC NAME

Bromus diandrus

COMMON NAME

ripgut brome

NATIVE

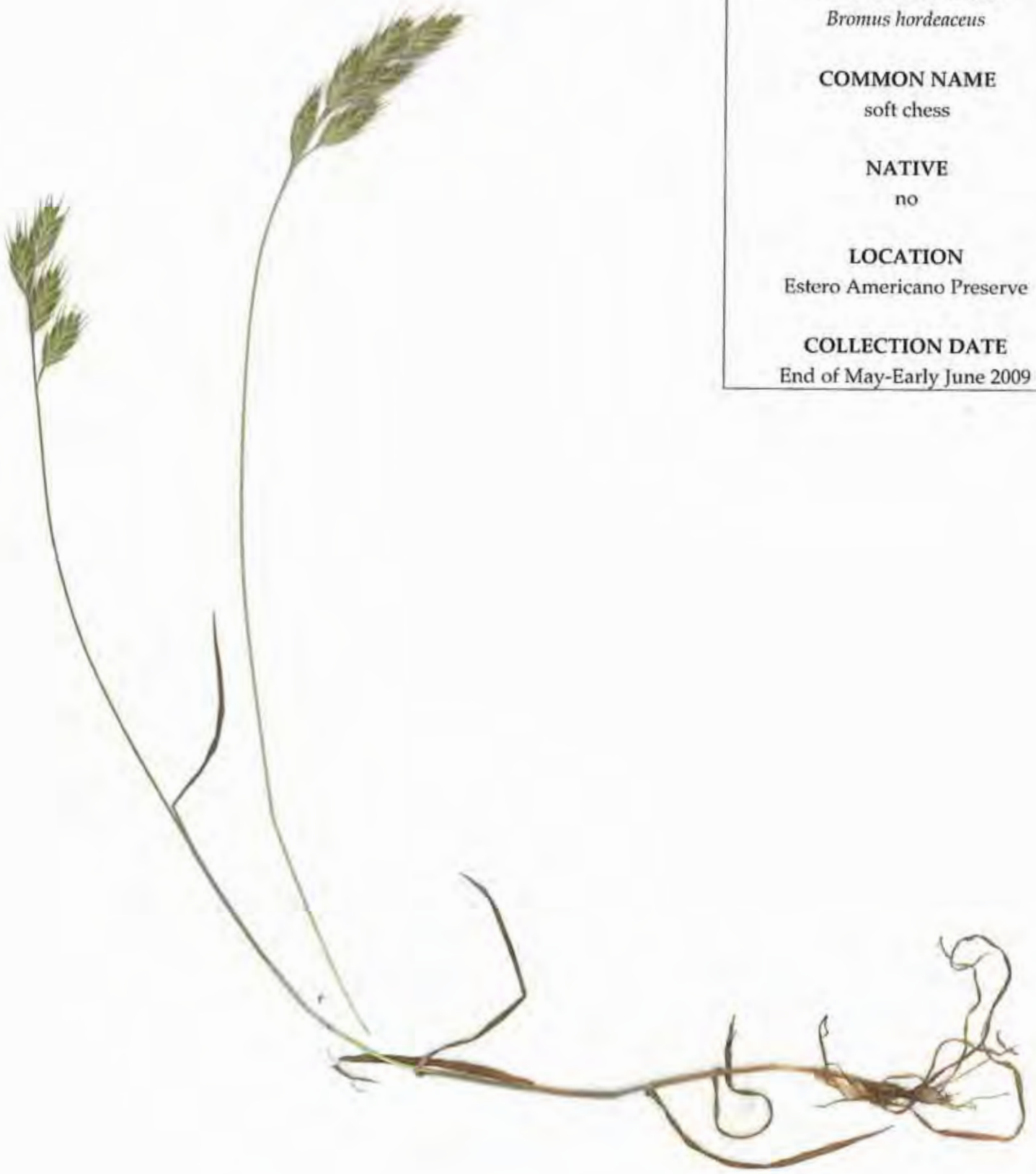
no

LOCATION

Estero Americano Preserve

COLLECTION DATE

End of May-Early June 2009



FAMILY

Poaceae

SCIENTIFIC NAME

Bromus hordeaceus

COMMON NAME

soft chess

NATIVE

no

LOCATION

Estero Americano Preserve

COLLECTION DATE

End of May-Early June 2009



FAMILY

Poaceae

SCIENTIFIC NAME

Cynosurus echinatus

COMMON NAME

hedgehog dogtail

NATIVE

no

LOCATION

Estero Americano Preserve

COLLECTION DATE

End of May-Early June 2009

**FAMILY**

Poaceae

SCIENTIFIC NAME*Dactylis glomerata***COMMON NAME**

orchard grass

NATIVE

no

LOCATION

Estero Americano Preserve

COLLECTION DATE

End of May-Early June 2009



FAMILY

Poaceae

SCIENTIFIC NAME

Danthonia californica var. *californica*

COMMON NAME

california oatgrass

NATIVE

yes

LOCATION

Estero Americano Preserve

COLLECTION DATE

End of May-Early June 2009



FAMILY

Poaceae

SCIENTIFIC NAME

Deschampsia cespitosa ssp. *cespitosa*

COMMON NAME

tufted hairgrass

NATIVE

yes

LOCATION

Estero Americano Preserve

COLLECTION DATE

End of May-Early June 2009

FAMILY

Poaceae

SCIENTIFIC NAME

Distichlis spicata

COMMON NAME

saltgrass

NATIVE

yes

LOCATION

Estero Americano Preserve

COLLECTION DATE

July 2010



**FAMILY**

Poaceae

SCIENTIFIC NAME*Elymus glaucus* ssp. *glaucus***COMMON NAME**

blue wildrye

NATIVE

yes

LOCATION

Estero Americano Preserve

COLLECTION DATE

End of May-Early June 2009



FAMILY

Poaceae

SCIENTIFIC NAME

Ehrharta erecta

COMMON NAME

panic veldtgrass

NATIVE

no

LOCATION

Estero Americano Preserve

COLLECTION DATE

July 27, 2010



FAMILY

Poaceae

SCIENTIFIC NAME

Holcus lanatus

COMMON NAME

velvet grass

NATIVE

no

LOCATION

Estero Americano Preserve

COLLECTION DATE

End of May-Early June 2009

FAMILY
Poaceae

SCIENTIFIC NAME
Hordeum brachyantherum

COMMON NAME
meadow barley

NATIVE
yes

LOCATION
Estero Americano Preserve

COLLECTION DATE
End of May-Early June 2010



FAMILY

Poaceae

SCIENTIFIC NAME

Hordeum marinum ssp. *gussoneanum*

COMMON NAME

barley

NATIVE

no

LOCATION

Estero Americano Preserve

COLLECTION DATE





FAMILY

Poaceae

SCIENTIFIC NAME

Hordeum murinum

COMMON NAME

mouse barley

NATIVE

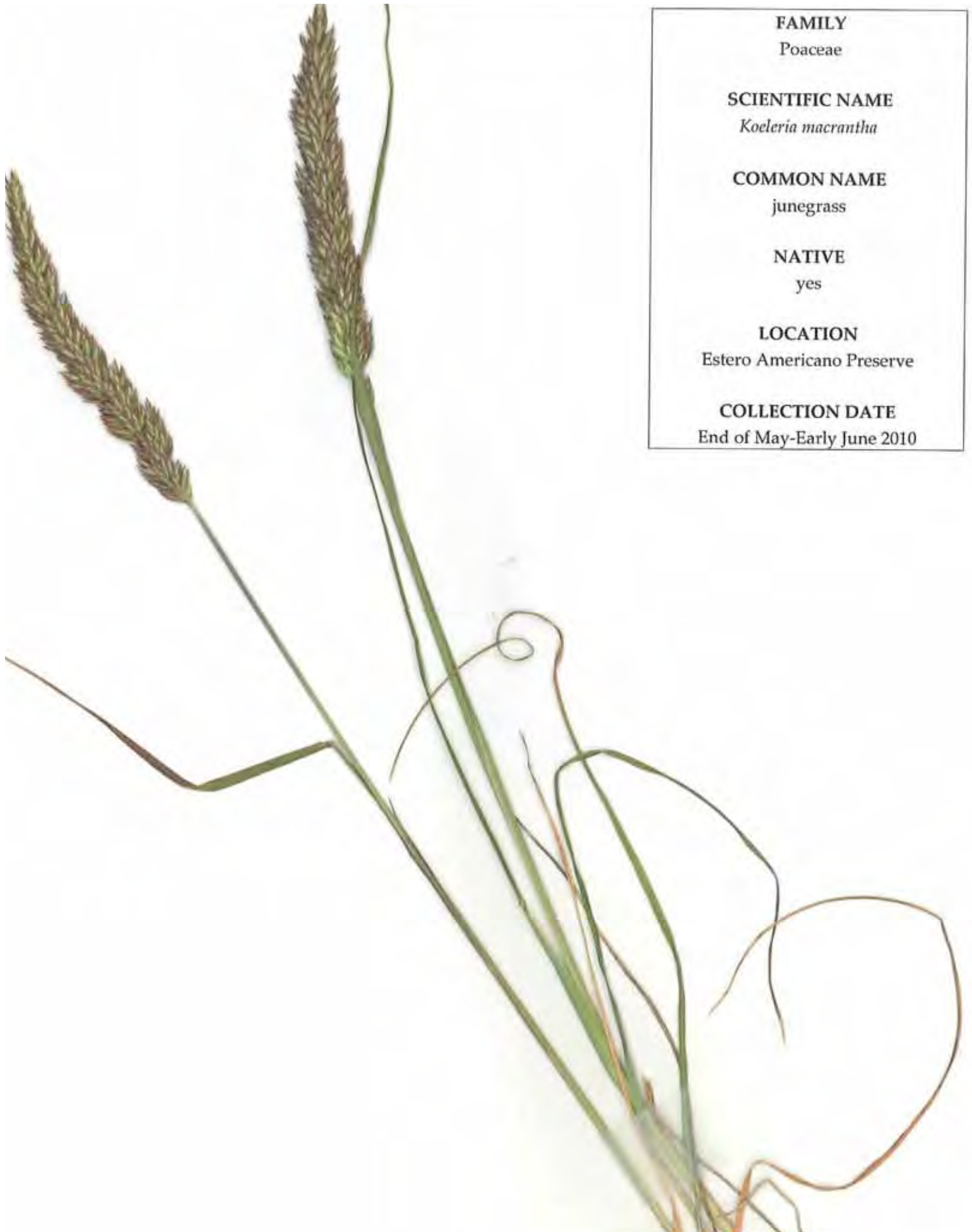
no

LOCATION

Estero Americano Preserve

COLLECTION DATE

End of May-Early June 2009



FAMILY

Poaceae

SCIENTIFIC NAME

Koeleria macrantha

COMMON NAME

junegrass

NATIVE

yes

LOCATION

Estero Americano Preserve

COLLECTION DATE

End of May-Early June 2010



FAMILY

Poaceae

SCIENTIFIC NAME

Lolium perenne

COMMON NAME

perennial ryegrass

NATIVE

no

LOCATION

Estero Americano Preserve

COLLECTION DATE

End of May-Early June 2009



FAMILY

Poaceae

SCIENTIFIC NAME

Nassella pulchra

COMMON NAME

purple needlegrass

NATIVE

yes

LOCATION

Estero Americano Preserve

COLLECTION DATE

End of May-Early June 2010



FAMILY

Poaceae

SCIENTIFIC NAME

Poa pratensis ssp. pratensis

COMMON NAME

Kentucky bluegrass

NATIVE

no

LOCATION

Estero Americano Preserve

COLLECTION DATE

End of May-Early June 2009



FAMILY

Poaceae

SCIENTIFIC NAME

Polypogon monspeliensis

COMMON NAME

annual beardgrass

NATIVE

no

LOCATION

Estero Americano Preserve

COLLECTION DATE

July 2010



FAMILY

Poaceae

SCIENTIFIC NAME

Rytidosperma penicillatum

COMMON NAME

hairy oatgrass

NATIVE

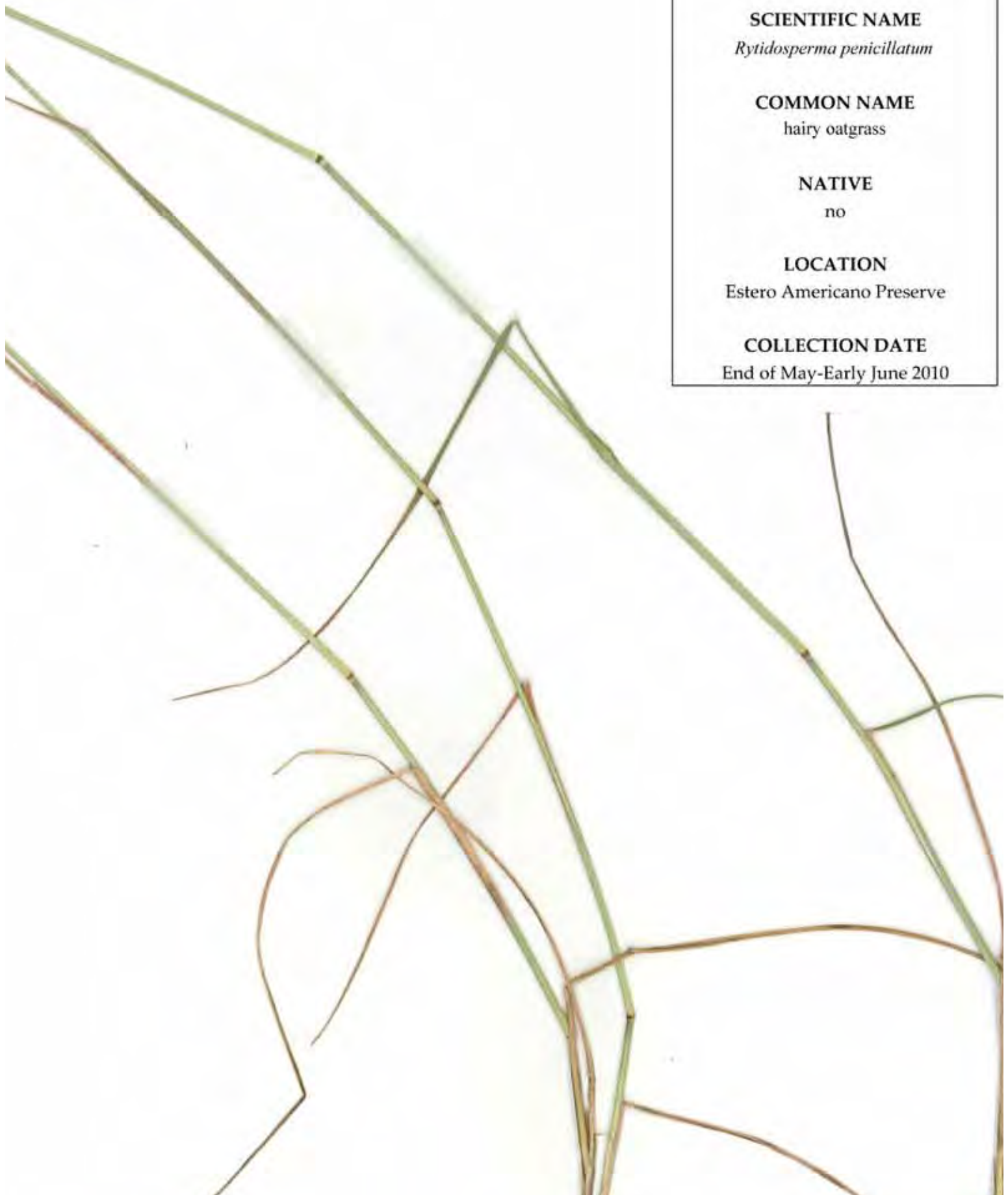
no

LOCATION

Estero Americano Preserve

COLLECTION DATE

End of May-Early June 2010



FAMILY

Poaceae

SCIENTIFIC NAME

Rytidosperma penicillatum

COMMON NAME

hairy oatgrass

NATIVE

no

LOCATION

Estero Americano Preserve

COLLECTION DATE

End of May-Early June 2010



FAMILY

Poaceae

SCIENTIFIC NAME

Vulpia bromoides

COMMON NAME

six-week's fescue

NATIVE

no

LOCATION

Estero Americano Preserve

COLLECTION DATE

End of May-Early June 2009

FAMILY

Themidaceae

SCIENTIFIC NAME

Brodiaea terrestris ssp. *terrestris*

COMMON NAME

ground brodiaea

NATIVE

yes

LOCATION

Estero Americano Preserve

COLLECTION DATE

End of May-Early June 2009





FAMILY

Themidaceae

SCIENTIFIC NAME

Triteleia laxa

COMMON NAME

Ithuriel's spear

NATIVE

yes

LOCATION

Estero Americano Preserve

COLLECTION DATE

End of May-Early June 2010

Sonoma Land Trust

Copyright © 2011 Sonoma Land Trust



966 Sonoma Avenue
Santa Rosa, CA 95404
www.SonomaLandTrust.org
(707) 526-6930
Fax: (707) 526-3001