



Click a Series to jump to page

Core

Formation / Headphones

Custom Theater

Custom Installation

Prestige Edition

Formation

CT 800 Series

CI 800 Series Diamond

800 Series Diamond

Headphones

CT 700 Series

CI 700 Series

DB Series Subwoofers

CI 600 Series

700 Series

CI 300 Series

600 Series

CI Subwoofers

Mini Theater

Marine/Outdoor

AM-1



Why Bowers & Wilkins?

Bowers & Wilkins leverages over 50 years of experience in building the finest loudspeakers, cherished by owners and used by recording professionals to create the music and movies we love. Whether you are composing a soundtrack, unwinding with your new favorite song or watching a movie with your family, Bowers & Wilkins can connect you with these experiences in a way you never thought possible. Listen and you'll see.

A FIVE-STAR LINEUP

50 Years of Excellence



Bowers & Wilkins is a global leader in sound with over 50 years experience in making the very best audio equipment in the world.

High Performance Solutions for any Application



Bowers & Wilkins' nearly invisible Custom Installation speakers are made by the same team as their world renowned in-room models and offer the same level of performance.

CHOSEN BY THE MOST ESTEEMED BRANDS

Recording Studios



From Abbey Road to Skywalker Sound, professionals all over the world trust Bowers & Wilkins to deliver music the way the artist intended.

Automotive



Bowers & Wilkins creates premium audio systems for some of the world's most prestigious car brands like BMW, Maserati, McLaren and Volvo.



PRESTIGE MODELS

Nautilus



Silver, Black, Midnight Blue
Nautilus can be finished in any color



Nautilus

Retail Price \$60,000.00 PAIR
Finish Custom finishes available
Description A design classic and flagship product, Nautilus is traditionally available in Silver, Black or Midnight Blue.

800 Series Prestige Edition



Santos Rosewood



802 Prestige Edition

\$12,499.99 EACH
 Santos Rosewood
 802 D3 with luxurious Santos Rosewood veneer. Limited edition with numbered plate.



805 Prestige Edition

\$3,499.99 EACH
 Santos Rosewood
 805 D3 with luxurious Santos Rosewood veneer. Limited edition with numbered plate.



800 Series Diamond



Gloss Black, Rosenut, Satin White



800 D3

Retail Price	\$14,999.99 EACH
Finish	Gloss Black Rosenut Satin White
Description	3-way floorstanding optimized matrix vented-box system. 1 x 1" diamond dome tweeter, 1 x 6" Continuum cone FST™ midrange, 2 x 10" Aerofoil cone bass units. Power handling 1000W.
Dimensions (HWD)	47.9" x 16.3" x 24.1"



802 D3

Retail Price	\$10,999.99 EACH
Finish	Gloss Black Rosenut Satin White
Description	3-way floorstanding optimized matrix vented-box system. 1 x 1" diamond dome tweeter, 1 x 6" Continuum cone FST™ midrange, 2 x 8" Aerofoil cone bass units. Power handling 500W.
Dimensions (HWD)	47.7" x 15.4" x 23"



803 D3

Retail Price	\$8,499.99 EACH
Finish	Gloss Black Rosenut Satin White
Description	3-way floorstanding optimized matrix vented-box system. 1 x 1" diamond tweeter, 1 x 5" Continuum cone FST™ midrange, 2 x 7" Aerofoil cone bass units. Power handling 500W.
Dimensions (HWD)	45.7" x 13.1" x 19.6"

Note: Available in *Prestige Edition*.



804 D3

Retail Price	\$4,999.99 EACH
Finish	Gloss Black Rosenut Satin White
Description	3-way floorstanding optimized matrix vented-box system. 1 x 1" diamond tweeter, 1 x 5" Continuum cone FST™ midrange, 2 x 6.5" Aerofoil cone bass units. Power handling 200W.
Dimensions (HWD)	40.1" x 9.4" x 13.6"



805 D3

Retail Price	\$2,999.99 EACH
Finish	Gloss Black Rosenut Satin White
Description	2-way bookshelf optimized matrix vented-box system. 1 x 1" diamond tweeter, 1 x 6.5" Continuum cone bass midrange. Power handling 120W.
Dimensions (HWD)	16.7" x 9.4" x 13.6"

Note: Available in *Prestige Edition*.



FS-805 D3 Stand

Retail Price	\$599.99 EACH
Finish	Black Silver
Description	Floor stand for 805 D3.
Dimensions (HWD)	23.4" x 10" x 14.5"



800 Series Diamond



HTM1 D3

Retail Price	\$5,999.99 EACH
Finish	Gloss Black Rosenut Satin White
Description	3-way optimized matrix vented-box system. 1 x 1" diamond tweeter, 1 x 6" Continuum cone FST™ midrange, 2 x 8" Aerofoil cone bass units. Power handling 500W.
Dimensions (HWD)	13" x 33.5" x 13.5"

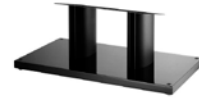
Note: Floorstand not included. See HTM Stand.



HTM2 D3

Retail Price	\$3,999.99 EACH
Finish	Gloss Black Rosenut Satin White
Description	3-way optimized matrix vented-box system. 1 x 1" diamond tweeter, 1 x 5" Continuum cone FST™ midrange, 2 x 6.5" Aerofoil cone bass units. Power handling 200W.
Dimensions (HWD)	11.9" x 28.4" x 12.8"

Note: Floorstand not included. See HTM Stand.



FS-HTM D3 Stand

Retail Price	\$699.99 EACH
Finish	Black Silver
Description	Floor stand for HTM1 D3 or HTM2 D3 center channels.
Dimensions (HWD)	11.1" x 27.1" x 14.6"

DB Series Subwoofers



Gloss Black, Rosenut, Satin White



DB1D

Retail Price	\$4,999.99 EACH
Finish	Gloss Black Rosenut Satin White
Description	Active balanced-drive closed-box subwoofer system. 2000W Class D Hypex amplifier, 2 x 12" Aerofoil cone drive units in a balanced configuration, Digital preamplifier with Dynamic EQ, App-based set-up and BT-LE control.
Dimensions (HWD)	18.1" x 16.9" x 16.1"



DB2D

Retail Price	\$3,999.99 EACH
Finish	Gloss Black Rosenut Satin White
Description	Active balanced-drive closed-box subwoofer system. 1000W Class D Hypex amplifier, 2 x 10" Aerofoil cone drive units in a balanced configuration, Digital preamplifier with Dynamic EQ, App-based set-up and BT-LE control.
Dimensions (HWD)	16.9" x 14.8" x 14.2"



DB3D

Retail Price	\$2,999.99 EACH
Finish	Gloss Black Rosenut Satin White
Description	Active balanced-drive closed-box subwoofer system. 1000W Class D Hypex amplifier, 2 x 8" Aerofoil cone drive units in a balanced configuration, Digital preamplifier with Dynamic EQ, App-based set-up and BT-LE control.
Dimensions (HWD)	14.1" x 12.6" x 11.8"



DB4S

Retail Price	\$1,899.99 EACH
Finish	Gloss Black Rosenut Satin White
Description	Active closed-box subwoofer system. 1000W Class D Hypex amplifier, 1 x 10" Aerofoil cone drive units, Digital preamplifier with Dynamic EQ, App-based set-up and BT-LE control.
Dimensions (HWD)	14.8" x 14.1" x 14.5"



700 Series



Gloss Black, Rosenut, Satin White



702 S2

Retail Price \$2,499.99 EACH

Finish Gloss Black
Rosenut
Satin White

Description 3-way system, 1" Decoupled Carbon Dome™ solid body tweeter on top, 6" Continuum™ cone FST™ midrange, decoupled, 3 x 6.5" Aerofoil Profile bass units. Power handling 300W.

Dimensions (HWD) 42.8" x 7.9" x 14.3"

Includes tweeter, grille and terminals, plinth in the height only



703 S2

Retail Price \$1,999.99 EACH

Finish Gloss Black
Rosenut
Satin White

Description 3-way system, 1" Decoupled Carbon Dome tweeter, 6" Continuum cone FST midrange, decoupled, 2 x 6.5" Aerofoil Profile bass units. Power handling 200W.

Dimensions (HWD) 39" x 7.9" x 12.6"

Includes grille and terminals but not plinth



704 S2

Retail Price \$1,499.99 EACH

Finish Gloss Black
Rosenut
Satin White

Description 3-way system, 1" Decoupled Carbon Dome tweeter, 5" Continuum cone FST midrange, decoupled, 2 x 5" Aerofoil Profile bass units. Power handling 150W.

Dimensions (HWD) 36.4" x 6.5" x 10.9"

Includes grille and terminals but not plinth



705 S2

Retail Price \$1,499.99 EACH

Finish Gloss Black
Rosenut
Satin White

Description 2-way system, 1" Decoupled Carbon Dome solid-body tweeter on top, 6.5" Continuum bass / midrange. Power handling 120W.

Dimensions (HWD) 16" x 7.8" x 12.2"

Includes grille and terminals



706 S2

Retail Price \$999.99 EACH

Finish Gloss Black
Rosenut
Satin White

Description 2-way system, 1" Decoupled Carbon Dome tweeter, 6.5" Continuum bass / midrange. Power handling 120W.

Dimensions (HWD) 13.4" x 7.8" x 11.9"

Includes grille and terminals



707 S2

Retail Price \$749.99 EACH

Finish Gloss Black
Rosenut
Satin White

Description 2-way system, 1" Decoupled Carbon Dome tweeter, 5" Continuum bass / midrange. Power handling 100W.

Dimensions (HWD) 11" x 6.5" x 10.9"

Includes grille and terminals



HTM71 S2

Retail Price	\$1,499.99 EACH
Finish	Gloss Black Rosenuit Satin White
Description	3-way system, 1" Decoupled Carbon Dome tweeter, 4" Continuum FST midrange, decoupled, 2 x 6.5" Aerofoil Profile bass drive units. Power handling 200W.
Dimensions (HWD)	8.6" x 23.2" x 11.9" Includes grille and terminals



HTM72 S2

Retail Price	\$999.99 EACH
Finish	Gloss Black Rosenuit Satin White
Description	2-way system, 1" Decoupled Carbon Dome tweeter, 2 x 5" Continuum bass/midrange. Power handling 120W.
Dimensions (HWD)	6.6" x 18.9" x 10.8" Includes grille and terminals

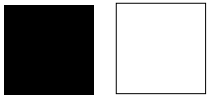


FS-700 S2

Retail Price	\$299.99 EACH
Finish	Black Silver
Description	Speaker stand for 700 Series bookshelf models. Integrated cable management. Sand-fill mass loading option. Updated design from original FS-CM S2.
Dimensions (HWD)	24.2" x 11.4" x 11.7"



600 Series



Matte Black and Matte White



603

606

607

STAV24

Retail Price	\$999.99 EACH	\$449.99 EACH	\$349.99 EACH	\$99.99 EACH
Finish	Matte Black Matte White	Matte Black Matte White	Matte Black Matte White	Black
Description	3-way vented box system, 1" Decoupled Double Dome aluminum tweeter, 6" Continuum cone FST™ midrange, 2 x 6.5" Paper / Aramid fiber bass cones, Power handling 200W.	2-way vented box system, 1" Decoupled Double Dome aluminum tweeter, 6.5" Continuum cone bass / midrange, Power handling 120W.	2-way vented box system, 1" Decoupled Double Dome aluminum tweeter, 5" Continuum cone bass / midrange, Power handling 100W.	Universal 24" metal black spiked stand for use with 606 and 607.
Dimensions (HWD)	38.8" x 7.5" x 13.4" Not including plinth/feet	13.5" x 7.5" x 12.8" Including grille and terminals	11.8" x 6.5" x 9.1" Including grille and terminals	24" x 9.5" x 11.75"



HTM6

ASW610XP

ASW610

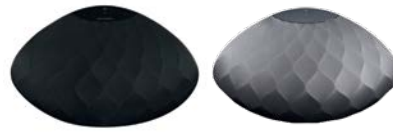
ASW608

Retail Price	\$749.99 EACH	\$1,499.99 EACH	\$799.99 EACH	\$499.99 EACH
Finish	Matte Black Matte White	Matte Black Matte White	Matte Black Matte White	Matte Black Matte White
Description	2-way vented box system, 1" Decoupled Double Dome aluminium tweeter, 5" Continuum cone bass / midrange, Power handling 120W.	Active closed-box subwoofer, 1 x 10" Paper/Aramid fiber® cone bass driver, 500 watt Class D amplifier.	Active, closed-box subwoofer, 1 x 10" paper/Aramid fiber® cone bass driver, 200 watt Class D amplifier.	Active, closed-box subwoofer, 1 x 8" paper/Aramid fiber® cone bass driver, 200 watt Class D amplifier.
Dimensions (HWD)	6.3" x 18.9" x 11.0" Including grille and terminals	12.8" x 12.8" x 14.7" Including grille and controls, not including feet	12.2" x 12.2" x 14.8" Including grille and controls, not including feet	10.2" x 10.2" x 13" Including grille and controls, not including feet



FORMATION **DUO**

Retail Price \$1999⁹⁹ each
Finish/Order Code Black | White
Description Wireless high performance stereo speakers. 1" Carbon dome tweeter, 6.5" Continuum cone bass midrange.
Dimensions (HWD) 15.6" x 7.8" x 12"



FORMATION **WEDGE**

Retail Price \$899⁹⁹
Finish Black | Silver
Description Wireless speaker system. 2 x 1" double dome tweeter. 2 x 3.5" FST midrange. 1 x 6" subwoofer.
Dimensions (HWD) 9.1" x 17.3" x 9.5"



FORMATION **FLEX**

Retail Price \$449⁹⁹
Finish Black
Description Compact wireless speaker system. 1" decoupled double dome tweeter. 4" woven glass fibre cone bass/midrange. Use as mono, stereo, whole home, or surrounds.
Dimensions (HWD) 8.5" x 5.1" x 5.1"



FS **DUO FLOOR STAND**

Optional stands for Formation Duo.
Finish Black | Silver
Retail Price \$399.99 each
Dimensions (HWD) 23.4" x 9.5" x 12.4"

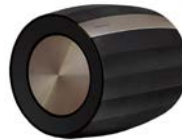
WALL **BRACKET**

Optional wall bracket for Formation Wedge.
Retail Price \$99.99



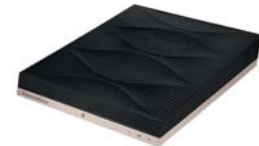
FORMATION **BAR**

Retail Price \$1,199⁹⁹
Finish
Description Wireless soundbar with dedicated center channel and multiroom streaming flexibility. 3 x 1" double dome tweeter, 6 x 2.5" woven glass fiber cone bass / midrange. Optical and network connections. IR learning. Wall bracket included.
Dimensions (HWD) 4.3" x 48.8" x 4.21"



FORMATION **BASS**

Retail Price \$999⁹⁹
Description Wireless Subwoofer with DSP, Dynamic EQ. 2 x 6.5" long throw bass units. Pairs seamlessly with all Formation speakers.
Dimensions (HWD) 10" x 11" x 10.25"



FORMATION **AUDIO**

Retail Price \$699⁹⁹
Description Wireless audio hub. High performance ADC and DAC. Digital audio in (Toslink) Analog audio in (2 x RCA) Digital audio out (1 x RCA) Analog audio out (2 x RCA).
Dimensions (HWD) 1.7" x 8.5" x 10.3"

FORMATION DIFFERENTIATORS

Proprietary Bowers & Wilkins wireless solution, engineered for stability and quality.

Bowers & Wilkins audio excellence.

Simple to use and scales for whole home use.

Stream using your favorite apps and devices with Airplay, Bluetooth, Spotify Connect, Room.





Mini Theater PV1D



M-1

Retail Price	\$249.99 EACH
Finish	Matte Black Matte White
Description	2-way vented monitor. 4" woven glass fiber cone bass / midrange. 1" tweeter. Swivel mounting bracket. Power handling 100W.
Dimensions (HWD)	9.8" x 4.5" x 6.4"

M-1 can swivel on its table stand to a horizontal orientation.
Height w/ horizontal mount: 5.4375"



M-1 Stand

Retail Price	\$149.99 EACH
Finish	Matte Black Matte White
Description	Matte White or Matte Black stand for M-1.
Dimensions (HWD)	37.7" x 9.9" x 9.9"



ASW608

Retail Price	\$499.99 EACH
Finish	Black Ash Matte White
Description	Active, closed-box subwoofer, 1 x 8" paper/Aramid fiber cone bass driver, 200 watt Class D amplifier.
Dimensions (HWD)	10.2" x 10.2" x 13"

Including grille and controls, not including feet



PV1D

Retail Price	\$1,999.99 EACH
Finish	Matte Black Matte White
Description	Active closed-box subwoofer. Pressure Vessel™ enclosure. 2 x 8" bass, 400W amplifier, 5 presets. DSP, RS232, trigger preset switching. Stereo Line In (2x RCA Phono) Speaker Level In (5m cable supplied)
Dimensions (HWD)	13.5" x 10.6" x 14.1"

Mini Theater Systems

MT-60D
M-1 x 5 and PV1D
(sold separately)
MT-60D Retail: \$3,250



MT-50
M-1 x 5 and ASW608
(sold separately)
MT-50 Retail: \$1,750








Headphones



PX7
Retail Price ea. \$399⁹⁹

Color   

Space Grey Silver

Description

- Wireless Over-Ear Headphones with Active Noise Cancellation
- Absolute sound superiority
- Intelligent play/pause and power management
- 30-hours of listening time on a single charge

PX5
Retail Price ea. \$299⁹⁹

Color   

Space Grey Blue

Description

- Wireless On-Ear Headphones with Active Noise Cancellation
- Superior sound quality
- Intelligent play/pause and power management.
- 25-hours of listening time on a single charge

PI3
Retail Price ea. \$199⁹⁹

Color    

Space Grey Gold Blue

Description

- Hybrid Dual Driver In-Ear Wireless Headphone
- All-day neckband style
- Performance materials for an active lifestyle
- 8 hours of listening time on a single charge

P9 Signature
Retail Price ea. \$899⁹⁹

Color  

Brown

Description

- 50th Anniversary headphone
- wired, luxurious over-ear design
- Noise isolation



Custom Theater 800 Series



CT8 LR*

Retail Price \$14,999.99 EACH

Finish Black

Description 3-way closed-box system. 1 x 1.25" metal dome Nautilus tweeter. 1 x 6" Aramid fiber FST midrange, 2 x 10" Rohacell® bass. Power handling 1000W.

Includes CT8 XO MkII; biamplification is required.

Dimensions (HWD) 43.3" x 12.8" x 21.65"



CT8 DS*

Retail Price \$10,999.99 EACH

Finish Black

Description 3-way monopole/2-way dipole selectable closed-box system. 1 x 1.25" metal dome Nautilus tweeter. 6 x 4" mid/high, 1 x 6" Aramid fiber FST midrange, 2 x 10" Rohacell® bass. Power handling 1000W.

Includes CT8 XO MkII; biamplification is required.

Dimensions (HWD) 43.3" x 12.8" x 9.85"



CT8 CC*

Retail Price \$14,999.99 EACH

Finish Black

Description 3-way closed-box system. 1 x 1.25" metal dome tweeter.* 1 x 6" Aramid fiber FST midrange. 2 x 10" Rohacell® bass. Power handling 1000W.

Includes CT8 XO MkII; biamplification is required.

Dimensions (HWD) 12.8" x 43.3" x 21.65"



CT8 XO MKII

Retail Price CT8LR, CT8DS and CT8CC

Finish Aluminum

Description Active bass management controller included with CT8LR, CT8CC, and CT8DS.

Dimensions (HWD) 1.75" x 19" x 14"



CT8 SW

Retail Price \$3,499.99 EACH

Finish Black

Description Closed-box subwoofer. 1 x 15" Rohacell® bass. Power handling 1000W.

Dimensions (HWD) 18.7" x 18.7" x 18.7"

*Note for CT8 LR, CT8 DS, CT8 CC:

- CT8 XO MkII must be used.
- Pairing with CT8 SW is mandatory.
- Biamplification is required (with minimum wattage requirements).



CT8.2 LCRS

Retail Price \$5,999.99 EACH

Finish Black

Description 3-way custom install home theatre LCRS. 8" Paper/Aramid fiber cone bass, 6" woven Aramid fiber FST midrange, 1.25" aluminium dome tweeter. Power handling 500W.

Dimensions (HWD) 39.4" x 12.8" x 11.8"



CT8.4 LCRS

Retail Price \$3,999.99 EACH

Finish Black

Description 3-way custom install home theatre LCRS. Value engineered version of the CT8 LR with passive crossover, 8" Rohacell® bass unit, 6" blue Aramid fiber FST midrange, 1.25" aluminium dome tweeter. Power handling 200W.

Dimensions (HWD) 24.8" x 12.8" x 7.3"



Custom Theater 700 Series



CT7.3 LCRS

Retail Price \$1,799.99 EACH
Finish Black
Description 3-way custom install home theatre LCRS, 2 x 8" fibre cone bass, 6" blue Aramid fiber FST midrange, 1" soft dome tweeter. Power handling 200W.
Dimensions (HWD) 14.2" x 23.9" x 10.5"



CT7.4 LCRS

Retail Price \$1,199.99 EACH
Finish Black
Description 2-way custom install home theatre LCRS, 2 x 6" blue Aramid fiber bass/midrange driver, 1" soft dome tweeter. Power handling 150W.
Dimensions (HWD) 13.5" x 17.5" x 10.5"



CT7.5 LCRS

Retail Price \$699.99 EACH
Finish Black
Description 2-way custom install home theatre LCRS, 7" blue Aramid fiber bass/midrange driver, 1" soft dome tweeter. Power handling 120W.
Dimensions (HWD) 12" x 17.5" x 10.5"



CTSW15

Retail Price \$1,499.99 EACH
Finish Black
Description Passive, closed-box subwoofer with optional rack-mount amplifier. Designed to fit in home theater cabinetry. 1 x 15" paper/Aramid fiber cone bass driver. Power handling 1000W.
Dimensions (HWD) 21.7" x 21.7" x 10.3"



CTSW12

Retail Price \$1,199.99 EACH
Finish Black
Description Passive, closed-box subwoofer with optional rack-mount amplifier. Designed to fit in home theater cabinetry. 1 x 12" paper/Aramid fiber cone bass driver. Power handling 1000W.
Dimensions (HWD) 18.3" x 15.6" x 10.3"



CTSW10

Retail Price \$799.99 EACH
Finish Black
Description Passive, closed-box subwoofer with optional rack-mount amplifier. Designed to fit in home theater cabinetry. 1 x 10" paper/Aramid fiber cone bass driver. Power handling 1000W.
Dimensions (HWD) 14.2" x 13.4" x 10.3"



SA1000

Retail Price \$1,749.99 EACH
Finish Black
Description 1000W Class D subwoofer amplifier for use with CTSW15, CTSW12, CTSW10, 2U rack-mountable.
Dimensions (HWD) 3.9" x 16.9" x 12.7"



CI 800 Series Diamond

For detailed dimensions, DWG files and other details please visit: www.bwgroupsupport.com



Model + Back Box	CWM8.3 D + BBW83	CWM8.5 D + BBW85	CCM8.5 D + BBC85
System Retail	\$5,199.98 (1 SPEAKER w/ 1 Back Box)	\$2,899.98 (1 SPEAKER w/ 1 Back Box)	\$3,499.98 (1 SPEAKER w/ 1 Back Box)

Model	CWM8.3 D	CWM8.5 D	CCM8.5 D
Suggested Retail	\$4,299.99 EACH	\$2,199.99 EACH	\$2,799.99 EACH
Description	3-way in-wall system. 1" Diamond Dome tweeter w/ Nautilus tube, 5" Continuum FST midrange driver, 7" Aerofoil Bass drivers, Aluminium mini baffle can be turned through 90 degrees. Flowport.	2-way in-wall system. 1" Diamond Dome tweeter w/ Nautilus tube, 7" Continuum bass/midrange driver w/ anti-resonance plug. Flowport.	2-way in ceiling system. 1" Diamond Dome tweeter w/ Nautilus tube, 7" Continuum bass/midrange driver w/ anti-resonance plug. Rotatable aluminum mini-baffle allows toe-in. Flowport.
Power Handling	200W	120W	120W
Frame Size	34.6" x 10" (880mm x 254mm)	16.2" x 9.72" (411mm x 247mm)	13.8" x 13.8" (351mm x 351mm)
Cut-Out Size	34" x 9.4" (862mm x 238mm)	15.5" x 9.09" (395mm x 231mm)	13" x 13" (331mm x 331mm)
Depth of Enclosure	3.4" (90mm)	3.4" (90mm)	7" (177mm)

Mandatory Back Box	BBW83	BBW85	BBC85
Suggested Retail	\$899.99 EACH	\$699.99 EACH	\$699.99 EACH

Note: Back boxes are mandatory for CI 800 Series Diamond models



CI 700 Series



CCM7.3 S2



CCM7.5 S2

Suggested Retail ea.	\$1,799.99	\$799.99
Description	3-way in-ceiling system, 1 x 1" Carbon Dome tweeter, 1 x 4" Continuum cone FST midrange, 2 x 5" Aerofoil profile bass.	2-way in-ceiling system, 1 x 1" Carbon Dome tweeter, 1 x 7" Continuum cone bass/midrange
Power Handling	25W – 200W	25W – 150W
Frame Size	H: 14" W: 14"	11.4"
Cut-Out Size	H: 13.1" W: 13.1"	10"
Depth Behind Surface	7.7"	5"
Shipping Weight	1 per carton 25.5 lbs.	1 per carton 9 lbs.

Pre-Mount Kit	PMK 7C	PMK C8*
Cost ea.	\$34.99 Retail	\$24.99 Retail
Back Box	Integrated Back Box	BB 6C
Cost ea.	N/A	\$99.99 Retail

Optional Square Grille: GR68SQ

*Note: PMK is mandatory when BB 6C is used.



CWM7.3 S2



CWM7.4 S2



CWM7.5 S2

Suggested Retail ea.	\$1,799.99	\$999.99	\$799.99
Description	3-way in-wall system. 1 x 1" Carbon Dome tweeter, 1 x 4" Continuum cone FST midrange, 2 x 6" Aerofoil profile bass, Flowport. Optional Air Reservoir included.	2.5-way in-wall system, 1 x 1" Carbon Dome tweeter, 2 x 4" Continuum cone mid/bass, 2 x 4" Aramid Fiber/Paper bass	2-way in-wall system. 1 x 1" Carbon Dome tweeter, 1 x 5" Continuum cone mid/bass, Flowport. Optional Air Reservoir included.
Power Handling	25W – 200W	25 – 150W	25 – 150W
Frame Size	H 29" (736mm) W 11" (276mm)	H 24.6" (625mm) W 6.8" (175mm)	H 14" (356mm) W 8.5" (212mm)
Cut-Out Size	28" (711mm) W 9.9" (251mm)	H 23.5" (597mm) W 5.8" (147mm)	H 13" (331mm) W 7.4" (187mm)
Depth Behind Surface	4" (102mm)	3.64" (93mm)	4" (102mm)
Shipping Weight	1 per carton 31 lbs.	1 per carton 16.5 lbs.	1 per carton 15.9 lbs.
Pre-Mount Kit	PMK 7.3W	PMK CWMC7	
Cost ea.	\$34.99 Retail	\$34.99 Retail	\$34.99 Retail
Back Box	Integrated Back Box	BB LCR7	Integrated Back Box
Cost ea.	N/A	\$199.99 Retail	N/A

Note: Retro-fit back boxes are included with CI 700 Series models.



Square Grilles: Master Cartons (6 pairs)

Square Grille: Singles

	Square Grilles for 66 models	Square Grilles for 68 models	Square Grille for 66 models	Square Grille for 68 models
Description	Master carton of square grilles to fit 66 models. Includes 6 pairs.	Master carton of square grilles to fit 68 models. Includes 6 pairs.	1 single square grille to fit 66 models. Parts order.	1 single square grille to fit 68 models. Parts order.
Retail Price	\$499.99 6 PAIRS	\$499.99 6 PAIRS	\$41.65 EACH	\$41.65 EACH

			
Model	CCM 682	CCM 683	CCM 684
Suggested Retail	\$699.99 EACH	\$499.99 EACH	\$349.99 EACH
Description	2-way in-ceiling system, 1" Nautilus swirl loaded aluminum dome tweeter, 8" Blue Aramid fiber cone bass/midrange. <i>Features a larger magnet and voice coil than CCM683.</i>	2-way in-ceiling system, 1" Nautilus Swirl loaded aluminum dome tweeter, 8" Blue Aramid fiber cone bass/midrange	2-way in-ceiling system, 1" soft dome tweeter, 8" Black Glassfibre cone bass/midrange
Power Handling	25 - 150W	25 -130W	25 -130W
Frame Diameter	11.4" (290mm)	11.4" (290mm)	11.4" (290mm)
Cut-Out Diameter	9.9" (251mm)	9.9" (251mm)	9.9" (251mm)
Depth Behind Surface (.5" minimum wall)	4.8" 122mm	4.8" 122mm	4.8" 122mm
Pre-Mount Kit	PMK C8*	PMK C8*	PMK C8*
Suggested Retail	\$24.99 EACH	\$24.99 EACH	\$24.99 EACH
Backbox	BB 6C	BB 6C	BB 6C
Suggested Retail	\$99.99 EACH	\$99.99 EACH	\$99.99 EACH

				
Model	CCM 662	CCM 663	CCM 663RD	CCM 664
Suggested Retail	\$599.99 EACH	\$399.99 EACH	\$449.99 EACH	\$299.99 EACH
Description	2-way in-ceiling system, 1" Nautilus swirl loaded aluminum dome tweeter, 6" Blue Aramid fiber cone bass/midrange. <i>Features a larger magnet and voice coil than CCM663.</i>	2-way in-ceiling system, 1" Nautilus swirl loaded aluminum dome tweeter, 6" Blue Aramid fiber cone bass/midrange	Reduced depth version of CCM 663.	2-way in-ceiling system, 1" soft dome tweeter, 6" Black Glassfiber cone bass/midrange
Power Handling	25 - 150W	25 -130W	25W - 100W	25 -130W
Frame Diameter	9.5" (240mm)	9.5" (240mm)	9.5" (240mm)	9.5" (240mm)
Cut-Out Diameter	8" (202mm)	8" (202mm)	8" (202mm)	8" (202mm)
Depth Behind Surface (.5" minimum wall)	4.8" 122mm	4.8" 122mm	3.62" (92mm)	4.8" 122mm
Pre-Mount Kit	PMK C6*	PMK C6*	PMK C6*	PMK C6*
Suggested Retail	\$24.99 EACH	\$24.99 EACH	\$24.99 EACH	\$24.99 EACH
Backbox	BB 6C	BB 6C	BB 6C or shallower BB 6W	BB 6C
Suggested Retail	\$99.99 EACH	\$99.99 EACH	\$99.99 EACH	\$99.99 EACH

*Note: PMKs are mandatory when BB 6C or BB 6W are used.

CI 600 Series



Model	CCM 665	CCM 663SR	CCM 664SR	CCM 632
Suggested Retail	\$229.99 EACH	\$599.99 EACH	\$399.99 EACH	\$299.99 EACH
Description	2-way in-ceiling system, 1" soft dome tweeter, 6" Black Glassfiber cone bass/midrange	2-way dual channel in-ceiling system, 1" soft dome tweeter, 6" Blue Aramid fiber cone bass/midrange	2-way dual channel in ceiling system, 1" soft dome tweeter, 6" Black Glassfiber cone bass/midrange	Single driver in-ceiling system, 3" paper cone full-range
Power Handling	25 -130W	25 – 80W (per channel)	25 – 80W (per channel)	10 – 60W (per channel)
Frame Diameter	9.5" (240mm)	9.5" (240mm)	9.5" (240mm)	5.7" (146.5mm)
Cut-Out Diameter	8" (202mm)	8" (202mm)	8" (202mm)	4.5" (114.3mm)
Depth Behind Surface (.5" minimum wall)	4.8" (122mm)	4.8" (122mm)	4.8" (122mm)	3.4" (86.3mm)
Pre-Mount Kit	PMK C6*	PMK C6*	PMK C6*	PMK C3
Suggested Retail	\$24.99 EACH	\$24.99 EACH	\$24.99 EACH	\$24.99 EACH
Backbox	BB 6C	BB 6C	BB 6C	Integrated Backbox
Suggested Retail	\$99.99 EACH	\$99.99 EACH	\$99.99 EACH	CCM 632 fits in the BB6C for "fire-rated applications"

Square and round grilles included






Model	CWM 663	CWM 664	CWM 652
Suggested Retail	\$399.99 EACH	\$299.99 EACH	\$299.99 EACH
Description	2-way in-wall system, 1" Nautilus tube loaded aluminum dome tweeter, 6" Blue Aramid fiber cone bass/midrange	2-way in-wall system, 1" soft dome tweeter, 6" Black Glassfibre cone bass/midrange	2-way in-wall system, 1" Nautilus Tube loaded aluminum dome tweeter, 5" Blue Aramid fiber cone bass/midrange
Power Handling	25 – 150W	25 – 130W	25 – 100W
Frame Height	12.4" (315mm)	12.4" (315mm)	10.9" (264mm)
Frame Width	8.7" (221mm)	8.7" (221mm)	7.5" (191mm)
Cut-Out Height	10.9" (279mm)	10.9" (279mm)	8.9" (228mm)
Cut-Out Width	7.2" (183mm)	7.2" (183mm)	6.0" (153mm)
Depth Behind Surface (.5" minimum wall)	3.3" (84mm)	3.3" (84mm)	3.3" (84mm)
Pre-Mount Kit	PMK W6*	PMK W6*	PMK W5*
Suggested Retail	\$24.99 EACH	\$24.99 EACH	\$24.99 EACH
Backbox	BB 6W	BB 6W	BB 6W
Suggested Retail	\$99.99 EACH	\$99.99 EACH	\$99.99 EACH

**Note: PMKs are mandatory when BB 6C or BB 6W are used.*

CI 300 Series



						
Model	CCM 382		CCM 362		CWM 362	
Suggested Retail	\$224.99 EACH		\$174.99 EACH		\$224.99 EACH	
Description	2-way in-ceiling system 1" soft dome tweeter 8" polypropylene cone bass/midrange		2-way in-ceiling system 1" soft dome tweeter 6" polypropylene cone bass/midrange		2-way in-wall system 1" soft dome tweeter 6" polypropylene cone bass/midrange	
Power Handling	80W		80W		80W	
Frame Diameter	11.4" (290mm)		9.5" (240mm)		Height: 12.4" (315mm) Width: 8.7" (221mm)	
Cut-Out Diameter	9.8" (249mm)		7.9" (200mm)		Height: 10.9" (275mm) Width: 7.2" (181mm)	
Depth Behind Surface (.5" minimum wall)	3" (77mm)		2.7" (69mm)		2.5" (64mm)	
Pre-Mount Kit	PMK C8		PMK C6		PMK W6	
Suggested Retail	\$24.99 EACH		\$24.99 EACH		\$24.99 EACH	
Backbox	BB 6C		BB 6C		BB 6W	
Suggested Retail	\$99.99 EACH		\$99.99 EACH		\$99.99 EACH	

						
Model	ISW 3		ISW 4		SA250 Mk2	
Suggested Retail	\$1,199.99 EACH		\$899.99 EACH		\$1,199.99 EACH	
Description	In-floor/wall/ceiling/millwork subwoofer 2 x 6.5" paper/Aramid fiber cone bass drivers		In wall subwoofer system requires external rack-mount amplifier, 2 x 8" paper/Aramid fiber cone bass drivers		250W Class D amplifier for use with ISW3 and ISW4. 2U rack-mountable. Black Finish.	
Dimensions	Width: 13" (330mm) Length: 18.5" (470mm) Depth: 9.25" (235mm)		Height: 20.6" (524mm) Width: 11.6" (294mm) Depth Behind Surface (.5" wall): 3.4" (86mm)		Height: 3.9" (100mm) Width: 16.9" (430mm) Depth: 12.7" (322mm)	
Cut-Out Size	N/A		H 19.1" (485mm) x W 10" (255mm)		N/A	
Electronics	SA250 MK2 (mandatory)		SA250 MK2 (mandatory)		Mandatory for ISW3 and ISW4	
Back Box	N/A		ISW4BB		N/A	
Suggested Retail	-		\$249.99		-	

Note: ISW4BB is mandatory with ISW4

Note: SA250 Mk2 offers separate EQ positions for ISW-3 and ISW-4; has the ability to drive two ISW-3 or ISW-4; and mono summing input.



Indoor/Outdoor Models



AM-1

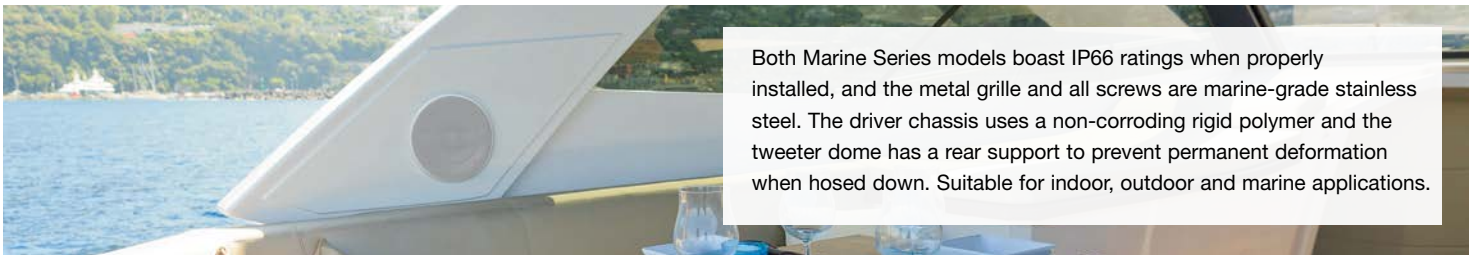
Retail Price	\$349.99 EACH
Finish	Black White
Description	2-way weatherproof indoor/outdoor system with Auxillary Bass Radiator. 1 x 1" aluminum dome tweeter. 1 x 5" glassfibre cone bass/midrange. Power handling 100W.
Dimensions (HWD)	12.25" x 7" x 8.25" (includes wall bracket)



AM-1 Architectural Monitor

AM-1 has been carefully designed to be easy to install, and its elegant cast aluminium wall bracket incorporates an ingenious one-plug mounting system. Combine this with minimal wall projection and a design that allows the speaker to be angled through 220 degrees, and you have a discreet, versatile monitor that can provide you with pristine sound almost anywhere.

Marine Series



Both Marine Series models boast IP66 ratings when properly installed, and the metal grille and all screws are marine-grade stainless steel. The driver chassis uses a non-corroding rigid polymer and the tweeter dome has a rear support to prevent permanent deformation when hosed down. Suitable for indoor, outdoor and marine applications.



Model	Marine 6
Suggested Retail	\$349.99 EACH
Description	Marine speaker, 2-way system, 1" soft dome tweeter, 6" polypropylene cone bass/midrange
Power Handling	20W – 80W
Frame Size	9.6" (243mm)
Cut-Out Size	8" (202mm)
Depth Behind Surface (.5" minimum wall)	3.5" (88mm)
Pre-Mount Kit	PMK C6*
Suggested Retail	\$24.99 EACH

Model	Marine 8
Suggested Retail	\$499.99 EACH
Description	Marine speaker, 2-way system, 1" soft dome tweeter, 8" polypropylene cone bass/midrange
Power Handling	20W – 80W
Frame Size	11.5" (292mm)
Cut-Out Size	10" (253mm)
Depth Behind Surface	3.7" (93mm)
Pre-Mount Kit	PMK C8*
Suggested Retail	\$24.99 EACH



Contact Information

Links

bowerswilkins.com

bwgroupusa.com

bwgroupsupport.com



facebook.com/BowersWilkins



[@bowerswilkins](https://twitter.com/bowerswilkins)



youtube.com/bowerswilkins



[bowerswilkins](https://www.instagram.com/bowerswilkins)

Bowers & Wilkins

B&W Group North America
54 Concord Street
North Reading, MA 01864-2699

Phone: (800) 370-3740
Service/Parts Fax: 800 681-0673
General Fax: (978) 664-4109

retail-us@bowerswilkins.com
www.bowerswilkins.com
www.bwgroupsupport.com
www.bwgroupusa.com