

# PRIMERGY TX1330 M1

## *System configurator and order-information guide*

June 2016

### Contents

Instructions

Configuration diagram

Configurator

Software Configurator 32-bit and 64-bit

I Basic unit

II Processor

III Memory

IV Graphics

V Energy Star restrictions

VI Accessible drives

VII Hard disk drives

VIII SAS / SCSI Controller

IX Disk array

X Communication/Network

XI System management options

XII Miscellaneous

XIII Country specific power cords

Change report



**PRIMERGY Server**

# Instructions

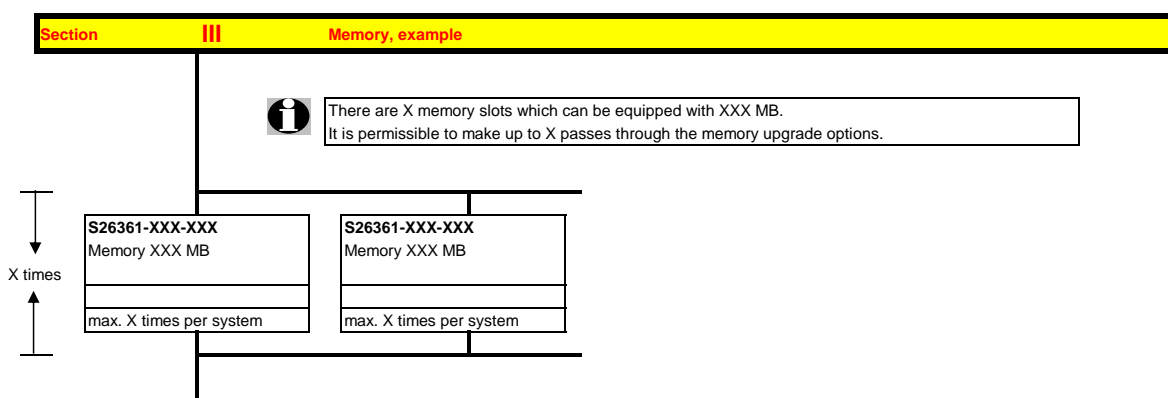
This document contains basic product and configuration information that will enable you to configure your system via PC-/ System-Architect.

Only these tools will ensure a fast and proper configuration of your PRIMERGY server or your complete PRIMERGY Rack system.

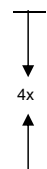
You can configure your individual PRIMERGY server in order to adjust your specific requirements.

The System configurator is divided into several chapters that are identical to the current price list and PC-/ System-Architect

Please follow the lines. If there is a junction, you can choose which way or component you would like to take. Go through the configurator by following the lines from the top to the bottom.



In one chapter you can only select as many components (here 4x) as the arrow indicates.



Please note that there are information symbols which indicate necessary information.



**Further information in the internet see:**

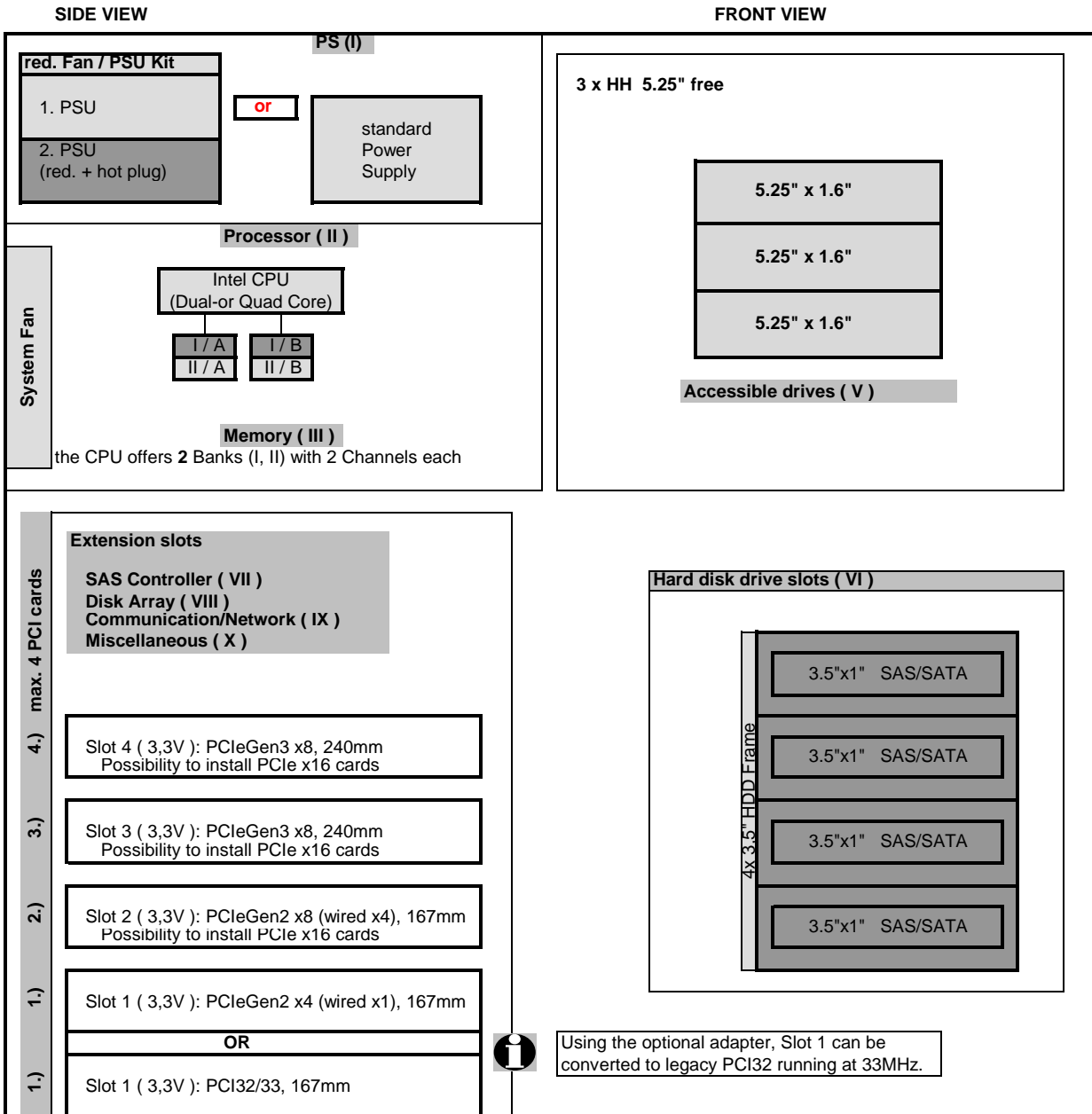
[http://ts.fujitsu.com/products/standard\\_servers/index.html](http://ts.fujitsu.com/products/standard_servers/index.html) (internet)

[https://partners.ts.fujitsu.com/com/order-supply/configurators/primergy\\_config/Pages/default.aspx](https://partners.ts.fujitsu.com/com/order-supply/configurators/primergy_config/Pages/default.aspx) (extranet)

Prices and availability see price list and PC-/ System-Architect  
 Subject to change and errors excepted

## Configuration diagram PRIMERGY TX1330 M1 LFF (3.5") System Unit

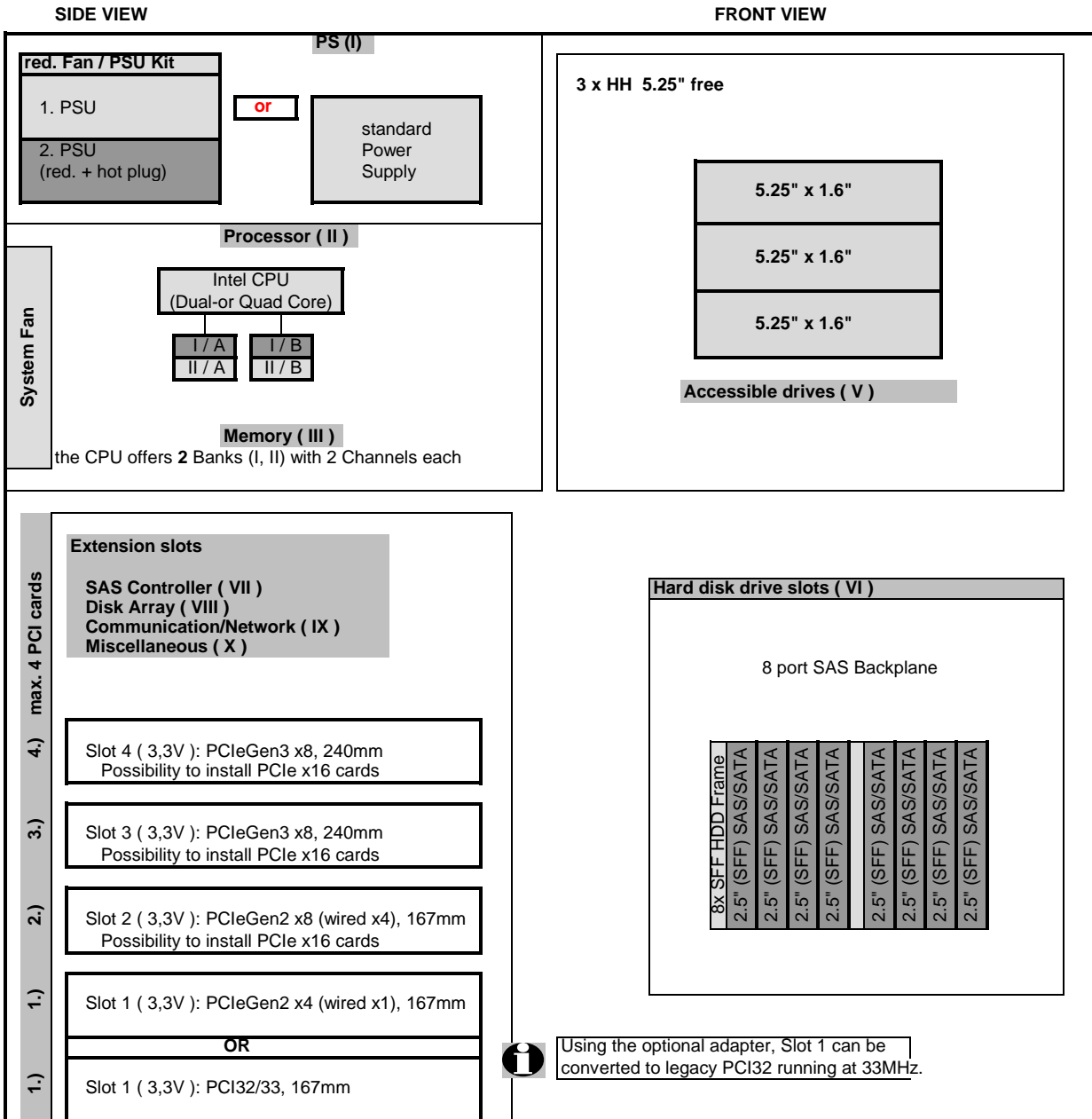
### System unit ( I )



- Included in basic unit
- Option

## Configuration diagram PRIMERGY TX1330 M1 SFF (2.5") System Unit

### System unit ( I )



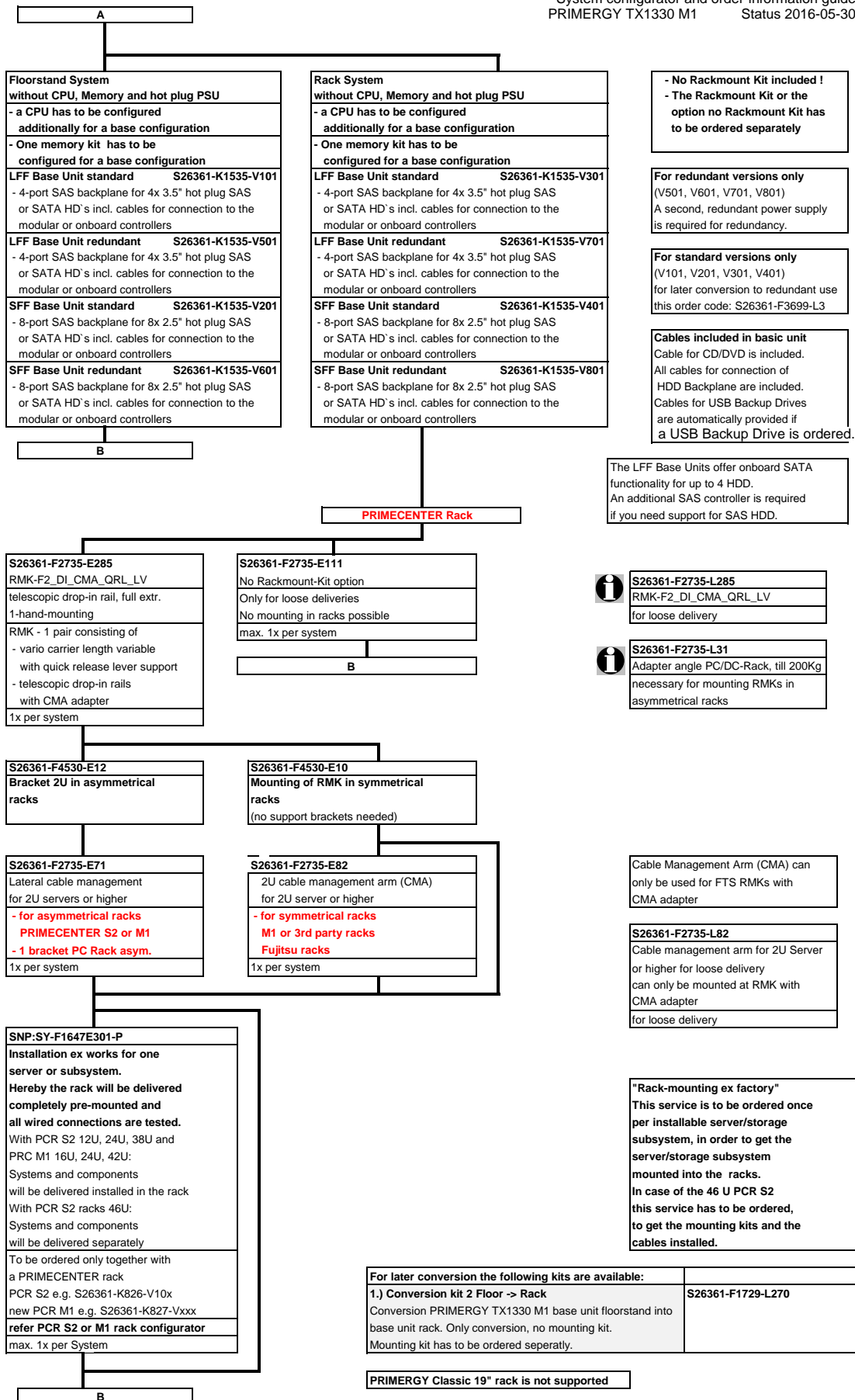
Included in basic unit  
 Option

## Section | Basic unit

**System unit, Rack and Floorstand, including:**

- \* **Two lockable front covers in floorstand version**
    - Door #1 for accessible drive bays
    - Door #2 for hot plug HDD bays
    - Both doors may be locked or door #1 may be left open while door #2 is still locked
  - \* **backplane with 4 (LFF) or 8 (SFF) bays for hot-plug HD's. Type depending on base unit:**
    - Type 1: 4x hot plug LFF (3.5") SAS/SATA HDD (SAS/SATA LFF base units only)
    - Type 2: 8x (2x4) hot plug SFF (2.5") SAS HDD (SAS SFF base units only)
  - \* **standard PSU (hot plug redundant PSU option available)**
  - \* **System fan (No hot-plug, no redundancy)**
  - \* **3 bays 5.25" for accessible drives (half Hight)**
    - Systemboard D3239 with:
    - heat pipe for the CPU
  - \* **Chipset Intel® C224 (codenamed Denlow Lynx Point Standard)**
  - \* **4 PCI slots:**
    - 2 x PCIe x8 Gen3
    - 1 x PCIe x4 (x8 connected) Gen2
    - 1 x PCIe x1 (x4 connected) Gen2 or optional 1 x 32Bit / PCI 33MHz, ( 5V )
  - \* **4 memory slots for max. 32GB with 4x 8GB unbuffered DDR3 RAM**
    - Memory is divided into 4 DIMMs ( 2 channels with 2 slots per channel )
    - First Memory ( one module ) has to be selected for an orderable basic unit
    - Memory upgrade is possible module wise
    - SDDC (Chipkill) is not supported
  - \* **SATA-Controller on board (supporting RAID 0/1/10)**
  - \* **2x1 Gbit Ethernet LAN on board ( Intel Springville and Intel Clarkville ) with ToE;**  
and iSCSI boot integrated in System BIOS as selectable option
  - \* **iRMC S4 (integrated Remote Management Controller) on-board server management controller**  
with dedicated 10/100/1000 Management LAN-port and  
integrated graphics controller ( max. Resolution: 1600 x 1200 at 16 bpp)
- Interfaces:**
- \* 1x RS-232-C (9-pin) (usable for BMC or OS or shared)
  - \* 1x VGA (15 pin)
  - \* 6x USB 2.0 ( UHCI ) with 480MBit/s (4x external at the rear, 1x external at the front, 1x internal for UFM, no USB wakeup)
  - \* 4x USB 3.0 ( UHCI ) with 5 GBit/s (2x external at the rear, 1x external at the frontside, 1x internal for backup device)
  - \* 2x LAN RJ45, 1x Service-LAN RJ45 switchable
- \*Internal Cables:**
1. SATA cable for BD/DVD.
  2. Cable for HDD Backplane
- \* **ServerView Suite Software Paket inkl. ServerView Installation Manager and Server Management Software**
- \* **Documentation engl. (multilingual on CD)**

A



- No Rackmount Kit included !  
 - The Rackmount Kit or the option no Rackmount Kit has to be ordered separately

For redundant versions only (V501, V601, V701, V801)  
 A second, redundant power supply is required for redundancy.

For standard versions only (V101, V201, V301, V401)  
 for later conversion to redundant use this order code: S26361-F3699-L3

Cables included in basic unit  
 Cable for CD/DVD is included.  
 All cables for connection of HDD Backplane are included.  
 Cables for USB Backup Drives are automatically provided if a USB Backup Drive is ordered.

The LFF Base Units offer onboard SATA functionality for up to 4 HDD.  
 An additional SAS controller is required if you need support for SAS HDD.

**S26361-F2735-L285**  
 RMK-F2\_DI\_CMA\_QRL\_LV  
 for loose delivery

**S26361-F2735-L31**  
 Adapter angle PC/DC-Rack, till 200Kg  
 necessary for mounting RMKs in asymmetrical racks

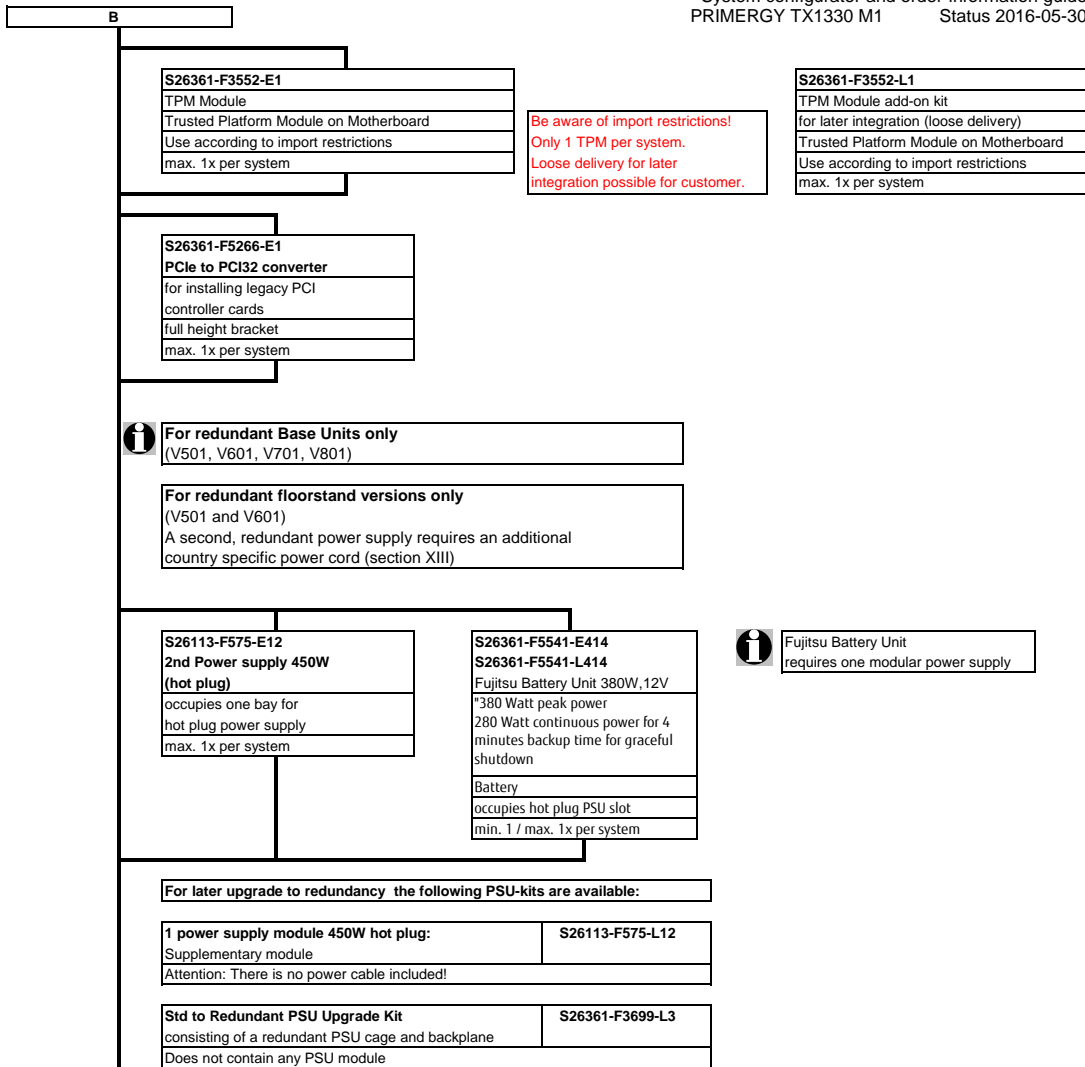
Cable Management Arm (CMA) can only be used for FTS RMKs with CMA adapter

**S26361-F2735-L82**  
 Cable management arm for 2U Server or higher for loose delivery can only be mounted at RMK with CMA adapter for loose delivery

"Rack-mounting ex factory"  
 This service is to be ordered once per installable server/storage subsystem, in order to get the server/storage subsystem mounted into the racks.  
 In case of the 46 U PCR S2 this service has to be ordered, to get the mounting kits and the cables installed.

For later conversion the following kits are available:	
1.) Conversion kit 2 Floor -> Rack Conversion PRIMERGY TX1330 M1 base unit floorstand into base unit rack. Only conversion, no mounting kit. Mounting kit has to be ordered separately.	<b>S26361-F1729-L270</b>

PRIMECENTER Classic 19" rack is not supported



**Section II Processor**

One of following CPU's has to be selected for an orderable basic unit

<b>Dual-Core CPU's</b>	
- 1x 64-bit Intel Pentium (3MB SLC) or Core-i3 (3MB TLC) occupies socket for one CPU	
<b>Pentium</b>	
Pentium G3420 3.2GHz 2C/2T 3MB 1600MHz (54W)	<b>S26361-F3581-E232</b>
<b>Core i3</b>	
Core i3-4330 3.5GHz 2C/4T 4MB 1600MHz (54W)	<b>S26361-F3581-E243</b>
<b>Quad-Core XEON CPU's</b>	
- 1x 64-bit Intel Xeon UP (8MB shared TLC = Third Level Cache) Hyper-Threading; 1600 MHz DDR3 Bus and heat pipe occupies socket for one CPU	
Xeon E3-1220v3 3.1GHz 4C/4T 8MB 1600MHz Turbo (80W)	<b>S26361-F3581-E322</b>
Xeon E3-1231v3 3.3GHz 4C/8T 8MB 1600MHz Turbo (80W)	<b>S26361-F3581-E423</b>
Xeon E3-1241v3 3.4GHz 4C/8T 8MB 1600MHz Turbo (80W)	<b>S26361-F3581-E424</b> on special release
Xeon E3-1271v3 3.5GHz 4C/8T 8MB 1600MHz Turbo (80W)	<b>S26361-F3581-E427</b>
Xeon E3-1281v3 3.6GHz 4C/8T 8MB 1600MHz Turbo (82W)	<b>S26361-F3581-E428</b> on special release
<b>Xeon E3-12xxL Power Optimized</b>	
- 1x 64-bit Intel Xeon LV UP (8MB shared TLC = Third Level Cache) Hyper-Threading (HT); 1600 MHz DDR3 Bus and heat pipe occupies socket for one CPU	
Xeon E3-1275Lv3 2.7GHz 4C/8T 8MB 1600MHz Turbo (45W)	<b>S26361-F3581-E417</b>

**Section III Memory**

**There are 4 memory slots to be used for max. 4 unbuffered DIMMS.**  
 => max. 32GB unbuffered DDR3 RAM for UDIMMs with 8GB modules

**Minimum one memory module or order code = first memory**  
 Unbuffered (ub) UDIMMs

↓	- One <b>DDR3- ub</b> ECC memory module, 1.35V
4x	4GB (1x4GB) 2Rx8 L DDR3-1600 U ECC <b>S26361-F5312-E514</b>
↑	8GB (1x8GB) 2Rx8 L DDR3-1600 U ECC <b>S26361-F5312-E518</b>
	<b>Choose up to 4 order codes above.</b>

**C**

C

**Section IV Graphics**

Graphics controller integrated in iRMCS3 (Integrated Remote Management Controller)  
 ( max. Resolution: 1600 x 1200 at 16bpp )



For deliveries to China with CCC label no graphic card is allowed within the configuration.  
 It can be ordered as loose delivery only!

<b>S26361-F2748-E538</b>
PGRA CP NVS 1GB VGA PCIe x16
NVIDIA NVS315
1024 MB PCIe-x16
Connectors: 1x LFH 59
cable kit for 2x DVI or 2x VGA
cable kits included
Dual head + professional 2-D + 3-D supported for Windows OS
native driver support for Linux OS
full height bracket
max. 1x per system

The high end optional NVIDIA NVS315 graphic card offers dual head operation and fully 3D video support.  
 The cables for either two times DVI-I or VGA connections are part of the delivery.  
**Remote Video direction via iRMC must be disabled.**  
 This PCIe-x16 card can also be installed in slit PCIe-x4, x8 or standard x16 slot.  
 Only one card per server is allowed.

**PY VGA card must be installed in slot 3**



<b>S26361-F2748-L538</b>
PGRA CP NVS 1GB VGA PCIe x16
for loose delivery

D



D

**Section VI Accessible drives**

There are 3 bays (1.6" x 5.25") for accessible drives.

**S26361-F3266-E2**  
 DVD-ROM HH SATA  
 16x DVD 48x CD  
 1.6 x 5.25", black bezel  
 max. 1x per system

**S26361-F3267-E2**  
 DVD-RW supermulti HH SATA  
 all formats, DUAL/DL, DVD-RAM  
 only W2K, W3K and Linux  
 1.6 x 5.25", black bezel  
 max. 1x per system

**S26361-F3641-E4**  
 Blu-ray Triple Writer slim SATA  
 4x BD-RW, 8x DVD, 24x CD  
 BD DL and all CD/DVD formats  
 0.5" drive with mounting frame  
 1.6 x 5.25", black bezel  
 max. 1x per system

**SSD SATADOM SATA 6Gb/s as boot device, non hot-plug**  
 64GB, Endurance=172 TBW (Seq. write) **S26361-F5533-E64**  
 128GB, Endurance=345 TBW (Seq. write) **S26361-F5533-E128**  
 SATADOM is designed for use as a boot drive with the Endurance Spec. above.  
 Vmware is not supported.  
 max. 1x per system, System On-board SATA Interface=3Gb/s

**i** SATADOM connection  
 If SATADOM is configured  
 than ODD & UFM is not supported

Special release  
 Special release

**internal backup devices**

**S26361-F3554-E118**  
 PSAS CP200i  
 Based on chip LSISAS2008  
 SAS 6Gb/sec  
 int: 8 port  
 PCIe 2.0 x8,  
 max. 1 per system

For an internal SAS Backup drive  
 an additional SAS controller has to be configured  
 Data cartridges must be ordered separately

**S26361-F3561-E4**  
 Tape drive LTO3 HH Ultrium SAS  
 400GB, 60MB/s, SAS 3Gb  
 Connector: mini-SAS  
 incl. SAS cable  
 incl. cleaning cartridge  
 without data cartridge  
 1.6 \* 5.25", black bezel  
 max. 1x per system

**S26361-F3626-E2**  
 Tape drive LTO4 HH SAS IBM V2  
 800GB, 120MB/s, SAS 6Gb  
 Connector: mini-SAS  
 incl. SAS cable  
 incl. cleaning cartridge  
 without data cartridge  
 1.6 \* 5.25"  
 max. 1x per system

**RDX**

**S26361-F3750-E4**  
 RDX Drive USB3.0 5.25" internal  
 100MB/s, USB 3.0  
 Connector: USB 3.0 "B"  
 with USB cable  
 without RDX cartridges  
 1.6 \* 5.25", black bezel  
 max. 1x per system

RDX cartridges must be ordered separately  
 RDX 320GB = S26361-F3857-L320  
 RDX 500GB = S26361-F3857-L500  
 RDX 1TB = S26361-F3857-L600  
 10x RDX320 = S26361-F3857-L329

F

F

**Section VII Hard disks drives**

**SAS HDD requires SAS Controller**  
**Configurations with Eco SATA can only be mixed with BC SATA HDD type**  
**SAS and BC SATA drives with the same size can be mixed, but not used in one logical RAID volume**  
**\*) SSD Read-Intensive Endurance=0.3DWPD over 5y**  
**\*\*\*) SSD Mainstream Endurance=10DWPD over 5y**

**SAS/SATA LFF (3.5") Base Units: SAS HDDs Require SAS Controller! see section VIII Internal Disk Array**

There is a 6 port SATA controller in the Base Unit for connection of up to 4 SATA LFF hard disks  
 For up to 4 3.5" SAS hard Drives, you must configure 1 of 3 different 8port SAS controller

4x

HDD Business Critical (BC) SATA 6Gb/s HD 3.5" with hot plug/hot replace tray	
500GB 7.200rpm,<9,0ms, 64MB Cache	<a href="#">S26361-F3670-E500</a>
1000GB 7.200rpm,<9,0ms, 64MB Cache	<a href="#">S26361-F3670-E100</a>
2000GB 7.200rpm,<9,0ms, 64MB Cache	<a href="#">S26361-F3670-E200</a>
3000GB 7.200rpm,<9,0ms, 64MB Cache	<a href="#">S26361-F3670-E300</a>
4000GB 7.200rpm,<9,0ms, 64MB Cache	<a href="#">S26361-F3670-E400</a>
6000GB 7.200rpm,<9,0ms, 128MB Cache, 512e	<a href="#">S26361-F3903-E600</a>
<b>max. 4x per system</b>	

as soon as available

HDD ECO SATA 6Gb/s 3.5" with hot plug/hot replace	
250GB 7200rpm, AF,<9,0ms, 16MB Cache	<a href="#">S26361-F3700-E250</a>
500GB 7200rpm, AF,<9,0ms, 16MB Cache	<a href="#">S26361-F3700-E500</a>
<b>max. 4x per system</b>	

G

HDD SAS 6Gb/s 3.5" with hot plug/hot replace tray	
300GB 15000rpm,<4,5ms, 16MB Cache	<a href="#">S26361-F4005-E530</a>
450GB 15000rpm,<4,5ms, 16MB Cache	<a href="#">S26361-F4005-E545</a>
600GB 15000rpm,<4,5ms, 16MB Cache	<a href="#">S26361-F4005-E560</a>

HDD SAS 6Gb/s 2.5" within 3.5" hot plug/hot replace tray	
300GB 15000rpm,<3,0ms, 64MB Cache	<a href="#">S26361-F5520-E530</a>
450GB 15000rpm,<3,0ms, 64MB Cache	<a href="#">S26361-F5520-E545</a>
600GB 15000rpm,<3,0ms, 64MB Cache	<a href="#">S26361-F5520-E560</a>
<b>max. 4x per system</b>	

SSD SATA 6Gb/s 2.5" within 3.5" hot plug/hot replace tray (H-P)	
120GB, Enterprise, Read-Intensive*	<a href="#">S26361-F5528-E120</a>
240GB, Enterprise, Read-Intensive*	<a href="#">S26361-F5528-E240</a>
480GB, Enterprise, Read-Intensive*	<a href="#">S26361-F5528-E400</a>
800GB, Enterprise, Read-Intensive*	<a href="#">S26361-F5528-E800</a>
100GB, Enterprise, Mainstream Endurance**	<a href="#">S26361-F5319-E100</a>
200GB, Enterprise, Mainstream Endurance**	<a href="#">S26361-F5319-E200</a>
<b>max. 4x per system</b>	

G

G

**SAS / SATA SFF (2.5") Base Units: SAS or more than 4 SATA HDDs require a SAS Controller! see section VIII**

Up to 4 SATA SFF (2.5") hard disks can be configured without a PCI SAS controller.  
 Up to 8 SAS or SATA SFF (2.5") hard disks can be configured as standard together with a SAS controller.

**S26361-F2826-E140**  
 Trigger to request a PCI SAS Controller for configuring more than 4 SATA HDDs  
 max. 1x per system

For a later configuration of more than 4 SATA HDDs, the trigger is not necessary  
 In this case it is sufficient to implement a SAS controller!  
 It is not allowed to connect the SATA HDDs to different controllers  
 In case of running more than 4 HDDs, all of them have to be connected to the PCI based Controller

SSD SATA 6Gb/s 2.5" with hot plug/hot replace tray	
120GB, Enterprise, Read-Intensive*	<a href="#">S26361-F5524-E120</a>
240GB, Enterprise, Read-Intensive*	<a href="#">S26361-F5524-E240</a>
480GB, Enterprise, Read-Intensive*	<a href="#">S26361-F5524-E480</a>
800GB, Enterprise, Read-Intensive*	<a href="#">S26361-F5524-E800</a>
100GB, Enterprise, Mainstream Endurance**	<a href="#">S26361-F5303-E100</a>
200GB, Enterprise, Mainstream Endurance**	<a href="#">S26361-F5303-E200</a>
<b>max. 8x per system</b>	

Business Critical (BC) SATA 6Gb/s HD 2.5" with hot plug/hot replace tray	
250GB 7.200rpm,<9,5ms, 64MB Cache	<a href="#">S26361-F3708-E250</a>
500GB 7.200rpm,<9,5ms, 64MB Cache	<a href="#">S26361-F3708-E500</a>
1000GB 7.200rpm,<9,5ms, 64MB Cache	<a href="#">S26361-F3708-E1000</a>
<b>max. 8x per system</b>	

SAS 6Gb/s 2.5" with hot plug/hot replace tray	
300GB 10000rpm,<4,5ms, 32MB Cache	<a href="#">S26361-F5247-E130</a>
450GB 10000rpm,<4,5ms, 32MB Cache	<a href="#">S26361-F5247-E145</a>
600GB 10000rpm,<4,5ms, 32MB Cache	<a href="#">S26361-F5247-E160</a>
900GB 10000rpm,<4,5ms, 32MB Cache	<a href="#">S26361-F5247-E190</a>
1200GB 10000rpm,<4,5ms, 64MB Cache	<a href="#">S26361-F5247-E112</a>

146GB 15krpm,<4,5ms, 32MB Cache	<a href="#">S26361-F4482-E514</a>
300GB 15krpm,<4,5ms, 32MB Cache	<a href="#">S26361-F4482-E530</a>
450GB 15krpm, <3.0ms, 64MB Cache	<a href="#">S26361-F4482-E545</a>
600GB 15krpm, <3.0ms, 64MB Cache	<a href="#">S26361-F4482-E560</a>

SAS 12Gb/s 2.5" with hot plug/hot replace tray	
300GB 10000rpm,128MB Cache, 512n	<a href="#">S26361-F5551-E130</a>
600GB 10000rpm, 128MB Cache, 512n	<a href="#">S26361-F5551-E160</a>
900GB 10000rpm, 128MB Cache, 512n	<a href="#">S26361-F5551-E190</a>
1.2TB 10000rpm, 128MB Cache, 512n	<a href="#">S26361-F5551-E112</a>
1.8TB 10000rpm, 128MB Cache, 512e	<a href="#">S26361-F5544-E118</a>
<b>max. 8x per system</b>	

8x

H



**HDD 512e**  
 512e drives are not supported with the current versions of vSphere and VSAN

H

**Section VIII External SAS Disk Array**

**Section IX Internal Disk Array**

**SATA Configuration**

**SATA Base Units contain a 6-port on-board SATA controller supporting RAID Levels 0, 1, 10**

**SAS Configuration**

**i** you can choose between 3 types of 8 port SAS controller for the Base Unit:  
 - LSI 2008 based Modular RAID 0,1 (IME)  
 - LSI 2108 based Modular RAID 5,6  
 - LSI 2208 based Modular RAID 5,6  
 if you want to use SAS harddisks or more than 4 harddisks, then one Controller is required  
 On special request based on customising projects up to 2 SATA 2.5" SSDs can be configured without a controller  
**S26361-F3669-E4 does not support 3.5" ECO SATA HDD (S26361-F3700-E250/E500)**

**Controller for 1 to 4 LFF (3.5") or 1 to 8 SFF (2.5") HDD**

1x

**S26361-F3554-E8**  
 RAID Ctrl SAS 6G 8port internal  
 Based on chip LSI SAS2008  
 LSI MegaRAID  
 no Cache, no BBU  
 RAID 0, 1 & 1E  
 Support for 3Gb/s and 6Gb/s  
 SATA and SAS hard drives  
 PCIe x4  
 Low-profile MD2 form factor  
 max. 1x per system

**S26361-F3554-E512**  
 RAID Ctrl SAS 6G 8port internal  
 Based on chip LSI SAS2108  
 LSI MegaRAID  
 512MB Cache with ECC  
 RAID 0, 1, 10, 5, 50, 6, 60  
 Support for 3Gb/s and 6Gb/s  
 SATA and SAS hard drives  
 PCIe x4  
 Low-profile MD2 form factor  
 max. 1 per system

**S26361-F3669-E4**  
 RAID Ctrl SAS 6G 1GB (D3116C)  
 Based on chip LSI SAS2208  
 LSI MegaRAID  
 1GB Cache with ECC  
 RAID 0, 1, 10, 5, 50, 6, 60  
 optional FBU  
 Support for 3Gb/s and 6Gb/s  
 SATA and SAS hard drives  
 PCIe 3.0 x8  
 Low-profile MD2 form factor  
 max. 1x per system

**S26361-F3669-E670\***  
 RAID Advanced Software Options  
 License Activation Key  
 for CacheCade Pro 2.0 & FastPath  
 for 1 Controller

**S26361-F3669-L670\***  
 RAID Advanced Software Options  
 License Activation Key  
 for CacheCade Pro 2.0 & FastPath  
 for 1 Controller

\*E670/L670 : fastpath is included in controller FW

**S26361-F3669-E100**  
 TFM Module for FBU option  
 (flash and FBU control logic)  
 max. 1x per Controller

RAID Advanced Software Options  
 free of charge test licence  
 available: PRIMERGY-PM

**S26361-F3669-E155**  
 Flash Backup Unit  
 with 55cm cable set  
 max. 1x per Controller

**Upgrade RAID controllers**  
 RAID controller bulk delivery  
 F3554-L8/L512, F3669-L4)

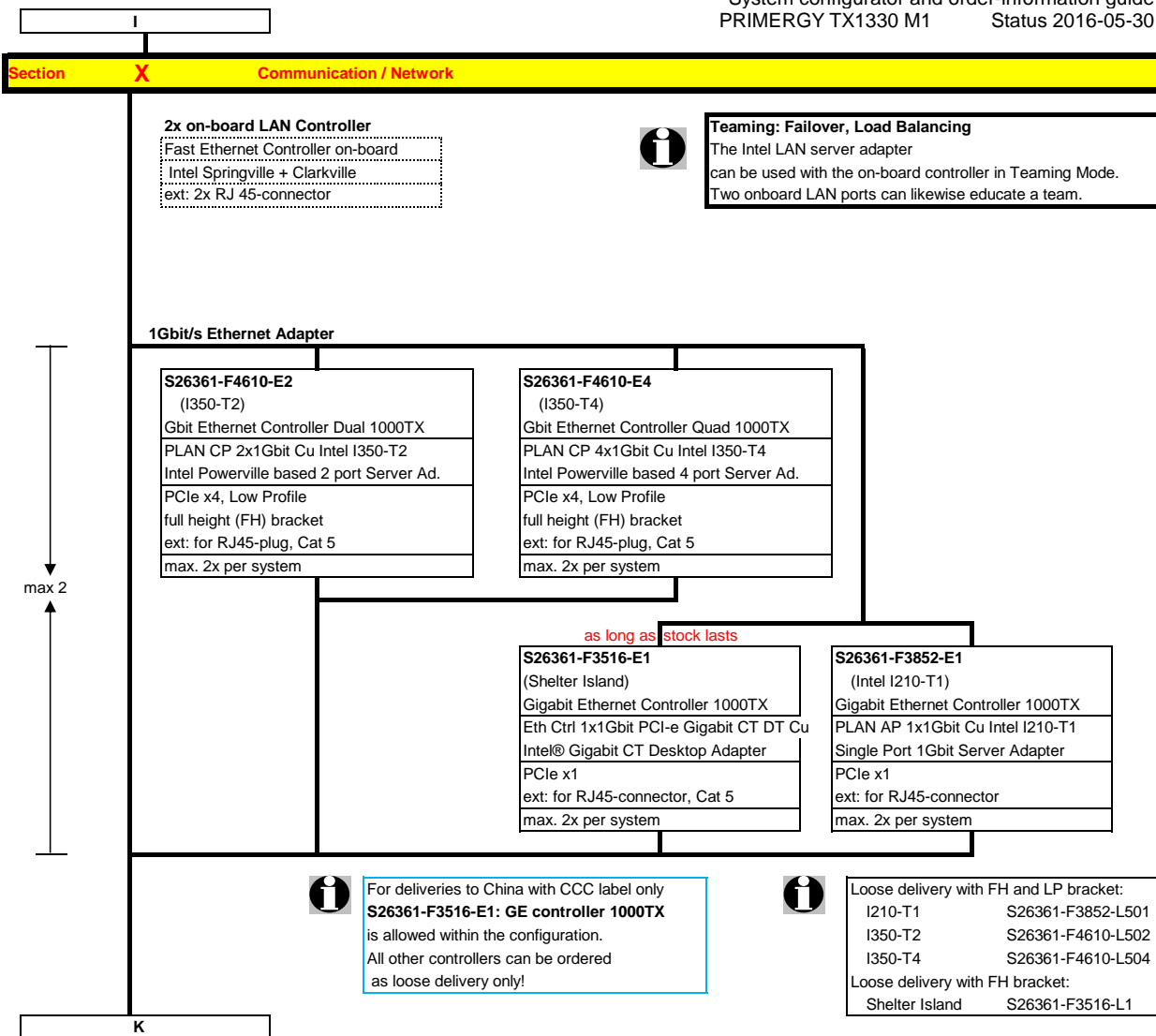
**Upgrade FBU**  
**S26361-F3669-L100**  
 TFM Module for FBU option  
 (flash and FBU control logic)  
 max. 1x per Controller

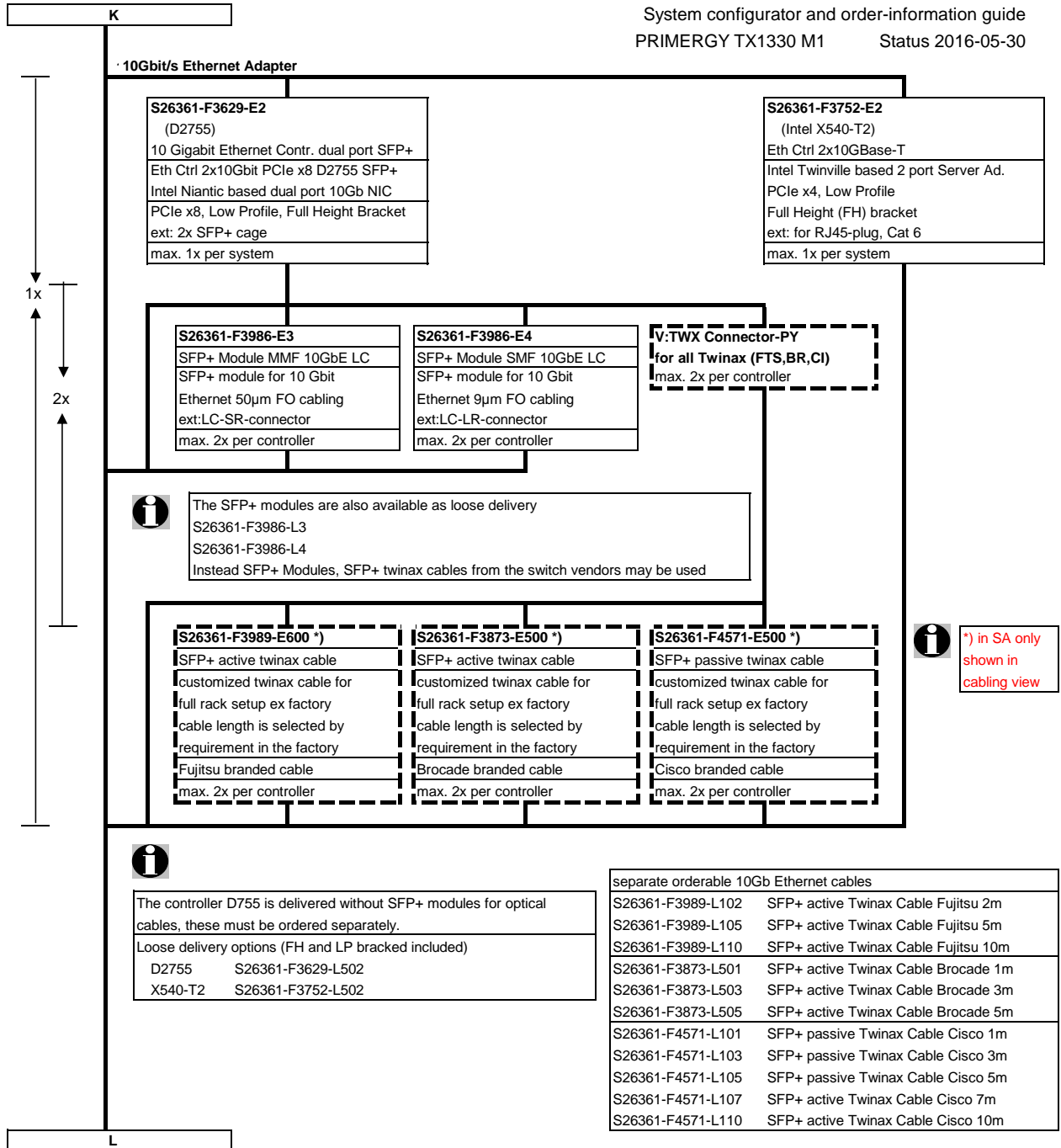
**S26361-F3669-L110**  
 Flash Backup Unit  
 with 25cm, 55cm, 70cm cable set  
 max. 1x per Controller

**SAS controller for internal backup**

**S26361-F3554-E118**  
 PSAS CP200i  
 Based on chip LSI SAS2008  
 SAS 6Gb/sec  
 int: 8 port  
 PCIe 2.0 x8  
 max. x per system

I






L


**Section XI System management options**

**S26361-F1790-E243**  
**iRMC S4 advanced pack**  
integrated remote management controller  
activation key for  
graphical console redirection  
and remote media redirection  
max. 1x per system

 iRMC S4 (integrated Remote Management Controller) onboard Server Management Controller with dedicated 10/100/1000 Service LAN-port and integrated graphics.

**Section XII Miscellaneous**

**S26361-F3301-E242**  
**E-Star Fam2**  
for all base units with red. PSU  
Limits configuration in accordance  
with Energy Star requirements  
max. 1x per system

 **E-Star Fam2 certification is not available with SATADOM SSD**

M

M

**Section XIII Country specific power cords / Region Kits**

**S26361-F3301-E120**  
 CCC certification for China

**i** Since beginning of 2012 the specifications for the approval and production monitoring for China (CCC) have become stricter. This is why the CCC certification label must in future be ordered separately

**S26361-F1452-E100**  
 REGION KIT APAC/EMEA/India  
 For Shipments to Asia pacific, EMEA or India regions  
 1x per system

**S26361-F1452-E110**  
 REGION KIT JP  
 For Shipments to Japan regions  
 1x per system

**S26361-F1452-E130**  
 REGION KIT America  
 For Shipments to America  
 1x per system

**i** A country specific power cord has to be ordered for all floorstand versions:  
 - once per basic unit and an additional second cable  
 - if an second hot plug, redundant power supply modul is ordered.

PRIMERGY TX1330 M1 Floorstand

PRIMERGY TX1330 M1 Rack

max.  
2 x

**Power cord for following countries:**  
 1.8m, black  
 T26139-Y1740-E10 D, A, B, F, NL, FIN, S, N, E, P, RUS, TR  
 T26139-Y1742-E10 USA, Canada  
 T26139-Y1743-E10 Switzerland  
 T26139-Y1744-E10 UK, Ireland  
 T26139-Y1745-E10 Italy  
 T26139-Y1746-E10 Denmark  
 T26139-Y1757-E10 Taiwan  
 2.5m, black  
 T26139-Y1751-E10 China  
 T26139-Y3850-E10 Option "no powercord", for Countries without specific cable orderable

**Power cord options (1x per PSU)**  
 T26139-Y1968-E100 Powercord for rack, 4m, grey, IEC 320 C13 -> C14 connector  
 T26139-Y1742-E10, 1.8 USA, Canada, 1.8m, grey  
 T26139-Y3850-E10 Option "no powercord", for Countries without specific cable orderable

**i** **T26139-Y1742-E10 USA, Canada**  
 For shipments to USA&Canada, you have to order one power cord (1.8m, grey) per power supply.

**Optional power cord, 1.8m, black, for the following countries:**  
 T26139-Y1740-L10 D, A, B, F, NL, FIN, N, S, E, P, RUS, TR  
 T26139-Y1742-L10 USA, Canada  
 T26139-Y1744-L10 UK, IR  
 T26139-Y1745-L10 Italy  
 T26139-Y1746-L10 Denmark  
 T26139-Y1757-L10 Taiwan  
**Optional power cord, 2.5m, black, for the following countries:**  
 T26139-Y1751-L10 China

**i** **Options and other peripherals**  
 For other options, refer to SystemArchitect and Pricelist.  
 These options are supplied lose with the shipment.  
 For suitable peripherals for this product, please refer to SystemArchitect.

Option for Floorstand

**USB keyboards for floorstand versions for following countries:**

USB standard Keyboard KB521		USB professional Keyboard KBPC PX ECO
S26381-K521-E170	Switzerland	S26381-K341-E170
S26381-K521-E104	Czech/Slovak	S26381-K341-E104
S26381-K521-E120	Germany	S26381-K341-E120
S26381-K521-E180	Spain	S26381-K341-E180
S26381-K521-E140	France	S26381-K341-E140
S26381-K521-E165	United Kingdom	S26381-K341-E165
S26381-K521-E185	Italy	S26381-K341-E185
S26381-K521-E154	Sweden / Finland	S26381-K341-E154
S26381-K521-E102	USA / international	S26381-K341-E110

option for floorstand

USB Mouse:		
Mouse M520 Black	S26381-K467-E100	S26381-K467-L100
Mouse M520 Grey	S26381-K467-E101	S26381-K467-L101
Mouse M530 Grey (as soon as available)	n/a	S26381-K468-L101

End PRIMERGY TX1330 M1



## Change Report

Date	Order number	Changes
2016-05-10	S26361-F3669-E660/L660	removed
2016-04-05	T26139-Y1757-E10	added power cord for Taiwan
2016-03-14	T26139-Y1742-E10	changed color to black
2016-03-08	S26361-F3669-E670	added Advanced SW Option CacheCade with FastPath for free
2015-02-01	S26361-F5541-E414	changed description of FJBU
2015-12-10	USB mouse portfolio	S26381-K457-E101/*-L101 mouse option removed (EOL)
2015-10-27	USB mouse portfolio	USB mouse order codes updated
2015-10-15	S26361-F5541-E414	comment as soon as available removed
2015-10-01	S26361-F5243-E660	changed comment: Cachecade and FastPath
2015-07-21		Added 2.5" HDD SAS 12G 10K.
2015-07-10	S26361-F2748-E537	NVS300 EOL End July
2015-06-24	S26361-F3301-E242	E-Star Fam2 Zertification added
2015-06-11	T26139-Y1751-E10	to Power cord for floorstand versions added
2015-06-05	S26361-F5541-E414	Fujitsu Battery Unit, added "as soon as available" (Mid 07/15)
2015-02-27	S26361-F5520-E*	Added 2.5" SAS 6G 15K HDD up to 600GB within 3.5" Carrier
2015-02-02	S26361-F3903-E600	Added HD SATA 6G 6TB 7.2K 512e HOT PL 3.5" BC
2014-12-15	S26361-F2748-E538	PGRA CP NVS 1GB VGA PCIe x16 added plus EOL dates for predecessor / first delivery
2014-10-09	S26361-F3852-E1	added new Single Port 1Gbit NIC
2014-08-27	S26361-F5528-E80/S26361-F552	80GB SSD removed.
2014-08-27	S26361-F5319-E*	3.5" SATA SSDs added.
2014-08-01		First Release