

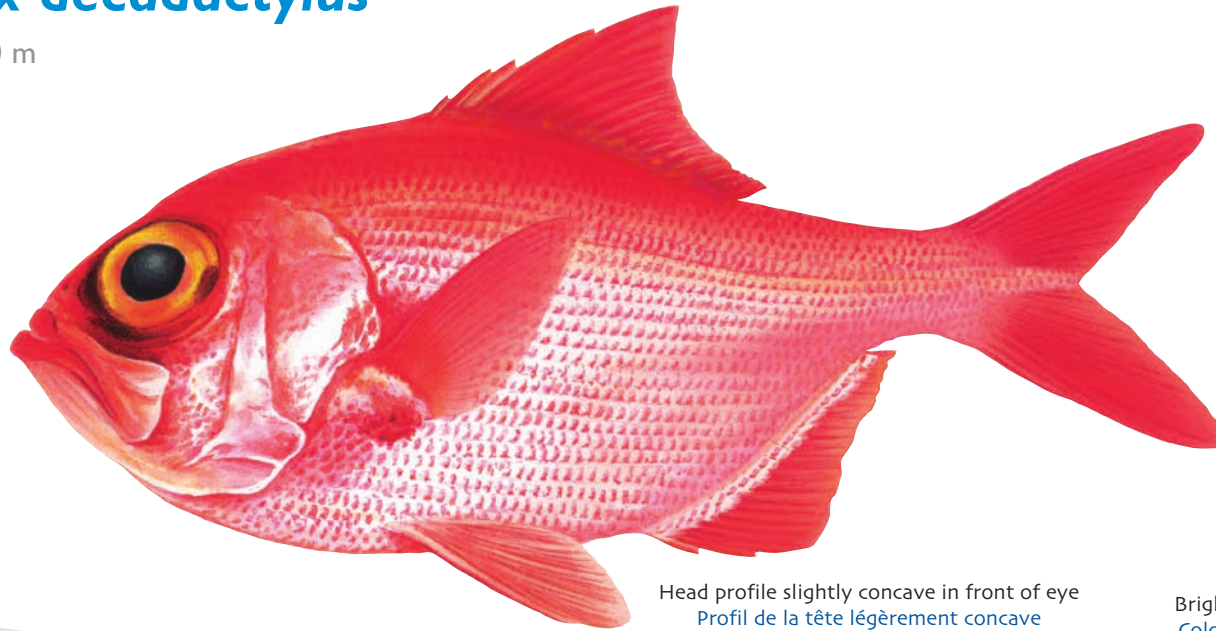
Other bony fish / Autres poissons osseux

Scientific	FAO code	English	French	Page
<i>Beryx decadactylus</i>	BXD	Alfonsino	Béryx commun	120
<i>Beryx splendens</i>	BYS	Splendid alfonsino	Béryx long	121
<i>Erythrocles schlegelii</i>	ERY	Japanese rubyfish	Poisson trompette de Schlegel	122
<i>Erythrocles scintillans</i>	ERZ	Golden kalikali	Poisson trompette scintillant	123
<i>Ostichthys japonicus</i>	HWJ	Japanese soldierfish, Brocade perch	Soldat japonais	124
<i>Ostichthys kaianus</i>	HWK	Kai soldierfish	Soldat japonais rayé	125
<i>Sargocentron spiniferum</i>	HVS	Sabre squirrelfish	Marignan sabre	126
<i>Argyrops spinifer</i>	KBR	Longspined seabream	Spare royal	127
<i>Heteropriacanthus cruentatus</i>	HTU	Glasseye	Beauclaire de roche	128
<i>Priacanthus hamrur</i>	BWH	Moontail bullseye	Beauclaire miroir	129
<i>Bodianus perditio</i>	BDT	Golden-spot hogfish	Labre de la perdition	130
<i>Branchiostegus wardi</i>	TIZ	Ward's tilefish	Tête de cheval	131
<i>Polymixia japonica</i>	PXJ	Silver eye	Œil d'argent	132
<i>Neoscombrops pacificus</i>	NSW	(No common name)	(Pas de nom commun)	133
<i>Pontinus macrocephalus</i>	PZM	Large-headed scorpionfish	Poisson scorpion grosse tête	134
<i>Triodon macropterus</i>	TDU	Threetooth puffer	Triodon jaune à point noir	135
<i>Decapterus tabl</i>	DCT	Roughear scad	Comète queue rouge	136
<i>Gymnosarda unicolor</i>	DOT	Dogtooth tuna	Bonite à gros yeux, Thon dents de chien	137
<i>Conger cinereus</i>	COI	Longfin conger	Congre oiro	138
<i>Muraenesox cinereus</i>	DPC	Daggertooth pike conger	Murénésoce-dague	139

Beryx decadactylus

110–1000 m

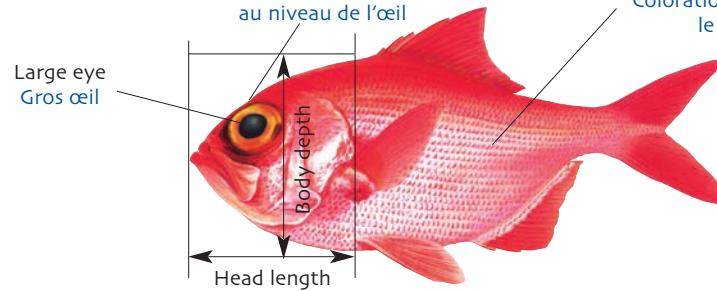
BXD



Head profile slightly concave in front of eye
Profil de la tête légèrement concave
au niveau de l'œil

Bright red all over head, body and fins
Coloration rouge vif sur toute la tête,
le corps et les nageoires

English: Alfonsino
French: Béryx commun
Japanese: Nanyokinme
Hawaiian: Alfonsin
Local:



Body depth significantly greater than head length
Hauteur du corps nettement supérieure à la longueur de la tête

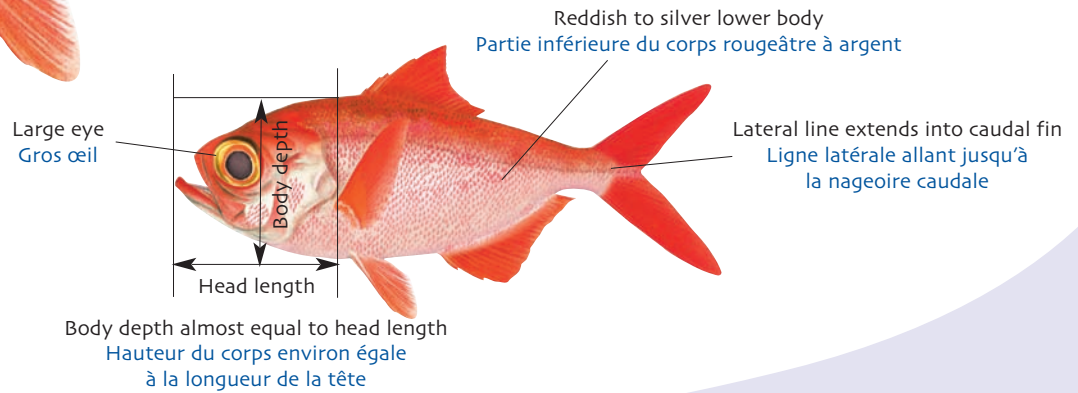
Beryx splendens

25–1300 m

BYS



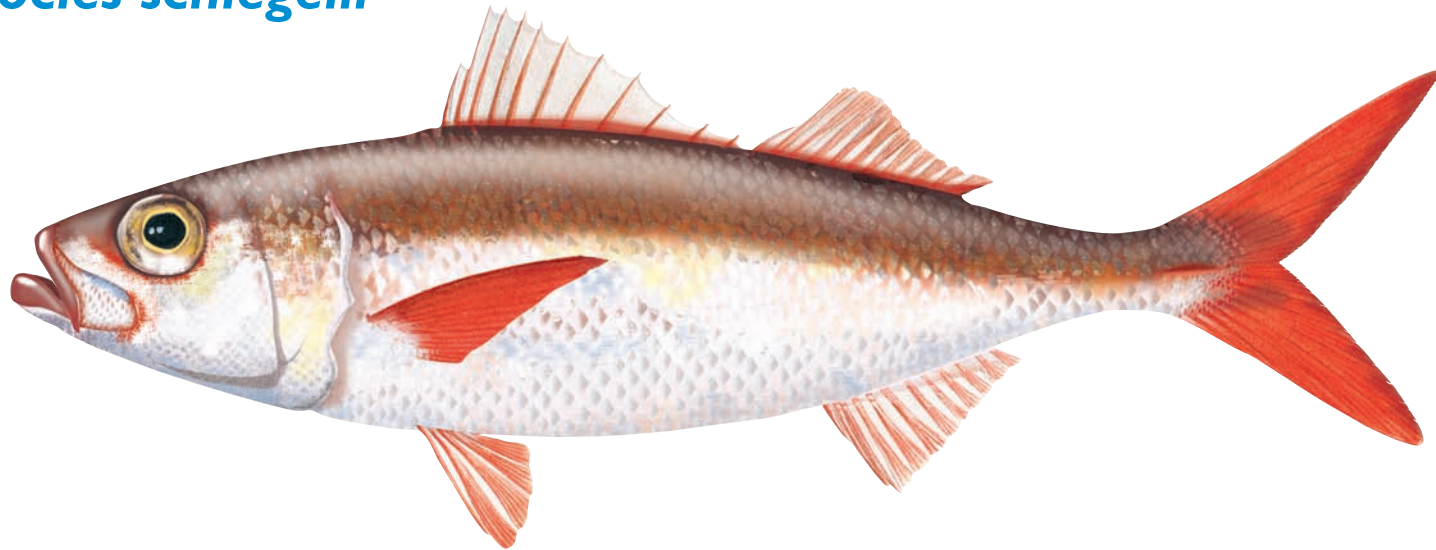
English: Splendid alfonsino
French: Béryx long
Japanese: Kimedai
Hawaiian: Alfonsin
Local:



Erythrocles schlegelii

50–250 m

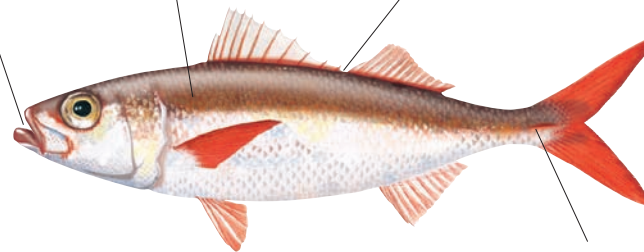
ERY



Mouth large and extends
with flexible jaw
Grosse bouche avec
mâchoire flexible
et extensible

Rough scales
Écailles rugueuses

Deeply notched dorsal fin
Nageoire dorsale avec une profonde échancrure



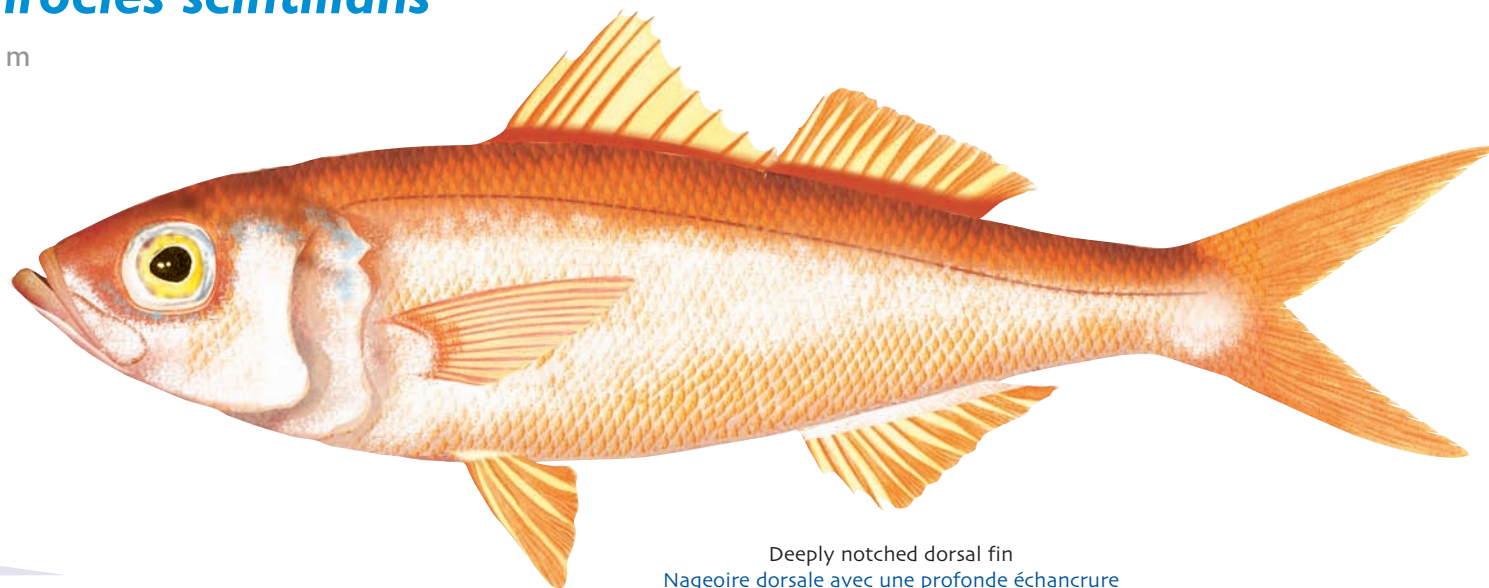
Distinct ridge or caudal keel
Arête ou carène caudale caractéristique

English: Japanese rubyfish
French: Poisson trompette
de Schlegel
Japanese: Hachibiki
Hawaiian: Golden kalekale
Local:

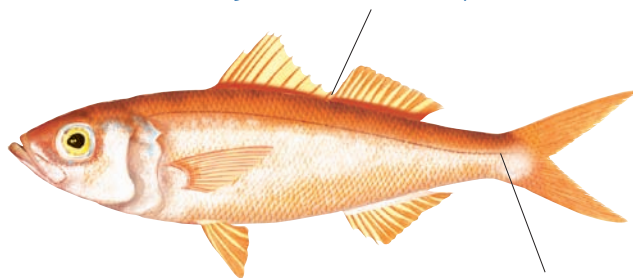
Erythrocles scintillans

250–350 m

ERZ



Deeply notched dorsal fin
Nageoire dorsale avec une profonde échancrure



No trace of ridge or caudal keel
Pas de trace d'arête ou de carène caudale

English: Golden kalikali
French: Poisson trompette scintillant
Japanese: Hawai-chibiki
Hawaiian: Golden kalekale
Local:

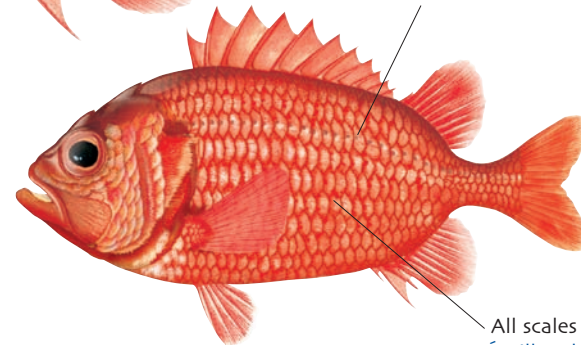
Ostichthys japonicus

150–350 m

HWJ



Body and fins silver-red with no distinct markings
Corps et nageoires rouge argenté, sans tache apparente



All scales clearly striated
Écailles clairement striées

English: Japanese soldierfish,
Brocade perch

French: Soldat japonais

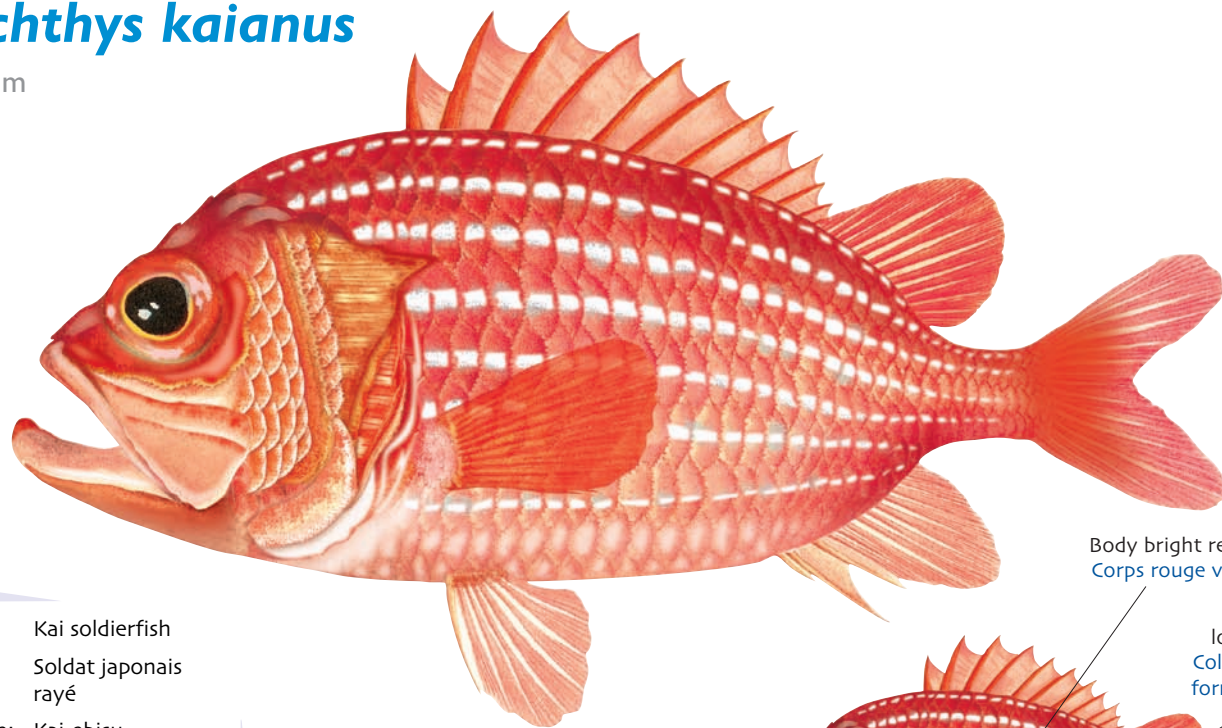
Japanese: Ebisudai

Local:

Ostichthys kaianus

310–640 m

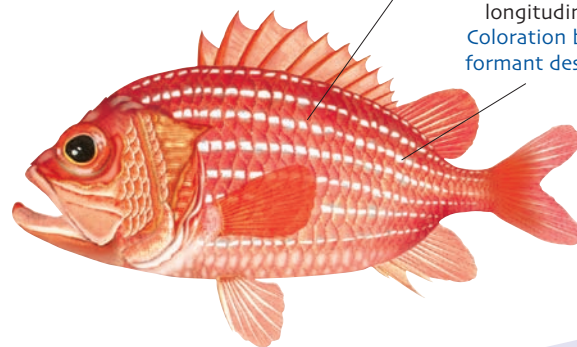
HWK



Body bright red
Corps rouge vif

Centre of scales white, forming
longitudinal white stripes along body
Coloration blanche au centre des écailles,
formant des raies longitudinales blanches
sur le corps

English: Kai soldierfish
French: Soldat japonais rayé
Japanese: Kai-ebisu
Local:



Other bony fish
Autres poissons osseux

Sargocentron spiniferum

1–120 m

HVS



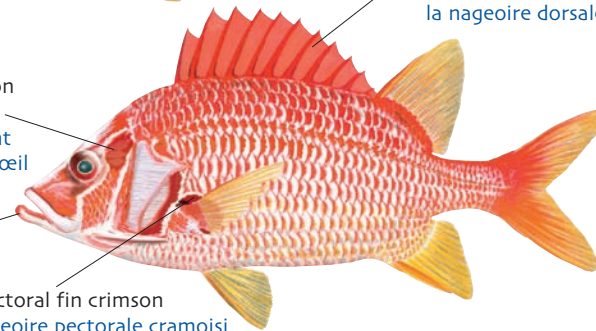
English: Sabre squirrelfish
French: Marignan sabre
Japanese: Togari-ebisu
Hawaiian: Ala'ihī
Local:

Large vertically elongated crimson spot on head behind eye
Grosse tache cramoisie s'étendant verticalement sur la tête, devant l'œil

Lower jaw protrudes when mouth closed
Mâchoire inférieure saillante lorsque la bouche est fermée

Inner axis of pectoral fin crimson
Axe intérieur de la nageoire pectorale cramoisi

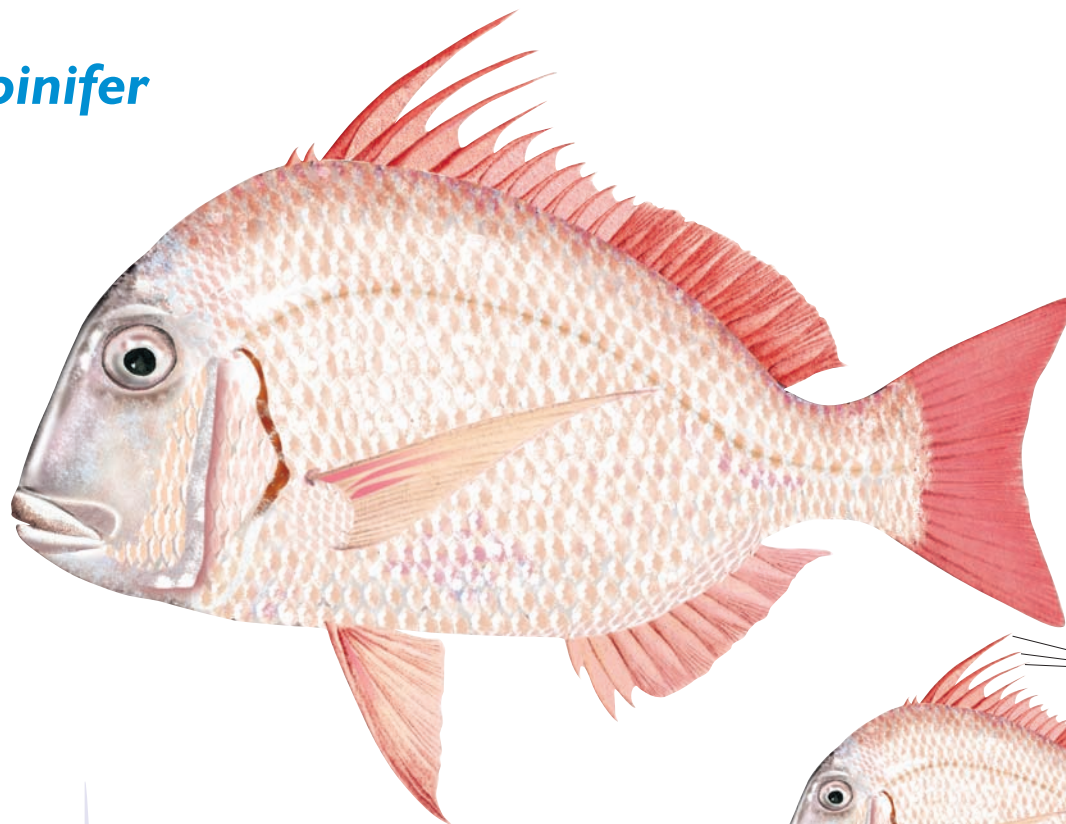
Spiny dorsal fin solid deep red
Coloration rouge profond sur toute la nageoire dorsale épineuse



Argyrops spinifer

1–150 m

KBR



English: King soldier
bream

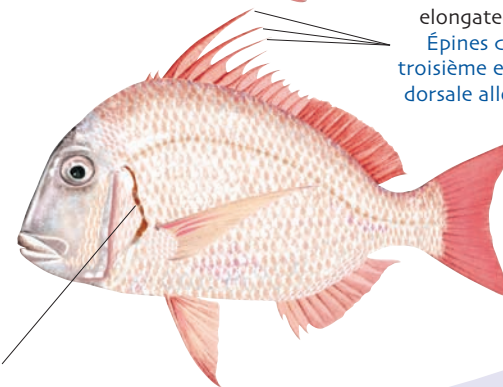
French: Spare royal

Japanese: Taiwandai

Local:

Third to fifth dorsal spines
elongated and filamentous
Épines comprises entre la
troisième et la cinquième épine
dorsale allongées et filiformes

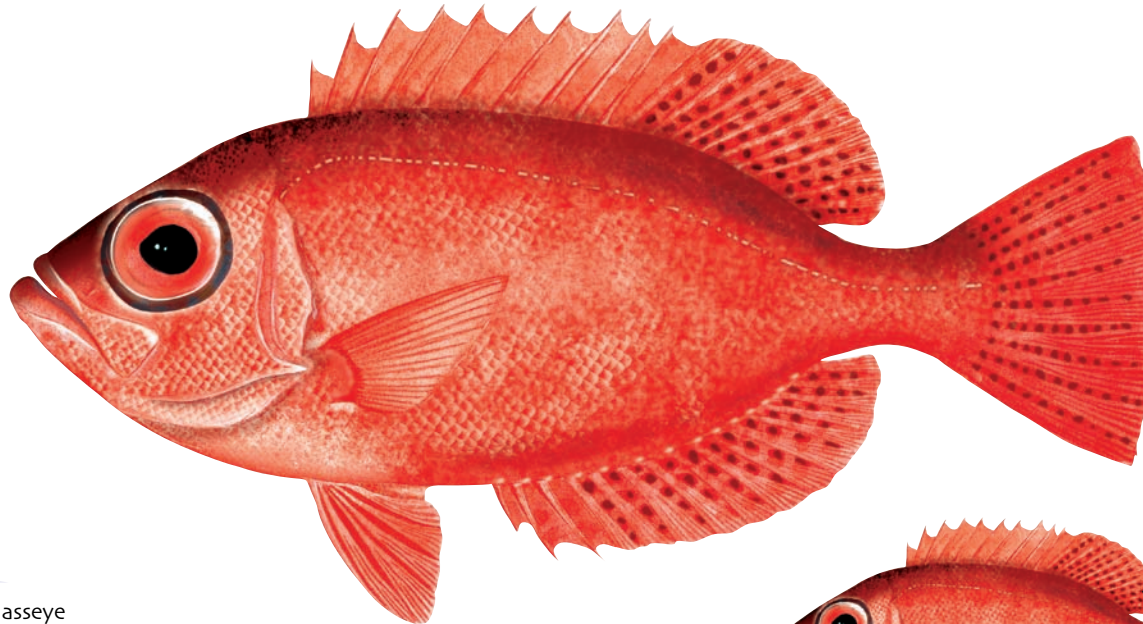
Dark-red margin on upper part of gill cover
Bordure rouge foncé sur la partie supérieure
de l'opercule



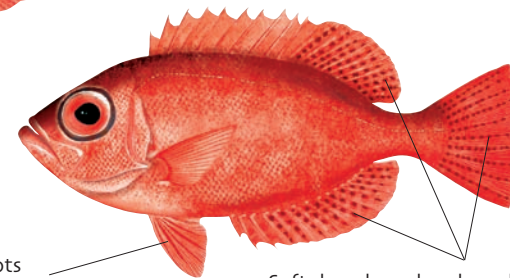
Heteropriacanthus cruentatus

3–300 m

HTU



English: Glasseye
French: Beauclaire de roche
Japanese: Gomahire-kintoki
Hawaiian: Deep sea aweoweo
Local:



Pelvic fins dusky or pale with no spots
Nageoires pelviennes mates ou pâles, sans tache

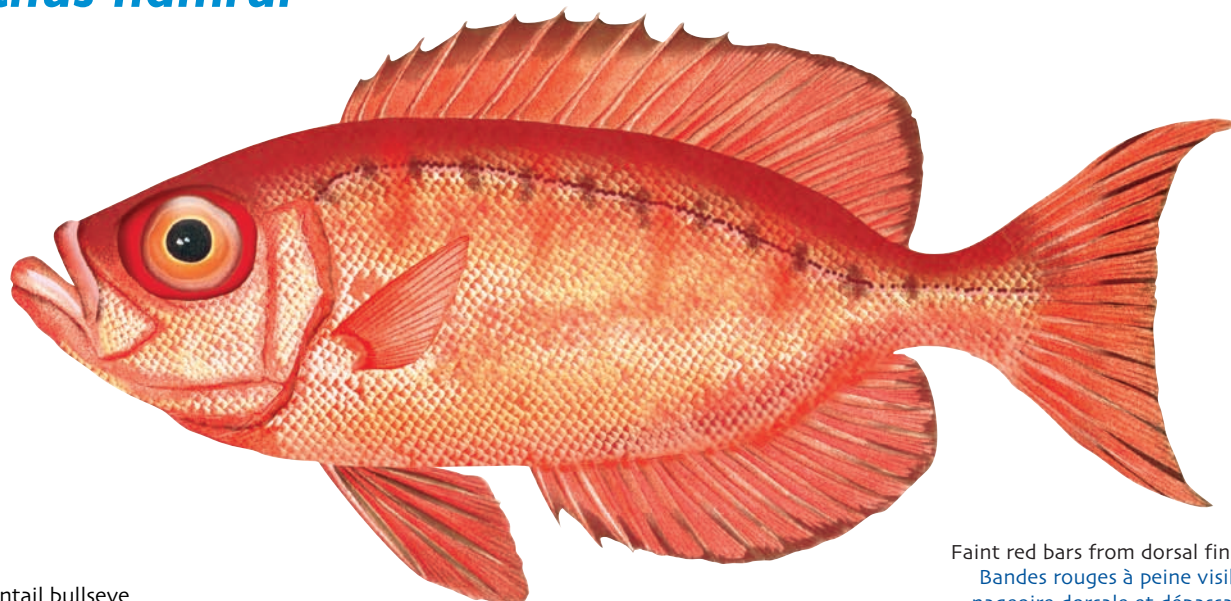
Soft dorsal, anal and caudal fins have rows of small dark-brown spots
Rangées de petites taches brun foncé sur les nageoires dorsale à rayons mous, anale et caudale

Caudal fin truncate
Nageoire caudale tronquée

Priacanthus hamrur

8–250 m

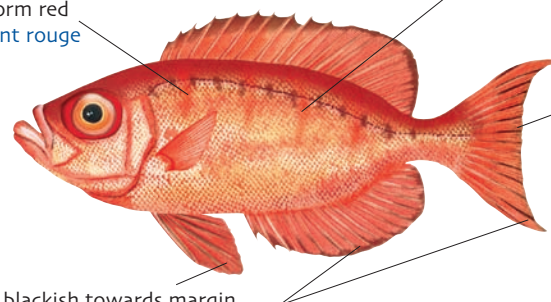
BWH



English: Moontail bullseye
French: Beauclaire miroir
Japanese: Hoseki-kintoki
Hawaiian: Aweoweo
Local:

Body colour uniform red
Corps uniformément rouge

Faint red bars from dorsal fin to below lateral line
Bandes rouges à peine visibles, partant de la nageoire dorsale et dépassant la ligne latérale



Caudal fin has concave margin, almost lunate
Bordure de la nageoire caudale concave, quasiment en forme de croissant

Pelvic, anal and caudal fins slightly blackish towards margin
Nageoires pelvienne, anale et caudale légèrement noirâtres sur les bords

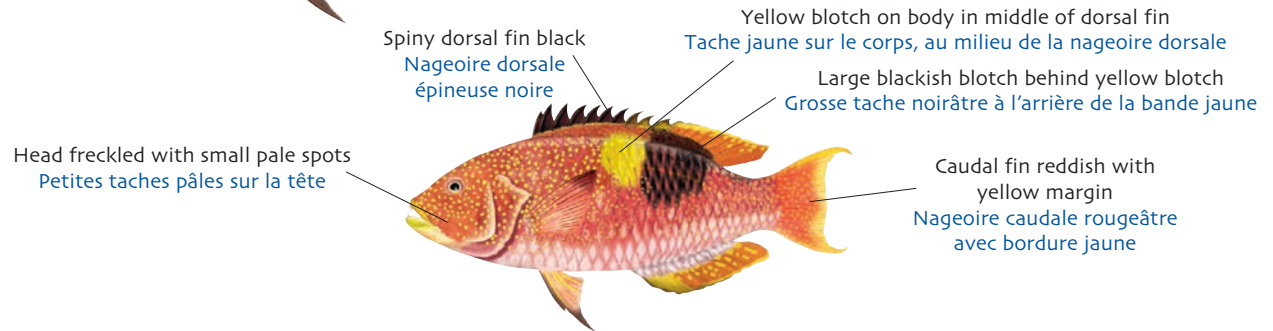
Bodianus perditio

10–220 m

BDT



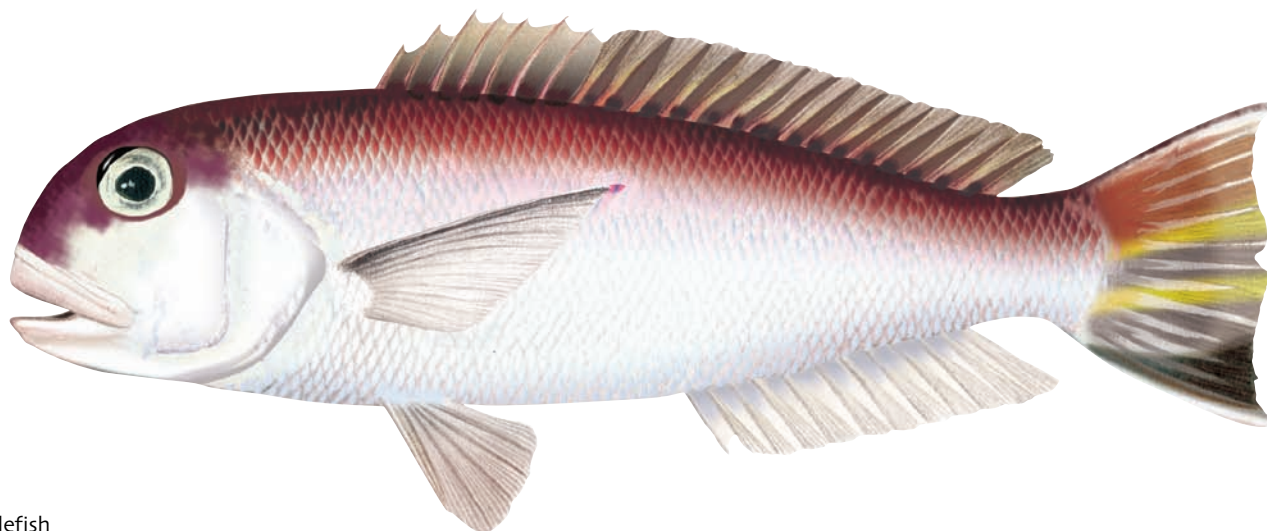
English: Golden-spot hogfish
French: Labre de la perdition
Japanese: Takibera
Local:



Branchiostegus wardi

100–250 m

TIZ



English: Ward's tilefish
French: Tête de cheval
Japanese: Minami-amadai
Hawaiian: Amadai
Local:



Caudal fin has dark triangle on lower lobe and two yellow stripes above
Triangle sombre sur le lobe inférieur de la nageoire caudale et deux raies jaunes sur le dessus

Polymixia japonica

160–630 m

PXJ

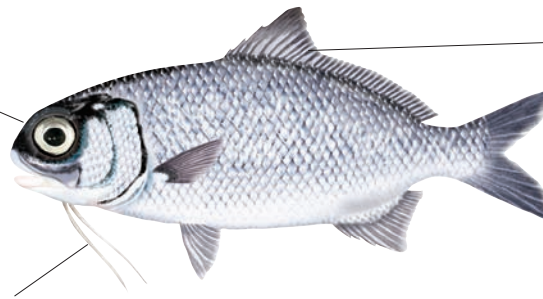


English: Silver eye
French: Œil d'argent
Japanese: Ginmedai
Hawaiian: Deep sea moi
Local:

Rounded snout
Museau arrondi

Two barbels under mouth
Deux barbillons sous la bouche

Tips of dorsal and caudal fins blackish
Extrémités des nageoires dorsale
et caudale noirâtres



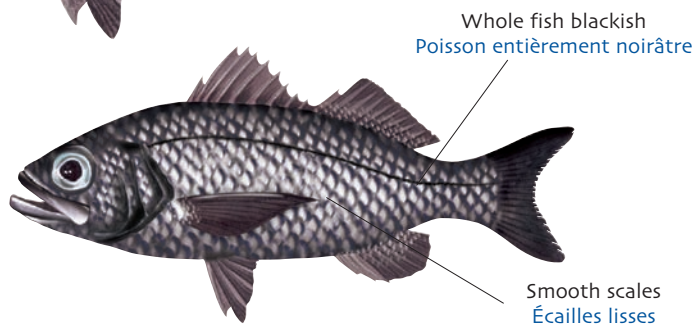
Neoscombrops pacificus

60–500 m

NSW



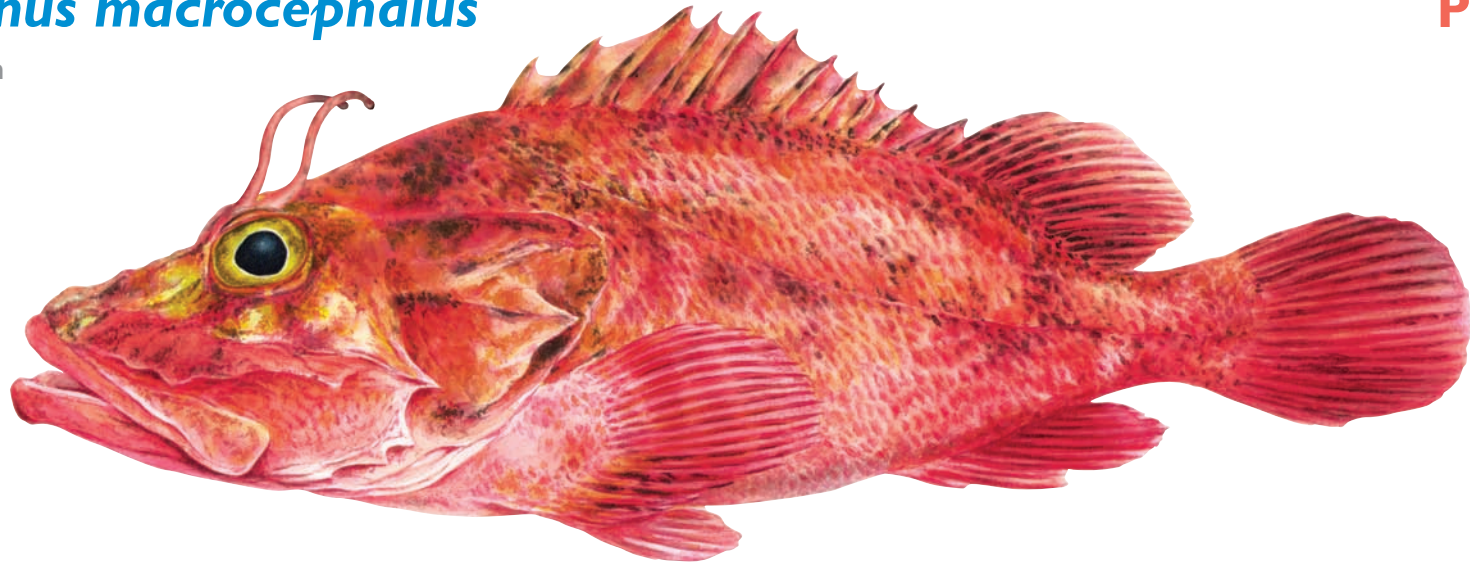
English: (No known common name)
French: (Pas de nom commun connu)
Japanese: Bakemutsu
Local:



Pontinus macrocephalus

170–275 m

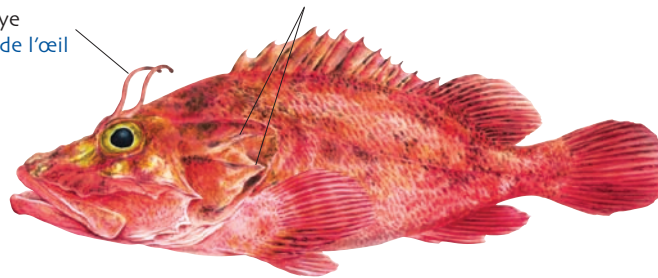
PZM



- English: Large-headed scorpionfish
French: Poisson scorpion grosse tête
Japanese: Hiodoshi
Hawaiian: No-hu, O'opu kai nohu
Local:

Tentacles over eye
Tentacules au-dessus de l'œil

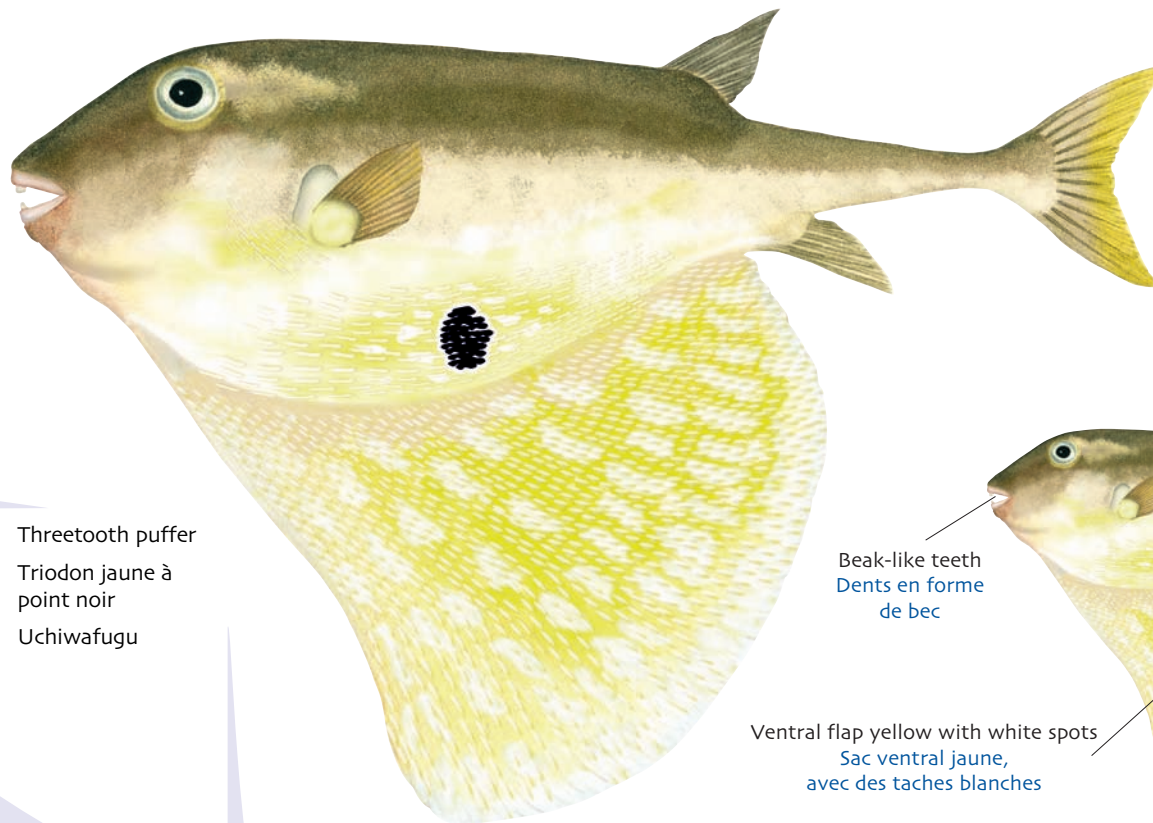
Two spines on gill cover
Deux épines sur l'opercule



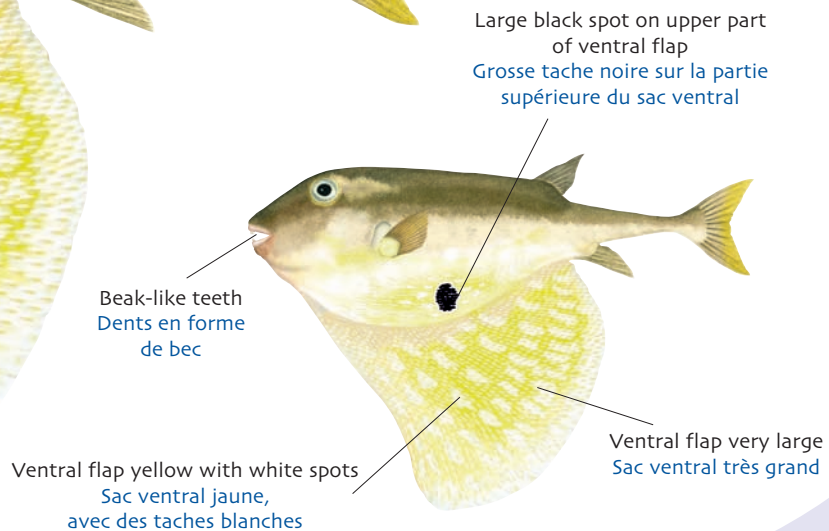
Triodon macropterus

50–300 m

TDU



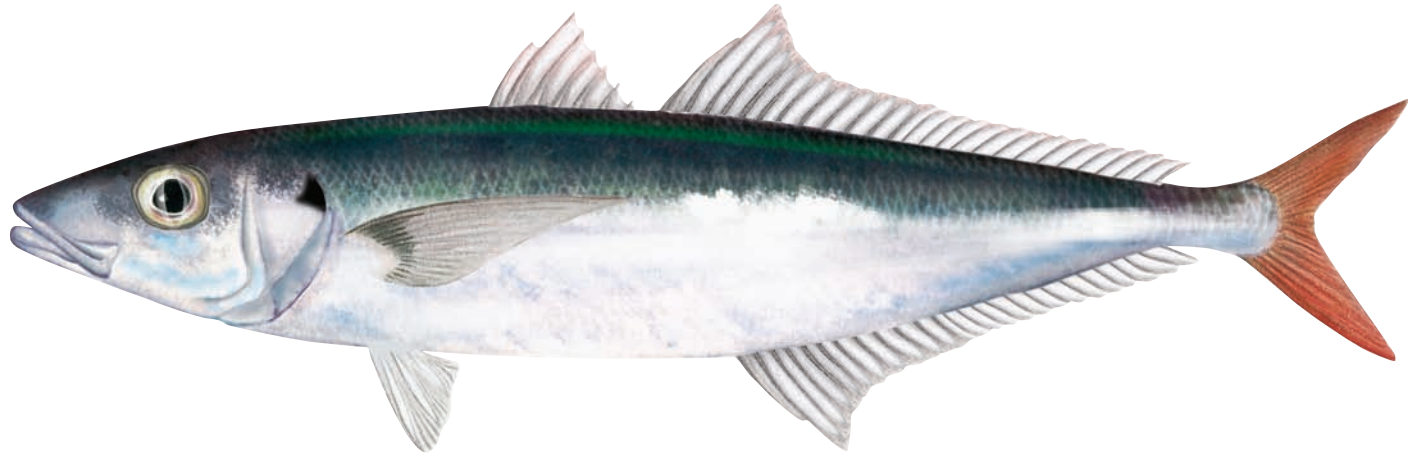
English: Threetooth puffer
French: Triodon jaune à point noir
Japanese: Uchiwafugu
Local:



Decapterus tabl

200–360 m

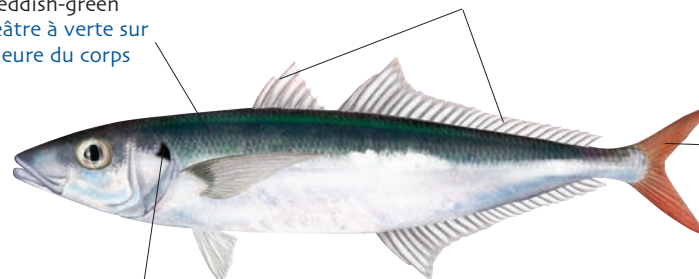
DCT



English: Roughear scad
French: Comète queue rouge
Japanese: Oaka-muro
Local:

Upper body reddish-green
Coloration rougeâtre à verte sur
la partie supérieure du corps

First and second dorsal fins reddish
Première et seconde dorsales rougeâtres



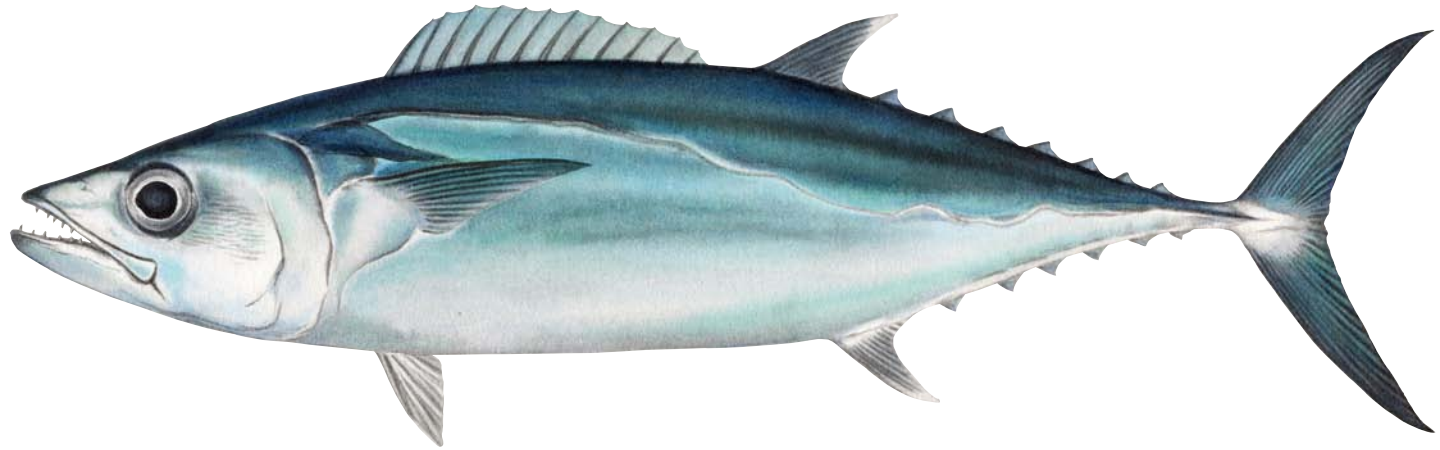
Caudal fin bright red
Nageoire caudale rouge vif

Small black spot on top edge of gill cover
Petite tache noire sur le bord supérieur de l'opercule

Gymnosarda unicolor

1–120 m

DOT



English: Dogtooth tuna
French: Bonite à gros yeux, Thon dents de chien
Japanese: Iso-maguro
Local:

Cone-shaped (dog-like) teeth
in a large mouth
Dents coniques (dents de chien)
dans une large gueule

Obvious wavy lateral line
Ligne latérale sinueuse clairement visible



Conger cinereus

1–200 m

COI



Dorsal fin starts in line with centre
of pectoral fin
Extrémité antérieure de la nageoire
dorsale sur la même ligne que le
milieu de la nageoire pectorale

English: Longfin conger

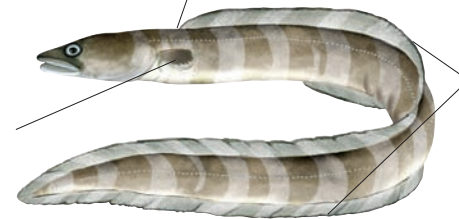
French: Congre oiro

Japanese: Kiri-anago

Hawaiian: Tohej, White eel,
Puli-uha

Local:

Black spot on pectoral fin
Tache noire sur la nageoire pectorale

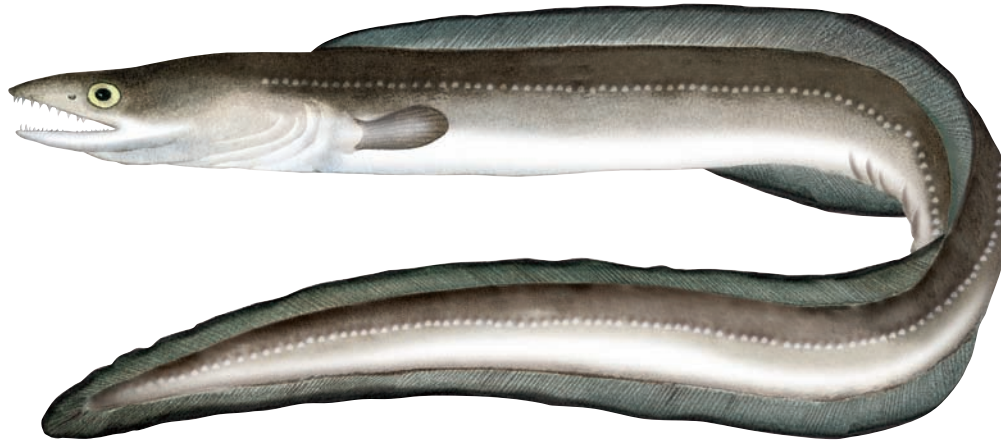


Narrow black margin on
dorsal and anal fins
Fin liseré noir sur les
nageoires dorsale et anale

Muraenesox cinereus

1-740 m

DPC



English: Daggertooth pike conger
French: Murénésoce-dague
Japanese: Hamo
Local:

Elongated snout
Museau allongé

Gill openings of the two sides nearly meet on ventral side
Orifices branchiaux se rejoignant presque au niveau du ventre

