



SPRING
SUMMER
2012
RUCSACS

4	alpine	PRODUCTS: COLUMBIAN THERMOLITE THERMOLITE
8	lightweight	PRODUCTS: T812 SLIM T8.800
14	re-fuel	PRODUCTS: RE-FUEL
16	backpacking	PRODUCTS: B19.800 B21.700 B25.000 B25.000 B25.000 B25.000 B25.000 B25.000
30	airspace	PRODUCTS: AIRSPACE
36	day trekkers	PRODUCTS: DAY TREKKERS DAY TREKKERS DAY TREKKERS
44	travel	PRODUCTS: TRAVEL
50	urban	PRODUCTS: URBAN
54	contact	PRODUCTS: CONTACT

1946: Karrimor was founded by Charles and Mary Parsons

1957: First climbing sacs produced in conjunction with Jimmy Froston



1959: Karrimor starts work with Joe Brown* and introduces the highly acclaimed Joe Brown Rucksack. Joe is widely regarded as the outstanding pioneering English rock climber of the 1950s and early 1960s.



1964: Karrimor starts a decade of domination of the UK market with the Alpine sac, born of partnership with Don Willians*
*Don Willians was an English rock climber and mountaineer who pioneered many new routes, and was considered the technical equal of both.

1966: Karrimor introduce pack frames



1972: Karrimor appoints Douglass Haston* as its first and only female ambassador. The most famous alpine sac ever
*Douglass Haston was a Scottish mountaineer born in Perthshire on an expedition led by Chris Bonington.



1975: Chris Bonington's Everest South West Face expedition is successful, fully equipped with Karrimor products.
*Sir Chris Bonington, CVO, CBE, DL, his career has included 14 expeditions to the world's highest mountains, including four to Mount Everest and the first ascent of the south face of Annapurna



1975: Junko Tabei* of Japan becomes the first woman to climb Everest, using a Karrimor pack frame sac.
*Junko Tabei is a Japanese mountain climber who became the first woman to reach the summit of Mount Everest on May 16, 1975.



1978: Peter Habeler* achieves the first ascent of Everest without oxygen using Karrimor equipment.
*Peter Habeler is an Austrian mountaineer. The most notable event was the first ascent without supplemental oxygen of Mount Everest in 1978 which had previously been thought to be impossible.

1983: Introduction of the size adjustable back system for rucksacs

2007: Karrimor develop new X-Lite products



2010: Bontita Norris* becomes the youngest British female to summit Everest

In the autumn of 2009 she became the youngest woman in history to reach the false summit of Mt. Manaslu in the Himalayas, the world's eighth highest mountain, at 8163m. Bontita's first experience of high altitude mountaineering meant negotiating a crevasse field over a mile long, avalanche prone slopes, steep sections of blue ice and walls of near vertical ice and snow. She reached the saddle summit alongside her team on the 28th September 2009 at 8.30am after 30 days on the expedition.

Back in England Bontita is a keen outdoor enthusiast. Trail running, biking and rock climbing are her main pursuits.

In March 2010 she was fortunate to secure a place on Kenton Cook's 2010 Everest expedition. Bontita topped out on the 17th May at 10.30am after beginning her ascent from Pangboche village at 4000m, to Everest's summit at 8848m in six days.

On returning to base camp, Bontita became the youngest British woman to climb Everest and one of the youngest women in history to have stood on top of the world. She wanted to inspire young people to broaden their own horizons and take on a challenge in the outdoors.

"Karrimor is synonymous with the Great British outdoors - ever since I first ventured into the hills of North Wales I have seen how trusted Karrimor is as a brand by both hill walkers and mountaineers alike. To be invited to become a brand ambassador for such an iconic brand is a dream come true"

Bontita Norris

Youngest British female to summit Mt Everest

Bontita





alpine

The Karrimor

Alpine range continues to **set the standard** in alpine design and

innovation, focused

on performance and embracing the ethos on which Karrimor has built its reputation.

From the **Hasten Alpiniste**

In the early 70 s as a pioneering alpine rucksack to today's **modern** climbing packs

Karrimor

continues

to be

at the forefront

of

design

and

technology.



alpiniste

Alpiniste 45+10 10501

Weight 1490g
1290g (stripped)

Fabric N420D Dynatec
N420D HD

Features:

- _____ Airmesh back system with removable Fform frame
- _____ Removable hipbelt
- _____ External hydration sleeve access
- _____ 3 point haul system
- _____ Easy access gear loops
- _____ Wand pockets
- _____ Top tension straps
- _____ Chest strap
- _____ Rope compression strap
- _____ Extendable lid
- _____ Bungee system
- _____ Protective front print
- _____ Splashguard zips
- _____ Axe loops and retainers



Colourways:

- * Flame/ Flame
- Black/ Black
- Bluebird/ Bluebird

Alpiniste 35+10 10502

Weight 1450g
1250g (stripped)

Fabric N420D Dynatec
N420D HD

Features:

- _____ Airmesh back system with removable Fform frame
- _____ Removable hipbelt
- _____ External hydration sleeve access
- _____ 3 point haul system
- _____ Easy access gear loops
- _____ Wand pockets
- _____ Top tension straps
- _____ Chest strap
- _____ Rope compression strap
- _____ Extendable lid
- _____ Bungee system
- _____ Protective front print
- _____ Splashguard zips
- _____ Axe loops and retainers



Colourways:

- * Bluebird/ Bluebird
- Black/ Black
- Flame/ Flame

Inotrock



Colourways:

*Black/ Black
Bluebird/ Bluebird
Flame/ Flame



Hot Rock 40 10503

Weight 990g

Fabric N420D Dynatec
N420D HD

Features:

Airmesh back system with Fform frame

Hipbelt

hydration sleeve

3 point haul system

Mitt friendly grab handle

Side compression straps

Wand pockets

Chest strap

Lid pocket with key clip

Bungee system

Axe loops and retainers



Colourways:

*Bluebird/ Bluebird
Flame/ Flame
Black/ Black



Hot Rock 30 10504

Weight 965g

Fabric N420D Dynatec
N420D HD

Features:

Airmesh back system with Fform frame

Hipbelt

Hydration sleeve

3 point haul system

Mitt friendly grab handle

Side compression straps

Wand pockets

Chest strap

Lid pocket with key clip

Bungee system

Axe loops and retainers



pitch

Pitch 18 10505

Weight 680g

Fabric N420D Dynatec
N420D HD

Features:

Airmesh back system Fform frame

Removable waist belt

Hydration sleeve

3 point haul system

Mitt friendly grab handle

Easy access gear loops

Side compression & chest straps

Security pocket with key clip

Axe loop and retainer

Splashguard zips

Zipped front compartment

Chest strap



Colourways:

*Flame/ Flame
Black/ Black
Bluebird/ Bluebird







Lightweight

The **Karrimor X-lite** range is all new for SS12 and offers a unique combination

of **stability, comfort, and functionality** within the lightest of **Karrimor frames.**

Suitable for a range of different activities including **backpacking, climbing, walking, running and cycling** the **X-lite** range is an **ideal** choice for those wanting to maximise **space and performance** while minimising weight.

X Lite

12

F

H₂O

X-Lite 45+10	15347
Weight	1250g 1050g (stripped)
Fabric	N210D Stripe Ripstop

Features:

- Adjustable Fformat backsystem
- Hipbelt
- Hipbelt pockets
- Expansion front pocket
- Stretch wand pockets
- Multi point side compression
- Base compartment with U shape opening
- Walking pole holder
- Zippered lid pocket
- Dual drawcord bivi closure
- Extendable Lid
- Hydration system compatible
- Reflective logo
- Chest strap



Colourways:

*Black/ Pewter/ Flame
Classic Green/ Jelly bean/ Frost
Flame/ Frost/ Pewter



Colourways:

* Classic Green/ Jelly bean/ Frost
Black/ Pewter/ Flame
Flame/ Frost/ Pewter

X-Lite 35+5 15348

Weight 1000g
650g (stripped)

Fabric N210D Stripe Ripstop

Features:

- Removable Fformat backsystem
- Removable hipbelt
- Gear loops
- Wand pockets
- Side compression with ski carry option
- Twin ice axe carry system
- Zipped lid pocket
- Dual drawcord bivi closure
- Extendable lid
- Hydration system compatible
- Reflective logo
- Chest strap



X-Lite 40+5 features removable moulded hipbelt & removable Fformat backsystem



Colourways:

* Flame/ Frost/ Pewter
Classic Green/ Jelly bean/ Frost
Black/ Pewter/ Flame

X-Lite 30 15349

Weight 950g
760g (stripped)

Fabric N210D Stripe Ripstop

Features:

- Removable Fformat backsystem
- Hipbelt
- Hipbelt pocket
- Stretch mesh front pocket
- Stretch mesh wand pockets
- Side compression
- Walking pole holder
- Zipped pocket lid
- Dual drawcord bivi closure
- Hydration system compatible
- Chest strap
- Reflective logo



X Lite

X-Lite 20 15350

Weight 790g
500g (stripped)

Fabric N210D Stripe Ripstop
N420D HD

Features:

- _____ RCT back system (refuel chassis technology)
- _____ with removable Fformat.
- _____ Bladder included
- _____ Self close bladder sleeve
- _____ Removable waistbelt
- _____ Light holder clip loop
- _____ Walking pole holder
- _____ Security pocket and kep clip
- _____ Side compression
- _____ Chest strap
- _____ Front Bungee
- _____ Stretch mesh wand pockets
- _____ Reflective logo



Colourways:
*Black/ Pewter/ Flame
Classic Green/ Jelly bean/ Frost
Flame/ Frost/ Pewter

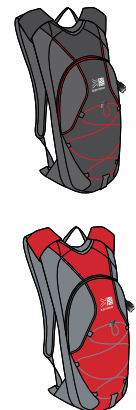
X-Lite 2+2 15351

Weight 500g
380g (stripped)

Fabric N210D Stripe Ripstop
N420D HD

Features:

- _____ RCT back system [refuel chassis technology]
- _____ Bladder included
- _____ Self close bladder sleeve
- _____ Removable waistbelt
- _____ Light holder clip loop
- _____ Security pocket and key clip
- _____ Chest strap
- _____ Front bungee
- _____ Reflective logo



Colourways:
*Classic Green/ Jelly bean/ Frost
Black/ Pewter/ Flame
Flame/ Frost/ Pewter

Raid 2	15352
Weight	120g
Fabric	N210StripeRipstop

Features:

Supercool padded back

Front and top pockets

Key clip

Reflective logo



Colourways:

* Flame

Black

Classic Green

Raid 1	15353
Weight	90g
Fabric	N210StripeRipstop

Features:

Supercool padded back

Front pocket

Key clip

Reflective logo



Colourways:

* Classic Green

Black

Flame

RE-FUEL

The Karrimor re-fuel range

allows for

hydration on the move.

A great companion for

runs, cycles and

walks;

allowing you to take on

valuable fluid

when you

need it most.

All re-fuels come with

a hydration

bladder which

is compatible

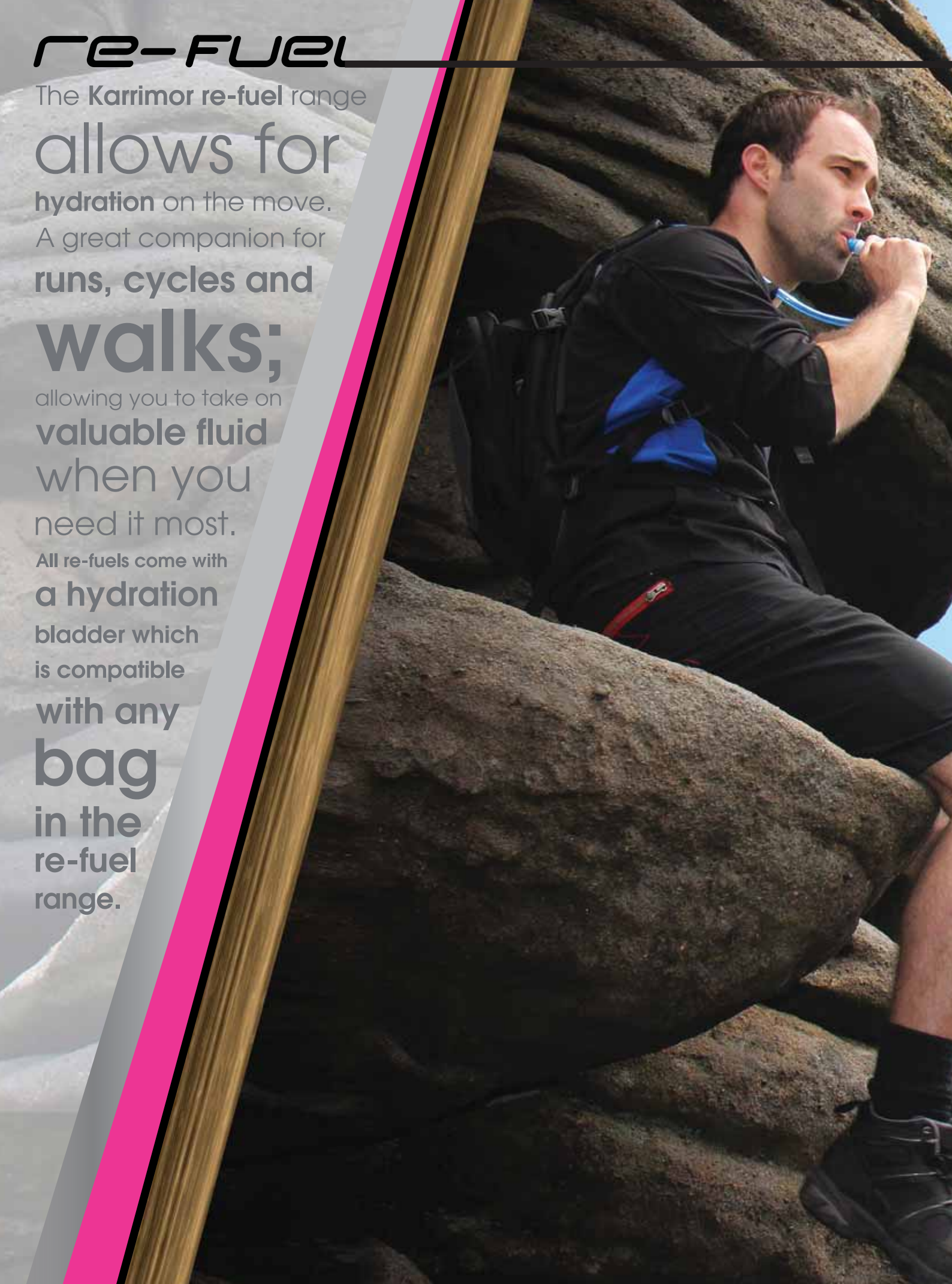
with any

bag

in the

re-fuel

range.





12



Colourways

- * Camo/ Black
- Pewter/ Black
- True Blue/ Black



Re-Fuel 15+2	15354
Weight	790g 670g (stripped)
Fabric	P600D P1680D Ballistic

Features:

- RCT back system (refuel chassis technology)
- Bladder included
- Self close bladder sleeve
- Waistbelt
- Light holder clip loops
- Security pocket and key clip
- Internal organiser
- Stretch mesh front pocket
- Soft liner multimedia pocket
- Side compression
- Chest strap



12



Colourways

- * Pewter/ Black
- Camo/ Black
- True Blue/ Black



Re-Fuel 8+2	15355
Weight	730g 610g (stripped)
Fabric	P600D P1680D Ballistic

Features:

- RCT back system (refuel chassis technology)
- Bladder included
- Self close Bladder sleeve
- Removable waistband
- Light Holder clip loops
- Security pocket and key clip
- Internal organiser
- Front expansion stash pocket
- Front pocket
- Side compression
- Chest strap



12



Colourways

- * True Blue/ Black
- Pewter/ Black
- Camo/ Black



Re-Fuel 2+2	15356
Weight	1450g 1250g (stripped)
Fabric	P600D P1680D Ballistic

Features:

- RCT back system (refuel chassis technology)
- Bladder included
- Self close bladder sleeve
- Removable waistbelt
- Light holder clip loops
- Security pocket and key clip
- Internal organiser
- Chest strap



Backpacking

Since 1946 Karrimor have been leading **innovation** in backpacking. As the UK's largest backpacking company Karrimor have introduced **new technologies** to **evolve** the backpacking experience, designing **size adjustable** packs in the early 80's which **revolutionised** the industry.

The SS12 range is all new and is the most comprehensive backpacking range yet. Now with **4 levels** of size adjustable back systems, all offering a

customised fit with **extreme simplicity**.

Continuous improvement

of the tried and tested harnesses, hip belts and load balance systems provide consistent comfort for load carrying, **enhancing**

your
backpacking
journey



JAGUAR

Jaguar ST 75-95 15357

Weight 2650g

Fabric N420D Dynatec
N420D HD
Hypalon

36



Features:

SA[®] backsystem

Adjustable shoulder and chest straps

Hydration system compatible

3 point X wing compression

Base load straps

Rope strap

Expansion side pockets

Extending lid with 2 pockets

U shape base compartment and main body access

Lid bungee

Ice axe/walking pole attachment points

Front and wand pockets

Internal compression straps and mesh pocket

Front grab handle

Splashguard zips

Raincover



Colourways:
*Black/ Pewter/ Flame



Colourways:

*Director Blue/ Pewter
Black/ Pewter
Ruby/ Dark fire



Jaguar 55-75	15358
Weight	2700g
Fabric	N420D Dynatec N420D HD Hypalon

Features:

- SA³ backsystem
- Adjustable shoulder and chest straps
- Hydration system compatible
- 3 point X wing compression
- Base load straps
- Rope strap
- Expansion side pockets
- Extending lid with 2 pockets
- U shape base compartment and main body access
- Lid bungee
- Front and Wand pockets
- Internal compression straps and mesh pocket
- Front grab handle



Colourways:

*Malaga/ Frost
Frost/ Pewter



Jaguar 55-75 (Female)	15359
Weight	2700g
Fabric	N420D Dynatec N420D HD Hypalon

Features:

- Ladies SA³ backsystem
- Adjustable shoulder and chest straps
- Hydration system compatible
- 3 point X wing compression
- Base load straps
- Rope strap
- Expansion side pockets
- Extending lid with 2 pockets
- U shape base compartment and main body access
- Lid bungee
- Front and Wand pockets
- Internal compression straps and mesh pocket
- Front grab handle
- Raincover



cheetah

Cheetah 60-85 15360

Weight 2550g

Fabric N420D Dynatec
N420D HD
Hypalon

Features:

- SA² backsystem
- Hydration system compatible
- Side compression straps
- Base load straps
- Rope strap
- Expansion side pockets
- Extending lid with 2 pockets
- Base compartment
- U shape main body access
- Lid bungee
- Ice axe and walking pole attachment
- Front and wand pockets
- Internal compression straps
- Raincover

36



Colourways:

- *Ruby/ dark fire
- Black/ pewter
- Director blue/ pewter



Cheetah 50-70 15361

Weight 2450g

Fabric N420D Dynatec
N420D HD
Hypalon

Features:

- SA² backsystem
- Hydration system compatible
- Side compression straps
- Base load straps
- Rope strap
- Expansion side pockets
- Extending lid with 2 pockets
- Base compartment
- U shape main body access
- Lid bungee
- Ice axe and walking pole attachment
- Front and wand pockets
- Internal compression straps
- Raincover

36



Colourways:

- *Calliste green/ tank
- Black/ pewter
- Director blue/ pewter

Cheetah 50-70 (Female) 15362

Weight 2450g

Fabric N420D Dynatec
N420D HD
Hypalon

Features:

- Ladies SA² backsystem
- Hydration system compatible
- Side compression straps
- Base load straps
- Rope strap
- Expansion side pockets
- Extending lid with 2 pockets
- Base compartment
- U shape main body access
- Lid bungee
- Ice axe and walking pole attachment
- Front and wand pockets
- Internal compression straps
- Raincover

36



Colourways:

- *Green slate/ indian teal
- Amethyst/ frost
- Frost/pewter



Colourways:

- *Ruby/ dark fire
- Black/pewter
- Calliste green/tank

Caracal 45-55	15363
Weight	2150g
Fabric	N420D Dynatec N420D HD Hypalon

Features:
SA ² backsystem
Hydration system compatible
Side compression straps
Base load straps
Rope strap
Expansion side pockets
lid with 2 pockets
Base compartment
U shape main body access
Lid bungee
Ice axe and walking pole attachment
Front and wand pockets
Internal compression straps
Raincover



Colourways:

- *Amethyst/ frost
- Malaga/ frost
- Green slate/indian teal

Caracal 45-55 (Female)	15364
Weight	2150g
Fabric	N420D Dynatec N420D HD Hypalon

Features:
Ladies SA ² backsystem
Hydration system compatible
Side compression straps
Base load straps
Rope strap
Expansion side pockets
lid with 2 pockets
Base compartment
U shape main body access
Lid bungee
Ice axe and walking pole attachment
Front and wand pockets
Internal compression straps



COUGAR

Cougar 60-70	15365
Weight	2100g
Fabric	P450D Ripstop N420D HD Hypalon

- Features:**
- SA² backsystem
 - Hydration system compatible
 - Side compression
 - Base load straps
 - Rope strap
 - Expansion side pockets
 - 2 lid pockets
 - Base compartment
 - Side zip main body access
 - Lid bungee
 - Ice axe and walking pole attachment points
 - Front and wand pockets
 - Raincover



Colourways:
 *Black/ pewter
 Calliste green/ tank
 Ruby/ dark fire

Cougar 60-70 female	15366
Weight	2100g
Fabric	P450D Ripstop N420D HD Hypalon

- Features:**
- Ladies SA² backsystem
 - Hydration system compatible
 - Side compression
 - Base load straps
 - Rope strap
 - Expansion side pockets
 - 2 lid pockets
 - Base compartment
 - Side zip main body access
 - Lid bungee
 - Ice axe and walking pole attachment points
 - Front and wand pockets
 - Raincover



Colourways:
 *Frost/ pewter
 Green slate/ indian teal
 Malaga/ frost



Colourways:

*Black/ pewter
Director blue/ pewter

Tryfan 60-70	15376
Weight	1850g
Fabric	P450D Ripstop N420D HD Hypalon
Features:	
SA ² backsystem	
Hydration system compatible	
Side compression	
Base load straps	
Expansion side pockets	
2 lid pockets	
Base compartment	
Side zip main body access	
Lid bungee	
Ice axe and walking pole attachment points	
Wand pockets	
Raincover	



Colourways:

*Malaga/ pewter
Frost/ pewter

Tryfan 60-70 (Female)	15377
Weight	1850g
Fabric	P450D Ripstop N420D HD Hypalon
Features:	
SA ² backsystem	
Hydration system compatible	
Side compression	
Base load straps	
Expansion side pockets	
2 lid pockets	
Base compartment	
Side zip main body access	
Lid bungee	
Ice axe and walking pole attachment points	
Wand pockets	
Raincover	



Lynx 40-50 15367

Weight 1900g

Fabric P450D Ripstop
N420D HD

Features:

- SA² backsystem
- Hydration system compatible
- Side compression straps
- Base load straps
- Rope strap
- Expansion side pockets
- 2 lid pockets
- Base compartment
- Side zip main body access
- Lid bungee
- Ice axe and walking pole attachment points
- Front and wand pockets
- Raincover



Colourways:

- *Black/ pewter
- Calliste green/ tank
- Ruby/ dark fire

Lynx 40-50 female 15368

Weight 1900g

Fabric P450D Ripstop
N420D HD

Features:

- Ladies SA² backsystem
- Hydration system compatible
- Side compression straps
- Base load straps
- Rope strap
- Expansion side pockets
- 2 lid pockets
- Base compartment
- Side zip main body access
- Lid bungee
- Ice axe and walking pole attachment points
- Front and wand pockets
- Raincover



Colourways:

- *Green slate/ indian teal
- frost/ pewter
- Malaga/ frost

Panther 55-65 15369

Weight 1800g

Fabric P450D Ripstop
P600D
Hypalon

Features:

- SA¹ backsystem
- Hydration system compatible
- Side compression straps
- Base load straps
- Expansion side pockets
- 1 lid pockets
- Base compartment
- Lid bungee
- Ice axe/walking pole attachment points
- Wand pockets
- Raincover



Colourways:

- * True blue/ pewter
- Dark fire/ pewter
- Black/pewter

Panther

Panther 55-65 female 15370

Weight 1800g

Fabric P600D
P450D Ripstop
Hypalon

Features:

- _____ Ladies SA' backsystem
- _____ Hydration system compatible
- _____ Side compression straps
- _____ Base load straps
- _____ Expansion side pockets
- _____ 1 lid pockets
- _____ Base compartment
- _____ Lid bungee
- _____ Ice ace/walking pole attachment points
- _____ Wand pockets
- _____ Raincover



Colourways:

- *Carmine/ Malaga
- Frost/ pewter
- Green slate/ indian teal

Panther 65 15371

Weight 1900g

Fabric P600D
P450D Ripstop
Hypalon

Features:

- _____ SA' backsystem
- _____ Hydration system compatible
- _____ Side compression straps
- _____ Base compression straps
- _____ Side pockets
- _____ 1 lid pocket
- _____ Base compartment
- _____ Lid bungee
- _____ Ice axe and walking pole attachment point
- _____ Wand pockets
- _____ Raincover



Colourways:

- *True blue/pewter
- Black/ pewter
- Tank/ pewter

Panther 65 female 15372

Weight 1900g

Fabric P600D
P450D Ripstop
Hypalon

Features:

- _____ Ladies SA' backsystem
- _____ Hydration system compatible
- _____ Side compression straps
- _____ Base compression strap
- _____ Side pockets
- _____ 1 lid pocket
- _____ Base compartment
- _____ Lid bungee
- _____ Ice axe and walking pole attachment point
- _____ Wand pockets
- _____ Raincover



Colourways:

- * Green slate/ indian teal
- Carmine/ Malaga
- Frost/ pewter



Colourways:

* True blue/ pewter
Tank/ pewter

Munro 65	15378
Weight	1700g
Fabric	P600D P450D Ripstop Hypalon
Features:	
SA ¹ backsystem	
Hydration system compatible	
Base compression straps	
Side pockets	
1 lid pocket	
Base compartment	
Front panel bungee cord	
Ice axe and walking pole attachment point	
Wand pockets	
Raincover	



Colourways:

*Green slate/ indian teal
Carmine/ malaga

Munro 65 (Female)	15379
Weight	1700g
Fabric	P600D P450D Ripstop Hypalon
Features:	
Ladies SA ¹ backsystem	
Hydration system compatible	
Base compression straps	
Side pockets	
1 lid pocket	
Base compartment	
Front panel bungee cord	
Ice axe and walking pole attachment point	
Wand pockets	
Raincover	



bobcat

Bobcat 55-65	15373
Weight	1500g
Fabric	P600D

Features:

- SA^o Backsystem
- Hydration system compatible
- Side compression straps
- Base compression straps
- Expansion side pockets
- 1 lid pocket
- Base compartment
- Lid bungee
- Ice ace/walking pole attachment points
- Wand pockets
- Webbing daisy chain



Colourways:
 *Dark fire/ pewter
 Black/ pewter
 Malaga/ frost

Bobcat 65	15374
Weight	1570g
Fabric	P600D

Features:

- SA^o backsystem
- Hydration system compatible
- Side compression straps
- Base compression straps
- Side pockets
- 1 Lid pocket
- Base compartment
- Lid bungee
- Ice axe and walking pole attachment point
- Wand Pockets
- Webbing daisy chain



Colourways:
 *Tank/ pewter
 Black/ pewter
 Malaga/ frost
 True blue/ pewter

Orkney 65	15380
Weight	1590g
Fabric	P600D

Features:

- SA^o backsystem
- Hydration system compatible
- Base compression straps
- Side pockets
- 1 lid pocket
- Base compartment
- Webbing daisy chain
- Ice axe and walking pole attachment point
- Wand pockets



Colourways:

- *Black/ pewter
- Green slate/ indian teal

wildcat

Wildcat 65	15375
Weight	1570g
Fabric	P600D Hypalon

Features:

- Wind Tunnel
- Hydration system compatible
- Side compression straps
- Base load straps
- Side pockets
- 1 Lid pocket
- Base compartment
- Front bungee
- Ice axe and walking pole attachment point
- Wand Pockets



Colourways:

- *True blue/ pewter
- Black/ pewter
- Green slate/ indian teal

airspace

The Karrimor airspace

back system minimises
contact between you and your pack.

Allowing air

to **circulate** both horizontally and
vertically, keeping your back

cooler

and more **comfortable**.

With a floating hip belt built around

bespoke,

lightweight aluminium
components the
airspace range

delivers

superb

carrying comfort

in a small

to medium

sized pack.



airspace

Airspace 40+5	15381
Weight	1450g
Fabric	N210D Stripe Ripstop Hypalon N420D



Features:
Airspace backsystem
Padded hipbelt
Hydration system compatible
Side compression & chest strap
Lid & expansion side pockets
Base access
Mesh wand pockets
Grab handle
Walking pole loop and retainer
Key clip
Raincover



Colourways:

- *Black/ black
- Classic green/ pewter
- Director blue/ pewter
- Ruby/ dark fire



Colourways:

- * Classic green/ pewter
- Black/ Black
- Director blue/ pewter
- Ruby/ dark fire



Airspace 35+5 15382

Weight 1350g

Fabric N210D Stripe Ripstop
Hypalon
N420D

Features:

- Airspace backsystem
- Padded hipbelt
- Hydration system compatible
- Side compression & chest strap
- Lid & expansion side pockets
- Zippered front pocket
- Mesh wand pockets
- Grab handle
- Walking pole loop and retainer
- Key clip



Colourways:

- * Director blue/ pewter
- Black/ Black
- Classic green/ pewter
- Ruby/ dark fire



Airspace 25+5 15383

Weight 1300g

Fabric N210D Stripe Ripstop
Hypalon
N420D

Features:

- Airspace backsystem
- Padded hipbelt
- Hydration system compatible
- Side compression & chest straps
- Lid pocket
- Mesh wand pockets
- Grab handle
- Chest strap
- Walking pole loop and retainer
- Key clip
- Raincover



Airspace 30 (Female) 15384

Weight 1300g

Fabric N210D Stripe Ripstop
Hypalon
N420D

Features:

Airspace backsystem

Padded hipbelt

Hydration system compatible

Lid and expansion side pockets

Side compression and chest straps

Walking pole loop and retainer

Key clip

Mesh Wand Pockets



Colourways:

- *Malaga/ frost
- Black/ frost
- Frost/ pewter
- True blue/ federal blue

Airspace 28 15385

Weight 1150g

Fabric N210D Stripe Ripstop
Hypalon
N420D

Features:

Airspace backsystem

Padded hipbelt

Hydration system compatible

Side compression and chest strap

Base access

Zippered front pocket

Mesh wand pockets

Grab handle

Walking pole loop and retainer

Key clip



Colourways:

- *Ruby/ dark fire
- Black/ black
- Classic green/ pewter
- Director blue/ pewter



Colourways:

- * Black/ black
- Classic green/ pewter
- Director blue/ pewter
- Ruby/ dark fire



12

Airspace 25	15386
Weight	1000g
Fabric	N210D Stripe Ripstop Hypalon N420D
Features:	
Airspace backsystem	
Padded hipbelt	
Hydration system compatible	
Side compression and chest strap	
Zipped front pocket	
Mesh wand pockets	
Grab handle	
Walking pole loop and retainer	
Key clip	



Colourways:

- *Classic green/ pewter
- Black/ black
- Director blue/ pewter
- Ruby/ dark fire



12

Airspace 20	15387
Weight	950g
Fabric	N210D Stripe Ripstop Hypalon N420D
Features:	
Airspace backsystem	
Padded hipbelt	
Hydration system compatible	
Zipped side pockets	
Bungee system	
Grab handle	
Chest strap	
Walking pole loop and retainer	
Key clip	



Colourways:

- *True blue/ federal blue
- Black/ frost
- Frost/ pewter
- Malaga/ frost



12

Airspace 20 (female)	15388
Weight	950g
Fabric	N210D Stripe Ripstop Hypalon N420D
Features:	
Airspace backsystem	
Padded hipbelt	
Hydration system compatible	
Bungee system	
Front pocket	
Expansion side pockets	
Grab handle	
Chest strap	
Mesh wand pockets	
Walking pole loop and retainer	
Key clip	

day trekking

For many years Karrimor have lead the way in **durable and functional**

day packs which meet a vast array of needs and end uses.

Karrimor combines all of

Karrimor's

experience to produce a range of daypacks which are

comfortable,

stylish

and

practical.





kodiak

Kodiak 40+5 15389

Weight 1300g

Fabric P300D Mini Ripstop N420D

Features:

- _____ Airmesh backsystem
- _____ Internal back system stave
- _____ Padded hipbelt
- _____ Hydration sleeve
- _____ Zipped lid pocket with key clip
- _____ Expansion side pockets with side compression
- _____ Front panel bungee system
- _____ Base compartment
- _____ Walking pole loop and retainer
- _____ Raincover
- _____ Chest strap



Colourways:
 *Burnt orange/ pewter
 Black/ pewter
 True blue/ federal blue

Kodiak 35+5 15390

Weight 840g

Fabric P300D Mini Ripstop N420D

Features:

- _____ Airmesh backsystem
- _____ Internal back system stave
- _____ Padded hipbelt
- _____ Hydration sleeve
- _____ Zipped lid pocket with key clip
- _____ Expansion side pockets
- _____ Side compression
- _____ Walking pole loop and retainer
- _____ Front panel bungee system
- _____ Raincover
- _____ Chest strap



Colourways:
 *Amethyst/ frost
 Black/ pewter
 Calliste green/ tank

Kodiak 25+5 15391

Weight 830g

Fabric P300D Mini Ripstop N420D

Features:

- _____ Airmesh backsystem
- _____ Padded hipbelt
- _____ Hydration sleeve
- _____ Zipped lid pocket with key clip
- _____ Expansion side pockets
- _____ Side compression
- _____ Walking pole loop and retainer
- _____ Raincover
- _____ Chest strap



Colourways:
 *Calliste green/ tank
 Black/ pewter
 Flame/ frost



Colourways:
 *Black/ pewter
 Burnt orange/ pewter
 Amethyst/ frost



12



Kodiak 30	15392
Weight	1050g
Fabric	P300D Mini Ripstop N420 HD
Features:	
Airmesh backsystem	
Padded hipbelt	
Hydration sleeve	
Side compression straps	
Zippered lid pocket with key clip	
Front pocket	
Lid bungee system	
Chest strap	
Walking pole loop and retainer	
Raincover	



Colourways:
 *Flame/ frost
 Black/ pewter
 Amethyst/ frost



12



Kodiak 25	15393
Weight	900g
Fabric	P300D Mini Ripstop N420 HD
Features:	
Airmesh backsystem	
Padded hipbelt	
Hydration sleeve	
Side compression straps	
Zippered lid pocket with key clip	
Front pocket	
Lid bungee system	
Chest strap	
Walking pole loop and retainer	
Raincover	



Colourways:
 *True blue/ federal blue
 Black/ pewter
 Flame/ frost



12



Kodiak 20	15394
Weight	700g
Fabric	P300D Mini Ripstop N420 HD
Features:	
Airmesh backsystem	
Removable waist belt	
Hydration sleeve	
Side compression straps	
Zippered lid pocket with key clip	
Chest strap	
Walking pole loop and retainer	
Raincover	



Zodiak 30 15395

Weight 700g

Fabric P300D Mini
Ripstop
N420D

Features:

Airmesh wind tunnel backsystem

Padded waist belt

Hydration system compatible

Front compartment & base access

Mesh wand pockets

Bungee system

Side compression & chest straps

Internal organiser

Grab handle

Walking pole loop and retainer

Key clip



Colourways:

- * Black/ black
- Calliste green/ tank
- Pewter/ frost
- Amethyst/ frost

Zodiak 25 15396

Weight 600g

Fabric P300D Mini
Ripstop
N420D

Features:

Airmesh wind tunnel backsystem

Waist belt

Hydration system compatible

Front compartment

Zippered front pocket

Mesh wand pockets

Side compression & chest straps

Internal organiser

Grab handle

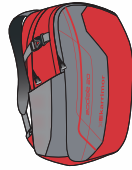
Walking pole loop and retainer

Key clip



Colourways:

- * Amethyst/ frost
- Black/ pewter
- Indian teal/ green slate
- Burnt orange/ pewter



Colourways:

- *Malaga/ carmine
- Black/ pewter
- Flame/ frost
- Calliste green/ tank



Zodiak 20 15397

Weight 500g

Fabric 300D Mini Ripstop N420D

Features:

Airmesh wind tunnel backsystem

Hydration system compatible

Front compartment

Mesh wand pockets

Side compression & chest straps

Daisy chain

Internal organiser

Grab handle

Key clip



Colourways:

- *Pewter/ frost
- Black/ black
- Burnt orange/ pewter
- Malaga/ carmine



Zodiak 15 15398

Weight 450g

Fabric P300D Mini Ripstop N420D

Features:

Airmesh wind tunnel backsystem

Zipped side pockets

Internal organiser

Grab handle

Key clip



Zodiak 10	15399
Weight	280g
Fabric	P300D Mini Ripstop N420D HD
Features:	
Airmesh wind tunnel backsystem	
Front pockets	
Internal organiser	
Grab handle	
Key clip	



Colourways:
 * Flame/ frost
 Indian teal/ green slate
 Black/ pewter
 Malaga/ carmine
 Amethyst/ frost

Zodiak 25 (08)	15400
Weight	550g
Fabric	P300D Mini Ripstop N420D HD
Features:	
Airmesh backsystem	
Removable waist belt	
Hydration system compatible	
Large front pocket	
Front stretch mesh pocket	
Internal organiser	
Grab handle	
Front shock cord carrying system	
Sliding chest strap	
Walking pole attachment points	
Key clip	



Colourways:
 * Pewter/ carmine
 Black/ pewter
 Pewter/ frost

Spectre 20 15401

Weight 450g

Fabric P300D Mini Ripstop
N420D HD

Features:

Airmesh backsystem

Hydration system compatible

Large front pocket

Mesh wand pockets

Internal organiser

Grab handle

Front shock cord carrying system

Key clip



Colourways:

- *True blue/ pewter
- Flame/ frost
- Black/ pewter



Spectre 10 15402

Weight 350g

Fabric P300D Mini Ripstop
N420D HD

Features:

Airmesh backsystem

Hydration system compatible

Large front pocket

Mesh wand pockets

Internal organiser

Grab handle

Front shock cord carrying system

Key clip



Colourways:

- *Carmine/ frost
- Black/ pewter
- Indian teal/ green slate



travel

Karrimor

travels

understand the last thing you want to worry about on your

travels is your bags and belongings.

Karrimor's travel bags combine

security,
functionality
and **stylish design.**

The Global range incorporates

traditional
wheeled duffels,
wheeled
convertible
travel bags

with our size adjustable back system,

traditional
convertible travel bags
and duffels;

there's a bag
in the Karrimor travel range

suitable

for
every
trip.





Global Hub 65+15 15407

Weight 3900g

Fabric P450D Mini Ripstop
P600D
P1680D Ballistic

Features:

- Zip away SA backsystem
- Rugged wheel system
- Removable daypack
- Front daypack attachment wings
- Front security strap
- Book style main opening
- Base compartment
- Zipped front pocket
- Pull handle
- Lockable zips
- Large internal zipped mesh pocket
- 2 internal security
- Side, base & internal compression straps
- Removable shoulder strap
- Airmesh padded grab handles



Colourways:

- *Black/ pewter
- True blue/ pewter

Global Hub 65+15 female 15408

Weight 3900g

Fabric P450D Mini Ripstop
P600D
P1680D Ballistic

Features:

- Zip away Ladies SA backsystem
- Rugged wheel system
- Removable daypack
- Front daypack attachment wings
- Front security strap
- Book style main opening
- Base compartment
- Zipped front pocket
- Pull handle
- Lockable zips
- Large internal zipped mesh pocket
- 2 internal security
- Side, base & internal compression straps
- Removable shoulder strap
- Airmesh padded grab handles



Colourways:

- *Malaga/ pewter
- Pewter/ frost



Colourways:

*True blue/ pewter
Black/ pewter

Global 70-90 15409

Weight 3200g

Fabric N420D Dynatec
P600D
P1680D Ballistic

Features:

Zip away SA² backsystem

Zipped expansion

Removable daypack

Front daypack attachment wings

Front security strap

Book style main opening

Base compartment

Zipped front pocket

Lockable zips

Large internal zipped mesh pocket

2 internal security

Side, base & internal compression straps

Removable shoulder strap

Airmesh padded grab handles



Colourways:

*Pewter/ frost
Malaga/ pewter



Global 50-70 female 15410

Weight 3100g

Fabric N420D Dynatec
P600D
P1680D Ballistic

Features:

Zip away Ladies SA² backsystem

Zipped expansion

Removable daypack

Front daypack attachment wings

Front security strap

Book style main opening

Base compartment

Zipped front pocket

Lockable zips

Large internal zipped mesh pocket

2 internal security

Side, base & internal compression straps

Removable shoulder strap

Airmesh padded grab handles



Global Tropic	15411
Weight	2600g
Fabric	450D PES Mini Ripstop 600D PES

Features:

- Zip away SA backsystem
- Removable daypack
- Base compartment
- Front security strap
- Book style main opening
- Lockable zips
- Large internal zipped mesh pocket
- Internal security pocket
- Side, base & internal compression straps
- Removable shoulder strap
- Airmesh padded grab handles



Colourways:
* Pewter/ frost
Black/ pewter

Global Venture	15412
Weight	2400g
Fabric	450D PES Mini Ripstop 600D PES

Features:

- Zip away backsystem
- Removable daypack
- Book style main opening
- Lockable zips
- Internal security pocket
- Side compression straps
- Base compression straps
- Internal compression straps
- Removable shoulder strap



Colourways:
* Black/ pewter
Pewter/ frost

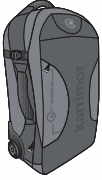
Global Equator 70	15413
Weight	2950g
Fabric	P450D Mini Ripstop P600D P1680D Ballistic

Features:

- Rugged wheel system
- Lockable zips
- Large internal zipped mesh pocket
- Internal security pocket
- Side compression straps
- Internal compression straps
- Internal mesh pocket
- Airmesh padded grab handle
- Rigid base



Colourways:
* Black/ pewter
Malaga/ pewter
Pewter/ frost



Colourways:

*Malaga/ pewter
Black/ pewter
Pewter/ frost



Global Equator 40	15414
Weight	2550g
Fabric	P450D Mini Ripstop P600D P1680D Ballistic

Features:	
Rugged wheel system	
Lockable zips	
Large internal zipped mesh pocket	
Internal security pocket	
Side compression straps	
Internal compression straps	
Internal mesh pocket	
Airmesh padded grab handle	
Rigid base	



Colourways:

*Pewter/ frost
Black/ pewter



Global Meridian 90	15415
Weight	2250g
Fabric	P450D Mini Ripstop P600D P1680D Ballistic

Features:	
Wheeled chassis system	
Lockable zips	
Internal mesh pocket	
Airmesh padded grab handles	
Book style main opening	
Carry handle	
Lash points	
Side compression straps	
Zipped end pocket	



Global Meridian 40	15416
Weight	600g
Fabric	P450D Mini Ripstop P600D

Features:	
Removable shoulder harness	
Lockable zips	
Internal mesh pocket	
Airmesh padded grab handles	
Book style main opening	
Carry handle	
Lash points	
2 zipped ends pockets	



Colourways:

*Black pewter
Malaga/ pewter
Pewter/ frost



urban

Karrimor's urban range

has a **unique** and **striking appearance**, using hard wearing yet **stylish** fabrics to provide **function and fashion** in a bag for the **everyday** urban lifestyle.

Loaded with **features**

for the **busy life** the Urban range offers **practicality** and **versatility**, taking anything

urban life

has to
throw at it.





urban

Indie 30 15403

Weight 800g

Fabric P900D Two Tone

Features:

Moulded back system

Zipped main compartment

Zipped front compartment

Zipped front pocket

Organiser panel

Side compression

Mesh bottle pocket

Integral grab handle

Security pocket with key clip

Removable waist strap

Structured, padded laptop sleeve

External zipped pocket

12



Colourways:

- *Black
- Dusk
- MoCCA
- Ruby

Indie 25 15404

Weight 700g

Fabric P900D Two Tone

Features:

Moulded back system

Zipped main compartment

Zipped front compartment

Expansion front pocket

Organiser panel

Front compression

Side compression

Mesh bottle pocket

Integral grab handle

Security pocket with key clip

Removable waist strap

Hydration system compatible

12



Colourways:

- *Dusk
- Black
- MoCCA
- Ruby



Colourways

- *Mocca
- Black
- Dusk
- Ruby



Indie 20 15405

Weight 600g

Fabric P900D Two Tone

Features:

Moulded back system

Zipped main compartment

Zipped front pocket

Organiser panel

Front compression

Mesh bottle pocket

Integral grab handle

Security pocket with key clip

Removable waist strap

Hydration system compatible



Colourways

- *Ruby
- Black
- Dusk
- Mocca



Indie 18 15406

Weight 990g

Fabric P900D Two Tone

Features:

Moulded back system

Zipped front pocket

Organiser panel

Integral grab handle

Security pocket with key clip

Structured, padded laptop sleeve

Shoulder strap with cam lock

Luggage handle compatible



Fabrics



P1680D Ballistic



P900D Two tone



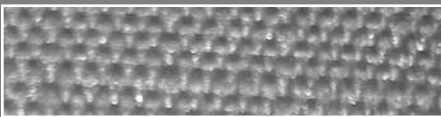
N420D Dynatec



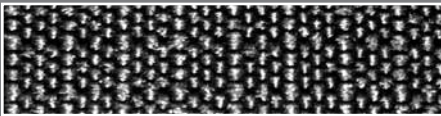
N420D HD



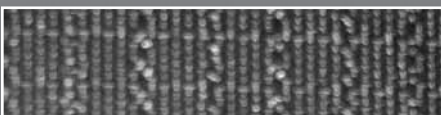
P600D



P450D Ripstop



P300D Mini Ripstop



N210D Stripe Ripstop

KARRIMOR LIMITED
UNIT A
BROOK PARK EAST
SHIREBROOK
NOTTINGHAMSHIRE
NG20 8RY
UK



12: Standard Guarantee

This product is conditionally guaranteed against defects in materials and workmanship for a period of 12 months from the date of purchase. For further information see the product swing ticket or www.karrimor.com



36: Extended Guarantee

This product is conditionally guaranteed against defects in materials and workmanship for a period of 36 months from the date of purchase. For further information see the product swing ticket or www.karrimor.com

LICENSEES & DISTRIBUTORS

- AUSTRIA**
ANLO MOUNTAIN GMBH
LOFERERSTRABE 19
A5760 SAALFELDEN
AUSTRIA
- BELGIUM**
ALPINISME & RANDONNEE-LECOMTE
RUE DE VERGNIES, 27
1050 BRUXELLES
BELGIQUE
BELGIUM
- BRUNEI**
GL EXTRA ENTERPRISE
NO 13, FIRST FLOOR, BLOCK A
BGN HAJI ABDUL RAHMAN
KG. KIULAP,BSB
BRUNEI
BE1518
- CHILE**
PAZGO
AVENIDA RAUL LABBE DEP 105
LO BARNECHA
SANTIAGO
CHILE
GONZALO
- CHINA**
JAMOST SPORTING GOODS (SHENZHEN) LTD
ROOM D, 30/FLOOR, NOBLE CENTER NO 1006
3RD FUZHONG ROD, FUTIAN DISTRICT
SHENZHEN 518026
CHINA
- CZECH REPUBLIC**
VERTICAL SPORT
RENATA SILHANOVA
V ALEJI 42
JABLONEC NAD NISOU
CZECH REPUBLIC
- DUBAI**
RETAILCORP
P8 CHINA COURT
IBN BATTUTA MALL
PO BOX 262005
DUBAI
- FRANCE**
TOP ROCK SARL
RN 532 Å NO 11
26300 PIZANCON
FRANCE
- HONG KONG**
HONG KONG MOUNTAINEERING TC
1F ON YIP BUILDING
395 SHANGHAI STREET
KOWLOON
HONG KONG
- ICELAND**
ISLENSKU ALPARNIR
PROSPORT EHF
FAXAFENI 8
108 REYKJAVIK
- IRAN**
PANIZ SPORT
PO BOX 11136-14857
NO. 27 OLYMPIC PASSAGE
ACROSS EMAM KHOMAINI
VALLAR SR
TEHRAN
IRAN
- ISRAEL**
GOLDMAN EXCLUSIVE IMPORTS LTD
REDBACK STORE BY GOLDMAN
KIBUTS YIFAT
30069
ISRAEL
- JAPAN**
SBA INC
KUDAN KAWASHIMA BLDG 14
KUDAN KITA, 1 CHOME CHIYODA KU
TOKYO 102 0073
JAPAN
- KOREA**
DONGJIN LEISURE CO. LTD
3F STAR VALLEY,
60-11 GASON-DONG,
GEUM CHEON-GU, SEOUL,
KOREA
153-801
- MALAYSIA**
DLP LEISURE SDN BHD,
LOT 558-B JALAN SUBANG 3,
OFF PERSIARAN SUBANG,
SUNGEI PENAGA INDUSTRIAL PARK,
47610 SUBANG JAYA,
SELANGOR
MALAYSIA
- NEW ZEALAND**
KIWI CAMPING COMPANY LTD
P.O BOX 20137
TE RAPA
HAMILTON 3241
NEW ZEALAND
- NORWAY**
STRANDCO
VERPETVN. 19
N-1540 VESTBY
NORWAY
- PHILIPPINES**
ASIATRADERS CORPORATION
NO 15 VICTONETA AVENUE
ARANETA UNIVERSITY VILLAGE
MALABON CITY, 1470
PHILIPPINES
- POLAND**
PAKER SP Z.O.O
UL. MICKIEWICZA 18/16
01-517 WARSZAWA
POLAND
- POLAND**
PODROZE SPECJALISTYCZNE
PRZEMYSŁAW CHLEBICKI
UL. GROJECKA 46/50
02-320 WARSAW
POLAND
- RUSSIA**
PERFORMANCE SPORT
129110 OLIMPIYSKY PROSPECT
39494
MOSCOW
RUSSIA
- SLOVENIA**
K + K TRADE D.O.O.ZIRI
DOBRAČEVSKA ULICA 69
4226 ZIRI
SLOVENIA
- SOUTH AFRICA**
SUPER-BRANDS PTY LTD.
22 MOBILE ROAD PO BOX 334
AIRPORT INDUSTRIA CAPE TOWN
7490, SOUTH AFRICA
- SPAIN**
NORLAN
SANTIAGO BERNABEU, 6, ESC
1, 8. PUERTA 1
28036 MADRID
SPAIN
- TAIWAN**
OUTDOOR PLUS INTERNATIONAL CO
TING SAN IOU
1F NO22,SEC 1,CHUNG SHAN N RD
TAIPEI
TAIWAN
- THAILAND**
DLP (THAILAND) CO LTD.
SILA BUILDING,
3RD FLOOR,
6 PRADITMANUTHAM ROAD
THARANG,BANGKHEN,
BANGKOK 10230
- TURKEY**
VADI DOGA SPORLAN
VADI DOGA SPORLARI TURIZIM.INSAAT TEKSIL
SAN VE TIC.LTD.STI KARAKOY MEYDANI ALSU IS HANI
NO:4/2-3 ZEMIN KAT KARAKOY/BEY
ISTANBUL
TURKEY
- UK**
ALLCORD LTD
ILFORD ROAD,
NEWCASTLE UPON TYNE,
TYNE AND WEAR
NE2 3NX

