

Kinetic, Equilibrium, and Thermodynamic Studies of the Biosorption of Pb(II) from solution by *Calymperes erosum*.

N.A. Adesola Babarinde, Ph.D.^{1*}, J. Oyebamiji Babalola, Ph.D.²,
and Adenike C. Onabanjo, B.Sc.¹

¹Department of Chemical Sciences, Olabisi Onabanjo University, Ago-Iwoye, Nigeria.

²Department of Chemistry, University of Ibadan, Ibadan, Nigeria.

*Present address: Department of Chemical Sciences, Redeemer's University, Redemption City, Nigeria.

E-mail: solababarinde@yahoo.com
babarindea@run.edu.ng

ABSTRACT

In this study, the batch removal of Pb(II) from dilute aqueous solution using *Calymperes erosum* as the biosorbent has been investigated. The Pb(II) uptake was dependent on the initial pH, contact time, initial metal ion concentration and temperature. The residual Pb(II) in the solution was determined using Atomic Absorption Spectrophotometer (AAS). The optimum pH range for the biosorption was pH 4. Maximum biosorption was obtained after 75 min of the process. Kinetic study showed that the pseudo-second-order rate equation described the biosorption process better than the pseudo-first-order kinetics. The adsorption isotherms obtained fitted well into the Freundlich and Langmuir isotherm. The Freundlich equation obtained was $\log \Gamma = 0.8348 \log C_e + 1.0629$ while the Langmuir equation obtained was $1/\Gamma = 0.0881/C_e + 0.0047$. The correlation factors obtained were 0.9987 and 0.9923, respectively. The standard deviation values are 0.102 and 0.001, respectively. The free energy change obtained for the biosorption of Pb(II) at 300K, initial Pb(II) concentration of 100mgL^{-1} and pH 4 was $-5.4775 \text{ kJmol}^{-1}$. The thermodynamic study showed that the increase in temperature led to decrease in the amount of the metal ion biosorbed. These results indicate that *Calymperes erosum* has potential for the uptake of Cd(II) from industrial effluents.

(Keywords: *Calymperes erosum*, lead(II), biosorption, equilibrium, thermodynamics)

INTRODUCTION

Toxic heavy metal contamination has been described as a worldwide environmental problem

(Seker et al., 2008). Biosorption of heavy metals from solution has gained much attention in the recent years due to its merit of being a safe and cost effective process. It has therefore, been found to be a better and an alternative 'technology' for treatment of effluents containing these metals. The mechanism of the biosorption process has been reported to be very complex and it may involve the combination of diffusion, adsorption, chelation, complexation, co-ordination, or micro-precipitation mechanisms depending on the specific biosorbent (Veglio and Beolchini, 1997). Therefore, biosorption can be affected by many chemical and physical variables such as pH, ionic strength, biomass dosage and presence of other metal ions. All these factors must be investigated in order to have a better understanding of the phenomenon.

Lead was chosen for this biosorption studies due to its wide use in industry and potential pollution impact. It is extensively used in many industrial applications, such as storage battery manufacturing, printing pigments, fuels, photographic materials, and explosive manufacturing (King et al., 2007). Lead has been known for its toxicity for a long time as one of the most toxic heavy metals, which may cause health problems such as behavioral anomaly, learning disabilities and seizures (Bulut and Baysal, 2006). Different biological materials have been used for the biosorption of lead(II) from aqueous solutions (Kilic et al., 2006, Green-Ruiz et al., 2008, Panda et al., 2008, Pandey et al., 2008, Romera et al., 2008, Ziagova et al., 2007). These include algae (Seker et al., 2008; Hawani et al., 2007; Sari et al., 2007; Vilar et al., 2008; Apiratikul and Pavasant, 2008; Uluozlu et al., 2008; Romera et al., 2007) seaweed (Tsui et al,

2006), passion-fruit shell (Jacques et al., 2007), rice husk (Krishmani, 2008), bacteria (Burnett, et al., 2007), pectin-rich fruit (Schiewer and Patil, 2008), and maize leaf (Babarinde, et al., 2008a). The use of bacteria, algae and fungi or their separated components as biosorbents has been reported widely. In this study, we evaluated the biosorption capacity of the dried moss, *Calymperes erosum*, which is a nonvascular green plant that produces spores instead of seed for removal of Pb(II) from aqueous solution.

MATERIALS AND METHODS

The plant (*Calymperes erosum*) used as the biosorbent was obtained on a palm tree trunk in dry form from a farm settlement in Apoje, Ogun State, Nigeria. It was kept in a dry place until the time of usage.

Preparation of metal solution

The lead salt used for this study was analytical grade of $\text{Pb}(\text{NO}_3)_2$. Stock solution of 1000 mgL^{-1} of Pb^{2+} was prepared from the salt. The initial pH of each solution was adjusted to the desired pH by drop wise addition of 0.1M HNO_3 and/or 0.1M NaOH solution. Fresh dilution of the stock solution was done for each biosorption study.

Biosorption Studies

The methods used for the biosorption studies are similar to those earlier reported (Babarinde et al., 2008b). Each of the batch biosorption studies was carried out by contacting 0.2g of the *Calymperes erosum* with 25ml of 100mgL^{-1} Pb(II) solution in a glass tube.

The pH of each of the solutions had been adjusted to the desired value with concentrated HNO_3 and/or concentration NaOH . Each tube was placed in a thermostated water bath and agitated at 27°C . The studies were conducted at pH values of 1-7. The glass tubes containing the mixture were maintained in the water bath for 24h. The biomass was removed from the solution after centrifuging. The residual Pb(II) concentration in the solution was analyzed using AAS. Each of the studies was conducted in triplicates and the mean value was determined. Subsequent biosorption studies were performed at pH 4.

Effect of pH on biosorption

The effect of pH on the biosorption of Pb(II) was carried out within the range that would not be influenced by the metal precipitated (Mashitah et al., 2008). It has been reported that the suitable pH ranges for the sorption of different metal ions were slightly different. Consequently, the suitable pH range for Pb(II) was found to be pH 1-7.5. The present study was conducted within pH 1-7. The study on the effect of initial solution pH on the biosorption of Pb(II) was carried out by contacting 0.2g of the *Calymperes erosum* with 25ml of 100mgL^{-1} Pb(II) solution in a glass tube. The glass tubes containing the mixture were left in the water bath for 24h. The biomass was removed from the solution after centrifuging. The residual Pb(II) concentration in the solution was analyzed. Subsequent biosorption experiments were performed at pH 4.

Effect of contact time on biosorption

The biosorption of Pb(II) by *Calymperes erosum* plant was studied at various time intervals (5-300 min). A constant concentration of 100 mgL^{-1} was used. 0.2g of *Calymperes erosum* (biomass) was weighed into each glass tube and 25ml of Pb(II) solution at pH 4 was introduced into it.

Effect of initial Pb(II) concentration on biosorption

Batch biosorption study was carried out using a concentration range of $10 - 100 \text{ mg L}^{-1}$. 0.2g of the *Calymperes erosum* was introduced into each of the glass tube employed and 25ml of Pb(II) solution at pH 4 was added to the tubes. The biosorption mixture was then maintained in a thermostated water bath in order to maintain the temperature at 27°C for optimum contact time required to reach equilibrium time. The biosorbent was removed from the solution and the concentration of residual Pb(II) ion in each solution was determined.

Effect of temperature on biosorption

The biosorption of Pb(II) by *Calymperes erosum* was studied at temperatures between 21°C and 37°C with a constant concentration of 100 mgL^{-1} of the Pb(II) solution used. 0.2g of the *Calymperes erosum* was introduced into each of

the glass tubes employed and 25ml of Pb(II) solution at pH 4 was added to the tubes. The biosorption mixture was then left in a thermostated water bath to maintain the temperature for optimum time. The biosorbent was removed from the solution by centrifuging and the concentration of residual Pb(II) ion in each solution was determined.

Statistical analysis

The curve fittings of all the data obtained were performed using Microcal Origin 6.0® software.

RESULTS AND DISCUSSION

Effect of pH on biosorption

Preliminary study on the effect of pH was carried out to determine the optimum pH for maximum lead(II) uptake by the biosorbent before investigating the kinetic, equilibrium and thermodynamic studies on the biosorption. The optimum pH has been reported to be closely related to the chemical speciation of metal ion, speciation of the functional groups on the biosorbent, and the nature of interaction of the metal ion with the biosorbent functional groups (Seker et al., 2008). The optimum pH is different for each type of metal ion and biosorbent for efficient biosorption (Veglio and Beolchini, 1997). The pH of the solution significantly affects the cell wall of the biosorbent as well as the solution chemistry.

The biosorption of metal ion (represented as M^{2+} for a divalent metal ion) from the liquid phase to the solid phase, the biosorbent with lone pair of electron (represented as \ddot{A}), can be considered as a reversible reaction with an equilibrium being made between the two phases as schematically shown below:



The pH of the solution therefore controls the biosorption process. A decrease in pH to the acidic range makes the biosorbent to be highly protonated hence the amount of the metal ions biosorbed is reduced. This is because the metal ions are prevented from binding to the functional groups on the biosorbent. On the other hand, increase in pH to the basic range enhances the

biosorption process by the lone pair of electrons. In other words, the net charge on the biosorbent is determined by the pH and this will determine the amount of metal ions biosorbed.

The result of this study is presented in Figure 1 where optimum pH is pH 4. The amount of the metal ions biosorbed was lower at other pH values but much lower at pH 1 due to high protonation of the cell wall of the biosorbent and the competition between hydrogen ion and lead ions for the same binding sites in the biosorbent at that pH value.

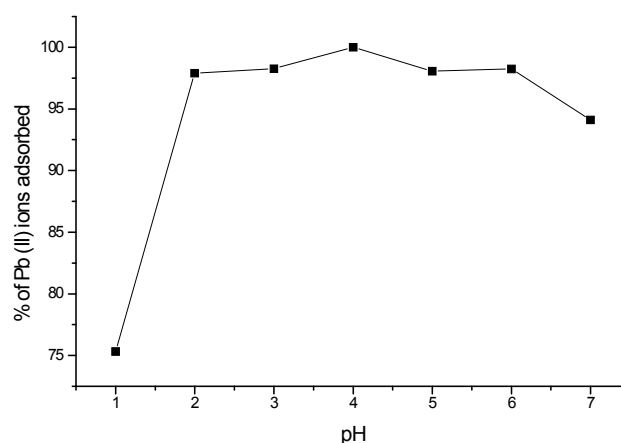


Figure 1: Effect of pH on the biosorption of Pb(II) using *Calymperes erosum*.

Kinetics of the biosorption

The effect of contact time on the biosorption of is shown in Figure 2. This shows that optimum biosorption was obtained within 75 of the biosorption process. The pseudo-first-order, pseudo-second-order and the intra-particle diffusion rate equations were applied to the kinetic study as shown below in the following equations:

$$\log(q_e - q_t) = \log q_e - \frac{k_1}{2.303} t \quad (2)$$

$$\frac{t}{q_t} = \frac{1}{k_2 q_e^2} + \frac{1}{q_e} t \quad (3)$$

$$\log R = b \log t + \log K_s \quad (4)$$

where k_1 is the Lagergren rate constant of the biosorption (min^{-1}); k_2 is the pseudo-second-order rate constant ($\text{g mg}^{-1} \text{min}^{-1}$); q_e and q_t are the amounts of metal ions biosorbed (mg g^{-1}) at equilibrium and at time t , respectively. R is the percent metal biosorbed, t is the contact time of the biomass with the metal ions (min), b is the gradient of linear plots and K_s is the intra-particle diffusion constant.

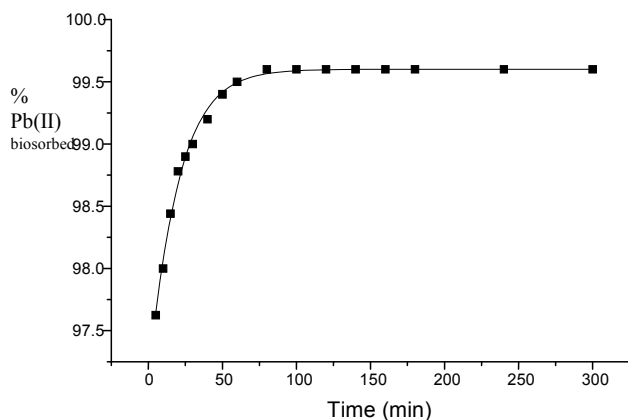


Figure 2: Time Course of the Biosorption of Pb(II) by *Calyptres erosum* at 27°C and pH 4.

The pseudo-second-order plot gave a better result than the pseudo-first-order plot. However, the biosorption does not support the intra-particle diffusion equation. The pseudo-second-order model is considered to be the best correlation for this biosorption process. Figures 3 and 4 show the results of the pseudo-first-order and pseudo-second-order correlations, respectively. These plots were constructed using the model parameters obtained from the linear regression analyses. The linear regression plots of $\log(q_e - q_t)$ versus t for the biosorption of Pb(II) ions on the biomass at initial concentration of 100 mgL^{-1} obey the pseudo-first-order reversible kinetics as shown in Figure 3. The overall rate constant of the biosorption (k_1) was calculated from the slope of the plot. The linear regression of t/q_t against t gave the rate constant, k_2 , which are given in Table 1, together with q_e and the linear correlation coefficients, R .

Isotherm models of the biosorption

The isotherm models are mathematical models describing the distribution of metal ions between the solid and liquid phases that are in contact. The

Freundlich and Langmuir isotherms are the most commonly used (Kilic et al., 2008; Sari et al., 2007; Uluozlu et al., 2008; Bueno et al., 2008; Demirbas, 2008).

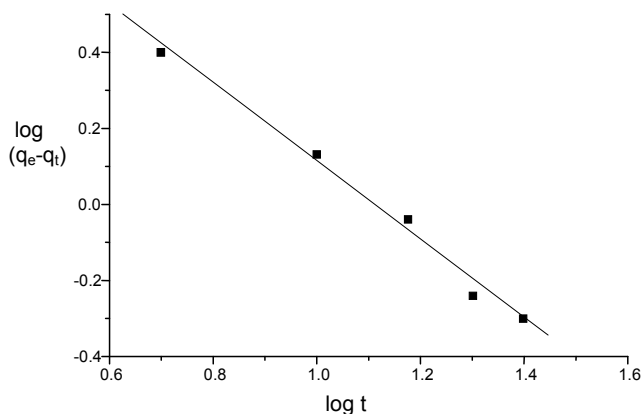


Figure 3: Pseudo-First-Order Plot for the Biosorption of Pb(II) by *Calyptres erosum* at 27°C and pH 4.

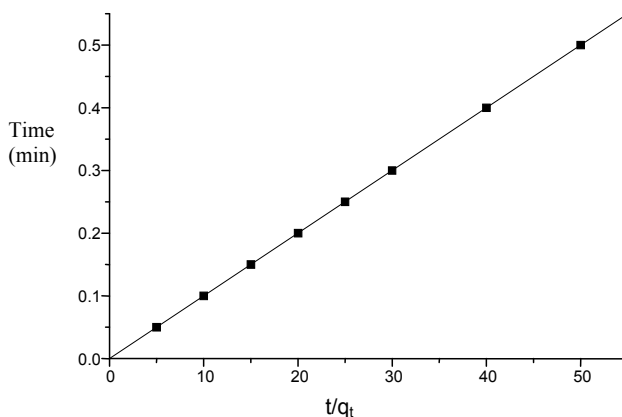


Figure 4: Pseudo-Second-Order Plot for the Biosorption of Pb(II) by *Calyptres erosum* at 27°C and pH 4.

Table 1: Freundlich and Langmuir Isothermal Parameters for the Biosorption of Pb(II) by *Calyptres erosum* at pH 4 and initial Pb(II) concentration of 100 mgL^{-1} .

Freundlich Parameters			
N	K_f	R	S.D
1.1979	11.5585	0.9987	0.102
Langmuir Parameters			
b_m	Γ_m	R	S.D
11.3507	212.77	0.9846	0.001

The Freundlich model can be applied for non-ideal sorption on heterogeneous surfaces and multiplayer sorption. The Freundlich model (Freundlich, 1906) is:

$$\log \Gamma = \frac{1}{n} \log C_e + \log K_f \quad (5)$$

where K_f is a constant relating the biosorption capacity and $\frac{1}{n}$ is an empirical parameter relating the biosorption intensity, which varies with the heterogeneity of the biomass.

The isotherm is presented in Figure 5. Linear regression of the model gave the Freundlich equation as $\log \Gamma = 0.8348 \log C_e + 1.0629$ with correlation coefficient (R^2) of 0.9987. The R^2 value indicated that the biosorption of Pb(II) on *Calymperes erosum* fitted well the Freundlich model.

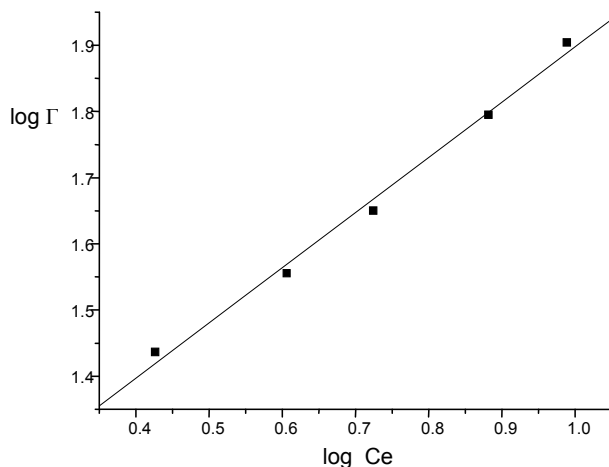


Figure 5: Freundlich Isotherm for the Biosorption of Pb(II) from Aqueous Solution using *Calyperes erosum* at 27°C and pH 4.

The Langmuir model (Langmuir, 1918) assumes that biosorption occurs at specific homogenous sites on the biosorbent and is used successfully in many monolayer biosorption processes. The model in its linear form is written as:

$$\frac{1}{\Gamma} = \frac{1}{b_m} \frac{1}{C_e} + \frac{1}{\Gamma_m} \quad (6)$$

where Γ and C_e are the equilibrium metal ion concentrations on the biosorbent (mgg^{-1}) and in the solution (mg^{-1}), b_m the monolayer biosorption capacity of the biosorbent (mgg^{-1}) and Γ is the Langmuir biosorption constant (Lmg^{-1}) relating the free energy of biosorption, respectively. The isotherm is presented in Figure 6. Linear regression of the isotherm gives the Langmuir equation as $1/\Gamma = 0.0881/C_e + 0.0047$ with correlation coefficient (R^2) of 0.9846. The values of the correlation coefficients for the two isotherms show that the Freundlich model better represents the biosorption process. The values of the parameters for the two models are presented in Table 1.

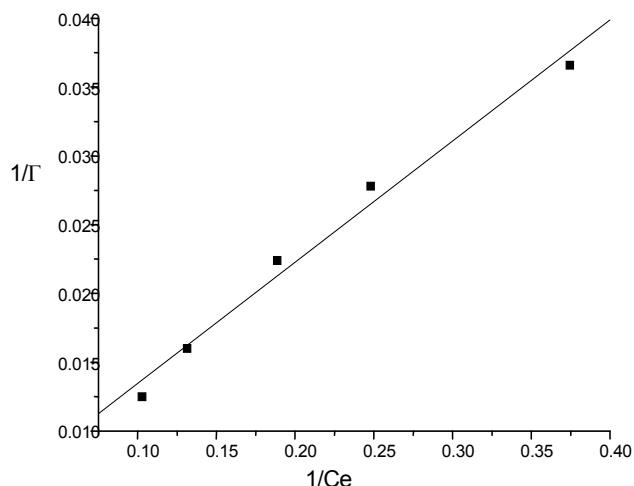


Figure 6: Langmuir Isotherm for the Adsorption of Lead (II) Ions from Aqueous Solution using *Calymperes erosum* at 27°C and pH 4.

The same data was employed in the calculation of biosorption efficiency given as:

$$E = 100 \left(\frac{C_i - C_e}{C_i} \right) \quad (7)$$

where C_i and C_e are the concentrations of the metal ions at initial and equilibrium times, respectively.

The efficiency plot is presented in Figure 7. The result shows that the efficiency of the biosorbent decreases with increase in the initial concentration of the metal ion. This was due to the fixed number of binding sites on the

biosorbent. The increase in the initial concentration only led to increase in the amount of the metal ions left in solution.

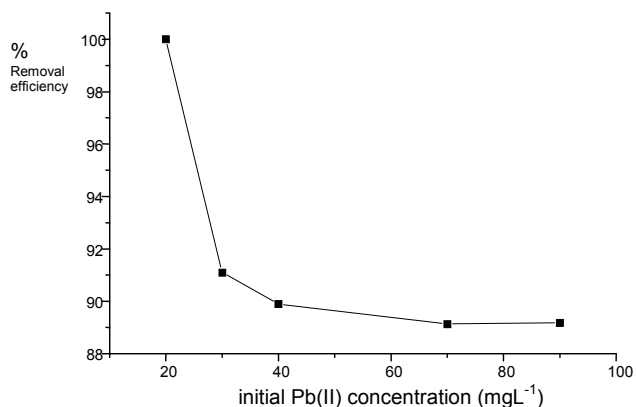


Figure 7: Removal Efficiency of Pb(II) by *Calymperes erosum* at 27°C and pH 4.

Thermodynamics of the biosorption

In order to describe the thermodynamics of the biosorption of Pb(II) by *Calymperes erosum* from aqueous solution, thermodynamic parameters such as the change in free energy (ΔG°), enthalpy (ΔH°) and entropy (ΔS°) were calculated from equations 8-12.

$$\Delta G^\circ = -RT \ln K_c \quad (8)$$

where ΔG° is the standard Gibbs free energy change for the biosorption (Jmol^{-1}), R is the universal gas constant ($8.314 \text{ Jmol}^{-1}\text{K}^{-1}$) and T the temperature (K).

The distribution ratio, K_c , is defined as:

$$K_c = \frac{C_{ad}}{C_e} \quad (9)$$

K_c reflects the extent of distribution of the Pb(II) ions between the biomass (mg g^{-1}) and liquid (mg l^{-1}) phases at equilibrium.

The free energy change obtained for the biosorption of Pb(II) at 300K, initial Pb(II) concentration of 100 mgL^{-1} and pH 4 was $-5.4775 \text{ kJmol}^{-1}$. The thermodynamic study showed that the increase in temperature led to decrease in the amount of the metal ion biosorbed.

The entropy and enthalpy parameters were estimated from the following equations:

$$\ln K_c = \frac{\Delta S^\circ}{R} - \frac{\Delta H^\circ}{RT} \quad (10)$$

$$\Delta G^\circ = -\Delta S^\circ(T) + \Delta H^\circ \quad (11)$$

$$\Delta S^\circ = \frac{\Delta H^\circ - \Delta G^\circ}{T} \quad (12)$$

The plot of ΔG° against T shown in Figure 8 gives a linear fit with slope of $-\Delta S^\circ$ and intercept of ΔH° . The entropy and enthalpy values obtained from the plot are $-44.468 \text{ Jmol}^{-1}\text{K}^{-1}$ and $-18.244 \text{ kJmol}^{-1}$, respectively. The decrease in ΔG° values with increase in temperature shows a decrease in feasibility of biosorption at higher temperatures. The negative ΔS° value suggests a decrease in the randomness at the solid/liquid interface during the biosorption of Pb(II) ions onto *Calymperes erosum*. The negative ΔH° value indicates the endothermic nature of the biosorption process within the temperature range of our study.

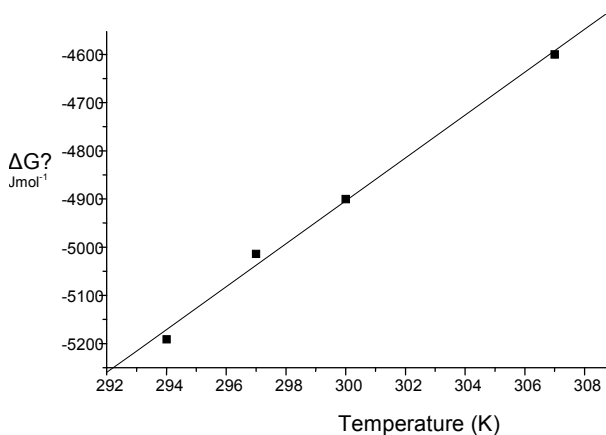


Figure 8: Thermodynamics Plot for the Biosorption of Pb(II) on *Calymperes erosum*.

CONCLUSIONS

In this study, the ability of *Calymperes erosum* to bind Pb(II) ions from aqueous solutions was investigated. The biosorption process has been shown to be affected by pH, contact time, initial metal ion concentration and temperature. The optimum pH range for the biosorption was pH 4. Optimum biosorption was obtained after 75 min.

of the process. Kinetic study showed that the pseudo-second-order rate equation described the biosorption process better than the pseudo-first-order kinetics. The adsorption isotherms obtained fitted well into the Freundlich and Langmuir isotherm. Increase in temperature led to increase in the biosorption of Pb(II) indicating an endothermic process.

ACKNOWLEDGEMENTS

The authors are grateful for the technical assistance rendered by the technologists in their Departments.

REFERENCES

1. Apiratikul, R. and Pavasant, P. 2008. "Batch and Column Studies of Biosorption of Heavy Metals by *Caulerpa lentillifera*". *Bioresource Technology*. 99: 2766-2777.
2. Babarinde, N.A.A, Babalola, J.O., and Sanni, R.A. 2006. "Biosorption of Pb(II) from Aqueous Solution by Maize Leaf". *International Journal of Physical Sciences*. 1(1):23-26.
3. Babarinde, N.A.A., Babalola, J.O., and Adebisi, O.B. 2008b. "Isotherm and Thermodynamic Studies of the Biosorption of Zinc (II) from Solution by Maize Leaf". *Pacific Journal of Science and Technology*. 9(1):196-202.
4. Bueno, B.Y.M., M.L. Torem, F. Molina, and L.M.S. de Mesquita. 2008. "Biosorption of Lead (II), Chromium (III) and Copper(II) by *R. opacus*: Equilibrium and Kinetic Studies". *Mineral Engineering*. 21:65-75.
5. Bulut, Y. and Baysal, Z. 2006. "Removal of Pb(II) from Wastewater using Wheat Bran". *Journal of Environmental Management*. 78:107 –113.
6. Burnett, P.G., Handley, K., Peak, D., and Daughney, C.J. 2007. "Divalent Metal Adsorption by the Thermophile *Anoxybacillus flavithermus* in Single and Multi-metal Systems". *Chemical Biology*. 244:493-506.
7. Freundlich, H. 1906. "Ueber die Adsorption in Loesungen". *Z. Physic. Chem*. 57: 385-470.
8. Hawari, A.H. and Mulligan, C.N. 2007. "Effect of the Presence of Lead on the Biosorption of Copper, Cadmium, and Nickel by Anaerobic Biomass". *Process Biochemistry*. 42:1546-1552.
9. Green-Ruiz, C., Rodriguez-Tirado, V., and Gomez-Gil, B. 2008. "Cadmium and Zinc Removal from Aqueous Solutions by *Bacillus jeotgali*: pH, Salinity, and Temperature Effects". *Bioresource Technology*. 99:3864-3870.
10. Jacques, R.A., Lima, E.C., Dias, S.L.P., Mazzocato, A.C., and Pavan, F.A. 2007. "Yellow Passion-Fruit Shell as Biosorbent to Remove Cr(III) and Pb(II) from Aqueous Solution". *Separation Purification Technology*. 57:193-198.
11. Kilic, M., Keskin, M.E., Mazlum, S., and Mazlum, N. 2008. "Effect of Conditioning for Pb(II) and Hg(II) Biosorption on Waste Activated Sludge". *Chemical Engineering and Processing*. 47:31-40.
12. King, P., Rakesh, N., Beenalahari, S., Prasanna Kumar, Y., and Prasad, V.S.R.K. 2007. "Removal of Lead from Aqueous Solution using *Syzygium cumini* L.: Equilibrium and Kinetic Studies". *Journal of Hazardous Materials B*. 142:340-347.
13. Krishmani, K.K., Meng, X., Christoldoulatos, C., and Boddu, V.M. 2008. "Biosorption Mechanism of Nine Different Heavy Metals onto Biomatrix from Rice Husk". *Journal Hazardous Materials*. 153: 1222-1234.
14. Langmuir, I. 1918. "The Adsorption of Gases on Plane Surfaces of Glass, Mica and Platinum". *Journal of American Chemical Society*. 40:1361-1403.
15. Mashitah, M.D., Azila, Y.S., and Bhattia, S. 2008. "Biosorption of Cadmium (II) Ions by Immobilized Cells of *Pycnoporus sanguineus* from Aqueous Solution". *Bioresource Technology*. 99:4742-4748.
16. Panda, G.C., Das, S.K., and Guha, A.K. 2008. "Biosorption of Cadmium and Nickel by Functionalized Husk of *Lathyrus sativus*". *Colloids and Surfaces*. 62:173-179.
17. Pandey, P.K., Verma, Y., Choubey, S., Pandey, M., and Chandrasekhar, K. 2008. "Biosorptive Removal of Cadmium from Contaminated Groundwater and Industrial Effluents". *Bioresource Technology*. 99:4420-4427.
18. Romera, E., González, F., Ballester, A., Blázquez, M.L., and Muñoz, J.A. 2007. "Comparative Study of Biosorption of Heavy Metals using Different Types of Algae". *Bioresource Technology*. 98:3346-3353.
19. Romera, E., González, F., Ballester, A., Blázquez, M.L., and Muñoz, J.A. 2008. "Biosorption of Heavy Metals by *Fucus spiralis*". *Bioresource Technology*. 99:4684-4693.

20. Sari, A., Tuzen, M., Uluozlu, O.D., and Soylak, M. 2007. "Biosorption of Pb(II) and Ni(II) from Aqueous Solution by Lichen (*Cladonia furcata*) Biomass". *Biochemical Engineering Journal*. 37:151-158.
21. Schiewer, S. and Patil, S.B. 2008. "Pectin-Rich Fruit Wastes as Biosorbents for Heavy Metal Removal: Equilibrium and Kinetics". *Bioresource Technology*. 99:1896-1903.
22. Şeker, A., Shahwan, T., Eroğlu, A.E., Yılmaz, S., Demirel, Z., and Dalay, M.C. 2008. "Equilibrium, Thermodynamic and Kinetic Studies for the Biosorption of Aqueous Lead (II), Cadmium (II), and Nickel (II) Ions on *Spiulina platensis*". *Journal Hazardous Materials*. 154:973-980.
23. Tsui, M.T.K., Cheung, K.C., Tam, N.F.Y., and Wong, M.H. 2006. "A Comparative Study on Metal Sorption by Brown Seaweed". *Chemosphere* 65: 51 – 57.
24. Uluozlu, O.D., Sari, A., Tuzen, M., and Soylak, M. 2008. "Biosorption of Pb(II) and Cr(III) from Aqueous Solution by Lichen (*Parmelina tiliaceae*) Biomass". *Bioresource Technology*. 99:2972-2980.
25. Veglio, F. and Beolchini, F. 1997. "Removal of Metals by Biosorption – A Review". *Hydrometallurgy*. 44:301-316.
26. Vilar, V.J.P., Loureiro, J.M., Botelho, C.M.S., and Boventura, R.A.R. 2008. "Continuous Biosorption of Pb/Cu and Pb/Cd in Fixed-Bed Column using Algae *Gelidium* and Granulated Agar Extraction Algal Waste". *Journal of Hazardous Materials*. 154:1173-1182
27. Ziagova, M., Dimitriadis, G., Aslanidou, D., Papaioannou, X., Tzannetaki, E.L., and Liakopoulou-Kyriakides, M. 2007. "Comparative Study of Cd(II) and Cr(VI) Biosorption on *Staphylococcus xylosus* and *Pseudomonas sp.* in Single and Binary Mixtures". *Bioresource Technology*. 98:2859-2865.

ABOUT THE AUTHORS

N.A.A. Babarinde, Ph.D. is a Senior Lecturer in Biophysical Chemistry, Department of Chemical Sciences, Olabisi Onabanjo University Ago-Iwoye, Nigeria. Presently, he is on leave at Redeemer's University, Redemption City, Ogun State, Nigeria. He studies biosorption of heavy metals from solution using biomass.

J.O. Babalola, Ph.D., is a Senior Lecturer in Biophysical Chemistry, Department of Chemistry,

University of Ibadan, Ibadan, Nigeria. He studies biosorption of heavy metals from solution using biomass.

A.C. Onabanjo, B.Sc., graduate of the Chemistry, Department of Chemical Sciences, Olabisi Onabanjo University Ago-Iwoye, Nigeria.

SUGGESTED CITATION

Babarinde, N.A.A., J.O. Babalola, and A.C. Onabanjo. 2008. "Kinetic, Equilibrium, and Thermodynamic Studies of the Biosorption of Pb(II) from solution by *Calymperes erosum*". *Pacific Journal of Science and Technology*. 9(2):630-637.

