

Supplementary Information

Impacts of Gastropods on Epiphytic Microalgae on the Brown Macroalga *Himantothallus grandifolius*

Charles D. Amsler, Margaret O. Amsler, Michelle D. Curtis, James B. McClintock, and Bill J. Baker

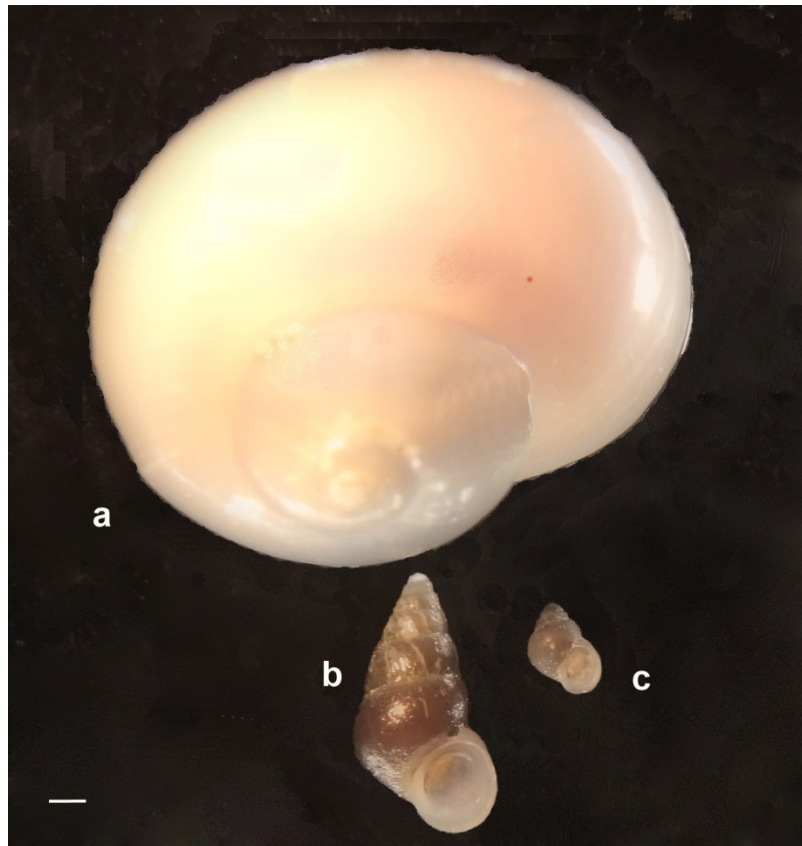
Antarctic Science, 2019



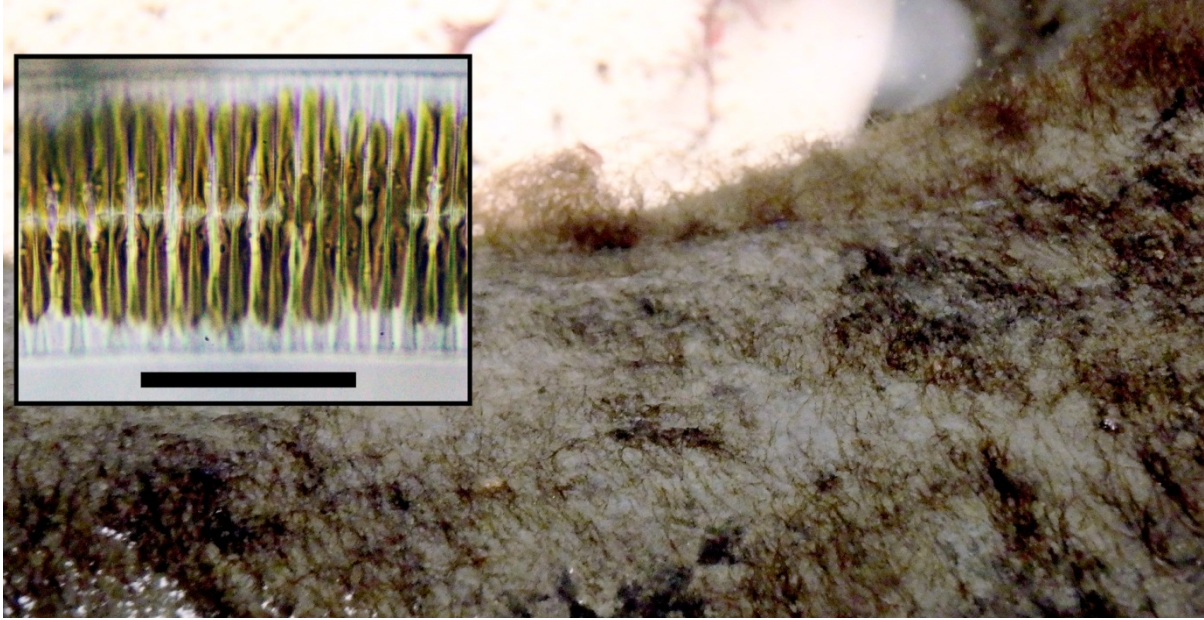
Supplementary Figure 1: Mesocosm set-up on Palmer Station aquarium outdoor deck. Inset is of the interior of a mesocosm containing a rack and rope with three *Himantothallus grandifolius* thallus strips attached.



Supplementary Figure 2: *H. grandifolius* thallus strips from the mesocosm experiment showing placement of paired 15-mm diameter cores used for microscopic estimation of diatom cover. The strips were controls, but prior to the photograph had been held for hours in an aquarium with large limpets, other, smaller gastropods, and a sea urchin which had partially grazed their surfaces. Scale bar = 10 cm.



Supplementary Figure 3: Representative individuals of gastropod species used in the incubator experiment. **a.** *Margarella antarctica*. **b.** *Eatoniella kerguelenensis regularis*. **c.** *Eatoniella calignosa*. Scale bar = 1 mm.



Supplementary Figure 4: The top of a control *H. grandifolius* thallus strip from the mesocosm experiment showing the filament-like diatoms covering the surface. Inset is a photomicrograph of part of one of the diatom chains. Scale bar = 20 μm .