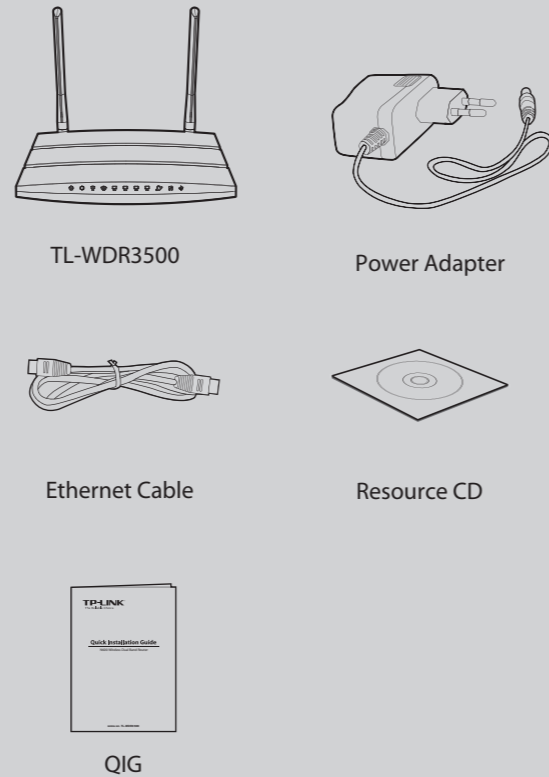


## Quick Installation Guide

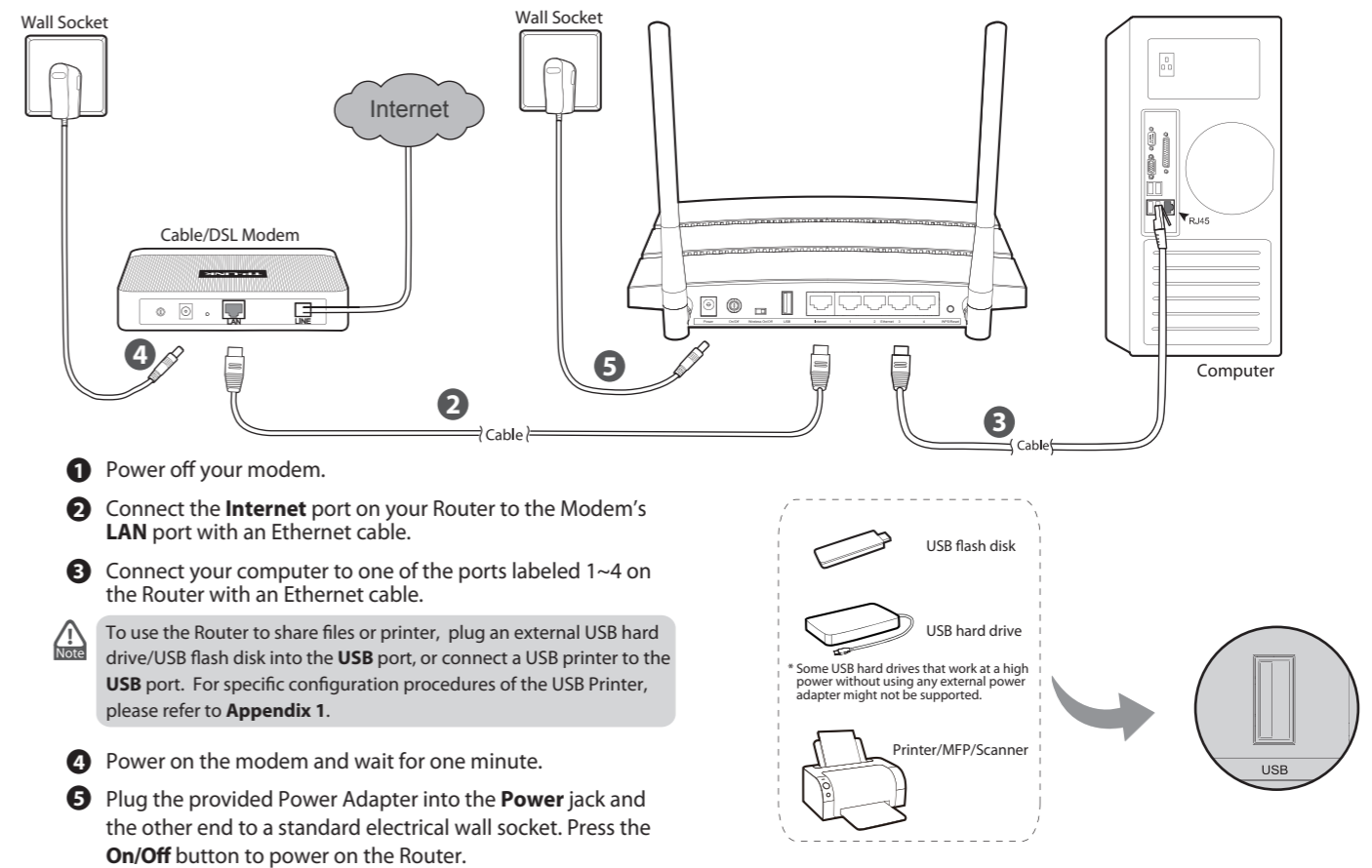
N600 Wireless Dual Band Router

MODEL NO. TL-WDR3500

### Package Contents



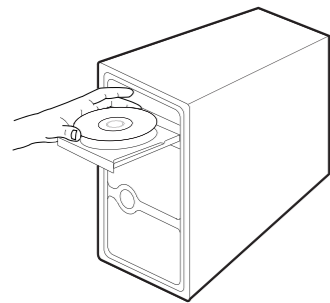
## 1 Hardware Connection



## 2 Configuration for Windows with Setup Wizard

If you are using a MAC/Linux or a Windows computer without a CD drive to run the mini CD, please refer to **Appendix 2** for configuration.

- 1** Insert the TP-LINK Resource CD into the CD-ROM drive.



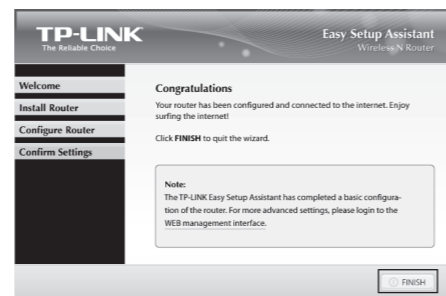
- 2** Select **TL-WDR3500** and click **Easy Setup Assistant**.



- 3** Select your language from the drop-down menu. Click **START** and the **Easy Setup Assistant** will guide you step by step to set up the Router.



- 4** Follow the instructions until you see the screen below. Click **FINISH** to complete the setup.



## Appendix 1: Configuring the USB Printer

The USB Printer Setup Wizard is currently supported in Windows 7 32/64bit, Windows Vista 32/64bit, Windows XP 32/64bit. Please follow the steps below to finish the printer configuration. For Mac users, please go to our website [www.tp-link.com](http://www.tp-link.com) to download the utility.

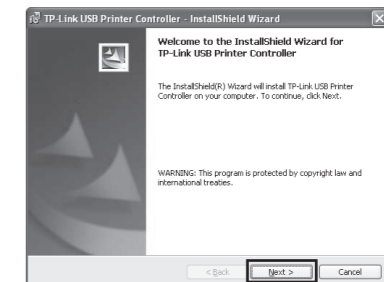
- 1** Insert the TP-LINK Resource CD into the CD-ROM drive. Select **TL-WDR3500** and click **USB Printer Setup**.



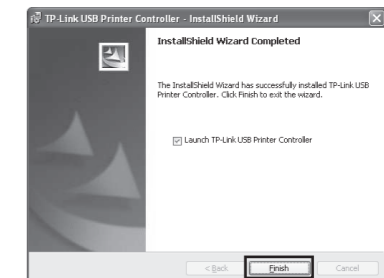
- 2** Click **START** and the **USB Printer Setup Wizard** will guide you step by step to set up the USB Printer.



- 3** Click **Next** and go on to install TP-LINK USB Printer Controller. Then follow the instructions step by step.



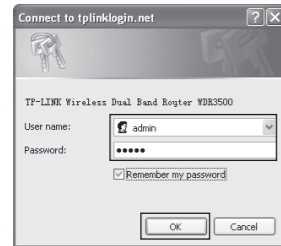
- 4** Click **Finish** on final screen to complete the installation for TP-LINK USB Printer Controller.



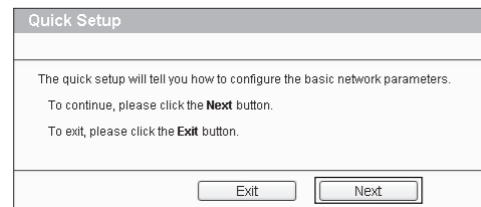
**Note** For more details about the Print server, please refer to **Print Server Application Guide** downloaded from our website: [www.tp-link.com](http://www.tp-link.com). For more details about the configuration of USB Storage/FTP Server/Media Server functions for USB ports, please refer to **User Guide** in the resource CD.

## Appendix 2: Configure the Router via Web Management Page (for Mac OS X/Linux users or Windows users who can't run the mini CD)

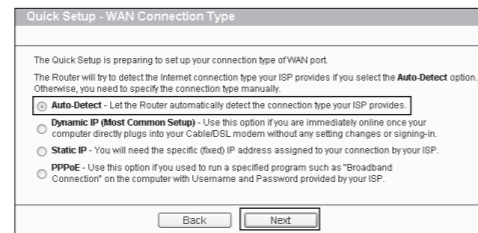
- 1 Open your web browser and type <http://tplinklogin.net> in the address bar. Then type **admin** both for User name and Password to log in.



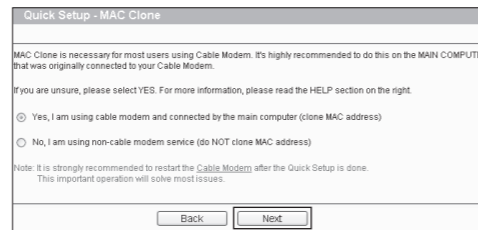
- 2 Click **Quick Setup** in the main menu and click **Next**.



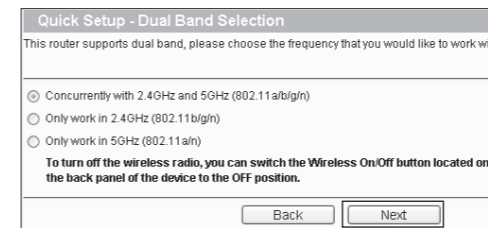
- 3 Select **Auto-Detect** to detect the Internet connection type and click **Next**.



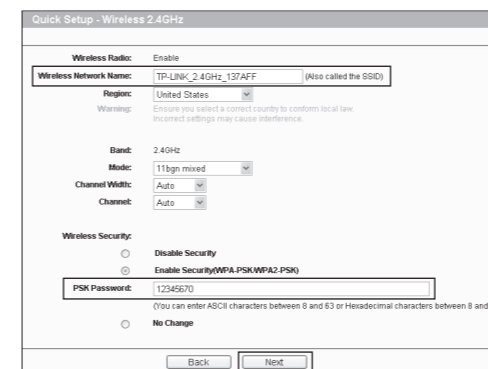
- 4 The **Dynamic IP** is the suitable connection type for most cases. Here we take it as an example. On the next page, the cable modem users may need to clone the MAC address from their main computer - the computer which is used to connect with the cable modem. Then click **Next**.



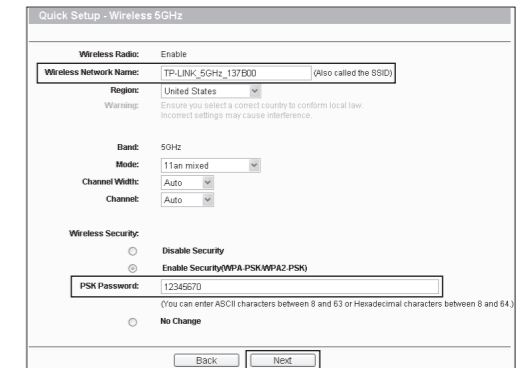
- 5 Choose the frequency you want for your wireless network and then click **Next**. For example we choose "concurrently with 2.4GHz and 5GHz (802.11 a/b/g/n)" below.



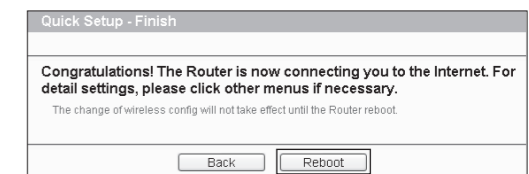
- 6 You can rename your 2.4GHz wireless network and create your own password in this page. The default wireless name is TP-LINK\_2.4GHz\_XXXXXX; and the default wireless password, the same as the PIN code, is printed on the bottom label. Click **Next** to continue.



- 7 You can rename your 5GHz wireless network and create your own password in this page. The default wireless name is TP-LINK\_5GHz\_XXXXXX; and the default wireless password, the same as the PIN code, is printed on the bottom label. Click **Next** to continue.



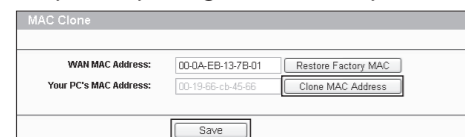
- 8 Click **Reboot** or **Finish** to make your settings take effect.



## Troubleshooting

### 1. What can I do if I cannot access the Internet?

- 1) Check to verify all connections are connected properly. Try with different Ethernet cables to ensure they are working properly.
- 2) Check to see if you are able to access the Router's web management page. If not, please refer to "What can I do if I cannot open the web management window?".
- 3) Please log in the web management page (<http://tplinklogin.net>), click the menu "Network > WAN", and ensure that the WAN Connection Type is Dynamic IP; this is the suitable connection type for most DSL/Cable modem and other network.
- 4) For cable modem users, please click menu "Network > MAC Clone". Click **Clone MAC address** button and then the Router, try to access the Internet from your computer. If the problem persists, please go to the next step.



- 5) Connect your computer directly to your modem and attempt to access the Internet. If you are still unable to access the Internet, please contact your internet provider for further assistance.

### 2. What can I do if I cannot open the web management window?

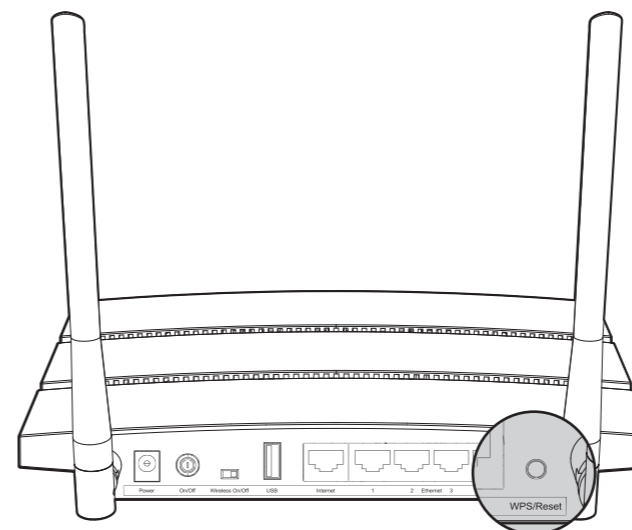
- 1) **For Windows 7/Vista**  
Go to 'Start > Settings > Control Panel'. Click 'View network status and tasks > View status > Properties' and double-click 'Internet Protocol Version 4 (TCP/IPv4)'. Select 'Obtain an IP address automatically', choose 'Obtain DNS server address automatically' and click 'OK'.
- 2) **For Windows XP/2000**  
Go to 'Start > Control Panel'. Click 'Network and Internet Connections > Network Connections'. Right-click 'Local Area Connection', select 'Properties' and then double-click 'Internet Protocol (TCP/IP)'. Select 'Obtain an IP address automatically', choose 'Obtain DNS server address automatically' and click 'OK'.

### 3. What can I do if I forget my password?

- 1) For default wireless password:  
Please refer to the "Wireless Password/PIN" labeled on the bottom of the Router.
- 2) For the web management page password:  
Reset the Router first and then use the default user name and password: admin, admin.

### 4. How do I restore my Router's configuration to its factory default settings?

If your Router does not work properly, you can reset it and then configure it again. With the Router powered on, press and hold the **WPS/Reset** button on the rear panel for approximately 8 seconds before releasing it.



## Technical Support

- For more troubleshooting help, go to <http://www.tp-link.com/en/support/faq>
- To download the latest Firmware, Driver, Utility and User Guide, go to <http://www.tp-link.com/en/support/download>
- For all other technical support, please contact us by using the following details:

**Global**  
Tel: +86 755 26504400  
E-mail: [support@tp-link.com](mailto:support@tp-link.com)  
Service time: 24hrs, 7days a week

**Singapore**  
Tel: +65 62840493  
E-mail: [support.sg@tp-link.com](mailto:support.sg@tp-link.com)  
Service time: 24hrs, 7days a week

**UK**  
Tel: +44 (0) 845 147 0017  
E-mail: [support.uk@tp-link.com](mailto:support.uk@tp-link.com)  
Service time: 24hrs, 7days a week

**USA/Canada**  
Toll Free: +1 866 225 8139  
E-mail: [support.usa@tp-link.com](mailto:support.usa@tp-link.com)  
Service time: 24hrs, 7days a week

**Malaysia**  
Tel: 1300 88 875465 (1300 88TPLINK)  
E-mail: [support.my@tp-link.com](mailto:support.my@tp-link.com)  
Service time: 24 hrs a day, 7days a week

**Turkey**  
Tel: 444 19 25 (Turkish Service)  
E-mail: [support.tr@tp-link.com](mailto:support.tr@tp-link.com)  
Service time: 9:00 AM to 6:00 PM, 7days a week

**Poland**  
Tel: +48 (0) 801 080 618 / +48 22 7217563 (if calls from mobile phone)  
E-mail: [support.pl@tp-link.com](mailto:support.pl@tp-link.com)  
Service time: Monday to Friday 9:00 AM to 5:00 PM. GMT+1 or GMT+2 (Daylight Saving Time)

**Germany / Austria**  
Tel: +49 1805 875465 (German Service)  
+49 1805 TPLINK  
E-mail: [support.de@tp-link.com](mailto:support.de@tp-link.com)  
Fee: 0.14 EUR/min from the German fixed phone network and up to 0.42 EUR/min from mobile phone  
Service Time: Monday to Friday 9:00 AM to 6:00 PM. GMT+1 or GMT+2 (Daylight Saving Time in Germany)  
\* Except bank holidays in Hesse

**Australia & New Zealand**  
Tel: AU 1300 87 5465 / NZ 0800 87 5465  
E-mail: [support@tp-link.com.au](mailto:support@tp-link.com.au)  
Service time: 24hrs, 7 days a week

**Italy**  
Tel: +39 02 66987799  
E-mail: [support.it@tp-link.com](mailto:support.it@tp-link.com)  
Service time: 9:00 AM to 6:00 PM, from Monday to Friday

**Ukraine**  
Tel: +0-800-505-508  
E-mail: [support.ua@tp-link.com](mailto:support.ua@tp-link.com)  
Service time: Monday to Friday 14:00 PM to 22:00 PM

**Brazil**  
Toll Free: 0800-770-4337 (Portuguese Service)  
E-mail: [suporte.br@tp-link.com](mailto:suporte.br@tp-link.com)  
Service time: Monday to Saturday 08:00 AM to 08:00 PM

**Indonesia**  
Tel: (+62) 021 6259 135  
E-mail: [support.id@tp-link.com](mailto:support.id@tp-link.com)  
Service time: Monday to Friday 9:00 -12:00; 13:00 -18:00 \*Except public holidays

**Switzerland**  
Tel: +41 (0) 848 800998 (German Service)  
E-mail: [support.ch@tp-link.com](mailto:support.ch@tp-link.com)  
Fee: 4-8 Rp/min, depending on rate of different time  
Service time: Monday to Friday 9:00 AM to 6:00 PM. GMT+1 or GMT+2 (Daylight Saving Time)

**Russian Federation**  
Tel: 8 (499) 754-55-60 / 8 (800) 250-55-60 (toll-free call from any RF region)  
E-mail: [support.ru@tp-link.com](mailto:support.ru@tp-link.com)  
Service time: from 10:00 to 18:00 (Moscow time)  
\*Except weekends and holidays in Russian Federation

**France**  
Tel: +33 (0) 820 800 860 (French service)  
Email: [support.fr@tp-link.com](mailto:support.fr@tp-link.com)  
Fee: 0.118 EUR/min from France  
Service time: Monday to Friday 9:00 AM to 6:00 PM (Except French Bank holidays)