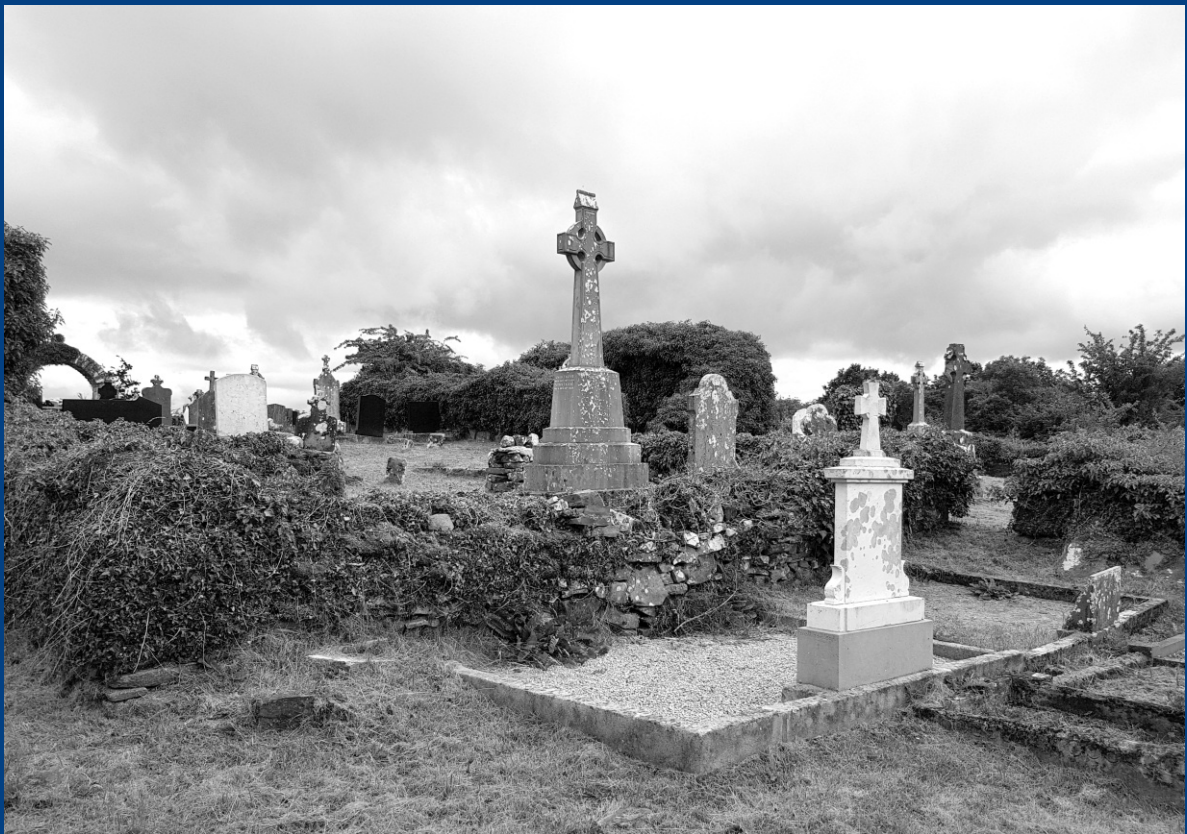


# Westmeath Graveyard Project: Audit & Gap Survey of Headstone Recording



GIACOMETTI

12/07/2018



WESTMEATH COUNTY COUNCIL  
Comhairle Chontae na hIarmhí

archaeology plan  
HERITAGE SOLUTIONS

# Westmeath Graveyard Project: Audit and Gap Survey of Headstone Recording

## The project

Archaeology Plan conducted an audit and gap survey of historic graveyards in Westmeath in 2018. This is the first part of a larger project by Westmeath County Council on the care, conservation and recording of historic graveyards in the county, with funding from the Heritage Council. The aim of the audit and gap survey was to identify the historic graveyards in Westmeath, then to determine which graveyards have been recorded, the level of recording completed, where the information gathered is currently held, and if it is publicly available. It was a desktop study only, and did not involve visits to individual graveyards. The data was mapped, and provided to the Heritage Office at Westmeath County Council for public dissemination.

## What is a historic graveyard?

The historic graveyards of Westmeath play a critical role in the heritage of the county. They are locations for the remembrance of the dead, and the ancestors of the community, and preserve local genealogical and historical knowledge. They also frequently contain features of archaeological, architectural, artistic and natural heritage importance. This is reflected in the way historic graveyards are frequently listed in the Record of Monuments and Places, the list of Protected Structures, and the National Inventory of Architectural Heritage. It is also reflected in the way that historic graveyards are frequently a focus of community-led heritage schemes, as is evident in the data produced by this project.

The term *historic graveyard* is used to describe all graveyards and burial grounds predating the early 20<sup>th</sup> century (O'Brien 2011, 6). Generally, graveyards are distinguished from burial grounds, in that the former are associated with churches while the latter are not.



The historic graveyards documented in this study include a great variety of features and settings. They include St Munna's medieval graveyard in Glebe, part of which may date back to the origins of Irish Christianity, human bone identified during the ploughing of a raised part of the 'chapel field' near a whitethorn bush in Kilbrennan, the 17<sup>th</sup> century Nugent armorial plaque at Finnea Bridge, the 17<sup>th</sup> century historic graveyard in Newtownlow, the 18<sup>th</sup> century Quaker cemetery in Moate, a children's burial ground at Carrick, the union workhouse graveyard used during the famine in Robinstown, the obelisk commemorating the former graveyard at St Peter's Church in Athlone, the 19<sup>th</sup> century Cook Mausoleum at Reynella, and the late 19<sup>th</sup> modern lawn cemetery at Ballyglass outside Mullingar. All of these different types of sites are included in this study under the general category of *historic graveyard*.

TRACING  
your  
WESTMEATH  
ANCESTORS  
GRETTA CONNELL



Ballybrennan	32	(SMR) 55 Cemetery.	32/06/5
Ballybricoge	31	See P. 199 "Kilcumreregh" 30/01/6 SMR Burial site. R.C. Chapel & land 1a. 2r. 16p.	(SMR) 4. Burial site.

Drumraney/Tang  
s of Roscommon were  
a gable of the ancient  
p.505 (closed)

Kilbeggan

Castlepollard.  
and when extracting  
Magazine, 1994."

cher or Horseleap.  
Clara.  
4, Vol. VII, 1907;

St. Mary's

St. Mary's

St. Mary's

St. Mary's  
s had been buried in  
se."   
ndan O'Brien, 1995.

's St. Peter's  
ught St.)

Kilcumreregh.  
ed near Ballinderry.  
main in a disused  
"the O'Melaghilins."  
(Liam Cox).

Tubber

Ballylough	9	Private Nugent burial ground on Ballylough Estate. Clonmellon.
Ballyahillroe	36 (FXM) (SMR) 13.	Church (Site of) Killeagh
Ballyglass	19	in townland of Robinstown, opened March 1891. Mullingar.
Ballykeeny	24/11/3 SMR	Cist. 24/11/4 Cemetery.
Ballykilmore	33,39	"South of the present graveyard, opened in 1929, there was an old burial place. No trace of this place remains as there was intensive land reclamation carried out here a few years ago. Many locals recall seeing head stones at this spot and human remains were discovered during road widening operations in the 1930's." Tyrrellspass Past and Present. 1986.
Ballykilroe	32	Castletown Geoghegan. A small field here called the "stony garden" is said to have been a grave-yard. In 1970 a cist was discovered by Francis Deegan whilst ploughing on his farm." - Ballinagore through the Ages" 2001 p. 89.
Ballytoughloe	30	"Memorials of the Dead" Vol. III, 1897. Vol. XI, 1921-25. inscribed by Liam Cox, "Irish Ancestor" No. 2, 1972.
Ballymanus	3	Church site (SMR) Rathgarve Castlepollard
Ballymorin	17	Almoritia Church and Grave Yard. 2r.20p. Ballymorin Cross site (SMR) Cogan II p.444 Inscribed by Mícheál Ó Conlain and Watson Mills.
Ballymore	24 (FXM*)	St. Owen's 1a.0r.20p. Ballymore Ballymore Augustinian canons & Nuns. Cogan II .495 "Memorials to the Dead" Vol. XIII, 1910. (closed) "Beneath the Shadow of Uisneach".
Ballymore	24	"Beneath the Shadow of Uisneach". Ballymore
Ballyabarua	31	See Kilcumreregh
Ballynacarrigy	11	R.C. Chapel. Ballynacargy
Ballynacilly	15	Burying Ground. 1r.0p. Kilkenny West 15/06/1 SMR Burial ground.
Ballynagall	12	Ch. & Graveyard. 2r. 0p Portnashangan Taghmon St. Mary's Church (1914) "Grand Juries of Westmeath" John Charles Lowe 1852

The two existing surveys of Westmeath historic graveyards: Connell 2012, left, and Ó Conlain 2009, right

## Identification of sites

The first stage of the project involved identifying which historic graveyards would be included in the audit. This was done by four criteria: archaeological, architectural, local knowledge, and current use.

1) A search through the Record of Monuments and Places of the National Monument Service (available online at [www.archaeology.ie](http://www.archaeology.ie)) of every burial ground, graveyard, churchyard, mausoleum, armorial plaque and children's burial ground in Westmeath. Erroneous entries, pre-historic burial sites, and architectural armorials were omitted, leaving 138 monuments belonging to 136 historic graveyards.

2) A search through the Record of Protected Structures of Westmeath County Council (available online at [www.westmeathcoco.ie](http://www.westmeathcoco.ie)) and the National Inventory of Architectural Heritage (available online at [www.buildingsofireland.ie](http://www.buildingsofireland.ie)) for sites that refer to graveyards or cemeteries. This identified 84 sites on the RPS, and 86 sites on the NIAH, and both lists were almost identical.

3) A search through two existing surveys of Westmeath historic graveyards. The first and largest is by Michael Ó Conlain (2009 Alphabetical List of Westmeath Burial Sites, Westmeath Archaeological and Historical Society). This fantastic resource lists every burial site in the county and provides information on whether the site has been surveyed. The second survey is by Greta Connell (2012, A Guide to Tracing your Westmeath Ancestors, Flyleaf Press, Dublin), and is an alphabetical list of surveyed graveyards. Both are fantastic resources. The graveyards recorded by Ó Conlain and Connell are organised by local name, rather than location, and include graveyards from adjacent counties such as a Cavan and Longford, as well as graveyards which have not been located on the ground.

4) A search through the 147 sites listed in the 'List of Burial grounds in County Westmeath by Municipal District'. These corresponded to 139 historic graveyards and modern extensions to historic graveyards.

At the end of this process, 201 historic graveyards were identified, which generally appeared on multiple datasets set out above. Two additional entries were then added: Moyvoughly Old School, and the Church of the Immaculate Conception in Tang. Neither site appeared on the RMP, RPS, NIAH or WM List of Burial Grounds, however the former is listed in both Connell's 2012 list and Ó Conlain's 2009 list of Westmeath burial grounds, as the latter has been recorded by the local community (refer *Historic Graves* website *WM-MARY*).

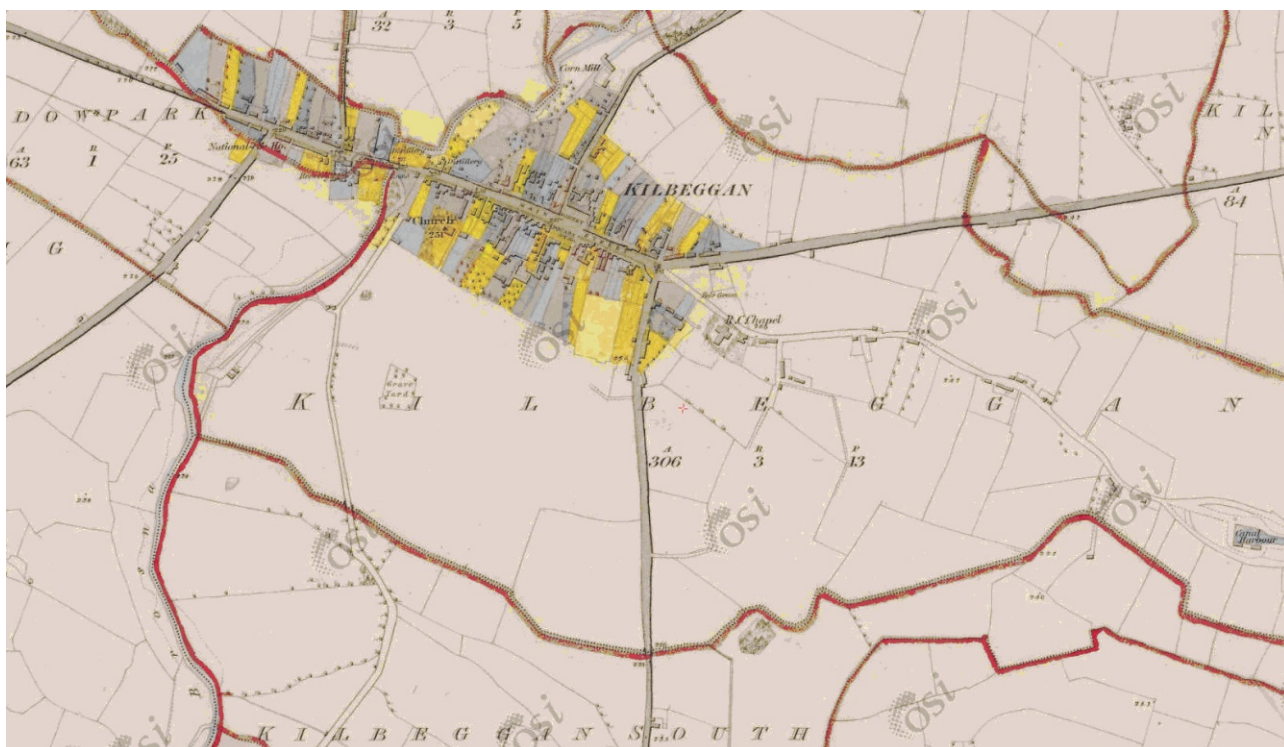
Source	Total
WM Graveyards	139
RMPs	138
NIAH	86
RPS	84
Connell 2012	116
Ó Conlain 2009	172
Additional site	1
<b>All</b>	<b>203</b>

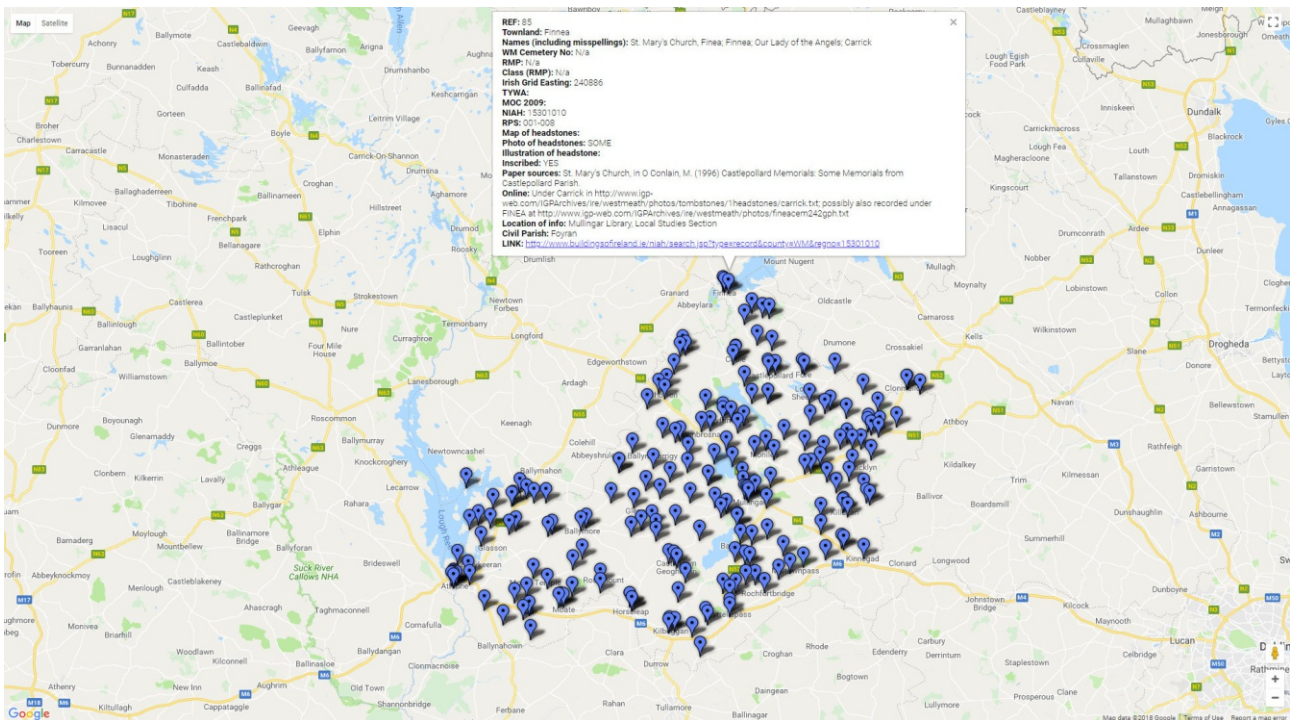
## Organisation of data

The key organisational reference for the graveyard data in this survey is the townland name. The townland is the smallest officially-recognised administrative division in Ireland (Connell 2012, 17) and forms the most basic rural address system in the country. Where there are more than one townland, the Civil Parish is also provided in brackets (or Barony if more appropriate). Where a townland has multiple names, the name and spelling on the First Ordnance Survey 1835-1846 (available online at *OSI.ie*) were selected as the most practical primary key to use in recording and tabulating the data.

The data has also been sorted by Civil Parish, which is the most used land division in documentary records of Westmeath (Connell 2012, 18). Civil Parishes are identical to Church of Ireland Parishes in Westmeath (*ibid*, 23). Barony is also listed, as this can correlate to information on 17<sup>th</sup> century land surveys (*ibid*, 18).

First-edition c. 1840 Ordnance Survey map of Westmeath, available online at [www.osi.ie](http://www.osi.ie)





The completed map accompanying this study, available online at [archaeologyplan.com/projects/westmeath-graveyard-survey](http://archaeologyplan.com/projects/westmeath-graveyard-survey), and soon to be made available on westmeath county council website

The names of graveyards could not be used as organisational sorters, because many of the graveyards have multiple names, or names of graveyards change over time. Many of the graveyards have the same name, for example eighteen graveyards in the study are named St Mary's. Sometimes the saint after which the graveyard is named changes over time, for example in Ballymore, the medieval St Mary's graveyard has become St Owen's today. Similarly, the denomination of church sites also change, or in the case of the early church are not applicable, so this could not be used to distinguish sites. Most of the graveyard surveys and records identified in this study identified graveyards primarily by name and denomination, for example St Mary's (Church of Ireland), creating a challenge with the identification of sites and the matching of datasets.

## Digitisation and presentation

The data was recorded on a spreadsheet (MS excel) then uploaded to a Google app called 'Fusion Tables'. This app allowed the longitude and latitude columns to be geocoded, and translated directly to a set of markers on an online Google Map. The information available in the info window (when a point on the map is clicked) was reduced for clarity by means of a simple filter, but the full information is also available in the accompanying spreadsheet. The map can also be filtered, for example under the Yes/No category of 'Gravestones Inscribed', for example, and search boxes can be added for graveyard name(s), and townland.

One very important point is that all accents on Irish names (such as Ó Conlain) were intentionally removed in the database. This is because as database files are converted and saved, they cannot handle accents, and transform them into illegible script.

## Analysis of previous recording

All of the previously recorded paper surveys of Westmeath graveyards are centralised in the Local Studies section of the Mullingar County Library. All of the relevant sources in the graveyard section of the library were assessed, and these are:

- Anon (nd) Ballyloughloe/Kilcleage: Inscriptions from 'Memorials of the Dead' (extract in Mullingar Library)
- Anon (n.d.) Small entry in Mullingar Library 'Hopetown Cemetery'
- Bagnall, R. (1995) Headstone Inscriptions of St. Hugh's Cemetery, Rahugh.
- Conlain, M. & Cotter, J. (2008) Index to Burials at St. Etchen's Graveyard, Killucan
- Cormack, A.S. (nd) Graveyard Inscriptions, Templepatrick, Moyvore
- Cox, L. (1972) 'Monumental Inscriptions from Mount Temple Churchyard', in The Irish Ancestor No. 2. Extract in Mullingar Library.
- Fitzpatrick, L. (nd) An Account of the Graveyard and Gravestone Inscriptions: St. Mary's Church of Ireland, Athlone
  - Flynn, K. (nd) St. James' Parish, Kilbeggan: The Old Graveyard, Relic Cemetery
  - Flynn, K, Casey, J. & Kelly, M. (nd) Graveyard at Newtownlow, Graveyard Inscriptions
  - Flynn, K. & Kelly, M. (c. 2000) Newtown (Low) Graveyard, Tyrrellspass

- French, N. (nd) Killua Churchyard, Clonmellon. County Westmeath Monumental Inscriptions
- Moore, B. & Kenny, M (1980) Headstones in St. Mary's Churchyard, Delvin
- O'Brien, G. (1989) St. Mary's Parish, Athlone: A History. St. Mel's Diocesan Trust, Longford
- Ó Conlain, M. (1996) Castlepollard Memorials: Some Memorials from Castlepollard Parish
- Ó Conlain, M. (1998) Memorials in Mayne and Faughalstown, Mayne Heritage Association
- Ó Conlain, M. (2002) A Partial List of some Memorials in Westmeath Churchyards
- Ó Conlain, M. (2006) Memorial Inscriptions: Walshestown Churchyard
- Ó Conlain, M. (2009) Alphabetical List of Westmeath Burial Sites (Draft). Westmeath Archaeological and Historical Society.
- Ó Conlain, M. (2010) Inscriptions in Westmeath Churchyards, Part Two, Westmeath Archaeological and Historical Society
- Poynton, M. and O'Neill, T. (nd) Headstone Inscriptions. Catalogue. St. Sinian's Churchyard, Tyrrellspass.
- Register of Interments: Ballyglass Cemetery 1891-1911, Microfilm (Mf)
- Register of Interments: Coosan Cemetery 1968-2005, Microfilm (Mf)
- Register of Interments: Cornamagh Cemetery 1871-2005, Microfilm (Mf)
- Reilly, F. W. (2014) Graveyard Inscriptions: Killulagh Cemetery, adjoining St. Livinus Church, Killulagh, Delvin
- Ryan, H. (1994) An Old Abbey Remembered: The Abbey Graveyard, Athlone
- Westmeath Genealogy Project (1992) Graveyard Survey Lynn Church (RC), Mullingar
- Westmeath Genealogy Project (1991) Graveyard Sur-

The highest quality overall paper records are for Kilbeggan/St. Becan's Col, recorded by Stephen Callaghan in 2016 as part of the St. Becan's Memorial Recording Project (in Mullingar Library)

**McKENNA**

IN LOVING MEMORY

OF

WILLIAM M<sup>c</sup>KENNA  
WHO DIED AT ANNEVILLE  
12<sup>th</sup> SEPT 1928 AGED 72 YEARS

ROBERT M<sup>c</sup>KENNA  
WHO DIED AT ANNEVILLE  
29<sup>th</sup> MARCH 1938 AGED 88 YEARS

MARIA M<sup>c</sup>KENNA  
DIED AT ANNEVILLE  
25<sup>th</sup> MAY 1938 AGED 81 YEARS

*"THE JUST SHALL....."*

**Biographical Details:**

William McKenna, d. 12 September 1928, aged 72 years.  
William is recorded on the 1911 census as a farmer and single.

Robert McKenna, d. 29 March 1938, aged 88 years.  
Brother of William McKenna. Robert is recorded as living with William in 1911, he was also a farmer and single.


Maria McKenna, d. 25 May 1938, aged 81 years.

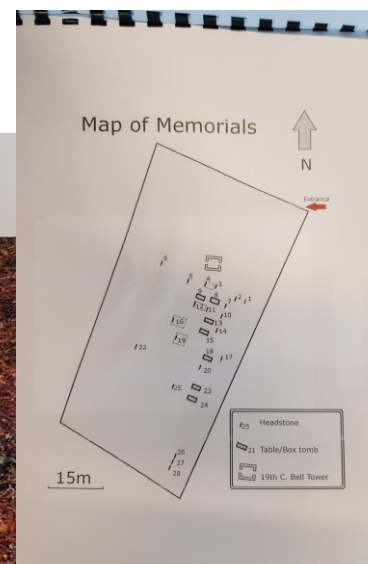
**Description:**

Broken headstone with lead inlay inscription. Made of marble.

**Dimensions:**  
H: n/a      W: 71cm      T: 10cm

**Memorial Number: 28**





vey: All Saints (Col), Mullingar

- Various (1892-1934) Journal of the Association for the Preservation of the Memorials of the Dead in Ireland (& Journal of the Irish Memorials Association), Vols 1+.

In addition, the following sources in the Mullingar library also contained relevant information on memorial and graveyard inscriptions.

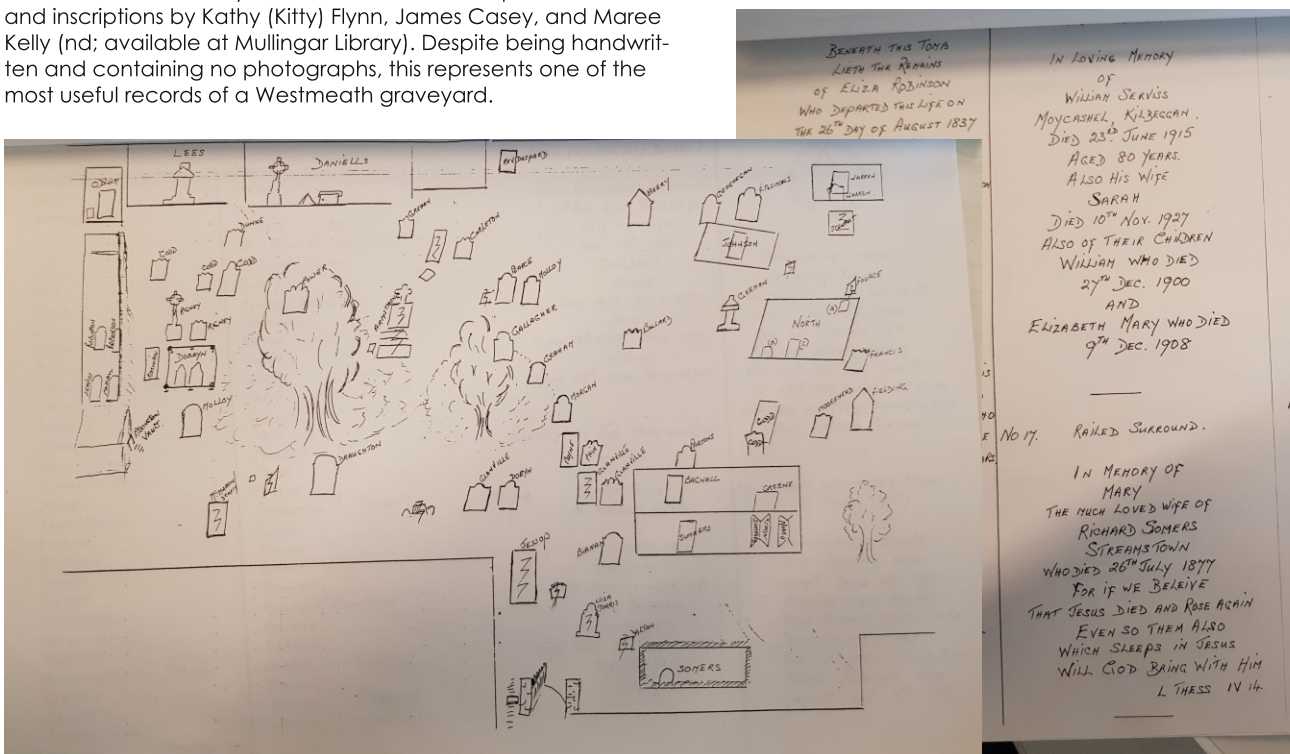
- Cahill, M. and Sikora, M. (eds) 2011 Breaking ground, finding graves - reports on the excavations of burials by the National Museum of Ireland, 1927-2006, 2 vols. Dublin. Wordwell Ltd. in association with the National Museum of Ireland.
- Connell, G. (2012) A Guide to Tracing your Westmeath Ancestors, Flyleaf Press, Dublin.
- Cox, L. (1981) Moate, Co. Westmeath, Alfa Print, Athlone
- Cox, L. Sheehan, J. & Tinsley, B. (1985) Moate Quaker Cemetery, Meath Historical Society, Occ. Paper No. 2, Oct 1985, Reprinted July 2000
- Murry, J. & Sheehan, J. (1995) Rosemount Churches Past and Present, Moate
- Murtagh, H. (ed.) Irish Midland studies: essays in commemoration of N.W. English. Athlone. Old Athlone Society
- Ó Gibeallain, P. (1984) Multyfarnham Abbey: Monuments and Memories, Multyfarnham.
- Sheehan, J. (1996) Beneath the Shadow of Uisneach: Ballymore and Boher.
- Wallace, P (1984) Multyfarnham Parish History, Multyfarnham.

The Journal of the Association for the Preservation of the Memorials of the Dead in Ireland had previously been assessed for Westmeath by Ó Conlain (2009) and Connell (2012) and their collated information was incorporated into the database.

In addition, an internet search was carried out to find any internet records of Westmeath graveyards. The following internet websites were assessed:

- Drumraney Heritage: Preserving the history of the Drumraney Parish <http://drumraneyheritage.com/home/> Published c. 2016.
- From Ireland: Free Irish Genealogy. <http://www.fromireland.net/> Published c. 2001.
- Historic Graves: Explore, protect, promote. <http://historicgraves.com>. Published c. 2012.
- Internment.net: Cemetery Records Online <http://www.interment.net>. Published c. 2018.
- Ireland Genealogy Projects and Ireland Genealogy Projects Archives. <http://www.igp-web.com>. Published c. 2008.
- Irish Genealogy.ie: Explore Your Family History <https://www.irishgenealogy.ie/en/> Published c. 2013.
- National Monuments Service: Archaeological Survey of Ireland. The online RMP Files also contain information on some gravestones, in particular armorial plaques or medieval crosses. <https://www.archaeology.ie/archaeological-survey-ireland> Published c. 2015.

Newtownlow cemetery has excellent sketch map and illustrations and inscriptions by Kathy (Kitty) Flynn, James Casey, and Maree Kelly (nd; available at Mullingar Library). Despite being handwritten and containing no photographs, this represents one of the most useful records of a Westmeath graveyard.



Drumraney Heritage  
Preserving the history of the Drumraney Parish

Home About Drumraney Projects Useful Links News Contact Us

Graveyard Map  
Click the map below to view a gravestone

Legend: ○ Headstone  
⊗ Marker Stone

Main Gate  
Bench  
Large Tree  
Turnstile

Drumraney Old Cemetery

Grave Number: 112

Transcription:

O Lord have Mercy  
Soul of Bryan Carty who Depd  
this life Decr ye 24th 1814 Agd 71  
yrs  
Also his wife Mary Carty  
Alias Lynaugh who Depd Decr  
The 24th 1827 Agd 41 yrs

Erect by their Loving son  
Thos Carty

Those Interred:

Firstname	Surname	Maiden Name/Alias	Year of Death	Age
Mary	Carty	Lynaugh	1827	41
Bryan	Carty		1814	71

Among the highest quality online resource is of Cartroncoragh/ Drumraney graveyard, recorded by the Drumraney Heritage group in 2013 as part of the restoration of the old graveyard.

## Qualitative assessment

In practice, the quality of the various records is hugely variable and only a small minority (less than 5%) of sites have good quality complete records including inscriptions, photographs and a sketch plan of the graves and memorials.

**Inscription Record:** 137 historic graveyards (68%) had a written record of inscriptions, which was higher than anticipated. Many of the records also indicated gravestone material, whether it was broken, inlay/inscription type, and other features, however this varied depending on the author of the record. It was not possible to assess the completeness or accuracy of the inscription record without visiting each graveyard, however in most cases the records appear to be of excellent quality and completeness. 134 of these 137 recorded sites have paper

records that are available at the Local Studies section of Mullingar Library. 38 of the recorded sites have records available online. In general the paper records of inscriptions are more complete and more reliable than the online records, through notable exceptions are the excellent online resources at the Historic Graves website, and the Drumraney Heritage website.

**Illustration:** One site was well illustrated (Newtownlow), but in general there is little or no systematic illustration of Westmeath graveyard stones or memorials.

**Photograph:** Twelve sites were photographed systematically. A further fifteen had some level of photographic record, but these were incomplete. In general, online resources are far better for photographic records of Westmeath graveyards to date, notably the excellent resources at



Ireland Genealogy Projects, Historic Graves, and Drumraney Heritage.

**Map:** Fifteen of the recorded graveyards had a good sketch map of the graveyard noting the position of the recorded gravestones, and a sixteenth recorded graveyard had a vague map.

Only nine sites had records, a sketch map and photos, of which only seven of these were of good quality (four online and three on paper). This represents only 3% of Westmeath's historic graveyards. These were: Ardnacarny North; Cartroncoragh/Drumraney; Clonkeen/Temple Valley; Kilbeggan/St. Becan's CoI; Lebaun/Mount Temple/Ballyloughloe; Loughnaskin/St Mary's Athlone; and Noughaval. A close runner up is Williamstown/Killulagh RC. It is no coincidence perhaps that the best of these is also the most recent, as modern technology (computers and digital photography) make creating and printing complete records much easier than in the past. The highest quality overall paper re-

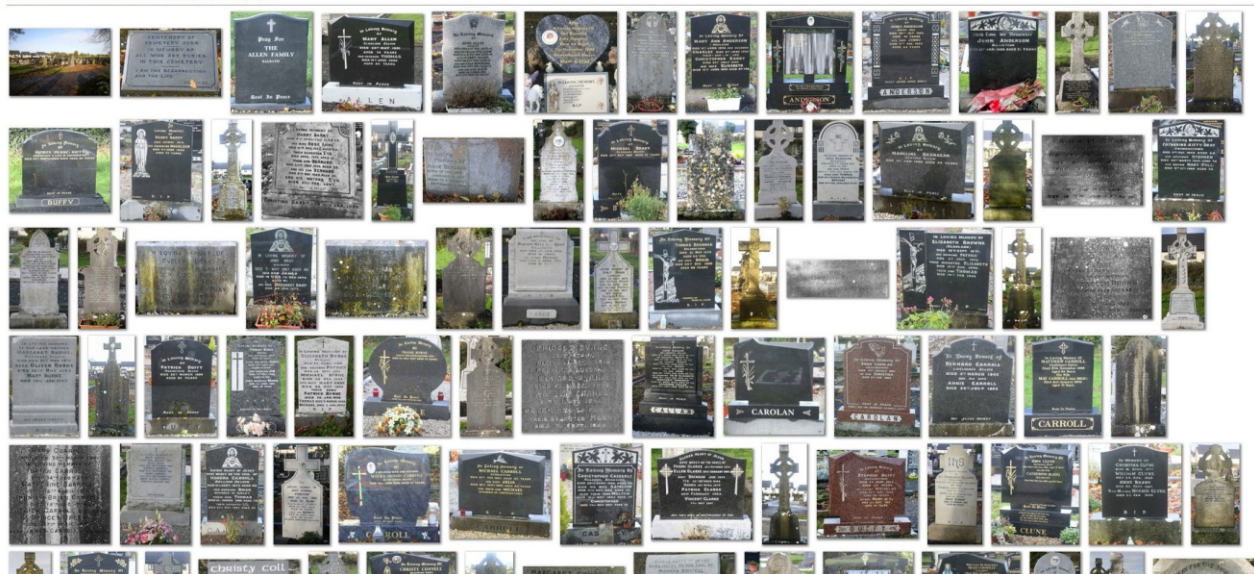
ords are for Kilbeggan/St. Becan's CoI, recorded by Stephen Callaghan in 2016 as part of the St. Becan's Memorial Recording Project (in Mullingar Library). The four online graveyards at Ardnacarny North, Clonkeen/Temple Valley and Noughnaval recorded by Historic Graves, and Cartroncoragh/ Drumraney, recorded by the Drumraney Heritage group in 2013 as part of the restoration of the old graveyard, are equally good.

Other notably good quality records are of Castletowndelvin/Church of the Assumption which has an excellent digital photographic and inscription record online at Ireland Genealogy Projects, contributed by Ken(v?) Murray. Another is Newtownlow cemetery which has excellent sketch map and illustrations and inscriptions by Kathy (Kitty) Flynn, James Casey, and Maree Kelly (nd; available at Mullingar Library). Despite being handwritten and containing no photographs, this represents one of the most useful records of a Westmeath graveyard.

Castletowndelvin/Church of the Assumption which has an excellent digital photographic and inscription record online at Ireland Genealogy Projects, contributed by Ken(v?) Murray.

[Ireland Genealogy Projects Archives](#)  
[Westmeath Headstones](#)  
[Text File](#)  
Delvin Graveyard, Part 1, Westmeath, Ireland (150 images)  
Contributed by: Ken Murray <Kev@eircom.net>  
\* (attached to Church of the Assumption)  
Part 1  
Part 2  
Part 3

[Click a picture to see a larger view.](#) Copyright by Photographer.



# List of historic graveyards in study

Ref.	Townland	Names
1	Abbeyland	Multyfarnham Friary, Abbey, Convent; St Francis Church
2	Adamstown (Moycashel By)	Kilbride church
3	Aghanargit	Station Rd, Moate; St. Joseph's Convent of Mercy, Sisters of Mercy; Aghanarget
4	Anneville Or Rathduff	Anvil; Moylisker Graveyard (old); Monument
5	Archerstown	Archerstown
6	Ardnacrany North	Ardnacrane/Tang; WM-ACNY
7	Ardnaglew	Ardnaglew
8	Ardnagross	Burial Ground
9	Ardnurcher	older graveyard to north of horseleap no. 16; Horseleap
10	Ardnurcher	Horseleap (Col) St David's
11	Athlone	Franciscan Abbey, Coosan Road, Abbey Road, Athlone
12	Athlone	St Mary's Athlone (Col) 37-41 Church Street
13	Athlone and Bigmeadow	Obelisk; Burial Site Athlone (cemetery lane; rear of st peter's church)
14	Athlone and Bigmeadow	Armorial plaques and crossslabs currently in Athlone Castle Museum & National Museum of Ireland, some of which have grave inscriptions
15	Athlone and Bigmeadow	Convent cemetery athlone, Deer Park Road, Lyster Street, Athlone
16	Ballindurrow	Multyfarnham St Andrew's Church in ruins, old cemetery and note modern extension to east of old cemetery
17	Ballinkeeny or Mosstown	Burial Ground
18	Ballybrennan	Burial Ground
19	Ballybrickoge	Rosemount; Ballybricoge; Kilcummragh; St Thomas RC Church
20	Ballycahillroe	Ballybrickoge graveyard
21	Ballykilmore	Tyrrellspass Modern Cemetery
22	Ballymore	Ballymore RC Church of the Holy Redeemer; Church of the Most Holy Redeemer
23	Ballymore	St Owen's Col Church; old Church of Ireland; Ballymore; Site of medieval Church of St Mary; Magan Family Mausoleum
24	Ballymorin	Almoritia Col St Nicholas
25	Ballynacliffy	Coolaleena
26	Ballynacor	Bedlow/Bellew Armorial Plaque, Ballynacore bridge; Ballinacore Bridge
27	Balrath (Moycashel By.)	Balrath, Ballinagore; Toorlisnamore
28	Balreagh	Balreagh; Balreadh
29	Balreth South	Southill (Private)
30	Baronstown Demesne	Kilbixy Church; Leper Hospital; Malone Mausoleum; St. Bigseach's Col Church
31	Barradrum	Streete; Street; St. Mary's Col; St. James Col
32	Boherquill	Boherquill (old); St. Mary's RC Chapel; note Boherquill (new) graveyard to northeast
33	Bracklin	Mausaleum 19th century; Bracklyn; Kilkenna; Fetherston-Haugh Family
34	Bunown	Bunowen
35	Carlanstown	Burial Ground at Carlanstown
36	Carrick (Fartullagh By.)	Carrick
37	Carrick (Kilkenny West By.)	Relicnastia
38	Carrick (Kilkenny West By.)	Burial Ground at Carrick
39	Cartenstown	Burial Ground at Cartonstown
40	Cartroncoragh	Drumraney (old); St. Enan's Monastery; Col
41	Cartronkeel (Clonlonan By.)	Moate Quaker Cemetery; Friends Burial Ground
42	Castlelost	Castlelost
43	Castlelost	Rochfortbridge; Convent of Mercy
44	Castletown	Castletown-geoghegan; St. Michael's Graveyard; Ballina Road
45	Castletown (Moycashel By.)	Castletown-geoghegan Abbey; Main Street
46	Castletown Upper	Castletown; Castletown Lower; St Michael's RC Church
47	Castletowndelvin	Clondone; Union Workhouse graveyard, delvin
48	Castletowndelvin	Delvin; Church of the Assumption
49	Castletowndelvin	Delvin; St Mary's Col
50	Catherinestown	Kilronan Grave Yard (old) with new extension to south
51	Church Island (Lough Owel)	Church Island (Lough Owel)
52	Churchtown (Moygoish By.)	Churchtown/Ballynacargy; Emper Graveyard, Ballynacarrigy, County Westmeath' Victorian tabernacle
53	Churchtown (Rathconrath By.)	Churchtown Col Church; Ballinea
54	Clogher	St. Mary's, Church of the Immaculate Conception, Tang. St. Catherine's RC Church

55	Clonaltra West	Clonaltra West (Baulin Stone)
56	Clonarne	Clonarne
57	Clonfad (Fartullagh By.)	Clonfad (Dalystown)
58	Clonkeen (Kilkenny West By.)	Temple Valley (old); Templevalley; WM-TVLY; Clonkeen; note new extension to north
59	Clonlost	Clonlost
60	Clonmellon	Clonmellon , St. John's (Col) Church
61	Cloonbonny	Cloonbonny; Clonbonny
62	Collegeland	Lisahearin
63	Collinstown	Collinstown, St. Feighin's Col
64	Collinstown	Collinstown St Mary's RC
65	Coolamber	O'Reilly Private Burial Ground; Black
66	Coosan	Coosan; St. Kieran's Cemetery (modern)
67	Corbetstown	Corbetstown; Corbettstown; Scarden
68	Cornaher	Christ Church C of I, Rahinashurock
69	Cornamagh	Cornamagh Modern Graveyard
70	Crosserdree	Crosserdree
71	Croughal	Croughal
72	Crowinstown Great	Crowenstown
73	Culleen More	Levington; Kilbride; Kilbreeda; St. Bridget's Well
74	Drumraney	Cartoncoragh; Drumraney (new graveyard); St Mary's RC Church
75	Dunegan	Dunegan Modern Graveyard; Clonrelick
76	Dysart (Delvin By.)	Dysert Tola
77	Dysart (Moyashel ... By.)	Dysart; Glebe Church
78	Edmondstown (Farbill By.)	Corbally
79	Enniscoffey or Caran	Enniscoffey
80	Fassagh	Fassagh
81	Faughalstown	Faughalstown (Whitehall?)
82	Fearmore (Moygoish By.)	St. Mary's RC Church, Coole
83	Finnea	Nugent Armorial Plaque, Finnea Bridge
84	Finnea	Myles the Slasher Monument, Finnea/Finea
85	Finnea	St. Mary's Church, Finea; Finnea; Our Lady of the Angels; Carrick
86	Fore	St Feighin's; St. Fechin's; ruined church (old early med graveyard in north of town)
87	Fore	St. Mary's; St Feighin's RC (Church) graveyard of WM008; new graveyard extension
88	Foyran	Foyran
89	Gallstown	Gaulstown
90	Glebe (Corkaree By.)	St. Munna's; Taughmon Castle; Taghmon
91	Glebe (Farbill By.)	Killucan; St Etchan's Col; Rathwire; 'Ecthens' (sic, WM)
92	Glenidan	Excavation at site of Priory at Glenidan
93	Gneevestown	Loughnavally; Loughnavalley; Loughnavally; Togherstown; RC Chapel; Church of the Assumption; note church is across the road from graveyard in Togherstown townland
94	Grange Beg	Kilcolumb; Raharney; Grange Beg; Kilcolm Church
95	Griffinstown	Griffinstown graveyard
96	Griffinstown	Excavation at site of ringfort at Griffinstown
97	Heathland	Wilson's Hospital, Multyfarnham
98	Heathstown	St. Agnes; RC Church, Coralstown; Correlstown
99	Hopestown	Hopestown
100	Inchbofin	Lough Ree; Augustinian Church
101	Joanstown	St. Mary's RC Church; Rathowen
102	Johnstown	Sonna RC Church, Ballynacargy
103	Joristown Lower	Excavation at possible cemetery site at Joristown Lower
104	Kilbeg	Horseleap SS Peter and Paul's RC church
105	Kilbeggan	Kilbeggan (Cof I) north; St. Becan's; St. Beacan; Church Lane
106	Kilbeggan	Kilbeggan (old) southernmost, with modern extension; Cistercian Abbey in ruins; Burying Ground; Relic; St. Beacan; St. James' Parish Church Kilbeggan
107	Kilbeggan	Convent of Mercy, Dublin Road, Kilbeggan, County Westmeath, kilbeggan td
108	Kilbrennan	Burial Ground at Kilbrennan, the 'chapel field', the 'mass bush'
109	Kilbride	Cooper Mausoleum; Dunboden Demesne
110	Kilcleagh	Kilcleagh (old), and extension to the south
111	Kilcumny	Drumcree; Kilcumney
112	Kilcumreragh	Kilcumeragh
113	Kilkenny Abbey	Kilkenny West Col Church
114	Kilkenny West	Burial Ground at Kilkenny West
115	Killadoughran	Killadoran
116	Killagh	Killaugh
117	Killahugh	Rathconrath; Glascarn
118	Killarechurch	Kilare; Killare Church
119	Killinroan	No graves on this possible ecc. Site
120	Killomenaghan	Killomenaghan; St. Monaghan's; Mianachan
121	Killulagh	Killulagh old graveyard; Mulchanstown; St. Mulchan's
122	Killynan (Pratt)	Random discovery of human bones
123	Kilmacnevan	Kilmacnevan

124	Kilmaglish	Kilmaglish
125	Kilmore	Kilmore Graveyard
126	Kilnahinch	Monaster
127	Kilpatrick (Fore By.)	Kilpatrick
128	Kilpatrick (Moyashel ... By.)	Charlesland; Kilpatrick Graveyard, near Kilpatrick House
129	Kilpatrick (Moyashel ... By.)	19th century burial ground
130	Kiltoom	Kiltoom graveyard
131	Kinnegad	Main Street, Kinnegad, County Westmeath; kinnegad td St. John the Baptist's Church of Ireland church, now demolished
132	Knock Killua	Knock Killua; Knockkillua; Killua Churchyard
133	Knockmant	Knockmant
134	Labaun	Mount Temple; Ballyloughloe; Holy Trinity Cemetery; Fooran Well
135	Lackan	Lacken
136	Leny	Leney Col Church; Rathbennett
137	Lickbla	Lickblae; Lickblea; Lickleblea; Lickblay; Rathcreevagh
138	Loughstown	St. John's Church, Drumcree; Drumree (sic in O' Conlain)
139	Lynn	Lynn
140	Lynn	Excavation at site of monastery/castle at Lynn
141	Marlinstown	Marlinstown (old), and new extension to west of old burying ground
142	Mayne	Mayne (St. Nicholas?)
143	Meedian	Meedin Parish Church
144	Milltown	Milltown; St Mary's Church
145	Milltown	Whitehall; St. Mary's RC Chapel
146	Milltown (Fartullagh By.)	Milltownpass; Cemetery SW of town
147	Milltown (Fore By.)	Burial Ground at Milltown
148	Moategranoge	St Mary's Col Church, Main Street Moate
149	Moyvoughly	Old School; Moyvoyalough
150	Mullingar	Presbyterian Church, Castle Street, Friars Mill Road, Mullingar; 'Scot's Church'
151	Mullingar	Presentation Convent, next to Cathedral
152	Mullingar	Mullingar All Saints; All Saint's; Col former St Mary's Priory; Church Avenue
153	Mullingar	Loreto Convent, Longford Road, Mullingar, 20th century
154	Multyfarnham or Fearbranagh	Multyfarnham The Rock; Fearbranagh; Rock Cemetery; Donore Rd east of town
155	Newtownlow	Newtownlow; Newtown; Newtown Fertullag; Newtown Fertullagh; Rahinashurock
156	Noughaval	Noughaval; WM-NHVL; Tang
157	Parsonstown	Taughmon; Taghmon RC Church
158	Pass Of Kilbride	Pass of Kilbride
159	Piercefield or Templeoran	Templeoran
160	Portlick	Bunown Col Church
161	Portlick	Portlick; Liss
162	Portloman	Portloman Abbey
163	Portnashangan	Portnashangan Abbey; Knockdrin
164	Raharney	St. Brigid's R.C. chapel
165	Raheen	Alone Alanna; Children's Burial ground in Stuart Griffith's field at Raheen.
166	Rahugh	Rahugh Monastery; St. Hugh's; Rahue
167	Ranalagh	Ss Peter and Paul; St Peters; Barrack Street
168	Rathaspick	Rathaspic; Rathaspick N
169	Rathconnell	Rathconnell
170	Rathgarve	Rathgarve
171	Rathowen (Rathaspick Pa.)	St. Thomas' Church (Col); Rathaspic Parish Church
172	Rathwire Lower	Rathwire St Josephs
173	Rathwire Upper	Killucan Presbyterian Church
174	Rattin	Clonfad 2 (Kinnegad)
175	Relick (Piercetown Pa.)	Relic/Ballynacargy; Piercetown
176	Reynella	Cooke Mausaleum, St. John the Baptist's Church of Ireland church; 'Killyanan'
177	Robinstown (Levinge)	Ballyglass; New Cemetery, Longford Road; Mullingar Town Cemetery; Robinstown
178	Robinstown (Levinge)	Union Workhouse graveyard; Outside Mullingar; Famine; Robinstown (Delvin by)
179	Rochford Demesne	Moylisker Col; Moyliskar
180	Russagh	Russagh
181	Simonstown (Rathconrath By.)	Burial Ground at Simonstown
182	South Hill (southhill)	South Hill Convent Burial Ground; St Mary's Hospital
183	Springfield Or Spittlefield	Hospitalers?
184	Stonehall	Multyfarnham Stonehall; St John The Baptist Church
185	Taghboyne	Taughboyne; Teaghboyne; Teaghboyan; Teaghbogan; Teaghboyan
186	Temple Patrick	Templepatrick
187	Templeoran North	Templeoran
188	Tevrin	Turin RC Church
189	Toberaquill	Tobernaquill churchyard
190	Toberclare	Tubberclair; Toberclair; Toberclare; Tubberclare Church; St. Mary's RC Chapel
191	Townparks (Castepollard)	Castlepollard; St. Michael's RC Church, Church Street, C19th. Note St Michael's Cemetery is further along road out of town on the left
192	Townparks (Castepollard)	Castlepollard ; St Michael's Col Church, The Square

- 193 Townparks (Castepollard) Castlepollard; Kilfree; Killafree ruined church, Church Lane
- 194 Tristernagh Templecross Church, Tristernagh; Armorial Plaque
- 195 Tristernagh Demesne Augustinian Abbey
- 196 Tuitestown (Moyasheal ... By.) Kenny Church (ruined)
- 197 Turbotstown Coole, St Marys RC Church
- 198 Tyfarnham Tyfarnham Churchyard
- 199 Tyrellspass St. Sinian's Tyrellspass C of I, Tyrell's Pass
- 200 Ushnagh Hill Ushnagh Hill archaeological site
- 201 Walshestown North & Slanemore Walshestown (new); 'Mountain Chapel' OS map (sic?); Note graveyard extends into Slane More td.
- 202 Whitewell (Kilbride) Kilbride (Dunbode Est); Kilbride-Pace? Kilbride-Pilate? Note: one graveslab moved to Kilbride townland just outside graveyard
- 203 Williamstown (Rochford) Killulagh new graveyard; St. John the Baptist RC Church; St. Livinus; St. Livinus

Reference

O'Brien, C. (2011) *Guidance for the Care, Conservation and Recording of Historic Graveyards*. The Heritage Council. 2nd Ed. (reproduced from *The Care and Conservation of Graveyards, 1995*, Office of Public Works).

The screenshot shows a Google Fusion Tables interface with two data cards. Each card lists details for a specific graveyard survey entry, including a reference number (REF), townland name, names (including misspellings), class (RMP), and various status indicators like 'Yes' or 'No' for different attributes. The cards are for 'Westmeath Graveyard Survey - Final 7 - Excel'.

Right, Google Fusion Tables card view of data. Below, extract of MS Excel spreadsheet of data

The screenshot displays an Excel spreadsheet with a grid of data. The columns are labeled: REF, Townland, Names (including misspellings), Class, RMP, and various status indicators (Yes/No) for attributes like 'Paper sources', 'Online', 'Locate', 'Barony', 'Civil P.', 'COMP.', 'APPRA.', 'DATE', 'ADEC', 'AD', 'AGE', 'UNK', 'RPS', and 'Notes'. The rows contain detailed information for numerous graveyard entries across different townlands in Westmeath.

REF	Townland	Names	RMP	NIAH	RPS	Map	Photo	Ill.	Inscribed	Paper sources	Online
1	Abbeyland	Multyfarnham Friary, Abbey, Convent; St Francis Church	WM006-058----	15304014	006-013				YES	under MULTYFARNHAM, in O Conlain, M 2002 A Partial List of some Memorials in Westmeath Churchyards, 13 vol set (possibly); O Gibeallain, P. (1984) Multyfarnham Abbey: Monuments and Memories. Multyfarnham.	
2	Adamstown (Moyca	Kilbride church	WM032-004001-						YES	Under KILBRIDE, in O Conlain, M 2002 A Partial List of some Memorials in Westmeath Churchyards, 13 vol set; possibly also in Journal of the Association for the Preservation of the Memorials of the Dead in Ireland Vol 9, 556-7 however Connell (2012, 121) records the graveyard of 'Kilbride, in Moyliker civil parish', which does not exist but may refer to this one	
3	Aghanargit	Moate; St. Joseph's Convent of Mercy, Sisters of Mercy; Station Road, Moate;	N/a	15317028	030-020				NO	None	
4	Anneville or Rathdu	Anvil; Moylisker Graveyard (old); Monument	N/a						YES	Under RATHDUFF in O Conlain, M 2002 A Partial List of some Memorials in Westmeath Churchyards, 13 vol set, page 187-202, no ill or map; under RATHDUFF In O Conlain, M. (2010) Inscriptions in Westmeath Churchyards, Part Two, Westmeath Archaeological and Historical Society. Confirmed by O Connell 2012, 124, who notes these references are from Moylisker parish	
5	Archerstown	Archerstown	WM008-045001-						YES	O Conlain, M 2002 A Partial List of some Memorials in Westmeath Churchyards, 13 vol set	
6	Ardnacraney North	Ardnacraney/Tang; WM-ACNY	WM016-019001-			YES	YES		YES	Journal of the Association for the Preservation of the Memorials of the Dead in Ireland Vol 4, 489	<a href="http://historicgraves.com/graveyard/ardnacraney-north/wm-acny">http://historicgraves.com/graveyard/ardnacraney-north/wm-acny</a>
7	Ardnaglew	Ardnaglew	WM038-029001-						NO	None	
8	Ardnagross	Burial Ground	WM001-056----						NO	None	
9	Ardnurcher	older graveyard to north of horseleap no. 16; Horseleap	WM031-098001-						YES	O Conlain, M 2002 A Partial List of some Memorials in Westmeath Churchyards, 13 vol set; Journal of the Association for the Preservation of the Memorials of the Dead in Ireland Vol 6 (1904) 608-9; Vol 7 (1907) 121, 191; Vol 8 (1910) 642-4; Vol 9, 170-3; Vol 11 (1921-26) 236-7, 332-3	<a href="http://www.igp-web.com/IGPArchives/ire/westmeath/cemeteries/ardnurcher.txt">http://www.igp-web.com/IGPArchives/ire/westmeath/cemeteries/ardnurcher.txt</a>
10	Ardnurcher	Horseleap (Col) St David's	N/a	15403129	031-023				NO	None	
11	Athlone	Franciscan Abbey, Coosan Road, Abbey Road, Athlone	WM029-042092-	15004034	RPS 088 Athlone		SOME		YES	Ryan, H. (1994) An Old Abbey Remembered: The Abbey Graveyard, Athlone; Ryan, H. (1987) Athlone Abbey Graveyard, Mullingar; Minor record in O'Brien, G. (1989) St. Mary's Parish, Athlone: A History. St. Mel's Diocesan Trust, Longford. Chapter 23 pp 202-206 notes on graveyards; Journal of the Association for the Preservation of the Memorials of the Dead in Ireland Vol 4 (1900), 493-4; Vol 5, 481-4; Vol 6 160-2; Vol 11 323-5	
12	Athlone	St Mary's Athlone (Col) 37-41 Church Street	WM029-042022-	15009330	RPS 211 Athlone	YES	YES		YES	Fitzpatrick, L. (nd) An Account of the Graveyard and Gravestone Inscriptions: St. Mary's Church of Ireland, Athlone; Journal of the Association for the Preservation of the Memorials of the Dead in Ireland Vol 2, 227-32, 374-88, 557-61; Vol 3, 170-3, 346-9, 521-3; Vol 4, 135-7; Vol. 5 272, 485; Vol 6, 162-3; Burgess Papers NLI p. 5309, see p.x: J.S. Jolly 1896, Marsh's Library, Ms. Z3.3.1; refer also minor record in O'Brien, G. (1989) St. Mary's Parish, Athlone: A History. St. Mel's Diocesan Trust, Longford. Chapter 23 pp 202-206 notes on graveyards	Athlone Memorials from various sources, transcribed by Jacque Liddiard (note: beginning definately st. mary's athlone but unclear if other memorials are also recorded) <a href="http://www.igp-web.com/IGPArchives/ire/westmeath/cemeteries/athlone.txt">http://www.igp-web.com/IGPArchives/ire/westmeath/cemeteries/athlone.txt</a> ; <a href="http://www.igp-web.com/IGPArchives/ire/westmeath/cemeteries/athlone-cont.txt">http://www.igp-web.com/IGPArchives/ire/westmeath/cemeteries/athlone-cont.txt</a> ; <a href="http://www.igp-web.com/IGPArchives/ire/westmeath/cemeteries/athlone-page170-173.txt">http://www.igp-web.com/IGPArchives/ire/westmeath/cemeteries/athlone-page170-173.txt</a> ; <a href="http://www.igp-web.com/IGPArchives/ire/westmeath/cemeteries/athlone-page384-388.txt">http://www.igp-web.com/IGPArchives/ire/westmeath/cemeteries/athlone-page384-388.txt</a> ; <a href="http://www.igp-web.com/IGPArchives/ire/westmeath/cemeteries/athlone-page557-561.txt">http://www.igp-web.com/IGPArchives/ire/westmeath/cemeteries/athlone-page557-561.txt</a>
13	Athlone and Bigmea	Obelisk; Burial Site Athlone (cemetery lane; rear of st peter's church)	N/a	15000396	RPS 072 Athlone				NO	None	

REF	Townland	Names	RMP	NIAH	RPS	Map	Photo	Ill.	Inscribed	Paper sources	Online
14	Athlone and Bigmea	Armorial plaques and cross slabs currently in Athlone Castle Museum & National Museum of Ireland, some of which have grave inscriptions	WM029-042043- & many others				YES		YES	Bradley, J., Halpin, A., and King, H. 1985 Urban archaeological survey - county Westmeath. Unpublished report commissioned by the Office of Public Works, Dublin; English, N. W. 1974-5 The Burgess papers of Athlone. Journal of the Old Athlone Society 1 (4), 254-62; Fanning, T. and O hEailidhe, P. 1980 Some cross-inscribed slabs from the Irish Midlands. In H. Murtagh (ed.), Irish Midland studies: essays in commemoration of N.W. English, 5-23. Athlone. Old Athlone Society; RMP Files.	<a href="https://www.archaeology.ie/archaeological-survey-ireland">https://www.archaeology.ie/archaeological-survey-ireland</a>
15	Athlone and Bigmea	Convent cemetery athlone, Deer Park Road, Lyster Street, Athlone, County Westmeath	N/a	15000398	RPS 073 Athlone				NO	None	
16	Ballindurrow	Multyfarnham St Andrew's Church in ruins, old cemetery and note modern extension to east of old cemetery	WM006-061001-				SOME		YES	Under Multyfarnham, St. Andrew's, in O Conlain, M. (2010) Inscriptions in Westmeath Churchyards, Part Two, Westmeath Archaeological and Historical Society; Journal of the Association for the Preservation of the Memorials of the Dead in Ireland Vol 1, 245, 512-3; Wallace, P (1984) Multyfarnham Parish History, Multyfarnham, 201-202. (note the JAPMD and Wallace references are combined for St. Andrews and the Rock Graveyard, as per Connell 2012). Possibly also under 'Multifernan' in JAPMDI Vol 2, 232-3; Vol 4, 488-9.	<a href="http://www.igp-web.com/IGPArchives/ire/westmeath/photos/tombstones/1headstones/multyfarnham.txt">http://www.igp-web.com/IGPArchives/ire/westmeath/photos/tombstones/1headstones/multyfarnham.txt</a>
17	Ballinkeeny or Moss	Burial Ground	WM024-108----						NO	None	
18	Ballybrennan	Burial Ground	WM032-113----						NO	None	
19	Ballybrickoge	Rosemount; Ballybricoge; Kilcummragh; St Thomas RC Church	N/a	15403103	031-002				NO	None	
20	Ballycahillroe	Ballybrickoge graveyard	WM036-013003-						NO	None	
21	Ballykilmore	Tyrrellspass Modern Cemetery	N/a						NO	None	
22	Ballymore	Ballymore RC Church of the Holy Redeemer; Church of the Most Holy Redeemer	N/a	15315003	024-002				NO	None	
23	Ballymore	St. Owen's Col Church; old Church of Ireland; Ballymore; Site of medieval Church of St. Mary; Magan Family Mausoleum	WM024-005001-	15315010	024-008				YES	O Conlain, M 2002 A Partial List of some Memorials in Westmeath Churchyards, 13 vol set; Journal of the Association for the Preservation of the Memorials of the Dead in Ireland, Vol 8, 443-8; Vol 13 (1910). See also RMP Files in Custom House for additional information on Mausoleum in graveyard WM024-005002-; Sheehan, J. (1996) Benath the Shadow of Uisneach: Ballymore and Boher, 421-64.	
24	Ballymorin	Almoritia Col St Nicholas	WM017-100001-	15401725	017-022				YES	O Conlain, M. (2010) Inscriptions in Westmeath Churchyards, Part Two, Westmeath Archaeological and Historical Society.; Journal of the Association for the Preservation of the Memorials of the Dead in Ireland Vol 2. 680-2;	
25	Ballynacliffy	Coolaleena	WM015-013----						NO	None	
26	Ballynacor	Bedlow/Bellew Armorial Plaque, Ballynacore bridge; Ballinacore Bridge	WM013-063001-				YES		YES	In RMP Files inscription and photo; Journal of the Association for the Preservation of the Memorials of the Dead in Ireland Vol 1, 245; Vol 2 174; Vol 3 253.	
27	Balrath (Moycashel)	Balrath, Ballinagore; Toorlisnamore	WM032-102----	15403204	032-041				YES	O Conlain, M. (2010) Inscriptions in Westmeath Churchyards, Part Two, Westmeath Archaeological and Historical Society.	<a href="https://www.archaeology.ie/archaeological-survey-ireland">https://www.archaeology.ie/archaeological-survey-ireland</a>
28	Balreagh	Balreagh; Balreadh	WM013-038001-						YES	O Conlain, M 2002 A Partial List of some Memorials in Westmeath Churchyards, 13 vol set	
29	Balreth South	Southill (Private)	N/a						NO	None	
30	Baronstown Demes	Kilbixy Church; Leper Hospital; Malone Mausoleum; St. Bigseach's Col Church	WM011-040005-	15401103	011-023	YES			YES	Under Kilbixy, in O Conlain, M 2002 A Partial List of some Memorials in Westmeath Churchyards, 13 vol set; Westmeath Genealogy Project (1994) Kilbixy Graveyard Survey, Kilbixy, Ballinacargy ; Journal of the Association for the Preservation of the Memorials of the Dead in Ireland Vol 5. 114-9: 12. 124	
31	Barradrum	Streete; Street; St. Mary's Col; St. James Col	WM002-028001-	15400201	002-001		SOME		YES	Under STREETE, in O Conlain, M 2002 A Partial List of some Memorials in Westmeath Churchyards, 13 vol set; Ffolliott, R. (1969) Some Monumental Inscriptions from Street, in Rioc na Mide Vol IV, No. 3, 28-9.	<a href="http://www.igp-web.com/IGPArchives/ire/westmeath/photos/tombstones/1headstones/st-james-coi.htm">http://www.igp-web.com/IGPArchives/ire/westmeath/photos/tombstones/1headstones/st-james-coi.htm</a>

REF	Townland	Names	RMP	NIAH	RPS	Map	Photo	Ill.	Inscribed	Paper sources	Online
32	Boherquill	Boherquill (old); St. Mary's RC Chapel; note Boherquill (new) graveyard to northeast	N/a	15400214	002-014		SOME		YES	O Conlain, M 2002 A Partial List of some Memorials in Westmeath Churchyards, 13 vol set	<a href="http://www.igp-web.com/IGPArchives/ire/westmeath/photos/tombstones/westmeath-boherquill/index.html">http://www.igp-web.com/IGPArchives/ire/westmeath/photos/tombstones/westmeath-boherquill/index.html</a> ; and also under STREETE (a typo!) at <a href="http://www.igp-web.com/IGPArchives/ire/westmeath/photos/tombstones/1headstones/streete.txt">http://www.igp-web.com/IGPArchives/ire/westmeath/photos/tombstones/1headstones/streete.txt</a>
33	Bracklin	Mausaleum 19th century; Bracklyn; Kilkenna; Fetherston-	N/a	15401406	014-020				YES	Under KILKENNA, in O Conlain, M 2002 A Partial List of some Memorials in Westmeath Churchyards, 13 vol set	
34	Bunown	Bunowen	WM022-031003-						YES	O Conlain, M 2002 A Partial List of some Memorials in Westmeath Churchyards, 13 vol set; Journal of the Association for the Preservation of the Memorials of the Dead in Ireland Vol 4 (1900), 498-90	
35	Carlanstown	Burial Ground at Carlanstown	WM001-053----						NO	None	
36	Carrick (Fartullagh B	Carrick	WM026-083001-						YES	O Conlain, M 2002 A Partial List of some Memorials in Westmeath Churchyards, 13 vol set; Journal of the Association for the Preservation of the Memorials of the Dead in Ireland Vol 9 (1913-6) 555-6	
37	Carrick (Kilkenny We	Relicnastia	WM016-025----						NO	None	
38	Carrick (Kilkenny We	Burial Ground at Carrick	WM016-024001-						NO	None	
39	Cartenstown	Burial Ground at Cartonstown	WM013-064----						NO	None	
40	Cartroncoragh	Drumraney (old); St. Enan's Monastery; Col	WM023-040001-			YES	YES		YES	O Conlain, M 2002 A Partial List of some Memorials in Westmeath Churchyards, 13 vol set ; O Conlain, M. (2010) Inscriptions in Westmeath Churchyards, Part Two, Westmeath Archaeological and Historical Society.O Conlain, M 2002 A Partial List of some Memorials in Westmeath Churchyards, 13 vol set; Journal of the Association for the Preservation of the Memorials of the Dead in Ireland, Vol 4 (1900) 489; Vol 12 (1926) 331, 122, 2, 561, 2	<a href="http://drumraneyheritage.com/home/history-of-the-old-graveyard/">http://drumraneyheritage.com/home/history-of-the-old-graveyard/</a> Excellent resource including map and searchable inscriptions, with photographs.
41	Cartronkeel (Clonlon	Moate Quaker Cemetery; Friends Burial Ground	WM030-113----	15317050	030-040				YES	Cox, L. (1981) Moate, Co. Westmeath, Alfa Print, Athlone. appendix ix, p 230; Under MOATE (FRIENDS) in O Conlain, M 2002 A Partial List of some Memorials in Westmeath Churchyards, 13 vol set; Cox, L. Sheehan, J. & Tinsley, B. (1985) Moate Quaker Cemetery, Meath Historical Society, Occ. Paper No. 2, Oct 1985, Reprinted July 2000; Journal of the Association for the Preservation of the Memorials of the Dead in Ireland Vol 11 337-8	
42	Castlelost	Castlelost	WM033-031001-						YES	O Conlain, M 2002 A Partial List of some Memorials in Westmeath Churchyards, 13 vol set; Journal of the Association for the Preservation of the Memorials of the Dead in Ireland Vol 9, 382-4	<a href="http://www.igp-web.com/IGPArchives/ire/westmeath/cemeteries/mullingar.htm">http://www.igp-web.com/IGPArchives/ire/westmeath/cemeteries/mullingar.htm</a>
43	Castlelost	Rochfortbridge; Convent of	N/a	15320009	033-007				NO	None	
44	Castletown	Castletown-geoghegan; St. Michael's Graveyard; Ballina Road	N/a	15318001	032-001				YES	Possibly recorded (could also be Abbey) in O Conlain, M 2002 A Partial List of some Memorials in Westmeath Churchyards, 13 vol set; O Conlain, M. (1996) Castlepollard Memorials: Some Memorials from Castlepollard Parish.	
45	Castletown (Moycas	Castletown-geoghegan Abbey; Main Street	WM032-014002-	15318011	032-010				YES	Journal of the Association for the Preservation of the Memorials of the Dead in Ireland, Vol 1 (1888) 513-4; Vol 2 (1893) 371-3; Vol 4 (1900) 490; Vol 6 (1904-6) 163-614; O'Conlain (2009) says it is iscribed by Garvin, J (1994) however this was not checked or found; O Conlain, M 2002 A Partial List of some Memorials in Westmeath Churchyards, 13 vol set; O Conlain, M. (1996) Castlepollard Memorials: Some Memorials from Castlepollard Parish	
46	Castletown Upp	Castletown; Castletown Lower; St Michael's RC Church	N/a	15400107	001-014				YES	Possibly Under Castletown, in in O Conlain, M. (1996) Castlepollard Memorials: Some Memorials from Castlepollard Parish.	
47	Castletowndelvin	Clondone; Union Workhouse graveyard, delvin	N/a	15308016	014-014				NO	None	
48	Castletowndelvin	Delvin; Church of the Assumption	N/a	15308006	014-004		YES		YES	ONLINE	<a href="http://www.igp-web.com/IGPArchives/ire/westmeath/photos/tombstones/westmeath-delvin-church/index.html">http://www.igp-web.com/IGPArchives/ire/westmeath/photos/tombstones/westmeath-delvin-church/index.html</a> ; and <a href="http://www.igp-web.com/IGPArchives/ire/westmeath/photos/tombstones/1headstones/carrick.txt">http://www.igp-web.com/IGPArchives/ire/westmeath/photos/tombstones/1headstones/carrick.txt</a> ; and then cemetery seperately recorded in 3 parts below that. Excellent record



REF	Townland	Names	RMP	NIAH	RPS	Map	Photo	Ill.	Inscribed	Paper sources	Online
49	Castletowndelvin	Delvin; St Mary's Col	WM014-003001-	15308008	014-006				YES	Under DELVIN in O Conlain, M 2002 A Partial List of some Memorials in Westmeath Churchyards, 13 vol set; Moore, B. & Kenny, M (1980) Headstones in St. Mary's Churchyard, Delvin; Irish Ancestor 14(1) (1982), 39-57; Journal of the Association for the Preservation of the Memorials of the Dead in Ireland Vol 7, 682.	Incomplete at <a href="http://www.from-ireland.net/free-gravestone-records-westmeath/">http://www.from-ireland.net/free-gravestone-records-westmeath/</a>
50	Catherinestown	Kilronan Grave Yard (old) with new extension to south	WM026-037003-						YES	Under Kilronan, in O Conlain, M 2002 A Partial List of some Memorials in Westmeath Churchyards, 13 vol set; Under Kilronan in O Conlain, M. (2010) Inscriptions in Westmeath Churchyards, Part Two, Westmeath Archaeological and Historical Society; Under Kilronan (New), in O Conlain, M. (2010) Inscriptions in Westmeath Churchyards, Part Two, Westmeath Archaeological and Historical Society.	
51	Church Island (Lough Owel)	Church Island (Lough Owel)	WM012-167001-						NO	None	
52	Churchtown (Moygcugh)	Churchtown/Ballynacargy; Emper Graveyard, Ballynacarrigy, County Westmeath' CHURCHTOWN td.	WM010-012001-	15401003	010-019				YES	O Conlain, M. (2010) Inscriptions in Westmeath Churchyards, Part Two, Westmeath Archaeological and Historical Society.	
53	Churchtown (Rathcooney)	Churchtown Col Church; Ballinea	WM025-011001-	15402511	025-010				YES	O Conlain, M. (2010) Inscriptions in Westmeath Churchyards, Part Two, Westmeath Archaeological and Historical Society.	
54	Clogher	St. Mary's, Church of the Immaculate Conception, Tang. St. Catherine's RC Church; WM-MARY		15401604	016-002				NO	Anon (nd) Travels Through Tang, Westmeath, Ireland. Muintir Tang, Tidy Towns Committee. Vers. 2.	<a href="http://historicgraves.com/graveyard/st-mary-s-church-immaculate-conception/wm-mary-Inscriptions-not-up-on-website-as-of-06/07/2016-but-pending.">http://historicgraves.com/graveyard/st-mary-s-church-immaculate-conception/wm-mary-Inscriptions-not-up-on-website-as-of-06/07/2016-but-pending.</a>
55	Clonaltra West	Clonaltra West (Baulin Stone)	WM036-042006-						NO	None	
56	Clonarney	Clonarney	WM009-034003-						YES	O Conlain, M 2002 A Partial List of some Memorials in Westmeath Churchyards, 13 vol set	
57	Clonfad (Fartullagh)	Clonfad (Dalystown)	WM032-089001-						YES	O Conlain, M 2002 A Partial List of some Memorials in Westmeath Churchyards, 13 vol set; Journal of the Association for the Preservation of the Memorials of the Dead in Ireland Vol 10 (1918)	
58	Clonkeen (Kilkenny)	Temple Valley (old); Templevalley; WM-TVLY; Clonkeen; note new extension	WM016-004001-			YES	YES		YES	O Conlain, M. (2010) Inscriptions in Westmeath Churchyards, Part Two, Westmeath Archaeological and Historical Society.	<a href="http://historicgraves.com/graveyard/templevalley/wm-tvly">http://historicgraves.com/graveyard/templevalley/wm-tvly</a>
59	Clonlost	Clonlost	WM020-038001-						YES	O Conlain, M 2002 A Partial List of some Memorials in Westmeath Churchyards, 13 vol set; Journal of the Association for the Preservation of the Memorials of the Dead in Ireland, Vol 1 (1888), 245; Vol 11 (1921-5) 476-8; Vol 12, 558-61	
60	Clonmellon	Clonmellon , St. John's (Col) Church	N/a	15306011	009-011		YES		YES	O Conlain, M 2002 A Partial List of some Memorials in Westmeath Churchyards, 13 vol set	<a href="http://www.igp-web.com/IGPArchives/ire/westmeath/photos/to-mbstones/1headstones/clonmellon.htm">http://www.igp-web.com/IGPArchives/ire/westmeath/photos/to-mbstones/1headstones/clonmellon.htm</a> ; and <a href="http://www.igp-web.com/IGPArchives/ire/westmeath/photos/to-mbstones/1headstones/clonmellon-int.htm">http://www.igp-web.com/IGPArchives/ire/westmeath/photos/to-mbstones/1headstones/clonmellon-int.htm</a> ; plus photos of both
61	Cloonbonny	Cloonbonny; Clonbonny	WM029-035001-						NO	None	
62	Collegeland	Lisahearin	WM029-023----						NO	None	
63	Collinstown	Collinstown, St. Feighin's Col	N/a	15400801	008-016				YES	O Conlain, M 2002 A Partial List of some Memorials in Westmeath Churchyards, 13 vol set; O Conlain, M. (2010) Inscriptions in Westmeath Churchyards, Part Two, Westmeath Archaeological and Historical Society; Journal of the Association for the Preservation of the Memorials of the Dead in Ireland Vol 5 (1901) 273	
64	Collinstown	Collinstown St Mary's RC	N/a	15400802	008-017				NO	None	
65	Coolamber	O'Reilly Private Burial Ground; Black	WM002-037----	15400217	002-017				YES	Anon. 1895 County Longford, Coolamber. Journal of the Association for the Preservation of the Memorials of the Dead in Ireland. Vol. 3, 106; Vol 10, 247; O Conlain, M 2002 A Partial List of some Memorials in Westmeath Churchyards, 13 vol set	
66	Coosan	Coosan; St. Kieran's Cemetery (modern)	N/a				SOME		YES	Minor recording in O'Brien, G. (1989) St. Mary's Parish, Athlone: A History. St. Mel's Diocesan Trust, Longford. Chapter 23 pp 202-206 notes on graveyards; Register of Interments 1968-2005. Mf.. (WL).	Incomplete at <a href="http://www.igp-web.com/IGPArchives/ire/westmeath/photos/to-mbstones/1headstones/coosan.htm">http://www.igp-web.com/IGPArchives/ire/westmeath/photos/to-mbstones/1headstones/coosan.htm</a>

REF	Townland	Names	RMP	NIAH	RPS	Map	Photo	Ill.	Inscribed	Paper sources	Online
67	Corbetstown	Corbetstown; Corbettstown; Scarden	WM020-049001-						YES	Under SCARDEN, in O Conlain, M 2002 A Partial List of some Memorials in Westmeath Churchyards, 13 vol set	
68	Cornaher	Christ Church C of I,	N/a	15403812	038-067				NO	None	
69	Cornamagh	Cornamagh Modern Graveyard	N/a						YES	Minor recording in O'Brien, G. (1989) St. Mary's Parish, Athlone: A History. St. Mel's Diocesan Trust, Longford. Chapter 23 pp 202-206 notes on graveyards; Register of Interments 1871-2005. Mf., (WL): 1871-1901. NLI, p. 5309. BP.	Incomplete at <a href="http://www.interment.net/data/ireland/westmeath/cornamagh/index.htm">http://www.interment.net/data/ireland/westmeath/cornamagh/index.htm</a>
70	Crosserdree	Crosserdree	WM013-053001-						NO	None	
71	Croughal	Croughal	WM025-005006-						NO	None	
72	Crowinstown Great	Crowenstown	WM014-009----				YES		YES	O Conlain, M 2002 A Partial List of some Memorials in Westmeath Churchyards, 13 vol set	<a href="http://www.igp-web.com/IGPArchives/ire/westmeath/photos/tombstones/1headstones/crowinstown.txt">http://www.igp-web.com/IGPArchives/ire/westmeath/photos/tombstones/1headstones/crowinstown.txt</a> and photos at <a href="http://www.igp-web.com/IGPArchives/ire/westmeath/photos/tombstones/crowinstown/index.html">http://www.igp-web.com/IGPArchives/ire/westmeath/photos/tombstones/crowinstown/index.html</a>
73	Culleen More	Levington; Kilbride; Kilbreeda; St. Bridget's Well	WM019-036----						YES	Under Kilbreeda, in O Conlain, M 2002 A Partial List of some Memorials in Westmeath Churchyards, 13 vol set	
74	Drumraney	Cartoncoragh; Drumraney (new graveyard); St Mary's RC Church	N/a	15402304	023-002				NO	None	
75	Dunegan	Dunegan Modern Graveyard; Clonrelick	N/a						NO	None	
76	Dysart (Delvin By.)	Dysert Tola	WM013-030001-						NO	None	
77	Dysart (Moyashel ...)	Dysart; Glebe Church	WM025-110004-						YES	O Conlain, M 2002 A Partial List of some Memorials in Westmeath Churchyards, 13 vol set	
78	Edmondstown (Farb)	Corbally	WM020-054001-						NO	None	
79	Enniscoffey rr Caran	Enniscoffey	WM026-100003-						YES	O Conlain, M. (2010) Inscriptions in Westmeath Churchyards, Part Two, Westmeath Archaeological and Historical Society.	
80	Fassagh	Fassagh	WM030-087----						NO	None	
81	Faughalstown	Faughalstown (Whitehall?)	WM007-045001-						YES	O Conlain, M. (1998) Memorials in Mayne and Faughalstown, Mayne Heritage Association	
82	Fearmore (Moygois)	St. Mary's RC Church, Coole	N/a	15400333	003-039				YES	O Conlain, M. (1998) Memorials in Mayne and Faughalstown, Mayne Heritage Association;	
83	Finnea	Nugent Armorial Plaque, Finnea Bridge	WM001-052001-				YES		YES	Manning, C. 1997 The Bridge of Finnea and the Man Who Built It. Archaeology Ireland, 11, 1, 29-31. Wordwell.	<a href="https://www.archaeology.ie/archaeological-survey-ireland">https://www.archaeology.ie/archaeological-survey-ireland</a>
84	Finnea	Myles the Slasher Monument, Finnea/Finea	N/a	15301006	001-004				YES	Myles the Slasher monument, in O Conlain, M. (1996) Castlepollard Memorials: Some Memorials from Castlepollard Parish.	
85	Finnea	St. Mary's Church, Finea; Finnea; Our Lady of the Angels; Carrick	N/a	15301010	001-008		SOME		YES	St. Mary's Church, in O Conlain, M. (1996) Castlepollard Memorials: Some Memorials from Castlepollard Parish.	Under Carrick in <a href="http://www.igp-web.com/IGPArchives/ire/westmeath/photos/tombstones/1headstones/carrick.txt">http://www.igp-web.com/IGPArchives/ire/westmeath/photos/tombstones/1headstones/carrick.txt</a> ; possibly also recorded under FINEA at <a href="http://www.igp-web.com/IGPArchives/ire/westmeath/photos/finneacem242gph.txt">http://www.igp-web.com/IGPArchives/ire/westmeath/photos/finneacem242gph.txt</a>
86	Fore	St Feighin's; St. Fechin's; ruined church (old early med graveyard in north of town)	WM004-035032-						YES	O Conlain, M 2002 A Partial List of some Memorials in Westmeath Churchyards, 13 vol set; Journal of the Association for the Preservation of the Memorials of the Dead in Ireland Vol 1, 508-11; Vol 2 373-4; Vol 4, 133-4, 486-7; Vol 6 410.	<a href="http://www.interment.net/data/ireland/westmeath/oldfechin/fechins.htm">http://www.interment.net/data/ireland/westmeath/oldfechin/fechins.htm</a> ; <a href="http://www.igp-web.com/IGPArchives/ire/westmeath/cemeteries/st-feichin-old.txt">http://www.igp-web.com/IGPArchives/ire/westmeath/cemeteries/st-feichin-old.txt</a>
87	Fore	St. Mary's; St Feighin's RC (Church) graveyard of WM008; new graveyard extension	WM008-097014-	15400803	008-018				YES	O Conlain, M 2002 A Partial List of some Memorials in Westmeath Churchyards, 13 vol set	Incomplete at <a href="http://www.interment.net/data/ireland/westmeath/newfechin/newfechin.htm">http://www.interment.net/data/ireland/westmeath/newfechin/newfechin.htm</a> ; <a href="http://www.igp-web.com/IGPArchives/ire/westmeath/cemeteries/st-feichin-new.txt">http://www.igp-web.com/IGPArchives/ire/westmeath/cemeteries/st-feichin-new.txt</a>
88	Foyran	Foyran	WM001-042001-						YES	O Conlain, M. (1996) Castlepollard Memorials: Some Memorials from Castlepollard Parish.	
89	Gallstown	Gaulstown	WM033-072001-						YES	O Conlain, M 2002 A Partial List of some Memorials in Westmeath Churchyards, 13 vol set	

REF	Townland	Names	RMP	NIAH	RPS	Map	Photo	Ill.	Inscribed	Paper sources	Online
90	Glebe (Corkaree By.)	St. Munna's; Taughmon Castle; Taghmon	WM012-076001-	15401238	012-031				NO	None	
91	Glebe (Farbill By.)	Killucan; St Etchan's Col; Rathwire; 'Ecthens' (sic, WM)	WM020-128001-	15312011	020-011				YES	Under Killucan, St. Etchen's in O Conlain, M. (2010) Inscriptions in Westmeath Churchyards, Part Two, Westmeath Archaeological and Historical Society; O Conlain, M. & Cotter, J. (2008) Index to Burials at St. Etchen's Graveyard, Killucan.	
92	Glenidan	Excavation at site of Priory at Glenidan	WM004-037----						NO	Cahill, M. and Sikora, M. (eds) 2011 Breaking ground, finding graves - reports on the excavations of burials by the National Museum of Ireland, 1927-2006, 2 vols. Dublin. Wordwell Ltd. in association with the National Museum of Ireland; Refer NMS RMP file also for more information: refer NMI Topo file	
93	Gneevestown	Loughnavally; Loughnavally; Loughnavally; Togherstown; RC Chapel; Church of the Assumption; note church is across the road from graveyard	WM025-034----	15402520	025-018				YES	Under LOUGHNAVALLY, St. Etchen's in O Conlain, M. (2010) Inscriptions in Westmeath Churchyards, Part Two, Westmeath Archaeological and Historical Society.	
94	Grange Beg	Kilcolumb; Raharney; Grange Beg; Kilcolm Church	WM021-008001-	15313007	021-005				YES	Under Kilcolumb, in O Conlain, M 2002 A Partial List of some Memorials in Westmeath Churchyards, 13 vol set; Swords, S. (2010) Headstones Kilcolumb Graveyard	<a href="http://www.iggp-web.com/IGPArchives/ire/westmeath/cemeteries/kilcolumb.txt">http://www.iggp-web.com/IGPArchives/ire/westmeath/cemeteries/kilcolumb.txt</a>
95	Griffinstown	Griffinstown graveyard	WM027-061001-			YES			YES	O Conlain, M 2002 A Partial List of some Memorials in Westmeath Churchyards, 13 vol set	
96	Griffinstown	Excavation at site of ringfort at Griffinstown	WM025-155----						NO	Cahill, M. and Sikora, M. (eds) 2011 Breaking ground, finding graves - reports on the excavations of burials by the National Museum of Ireland, 1927-2006, 2 vols. Dublin. Wordwell Ltd. in association with the National Museum of Ireland; Refer NMS RMP file also for more information: refer NMI Topo file	
97	Heathland	Wilson's Hospital, Multyfarnham	N/a	15401120	011-039				YES	Under Wilson's Hospital, in O Conlain, M. (2010) Inscriptions in Westmeath Churchyards, Part Two, Westmeath Archaeological and Historical Society.	
98	Heathstown	St. Agnes; RC Church, Coralstown; Correlstown	N/a	15402705	027-020				YES	Under CORALSTOWN, in O Conlain, M. (2010) Inscriptions in Westmeath Churchyards, Part Two, Westmeath Archaeological and Historical Society.	
99	Hopetown	Hopetown	WM018-139001-						YES	O Conlain, M. (2010) Inscriptions in Westmeath Churchyards, Part Two, Westmeath Archaeological and Historical Society.; Small entry in Mullingar Library 'Hopetown Cemetery' - no inscriptions	
100	Inchbofin	Lough Ree; Augustinian Church	WM015-001001- & --005						NO	None	
101	Joanstown	St. Mary's RC Church; Rathowen	N/a	15303008	006-007				YES	Under RATHOWEN (ST MARY), in O Conlain, M 2002 A Partial List of some Memorials in Westmeath Churchyards, 13 vol set	
102	Johnstown	Sonna RC Church, Ballynacargy	N/a	15401827	018-025				NO	None	
103	Joristown Lower	Excavation at possible cemetery site at Joristown Lower	WM020-139----						NO	Cahill, M. and Sikora, M. (eds) 2011 Breaking ground, finding graves - reports on the excavations of burials by the National Museum of Ireland, 1927-2006, 2 vols. Dublin. Wordwell Ltd. in association with the National Museum of Ireland; Refer NMS RMP file also for more information: refer NMI Topo file	
104	Kilbeg	Horseleap SS Peter and Paul's RC church	N/a	15403710	037-004				NO	None	
105	Kilbeggan	Kilbeggan (Cof I) north; St. Becan's; St. Beacan; Church Lane	WM038-017013-			YES	YES		YES	O Conlain, M 2002 A Partial List of some Memorials in Westmeath Churchyards, 13 vol set; Callaghan (2016) St. Becan's Memorial Recording Project; O Conlain, M. (2010) Inscriptions in Westmeath Churchyards, Part Two, Westmeath Archaeological and Historical Society; Journal of the Association for the Preservation of the Memorials of the Dead in Ireland Vol 7, 191-2; 11, 336	
106	Kilbeggan	Kilbeggan (old) southermost, with modern extension; Cistercian Abbey in ruins; Burying Ground; Relic; St. Beacan; St James' Parish	WM038-017002-	15321030	038-028	YES			YES	Flynn, K. (nd) St. James' Parish, Kilbeggan: The Old Graveyard, Relic Cemetery.	
107	Kilbeggan	Convent of Mercy, Dublin Road, Kilbeggan, County Westmeath, kilbeggan td	N/a	15321034	038-032				NO	None	
108	Kilbrennan	Burial Ground at Kilbrennan, the 'chapel field', the 'mass bush'	WM033-073----						NO	RMP Files: 'In 2002 human bone was found during ploughing in a raised area of a field known locally as the 'chapel field'. This was found near the site of a whitethorn 'mass bush' (pers com. J. Carey, Rochfortbridge)'	

REF	Townland	Names	RMP	NIAH	RPS	Map	Photo	Ill.	Inscribed	Paper sources	Online
109	Kilbride	Cooper Mausoleum; Dunboden Demesne	WM033-011----	15403304					YES	Under Dunboden, in O Conlain, M 2002 A Partial List of some Memorials in Westmeath Churchyards, 13 vol set	
110	Kilcleagh	Kilcleagh (old), and extension to the south	WM036-009001-						YES	Cox. L. (1981) Moate, Co. Westmeath, Alfa Print, Athlone, appendix ix, p 232;; Anon (nd) Ballyloughloe/Kilcleage: Inscriptions from 'Memorials of the Dead' (extract in Mullingar Library)	
111	Kilcumny	Drumcree; Kilcumney	WM008-096001-	15305011	008-010				YES	Under Drumcree Church, in O Conlain, M 2002 A Partial List of some Memorials in Westmeath Churchyards, 13 vol set; Journal of the Association for the Preservation of the Memorials of the Dead in Ireland Vol 5, 112-4; Family Vault inscribed in RMP file, Custom House. Dublin 1	Under Drumcree, in <a href="http://www.igp-web.com/IGPArchives/ire/westmeath/cemeteries/drumcree-page112-114.txt">http://www.igp-web.com/IGPArchives/ire/westmeath/cemeteries/drumcree-page112-114.txt</a>
112	Kilcumreragh	Kilcumeragh	WM031-079001-						YES	O Conlain, M 2002 A Partial List of some Memorials in Westmeath Churchyards, 13 vol set; Murry, J. & Sheehan, J. (1995) Rosemount Churches Past and Present, Moate, 86-205; ; Journal of the Association for the Preservation of the Memorials of the Dead in Ireland Vol 8. 637-641	RMP file inscribed in online RMP file at <a href="https://www.archaeology.ie/archaeological-survey-ireland">https://www.archaeology.ie/archaeological-survey-ireland</a>
113	Kilkenny Abbey	Kilkenny West Col Church	WM023-025001-	15402319	023-010				NO	None	
114	Kilkenny West	Burial Ground at Kilkenny West	WM023-082----						YES	O Conlain, M 2002 A Partial List of some Memorials in Westmeath Churchyards, 13 vol set; ; Journal of the Association for the Preservation of the Memorials of the Dead in Ireland Vol 4. 490; Vol 12. 314. 434-5	
115	Killadoughran	Killadoran	WM008-090001-						YES	Under KILLADORAN, in O Conlain, M 2002 A Partial List of some Memorials in Westmeath Churchyards, 13 vol set	
116	Killagh	Killaugh	WM020-025001-						YES	Under KILLAUGH, in O Conlain, M 2002 A Partial List of some Memorials in Westmeath Churchyards, 13 vol set; ; Journal of the Association for the Preservation of the Memorials of the Dead in Ireland Vol 1. 244	
117	Killahugh	Rathconrath; Glascarn	WM018-102001-						YES	Under Rathconrath in O Conlain, M 2002 A Partial List of some Memorials in Westmeath Churchyards, 13 vol set; under RATHCONRATH in O Conlain, M. (2010) Inscriptions in Westmeath Churchyards, Part Two, Westmeath Archaeological and Historical Society; Journal of the Association for the Preservation of the Memorials of the Dead in Ireland Vol 2, 561; Vol 3, 526; Vol 4, 490-3	
118	Killarechurch	Killare; Killare Church	WM024-057001-						YES	Under KILLARE, in O Conlain, M 2002 A Partial List of some Memorials in Westmeath Churchyards, 13 vol set; ; Journal of the Association for the Preservation of the Memorials of the Dead in Ireland Vol 8. 180-1; Vol 12. 562	
119	Killinroan	No graves on this possible ecc. Site	WM030-070001-						NO	None	
120	Killomenaghan	Kilomenaghan; St. Monaghan's; Mianachan	WM035-003001-						YES	Cox. L. (1981) Moate, Co. Westmeath, Alfa Print, Athlone, appendix ix, p 233	
121	Killulagh	Killulagh old graveyard; Mulchanstown; St. Mulchan's	WM013-057001-						YES	Journal of the Association for the Preservation of the Memorials of the Dead in Ireland Vol 2, 374	
122	Killynan (Pratt)	Random discovery of human bones	WM020-140----						YES	No graves; Cahill, M. and Sikora, M. (eds) 2011 Breaking ground, finding graves - reports on the excavations of burials by the National Museum of Ireland, 1927-2006, 2 vols. Dublin. Wordwell Ltd. in association with the National Museum of Ireland.	
123	Kilmacnevan	Kilmacnevan	WM011-115001-						YES	O Conlain, M 2002 A Partial List of some Memorials in Westmeath Churchyards, 13 vol set; O Conlain, M. (2010) Inscriptions in Westmeath Churchyards, Part Two, Westmeath Archaeological and Historical Society.	
124	Kilmaglish	Kilmaglish	WM012-122001-						YES	O Conlain, M 2002 A Partial List of some Memorials in Westmeath Churchyards, 13 vol set; O Conlain, M. (2010) Inscriptions in Westmeath Churchyards, Part Two, Westmeath Archaeological and Historical Society.	
125	Kilmore	Kilmore Graveyard	WM002-015002-						NO	None	
126	Kilnahinch	Monaster	WM030-083----						NO	None	
127	Kilpatrick (Fore By.)	Kilpatrick	WM013-002001-						YES	O Conlain, M 2002 A Partial List of some Memorials in Westmeath Churchyards, 13 vol set; Journal of the Association for the Preservation of the Memorials of the Dead in Ireland Vol 11. 337	
128	Kilpatrick (Moyashe)	Charlesland; Kilpatrick Graveyard, near Kilpatrick	WM025-028001-						NO	None	
129	Kilpatrick (Moyashe)	19th century burial ground	WM019-072----						NO	None	
130	Kiltoom	Kiltoom graveyard	WM007-008001-						NO	None	

REF	Townland	Names	RMP	NIAH	RPS	Map	Photo	Ill.	Inscribed	Paper sources	Online
131	Kinnegad	Main Street, Kinnegad, County Westmeath; kinnegad td St. John the Baptist's Church of Ireland church now	N/a	15316002	027-007				YES	O Conlain, M. (2010) Inscriptions in Westmeath Churchyards, Part Two, Westmeath Archaeological and Historical Society.	
132	Knock Killua	Knock Killua; Knockkillua; Killua Churchyard	WM009-043001-	15400922	009-049				YES	Under KILLUA, in O Conlain, M 2002 A Partial List of some Memorials in Westmeath Churchyards, 13 vol set; French, N. (nd) Killua Churchyard, Clonmellon. County Westmeath Monumnetal Inscriptions	
133	Knockmant	Knockmant	WM027-009002-						YES	O Conlain, M 2002 A Partial List of some Memorials in Westmeath Churchyards, 13 vol set	
134	Laboun	Mount Temple; Ballyloughloe; Holy Trinity Cemetery; Fooran Well	WM030-045----			YES	SOME		YES	Under BALLYLOUGHLOE, in O Conlain, M 2002 A Partial List of some Memorials in Westmeath Churchyards, 13 vol set; Under BALLYLOUGHLOE, in Anon (nd) Ballyloughloe/Kilcleage: Inscriptions from 'Memorials of the Dead' (extract in Mullingar Library); Under BALLYLOUGHLOE, in Journal of the Association for the Preservation of the Memorials of the Dead in Ireland, Vol III (1897) 523; Vol 11 (1921-5), 237-40, 335-6; Vol 12, 124-5. O Conlain (2009) states it is inscribed by Cox, L. (1972) in Irish Ancestor, Vol 2 - however this was not checked. Cox, L. (1972) Monumental Inscriptions from Mount Temple Churchyard, in The Irish Ancestor No. 2., 105-112.	Under Ballyloughloe in <a href="http://www.igp-web.com/IGPArchives/ire/westmeath/photos/tombstones/1headstones/ballyloughloe.htm">http://www.igp-web.com/IGPArchives/ire/westmeath/photos/tombstones/1headstones/ballyloughloe.htm</a>
135	Lackan	Lacken	WM006-037001-						YES	O Conlain, M 2002 A Partial List of some Memorials in Westmeath Churchyards, 13 vol set; Journal of the Association for the Preservation of the Memorials of the Dead in Ireland Vol 12, 314-7; Wallace, P (1984) Multyfarnham Parish History, Multyfarnham, 197	
136	Leny	Leney Col Church; Rathbennett	WM011-028001-	15401116	011-036				YES	Under two entries (LENEY & LENEY CHURCH) O Conlain, M 2002 A Partial List of some Memorials in Westmeath Churchyards, 13 vol set; O Conlain, M. (2010) Inscriptions in Westmeath Churchyards, Part Two, Westmeath Archaeological and Historical Society; Journal of the Association for the Preservation of the Memorials of the Dead in Ireland Vol 11, 337; Wallace, P (1984) Multyfarnham Parish History, Multyfarnham, 197-201.	
137	Lickbla	Lickblae; Lickblea; Lickleblea; Lickblay; Rathcreevagh	WM003-038001-				SOME		YES	O Conlain, M. (1996) Castlepollard Memorials: Some Memorials from Castlepollard Parish; Journal of the Association for the Preservation of the Memorials of the Dead in Ireland Vol 12, 563	<a href="http://www.interment.net/data/ireland/westmeath/lickbla/index.htm">http://www.interment.net/data/ireland/westmeath/lickbla/index.htm</a> ; <a href="http://www.igp-web.com/IGPArchives/ire/westmeath/photos/lickblav243gnh.txt">http://www.igp-web.com/IGPArchives/ire/westmeath/photos/lickblav243gnh.txt</a>
138	Loughstown	St. John's Church, Drumcree; Drumree (sic in O' Conlain)	N/a	15305012	008-011				YES	Under Drumree, in O Conlain, M. (2009) referring to an inscription of the gravestones by the author in 2010; and also under Drumree or Drumcree in Journal of the Association for the Preservation of the Memorials of the Dead in Ireland Vol 5 (1903)	
139	Lynn	Lynn	WM026-003001-			YES			YES	O Conlain, M 2002 A Partial List of some Memorials in Westmeath Churchyards, 13 vol set; Westmeath Genealogy Project (1992) Graveyard Survey Lynn Church (RC), Mullingar; Journal of the Association for the Preservation of the Memorials of the Dead in Ireland Vol 5. 486-9	
140	Lynn	Excavation at site of monastery/castle at Lynn	WM026-002002-						NO	Cahill, M. and Sikora, M. (eds) 2011 Breaking ground, finding graves - reports on the excavations of burials by the National Museum of Ireland, 1927-2006, 2 vols. Dublin. Wordwell Ltd. in association with the National Museum of Ireland; Refer NMS RMP file also for more information: refer NMI Topo file	
141	Marlinstown	Marlinstown (old), and new extension to west of old burying ground	WM019-080----						YES	O Conlain, M. (2010) Inscriptions in Westmeath Churchyards, Part Two, Westmeath Archaeological and Historical Society, 24-29	
142	Mayne	Mayne (St. Nicholas?)	WM003-083002-						YES	O Conlain, M. (1998) Memorials in Mayne and Faughalstown, Mayne Heritage Association; Journal of the Association for the Preservation of the Memorials of the Dead in Ireland Vol 5. 119-120	
143	Meedian	Meedin Parish Church	WM033-040----	15320012	033-010				NO	None	
144	Milltown	Milltown; St Mary's Church	N/a	15401736	017-033				YES	O Conlain, M. (2010) Inscriptions in Westmeath Churchyards, Part Two, Westmeath Archaeological and Historical Society.	
145	Milltown	Whitehall; St. Mary's RC Chapel	N/a	15400711	007-052				NO	None	
146	Milltown (Fartullagh)	Milltownpass; Cemetery SW of town	N/a				SOME		YES	ONLINE	<a href="http://www.igp-web.com/IGPArchives/ire/westmeath/photos/tombstones/1headstones/milltownpass.htm">http://www.igp-web.com/IGPArchives/ire/westmeath/photos/tombstones/1headstones/milltownpass.htm</a>
147	Milltown (Fore By.)	Burial Ground at Milltown	WM007-051----						NO	None	

REF	Townland	Names	RMP	NIAH	RPS	Map	Photo	Ill.	Inscribed	Paper sources	Online
148	Moategranoge	St Mary's Col Church, Main Street Moate	N/a	15317018	030-011		SOME		YES	Under MOATE (Col), in O Conlain, M 2002 A Partial List of some Memorials in Westmeath Churchyards, 13 vol set; Journal of the Association for the Preservation of the Memorials of the Dead in Ireland, Vol 11, 478-483; Cox. L. (1981) Moate, Co. Westmeath. Alfa Print. Athlone. appendix ix. p 231-2.	<a href="http://www.igp-web.com/IGPArchives/ire/westmeath/photos/tombstones/1headstones/moate.htm">http://www.igp-web.com/IGPArchives/ire/westmeath/photos/tombstones/1headstones/moate.htm</a>
149	Moyvoughly	Old School; Moyvoughly	N/a						YES	O Conlain, M. (2010) Inscriptions in Westmeath Churchyards, Part Two, Westmeath Archaeological and Historical Society.	
150	Mullingar	Presbyterian Church, Castle Street, Friars Mill Road, Mullingar; 'Scot's Church'	N/a	15310137	019-130				YES	O Conlain, M. (2010) Inscriptions in Westmeath Churchyards, Part Two, Westmeath Archaeological and Historical Society; O Conlain, M. (2010) Inscriptions in Westmeath Churchyards, Part Two, Westmeath Archaeological and Historical Society	
151	Mullingar	Presentation Convent, next to Cathedral	N/a	15310157	019-148				YES	Under Presentation Convent, O Conlain, M. (2010) Inscriptions in Westmeath Churchyards, Part Two, Westmeath Archaeological and Historical Society; in O Conlain, M. (2010) Inscriptions in Westmeath Churchyards, Part Two, Westmeath Archaeological and Historical Society, under Cathedral Grounds Mullingar according to Connell (2012, 120) but not checked.	
152	Mullingar	Mullingar All Saints; All Saint's; Col former St Mary's Priory; Church Avenue	WM019-089017-	15310114	019-115	YES			YES	O Conlain, M 2002 A Partial List of some Memorials in Westmeath Churchyards, 13 vol set; Westmeath Genealogy Project (1991) Graveyard Survey: All Saints (Col), Mullingar; O Conlain, M. (2010) Inscriptions in Westmeath Churchyards, Part Two, Westmeath Archaeological and Historical Society. Journal of the Association for the Preservation of the Memorials of the Dead in Ireland Vol 9, 385-389; Vol 10, 248	<a href="http://www.igp-web.com/IGPArchives/ire/westmeath/cemeteries/mullingar.htm">http://www.igp-web.com/IGPArchives/ire/westmeath/cemeteries/mullingar.htm</a>
153	Mullingar	Loreto Convent, Longford Road, Mullingar, 20th century	N/a	15310153	019-145				NO	None	
154	Multyfarnham or Fe	Multyfarnham The Rock; Fearbranagh; Rock Cemetery; Donore Road, 1km east of Multyfarnham	N/a				SOME		YES	O Conlain, M. (2010) Inscriptions in Westmeath Churchyards, Part Two, Westmeath Archaeological and Historical Society; Journal of the Association for the Preservation of the Memorials of the Dead in Ireland Vol 1, 245, 512-3; Wallace, P (1984) Multyfarnham Parish History, Multyfarnham, 201-202. (note the JAPMDI and Wallace referces are combined for St. Andrews and the Rock Graveyard, as per Connell 2012). Possibly also under 'Multifernan' in JAPMDI Vol 2, 232-3; Vol 4, 488-9.	<a href="http://www.igp-web.com/IGPArchives/ire/westmeath/photos/tombstones/1headstones/rock01.txt">http://www.igp-web.com/IGPArchives/ire/westmeath/photos/tombstones/1headstones/rock01.txt</a>
155	Newtownlow	Newtownlow; Newtown; Newtown Fertullag; Newtown Fertullagh; Rahinashurock	WM038-012001-	15403801	038-058	YES		YES	YES	O Conlain, M 2002 A Partial List of some Memorials in Westmeath Churchyards, 13 vol set; Flynn, K, Casey, J. & Kelly, M. (nd) Graveyard at Newtownlow, Graveyard Inscriptions; Flynn, K. & Kelly, M. (c. 2000) Newtown (Low) Graveyard, Tyrrellspass; O Conlain, M. (2010) Inscriptions in Westmeath Churchyards, Part Two, Westmeath Archaeological and Historical Society; Journal of the Association for the Preservation of the Memorials of the Dead in Ireland Vol 3, 524-6	
156	Noughaval	Noughaval; WM-NHVL; Tang	WM016-012001-			YES	YES		YES	O Conlain, M 2002 A Partial List of some Memorials in Westmeath Churchyards, 13 vol set; Journal of the Association for the Preservation of the Memorials of the Dead in Ireland Vol 12, 317-9; Vol 4, 489	<a href="http://historicgraves.com/graveyard/noughaval/wm-nhvl">http://historicgraves.com/graveyard/noughaval/wm-nhvl</a>
157	Parsonstown	Taughmon; Taghmon RC Church	N/a	15401234	012-029				YES	Under TAGHMON, in O Conlain, M 2002 A Partial List of some Memorials in Westmeath Churchyards, 13 vol set; Journal of the Association for the Preservation of the Memorials of the Dead in Ireland Vol 12, 126-7	
158	Pass Of Kilbride	Pass of Kilbride	WM034-002003-						YES	O Conlain, M. (2010) Inscriptions in Westmeath Churchyards, Part Two, Westmeath Archaeological and Historical Society.	
159	Piercefield or Temp	Templeoran	WM011-099001-						NO	None	
160	Portlick	Bunown Col Church	N/a	15402214	022-028				NO	None	
161	Portlick	Portlick; Liss	WM022-014----						NO	None	
162	Portloman	Portloman Abbey	WM011-145004-						YES	O Conlain, M 2002 A Partial List of some Memorials in Westmeath Churchyards, 13 vol set	
163	Portnashangan	Portnashangan Abbey; Knockdrin	WM012-086001-						YES	O Conlain, M 2002 A Partial List of some Memorials in Westmeath Churchyards, 13 vol set; O Conlain, M. (2010) Inscriptions in Westmeath Churchyards, Part Two, Westmeath Archaeological and Historical Society; Wallace, P (1984) Multyfarnham Parish History, Multyfarnham, 202.	
164	Raharney	St. Brigid's R.C. chapel	N/a	15313003	020-028				YES	O Conlain, M. (2010) Inscriptions in Westmeath Churchyards, Part Two, Westmeath Archaeological and Historical Society.	
165	Raheen	Alone Alanna; Children's Burial ground in Stuart Griffith's field at Raheen.	WM024-136----						NO	None	

REF	Townland	Names	RMP	NIAH	RPS	Map	Photo	Ill.	Inscribed	Paper sources	Online
166	Rahugh	Rahugh Monastery; St. Hugh's; Rahue	WM038-041001-						YES	O Conlain, M 2002 A Partial List of some Memorials in Westmeath Churchyards, 13 vol set; Bagnall, R. (1995) Headstone Inscriptions of St. Hugh's Cemetery, Rahugh; Journal of the Association for the Preservation of the Memorials of the Dead in Ireland Vol 3, 526-7	
167	Ranalagh	Ss Peter and Paul; St Peters; Barrack Street	N/a	15000012	RPS 006 Athlone				YES	Journal of the Association for the Preservation of the Memorials of the Dead in Ireland Vol 4, 486; Burgess Papers NLI p. 5309, see p.x: J.S. Jolly 1896, Marsh's Library, Ms. Z3.3.1	
168	Rathaspick	Rathaspic; Rathaspick N	WM005-008001-						YES	O Conlain, M 2002 A Partial List of some Memorials in Westmeath Churchyards, 13 vol set	
169	Rathconnell	Rathconnell	WM019-041001-						YES	O Conlain, M. (2010) Inscriptions in Westmeath Churchyards, Part Two, Westmeath Archaeological and Historical Society.	
170	Rathgarve	Rathgarve	WM003-068001-						YES	O Conlain, M. (1996) Castlepollard Memorials: Some Memorials from Castlepollard Parish; Journal of the Association for the Preservation of the Memorials of the Dead in Ireland Vol 5, 274	
171	Rathowen (Rathaspick)	St. Thomas' Church (Col); Rathaspick Parish Church	N/a	15303006	006-005		SOME		YES	O Conlain, M 2002 A Partial List of some Memorials in Westmeath Churchyards, 13 vol set; Journal of the Association for the Preservation of the Memorials of the Dead in Ireland Vol 12, 563-4	<a href="http://www.igp-web.com/IGPArchives/ire/westmeath/photos/tombstones/rathowen-coi/index.html">http://www.igp-web.com/IGPArchives/ire/westmeath/photos/tombstones/rathowen-coi/index.html</a> and <a href="http://www.igp-web.com/IGPArchives/ire/westmeath/photos/tombstones/1headstones/rathowen.txt">http://www.igp-web.com/IGPArchives/ire/westmeath/photos/tombstones/1headstones/rathowen.txt</a>
172	Rathwire Lower	Rathwire St Josephs	N/a	15312031	020-024				YES	O Conlain, M. (2010) Inscriptions in Westmeath Churchyards, Part Two, Westmeath Archaeological and Historical Society.	
173	Rathwire Upper	Killucan Presbyterian Church	N/a	15312019	020-018				YES	Under Killucan Presbyterian Church, in O Conlain, M. (2010) Inscriptions in Westmeath Churchyards, Part Two, Westmeath Archaeological and Historical Society.	
174	Rattin	Clonfad 2 (Kinnegad)	WM027-066001-						YES	Under Clonfad (Killucan) in Journal of the Association for the Preservation of the Memorials of the Dead in Ireland Vol 10, 247; also under Clonfad in O Conlain, M 2002 A Partial List of some Memorials in Westmeath Churchyards, 13 vol set (Connell 2012, 121).	
175	Relick (Longworth)	Relic/Ballynacargy; Piercetown	WM017-005003-						YES	O Conlain, M 2002 A Partial List of some Memorials in Westmeath Churchyards, 13 vol set; O Conlain, M. (2010) Inscriptions in Westmeath Churchyards, Part Two, Westmeath Archaeological and Historical Society.	
176	Reynella	Cooke Mausaleum, St. John the Baptist's Church of Ireland church: 'Killyanan'	N/a	15401309	013-007				YES	O Conlain, M. (2010) Inscriptions in Westmeath Churchyards, Part Two, Westmeath Archaeological and Historical Society.	
177	Robinstown (Levinge)	Ballyglass; New Cemetery, Longford Road; Mullingar Town Cemetery; Robinstown (Delvin by)	N/a	15309010	019-010				YES	Register of Interments in Ballyglass Cemetery 24.03.1891-03.03.1911, Microfilm (Mf)	Westmeath CC initiative, not yet published, however see <a href="http://www.advertiser.ie/mullingar/article/58340/over-14000-records-compiled-for-ballyglass-cemetery">http://www.advertiser.ie/mullingar/article/58340/over-14000-records-compiled-for-ballyglass-cemetery</a>
178	Robinstown (Levinge)	Union Workhouse graveyard; Outside Mullingar; Famine; Robinstown (Delvin by)	N/a	15309019	019-019				YES	Under Mullingar Famine Graveyard, in O Conlain, M. (2010) Inscriptions in Westmeath Churchyards, Part Two, Westmeath Archaeological and Historical Society.	
179	Rochford Demesne	Moylisker Col; Moyliskar	N/a	15402618	026-016				YES	Under MOYLISCAR, in O Conlain, M 2002 A Partial List of some Memorials in Westmeath Churchyards, 13 vol set; Journal of the Association for the Preservation of the Memorials of the Dead in Ireland Vol 9, 557; mixed up with Anneville possibly in O Conlain M. 2009	
180	Russagh	Russagh	WM006-062001-				SOME		YES	O Conlain, M 2002 A Partial List of some Memorials in Westmeath Churchyards, 13 vol set	Incomplete at <a href="http://www.igp-web.com/IGPArchives/ire/westmeath/photos/tombstones/1headstones/russagh.htm">http://www.igp-web.com/IGPArchives/ire/westmeath/photos/tombstones/1headstones/russagh.htm</a>
181	Simonstown (Rathcoole)	Burial Ground at Simonstown	WM018-061----						NO	None	
182	South Hill (Southhill)	South Hill Convent Burial Ground; St Mary's Hospital;	N/a	15401401	014-016				YES	O Conlain, M. (2010) Inscriptions in Westmeath Churchyards, Part Two, Westmeath Archaeological and Historical Society.	
183	Springfield Or Spittle	Hospitalers?	WM019-092----						NO	None	
184	Stonehall	Multyfarnham Stonehall; St John The Baptist Church	N/a	15401231	012-027				YES	O Conlain, M 2002 A Partial List of some Memorials in Westmeath Churchyards, 13 vol set; Journal of the Association for the Preservation of the Memorials of the Dead in Ireland Vol 11, 241-5; Wallace, P (1984) Multyfarnham Parish History, Multyfarnham, 202-3	

REF	Townland	Names	RMP	NIAH	RPS	Map	Photo	Ill.	Inscribed	Paper sources	Online
185	Taghboyne	Taughboyne; Teaghboyne; Teaghboyan; Teaghbogan; Teaghbovan	WM025-078003-						YES	Under TEAGHBOYAN, in O Conlain, M 2002 A Partial List of some Memorials in Westmeath Churchyards, 13 vol set	
186	Temple Patrick	Templepatrick	WM017-061001-						YES	O Conlain, M 2002 A Partial List of some Memorials in Westmeath Churchyards, 13 vol set; Cormack, A.S. (nd) Graveyard Inscriptions, Templepatrick, Moyvore	
187	Templeoran North	Templeoran	WM033-052001-						YES	O Conlain, M 2002 A Partial List of some Memorials in Westmeath Churchyards, 13 vol set; O Conlain, M. (2010) Inscriptions in Westmeath Churchyards, Part Two, Westmeath Archaeological and Historical Society.	
188	Tevrin	Turin RC Church	N/a	15401307					YES	ONLINE	Incomplete at <a href="http://www.interment.net/data/ireland/westmeath/turin/turin.htm">http://www.interment.net/data/ireland/westmeath/turin/turin.htm</a> and <a href="http://www.igp-web.com/IGPArchives/ire/westmeath/cemeteries/turin-cem.txt">http://www.igp-web.com/IGPArchives/ire/westmeath/cemeteries/turin-cem.txt</a>
189	Toberaquill	Tobernaquill churchyard	WM012-180002-						NO	None	
190	Toberclare	Tubberclair; Toberclair; Toberclare; Tubberclare Church; St. Mary's RC Chapel	N/a	15402221	022-035				YES	Under TUBBERCLARE in O Conlain, M. (2010) Inscriptions in Westmeath Churchyards, Part Two, Westmeath Archaeological and Historical Society.	
191	Townparks (Castepollard)	Castlepollard; St. Michael's RC Church, Church Street, C19th. Note St Michael's Cemetery is further along road out of town	N/a	15302022	007-019				YES	Under St. Michael's (RC) in O Conlain, M. (1996) Castlepollard Memorials: Some Memorials from Castlepollard Parish; Journal of the Association for the Preservation of the Memorials of the Dead in Ireland Vol 4, 486, 494-7; Vol 5, 274 (combined ref for all Castlepollard graveyards in O Connel 2012, 120)	St Michael's cemetery (down the road from church) at <a href="http://www.interment.net/data/ireland/westmeath/stmike/index.htm">http://www.interment.net/data/ireland/westmeath/stmike/index.htm</a>
192	Townparks (Castepollard)	Castlepollard ; St Michael's Col Church, The Square	N/a	15302036	007-027				YES	Under St. Michael's (Col) in O Conlain, M. (1996) Castlepollard Memorials: Some Memorials from Castlepollard Parish; Journal of the Association for the Preservation of the Memorials of the Dead in Ireland Vol 4, 486, 494-7; Vol 5, 274 (combined ref for all Castlepollard graveyards in O Connel 2012, 120)	
193	Townparks (Castepollard)	Castlepollard; Kilfree; Killafree ruined church, Church Lane	WM003-096001-	15302027	003-006		SOME		YES	Under KILAFREE in O Conlain, M. (1996) Castlepollard Memorials: Some Memorials from Castlepollard Parish; Journal of the Association for the Preservation of the Memorials of the Dead in Ireland Vol 4, 486, 494-7; Vol 5, 274 (combined ref for all Castlepollard graveyards in O Connel 2012, 120)	Under Killafree at <a href="http://www.interment.net/data/ireland/westmeath/killafree/killafree.htm">http://www.interment.net/data/ireland/westmeath/killafree/killafree.htm</a> ; under PLUNKETT in <a href="http://www.igp-web.com/IGPArchives/ire/westmeath/photos/tombstones/castlepollardkil/plunkett1509gph.txt">http://www.igp-web.com/IGPArchives/ire/westmeath/photos/tombstones/castlepollardkil/plunkett1509gph.txt</a> ; images at <a href="http://www.igp-web.com/IGPArchives/ire/westmeath/photos/tombstones/castlepollardkil/plunkett1509gph.txt">http://www.igp-web.com/IGPArchives/ire/westmeath/photos/tombstones/castlepollardkil/plunkett1509gph.txt</a>
194	Tristernagh	Templecross Church, Tristernagh; Armorial Plaque	WM011-051001-	15401112	011-032	YES		SOME	YES	Under TEMPLECROSS, in O Conlain, M 2002 A Partial List of some Memorials in Westmeath Churchyards, 13 vol set; Westmeath Genealogy Project (1990s) Templecross Graveyard Survery, Tristernagh, Ballinacargy; Brewer, J.N. 1825-6 The beauties of Ireland: being the original delineations, topographical, historical and biographical of each county, 2 vols. London. Sherwood, Jones and Co.; Woods, J. (ed.) 1907 Annals of Westmeath ancient and modern. Dublin. Sealy, Bryers & Walker; Journal of the Association for the Preservation of the Memorials of the Dead in Ireland Vol 5, 115-9; Vol 6, 609-10	<a href="https://www.archaeology.ie/archaeological-survey-ireland">https://www.archaeology.ie/archaeological-survey-ireland</a>
195	Tristernagh Demesne	Augustinian Abbey	WM011-053001-						NO	None	
196	Tuitestown (Moyash)	Kenny Church (ruined)	WM018-115001-						YES	Under KENNY, O Conlain, M 2002 A Partial List of some Memorials in Westmeath Churchyards, 13 vol set; Under KENNY in O Conlain, M. (2010) Inscriptions in Westmeath Churchyards, Part Two, Westmeath Archaeological and Historical Society.	
197	Turbotstown	Coole, St Marys RC Church	N/a	15400333	003-039				YES	O Conlain, M. (1998) Memorials in Mayne and Faughalstown, Mayne Heritage Association; Memorials at Turbotstown House private chapel to DEASE family also recorded in O Conlain, M. (1998) Memorials in Mayne and Faughalstown, Mayne Heritage Association	
198	Tyfarnham	Tyfarnham Churchyard	WM012-003001-						NO	None	



REF	Townland	Names	RMP	NIAH	RPS	Map	Photo	Ill.	Inscribed	Paper sources	Online
199	Tyrrellspass	St. Sinian's Tyrrellspass C of I, Tyrrell's Pass	N/a	15322026	039-020	YES			YES	O Conlain, M 2002 A Partial List of some Memorials in Westmeath Churchyards, 13 vol set; Poynton. M. and O'Neill, T. (nd) Headstone Inscriptions. Catalogue. St. Sinian's Churchyard, Tyrrellspass.; Journal of the Association for the Preservation of the Memorials of the Dead in Ireland Vol 11, 344-5; under Ballykilmore in O Conlain 2009	
200	Ushnagh Hill	Ushnagh Hill archaeological site	WM024-064001-						NO	None	
201	Walshestown North	Walshestown (new); 'Mountain Chapel' OS map (sic?); Note graveyard extends into Slane <a href="#">More td</a>	N/a	15401817	018-016				YES	O Conlain, M. (2006) Memorial Inscriptions: Walshestown Churchyard; Walshestown Churchyard Book Intro (Melanie McQuade)	
202	Whitewell (Kilbride)	Kilbride (Dunbode Est); Kilbride-Pace? Kilbride-Pilate? One graveslab moved To Kilbride, <a href="#">just outside graveyard.</a>	WM033-008001-						NO	None	
203	Williamstown (Roch)	Killulagh new graveyard; St. John the Baptist RC Church; St. Livinius; St. Livinus	WM013-057003-	15401313	013-012	SOME	SOME		YES	Under KILLULAGH, in O Conlain, M 2002 A Partial List of some Memorials in Westmeath Churchyards, 13 vol set; in Reilly, F. W. (2014) Graveyard Inscriptions: Killulagh Cemetery, adjoining St. Livinus Church, Killulagh, Delvin; Journal of the Association for the Preservation of the Memorials of the Dead in Ireland Vol 1, 245; Vol 2, 374; Vol 7, 192, 682-3; O'Connell (2012) says to 'see also St. Mulchan's' in her entry for Killulagh of Castletowndelvin Parish, perhaps referring to the older graveyard in Killulagh townland (refer that entry).	<a href="http://www.igp-web.com/IGPArchives/ire/westmeath/photos/tombstones/1headstones/killulagh.txt">http://www.igp-web.com/IGPArchives/ire/westmeath/photos/tombstones/1headstones/killulagh.txt</a> ; and photos