



A Portfolio of Gold Projects in the Guiana Shield



2019 Precious Metals Summit
Beaver Creek

Corporate Presentation




REUNION
GOLD CORPORATION

Disclaimer

Qualified Person: The technical information in this presentation has been approved by Carlos H. Bertoni, M.Sc., P. Geo., a consultant to Reunion.

Disclaimer: The business of Reunion Gold Corporation is subject to considerable risks and uncertainties, including financial, operational, environmental and political risks which even a combination of careful evaluation, experience and knowledge may not eliminate. Few properties that are explored are ultimately developed into producing mines.

Certain statements made in this presentation, including, without limitation, those concerning the outlook for Reunion's operations, the planned exploration and development activities, plans to validate historical resources, potential mineralization, and development activities and the ability of the Company to meet the conditions to exercise the options to acquire the projects described in the presentation constitute 'forward looking statements' or 'forward looking information' under applicable U.S. and Canadian securities legislation. By its nature, forward-looking information requires Reunion to make assumptions that may not materialize or that may not prove to be accurate. Forward looking information is subject to a variety of risks, both known and unknown, including risks related to the renewals of the concessions and permits for the French Guiana projects, fluctuation of gold prices, risks and dangers inherent to mining exploration and development, political and social uncertainties, imprecision of resource estimates, environmental and permitting risks, the state of global capital markets and the availability of capital resources to execute plans. Although Reunion believes that the expectations reflected in the forward-looking information contained in this presentation are reasonable, no assurance can be given that these expectations will prove to have been correct. Accordingly, results could differ materially from those set out in the forward-looking information. The objectives expressed throughout this presentation are based on Reunion's assessment of the data currently available and are conceptual in nature.

Cautionary Note to U.S. Investors: This presentation may use the terms "measured", "indicated" and "inferred" resources. We advise U.S. investors that while these terms are recognized and required by Canadian regulations, the U.S. Securities and Exchange Commission does not recognize them. U.S. investors are cautioned not to assume that any part or all of mineral deposits in these categories will ever be converted into reserves. In addition, "inferred" resources have a great amount of uncertainty as to their existence, and great uncertainty as to their economic and legal feasibility. It cannot be assumed that all or any part of inferred mineral resources will ever be upgraded to a higher category. U.S. investors are cautioned not to assume that any part or all of an inferred mineral resource exists or is economically or legally mineable.



- Focused on exploring gold projects in the highly prospective and under-explored Guiana Shield gold district.
- Strategic Alliance with Barrick Gold Corporation.
- In French Guiana, advanced exploration is underway at the Dorlin and Boulanger Projects.
- At the NW District of Guyana, early stage exploration is underway at the Waiamu, Aremu, Arawini and Oko Projects, in the Guyana Goldfields' Aurora mine region.



- Proven technical & management team with enviable track record of success in the Guiana Shield.
- Team includes David Fennell, founder of Golden Star Resources, who co-developed the Omai mine (Guyana) and Gross Rosebel mine (Suriname) with Cambior, and Rejean Gourde who was responsible for the development/operation of these two mines.



- In early 2019, completed a financing raising \$13.0 million.
- Strong support from major shareholders Barrick Gold Corp. (19.4%) and Dundee Corp. (12.7%); other shareholders include Donald Smith Value Fund (~7.7%) and Gold 2000 (~3.4%).

February

- Strategic alliance with Barrick Gold, closed \$13 million private placement.

March

- Mineral resource estimate for Nivré deposit, Dorlin project, FG.

April

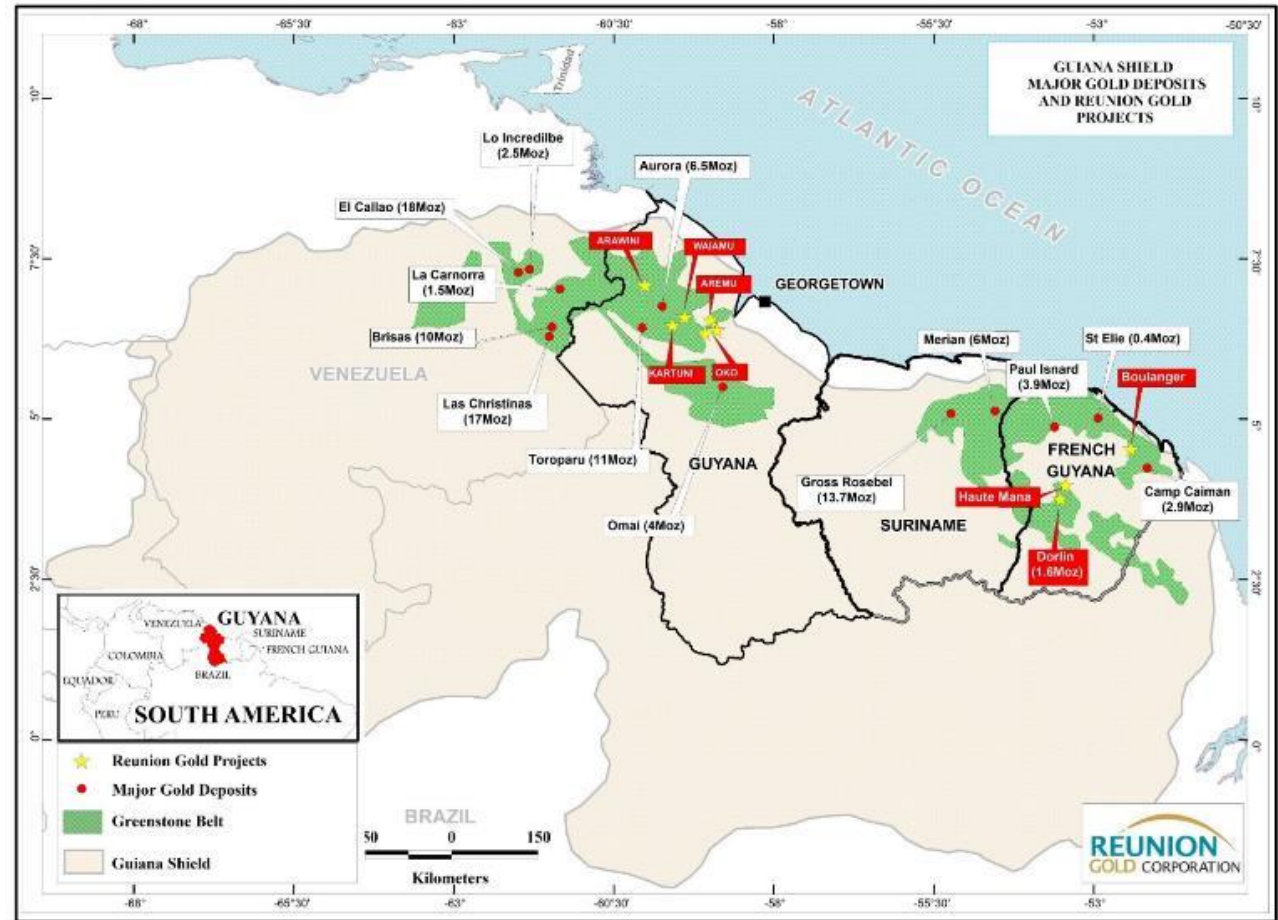
- NI 43-101 Technical report for Dorlin project, FG.

May/June

- Amended Boulanger agreement to add St-Michel AEX and Chawari PER and start of field work at St-Michel, FG.

July

- New high-grade discovery at Boulanger project, FG.



Guiana Shield projects and major gold deposits

- Reunion and Barrick formed a 50-50 alliance to jointly explore for, develop and mine mineral projects in the Guiana Shield, including Guyana, Suriname, French Guiana and the north and northeast regions of Brazil (**Alliance Area**).
- Barrick increased its interest in Reunion to 19.9%.
- Reunion will manage all projects in Alliance during the exploration phase; Barrick will manage during the feasibility stage.

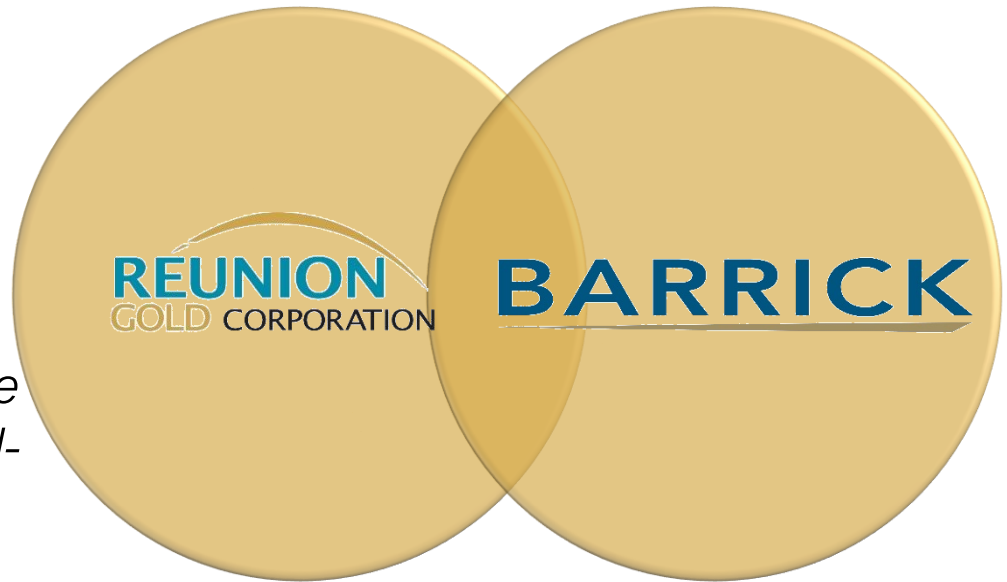
- Reunion initially contributed the Waiamu, Aremu, Arawini and Oko Projects (**Initial Included Projects**) to the Alliance; all are in Guyana.
- Barrick will initially fund US\$4.2 million on the Initial Included Projects, with subsequent funding on a 50:50 basis.
- If Reunion acquires an interest in a project in the Alliance Area, Barrick can elect to include it in the Alliance.

- Barrick has right to designate an Included project as a **Designated Project**. Following such designation, Barrick will sole fund the Designated project through feasibility.
- Following completion of a feasibility study Barrick's interest in the Designated Project will increase to 70% (Reunion 30%).

Strategic alliance with Barrick Gold Corporation to explore, develop and mine mineral projects in the Guiana Shield

“The Alliance will seek to identify and acquire properties that have the potential to yield discoveries consistent with Barrick’s definition of Tier 1 mines, leveraging Reunion’s capabilities and proven track record in the region, combined with Barrick’s experience at advancing and developing world-class assets”.

Mark Bristow, President CEO of Barrick
(source: Barrick news release Feb. 4, 2019)



Capital Structure (September 5, 2019)	
Common Shares	418,005,271
Stock Options and RSUs	27,233,816
Warrants	45,882,495
Cash (as at June 30, 2019)	\$9.8M
Basic market capitalisation	\$123.3 M

Major Shareholders	
Barrick Gold Corporation	19.4%
Dundee Corporation	12.7%
Institutional Investors	30.0%
Management & Directors	6.0%

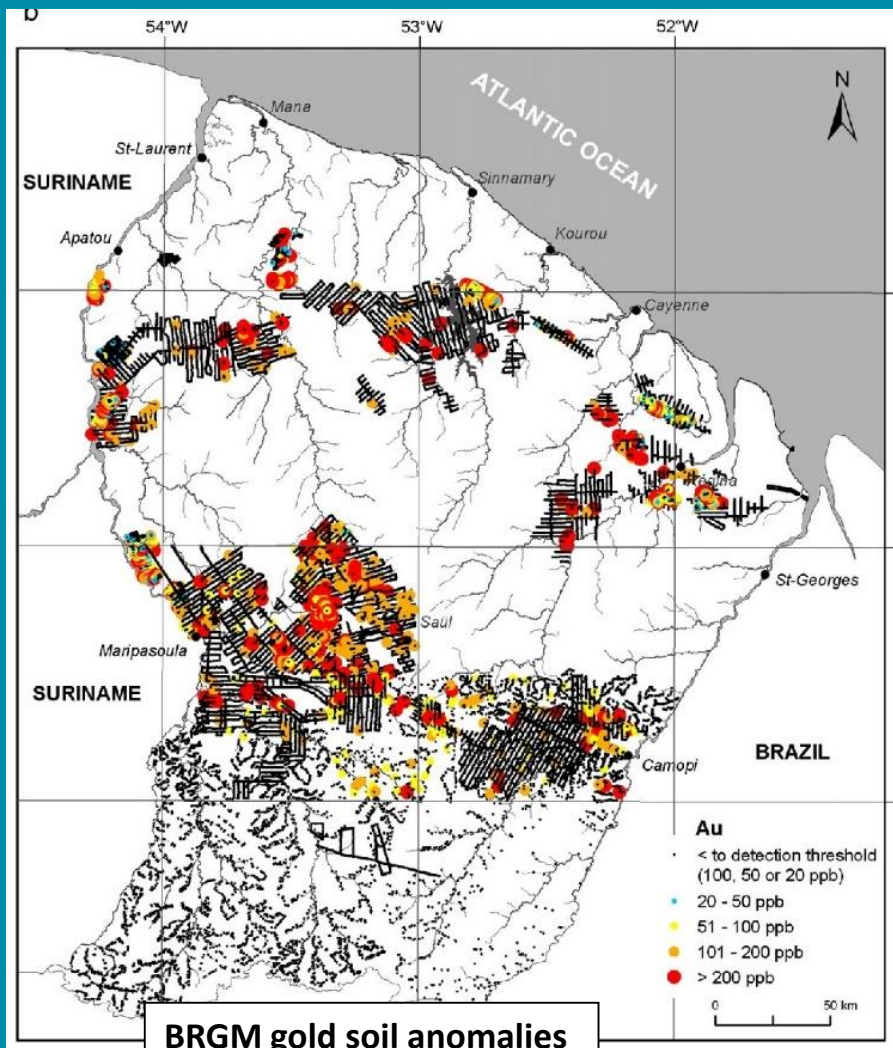
Charting for Reunion Gold Corporation





Nivre Mountain artisanal work

Dorlin Gold Project French Guiana



French Guiana

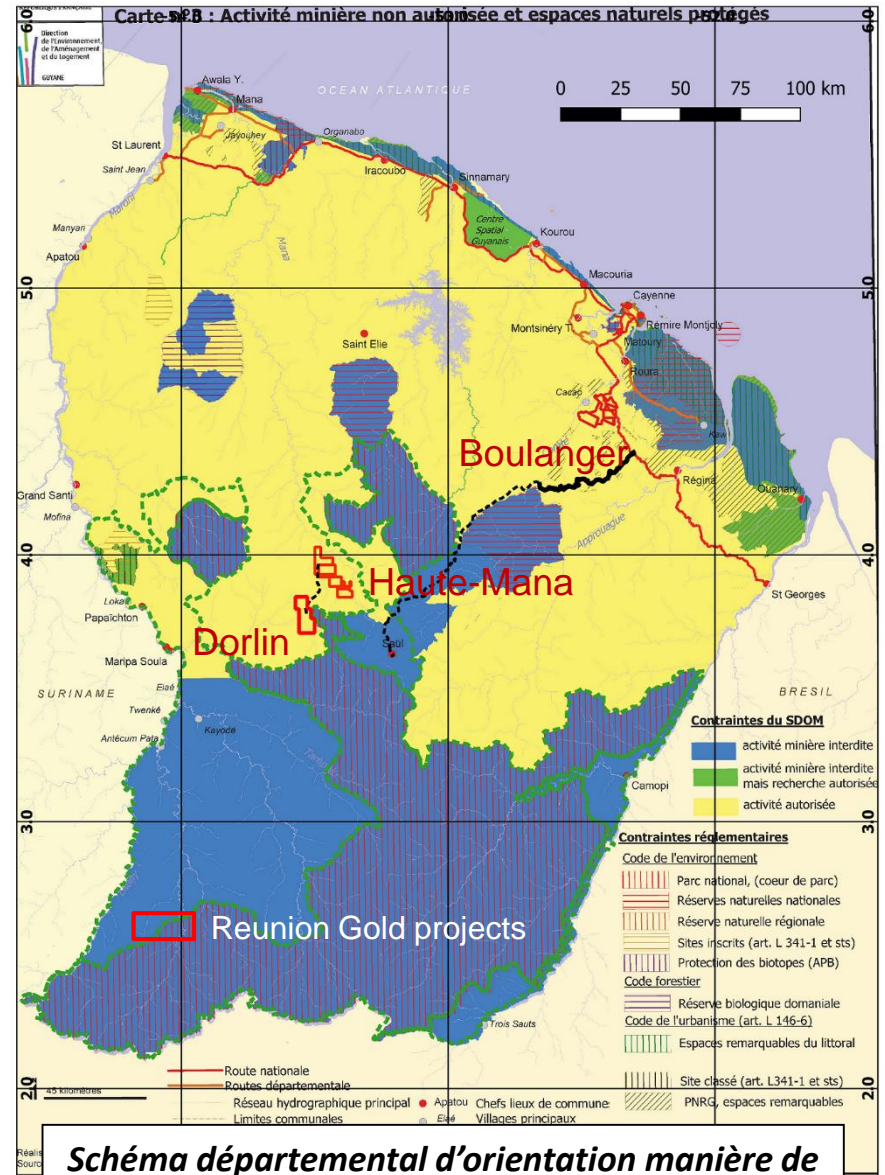


Schéma départemental d'orientation manière de la Guyane – SDOM
 All Reunion projects are in areas where mining is authorized

- Option to acquire up to **80%** interest from Auplata S.A. a 84 km² mining permit, 190 km SW of Cayenne. Application to renew Dorlin permit in July 2015 still pending.
- Access to the Project site by road, river and air.
- Project is underlain by a Proterozoic greenstone belt hosting numerous gold workings.
- Area was previously explored by BRGM/BHP, Guyanor and Cambior. Total of 25,366 m (183 holes) in diamond drilling, mostly on Nivré gold deposit.

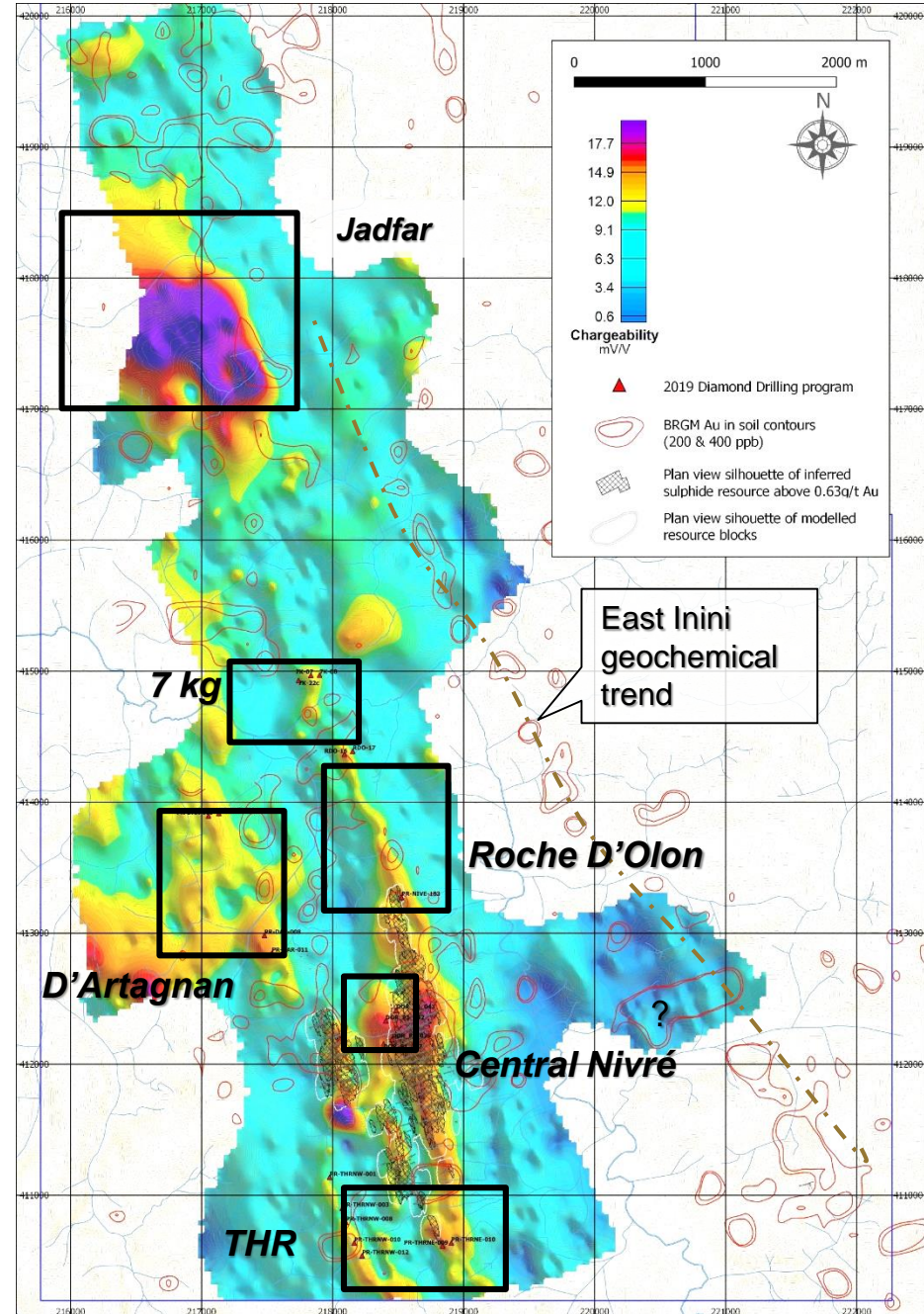
Dorlin Gold Project - 2019			
Q1	Q2	Q3	Q4
NI 43-101 Resource estimate of Nivré			Scoping study
	Drill permitting	Drilling	
	Mapping & Sampling		
IP survey			

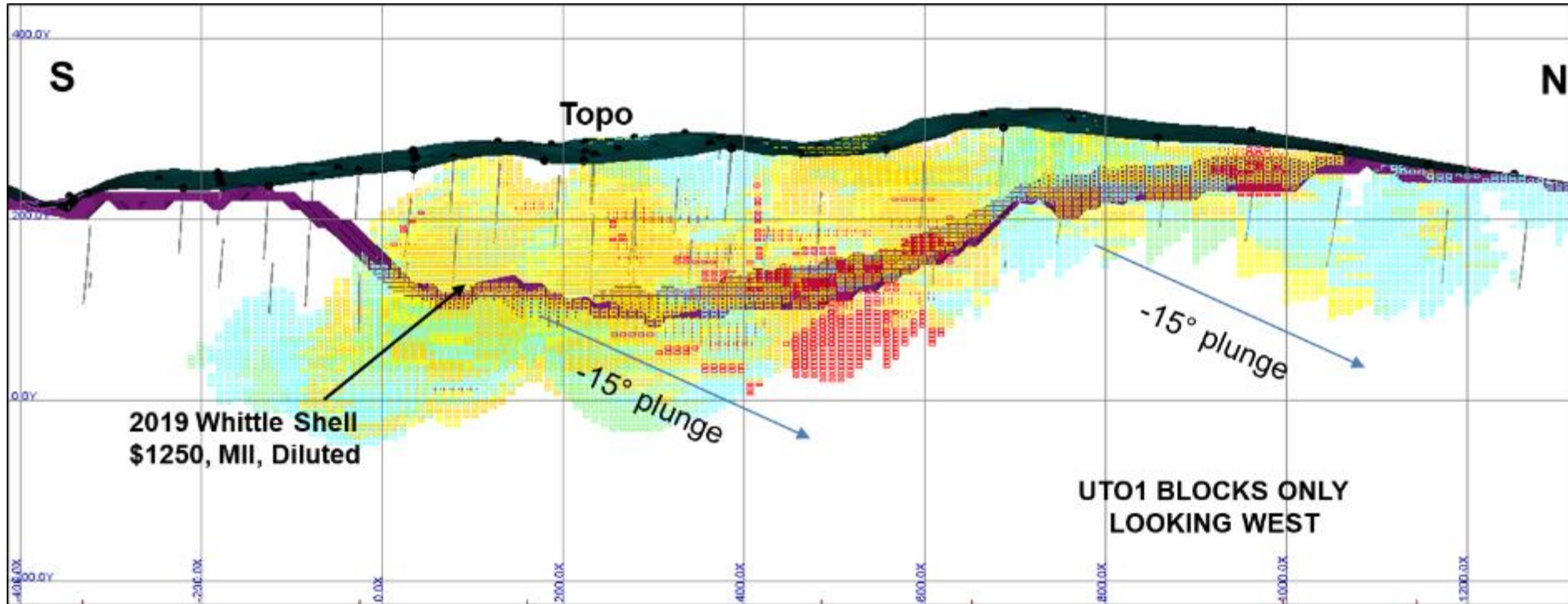
Expansion of Nivré gold deposit mineralization footprint

Current Exploration Program

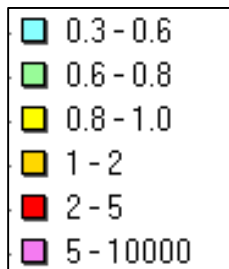
Geophysical anomalies outside of the Nivré area align with known geology, soil geochemistry, and outcropping mineralization. Majority untested by historical drilling.

- ✓ 2019 diamond drill program to test 7 kg, Roche d'Olon, D'Artagnan and THR areas. Rig is currently at Roche D'Olon.
- ✓ RC drilling, equivalent to rapid deep augering (30 to 50 m depths), will be implemented by Q4 to further test footprints of these and other targets on the project.
- ✓ Metallurgical tests





Au (g/t)



Mineral Resource Estimate March 2, 2019

Weathering	Lower Cut-off (g/t Au)	Mineral Resource Estimate March 2, 2019					
		Indicated Resources			Inferred Resources		
		Tonnage (Mt)	Grade (g/t Au)	Ounces (000s)	Tonnage (Mt)	Grade (g/t Au)	Ounces (000s)
Laterite/Colluvium	0.40	3.0	1.02	99	5.6	0.99	179
Saprolite	0.40	3.2	0.89	91	9.7	0.91	282
Transition	0.53	3.3	1.17	124	3.8	1.10	134
Fresh	0.63	9.4	1.16	351	6.9	1.30	288
Total and average		18.9	1.09	665	26.0	1.06	883

Notes on the Mineral Resource Estimate:

- 1) Mineral Resources are reported using a gold price of US\$ 1,250/ounce.
- 2) The metallurgical testing was set as 93% for all types of weathering based on historical metallurgy testing.
- 3) US\$/€ exchange rate was set at 0.86.
- 4) Cut-off grade of 0.40 g/t gold was used for colluvium/laterite and for saprolite, 0.53 g/t gold was used for transition and 0.63 g/t gold for fresh rock.
- 5) Mining dilution was included (5% in saprolite, 10% in fresh rock) when producing the whittle shells but the Mineral Resources are reported undiluted.
- 6) Classification of Mineral Resources conforms to CIM definitions.
- 7) The qualified person for the estimate is Mr. Réjean Sirois, P. Eng, Vice President Geology and Resources for G Mining Services Inc. The estimate has an effective date of March 2, 2019.
- 8) Mineral Resources do not have demonstrated economic viability. The estimate of Mineral Resources may be materially affected by environmental, permitting, legal, title, taxation, socio-political, marketing, or other relevant issues. The quantity and grade of reported Inferred Resources are uncertain in nature and there has been insufficient exploration to define these Inferred Resources as Indicated or Measured Mineral Resources.

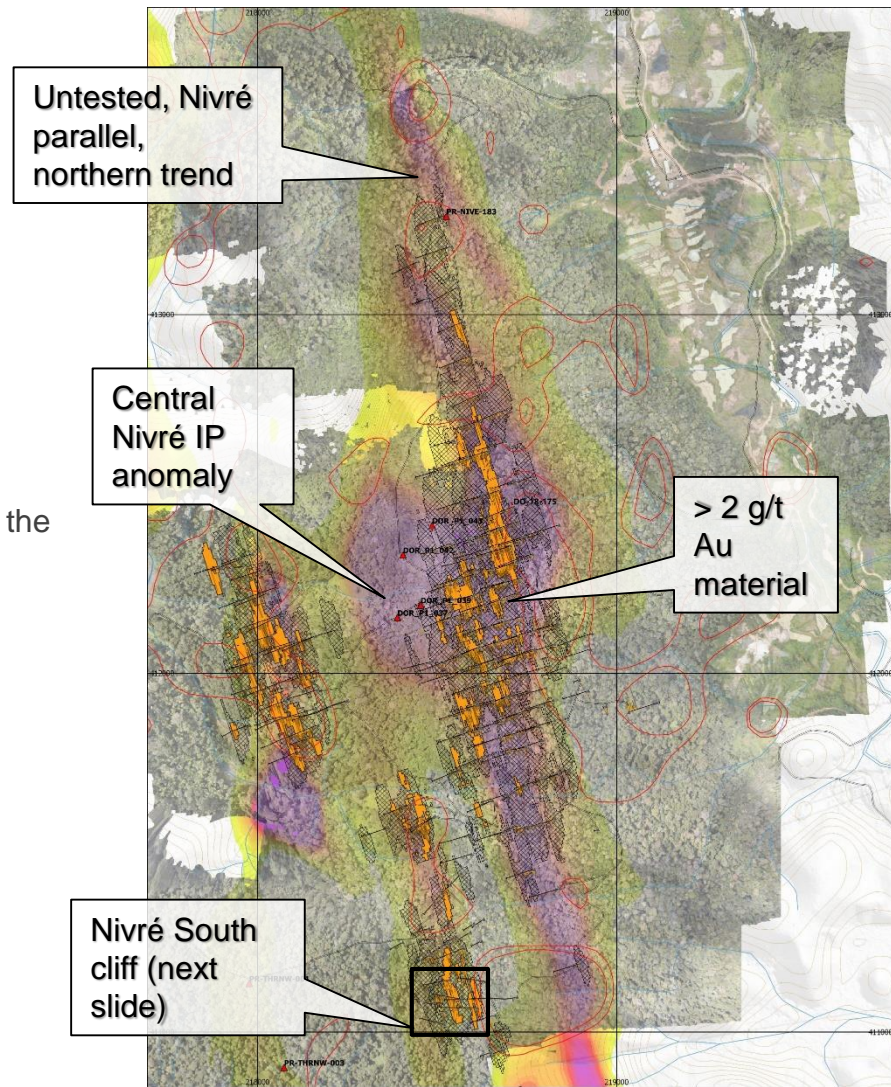
Nivré deposit current work

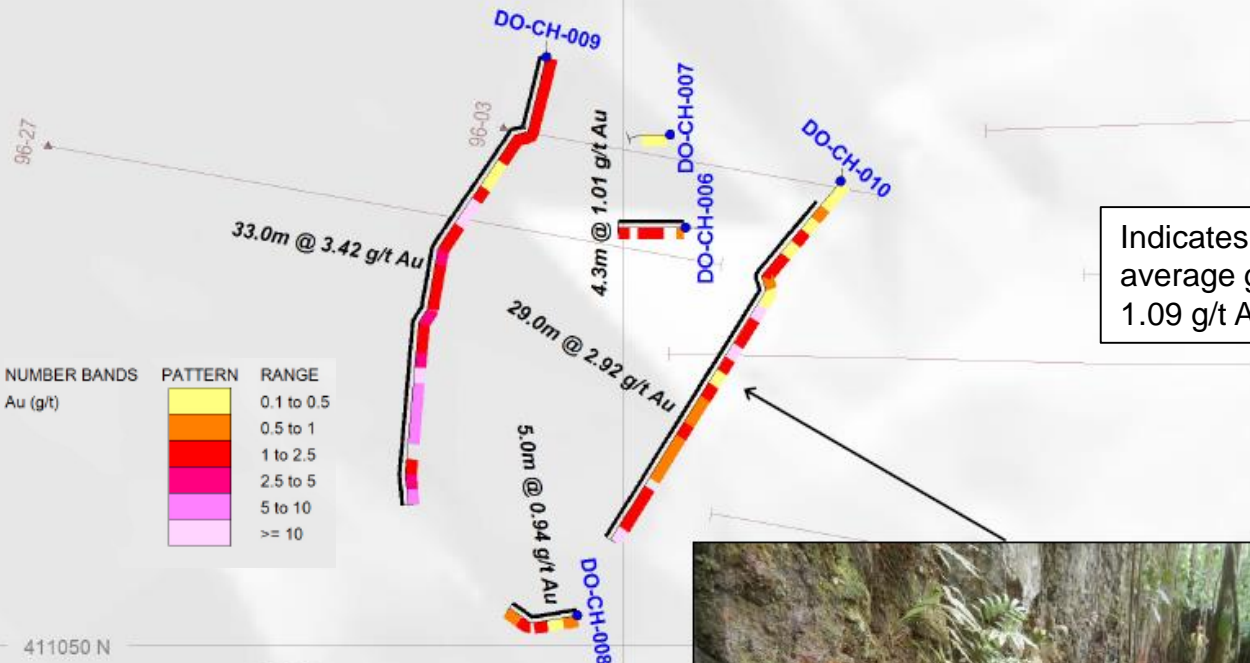
Metallurgical test work

- 580 kg of material submitted for test work to SGS Lakefield (Toronto).
- Advancing scoping study on the current resources.

Resource upgrade

- The central Nivré IP anomaly will be tested in the current drill program.
- Definition of high-grade gold through channel sampling of mineralized silica-tourmaline outcrops (e.g. Nivré South – see next slide).





Indicates potential for higher-than-average grade zones within the overall 1.09 g/t Au resource model.



HoleID	From (m)	To (m)	Interval (m)	Au (g/t)
DO-CH-006	0.1	4.35	4.25m	1.01
DO-CH-008	0	5	5m	0.94
DO-CH-009	0	33	33m	3.42
DO-CH-010	2	31	29m	2.92

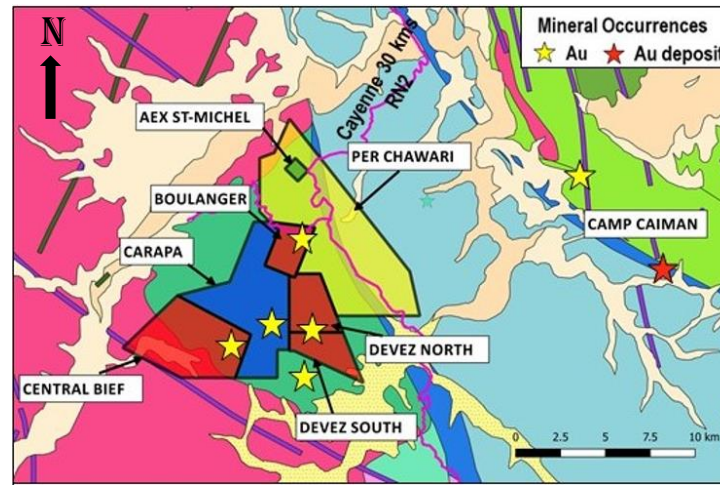
Significant intervals calculated using 0.5g/t Au cutoff, 3m minimum length & 3m maximum internal dilution

Nivré deposit outcrop channel sampling



Boulanger Gold Project French Guiana

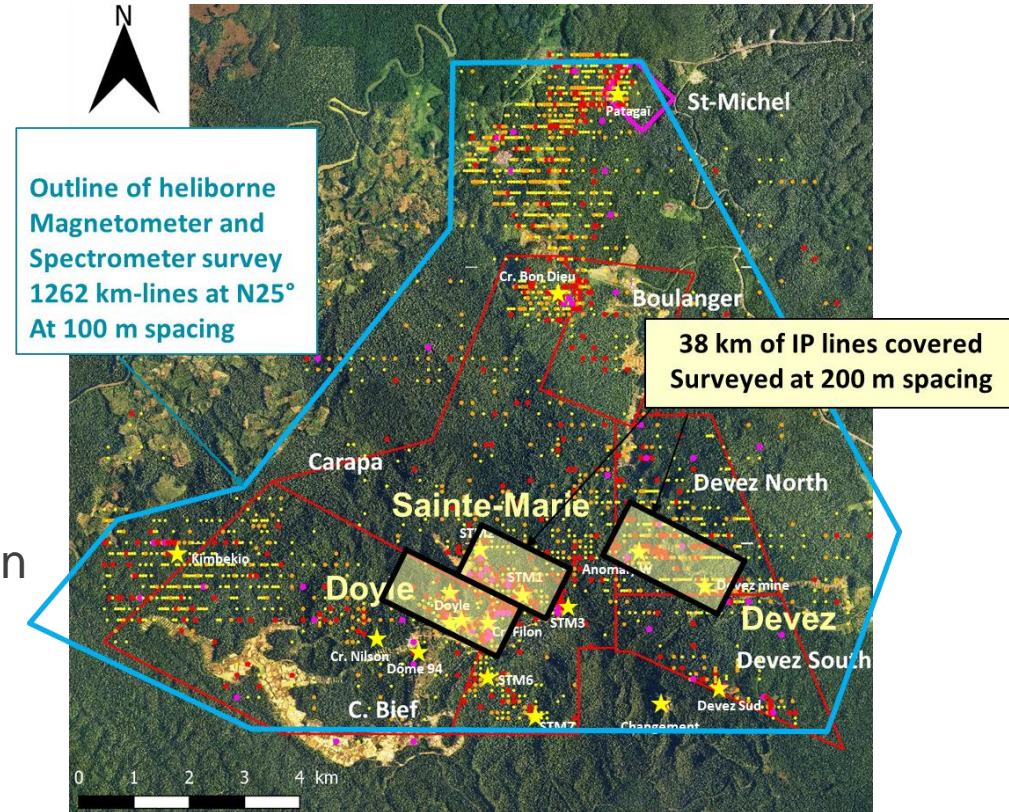
- Project includes the Boulanger, Devez, Central Bief concessions, Carapa PER, Chawari PER (application) and St-Michel AEX, covering historical gold-producing area.
- 60 km SE of Cayenne, covering an area of 79.2 km².
- Application submitted to renew concessions for 15 years.
- 4-year option (until July 2021) with Compagnie Minière de Boulanger to acquire 100% interest after spending US\$4 million on exploration.

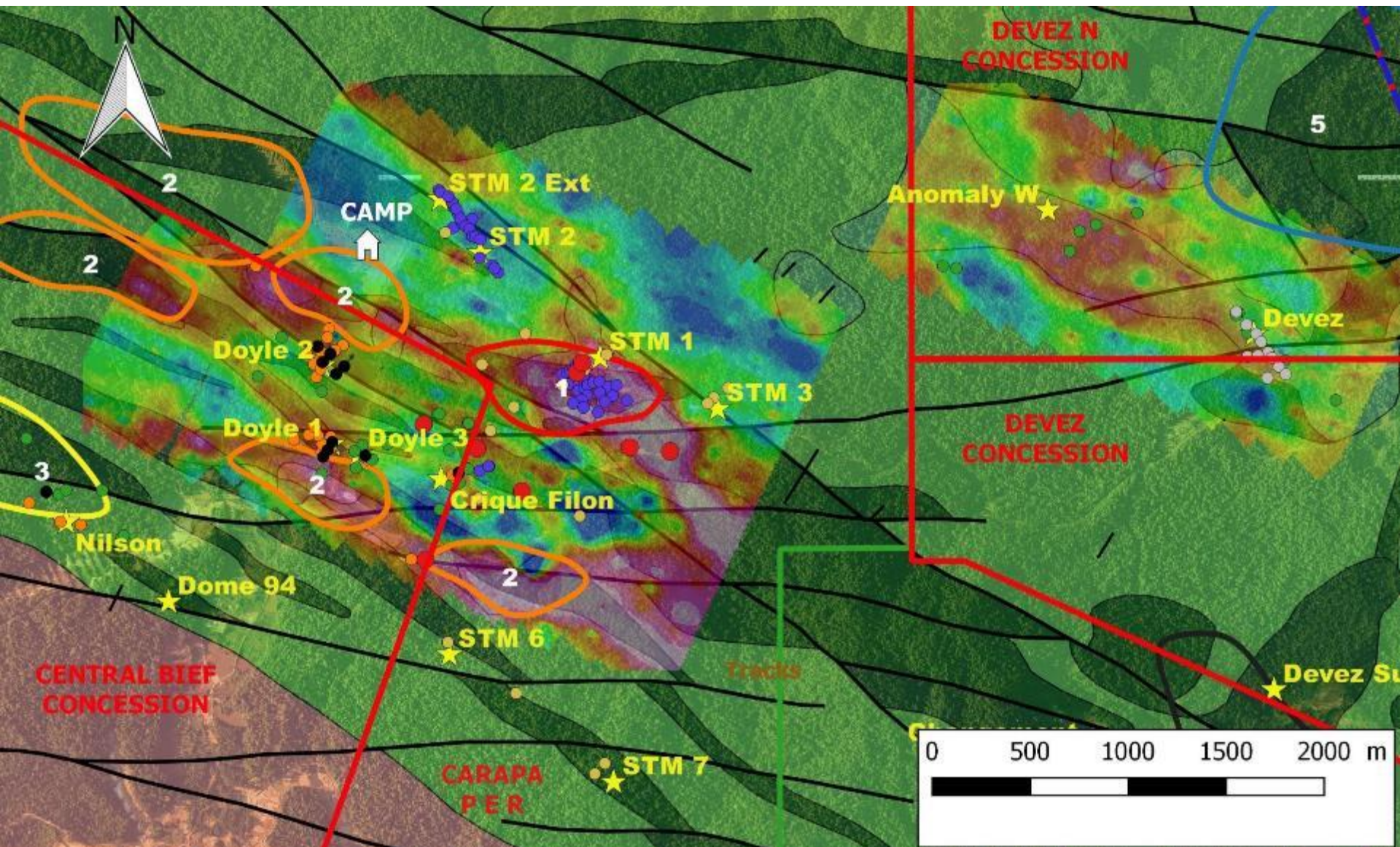


Boulanger Gold Project - 2019			
Q1	Q2	Q3	Q4
Airborne mag, IP, geology, geochem interpretation			
Drill permitting		Drilling	
IP survey			
Geology mapping & prospecting			

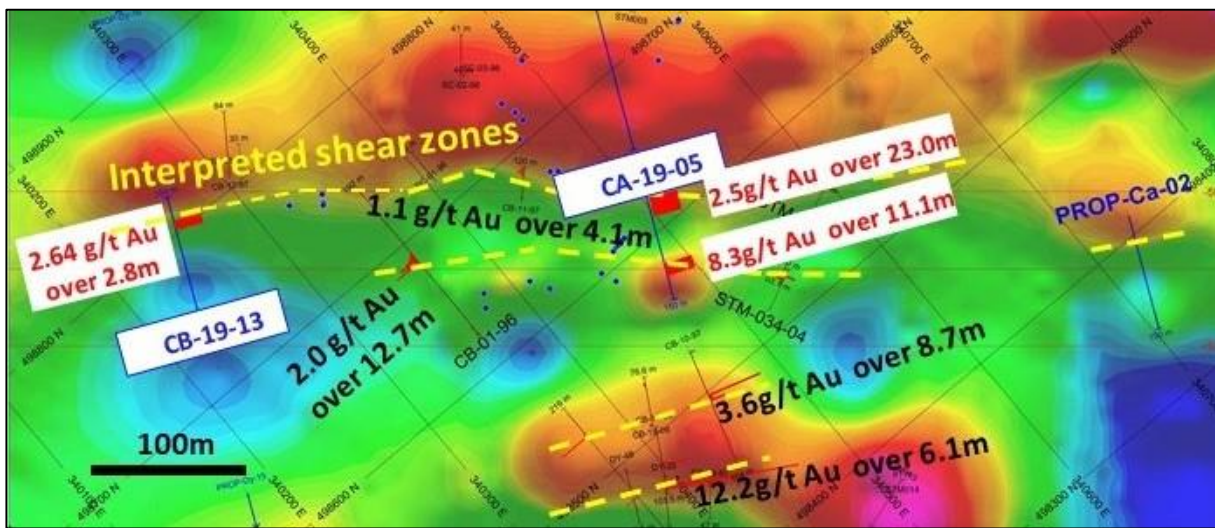
Work completed:

- ✓ Set-up geological database
- ✓ Heliborne mag/radiometric survey
- ✓ IP survey at Doyle-Central Bief-Carapa-Devez
- ✓ Drill programs at Doyle, Carapa and Central Bief :
 - ✓ Confirmed historical results
 - ✓ Intersected new gold mineralization
- ✓ New addition: St-Michel AEX and Chawari PER application



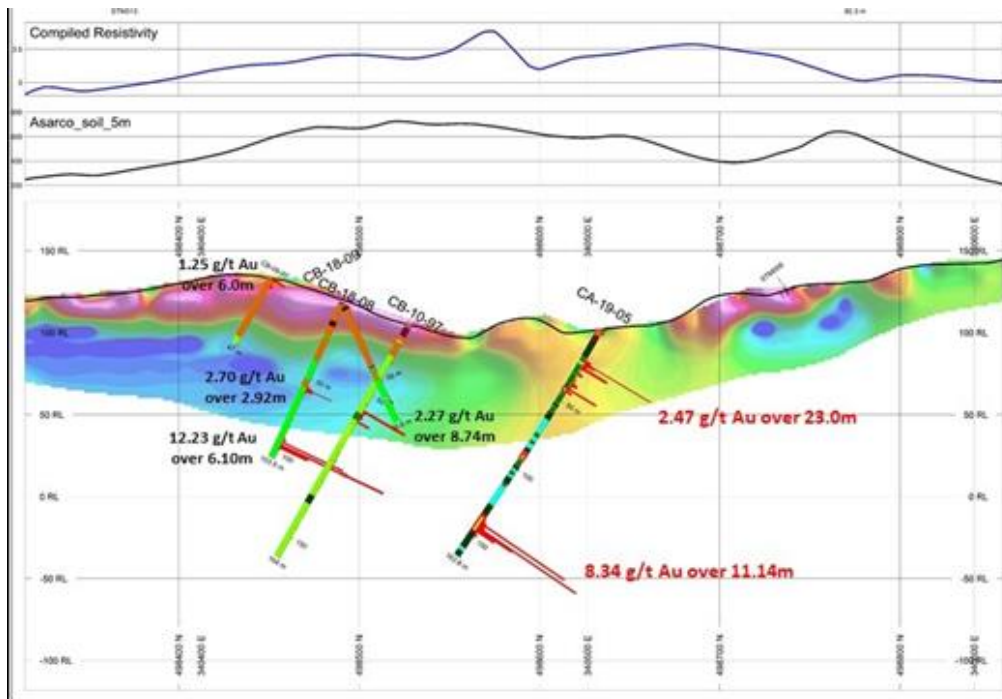


Carapa Doyle – IP on geology



Hole CA-19-05:

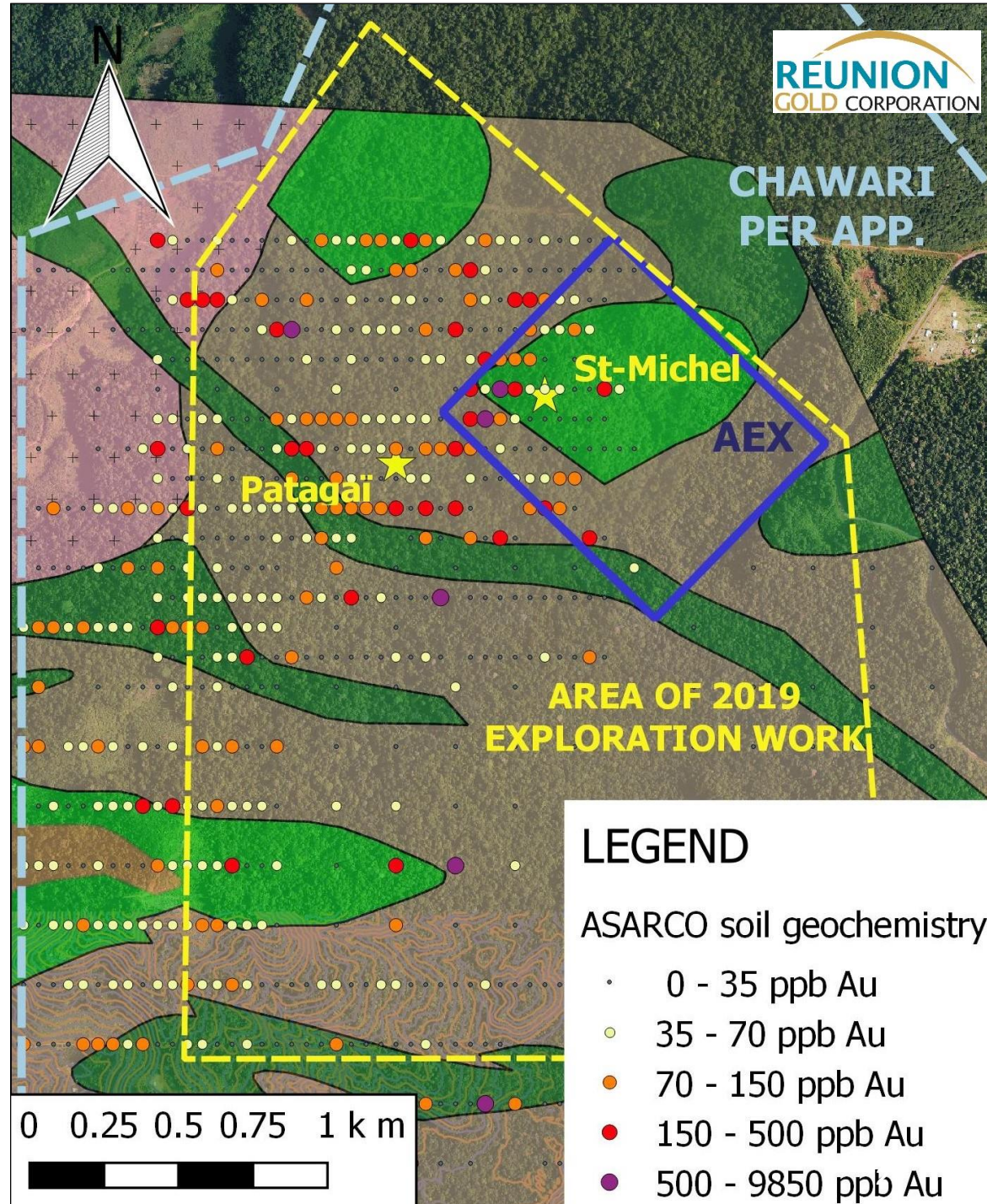
- Two significant high-grade intercepts:
- **2.47 g/t gold over 23 meters** on two sections:
 - ✓ 6.68 g/t gold over 3.1 m from 21 to 24.1 m
 - ✓ 9.73 g/t gold from 41 to 42 m.
- **8.34 g/t gold over 11.14 m**
 - ✓ from 137.86 to 148 m.

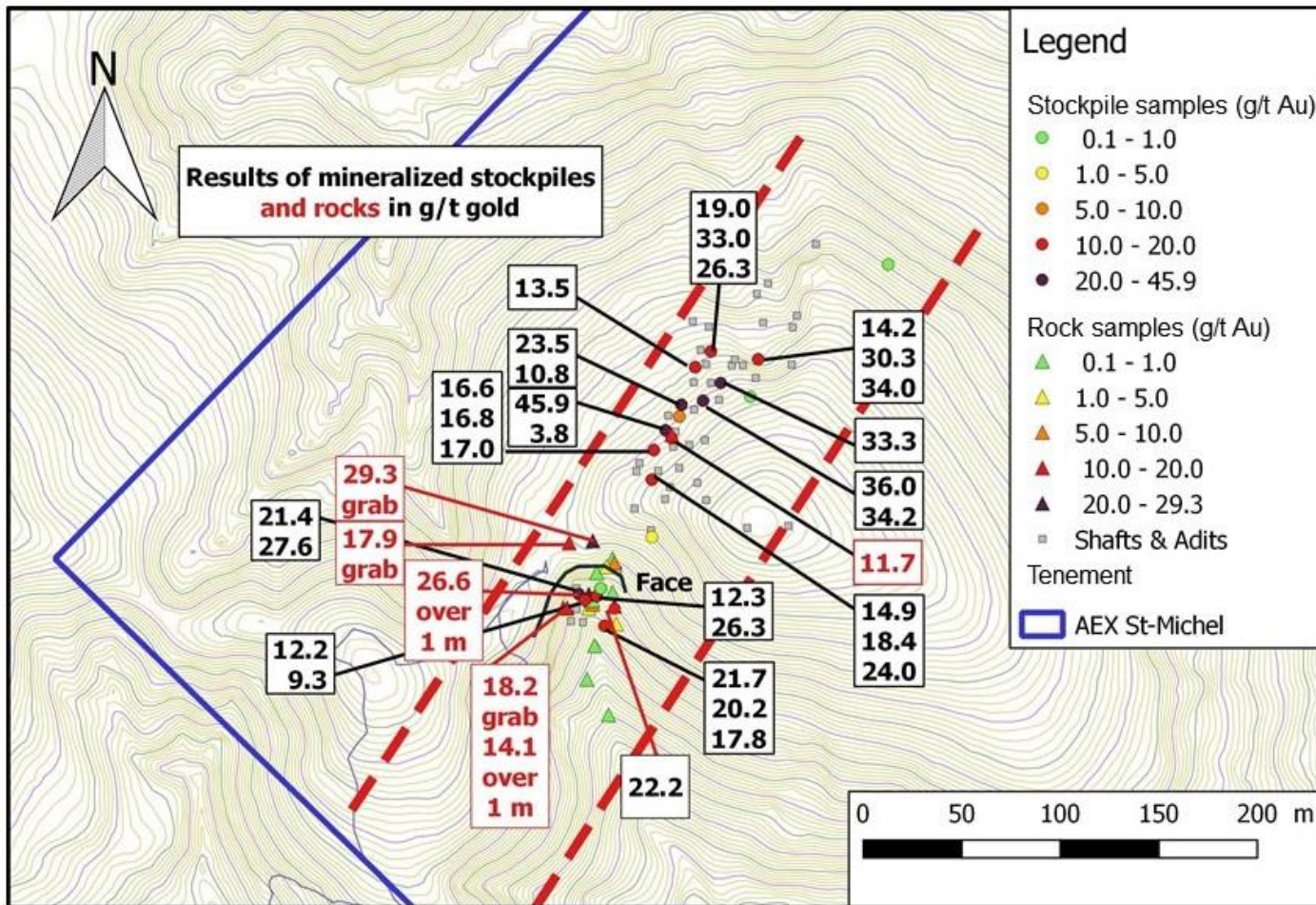


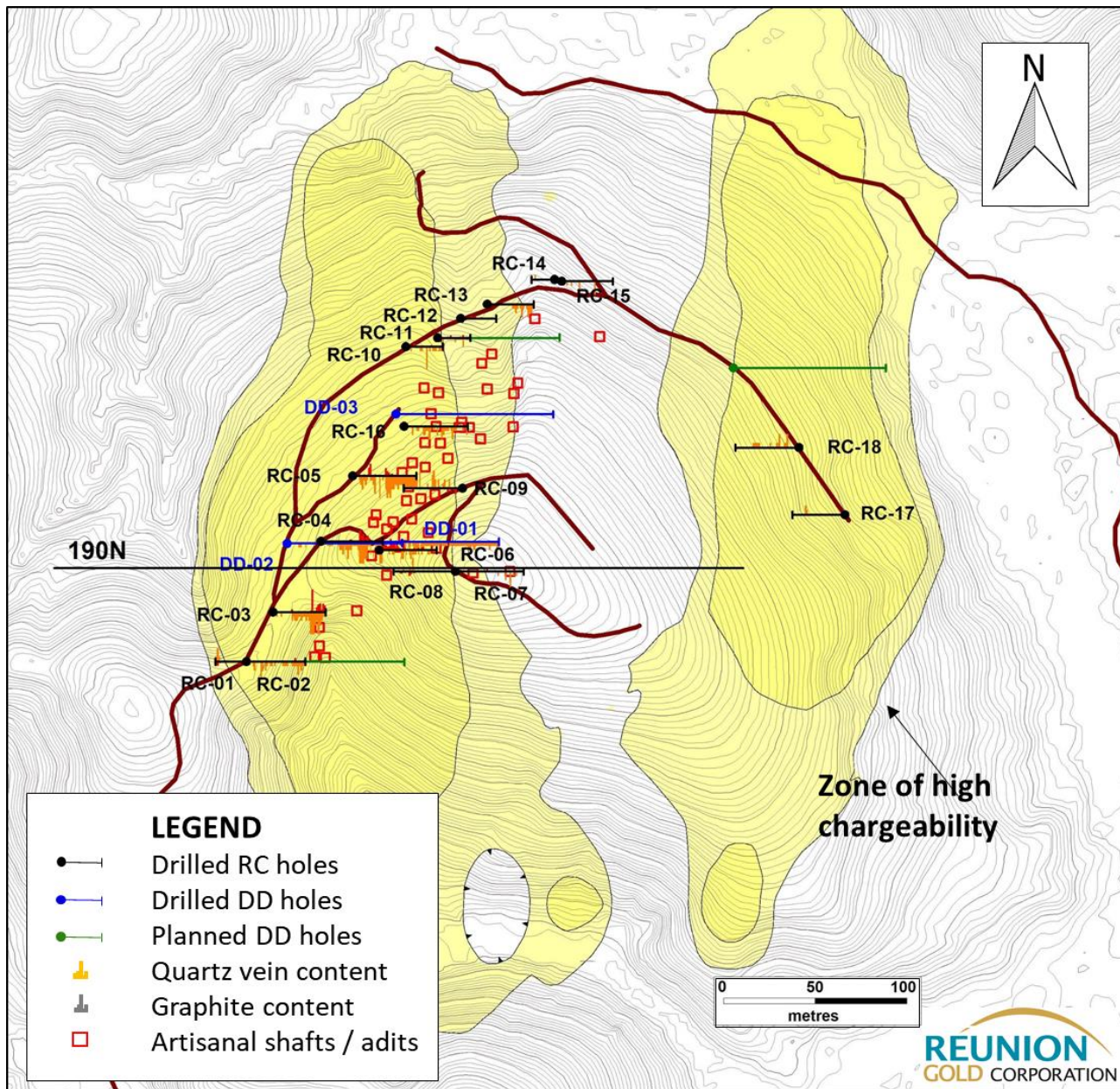
Follow-up drilling planned for 4Q 2019.

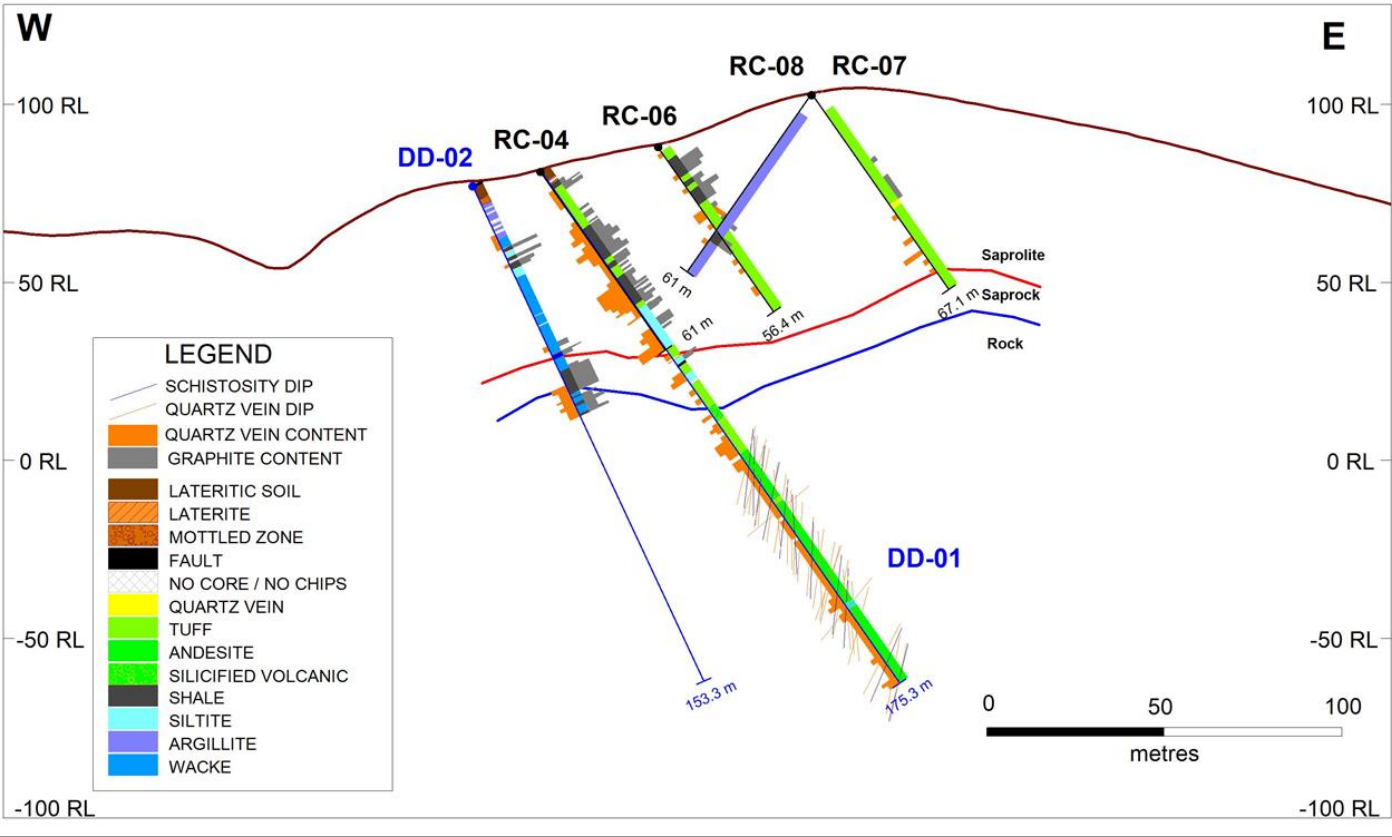
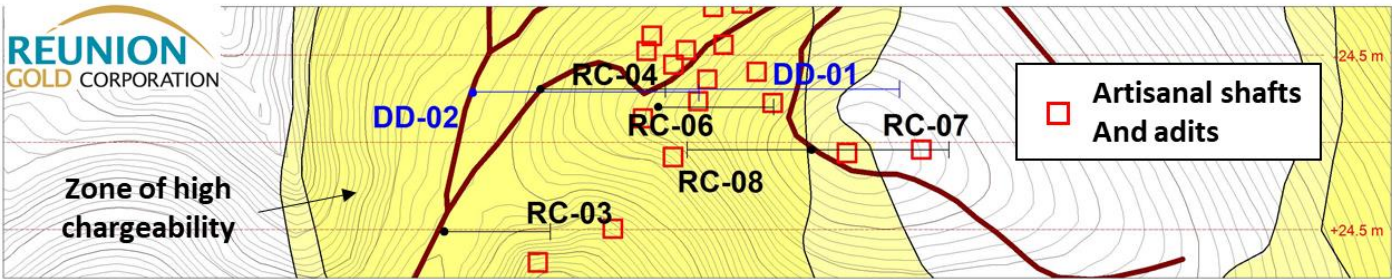
St-Michel Prospect

- St-Michel AEX included in amended Boulanger agreement
- St-Michel AEX is surrounded by the 45.7 km² Chawari PER application
- Mineralized stockpiles next to 47 artisanal shafts returned an average grade of 17.3 g/t gold
- IP geophysical survey
- RC drill program (880 m)
- Diamond drill program underway (1,000 m)

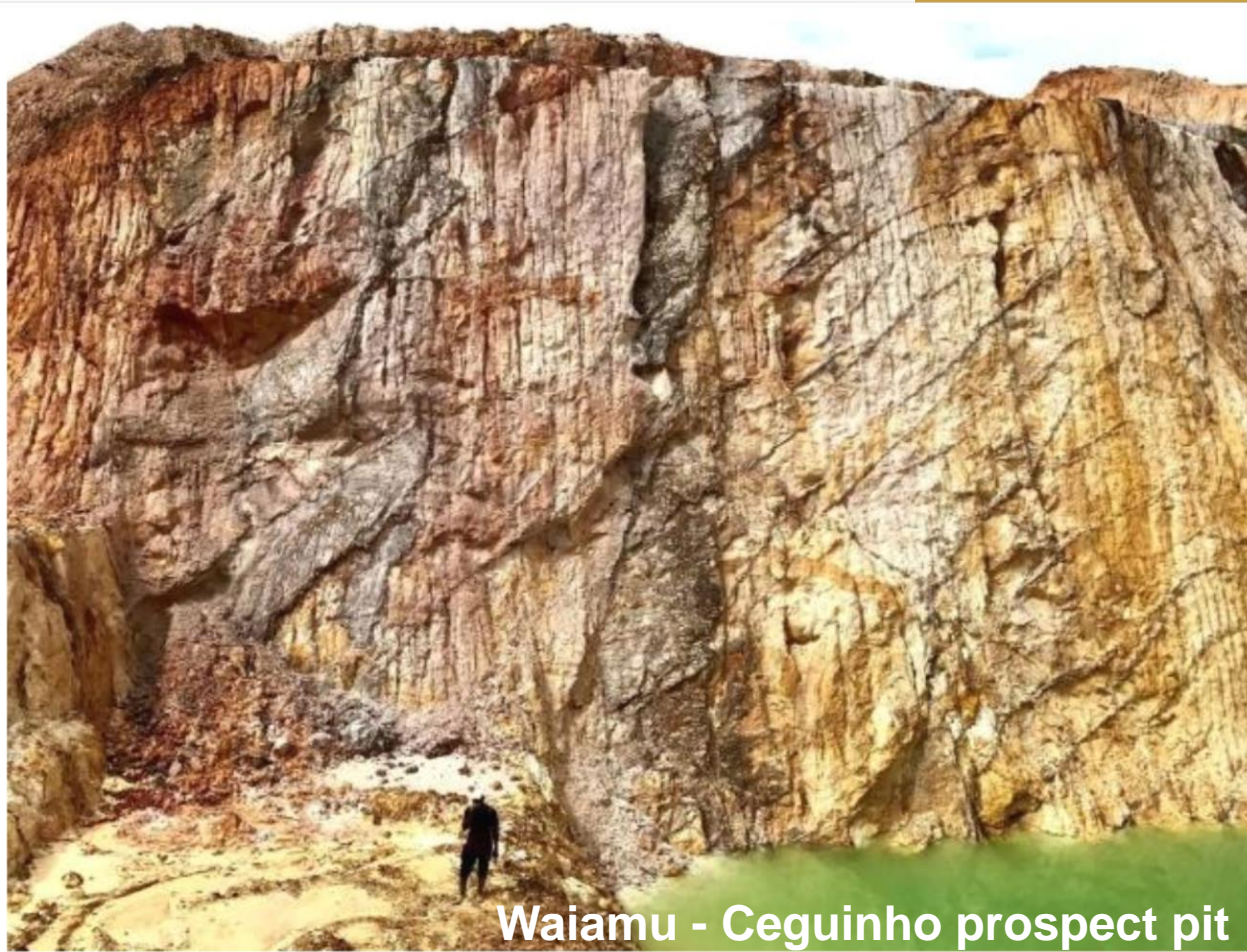






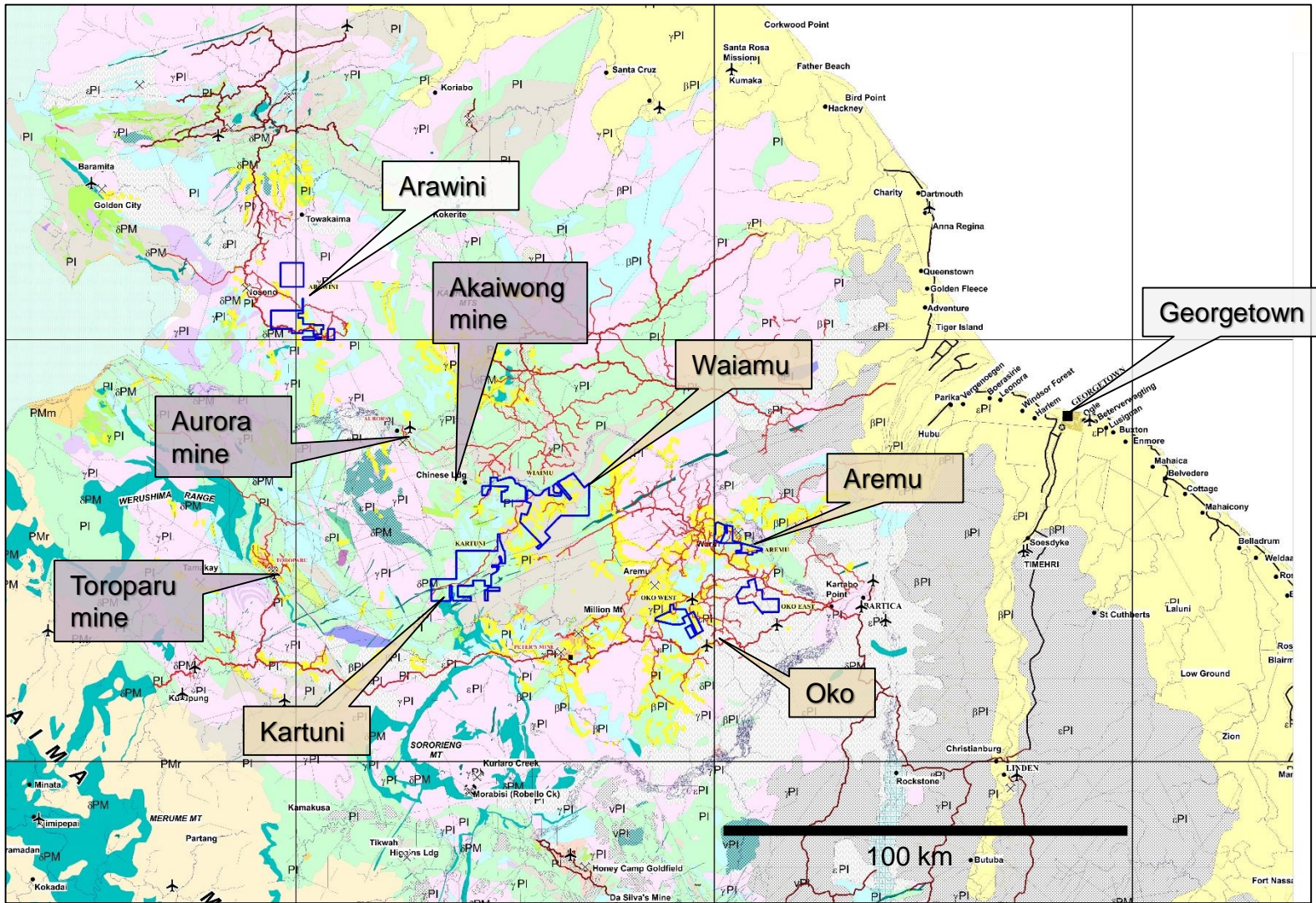


St-Michel Prospect – Drill cross section 190N



Waiamu - Ceguinho prospect pit

Waiamu Gold Project Guyana



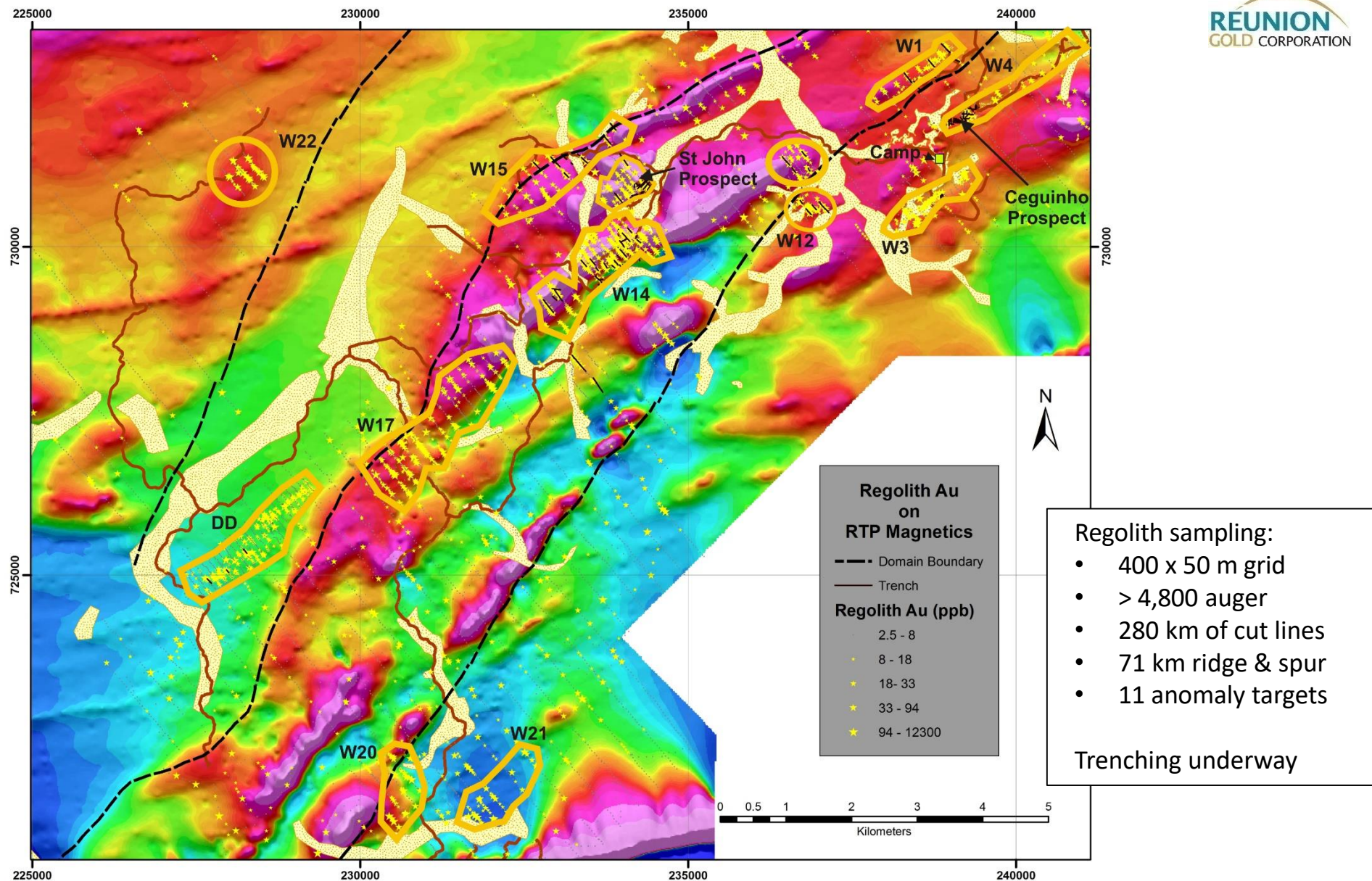
Guyana - Projects Location

- Option to acquire a 100% interest in the Waiamu Project.
- Part of Strategic Alliance with Barrick.
- Waiamu with a total surface of 57,346 acres, is located along Cuyuni river, 130 km W of Georgetown. Access bush road from the seaport of Bartica and by boat.
- Small scale miners bulk mining quartz vein “swarms” in volcano-sedimentary sequence. Gold mineralization similar to Rosebel/Merian mines in Suriname.



Waiamu Gold Project - 2019

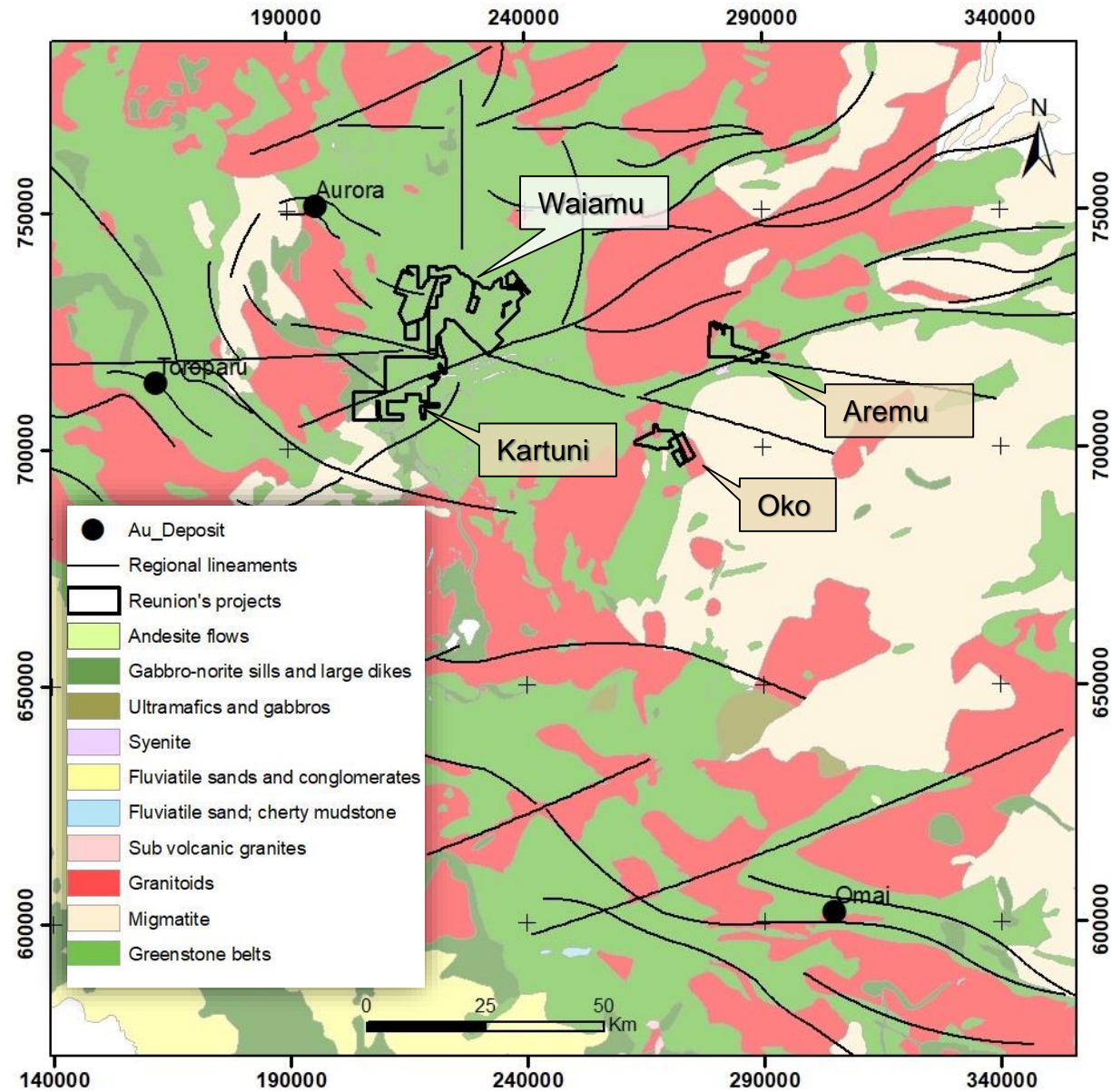
Q1	Q2	Q3	Q4
Drilling			Drilling
	Trenching and sampling		Trenching and sampling
		Geochem W areas	



Waiamu - Magnetometry and regolith gold anomalies

Aremu - Oko – Kartuni Projects

- Projects under Strategic Alliance with Barrick
- Reunion is launching (Sep. 2019) comprehensive exploration programs including:
 - Airborne mag/radiometry
 - Stream sediment geochemistry
 - Geological mapping
 - Regolith geochemistry
 - Sampling of artisanal workings
- All project areas have extensive artisanal gold workings.
- Access by river and laterite roads.



Contact Information

For more information visit our website at
www.reuniongold.com

or

Contact us directly:

Rejean Gourde, President and CEO
David Charles CFA, Manager Investor Relations

E: info@reuniongold.com

T: +1 450 677 2585