



BOOK OF COMFORT 1963/4

PARKER-KNOLL





PK 938 'Malton'

A full-sized easy chair. The moulded plastic shell base for this model has allowed a pleasant sculptured feeling in the design.





◀ PK 945 'Andante' (without arms)
PK 947 'Adagio' (with arms)

PK 720 'Penshurst'

CONTENTS

- Page 2
Introduction
- Pages 4-23
Illustrations of models
- Pages 24-25
The Parker Collection
- Pages 26-27
Dimensional drawings
- Pages 28-29
Prices
- Page 30
Addresses
- Page 31
After-sales service
- Pages 32-33
Parker-Knoll Textiles
and Wood Finishes

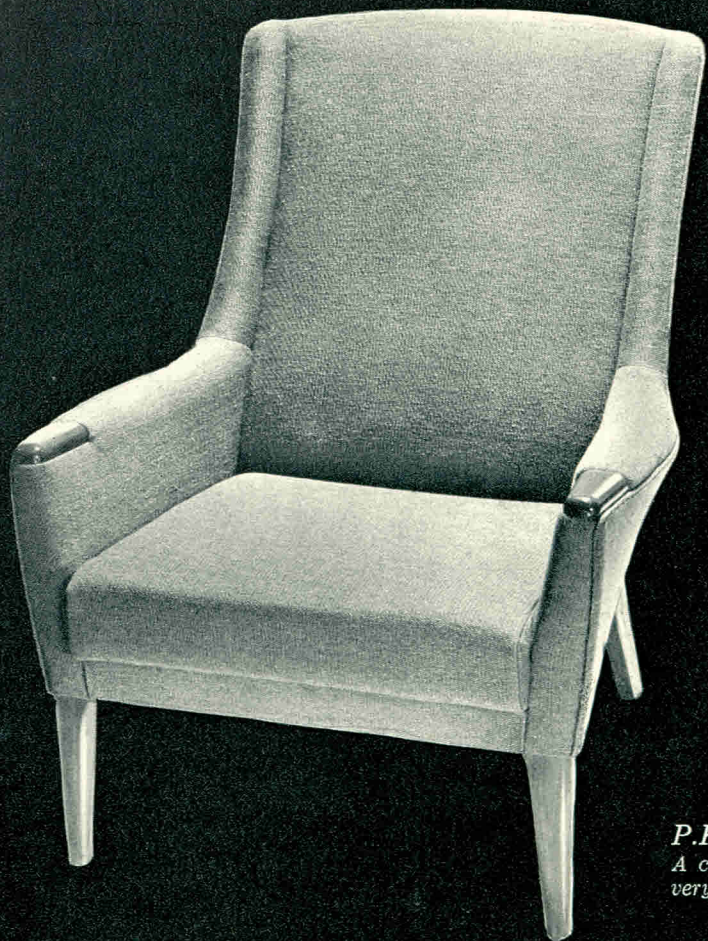
PARKER-KNOLLEDGE

Recently conning through the 13th edition of the *Encyclopaedia Britannica*, Vols 5-6, CALHO TO CONST, our eyes alighted on 'CHAIR'. This, we learnt, is 'a movable seat, usually with four legs, for a single person'. Married persons presumably just stood about looking awkward. We further learned that, 'for thousands of years, the chair was an appanage of state and dignity rather than an article of ordinary use'.

On the following pages you will find Parker-Knoll appanages of state and dignity to suit every taste, every room and every budget—and by no means confined to the use of single persons. A number of models will take three comfortably at one sitting.

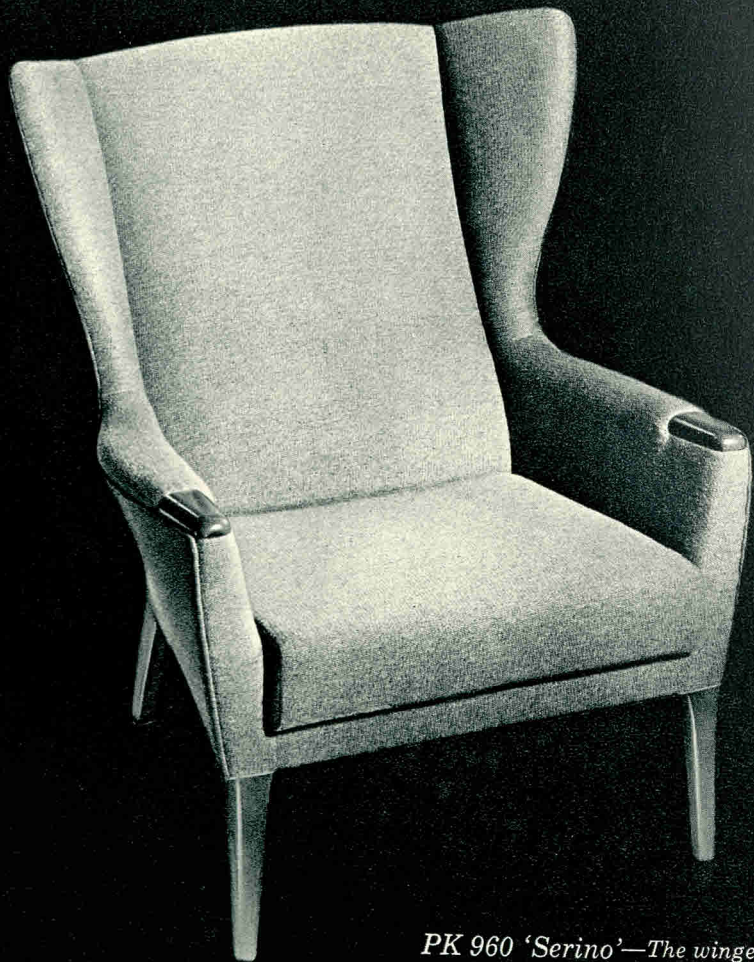
Wood finishes can be coloured to your precise requirements and there is a wide choice of coverings.

There is sure to be a good choice of Parker-Knolls at your local furnisher's, and the full range can always be seen at any of our showrooms. These are listed at the end of the book.



P.K. 961 'Siena'

*A compact, comfortable model and
very reasonably priced.*



PK 960 'Serino'—The winged version of the PK 961 Siena.



◀ PK 954 'Ravenna' (low back)
PK 955 'Fabriano' (high back) ▶

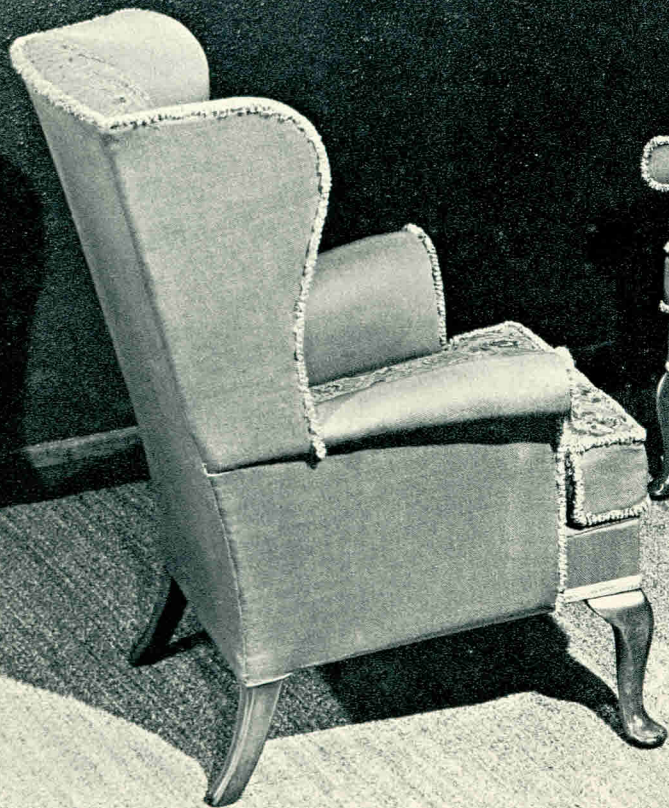
These two models make a most attractive combination, reflecting contemporary comfort at its best. Important design features include double-frame construction for extra strength and particularly elegant arms.



'Gavotte' Suite

Settee PK 935 Chair PK 936

Full-size, fully upholstered comfort with sprung edge. Very compact and mobile, it is raised off the floor to give ample clearance for your sweeper.





PK945 'Andante' (without arms)
PK947 'Adagio' (with arms)



PK 749 'Froxfield'

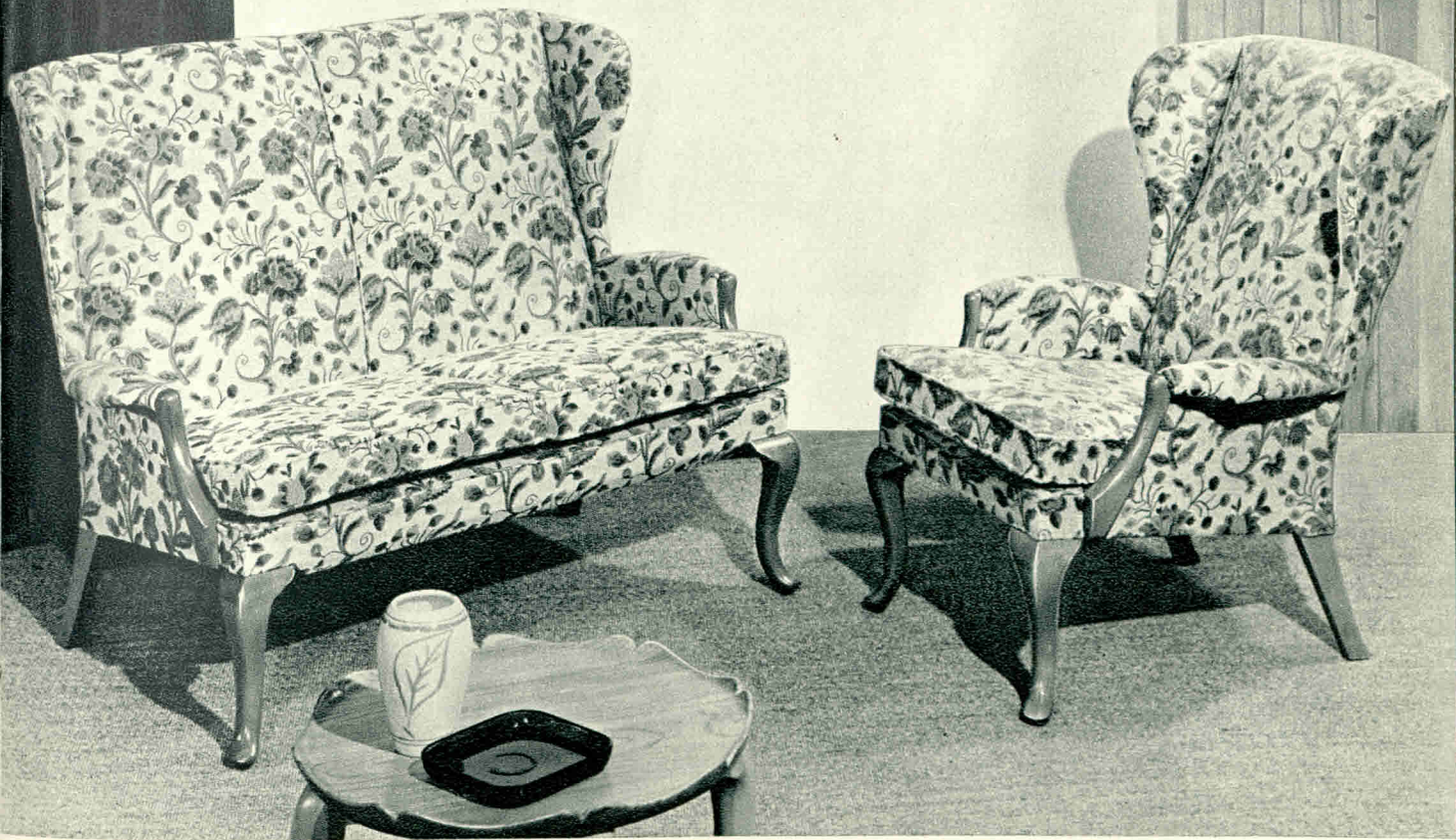
Outward curving arms are an attractive feature of this model.

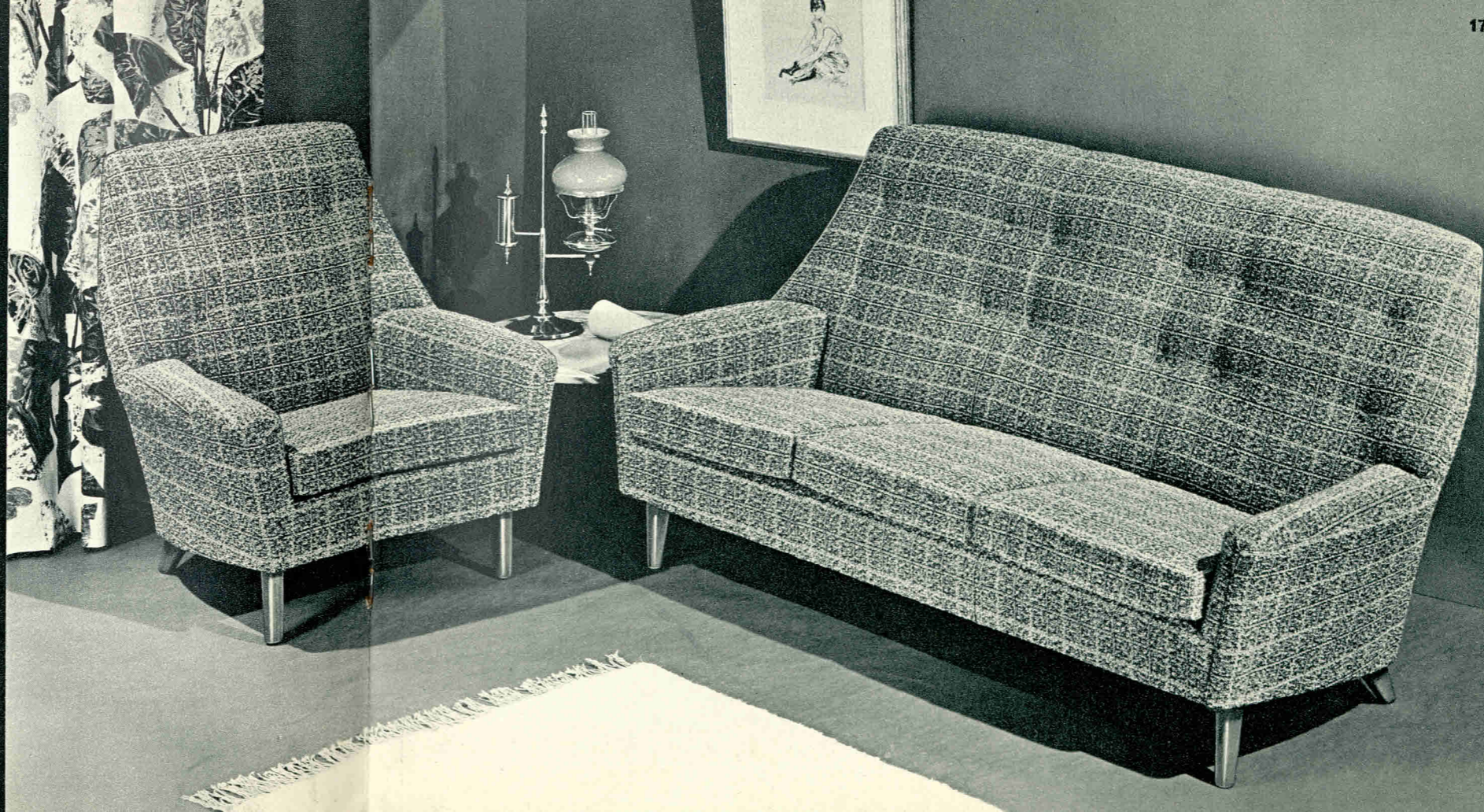
PK 918 'Kedelston'

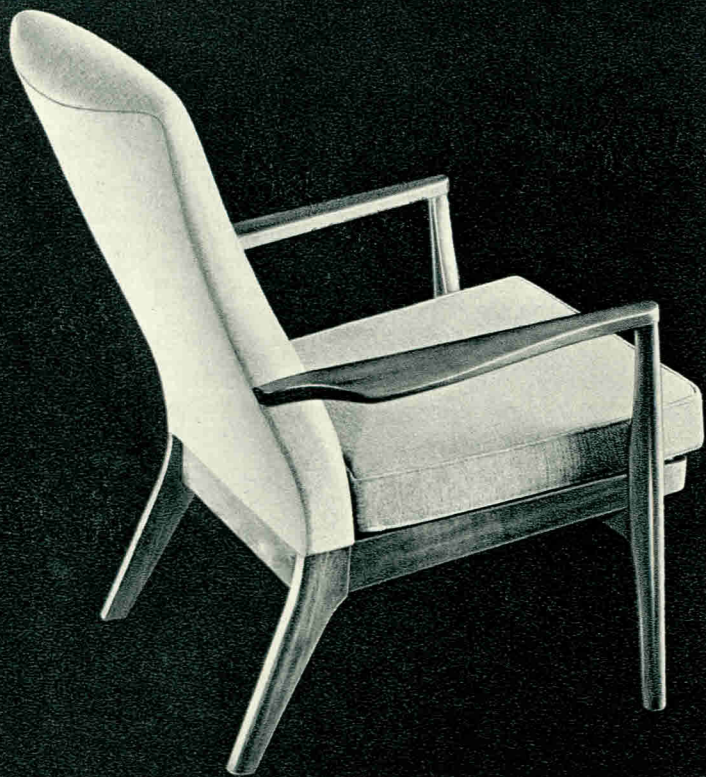
A splendid example of winged comfort and elegance. ▶

PK 919 'Knebworth'

The settee version of the 'Kedelston'. Fully sprung front edge. ▶

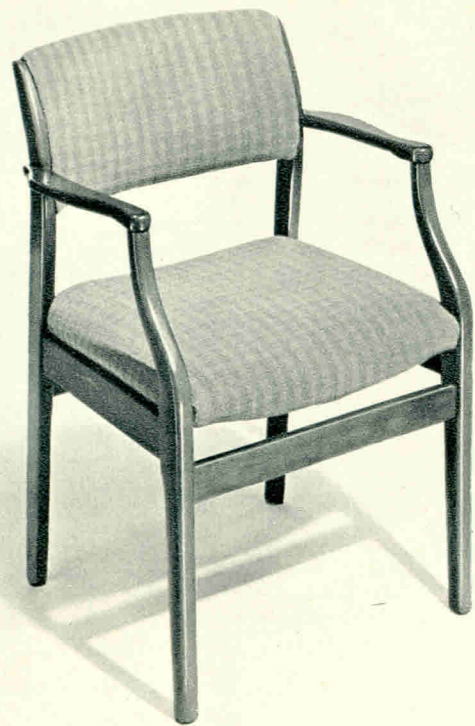


*Giovanni Suite**Chair: P.K. 970 Settee: P.K. 971**A splendid example of compact, modern comfort. ▶
The settee has a fully sprung front edge.*



◀ *P.K. 973 'Ringwood'*
Fireside comfort at a very reasonable price.
Note the graceful shaping of the arms.

P.K. 974 'Rockwood'
 A rocking chair version of the 'Ringwood'. ▶



PK 751 'Roslin'
 A pleasantly designed dining chair. Also available without arms: PK752 'Oban'.



*PK 966 'Amesbury'
This is the wingless version
of the 'Ainsdale'.*



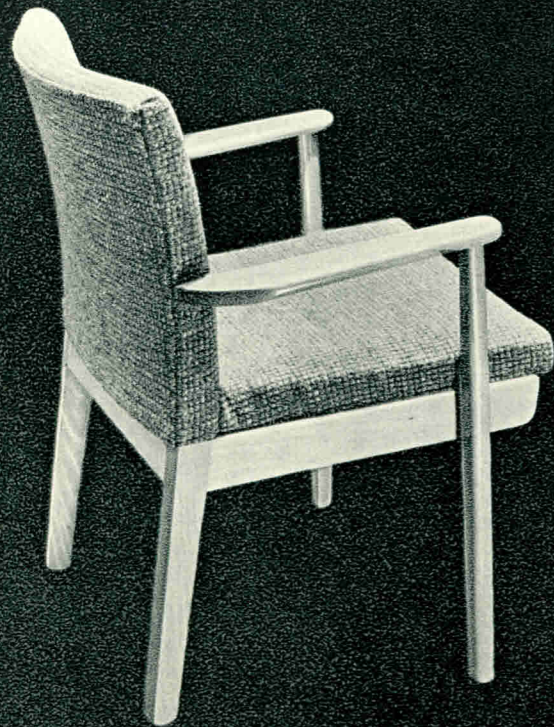
*PK 964 'Abinger'
Comfort and simplicity are
combined in this chair giving
excellent back support.
Also available with arm pads as illustrated on the right. ▶*



PK 965 'Abinger'



*PK 967 'Ainsdale'
The traditional comfort of a
wing chair in a contemporary design.*



PK 733 'Langford'

A sturdy occasional chair—ideal for hotels, clubs and restaurants.

PK 928 'Highworth'

This considerate armchair is specially designed to appeal to seniors. It offers good head and lumbar support enabling them to sit upright in perfect comfort and to get up without the aid of a helping hand. Seat height: 20 $\frac{1}{4}$ ".

Also available with arm pads PK 958



PK 929 'Highwing'

A version of PK 928 'Highworth' with upholstered wings for added comfort.

Also available with arm pads PK 959



PK 747 'Newlyn'

A chair of classic simplicity that allows complete freedom of movement.



THE PARKER COLLECTION

Frederick Parker (1845-1927), founder of the firm, believed that the study of "Old Masters" was the only sound basis for all design and craftsmanship.

Accordingly he started to collect types of classical furniture, so that their intimate study might inspire the creation of good contemporary furniture.

In this enterprise he was assisted by his sons, later to become Directors of Parker-Knoll.

This collection begun in the 'nineties now numbers several hundreds of chairs, settees and pieces of carving, besides thousands of plaster casts, needlework and fragments of tapestry—all original examples.

Part of the collection (it is too large to display in its entirety) is on view at Temple End. Designers, craftsmen, salesmen, in fact all who are interested in historical furniture, are invited to visit it any day during office hours, Saturday excepted.

1 *About 1765: Very rare mahogany and yew Windsor armchair of fine proportions. The curved centre splat, seat, and legs being of mahogany, the arms and spindles of yew.*

2 *About 1770: Finely proportioned mahogany Hepplewhite armchair, the carving and shape showing the high degree of skill of the craftsman who made it.*

3 *About 1725: An unusual mahogany George I side chair with gilded ornamentation on the legs. Notice the concave shaping at the back made to receive a man's tie wig.*

4 *About 1790: Fine example of a painted Sheraton side chair with circular seat.*

5 *About 1690: Interesting William and Mary walnut 'X' frame armchair, cane back.*

6 *About 1720: Very fine Mahogany George I barber's chair, the splay terminating in a periwinkle scroll and with bold arms.*



1



2

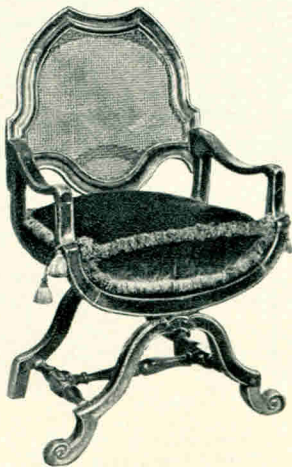


25

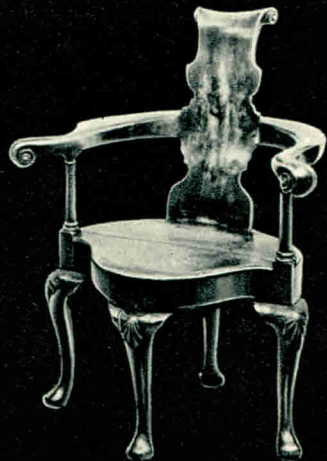
3



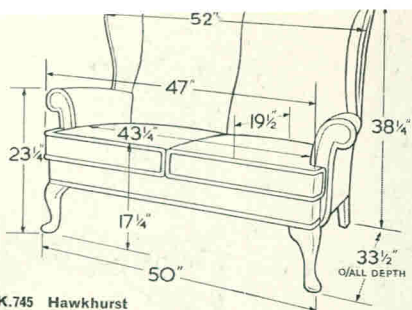
4



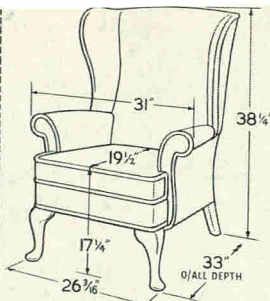
5



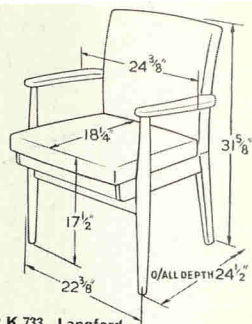
6



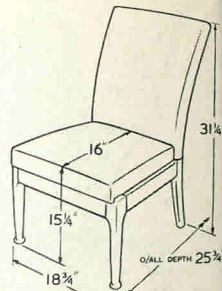
P.K.745 Hawkhurst



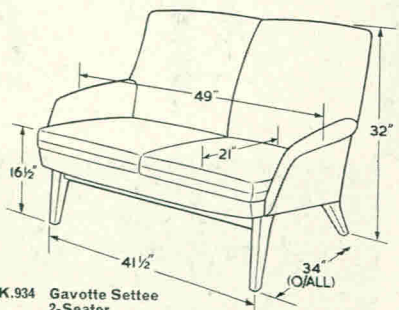
P.K.720 Penshurst



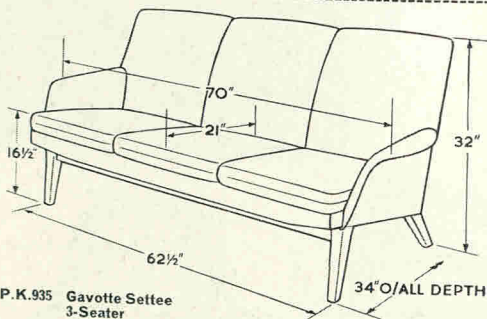
P.K.733 Langford



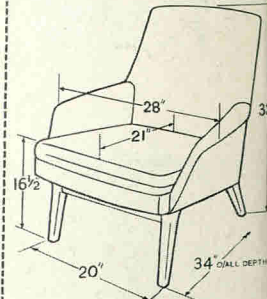
P.K.747 Newlyn



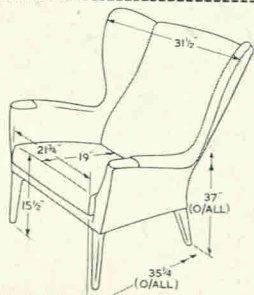
P.K.934 Gavotte Settee
2-Seater



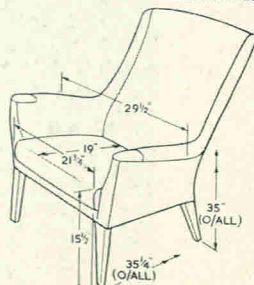
P.K.935 Gavotte Settee
3-Seater



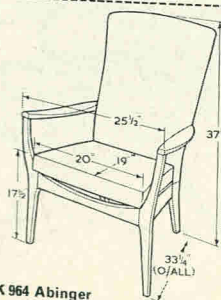
P.K.936 Gavotte Chair



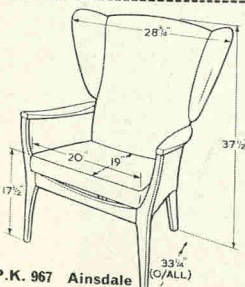
PK 960 Serino



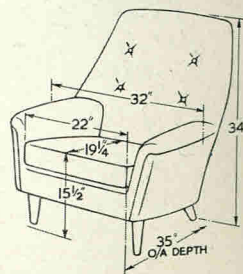
PK 961 Siena



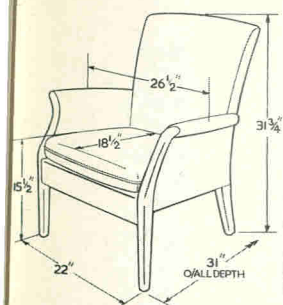
PK 964 Abinger
PK 965 Abinger (with padded arms)



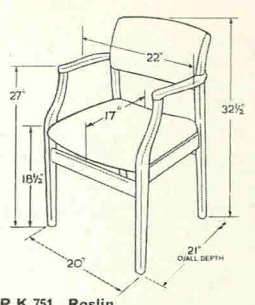
P.K. 967 Ainsdale
PK.966 Amesbury
(without wings)



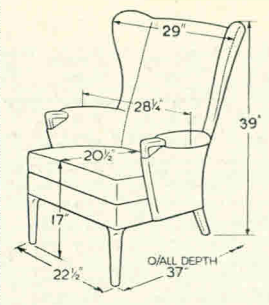
PK 970 Giovanni Chair



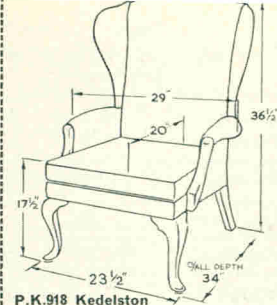
P.K.749 Froxfield



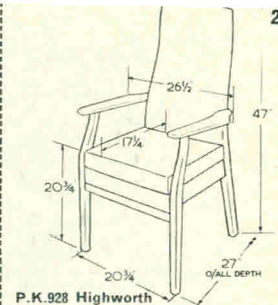
P.K.751 Roslin
P.K.752 Oban (without arms)



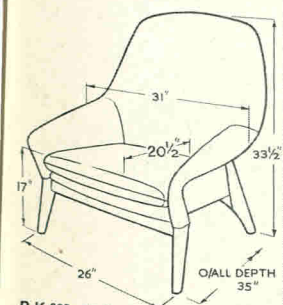
P.K.757 Wingfield



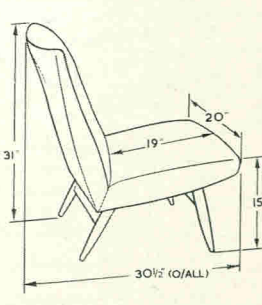
P.K.918 Kedelston
P.K.919 Knebworth (settee to match)



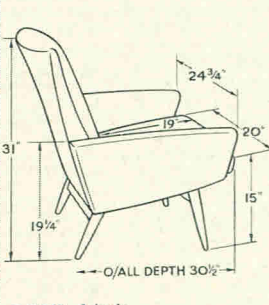
P.K.928 Highworth
P.K.929 Highwing (with wings)



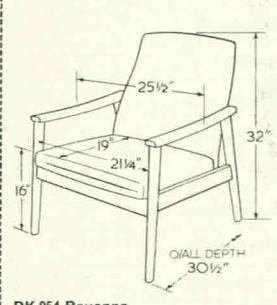
P.K.938 Malton



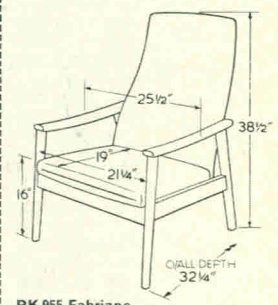
P.K.945 Andante



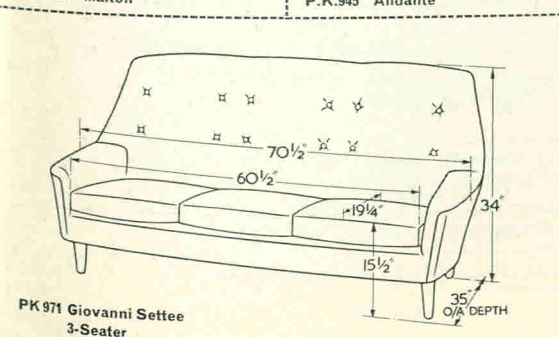
P.K.947 Adagio



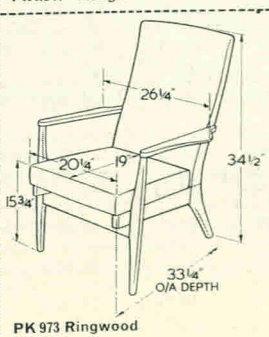
PK 954 Ravenna



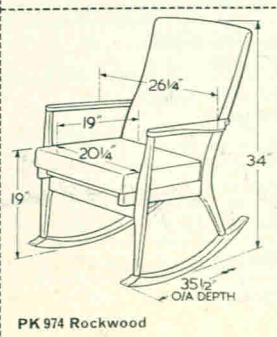
PK 955 Fabriano



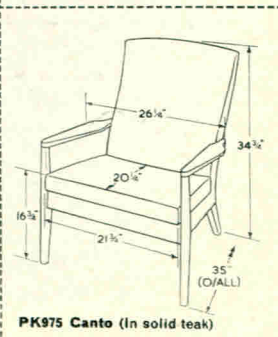
PK 971 Giovanni Settee
3-Seater



PK 973 Ringwood



PK 974 Rockwood



PK 975 Canto (In solid teak)

Page No.	Model	Name	Cover "B"	Cover "A"	Cover "S"	Cover "P"	Yardage		Own Cover Price	Finishes
							31"	50"		
I.F.C.										
11	P.K.720	Penshurst	★	£ s. d. 29 15 0	£ s. d. 35 15 0	£ s. d. 39 10 0	7	4½	£ s. d. 29 5 0	<p>All models, with the exceptions noted below are available in a choice of the following standard finishes:—</p> <p>Natural Beech Mahogany Light Walnut Walnut Dark Rosewood Light Mahogany Teak Ebonised finish</p> <p>P.K. 720 & P.K. 745 The Penshurst wing chair and matching Hawkhurst settee are normally supplied in a special antique Walnut finish, but all the above finishes are available if required.</p>
10	P.K.720	Penshurst	Vanbrugh panel with Ruche			44 15 0	—	—	—	
22	P.K.733	Langford	★	11 15 0	12 19 6	13 19 6	2½	1½	11 12 6	
—	P.K.745	Hawkhurst	★	57 0 0	64 10 0	71 10 0	12	6½	56 0 0	
10	P.K.745	Hawkhurst	Vanbrugh panel with Ruche			74 15 0	—	—	—	
23	P.K.747	Newlyn	★	11 8 6	12 19 6	14 8 6	2½	1½	10 15 0	
14	P.K.749	Froxfield	★	20 19 0	23 15 0	26 15 0	5	2½	19 10 0	
19	P.K.751	Roslin	★	11 8 6	12 5 0	13 0 0	1½	¾	11 5 0	
—	P.K.752	Oban	★	10 18 6	11 15 0	12 10 0	1½	¾	10 15 0	
12	P.K.757	Wingfield	★	29 10 0	34 10 0	38 10 0	7½	4½	29 0 0	
15	P.K.918	Kedelston	★	27 15 0	32 15 0	35 15 0	7½	3½	26 5 0	
15	P.K.919	Knebworth	★	51 10 0	56 10 0	61 10 0	11½	5½	47 15 0	
22	P.K.928	Highworth	★	17 16 0	19 18 0	22 0 0	4	2	17 10 0	
23	P.K.929	Highwing	★	22 0 0	24 10 0	26 18 6	5½	2½	21 12 6	
8 & 9	P.K.935/6	Gavotte Suite	†	†	106 18 0	119 0 0	—	—	103 10 0	
—	P.K.934	Gavotte Settee 2-Seater	†	†	46 0 0	56 0 0	9½	5	44 15 0	
8 & 9	P.K.935	Gavotte Settee 3-Seater	†	†	53 18 0	60 0 0	13	6½	52 0 0	
8	P.K.936	Gavotte Chair	†	†	26 10 0	29 10 0	5½	3	25 15 0	
13	P.K.945	Andante	★	14 18 6	16 15 0	18 17 0	2½	1½	14 13 0	
13	P.K.947	Adagio	★	20 19 0	23 15 0	26 15 0	4½	2½	20 10 0	
6	P.K.954	Ravenna	★	16 15 0	18 17 0	20 19 0	3½	1½	16 10 0	
7	P.K.955	Fabriano	★	17 16 0	19 18 0	22 0 0	3½	2	17 10 0	

Page No.	Model	Name	Cover "B"	Cover "A"	Cover "S"	Cover "P"	Yardage		Own Cover Price	Finishes	
							Own	Cover			
			£ s. d.	£ s. d.	£ s. d.	£ s. d.	31"	50"	£ s. d.		
—	P.K.958	P.K.928 Highworth with arm pads	★	19 18 0	22 0 0	24 2 0	4½	2½	19 12 0	All models, with the exceptions noted below are available in a choice of the following standard finishes:— Natural Beech Mahogany Light Walnut Walnut Dark Rosewood Light Mahogany Teak Ebonised finish	
—	P.K.959	P.K.929 Highwing with arm pads	★	24 2 0	26 12 0	29 0 0	6	3	23 12 6		
4	P.K.960	Serino		22 10 0	24 10 0	27 10 0	30 10 0	6½	3½		22 0 0
3	P.K.961	Siena		22 10 0	24 10 0	27 10 0	30 10 0	6½	3½		22 0 0
20	P.K.964	Abinger		13 12 0	14 13 0	16 15 0	18 17 0	3½	2		13 7 6
21	P.K.965	Abinger with arm pads		15 14 0	16 15 0	18 17 0	20 19 0	4½	2½		15 7 6
20	P.K.966	Amesbury		16 15 0	17 16 0	19 18 0	22 0 0	5½	2½		16 7 6
19	P.K.967	Ainsdale		18 17 0	20 10 0	24 10 0	27 10 0	6½	3½		18 7 6
16 & 17	P.K.970/1	Giovanni Suite	†	†	129 0 0	143 0 0	—	—	112 10 0		
16	P.K.970	Giovanni Chair	†	†	30 10 0	33 10 0	—	3½	26 15 0		
17	P.K.971	Giovanni Settee	†	†	68 0 0	76 0 0	—	8½	59 0 0		
18	P.K.973	Ringwood		11 19 6	14 2 6	15 14 0	17 16 0	3½	1½	11 16 0	
19	P.K.974	Rockwood		13 19 6	16 2 6	17 14 0	19 16 0	3½	1½	13 16 0	
5	P.K.975	Canto	★	21 10 0	23 10 0	25 10 0	5½	2½	21 12 6		
LIMITED EDITION MODEL											
1	P.K.938	Malton	Teak, English Walnut or Rosewood. Only plain covers are suitable for this design.		40 15 0	46 0 0	—	4	40 5 0		

IMPORTANT—add proportionate quantity if your material is less than 50" or 31" wide.

There will be an extra charge for using own hide or own leather cloth.

★ "B" covers are not normally supplied on these models, but if specifically requested they can be supplied at the "A" cover price.
† "A" and "B" covers are not normally supplied on these models, but if specifically requested they can be supplied at the "S" cover price.

Our programme of continuous development makes it necessary for us to reserve the right to revise, without notice, price and detail specifications.

1st January 1964.

PARKER-KNOLL LIMITED

Sales Office

The Courtyard, Frogmoor, High Wycombe, Bucks.
Telephone: High Wycombe 4000

Showrooms

LONDON: 19/20 Berners Street, W1

MANCHESTER: 33 King Street

BRISTOL: 35 Park Street

BIRMINGHAM: 43 Temple Street

HIGH WYCOMBE: The Courtyard, Frogmoor

Subsidiary Companies

PARKER-KNOLL TEXTILES LTD.

Sales Office & Warehouse:

Parkertex House,

West End Road, High Wycombe, Bucks.

Telephone: High Wycombe 2301.

Showrooms

Parkertex House, 28 Berners Street, London, W 1

Telephone: Langham 8087

FREDERICK PARKER & SONS LTD.,

Temple End, High Wycombe, Bucks.

PARKER TEXTILES LTD.,

Temple End, High Wycombe, Bucks.

CORNWELL-NORTON LTD.,

23, Frogmoor, High Wycombe, Bucks.

Telephone: High Wycombe 4634

PARKER-KNOLL FRANCE (S.A.R.L.),

66, Rue Maurice Gunsbourg, Ivry (Seine)

Telephone: Capital Italie 78-79

LICENSEES

AFRICA

West Africa

C.F.C. Furniture Co. (West Africa) Ltd., P.O. Box 282, Ring Road, Accra, GHANA.

C.F.C. Furniture Co. (West Africa) Ltd., P.O. Box 42, Mushin, Lagos, Nigeria.

C.F.C. Furniture Co. (West Africa) Ltd., P.O. Box 501 27 Garrison Street, Freetown, Sierra Leone, British West Africa.

C.F.C. Furniture Co. (Eastern Nigeria) Ltd., P.O. Box 181, Port Harcourt, Eastern Nigeria.

C.F.C. Furniture Co. (Northern Nigeria) Ltd., P.O. Box 197, Kaduna, Northern Nigeria.

Kenya

Kenya Industrial Corporation, P.O. Box 210, Mombasa.

Rhodesian Federation

Springmaster Corporation, (S.R.) (Pvt) Ltd., Lisburn Road, Workington Industrial Sites, Salisbury, Southern Rhodesia.

Branch factories at Bulawayo and Ndola, N.R.

Republic of South Africa

Rand Upholsterers (Pty) Limited, P.O. Box 4317, Johannesburg.

ASIA

Hong Kong: Lane Crawford & Company, P.O. Box 83, Hong Kong.

India: Spencer & Co. Limited, Mount Road, Madras.

Malaya: Robinson & Company, Raffles Place, Singapore.

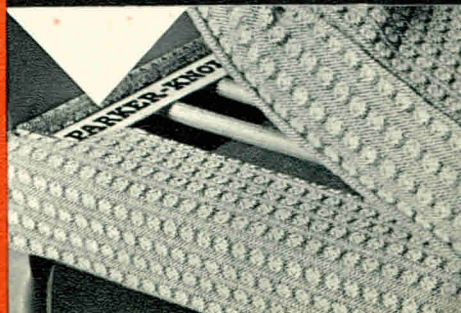
AUSTRALASIA

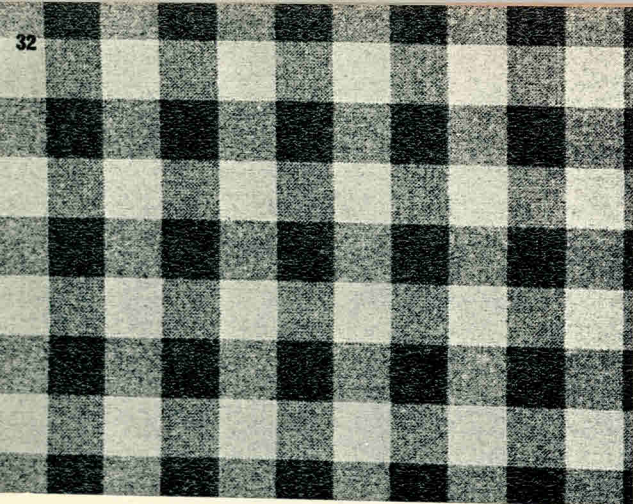
New Zealand

Hugh J. Eaton Limited, 18-20 Patrick Street, Te Pepapa, Auckland, S.E.S

Our interest in Parker-Knoll chairs and settees is never lost when we sell them. We know how attached people get to 'old favourites'. When we are asked if we can rejuvenate or re-cover a Parker-Knoll—no matter how many years of faithful service it has given—the answer is always 'yes', and the result is usually 'as good as new'.

To identify a genuine Parker-Knoll, simply lift the seat cushion and look for the Parker-Knoll name-tape that runs along the frame. This applies to all but a few fixed seat models.

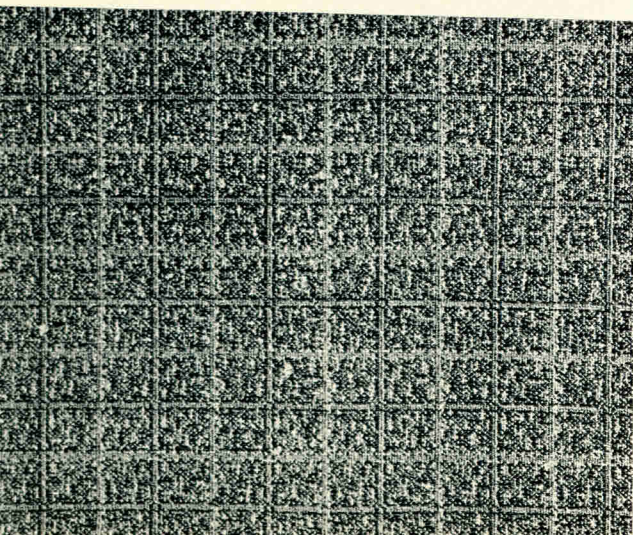




Crossways

Left NORWICH: Design adapted from an early 18th Century French Altar Cloth in our Collection.

Right BODIAM: Design derived from an 18th Century English needlework.



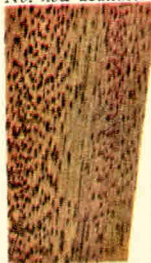
PARKER-KNOLL TEXTILES

For the style of a particular chair, Parker-Knoll create a perfectly matching fabric—sometimes original in design, sometimes inspired by old documents, prints and needleworks in the Parker-Knoll Collection. Did you know that you can also buy additional lengths of these fabrics for curtains, cushions, or covers for the rest of your furniture? You can dress any room in your home with the elegance of P.K. fabrics. They need not be expensive—the range runs from the modestly priced 'B' grade fabrics, through 'A' and 'S' grades, to sumptuous 'P' grade materials. Ask your Parker-Knoll dealer for full details.

Orkney



Not now available



Dark
Rosewood

Mahogany

Walnut

Teak

Light
Mahogany
(PK 731,749)

Light
Mahogany

Light
Walnut

Natural
Beech

HERE IS THE STANDARD RANGE OF WOOD FINISHES

FPBXCS/7/1



PARKER-KNOLL

CHAIRS AND SETTEES