



SAS Publishing



# **SAS/ACCESS<sup>®</sup> 9.1**

## **Interface to R/3**

### User's Guide

The correct bibliographic citation for this manual is as follows: SAS Institute Inc. 2004. *SAS/ACCESS® 9.1 Interface to R/3: User's Guide*. Cary, NC: SAS Institute Inc.

**SAS/ACCESS® 9.1 Interface to R/3: User's Guide**

Copyright © 2004, SAS Institute Inc., Cary, NC, USA

ISBN 1-59047-203-9

All rights reserved. Produced in the United States of America. No part of this publication may be reproduced, stored in a retrieval system, or transmitted, in any form or by any means, electronic, mechanical, photocopying, or otherwise, without the prior written permission of the publisher, SAS Institute Inc.

**U.S. Government Restricted Rights Notice.** Use, duplication, or disclosure of this software and related documentation by the U.S. government is subject to the Agreement with SAS Institute and the restrictions set forth in FAR 52.227-19 Commercial Computer Software-Restricted Rights (June 1987).

SAS Institute Inc., SAS Campus Drive, Cary, North Carolina 27513.

1st printing, January 2004

SAS Publishing provides a complete selection of books and electronic products to help customers use SAS software to its fullest potential. For more information about our e-books, e-learning products, CDs, and hard-copy books, visit the SAS Publishing Web site at [support.sas.com/pubs](http://support.sas.com/pubs) or call 1-800-727-3228.

SAS® and all other SAS Institute Inc. product or service names are registered trademarks or trademarks of SAS Institute Inc. in the USA and other countries. ® indicates USA registration.

Other brand and product names are registered trademarks or trademarks of their respective companies.

---

# Contents

*What's New* v

Overview v

Details v

## **Chapter 1** △ **How to Use This Document** 1

Introduction 1

Audience 1

## **Chapter 2** △ **Overview** 3

Introduction 3

Getting Started with the SAS/ACCESS Interface to R/3 3

Searching R/3 Metadata 5

Exporting R/3 Metadata to SAS/Warehouse Administrator 7

## **Chapter 3** △ **Accessing and Using R/3 Data** 11

Introduction 11

Accessing Data Using Direct Access and ODBC 11

Accessing Data Using the SAS/ACCESS Interface to R/3 11

## **Chapter 4** △ **Using the SAS/ACCESS Interface to R/3** 15

Introduction 16

Using the Logon Utility 16

Using the Local Setup Utility 22

Using the Datamodel Explorer 25

Using the List of R/3 Tables 47

Using the List of Descriptors 48

Using the Search Metadata Utility 51

Performing Batch Operations 53

## **Chapter 5** △ **Using the RFC Server** 57

Overview of the RFC Server 57

ABAP Function Modules and Programs 58

Using the RFC Server on UNIX 58

Using the RFC Server on Windows NT 60

Using the RFC Server in Batch Mode 61

Using the RFC Macros and Macro Variables 62

Using the R/3 BAPI Connector: Logon Window 73

## **Chapter 6** △ **Using the LIBNAME Statement for SAP** 75

Overview of the LIBNAME Engine for SAP 75

LIBNAME Statement Syntax for SAP 75

SAP LIBNAME Engine Options 76

SAS LIBNAME Statement Options for the SAP Engine 85

SAS Data Set Options for the SAP Engine 90

Examples 93

**Appendix 1  $\triangle$  Recommended Reading 95**

Recommended Reading 95

**Glossary 97**

**Index 101**

# What's New

---

## Overview

---

The new features and enhancements for the SAS/ACCESS Interface to R/3 include

- a simplified logon process that does not require CPI-C parameters to be used.
- SAP transport files that simplify the installation of the required ABAP function modules and programs.
- an updated RFC server that supports two operation modes for extracting data from your SAP R/3 system.
- a new SAP LIBNAME engine that enables you to access tables and views from SAP R/3 and SAP BW systems through a connection to the SAS RFC server.
- the ability to use the %CALLRFC macro to call RFC enabled ABAP functions.

## Details

---

- SAP transport files that you can use to install the ABAP function modules and programs are now included in the SAS/ACCESS Interface to R/3. It is recommended that you import the SAP transport files rather than installing the ABAP function modules and programs manually. For more information about using SAP transport files and installing ABAP function modules and programs, see the *Installation Instructions for SAS/ACCESS Interface to R/3*.

The new RFC server and RFC dialog server no longer use the following ABAP function modules and programs which were previously used:

- **Z\_SAS\_BATCH\_INTERFACE\_4**
- **Z\_SAS\_READ\_TABLE\_CPIC**
- **ZSASRDTB**
- **ZSASRDBT**

*Note:* The transport files for the SAS/ACCESS Interface to R/3 require different ABAP function modules and programs than the transport files for the SAS/ACCESS Interface to SAP BW. Ensure that you use the correct files when you install your application. △

- In previous versions of the SAS/ACCESS Interface to R/3, the logon utility required that CPI-C parameters be entered when logging on to your R/3 system. Now, the CPI-C parameters are no longer used when you log on to your R/3 system. The logon utility enables you to access the following windows in which you will need to enter your logon parameters:

- Logon to R/3 window
- Advanced Parameters window

For more information about the logon process, see “Using the Logon Utility” on page 16.

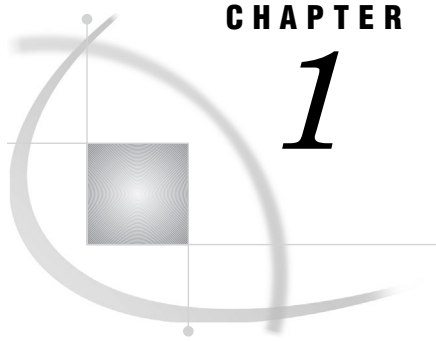
- The SAS RFC server has been updated. The RFC server command line syntax has been modified for UNIX and Windows NT . For more information, see “Using the RFC Server on UNIX” on page 58 and “Using the RFC Server on Windows NT” on page 60.
- The new SAP LIBNAME engine is a read-only engine that enables you to access tables and views from SAP R/3 and SAP BW systems. The SAP LIBNAME engine accesses an SAP system through a connection to the SAS RFC server and is part of the SAS solution to access data in an SAP system.

The SAP LIBNAME engine supports new features such as load balancing, user validation at logon, more efficient handling of projections, and server-side joins. Directory processing is also supported.

*Note:* Unlike other LIBNAME engines in SAS, these interfaces are read-only and do not support any forms of data set creation, deletion, or modification. △

For more information about the new SAP LIBNAME engine, see “Overview of the LIBNAME Engine for SAP” on page 75.

- The new CALLRFC procedure, which is used internally by the %CALLRFC macro, enables you to call RFC enabled ABAP functions. The CALLRFC procedure uses the RFC server to communicate with the SAP system.

**CHAPTER****1****How to Use This Document**

---

*Introduction* 1

*Audience* 1

---

**Introduction**

*SAS/ACCESS® 9.1 Interface to R/3: User's Guide* describes the SAS/ACCESS Interface to R/3 from SAP AG. It provides primary support for the SAS/ACCESS 9.1 Interface to R/3.

---

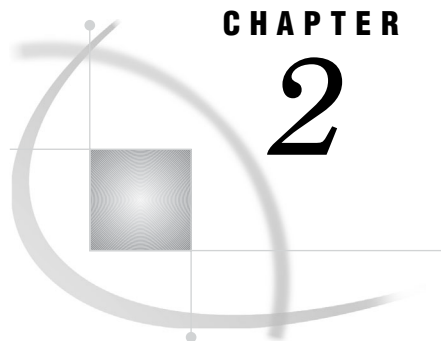
**Audience**

This document is intended for applications programmers and other users who are comfortable with their own operating environment and are reasonably familiar with either SAS or with R/3. It is assumed that users are completely unfamiliar with using both of the systems together. The glossary provides definitions of terms that might be new to a user who is unfamiliar with either system.

This document provides tutorial instruction for a novice user of the SAS/ACCESS Interface to R/3. After you have mastered the tutorial, you can use this document for reference.







## CHAPTER

## 2

## Overview

---

*Introduction* 3

*Getting Started with the SAS/ACCESS Interface to R/3* 3

*Searching R/3 Metadata* 5

*Exporting R/3 Metadata to SAS/Warehouse Administrator* 7

---

## Introduction

This chapter provides a brief introduction to the SAS/ACCESS Interface to R/3. For more detailed information, consult the references that are listed in “Recommended Reading” on page 95 or contact your SAS Support Consultant.

---

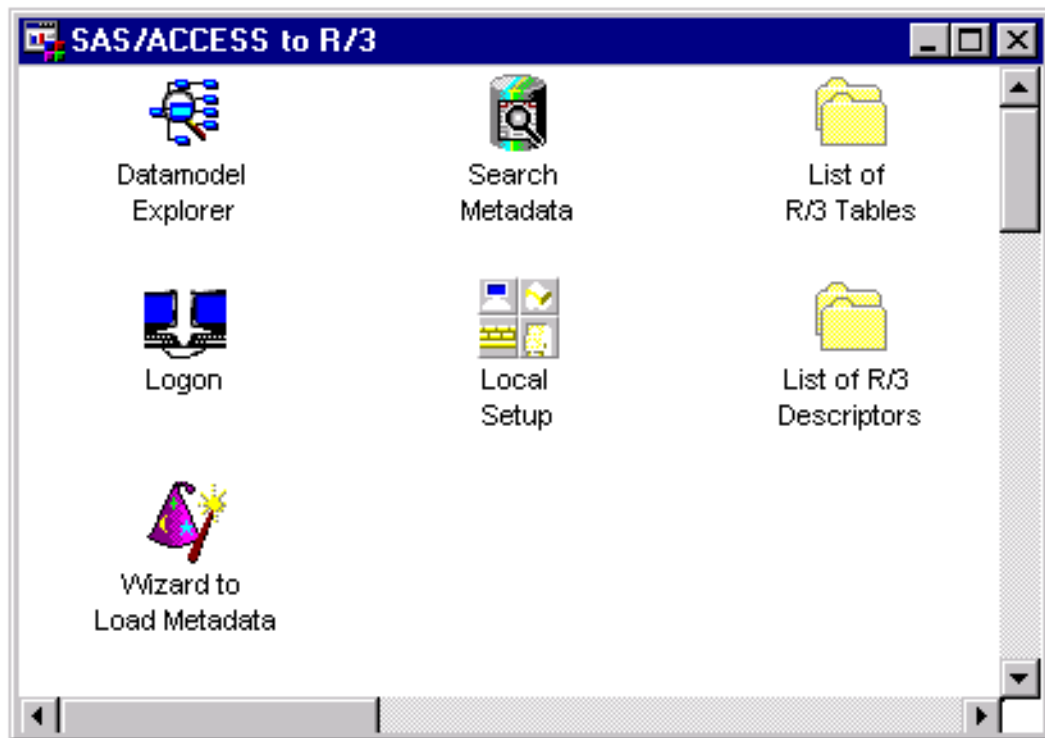
## Getting Started with the SAS/ACCESS Interface to R/3

This section provides a brief tutorial on how to use the SAS/ACCESS Interface to R/3. For more detailed information, consult the additional references that are listed in “Recommended Reading” on page 95 or contact your SAS Support Consultant.

To get started with the SAS/ACCESS Interface to R/3:

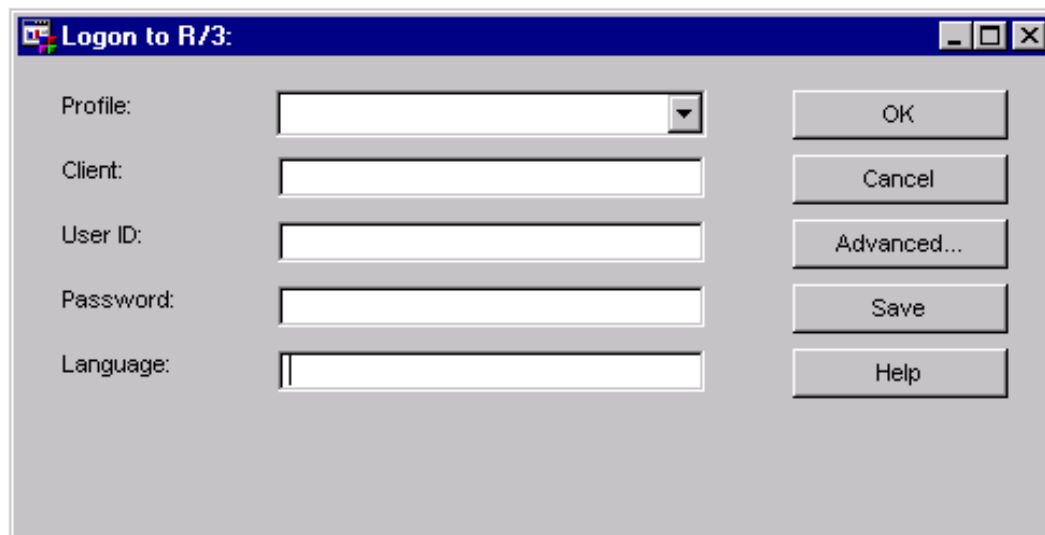
- 1 Open a SAS session.
- 2 Enter `%r3access` in the command line to start the SAS/ACCESS Interface to R/3.

Display 2.1 SAS/ACCESS to R/3 Window



3 Double-click the Logon icon to open the Logon to R/3 window.

Display 2.2 Logon to R/3 Window



Existing pre-defined profiles are available from the **Profile** field drop-down list.

To use a pre-defined profile:

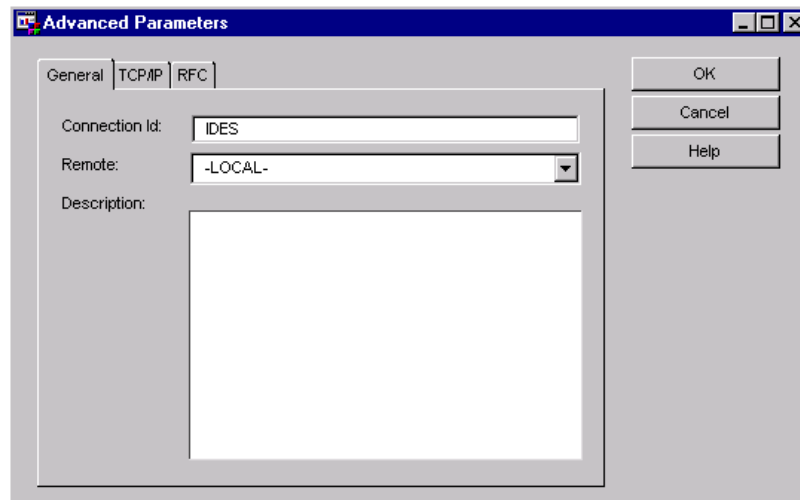
- a Select a profile from the **Profile** field drop-down list.
- b Click **OK** to connect to R/3.

If there are no pre-defined profiles, you will need to create one.

To create a new profile:

- a Open the Logon to R/3 window as described earlier.
- b If you want to save the connection information for later use, enter a name for the **Profile**.
- c Enter a three-digit identification number for the R/3 **Client**.
- d Enter a valid R/3 **User ID**.
- e Enter the corresponding R/3 **Password** for the user ID.
- f Click **Advanced** in the Logon to R/3 window to display the Advanced Parameters window that is shown in Display 2.3.

**Display 2.3** Advanced Parameters Window



- g From the TCP/IP tab, enter the RFC server name in the **Host** field. The default is **localhost**; a fully qualified domain name might not be required, depending on the DNS configuration for the network. Enter an appropriate port number in the **Port** field.
- h From the RFC tab, enter the host name in the **Host** field.
- i Click **OK** to close the Advanced Parameters window and return to the Logon to R/3 window.
- j If you want to use this log on information later, click **Save** to save the profile information.
- k Click **OK** to connect to R/3.

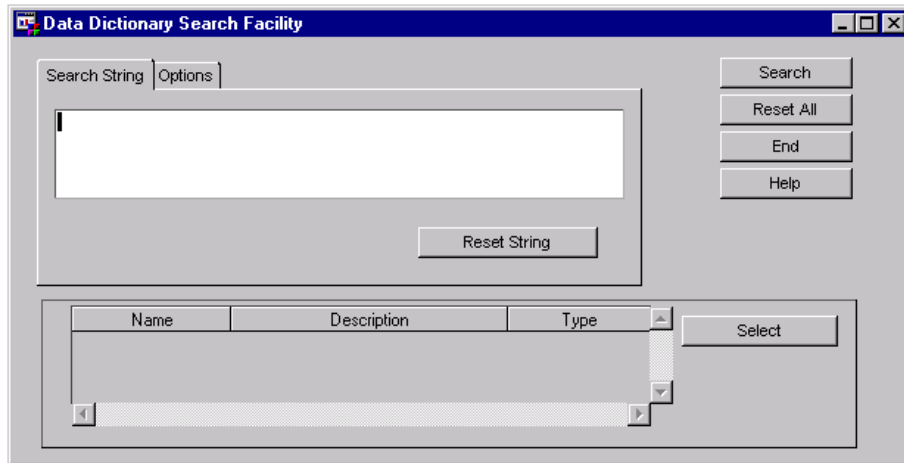
---

## Searching R/3 Metadata

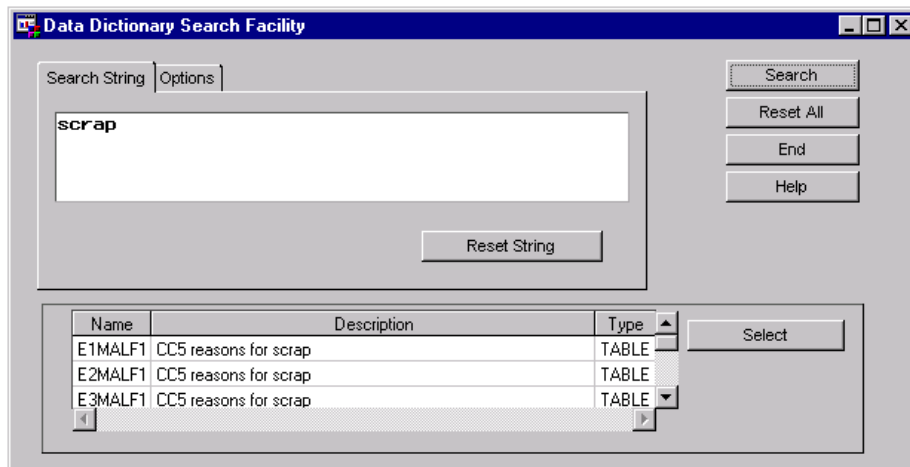
The SAS/ACCESS Interface to R/3 provides a robust search capability that you can use to search your metadata for specific information.

For example, to search for all tables that contain the word “scrap” in their metadata:

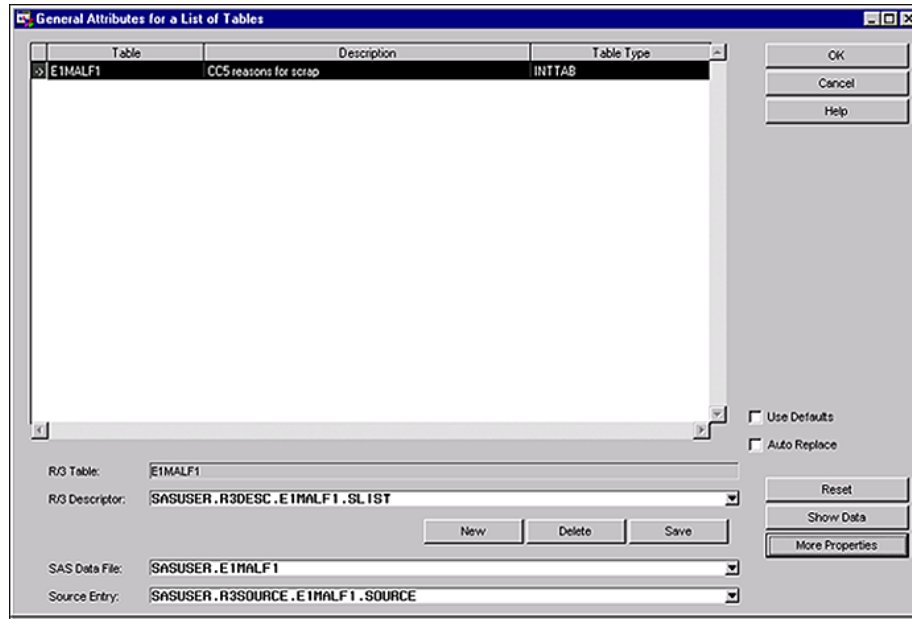
- 1 From SAS, start the SAS/ACCESS Interface to R/3 to display the SAS/ACCESS to R/3 window that is shown in Display 2.1.
- 2 Double-click the Search Metadata icon to display the Data Dictionary Search Facility window.

**Display 2.4** Data Dictionary Search Facility Window

- 3 Click inside the text entry field on the Search String tab, and then enter text to search for, such as the word “scrap”. Click **[Search]**. A list of tables will display in the table in the bottom of the Search String tab as shown in Display 2.5.

**Display 2.5** Data Dictionary Search Facility Window (Searching for 'scrap')

- 4 Double-click one of the tables in the list. The General Attributes for a List of Tables window displays to give you more detailed information about the selected table as shown in Display 2.6.

**Display 2.6** General Attributes for a List of Tables Window

- 5 Click **OK** to return to the Data Dictionary Search Facility window.

---

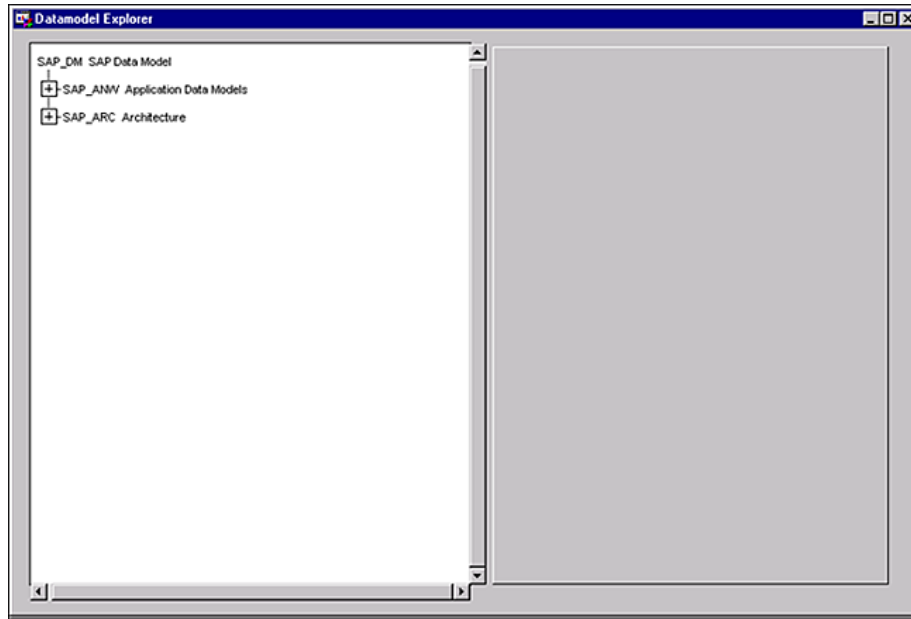
## Exporting R/3 Metadata to SAS/Warehouse Administrator

The SAS/ACCESS Interface to R/3 enables you to export metadata from R/3 tables to a warehouse environment in SAS/Warehouse Administrator.

To export R/3 metadata:

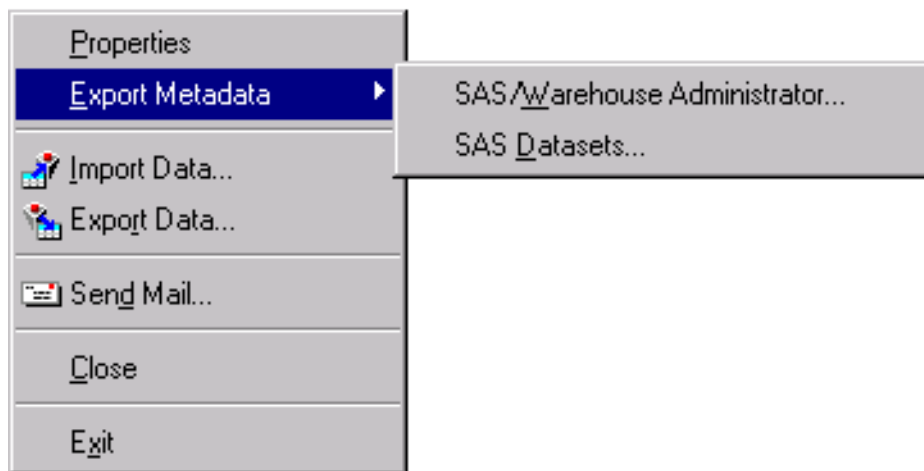
- 1 From SAS, open the SAS/ACCESS Interface to R/3 to display the SAS/ACCESS to R/3 window that is shown in Display 2.1.
- 2 Double-click the Datamodel Explorer icon to display the Datamodel Explorer window.

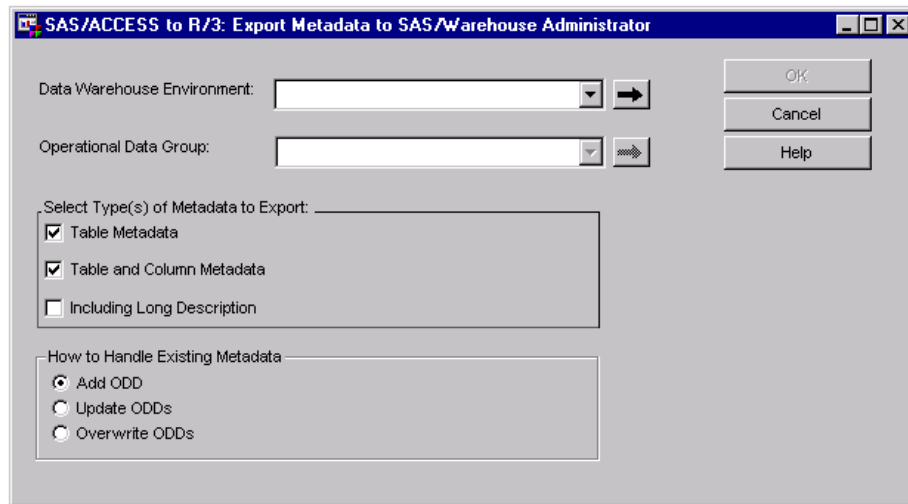
**Display 2.7** Datamodel Explorer Window



- 3 For this example, click the plus sign (+) for the application data models topic in the Datamodel Explorer. Then, click the plus sign (+) beside the Industry Solutions and Industry Solutions Public Sector subtopics. Single-click ISPS\_HR IS-PS Human Resources to select this subtopic.
- 4 From the main menu of the Datamodel Explorer window, select
  - File  $\blacktriangleright$  Export Metadata  $\blacktriangleright$  SAS/Warehouse Administrator
 as shown in Display 2.8 to display the SAS/ACCESS to R/3: Export Metadata to SAS/Warehouse Administrator window.

**Display 2.8** File Menu for the Datamodel Explorer Window

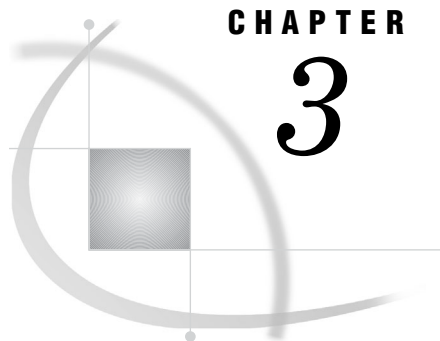


**Display 2.9** SAS/ACCESS to R/3: Export Metadata to SAS/Warehouse Administrator Window

- 5 From the **Data Warehouse Environment** drop-down list, select a pre-defined environment from the SAS/ACCESS to R/3 folder.
- 6 From the **Operational Data Group** drop-down list, select an operational data group from the selected data warehouse environment. The **Operational Data Group** field is disabled until you select a data warehouse environment.
- 7 Click **OK** to export the metadata to the selected data warehouse environment in SAS/Warehouse Administrator.







## CHAPTER

## 3

## Accessing and Using R/3 Data

---

<i>Introduction</i>	11
<i>Accessing Data Using Direct Access and ODBC</i>	11
<i>Accessing Data Using the SAS/ACCESS Interface to R/3</i>	11
<i>Remote Function Call (RFC) Method</i>	12
<i>Extract Management Method</i>	13
<i>Installation and Setup</i>	13
<i>Data Transfer and Use</i>	13

---

### Introduction

This chapter describes the methods you can use to access R/3 data: direct access and ODBC, which do not require the use of the interface, and the SAS/ACCESS Interface to R/3.

The chapter also includes an overview of the Remote Function Call (RFC) and extract management methods.

---

### Accessing Data Using Direct Access and ODBC

There are two methods of accessing data that do not require the SAS/ACCESS Interface to R/3: direct access and ODBC.

Direct Access

This is a form of transparent access that does not require additional programming or intermediate operations. This form of access is possible because the R/3 system is an Open Systems-compliant application.

Direct access uses an intermediate SAS/ACCESS product to the specific database, which can be ORACLE, INFORMIX, ADABAS, or DB/2.

ODBC (Open Data Base Connectivity)

This method allows direct data access in a PC environment by using the SAS/ACCESS Interface to the ODBC product.

---

### Accessing Data Using the SAS/ACCESS Interface to R/3

You can use the SAS/ACCESS Interface to R/3 to access R/3 data by using two different methods: Remote Function Call (RFC) or extract management.

- Remote Function Call

The Remote Function Call method is normally used. It offers online access to the R/3 data.

- Extract Management

The extract management method is the original method that has now largely been superseded. It offers off-line access to the R/3 data that can be useful when

- there is a poor or slow communication link between SAS and R/3
- a backup file is required
- there is a lot of data.

*Note:* Both methods generate a SAS DATA step.  $\Delta$

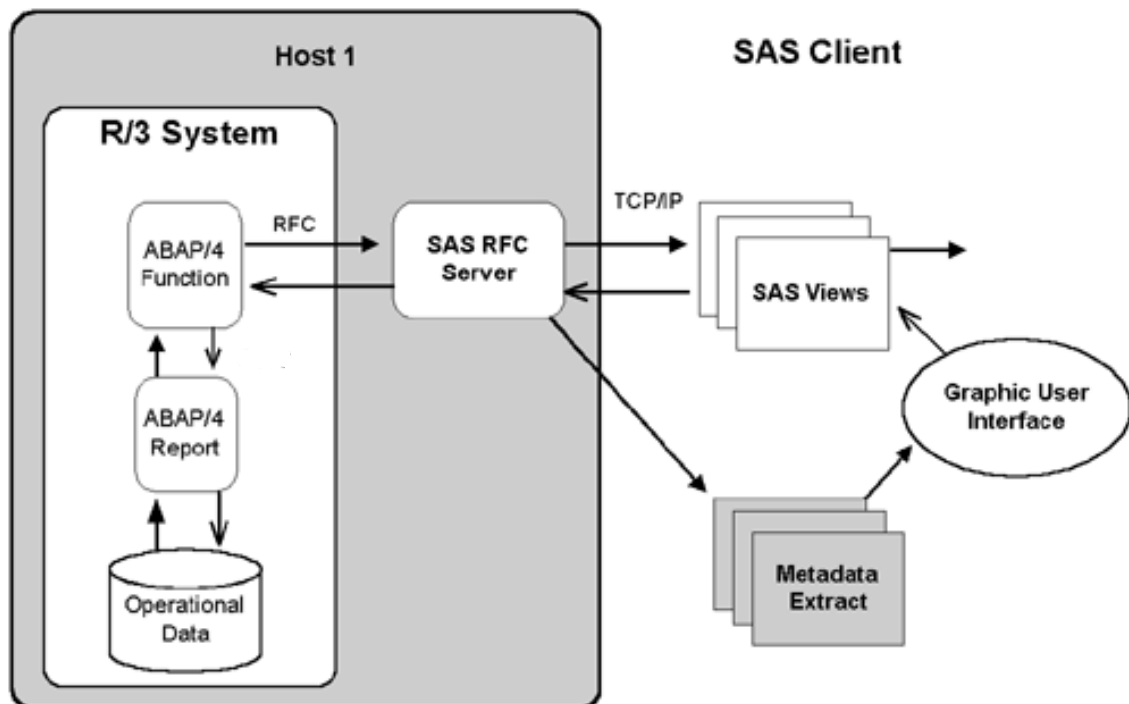
---

## Remote Function Call (RFC) Method

The Remote Function Call (RFC) is a SAP AG implementation of the Remote Procedure Call. RFC allows access to R/3 from external applications, such as SAS or other R/3 systems.

An overview of the Remote Function Call method for accessing data from R/3 is shown in Figure 3.1. Two modules (ABAP Function and ABAP Report, which are provided with the interface) attach to the R/3 system. Communication between the ABAP Function module and the interface itself uses RFC. On the other side, the interface uses TCP/IP to communicate with the RFC Server. For more details about the RFC Server, see Chapter 5, “Using the RFC Server,” on page 57.

**Figure 3.1** Remote Function Call (RFC) Method of Accessing Data from the R/3 system



In general, the RFC method consists of generating a SAS DATA step to access the R/3 data, and then it uses the DATA step to create either

- a data set that is a SAS copy of the R/3 data
- a View that reads the R/3 data each time it is required.

---

## Extract Management Method

The extract management method creates an ABAP query that copies the data from R/3 to an external file. It also creates a SAS DATA step that then reads the external file into SAS. After the R/3 data has been exported to SAS, the data can be held either temporarily for discrete analysis or permanently in a SAS data warehouse. The interface generates all of the necessary programs for both ABAP and SAS (based on the R/3 data dictionary tables).

The extract management method to access R/3 data is discussed in the following sections: Installation and Setup; Data Transfer and Use.

### Installation and Setup

- 1 Generate an ABAP report.

Use the descriptor file to create an ABAP report and write it to a text file. The ABAP report is used later to copy the R/3 data to an external intermediate data file.

- 2 Generate a DATA step.

Generate a SAS DATA step to read the intermediate data file.

- 3 Install the ABAP report in R/3.

This step is independent of the SAS/ACCESS Interface to R/3 and SAS and can be performed simultaneously with Step 2.

- 4 Install the ABAP text file from Step 1 into R/3.

### Data Transfer and Use

*Note:* After installation and setup, you can perform the following steps as many times as required.  $\Delta$

- 1 Run the ABAP report in R/3.

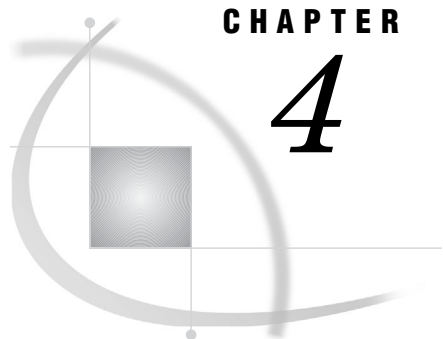
Run the installed ABAP report on R/3. This creates the external intermediate data file.

- 2 Use the DATA step.

Use the DATA step to read in or copy the external intermediate data file into SAS.

*Note:* Depending on your situation, it might be possible to simplify or streamline the outlined process. For example, in UNIX a named pipe or other external file can enable ABAP to write data to the external intermediate data file so that SAS can read it simultaneously.  $\Delta$





## CHAPTER

## 4

# Using the SAS/ACCESS Interface to R/3

<i>Introduction</i>	16
<i>Using the Logon Utility</i>	16
<i>Logon to R/3 Window</i>	16
<i>Logon to R/3 File Menu</i>	18
<i>Logon to R/3 Connections Menu</i>	19
<i>Advanced Parameters Window</i>	19
<i>General Tab</i>	20
<i>TCP/IP Tab</i>	20
<i>RFC Tab</i>	21
<i>Sideinfo File</i>	22
<i>Using the Local Setup Utility</i>	22
<i>Application Setup Window</i>	22
<i>Defaults Tab</i>	23
<i>Data Dictionary Tab</i>	24
<i>Miscellaneous Tab</i>	24
<i>Using the Datamodel Explorer</i>	25
<i>Datamodel Explorer Window</i>	25
<i>Sub Data Models Tab</i>	26
<i>All Entity Types Tab</i>	27
<i>Assigned Tables Tab</i>	28
<i>Attributes Tab</i>	28
<i>Datamodel Explorer Window Menus</i>	29
<i>File Menu</i>	30
<i>View Menu</i>	31
<i>Tools Menu</i>	32
<i>Connections Menu</i>	32
<i>List of Connections Window</i>	33
<i>General Tab</i>	34
<i>RFC Tab</i>	34
<i>TCP/IP Tab</i>	35
<i>More RFC Tab</i>	35
<i>General Attributes for a List of Tables Window</i>	35
<i>Enter Dataset Name Window</i>	39
<i>Enter Catalog Entry Name Window</i>	39
<i>Create Extract Programs Window</i>	40
<i>Attributes for a Table (Edit) Window</i>	42
<i>General Attributes Tab</i>	43
<i>Fields Tab</i>	44
<i>Where Tab</i>	44
<i>Related Tables Tab</i>	44
<i>Select Fields for a Table Window</i>	45

<i>ABAP Where Expression Builder Window</i>	46
<i>Using the List of R/3 Tables</i>	47
<i>List of R/3 Tables Window</i>	47
<i>Using the List of Descriptors</i>	48
<i>List of R/3 Descriptors Window</i>	48
<i>Export Metadata Window</i>	48
<i>Export Metadata to SAS/Warehouse Administrator Window</i>	49
<i>Using the Search Metadata Utility</i>	51
<i>Data Dictionary Search Facility Window</i>	51
<i>Search String Tab</i>	52
<i>Options Tab</i>	52
<i>Performing Batch Operations</i>	53
<i>Source Parameter</i>	54
<i>Passwords</i>	54

---

## Introduction

The SAS/ACCESS Interface to R/3 is an interactive application that supports data extraction from the R/3 data tables and stores this data in SAS data sets. It simplifies the process of issuing ABAP queries and executing the SAS DATA step for reading the R/3 tables.

This chapter outlines the pull-down menus and various windows in the SAS/ACCESS Interface to R/3. Several tasks are included with the window that is most closely associated with that task.

---

## Using the Logon Utility

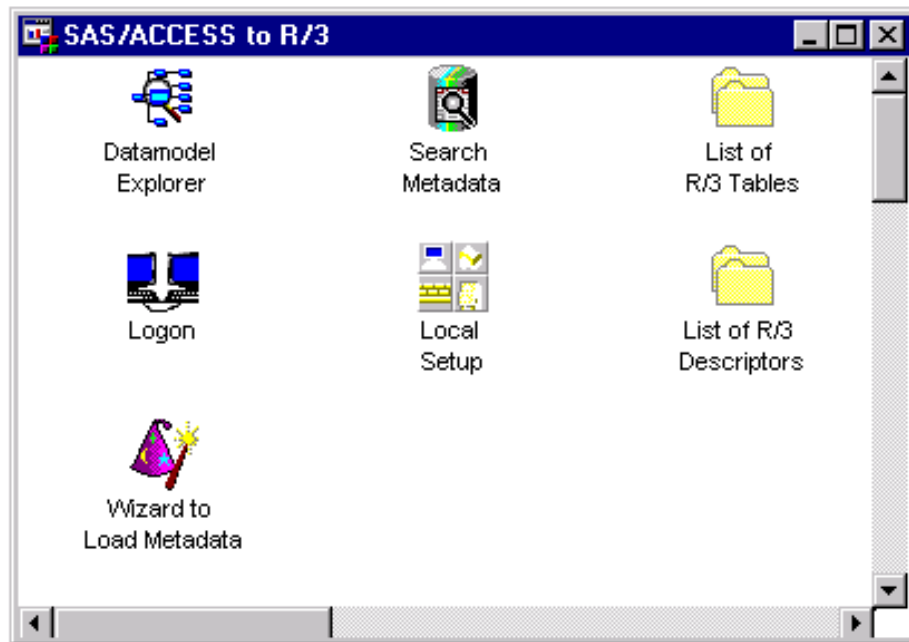
The logon utility is used to connect to the R/3 system. You can save connection settings in *profiles* and then reuse them at a later time.

---

### Logon to R/3 Window

To open the Logon window:

- 1 Go to the SAS desktop, and open the SAS/ACCESS to R/3 desktop.

**Display 4.1** SAS/ACCESS to R/3 Desktop

2 Double-click the Logon icon to open the Logon to R/3 window.

**Display 4.2** Logon to R/3 Window

The Logon to R/3 window has multiple elements that you must specify in order to log on successfully.

The following fields are contained in the Logon to R/3 window:

- |                |  |
|----------------|--|
| <b>Profile</b> | displays the text label that you assign to the profile that is defined in this window and the Advanced Parameters window.  |
| <b>Client</b>  | displays the R/3 client identification number. The client ID must be three numeric characters with zeros as filler. For example, <b>10</b> will fail but <b>010</b> will work. |
| <b>User ID</b> | displays the R/3 user ID.  |

<b>Password</b>	displays the R/3 system password.
<b>Language</b>	determines the human language in which to display the R/3 data. For example, entering the letter <b>E</b> in this field sets the language as English, entering <b>D</b> sets the language as German, and so forth. The text and help screens will display in the chosen language as long as the language support is installed.

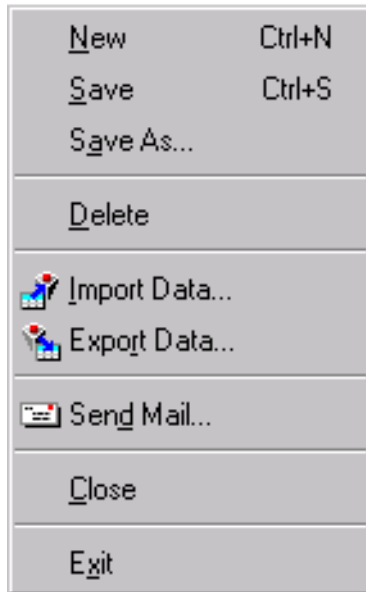
The Logon to R/3 window contains the following buttons:

<b>OK</b>	logs on to the R/3 system by using the user-supplied information in the fields.
<b>Cancel</b>	closes the Logon to R/3 window without attempting to log on to R/3.
<b>Save</b>	saves the user-specified information from the fields of the Logon to R/3 window in the profile.
<b>Advanced</b>	displays the Advanced Parameters window, which is described in “Advanced Parameters Window” on page 19.
<b>Help</b>	displays the SAS Help for the Logon to R/3 window.

## Logon to R/3 File Menu

Opening the Logon to R/3 window changes the File menu on the main SAS window and adds a Connections menu. The File menu commands are described as follows:

**Display 4.3** File Menu of the Logon to R/3 Window



<b>New</b>	clears the fields in the Logon to R/3 window.
<b>Save</b>	saves the user-specified information from the fields of the Logon to R/3 window in the profile.
<b>Save As</b>	displays the Save As window. This window allows you to enter a libref name in which to save the profile.

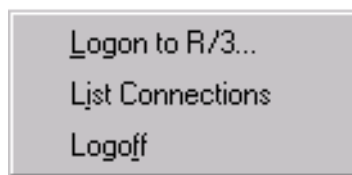


**Display 4.4** Save As Window

<b>Delete</b>	deletes the profile that is shown in the Logon to R/3 window.
<b>Import Data</b>	displays the SAS Import Wizard.
<b>Export Data</b>	displays the SAS Export Wizard.
<b>Send Mail</b>	Opens the standard SAS mail window to let you distribute electronic mail from SAS.
<b>Close</b>	closes the Logon to R/3 window and returns you to the SAS/ACCESS to R/3 desktop.
<b>Exit</b>	ends the SAS session and closes all open SAS applications.

## Logon to R/3 Connections Menu

Opening the Logon to R/3 window also adds the Connections menu.

**Display 4.5** Connections Menu of the Logon to R/3 Window

The Connections menu contains the following selections:

<b>Logon to R/3</b>	logs on to R/3 by using the user-supplied information in the fields.
<b>List Connections</b>	displays the List of Connections window that is shown in Display 4.21 on page 33.
<b>Logoff</b>	disconnects the current logon from R/3.

---

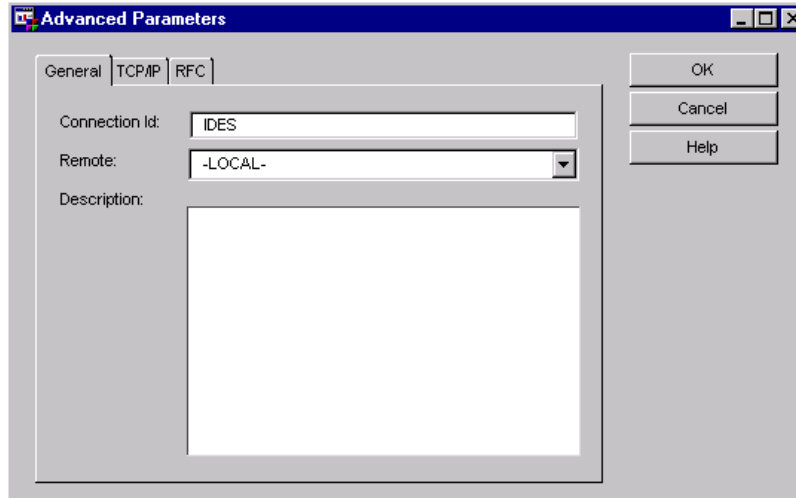
## Advanced Parameters Window

The Advanced Parameters window contains three tabs that are used for defining additional R/3 connection information. While all required fields have default values, not

all of the fields display their default values. This section presents the three tabs and an explanation of their parameters.

Click **Advanced** in the Logon to R/3 window to display the Advanced Parameters window. The Advanced Parameters window contains three tabs: General, TCP/IP, and RFC.

**Display 4.6** Advanced Parameters Window



The Advanced Parameters window contains the following buttons:

- OK** closes the Advanced Parameters window and returns you to the Logon to R/3 window, saving your entered information.
- Cancel** closes the Advanced Parameters window and returns you to the Logon to R/3 window without saving any change that you might have made to the fields in the window.
- Help** displays the SAS Help for the Advanced Parameters window.

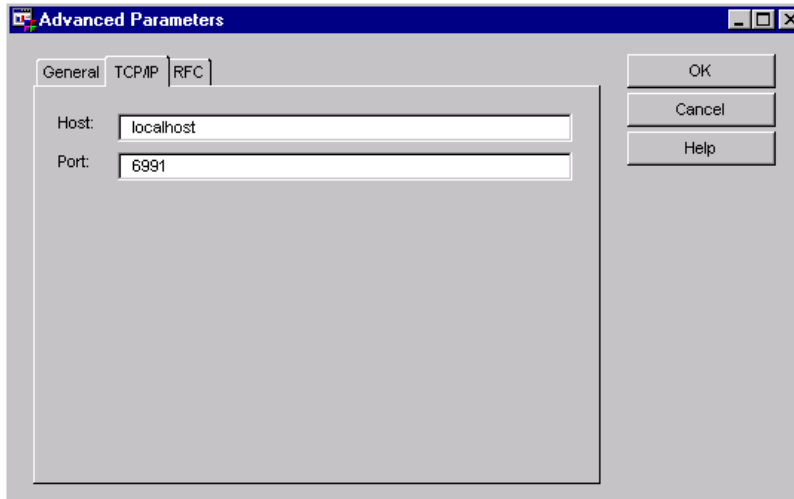
## General Tab

When the Advanced Parameters window displays, the General tab is selected by default. The General tab contains general connection information. The following fields are contained in the General tab of the Advanced Parameters window:

- Connection Id** displays a text name that you assign for the connection ID. The connection ID is used for filerefs and macros in the SAS program to manage the connection to R/3 and to access the R/3 tables. The name must follow standard SAS syntax.
- Remote** displays the remote SAS session. In order to read R/3 tables into SAS DATA sets on a remote SAS session, the connection to R/3 has to be established in the remote SAS session.
- Description** displays a text description of the connection profile.

## TCP/IP Tab

The TCP/IP tab contains network address information. To display the TCP/IP tab, select the TCP/IP tab in the Advanced Parameters window.

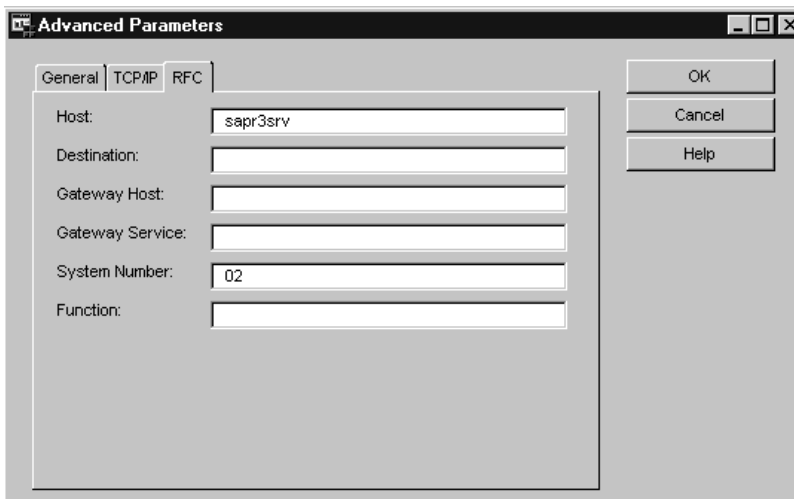
**Display 4.7** TCP/IP Tab of the Advanced Parameters Window

The following fields are contained in the TCP/IP tab in the Advanced Parameters window:

- Host** specifies the network location of the RFC server. The default is **localhost**, and a fully qualified domain name is not required. For example, if the RFC server can be reached by using the DNS name **rfc.example.com** and is on the local area network, the **Host** field will accept either **rfc** or **rfc.example.com**. Numeric addresses are also accepted.
- Port** specifies the TCP/IP port to use for communicating with the RFC server. The default port number is **6991**.

## RFC Tab

The RFC tab contains information that the RFC server uses to connect to the SAP R/3 application server. To display the RFC tab, select the RFC tab in the Advanced Parameters window.

**Display 4.8** RFC Tab of the Advanced Parameters Window

The following fields are contained in the RFC tab in the Advanced Parameters window:

<b>Host</b>	is used to define the R/3 server to which the RFC server connects. This field does not have a pre-defined default value.
<b>Destination</b>	is a logical name that is used by the sideinfo file. Note: If a destination is set here, the other fields on the RFC tab will be ignored, as the sideinfo file will override them. If you are using sideinfo files to communicate with R/3, enter the correct symbolic destination. The sideinfo file is discussed in “Sideinfo File” on page 22.
<b>Gateway Host</b>	is the gateway host that is used by the RFC server to communicate with the R/3 system. This field defaults to <b>Host</b> .
<b>Gateway Service</b>	is the communication gateway service that is used by R/3.
<b>System Number</b>	is the system number that identifies which R/3 system to access if there is more than one R/3 system that resides on the same host. At times, more than one R/3 system will be operating on the same host. For example, a development or testing R/3 system may be operating on the same host hardware as a production R/3 system. In this case, multiple R/3 systems can be accessed separately by using system numbers. The default value for this field is <b>0</b> (zero).
<b>Function</b>	is a SAS function to call as part of the R/3 logon process. You can specify the R/3 function module that is used for RFC.

## Sideinfo File

The sideinfo file is a text file that you can use to set logon parameters for R/3 users, including the RFC host, system number, gateway service, and gateway host. The placing of the sideinfo file is host- and release-dependent. In general, the sideinfo file defaults to the current directory but can be overridden by an environment variable. You should examine the R/3 system documentation for the specific platform and release level for details.

If you are using a sideinfo file, you only need to set the **Destination** field on the RFC tab in the Advanced Parameters window of the Logon to R/3 utility, and enter the information for the other parameters in the sideinfo file.

---

## Using the Local Setup Utility

The local setup utility enables you to display the Application Setup window, which you can use to define various application parameters. You can use the local setup utility to specify the default location from which data is extracted and the default location to which data is stored. The utility also defines several other parameters that determine how the SAP data is extracted and where the extracted metadata is stored in SAS.

---

## Application Setup Window

The Application Setup window is used to set parameters for logging on and accessing data using the SAS/ACCESS Interface to R/3.

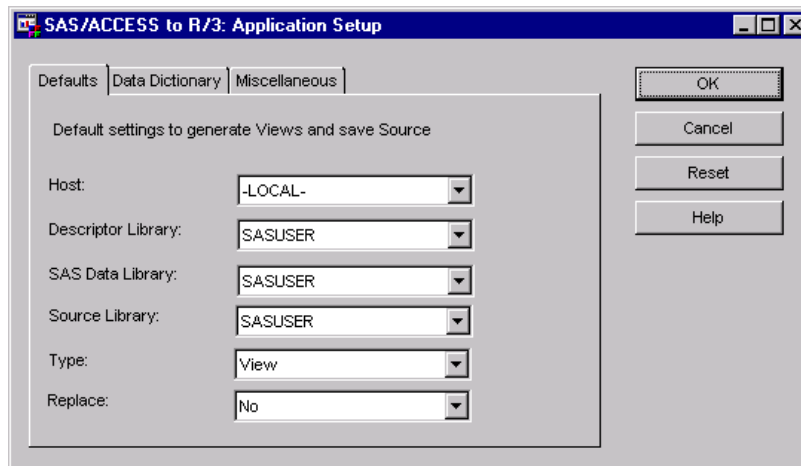
To display the Application Setup window:

- 1 From the SAS desktop, open the SAS/ACCESS to R/3 desktop that is shown in Display 4.1 on page 17.
- 2 Double-click the Local Setup icon to open the Application Setup window.

You can also display the Application Setup window from the Datamodel Explorer. From the pull-down menu, select



**Display 4.9** Application Setup Window



The buttons available on the Application Setup window are

<b>OK</b>	closes the window, saving any entered parameters.
<b>Cancel</b>	closes the window without saving any entered parameters.
<b>Reset</b>	resets the parameters on the window to their defaults.
<b>Help</b>	displays the SAS Help for the Application Setup window.

## Defaults Tab

The Defaults tab presents default settings to generate the views and save the source. The elements available from the Defaults tab are

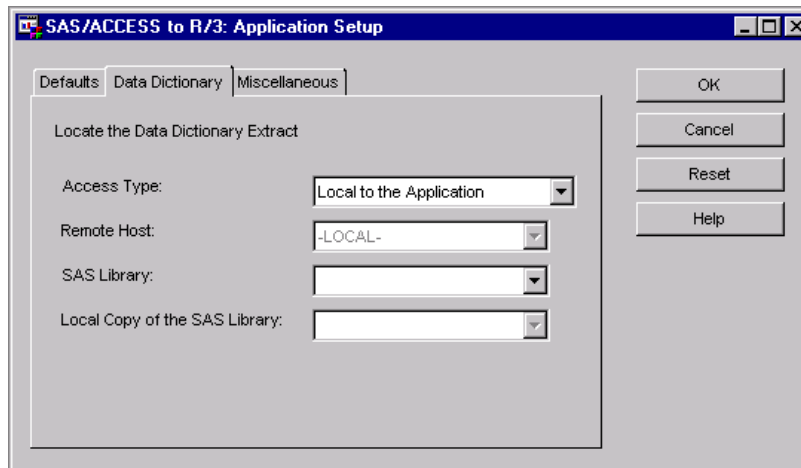
<b>Host</b>	specifies the target machine on which the extracted data will be saved. Select either <b>-LOCAL-</b> or a remote host (if defined). A remote host is the session ID of a running SAS/CONNECT session. <b>-LOCAL-</b> is the default selection.
<b>Descriptor Library</b>	specifies the location on the selected host in which the descriptors are saved. Select the desired library. <b>SASUSER</b> is the default selection.
<b>SAS Data Library</b>	specifies the location on the selected host in which the SAS view or data file is saved. Select the desired library. <b>SASUSER</b> is the default selection.
<b>Source Library</b>	specifies the location on the selected host in which the source is saved. Select the desired library. <b>SASUSER</b> is the default selection.
<b>Type</b>	specifies whether the extracted SAP BW metadata is stored in a SAS view or a SAS data file. Select either <b>View</b> or <b>Data</b> . <b>View</b> is the default selection.

**Replace** determines whether to overwrite the existing view or data file when performing a new extraction. Select **Yes** to overwrite existing views or data sets. Select **No** to leave existing views or data sets untouched. **No** is the default selection.

## Data Dictionary Tab

The Data Dictionary tab enables you to enter values that specify where the extract of the R/3 Data Dictionary is located and how to access it.

**Display 4.10** Data Dictionary Tab of the Application Setup Window

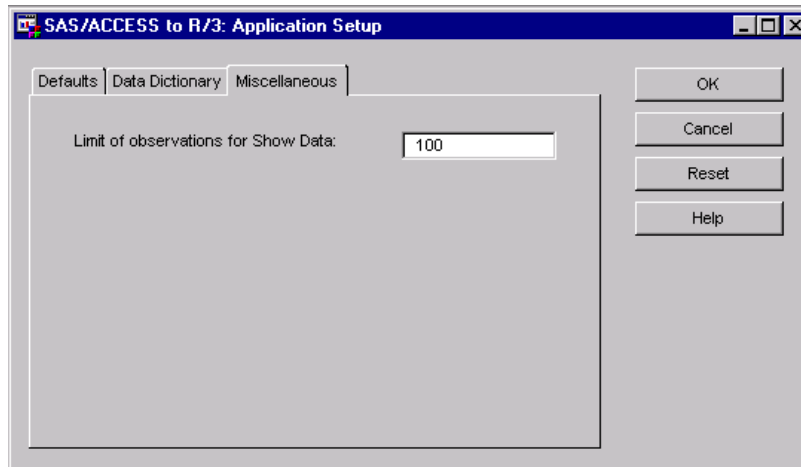


The elements available from the Data Dictionary tab are

- Access Type** specifies the location of the data dictionary that contains the SAP source data that you want to extract. Select either **Local to the Application** (default) or **Remote to the Application**. If the selected access is **Local to the Application**, then the **Remote Host** and **Local Copy of the SAS Library** fields are disabled.
- Remote Host** specifies the remote machine that contains the source data that you want to extract if the data dictionary is remote to the application. The remote host is the session ID of a running SAS/CONNECT session. If the data dictionary is local to the application, this field is disabled.
- SAS Library** enables you to select the SAS library that identifies the location of the data dictionary. If you are using a local host, this is the same library to which you extract metadata. If you are using a remote host, then you will specify a SAS library that references the location of the metadata on the remote host. **R3LIB** is the default selection.
- Local Copy of the SAS Library** enables you to select the SAS library that identifies the local copy of the data dictionary. If the data dictionary extract resides on a remote host, the (accessed) information can be stored in a local copy for better performance. If the data dictionary is local to the application, this field is disabled.

## Miscellaneous Tab

The Miscellaneous tab enables you to define a limit for the number of observations to display when showing SAP data in the Datamodel Explorer.

**Display 4.11** Miscellaneous Tab of the Application Setup Window

The element available on the Miscellaneous tab is

**Limit of observations for Show Data** enables you to define the maximum number of observations to display for a data query. The default value is **100**.

---

## Using the Datamodel Explorer

The Datamodel Explorer window allows a graphic exploration of the data models of the R/3 database, similar to a tree diagram of a directory's files and subdirectories. The Datamodel Explorer aids you in navigating through the R/3 data model and its many subordinate data models.

The Datamodel Explorer window shows a tree diagram of data models in the R/3 database. The R/3 data model is at the top of the tree, and the subordinate data models branch from it. End nodes on the tree diagram are entities. Each entity type can contain one or more tables. By using the Datamodel Explorer, you can find which table is accessed by the SAS/ACCESS Interface to R/3. After a table is identified, you can

- modify the field selection
- set a ABAP WHERE clause on that table
- create SAS views for that table
- display table information directly in the Datamodel Explorer
- display additional meta-information about the identified table.

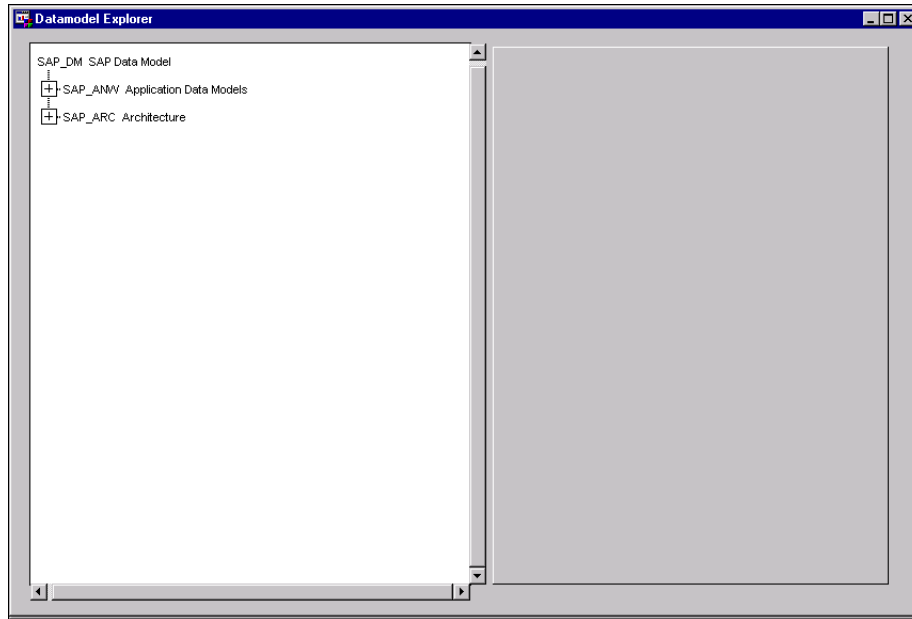
This following section describes the windows of the Datamodel Explorer and their uses.

---

### Datamodel Explorer Window

To start the Datamodel Explorer, go to the SAS desktop and open the SAS/ACCESS to R/3 desktop that is shown in Display 4.1 on page 17.

Double-click the Datamodel Explorer icon to open the Datamodel Explorer window.

**Display 4.12** Datamodel Explorer Window

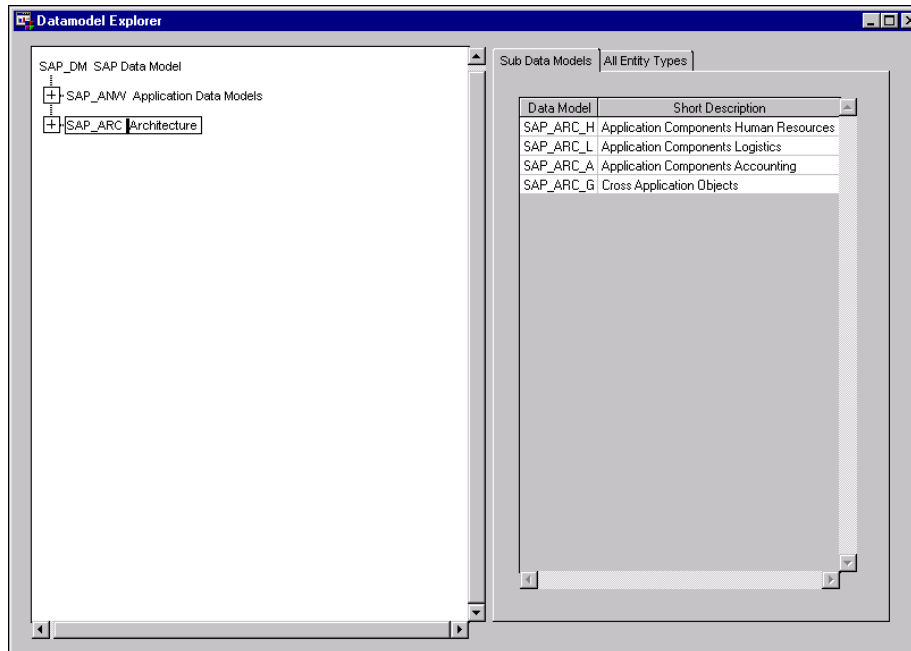
The Datamodel Explorer window opens with the collapsed tree diagram in the left half of the window. When you select a data model from the tree diagram, the Sub Data Models tab displays in the right half of the window as shown in Display 4.13 on page 27.

To expand the tree diagram, click the plus sign [+] or double-click the corresponding data model name. The data models can also be opened and closed by clicking with the right mouse button on a data model and selecting **Expand** or **Collapse** from the pop-up menu.

### Sub Data Models Tab

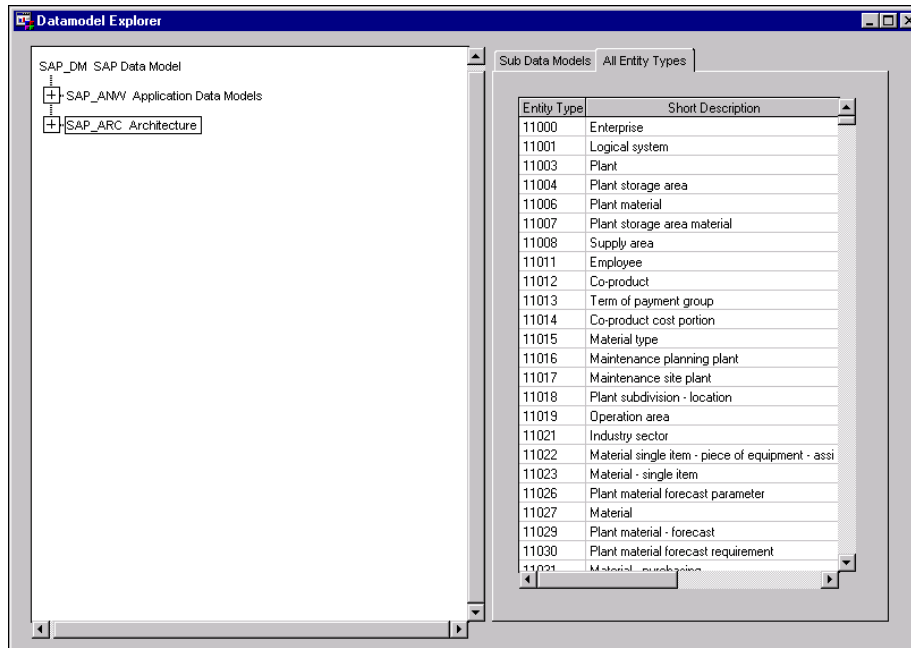
The Sub Data Models tab in the right half of the Datamodel Explorer window shows the name and a short description for all sub data models in the data model that was selected in the tree diagram. Selecting a data model in the left half of the Datamodel Explorer window displays the Sub Data Models tab in the right half of the window.



**Display 4.13** Sub Data Models Tab of the Datamodel Explorer Window

## All Entity Types Tab

The All Entity Types tab in the right half of the Datamodel Explorer window displays a table that describes the entity types within the data model that was selected in the tree diagram. For each entity type, the table displays its name and a short text description as follows:

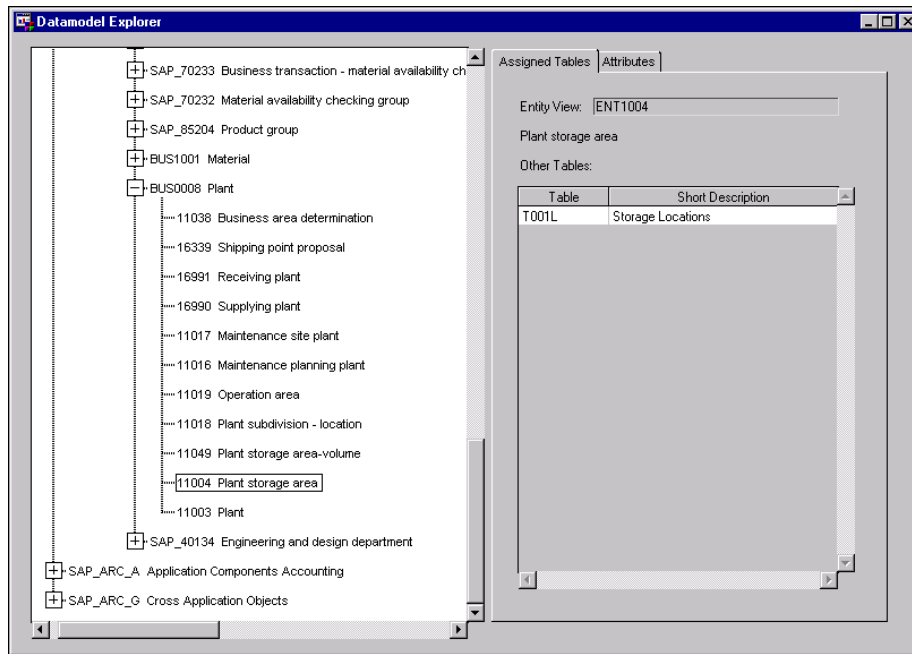
**Display 4.14** All Entity Types Tab of the Datamodel Explorer Window

## Assigned Tables Tab

To display the Assigned Tables tab, from the All Entity Types tab, double-click any line item.

By selecting an entity type and double-clicking it, the Datamodel Explorer searches for the entity type, expands the tree diagram, and scrolls until the selected entity type is visible and then highlights that entity type. The right half of the Datamodel Explorer window changes to show information about that entity type with two tabs: Assigned Tables and Attributes. The default tab is Assigned Tables as shown below.

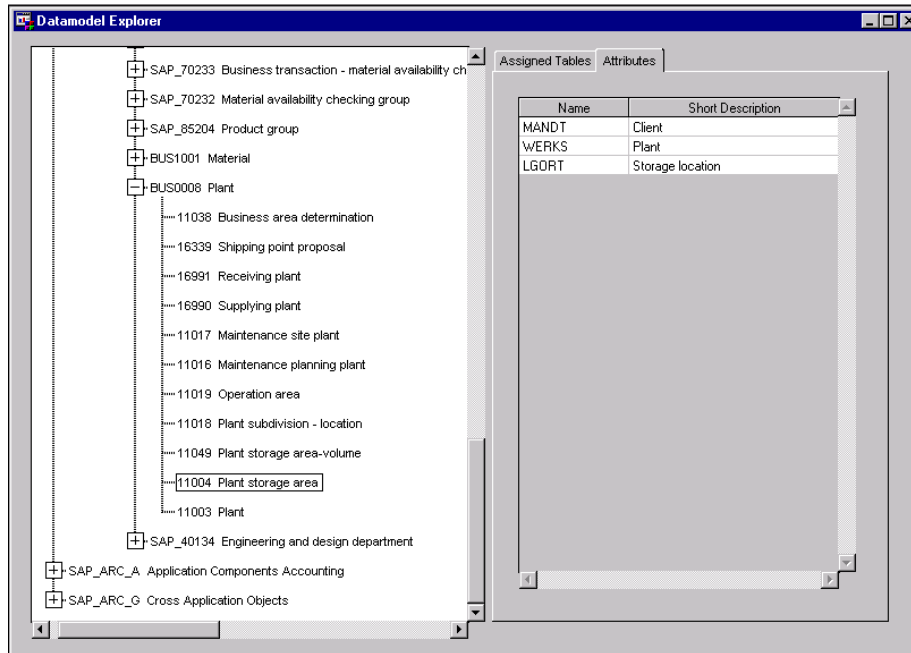
**Display 4.15** Assigned Tables Tab of the Datamodel Explorer Window



The Assigned Tables tab displays the Entity View name and a table that lists the table(s) that the entity type contains.

## Attributes Tab

To display the Attributes tab, from the All Entity Types tab, double-click any line item and then click the Attributes tab. The Attributes tab will display.

**Display 4.16** Attributes Tab of the Datamodel Explorer Window

An attribute is a field of an entity view. The Attributes tab displays a table that contains the name and a short description of the fields in the selected table.

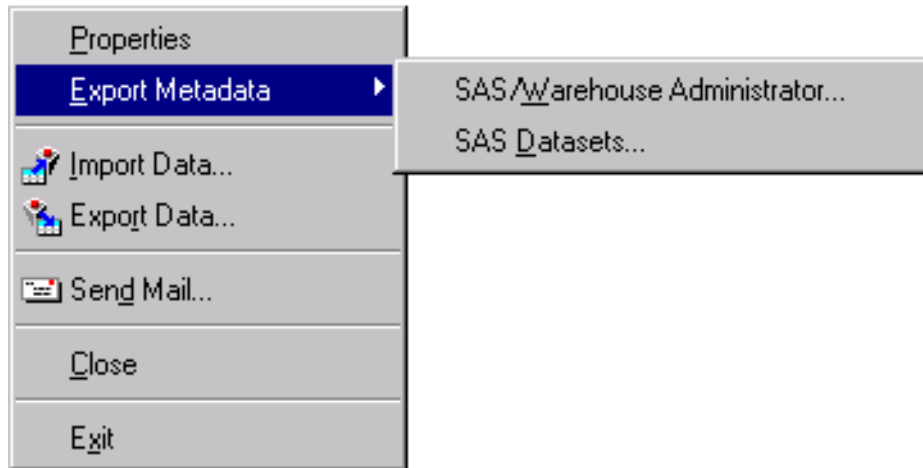
---

## Datamodel Explorer Window Menus

The Datamodel Explorer window contains several menus. While four of the menus (Edit, Solutions, Window, and Help) are all part of the standard SAS environment and are fully documented in your SAS reference manuals, four of the menus (File, View, Tools, and Connections) have commands that are specific to the SAS/ACCESS Interface to R/3. This section describes the menu commands that are available from the Datamodel Explorer window.

## File Menu

Display 4.17 File Menu of the Datamodel Explorer Window



The R/3 File menu commands are

**Properties** displays the General Attributes for a List of Tables window that is shown in Display 4.22 on page 36.

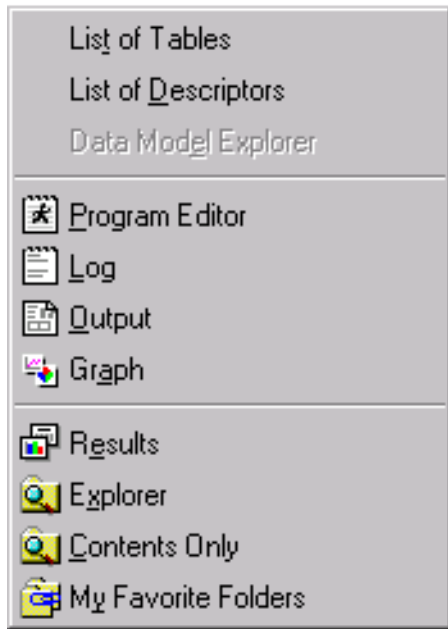
**Export Metadata** refines the choice to export to either **SAS/Warehouse Administrator** or to **SAS Datasets**.

Select **SAS/Warehouse Administrator** to display the Export Metadata to SAS/Warehouse Administrator window that is shown in Display 4.34 on page 50.

Select **SAS Datasets** to display the Export Metadata window that is shown in Display 4.33 on page 49.

## View Menu

**Display 4.18** View Menu of the Datamodel Explorer Window

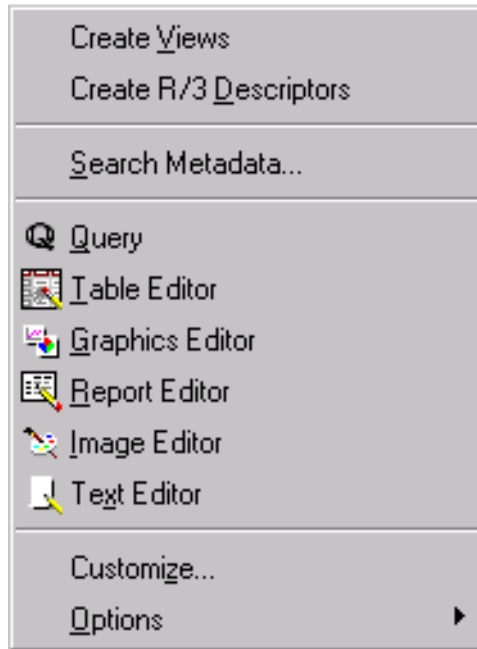


The R/3 View menu commands are

- |                            |   |
|----------------------------|---|
| <b>List of Tables</b>      | displays the List of R/3 Tables window that is shown in Display 4.31 on page 47.      |
| <b>List of Descriptors</b> | displays the List of R/3 Descriptors window that is shown in Display 4.32 on page 48. |

## Tools Menu

Display 4.19 Tools Menu of the Datamodel Explorer Window

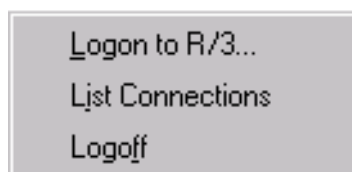


The R/3 Tools menu commands are

- |                               |  |
|-------------------------------|--|
| <b>Create Views</b>           | creates SAS data views to the R/3 tables. If the views already exist, a dialog box will prompt you to decide if you want to cancel, overwrite all the currently existing views, or decide on an individual view basis. A data set type of ACCR3 is added to all data sets and views that are created by the SAS/ACCESS Interface to R/3. |
| <b>Create R/3 Descriptors</b> | creates the R/3 descriptors. You should only use the SAS/ACCESS Interface to R/3 to delete descriptors that were created using the interface. Internal tables track the descriptors, and using external tools to delete descriptors can make the tables inconsistent.  |
| <b>Search Metadata</b>        | displays the Data Dictionary Search Facility window that is shown in Display 4.36 on page 52.  |

## Connections Menu

Display 4.20 Connections Menu of the Datamodel Explorer Window



The R/3 Connections menu commands are

- |                         |  |
|-------------------------|--|
| <b>Logon to R/3</b>     | displays the Logon to R/3 window that is shown in Display 4.2 on page 17.                            |
| <b>List Connections</b> | displays the SAS/ACCESS to R/3: List of Connections window that is shown in Display 4.21 on page 33. |
| <b>Logoff</b>           | disconnects the current logon profile from the R/3 system.   |

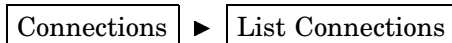
---

## List of Connections Window

The List of Connections window displays the current and available user profiles for connecting to the R/3 systems. You can also use the List of Connections window to log on to the systems.

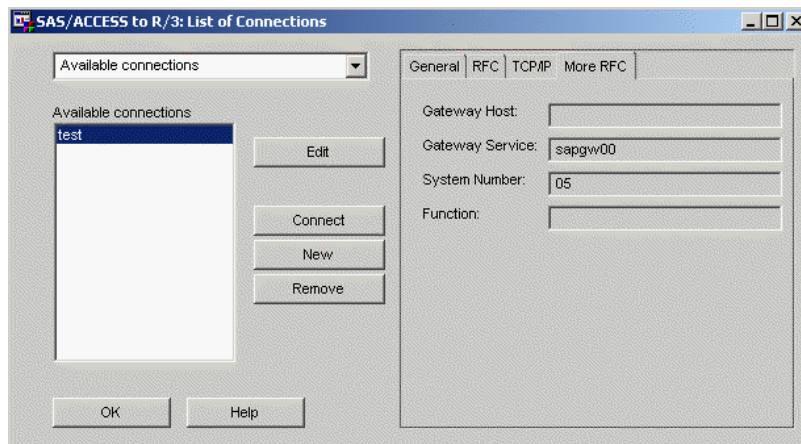
To display the List of Connections window:

- 1 From the SAS/ACCESS to R/3 desktop, start the Datamodel Explorer.
- 2 From the Datamodel Explorer menu, select



The List of Connections window displays.

**Display 4.21** List of Connections Window



The drop-down list on the upper left side of the window displays the type of connection that is shown in the connection list box. Click the down arrow icon to view the types of connection: **Available connections** or **Open connections**. The connection list box on the lower left side of the window then displays a list of connections for that connection type.

When you select **Available connections**, the following buttons are available:

- |                |  |
|----------------|--|
| <b>Edit</b>    | displays the Logon to R/3 window, which allows you to edit the profiles.   |
| <b>Connect</b> | connects to an R/3 database by using the connection parameters that are selected in the connection list box. If no connection is selected in the connection list box, this button is disabled. |
| <b>New</b>     | displays the Logon to R/3 window that is shown in Display 4.2 on page 17.  |

**Remove** deletes the connection that is selected in the connection list box. If no connection is selected in the connection list box, this button is disabled.

**OK** saves your changes, closes the List of Connections window, and returns you to the Datamodel Explorer window.

**Help** displays the SAS Help for the List of Connections window.

When you select **Open Connections**, the following buttons are available:

**Disconnect** disconnects the open connection that is selected in the connection list box. If no connection is open, this button is disabled.

**OK** saves your changes, closes the List of Connections window, and returns you to the Datamodel Explorer window.

**Help** displays the SAS Help for the List of Connections window.

When you select a connection in the connection list box, four tabs are displayed in the right half of the window. The information that is contained in these tabs is similar to the information that is displayed in the Advanced Parameters window.

The four tabs are

- General
- RFC
- TCP/IP
- More RFC.

The information that is contained in these tabs is available for viewing only; you cannot edit the information from this window.

## General Tab

The General tab of the List of Connections window contains the following fields:

<b>Connection Id</b>	displays the text label for the connection ID. The label must follow standard SAS syntax.
<b>Remote</b>	displays the remote host if one is specified. In order to read R/3 tables into SAS data sets on a remote SAS session, you must establish the connection to the R/3 session in the remote SAS session.
<b>Profile</b>	displays the connection profile name.
<b>Description</b>	displays a text description of the connection profile.

## RFC Tab

The RFC tab of the List of Connections window contains the following fields:

<b>Client</b>	displays the three-digit R/3 client identification number.
<b>User</b>	displays the R/3 user ID.
<b>Language</b>	displays the language used by the RFC logon.
<b>Host</b>	displays the R/3 server to which the RFC server connects. This field does not have a default value set.
<b>Destination</b>	is a logical name used by the sideinfo file, if one is defined.

*Note:* If a destination is set here, the sideinfo file will override the information entered in the other fields on the RFC tab.  $\Delta$



## TCP/IP Tab

The TCP/IP tab of the List of Connections window contains the following fields:

- Host** displays the network location of the RFC server. The default is **localhost**, and a fully qualified domain name is not required. For example, if the RFC server is reachable by using the DNS name `rfc.example.com` and is on the local area network, the **Host** field will accept either **rfc** or **rfc.example.com**. Numeric addresses are also accepted.
- Port** displays the TCP/IP port to use for communicating with the RFC server. The default port number is **6991**.

## More RFC Tab

The More RFC tab of the List of Connections window contains the following fields:

- Gateway Host** displays the gateway host that is used by the RFC server to communicate with the R/3 system. This field defaults to **Host**.
- Gateway Service** displays the communication gateway service that is used by R/3.
- System Number** displays the system number that identifies which R/3 system to access if there is more than one R/3 system that resides on the same host. At times, more than one R/3 system will be operating on the same host, such as a development or testing R/3 system that runs on the same host hardware as a production R/3 system. The default value for this field is **0**.
- Function** specifies a SAS function to call as part of the R/3 logon process.

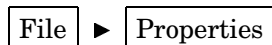
---

## General Attributes for a List of Tables Window

The General Attributes for a List of Tables window displays the descriptor, SAS Data View, and source entry for selected tables of the data model that you selected in the main window of the Datamodel Explorer.

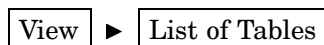
To display the General Attributes for a List of Tables window that is shown in Display 4.22 on page 36, start the Datamodel Explorer, and then select a data model from the tree diagram. Next,

- select



or

- select

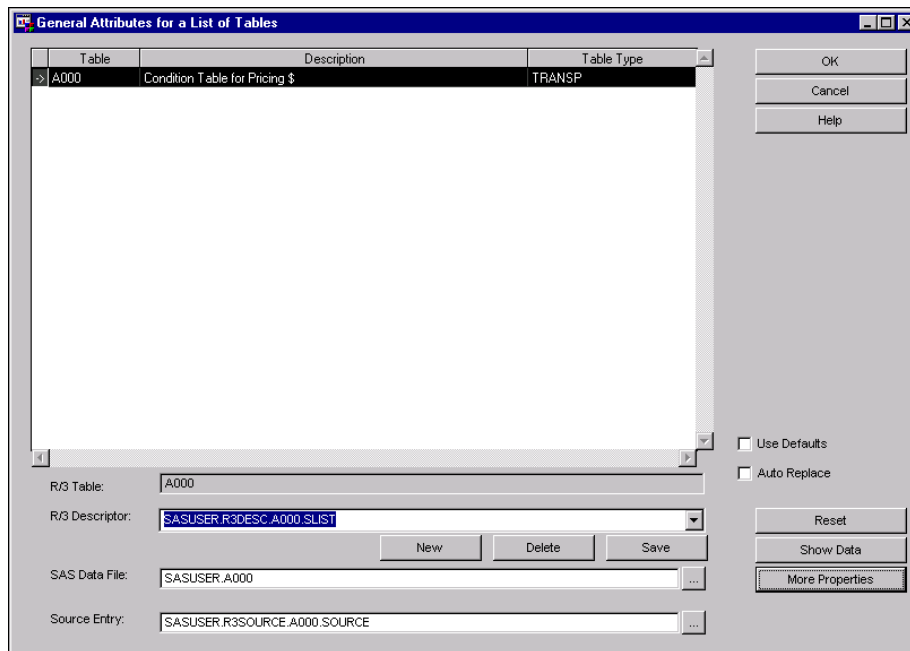


to display the List of R/3 Tables window that is shown in Display 4.31 on page 47; and then select a table and click **Properties**.

or

- right-click the selected data model, and then select **Properties** from the pop-up menu.

Display 4.22 General Attributes for a List of Tables Window



The window displays all of the tables that are associated with the data model that is selected in the main window of the Datamodel Explorer window. The three columns of the table display the table identifier, the text description of the table, and the table type.

The elements available on the General Attributes for a List of Tables window are

- Use Defaults** resets the values for the selected table to the default values.
- Auto Replace** specifies whether you want to automatically overwrite the existing descriptor, data file (either a View or a Data Set), and source library for the selected table with any changes you have made on the General Attributes for a List of Tables window. Select the check box to automatically save changes to the descriptor, data file, and source library and overwrite the existing table information when you click **Save**. Do not select the check box if you want to be prompted whether to overwrite the existing table information when you click **Save**.
- R/3 Table** displays the table identifier in the Table column on the General Attributes for a List of Tables window. This field cannot be edited.
- R/3 Descriptor** enables you to specify a descriptor for the selected table. Click the down arrow to display a pull-down list of previously saved descriptors. Right-click inside the field to display a pop-up menu that enables you to
- enter a new catalog entry name for the selected descriptor using the Enter Catalog Entry Name window that is shown in Display 4.25 on page 40.
  - save the selected descriptor.
  - load the selected descriptor.
  - delete the selected descriptor.

- SAS Data File** enables you to
- enter a new data set name for the selected descriptor using the Enter Dataset Name window that is shown in Display 4.24 on page 39.
  - save the specified SAS data file.
  - delete the specified SAS data file.

Click the ellipsis icon to the right of the field to display the Enter Dataset Name window. Right-click inside the field to display a pop-up menu that enables you to save or delete the SAS data files.

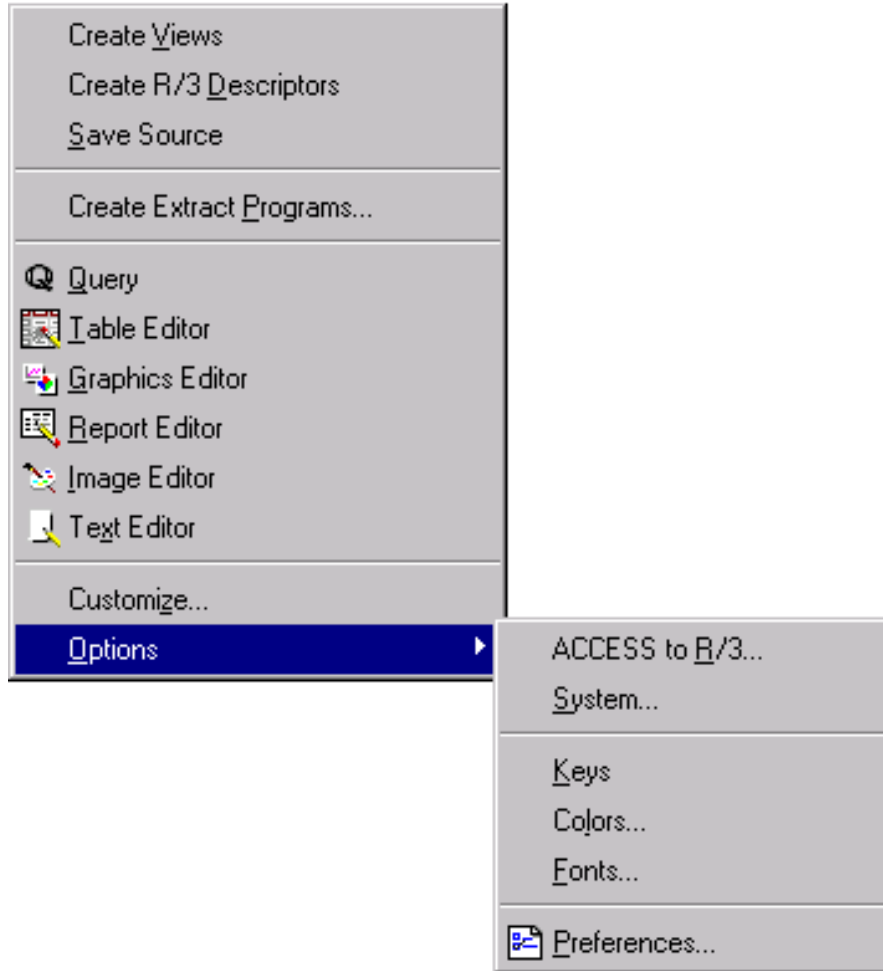
- Source Entry** enables you to
- enter a new catalog entry name using the Enter Catalog Entry Name window that is shown in Display 4.25 on page 40.
  - save the specified source entry.
  - delete the specified source entry.

Click the ellipsis icon to the right of the field to display the Enter Catalog Entry Name window. Right-click inside the field to display a pop-up menu that enables you to save or delete the source entry.

The buttons available on the General Attributes for a List of Tables window are

- |                        |   |
|------------------------|---|
| <b>OK</b>              | closes the General Attributes for a List of Tables window and returns you to the Datamodel Explorer window.   |
| <b>Cancel</b>          | closes the window without saving any changes that you have made.  |
| <b>Help</b>            | displays the SAS Help for the General Attributes for a List of Tables window.   |
| <b>Reset</b>           | applies default values.   |
| <b>Show</b>            | displays the System R/3 table.  |
| <b>More Properties</b> | displays the Attributes for a Table (Edit) window.  |
| <b>New</b>             | displays the Enter Catalog Entry Name window.   |
| <b>Delete</b>          | deletes the descriptor that is shown in the <b>R/3 Descriptor</b> field.  |
| <b>Save</b>            | creates and saves a descriptor of the same name as the selected item in the <b>R/3 Descriptor</b> field. A dialog box displays informing you that the R/3 descriptor has been created. If the descriptor already exists, a dialog box prompts you to replace the existing descriptor file or to cancel the operation. |

The General Attributes for a List of Tables window also contains additional R/3 features that are available from the Tools menu.

**Display 4.23** Tools Menu of the General Attributes for a List of Tables Window

The R/3 Tools menu commands are

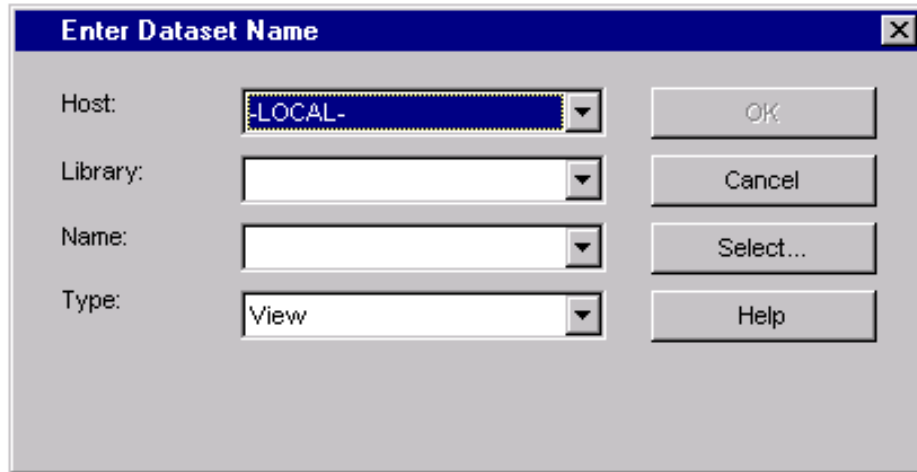
- |   |   |
|---|---|
| <b>Create Views</b>                                     | creates SAS data views to the R/3 tables. If the views already exist, a dialog box will prompt you to decide if you want to cancel, overwrite all the currently existing views, or decide on an individual view basis. A data set type of ACCR3 is added to all data sets and views created by the SAS/ACCESS Interface to R/3. |
| <b>Create R/3 Descriptors</b>                           | creates the R/3 descriptors that were the base element of the SAS/ACCESS interface to R/3 in previous releases.   |
| <b>Save Source</b>                                      | saves the generated source code to the specified source entry.  |
| <b>Create Extract Programs</b>                          | displays the Create Extract Programs window that is shown in Display 4.26 on page 41.   |
| <b>Options</b> $\triangleright$<br><b>Access to R/3</b> | displays the Application Setup window that is shown in “Application Setup Window” on page 22.   |

---

## Enter Dataset Name Window

The Enter Dataset Name window enables you to select or create a data set and specify the host and library associated with the data set. This window also enables you to specify whether the data set will be a view or a data file.

**Display 4.24** Enter Dataset Name Window



To display the Enter Dataset Name window, from the General Attributes for a List of Tables window, select a table and then select the down arrow icon to the right of the **SAS Data File** field.

The elements available on the Enter Dataset Name window are:

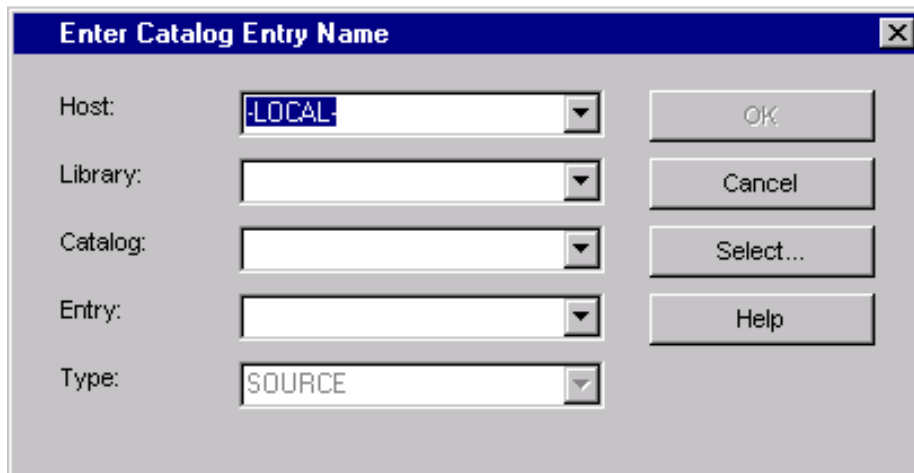
<b>OK</b>	closes the window, creating the specified data set.
<b>Cancel</b>	closes the window.
<b>Select</b>	displays a window that is used to browse for a library.
<b>Help</b>	displays the SAS Help for the window.
<b>Host</b>	specifies the host on which the data set will be stored.
<b>Library</b>	specifies the library in which the data set will be saved.
<b>Name</b>	specifies the name for the data set.
<b>Type</b>	specifies the information type for the data set. Valid values are <b>View</b> and <b>Data Set</b> .

---

## Enter Catalog Entry Name Window

The Enter Catalog Entry Name window enables you to select or create a SAS catalog entry and specify the host and library associated with the entry. This window also enables you to specify the type of the catalog entry.

Display 4.25 Enter Catalog Entry Name Window



To display the Enter Catalog Entry Name window, from the General Attributes for a List of Tables window, select a table, and then select the down arrow icon to the right of the **Source Entry** field.

The elements available on the Enter Catalog Entry Name window are:

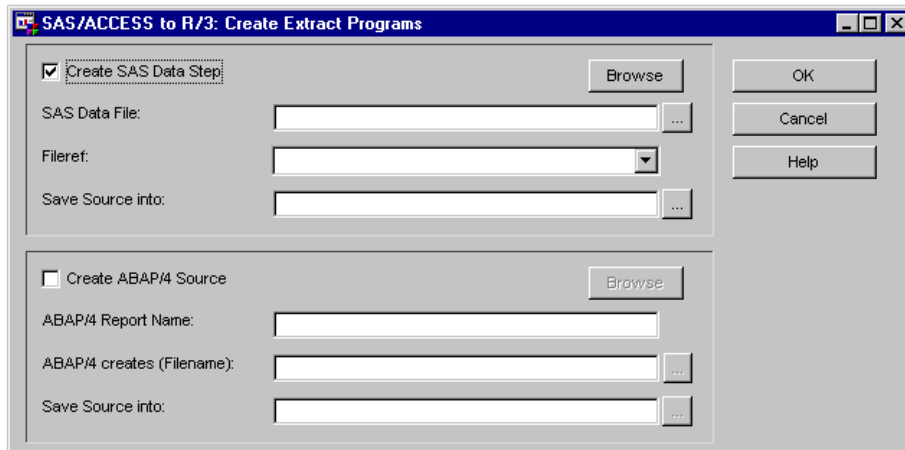
<b>OK</b>	closes the window, creating the specified catalog entry.
<b>Cancel</b>	closes the window.
<b>Select</b>	displays a window that is used to browse for a catalog.
<b>Help</b>	displays the SAS Help for the window.
<b>Host</b>	specifies the host on which the catalog entry will be stored.
<b>Library</b>	specifies the library in which the catalog entry will be saved.
<b>Catalog</b>	specifies the catalog in which the catalog entry will be saved.
<b>Entry</b>	specifies the name for the catalog entry.
<b>Type</b>	displays the information type for the catalog entry. The default is <b>SOURCE</b> .

---

## Create Extract Programs Window

The Create Extract Programs window is designed to assist in generating SAS and R/3 programs for extracting data with an intermediate external file. To display the Create Extract Programs window, from the General Attributes for a List of Tables window, select an R/3 table. Then, select **Tools** and then **Create Extract Programs** to display the Create Extract Programs window.

Display 4.26 Create Extract Programs Window

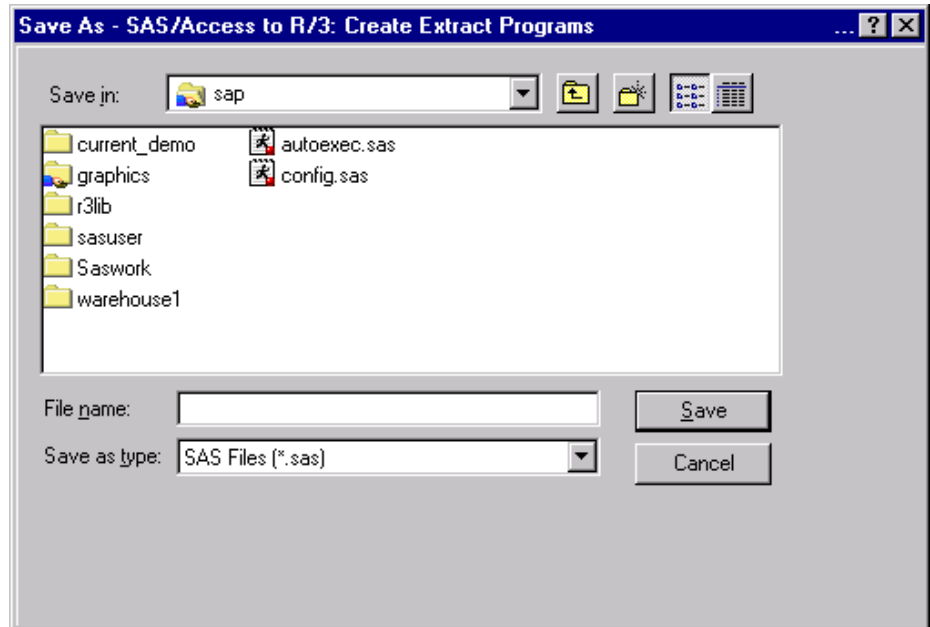


The elements available on the Create Extract Programs window are:

- OK** generates the source and saves it into the specified catalog entries.
- Cancel** closes the window.
- Help** displays the SAS Help for the Create Extract Programs window.

The two display areas are for defining parameters for creating SAS DATA steps and ABAP source files. The elements available for creating DATA steps are:

- Create SAS Data Step** enables the fields for creating a DATA step. If this check box is not selected, the associated fields are disabled.
- SAS Data File** specifies the name of the resulting SAS data set or SAS data set view. Click the icon to the right of the field to open the Enter Dataset Name window that is shown in Display 4.24 on page 39.
- Fileref** specifies the SAS file reference to the intermediate external file. It can also be a PIPE to read directly in the output of an ABAP program. Click the down arrow icon to the right of the field to display a drop-down list of available filerefs.
- Save Source into** specifies the four-level name of a SAS catalog in which to save the source code of the SAS DATA step. Click the icon to the right of the field to display the Enter Catalog Entry Name window that is shown in Display 4.25 on page 40.
- Browse** displays the SAS data file that is generated from the selections.
- Create ABAP Source** enables the fields for creating an ABAP source. If this check box is not selected, the associated fields are disabled.
- ABAP Report Name** specifies the name of the ABAP report that is being generated. The filename should begin with the letter Z.
- ABAP creates (Filename)** specifies an external filename. Click the icon to the right of the field to display the Save As window.

**Display 4.27** Save As - SAS/ACCESS to R/3: Create Extract Programs Window

**Save Source into**

specifies the four-level name of a SAS catalog in which to save the source code of the ABAP report. Click the icon to the right of the field to display the Enter Catalog Entry Name window that is shown in Display 4.25 on page 40.

**Browse**

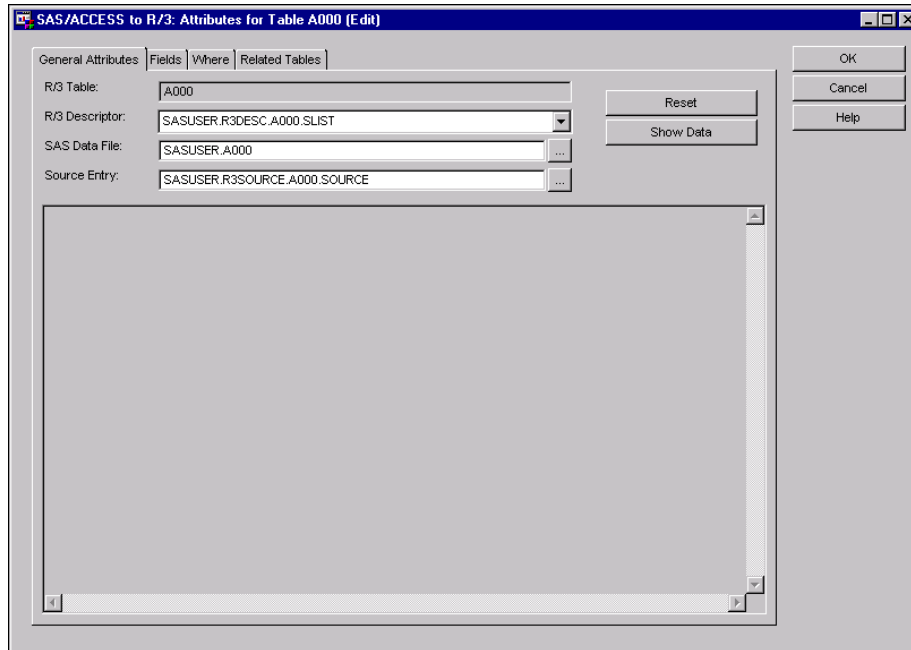
displays the generated ABAP program.

---

## Attributes for a Table (Edit) Window

The Attributes for a Table (Edit) window provides information about the characteristics of specific tables within the R/3 database. To display the Attributes for a Table (Edit) window, from the General Attributes for a List of Tables window, select an R/3 table. Click **More Properties** to display the Attributes for a Table (Edit) window. The Attributes for a Table (Edit) window contains four tabs: General Attributes, Fields, Where, and Related Tables.



**Display 4.28** Attributes for a Table (Edit) Window

The buttons on the Attributes for a Table (Edit) window are

- |               |   |
|---------------|---|
| <b>OK</b>     | closes the Attributes for a Table (Edit) window and returns you to the General Attributes for a List of Tables window, saving your changes.                               |
| <b>Cancel</b> | closes the Attributes for a Table (Edit) window and returns you to the General Attributes for a List of Tables window without saving any change that you might have made. |
| <b>Help</b>   | displays the SAS Help for the Attributes for a Table (Edit) window.   |

## General Attributes Tab

The General Attributes tab of the Attributes for a Table (Edit) window describes the source for the data and the SAS view. The General Attributes tab contains the following elements:

- |                       |   |
|-----------------------|---|
| <b>R/3 Table</b>      | specifies the R/3 table from which to read the data.  |
| <b>R/3 Descriptor</b> | enables you to specify a descriptor for the selected table. Click the down arrow to display a pull-down list of previously saved descriptors. Right-click inside the field to display a pop-up menu that enables you to <ul style="list-style-type: none"> <li><input type="checkbox"/> enter a new catalog entry name for the selected descriptor using the Enter Catalog Entry Name window that is shown in Display 4.25 on page 40.</li> <li><input type="checkbox"/> save the selected descriptor.</li> <li><input type="checkbox"/> load the selected descriptor.</li> <li><input type="checkbox"/> delete the selected descriptor.</li> </ul> |
| <b>SAS Data File</b>  | specifies the SAS data view to use with the table. Click the icon to the right of the field to display the Enter Dataset Name window that is shown in Display 4.24 on page 39.  |

<b>Source Entry</b>	specifies the source to which the DATA step is saved. Click the icon to the right of the field to display the Enter Catalog Entry Name window that is shown in Display 4.25 on page 40.
<b>Reset</b>	resets the drop-down lists to their default settings.
<b>Show Data</b>	shows the data from the R/3 table.

## Fields Tab

The Fields tab is the default tab that is selected when the Attributes for a Table (Edit) window is displayed. The Fields tab displays the field names and descriptions for the selected table.

The table on the Fields tab displays the information for each field in the selected table. For each field in the table, the table and the lower part of the tab display the

- Field Name
- Primary Key
- Description
- SAS Name
- Format
- Informat.

You can edit the SAS name, the format, and the informat in the lower part of the tab. During the import process, special characters in the Field Name such as a forward slash (/) are converted to an underscore (\_) in the SAS Name. Also, if a numeric field has more than 10 decimal places, the decimal places are omitted from the informat and the affected field is multiplied by 10\*\*(-d) in the data set.

The buttons available on the Fields tab of the Attributes for a Table (Edit) window are

<b>Select Fields</b>	displays the Select Fields for a table window shown in Display 4.29 on page 45, which allows you to choose which fields of the table are displayed or hidden in this tab.
<b>Apply</b>	saves changes made to the SAS name, the format, and the informat in the lower part of the tab.
<b>Long Desc.</b>	displays the Long Description window, which displays the long description for the selected field.

## Where Tab

The Where tab enables you to edit or build a clause to query the rows that are extracted from the R/3 table. You can use the SAS/ACCESS Interface to R/3 application to generate an ABAP WHERE clause that the application passes to the R/3 system (along with other parameters like table name, record length, and so on).

The buttons available on the Where tab of the Attributes for a Table (Edit) window are

<b>Check</b>	checks the syntax of the entered WHERE clause.
<b>Reset</b>	discards any changes made to the WHERE clause.
<b>Clear</b>	removes the WHERE statement from the entry field.
<b>Build</b>	displays the ABAP Where Expression Builder window that is shown in Display 4.30 on page 46.

## Related Tables Tab

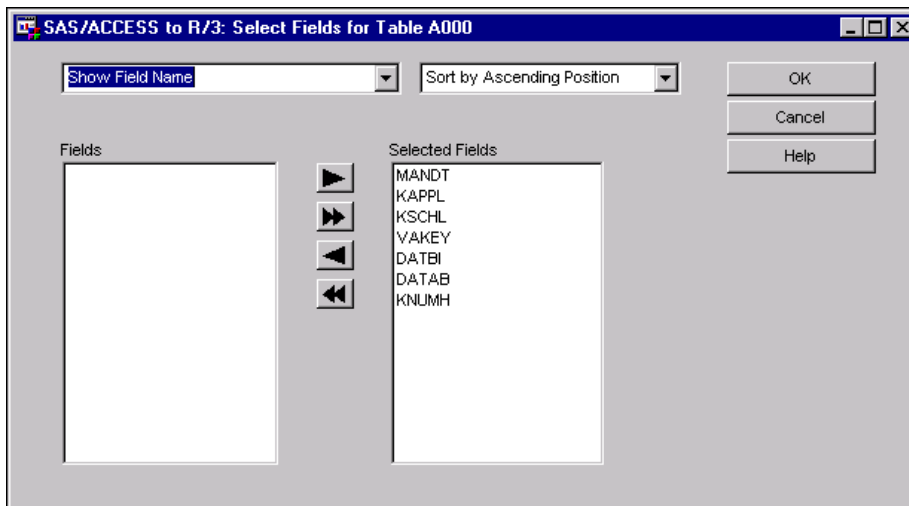
The Related Tables tab of the Attributes for a Table (Edit) window presents a cross-reference of R/3 tables (if any) that share a field with the selected table.

The Related Tables tab contains two tables: the table on the left half of the tab displays the abbreviation and description for all R/3 system tables that share a field with the selected table. Select a table name in the left-hand table to display a second table on the right half of the tab that displays the field or fields that the two tables have in common. Double-click a table to display the General Attributes for a List of Tables window and the properties for the selected table.

## Select Fields for a Table Window

To display the Select Fields for a Table window, display the Attributes for a Table (Edit) window, select the Fields tab, and then click **Select Fields**. The Select Fields for a Table window enables you to select fields for viewing and querying.

**Display 4.29** Select Fields for a Table Window



The buttons available on the Select Fields for a Table window are

- OK** closes the Select Fields for a Table window and returns you to the Attributes for a Table (Edit) window, saving your changes.
- Cancel** closes the Select Fields for a Table window and returns you to the Attributes for a Table (Edit) window without saving any changes.
- Help** displays the SAS Help for the window.

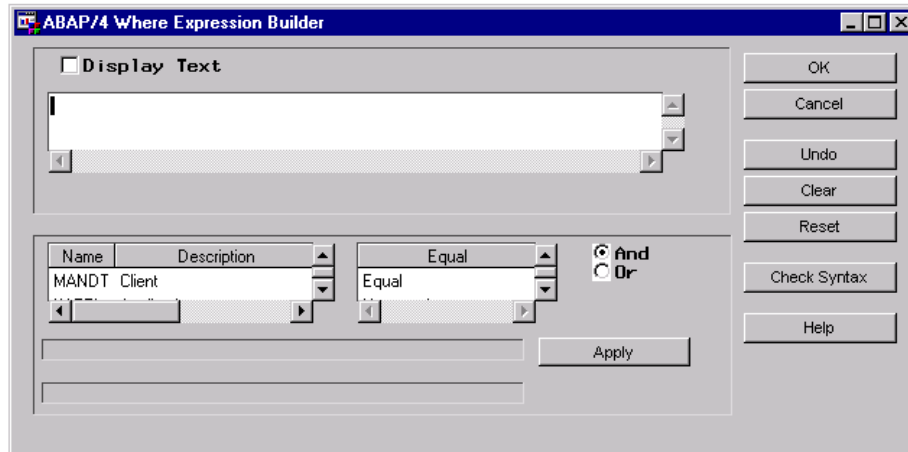
The drop-down list on the left-hand side of the window enables you to select either **Show Field Name** or **Show Field Description**. The drop-down list on the right-hand side of the window enables you to specify how the fields are sorted in the **Fields** and **Selected Fields** lists. The **Selected Fields** list shows the fields that will be listed in the General Attributes for a List of Tables window. The **Fields** list shows the fields that will not be listed in the General Attributes for a List of Tables window.

The four buttons between the **Fields** and **Selected Fields** lists are used to move fields between the two list boxes. To move a field from one list box to the other, select the field name, and then click the left arrow or the right arrow button. To move all of the fields in a list box to the other list box, click the left double arrow button or the right double arrow button.

## ABAP Where Expression Builder Window

The ABAP Where Expression Builder window enables you to create queries in ABAP syntax. To display the ABAP Where Expression Builder window, from the General Attributes for a List of Tables window, select an R/3 table. Then, click **More Properties** to display the Attributes for a Table (Edit) window, as shown in Display 4.28 on page 43, and select the Where tab. From the Where tab, click **Build** to display the ABAP Where Expression Builder window.

**Display 4.30** ABAP Where Expression Builder Window



The elements available from the ABAP Where Expression Builder window are

- |                                     |  |
|-------------------------------------|--|
| <b>Display Text</b>                 | controls whether the label name or description is displayed in the text entry field. If the check box is selected, the description is displayed. You cannot edit the text description. |
| <b>R/3 Table Variables list box</b> | displays the available variables for the selected R/3 table. Use these variables to write the WHERE statement.   |
| <b>Logical Operator list box</b>    | displays the logical operators for the WHERE statement: equal, less than, greater than, null, and so on.   |
| <b>And/Or</b>                       | controls the relation of a query clause to the following query clause. By default, <b>And</b> is selected.   |
| <b>OK</b>                           | closes the window and saves the query.   |
| <b>Cancel</b>                       | closes the window without saving any changes.  |
| <b>Undo</b>                         | deletes the last change made in the window.  |
| <b>Clear</b>                        | clears the current WHERE query.  |
| <b>Reset</b>                        | resets the query parameters to their previously saved status.  |
| <b>Check Syntax</b>                 | checks the syntax of the query as currently constructed.   |
| <b>Help</b>                         | displays the SAS Help for the ABAP Where Expression Builder window.  |
| <b>Apply</b>                        | controls the insertion of the Where clause. Select one of the valid actions from the pop-up window: <b>Insert before current line</b> ,  |

Insert after current line, Replace current line, Insert at the top, and Append at the bottom.

## Using the List of R/3 Tables

The List of R/3 Tables window enables you to view all of the R/3 system tables and information about those tables. To display the List of R/3 Tables, go to the SAS Desktop and open the SAS/ACCESS to R/3 desktop that is shown in Display 4.1 on page 17. Double-click the List of R/3 Tables icon to open the List of R/3 Tables window that is shown in Display 4.31 on page 47.

To display the List of R/3 Tables window from the Datamodel Explorer, start the Datamodel Explorer, and then select

View ► List of Tables

### List of R/3 Tables Window

The List of R/3 Tables window displays a table that lists all of the available R/3 system tables.

Display 4.31 List of R/3 Tables Window

Table name	Table type	Short text describing ABAP/4 Dictionary
A000	TRANSP	Condition Table for Pricing \$
A001	POOL	Not Used in Standard
A002	TRANSP	Domestic Taxes
A003	TRANSP	Tax Indicator
A004	POOL	Material
A005	POOL	Customer/Material
A006	POOL	Price List Type/Currency/Material
A007	POOL	Division/Customer
A008	TRANSP	Plant/Additional selling plant
A009	POOL	Additional selling plant/International Article Number
A010	POOL	Additional Selling Plant/Material
A011	TRANSP	Export Taxes
A012	POOL	Additional Selling Plant/Material Group
A013	TRANSP	Surcharge Type
A014	TRANSP	Surcharge Type/Surcharge Key
A015	POOL	Not Used in Standard
A016	POOL	Contract Item
A017	POOL	Material Info Record (Plant-Specific)
A018	POOL	Material Info Record
A019	POOL	Contract Header
A020	TRANSP	Division/Price Group
A021	POOL	Vendor/Material/Unit of Measure
A022	POOL	Material/Unit of Measure
A023	POOL	Additional Selling Plant/Material/Unit of Measure

The table shows the name, type, and a short text description for every table in R/3. The **Table Name** field enables you to enter a SAS text label for the name of the table. To display further details for a table, select a table line item from the list, and then click **Properties** to display the General Attributes for a List of Tables window. You can also double-click a line item to display the General Attributes for a List of Tables window.

## Using the List of Descriptors

The List of R/3 Descriptors window enables you to view all of the R/3 descriptors and information about those descriptors. To display the List of R/3 Descriptors, go to the SAS Desktop and open the SAS/ACCESS to R/3 desktop that is shown in Display 4.1 on page 17. Double-click the List of R/3 Descriptors icon to open the List of R/3 Descriptors window that is shown in Display 4.32 on page 48.

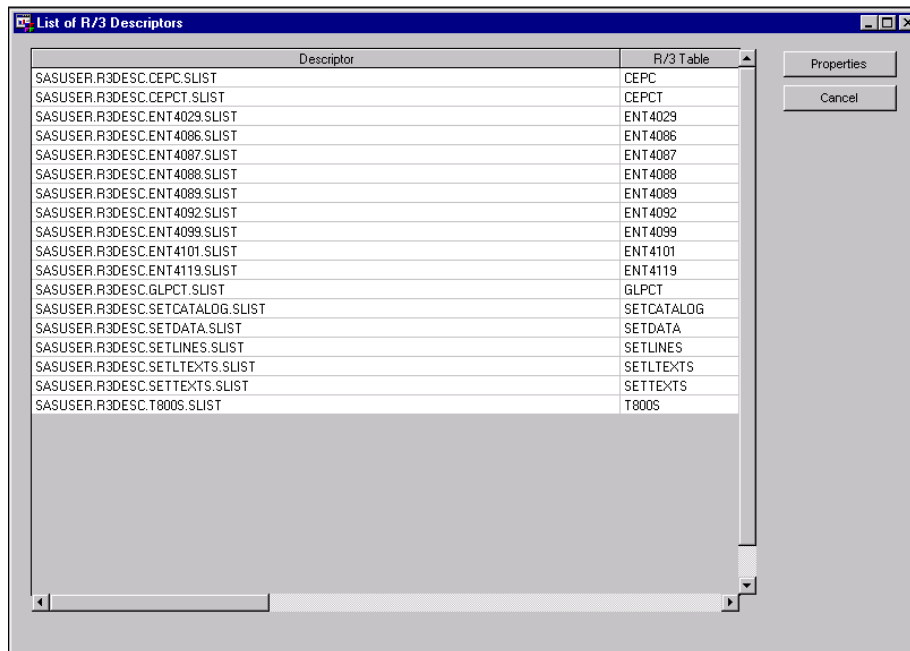
To display the List of R/3 Descriptors window from the Datamodel Explorer, start the Datamodel Explorer, and then select

View ► List of Descriptors

### List of R/3 Descriptors Window

The List of R/3 Descriptors window displays all of the descriptors that are associated with a data model that you selected using the Datamodel Explorer window. In addition to displaying the descriptors, the List of R/3 Descriptors window shows the tables that are related to each of the descriptors and the date on which the descriptor was last updated.

**Display 4.32** List of R/3 Descriptors Window



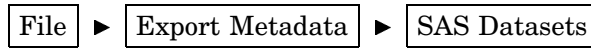
Selecting a line item in the table and clicking **Properties** displays the General Attributes for a List of Tables window that is shown in Display 4.31 on page 47.

### Export Metadata Window

The Export Metadata window enables you to define parameters for exporting metadata from R/3 tables to a SAS library.

To display the Export Metadata window:

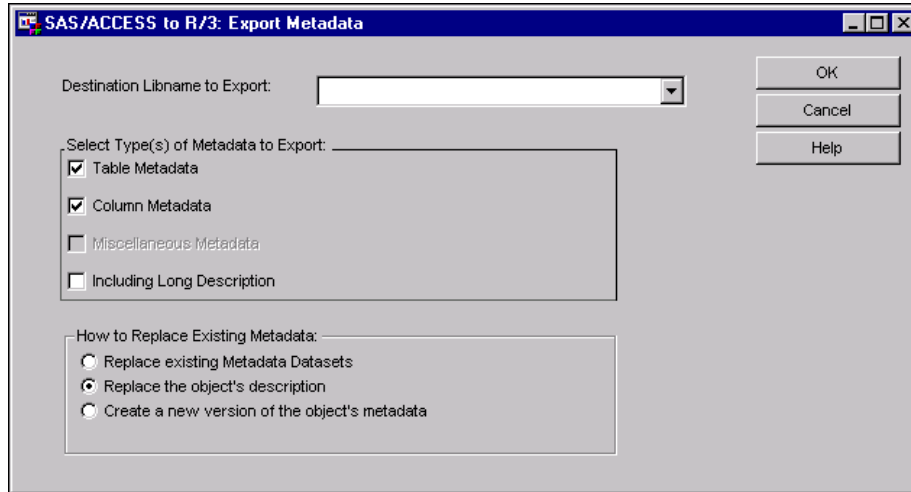
- 1 Start the Datamodel Explorer.
- 2 Select a data model and entity type.
- 3 Select



from the pull-down menu.

The Export Metadata window displays.

**Display 4.33** Export Metadata Window



From the **Destination Libname to Export** drop-down list, select the library to which you want to export metadata. A data set type of ACCR3 is added to all data sets and views created by the SAS/ACCESS Interface to R/3.

Then, select the type of metadata to export and whether to replace existing data sets or create new data sets for the metadata that you are exporting.

---

## Export Metadata to SAS/Warehouse Administrator Window

The Export Metadata to SAS/Warehouse Administrator window enables you to define parameters for exporting metadata from R/3 tables to a SAS data warehouse environment.

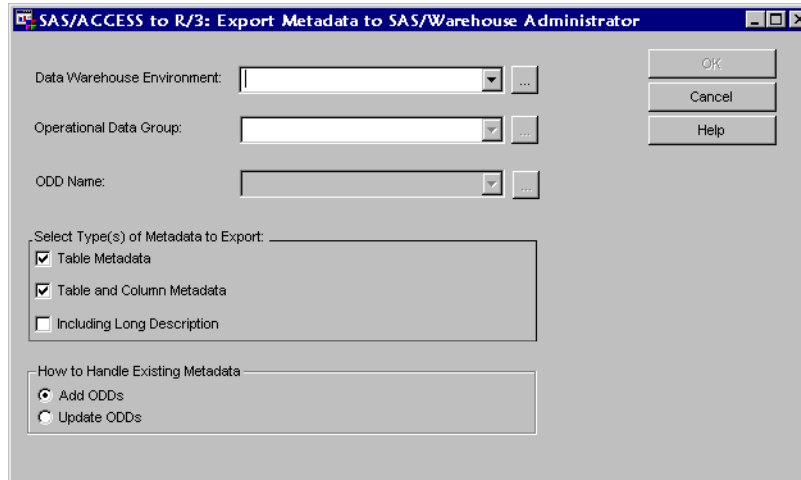
To display the Export Metadata to SAS/Warehouse Administrator window:

- 1 Start the Datamodel Explorer.
- 2 Select a data model and entity type.
- 3 Select



from the pull-down menu.

The Export Metadata to SAS/Warehouse Administrator window displays.

**Display 4.34** Export Metadata to SAS/Warehouse Administrator Window

From the **Data Warehouse Environment** drop-down list, select the environment to which you want to export metadata. To define or view properties for the selected environment, click the ellipses [...] button to display the Data Warehouse Environment Properties window, as shown in Display 4.35 on page 51. Then, from the **Operational Data Group** drop-down list, select the ODD group name, and then select or specify the ODD in the **ODD Name** field. Then, select the type of metadata to export and whether to replace existing ODDs or create new ODDs for the metadata that you are exporting.

The following information is exported from the SAS/ACCESS Interface to R/3 in order to create SAS/Warehouse Administrator operational data definitions (ODDs). An ODD is created from each Entity View and Assigned Table. Any new ODD group that is created in a SAS data warehouse by the SAS/ACCESS Interface to R/3 will have the extended attribute "Access to R/3".

**Table 4.1** ODD to Warehouse Administrator Correspondences

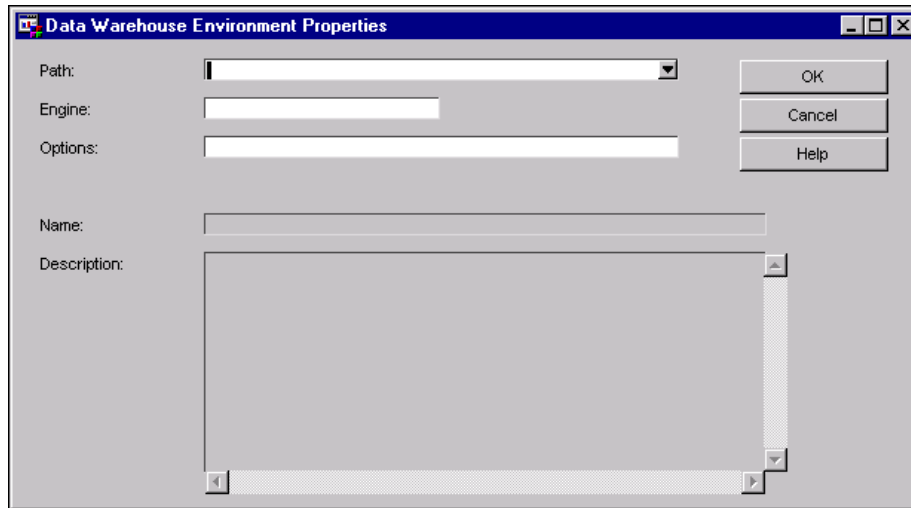
ODD	SAS/Warehouse Administrator
ODD Name	Table/Entity Name
ODD Description	Table/Entity Description
ODD Notes	Table/Entity Long Description
ODD Data Location	SAS Library
ODD Data Location	Table/View Name

Fields are exported to columns in an ODD, which should include the name, short description, format, and informat. If a field has a defined long description, it is exported as a column note. Finally, three extended attributes are created for each ODD: **CREATED BY**, **CVALUE**, and **DATAMODEL\_OR\_ENTITY\_TYPE**.

Long descriptions cannot be exported by themselves; they can be exported with table or table column metadata only.

Selecting the ellipses button to the right of the **Data Warehouse Environment** field displays the Data Warehouse Environment Properties window, which enables you to specify or view detailed information about the data warehouse environment.



**Display 4.35** Data Warehouse Environment Properties Window

The elements available on the Data Warehouse Environment Properties window are

<b>Path</b>	specifies the physical pathname of the directory for the data warehouses in the environment.
<b>Engine</b>	specifies the engine that you want to use to access the environment. The default engine is <b>v8</b> .
<b>Options</b>	specifies any LIBNAME statement options for the environment.
<b>Name</b>	displays the name of the selected data warehouse environment.
<b>Description</b>	displays a description of the environment, if present.
<b>OK</b>	closes the window, saving any entered properties.
<b>Cancel</b>	closes the window without saving any entered properties.
<b>Help</b>	displays the SAS Help for the Data Warehouse Environment Properties window.

---

## Using the Search Metadata Utility

The Search Metadata utility allows you to search the entire R/3 database for a given text string. You can optionally limit the search to tables, entities, data models, and other filtering choices.

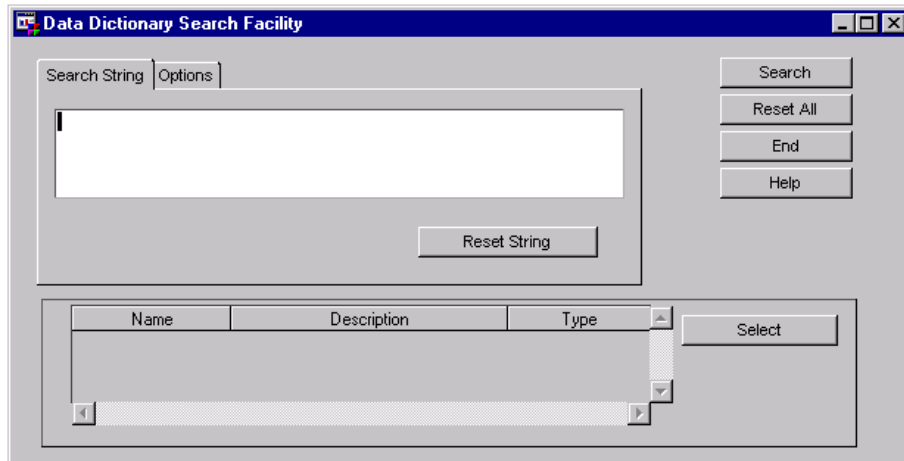
---

### Data Dictionary Search Facility Window

The Data Dictionary Search Facility window allows you to search the R/3 database by using the SAS/ACCESS Interface to R/3.

To display the Data Dictionary Search Facility window:

- 1 From the SAS desktop, open the SAS/ACCESS to R/3 desktop that is shown in Display 4.1 on page 17.
- 2 Double-click the Search Metadata icon to open the Data Dictionary Search Facility window.

**Display 4.36** Data Dictionary Search Facility Window

*Note:* You can also display the Data Dictionary Search Facility window from the Datamodel Explorer by selecting

**Tools**  $\blacktriangleright$  **Search Metadata**

from the pull-down menu.  $\Delta$

The buttons available on the Data Dictionary Search Facility window are

<b>Search</b>	performs the search for the entered string and uses the current options.
<b>Reset All</b>	clears the search string from the entry field and resets the parameters on the Options tab to their defaults.
<b>End</b>	closes the Data Dictionary Search Facility window and returns you to the Datamodel Explorer window.
<b>Help</b>	displays the SAS Help for the Data Dictionary Search Facility window.
<b>Select</b>	displays the Datamodel Explorer and expands the tree diagram to show a selected data model or entity type that was found by the query. If a table in the results table is selected when you click <b>Select</b> , the General Attributes for the List of Tables window displays.

## Search String Tab

The Search String tab enables you to query the data dictionary using a text search string. Use the Search String tab when you are searching the data dictionary for one or more specific data models.

**Text field** specifies a text string with which to search the R/3 system. Searching with a special character such as a forward slash (/) requires single quotation marks around the special character. For example, enter **and'/'or** to search for the string and/or.

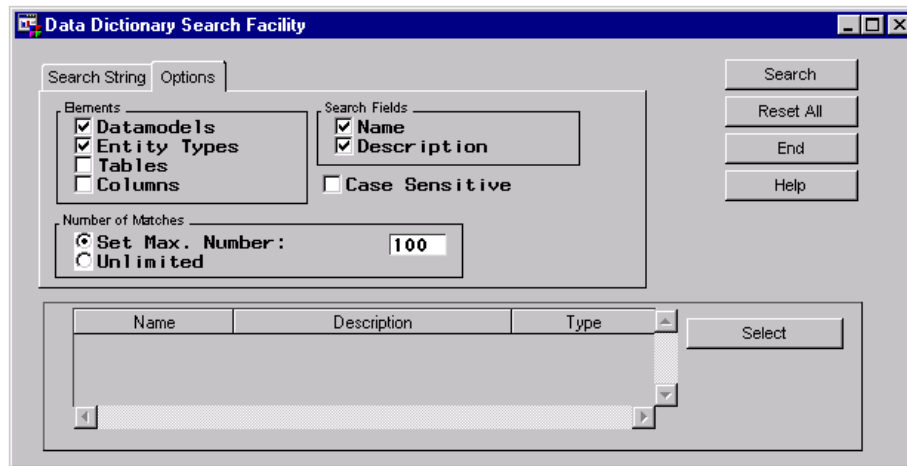
**Reset String** clears the text field.

## Options Tab

The Options tab enables you to set parameters for a query against the data dictionary. Use the Options tab to specify which elements you want to include in the

search, which fields you want to include in the search, and the number of matches you want to display in the list of results.

**Display 4.37** Options Tab of the Data Dictionary Search Facility Window



The elements available on the Options tab are

<b>Datamodels</b>	searches the data model element for the search string. By default, this check box is selected.
<b>Entity Types</b>	searches the entity element for the search string. By default, this check box is selected.
<b>Tables</b>	searches the table element for the search string. By default, this check box is selected if the window was displayed from the Search Metadata icon on the desktop. However, if the window was displayed from the Datamodel Explorer, the check box is not automatically selected.
<b>Columns</b>	searches the column element for the search string. By default, this check box is not selected.
<b>Set Max. Number</b>	enables you to customize the number of matches to display from the query. If you select this option, enter the maximum number of matches in the entry field to the right of the radio button. The default is <b>100</b> matches.
<b>Unlimited</b>	displays all matches for the query.
<b>Name</b>	searches the name field for the search string. By default, this check box is selected.
<b>Description</b>	searches the description field for the search string. By default, this check box is selected.
<b>Case Sensitive</b>	requires that the case match the query specifications.

---

## Performing Batch Operations

You can use batch operations to automate processes; for example, you can use them for overnight operations or to simplify connections for end users.

To open the connection for a batch operation, use the following:

```
%r3connb(profile=profile-name, libref=SAS-libref, function=OPEN);
```

- profile-name** specifies the name of the profile that is used to save the info in the Logon to R/3 window.
- SAS-libref** specifies the SAS library where the profile was saved. If this parameter is not specified, the profile will be looked for in the SAS libraries WORK, SASUSER, and R3LIB (in that order).
- function=OPEN** opens the connection.

To close the connection, use the following:

```
%r3connb(profile=profile-name, libref=SAS-libref, function=CLOSE);
```

or

```
%r3connb(id=connection-id, function=CLOSE);
```

- profile-name** specifies the name of the profile that is used to save the info in the Logon to R/3 window.
- SAS-libref** specifies the SAS library where the profile was saved. If this parameter is not specified, the profile will be looked for in the SAS libraries WORK, SASUSER, and R3LIB (in that order).
- function=CLOSE** disconnects from the R/3 system.
- connection\_id** specifies the connection ID.

## Source Parameter

Previous versions of the SAS/ACCESS Interface to R/3 included the use of a source parameter in the batch connection. For backward compatibility, use of the source parameter as described below is still supported, although not recommended.

Submit the following macro in SAS to set up the connection for batch:

```
%r3connb (source = libref.catalog.entry.SOURCE );
```

If operating in batch mode, disconnect before exiting by issuing the following command in SAS:

```
%r3connb (source = libref.catalog.entry.SOURCE, function = close);
```

## Passwords

In batch processing, all parameters to log on to an R/3 system are generally stored in permanent SAS catalog entries. If you do not want to store all parameters, particularly the user ID, password, and client, you can use the following SAS code to prompt the user for this information. In this scenario, all other connection information—the function module name, the gateway host, or the gateway service—have to be entered in the Application Setup window when you create the SAS DATA step view.

```
/*-----*/
/* This SAS program demonstrates how to prompt a user */
/* for the R/3 user ID, password, client, and          */
/* language information.                               */
/* The remote processing is enclosed in comments.    */
/*-----*/
```

```

*--- reset password ---*;
  %let pwd=;

*--- set the message text ---*;
  %let message=Please enter the R/3 logon parameter;

*--- prompt the user for the parameters ---*;
  %macro secure;
    %global usr pwd cli lng;
    %window R3 columns=80 rows=15
      #2 @5 message 50 protect=yes
      #4 @5 "User      : " usr 10 required=yes
      #6 @5 "Password: " pwd 10 display=no required=yes
      #8 @5 "Client   : " cli 3 required=yes
      #10 @5 "Language : " lng 1 required=yes;
    %display R3;
  %mend secure;

  %secure;

/* === for remote processing ===== */

*--- macro to pass macro variables to ---*;
*--- a remote SAS session ---*;
  %macro syslput(macvar,macval,remote=);
    %let str=%str(rsubmit &remote );
    %nrstr(%let) %str(&macvar = &macval ; endrsubmit);
    &str ;
  %mend syslput;

*--- pass macro variables to the remote SAS session ---*;
  %syslput(usr,&usr);
  %syslput(pwd,&pwd);
  %syslput(cli,&cli);
  %syslput(lng,&lng);

*--- submit the code to the remote SAS session ---*;
  rsubmit;

=== end of remote processing ===== */

*--- a temporary catalog entry for the connection ---*;
*--- parameters ---*;
  %let source=work.r3conn.conn1.source;

*--- the connection id ---*;
*--- ATTENTION: This has to be the same connection ID ---*;
*--- as the one that was used to create the views. ---*;
  %let cconn=conn1;

*--- the host/port where the RFC server program ---*;
*--- is running ---*;
  %let tcphost=cafe7.eur.sas.com;

```

```
%let port=6991;

*--- set the R/3 host parameter ---*;
%let hst=hostname;

*--- save the parameters to the temporary catalog ---*;
*--- entry ---*;
proc display c=sapr3.sr3dbi.savconnb.scl;
run;

*--- connect to the R/3 system ---*;
%r3connb(source=&source);

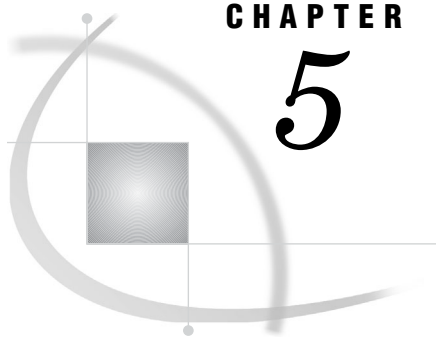
*--- use the Data Step view you have created with the ---*;
*--- SAS/ACCESS Interface to R/3 ---*;

*--- close the connection to the R/3 system ---*;
%r3connb(source=&source, function=close);

/* === for remote processing
=====
endrssubmit;

=== end of remote processing

===== */
*--- end of sample program ---*;
```



## CHAPTER

## 5

## Using the RFC Server

---

<i>Overview of the RFC Server</i>	57
<i>ABAP Function Modules and Programs</i>	58
<i>Using the RFC Server on UNIX</i>	58
<i>Using the RFC Server on Windows NT</i>	60
<i>Using the RFC Server in Batch Mode</i>	61
<i>Using the RFC Macros and Macro Variables</i>	62
<i>Using the R/3 BAPI Connector: Logon Window</i>	73

---

### Overview of the RFC Server

The RFC server is part of the SAS/ACCESS Interface to R/3 as described in Chapter 3, “Accessing and Using R/3 Data,” on page 11. The RFC server is a component of the SAP LIBNAME engine that provides access to the data in SAP R/3 and SAP BW systems. The RFC server also supports calling ABAP RFC functions. The RFC server uses the TCP/IP protocol for communication with the SAP LIBNAME engine. For more information about the SAP LIBNAME engine, see “Overview of the LIBNAME Engine for SAP” on page 75.

The RFC server

- runs independently of SAS as a background process on
  - the SAS host
  - the R/3 host
  - another machine entirely.
- can be configured to listen on any TCP/IP port (default **6999**).
- can have more than one concurrent instance on a given machine (but each instance must have a unique port number). Each instance can communicate with many SAP R/3 or SAP BW system servers.
- can process requests from multiple SAP application servers.

---

## ABAP Function Modules and Programs

Some of the ABAP function modules and programs that were available in the SAS/ACCESS Interface to R/3, Release 8.2, are no longer used in version 9 and later of the SAS/ACCESS Interface to R/3. These function modules and programs were used by the RFC server and the dialog RFC server that were included in the software prior to these releases. The new RFC server and RFC dialog server no longer use the following ABAP function modules and programs:

- **Z\_SAS\_BATCH\_INTERFACE\_4**
- **Z\_SAS\_READ\_TABLE\_CPIC**
- **ZSASRDTB**
- **ZSASRDBT**

Version 9 and later of the SAS/ACCESS Interface to R/3 also include SAP transport files that you can use to install the ABAP function modules and programs. It is recommended that you import the SAP transport files rather than installing the ABAP function modules and programs manually. For more information about installing ABAP function modules and programs using version 9 and later of the SAS/ACCESS Interface to R/3, refer to the *Installation Instructions for SAS/ACCESS Interface to R/3*.

*Note:* The transport files for the SAS/ACCESS for R/3 contain different ABAP function modules and programs than the transport files for the SAS/ACCESS Interface to SAP BW. Make sure you use the correct files when installing your application.  $\Delta$

---

## Using the RFC Server on UNIX

In a UNIX environment, the SAS RFC server for SAP is installed in the **!SASROOT/saspgm/dbi/bin** directory. You must add this directory to the **PATH** environment variable and add the location of the shared libraries to the appropriate environment variable. For more detailed information about how to set up the environment variables, see *Installation Instructions for SAS/ACCESS Interface to R/3*.

To start the SAS RFC server in a UNIX environment, use the following command

```
sasrfc_server [-d 0|1|2|3|4|5|6] [-n name] [-p port] [-w workdir] [-N namespace]
              [-V variant] [-help] [-c dialog_compat_port]
```

where optional parameters are enclosed in brackets [ ].

To stop the RFC server in a UNIX environment, use the following command

```
sasrfc_server [-k] [-p port]
```

where optional parameters are enclosed in brackets [ ].

The options for the SAS RFC server command for UNIX are as follows:

**-d n** specifies whether to run the server as a daemon process or as an application and specifies the diagnostic level.

The server is run as a daemon process when you specify **-dn** where  $n=0$  or when you do not specify the **-dn** option. After successful initialization, all messages are routed to **syslog**.



When you specify the `-dn` option where  $n$  = any number between 1 and 6, the program runs as an application and messages are routed to standard error. Higher diagnostic levels route more detailed messages to standard error.

<code>-k</code>	stops the service.
<code>-n name</code>	specifies the name of the service. This option is used to distinguish multiple daemon processes. For example, a test service might be started as <code>-n test</code> .
<code>-p port</code>	identifies the port number on which the service listens. The default port number is <b>6999</b> .
<code>-w workdir</code>	specifies the working directory. For example, if your working directory is named <code>tmp</code> , specify the option as follows: <code>-w /tmp</code> .
<code>-N namespace</code>	specifies the namespace for ABAP functions and programs that are used by SAS. The default value is <code>/SAS/</code> . If the ABAP programs are installed in the customer namespace rather than in the <code>/SAS/</code> namespace, then this parameter identifies where the ABAP programs are installed.
<code>-V variant</code>	specifies the R/3 report variant that is assigned to this server. You must assign a report variant for each RFC server that accesses an R/3 application server in batch mode. The variant parameter <code>G_DEST</code> specifies a unique destination to call back to the RFC server.
<code>-help</code>	specifies that you want to display command line Help.
<code>-c dialog_compat_port</code>	identifies the option that, when specified, runs the RFC server in V8 compatibility mode on the port indicated by the <code>dialog_compat_port</code> parameter. The port number must be different than the one used for the V9 requests. If the <code>-c</code> option is omitted, no dialog compatibility will be available.

For example, to start the SAS RFC server as a daemon process with the name of **test** on port number **6991**, use the following command:

```
sasrfc_server -n test -p 6991
```

The following example command shows how to display command line Help:

```
sasrfc_server
```

To start the SAS RFC server with debug level **4** on port number **6991**, use the following command:

```
sasrfc_server -d 4 -p 6991
```

To stop a SAS RFC server that is running on port number **6991**, use the following command:

```
sasrfc_server -k -p 6991
```

## Using the RFC Server on Windows NT

In a Windows NT environment, the SAS RFC server for SAP is installed in the **!SASROOT\access\sasexe** directory.

To start or stop the SAS RFC server using a command line in the Windows NT environment, use the following command:

```
sasrfc_server [-i n] [-r] [-s] [-k] [-t n] [-d n] [-n name[,desc]] [-p port]
              [-N namespace] [-V variant] [-help] [-c dialog_compat_port]
```

The options for the SAS RFC server command for Windows NT are as follows:

- i n** installs the program as a Windows service and specifies the startup option for a new service. Startup options are
  - n*=2 starts the service automatically
  - n*=3 starts the service on demand
  - n*=4 disables the service.
- r** removes the program from the Service Manager.
- s** starts the service.
- k** stops the service.
- t n** sets the startup option for an existing service. Startup options are
  - n*=2 starts the service automatically
  - n*=3 starts the service on demand
  - n*=4 disables the service.
- d n** specifies the diagnostic level. When you specify the **-d n** option where *n*= any number between 1 and 6, the program runs as an application and messages are routed to standard error. Higher diagnostic levels route more detailed messages to standard error.
- n name,desc** specifies the name and description of the service.
- p port** specifies the port number on which the server listens. The default port number is **6999**.
- N namespace** specifies the namespace for ABAP functions and programs that are used by SAS. The default value is **/SAS/**. If the ABAP programs are installed in the customer namespace rather than in the **/SAS/** namespace, then this parameter identifies where the ABAP programs are installed.
- V variant** specifies the R/3 report variant that is assigned to this server. You must assign a report variant for each RFC server that accesses an R/3 application server in batch mode. The variant parameter **G\_DEST** specifies a unique destination to call back to the RFC server.
- help** specifies that you want to display command line Help.
- c dialog\_compat\_port** identifies the option that, when specified, runs the RFC server in V8 compatibility mode on the port indicated by the *dialog\_compat\_port* parameter. The port number for a 9.1 request must be different than the one used for the version 9 requests. If the **-c** option is omitted, no dialog compatibility will be available.

For example, if you want to start the RFC server with a debug level of 1 on port number 6991, use the following command:

```
sasrfc_server -d 1 -p 6991
```

To install the RFC server as a service with automatic startup on port 6991 and use the name **test** and a description of '**Test RFC server**', use the following command:

```
sasrfc_server -i 2 -n ''test,Test RFC server'' -p 6991
```

To uninstall the server that was started in the previous example, use the following command:

```
sasrfc_server -r -n ''test''
```

---

## Using the RFC Server in Batch Mode

The RFC server can perform batch mode processing of RFC calls to the SAP system. Users who submit interactive RFC calls to the SAP system might encounter time-out limitations. This occurs when interactive SAP jobs exceed the default processing time-out limit of 10 minutes.

By allowing batch mode processing of RFC calls to the SAP system, time-out limitations for interactive SAP dialog processes are resolved. Batch mode processing is often employed to reduce the use of dialog processes and to reduce the impact of extractions (a SAS program reading the tables and views of the SAP system by means of the LIBNAME engine) on the SAP system. Batch processes usually run at a lower priority. Batch mode processes of RFC calls can also help control the number of simultaneous extractions.

The ABAP program that is normally generated (by another ABAP program), executes a requested read and join operation on the database table(s). When operating in batch mode, the RFC server creates and releases an SAP job to execute this ABAP program. The RFC server then waits for the job that is running the ABAP program to start and to recall the RFC server. Finally, the resulting data stream (that the RFC server receives from the SAP system) is passed on to the LIBNAME engine.

LIBNAME or data set option: BATCH | BATCH\_MODE | BATCHMODE= 0|1|Y|N

Indicates whether the RFC server should use SAP batch jobs for the data extracts.

Y	RFC uses batch jobs to extract R/3 data
N	RFC uses dialog processes to extract R/3 data

The default value for this option is N.

To submit batch requests to the RFC server, an RFC destination and a variant for ABAP program /SAS/Z\_SAS\_READ must be set up for each RFC server instance. Before the RFC server can execute requests as a batch job the following steps must be performed:

- 1 *Create an RFC server destination.* For each RFC server that accesses an SAP system, a destination must be set up on that SAP system. The program ID and the gateway information defined in the destination are used to register the RFC server on an SAP gateway. If two RFC servers are used to read data from one SAP

application server, two RFC destinations must be set up on that SAP application server.

- 2 *Create a variant of ABAP program /SAS/Z\_SAS\_READ.* After defining the destination for the RFC server, you will need to make the RFC destination known to the ABAP program. This is done by creating a variant for the ABAP program /SAS/Z\_SAS\_READ. The concept of variants provides a way of parameterizing ABAP programs. For each defined destination, a variant needs to be created that references the destination. Variants are client dependent.
- 3 *Start the RFC server with the variant.* For more information about using the RFC server and particularly the sasrfc server option, see “Using the RFC Server on UNIX” on page 58 and “Using the RFC Server on Windows NT” on page 60.

For further information about the setup of RFC server destinations and variants, see the *Installation Instructions to SAS/ACCESS Interface to R3*.

---

## Using the RFC Macros and Macro Variables

The SAS/ACCESS Interface to R/3 includes several SAS macros and SAS macro variables that enable you to communicate with the RFC server. The following SAS macros and SAS macro variables are available:

### `%CALLRFC`

enables you to call a specified R/3 function. For more information about using the `%CALLRFC` macro, see “`%CALLRFC`” on page 62.

### `%R3CONN`

enables you to use a profile to log on to the R/3 system for batch processing. For more information about using the `%R3CONN` macro, see “`%R3CONN`” on page 67.

### `%R3CONN`

enables you to log on to the R/3 system when performing batch processing. For more information about using the `%R3CONN` macro, see “`%R3CONN`” on page 68.

### `%R3CONN`

enables you to log off of the R/3 system when performing batch processing. For more information about using the `%R3CONN` macro, see “`%R3CONN`” on page 70.

### `RFC_LOGON_INFO`

enables you to specify the logon information and connection parameters that are used in the `%CALLRFC` macro. For more information about using the `RFC_LOGON_INFO` macro variable, see “`RFC_LOGON_INFO`” on page 71.

---

## **`%CALLRFC`**

**Calls a specified RFC-enabled R/3 function module**

**Type:** autocall macro

**See also:**

“Using the R/3 BAPI Connector: Logon Window” on page 73

“RFC\_LOGON\_INFO” on page 71

---

## Syntax

```
%CALLRFC(<RFC-enabled function module name> EXPORTING <parameter string>
IMPORTING <parameter string> INTABLES <parameter string> OUTTABLES
<parameter string> USING <parameter string>)
```

## Details

%CALLRFC is a SAS macro that allows you to call any RFC-enabled R/3 function module that you specify. Function modules that are called using this macro must

- be RFC-enabled
- be synchronous
- have no user interaction.

The parameters for %CALLRFC are as follows:

EXPORTING	<p>passes field values or structures to the specified R/3 function module. The EXPORTING parameters are declared as import parameters in the function interface and are defined as follows:</p> <ul style="list-style-type: none"> <li><input type="checkbox"/> <i>p1=value1 ... pn=valuen</i>            These parameters are passed as field values to the specified R/3 function module.</li> <li><input type="checkbox"/> <i>p1.n1=value p1.n2=value2 ... pn.vn=valuen</i>            These parameters are passed as elements of a structured parameter (a complex parameter that contains fields).</li> </ul>
IMPORTING	<p>passes field values or structures from the specified R/3 function module back to SAS. The IMPORTING parameters are defined as follows:</p> <ul style="list-style-type: none"> <li><input type="checkbox"/> <i>p1=var1 ... pn=varn</i>            The <i>p1 ... pn</i> parameters are export parameters declared in the function interface.            The <i>var1 ... varn</i> parameters are SAS macro variables that are used to pass the values from the RFC server back to SAS. The macro variables must be defined before the function call is submitted.</li> <li><input type="checkbox"/> <i>p1=dataset1 pn=datasetn</i>            Parameters that are written into a data set require a two-level data set name. Writing parameters into data sets can be useful for structured parameters.</li> </ul>
INTABLES	<p>passes references to input SAS data sets. The INTABLES parameters are defined as follows:</p> <ul style="list-style-type: none"> <li><input type="checkbox"/> <i>p1=dataset1 ... pn=datasetn</i>            The SAS data sets are converted into internal tables and are passed to the specified function module.</li> </ul> <p><i>Note:</i> The variable names in the SAS data set must match the field names of the internal table as they are defined in the function interface. <math>\Delta</math></p>

- OUTTABLES** specifies references to output SAS data sets. The OUTTABLES parameters are defined as follows:
- *p1=dataset1 ... pn=datasetn*  
Internal tables passed back to SAS from the specified function module are converted into SAS data sets.
- USING** specifies alternate connection parameters when you log on to the R/3 system. By default, the %CALLRFC macro uses the connection parameters that are defined in the RFC\_LOGON\_INFO variable. However, if you want to use an alternate set of connection parameters, create a variable that contains those parameters and reference that variable in the USING parameter.
- Note:* The alternate logon variable must be defined before the function call is submitted. △

*Note:* If an error occurs while the %CALLRFC macro is executing, the macro variables &SYSRC and/or &SYSERR contain a nonzero value. (See “Example 4” on page 65.) The ABAP function module might also contain parameters to return error conditions to the calling program. These return codes can be written into a SAS macro variable and checked in the SAS program. (See “Example 5” on page 66.) △

## Using

The following macro variables are used with the %CALLRFC macro:

- RFC\_LOGON\_INFO  
defines the R/3 BAPI connection parameters that are required to access the SAP R/3 system. You can specify these connection parameters by using the RFC\_LOGON\_INFO macro string or by using the R/3 BAPI Connector window, which is automatically displayed if you do not use the RFC\_LOGON\_INFO macro string when you submit your %CALLRFC macro statement. The following connection parameters are required:
  - CLIENT
  - USER
  - PASSWD (or PASSWDX)
  - LANG

*Note:* If any of the required values are missing, the user is prompted to provide the missing information. △

The RFC\_LOGON\_INFO macro variable also requires some connection information. The connection parameters should be defined as follows:

- If you use the saprfc.ini, specify the DEST value.
- If you use a specific application server, specify the ASHOST and SYSNR values.
- If you use Load Balancing, specify the MSHOST, R3NAME, and GROUP values.

*Note:* Load Balancing is available only if the CALLRFC executable has been linked using Release 4.0 or higher of the RFCSDK. △

For more information about defining the RFC\_LOGON\_INFO variable, see “RFC\_LOGON\_INFO” on page 71. For more information about using the R/3 BAPI Connector window, see “Using the R/3 BAPI Connector: Logon Window” on page 73.

## Example 1

The following example shows how to use the %CALLRFC macro to read data from an SAP R/3 system into a SAS data set:

```
%callrfc(RFC_SYSTEM_INFO
         IMPORTING RFCSI_EXPORT=WORK.RFCSI_EXPORT);
```

In this example, the %CALLRFC macro calls the RFC-enabled function module named RFC\_SYSTEM\_INFO and writes the system information output to the SAS data set WORK.RFCSI\_EXPORT.

## Example 2

The following example shows how to specify the logon parameters for the %CALLRFC macro using the RFC\_LOGON\_INFO:

```
%let RFC_LOGON_INFO CLIENT=010 USER=TestUser
                   PASSWD=TestPwd LANG=E
                   ASHOST=HostName SYSNR=02;
%callrfc(RFC_SYSTEM_INFO
         IMPORTING RFCSI_EXPORT=WORK.RFCSI_EXPORT);
```

In this example, TestUser is connecting to a specific application server to read data from the R/3 system into a temporary SAS data set named WORK.RFCSI\_EXPORT.

## Example 3

The following example demonstrates how to use SAS dates in the function call:

```
%let MRETURN=;
%callrfc(BAPI_COSTCENTER_GETLIST
         EXPORTING CONTROLLINGAREA=1000
         DATE=%sysfunc(date (), yymmddn8.)
         IMPORTING RETURN=MRETURN
         OUTTABLES COSTCENTER_LIST=WORK.COSTCENTER_LIST);
```

In this example, the %CALLRFC macro is used to call the function module named BAPI\_COSTCENTER\_GETLIST. The function call reads the list of cost centers for controlling area 1000 for the current date and writes the output list into a temporary SAS data set named WORK.COSTCENTER\_LIST. The return code of the function call is written to the SAS macro variable MRETURN. Note that the macro variable is defined before the %CALLRFC macro is used.

## Example 4

The following example illustrates how to use the &SYSRC and &SYSERR macro variables to check for errors that occur while the %CALLRFC macro is executing:

```
%macro example4;
%callrfc(INVALID_FUNCTION_CALL);
  %if %eval(&sysrc) ne 0 or %eval(&syserr) ne 0 %then %do;
    %put An error occurred while calling the function.
    %put sysrc=&sysrc syserr=&syserr;
  %end;
%mend;
%example4;
```

In this example, a new macro named %EXAMPLE4 is created. %EXAMPLE4 uses the SAS macro variables &SYSRC and &SYSERR to check return codes from the %CALLRFC macro. The new macro also generates an error message if errors occurred.

## Example 5

The following example shows how to use the parameters in the function module to check for errors that occurred during the execution of the %CALLRFC macro:

```
%macro example5;

%global bapi_return;

    /* create the input data set */
data WORK.IDRANGE;
sign='I';
option='BT';
low='0000000000';
high='9999999999';
output;
run;

%callrfc(BAPI_CUSTOMER_GETLIST
        IMPORTING RETURN=BAPI_RETURN
        INTABLES IDRANGE=WORK.IDRANGE
        OUTTABLES ADDRESSDATA=WORK.ADDRESSES);
%if %substr(&bapi_return,1,1)=E or
    %substr(&bapi_return,1,1)=W %then %do;
    %put An error occurred while calling the BAPI_CUSTOMER_GETLIST function.;
    %put bapi_return=&bapi_return;
%end;

%else %do;
    proc print data=WORK.ADDRESSES;
    run;
%end;
%mend;

%example5;
```

In this example, a new macro named %EXAMPLE5 is created to retrieve a list of customers from the R/3 system. The range of customer numbers to be retrieved is specified in the SAS data set WORK.IDRANGE. This data set is then used as the input table in the function call. The information for customers between customer number 0000000000 and 9999999999 will be read into the SAS data set WORK.ADDRESSES. The function parameters contain return codes and messages from the BAPI\_CUSTOMER\_GETLIST function. The structure of the return parameter is defined in the function interface. In this example, the first character in the return string contains the message type. E indicates an error message and W indicates a warning message.



---

## %R3CONN

**Connects to or disconnects from an R/3 system using a profile**

Type: batch macro

---

### Syntax

```
%R3CONN(PROFILE=value, LIBREF=value, FUNCTION=open | close, ID=value,
SOURCE=value)
```

### Details

The %R3CONN macro allows you to log on to and log off of the R/3 system using parameters stored in the data set LIBREF.R3CONN under the profile name. Profiles that connect to and disconnect from the R/3 system can be used for batch operation, such as overnight processing, and to simplify the logon process for end users.

The parameters for %R3CONN are as follows:

PROFILE	identifies the name of the profile that contains the information used in the Logon to R/3 window.
LIBREF	identifies the SAS library containing the LIBREF.R3CONN data set. This data set contains the logon parameters defined for the profile.
FUNCTION	specifies whether you want to open or close the connection to the R/3 system. Valid values are <ul style="list-style-type: none"> <li><input type="checkbox"/> OPEN</li> <li><input type="checkbox"/> CLOSE</li> </ul>
ID	specifies the connection ID that is associated with the profile. <p><i>Note:</i> This parameter was defined for previous versions of this macro and is supported in this release for backward compatibility. However, it is recommended that this parameter not be used. <math>\Delta</math></p>
SOURCE	specifies the logon parameters that are defined in SOURCE type catalog entries. Although the SOURCE parameter is supported in this version, logon parameters should now be defined in profiles that are stored in a SAS data set. <p><i>Note:</i> This parameter was defined for previous versions of this macro and is supported in this release for backward compatibility. However, it is recommended that this parameter not be used. <math>\Delta</math></p>

### Example 1

The following example shows how to use the %R3CONN macro to connect to the R/3 system using a profile:

```
%r3conn(PROFILE=BatchUser, LIBREF=batch, FUNCTION=open);
```

In this example, the profile BatchUser is used to connect to the R/3 system. The BatchUser profile uses the connection parameters stored in the BATCH.R3CONN data set.

## Example 2

The following example shows how to use the %R3CONNB macro to disconnect from the R/3 system by using a profile:

```
%r3connb(PROFILE=BatchUser, LIBREF=batch, FUNCTION=close);
```

The BatchUser profile was used to connect to the R/3 system. This example demonstrates how to use the %R3CONNB macro to close the BatchUser profile's connection to the R/3 system.

---

## %R3CONNC

### Connects to an R/3 system

**Type:** batch macro

**See also:** “%R3CONNE” on page 70

---

### Syntax

```
%R3CONNC(CCONN=value, HOST=value, PORT=value, USR=value, PWD=value,  
CLI=value, LNG=value, HST=value, DST=value, SNA=value, R3=value,  
SYS=value, GWS=value, GWH=value, FUNC=value, CPICUSR=value,  
CPICPWD=value, CPICCLI=value, CPICLNG=value, CPICDST=value,  
CPICFRM=value, DEBUG=value, REMSESS=value)
```

### Details

The %R3CONNC macro allows you to connect to an R/3 system. This macro can be used to log on to the R/3 system during batch operation.

The parameters for %R3CONNC are as follows:

CCONN	specifies the connection identifier to be used when connecting to the R/3 system.
HOST	specifies the name of the TCP/IP host to be used when connecting to the RFC server.
PORT	specifies the TCP/IP port to be used when connecting to the RFC server.
USR	specifies the R/3 user ID to be used when connecting to the R/3 system.
PWD	specifies the encoded R/3 password to be used when connecting to the R/3 system.
CLI	specifies the R/3 client to be used with the R/3 system.
LNG	specifies the R/3 logon language to be used with the R/3 system.
HST	specifies the R/3 host name to be used when connecting to the R/3 system.
DST	specifies the R/3 destination name to be used when using the SIDEINFO file to specify connection parameters.

SNA	specifies whether the RFC server connects to an R/2 system. Valid values are <ul style="list-style-type: none"> <li><input type="checkbox"/> Y — RFC server connects to an R/2 system.</li> <li><input type="checkbox"/> blank — RFC server is <i>not</i> connecting to an R/2 system.</li> </ul>
R3	specifies whether the RFC server is connecting to an R/3 system. Valid values are <ul style="list-style-type: none"> <li><input type="checkbox"/> Y — RFC server is connecting to an R/3 system.</li> <li><input type="checkbox"/> blank — RFC server is <i>not</i> connecting to an R/3 system.</li> </ul>
SYS	specifies the R/3 system number. This parameter can be specified here or in the SIDEINFO file.
GWS	specifies the TCP service of the SAP gateway. This parameter can be specified here or in the SIDEINFO file.
GWH	specifies the name of the host on which the SAP gateway is running. This parameter can be specified here or in the SIDEINFO file.
FUNC	specifies the R/3 function module to be used.
CPICUSR	specifies the R/3 user identifier for CPIC.
CPICPWD	specifies the encoded R/3 password for CPIC.
CPICCLI	specifies the R/3 client for CPIC.
CPICLNG	specifies the R/3 logon language for CPIC.
CPICDST	specifies the destination for CPIC communication (as defined in the TXCOM table in the R/3 system).
CPICFRM	specifies the form for CPIC.
DEBUG	specifies whether you want to use the trace option. Valid values are <ul style="list-style-type: none"> <li><input type="checkbox"/> Y — Use the trace option.</li> <li><input type="checkbox"/> blank — Do <i>not</i> use the trace option.</li> </ul>
REMSESS	specifies the SAS/CONNECT remote session ID to be used when connecting to the R/3 system.

*Note:* The SIDEINFO file provides the connection parameters required for the RFC server to communicate with the R/3 system. The SIDEINFO file is not needed if you specify all connection parameters in the %RCONN macro.  $\Delta$

## Example 1

The following example shows how to use the %R3CONN macro to connect to an R/3 system when you specify a specific application server:

```
%r3conn(CCONN=IDES, USR=USER1, PWD=D27A927AD9E768,
        CLI=800, LNG=EN, HST=HostName1, SYS=02,
        CPICUSR=CPICUSER, CPICPWD=6FD3E4BAC4);
```

In this example, USER1 is connecting to an R/3 system on an application server named HostName1 with a system number of 02.

## Example 2

The following example shows how to use the %R3CONNC macro to connect to an R/3 system and an RFC server that runs on a specified application server:

```
%r3connc(CCONN=IDES, USR=USER1, PWD=D27A927AD9E768, CLI=800, LNG=EN,
        HOST=HostName2, PORT=6998,
        HST=HostName1, SYS=02,
        CPICUSR=CPICUSER, CPICPWD=6FD3E4BAC4);
```

In this example, SAS connects to an R/3 application server (HostName1) with the system number of 02 using an RFC server running on a separate host (HOSTNAME2) on port 6998.

## Example 3

The following example shows how to use the %R3CONNC macro and a SIDEINFO file to connect to an R/3 system identified by a logical destination:

```
%r3connc(CCONN=IDES, USR=USER1, PWD=D27A927AD9E768,
        CLI=800, LNG=EN, DST=SYSTEM1,
        CPICUSR=CPICUSER, CPICPWD=6FD3E4BAC4);
```

In this example, USER1 is connecting to an R/3 system. The R/3 system is identified by a logical destination (SYSTEM1), and the connection information is defined in the SIDEINFO file.

---

## %R3CONNE

### Disconnects from an R/3 system

Type: batch macro

See also: “%R3CONNC” on page 68

---

### Syntax

```
%R3CONNE(CCONN=value, REMSESS=value)
```

### Details

The %R3CONNE macro allows you to disconnect from the R/3 system. This macro can be used to log out of the R/3 system during batch operation.

The parameters for %R3CONNE are as follows:

CCONN	specifies the connection identifier that is associated with the current session.
REMSESS	specifies the SAS/CONNECT remote session identifier that is associated with the current remote session.

## Example

The following example shows how to use the %R3CONNE macro to disconnect from an R/3 system:

```
%r3conne(CCONN=IDES);
```

In this example, the %R3CONNE macro is used to terminate the R/3 connection with an ID of IDES.

---

## RFC\_LOGON\_INFO

**Defines the connection parameters that are required to access the SAP R/3 system**

**Type:** optional macro variable

**Applies to:** %CALLRFC macro

**See also:**

“%CALLRFC” on page 62

“Using the R/3 BAPI Connector: Logon Window” on page 73

---

## Syntax

```
%let RFC_LOGON_INFO=ID=value ID=value ... ID=value
```

*Note:* Values are case-sensitive. IDs are not.  $\Delta$

## Details

RFC\_LOGON\_INFO is a macro variable that is used with the %CALLRFC macro. The RFC\_LOGON\_INFO variable uses the following parameters:

Parameter ID	Description
TYPE	identifies the type of RFC server. Valid values are 2 - identifies an R/2 server 3 - (default) identifies an R/3 server E - identifies an external server.
CLIENT	is a required value that identifies the SAP logon client.
USER	is a required value that specifies the SAP user logon ID.
PASSWD	is a required value that identifies the SAP logon password. This value is not required if a PASSWDX value is specified.
LANG	is a required value that identifies the SAP logon language. Specify the 1-byte SAP language (E for English, D for German, etc.) 2-byte ISO language (EN for English, DE for German, etc.)
LCHECK	specifies the logon check option at OPEN time. Valid values are 0 - logon without check 1 - (default) logon with check.

Parameter ID	Description
TRACE	specifies the RFC trace option. Valid values are 0 - (default) without trace 1 - with trace.
DEST	identifies the logical destination in the saprfc.ini file, if applicable. When you use an R/2 RFC server, you must also define this destination in the SIDEINFO file for the SAP gateway. This value is required when you use the saprfc.ini.
GWHOST	specifies the host name of the SAP gateway if you use an R/2 or external RFC server.
GWSERV	identifies the service of the SAP gateway if you use an R/2 or external RFC server.
MSHOST	specifies the host name of the message server if you use Load Balancing. This value is required if you use Load Balancing.
R3NAME	specifies the name of the R/3 system if you use Load Balancing. This value is required if you use Load Balancing.
GROUP	specifies the name of the group of application servers if you use Load Balancing. This value is required if you use Load Balancing.
ASHOST	identifies the host name of the specific application server to be used. This value is required if you use a specific application server.
SYSNR	identifies the R/3 system number if you use a specific application server and do not use Load Balancing. This value is required if you use a specific application server.
ABAP_DEBUG	specifies the ABAP debugger option. Valid values are 0 - (default) run without the ABAP debugger 1 - run with the ABAP debugger. Note: If you use the ABAP_DEBUG option, the SAP GUI must be installed.
PASSWDX	identifies the SAS-encrypted SAP logon password.

## Example 1

The following example shows how to specify logon information for the %CALLRFC macro using the RFC\_LOGON\_INFO macro variable:

```
%let RFC_LOGON_INFO CLIENT=010 USER=USER1
                    PASSWD=USERPWD LANG=E
                    MSHOST=HostName R3NAME=BIN GROUP=Public;
%callrfc(RFC_SYSTEM_INFO
        IMPORTING RFCSI_EXPORT=WORK.RFCSI_EXPORT);
```

In this example, USER1 is connecting to a server that uses Load Balancing to read R/3 data into a temporary data set called WORK.RFCSI\_EXPORT.

## Example 2

The following example shows how to specify logon information for the %CALLRFC macro using the RFC\_LOGON\_INFO macro variable:

```
%let RFC_LOGON_INFO=CLIENT=010 USER=USER1
                        PASSWD=USERPWD LANG=E
                        ASHOST=HostName SYSNR=02;
%callrfc(RFC_SYSTEM_INFO
        IMPORTING RFCSI_EXPORT=WORK.RFCSI_EXPORT);
```

In this example, USER1 is connecting to a specific application server to read R/3 data into a temporary data set called WORK.RFCSI\_EXPORT.

---

## Using the R/3 BAPI Connector: Logon Window

The R/3 BAPI Connector: Logon window is automatically displayed if you do not use the RFC\_LOGON\_INFO macro string when you submit your %CALLRFC macro statement. The R/3 BAPI Connector: Logon window enables you to define the R/3 BAPI connection parameters that are required to access the SAP R/3 system.

**Display 5.1** R/3 BAPI Connector: Logon Window

The screenshot shows a dialog box titled "R/3 BAPI Connector: Logon". It has a standard Windows-style title bar with minimize, maximize, and close buttons. The main area contains a list of labels on the left and corresponding text input fields on the right. The labels are: Client, User, Password, Language, Destination, Host, System number, Gateway host, and Gateway service. To the right of these fields are three buttons: "OK", "Cancel", and "Help".

For more information about the %CALLRFC macro, see “%CALLRFC” on page 62. For more information about using the RFC\_LOGON\_INFO macro string, see “RFC\_LOGON\_INFO” on page 71.

The following fields are available on the R/3 BAPI Connector: Logon window:

<b>Client</b>	enables you to identify the SAP logon client. This field is required.
<b>User</b>	enables you to identify the SAP user logon ID. This field is required.
<b>Password</b>	enables you to enter the SAP user password. This field is required.
<b>Language</b>	enables you to specify the SAP logon language. Specify the 1-byte SAP language (E for English, D for German, and so on) or the

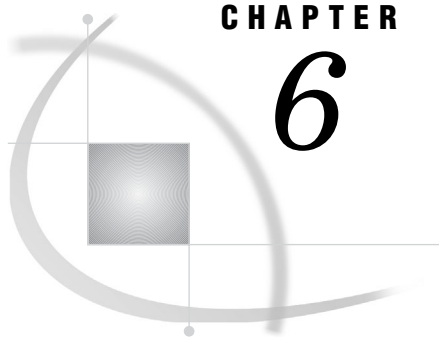
2-byte ISO language (EN for English, DE for German, and so on). This field is required.

<b>Destination</b>	enables you to identify the logical destination of the saprfc.ini file, if applicable. When you use an R/2 RFC server, you must also define this information in the sideinfo file for the SAP gateway. This field is required if you use the saprfc.ini. For more information about the sideinfo file, see “Sideinfo File” on page 22.
<b>Host</b>	enables you to identify the application server host. This field is required if a specific application server will be used.
<b>System number</b>	enables you to identify the R/3 system number if you are using a specific application server and are not using Load Balancing. This field is required if you use a specific application server.
<b>Gateway host</b>	enables you to identify the host name of the SAP gateway if you use an R/2 or external RFC server.
<b>Gateway service</b>	enables you to identify the service of the SAP gateway if you use an R/2 or external RFC server.

The following buttons are available on the R/3 BAPI Connector: Logon window:

<input type="button" value="OK"/>	submits the R/3 BAPI connection parameters that you entered and attempts to log on to the R/3 system.
<input type="button" value="Cancel"/>	closes the R/3 BAPI Connector: Logon window without submitting the connection parameters and attempting to logon to the R/3 system.
<input type="button" value="Help"/>	displays the SAS Help for the window.





## CHAPTER

## 6

## Using the LIBNAME Statement for SAP

<i>Overview of the LIBNAME Engine for SAP</i>	75
<i>LIBNAME Statement Syntax for SAP</i>	75
<i>SAP LIBNAME Engine Options</i>	76
<i>SAS LIBNAME Statement Options for the SAP Engine</i>	85
<i>SAS Data Set Options for the SAP Engine</i>	90
<i>Examples</i>	93
<i>Example 1 — Accessing the SAP Server From a Local Host</i>	93
<i>Example 2 — Changing the User Logon Language</i>	94
<i>Example 3 — Defining an SAP Destination from the SAP Logon Utility</i>	94
<i>Example 4 — Defining an SAP Destination from the saprfc.ini File</i>	94

### Overview of the LIBNAME Engine for SAP

The SAP LIBNAME engine is a read-only engine that allows you to access tables and views from SAP R/3 and SAP BW systems. The SAP LIBNAME engine accesses an SAP system through a connection to the SAS RFC server and is part of the SAS solution to access data in a SAP system. When a connection to the SAP system is successfully established and you are logged on to the system, the RFC server sends system information back to the LIBNAME engine.

The 9.1 SAP LIBNAME engine supports new features such as load balancing, user validation at log on, more efficient handling of projections, and server-side joins. Directory processing is also supported.

*Note:* Unlike other library engines, these interfaces are read-only and do not support any forms of data set creation, deletion, or modification.  $\Delta$

### LIBNAME Statement Syntax for SAP

**LIBNAME** *libref* R3 <Options>;

<b>libref</b>	specifies a valid SAS name that serves as an alias to associate SAS with the SAP tables and view. It is any SAS name when you are assigning a new libref.
<b>R3</b>	explicitly specifies the R/3 library engine.
<b>&lt;Options&gt;</b>	names one or more options honored by the R/3 engine, delimited with blanks.

The SAP LIBNAME statement assigns a library and allows the SAP engine to establish the connection to the SAP system. It checks (by default) the logon information

including: user, password, language, and client. This is done by establishing the connection to the RFC server and sending the logon information to the RFC server.

A user specifies a LIBNAME statement for the engine, and then can use that libref throughout SAS, wherever a libref is valid.

---

## SAP LIBNAME Engine Options

The following LIBNAME options apply to the SAP LIBNAME Engine.

ABAPFM="ABAPFM= abap\_function\_name "on page 76  
 ABAPPROG="ABAPPROG= abap\_program "on page 77  
 ASHOST="ASHOST= application\_server\_host" on page 77  
 BATCH="BATCH= 0 | 1 | Y | N "on page 77  
 CLIENT="CLIENT= client" on page 78  
 DESTINATION="DESTINATION= destination" on page 78  
 GROUP="GROUP= application\_server\_group "on page 78  
 GWHOST="GWHOST= gateway\_host\_name "on page 79  
 GWSERV="GWSERV= gateway\_service "on page 79  
 HOST="HOST= rfc\_server\_host" on page 79  
 IEEE\_REVERSE="IEEE\_REVERSE= Y | N" on page 80  
 INENCODING = "INENCODING = code\_page" on page 80  
 LANGUAGE = "LANGUAGE = language" on page 80  
 MAX\_TABLE\_JOINS = "MAX\_TABLE\_JOINS = number "on page 81  
 MSHOST="MSHOST= message\_server\_host "on page 81  
 NUMC\_SAS\_TYPE = "NUMC\_SAS\_TYPE = N | C | \$" on page 81  
 PASSWORD="PASSWORD= password" on page 82  
 PASSWORDX="PASSWORDX= encrypted-password" on page 82  
 PORT="PORT= rfc\_server\_port "on page 83  
 R3NAME="R3NAME= system\_name "on page 83  
 RFC\_STRING="RFC\_STRING= additional\_rfc\_options "on page 83  
 SAPLOGON\_ID="SAPLOGON\_ID= saplogon\_id" on page 84  
 SYSNR="SYSNR= system\_number" on page 84  
 TRACE="TRACE= 0 | 1 | Y | N" on page 84  
 USER="USER= user" on page 85

---

### ABAPFM= abap\_function\_name

Indicates the name of the ABAP function module that the RFC server uses internally

Valid in: SAS/ACCESS LIBNAME statement for SAP

Default value: /SAS/Z\_SAS\_DIALOG

---

#### Syntax

ABAPFM | ABAPFUNCTION | ABAPFUNC = abap\_function\_name

Indicates the name of the ABAP function module that the RFC server uses internally. The default value for this option is /SAS/Z\_SAS\_DIALOG and is set by the RFC server.

---

## **ABAPPROG= abap\_program**

Indicates the name of the ABAP program that the RFC server uses internally

Valid in: SAS/ACCESS LIBNAME statement for SAP

Default value: /SAS/Z\_SAS\_READ

---

### **Syntax**

ABAPPROG | ABAPREPORT | ABAPPROGRAM = abap\_program

Indicates the name of the ABAP program that the RFC server uses internally. The default value for this option is /SAS/Z\_SAS\_READ and is set by the ABAP function module.

---

## **ASHOST= application\_server\_host**

Indicates the host name or IP address of a specific SAP application server

Valid in: SAS/ACCESS LIBNAME statement for SAP

Default value: none

---

### **Syntax**

ASHOST | HST | RFCHOST | R3HOST = application\_server\_host

Indicates the host name or IP address of a specific SAP application server.

---

## **BATCH= 011YIN**

Indicates whether the RFC server should use SAP batch jobs for the data extracts

Valid in: SAS/ACCESS LIBNAME statement for SAP

Default value: N

---

### **Syntax**

BATCH | BATCH\_MODE | BATCHMODE = 0|1|Y|N

**Y**

specifies that the RFC uses batch jobs to extract R/3 data.

**N**

specifies that the RFC uses dialog processes to extract R/3 data.

Indicates whether the RFC server should use SAP batch jobs for the data extracts. The default value for this option is N.

---

## CLIENT= client

**Specifies the SAP logon parameter client**

**Valid in:** SAS/ACCESS LIBNAME statement for SAP

**Default value:** SAP system default

---

### Syntax

CLIENT | CLI | RFCCLIENT | RFCCLI = client

Indicates the SAP logon parameter client. Examples for a client are 000 or 800. The default value for this option is the SAP system default. When accessing the SAP R/3 system or the SAP BW system via the LIBNAME engine, you must specify valid logon information including client, user name, password, and language. The RFC server performs a logon check at OPEN time.

---

## DESTINATION= destination

**Indicates the destination in saprfc.ini if working with saprfc.ini**

**Valid in:** SAS/ACCESS LIBNAME statement for SAP

**Default value:** none

---

### Syntax

DESTINATION | DEST | DST | DSTN = destination

Indicates the destination in saprfc.ini if working with saprfc.ini. If the RFC server is an R/3 system, then this destination must also be defined in the SIDEINFO file for the SAP gateway.

---

## GROUP= application\_server\_group

**Indicates the name of the group of SAP application servers**

Valid in: SAS/ACCESS LIBNAME statement for SAP

Default value: none

---

### Syntax

GROUP= application\_server\_group

Indicates the name of the group of SAP application servers if using load balancing.

---

## **GWHOST= gateway\_host\_name**

Indicates the host name of the SAP gateway

Valid in: SAS/ACCESS LIBNAME statement for SAP

Default value: none

---

### Syntax

GWHOST | GATEWAY\_HOST = gateway\_host\_name

Indicates the host name of the SAP gateway.

---

## **GWSERV= gateway\_service**

Indicates the service of the SAP gateway

Valid in: SAS/ACCESS LIBNAME statement for SAP

Default value: none

---

### Syntax

GWSERV | GATEWAY\_SERVICE = gateway\_service

Indicates the service of the SAP gateway.

---

## **HOST= rfc\_server\_host**

Indicates the host of the RFC server to be used to connect to the SAP system

Valid in: SAS/ACCESS LIBNAME statement for SAP

Default value: localhost

---

### Syntax

HOST | RFC\_SERVER\_HOST | RFC\_SERVER | SASRFC\_SERVER |  
SASRFC\_SERVER\_HOST = rfc\_server\_host

Indicates the host of the RFC server to be used to connect to the SAP system. The default value for this option is localhost.

---

## IEEE\_REVERSE= YIN

**Indicates whether floating point numbers are byte reversed**

**Valid in:** SAS/ACCESS LIBNAME statement for SAP

**Default value:** Y or N depending on platform

---

### Syntax

IEEE\_REVERSE = Y|N

#### Y

Indicates that floating point numbers are byte reversed.

#### N

Indicates that floating point numbers are not byte reversed.

Indicates whether floating point numbers are byte reversed. The default value for this option is Y for an R/3 application server on Windows NT, and N for the other platforms.

---

## INENCODING = code\_page

**Indicates the code page**

**Valid in:** SAS/ACCESS LIBNAME statement for SAP

**Default value:** none

---

### Syntax

INENCODING = code\_page

Indicates the code page. The code page identifies characters and symbols that can be printed, displayed on terminals, and used in SAP programs.

---

## LANGUAGE = language

**Indicates the SAP logon parameter language**

**Valid in:** SAS/ACCESS LIBNAME statement for SAP

**Default value:** SAP system default

---

## Syntax

LANGUAGE | LANG | LNG | RFCLANG | RFCLNG = language

Indicates the SAP logon parameter language. The value for language is either the 2-byte ISO-language key or the 1-byte SAP language. Examples for the language include EN, DE or E, D. The default value for this option is the SAP system default. When accessing the SAP R/3 system or the SAP BW system via the LIBNAME engine, you must specify valid logon information including client, user name, password and language. The RFC server performs a logon check at OPEN time.

---

## MAX\_TABLE\_JOINS = number

Indicates the number of tables that can be used in a left-outer join or an inner join in ABAP Open SQL

Valid in: SAS/ACCESS LIBNAME statement for SAP

Default value: 25

---

## Syntax

MAX\_TABLE\_JOINS | MAX\_TABLES\_JOIN | MAX\_TABLES\_JOINS

| MAX\_TABLE\_JOIN = number

Indicates the number of tables that can be used in a left-outer join or an inner join in ABAP Open SQL. The default value for this option is 25.

---

## MSHOST= message\_server\_host

Indicates the host name of the message server

Valid in: SAS/ACCESS LIBNAME statement for SAP

Default value: none

---

## Syntax

MSHOST= message\_server\_host

Indicates the host name of the message server (if using load balancing).

---

## NUMC\_SAS\_TYPE = NICI\$

Indicates the SAS type for ABAP type NUMC

Valid in: SAS/ACCESS LIBNAME statement for SAP

**Default value:** C

---

### Syntax

NUMC\_SAS\_TYPE | NUMC\_SASTYPE | NUMC\_TYPE | NUMC = N | C | \$

**N**

Number

**C**

Character

**\$**

Character

Indicates the SAS type for ABAP type NUMC. The default is C.

---

## PASSWORD= password

**Indicates the SAP logon parameter password**

**Valid in:** SAS/ACCESS LIBNAME statement for SAP

**Default value:** none

---

### Syntax

PASSWORD | PASSWD | PWD | PW | PASS = password

Indicates the SAP logon parameter password. When accessing the SAP R/3 system or the SAP BW system via the LIBNAME engine, you must specify valid logon information including client, user name, password and language. The RFC server performs a logon check at OPEN time.

---

## PASSWORDX= encrypted-password

**Indicates the SAP logon parameter password in an encrypted form**

**Valid in:** SAS/ACCESS LIBNAME statement for SAP

**Default value:** none

---

### Syntax

PASSWORDX | PASSWDX | PWDX | PWX | PASSX= encrypted password

Indicates the SAP logon parameter password in an encrypted form. It uses the encryption type that is used in the SAS/ACCESS Interface to R/3, Version 8. It is supported for compatibility with the Version 8 connection profile.



---

## PORT= rfc\_server\_port

Indicates the port number of the RFC server to be used to connect to the SAP system

Valid in: SAS/ACCESS LIBNAME statement for SAP

Default value: 6999

---

### Syntax

PORT | RFC\_SERVER\_PORT | RFCSERVERPORT | SASRFC\_SERVER\_PORT |  
SASRFCSERVERPORT = rfc\_server\_port

Indicates the port number of the RFC server to be used to connect to the SAP system. The default value for this option is 6999.

---

## R3NAME= system\_name

Indicates the name of the R/3 system

Valid in: SAS/ACCESS LIBNAME statement for SAP

Default value: none

---

### Syntax

R3NAME= system\_name

Indicates the name of the R/3 system (if using load balancing).

---

## RFC\_STRING= additional\_rfc\_options

Indicates additional logon or connection parameters for the RfcOpenEx() call

Valid in: SAS/ACCESS LIBNAME statement for SAP

Default value: none

---

### Syntax

RFC\_STRING | RFCSTRING | RFC\_OPTIONS\_EXT | RFCOPENEX |  
ADDITIONAL\_RFC\_OPTIONS = additional\_rfc\_options

Indicates additional log on or connection parameters for the RfcOpenEx() call. The RFC server uses the RfcOpenEx() call to log on to the SAP system. With this option, parameters that are not LIBNAME options can be passed to the RfcOpenEx() call.

### RFC\_STRING Example

```
RFC_STRING = "ABAP_DEBUG=1"
```

*Note:* When using RFC\_STRING="ABAP\_DEBUG=1", the ABAP debugger is invoked to debug the ABAP programs used by the engine. The SAP GUI on the RFC server host is required to use the ABAP\_DEBUG=1 option. △

---

## SAPLOGON\_ID= saplogon\_id

Indicates the string defined for SAPLOGON on 32-bit Windows

Valid in: SAS/ACCESS LIBNAME statement for SAP

Default value: none

---

### Syntax

SAPLOGON\_ID= saplogon\_id

Indicates the string defined for SAPLOGON on 32-bit Windows.

---

## SYSNR= system\_number

Indicates the R/3 system number

Valid in: SAS/ACCESS LIBNAME statement for SAP

Default value: none

---

### Syntax

SYSNR |SYS |SYSTEM |SYSNO = system\_number

Indicates the R/3 system number. It is the 2-byte code that identifies the system on the host. For example: 00 or 01.

---

## TRACE= 0 |1|Y|N

Indicates whether the RFC server should trace the requests

Valid in: SAS/ACCESS LIBNAME statement for SAP

Default value: 0

---

### Syntax

TRACE= 0 |1|Y|N

- 0**  
Specifies that RFC trace is switched off.
- 1**  
Specifies that RFC trace is switched on.
- Y**  
Specifies that RFC trace is switched on.
- N**  
Specifies that RFC trace is switched off.

Indicates whether the RFC server should trace the requests. If the trace option is switched on, the RFC server writes log information into a file. The RFC library logs messages in the file dev\_rfc. The default value for this option is 0.

---

## USER= user

Indicates the SAP logon parameter user.

Valid in: SAS/ACCESS LIBNAME statement for SAP

Default value: none

---

## Syntax

USER | USR | RFCUSER | USERNAME | USERID= user

When accessing the SAP R/3 system or the SAP BW system via the LIBNAME engine, you must specify valid logon information including the client, user name, password, and language. The RFC server performs a logon check at OPEN time.

---

## SAS LIBNAME Statement Options for the SAP Engine

The following list describes the SAP interface support for SAS /ACCESS LIBNAME options and presents default values where applicable. For further information, refer to the *SAS/ACCESS 9.1 for Relational Databases: Reference*.

CONNECTION="CONNECTION= LIBNAME Option" on page 86

CONNECTION\_GROUP="CONNECTION\_GROUP= LIBNAME Option" on page 86

DBGEN\_NAME="DBGEN\_NAME= LIBNAME Option" on page 86

DBPROMPT="DBPROMPT= LIBNAME Option" on page 87

DBSASLABEL="DBSASLABEL= COMPAT | NONE | DBMS "on page 87

DEFER="DEFER= LIBNAME Option" on page 88

DIRECT\_SQL="DIRECT\_SQL= LIBNAME Option" on page 88

MULTI\_DATASRC\_OPT="MULTI\_DATASRC\_OPT= LIBNAME Option" on page 88

REREAD\_EXPOSURE="REREAD\_EXPOSURE= LIBNAME Option" on page 89

SPOOL="SPOOL= LIBNAME Option" on page 89

---

## CONNECTION= LIBNAME Option

Specifies whether operations against a single libref share a connection to the DBMS, and whether operations against multiple librefs share a connection to the DBMS

Valid in: SAS/ACCESS LIBNAME statement

DBMS support: DB2 OS/390, DB2 UNIX/PC, Informix, ODBC, OLE DB, Oracle, Microsoft SQL Server, SYBASE, Teradata, SAP

Default value: DBMS-specific. The default value for SAP is SHAREDREAD

---

### Syntax

CONNECTION= SHAREDREAD | UNIQUE | GLOBALREAD |

For more information about the CONNECTION= option, see the LIBNAME statement for relational databases in the *SAS/ACCESS 9.1 for Relational Databases: Reference*.

---

## CONNECTION\_GROUP= LIBNAME Option

Causes operations against multiple librefs to share a connection to the DBMS. Also causes operations against multiple pass-through facility CONNECT statements to share a connection to the DBMS

Valid in: SAS/ACCESS LIBNAME statement

DBMS support: DB2 OS/390, DB2 UNIX/PC, Informix, ODBC, OLE DB, Oracle, Microsoft SQL Server, SYBASE, Teradata

Default value: none

---

### Syntax

CONNECTION\_GROUP= *connection-group-name*

For more information about the CONNECTION\_GROUP= option, see the LIBNAME statement for relational databases in the *SAS/ACCESS 9.1 for Relational Databases: Reference*.

---

## DBGEN\_NAME= LIBNAME Option

Specifies whether to automatically rename DBMS columns containing characters that SAS does not allow, such as \$, to valid SAS variable names

Valid in: SAS/ACCESS LIBNAME statement

DBMS support: DB2 OS/390, DB2 UNIX/PC, Informix, ODBC, OLE DB, Oracle, Microsoft SQL Server, SYBASE, Teradata

Default value: DBMS

---

## Syntax

**DBGEN\_NAME=** DBMS | SAS

For more information about the DBGEN\_NAME= option, see the LIBNAME statement for relational databases in the *SAS/ACCESS 9.1 for Relational Databases: Reference*.

---

## DBPROMPT= LIBNAME Option

**Specifies whether SAS displays a window that prompts the user to enter DBMS connection information prior to connecting to the DBMS in interactive mode**

Valid in: SAS/ACCESS LIBNAME statement

**DBMS support:** DB2 UNIX/PC, Informix, ODBC, Oracle, Microsoft SQL Server, SYBASE, Teradata

Default value: NO

---

## Syntax

**DBPROMPT=**YES | NO

For more information about the DBPROMPT= option, see the LIBNAME statement for relational databases in the *SAS/ACCESS 9.1 for Relational Databases: Reference*.

---

## DBSASLABEL= COMPAT | NONE | DBMS

**Indicates to the engine what column labels the application expects to be returned**

Valid in: SAS/ACCESS LIBNAME statement for SAP

Default value: COMPAT

---

## Syntax

**DBSASLABEL=** COMPAT | NONE

COMPAT	specifies that the column labels are compatible with the engine's behavior in previous SAS releases. The SAP engine returns the short descriptive text for the columns of the SAP table. It reads the column label from the SAP data dictionary. This is the default value.
NONE	specifies that no column label information is returned.

For more information about the DBPROMPT= option, see the LIBNAME statement for relational databases in the *SAS/ACCESS 9.1 for Relational Databases: Reference*.

---

## DEFER= LIBNAME Option

**Specifies when the connection to the DBMS occurs**

**Valid in:** SAS/ACCESS LIBNAME statement

**DBMS support:** DB2 OS/390, DB2 UNIX/PC, Informix, ODBC, OLE DB, Oracle, Microsoft SQL Server, SYBASE, Teradata

**Default value:** NO

---

### Syntax

**DEFER=** NO | YES

For more information about the DEFER= option, see the LIBNAME statement for relational databases in the *SAS/ACCESS 9.1 for Relational Databases: Reference*.

---

## DIRECT\_SQL= LIBNAME Option

**Enables you to specify whether generated SQL is passed to the DBMS for processing**

**Valid in:** SAS/ACCESS LIBNAME statement

**DBMS support:** DB2 OS/390, DB2 UNIX/PC, Informix, ODBC, OLE DB, Oracle, Microsoft SQL Server, SYBASE, Teradata

**Default value:** YES

---

### Syntax

**DIRECT\_SQL=** YES | NO | NONE | NOGENSQL | NOWHERE | NOFUNCTIONS  
| NOMULTOUTJOINS

For more information about the DIRECT\_SQL= option, see the LIBNAME statement for relational databases in the *SAS/ACCESS 9.1 for Relational Databases: Reference*.

---

## MULTI\_DATASRC\_OPT= LIBNAME Option

**Used in place of DBKEY to improve performance when processing a join between two data sources**

**Valid in:** SAS/ACCESS LIBNAME statement

**DBMS support:** DB2 OS/390, DB2 UNIX/PC, Informix, ODBC, OLE DB, Oracle, Microsoft SQL Server, SYBASE, Teradata

**Default value:** NONE

---

## Syntax

**MULTI\_DATASRC\_OPT=NONE** | IN\_CLAUSE

For more information about the MULTI\_DATASRC\_OPT= option, see the LIBNAME statement for relational databases in the *SAS/ACCESS 9.1 for Relational Databases: Reference*.

---

## REREAD\_EXPOSURE= LIBNAME Option

**Specifies whether the SAS/ACCESS engine behaves like a random access engine for the scope of the LIBNAME statement**

**Valid in:** SAS/ACCESS LIBNAME statement

**DBMS support:** DB2 OS/390, DB2 UNIX/PC, Informix, ODBC, OLE DB, Oracle, Microsoft SQL Server, SYBASE, Teradata

**Default value:** NO

---

## Syntax

**REREAD\_EXPOSURE= NO** | YES

For more information about the REREAD\_EXPOSURE= option, see the LIBNAME statement for relational databases in the *SAS/ACCESS 9.1 for Relational Databases: Reference*.

---

## SPOOL= LIBNAME Option

**Specifies whether SAS creates a utility spool file during read transactions that read data more than once**

**Valid in:** SAS/ACCESS LIBNAME statement

**DBMS support:** DB2 OS/390, DB2 UNIX/PC, Informix, ODBC, OLE DB, Oracle, Microsoft SQL Server, SYBASE, Teradata

**Default value:** YES

---

## Syntax

**SPOOL= YES** | NO

For more information about the SPOOL= option, see the LIBNAME statement for relational databases in the *SAS/ACCESS 9.1 for Relational Databases: Reference*.

---

## SAS Data Set Options for the SAP Engine

The following list describes the SAP interface support for SAS /ACCESS data set options and presents default values where applicable. For further information, refer to the *SAS/ACCESS 9.1 for Relational Databases: Reference*

BATCH="BATCH= 0|1|Y|N "on page 90

DBCONDITION="DBCONDITION= Data Set Option" on page 90

DBGEN\_NAME="DBGEN\_NAME= Data Set Option" on page 91

DBKEY="DBKEY= Data Set Option" on page 91

DBMASTER="DBMASTER= Data Set Option" on page 92

NULLCHAR="NULLCHAR= Data Set Option" on page 92

NULLCHARVAL="NULLCHARVAL= Data Set Option" on page 92

REREAD\_EXPOSURE="REREAD\_EXPOSURE= Data Set Option" on page 93

---

### BATCH= 0|1|Y|N

Indicates whether the RFC server should use SAP batch jobs for the data extracts

Valid in: SAS/ACCESS LIBNAME statement for SAP

Default value: N

---

#### Syntax

BATCH | BATCH\_MODE | BATCHMODE = 0|1|Y|N

#### Y

RFC uses batch jobs to extract R/3 data.

#### N

RFC uses dialog processes to extract R/3 data.

Indicates whether the RFC server should use SAP batch jobs for the data extracts. The default value for this option is N.

*Note:* The BATCH= option is SAP specific.  $\Delta$

---

### DBCONDITION= Data Set Option

Specifies criteria for subsetting and ordering DBMS data

Valid in: DATA and PROC steps (when accessing DBMS data using SAS/ACCESS software)

DBMS support: DB2 OS/390, DB2 UNIX/PC, Informix, ODBC, OLE DB, Oracle, Microsoft SQL Server, SYBASE, Teradata



**Default value:** none

---

## Syntax

**DBCONDITION=**"DBMS-SQL-query-clause"

For more information about the DBCONDITION= option, see the data set options for relational databases section in the *SAS/ACCESS 9.1 for Relational Databases: Reference*.

---

## DBGEN\_NAME= Data Set Option

**Specifies whether to rename columns automatically when they contain characters that SAS does not allow**

**Valid in:** DATA and PROC steps (when accessing DBMS data using SAS/ACCESS software)

**DBMS support:** DB2 OS/390, DB2 UNIX/PC, Informix, ODBC, OLE DB, Oracle, Microsoft SQL Server, SYBASE, Teradata

**Default value:** DBMS

---

## Syntax

**DBGEN\_NAME=**DBMS | SAS

For more information about the DBGEN\_NAME= option, see the data set options for relational databases section in the *SAS/ACCESS 9.1 for Relational Databases: Reference*.

---

## DBKEY= Data Set Option

**Can improve performance when processing a join that involves a large DBMS table and a small SAS data set or DBMS table (by specifying a key column to optimize DBMS retrieval)**

**Valid in:** DATA and PROC steps (when accessing DBMS data using SAS/ACCESS software)

**DBMS support:** DB2 OS/390, DB2 UNIX/PC, Informix, ODBC, OLE DB, Oracle, Microsoft SQL Server, SYBASE, Teradata

**Default value:** none

---

## Syntax

**DBKEY=**(<'>column-1<'> <... <'>column-n<'>>)

For more information about the DBKEY= option, see the data set options for relational databases section in the *SAS/ACCESS 9.1 for Relational Databases: Reference*.

---

## DBMASTER= Data Set Option

Used to designate which table is the larger table when you are processing a join that involves tables from two different types of databases

**Valid in:** DATA and PROC steps (when accessing DBMS data using SAS/ACCESS software)

**DBMS support:** DB2 OS/390, DB2 UNIX/PC, Informix, ODBC, OLE DB, Oracle, Microsoft SQL Server, SYBASE, Teradata

**Default value:** none

---

### Syntax

**DBMASTER=***YES*

For more information about the DBMASTER= option, see the data set options for relational databases section in the *SAS/ACCESS 9.1 for Relational Databases: Reference*.

---

## NULLCHAR= Data Set Option

Indicates how SAS character missing values are handled during insert, update, DBINDEX=, and DBKEY= processing

**Valid in:** DATA and PROC steps (when accessing DBMS data using SAS/ACCESS software)

**DBMS support:** DB2 OS/390, DB2 UNIX/PC, Informix, ODBC, OLE DB, Oracle, Microsoft SQL Server, SYBASE, Teradata

**Default value:** SAS

---

### Syntax

**NULLCHAR=** SAS | YES | NO

For more information about the NULLCHAR= option, see the data set options for relational databases section in the *SAS/ACCESS 9.1 for Relational Databases: Reference*.

---

## NULLCHARVAL= Data Set Option

Defines the character string that replaces SAS character missing values during insert, update, DBINDEX=, and DBKEY= processing

**Valid in:** DATA and PROC steps (when accessing DBMS data using SAS/ACCESS software)

**DBMS support:** DB2 OS/390, DB2 UNIX/PC, Informix, ODBC, OLE DB, Oracle, Microsoft SQL Server, SYBASE, Teradata

**Default value:** a blank character

---

## Syntax

**NULLCHARVAL=**'character-string'

For more information about the NULLCHARVAL= option, see the data set options for relational databases section in the *SAS/ACCESS 9.1 for Relational Databases: Reference*.

---

## REREAD\_EXPOSURE= Data Set Option

**Specifies whether the SAS/ACCESS engine behaves like a random access engine for the scope of the LIBNAME statement**

**Valid in:** SAS/ACCESS LIBNAME statement

**DBMS support:** DB2 OS/390, DB2 UNIX/PC, Informix, ODBC, OLE DB, Oracle, Microsoft SQL Server, SYBASE, Teradata

**Default value:** NO

---

## Syntax

**REREAD\_EXPOSURE=** NO | YES

For more information about the REREAD\_EXPOSURE= option, see the LIBNAME statement for relational databases section in the *SAS/ACCESS 9.1 for Relational Databases: Reference*.

---

## Examples

---

### Example 1 — Accessing the SAP Server From a Local Host

In this example, the RFC server has been started on the local host on port 6998. You want to access the SAP system on `sapr3srv.sup.com`. The system number for the system is 03. You specify the entire set of user information, for example, client, user, password, and language.

```
libname mylib r3 user=TEST password=MYPASS client=800 language=EN
      ashost=sapr3srv.sup.com sysnr=03
      host=localhost port=6998;
```

*Note:* If the RFC server has been started on the SAS system host on port 6999, you do not need to define the host or port because 6999 is the default.  $\Delta$

---

## Example 2 — Changing the User Logon Language

In this example, the RFC server has been started on betaguys on port 6994. You want to access the BW system on whjapp01 and the system number is 06. This time you want to log on using the German language. If you log on using that language, the column labels will all be in German.

```
libname bwides r3 user=Test password=pwd client=800 language=DE
    ahost=whjapp01 sysnr=06
    host=betaguys port=6994;
```

---

## Example 3 — Defining an SAP Destination from the SAP Logon Utility

In this example, the RFC server is running on the local host on port 6999. This is the default. The SAP system you want to access is defined as SI9 in the SAP logon utility.

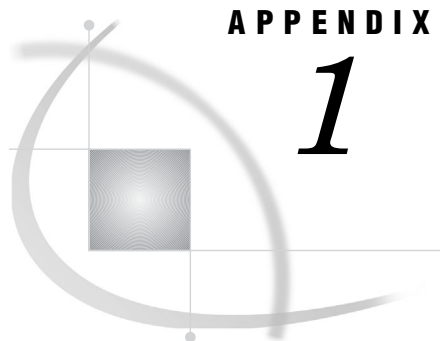
```
libname mylib r3 user=test password=secret client=800 language=E
    saplogon_id=SI9;
```

---

## Example 4 — Defining an SAP Destination from the saprfc.ini File

In this example, the RFC server is running on the local host on port 6999. This is the default. The SAP system you want to access is defined by the logical destination bwides in the file saprfc.ini.

```
libname mylib r3 user=test password=secret client=800 language=EN
    destination=bwides;
```



## APPENDIX

## 1

## Recommended Reading

---

*Recommended Reading* 95

---

### Recommended Reading

Here is the recommended reading list for this title:

- Doing More with SAS/ASSIST*
- Getting Started with the SAS System*
- SAS/AF Procedure Guide*
- SAS/FSP Procedures Guide*
- SAS Language Reference: Concepts*
- SAS Language Reference: Dictionary*
- SAS Macro Language: Reference*
- SAS/Warehouse Administrator Metadata API Reference*
- SAS/Warehouse Administrator User's Guide*
- Step-by-Step Programming with Base SAS Software*
- Getting Started with SAS/ASSIST*
- SAS® Companion that is specific to your operating environment.

For a complete list of SAS publications, see the current *SAS Publishing Catalog*. To order the most current publications or to receive a free copy of the catalog, contact a SAS representative at

SAS Publishing Sales  
SAS Campus Drive  
Cary, NC 27513  
Telephone: (800) 727-3228\*  
Fax: (919) 677-8166  
E-mail: [sasbook@sas.com](mailto:sasbook@sas.com)

Web address: [support.sas.com/pubs](http://support.sas.com/pubs)

\* For other SAS Institute business, call (919) 677-8000.

Customers outside the United States should contact their local SAS office.



# Glossary

---

**ABAP**

Advanced Business Applications Programming. ABAP is a fourth-generation programming language that is used for developing SAP R/3 client/server applications.

**Communications Interface**

an interface through which various types of R/3 communication can occur. R/3 communicates with all systems that comply with Open Systems architecture. The Communications Interface enables users to work transparently with data from any one of several database management systems in any one of several operating environments. The Communications Interface also enables users to run R/3 in multiple operating environments.

**CPI-C**

Common Programming Interface-Communications. An application-level interface for direct program-to-program communication. CPI-C is not used in 9.1 and later versions of the SAS/ACCESS Interface to R/3.

**data dictionary**

in R/3 applications, a central repository that stores metadata about the data sources, such as a database that contains information about company expenses and company profits or a database that contains human resources information. The data dictionary also stores information about the applications that use the data sources.

**data model**

a collection of data that is relevant to a particular facet of a specific business, such as finance or materials management. A data model can contain other data models. A data model is used to organize potentially complex relationships between entity types and other data models.

**DATA step**

a group of statements in a SAS program that begins with a DATA statement and ends with either a RUN statement, another DATA statement, a PROC statement, the end of the job, or the semicolon that immediately follows lines of data. The DATA step enables you to read raw data or other SAS data sets and to use programming logic to create a SAS data set, to write a report, or to write to an external file.

**Database Interface**

in SAP R/3, a logical application layer that is used to transport data between one or more physical databases and the R/3 applications. The R/3 Database Interface

translates R/3 SQL statements into pure SQL statements and enables R/3 to access data that is in other database formats.

**entity**

in SAP R/3 applications, an abstract or physical object, such as "Mr. Brown" or "Division Management Subsystem" that represents the smallest collection of data that has meaning within a business. An entity is categorized according to its entity type properties. See also entity type.

**entity type**

in R/3 applications, a category of entities that have the same definable characteristics. The definable characteristics are called attributes. Multiple entity types can be grouped into a single table. See also entity.

**ERP (Enterprise Resource Planning) system**

an integrated application that controls day-to-day business operations such as inventory, sales, finance, human resources, and distribution. From the warehousing perspective, ERP systems differ from standard databases in that they have predefined data models that must be understood in order to successfully extract the data.

**format**

a pattern that SAS uses to determine how the values of a variable should be written or displayed. SAS provides a set of standard formats and also enables you to define your own formats.

**library reference**

See libref.

**libref**

a name that is temporarily associated with a SAS data library. For example, in the name SASUSER.ACCOUNTS, the name SASUSER is the libref. You assign a libref with a LIBNAME statement or with an operating system's command.

**observation**

a row in a SAS data set. All of the data values in an observation are associated with a single entity such as a customer or a state. Each observation contains one data value for each variable.

**ODD**

an operational data definition. A metadata record that provides access to a data source. ODDs are used for loading data into data stores in your warehouse.

**PROC step**

a group of SAS statements that call and execute a procedure. A PROC step usually takes a SAS data set as input.

**R/3**

an enterprise resource planning (ERP) system that has been developed by SAP AG for use in client/server environments.

**RFC**

Remote Function Call. The RFC is the SAP AG implementation of a remote procedure call. RFCs enable external applications such as SAS and R/3 systems to access SAP BW and R/3 systems.

**SAS data library**

a collection of one or more SAS files that are recognized by SAS and that are referenced and stored as a unit. Each file is a member of the library.

**SAS data set**

a file whose contents are in one of the native SAS file formats. There are two types of SAS data sets: SAS data files and SAS data views. SAS data files contain data



values in addition to descriptor information that is associated with the data. SAS data views contain only the descriptor information plus other information that is required for retrieving data values from other SAS data sets or from files whose contents are in other software vendors' file formats.

**sideinfo file**

a text file that can be used to set logon parameters, such as RFC host, system number, gateway service, and gateway host, for R/3 users.

**variable**

a column in a SAS data set. Each column contains data values that describe a single characteristic for all observations.

**view**

a definition of a virtual data set. The definition is named and stored for later use. A view contains no data; it merely describes or defines data that is stored elsewhere.



# Index

## A

- ABAP Function module 12
  - name specification 77
- ABAP program name
  - RFC server 77
- ABAP Report module 12
- ABAP type NUMC
  - SAS type for 82
- ABAP Where Expression Builder window 46
- ABAPFM= option
  - LIBNAME statement for SAP 77
- ABAPPROG= option
  - LIBNAME statement for SAP 77
- Advanced Parameters window 19
  - General tab 20
  - RFC tab 21
  - sideinfo file 22
  - TCP/IP tab 20
- All Entity Types tab 27
- Application Setup window 22
  - Data Dictionary tab 24
  - Defaults tab 23
  - Miscellaneous tab 24
- ASHOST= option
  - LIBNAME statement for SAP 77
- Assigned Tables tab 28
- Attributes for a Table (Edit) window 42
  - Fields tab 44
  - General Attributes tab 43
  - Related Tables tab 44
  - Select Fields for a Table window 45
  - Where tab 44
- Attributes tab 28

## B

- BAPI connection parameters 73
- BATCH= data set option 90
- batch jobs
  - data extracts 78, 90
- batch mode
  - RFC server in 61
- batch operations 53
  - passwords 54
  - source parameter 54
- BATCH= option
  - LIBNAME statement for SAP 78

## C

- %CALLRFC macro 62
- catalog entries 39
- CLIENT= option
  - LIBNAME statement for SAP 78
- code page 80
- connecting to R/3 systems 68
- CONNECTION= option
  - LIBNAME statement for SAP 86
- connection parameters 71
- CONNECTION\_GROUP= option
  - LIBNAME statement for SAP 86
- Connections menu
  - Datamodel Explorer window 33
  - Ligon to R/3 window 19
- Create Extract Programs window 40

## D

- data access methods 11
  - direct access 11
  - extract management method 12, 13
  - ODBC 11
  - parameters for 22
  - R/3 11
  - Remote Function Call (RFC) 12
- data dictionary
  - local copy of 24
  - location of 24
  - search facility 51
- Data Dictionary Search Facility window 51
  - Options tab 52
  - Search String tab 52
- Data Dictionary tab 24
- data extracts
  - batch mode 78, 90
- data set options
  - SAP engine 90
- data sets
  - creating or selecting 39
- Datamodel Explorer 25
  - ABAP Where Expression Builder window 46
  - Attributes for a Table (Edit) window 42
  - Create Extract Programs window 40
  - Enter Catalog Entry Name window 39
  - Enter Dataset Name window 39
  - General Attributes for a List of Tables window 35

- List of Connections window 33
  - starting 25
- Datamodel Explorer window 25
  - All Entity Types tab 27
  - Assigned Tables tab 28
  - Attributes tab 28
    - menus 29
    - Sub Data Models tab 26
  - DBCONDITION= data set option 91
  - DBGEN\_NAME= data set option 91
  - DBGEN\_NAME= option
    - LIBNAME statement for SAP 87
  - DBKEY= data set option 91
  - DBMASTER= data set option 92
  - DBMS columns
    - labels 87
    - renaming 87, 91
  - DBMS connections
    - prompts for 87
    - timing of 88
  - DBMS data
    - subsetting and ordering 91
  - DBPROMPT= option
    - LIBNAME statement for SAP 87
  - DBSASLABEL= option
    - LIBNAME statement for SAP 87
  - Defaults tab 23
  - DEFER= option
    - LIBNAME statement for SAP 88
  - descriptor library 23
  - descriptors
    - creating 32
    - for list of tables 35
    - list of 48
  - DESTINATION= option
    - LIBNAME statement for SAP 78
  - direct access method 11
  - DIRECT\_SQL= option
    - LIBNAME statement for SAP 88
  - disconnecting from R/3 systems 70

## E

- Enter Catalog Entry Name window 39
- Enter Dataset Name window 39
- entity types
  - Assigned Tables tab 28
  - attributes of 28
  - for data models 27, 28

Export Metadata to SAS/Warehouse Administrator window 49

Export Metadata window 48

exporting metadata

- parameters for 48
- to SAS/Warehouse Administrator 7, 49

extract management method 12, 13

- data transfer and use 13
- installation and setup 13

extract programs

- creating 40

**F**

Fields tab 44

File menu

- Datamodel Explorer window 30
- Logon to R/3 window 18

floating point numbers 80

functions

- calling R/3 function modules 62
- for logon 22

**G**

General Attributes for a List of Tables window 35

General Attributes tab 43

General tab

- Advanced Parameters window 20
- List of Connections window 34

generated SQL

- passing to DBMS 88

GROUP= option

- LIBNAME statement for SAP 79

GWHOST= option

- LIBNAME statement for SAP 79

GWSERV= option

- LIBNAME statement for SAP 79

**H**

HOST= option

- LIBNAME statement for SAP 80

**I**

IEEE\_REVERSE= option

- LIBNAME statement for SAP 80

INENCODING= option

- LIBNAME statement for SAP 80

**J**

joins

- number of tables 81
- performance and 89, 91
- table size 92

**L**

LANGUAGE= option

- LIBNAME statement for SAP 81

LIBNAME statement for SAP 75

- engine options 76
- examples 93
- LIBNAME options 85
- overview 75
- syntax 75

List of Connections window 33

- General tab 34
- More RFC tab 35
- RFC tab 34
- TCP/IP tab 35

List of Descriptors 48

- Export Metadata to SAS/Warehouse Administrator window 49
- Export Metadata window 48
- List of R/3 Descriptors window 48

List of R/3 Descriptors window 48

List of R/3 Tables 47

List of R/3 Tables window 47

local setup utility 22

- Application Setup window 22

logging on 4

logon parameter client 78

logon parameters 22

Logon to R/3 window 16

- Connections menu 19
- File menu 18
- logging on 4

logon utility 16

- Advanced Parameters window 19
- Logon to R/3 window 16

**M**

macro variables 62

- RFC\_LOGON\_INFO 71

macros 62

- %CALLRFC 62
- %R3CONN 67
- %R3CONN 68
- %R3CONN 70

MAX\_TABLE\_JOINS= option

- LIBNAME statement for SAP 81

menus

- Datamodel Explorer window 29
- Logon to R/3 window 18, 19

message server

- host name 81

metadata

- exporting to SAS/Warehouse Administrator 7, 49
- parameters for exporting 48
- searching 5, 51
- storage type for 23

MHOST= option

- LIBNAME statement for SAP 81

Miscellaneous tab 24

missing values 92, 93

More RFC tab 35

MULTI\_DATASRC\_OPT= option

- LIBNAME statement for SAP 89

**N**

NULLCHAR= data set option 92

NULLCHARVAL= data set option 93

NUMC\_SAS\_TYPE= option

- LIBNAME statement for SAP 82

**O**

observations

- number to display 24

ODBC (Open Data Base Connectivity) 11

Options tab 52

ordering DBMS data 91

**P**

PASSWORD= option

- LIBNAME statement for SAP 82

passwords

- for batch operations 54
- SAP logon parameter 82
- SAP logon parameter, encrypted form 82

PASSWORDX= option

- LIBNAME statement for SAP 82

PORT= option

- LIBNAME statement for SAP 83

profiles 16

- connecting/disconnecting with 67
- creating 5
- displaying 33
- predefined 4
- text descriptions of 20
- text labels for 17

**Q**

queries

- creating in ABAP syntax 46
- of extracted rows 44
- parameters for 52

**R**

R/3 3, 16

- accessing data with 11
- connecting to R/3 systems 68
- disconnecting from R/3 systems 70
- getting started 3
- starting 3
- system name 83
- system number 22, 84

R/3 BAPI Connector: Logon window 73

%R3CONN macro 67

%R3CONN macro 68

%R3CONN macro 70

R3NAME= option

- LIBNAME statement for SAP 83

random access engine

- SAS/ACCESS engine as 89

read transactions

- utility spool file 89

Related Tables tab 44  
 Remote Function Call (RFC) 12  
 remote SAS sessions 20  
 REREAD\_EXPOSURE= data set option 93  
 REREAD\_EXPOSURE= option  
     LIBNAME statement for SAP 89  
 RFC (Remote Function Call) 12  
 RFC server 57  
     ABAP Function module name 77  
     ABAP function modules and programs 58  
     ABAP program name 77  
     batch jobs for data extracts 90  
     batch mode 61  
     host for connecting to SAP 80  
     macros and macro variables 62  
     network location of 21  
     port number 83  
     R/3 BAPI Connector: Logon window 73  
     tracing requests 85  
     UNIX 58  
     Windows NT 60  
 RFC tab  
     Advanced Parameters window 21  
     List of Connections window 34  
 RFC\_LOGON\_INFO macro variable 71  
 RfcOpenEx() call  
     additional logon or connection parameters 83  
 RFC\_STRING= option  
     LIBNAME statement for SAP 83

## S

SAP application servers  
     host name or IP address 77  
     name of the group of 79  
 SAP destination  
     defining from SAP logon utility 94  
     defining from saprfc.ini file 94  
 SAP engine  
     data set options 90  
 SAP gateway  
     host name of 79  
     service of 79  
 SAP LIBNAME Engine 76  
 SAP logon parameter  
     language for 81  
     password 82  
     password, encrypted form 82  
     user name 85  
 SAP logon parameter client 78  
 SAP logon utility  
     defining SAP destination from 94  
 SAP server  
     accessing from local host 93  
 SAP transport files 58  
 SAPLOGON  
     string defined for 84  
 SAPLOGON\_ID= option  
     LIBNAME statement for SAP 84  
 saprfc.ini file  
     defining SAP destination from 94  
     destination indication 78  
 SAS/ACCESS engine  
     as random access engine 89, 93  
 SAS/ACCESS Interface to R/3  
     *See* R/3  
 SAS libraries 23  
     local copy of data dictionary 24  
     location of data dictionary 24  
 SAS/Warehouse Administrator  
     exporting metadata to 7, 49  
 Search Metadata utility 51  
     Data Dictionary Search Facility window 51  
 Search String tab 52  
 searching metadata 5, 51  
 Select Fields for a Table window 45  
 setup  
     Application Setup window 22  
     local setup utility 22  
 sideinfo files 22  
 source entry 35  
 source library 23  
 source parameter 54  
 SPOOL= option  
     LIBNAME statement for SAP 89  
 Sub Data Models tab 26  
 subsetting DBMS data 91  
 SYSNR= option  
     LIBNAME statement for SAP 84  
 system number 22

## T

tables  
     Assigned Tables tab 28  
     attributes for 35, 42  
     fields 44, 45  
     list of 47  
     querying extracted rows 44  
     related tables 44  
 TCP/IP tab  
     Advanced Parameters window 20  
     List of Connections window 35  
 Tools menu 32  
 TRACE= option  
     LIBNAME statement for SAP 85  
 transport files 58  
 tutorial 3

## U

UNIX  
     RFC server on 58  
 user logon language  
     changing 94  
 USER= option  
     LIBNAME statement for SAP 85  
 utility spool file  
     for read transactions 89

## V

View menu 31  
 views  
     creating 32  
     default settings 23  
     for list of tables 35

## W

where expressions  
     creating in ABAP syntax 46  
 Where tab 44  
 Windows NT  
     RFC server on 60



# Your Turn

---

If you have comments or suggestions about *SAS/ACCESS® 9.1 Interface to R/3: User's Guide*, please send them to us on a photocopy of this page, or send us electronic mail.

For comments about this book, please return the photocopy to

SAS Publishing  
SAS Campus Drive  
Cary, NC 27513  
E-mail: [yourturn@sas.com](mailto:yourturn@sas.com)

For suggestions about the software, please return the photocopy to

SAS Institute Inc.  
Technical Support Division  
SAS Campus Drive  
Cary, NC 27513  
E-mail: [suggest@sas.com](mailto:suggest@sas.com)

