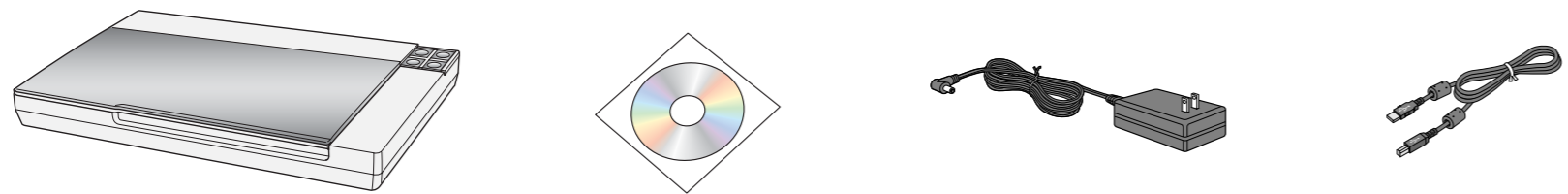


Start Here

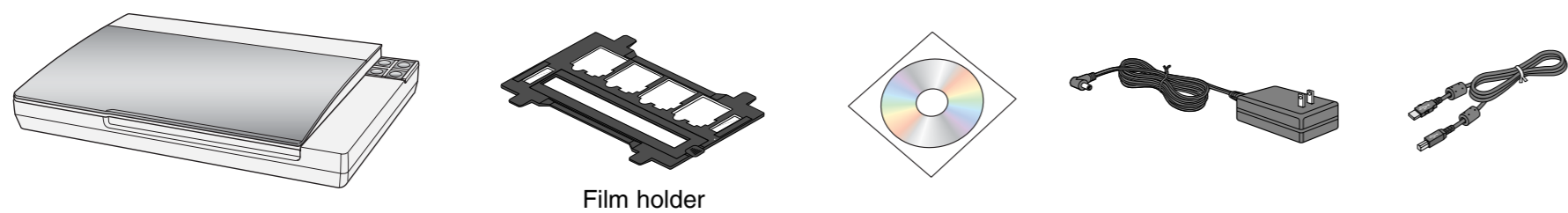
EPSON PERFECTION™ V10/V100 PHOTO/V350 PHOTO

1 Unpack

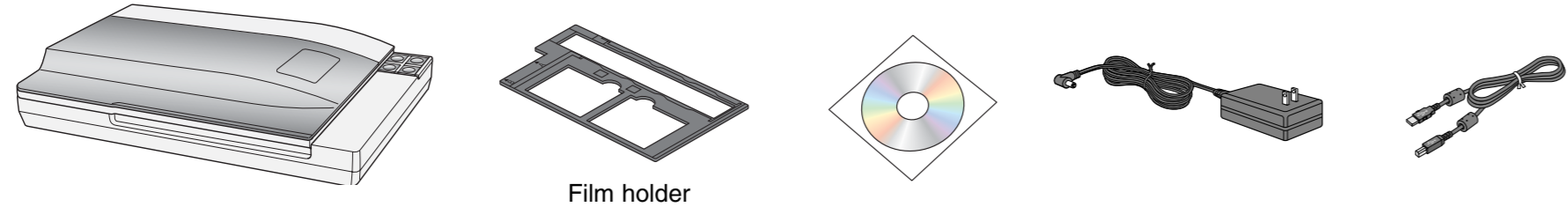
Perfection V10



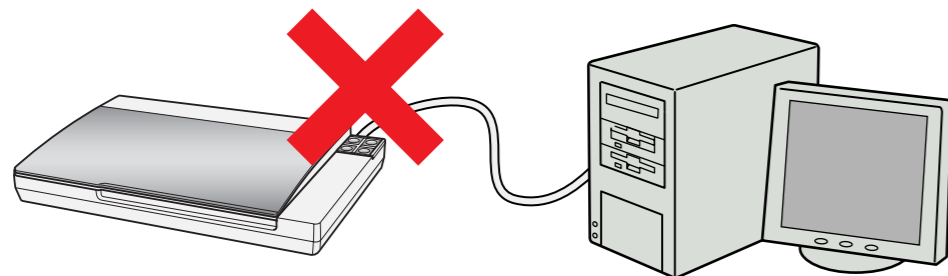
Perfection V100 Photo



Perfection V350 Photo

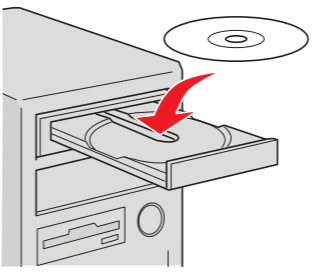


2 Install Software



Do not connect the USB cable yet.

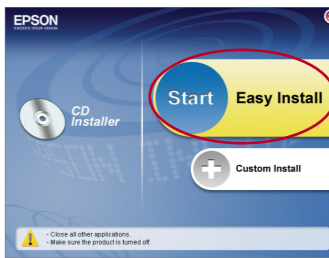
- 1
- 2
- 3
- 4



Macintosh OS X: Double-click the CD-ROM icon on the desktop.

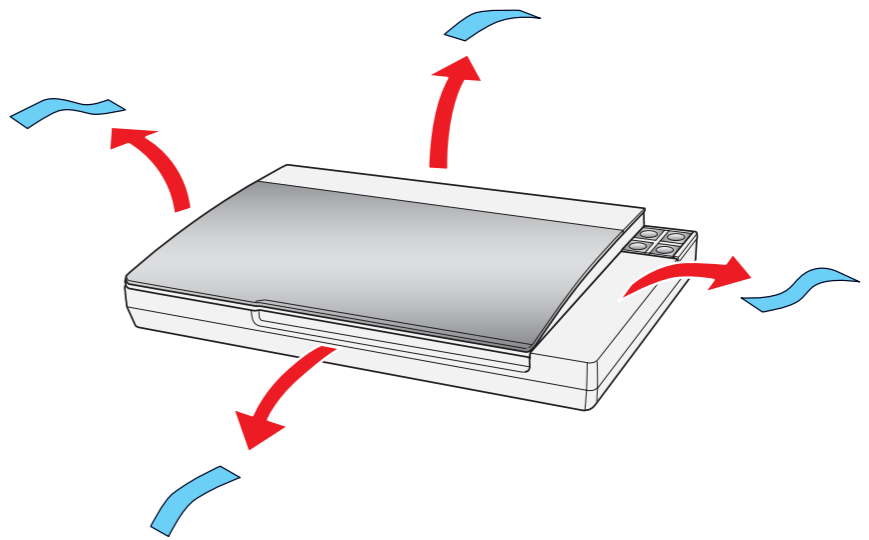


Select your scanner.

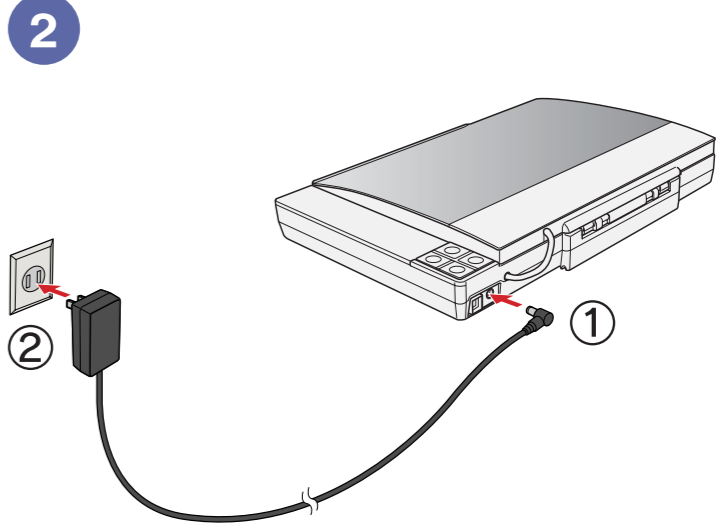
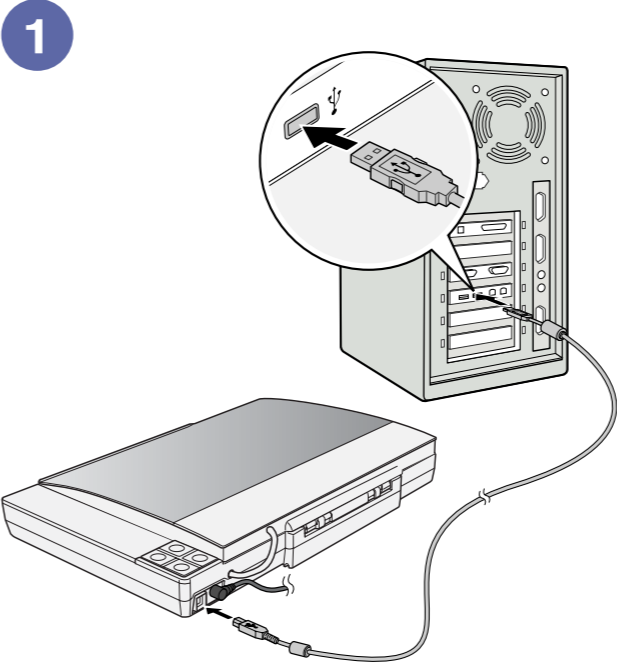


Follow the on-screen instructions and select the default options.

3 Remove Protective Tape



4 Connect and plug in



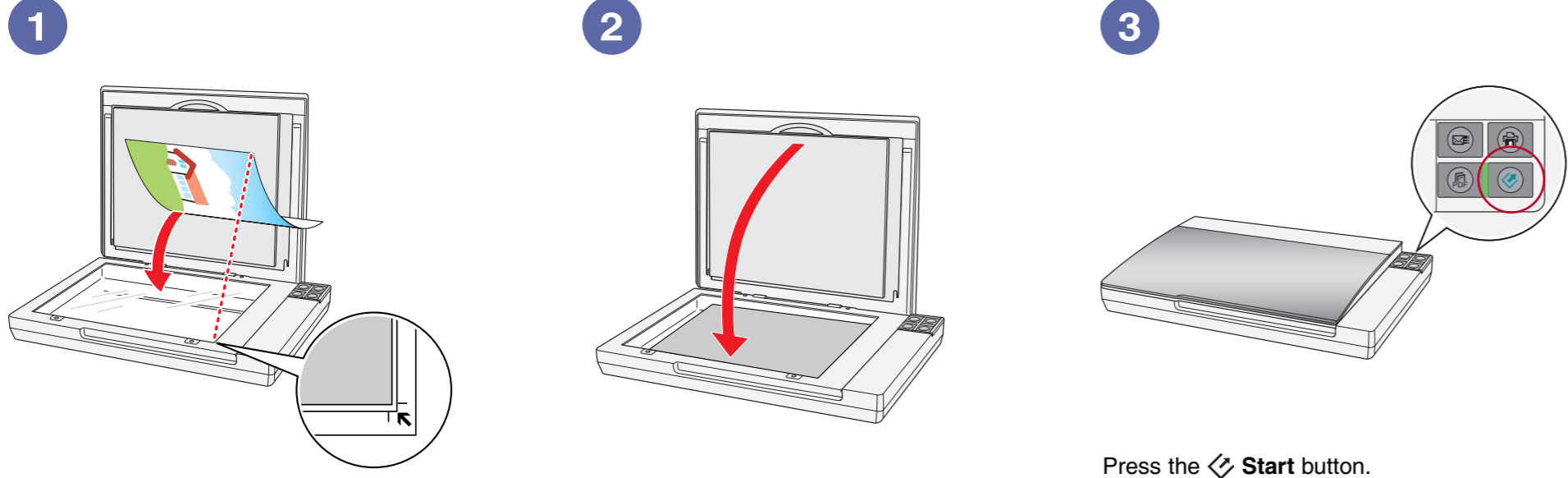
Plug the AC adapter into an electrical outlet to turn the scanner on.



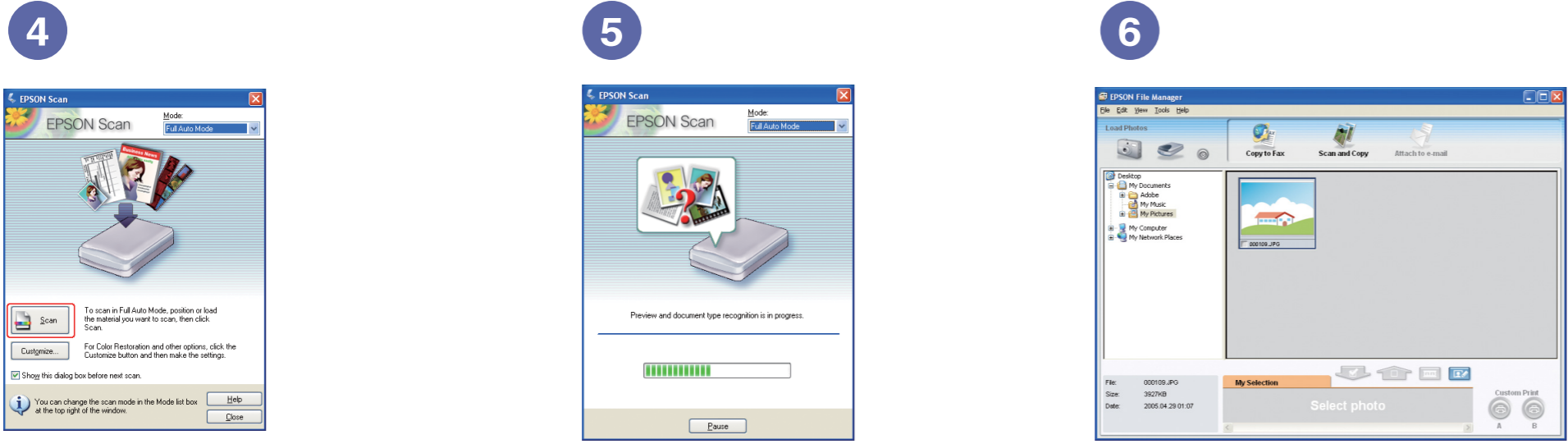
Printed in XXXXXX XX.XX-XX XXX

410526500

5 Try scanning a photo



Press the **Start** button.



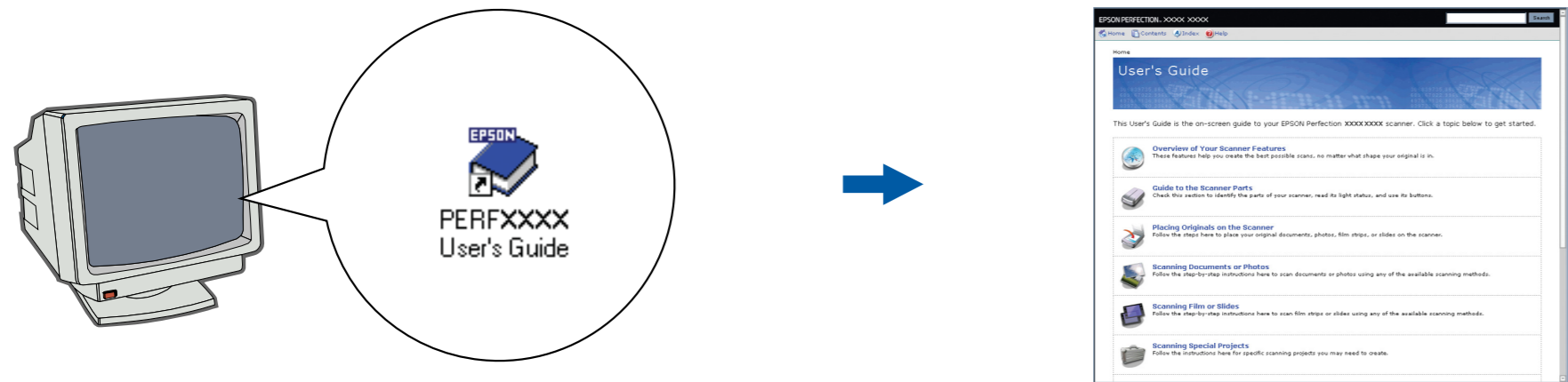
Click **Scan**.

EPSON Scan opens and scans your photo in **Full Auto Mode**. Wait for your scan to finish or click **Pause** to change settings.

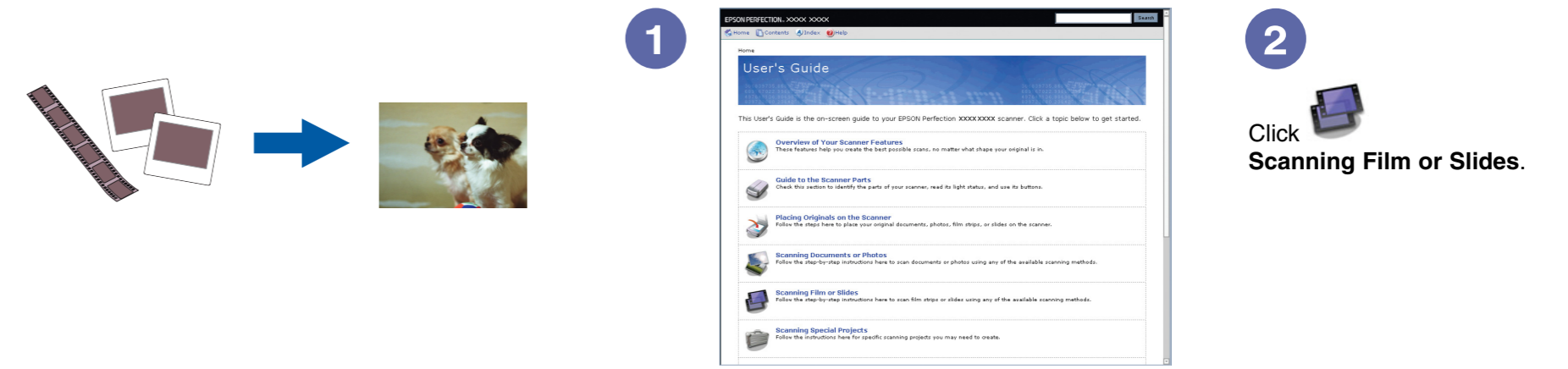
EPSON File Manager opens and displays your scanned photo.
View the on-screen *User's Guide* for instructions on using EPSON File Manager.

Do more

View the on-screen *User's Guide* for instructions on using these features:



Scan film or slides (Perfection V100 Photo and V350 Photo)



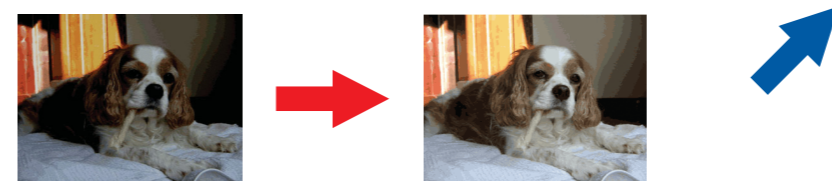
Restore color



Remove dust from originals

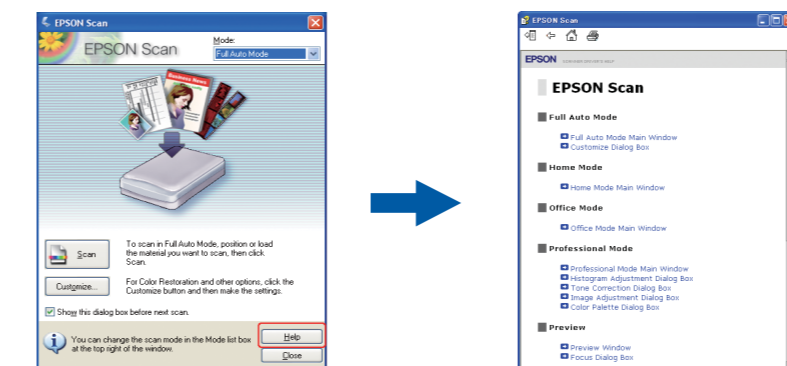


Fix photos that are too dark because of backlighting

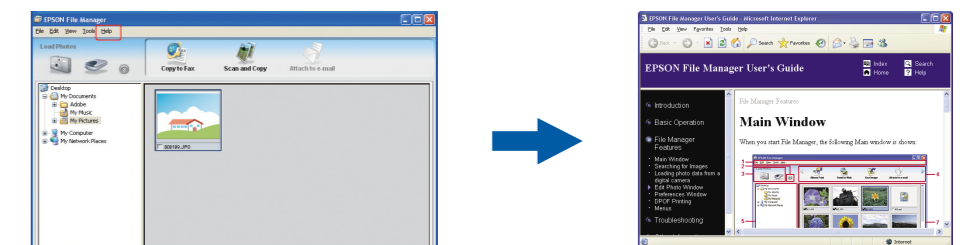


Help

EPSON Scan



EPSON File Manager



Open the **Help** menu and select **EPSON File Manager User's Guide**.