



## **Guitars & Accessories** *Pages 2 - 40*

From electric to acoustic, Chord provides an extensive range of professional quality guitars to suit all genres, as well as a wide selection of guitar accessories to complement your instrument.



## **Harmonicas** *Pages 41*

Professional chromatic and diatonic blues harmonicas in all keys for accompaniment to blues, rock or folk music.



## **Percussion** *Pages 42 - 52*

A vast selection of percussion instruments from the traditional to the exotic, including drums, hand percussion and accessories.



## **Microphones** *Pages 53 - 61*

A collection of vocal microphones, instrument microphones and wireless systems suitable for recording applications and general PA.



## **MIDI & Studio** *Pages 62 - 65*

A wide variety of digital musical instruments and accessories, including fully featured MIDI controller keyboards and USB interfaces.



## **Stands & Mounts** *Pages 66 - 75*

Ranging from portable and lightweight to heavy duty, Chord's instrument stands are ideal for stage or display purposes. Also includes sheet music and microphone stands.



## **Bags & Cases** *Pages 75 - 87*

For safe storage and protection of your musical equipment, Chord provides a selection of gig bags, ABS cases, keycovers and microphone cases.



## **Leads** *Pages 88 - 95*

High spec. music leads as Elite and Classic Series, including speaker, audio, guitar and microphone leads.

**Most items in this catalogue are stocked.**

Just search a code on our website. If not listed, feel free to make an inquiry.

# Guitars & Accessories

Electric, acoustic and bass guitars built to exacting standards from high quality, sustainable materials and supported by a huge range of professional quality accessories.

## Guitars



**Electric**  
Pages 3 - 13



**Electric Bass**  
Pages 14 - 15



**Acoustic**  
Page 16



**Electro-Acoustic**  
Pages 17 - 20



**Classical**  
Page 20



**Mandolin & Ukuleles**  
Page 21



**Packages**  
Page 22 - 23

## Accessories



**Guitar Amplifiers & Accessories**  
Pages 23 - 26



**Guitar Wireless Systems**  
Page 26



**Effects Pedals**  
Pages 27 - 29



**Footswitches & PSUs**  
Page 30



**Guitar Slides & Capos**  
Page 31



**Tuners & Metronomes**  
Pages 32 - 35



**Strings**  
Pages 36 - 37



**Straps**  
Pages 38 - 39



**Plectrums**  
Page 40

## REBEL ELECTRIC GUITARS

Rebel electric guitar with compact, double cutaway alder body bolted to a maple neck. Adjustable hard-tail bridge and closed geared machine heads for accurate intonation and tuning. Custom designed to address a wider range of styles and tones than traditional models.

- Hot bridge humbucker for rock lead tones
- Easy access double cutaway
- Compact, contoured design

Controls ..... 2 tone, 1 volume, 5-way selector  
 Body ..... Alder  
 Neck ..... Maple (bolt-on)  
 Scale length ..... 650mm  
 Pickups ..... Humbucker + 2 single coil  
 Hardware ..... Chrome adjustable hardtail bridge  
 Dimensions ..... 330 x 990 x 60mm  
 Weight ..... 2.9kg

Stock code	Body colour	Orientation	Fingerboard
175.101	Black	Right-hand	Rosewood
175.102	Arctic white	Right-hand	Rosewood
175.104	Amber	Right-hand	Rosewood
175.106	Vintage green	Right-hand	Rosewood
175.107	Purple	Right-hand	Rosewood
175.109	Blueburst	Right-hand	Rosewood
175.110	Wine red sunburst	Right-hand	Rosewood
175.112	Trans wine red	Right-hand	Rosewood



## ROGUE ELECTRIC GUITARS

Rogue electric guitar with compact, single cutaway alder body bolted to a maple neck. Adjustable hard-tail bridge and closed geared machine heads for accurate intonation and tuning. Humbucker at the bridge with a single coil pickup at the neck offer a choice of tones to suit different music styles.

- Hot bridge humbucker for rock lead tones
- Adjustable hardtail bridge
- Compact alder body

Controls ..... Volume, Tone, 3-way selector  
 Body ..... Alder  
 Neck ..... Maple (bolt-on)  
 Scale length ..... 650mm  
 Pickups ..... Humbucker + single coil  
 Hardware ..... Chrome adjustable hardtail bridge  
 Dimensions ..... 325 x 990 x 60mm  
 Weight ..... 3.11kg

Stock code	Body colour	Orientation	Fingerboard
175.200	3-tone sunburst	Right-hand	Rosewood
175.201	Black	Right-hand	Rosewood
175.202	Arctic white	Right-hand	Rosewood
175.205	Surf blue	Right-hand	Rosewood
175.209	Blueburst	Right-hand	Rosewood
175.211	Butterscotch	Right-hand	Rosewood





### IMAGO ELECTRIC GUITAR

Imago electric guitar with compact, single cutaway alder body bolted to a maple neck. Humbucker and single coil pickups facilitate a wide range of tones.

A removable full front transparent cover allows custom artwork to be applied to the front of the guitar body cut from an A3 print using the cover as an outline guide. Custom graphic is included but can be replaced with any preferred design. Template can be downloaded from the website.

#### SUPPLIED GRAPHICS



Controls.....Volume, Tone, 3-way selector  
Body.....Alder  
Neck.....Maple  
Pickups.....Humbucker + single coil  
Hardware.....Chrome adjustable hardtail bridge  
Dimensions.....325 x 990 x 60mm  
Weight.....3.11kg

Stock code	Body colour	Orientation	Fingerboard	Scale length
175.270	Vari-graphic	Right-hand	Rosewood	650mm



### CSS78-BK ELECTRIC GUITAR

Highly versatile contemporary electric guitar. Body is all nato wood with deeply sculpted outline and carved top with "grain-through" matte black finish evoking a dark visual style.

The slim profile neck is nato with 24 fret rosewood fingerboard bolted to the body via an easy access joint. A Floyd Rose™ licensed vibrato system allows extreme dive-bombs and pitch sweeps.

Electrics are served by Wilkinson™ H-S-H set via a 5-way selector, volume and tone. A combination of heavy and subtle tones are available with a leaning towards the virtuoso rock genre.

- Floyd Rose licensed double locking vibrato system
- Wilkinson pickups
- Slim profile 24 fret neck

Controls.....5-way selector, volume, tone  
Pickups.....Wilkinson 2 humbucking, 1 single coil  
Vibrato system.....Double locking knife-edge  
Dimensions.....1022 x 312 x 101mm  
Weight.....3.18kg

Stock code	Body colour	Orientation	Fingerboard	Body and neck
174.314	Matte black	Right-hand	Rosewood	Nato wood
174.317	Matte black	Left-handed	Rosewood	Nato wood



### STAGE78 ELECTRIC GUITAR

An all nato wood set-neck construction guitar with a spartan, dark styling. The 22 wide profile frets are set into a rosewood fingerboard and the finish is matte black with a generous show-through of wood grain.

2 Wilkinson™ humbucking pickups deliver a punchy output via 2 volume and 2 tone controls, all governed by the rear mounted 3-position toggle switch. The whole package totally lends itself to all styles of rock guitar.

- 2 x Wilkinson covered humbucking pickups
- Set-neck construction
- Chamfered body
- Dark rock styling

Controls.....2 volume, 2 tone, 3-way toggle switch  
Body.....Nato  
Neck.....Nato  
Pickups.....2 x Wilkinson humbucker  
Hardware.....Chrome adjustable saddle and stop tailpiece  
Dimensions.....1010 x 340 x 70mm  
Weight.....3.33kg

Stock code	Body colour	Orientation	Fingerboard	Scale length
174.316	Matte black	Right-hand	Rosewood	630mm
174.319	Matte black	Left-handed	Rosewood	630mm



### V78 ELECTRIC GUITAR

All nato wood set-neck construction Vee guitar with dark rock styling. 22 wide profile frets set into a rosewood fingerboard with matte black finish and stain-enhanced grain.

2 Wilkinson™ humbucking pickups offer hard rock tones via the 3-position toggle switch and twin volume/single tone controls. Strikingly styled metal machine.

- 2 x Wilkinson humbucking pickups
- Set-neck construction

Controls.....2 volume, 1 tone,  
.....3-way toggle switch  
Body.....Nato  
Neck.....Nato  
Pickups.....2 x Wilkinson humbucker  
Hardware.....Chrome adjustable saddle  
.....and stop tailpiece  
Dimensions.....425 x 1120 x 60mm  
Weight.....3.64kg

Stock code	Body colour	Orientation	Fingerboard	Scale length
174.318	Matte black	Right-hand	Rosewood	650mm



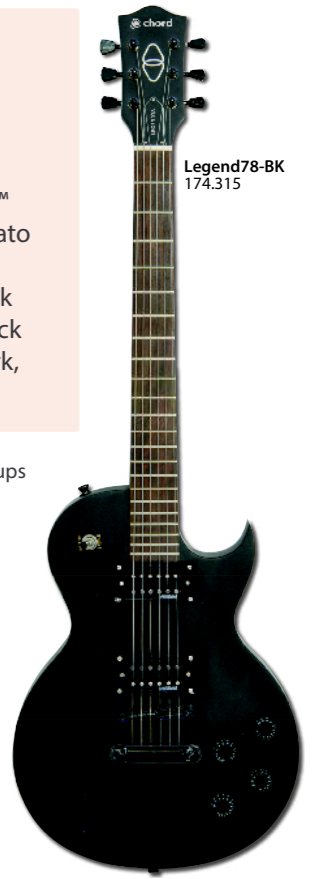
### LEGEND78 ELECTRIC GUITAR

Solid body single cutaway electric guitar with 2 Wilkinson™ humbucking pickups. Carved nato wood body and set neck with rosewood fingerboard and black hardware. Finish is all matte black with woodgrain visible for a dark, spartan effect.

- 2 x Wilkinson open coil humbucking pickups
- Set-neck construction
- Deep carved body

Controls.....2 volume, 2 tone,  
.....3-way toggle switch  
Body.....Nato  
Neck.....Nato  
Pickups.....2 x Wilkinson humbucker  
Hardware.....Black adjustable saddle  
.....and stop tailpiece  
Dimensions.....330 x 1000 x 80mm  
Weight.....3.5kg

Stock code	Body colour	Orientation	Fingerboard	Scale length
174.315	Matte black	Right-hand	Rosewood	630mm





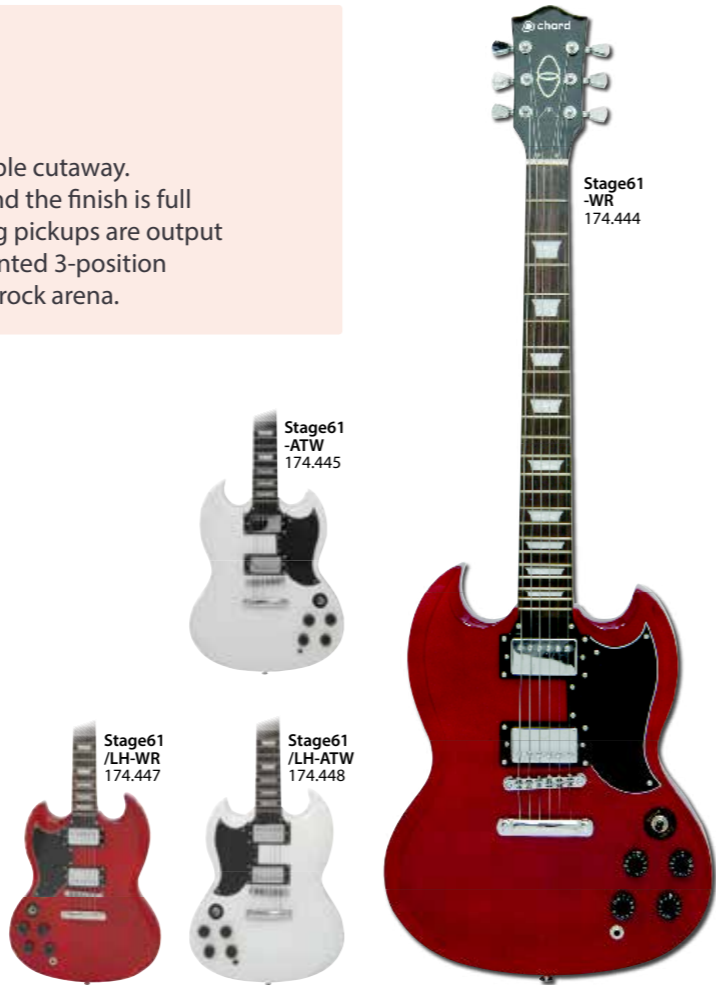
## STAGE61 ELECTRIC GUITARS

An all mahogany set neck construction guitar with carved double cutaway. The 22 wide profile frets are set into a rosewood fingerboard and the finish is full gloss with a batwing pickguard. 2 chrome covered humbucking pickups are output via 2 volume and 2 tone controls, all governed by the rear mounted 3-position toggle switch. Classic styling from the early 60's to present day rock arena.

- All mahogany body and neck
- Set neck construction
- Twin humbucking pickups
- Full gloss finish

Controls.....2 volume, 2 tone, 3-way toggle switch  
 Body.....Mahogany  
 Neck.....Mahogany  
 Pickups.....2 chrome covered humbuckers  
 Hardware.....Chrome adjustable saddle and stop tailpiece  
 Dimensions.....1010 x 340 x 70mm  
 Weight.....3.69kg

Stock code	Body colour	Orientation	Fingerboard	Scale length
174.444	Wine red	Right-handed	Rosewood	630mm
174.445	Arctic white	Right-handed	Rosewood	630mm
174.447	Wine red	Left-handed	Rosewood	630mm
174.448	Arctic white	Left-handed	Rosewood	630mm



## LEGEND55 GOLDTOP GUITAR

High quality solid body electric guitar with single cutaway and gold top finish. Mahogany body with maple cap and set mahogany neck with rosewood fingerboard. 2 soapbar single coil pickups are served by 1 volume and 1 tone control each and a 3-way toggle selector.

- Metallic gold-top finish
- Set-neck construction
- Retro soapbar pickups

Finish.....Metallic gold top, natural brown back  
 Controls.....2 volume, 2 tone, 3-way toggle  
 Body.....Mahogany with maple cap  
 Neck.....Mahogany  
 Pickups.....2 x soapbar single coil  
 Hardware.....Chrome adjustable saddle & stop tailpiece  
 Dimensions.....330 x 1000 x 80mm  
 Weight.....4.0kg

Stock code	Orientation	Fingerboard	Scale length
174.303	Right-handed	Rosewood	630mm



Guitar leads on pages 92-93

## LEGEND59 ELECTRIC GUITARS

A high quality solid body electric guitar with single cutaway and classic styling. Mahogany body with maple cap and set mahogany neck with rosewood fingerboard combine to make an extremely well crafted instrument.

Electrics are taken care of by 2 Wilkinson™ humbucking pickups with tone and volume controls each and a 3-way toggle selector.

- 2 x Wilkinson covered humbucking pickups
- Set-neck construction
- Crown-style fretboard markers
- Full front edge-binding
- Full gloss finish

Controls.....2 volume, 2 tone, 3-way toggle  
 Body.....Mahogany with maple cap  
 Neck.....Mahogany  
 Pickups.....2 x Wilkinson humbucker  
 Hardware.....Chrome adjustable saddle & stop tailpiece  
 Dimensions.....330 x 1000 x 80mm  
 Weight.....4.05kg

Stock code	Body colour	Orientation	Fingerboard	Scale length
174.301	Honeyburst	Right-hand	Rosewood	630mm
174.304	Dark red sunburst	Right-hand	Rosewood	630mm
174.307	Arctic white	Right-hand	Rosewood	630mm
174.310	Black	Right-hand	Rosewood	630mm
174.313	Honeyburst	Left-hand	Rosewood	630mm



## CAL-K1 SELF-BUILD GUITAR KIT

A complete kit of finished parts to build your own 'Chord' CAL electric guitar. Solid alder body and maple neck with rosewood fingerboard. Pre-wired pickguard with 3 single coil pickups and standard controls. High-grade materials are used and carefully machined to enable assembly without special skills or tooling.

- No special tooling or skills required for assembly
- Cost saving against fully assembled equivalent
- Ideal hobby or teaching project

Electrics.....3 single coil pickups, volume  
 .....+ 2 tone and 3-way selector  
 Body.....High-grade solid alder,  
 .....fully machined and contoured  
 Neck.....Maple  
 Hardware parts.....All chrome, classic vibrato bridge,  
 .....closed-gear machineheads and string trees  
 Dimensions......90 x 500 x 750mm  
 Weight.....5.1kg

Stock code	Fingerboard	Scale length (assembled)
174.460	Rosewood	650mm





**CAL63**  
**ELECTRIC GUITARS**

A traditionally styled standard electric guitar with 3 single coil pickups. The contoured alder body is bolted to the maple neck, fitted with 22 frets into the fingerboard.

The bridge has a vintage styled vibrato system and controls consist of 2 tones and a master volume with a 5-way lever selector. This is an affordable and versatile guitar.

- 3 single coil pickups
- Vibrato bridge system
- Traditional body styling
- Full gloss finish

Controls ..... 2 tone, 1 volume, 5-way selector  
 Body ..... Alder  
 Neck ..... Maple  
 Scale length ..... 650mm  
 Pickups ..... 3 single coil  
 Hardware ..... Chrome vintage style vibrato bridge  
 Dimensions ..... 330 x 995 x 60mm  
 Weight ..... 3.84kg



Stock code	Body colour	Orientation	Fingerboard
174.320	Vintage green	Right-hand	Rosewood
174.322	3-tone sunburst	Right-hand	Rosewood
174.325	Black	Right-hand	Rosewood
174.328	Amber	Right-hand	Rosewood
174.331	Cherry burst	Right-hand	Rosewood
174.334	Arctic white	Right-hand	Rosewood
174.337	Surf blue	Right-hand	Rosewood
174.340	Metallic red	Right-hand	Rosewood
174.343	Metallic blue	Right-hand	Rosewood
174.345	Purple	Right-hand	Rosewood
174.520	Vintage green	Right-hand	Maple
174.525	Black	Right-hand	Maple
174.534	Arctic white	Right-hand	Maple
174.537	Surf blue	Right-hand	Maple
174.540	Metallic red	Right-hand	Maple



Stock code	Body colour	Orientation	Fingerboard
174.543	Metallic blue	Right-hand	Maple
174.545	Purple	Right-hand	Maple
174.346	3-tone sunburst	Left-hand	Rosewood
174.349	Black	Left-hand	Rosewood
174.352	Amber	Left-hand	Rosewood
174.354	Purple	Left-hand	Rosewood
174.355	Cherry burst	Left-hand	Rosewood
174.356	Arctic white	Left-hand	Rosewood
174.358	Surf blue	Left-hand	Rosewood
174.361	Metallic red	Left-hand	Rosewood
174.364	Metallic blue	Left-hand	Rosewood
174.365	Vintage green	Left-hand	Rosewood
174.554	Purple	Left-hand	Maple
174.556	Arctic white	Left-hand	Maple
174.558	Surf blue	Left-hand	Maple
174.565	Vintage green	Left-hand	Maple



**Most items in this catalogue are stocked.**  
 Just search a code on our website. If not listed, feel free to make an inquiry.





CAL62-BK  
174.367



CAL62-SBL  
174.369



CAL62-3TS  
174.370



CAL62-VGR  
174.372



CAL62M-BTHB  
174.373



CAL62M-BK  
174.567



CAL62M-SBL  
174.569



CAL62M-VGR  
174.572

**CAL62**  
**ELECTRIC GUITARS**

The CAL62 is a single cutaway, traditionally styled slab body electric guitar.

These guitars are a deluxe version, having an edge-bound solid alder body bolted to a maple neck and rosewood or maple fingerboard. 2 single coil pickups are governed by master volume, tone and 3-way lever switch.

From new country twang to brash rock, this guitar has got it covered.

- 2 single coil pickups
- Bound top, solid slab body
- Full gloss finish



Controls.....1 volume, 1 tone, 3-way selector  
 Body.....Alder  
 Neck.....Maple  
 Scale length.....650mm  
 Pickups.....2 single coil  
 Hardware.....Chrome plate bridge  
 Dimensions.....330 x 1000 x 65mm  
 Weight.....3.72kg

Stock code	Body colour	Orientation	Fingerboard
174.367	Black	Right-hand	Rosewood
174.369	Surf blue	Right-hand	Rosewood
174.370	3-tone sunburst	Right-hand	Rosewood
174.372	Vintage green	Right-hand	Rosewood
174.373	Butterscotch blonde	Right-hand	Rosewood
174.567	Black	Right-hand	Maple
174.569	Surf blue	Right-hand	Maple
174.572	Vintage green	Right-hand	Maple
174.573	Butterscotch blonde	Right-hand	Maple
174.376	Black	Left-hand	Rosewood
174.379	3-tone sunburst	Left-hand	Rosewood
174.382	Butterscotch blonde	Left-hand	Rosewood



CAL62M-BTHB  
174.573



CAL62/LH-BK  
174.376



CAL62/LH-3TS  
174.379



CAL62/LH-BTHB  
174.382

Most items in this catalogue are stocked.

Just search a code on our website. If not listed, feel free to make an inquiry.



## CRS87 ELECTRIC GUITARS

Contemporary electric guitar with a bias towards the rock soloist.

Solid alder body bolted to a maple neck with 22 fret rosewood or maple fingerboard. The vibrato bridge, machine heads and other hardware are gold plated and the electrics are served by H-S-H pickup combination married to a master volume, tone and 5-way selector. Finish is a deep, translucent gloss.



- H-S-H pickup configuration
- Gold hardware
- Classic vibrato system
- Streamlined carved double-cutaway body

Controls..... 1 volume, 1 tone, 5-way selector  
 Body..... Solid alder  
 Neck..... Maple  
 Hardware..... Gold-plated vibrato bridge  
 Dimensions..... 975 x 313 x 60mm  
 Weight..... 3.04kg

Stock code	Version	Orientation	Fingerboard	Scale length
174.433	Blue	Right-hand	Rosewood	648mm
174.435	Metallic Pink	Right-hand	Maple	648mm
174.436	Red	Right-hand	Rosewood	648mm
174.439	Blue	Left-hand	Rosewood	648mm
174.442	Red	Left-hand	Rosewood	648mm



## CSS90 ROCK GUITAR

Highly versatile contemporary electric guitar. Alder body with deeply sculpted outline and carved top with high gloss finish. Slim profile maple neck with 24 fret rosewood fingerboard bolted to the body via an easy access joint.

Double-locking vibrato system for heavy pitch manipulation. Electrics are served by Wilkinson™ H-S-H set via a 5-way selector, volume and tone. Widely versatile tone set and features for all genres.

- Double-locking vibrato system
- H-S-H Wilkinson pickups
- Deep-cut sculpting for high fret access

Controls..... 5-way selector, volume, tone  
 Body..... Alder  
 Neck..... Maple  
 Pickups..... Wilkinson 2 humbucking, 1 single coil  
 Vibrato system..... Double locking knife-edge  
 Dimensions..... 1022 x 312 x 101mm  
 Weight..... 3.55kg

Stock code	Body colour	Orientation	Fingerboard	Scale length
175.581	Metallic black	Right-hand	Rosewood	645mm



Guitar straps on pages 38 - 39

## CAT50 SEMI-ACOUSTIC GUITARS

Semi-hollow full body arch-top guitar with spruce laminate top, mahogany laminate back and sides and mahogany neck with rosewood fingerboard.

A trapeze tailpiece ties to the rear bout and feeds an adjustable floating bridge. Pick-ups are 2 x covered humbuckers, each governed by a separate volume and tone control and switched via a 3-way toggle. Machine heads are closed geared type and all hardware is gold plated.

- Twin coil hum-cancelling pick-ups
- Full body arch-top styling
- Gold-plated hardware

Controls..... 2 volume, 2 tone and 3-way toggle switch  
 Top..... Spruce laminate  
 Back & Sides..... Mahogany laminate  
 Neck..... Mahogany  
 Pickups..... Dual covered humbuckers  
 Dimensions..... 1080 x 410 x 120mm  
 Weight..... 4.1kg

Stock code	Body colour	Orientation	Fingerboard	Scale length
174.471	Sunburst	Right-hand	Rosewood	625mm
174.472	White	Right-hand	Rosewood	625mm



## CAT62 SEMI-SOLID ELECTRIC GUITARS

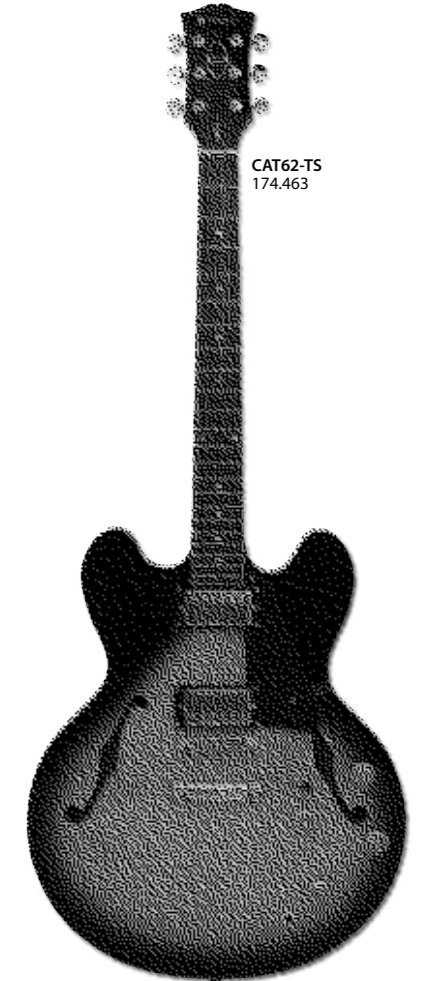
Semi-solid arch-top guitar with spruce laminate top, mahogany laminate back and sides and mahogany neck with rosewood fingerboard.

A stop tailpiece mounted into the sustain block feeds an adjustable bridge. Pick-ups are 2 x covered humbuckers, each governed by a separate volume and tone control and switched via a 3-way toggle. Machine heads are closed geared type and all hardware is gold plated.

- Twin coil hum-cancelling pick-ups
- Bound-edge arch top and back
- Gold plated hardware

Controls..... 2 volume, 2 tone and 3-way toggle switch  
 Top..... Spruce laminate  
 Back and sides..... Mahogany laminate  
 Neck..... Mahogany  
 Pickups..... Dual covered humbuckers  
 Dimensions..... 1080 x 410 x 70mm  
 Weight..... 3.8kg

Stock code	Body colour	Orientation	Fingerboard	Scale length
174.463	Tobacco sunburst	Right-hand	Rosewood	625mm
174.464	Gloss black	Right-hand	Rosewood	625mm
174.465	Cherry red	Right-hand	Rosewood	625mm
174.466	Gloss white	Right-hand	Rosewood	625mm





### CCB90 ELECTRIC BASS GUITARS

The CCB90 is our contemporary electric bass and benefits from a compact, contoured alder body with a bolted deep cut joint to its maple neck. This is an extremely comfortable bass that is as much at home with slap styles as finger or pick playing.

- 1 split coil humbucker and 1 single coil pickup
- Extended neck pocket for greater sustain
- Compact body styling
- Twin volume controls for pickup blending



Stock code	Body colour	Orientation	Fingerboard	Scale length
174.397	Sunburst	Right-hand	Rosewood	865mm
174.400	Black	Right-hand	Rosewood	865mm
174.403	Metallic red	Right-hand	Rosewood	865mm
174.406	Metallic blue	Right-hand	Rosewood	865mm
174.409	Sunburst	Left-hand	Rosewood	865mm
174.412	Black	Left-hand	Rosewood	865mm

Controls.....2 volume, 1 master tone  
 Body.....Alder  
 Neck.....Maple  
 Pickups.....1 split coil, 1 single coil (twinned polepieces)  
 Hardware.....Chrome plate bridge  
 Dimensions.....315 x 1160 x 60mm  
 Weight.....3.34kg

### CCB95 BASS GUITARS - 5 STRING

Contemporary 5-string electric bass with compact, contoured alder body with a bolted deep cut joint to a maple neck. 24-fret rosewood fingerboard and ultra-compact headstock with 5 closed geared tuners. Single coil and split humbucking pickups are controlled by 2 volumes and a single tone rotary.

Ideal for a wide range of modern genres and playing styles requiring extended range down to low B.

- Over-size pickups for even response
- Full SC and HB pickup blending
- Extended neck pocket for greater sustain
- Contemporary compact design



Stock code	Body colour	Orientation	Fingerboard	Scale length
174.650	Black	Right-hand	Rosewood	865mm
174.651	Metallic red	Right-hand	Rosewood	865mm
174.652	Metallic blue	Right-hand	Rosewood	865mm
174.655	Black	Left-hand	Rosewood	865mm

Controls.....2 volume, 1 master tone  
 Body.....Alder  
 Neck.....Maple  
 Pickups.....Oversize - 1 single coil, 1 split coil  
 Dimensions.....315 x 1180 x 60mm  
 Weight.....2.04kg



CCB90-SB  
174.397



CCB95-BK  
174.650

### CAB41 ELECTRIC BASS GUITARS

The CAB41 is a classically styled, yet versatile bass guitar.

The solid alder body generates solid deep tone via the split hum-cancelling pickup allied to volume and tone controls. The bolt on maple neck and rosewood or maple fingerboard has 21 large frets and the traditional headstock has 4 clover leaf tuning machine heads.

- Split coil hum cancelling pickup
- Contoured solid alder body
- Vintage open-geared machineheads



Stock code	Version	Orientation	Fingerboard	Scale length
174.421	Butterscotch	Right-hand	Rosewood	860mm
174.423	Black	Right-hand	Rosewood	860mm
174.621	Butterscotch	Right-hand	Maple	860mm
174.625	Arctic white	Right-hand	Maple	860mm
174.430	Butterscotch	Left-hand	Rosewood	860mm

Controls.....1 volume, 1 tone  
 Body.....Alder  
 Neck.....Maple  
 Pickups.....1 Split coil humbucker  
 Hardware.....Chrome plate bridge  
 Dimensions.....1120 x 340 x 70mm  
 Weight.....4.15kg

### CAB42 ELECTRIC BASS GUITARS

The CAB42 is a classically styled, yet versatile bass guitar. The solid alder body gives good weight and sustain to the tone generated by its 2 large single coil pickups, each with separate volume controls and a shared tone control.

The bolt on maple neck and rosewood fingerboard has 21 large frets and the traditional headstock has 4 clover leaf tuning machine heads. Overall, this is a bass for all styles from jazz to rock.

- 2 twinned pole-piece single coil pickups
- Offset contoured body styling
- Twin volume controls for pickup blending
- Vintage open-geared machineheads



Stock code	Body colour	Orientation	Fingerboard	Scale length
174.385	Wine red sunburst	Right-hand	Rosewood	865mm
174.388	Natural	Right-hand	Rosewood	865mm
174.391	3-tone sunburst	Right-hand	Rosewood	865mm
174.394	Natural	Left-hand	Rosewood	865mm

Controls.....2 volume, 1 master tone  
 Body.....Alder  
 Neck.....Maple  
 Pickups.....2 single coil (twinned pole-piece)  
 Hardware.....Chrome plate bridge  
 Dimensions.....345 x 1195 x 60mm  
 Weight.....4.42kg



CAB41-BTHB  
174.421



CAB42-WRS  
174.385



## CW26 WESTERN GUITARS

Western style, steel-strung acoustic guitars with spruce laminate top and linden laminate back and sides. Catalpa neck with rosewood fingerboard and bridge.

- Full gloss finish
- Edge bound body and neck



Top ..... Spruce laminate  
 Back & Sides ..... Linden laminate  
 Neck ..... Catalpa  
 Scale length ..... 650mm  
 Dimensions ..... 1040 x 400 x 125mm  
 Weight ..... 1.92kg

Stock code	Body colour	Orientation	Fingerboard
174.476	Natural	Right-handed	Rosewood
174.473	Black	Right-handed	Rosewood
174.474	Sunburst	Right-handed	Rosewood
174.477	Natural	Left-handed	Rosewood

## CSC35 SAPELE COMPACT ACOUSTIC GUITAR

Down-scaled western-style acoustic guitar with sapele top, back and sides. Neck is nato wood with generous finger spacing. Both bridge and 19 fret fingerboard are rosewood. Superb travel guitar or a high grade alternative for young learners.

- Ideal as a travel guitar
- High grade materials and construction

Body ..... Sapele top, back and sides  
 Neck ..... Nato  
 Scale length ..... 575mm  
 Dimensions ..... 890 x 325 x 95mm  
 Weight ..... 1.38kg

Stock code	Orientation	Fingerboard
174.453	Right-handed	Rosewood



## CW26CE ELECTRO WESTERN GUITARS

Steel-strung electro-acoustic guitars with cutaway western style body, spruce laminate top and linden laminate back and sides. Passive under saddle piezo pickup fed via volume and tone controls can be fed to an acoustic amplifier or PA system.

- Passive under saddle pickup
- Volume and tone controls



Top ..... Spruce laminate  
 Back and sides ..... Linden laminate  
 Neck ..... Catalpa  
 Scale length ..... 650mm  
 Pickup ..... Under saddle piezo strip  
 Controls ..... Volume and tone sliders  
 Dimensions ..... 1040 x 400 x 125mm  
 Weight ..... 1.93kg

Stock code	Body colour	Orientation	Fingerboard
175.261	Natural	Right-hand	Rosewood
175.262	Sunburst	Right-hand	Rosewood
175.263	Black	Right-hand	Rosewood

## CW36CE ELECTRO-ACOUSTIC GUITARS

Western-style electro-acoustic guitar with 4-band EQ preamp. Cutaway body has spruce top with mahogany back and sides, mahogany neck with rosewood fingerboard and bridge.

- 4-band EQ pre-amp
- Cutaway design for easy high fret access



Power supply ..... 9Vdc (PP3 battery)  
 Preamp ..... 4-band EQ  
 Top ..... Spruce laminate  
 Back & Sides ..... Mahogany laminate  
 Neck ..... Mahogany  
 Dimensions ..... 1045 x 400 x 130mm  
 Weight ..... 2.04kg

Stock code	Body colour	Orientation	Fingerboard	Scale length
174.485	Natural	Right-hand	Rosewood	645mm
174.486	Sunburst	Right-hand	Rosewood	645mm
174.487	Black	Right-hand	Rosewood	645mm
174.488	Natural	Left-hand	Rosewood	645mm





### CMJ4CE ELECTRO-ACOUSTIC GUITARS

A cutaway electro-acoustic guitar with active EQ. The mahogany neck and rosewood fretboard hold 21 frets with easy access by virtue of the cutaway. The under-saddle piezo pickup is served by a top-mounted 9V battery preamp with 4-band EQ.



- Onboard 4-band EQ preamp
- Mini jumbo style with venetian cutaway
- Flame print spruce laminate top
- Full gloss body finish



Stock code	Body colour	Orientation	Fingerboard	Scale length
174.415	Sunburst	Right-hand	Rosewood	648mm
174.416	Black	Right-hand	Rosewood	648mm
174.417	Honeyburst	Right-hand	Rosewood	648mm
174.418	Sunburst	Left-hand	Rosewood	648mm
174.419	Black	Left-hand	Rosewood	648mm

Power supply ..... 9V battery (supplied)  
 Controls ..... 4-band EQ + volume  
 Body ..... Laminate spruce top, basswood back & sides  
 Neck ..... Mahogany  
 Pickup ..... Under-saddle piezo  
 Hardware ..... Polymer saddle & nut, rosewood bridge  
 Dimensions ..... 375 x 1020 x 120mm  
 Weight ..... 2.03kg

### NATIVE-SERIES ELECTRO-ACOUSTIC GUITARS

Electro-acoustic guitars with cutaway mini-jumbo body styling and active 4-band EQ system. Body is entirely crafted from woods native to exotic forest regions of the world. Each has a distinctive grain and figuring which is enhanced by the lustrous clear lacquer.



- Highly figured exotic woods
- Onboard 4-band EQ preamp
- Mini jumbo style with venetian cutaway
- Full gloss clear finish



Stock code	Featured wood	Orientation	Fingerboard	Scale length
175.091	Zebrano	Right-hand	Rosewood	648mm
175.092	Piebald Ash	Right-hand	Rosewood	648mm
175.093	Flame Maple	Right-hand	Rosewood	648mm
175.094	Spalted Maple	Right-hand	Rosewood	648mm

Power supply ..... 9V battery (supplied)  
 Controls ..... 4-band EQ + volume  
 Neck ..... Mahogany  
 Pickup ..... Under-saddle piezo  
 Hardware ..... Polymer saddle & nut, rosewood bridge  
 Dimensions ..... 375 x 1020 x 120mm  
 Weight ..... 2.03kg



### SELECT-SERIES SOLID TOP GUITARS

Acoustic and electro-acoustic guitars with selected solid wood tops and laminate back and sides. Solid tops give these instruments a lively, full acoustic tone and excellent note definition. Finish is clear gloss lacquer to show the natural wood colour with decorative binding and sound-hole rosette.



- Selected solid spruce top
- Tuner + 5-band EQ on electro models
- Bound body & neck



Stock code	Body style	Dimensions	Weight
175.080	Western	400 x 1045 x 130mm	2kg
175.081	Western	400 x 1045 x 130mm	2.1kg
175.083	Grand Auditorium	400 x 1045 x 130mm	2.1kg
175.085	Orchestra	385 x 1015 x 110mm	1.8kg

Top ..... Solid Sitka Spruce  
 Back & Sides ..... Sapele laminate  
 Neck ..... Nato  
 Fingerboard & bridge ..... Rosewood  
 Scale length ..... 645mm



### CMB4CE BOWLBACK ELECTRO-ACOUSTIC GUITARS

Cutaway electro-acoustic guitar with composite moulded medium bowl back and laminate spruce top. Finish is a gloss burst over a printed flame-top effect. Neck is mahogany with 22-fret rosewood fingerboard. A 4-band EQ preamp serves the under-saddle pickup with output on a 6.3mm jack at the lower back of the body.



- Gloss burst over flame-top print
- Composite medium bowl back
- 4-band EQ preamp



Stock code	Body colour	Orientation	Fingerboard	Scale length
174.495	Sunburst	Right-hand	Rosewood	650mm
174.496	Blackburst	Right-hand	Rosewood	650mm

Power supply ..... 9V battery (supplied)  
 Controls ..... 4-band EQ + volume  
 Body ..... Laminate spruce top, composite back & sides  
 Neck ..... Mahogany  
 Pickup ..... Under-saddle piezo  
 Hardware ..... Polymer saddle & nut, rosewood bridge  
 Dimensions ..... 1070 x 405 x 110mm  
 Weight ..... 2.04kg





### CJB4CE

#### ELECTRO-ACOUSTIC BASS GUITARS

Electro-acoustic bass guitar with 4-band EQ preamp and tuner. Cutaway jumbo body design with mahogany long scale neck, back and sides and spruce top.

- Long scale and large body for deep bass tones
- Cutaway design for easy high fret access

Stock code	Body colour
174.395	Natural
174.396	Black



Power supply .....9Vdc (PP3 battery)  
 Preamp .....4-band EQ with tuner  
 Top .....Spruce laminate  
 Back & Sides.....Mahogany laminate  
 Neck.....Mahogany  
 Fingerboard.....Rosewood  
 Orientation.....Right-hand  
 Scale length.....865mm  
 Dimensions.....1230 x 410 x 130mm  
 Weight.....2.48kg



CJB4CE-NT  
174.395



CJB4CE-BK  
174.396

### CC-SERIES

#### CLASSICAL GUITARS

Classical guitars with linden construction and traditional slotted headstock, fitted with normal tension nylon strings. Ideal first instrument for students.

- Traditional wrap-over style bridge
- Wide fretboard for classical playing styles
- Position markers on fingerboard edge

Top, back and sides.....Linden laminate  
 Neck.....Catalpa  
 Fingerboard.....Ebonised maple

Stock code	Size	Scale length	Dimensions	Weight
174.552	1/2 (32")	555mm	275 x 810 x 90mm	1.07kg
174.551	3/4 (34")	590mm	305 x 870 x 100mm	1.2kg
174.550	4/4 (39")	644mm	373 x 985 x 115mm	1.6kg



CC12  
174.552



CC34  
174.551



CC44  
174.550

### CTM28

#### TRADITIONAL MANDOLIN

A traditional teardrop-style mandolin with a linden body and neck, and a rosewood fingerboard.

A floating adjustable bridge is fed from the loop-end strung tailpiece and tuning is handled by 2 rows of 4 open-g geared tuning machine heads.

Body and neck ..... Linden laminate  
 Tuning .....G, G, D, D, A, A, E, E  
 Dimensions .....270 x 690 x 80mm  
 Weight.....1.0kg

Stock code	Fingerboard	Scale length
174.506	Rosewood	345mm



CTM28  
174.506



Ukulele bags on page 77

### CU21

#### UKULELES

Soprano ukulele with linden top, back, sides and neck with 12 fret fingerboard. Finish is stained or solid colour and fitted with nylon strings, tuned via 4 geared machine-heads.

- Geared tuning machine-heads
- Linden top, back and sides
- Rosewood fingerboard and bridge



Body.....Linden laminate  
 Neck.....Linden  
 Fingerboard.....Rosewood  
 Scale length.....345mm  
 Dimensions.....545 x 175 x 65mm  
 Weight.....380g

Stock code	Body colour
174.512	Red
174.519	Orange <b>NEW</b>
174.513	Yellow
174.516	Green
174.515	Blue
174.514	Pink
174.517	Purple
174.511	Black
174.518	Brown <b>NEW</b>
174.509	Sunburst
174.510	Natural



**NEW**

### CAL63PK ELECTRIC GUITAR + AMP PACKAGE

Complete guitar package comprising a CAL63 electric guitar, 10W amp with switchable overdrive, digital LED guitar/bass tuner, strap, lead, 3 plectrums and a gig bag. Ideal for beginners and students.



Orientation ..... Right-hand  
Guitar: Dimensions ..... 330 x 995 x 60mm  
Guitar: Weight ..... 3.84kg  
Amplifier: Power supply ..... 240Vac 50Hz  
Amplifier: Output power ..... 10Wrms  
Amplifier: Functions ..... Drive, OD switch, Volume, Treble, Bass, Phones out  
Amplifier: Dimensions ..... 250 x 240 x 125mm  
Amplifier: Weight ..... 3.04kg  
Tuner: Functions ..... Guitar (6/7string), Bass (4/5/6 string)  
Tuner: Input ..... 6.3mm jack or internal mic.  
Tuner: Power supply ..... 2 x AAA batteries (supplied)  
Tuner: Dimensions ..... 96 x 50 x 17mm  
Tuner: Weight ..... 34g  
Gig bag: Dimensions ..... 1030 x 420 x 30mm  
Gig bag: Weight ..... 420g

Stock code	Body colour
175.230	Sunburst
175.231	Black
175.232	Red
175.233	Blue



**NEW**

### CAB41PK ELECTRIC BASS + AMP PACKAGE

Complete bass package comprising a CAB41 bass guitar, 10W amp with 3-band EQ, digital LED guitar/bass tuner, strap, lead, 3 plectrums and a gig bag. Ideal for beginners and students.



Orientation ..... Right-hand  
Guitar: Dimensions ..... 1120 x 340 x 70mm  
Guitar: Weight ..... 4.15kg  
Amplifier: Power supply ..... 240Vac 50Hz  
Amplifier: Output power ..... 10Wrms  
Amplifier: Functions ..... Volume, Bass, Middle, Treble, Aux in, Phones out  
Amplifier: Dimensions ..... 265 x 245 x 130mm  
Amplifier: Weight ..... 2.8kg  
Tuner: Functions ..... Guitar (6/7string), Bass (4/5/6 string)  
Tuner: Input ..... 6.3mm jack or internal mic.  
Tuner: Power supply ..... 2 x AAA batteries (supplied)  
Tuner: Dimensions ..... 96 x 50 x 17mm  
Tuner: Weight ..... 34g  
Gig bag: Dimensions ..... 1260 x 420 x 30mm  
Gig bag: Weight ..... 480g

Stock code	Body colour
175.250	Sunburst
175.251	Black
175.252	Red
175.253	Blue



### CW26PK WESTERN GUITAR PACKAGE

Complete acoustic guitar package comprising a CW26 guitar, digital LED guitar/bass tuner, strap, 3 celluloid picks and a padded gig bag. Ideal for beginners and students.



Guitar type ..... CW26 western guitar  
Orientation ..... Right-hand  
Guitar: Dimensions ..... 1040 x 400 x 125mm  
Guitar: Weight ..... 1.92kg  
Tuner: Functions ..... Guitar (6/7string), Bass (4/5/6 string)  
Tuner: Input ..... 6.3mm jack or internal mic.  
Tuner: Power supply ..... 2 x AAA batteries (supplied)  
Tuner: Dimensions ..... 96 x 50 x 17mm  
Tuner: Weight ..... 34g  
Gig bag: Dimensions ..... 1040 x 420 x 40mm  
Gig bag: Weight ..... 590g

Stock code	Body colour
175.400	Natural

### CV-30 VALVE GUITAR AMPLIFIER

All valve design guitar combo with separate clean and overdrive channels, 3-band EQ with bright switch and spring reverb.

The rear panel has a 6.3mm jack input for channel/reverb footswitch (not supplied) and send and return for the effects loop.

- 12" Celestion® speaker
- High spec matched valves



CV-30	
Stock code	173.047
Wattage	30W
Power supply	230Vac, 50Hz
Controls	Clean level, overdrive gain & level, treble, middle, bass, bright switch, reverb, master
Connections	Guitar input, effects loop send & return, channel/reverb footswitch, speaker outputs
Valves	1 x 12AT7, 2 x 12AX7, 2 x 6L6
Dimensions	470 x 510 x 280mm
Weight	19.1kg

### RUBY TUBES



Stock code	Model number
173.028	12AT7C
173.031	12AX7A
173.034	2 x 6L6GC
173.037	2 x EL84C
173.049	2 x EL34BHT



## CVH-SERIES VALVE HYBRID GUITAR AMPLIFIERS

NEW

Guitar combos with separate foot-switchable Normal and Drive channels, 3-band EQ per channel effect loop and spring reverb. A 12AX7HG valve drives the preamp, delivering tones from warm to blistering hot through a solid-state power section. High gain lead channel with contour control make these amps ideal for hard rock styles.



- High gain valve preamp
- Onboard spring reverb
- Twin channel foot-switchable



	CVH-40	CVH-80
Stock code	173.090	173.091
Power supply	230Vac 50Hz (IEC)	230Vac 50Hz (IEC)
Inputs	Guitar (jack), footswitch (jack), aux (stereo minijack)	
Output connections	Headphones	Headphones, line out, ext. speaker (jack)
Controls: Clean channel	Bass, treble, volume	Bass, middle, treble, volume
Controls: Drive channel	Gain, bass, treble, contour, volume	Gain, boost, bass, treble, contour, volume
Controls: Master	Reverb	Reverb, Volume
Speaker	10" vintage voiced	12" vintage voiced
Output power	40Wrms	80Wrms
Dimensions	405 x 375 x 210mm	520 x 475 x 250mm
Weight	10.1kg	16.9kg

## CG-SERIES GUITAR AMPLIFIERS

Guitar amplifiers with clean and overdrive options and 3-band EQ. The cabinets have an angled and recessed control panel with retro "chicken-head" knobs, metal corner protectors, basket-weave style grill cloth and traditional vinyl covering.



- Headphone output for silent practice
- Aux input for playback devices (excluding CG-10)
- Independent EQ for each channel (only CG-60)
- Authentic vintage tone

Model no.	CG-10	CG-15	CG-30	CG-60
Stock code	173.044	173.045	173.046	173.048
Wattage	10W	15W	30W	60W
Power supply	230V 50Hz (IEC connector input)			
Controls	Gain, Drive switch, Volume, Treble, Middle, Bass	Clean volume, Overdrive gain + volume, bass, middle, treble, reverb	Clean volume, Overdrive gain + volume, bass, middle, treble, reverb	Clean volume, bass & treble, Overdrive gain, (mid) contour, bass, treble, volume, reverb
Connections	Guitar input (6.3mm jack), Headphone output input (6.3mm jack)	Input, AUX in, headphones out	Input, AUX in, footswitch, headphones out	Guitar input, footswitch input, effects loop send & return, headphone out (all 6.3mm jack), aux in (RCA)
Dimensions	300 x 290 x 120mm	340 x 325 x 180mm	410 x 380 x 200mm	480 x 530 x 280mm
Weight	4kg	7kg	12.5kg	17.3kg

## CB-SERIES BASS AMPLIFIERS

Combo amplifiers for bass guitars with extended EQ control and ported, angled speaker cabinet. Finished in durable vinyl covering with perforated steel speaker grille.



- Compressor on CB-100 and CB-200
- Low frequency optimised cabinet
- High power amplifier section
- Multi-band EQ control

	CB-25	CB-50	CB-100	CB-200
Stock code	173.442	173.443	173.444	173.445
Wattage	25W	50W	100W	200W
Power supply	240Vac (IEC)			
Speaker units	8" HD driver	10" HD driver	12" HD main + piezo HF unit	15" HD main + piezo HF unit
Controls	Input, Phones out, MP3 in	Input (Active/Passive), Phones out, Send & Return	Input (Active/Passive), Phones out, Send & Return, XLRM D.I. out, Ext Speaker	Input (Active/Passive), Phones out, Send & Return, XLRM D.I. out, Ext Speaker
Connections	Gain, 4-band EQ, Master	Gain, 7-band EQ, Master	Gain, 7-band EQ, Comp, Master	Gain, Pre-shape, 7-band EQ, Comp, Master
Equalization	Low, Low-mid, High-mid, High	50, 120, 400, 500, 800Hz, 4.5, 10kHz (+/- 15dB)	50, 120, 400, 500, 800Hz, 4.5, 10kHz (+/- 15dB)	50, 120, 400, 500, 800Hz, 4.5, 10kHz (+/- 15dB)
Dimensions	365 x 395 x 300mm	425 x 455 x 320mm	470 x 525 x 340mm	530 x 630 x 420mm
Weight	12kg	16kg	23kg	25.6kg

## CA SERIES ACOUSTIC GUITAR AMPLIFIERS

Combo amplifiers for electro-acoustic guitars with additional microphone input, shared spring reverb and guitar chorus effect. High output amplifier drives a 2-way speaker set fitted into a ported, angled speaker cabinet.



	CA-15	CA-30	CA-60
Stock code	173.431	173.432	173.433
Wattage	15W	30W	60W
Power supply	240Vac 50Hz (IEC)		
Effects	Chorus (guitar)	Chorus & reverb (foot-switchable)	Chorus & reverb (foot-switchable)
Speaker units	150mm (6") + 25mm (1") concentric tweeter	200mm (8") dual concentric + 50mm (2") HF driver	250mm (10") dual concentric + 50mm (2") HF driver
EQ controls	Bass, Mid, Treble	Bass, Mid, Mid Freq, Treble	Bass, Mid, Mid Freq, Treble & Mic. tone
Inputs	Guitar (jack), MP3 in (stereo minijack) Mic (combo), guitar (jack), CD (RCA)		
D.I output	N/A Balanced XLR		
Dimensions	295 x 340 x 260mm	365 x 395 x 300mm	425 x 455 x 320mm
Weight	7.4kg	11.5kg	16.5kg



### CG-2

#### PORTABLE GUITAR AMPLIFIER

A miniature 2W guitar amplifier in a plastic cabinet. Controls for master volume, tone and a switch for On/Off/Overdrive.

- Belt clip for attaching to clothing
- Headphone output



Stock code  
**169.275**

Power supply ..... 9V battery (supplied) or optional 9Vdc, 500mA mains adaptor (174.001)  
Controls ..... Volume, Tone, On/Off/OD  
Connections ..... Guitar input, headphone output, DC adaptor input  
Rated output power ..... 2W @ 5% THD  
Speaker ..... 3" 8Ω  
Dimensions ..... 130 x 133 x 65mm  
Weight (without battery) ..... 330g

### AMPJACK

#### HEADPHONE AMPLIFIER

Plug-in headphone amplifier for guitar with internal lithium cell (re-chargeable via mini-USB) offering up to 15 hours of playing time. Clean to fully distorted tones and 3.5mm line input for convenient silent practice.

- Rechargeable via supplied USB lead
- High gain amp model



Stock code Model number  
**174.190** Ampjack

Power supply ..... Internal rechargeable battery (via USB)  
Controls ..... Drive, Tone and Volume  
Connections ..... Guitar jack, 3.5mm headphone out & aux in  
Indicators ..... Charge status, 4 x LED  
Dimensions ..... 85 x 80 x 19mm  
Weight ..... 56g

### VGW1

### VHF

#### VHF GUITAR WIRELESS SYSTEM

For guitars and other instruments with a 6.3mm jack output.

- beltpack transmitter
- 1U half width receiver
- Up to 50m range
- 9V PP3 battery included
- 6.3mm jack lead included



Stock code Frequency  
**171.848** 174.1MHz

Power supply - receiver ..... 10Vac 250mA (supplied)  
Output connections ..... Balanced XLR, 6.3mm jack  
S/N ratio ..... >85dB  
THD ..... <0.2%  
Dimensions - beltpack transmitter ..... 205 x 68 x 25mm (ex. antenna)  
Dimensions - receiver ..... 45 x 210 x 180mm  
Weight - beltpack transmitter ..... 76g (no battery)  
Weight - receiver ..... 573g

### iGTR

#### GUITAR/BASS CONVERTER FOR iPhone®

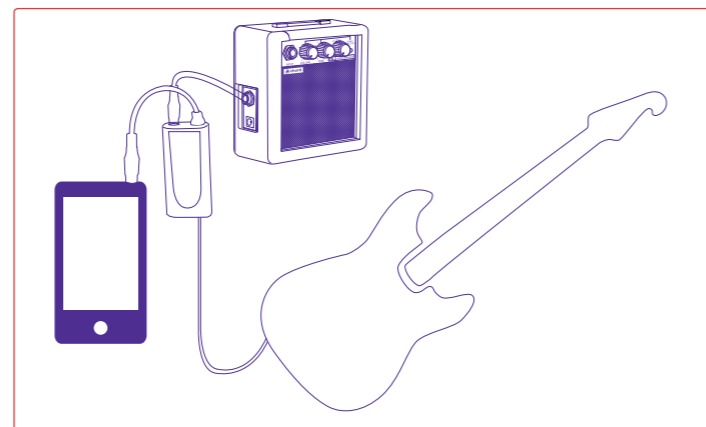
Interface to connect electric guitar to iPhone, iPod Touch or iPad for use with one of the many apps available for free or paid download.

- Suitable for iPhone, iPod Touch and iPad
- Operates with various guitar apps
- No PSU required



Stock code Model number  
**173.614** iGTR

Input ..... 6.3mm instrument jack  
Outputs ..... 6.3mm amp out, 3.5mm headphone  
Dimensions ..... 85 x 40 x 15mm  
Weight ..... 21g



## Effects Pedals

Effects pedals bring dimension and colour to the world of guitar tones. A good stomp box can mean the difference between a bland riff or an instantly recognisable hook line, based on a combination of the effect and the way that the player exploits it.

Chord guitar pedals take this dark art back to its roots with a range of stage-proof individual pedals using discreet circuitry and enough variation of settings to make the tone your own.

Choose from 19 different models, offering a vast array of options to combine and meld, creating new tones and audio scenery from your guitar or bass.

Each Chord guitar pedal offers professional results in a super-rugged housing.

- Sturdy die-cast metal housing
- Discreet circuitry / analogue preamps
- Powered via 9V battery or optional mains adaptor
- Dimensions: 80 x 130 x 55mm
- Weight: 620g

### DS-50

#### DISTORTION PEDAL

A distortion pedal for guitar with recessed controls in a die-cast metal case with rubber treadle.

- Level, Tone and Dist controls
- Authentic analogue circuitry



Stock code  
**174.201**

### OD-50

#### OVERDRIVE PEDAL

An overdrive pedal for guitar offering the guitarist a natural driven amp sound.

- Level, Tone and Drive controls
- High quality analogue circuitry



Stock code  
**174.204**

### MT-50

#### METAL DRIVER PEDAL

A high gain distortion pedal, specifically aimed at producing hard-hitting metal tones.

- Level, Gain and Filter controls



Stock code  
**174.210**

### SD-50

#### SUPER DISTORTION PEDAL

Low and High EQ controls give a more specific voice to the level of gain selected to produce a wide range of distortion tones.

- Wide ranging gain structure
- Gain, Level, High and Low controls



Stock code  
**174.213**

### HM-50

#### HEAVY METAL PEDAL

A heavy metal pedal offering high gain distortion allied with extreme EQ flexibility to provide a range of rock tones.

- Dist, Level, High, Low, Middle & Mid Freq controls



Stock code  
**174.207**

### CM-50

#### COMPRESSOR PEDAL

A compressor pedal for sustained clean guitar notes. The ideal tool for smooth arpeggios and mellow lead lines.

- Pure analogue circuitry
- Level, Comp and Sustain controls



Stock code  
**174.216**



### GE-50 GRAPHIC EQ PEDAL

A 7-band graphic equalizer pedal for powerful and accurate tone shaping for clean or distorted.

- 7 frequency boost/cut sliders and master level slider
- Frequency bands set to suit guitar signal



Stock code  
174.219

### PH-50 PHASER PEDAL

A fully analogue phase shifter pedal that re-creates a classic spatial rotating effect.

- Rate, Resonance and Depth controls
- Traditional analogue circuitry



Stock code  
174.222

### FL-50 FLANGER PEDAL

This FL-50 pedal is capable of all the expected variations, from "jet" sweeps to vocal-style.

- Depth, Rate and Resonance controls
- All analogue circuitry for pure vintage effect



Stock code  
174.225

### RV-50 DIGITAL REVERB PEDAL

A digital reverb pedal which gives complex and lush reverb effects from its internal DSP engine.

- Variable Tone, Decay Time and Effect Level



Stock code  
174.246

### TR-50 TREMOLO PEDAL

Produces a variety of tremolo effects by modulating the output volume.

- Variable wave shape, rate and depth
- Pure analogue circuitry



Stock code  
174.249

### OC-50 OCTAVE PEDAL

This octave pedal for guitar gives added strength and depth to single note guitar lines.

- Dual rotary controls for blending direct and octave tones
- Oct+Drive and Oct+Sub modes
- Powered by 9V battery or optional PSU



Stock code  
174.252

### DL-50 DELAY PEDAL

A versatile delay effect pedal for guitar to produce echo and doubling effects.

- Delay Time, Feedback and Delay Level controls



Stock code  
174.231

### CH-50 CHORUS PEDAL

Gives a lush, ringing effect to any guitar line, giving the impression of width and spread.

- Speed, Depth and Effect Level controls



Stock code  
174.228

### BOD-50 BASS OVERDRIVE PEDAL

Gives a wide range of gain control without diminishing the low frequency response.

- Level, Gain, Tone and High/Low EQ controls



Stock code  
174.234

### NG-50 NOISE GATE PEDAL

This noise gate pedal reduces the unwanted signal noise in multi-pedal guitar set ups.

- Sensitivity, attack, decay and level controls



Stock code  
174.255

### BEQ-50 BASS GRAPHIC EQ PEDAL

A 7-band graphic equalizer pedal tailored for use with bass guitar, from rock to jazz to slap styles.

- 7 frequency boost/cut sliders and master level slider
- Up to 15dB of cut or boost per frequency



Stock code  
174.237

### BCH-50 BASS CHORUS PEDAL

An analogue chorus pedal with an integral low cut filter to give varying levels of chorus flavour.

- Depth, Level, Low Filter and Rate controls



Stock code  
174.240

### TU-50 PEDAL TUNER

A large LED display indicates the closest note and a 9 LED "virtual dial" shows flat or sharp tuning variation.

- Through or muted outputs
- ±2 cent tuning accuracy
- Wide tuning range from 31.77Hz to 4022.9Hz



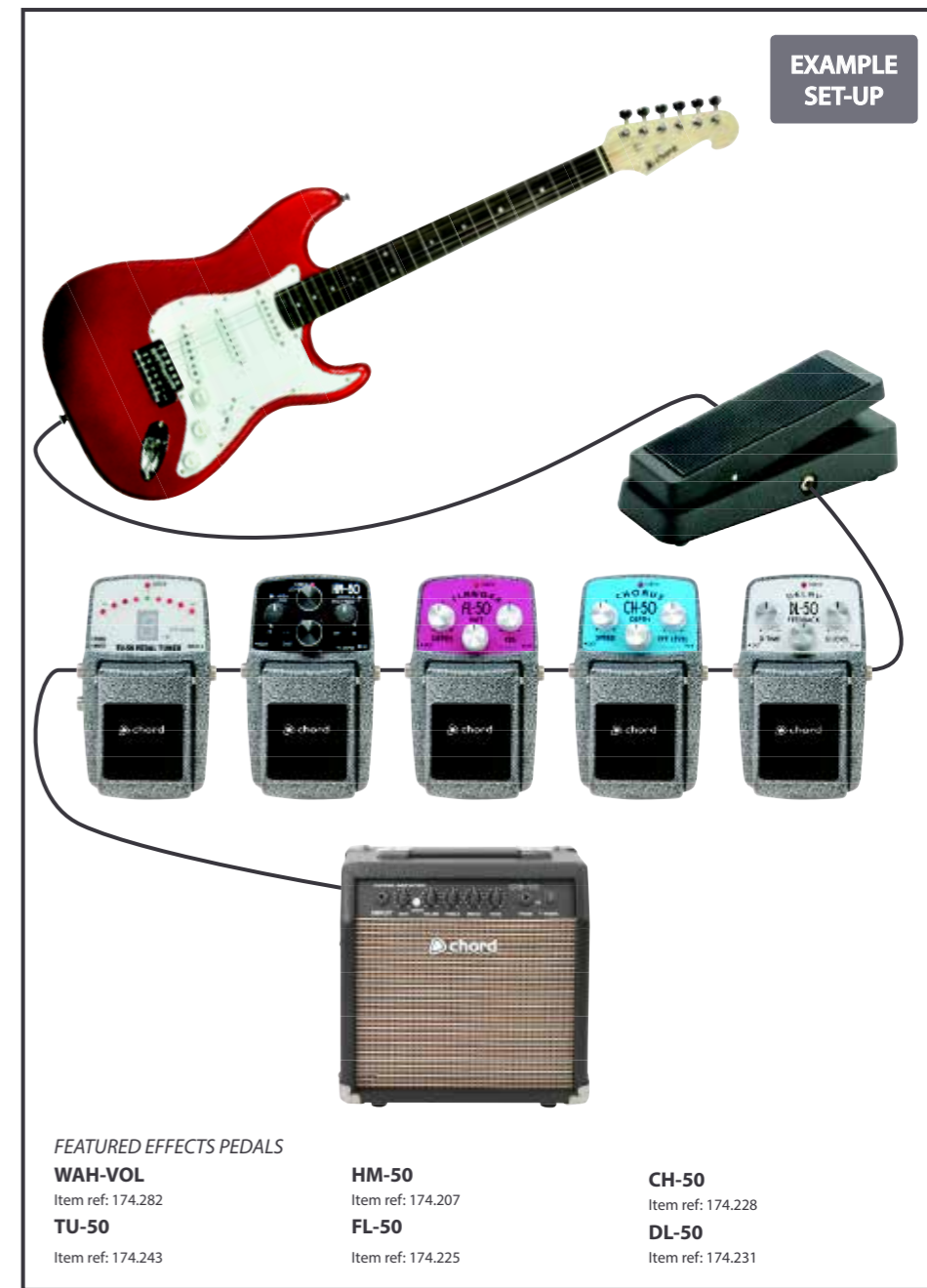
Stock code  
174.243

### Tuners & metronomes



on pages 32 - 35

### EXAMPLE SET-UP



#### FEATURED EFFECTS PEDALS

**WAH-VOL**  
Item ref: 174.282

**TU-50**  
Item ref: 174.243

**HM-50**  
Item ref: 174.207

**FL-50**  
Item ref: 174.225

**CH-50**  
Item ref: 174.228

**DL-50**  
Item ref: 174.231



**COMBINED WAH AND VOLUME PEDAL**

**NEW**

A vintage-style inductor driven wah-wah circuit is switchable via "toe-press" action to convert into a volume pedal for bowing and swell effects. All analogue circuitry guarantees authentic yet versatile effects.



Stock code	Model number
174.282	Wah-Vol

Power supply ..... 9Vdc PP3 battery or optional DC adaptor  
 Connections ..... Jack input & output (6.3mm), 9Vdc input  
 Controls ..... Rocker pedal & toe-press switch  
 Dimensions ..... 252 x 110 x 71mm  
 Weight ..... 830g (no battery)

**STEREO VOLUME PEDAL**

**NEW**

Dual mono or stereo operation allow swell effects and level adjustment for guitars, keyboards and other stereo signals.

The metal casing protects against RF and mains interference whilst offering a resilient pedal for road use. Minimum volume setting can be adjusted via a side-mounted rotary control.



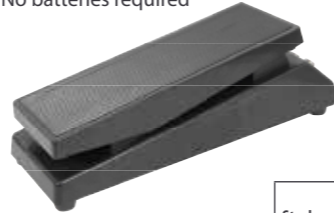
Stock code	Model number
174.283	Pro-Vol

Connections ..... L+R jack input, L+R jack output (6.3mm)  
 Controls ..... Rocker pedal, range rotary & high/low switch  
 Resistance ..... 500k or 25k max.  
 Dimensions ..... 252 x 110 x 71mm  
 Weight ..... 810g (no battery)

**STEREO VOLUME PEDAL**

Stereo volume pedal in a sturdy plastic housing with 2 x 6.3mm jack inputs and 2 x 6.3mm jack outputs. A rotary control beneath the treadle sets the minimum volume level.

- Rotary control to preset minimum volume level
- Stereo or mono operation
- No batteries required

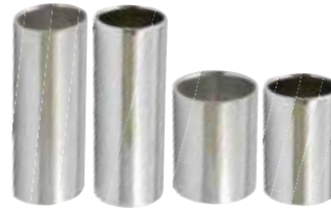


Stock code	Model number
174.259	RVP-50

Connections ..... In 1, In 2, Out 1, Out 2  
 Max. resistance signal-to-earth ..... 50kΩ  
 Controls ..... Treadle volume, rotary minimum volume  
 Dimensions ..... 75 x 90 x 240mm  
 Weight ..... 490g

**GUITAR SLIDES**

Chrome plated steel guitar slides.



Stock code	Model number	Size
173.208	LGS25	58 x 25mmØ
173.209	LGS22	58 x 22mmØ
173.218	SGS25	32 x 25mmØ
173.219	SGS25	32 x 22mmØ

**GUITAR POLISHING KIT**

Guitar polish 100ml spray bottle with cloth and string winder.



Stock code	Model number
173.210	GPK3

**ROSIN BLOCK**

Rectangular block of rosin for bow strings set into a wooden applicator.



Dimensions ..... 57 x 21 x 30mm  
 Weight ..... 24g

**STRING WINDER**

Specially designed socket to accept tuning machineheads with integral bridge pin remover.



Stock code	Model number
173.198	GSW2

Dimensions ..... 25 x 55 x 110mm  
 Weight ..... 43g

**STRING WINDER - STANDARD**

Standard clear plastic string winder with notch for removing bridge pins.



Stock code	Model number
173.197	GSW1

Dimensions ..... 25 x 55 x 110mm  
 Weight ..... 30g

**BUDGET CAPOS**

A wrapover-style capo. Flat rubberised fretting bar for even pressure. Ratchet and lever mechanism for different neck thicknesses.



Dimensions ..... 17 x 16 x 64mm  
 Weight ..... 30g

Stock code	Model number	Version
173.200	RCCG1	Classical
173.201	RCWG1	Western/Electric

**ELASTIC GUITAR CAPO**

Universal adjustable capo. Ideal for traditional and acoustic guitars.



Stock code	Model number
173.202	MFC1

**SQUEEZE CAPO - ACOUSTIC/ELECTRIC**

Easy removal or replacement and quick position change.



Stock code	Model number
173.203	SQC1

Dimensions ..... 145 x 12 x 95mm  
 Dimensions : in packaging ..... 200 x 20 x 110  
 Weight ..... 76g

**COMPACT SPRING LEVER CAPO**

Compact nickel plated lever capo with adjustable tension and rubber grips for precise pressure adjustment and quick-release positioning.



Stock code	Model number
173.205	CSC2

Dimensions ..... 55 x 78 x 10mm  
 Weight ..... 50g

**GUITAR SPRING CAPO**

Metal capo with easy to fit spring loaded mechanism. Ideal for acoustic or electric guitars.



Dimensions ..... 114 x 152 x 25mm  
 Weight ..... 60g

Stock code	Model number	Colour
173.204	SC2A	Silver
173.214	SC2B	Black
173.211	SC2W	White

**SOUNDHOLE BLOCK**

Rubber cover to be fitted into the soundhole of an electro-acoustic guitar.

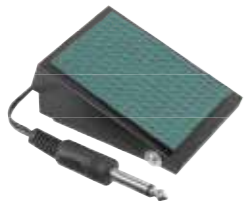


Stock code	Model number
174.791	SHB1L

Fitting ..... Circular soundhole 100mmØ  
 Dimensions ..... 14 x 110mmØ  
 Weight ..... 42g

**FOOT SWITCH**

Foot switch with On/Off switch (latching). Complete with a fixed 3.0m lead fitted with a 6.3mm jack plug.



Stock code	Model number
173.074	FS05

Switch rating ..... 60V, 1A  
 Dimensions ..... 88 x 68 x 32mm  
 Weight ..... 158g

**SINGLE FOOTSWITCH**

Footswitch mounted in a conical pressed steel case and flexible plastic base with integral 4.0m lead terminated with a 6.3mm jack plug.

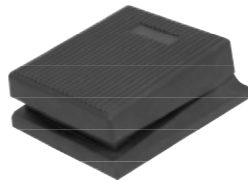


Dimensions ..... 50 x 90mmØ  
 Weight ..... 270g

Stock code	Model number	Type
174.290	FS1N	Non-latching
174.291	FS1L	Latching

**NON-LATCHING PEDAL SWITCH**

Complete with a polarity switch on the base and an integral 1.5m lead with 6.3mm jack plug.



Stock code	Model number
173.081	FS-2N

Dimensions ..... 80 x 60 x 105mm  
 Weight ..... 209g

**GUITAR EFFECTS UK POWER ADAPTOR 9Vdc**

A UK plug-in power adaptor for powering Chord and various other brand guitar effects.

- Compact and lightweight
- Energy efficient design
- Up to 1000mA output



Stock code	Model number
174.001	GTDC0910UK

Mains input ..... 100-240Vac, 50/60Hz  
 Output ..... 9Vdc, 1000mA max.  
 Polarity ..... Fixed negative centre, positive sleeve  
 Connector ..... Fixed 5.5 x 2.1mm DC jack  
 Dimensions ..... 75 x 50 x 42mm  
 Weight ..... 120g

**POWER BANK 9Vdc**

Power bank for simultaneous connection of up to 10 effects pedals. 2.1mm DC sockets with negative centre polarity.

- Supplied with ten 280mm DC-DC power leads
- Mains adaptor supplied



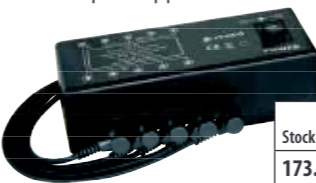
Stock code	Model number
173.080	DC-9

Power supply ..... 15Vdc, 1A  
 Output ..... 9Vdc, 100mA / outlet  
 Dimensions ..... 134 x 50 x 43mm  
 Weight ..... 219g

**POWER BANK 9 & 18Vdc**

Power bank with 6 x 9Vdc and 4 x 18Vdc outputs for simultaneous connection of up to 10 effects pedals. 2.1mm DC sockets with negative centre polarity.

- Supplied with ten 280mm DC-DC power leads
- Mains adaptor supplied



Stock code	Model number
173.083	DC-18

Power supply ..... 24Vdc, 1.5A  
 Output ..... 6 x 9Vdc, 100mA / outlet, 4 x 18Vdc, 200mA / outlet  
 Dimensions ..... 134 x 50 x 43mm  
 Weight ..... 219g



### CCT6 GUITAR LED CLIP TUNER

Clip contact tuner for guitar and bass guitar with string indicator and rotating clip mount.

- Bright LED ladder display
- Auto-detect tuning



Stock code  
**173.280**

Power supply ..... 3V button cell (CR2032 supplied)  
Tuning range..... 27.5Hz-1760Hz  
Accuracy..... ±1.0 cent  
Dimensions..... 52 x 60 x 17g  
Weight..... 30g

### CCT500 MULTI-MODE CLIP TUNER

Compact clip tuner with backlit LCD display showing a virtual needle which changes from red to green when in tune. Modes for chromatic, guitar, bass, violin and ukulele.

- Multi-mode tuning for different instruments
- Auto-detect tuning



Stock code  
**173.281**

Power supply ..... 3V button cell (CR2032 supplied)  
Tuning modes ..... Chromatic, guitar, bass, violin, ukulele  
Tuning range..... A0 (27.5Hz) to A6 (1760Hz)  
Accuracy..... ±0.5 cent  
Dimensions..... 76 x 65 x 26mm  
Weight..... 28g

### CCT-300GB CLIP GUITAR TUNER

Ultra-compact clip-on vibration tuner for guitar, bass or chromatic tuning. The display head can be positioned for easy viewing.

The display shows a virtual needle to indicate the detected pitch and the backlight changes to indicate when the note is in-tune.



Stock code  
**173.277**

Power supply ..... 3Vdc CR2032 battery (supplied)  
Tuning modes ..... Guitar, Bass, Chromatic  
Tuning stability..... ±1Cent  
Dimensions ..... 60 x 85 x 25mm  
Weight..... 25g (no battery)  
Tuning range..... 27.5Hz - 2.75kHz

### CCT45 LARGE LCD CLIP-ON MULTI-TUNER

Multi-mode contact tuner with large, easy-to-read blue backlit LCD display which switches to green when in-tune. Modes for chromatic, guitar, bass, violin and ukulele.

- Multi-mode tuning for different instruments
- Auto-detect tuning



Stock code  
**173.269**

Power supply ..... 3V button cell (CR2032 supplied)  
Tuning modes ..... Chromatic, guitar, bass, violin, ukulele  
Tuning range..... A0 (27.5Hz) to A6 (1760Hz)  
Accuracy..... ±0.5 cent  
Dimensions ..... 38 x 60 x 43mm  
Weight..... 40g

### WST-550C UNIVERSAL CLIP-ON CHROMATIC TUNER

A small, clip-on automatic LED chromatic tuner which works by vibration allowing accurate tuning despite ambient noise.

- Auto detect function displays pitch and name of the note
- Easy to read LED indicators
- Auto power off
- 180° swivel mounting clip



Stock code  
**173.297**

Power supply ..... 1 x CR2032 battery (supplied)  
A4 reference ..... 435Hz - 445Hz  
Tuning range..... 27.5Hz - 1760Hz  
Dimensions..... 54.5 x 60 x 17mm  
Weight..... 30g

### CCT400 MINI CLIP TUNER

Clip contact tuner with black soft-grip finish and LCD needle display with back-light which changes to green when in tune. Modes for Chromatic, Guitar, Bass, Violin and Ukulele.

- One button operation



Stock code  
**173.278**

Power supply ..... 3Vdc (CR2032 button cell)  
Tuning modes ..... Chromatic, Guitar, Bass, Violin and Ukulele  
Tuning range..... A0 (27.5Hz) - A6 (1760Hz)  
Tuning stability..... ±0.5 cent  
A4 frequency..... 440Hz (fixed)  
Dimensions ..... 33 x 53 x 40mm  
Weight..... 22g

### ACT12 AUTO CLIP TUNER

Compact clip tuner with patented auto operation. 4 pressure sensors detect when the tuner is clipped to a surface, such as a guitar headstock, activating the tuner. Removal or inactivity for 5 minutes automatically switches the tuner off. Display is virtual needle type with 3-colour backlight for flat, sharp or in-tune. Accurate and convenient tuning for guitars and other instruments.

- Auto on/off - no buttons needed
- 3 colour backlight indicator
- Auto chromatic tuning



Stock code  
**173.259**

Power supply ..... 3Vdc (1 x CR2032 supplied)  
Tuning ..... Auto chromatic  
Tuning range..... A0 - C8  
Tuning stability..... ±1cent  
Backlight..... Orange (flat), Green (in-tune), Red (sharp)  
Display..... LCD virtual needle with note  
Input..... Piezo contact pickup  
A4 frequency..... 440Hz (fixed)  
Dimensions ..... 30 x 48 x 40mm  
Weight (without battery)..... 22g

### CT64 LED GUITAR & BASS TUNER

Digital guitar and bass guitar auto-tuner with mic or jack input and LED indicators for string number and tuning.



Stock code  
**172.266**

Power supply ..... 3Vdc, 2 x AAA batteries (supplied)  
Inputs..... 6.3mm jack or internal mic  
Accuracy..... ±1.0 cent  
Dimensions ..... 90 x 52 x 15mm  
Weight..... 41g

### CCT60 COLOUR LCD CLIP TUNER

Clip contact tuner with black soft-grip finish and colour LCD screen. Chromatic mode can be set to various keys for wind instruments whilst guitar, bass, violin and ukulele modes can be transposed down to 4 flats.

- 4 tuning keys for wind instruments
- Backlit colour LCD display



Stock code  
**173.284**

Power supply ..... 3Vdc (CR2032 button cell)  
Tuning modes ..... Chromatic, guitar, bass, violin, ukulele  
Tuning range..... A0 (27.5Hz) - A6 (1760Hz)  
Tuning stability..... ±1 cent  
A4 frequency..... 435 - 445Hz  
Key choice..... C, F, Bb, Eb  
Dimensions ..... 100 x 56 x 25mm  
Weight..... 33g (no battery)

### CCT-100 BACKLIT CLIP-ON CHROMATIC TUNER

A clip-on chromatic tuner with built-in contact transducer and microphone. Mode switch for key set and Hz adjustment for concert pitch.

- Backlit LCD displaying clip or mic, note, key, frequency and virtual needle display.
- Backlight changes from red to green when in tune
- Display rotates throughout 360 degrees and tilts to suit viewing angle
- Tuning Modes: Chromatic, Guitar, Bass and Violin (Mandolin)



Stock code  
**173.265**

Power supply ..... 1 x CR2032 battery (supplied)  
Concert A frequency setting..... 430-450Hz  
Tuning modes ..... Chromatic; Guitar; Bass; Violin  
Controls..... On/Off; Key; Up; Down  
Dimensions ..... 53 x 80 x 40mm  
Weight..... 70g

### CT30 GUITAR/CHROMATIC TUNER

Pocket digital tuner with needle style LCD display and 3 LEDs to indicate tuning status. Modes for guitar, bass or chromatic tuning via on-board microphone or 6.3mm jack input with output to amplifier or effects. A rear flip-out tab enables the tuner to be stood up for easier operation.

- Guitar, Bass and Chromatic modes
- Output jack for through connection



Stock code  
**173.287**

Power supply ..... 3Vdc (2 x AAA batteries)  
Input..... Internal mic or 6.3mm jack  
Tuning modes ..... Guitar, Bass and Chromatic (auto)  
Tuning range..... A0 (27.5Hz) - A6 (1760Hz)  
Tuning stability..... ±1 cent  
A4 frequency..... 435 - 445Hz  
Dimensions ..... 95 x 58 x 15mm  
Weight..... 56g (no battery)



**NEW**

**TCH300**  
**TUNER & CHORD COMPUTER**

Pocket tuner with large LCD display and backlight. Tuning mode is guitar, bass or chromatic from the internal mic, jack input or the supplied contact pickup. The pitch generator option plays through rear speaker or headphones with side-mounted volume control. Adjustable A4 frequency from 435-445Hz. An on-board 240 chord library can be selected by root note and type and displayed in a virtual chord box with option to sound each note through the internal speaker or headphone.

- Internal mic or jack input
- Built-in speaker and phones out
- Supplied with clip contact pickup



Stock code  
**173.299**

Power supply .....3Vdc (2 x AAA batteries)  
Input.....Internal mic, 6.3mm jack or contact pickup  
Tuning modes .....Guitar, Bass and Chromatic (auto or manual)  
Tuning range.....A0 (27.5Hz) - A8 (4186.0Hz)

Tuning stability.....±1 cent  
A4 frequency.....435-445Hz  
Tone generator.....A2-A6 chromatic and chord notes  
Dimensions.....110 x 65 x 18mm  
Weight.....103g (no battery)

**MMT2**  
**MULTI-FUNCTION METRO-TUNER**

Metronome and multi-mode tuner with backlit LCD display and 3 LED indicators. The display and indicators work in unison to give a clear indication when the user is "in-tune". Selected note or beat can be produced via the internal speaker or earphone output with volume control. Tuning note is picked up by internal mic, 6.3mm jack input or supplied clip-on contact pick-up.

- Built-in speaker with volume control
- Wired contact pick-up included
- Internal mic and 6.3mm jack input
- Flip-out metal stand on back



Stock code  
**173.275**

Power supply .....3Vdc 2 x AAA battery (supplied)  
Tuning modes .....Chromatic, Guitar, Bass, Violin, Ukulele  
A4 frequency.....430 - 450Hz  
Tuning range.....A0 (27.5Hz) - C8 (4.186kHz)  
Tuning stability.....±1Cent  
Inputs.....Internal mic, 6.3mm jack, included clip-on contact pick-up  
Beat types.....0/4-9/4; crotchet, doublet, triplet, 16ths + 3 combinations  
Tempo range.....30-280 BPM  
Output.....3.5mm earphone jack, internal speaker with volume control  
Dimensions.....101 x 63 x 16mm  
Weight.....71g (no battery)

**NEW**

**MMT3**  
**COLOUR LCD METRO TUNER**

Pocket digital metro tuner with black soft-grip finish and large round full colour LCD display. Tuning modes for guitar, bass, violin, ukulele and chromatic with 3 key options for wind instruments via internal mic, jack input or the supplied contact pickup. The pitch generator option plays through rear speaker or headphones with side-mounted volume control. Adjustable A4 frequency from 430-440Hz. Metronome mode has various beat options and adjustable tempo with audible click through speaker or phones.

- Colour LCD backlit display
- Internal mic or jack input
- Built-in speaker and phones out
- Flip-out stand on back
- Supplied with clip contact pickup



Stock code  
**173.298**

Power supply .....3Vdc (2 x AAA batteries)  
Input.....Internal mic, 6.3mm jack or contact pickup  
Tuning modes .....Guitar, Bass, Violin, Ukulele and Chromatic (auto)  
Tuning range.....A0 (27.5Hz) - A6 (1760.0Hz)  
Tuning stability.....±1 cent  
A4 frequency.....430-450Hz

Key choice .....C, F, Bb, Eb  
Tone generator.....All instruments + chromatic A2-A6  
Beat types.....0/4-9/4; crotchet, doublet, triplet, 16ths + 3 combinations  
Tempo range.....30-250 BPM  
Dimensions.....110 x 65 x 18mm  
Weight.....77g (no battery)

**WMT-820**  
**WIRELESS METRO-TUNER**

Combination metronome/tuner/tone generator/rhythm trainer in a miniature TV-style case. An LCD display with switchable backlight shows virtual tuning or metronome dial and settings and in clock mode, operates as a bedside alarm clock. Supplied with a clip guitar tuner which can operate independently or as a wireless sender to be displayed on the large screen.



- Wireless tuning with on-screen display
- Rhythm trainer with speech engine
- Also serves as an alarm clock

Stock code  
**173.274**

Power supply .....Main unit: 3 x AAA, clip tuner: CR2032  
Tuning modes .....Chromatic, Guitar, Bass, Violin, Ukulele  
Tuning range.....A0(27.5Hz) - C8(4186Hz)  
Accuracy.....±1cent  
Key choice.....C, F, Bb, Eb

Beat types.....0, 1, 2, 3, 4, 5, 6, 7, 8, 9  
Tempo range.....30 - 250bpm  
Tone generator.....A2 - A6  
Dimensions.....86 x 116 x 60mm  
Weight.....174g

**MCM-A4**  
**MINI CLIP-ON METRONOME**

Clip-on mini metronome with integral speaker. A4 (440Hz) reference tone for tuning. 3 modes - metronome, pitch and clock. Controls for tempo and beat type.

- Internal speaker and earphone output with volume control.

Power supply ...1 x CR2032 battery (supplied)  
Controls.....On/Off/Mode; Beat; Up; Down  
Tempo range.....30-250 BPM  
Beat types.....-4: 1/4; 2/4; 3/4; 4/4; 5/4; 3/8; 4/8; 5/8; 6/8; 7/8; 8/8; 9/8  
Tuning range.....A4 (440Hz)  
Dimensions.....56 x 52 x 15mm  
Weight.....70g

Stock code  
**173.267**



**WSM-001A**  
**DIGITAL INTELLIGENT METRONOME**

A compact multi-functional metronome with LCD display.

- Volume control and integral speakers
- Tempo range: 40 - 208 bpm (Largo to Prestissimo)
- Beat: 0, 1, 2, 3, 4, 5 (3+2), 5 (2+3) or 6
- Tone generator: C, D, E, F, G, A, B
- Supplied with earpiece

Power supply ...2 x AAA batteries (supplied)  
A4 reference .....440Hz  
Dimensions.....62 x 94 x 15mm  
Weight.....80g

Stock code  
**173.270**



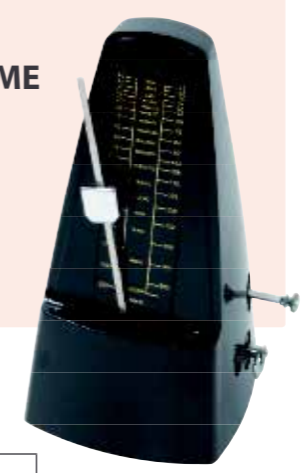
**MM1-B**  
**MECHANICAL METRONOME**

Mechanical metronome in a tough plastic housing with clockwork mechanism. Adjustable pendulum weight can be set to pre-notched tempos and a bell can be set to various beat counts.

- High quality metal mechanism
- Traditional beat demonstration
- 40-208 bpm

Tolerance.....<1%  
Dimensions.....118 x 206 x 104mm  
Weight.....470g

Stock code  
**173.315**



**PM2-T**  
**TEAK STYLE PYRAMID METRONOME**

A clockwork mechanism is adjustable via a pendulum weight with pre-notched tempos and a bell can be set to various beat counts.

- Traditional design
- Bar count bell
- Pendulum retainer and cover

Tolerance.....<1%  
Dimensions.....115 x 215 x 115mm  
Weight.....521g

Stock code  
**173.317**



**GUITAR PITCH PIPES**



Stock code	Model number
<b>173.260</b>	PITCH6

Notes .....1E, 2B, 3G, 4D, 5A, 6E  
Dimensions.....10 x 65 x 50mm  
Weight.....17g

**TUNING FORKS**



Stock code	Model number	Note
<b>173.257</b>	TF-A	A 440Hz
<b>173.258</b>	TF-C	C 523.3Hz

Dimensions.....16 x 120 x 7mm  
Weight.....30g



**WCP-55**  
**STANDARD PICK-UP**

• 6.3mm moulded plug



Stock code  
**173.318**

Cable ..... 2mmØ x 2.5m  
Opening width ..... 25mm

**KQ-1A**  
**LOW PROFILE PICK-UP**

• 6.3mm jack plug



Stock code  
**173.320**

Cable length ..... 3.0m  
Soundhole diameter ..... 105mm ± 10%

**WCP-60G**  
**GUITAR PICK-UP**

• Moulded 6.3mm jack plug



Stock code  
**173.321**

Cable ..... 2mmØ x 2.4m

**WCP-60V**  
**VIOLIN PICK-UP**

• Moulded 6.3mm jack plug



Stock code  
**173.324**

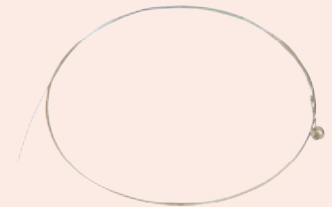
Cable ..... 2mmØ x 2.4m

Guitar Strings	Stock code	Model	For:	Version	Strings in set	Description	Note	Diameter
	173.190	BG4095	Bass Guitar	Light, 40-95	4	Copper wound	1G	0.040" 1.02mm
							2D	0.060" 1.52mm
							3A	0.075" 1.91mm
							4E	0.095" 2.41mm
	173.193	BG45105	Bass Guitar	Medium, 45-105	4	Nickel wound	1G	0.045" 1.14mm
							2D	0.065" 1.65mm
							3A	0.085" 2.16mm
							4E	0.105" 2.67mm
	173.196	BG45130	Bass Guitar	Medium, 45-130	5	Nickel wound	1G	0.045" 1.14mm
							2D	0.065" 1.65mm
							3A	0.085" 2.16mm
							4E	0.105" 2.67mm
							5B	0.130" 3.29mm
	173.189	AB4095	Acoustic Bass Guitar	40-95	4	Nickel wound	1G	0.040" 1.02mm
							2D	0.060" 1.52mm
							3A	0.075" 1.91mm
							4E	0.095" 2.41mm
	173.172	WG1152	Acoustic Guitar	Extra light, 11-52	6	85/15 bronze wound	1E	0.011" 0.28mm
							2B	0.015" 0.38mm
							3G	0.024" 0.61mm
							4D	0.032" 0.81mm
							5A	0.042" 1.07mm
							6E	0.052" 1.32mm
	173.175	WG1253	Acoustic Guitar	Light, 12-53	6	85/15 bronze wound	1E	0.012" 0.30mm
							2B	0.016" 0.41mm
							3G	0.024" 0.61mm
							4D	0.032" 0.81mm
							5A	0.042" 1.07mm
							6E	0.053" 1.35mm
	173.166	CGS-NT	Classical Guitar	Normal tension, 28-43	6	Nylon, silver-plated copper wound	1E	0.028" 0.71mm
							2B	0.032" 0.81mm
							3G	0.040" 1.02mm
							4D	0.030" 0.76mm
							5A	0.035" 0.89mm
							6E	0.043" 1.09mm
	173.169	CGS-HT	Classical Guitar	High tension, 28.5-44	6	Nylon, silver-plated copper wound	1E	0.0285" 0.72mm
							2B	0.0325" 0.83mm
							3G	0.041" 1.04mm
							4D	0.030" 0.76mm
							5A	0.036" 0.91mm
							6E	0.044" 1.12mm

Guitar Strings	Stock code	Model	For:	Version	Strings in set	Description	Note	Diameter
	173.178	EG0942	Electric Guitar	Super light, 9-42	6	Stainless steel, nickel wound	1E	0.009" 0.23mm
							2B	0.011" 0.28mm
							3G	0.016" 0.41mm
							4D	0.024" 0.61mm
							5A	0.032" 0.81mm
							6E	0.042" 1.07mm
	173.181	EG1046	Electric Guitar	Custom light, 10-46	6	Stainless steel, nickel wound	1E	0.011" 0.28mm
							2B	0.014" 0.36mm
							3G	0.018" 0.46mm
							4D	0.028" 0.71mm
							5A	0.038" 0.97mm
							6E	0.049" 1.24mm
	173.184	EG1149	Electric Guitar	Light, 11-49	6	Stainless steel, nickel wound	1E	0.010" 0.25mm
							2B	0.013" 0.33mm
							3G	0.017" 0.43mm
							4D	0.026" 0.66mm
							5A	0.036" 0.91mm
							6E	0.046" 1.17mm
	173.170	UKS4-BK	Ukulele	Black	4	Nylon	1A	0.022" 0.56mm
							2E	0.028" 0.71mm
							3C	0.032" 0.81mm
							4G	0.022" 0.56mm
	173.171	UKS4-CL	Ukulele	Clear	4	Nylon	1A	0.022" 0.56mm
							2E	0.028" 0.71mm
							3C	0.032" 0.81mm
							4G	0.022" 0.56mm
	173.185	MDS8-M	Mandolin/Banjolin	Light, 11-40	4	Silver-plated, copper alloy wound	1E	0.010" 0.25mm
							2A	0.014" 0.36mm
							3D	0.024" 0.61mm
							4G	0.034" 0.86mm
	173.188	BJ55-L	G-Banjo	Light, 9-20	5	Copper alloy wound	1D	0.009" 0.23mm
							2B	0.011" 0.28mm
							3G	0.013" 0.33mm
							4C	0.020" 0.51mm
							5G	0.009" 0.23mm
	173.187	VLS4	Violin	Standard, 10-30	4	Stainless steel, nickel chromium wound	1E	0.010" 0.25mm
							2A	0.014" 0.36mm
							3D	0.020" 0.52mm
							4G	0.030" 0.75mm

**GUITAR STRINGS - SINGLE GAUGE PACKS OF 10**

**PLAIN STEEL**



Stock code	Model number	Gauge
174.009	009P	0.009" (0.23mm)
174.010	010P	0.010" (0.25mm)
174.011	011P	0.011" (0.28mm)
174.012	012P	0.012" (0.30mm)
174.013	013P	0.013" (0.33mm)
174.014	014P	0.014" (0.36mm)
174.015	015P	0.015" (0.38mm)
174.016	016P	0.016" (0.41mm)
174.017	017P	0.017" (0.43mm)
174.018	018P	0.018" (0.46mm)

**NICKEL WOUND**



Stock code	Model number	Gauge
174.024	024NW	0.024" (0.61mm)
174.026	026NW	0.026" (0.66mm)
174.028	028NW	0.028" (0.71mm)
174.032	032NW	0.032" (0.81mm)
174.036	036NW	0.036" (0.91mm)
174.038	038NW	0.038" (0.97mm)
174.042	042NW	0.042" (1.07mm)
174.046	046NW	0.046" (1.17mm)
174.049	049NW	0.049" (1.24mm)

**BRONZE WOUND**



Stock code	Model number	Gauge
174.064	024BW	0.024" (0.61mm)
174.072	032BW	0.032" (0.81mm)
174.082	042BW	0.042" (1.07mm)
174.092	052BW	0.052" (1.32mm)

Most items in this catalogue are stocked.

Just search a code on our website. If not listed, feel free to make an inquiry.





### GUITAR STRAPS

Adjustable length up to 1.35m

Width..... 50mm

Stock code	Model number	Design
173.004	STP-B1	Standard
173.006	STP-W1	Western style

### NYLON WEBBING PATTERN GUITAR STRAPS

Adjustable webbing guitar straps with synthetic leather fobs printed with designs unique to Chord.

Minimum Length ..... 1000mm  
 Maximum Length ..... 1750mm  
 Dimensions ..... 60 x 20 x 1750mm  
 Weight..... 100g

Stock code	Model number	Design
173.051	STP-BP1	Ball Python
173.052	STP-RW2	Razor Wire
173.053	STP-LN3	Lightning
173.054	STP-CF4	Camouflage
173.055	STP-DNA	DNA
173.056	STP-WAVES	Waves
173.058	STP-DAZZLE	Dazzle Camo
173.059	STP-SPINE	Spine
173.060	STP-ROSES	Roses
173.061	STP-DROPLETS	Droplets
173.062	STP-FLAMES	Flames
173.063	STP-LIPSTICK	Lipstick

### HEAVY DUTY LEATHER GUITAR STRAPS

Adjustable length and bootlace for neck attachment.

Stock code	Model number	Style
173.142	STP-LNT1	Beige suede
173.145	STP-LBK1	Black suede
173.148	STP-LRD2	Black & red polished
173.151	STP-LBR1	Black polished



• Length adjustable up to 1.3m • 65mm wide

• Length adjustable up to 1.35m • 70mm wide

• Length adjustable up to 1.3m • 75mm wide

• Length adjustable up to 1.4m • 70mm wide

### REPTILIAN GUITAR STRAPS

A nylon webbing extension enables length adjustment as preferred and each end is fitted with a quick-release clip for convenience.

- Wide shoulder strap for comfort



Material..... Vinyl, faux leather & nylon  
 Width..... 60mm (extension - 35mm)  
 Strap length..... 1160 - 1340mm

Stock code	Model number	Colour
174.861	STP-RP4	Brown
174.862	STP-RP5	Red
174.863	STP-RP6	Bronze

### ANIMAL STRIPE GUITAR STRAPS

Length is adjustable via a loop-through extension on the end which attaches to the rear of the guitar. Faux leather fobs add strength to attach to the guitar strap buttons.



Material..... Vinyl, faux leather & faux fur  
 Strap length..... 940 - 1320mm  
 Width..... 65mm

Stock code	Model number	Style
174.854	STP-AN1	Brown
174.855	STP-AN2	Zebra

### STUDED GUITAR STRAP

Adjustable faux leather guitar strap with 2 rows of metal pyramid studs fitted to upper side.

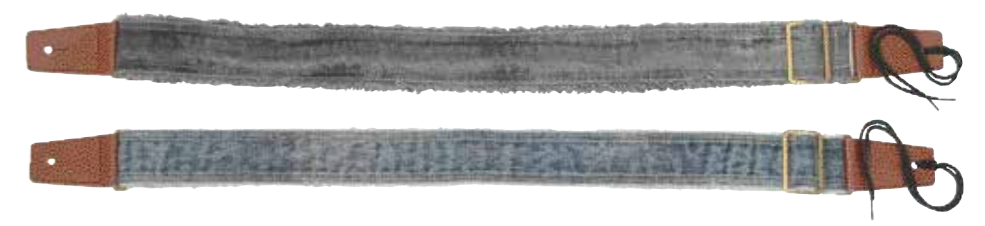


Material..... Faux leather (plated steel studs)  
 Strap length..... 920 - 1280mm  
 Width..... 63mm

Stock code	Model number
174.856	STP-ST2

### WORN DENIM GUITAR STRAPS

Adjustable worn denim guitar straps with brass adjustment loop and faux leather fobs.



Material..... Denim cotton & faux leather  
 Strap length..... 850 - 1470mm  
 Width..... 50mm

Stock code	Model number	Colour
174.858	STP-WD1	Black
174.859	STP-WD2	Blue

- Length adjustable
- Double stitched with frayed edges

### EXTRA LONG GUITAR STRAP

Black faux leather guitar strap in 3 sections, adjustable via 2 rows of eyelets to over 1.5m length.

- Durable faux leather material



Material..... Faux leather  
 Strap length..... 800-1540mm  
 Width..... 50mm

Stock code	Model number
174.857	STP-XL2



## PLECTRUMS

Classic heart shaped plectrums available in 3 materials and 5 thicknesses.

### GLOSS POM PLECTRUMS



Stock code	Model number	Gauge
174.905	PIC-GXL-10	X Light, 10pcs
174.900	PIC-GXL-50	X Light, 50pcs
174.906	PIC-GL-10	Light, 10pcs
174.901	PIC-GL-50	Light, 50pcs
174.907	PIC-GM-10	Medium, 10pcs
174.902	PIC-GM-50	Medium, 50pcs
174.908	PIC-GMH-10	Heavy, 10pcs
174.903	PIC-GMH-50	Heavy, 50pcs
174.909	PIC-GH-10	X Heavy, 10pcs
174.904	PIC-GH-50	X Heavy, 50pcs

### DRY GRIP PLECTRUMS



Stock code	Model number	Gauge
174.915	PIC-DXL-10	X Light, 10pcs
174.910	PIC-DXL-50	X Light, 50pcs
174.916	PIC-DL-10	Light, 10pcs
174.911	PIC-DL-50	Light, 50pcs
174.917	PIC-DM-10	Medium, 10pcs
174.912	PIC-DM-50	Medium, 50pcs
174.918	PIC-DMH-10	Heavy, 10pcs
174.913	PIC-DMH-50	Heavy, 50pcs
174.919	PIC-DH-10	X Heavy, 10pcs
174.914	PIC-DH-50	X Heavy, 50pcs

### NYLON GRIP PLECTRUMS



Stock code	Model number	Gauge
174.925	PIC-NXL-10	X Light, 10pcs
174.920	PIC-NXL-50	X Light, 50pcs
174.926	PIC-NL-10	Light, 10pcs
174.921	PIC-NL-50	Light, 50pcs
174.927	PIC-NM-10	Medium, 10pcs
174.922	PIC-NM-50	Medium, 50pcs
174.928	PIC-NMH-10	Heavy, 10pcs
174.923	PIC-NMH-50	Heavy, 50pcs
174.929	PIC-NH-10	X Heavy, 10pcs
174.924	PIC-NH-50	X Heavy, 50pcs

## ASSORTED GUITAR PLECTRUMS - 600 PIECES

A box of guitar plectrums, also known as guitar picks. Various gauges from 0.46mm to 1.5mm in a classic teardrop shape, separated in six individual compartments. Each set of picks come in a wide range of colours and patterns.



- Supplied in a plastic box with 6 compartments
- Various gauges and patterns

Gauge ..... 0.46/0.71/0.81/0.96/1.20/1.50mm  
Dimensions ..... 235 x 130 x 40mm

Stock code	Model number
173.007	600PICKS

## PICK HOLDER

Silvered plastic holder for plectrums with spring loaded retainer and self-adhesive backing.



Stock code	Model number
174.992	PH2

Dimensions ..... 32 x 36 x 11mm  
Weight ..... 10g

## PICK STRIP

Rubber strip for mounting to a microphone stand with a slit for gripping plectrums, keeping them close at hand for quick access.



Stock code	Model number
174.990	RPG7

Dimensions ..... 18 x 183 x 26mm  
Weight ..... 78g

## Guitar capos on page 31



## Harmonicas

Professional blues and chromatic harmonicas available in many keys for accompaniment to all pieces of music.

### BLUES TEN HARMONICA

10-hole, 20-note diatonic harmonica with spring copper alloy reed plate and plated pressed steel cover plates. Suitable for blues playing when key is selected a perfect fourth above the accompanying instruments.

- Removable plates for cleaning and servicing
- Supplied in a sturdy plastic case with cleaning cloth



Dimensions ..... 104 x 21 x 29mm  
Weight ..... 700g

Stock code	Model number	Key	Blues cross key
174.683	BLUES10-C	C	G
174.687	BLUES10-E	E	B
174.688	BLUES10-F	F	C
174.689	BLUES10-F#	F#	C#
174.690	BLUES10-G	G	D
174.691	BLUES10-G#	G#	D#

Stock code	Model number	Key	Blues cross key
174.684	BLUES10-C#	C#	G#
174.685	BLUES10-D	D	A
174.686	BLUES10-D#	D#	A#
174.680	BLUES10-A	A	E
174.681	BLUES10-A#	A#	F
174.682	BLUES10-B	B	F#

### CHROMA TWELVE HARMONICA

Professional 12 hole, 48 note chromatic harmonica with spring copper alloy reed plate and plated pressed steel cover plates, removable for cleaning and servicing.

- Precision slide for accurate sharps and flats
- Supplied in a sturdy plastic case with cleaning cloth
- Key of C



Dimensions ..... 43 x 160 x 30mm  
Weight ..... 194g

Stock code	Key
174.692	C major

## BLUES TEN

### HARMONICAS - SET OF 12

Set of 12 Chord Blues Ten diatonic harmonicas in every possible key to allow accompaniment to all pieces of music. Supplied in a bespoke fabric and hard foam zip case with individual harmonica compartments in a soft, plush interior.

- Comprehensive set of keys



Key choice ..... A / A# / B / C / C# / D / D# / E / F / F# / G / G#  
Dimensions ..... 270 x 80 x 210mm  
Weight ..... 1.21kg

Stock code
174.697

## HNH1

### HARMONICA HOLDER

Spring bar clamp with adjustable neck hoop for holding a harmonica in position for hands-free playing.



Dimensions ..... 220 x 210 x 20mm  
Weight ..... 140g

Stock code
174.699

## BLUESJR

### MINI KEYRING HARMONICA

Keyring with fully working 4-hole 8-note miniature diatonic "blues" harmonica in key of C.

- Fully working harmonica
- Cool gadget appeal



Dimensions ..... 38 x 13 x 9mm  
Weight ..... 10g

Stock code
174.695