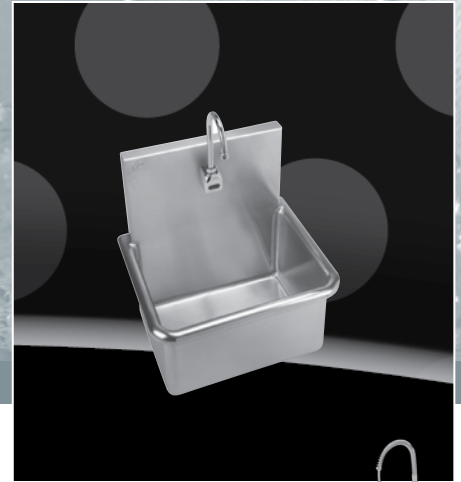


C O M P R E H E N S I V E S P E C I F I C A T I O N
R E F E R E N C E G U I D E

Institutional Application Sinks, Faucets and Accessories



JUST...the stainless source for spec series sinks

j u s t m a n u f a c t u r i n g
j u s t m f g . c o m



INSTITUTIONAL APPLICATION SINKS, FAUCETS AND ACCESSORIES - CONTENTS

	Just Production Facilities	3		Government Scullery - MN Style	15
	Large Capacity Drop-in Sinks	4		Wash-Up Sinks	16-17
	ADA Compliant	5		Laundry Tubs - Mop Sinks	18
	Island Sink Tops	6		V.A. Hospital Applications	19
	Art Room Sinks-Faucets	7		Laundry Tubs - Mop Sinks	20
	Handwash Sinks	8		ADA Compliant	21-22
	ADA Compliant Lavatories	11		Custom Counters	23-24
	Lavatories	12		Marquis Sink Tops - Cup Sinks	25
	NSF Certified - Sculleries	13		Sacristy Sinks	26
	Square Corner - Sculleries	14		Index	27

Just Stainless Steel Sinks on the World Wide Web at www.justmfg.com



JUST MANUFACTURING COMPANY		9233 KING STREET	FRANKLIN PARK	ILLINOIS	60131
PH: 847.678.5150	FAX: 847.678.6817	EMAIL: CUSTSERV@JUSTMFG.COM		WEBSITE: WWW.JUSTMFG.COM	



JUST PRODUCTION FACILITIES

JUST Manufacturing has been producing commercial grade plumbing products for over 75 years. A commitment to product innovation and manufacturing efficiencies make **JUST** a preferred brand among specifying professionals.



Modern production facilities and computer-aided manufacturing processes are just part of the reason JUST is an established leader.

Raw Materials are an important part of the quality equation.

GAUGES:

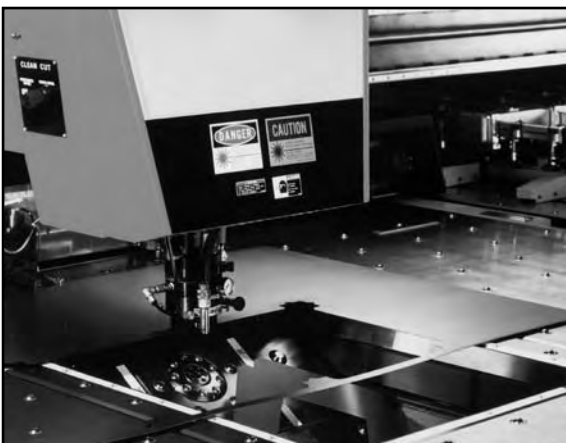
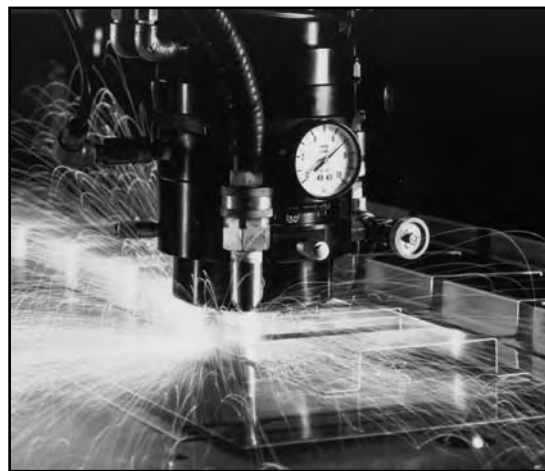
Standard gauge ranges are 14 ga. through 20 ga. depending on the product group.

TYPE:

Type 304 is standard for most product groups. Type 316 available upon request on most models.

FINISH:

All products are given a Hand-Blended Just Finish that stands up to years of use.



JUST's "Full line" product offering is the broadest in the industry and is complemented by wide ranging custom capabilities. The breadth of product line includes institutional grade sculleries, NSF Certified and square corner types, wall-hung lavatories, hand wash sinks, sink tops, drinking fountains, mop sinks and a variety of market specific fixtures and related products.

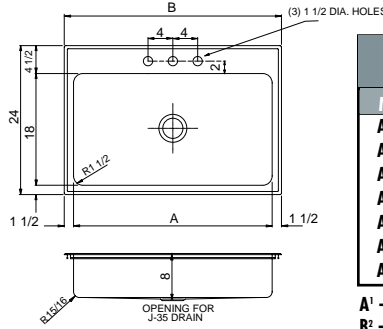
INSTITUTIONAL GRADE LARGE CAPACITY STYLIST DROP-IN SINKS

**NEW
PRODUCT GROUP!**

ARB SERIES STAINLESS STEEL SINK

Constructed of 18 gauge, type 304 stainless steel • Faucet flange at rear of compartment • Interior and top surfaces polished to a non-porous Hand-Blended Just Finish • Smooth fully coated underside insulates for sound and reduces condensation • Straight-sided compartment with 1-1/2" radius corners provides greater capacity • Self-rimming top mount Grip-Rim Plus with stainless steel mounting channels • Drain punch #35 center rear for Just J-35 unless otherwise specified.

Includes: J-1174-KS faucet, and J-35-SSF drain system.



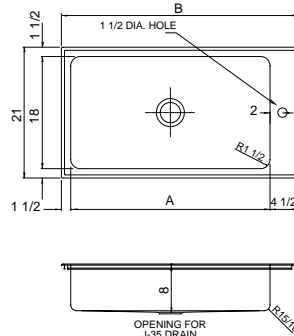
ARB-SERIES - DROP-IN SINKS LEDGE REAR			
Model No.	A ¹	B ²	Depth
ARB-2435-A-GR-T	32	35	8
ARB-2437-A-GR-T	34	37	8
ARB-2443-A-GR-T	40	43	8
ARB-2445-A-GR-T	42	45	8
ARB-2451-A-GR-T	48	51	8
ARB-2457-A-GR-T	54	57	8
ARB-2463-A-GR-T	60	63	8

A¹ - Inside Width
B² - Overall Width

ARR SERIES STAINLESS STEEL SINK

Constructed of 18 gauge, type 304 stainless steel • Faucet flange to right of compartment • Interior and top surfaces polished to a non-porous Hand-Blended Just Finish • Smooth fully coated underside insulates for sound and reduces condensation • Straight-sided compartment with 1-1/2" radius corners provides greater capacity • Self-rimming top mount Grip-Rim Plus with stainless steel mounting channels • Drain punch #35 center rear for Just J-35 unless otherwise specified.

Includes: JPR-501 pre-rinse faucet, and J-35-SSF drain system.



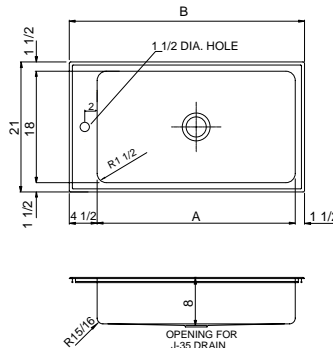
ARR-SERIES - DROP-IN SINKS LEDGE RIGHT			
Model No.	A ¹	B ²	Depth
ARR-2138-A-GR-T	32	38	8
ARR-2140-A-GR-T	34	40	8
ARR-2146-A-GR-T	40	46	8
ARR-2148-A-GR-T	42	48	8
ARR-2154-A-GR-T	48	54	8
ARR-2160-A-GR-T	54	60	8
ARR-2166-A-GR-T	60	66	8

A¹ - Inside Width
B² - Overall Width

ARL SERIES STAINLESS STEEL SINK

Constructed of 18 gauge, type 304 stainless steel • Faucet flange to left of compartment • Interior and top surfaces polished to a non-porous Hand-Blended Just Finish • Smooth fully coated underside insulates for sound and reduces condensation • Straight-sided compartment with 1-1/2" radius corners provides greater capacity • Self-rimming top mount Grip-Rim Plus with stainless steel mounting channels • Drain punch #35 center rear for Just J-35 unless otherwise specified.

Includes: JPR-501 pre-rinse faucet, and J-35-SSF drain system.



ARL-SERIES - DROP-IN SINKS LEDGE LEFT			
Model No.	A ¹	B ²	Depth
ARL-2138-A-GR-T	32	38	8
ARL-2140-A-GR-T	34	40	8
ARL-2146-A-GR-T	40	46	8
ARL-2148-A-GR-T	42	48	8
ARL-2154-A-GR-T	48	54	8
ARL-2160-A-GR-T	54	60	8
ARL-2166-A-GR-T	60	66	8

A¹ - Inside Width
B² - Overall Width

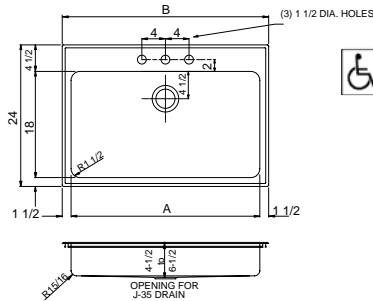


INSTITUTIONAL GRADE LARGE CAPACITY ADA COMPLIANT DROP-IN SINKS

**NEW
PRODUCT GROUP!**

ARB-ADA SERIES STAINLESS STEEL SINK

Constructed of 18 gauge, type 304 stainless steel • Faucet flange at rear of compartment
 • Interior and top surfaces polished to a non-porous Hand-Blended Just Finish • Smooth fully coated underside insulates for sound and reduces condensation • Straight-sided compartment with 1-1/2" radius corners provides greater capacity • Self-rimming top mount Grip-Rim Plus with stainless steel mounting channels • Drain punch #35 center rear for Just J-35 unless otherwise specified.
Includes: J-1174-KS faucet, and J-35-SSF drain system.

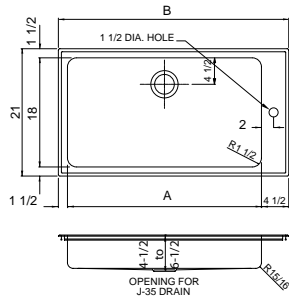


ARB-ADA SERIES - ADA COMPLIANT DROP-IN SINKS LEDGE REAR			
Model No.	A ¹	B ²	Depth
ARB-ADA-2435-A-GR-T	32	35	4-1/2 to 6-1/2
ARB-ADA-2437-A-GR-T	34	37	4-1/2 to 6-1/2
ARB-ADA-2443-A-GR-T	40	43	4-1/2 to 6-1/2
ARB-ADA-2445-A-GR-T	42	45	4-1/2 to 6-1/2
ARB-ADA-2451-A-GR-T	48	51	4-1/2 to 6-1/2
ARB-ADA-2457-A-GR-T	54	57	4-1/2 to 6-1/2
ARB-ADA-2463-A-GR-T	60	63	4-1/2 to 6-1/2

A¹ - Inside Width
 B² - Overall Width

ARR-ADA SERIES STAINLESS STEEL SINK

Constructed of 18 gauge, type 304 stainless steel • Faucet flange to right of compartment • Interior and top surfaces polished to a non-porous Hand-Blended Just Finish • Smooth fully coated underside insulates for sound and reduces condensation
 • Straight-sided compartment with 1-1/2" radius corners provides greater capacity • Self-rimming top mount Grip-Rim Plus with stainless steel mounting channels • Drain punch #35 center rear for Just J-35 unless otherwise specified.
Includes: JPR-501 pre-rinse faucet, and J-35-SSF drain system.

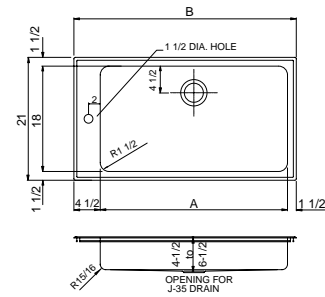


ARR-SERIES - ADA COMPLIANT DROP-IN SINKS LEDGE RIGHT			
Model No.	A ¹	B ²	Depth
ARR-ADA-2138-A-GR-T	32	38	4-1/2 to 6-1/2
ARR-ADA-2140-A-GR-T	34	40	4-1/2 to 6-1/2
ARR-ADA-2146-A-GR-T	40	46	4-1/2 to 6-1/2
ARR-ADA-2148-A-GR-T	42	48	4-1/2 to 6-1/2
ARR-ADA-2154-A-GR-T	48	54	4-1/2 to 6-1/2
ARR-ADA-2160-A-GR-T	54	60	4-1/2 to 6-1/2
ARR-ADA-2166-A-GR-T	60	66	4-1/2 to 6-1/2

A¹ - Inside Width
 B² - Overall Width

ARL-ADA SERIES STAINLESS STEEL SINK

Constructed of 18 gauge, type 304 stainless steel • Faucet flange to left of compartment • Interior and top surfaces polished to a non-porous Hand-Blended Just Finish • Smooth fully coated underside insulates for sound and reduces condensation
 • Straight-sided compartment with 1-1/2" radius corners provides greater capacity • Self-rimming top mount Grip-Rim Plus with stainless steel mounting channels • Drain punch #35 center rear for Just J-35 unless otherwise specified.
Includes: JPR-501 pre-rinse faucet, and J-35-SSF drain system.



ARL-SERIES - ADA COMPLIANT DROP-IN SINKS LEDGE LEFT			
Model No.	A ¹	B ²	Depth
ARL-ADA-2138-A-GR-T	32	38	4-1/2 to 6-1/2
ARL-ADA-2140-A-GR-T	34	40	4-1/2 to 6-1/2
ARL-ADA-2146-A-GR-T	40	46	4-1/2 to 6-1/2
ARL-ADA-2148-A-GR-T	42	48	4-1/2 to 6-1/2
ARL-ADA-2154-A-GR-T	48	54	4-1/2 to 6-1/2
ARL-ADA-2160-A-GR-T	54	60	4-1/2 to 6-1/2
ARL-ADA-2166-A-GR-T	60	66	4-1/2 to 6-1/2

A¹ - Inside Width
 B² - Overall Width

ADA Compliant

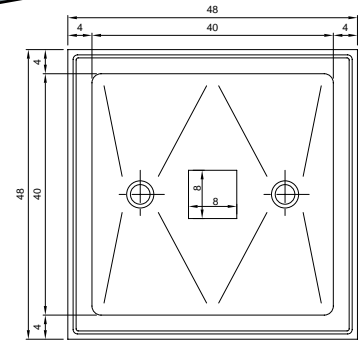
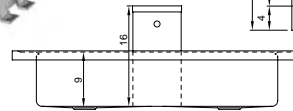


ACADEMIC/LAB ISLAND SINK TOPS

**NEW
PRODUCT GROUP!**

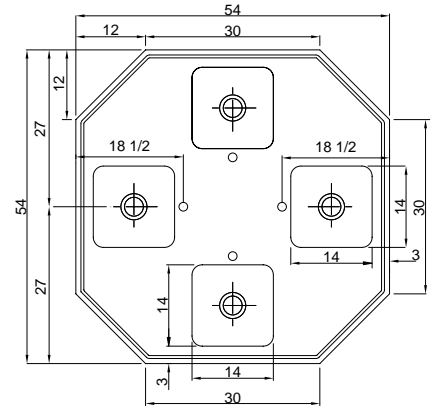
TST-48 WORK ROOM SINK ISLAND / PENINSULA

Seamless welded construction. Top, bowl and turret of 16 gauge type 304 stainless steel. Wide wood frame for cabinet mounting. Top and bowls to have a non-porous Hand-Blended Just Finish. Fully coated underside insulates for sound, and reduces condensation. Straight-sided compartment with 1-1/2" radius corners provides greater capacity. Drain punch #35 for Just J-35. **Includes: Four (4) JFVC-301 dual foot pedal valves with JS-10 spouts, and (2) J-35-SSF drains. (Cabinet not included.)**



QST-54 FOUR USER ISLAND / PENINSULA

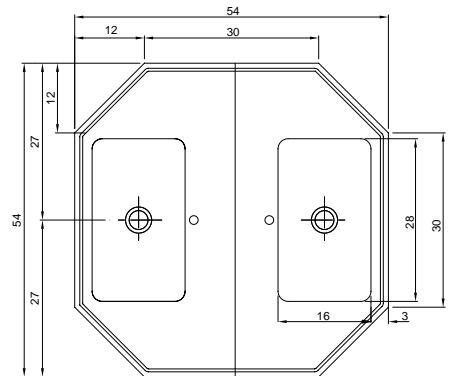
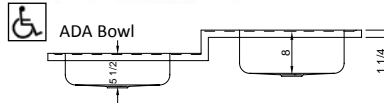
Island sink top. Each corner on 45 degree angle to provide additional work space. Seamless welded construction. Top of 16 gauge type 304 stainless steel. Four 18 gauge type 304 stainless steel bowls seamless welded into top. Wide wood frame for cabinet mounting. Top and bowls to have a non-porous Hand-Blended Just Finish. Fully coated underside insulates for sound, and reduces condensation. Straight-sided compartment with 1-1/2" radius corners provides greater capacity. Drain punch #35 centered for Just J-35. **Includes: Four (4) JSFVR-5 stainless steel faucets and (4) J-35-SSF drains.**



Available as ADA compliant. Specify as ADA 4-1/2 to 6-1/2 depth and note drain location.

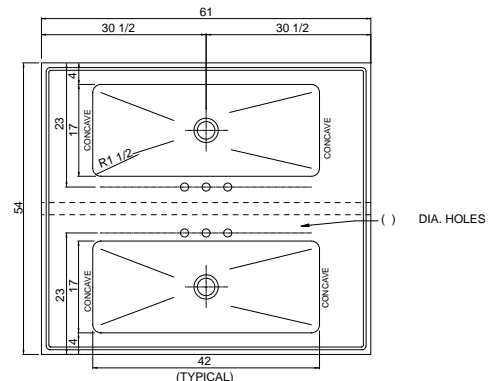
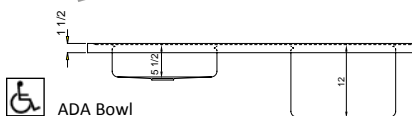
SPLT-54 ISLAND / PENINSULA SPLIT LEVEL - ADA COMPLIANT STAINLESS STEEL COUNTER

Two level stainless steel sink top. Lower level mounts for use at 34" AFF, bowl depth to be 5-1/2". Upper level mounts for user at 38" AFF, bowl depth to be 8". Seamless welded construction. Top of 16 gauge type 304 stainless steel. Bowls of 18 gauge type 304 stainless steel. Standard understructural braces of 16 gauge mild steel. Wide wood frame for cabinet mounting. Top and bowls to have a non-porous Hand-Blended Just Finish. Fully coated underside insulates for sound, and reduces condensation. Straight-sided compartment with 1-1/2" radius corners provides greater capacity. Drain punch #35 centered for Just J-35. **Includes: Two (2) JSFVR-5 stainless steel faucets and (2) J-35-SSF drains.**



STI-6154-42 ART ROOM - ADA COMPLIANT ISLAND / PENINSULA

Seamless welded construction. Top of 16 gauge type 304 stainless steel. Bowls of 18 gauge type 304 stainless steel. Standard understructural braces of 16 gauge mild steel. Wide wood frame for cabinet mounting. Top and bowls to have a non-porous Hand-Blended Just Finish. Fully coated underside insulates for sound, and reduces condensation. Straight-sided compartment with 1-1/2" radius corners provides greater capacity. Drain punch #35 centered for Just J-35. **Includes: Two (2) J-1174-R faucets, (2) J-35-SSF drains and (2) Soap dispensers.**





ACADEMIC ART ROOM SINK TOP

SPDT-6130-42 ART ROOM STAINLESS STEEL COUNTER WITH BACKSLASH

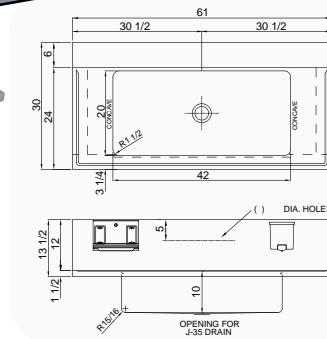
Seamless welded construction. Top of 16 gauge type 304 stainless steel. Bowl of 18 gauge type 304 stainless steel. Wide wood frame for cabinet mounting. Top and bowls to have a non-porous Hand-Blended Just

Finish. Fully coated underside insulates for sound, and reduces condensation. Straight-sided compartment with 1-1/2" radius corners provides greater capacity. Drain punch #35 centered for Just J-35.

Includes: JS-47-TGSA gooseneck faucet, high impact resistant ABS Soap dispenser with 40 fl. oz. capacity, satin finish stainless steel C-fold paper towel dispenser to hold 200 paper towels, and J-35-FS drain.



NEW PRODUCT GROUP!



Available as ADA compliant. Specify as ADA 4-1/2 to 6-1/2 depth and note drain location.

COMMERCIAL GRADE FAUCETS

JSL-46-AC or B Sensor Operated Faucet with Control Module

AB 1953 Compliant

Sensor-operated backsplash mounted faucet. PVD chrome finished solid brass construction faucet body. Spout 12-3/4" high from bottom of base (8-3/4" from base to aerator) with 5-3/8" reach. Laminar flow 2.0GPM aerator.

Control module AC vandal resistant with armored control/power cable. Power adapter, standard plug-in type, provides 12V DC output. Slow closing solenoid valve, piston-operated, provides reliable smooth operation without water hammer. In-line filter with clean-out trap. Sensor range adjustable from 6" to 30". Automatic time-out feature adjustable from 0 (preset-active until no activity sensed) up to 60 seconds in 15 second intervals. Shut-off delay adjustable to 0, 1(preset), 2, 4 or 8 seconds.

Battery powered unit available. Specifications same as above, except provides 6V DC and includes battery holder for four AA batteries in lieu of plug-in power adapter.



JSFVR-5 Stainless Steel

AB 1953 Compliant



Deck mounted single handle ADA Compliant faucet. Features include **type 304 stainless steel body**, spout, handle and supply pipe and ceramic disc cartridge. Polished stainless mirror finish. Aerator integral to spout and vandal resistant. Aerator removable with proprietary faucet wrench. Deck to top of spout 14". Deck to aerator 9-3/4".



JPR-501 Pre-Rinse Faucet

AB 1953 Compliant

NEW!

Single hole heavy cast body with spring action gooseneck. Quarter turn ceramic disc cartridge. Brushed nickel finish. Heavy duty magnetic hose mount holds the spray head securely in place for hand washing use. Supplied with stainless steel braided hose and 20.5" reach. Overall 20.5" height. 7.5" bottom of spray valve to centerline of faucet body.



JS-45-TGA

AB 1953 Compliant

Gooseneck faucet with 3-1/2" reach, and measures 5-1/2" from inlet centerline to top of spout. (4" O.C. supply).



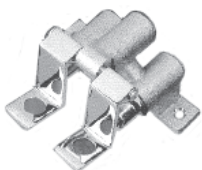
JS-47-TGSA

AB 1953 Compliant

Backsplash mounted gooseneck faucet and aerator, with 4-1/16" spout reach. 10-3/16" from inlet centerline to top of spout (8" O.C. supply). PVD chrome finish.



JFVC-301



Floor mounted dual pedal operated self closing foot valves. 1/2" inlets on 1-1/4" centers. Polished chrome pedals with rough chrome valve body. 1/2" outlet.

J-15-FS



Chrome plated brass drain with flat grid strainer. 1-1/2" O.D. chrome plated tailpiece, 4" long.

JTN-150

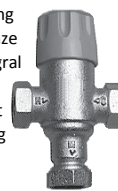


P-Trap Solid, non adjustable cast brass P-trap with brass slip nut. Hex head cleanout to have neoprene O-ring and top to be flush with inside bottom of J-bend.

JTM47 Thermostatic Mixing Valve

AB 1953 Compliant

Anti-Scald mixing valve with bronze body with integral check valves and adjustment cap with locking feature. 1/2" threaded union inlet and outlet connections. Temperature range from 60 to 120 F (16 C to 49 C). ASSE Standard 1016 Listed.



JT-150 Trap



P-trap to have cast brass J-Bend, brass slip nuts and 17 gauge brass wall bend. Chrome plated finish. Hex head clean-out plug with neoprene O-Ring, and top of plug to be flush with bottom of inside J-Bend.

HANDWASH SINKS

**NEW
PRODUCT GROUP!**

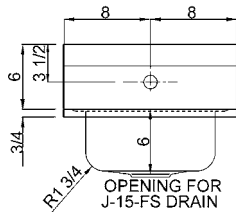
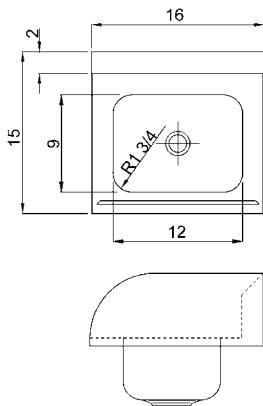
A-544-912 SERIES HANDWASH SINKS WITH SPLASH GUARDS

HANDWASH SINK W/ ENDSPLASHES

Fabricated of 20 gauge type 304 stainless steel. Exposed surfaces polished with a Hand-Blended Just Finish. Endsplashes 6" high with large radius edge. (Designated by "2E" in suffix) Support integral to endsplashes with keyhole mount. Includes one 14 gauge stainless steel wall clip.

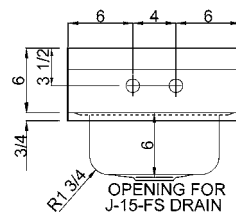
HANDWASH SINK with PEDESTAL and ENDSPLASHES

Sink fabricated of 20 gauge type 304 stainless steel. Pedestal of 18 gauge type 304 stainless steel with removeable access panel. Exposed surfaces polished with a Hand-Blended Just Finish. Endsplashes 6" high large radius edge. (Designated by "2E" in suffix) Support integral to endsplashes with keyhole mount. Includes one 14 gauge stainless steel wall clip. Pedestal provided with keyhole mount at wall, and provisions to simplify attachment to wall. Pedestal to be sealed to wall after installation by installer.



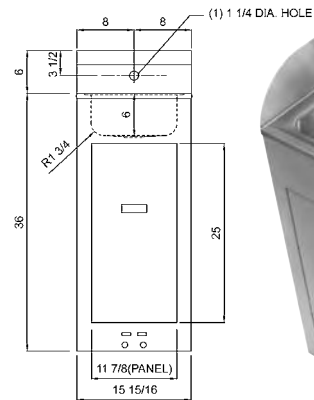
A-544-912-2E-S

Includes: Integral endsplashes and bracket support, JSL-46 (AC or B) sensor operated gooseneck faucet with thermostatic mixing valve, J-15-FS drain, and P-Trap



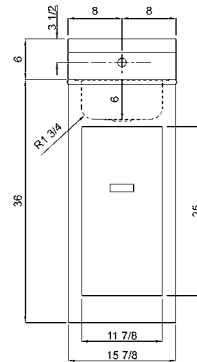
A-544-912-TA-2E

Includes: Integral endsplashes and bracket support, JS-45-TGA faucet, J-15-FS drain, and P-Trap



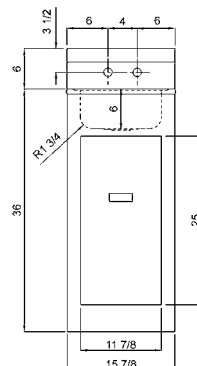
A-544-912-2E-P2-V

Includes: Integral endsplashes, full pedestal base with access panel, foot pedal valve with spout, J-15-FS drain, and P-Trap



A-544-912-2E-P2-S

Includes: Integral endsplashes, full pedestal base with access panel, JSL-46 (AC or B) sensor operated gooseneck faucet with thermostatic mixing valve, J-15-FS drain, and P-Trap



A-544-912-2E-P2-TA

Includes: Integral endsplashes and bracket support, JS-45-TGA faucet, J-15-FS drain, and P-Trap



HANDWASH SINKS

A-544-912 SERIES HANDWASH SINKS WITHOUT SPLASH GUARDS

HANDWASH SINK

Fabricated of 20 gauge type 304 stainless steel. Exposed surfaces polished with a Hand-Blended Just Finish. Integral support brackets at rear. Includes one 14 gauge stainless steel wall clip.

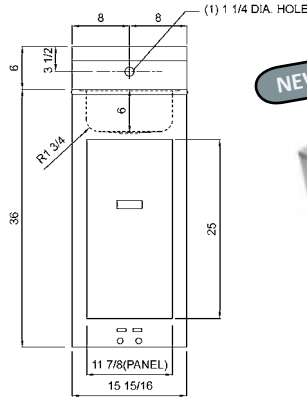
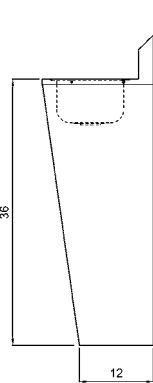
HANDWASH SINK with PEDESTAL

Sink fabricated of 20 gauge type 304 stainless steel. Pedestal of 18 gauge type 304 stainless steel with removeable access panel. Exposed surfaces polished with a Hand-Blended Just Finish. Includes one 14 gauge stainless steel wall clip. Pedestal provided with keyhole mount at wall, and provisions to simplify attachment to wall. Pedestal to be sealed to wall after installation by installer.

A-544-912-PT-V SPECIFICATION - ONLY

HANDWASH SINK with PEDESTAL

Sink fabricated of 20 gauge type 304 stainless steel. Exposed surfaces polished with a Hand-Blended Just Finish. Pedestal support of 18 gauge stainless steel. Includes one 14 gauge stainless steel wall clip.

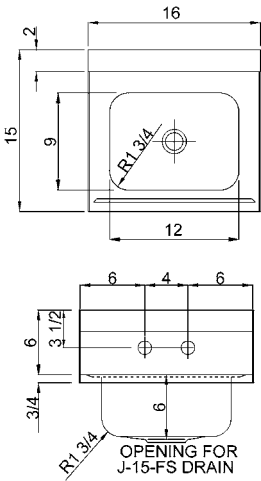


NEW!



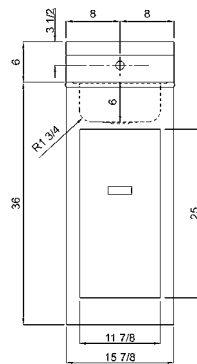
A-544-912-P2-V

Includes: Full pedestal base with access panel, foot pedal valve with spout, J-15-FS drain, and P-Trap



A-544-912-TA

Includes: JS-45-TGA faucet, J-15-FS drain, and P-Trap

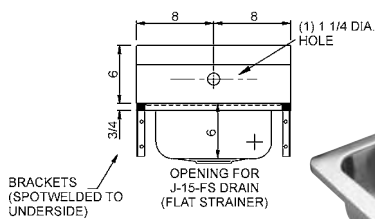


NEW!



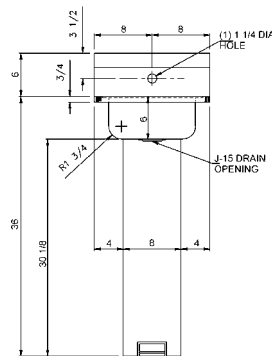
A-544-912-P2-S

Includes: Full pedestal base with access panel, JSL-46 (AC or B) sensor operated gooseneck faucet with thermostatic mixing valve, J-15-FS drain, and P-Trap



A-544-912-S

Includes: JSL-46 Sensor faucet with laminar flow control, JTM-47 thermostatic controlled mixing valve, J-15-FS drain, and P-Trap



A-544-912-PT-V

Includes: JS-10 gooseneck spout, foot pedal valve, J-15-FS drain, pedestal and one 14 gauge stainless steel wall clip.



HANDWASH SINKS

**NEW
PRODUCT GROUP!**

A-544-FS HANDWASH SINKS

HANDWASH SINK

Fabricated of 20 gauge type 304 stainless steel. Exposed surfaces polished with a Hand-Blended Just Finish. Integral support brackets at rear. Includes one 14 gauge stainless steel wall clip.

HANDWASH SINK with PEDESTAL

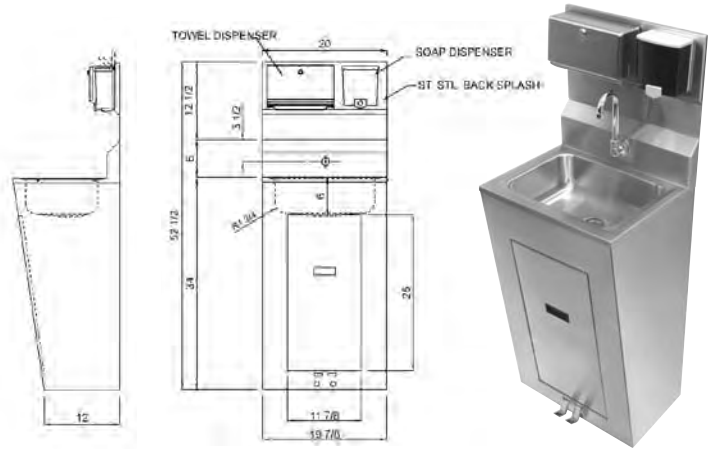
Sink fabricated of 20 gauge type 304 stainless steel. Pedestal of 18 gauge type 304 stainless steel with removeable access panel. Exposed surfaces polished with a Hand-Blended Just Finish. Includes one 14 gauge stainless steel wall clip. Pedestal provided with keyhole mount at wall, and provisions to simplify attachment to wall. Pedestal to be sealed to wall after installation by installer.

SOAP DISPENSER

High impact resistant ABS. Concealed locking lid. Gray and Black.

PAPER TOWEL DISPENSER

Satin finish stainless steel. Knob latch. Holds (200) C-Fold or (275) Multi-Fold Towels.



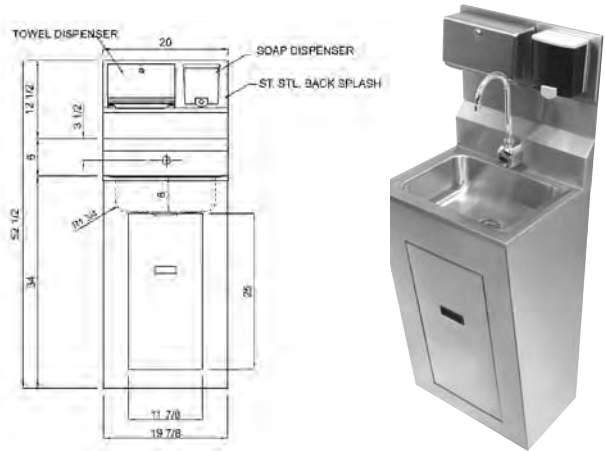
A-544-FS-SD-P1-V

Includes: Full pedestal base with access panel, foot pedal valve with spout, J-15-FS drain and P-Trap, soap dispenser, paper towel dispenser



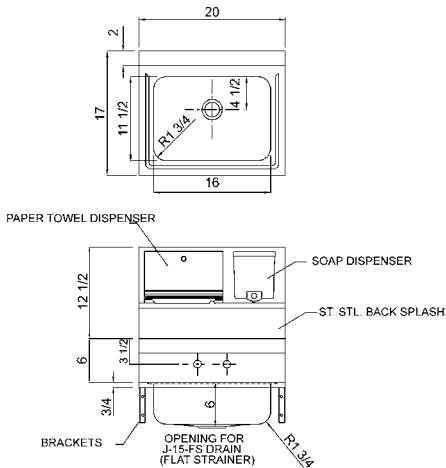
A-544-FS-SD

Includes: JS-45-TGA faucet, J-15-FS drain, P-Trap, soap dispenser, paper towel dispenser



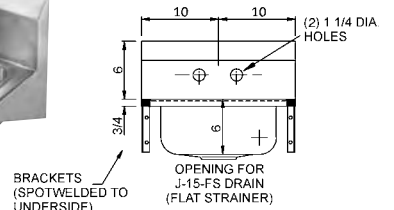
A-544-FS-SD-P1-S

Includes: Full pedestal base with access panel, JSL-46 (AC or B) sensor operated gooseneck faucet with thermostatic mixing valve, J-15-FS drain and P-Trap, soap dispenser, paper towel dispenser



A-544-FS-T

Includes: JS-47-TGSA faucet, J-15-FS drain and P-Trap





Enviro Series LAVATORY SINK SYSTEMS

**NEW
PRODUCT GROUP!**

JLT ENVIRO-SERIES LAVATORY SINK SYSTEMS

- Counters of heavy gauge Type 304 stainless steel seamless construction.
- Three **drop-in bowl** groups to choose from.
 - Oval - 16 x 19 generous capacity (Standard)
 - Round or Straight-sided
- Bowls of 18 ga. type 304 stainless steel.
- Counter and bowls to have a No. 4 satin finish.
- Optional ADA Compliant 4" offset apron component available to match counter lengths.
- 12 Ga. stainless steel mounting brackets - standard
- Sensor Packages include;
 - sensor faucet,
 - thermostatic mixing valve and
 - ADA Compliant grid drain and overflow system
- Standard 22" O.A. dimension front-to-back.



JLT-84-S
Includes: sensor package and OLF-1619.
Optional component apron (shown)



JLT-30-S
Includes: sensor package and OLF-1619.
Optional component apron (shown)



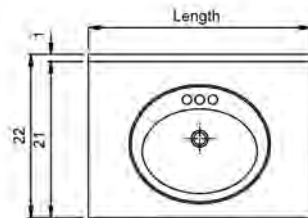
JLT-48-S
Includes: sensor package and OLF-1619.
Optional component apron (shown)



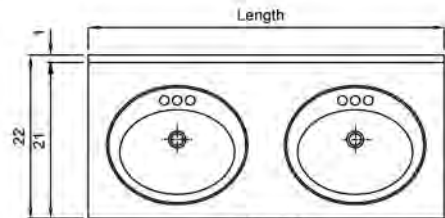
JLT-72-S
Includes: sensor package and OLF-1619.
Optional component apron (shown)

JLT SERIES LAVATORY SINKS		
Model No.	Length	Stations
JLT-24-S	24	1
JLT-30-S	30	1
JLT-36-S	36	1
JLT-42-S	42	1
JLT-48-S	48	2
JLT-54-S	54	2
JLT-60-S	60	2
JLT-66-S	66	2
JLT-72-S	72	3
JLT-84-S	84	4

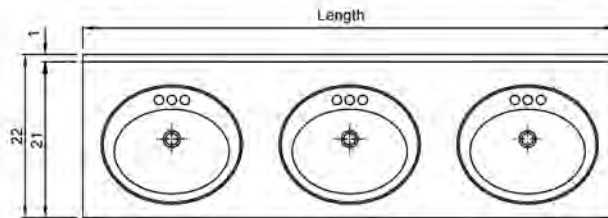
Custom counter sizes available



Single



Double



Triple

DROP-IN BOWL OPTIONS

CIF/CIR SERIES SERIES



OLF 1619 (STANDARD)



SL/SLF-ADA SERIES



OPTIONAL AS INTEGRAL BOWL



Available In: Oval (shown), Round, or Straight-Sided configurations.

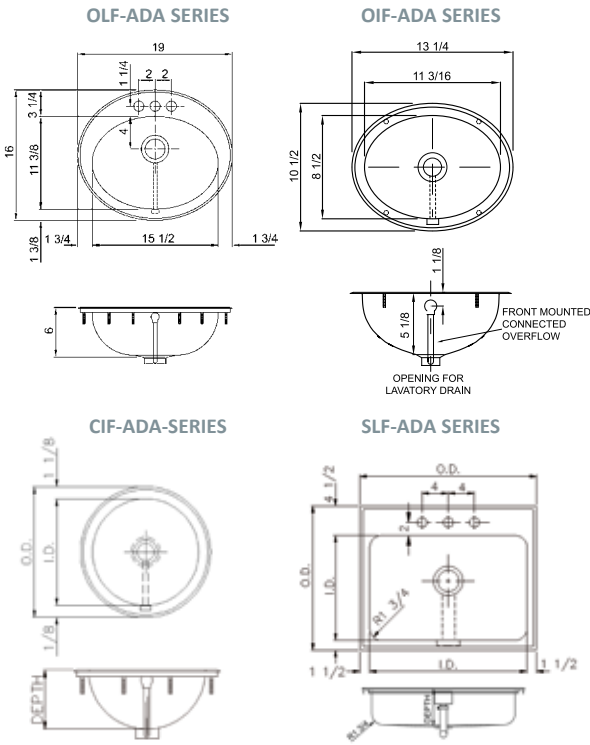
See bowl selection chart on page 10.

LAVATORY DROP-IN SINKS FOR JLT ENVIRO-SERIES SINK SYSTEMS

SPECIFICATIONS



Seamless die-drawn construction of 18 gauge type 304 stainless steel. Interior and top surfaces polished to a non-porous Hand-Blended Just Finish, and highlighted bowl rim. Smooth, fully coated underside insulates for sound, and reduces condensation. Self-rimming top mount Grip-Rim Plus* stainless steel mounting channels. Oval and round lavatories include clips and stainless steel mounting channel. Rectangle bowls have straight-sided compartment with 1 3/4" radius corners providing greater capacity.



NEW!

ADA COMPLIANT - 18 GAUGE CIRCULAR BOWL W/OUT OVERFLOW			
Model No.	O.D. DIA	I.D. DIA	Depth
CIR-ADA-12	14-1/4	12	6
CIR-ADA-14	16-1/4	14	5-1/4
CIR-ADA-15	17-1/4	15	5-1/4
WITH OVERFLOW			
CIF-ADA-12	14-1/4	12	6
CIF-ADA-14	16-1/4	14	5-1/4
CIF-ADA-15	17-1/4	15	5-1/4

NEW!

OVAL LAVATORY WITH LEDGE - LESS OVERFLOW - 18 GAUGE			
Model No.	O.D.	I.D.	Depth
OLR-ADA-1619	16 x 19	11-3/8 x 15-1/2	6
WITH OVERFLOW			
OLF-ADA-1619	16 x 19	11-3/8 x 15-1/2	6

NEW!

OVAL LAVATORY WITHOUT LEDGE - LESS OVERFLOW - 18 GAUGE			
Model No.	O.D.	I.D.	Depth
OIR-ADA-1013	10-1/2 x 13-1/4	8-1/2 x 11-3/16	5-1/8
WITH OVERFLOW			
OIF-ADA-1013	10-1/2 x 13-1/4	8-1/2 x 11-3/16	5-1/8

ADA COMPLIANT - SINGLE BOWL - 18 GAUGE - LEDGEBACK			
Model No.	O.D. ¹	I.D. ²	Depth
SL-ADA-1617-A-GR	16 x 17	10 x 14	4-1/2 to 6-1/2
SL-ADA-17519-A-GR	17-1/2 x 19	11-1/2 x 16	4-1/2 to 6-1/2
SL-ADA-2019-A-GR	20 x 19	14 x 16	4-1/2 to 6-1/2
WITH INTEGRA-FLOW SYSTEM			
SLF-ADA-1617-A-GR	16 x 17	10 x 14	4-1/2 to 6-1/2
SLF-ADA-17519-A-GR	17-1/2 x 19	11-1/2 x 16	4-1/2 to 6-1/2
SLF-ADA-2019-A-GR	20 x 19	14 x 16	4-1/2 to 6-1/2

¹ O.D. - Overall Dimensions (Front-to-Back X Left-to-Right)
² I.D. - Inside Dimensions (Front-to-Back X Left-to-Right)

SENSOR PACKAGES INCLUDE

JSL-300-AC or B Sensor



Deck mount, non-mixing, automatic faucet with chrome finish, solid brass 4" centerset construction, three hole punching required.

Includes faucet, sensor assembly with; Armored/vandal resistant control cable, wall mountable/vandal and water resistant control box, 0.5 GPM vandal resistant laminar flow control, 6V DC slow-closing solenoid valve.

AC POWERED

Plug-in power adapter with armored/vandal resistant output cable, 3/8" copper supply tube, in-line filter and mounting hardware.

BATTERY POWERED

Battery holder with (4) AA batteries, 3/8" copper supply tube, in-line filter and mounting hardware.



JTM47 Thermostatic Mixing Valve



Anti-Scald mixing valve with bronze body with integral check valves and adjustment cap with locking feature. 1/2" threaded union inlet and outlet



connections. Temperature range from 60 to 120 F (16 C to 49 C). ASSE Standard 1016 Listed.

J-ADA-115-FS



Chrome plated flat grid lavatory drain. 1-1/4" offset tailpiece.

ADDITIONAL FAUCET OPTIONS

JSL-100-AC or B



Deck mount, non-mixing, automatic sensor faucet with chrome finish, solid brass construction, single hole punch. Specify "AC" (includes plug-in power adapter) or "B" (includes battery holder with (4) AA batteries).



JV-1139-A-W4



Lavatory centerset faucet less drain with 4" wrist blade handles. Solid cast brass body, replaceable seats and areator. Flow rate 2.2 GPM at 80PSI. PVD lifetime finish.





HANDWASH SINKS

SPECIFICATIONS - NSF CERTIFIED - 14 GAUGE

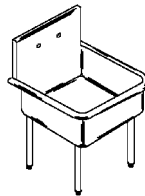
Fabricated of 14 gauge type 304, 18-8 stainless steel. Seamless welded construction throughout • Compartment corners fully coved, bottoms pitched to drain • Drainboards, where required, to have minimum 1/8" radius bend formations and 1/4" inside radius welds at corners. 1 1/2" roll rim on three sides • Exposed surfaces polished to Hand-Blended Just Finish • Supported on 16 gauge 1 5/8" O.D. stainless steel tubular legs with fully enclosed gussets and corrosion resistant bullet feet • Standard height of roll rim from finished floor is 36" unless otherwise specified • Models available with 8" backsplash and 14" depth without pricing change

NSFB-248

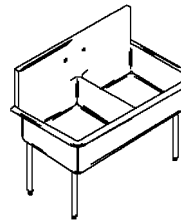
Shown with: JS-48-TA1 Faucet, J-35-BLA-2" Drains



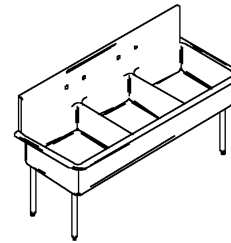
NSFB-100 SERIES



NSFB-200 SERIES



NSFB-300 SERIES



Available as ADA compliant. Specify as NSFB-ADA 4-1/2 to 6-1/2 depth and note drain location.



Available with JF-1535 overflow system. Specify as NSFBF to include overflow.

Models are also available without backsplashes. Replace "B" in model number with "N", i.e. NSFB-124 with 12" backsplash would become NSFN-124 without backsplash. Units available in special sizes, with or without drainboards.

NSFB-100 SERIES - SINGLE COMPARTMENT 12" DEEP - 12" BACKSPASH		
Model No.	O.D. ¹	I.D. ²
NSFB-124	27 x 27	24 x 24
*NSFB-124-24R or L	51 x 27	24 x 24
*NSFB-124-24RL	75 x 27	24 x 24
NSFB-130	33 x 27	30 x 24
*NSFB-130-24R or L	57 x 27	30 x 24
*NSFB-130-24RL	81 x 27	30 x 24
NSFB-136	39 x 27	36 x 24
*NSFB-136-24R or L	63 x 27	36 x 24
*NSFB-136-24RL	87 x 27	36 x 24
NSFB-142	45 x 27	42 x 24
NSFB-148	51 x 27	48 x 24
NSFB-154	57 x 27	54 x 24
NSFB-160	63 x 27	60 x 24
NSFB-166	69 x 27	66 x 24
NSFB-172	75 x 27	72 x 24
NSFB-178	81 x 27	78 x 24
NSFB-184	87 x 27	84 x 24
NSFB-190	93 x 27	90 x 24

* Denotes 24" Integral drainboard

All dimensions shown in inches.

NSFB-200 SERIES - DOUBLE COMPARTMENT - 12" DEEP - 12" BACKSPASH		
Model No.	O.D. ¹	I.D. ²
NSFB-230	33 x 27	15 x 24
*NSFB-230-24R or L	57 x 27	15 x 24
*NSFB-230-24RL	81 x 27	15 x 24
NSFB-236	39 x 27	18 x 24
*NSFB-236-24R or L	63 x 27	18 x 24
*NSFB-236-24RL	87 x 27	18 x 24
NSFB-242	45 x 27	21 x 24
*NSFB-242-24R or L	69 x 27	21 x 24
*NSFB-242-24RL	93 x 27	21 x 24
NSFB-248	51 x 27	24 x 24
*NSFB-248-24R or L	75 x 27	24 x 24
*NSFB-248-24RL	99 x 27	24 x 24
NSFB-254	57 x 27	27 x 24
*NSFB-254-24R or L	81 x 27	27 x 24
*NSFB-254-24RL	105 x 27	27 x 24
NSFB-260	63 x 27	30 x 24
*NSFB-260-24R or L	87 x 27	30 x 24
*NSFB-260-24RL	111 x 27	30 x 24
NSFB-266	69 x 27	33 x 24
NSFB-272	75 x 27	36 x 24
NSFB-278	81 x 27	39 x 24
NSFB-284	87 x 27	42 x 24
NSFB-290	93 x 27	45 x 24

* Denotes 24" Integral drainboard

NSFB-300 SERIES - TRIPLE COMPARTMENT - 12" DEEP - 12" BACKSPASH		
Model No.	O.D. ¹	I.D. ²
NSFB-345	48 x 27	15 x 24
*NSFB-345-24R or L	72 x 27	15 x 24
*NSFB-345-24RL	96 x 27	15 x 24
NSFB-354	57 x 27	18 x 24
*NSFB-354-24R or L	81 x 27	18 x 24
*NSFB-354-24RL	105 x 27	18 x 24
NSFB-360	63 x 27	20 x 24
*NSFB-360-24R or L	87 x 27	20 x 24
*NSFB-360-24RL	111 x 27	20 x 24
NSFB-372	75 x 27	24 x 24
*NSFB-372-24R or L	99 x 27	24 x 24
*NSFB-372-24RL	123 x 27	24 x 24
NSFB-384	87 x 27	28 x 24
NSFB-390	93 x 27	30 x 24

* Denotes 24" Integral drainboard

¹ O.D. - Overall Dimensions
(Left-to-Right X Front-to-Back)

² I.D. - Inside Dimensions Each Compartment
(Left-to-Right X Front-to-Back)

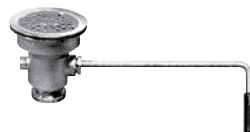
ADDITIONAL FAUCETS AND DRAINS

JS-48_TA1



Backsplash mounted faucet with 7-7/8" reach, PVD chrome finished tube spout. PVD chrome finish, cast brass body with lever handles.

J-35-BLA-2"



Twist handle drain with bronze body, stainless steel flat grid strainer, 2" O.D. tailpiece 4" long.

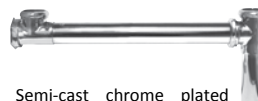
2" DIAMETER WASTE SYSTEMS

JT-200



Semi-cast chrome plated 2" P-trap with cleanout. 17 ga. wall bend and box flange.

JCW-202



Semi-cast chrome plated 2" P-trap with cleanout. 17 gauge wall bend and box flange.

JCW-203



Heavy duty 2" continuous waste. Polished chrome plated cast tee and slip nuts. 17 ga. polished chrome tubing. JCW-202 for two compartment sinks, JCW-203 for three compartment sinks.

COMMERCIAL APPLICATION SQUARE CORNER SCULLERY SINKS

SPECIFICATIONS - SQUARE CORNER SCULLERY SINKS - 14 GAUGE

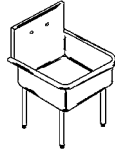
Fabricated of 14 gauge type 304, 18-8 stainless steel • Seamless welded construction throughout • Square corner compartment, bottoms pitched to drain • Drainboards, where required, to have minimum 1/8" radius bend formations and 1/4" inside radius fillet welds at corners. 1 1/2" roll rim on three sides • Exposed surfaces polished to Hand-Blended Just Finish • Supported on 14 gauge 2"x2" stainless steel angle leg with 14 ga. stainless steel gussets and hold down clips • Standard height of roll rim from finished floor is 36" unless otherwise specified • Models available with 8" backsplash and 14" depth without pricing change • 1-5/8" O.D. Stainless steel tubular legs available without pricing change

SB-124

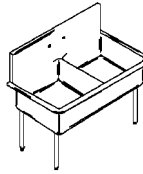
Shown with: JS-48-TA1 Faucet, J-35-BLA-2" Drain



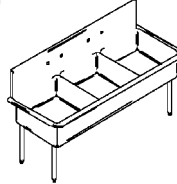
SB-100 SERIES



SB-200 SERIES



SB-300 SERIES



SB-372-24RL

Shown with: (2) JS-48-TA1 Faucets, (3) J-35-BLA-2" Drains



Available as ADA compliant. Specify as NSFB-ADA 4-1/2 to 6-1/2 depth and note drain location.



Available with JF-1535 overflow system. Specify as SBF to include overflow.

Models are also available without backsplashes, substitute "B" in model number with "N", i.e. SB-124 with 12" backsplash would become SN-124 without backsplash. Units available in special sizes, with or without drainboards. **Overflow fittings available, specify as such.**

SB-100 SERIES - SINGLE COMPARTMENT 12" DEEP - 12" BACKSPASH		
Model No.	UNIT O.D. ¹	COMPARTMENT I.D. ²
SB-124	27 x 27	24 x 24
*SB-124-24R or L	51 x 27	24 x 24
*SB-124-24RL	75 x 27	24 x 24
SB-130	33 x 27	30 x 24
*SB-130-24R or L	57 x 27	30 x 24
*SB-130-24RL	81 x 27	30 x 24
SB-136	39 x 27	36 x 24
*SB-136-24R or L	63 x 27	36 x 24
*SB-136-24RL	87 x 27	36 x 24
SB-142	45 x 27	42 x 24
SB-148	51 x 27	48 x 24
SB-154	57 x 27	54 x 24
SB-160	63 x 27	60 x 24
SB-166	69 x 27	66 x 24
SB-172	75 x 27	72 x 24
SB-178	81 x 27	78 x 24
SB-184	87 x 27	84 x 24
SB-190	93 x 27	90 x 24

SB-200 SERIES - DOUBLE COMPARTMENT 12" DEEP - 12" BACKSPASH		
Model No.	UNIT O.D. ¹	COMPARTMENT I.D. ²
SB-230	33 x 27	15 x 24
*SB-230-24R or L	57 x 27	15 x 24
*SB-230-24RL	81 x 27	15 x 24
SB-236	39 x 27	18 x 24
*SB-236-24R or L	63 x 27	18 x 24
*SB-236-24RL	87 x 27	18 x 24
SB-242	45 x 27	21 x 24
*SB-242-24R or L	69 x 27	21 x 24
*SB-242-24RL	93 x 27	21 x 24
SB-248	51 x 27	24 x 24
*SB-248-24R or L	75 x 27	24 x 24
*SB-248-24RL	99 x 27	24 x 24
SB-254	57 x 27	27 x 24
*SB-254-24R or L	81 x 27	27 x 24
*SB-254-24RL	105 x 27	27 x 24
SB-260	63 x 27	30 x 24
*SB-260-24R or L	87 x 27	30 x 24
*SB-260-24RL	111 x 27	30 x 24
SB-266	69 x 27	33 x 24
SB-272	75 x 27	36 x 24
SB-278	81 x 27	39 x 24
SB-284	87 x 27	42 x 24
SB-290	93 x 27	45 x 24

SB-300 SERIES - TRIPLE COMPARTMENT 12" DEEP - 12" BACKSPASH		
Model No.	UNIT O.D. ¹	COMPARTMENT I.D. ²
SB-345	48 x 27	15 x 24
*SB-345-24R or L	72 x 27	15 x 24
*SB-345-24RL	96 x 27	15 x 24
SB-354	57 x 27	18 x 24
*SB-354-24R or L	81 x 27	18 x 24
*SB-354-24RL	105 x 27	18 x 24
SB-360	63 x 27	20 x 24
*SB-360-24R or L	87 x 27	20 x 24
*SB-360-24RL	111 x 27	20 x 24
SB-372	75 x 27	24 x 24
*SB-372-24R or L	99 x 27	24 x 24
*SB-372-24RL	123 x 27	24 x 24
SB-384	87 x 27	28 x 24
SB-390	93 x 27	30 x 24

* Denotes 24" Integral drainboard
¹ O.D. - Overall Dimensions (Left-to-Right X Front-to-Back)
² I.D. - Inside Dimensions-Each Compartment (Left-to-Right X Front-to-Back)

All dimensions shown in inches.

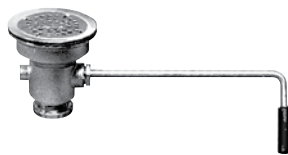
FAUCETS AND DRAINS

JS-48_TA1



Backsplash mounted faucet with 7-7/8" reach, PVD chrome finished tube spout. PVD chrome finish, cast brass body with lever handles.

J-35-BLA-2"



Twist handle drain with bronze body, stainless steel flat grid strainer, 2" O.D. tailpiece 4" long.

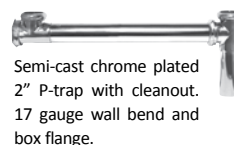
2" DIAMETER WASTE SYSTEMS

JT-200



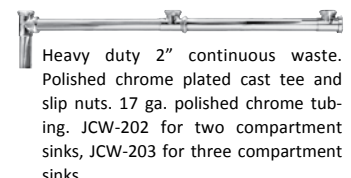
Semi-cast chrome plated 2" P-trap with cleanout. 17 ga. wall bend and box flange.

JCW-202



Semi-cast chrome plated 2" P-trap with cleanout. 17 gauge wall bend and box flange.

JCW-203



Heavy duty 2" continuous waste. Polished chrome plated cast tee and slip nuts. 17 ga. polished chrome tubing. JCW-202 for two compartment sinks, JCW-203 for three compartment sinks.



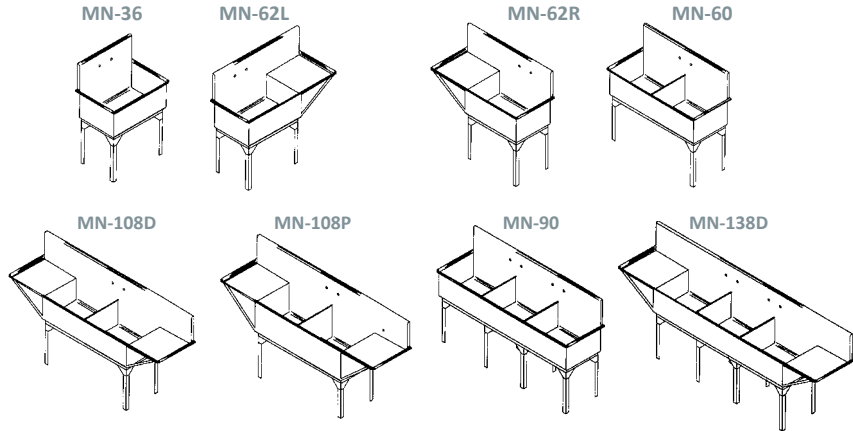
GOVERNMENT TYPE SCULLERY SINKS IN ACCORDANCE WITH WW-P-541b

SPECIFICATIONS - GOVERNMENT TYPE SINKS - 14 GAUGE

Government-type scullery sink assemblies are fabricated of 14 gauge Type 304 stainless steel, in accordance to federal Specification WW-P-541b, dated August 1, 1980 • All sinks have 15" high backsplash, adjustable angle legs and soap dish • Front and rear horizontal radius inside compartment 11/16" • Vertical corners of compartment are square • Bottoms pitched to drain • Drainboards, where applicable, to have a minimum 1/8" radius bend formations and 1/4" inside radius fillet welds at corners • 1-1/2" roll rim on three sides • Exposed surfaces polished to a Hand-Blended Just Finish • Standard height of roll rim from finished floor is 36" • Centerline of faucet holes is 7-1/2" from top of backsplash

MN-138D

Shown with optional trim: (2) JS-48-TA1 Faucets, (3) J-35-BLA-2" Drains



Government Scullery - MN Style

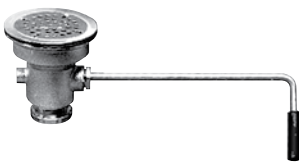
FAUCETS AND DRAINS

JS-48_TA1



Backsplash mounted faucet with 7-7/8" reach, PVD chrome finished tube spout. PVD chrome finish, cast brass body with lever handles.

J-35-BLA-2"



Twist handle drain with bronze body, stainless steel flat grid strainer, 2" O.D. tailpiece 4" long.

2" DIAMETER WASTE SYSTEMS

JT-200



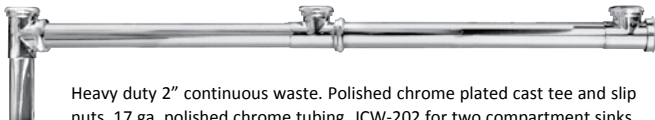
Semi-cast chrome plated 2" P-trap with cleanout. 17 ga. wall bend and box flange.

JCW-202



Semi-cast chrome plated 2" P-trap with cleanout. 17 gauge wall bend and box flange.

JCW-203



Heavy duty 2" continuous waste. Polished chrome plated cast tee and slip nuts. 17 ga. polished chrome tubing. JCW-202 for two compartment sinks, JCW-203 for three compartment sinks.

MN SERIES - SINGLE COMPARTMENT 15" BACKSPLASH - 16" DEEP - NO DRAINBOARD		
Model No.	O.D. ¹	I.D. ²
MN-36	39 x 27	36 x 24

MN SERIES - SINGLE COMPARTMENT 15" BACKSPLASH - 16" DEEP - ONE DRAINBOARD ⁵		
Model No.	O.D. ¹	I.D. ²
MN-62L ³	61-1/2 x 27	36 x 24
MN-62R ⁴	61-1/2 x 27	36 x 24

MN SERIES - DOUBLE COMPARTMENT 15" BACKSPLASH - 16" DEEP - NO DRAINBOARD		
Model No.	O.D. ¹	I.D. ²
MN-60	63 x 27	30 x 24

MN SERIES - DOUBLE COMPARTMENT 15" BACKSPLASH - 16" DEEP - TWO DRAINBOARDS ⁵		
Model No.	O.D. ¹	I.D. ²
MN-108D	108 x 27	30 x 24

MN SERIES - TRIPLE COMPARTMENT 15" BACKSPLASH - 16" DEEP - NO DRAINBOARD		
Model No.	O.D. ¹	I.D. ²
MN-90	93 x 27	30 x 24

MN SERIES - TRIPLE COMPARTMENT 15" BACKSPLASH - 16" DEEP - TWO DRAINBOARDS ⁵		
Model No.	O.D. ¹	I.D. ²
MN-138D	138 x 27	30 x 24

MN-108P includes steam valve, steam jet fitting and connection.

MN-P SERIES - DOUBLE COMPARTMENT 15" BACKSPLASH - 20" DEEP - TWO DRAINBOARDS ⁵ INCLUDES STEAM HEATER FITTINGS		
Model No.	O.D. ¹	I.D. ²
MN-108P	108 x 27	30 x 24

¹ O.D. - Overall Dimensions (Left-to-Right X Front-to-Back)
² I.D. - Inside Dimensions Each Compartment (Left-to-Right X Front-to-Back)
³ "L" denotes compartment on Left.
⁴ "R" denotes compartment on Right.
⁵ Drainboard 24" long including roll rim.

All dimensions shown in inches.

Enviro Series SURGEONS SCRUB SINKS

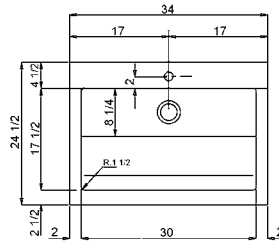
Pre-piped for easy hook up



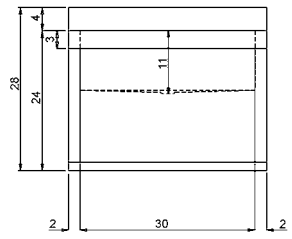
J770-1-S

Single Station Scrub Sink with Sensor Faucet and Mixing Valve

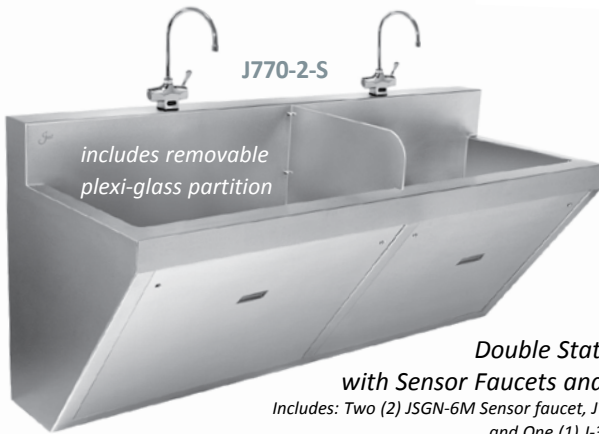
Includes: One (1) JSGN-6M Sensor faucet, JTM-47 mixing valve, and J-35-SSF drain system.



J770-1 TOP VIEW



J770-1 FRONT VIEW

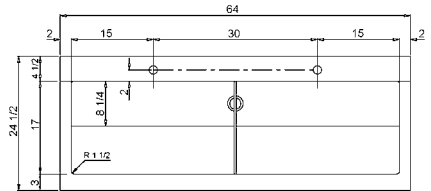


J770-2-S

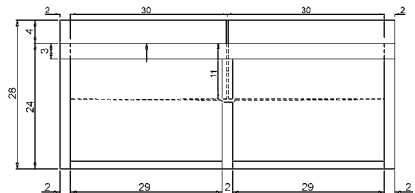
includes removable plexi-glass partition

Double Station Scrub Sink with Sensor Faucets and Mixing Valve

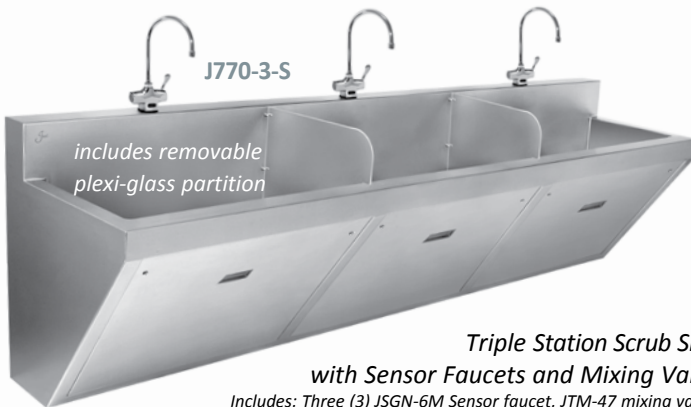
Includes: Two (2) JSGN-6M Sensor faucet, JTM-47 mixing valve, and One (1) J-35-SSF drain system.



J770-2 TOP VIEW



J770-2 FRONT VIEW

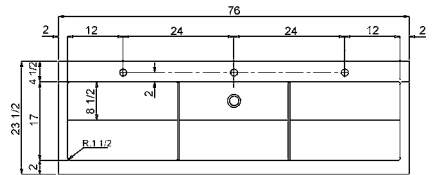


J770-3-S

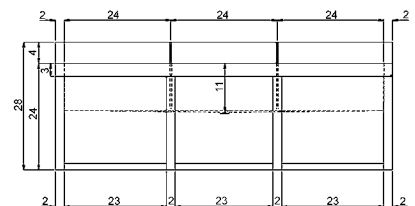
includes removable plexi-glass partition

Triple Station Scrub Sink with Sensor Faucets and Mixing Valve

Includes: Three (3) JSGN-6M Sensor faucet, JTM-47 mixing valve, and One (1) J-35-SSF drain system.



J770-3 TOP VIEW



J770-3 FRONT VIEW

ALL MODELS INCLUDE:

- JSGN-6M Sensor faucet with manual override and laminar flow control
- JTM-47 thermostatic controlled mixing valve
- J-35-SSF stainless steel grid drain
- JT-150 cast brass P-trap with cleanout

TECHNICAL DATA

- 16 gauge type 304 stainless steel
- Removable front panel. Underside to be sound deadened
- No. 4 satin finish on interior surfaces of compartment
- Exposed exterior surfaces to have a brushed finish
- Pre-piped for easy hook up
- Integral brackets for easy installation

JSGN-6M- AC or B



Deck mount, mixing, automatic gooseneck faucet with solid brass construction with built-in temperature control and manual override.

Includes faucet/sensor assembly with: Armored/vandal resistant control cable, wall mountable, vandal and water resistant control box, 8" gooseneck spout with 2.0 GPM Laminar Flow Control, 6V DC slow closing solenoid valve, plug-in power adapter with armored/vandal resistant output cable, two (2) 3/8" braided S.S. supply lines, two (2) in-line filter/check valves with two (2) 3/8" compression adapters and mounting hardware.





SURGEONS WASH-UP SINKS

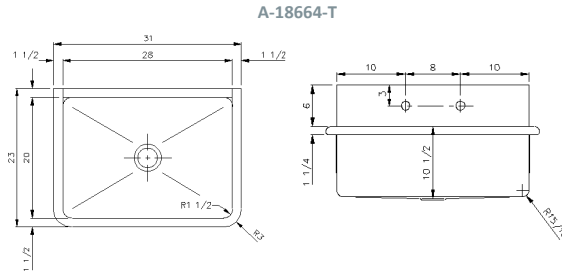
A-18664 SURGEONS WASH-UP SINK—STANDARD AND SENSOR TYPE

Seamless welded construction of 14-gauge type 304 stainless steel. All interior surfaces are polished to a non-porous, Hand-Blended JUST Finish. Exposed exterior surfaces shall have a brush finish. Drain punch #35 for Just J-35 drain unless otherwise specified. Furnished with two stainless steel wall brackets and one stainless steel wall clip. **The following packages include the A-18664 as described and accessories as follows:**

- A-18664-T Includes: JS-47-TGSA-W faucet and J-35-SSF drain.
- A-18664-TF Includes: JFV-320 pedal valve with mounting package, JS-10 spout with rose spray, J-35-SSF drain.
- A-18664-S Includes: JSL-46-Sensor faucet, JTM-47 thermostatic controlled mixing valve and J-35-SSF drain.



A-18664-T



A-18664-S
Sensor Series

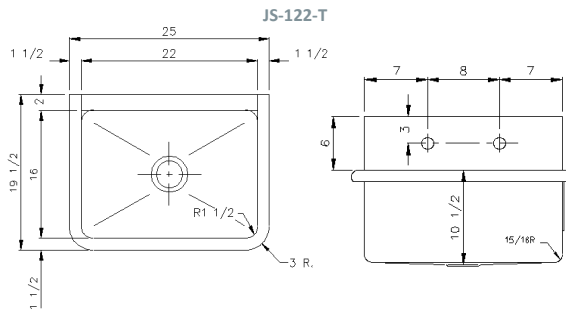
JS-122 SURGEONS WASH-UP SINK—STANDARD AND SENSOR TYPE

Seamless welded construction of 14-gauge type 304 stainless steel. All interior surfaces are polished to a non-porous, Hand-Blended JUST Finish. Exposed exterior surfaces shall have a brush finish. Drain punch #35 for Just J-35 drain unless otherwise specified. Furnished with two stainless steel wall brackets and one stainless steel wall clip. **The following packages include the JS-122 as described and accessories as follows:**

- JS-122-T Includes: JS-47-TGSA -W faucet and J-35-SSF drain.
- JS-122-TF Includes: JFV-320 pedal valve with mounting package, JS-10 spout with rose spray, J-35-SSF drain.
- JS-122-S Includes: JSL-46-Sensor faucet, JTM-47 thermostatic controlled mixing valve and J-35-SSF drain.



JS-122-T



JS-122-S
Sensor Series

SERVICE SINK

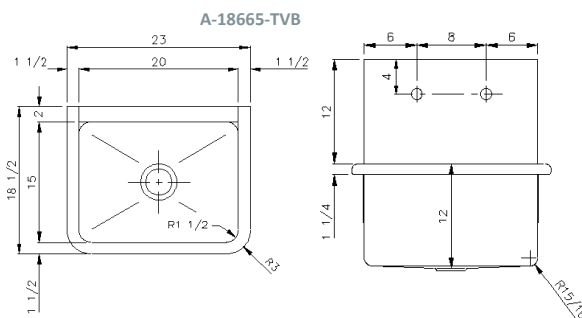
A-18665 SERVICE SINK—STANDARD AND SENSOR TYPE

Seamless welded construction of 14-gauge type 304 stainless steel. All interior surfaces are polished to a non-porous, Hand-Blended JUST Finish. Exposed exterior surfaces shall have a brush finish. Drain punched #35 for Just J-35 unless otherwise specified. Furnished with two stainless steel wall brackets and one stainless steel wall clip. **The following packages include the A-18665 as described and include accessories as follows:**

- A-18665-TCP Includes: 2) J-514 PVD chrome finished single faucets, JTS-1060 trap standard.
- A-18665-TMX Includes: JLK-400 rough brass mixing faucet with hose and spout and pail hook, JTS-1060 trap standard.
- A-18665-TVB Includes: JVB-1200 faucet with vacuum breaker, hose end spout and pail hook, JTS-1060 trap standard.
- A-18665-S Includes: JSL-46-Sensor faucet, JTM-47 thermostatic controlled mixing valve and J-35-SSF drain.



A-18665-TVB



A-18665-S
Sensor Series



SURGEONS MULTI-STATION WASH-UP SINKS

SURGEONS MULTI-STATION WASH-UP SINK SERIES—STANDARD AND SENSOR TYPE

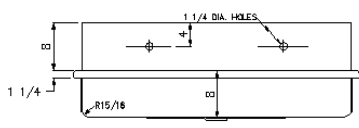
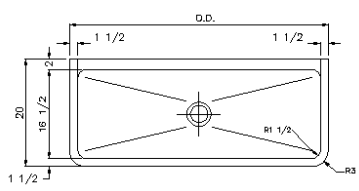
Seamless welded construction of 14 gauge type 304 stainless steel • Interior surfaces polished to a non-porous, Hand-Blended JUST finish • Exposed surfaces shall have a brush finish • Furnished with two 14 gauge stainless steel wall brackets and 14 gauge stainless steel wall clips • Drain punch #35 for Just J-35 drain • Specify required faucet punching



J-7220-T

Includes: (3) JS-10 spouts, (3) JFVC-301 foot pedal valves and (1) J-35-SSF stainless steel grid drain system

MULTI-STATION WASH-UP SINKS		
Model No.	O.D.	STATIONS
J-4820	48	2
J-6020	60	3
J-7220	72	3
J-9620	96	4



J-7220-S Sensor Series

Includes: (3) JSL-46 Sensor faucet, (1) JTM-47 thermostatic controlled mixing valve, J-35-SSF stainless steel grid drain system

MULTI-STATION WASH-UP SINKS – SENSOR SERIES		
Model No.	O.D.	STATIONS
J-4820-S	48	2
J-6020-S	60	3
J-7220-S	72	3
J-9620-S	96	4

FAUCETS AND DRAINS

JFVC-301
Floor mounted dual pedal operated self closing foot valves.



JFV-320
Wall mounted foot pedal valve with long pedals.



JKV-400
Wall mounted knee valve with mounting package.



JSL-46-AC or B
 Sensor-operated backsplash mounted faucet.
 "AC" Plug-in
 "B" Battery



JS-10
 Backsplash mounted PVD chrome finished gooseneck spout.



JS-20
 Deck mounted, chrome plated, rigid 9" reach, tubular gooseneck spout with aerator.



JS-47-TGSA
 Backsplash mounted gooseneck faucet. PVD chrome finished cast brass body with lever handles. PVD lifetime finish.



JVB-1200
 Wall mount. Rigid brass spout with pail hook, vacuum breaker, solid cast brass body. Polished PVD chrome finish.



JS-48-TA1
 8" PVD chrome finished tube spout with aerator. PVD chrome finish. Cast brass body.



J-35
Stainless steel crumb cup strainer with removable basket.



J-35-SSF
Stainless steel flat grid strainer body and tailpiece.



J-514
Backsplash mounted. PVD chrome finish, cast brass bibb faucet with hose end spout.





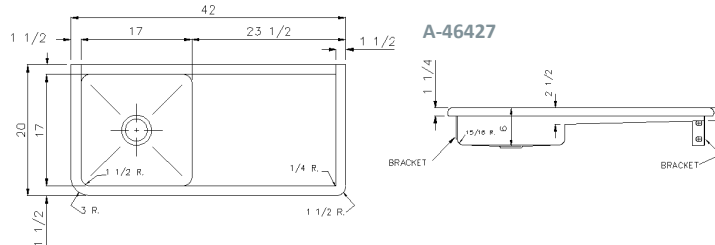
SPECIAL SERVICE SINKS - V.A. HOSPITAL APPLICATIONS

A-46427 SERVICE SINK

Seamless welded fabrication of 14 gauge type 304 stainless steel. 1-1/2" roll rim on front and sides. Interior surfaces polished to a Hand-Blended Just Finish. Exposed exterior surfaces polished with a standard brush finish. Furnished with two 12 gauge stainless steel brackets, and two 14 gauge stainless steel wall clips. Drain punched #35 centered for Just J-35 drain unless otherwise specified. Meets Federal Spec. WWP-541 and all related amendments for Part A, Type VII CRS.

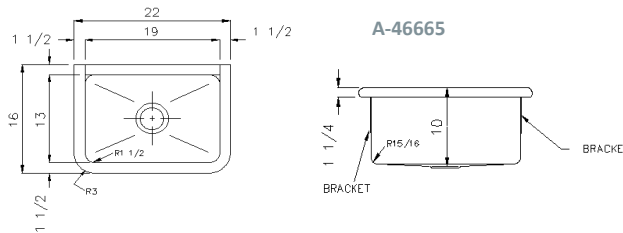


Shown with: J-35-SSF Drain and Right-hand drainboard. Available with left hand drainboard.



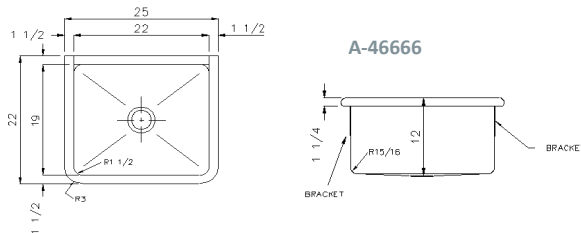
A-46665 SERVICE SINK

Seamless welded fabrication of 14 gauge type 304 stainless steel. 1-1/2" roll rim on front and sides. Interior surfaces polished to a Hand-Blended Just Finish. Exposed exterior surfaces polished with a standard brush finish. Furnished with two 12 gauge stainless steel brackets, and one 14 gauge stainless steel wall clip. Drain punched #35 centered for Just J-35 drain unless otherwise specified. Meets Federal Spec. WWP-541 and all related amendments for Part A, Type VII CRS.



A-46666 SERVICE SINK

Seamless welded fabrication of 14 gauge type 304 stainless steel. 1-1/2" roll rim on front and sides. Interior surfaces polished to a Hand-Blended Just Finish. Exposed exterior surfaces polished with a standard brush finish. Furnished with two 12 gauge stainless steel brackets, and one 14 gauge stainless steel wall clip. Drain punched #35 centered for Just J-35 drain unless otherwise specified. Meets Federal Spec. WWP-541 and all related amendments for Part A, Type VII CRS.



A-46712 SERVICE SINK—STANDARD AND SENSOR TYPE

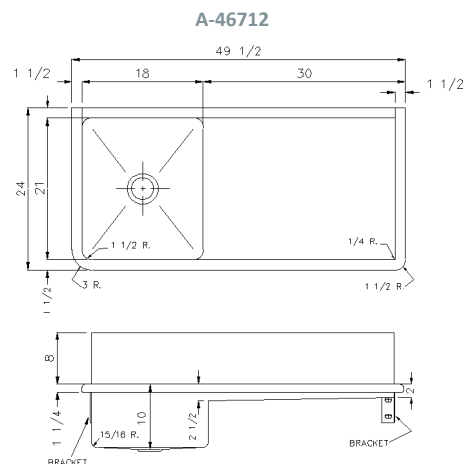
Seamless welded fabrication of 14 gauge type 304 stainless steel. 1-1/2" roll rim on front and sides. Interior surfaces polished to a Hand-Blended Just Finish. Exposed exterior surfaces polished with a standard brush finish. Furnished with two 12 gauge stainless steel brackets, and two 14 gauge stainless steel wall clips. Drain punched #35 centered for Just J-35 drain unless otherwise specified. Meets Federal Spec. WWP-541 and all related amendments for Part A, Type VII CRS.



A-46712
Shown with: JS-47-TGSA-W Faucet, J-35-SSF Drain. Right-hand drainboard shown. Available with left hand drainboard or other faucet punchings.



A-46712-S Sensor Series
Includes: JSL-46 Sensor faucet, JTM-47 thermostatic mixing valve, J-35-SSF Drain. Right-hand drainboard shown. Available with left hand drainboard or other faucet punchings.





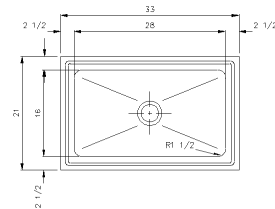
MOP SINKS - LAUNDRY TUBS

A-47699 FLOOR MOP SINK

Top, bowl and apron fabricated of 16-gauge type 304 stainless steel. Interior surfaces polished to a non-porous Hand-Blended Just Finish. Exposed exterior surfaces have a brush finish. Furnished with J-127-B stainless steel perforated strainer with 3" caulk connection and one wall clip.



A-47699

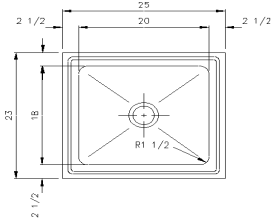


C-2523 FLOOR MOP SINK

Top, bowl and apron fabricated of 16-gauge type 304 stainless steel. Interior surfaces polished to a non-porous Hand-Blended Just Finish. Exposed exterior surfaces have a brush finish. Furnished with J-127-B stainless steel perforated strainer with 3" caulk connection and one wall clip.



C-2523

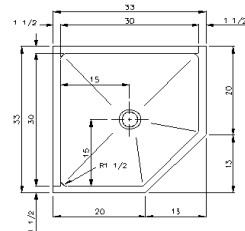


B-33213 CORNER MOP SINK

Seamless welded fabrication (body and apron) of 16-gauge type 304 stainless steel. Backsplash on two sides, 12" high, and compartment 8" deep. Interior surfaces polished to a non-porous, Hand-Blended Just Finish. Exposed exterior surfaces have a brush finish. Furnished with J-127-B stainless steel perforated strainer with 3" caulk connection and two wall clips.

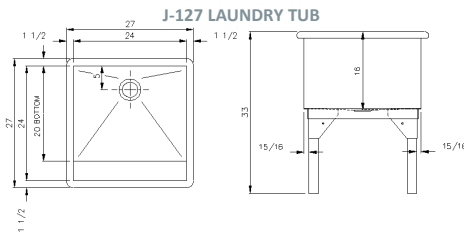


B-33213

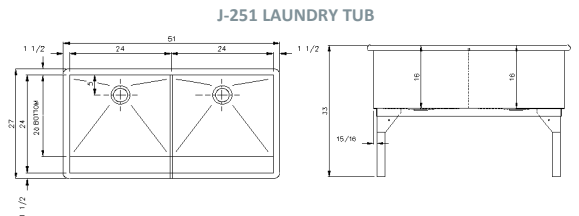


J-127 SINGLE COMPARTMENT LAUNDRY TUB / J-251 DOUBLE COMPARTMENT LAUNDRY TUB

Seamless welded construction of 14 gauge type 304 stainless steel. 1-1/2" dia. roll rim on four sides polished with a #4 finish. Interior surfaces polished to a Hand-Blended Just Finish. Exposed exterior surfaces polished with a standard brush finish. Includes four 14 gauge type 304 stainless steel angle legs with frame. Drain punching must be specified.

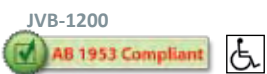


J-127 LAUNDRY TUB

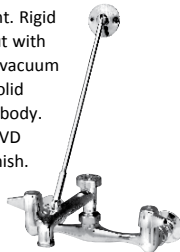


J-251 LAUNDRY TUB

FAUCETS AND DRAINS



Wall mount. Rigid brass spout with pail hook, vacuum breaker, solid cast brass body. Polished PVD chrome finish.

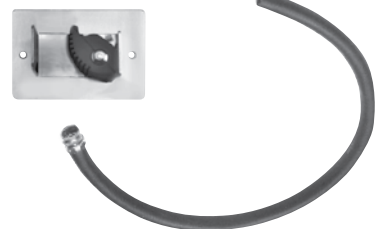


JMH-3



Three station mop holder.

JH-1 AND JH-4



Single hose clip and rubber hose.



LAVATORIES

B-21429 LAVATORY—STANDARD AND SENSOR TYPE



Seamless welded construction of 18 gauge type 304 stainless steel, with integral backsplash and sloped apron. Die-formed soap dish. Exposed surfaces polished to a non-porous, Hand-Blended Just Finish. Fully coated underside insulates for sound and reduces condensation. Furnished with two integral apron clips for mounting. Includes one wall clip. Specify drain and faucet punching.

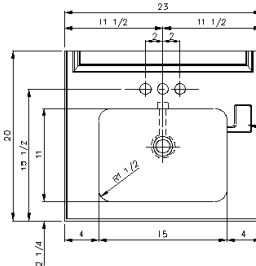


Shown with: JV-1139-A Faucet, J-115-FS Drain with overflow.

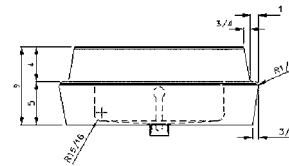


B-21429-S Sensor Series

Includes: JSL-100 Sensor Faucet, JTM-47 thermostatic mixing valve, J-ADA-115-FS Drain with overflow.



B-21429

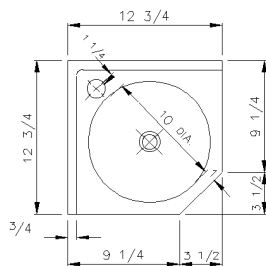


A-35929-T CORNER LAVATORY – MOB/EXAM ROOM SINK

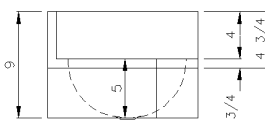


Top and bowl seamless welded construction of 18 gauge type 304 stainless steel. Apron constructed of 18 gauge type 304 stainless steel, spotwelded to top. Exposed surfaces polished with a non-porous Hand-Blended Just Finish. Underside coated to insulate for sound and reduce condensation. Furnished with two wall clips for wall mounting.

Includes: J-981 Single handle faucet with J-15-FS drain system.



A-35929



J-981



Single handle, washerless mixing faucet with brass swing spout. PVD chrome finish

SURGEONS LAVATORY WITH INSTRUMENT TRAYS

A-18666 SURGEONS LAVATORY—STANDARD AND SENSOR TYPE

Seamless welded construction of 16-gauge type 304 stainless steel. Exposed surfaces polished with a Hand-Blended Just Finish. Underside coated to reduce sound and condensation. Furnished with two type 304 stainless steel tubular wall brackets. The following packages include the A-18666 as described and includes accessories as follows:

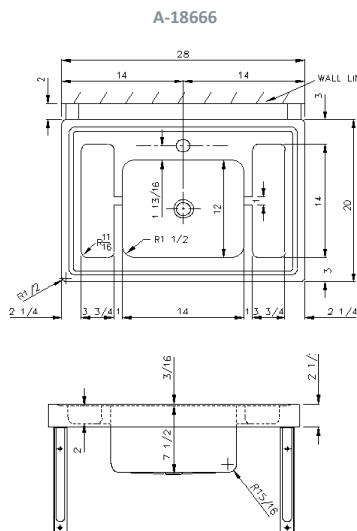
- A-18666-T Includes: J-1174-R faucet, J-15-FS drain.
- A-18666-TF Includes: JFV-320 pedal valve with mounting package, JS-20 Spout with rose spray, J-15-FS drain.
- A-18666-S Includes: JSGN-6 Sensor faucet, JTM-47 thermostatic mixing valve, J-15-FS drain system.



A-18666-T



A-18666-S
Sensor Series



A-18666

JSGN-6-AC or B



Sensor operated. Single-hole deck mount, non-mixing automatic gooseneck faucet with chrome finish, solid brass construction.
 "AC" Plug-in type
 "B" Battery type

COMMERCIAL GRADE LAVATORIES

A-33338—STANDARD AND SENSOR TYPE



ADA Compliant seamless welded construction, fabricated of 18 gauge type 304 stainless steel, with integral-formed backsplash and apron • Exposed surfaces polished with Hand-Blended Just Finish • Underside coated to insulate for sound and reduce condensation • Furnished with wall clip and integral apron clip for wall mounting • Includes connected overflow • Specify punchings. **The following packages include the A-33338 as described and accessories as follows:**

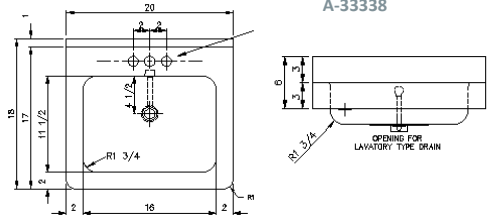
- A-33338-T Includes: JV-1139-A Faucet, J-115-FS Drain with overflow
- A-33338-S Includes: JSL-100 Sensor Faucet, JTM-47 thermostatic mixing valve, J-ADA-115-FS Drain with overflow



A-33338-T



A-33338-S
Sensor Series



HCL-23520—STANDARD AND SENSOR TYPE



ADA Compliant wall hung, wheelchair accessible lavatory • Seamless welded construction, fabricated of 18 gauge type 304 stainless steel, with integral-formed backsplash and apron • Exposed surfaces polished with Hand-Blended Just Finish • Underside coated to insulate for sound and reduce condensation • Furnished with wall clip, integral apron clip and brackets for wall mounting • Includes connected overflow. Specify punchings. **The following packages include the HCL-23520 as described and accessories as follows:**

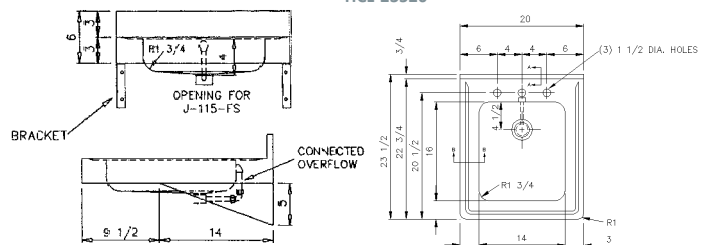
- HCL-23520-T Includes: J-1174-KS-ADA Compliant Faucet, J-ADA-115-FS ADA Compliant Drain with overflow.
- HCL-23520-S Includes: JSGN-6 Sensor faucet, JTM-47 thermostatic mixing valve, J-ADA-15-FS drain system.



HCL-23520-T



HCL-23520-S
Sensor Series



FAUCETS AND DRAINS

JV-1139-A



Lavatory faucet less drain. Polished chrome. Available with wrist blade handles.
PVD chrome finish. 2.2 GPM.

J-1174-R



Concealed mixing faucet with 5-1/2" reach, PVD chrome rigid goose-neck spout. 2.2 GPM

JSGN-6-AC or B



Sensor operated. Single-hole deck mount, non-mixing automatic gooseneck faucet solid brass construction.
 "AC" Plug-in type.
 "B" Battery type.

J-1174-KS



Concealed mixing faucet with 5-1/2" reach, PVD chrome swivel gooseneck spout. 2.2 GPM

J-ADA-952



Lavatory faucet with flat grid drain. Polished PVD chrome finish. 2.2 GPM

J-115-FS



Chrome plated flat grid lavatory drain. 1-1/4" tailpiece.

J-ADA-115-FS



Chrome plated flat grid lavatory drain. 1-1/4" offset tailpiece.



CLASSROOM WALL-HUNG SINK/DRINKING FOUNTAIN

ADA COMPLIANT



Rugged and durable, this classroom sink unit fills the needs of today's classroom in a stand-alone unit • Compliant with the Americans with Disabilities Act, and CABO/ANSI A117.1-1992 Accessible and Usable Buildings and Facilities, this unit eliminates the need for special cabinetry to deal with plumbing requirements in the classroom and compliance with ADA

SPECIFICATIONS - STAINLESS STEEL SINK TOP and ENCLOSURE

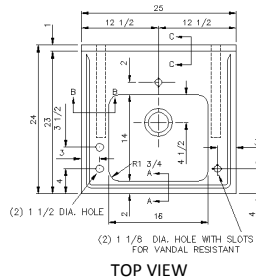
Top and integral apron constructed of 16 gauge type 304 stainless steel • Bowl of 18 gauge stainless steel, seamless drawn construction • Vandal resistant enclosure of 18 gauge type 304 stainless steel • Unit shall have marine edge on three sides. Enclosure shall be secured to apron using vandal resistant screws • Exposed exterior surfaces shall have a Hand-Blended Just Finish. Underside of bowl and top shall be sound deadened • ADA Compliant • Vandal Resistant

CWH-2524

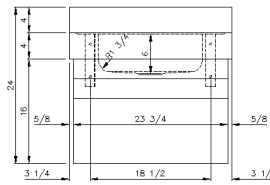
Fittings included with this unit (as shown): See Below



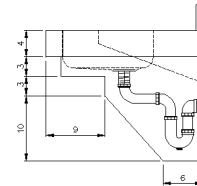
VANDAL RESISTANT



TOP VIEW



FRONT VIEW



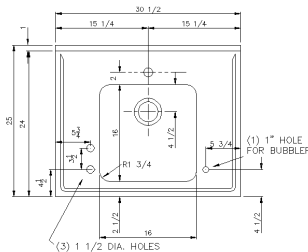
SIDE VIEW

SPECIFICATIONS - STAINLESS STEEL SINK TOP with LAMINATE ENCLOSURE

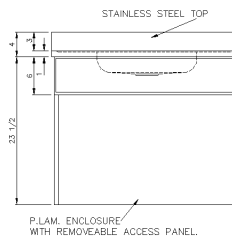
Top constructed of 16 gauge type 304 stainless steel • Bowl of 18 gauge stainless steel seamless drawn construction • Top shall have marine edge on three sides • Exposed exterior surfaces shall have a Hand-Blended Just Finish • Underside of bowl and top shall be sound deadened • Enclosure of flat black casework laminate construction • ADA Compliant

CSWH-3025

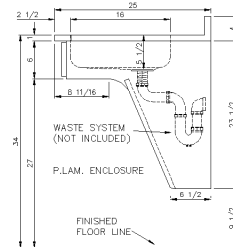
Fittings included with this unit (as shown): See Below



TOP VIEW



FRONT VIEW



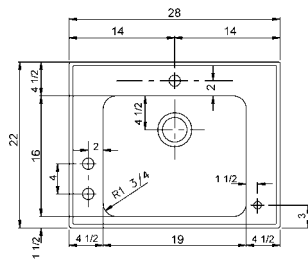
SIDE VIEW

SPECIFICATIONS - LAMINATE TOP and ENCLOSURE/STAINLESS STEEL BOWL

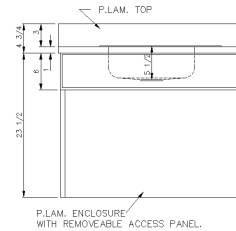
Top and enclosure of flat black casework laminate construction • Bowl of 18 gauge stainless steel seamless drawn construction • Top flange and interior of bowl to have a Hand-Blended Just Finish • Underside of bowl shall be sound deadened • ADA Compliant

CPWH-3025

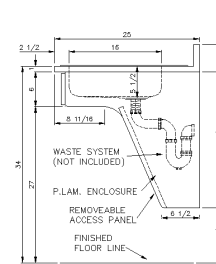
Fittings included with this unit (as shown): See Below



TOP VIEW



FRONT VIEW



SIDE VIEW

FITTINGS INCLUDED WITH THESE UNITS (as shown): J-1176-R-M-VR ADA Compliant, concealed offset faucet, JSB-10-VR ADA Compliant, Vandal Resistant Bubbler, J-ADA-35-SSF-VR Vandal resistant stainless steel flat grid strainer and body.

Faucet shall be JUST J1176-R-M-VR with 5-1/2" reach, PVD chrome finished gooseneck swivel spout, with vandal resistant aerator and handles • Bubbler shall be JUST JSB-10-VR type 304 Stainless Steel, Vandal resistant angle stream bubbler. The unit shall have a replaceable self-closing cartridge • Activation shall require less than 5lb. force, as required by ADA and CABO/ANSI A117.1-1992 specifications • Drain fittings shall be JUST J-ADA-35-SSF-VR stainless steel body, stainless steel flat grid strainer and 1-1/2" O.D. chrome plated waste arm 12" long



CUSTOM SINK AND COUNTERTOP FABRICATION

LARGE 12-STATION GANG WASH AND SHELF
AVAILABLE IN 4-6-8-10-12 STATIONS

DUAL-COMPARTMENT PHOTO LAB SINKS
WITH CABINET AT BOTH ENDS

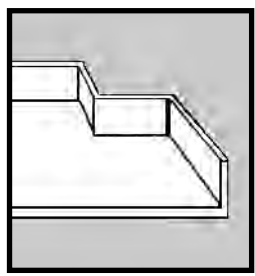


CUSTOM TOPS - SPECIAL OPTIONS

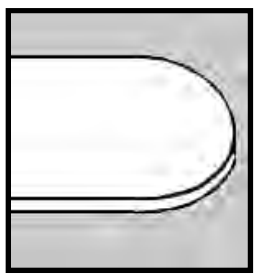
Why are Just products the choice of specifiers?

Each top is fabricated from 16 gauge type 304 18-8 stainless steel, bowls of 18 gauge stainless steel or heavier, providing greater resistance to dents and abuse than thinner gauge reinforced products by others • Drainboard areas are reinforced with 16 gauge mild steel channels to help prevent oil canning and spring back • Units with or without bowls or raised marine edge are welded and finished to provide a superior quality seamless appearance • Drainboards, when required, are double-pitched to the bowl **without** the use of creases or seams, and can be applied to an area as small as 6" long • Interior vertical corners of the sink have a 1-1/2" radius, while horizontal corners of the bowl are 15/16" radius • These radii provide superior cleaning ability while allowing the user greater capacity • Fully Hand-Blended Just satin finish • Underside fully sound deadened to insulate for sound and reduce condensation • Wood frame for mounting to cabinet

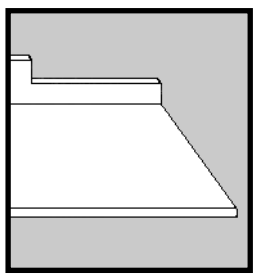
Below is a small sampling of the more than thirty features and capabilities Just Manufacturing can add to most any sink or countertop application. Contact your local JUST representative for further information and pricing.



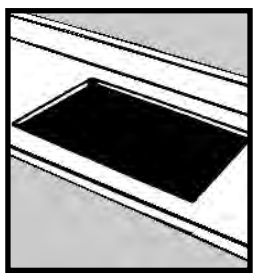
Cutout for columns and pipe chases.



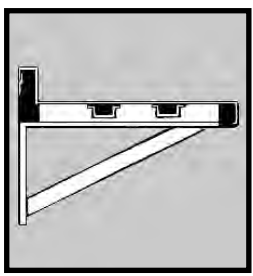
Full radius ends on flat counters.



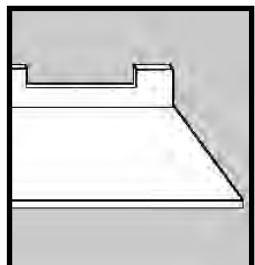
Partial backsplash notches for cabinets or windows.



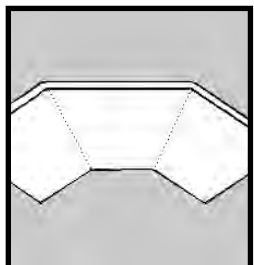
Openings for appliances or laboratory equipment.



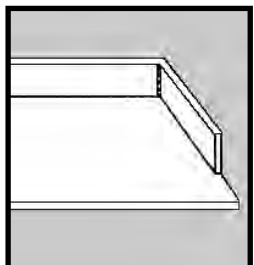
Stainless steel tubular wall brackets for support.



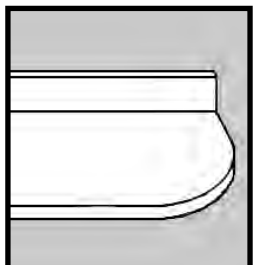
Full cutout in back for utilities or fixtures.



Angled counters and sink tops.



Partial end splashes.



Radius corners on counters with backsplashes.



Aprons on front and sides, offset or integral.



MARQUIS TOPS

SPECIFICATIONS - MARQUIS SINK TOPS

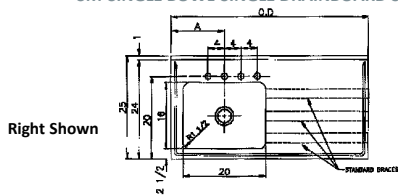
Seamless welded construction of 18 gauge type 304 stainless steel • Bowl with anti-splash rim seamless welded to top • Drainboard double-pitched to bowl without the use of creases • Straight-sided compartment provides greater capacity • Standard understructural braces of 16 gauge mild steel • Underside coated to insulate for sound and reduce condensation • Standard wood frame • Unit polished with a Hand-Blended Just Finish • Drain punch #35 centered for Just J-35 cup strainers

DM-72-34

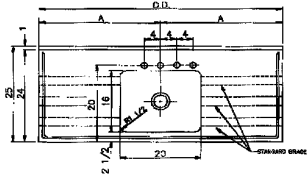
Shown with: JTR-51 Faucet, JB-1500 Soap Dispenser, JB-99 Drain



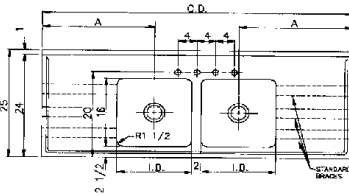
SM-SINGLE BOWL-SINGLE DRAINBOARD SERIES



SM-SINGLE BOWL-DOUBLE DRAINBOARD SERIES



DM-DOUBLE BOWL-DOUBLE DRAINBOARD SERIES



SINGLE BOWL - SINGLE DRAINBOARD				
Model No.	O.D. ¹	BOWL-I.D. ²	A	Depth
SM-42-20-L ³ or R ³	42	16 x 20	13	7-1/2
SM-48-20-L ³ or R ³	48	16 x 20	13	7-1/2

SINGLE BOWL - DOUBLE DRAINBOARD				
Model No.	O.D. ¹	BOWL-I.D. ²	A	Depth
SM-54-20	54	16 x 20	27	7-1/2
SM-60-20	60	16 x 20	30	7-1/2
SM-66-20	66	16 x 20	33	7-1/2
SM-72-20	72	16 x 20	36	7-1/2
SM-84-20	78	16 x 20	42	7-1/2
SM-96-20	96	16 x 20	48	7-1/2

DOUBLE BOWL - DOUBLE DRAINBOARD				
Model No.	O.D. ¹	BOWL-I.D. ²	A	Depth
DM-48-34	48	16 x 16	15	7-1/2
DM-60-29	60	16 x 13-1/2	22	7-1/2
DM-66-29	66	16 x 13-1/2	25	7-1/2
DM-66-34	66	16 x 16	24	7-1/2
DM-72-29	72	16 x 13-1/2	28	7-1/2
DM-72-34	72	16 x 16	27	7-1/2
DM-84-34	84	16 x 16	33	7-1/2
DM-96-34	96	16 x 16	39	7-1/2

¹ O.D. - Overall Dimensions (Left-to-Right)

² I.D. - Inside Dimensions (Front-to-Back X Left-to-Right)

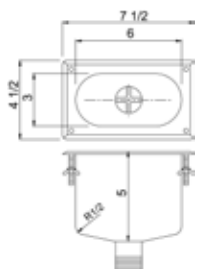
³ Suffix "L" or "R" indicates drainboard on left or right end

All dimensions shown in inches.

CUP SINKS

JUST cup sinks are ideal for the ready disposal of liquids and distillation in the laboratory • Sink and drain fabricated of type 316 stainless steel • Drain consists of 1-1/2" I.P.S. stainless steel pipe welded to sink with integral crossbar strainer • The top sink flange and interior surfaces polished with a Hand-Blended Just Finish • Round cup sinks are 16 gauge • Oval cup sinks are 18 gauge

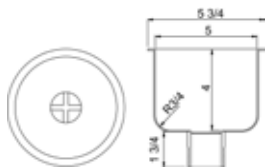
A-41962



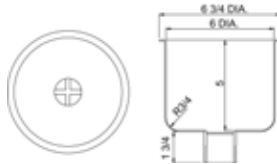
A-41963



A-28066

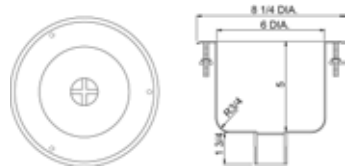


A-28065 CUP SINK

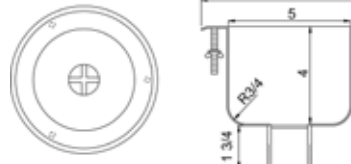


A-28066

A-37734



A-39056 CUP SINK

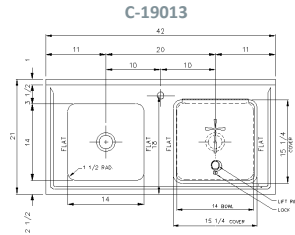
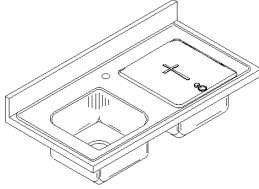


A-37734

SACRISTY SINKS

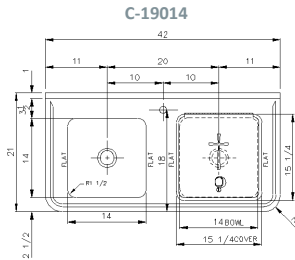
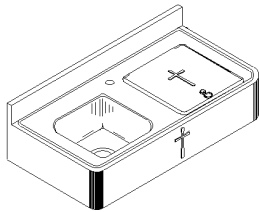
C-19013 CABINET MOUNTED SACRISTY SINK

Seamless welded construction, top of 16 gauge type 304 stainless steel, bowl and hinged cover of 18 gauge type 304 stainless steel • Bowl with anti-splash rim seamless welded to top • Underside coated to insulate for sound and reduce condensation • Exposed surfaces polished with a Hand-Blended Just Finish • Cover supplied with lock and keys • Standard wood frame for cabinet mounting • Drain punch for J-15 and J-15-FS drains unless otherwise specified • Hinged cover available over left or right bowl, must be specified



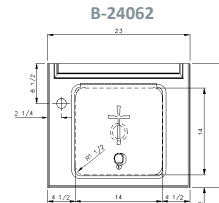
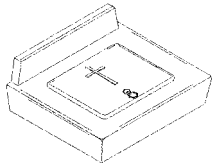
C-19014 WALL MOUNTED SACRISTY SINK

Seamless welded construction, top of 16 gauge type 304 stainless steel, bowl and hinged cover of 18 gauge type 304 stainless steel • Bowl seamless welded to top providing anti-splash rim • Underside coated to insulate for sound and reduce condensation • Exposed surfaces polished with a Hand-Blended Just Finish • Cover supplied with lock and keys • Includes two mild steel wall brackets, painted gray, for wall mounting and one wall clip • Drain punch for J-15 and J-15-FS unless otherwise specified • Hinged cover available over left or right bowl, must be specified



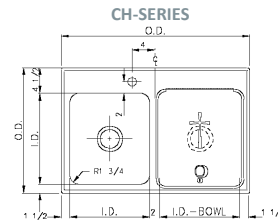
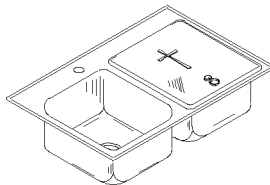
B-24062 WALL MOUNTED SACRISTY SINK

Top, bowl and cover fabricated of 18 gauge type 304 stainless steel, bowl and hinged cover of 18 gauge type 304 stainless steel, polished with a Hand-Blended Just Finish • Bowl seamless welded to top with anti-splash rim • Underside coated to insulate for sound and reduce condensation • Cover supplied with lock and keys • Drain punch for J-15-FS unless otherwise specified • Furnished with integral flange and one clip for wall mounting



CH-SERIES TOP MOUNTED

Seamless die-drawn construction of 18 gauge type 304 stainless steel • Interior and top surfaces polished with a non-porous Hand-Blended Just Finish • Fully coated underside insulates for sound and reduce condensation • Drain punch #35 for Just J-35 and J-35-FS unless otherwise specified • Specify cover location over left or right bowl, and faucet punchings • Self-rimming top mount Grip-Rim Plus with stainless steel channels



FAUCET AND DRAINS

J-906



Single lever, deck-mounted faucet with PVD lifetime finish.

JB-99



Stainless steel basket strainer

SACRISTY SINKS - 18 GAUGE - 'L' or 'R' INDICATES COVER LOCATION		
Model No.	O.D. ¹	I.D. ²
CH-17537-A-GR-L or R	17-1/2 x 37	11-1/2 x 16
CH-1829-A-GR-L or R	18 x 29	12 x 12
CH-2228-A-GR-L or R	22 x 28	16 x 11-1/2
CH-2233-A-GR-L ³ or R	22 x 33	16 x 14
CH-2243-A-GR-L or R	22 x 43	16 x 19

SPECIFY FAUCET PUNCHINGS

¹ O.D. - Overall Dimensions (Front-to-Back X Left-to-Right)

² I.D. - Inside Dimensions (Front-to-Back X Left-to-Right)

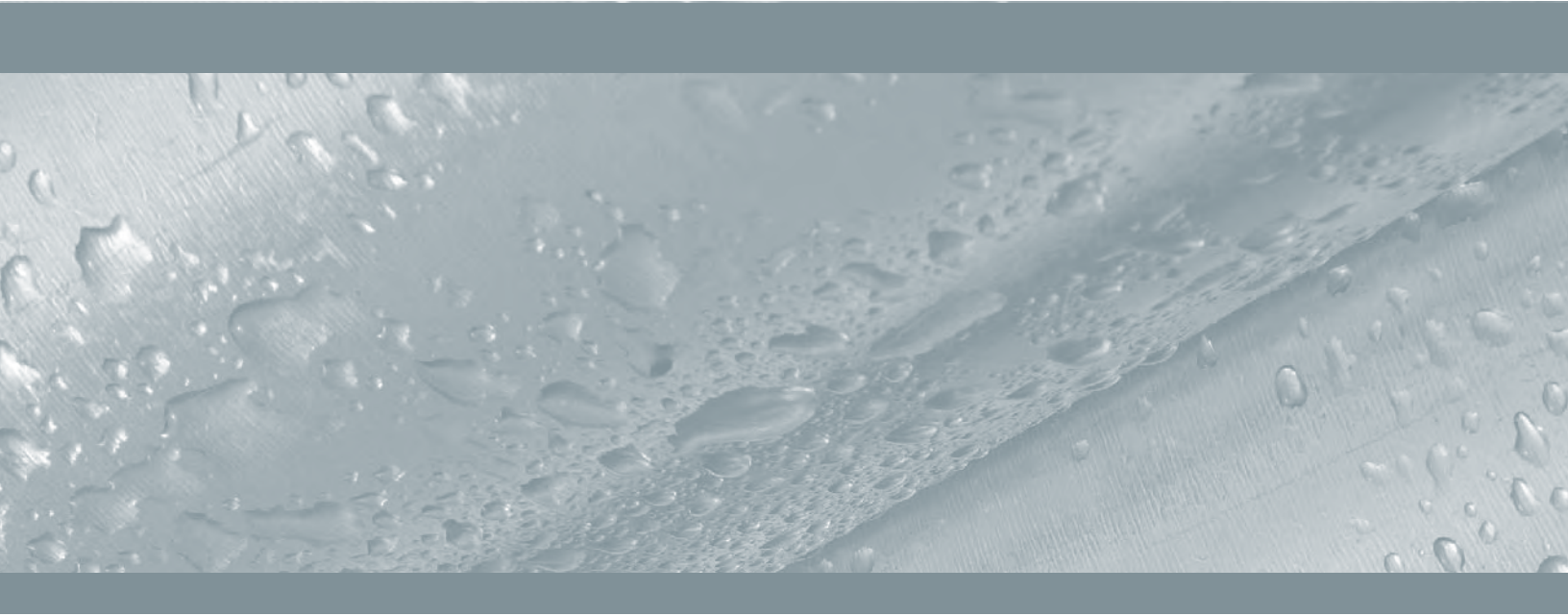
³ Side flanges 1-15/16. Partition 1-1/8.

All dimensions shown in inches.



INDEX

MODEL NUMBER	PAGE	MODEL NUMBER	PAGE	MODEL NUMBER	PAGE	MODEL NUMBER	PAGE
A-18664-S	17	ARR-ADA-2135-A-GR	5	JS-122-T	17	NSFB-360-24RL	13
A-18664-T	17	ARR-ADA-2137-A-GR	5	JS-122-TF	17	NSFB-372	13
A-18664-TF	17	ARR-ADA-2143-A-GR	5	JS-20	18	NSFB-372-24R or L	13
A-18665	17	ARR-ADA-2145-A-GR	5	JS-45-TGA	7	NSFB-372-24RL	13
A-18665-S	17	ARR-ADA-2151-A-GR	5	JS-47-TGSA	7, 18	NSFB-384	13
A-18665-TCB	17	ARR-ADA-2157-A-GR	5	JS-48-TA1	13, 14, 15, 18	NSFB-390	13
A-18665-TMX	17	ARR-ADA-2163-A-GR	5	JSFVR-5	7	OIF-ADA-1013	13
A-18665-TVb	17	B-21429	21	JSGN-6-AC or B	21, 22	OIR-ADA-1013	13
A-18666	21	B-21429-S	21	JSGN-6M-AC or B	16	OLF-ADA-1619	13
A-18666-S	21	B-24062	26	JSL-100-AC or B	12	OLR-ADA-1619	13
A-18666-T	21	B-33213	20	JSL-300-AC or B	12	QST-54	6
A-18666-TF	21	C-19013	26	JSL-46-AC or B	7, 18	SB-124	15
A-28066	25	C-19014	26	JT-150	7	SB-124-24R or L	15
A-33338	22	C-2523	20	JT-200	13, 14, 15	SB-124-24RL	15
A-33338-S	22	CH-17537-A-GR-L or R	26	JTM-47	7, 12	SB-130	15
A-33338-T	22	CH-1829-A-GR-L or R	26	JTN-150	7	SB-130-24R or L	15
A-35929	21	CH-2228-A-GR-L or R	26	JV-1139-A	22	SB-130-24RL	15
A-35929-T	21	CH-2233-A-GR-L3 or R	26	JV-1139-A-W4	12	SB-136	15
A-37734	25	CH-2243-A-GR-L or R	26	JVB-1200	18, 20	SB-136-24R or L	15
A-41962	25	CIF-ADA-12	13	MN-108D	15	SB-136-24RL	15
A-41963	25	CIF-ADA-14	13	MN-108P	15	SB-142	15
A-46427	19	CIF-ADA-15	13	MN-138D	15	SB-148	15
A-46665	19	CIR-ADA-12	13	MN-36	15	SB-154	15
A-46666	19	CIR-ADA-14	13	MN-60	15	SB-160	15
A-46712	19	CIR-ADA-15	13	MN-62L	15	SB-166	15
A-46712-S	19	CPWH-3025	23	MN-62R	15	SB-172	15
A-47699	20	CSWH-3025	23	MN-90	15	SB-178	15
A-544-912-2E-P2-S	8	CWH-2524	23	NSFB-124	13	SB-184	15
A-544-912-2E-P2-TA	8	DM-72-34	25	NSFB-124-24R or L	13	SB-190	15
A-544-912-2E-P2-V	8	HCL-23520	22	NSFB-124-24RL	13	SB-230	15
A-544-912-2E-S	8	HCL-23520-S	22	NSFB-130	13	SB-230-24R or L	15
A-544-912-P2-S	9	HCL-23520-T	22	NSFB-130-24R or L	13	SB-230-24RL	15
A-544-912-P2-V	9	J-115-FS	22	NSFB-130-24RL	13	SB-236	15
A-544-912-PT-V	9	J-1174-KS	22	NSFB-136	13	SB-236-24R or L	15
A-544-912-S	9	J-1174-R	22	NSFB-136-24R or L	13	SB-236-24RL	15
A-544-912-TA	9	J-127	20	NSFB-136-24RL	13	SB-242	15
A-544-912-TA-2E	8	J-15-FS	7	NSFB-142	13	SB-242-24R or L	15
A-544-FS-SD	10	J-251	20	NSFB-148	13	SB-242-24RL	15
A-544-FS-SD-P1-S	10	J-35	18	NSFB-154	13	SB-248	15
A-544-FS-SD-P1-V	10	J-35-BLA-"2"	13, 14, 15	NSFB-160	13	SB-248-24R or L	15
A-544-FS-T	10	J-35-SSF	18	NSFB-166	13	SB-254	15
ARB-2435-A-GR	4	J-4820	18	NSFB-172	13	SB-254-24R or L	15
ARB-2437-A-GR	4	J-4820-S	18	NSFB-178	13	SB-254-24RL	15
ARB-2443-A-GR	4	J-514	18	NSFB-184	13	SB-260	15
ARB-2445-A-GR	4	J-6020	18	NSFB-190	13	SB-260-24R or L	15
ARB-2451-A-GR	4	J-6020-S	18	NSFB-230	13	SB-260-24RL	15
ARB-2457-A-GR	4	J-7220	18	NSFB-230-24R or L	13	SB-266	15
ARB-2463-A-GR	4	J-7220-S	18	NSFB-230-24RL	13	SB-272	15
ARB-ADA-2435-A-GR	5	J770-1-S	16	NSFB-236	13	SB-278	15
ARB-ADA-2437-A-GR	5	J770-2-S	16	NSFB-242	13	SB-284	15
ARB-ADA-2443-A-GR	5	J770-3-S	16	NSFB-242-24R or L	13	SB-290	15
ARB-ADA-2445-A-GR	5	J-906	26	NSFB-242-24RL	13	SB-345	15
ARB-ADA-2451-A-GR	5	J-9620	18	NSFB-248	13	SB-345-24R or L	15
ARB-ADA-2457-A-GR	5	J-9620-S	18	NSFB-248-24R or L	13	SB-354	15
ARB-ADA-2463-A-GR	5	J-981	21	NSFB-248-24RL	13	SB-354-24R or L	15
ARL-2135-A-GR	4	J-ADA-115-FS	12, 22	NSFB-254	13	SB-360	15
ARL-2137-A-GR	4	J-ADA-952	22	NSFB-254-24R or L	13	SB-360-24R or L	15
ARL-2143-A-GR	4	JB-99	26	NSFB-254-24RL	13	SB-360-24RL	15
ARL-2145-A-GR	4	JCW-202	13, 14, 15	NSFB-260	13	SB-372	15
ARL-2151-A-GR	4	JCW-203	13, 14, 15	NSFB-260-24R or L	13	SB-372-24R or L	15
ARL-2157-A-GR	4	JFV-320	18	NSFB-260-24RL	13	SB-372-24RL	15
ARL-2163-A-GR	4	JFVC-301	7, 18	NSFB-266	13	SB-384	15
ARL-ADA-2135-A-GR	5	JH-1	20	NSFB-272	13	SB-390	15
ARL-ADA-2137-A-GR	5	JH-4	20	NSFB-278	13	SL-ADA-1617-A-GR	13
ARL-ADA-2143-A-GR	5	JKV-400	18	NSFB-284	13	SL-ADA-17519-A-GR	13
ARL-ADA-2145-A-GR	5	JLT-30-S	11	NSFB-290	13	SL-ADA-2019-A-GR	13
ARL-ADA-2151-A-GR	5	JLT-48-S	11	NSFB-345	13	SLF-ADA-1617-A-GR	13
ARL-ADA-2157-A-GR	5	JLT-72-S	11	NSFB-345-24R or L	13	SLF-ADA-17519-A-GR	13
ARL-ADA-2163-A-GR	5	JLT-84-S	11	NSFB-345-24RL	13	SLF-ADA-2019-A-GR	13
ARR-2135-A-GR	4	JM-300	12	NSFB-354	13	SPDT-6130-42	7
ARR-2137-A-GR	4	JM-310	12	NSFB-354-24R or L	13	SPLT-54	6
ARR-2143-A-GR	4	JMH-3	20	NSFB-354-24RL	13	STI-6154-42	6
ARR-2145-A-GR	4	JPR-501	7	NSFB-360	13	TST-48	6
ARR-2151-A-GR	4	JS-10	18	NSFB-360-24R or L	13		
ARR-2157-A-GR	4	JS-122	17				
ARR-2163-A-GR	4	JS-122-S	17				



j u s t m a n u f a c t u r i n g

9 2 3 3 k i n g s t r e e t
f r a n k l i n p a r k , i l 6 0 1 3 1

8 4 7 . 6 7 8 . 5 1 5 0
j u s t m f g . c o m