



Supplement

The following supplementary materials are available for this article: Pang, Z., Y.-L. Wang, N. Mantri, Y. Wang, X.-J. Hua, Y.-P. Quan, X. Zhou, Z.-D. Jiang, Z.-C. Qi, H.-F. Lu 2022. Molecular phylogenetic relationships and taxonomy position of 161 *Camellia* species in China. *Taiwania* 67(4): 560-570. doi: [10.6165/tai.2022.67.560](https://doi.org/10.6165/tai.2022.67.560)

Table S1. Samples information of genus *Camellia*. All sample are cultivated in the International Camellia Species Garden at Jinhua City, Zhejiang Province, China and deposited in the herbarium of Zhejiang Normal University (ZNU).

Sub-genera	Sections	Species Name	No.	Voucher	Herbarium	Coll. Date
Protocamellia	Archeamellia	<i>Camellia granthamiana</i>	C01	H. B. Dai 200610190101	ZNU	2006/10/19
Protocamellia	Archeamellia	<i>Camellia albogigas</i>	C02	H. B. Dai 200610190201	ZNU	2006/10/19
Camellia	Camellia	<i>Camellia longicaudata</i>	C03	Q. F. Peng & B. Jiang 2006102001	ZNU	2006/10/20
Camellia	Camellia	<i>Camellia apolyodonta</i>	C04	Q. F. Peng & X. Y. Lin 2006041191	ZNU	2006/4/11
Camellia	Camellia	<i>Camellia subintegra</i>	C05	Q. F. Peng & X. Y. Lin 2006041161	ZNU	2006/4/11
Camellia	Camellia	<i>Camellia oligophlebia</i>	C07	Q. F. Peng 200603931	ZNU	2006/3/9
Camellia	Camellia	<i>Camellia bailinshanica</i>	C08	Q. F. Peng 200603921	ZNU	2006/3/9
Camellia	Camellia	<i>Camellia albosericea</i>	C09	Q. F. Peng 200603911	ZNU	2006/3/9
Camellia	Camellia	<i>Camellia saluenensis</i>	C10	Q. F. Peng & B. Jiang 200610901	ZNU	2006/10/9
Camellia	Camellia	<i>Camellia bambusifolia</i>	C11	Q. F. Peng 200603891	ZNU	2006/3/8
Camellia	Camellia	<i>Camellia pitardii</i> var. <i>alba</i>	C12	Q. F. Peng 200603811	ZNU	2006/3/8
Camellia	Camellia	<i>Camellia pitardii</i>	C14	Q. F. Peng & B. Jiang 200610801	ZNU	2006/10/8
Camellia	Camellia	<i>Camellia stictoclada</i>	C15	Q. F. Peng & B. Jiang 200610903	ZNU	2006/10/9
Camellia	Camellia	<i>Camellia brevicolumna</i>	C16	Q. F. Peng 200603781	ZNU	2006/3/7
Camellia	Camellia	<i>Camellia reticulata</i>	C17	Q. F. Peng 200603711	ZNU	2006/3/7
Camellia	Camellia	<i>Camellia lungshenensis</i>	C18	Q. F. Peng & B. Jiang 200610771	ZNU	2006/10/7
Camellia	Camellia	<i>Camellia magniflora</i>	C19	Q. F. Peng 200603761	ZNU	2006/3/7
Camellia	Camellia	<i>Camellia compressa</i>	C20	Q. F. Peng 200603751	ZNU	2006/3/7
Camellia	Camellia	<i>Camellia phellocapsa</i>	C21	Q. F. Peng 200603742	ZNU	2006/3/7
Camellia	Camellia	<i>Camellia semiserrata</i> var. <i>albiflora</i>	C23	Q. F. Peng & X. Y. Lin 200604721	ZNU	2006/4/7
Camellia	Camellia	<i>Camellia trichosperma</i>	C25	Q. F. Peng & X. Y. Lin 200604691	ZNU	2006/4/7
Camellia	Camellia	<i>Camellia jinshajiangica</i>	C26	Q. F. Peng 200603601	ZNU	2006/3/6
Camellia	Camellia	<i>Camellia omeiensis</i>	C27	Q. F. Peng 200603611	ZNU	2006/3/6
Camellia	Camellia	<i>Camellia polyodonta</i>	C28	Q. F. Peng 200603621	ZNU	2006/3/6
Camellia	Camellia	<i>Camellia lanosituba</i>	C29	Q. F. Peng 200603631	ZNU	2006/3/6
Camellia	Camellia	<i>Camellia longigyna</i>	C30	Q. F. Peng 200603641	ZNU	2006/3/6
Camellia	Camellia	<i>Camellia lapidea</i>	C31	Q. F. Peng 200603651	ZNU	2006/3/6
Camellia	Camellia	<i>Camellia phelloderma</i>	C32	Q. F. Peng 200603661	ZNU	2006/3/6
Camellia	Camellia	<i>Camellia mairei</i>	C33	Q. F. Peng 200603671	ZNU	2006/3/6
Camellia	Camellia	<i>Camellia brachygyna</i>	C34	Q. F. Peng 200603871	ZNU	2006/3/6
Camellia	Camellia	<i>Camellia villosa</i>	C35	Q. F. Peng 200603681	ZNU	2006/3/6
Camellia	Camellia	<i>Camellia tunganica</i>	C36	Q. F. Peng 200603881	ZNU	2006/3/6
Camellia	Camellia	<i>Camellia hunanica</i>	C37	Q. F. Peng & B. Jiang 2006101051	ZNU	2006/10/10
Camellia	Camellia	<i>Camellia delicata</i>	C38	Q. F. Peng 2006031041	ZNU	2006/3/10
Camellia	Camellia	<i>Camellia concina</i>	C39	Q. F. Peng & B. Jiang 2006101011	ZNU	2006/10/10
Camellia	Camellia	<i>Camellia hilisciflora</i>	C40	Q. F. Peng 2006031001	ZNU	2006/3/10
Camellia	Camellia	<i>Camellia lienshanensis</i>	C41	Q. F. Peng & X. Y. Lin 2006041171	ZNU	2006/4/11
Camellia	Camellia	<i>Camellia borealiyunnanica</i>	C42	Q. F. Peng 200602041	ZNU	2006/2/4
Camellia	Camellia	<i>Camellia tenuivalvis</i>	C43	Q. F. Peng 200603981	ZNU	2006/3/9
Camellia	Paracamellia	<i>Camellia rusticana</i>	C44	Q. F. Peng & B. Jiang 2006101141	ZNU	2006/10/11
Camellia	Camellia	<i>Camellia paucipetala</i>	C45	Q. F. Peng 200603971	ZNU	2006/3/9
Camellia	Camellia	<i>Camellia chekiangoleosa</i>	C46	Q. F. Peng & B. Jiang 2006101111	ZNU	2006/10/11
Camellia	Camellia	<i>Camellia edithae</i>	C47	Q. F. Peng & B. Jiang 200610961	ZNU	2006/10/9
Camellia	Oleifera	<i>Camellia gauchowensis</i>	C48	J. B. Shen 200612230401	ZNU	2006/12/23
Camellia	Oleifera	<i>Camellia lanceoleosa</i>	C49	J. B. Shen 200612230501	ZNU	2006/12/23
Camellia	Oleifera	<i>Camellia sasanqua</i>	C50	J. B. Shen 200612230601	ZNU	2006/12/23



Camellia	Oleifera	<i>Camellia vietnamensis</i>	C51	X. Y. Lin 200701280701	ZNU	2007/1/28
Camellia	Oleifera	<i>Camellia oleifera</i>	C52	J. B. Shen 200612230802	ZNU	2006/12/23
Camellia	Oleifera	<i>Camellia pubifurfuracea</i>	C53	H. E. Tian 200610170901	ZNU	2006/10/17
Camellia	Oleifera	<i>Camellia latipetiolata</i>	C54	H. E. Tian 200610171001	ZNU	2006/10/17
Camellia	Oleifera	<i>Camellia crapnelliana</i>	C55	H. E. Tian 200610171101	ZNU	2006/10/17
Thea	Chrysantha	<i>Camellia nitidissima</i> var. <i>longistyla</i>	C56	Q. F. Peng 200603966	ZNU	2006/3/9
Thea	Chrysantha	<i>Camellia nitidissima</i> var. <i>microcarpa</i>	C58	Q. F. Peng 200603869	ZNU	2006/3/8
Thea	Chrysantha	<i>Camellia parvipetala</i>	C59	Q. F. Peng 200603862	ZNU	2006/3/8
Thea	Chrysantha	<i>Camellia limonia</i>	C61	S. S. Hong 2011040135	ZNU	2011/4/1
		<i>Camellia</i> sp	C62	Q. F. Peng 200603753	ZNU	2006/3/7
Thea	Chrysantha	<i>Camellia pubipetala</i>	C65	Q. F. Peng 200603861	ZNU	2006/3/8
Camellia	Camellia	<i>Camellia uraku</i>	C66	Q. F. Peng 200603941	ZNU	2006/3/9
Thea	Chrysantha	<i>Camellia liberofilamenta</i>	C67	Q. F. Peng 200603883	ZNU	2006/3/8
Thea	Chrysantha	<i>Camellia pingaoensis</i>	C68	S. S. Hong 2011040137	ZNU	2011/4/1
Camellia	Tuberculata	<i>Camellia rubituberculata</i>	C69	B. Jiang & Q. F. Peng 06062302	ZNU	2006/6/23
Camellia	Oleifera	<i>Camellia multibracteata</i>	C71	H. E. Tian 200610171201	ZNU	2006/10/17
Camellia	Oleifera	<i>Camellia furfuracea</i>	C72	H. E. Tian 200610171301	ZNU	2006/10/17
Camellia	Paracamellia	<i>Camellia grijsii</i>	C73	J. B. Shen 200701122001	ZNU	2007/1/12
Camellia	Oleifera	<i>Camellia oblata</i>	C74	Q. F. Peng 200610221401	ZNU	2006/10/22
Camellia	Paracamellia	<i>Camellia yuhsienensis</i>	C75	J. B. Shen 200701122102	ZNU	2007/1/12
Camellia	Paracamellia	<i>Camellia confusa</i>	C76	J. B. Shen 200612232201	ZNU	2006/12/23
Camellia	Oleifera	<i>Camellia gaudichaudii</i>	C77	H. E. Tian 200610171501	ZNU	2006/10/17
Camellia	Oleifera	<i>Camellia gigantocarpa</i>	C79	Q. F. Peng 200610221601	ZNU	2006/10/22
Camellia	Oleifera	<i>Camellia octopetala</i>	C80	Q. F. Peng 200610221701	ZNU	2006/10/22
Camellia	Paracamellia	<i>Camellia fluviatilis</i>	C81	X. Y. Lin 200701282401	ZNU	2007/1/28
Camellia	Paracamellia	<i>Camellia hiemalis</i>	C83	J. B. Shen 200612232602	ZNU	2006/12/23
Camellia	Paracamellia	<i>Camellia shensiensis</i>	C85	J. B. Shen 200701122901	ZNU	2007/1/12
Camellia	Luteoflora	<i>Camellia luteoflora</i>	C86	S. S. Hong 2011040131	ZNU	2011/4/1
Camellia	Pseudocamellia	<i>Camellia szechuanensis</i>	C87	S. S. Hong 2011040101	ZNU	2011/4/1
Camellia	Pseudocamellia	<i>Camellia chungkingensis</i>	C88	S. S. Hong 2011040102	ZNU	2011/4/1
Thea	Thea	<i>Camellia sinensis</i>	C89	J. B. Shen & J. L. Fu 2006111120501	ZNU	2006/11/11
Camellia	Pseudocamellia	<i>Camellia trichocarpa</i>	C90	S. S. Hong 2011040103	ZNU	2011/4/1
Camellia	Pseudocamellia	<i>Camellia ilicifolia</i>	C91	J. B. Shen & Q. F. Peng 06110501	ZNU	2011/4/1
Thea	Thea	<i>Camellia longtousanica</i>	C92	S. S. Hong 2011040106	ZNU	2011/4/1
Thea	Glaberrima	<i>Camellia</i> <i>kwangtungensis</i>	C93	B. Jiang & Q. F. Peng 2006111121501	ZNU	2006/11/11
Thea	Glaberrima	<i>Camellia danzaiensis</i>	C94	B. Jiang & Q. F. Peng 2006111121601	ZNU	2006/11/11
Thea	Thea	<i>Camellia makuanica</i>	D10	J. B. Shen 200701123010	ZNU	2007/1/12
Camellia	Paracamellia	<i>Camellia miyagii</i>	D11	J. B. Shen 200701123001	ZNU	2007/1/12
Thea	Thea	<i>Camellia atrothea</i>	D12	J. B. Shen & J. L. Fu 20061119101	ZNU	2006/11/19
Camellia	Paracamellia	<i>Camellia tenii</i>	D13	X. Y. Lin 200701223102	ZNU	2007/1/22
Thea	Thea	<i>Camellia tetracocca</i>	D14	J. B. Shen & Q. F. Peng 2006111806	ZNU	2006/11/18
Thea	Thea	<i>Camellia tachangensis</i>	D16	J. B. Shen & Q. F. Peng 2006111118501	ZNU	2006/11/11
Thea	Thea	<i>Camellia kwangsiensis</i>	D17	J. B. Shen & J. L. Fu 20061118201	ZNU	2006/11/18
Camellia	Tuberculata	<i>Camellia tuberculata</i>	D18	Q. F. Peng 05112301	ZNU	2005/11/23
Camellia	Tuberculata	<i>Camellia lipingensis</i>	D19	B. Jiang & Q. F. Peng 06062301	ZNU	2006/6/23
Camellia	Tuberculata	<i>Camellia rhytidocarpa</i>	D20	B. Jiang 06111201	ZNU	2006/11/12
Camellia	Tuberculata	<i>Camellia rhytidophylla</i>	D21	B. Jiang 06111202	ZNU	2006/11/12
Camellia	Tuberculata	<i>Camellia leyeensis</i>	D23	B. Jiang 06111203	ZNU	2006/11/12
Camellia	Tuberculata	<i>Camellia anlungensis</i>	D25	Q. F. Peng 05112302	ZNU	2005/11/23
Thea	Longissima	<i>Camellia hekouensis</i>	D27	B. Jiang & Q. F. Peng 06122801	ZNU	2006/12/28
Camellia	Tuberculata	<i>Camellia acutiperulata</i>	D28	B. Jiang & Q. F. Peng 06062303	ZNU	2006/6/23
Camellia	Tuberculata	<i>Camellia acuticalyx</i>	D29	B. Jiang & Q. F. Peng 06062304	ZNU	2006/6/23
Thea	Longipedicellata	<i>Camellia longipedicellata</i>	D30	B. Jiang & Q. F. Peng LHF2006111117701	ZNU	2006/11/11
Camellia	Tuberculata	<i>Camellia atuberculata</i>	D31	B. Jiang & Q. F. Peng 06090401	ZNU	2006/9/4



Camellia	Tuberculata	<i>Camellia obovatifolia</i>	D32	B. Jiang & Q. F. Peng 06062305	ZNU	2006/6/23
Thea	Longipedicellata	<i>Camellia liuzhouensis</i>	D33	S. S. Hong 2011040105	ZNU	2011/4/1
Camellia	Tuberculata	<i>Camellia neriifolia</i>	D34	B. Jiang & Q. F. Peng 06090402	ZNU	2006/9/4
Metacamellia	Eriandria	<i>Camellia lawii</i>	D35	S. S. Hong 2011040127	ZNU	2011/4/1
Camellia	Tuberculata	<i>Camellia parvimuricata</i>	D36	B. Jiang & Q. F. Peng 06090404	ZNU	2006/9/4
Camellia	Tuberculata	<i>Camellia hupehensis</i>	D37	Q. F. Peng 05112303	ZNU	2005/11/23
Metacamellia	Theopsis	<i>Camellia tsofui</i>	D38	S. S. Hong 2011040126	ZNU	2011/4/1
Metacamellia	Theopsis	<i>Camellia parvicaudata</i>	D39	S. S. Hong 2011040125	ZNU	2011/4/1
Metacamellia	Theopsis	<i>Camellia lancicalyx</i>	D40	S. S. Hong 2011040125	ZNU	2011/4/1
Metacamellia	Theopsis	<i>Camellia parviovata</i>	D41	S. S. Hong 2011040124	ZNU	2011/4/1
Metacamellia	Theopsis	<i>Camellia campanisepala</i>	D42	S. S. Hong 2011040123	ZNU	2011/4/1
Metacamellia	Theopsis	<i>Camellia septempetala</i>	D44	S. S. Hong 2011040121	ZNU	2011/4/1
Metacamellia	Theopsis	<i>Camellia parvilimba</i>	D45	S. S. Hong 2011040119	ZNU	2011/4/1
Metacamellia	Theopsis	<i>Camellia euryoides</i>	D47	S. S. Hong 2011040118	ZNU	2011/4/1
Metacamellia	Theopsis	<i>Camellia rosthorniana</i>	D48	S. S. Hong 2011040117	ZNU	2011/4/1
Metacamellia	Theopsis	<i>Camellia synaptica</i>	D49	S. S. Hong 2011020102	ZNU	2011/2/1
GordoniaEllis		<i>Gordonia longicarpa</i>	D51	Q. F. Peng 2006011506	ZNU	2006/1/15
TutcheriaDunn		<i>Tutcheria hexalocularia</i>	D54	Q. F. Peng 2006061902	ZNU	2006/6/19
Metacamellia	Theopsis	<i>Camellia costei</i>	D56	S. S. Hong 2011040116	ZNU	2011/4/1
Metacamellia	Theopsis	<i>Camellia handelii</i>	D57	S. S. Hong 2011040115	ZNU	2011/4/1
Metacamellia	Theopsis	<i>Camellia subacutissima</i>	D58	S. S. Hong 2011040138	ZNU	2011/4/1
Metacamellia	Theopsis	<i>Camellia acutissima</i>	D59	S. S. Hong 2011040114	ZNU	2011/4/1
Metacamellia	Theopsi	<i>Camellia parvicuspidata</i>	D60	S. S. Hong 2011040113	ZNU	2011/4/1
Metacamellia	Theopsis	<i>Camellia minutiflora</i>	D61	S. S. Hong 2011040112	ZNU	2011/4/1
Metacamellia	Theopsis	<i>Camellia buxifolia</i>	D62	S. S. Hong 2011040111	ZNU	2011/4/1
Metacamellia	Theopsis	<i>Camellia lipoensis</i>	D63	S. S. Hong 2011040110	ZNU	2011/4/1
Metacamellia	Theopsis	<i>Camellia forrestii</i>	D64	S. S. Hong 2011040109	ZNU	2011/4/1
Metacamellia	Theopsis	<i>Camellia cuspidata</i> var. <i>grandiflora</i>	D66	S. S. Hong 2011040108	ZNU	2011/4/1
Metacamellia	Theopsis	<i>Camellia cuspidata</i>	D67	S. S. Hong 2011011505	ZNU	2011/1/15
Metacamellia	Theopsis	<i>Camellia macrosepala</i>	D68	S. S. Hong 2011040107	ZNU	2011/4/1
Thea	Chrysantha	<i>Camellia achrysantha</i>	D69	S. S. Hong 2011040136	ZNU	2011/4/1
Thea	Chrysantha	<i>Camellia impressinervis</i>	D70	Q. F. Peng 200603956	ZNU	2006/3/9
Thea	Chrysantha	<i>Camellia tunghinensis</i>	D72	Q. F. Peng 200603953	ZNU	2006/3/9
Metacamellia	Eriandria	<i>Camellia salicifolia</i>	D73	S. S. Hong 2011040130	ZNU	2011/4/1
Metacamellia	Eriandria	<i>Camellia cordifolia</i>	D75	S. S. Hong 2011040128	ZNU	2011/4/1
Camellia	Paracamellia	<i>Camellia brevistyla</i>	D77	J. B. Shen 200612232501	ZNU	2006/12/23
Thea	Chrysantha	<i>Camellia huana</i>	D78	Q. F. Peng 200603951	ZNU	2006/3/9
Thea	Chrysantha	<i>Camellia ptilosperma</i>	D80	Q. F. Peng 200603978	ZNU	2006/3/9
Camellia	Camellia	<i>Camellia glabriperulata</i>	D81	Q. F. Peng 2006031061	ZNU	2006/3/10
Camellia	Camellia	<i>Camellia pitardii</i> var. <i>yunnanica</i>	D82	Q. F. Peng 200603821	ZNU	2006/3/8
Camellia	Camellia	<i>Camellia xifongensis</i>	D83	Q. F. Peng 200603831	ZNU	2006/3/8
Camellia	Camellia	<i>Camellia crassissima</i>	D85	Q. F. Peng & X. Y. Lin 2006041181	ZNU	2006/4/11
Camellia	Camellia	<i>Camellia liberistamina</i>	D86	Q. F. Peng & X. Y. Lin 2006041091	ZNU	2006/4/10
Camellia	Camellia	<i>Camellia magnocarpa</i>	D87	Q. F. Peng & X. Y. Lin 2006041081	ZNU	2006/4/10
Thea	Chrysantha	<i>Camellia longgangensis</i> var. <i>patens</i>	D89	Q. F. Peng 200603852	ZNU	2006/3/8
Thea	Chrysantha	<i>Camellia euphlebica</i>	D90	S. S. Hong 2011040134	ZNU	2011/4/1
Thea	Chrysantha	<i>Camellia nitidissima</i>	D91	Q. F. Peng 200603868	ZNU	2006/3/8
Thea	Chrysantha	<i>Camellia lungzhouensis</i>	D92	Q. F. Peng 200603867	ZNU	2006/3/8
Camellia	Camellia	<i>Camellia japonica</i>	E12	Q. F. Peng & B. Jiang 2006101131	ZNU	2006/10/11
Camellia	Paracamellia	<i>Camellia puniceiflora</i>	E14	J. B. Shen 200701123001	ZNU	2007/1/12
GordoniaEllis		<i>Gordonia acuminata</i>	E16	J. B. Shen 200701122022	ZNU	2007/1/12
Protocamellia	Stereocarpus	<i>Camellia yunnanensis</i>	C95	Q. F. Peng 200612100401	ZNU	2006/12/10
Thea	Thea	<i>Camellia parvisepala</i>	C96	J. B. Shen & J. L. Fu 2006111121001	ZNU	2006/11/11
Thea	Thea	<i>Camellia sinensis</i> var. <i>assamica</i>	C97	J. B. Shen & Q. F. Peng 2006111118301	ZNU	2006/11/11
Thea	Thea	<i>Camellia fangchengensis</i>	C98	J. B. Shen & J. L. Fu 2006111120801	ZNU	2006/11/11



Thea	Thea	<i>Camellia ptilophylla</i>	D01	J. B. Shen & J. L. Fu 2006111120601	ZNU	2006/11/11
Thea	Thea	<i>Camellia angustifolia</i>	D02	S. S. Hong 2011050302	ZNU	2011/5/3
Thea	Thea	<i>Camellia jingyunshanica</i>	D03	S. S. Hong 2011050305	ZNU	2011/5/3
Thea	Thea	<i>Camellia gymnogyna</i>	D04	S. S. Hong 2011010303	ZNU	2011/1/3
Thea	Thea	<i>Camellia leptophylla</i>	D05	J. B. Shen & J. L. Fu 2006111119601	ZNU	2006/11/11
Camellia	Paracamellia	<i>Camellia phaeoclada</i>	D06	J. B. Shen 200701123602	ZNU	2007/1/12
Camellia	Paracamellia	<i>Camellia odorata</i>	D07	X. Y. Lin 200701283502	ZNU	2007/1/28
Thea	Thea	<i>Camellia taliensis</i>	D08	J. B. Shen & J. L. Fu 2006111119401	ZNU	2006/11/11
Camellia	Camellia	<i>Camellia weiningensis</i>	D09	S. S. Hong 2011040139	ZNU	2011/4/1

Table S2. Sequences of PCR primers.

Gene	Length	Description	Location	Name of Primers	Primer sequence 5'-3'
<i>matK</i>	1500bp	maturase K (<i>matK</i>) gene	cp gene: 2,047 -> 3,546	<i>matKF</i>	ATTCGAACCCGGAAGTAGTC
				<i>matKR</i>	ATTATGGAATGGAGGTGGATG
<i>rbcl</i>	1428bp	ribulose bisophosphate carboxylase	cp gene: 57,115 -> 58,542	<i>rbcl20F</i>	CTAAAGCAAGTGTTGGATTCAAAG
				<i>rbcl1406R</i>	AATTCAAATTTGATCTCCTTCCATA
<i>ycf1</i>	5622bp	photosystem I assembly protein <i>ycf1</i> protein CDS	cp gene: 126,464 - > 132,085	<i>ycf1_66f</i>	TTGTGGTCGGACTCTA
				<i>ycf1_2954r</i>	AACGGAATGCCCTTGA
<i>trnL-F</i>	982bp	tRNA-Leu (<i>trnL</i>) gene and <i>trnL-trnF</i> intergenic spacer, partial sequence	cp gene:49,614 -> 50,596	<i>trnL</i>	CGAAATCGGTAGACGCTACG
				<i>trnF</i>	ATTTGAACTGGTGACACGAG

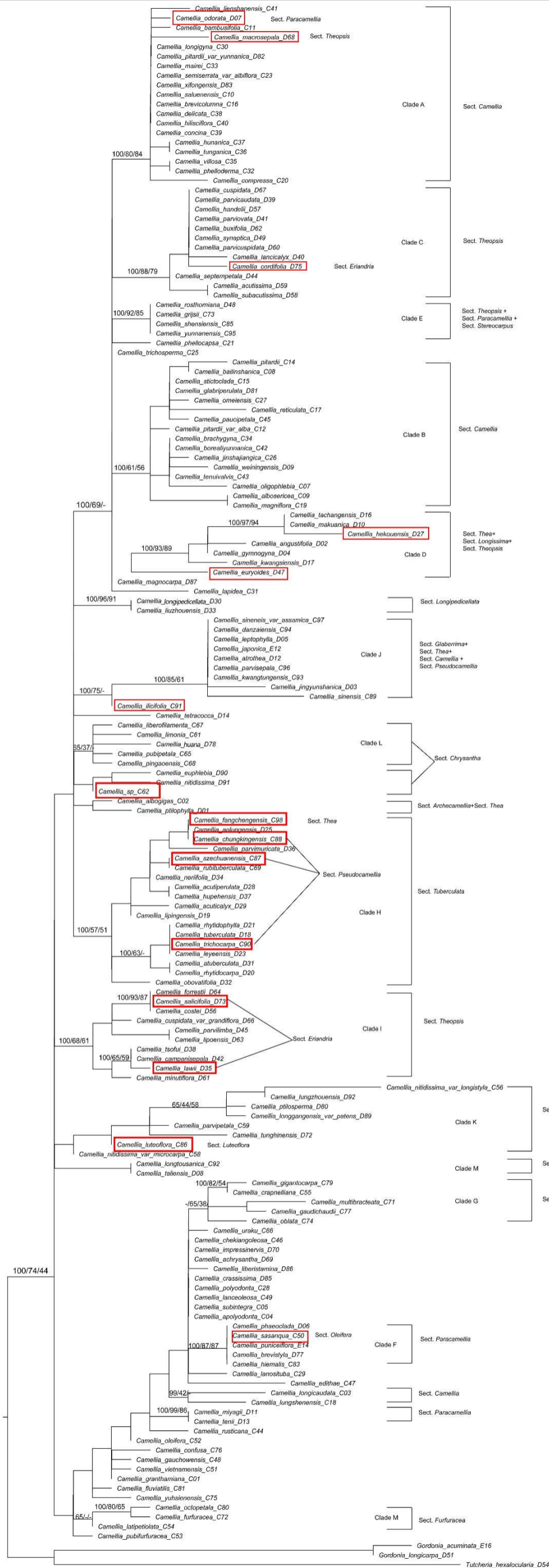


Fig. S1. ML phylogenetic tree of *Camellia* inferred from all combined four sequenced chloroplast DNA regions (*matK*, *rbcL*, *ycf1*, *trnL-F*). Bayesian posterior probability, ML bootstrap and MP bootstrap (PP/ML-BS/MP-BS) were indicated on the major branch of the tree, species in the red block are the minority section on the corresponding branch.

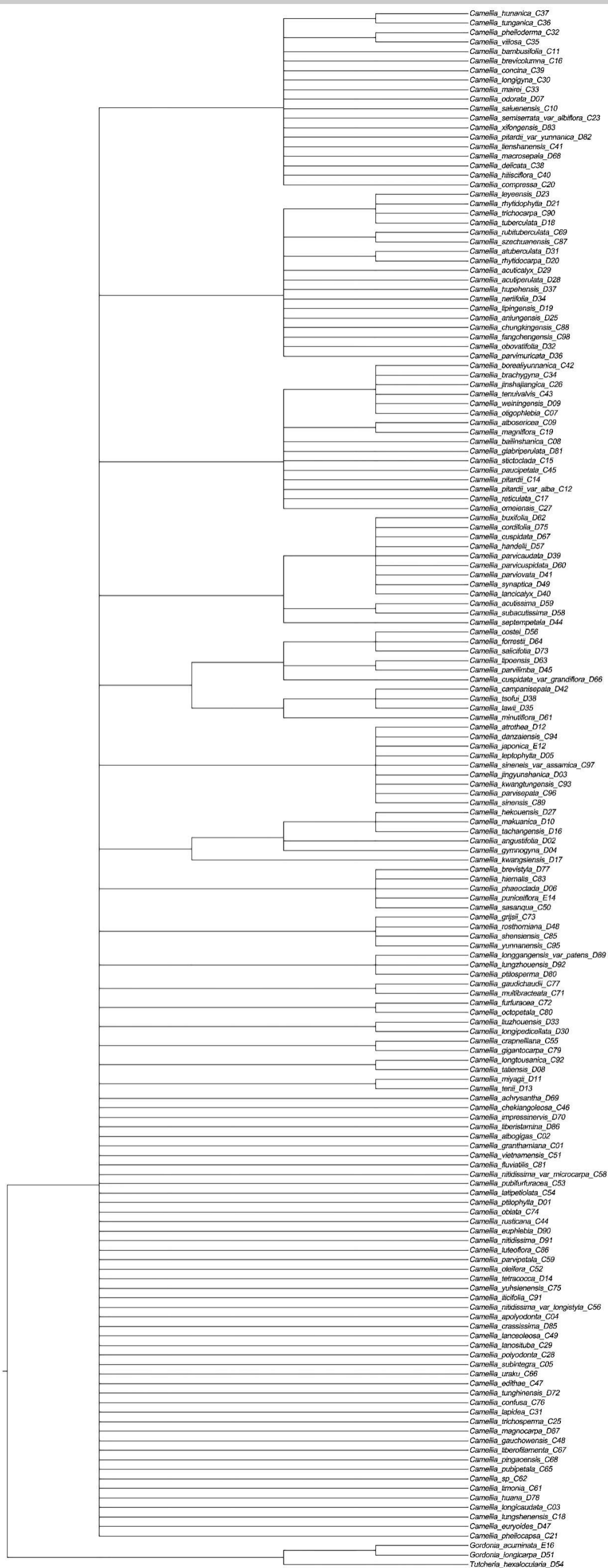


Fig. S2. Topology of phylogenetic tree yielded from MP analyses based on chloroplast DNA fragments data (*matK*, *rbcl*, *ycf1*, *trnL-F*). Tree length=417, CI=0.479, RI=0.696, RC=0.33.