



3M™ SPP3

19” Fibre Optic Patch Panels



The new patch panel range SPP3-E is designed as a universal fibre optic patch panel for direct connector termination or as a splice drawer to store pigtails. Multiple entry ports, allow the use of 2-4 fibre horizontal cable as well as up to 48 fibre backbone cable. The cable can be fixed either via PG-Glands or cable ties. Breakout manifolds as well as splice trays can be fixed in dedicated areas of the panel.

The panels have a sliding mechanism with a defined stop, which prevents the drawer from being pulled out completely and offers the installer a comfortable handling, for both, new installation and rearrangements or extensions.

The SPP3-E program offers three different versions.

- Empty panels
- Panels with pre-terminated couplings
- Panels which are fully preassembled with couplings, pigtails and splice trays

Features

- Sliding design
- Multiple cable entry ports
- Fixing for breakout manifold
- Fixing thread for splice tray (DIN)
- Port numbering on front panel
- Un-detachable hand-tightening screws
- Universal cage nuts and screws for 19” frames
- For all common connector standards

Benefits

- Easy handling, installer friendly
- Handles horizontal- and backbone cable
- Handles also mini breakout cable
- Comfortable fibre management
- Easy traceability
- No tool required to open the panel
- Comfortable installation
- One panel fits all applications

Specifications:

Design features:

- Sliding 1U patch panel with defined stop for the drawer
- Un-detachable knurled nut to fix the drawer to the housing
- Fixed front panel, not exchangeable

Included accessories:

- Universal cage nuts, screws and washers for 19" mounting
- Instruction manual

Housing material: Steel

Dimensions: 44 x 483 x 250 mm, (H x W x D), (19", 1U)

Colour: RAL 7035 Light grey

Surface: Powder coated, slightly structured

Port numbering: Black, screen printed

Ordering information

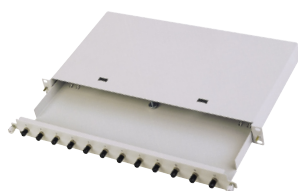
Ref.-No.

Empty patch panels



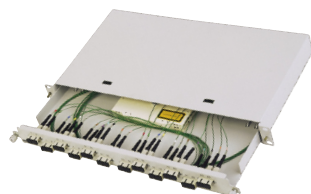
1U for 12 ST	1 ea	SPP3-E-1T
1U for 24 ST	1 ea	SPP3-E-2T
1U for 12 SC Simplex	1 ea	SPP3-E-1CS
1U for 24 SC Simplex	1 ea	SPP3-E-2CS
1U for 6 SC Duplex	1 ea	SPP3-E-6CD
1U for 12 SC Duplex	1 ea	SPP3-E-1CD

Pre-assembled patch panels with couplings



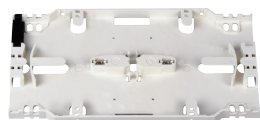
1U for 24 SC Duplex	1 ea	SPP3-E-2CD
1U with 12 ST MM Couplers	1 ea	SPP3-E-1T-M
1U with 24 ST MM Couplers	1 ea	SPP3-E-2T-M
1U with 6 SC D MM Couplers	1 ea	SPP3-E-6C-DM
1U with 12 SC D MM Couplers	1 ea	SPP3-E-1C-DM
1U with 24 SC D MM Couplers	1 ea	SPP3-E-2C-DM
1U with 12 SC S SM Couplers	1 ea	SPP3-E-1C-SS

Completely assembled with couplings, colour coded pigtails, 1-4 splice trays with integrated 900µm strain relief: (1)



1U with 24 SC S SM Couplers	1 ea	SPP3-E-2C-SS
1U w/12 ST w/Pigtails 50/125 2m w/Cassette, pigtails stripped and marked	1 ea	SPP3-E-1T-MP5
1U w/24 ST w/Pigtails 50/125 2m w/Cassette, pigtails stripped and marked	1 ea	SPP3-E-2T-MP5
1U w/12 ST w/Pigtails 62,5/125 2m w/Cassette, pigtails stripped and marked	1 ea	SPP3-E-1T-MP6
1U w/24 ST w/Pigtails 62,5/125 2m w/Cassette, pigtails stripped and marked	1 ea	SPP3-E-2T-MP6
1U w/12 SC S w/Pigtails 9/125 2m w/Cassette, pigtails stripped and marked	1 ea	SPP3-E-1C-SP9
1U w/6 SC D w/ Pigtails 50/125 2m w/Cassette, pigtails stripped and marked	1 ea	SPP3-E-6C-DMP5
1U w/12 SC D w/Pigtails 50/125 2m w/Cassette, pigtails stripped and marked	1 ea	SPP3-E-1C-DMP5
1U w/6 SC D w/ Pigtails 62,5/125 2m w/Cassette, pigtails stripped and marked	1 ea	SPP3-E-6C-DMP6
1U w/12 SC D w/Pigtails 62,5/125 2m w/Cassette, pigtails stripped and marked	1 ea	SPP3-E-1C-DMP6

Accessories:



DIN Splice Tray 8 x 155 x 92 mm (H x W x D) with 900µm strain relief, RAL 9001	29026-500 31
Lid for DIN Splice Tray 2 x 155 x 92 mm (H x W x D), RAL 9001	29025-503 31

(1) These products are available in Q2/2005-03-07

3M is trademark of 3M Company

Important Notice

3M does not accept responsibility or liability, direct or consequential arising from reliance upon any information provided and the user should determine the suitability of the products for their intended use. Nothing is the statement will be deemed to exclude or restrict 3M's liability for death or personal injury arising from its negligence. All questions of liability relating to 3M products are governed by the seller's terms of sale subject where applicable to the prevailing law.

If any goods supplied or processed by or on behalf of 3M prove on inspection to be defective in material or workmanship, 3M will (at its option) replace the same or refund to the Buyer the price of the goods or services. Except as set out above, all warranties and conditions, whether express or implied, statutory or otherwise are excluded to the fullest extent permissible at law.



3M Telecommunications

Europe, Middle East & North Africa

c/o Quante AG

Carl-Schurz-Strasse 1 • 41453 Neuss • Germany

Tel: ++49 (0)2131 / 14-5999

Fax: ++49 (0)2131 / 14-5998

Internet: www.3MTelecommunications.com