

the



# PLUMIE

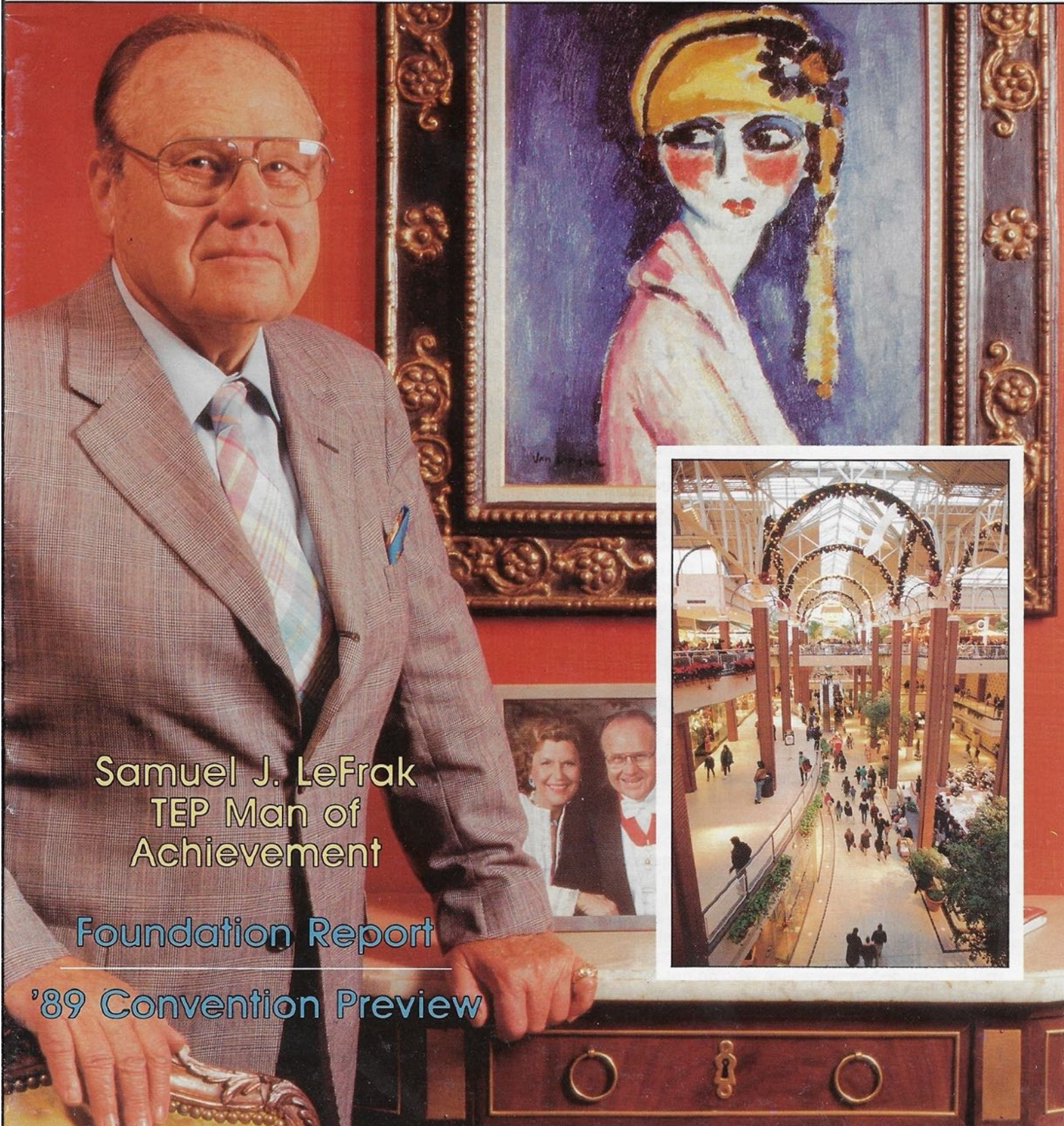
THE TAU EPSILON PHI FRATERNITY

WINTER, 1989

VOLUME LXXVI

USPS 436260

NUMBER 3



Samuel J. LeFrak  
TEP Man of  
Achievement

Foundation Report

'89 Convention Preview

## THE CONSUL'S MESSAGE

### "Greek Perestroika"



I had the privilege of attending the National Interfraternity Conference (NIC) Annual Meeting this past December. Presidents, Executive Directors and Foundation Presidents of more than 50 national fraternities met to discuss issues of mutual benefit and concern. Perhaps no issue dominated our discussions more than the future existence of the fraternity system and in particular, our system of pledging.

The fraternity system is at a crossroad in its history. While the system, including TEP, has enjoyed unparalleled growth in recent years, it has also been under attack (often justifiably) by those who believe we are now a "dinosaur" with no place in the 21st century.

The prime focus has been on hazing. It's been all over the news media. So called "trash TV" show hosts have been falling all over each other to interview those who have suffered. Fortunately, TEP has not experienced any of the tragedies that now include 44 deaths since 1978 throughout the national system. However, change is warranted now, and it requires the cooperation of all national fraternities — each working with their own chapters, IFC's and college and university administrators.

At our meeting, the NIC Presidents voted as follows:

"The NIC asks each member organization to study alternatives to pledge status in their chapters and to report its position and how such a program can be implemented at the NIC Convention in December of 1989."

The pledging system did not exist until 100 years after the founding of the fraternity system. We must replace it with a system that eliminates the opportunity for hazing — one that forms a basis for developing good brothers — not good pledges. I should also add, not parenthetically, that ALL reactivated chapters and all newly established chapters have been, and will be, founded by members who do not go through a formal pledging period. Indeed, our founders did not pledge TEP.

T. J. Schmitz, Executive Vice President of Tau Kappa Epsilon has stated this case very eloquently:

"The highest human values enunciated in our rituals and creeds have been pushed into the shadows and forgotten in the wake of senseless hazing tragedies.

Because of this profile, fraternities are often unable to recruit the top students now on campus. Many are uninterested in membership. They simply will not risk subjecting themselves to such practices.

Because of hazing and alcohol-related problems, fraternities are now rated among the ten worst risks by the insurance industry.

The most disturbing aspect of all this is that hazing continues despite a massive effort to eradicate it.

The status of 'pledge' or 'associate' sets up a scenario in which new members are often subservient. Sadly, a minority of initiated members take unfair advantage of this relationship.

We have failed. Our system is flawed. It's time for a revolutionary change. We need a new membership structure.

"Without action we may end up as a modern-day example of the dodo bird, extinct because we did not respond to internal problems and environmental changes.

It's time for fraternities to seize the moral high ground. Today, we have no room for associate or pledge status. We must return to the great principles of our heritage and act by collectively taking a new approach."

We should recognize that this issue affects all fraternities — including Tau Epsilon Phi. At TEP's February TEP Grand Council Meeting, I appointed a committee of alumni and undergraduates to study this issue and report their recommendations at our Grand Chapter Convention this August.

I look forward to seeing many of you at Convention '89 in Baltimore this summer!

A handwritten signature in dark ink, appearing to read "Gerald A. Denmark". The signature is fluid and cursive.

Fraternally yours,  
Gerald A. Denmark  
Consul

## the PLUME

Is published quarterly by the Tau Epsilon Phi National Fraternity 3088 Mercer University Drive, suite 200, Atlanta, GA 30341. Second Class Postage paid at Atlanta, GA 30341 and at additional mailing offices. Published at 900 East State St., Athens, Ohio 45701.

The PLUME is the official Educational and Fraternal publication of the Tau Epsilon Phi Fraternity and postage is paid in Atlanta, GA. The annual subscription rate for members and associates is \$15.00 and is included in the National Fraternity's annual membership dues or can be paid for separately.

POSTMASTER: Send address changes to the PLUME 3088 Mercer University Dr., suite 200, Atlanta, GA 30341.

All chapter reports, alumni notes, news stories, photographs, manuscripts, subscriptions and death notices for publication in the PLUME should be sent c/o Editor, the PLUME: 3088 Mercer University Dr., suite 200, Atlanta, GA 30341.

**TAU EPSILON PHI FRATERNITY**  
National Headquarters  
3088 Mercer University Drive  
suite 200  
Atlanta, GA 30341

Jonathan M. Seidel,  
Executive Director & Editor  
Ronald V. Brooks,  
Director of Chapter Services  
Sidney S. Suntag,  
Executive Secretary Emeritus  
Grace Jenkins, Controller  
Marie Garofalo,  
Administrative Assistant  
Cindy Newport,  
Administrative Assistant

(404) 454-8377  
FAX (404) 986-9300

# the PLUME

*The Official Magazine of the Tau Epsilon Phi Fraternity  
Fall/Winter Edition February 1989*

## IN THIS ISSUE

- 4 TEP's Premier Bridgebuilder: Brother Sam LeFrak
- 7 Regional Governor's Profile: Brother Glenn S. Linder (Region III)
- 8 1989 Convention: Destination Baltimore, Maryland
- 9 The TEP Foundation Annual Report
- 23 Addressing the Issues Facing the Fraternity World: A Commentary

## DEPARTMENTS

- 2 From the Consul, Gerald A. Denmark
- 6 Executive Director's Notes
- 7 From TEP's Bald Eagle, Sidney S. Suntag
- 10 TEP Foundation President's Message, Al Versacci
- 18 Chapter Highlights
- 20 Alumni News
- 26 TEP Gifts and Jewelry

## About the Cover

The cover of this issue features Brother Samuel J. LeFrak (Tau Beta), TEP's master builder, posing at home with Kees Van Dongen's "Tete de Femme de Trois Quarts" (c 1920), one of many impressionist and post-impressionist paintings in the LeFrak collection. The inset photo, lower right, is an interior view of Brother LeFrak's Newport Centre mall. See article beginning on page 4.

*Editor's Note: Any alumni who wish to submit articles of interest, photos, news, etc. are requested to send: c/o Editor, The Plume, 3088 Mercer Univ. Dr., Suite 200, Atlanta, GA 30341.*



National  
Interfraternity  
Conference



# TEP's Master Builder

**Samuel J. LeFrak**

■  
*By Sidney S. Suntag  
Executive Secretary Emeritus*

*"Doing for others.  
That's our motto. Hard  
work conquers all. There  
are no shortcuts. That's  
how it works."*



*The LeFrak family coat-of-arms.*

**A**bout three years ago, while visiting New York, I made a point to have lunch with my fraternity brother and good friend of almost 50 years, Brother Sam LeFrak (Tau Beta) Maryland '39. I met him in his spacious offices in the LeFrak Building in Queens, New York, and while in his private suite, I could not help but notice a huge mock-up of a massive

housing project in the planning stages.

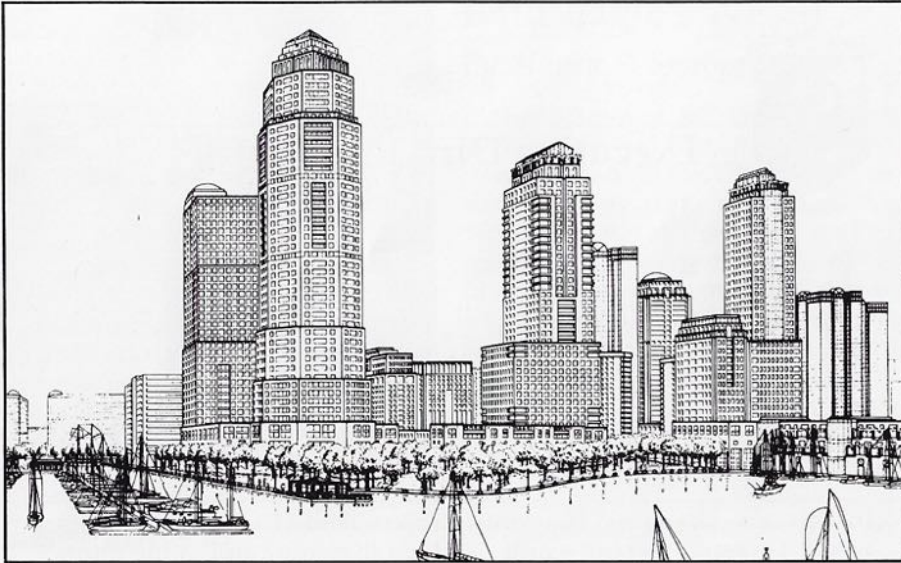
During the many years that I have known Brother LeFrak, I was aware of the incredible number of housing projects that he had built in the New York area, including LeFrak City; the Battery Park Development; among a myriad number of lesser undertakings that had made him the master builder and leading developer of middle-class housing in the nation.

This mock-up that lay before me was so huge that it dwarfed all of Brother LeFrak's previous projects, and I was, of course, curious. He proceeded to describe, in detail, his latest "dream" that was still in its development stages — a new city to grow on the New Jersey shore of the Hudson River, directly across from the World Trade Center in Manhattan. He explained that this area of New Jersey had been the scene of 600 acres of neglected docks, decayed freight yards and abandoned waterfront property that he had purchased.

This property during World War I and II had been busy, as almost all material and troops embarked for the European battlefields from there. As



*Aerial view of a portion of the Newport development with Manhattan skyline across the Hudson. Newport Centre mall (not shown) is located to the lower left of buildings pictured.*



*Architects rendering presenting Newport's dramatic skyline after development is complete.*

a matter of fact, from that very area I left with my regiment for the European theater of operations in September, 1942. However, since the end of World War II, the entire area had been allowed to disintegrate. It was Sam's vision that from this chaotic slum, he could build a modern city that would contain upwards of 15,000 moderate, affordable and luxurious apartments with magnificent views of the Manhattan skyline. Surprisingly, 50% of the land would be devoted to parks, plazas and town squares. Additionally, the area would have three museums, 18 theatres, a world Oceanographic Center (one of Brother LeFrak's pet hobbies) operated by Jacques Cousteau, three hotels, and a 1,000 boat marina off the Hudson River Shore.

In addition, the project would contain 10 million square feet of office and commercial space; 1.2 million square feet of major retail space, including four department stores and 300,000 square feet of boutique and festival shopping.

It was mind boggling and if it had been anyone other than Sam LeFrak who was describing this project, I would not have taken it too seriously. Knowing Sam, however, and the many miracles he had wrought in the housing field throughout his illustri-

ous career, this was not a pipe dream.

And indeed it wasn't. In the months and years that followed, a name was given to the "city from the ashes" — most appropriately, Newport. As I write, the property is nearing completion, and it is a wonder to behold! Once again, Brother LeFrak

*"Samuel J. LeFrak is chairman of the LeFrak Organization. Founded in 1905, the Company is among the largest private building companies in the world, and is known for its commitment to affordable housing."*

accomplished a miracle — not only has he provided housing for upwards of 500,000 people, but he turned the tide on urban blight and decay once again in Metropolitan New York. He is a true Bridgebuilder.

Not surprisingly, he has been honored by foreign governments, the United Nations and in his native land where he has received honors too numerous to describe in this limited space. To commemorate his service to humanity, he has received honor-



*Closeup view of Newport Marina today as construction continues in the background.*

ary degrees from leading universities and two important college buildings have been named in his honor: The LeFrak Classroom Building on the University of Maryland Campus (his alma mater) and the new gymnasium at Amherst College, his son's alma mater.

With his extraordinary busy business activities, Brother LeFrak can still find time for his Fraternity. Almost from the beginning of his rise in his extraordinary career, he has been an active participant in TEP. In the early 1950's he served on the Grand Council and for many years was Chairman of the Fraternity's Honors and Awards Committee. His activity on the latter committee resulted in his establishing the LeFrak Campus Achievement Trophy that continues to be one of the most prized chapter awards issued annually. It also set the stage for the establishment of the Samuel J. LeFrak Scholarship, which is awarded to the undergraduate who best exemplifies Brother LeFrak's creed of excellence in scholarship, extracurricular activity and Fraternity services.

We would think that Brother LeFrak would rest on his laurels, having accomplished so much to give people homes that they could afford and be proud of. Not Sam, because as this PLUME goes to press, he has (in partnership with the City of New York) begun a new \$150,000,000 housing project — this time on the lower east side of New York — an area that had fallen into decay. Twelve hundred units for moderate income families will help to ease the housing crunch that has beset New York in recent years.

In 1960 Brother LeFrak received the ultimate honor from his Fraternity, when he was named TEP Man of the Year. In a ceremony, witnessed by hundreds of his fraternity brothers and their wives, he was clothed with the raiment of this unique honor.

Nor did this end his service to TEP, because in the years since then, he has served with distinction as a Trustee of the TEP FOUNDATION, INC. Sam LeFrak is truly a "Man for All Seasons" and TEP is duly proud of him and his accomplishments.



## Executive Director's Notes



*"It was the best of times.  
It was the worst of times."  
— Charles Dickens*

In this everchanging fraternity world, Dickens' opening words to *A Tale of Two Cities* seem appropriate. While our organization still rides high on the wave of increased interest in Greek life, many staunch opponents are crying out for the end of fraternity life as we have grown to know it. Drastic change is evident in the future.

Due to this climate, it is time for our brothers, undergraduate and alumni alike, to take a stand in order to fortify the future of Tau Epsilon Phi Fraternity. John Kennedy's poignant remarks of commitment to our country ring true 28 years later with regard to our organization. By asking what each of us can do for TEP, we shall all benefit from our involvement and the fraternity will continue to truly prosper. We should all remember the third principle of our Creed . . . SERVICE.

It is my hope that along with the reactivation of so many previously "dormant" chapters, many of our alumni will once again offer assistance to our undergraduates, their chapters and colonies. The strength of our fraternity not only

lies in those young men on our college campuses but with our alumni who so generously devote their time to "Serve for the love of service." The wisdom of age and experience can only help our undergraduates in making those responsible decisions that will affect their lives now and in the future.

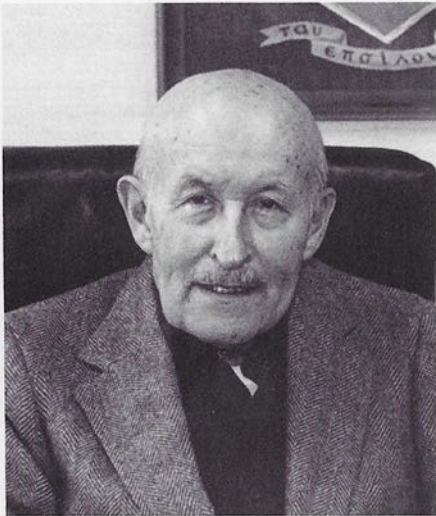
To all those alumni who have already volunteered their time and energy, thank you. The dedication of those brothers has already shown their results in the increased levels of programming, membership, and support exhibited by our chapters this past year.

As our 1989 Grand Chapter Convention nears, I encourage each of you to plan ahead to attend what has the makings of an excellent gathering of TEP brothers, alumni, family and friends. The chosen theme for convention centers around P.R.I.D.E. — Performance, Responsibility, Interaction, Devotion and Excellence. We hope you will all come and take part and show your PRIDE in your association with Tau Epsilon Phi.

I look forward to seeing you in August!

Fraternally,

Jonathan M. Seidel  
Executive Director & Editor



## From the Bald Eagle's Nest

By Sidney S. Suntag

The Fraternity System in its 200 year history has had many ups and downs called "cycles" but none was as devastating as the period between 1968-75 known as the Viet Nam Protest Era and the immediate aftermath of American involvement in the War. During those years, scores of chapters closed their doors, and at least five previously strong Nationals went out of existence altogether via bankruptcy or absorption by "stronger" Nationals.

In the midst of this bleak picture, movements arose in many chapters to radically change fraternity traditions. Some clamored for a new concept which they called "Fra-Sorority" or making fraternities co-ed in membership. They even went so far as to make female students full fledged members, despite such policy being in violation of most National Constitutions. Most, if not all, of the co-ed experiments died out once the "craziness" of the era became history.

One TEP chapter, calling traditional fraternity operations "non-relevant" (a favorite expression of the era) chose to operate as a commune

*continued on pg. 22*

## TEP Travels

By Ronald Brooks,  
Director of Chapter Services

Being on the road now for nearly two semesters, I have had my share of TEP experiences . . . some better than others. But one issue that tends to appear in all of our chapters and colonies helps to keep the fraternity wheels rolling. When a group of undergraduates works together with desire and individual commitment as their only asset, the result is usually a great display of one common trait, TEP SPIRIT. Whether it was always there and is just more obvious or if it

was gone and returned is really not as important as much as it exists now.

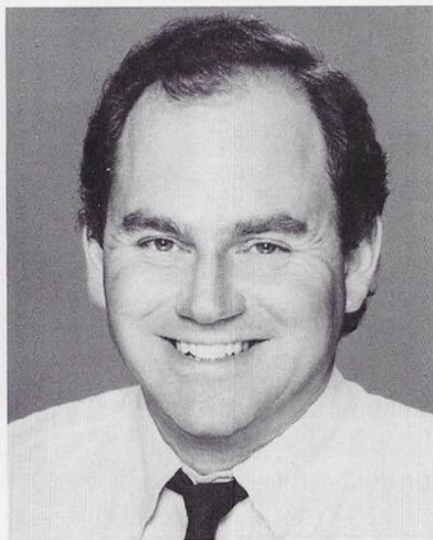
Comparing our fraternity to others is not easy because of many demographic differences. However, in keeping with TEP SPIRIT our undergraduates deserve a hand for it is these areas that truly set us apart. Common Ideals is the first and foremost with each chapter teaching and learning a strong set of values. This promotes a high level of social responsibility and, along with a positive outlook of the International Fraternity combines together to give us that super TEP SPIRIT.

Each brother from every chapter

and colony sees the benefits of fraternity a little bit differently and contributes in his own way. There is one concern though that we all share. The International equation of brotherhood (fraternity) = friendship is common throughout the country with alumni and undergraduates. This Ideal of Friendship along with chivalry and service is very much alive and motivates us all to keep our fraternity going strong and out of trouble!

I can honestly say we have been very fortunate with the few disciplinary situations in the past year — nothing major has come of them. Whether it is because we are still

*continued on pg. 17*



## Regional Governor's Profile

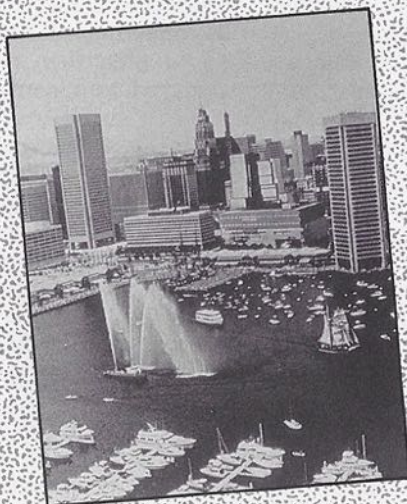
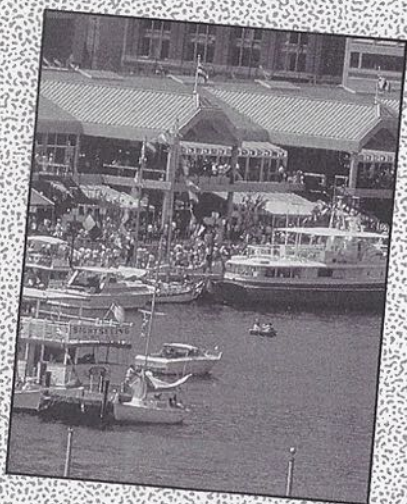
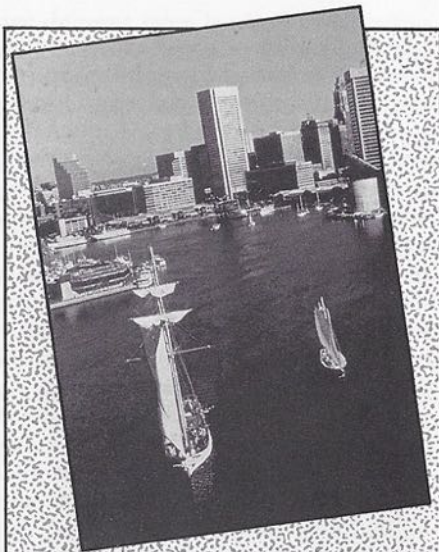
Region III — Brother Glenn S. Linder

In keeping with the PLUME Editorial Board's policy begun in the last issue of the magazine to introduce each of our unsung Regional Governors, this issue it is our pleasure to present Brother Glenn S. Linder, Epsilon Psi (AIC) '76. Brother Linder has served as Regional Governor for Region 3, which includes the Metropolitan New York area for more than a year with distinction and dedication.

As an undergraduate, Brother Linder was Bursar of his chapter and

received the Bursar's Key in recognition of a job well done. He was also named to *Who's Who In American Colleges and Universities*.

Since leaving college he has been an electronic consultant (self-employed) and an actor and model in Radio and TV. He is a member of the Screen Actors Guild; American Federation of TV and Radio Artists, and is a member of N.Y. Veteran Police Association.



## Sharing the Pride — 1989 Convention

**Tau Epsilon Phi's 79th Anniversary  
Convention set for Baltimore, Maryland,  
Aug. 16-20**

**A**ny alumnus or undergraduate who has ever attended a Grand Chapter Convention will tell you that it was truly a memorable experience. This year's convention with its theme of P.R.I.D.E. — Performance, Responsibility, Interaction, Devotion, and Excellence should be no exception.

This year's convention, scheduled for Aug. 16-20 at Baltimore's Stouffer's Harborplace Hotel, is devoted to addressing those themes and issues of concern to the overall fraternity world. A variety of seminars and workshops are scheduled for our undergraduates in order to help them address the changing trends affecting Tau Epsilon Phi and the entire Greek system.

Aside from the important business and legislation to be covered at convention, there will be plenty of time for socializing between our undergraduates, alumni, family and friends. The convention steering committee, chaired by Brothers John Smeyne (Maryland '59) and Ed Raskin

(Maryland '52), has planned a wealth of activities including: sightseeing trips within Baltimore and to Washington and special Chapter Receptions throughout the convention for alumni to spend time with their individual chapter brothers.

The Convention will culminate with our black-tie Convention Banquet Saturday evening. Noted radio and television talk-show host Larry King will be our Keynote Speaker following which he will be presented with honorary membership into our Brotherhood.

The Grand Chapter Convention will afford both alumni and undergraduate brothers the opportunity to renew old friendships and establish new ones keeping with our tradition of FRIENDSHIP, CHIVALRY and SERVICE to Tau Epsilon Phi. So plan on joining your Fraternity Brothers for our 1989 Grand Chapter Convention in Baltimore for a memorable fraternal gathering.

**Look for more information in a special convention mailing soon!**

### COUNT ME IN!!

Please send me more information on TEP's 1989 Convention

Name \_\_\_\_\_ Chapter \_\_\_\_\_

Address \_\_\_\_\_ Grad. Yr. \_\_\_\_\_

City, State, Zip \_\_\_\_\_ Phone ( ) \_\_\_\_\_

I'd like information on:

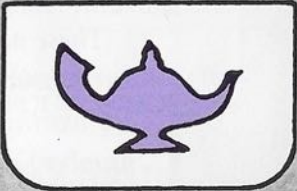
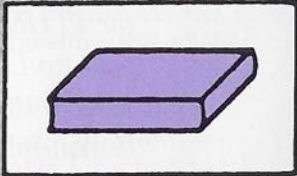
Inclusion in the 1989 Convention Sponsors' Booklet

Hosting a Special Chapter Mini-Reunion

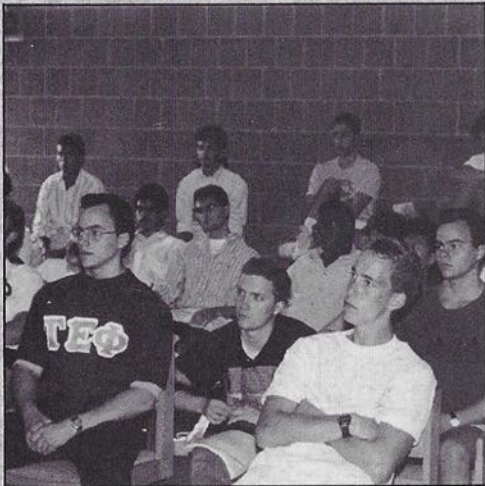
1989 TEP Convention Package (includes: hotel, meals & events)



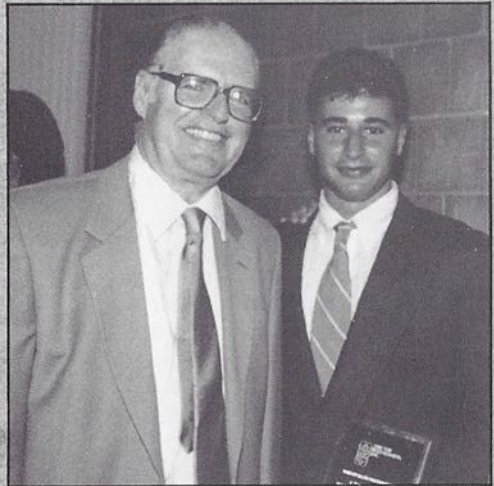
# THE TEP FOUNDATION, INC.



## 1987-88 — Annual Report

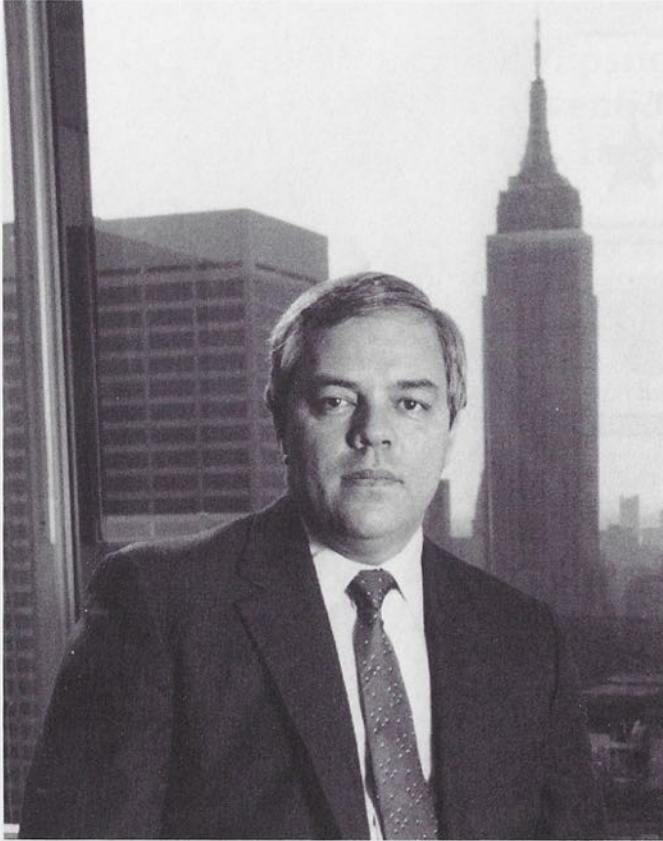


Summer Leadership  
Conclaves



Scholarship and Awards  
Program

## Foundation President's Message



■ Brother Al Versacci, past International Consul, Vice-President for Corporate Training, Amerada-Hess Corporation

*We are happy to report that although the fund-raising drive is only at the midpoint, more contributions (some very substantial) have been received so far than in at least 10 years! The list of contributors, in accordance with their category of donations, is contained elsewhere in this issue of the PLUME. Furthermore, we have received more paid up Life Sponsorships, and brothers who have entered the cycle toward Life Sponsorship. It must be remembered that all income from Life Sponsorship drives go to The TEP Foundation, Inc.*

*These added funds will go a long way to add to our scholarship services to the undergraduates who are worthy and needy through grants (now 28 in number) and emergency aid. Of equal importance, we will be able to expand and improve many critical educational programs for undergraduates. These will include drug and alcohol education, academic achievement, and leadership training. They are all vital for the very survival of our fraternity.*

*This is actually only the beginning of our overall plan to make The TEP Foundation, Inc., the most vibrant and far-reaching educational assistance program in the fraternity system.*

*Elsewhere in this issue are other planned methods of fundraising including a program of asking our alumni to remember The TEP Foundation, Inc., in their wills. Thank you alumni!*

Alfred C. Versacci, President  
The TEP Foundation, Inc.

## Some Thoughts for the Future ...

### Planned Giving Opportunities

Over the years the TEP Fraternity and/or its Foundation, Inc., like the University you attended, solicited your monetary support. Never, however, have you been asked to contribute more than very modest sums as a means of maintaining on-going programs required by our undergraduates. Your response in this limited way has been most helpful and appreciated.

In this era of continuing extraordinary rise in the costs of education, however, all quasi-scholastic operations, including Fraternity, for the long term, must seek far more assistance than ever before. We, the TEP leaders, must therefore devise ways and means of meeting this challenge for the future.

Certainly, we hope that you will continue your modest support, even though it is only a stop gap measure. What we need to know, however, is that in the future there will be ready funds available for scholarship assistance, housing, leadership schools, etc., to keep pace with the ever-burgeoning educational situation.

After you have provided financial security for your entire family, you may consider long-term assistance to the TEP FOUNDATION, INC., via the following tried and true methods:

1. **Your Last Will and Testament:** The TEP FOUNDATION, INC., can be named as a beneficiary in your will in several simple ways. An outright gift of funds (either a designated dollar amount or percentage of your estate) or property (real or planned) could be specified. The TEP FOUNDATION, INC., can also be named as a remainder beneficiary to receive funds only after specific sums have been passed to named beneficiaries. In an existing will, it is not essential that you draw up a new one if you desire to include the TEP FOUNDATION, INC., as a beneficiary. All that is necessary is that you add an amendment called a "codicil" to your existing will.
2. **Giving Through Life Insurance Policies:** Assign to the TEP FOUNDATION, INC., as beneficiary, a paid-up life insurance policy:
  - Or name the TEP FOUNDATION, INC., as beneficiary on a new or existing life insurance policy with premiums being paid by you as donor during your lifetime.
  - Or assign the dividends that accrue on an old or new life insurance policy to the TEP FOUNDATION, INC., with you as donor continuing to own and control the policy.

In either of the above methods, significant tax benefits can be derived by you, as donor, inasmuch as the TEP FOUNDATION, INC., is a tax deductible organization.

We suggest that you consult your attorneys, to consider these Planned Giving opportunities through the TEP FOUNDATION, INC.

### TEP Foundation Giving Opportunities Expanded

1989 marks the inception of several new TEP Foundation giving programs established by the Board of Trustees and made available to alumni and friends.

**Annual Giving Program:** We are proud to announce the creation of four TEP Foundation Donors' Clubs: The President's Club (\$1,000 or more); Hearts and Links Society (\$100.00 to \$999.99); Helmet and Swords Associates (\$50.00 to \$99.99); The Plume Club (up to \$49.99). Many thanks to those alumni who have already contributed to the future of our Fraternity through the auspices of the TEP Foundation, Inc.

**Planned Giving Program:** Many alumni past and present have remembered Tau Epsilon Phi by establishing long term gifts to the TEP Foundation. It is based upon this growing fraternal good will that the Board of Trustees has embarked upon a program of Planned Giving that includes the opportunity to establish bequests and trusts to the TEP Foundation.

**Dedicated Funds:** The Foundation now boasts over 25 dedicated funds that have been established to honor and memorialize numerous brothers and families who have given of themselves for the benefit of Tau Epsilon Phi. These funds are in turn dedicated to rewarding undergraduates who have excelled in areas such as scholarship, community service, leadership and fraternal service. In the past year alone, two new funds were created and many alumni contributed to previously existing scholarship funds.

We encourage those alumni to remember the TEP Foundation and the benefit they gained from being a member of Tau Epsilon Phi in years past.

1989 TEP FOUNDATION INC.

Endowment Fund Campaign

PRESIDENT'S CLUB

Robert K. Low	Albert Schiff
Michael A. Wolf	Leonard Wolf
Louis J. Taratoot	Bruce J. Scheinberg
E.J. Evans	Mark L. Kay
Gregory M. O'Brien	John Smeyne

HEARTS & LINKS SOCIETY

Frederic I. Braunschweiger	Ronald B. Cohen	Stanley Tate	Lowell R. Glazer	Laurence Bader	Joel D. Rubin
William Berley	Marshall J. Persky	Jerome Schine	Nathan Kates	Bernard Margolius	Jeff Silverbush
Herman H. Wallberg	Bernard B. Eichler	Joseph Farcus	Morris Glesby	A. Bart Lewis	Alfred C. Versacci
Alan Striar	Philip F. Freidman	Edward P. Guttenmacher	Harlan Capin	Harold Leviton	Myron Tanenbaum
Arnold C. Schwartz	Joseph Lipshie	Gerald Rosenthal	Stanley M. Miller	Avrom N. Romm	Robert S. Schiffman
Ross B. Pollack	Alvin I. Schragis	Neil Gordon	Harry A. Finkelman	Robert L. Grand	Walter G. Stacevich
Harris Jacobs	Martin Matalon	Mark Deskin	Alan I. Slonim	Donald Elisburg	David Hoffman
Fredric S. Benamy	Henry Hirsch	Morris Forman	J. Samuel Tenenbaum	Robert J. Petisi	Alan H. Goldsmith
	George Wolly			Richard M. Frome	Jack I. Laveson

HELMET & SWORDS

Donald Moody	Mel Kutchen	Harry Maziar	Victor Schulman	Sheldon D. Katz	Charles Rose
Jerome Berliner	Meyer Winer	Robert Blitz	Stuart Kepets	Floyd H. Jayson	Larry Gursten
Richard B. Barkin	Leonard J. Oguss	Ben Alperstein	Mark H. Cohen	Bernard B. Riman	Harold W. Geisel
Jerry Jacobson	Myron L. Slutsky	Kenneth Topaz	Lee J. Brenner	Glen McCloud	Michael L. Neider
Gene A. Benator	P. Sidney Neuwirth	Jerry Harwin	E. James Judd	Ronn S. Owens	Thomas K. Grzesiek

PLUME CLUB

Stanley I. Schachter	Stuart J. Sinder	Michael Miron	Vinal W. Applebee	Benjamin B. Helfner	Douglas M. Wieder
Joseph Foster	Fred Andrew Levine	Robert S. Maurer	Louis E. Gelt	Bruce H. Prussack	Alan R. Brieter
Jerome J. Jacobs	Andrew J. Peck	David L. Cohen	Barney H. Miller	Jay L. Jaspán	Stanley Abrams
Richard Norman	Bernarr Alan Newman	Barry Dreayer	Gerald N. Fieser	Bertram Shaiman	Joel S. Kazin
Norman Fertig	Eugene Allyn	Paul S. Saltzman	Terry M. Goldberg	I. Budd Rockower	Mark E. Kaminsky
Donald J. Behr	Melvin A. Shikes	Raymond E. Finkel	Millard Spialter	Alan Kovar	Robert J. Gomez
Lewis B. Ward	Alexander Jaret	Roger M. Singer	Joseph C. Hari	John J. Landon	Eugene J. Kobliska
Robert L. Morrison		Michael J. Duber	Joseph F. Spadafino	Paul Goldman	

LIFE SPONSOR'S PROGRAM

■ The following brothers have become Life Members of Tau Epsilon Phi through the TEP Foundation's Life Sponsor Program.

■ ALPHA

Edward Neimeth  
Julian R. Wilhelm  
Daniel L. Weiss  
Henry K. Griesman

Malcolm D. Mogul  
George I. Gordon  
Stanley I. Rubenfeld  
Stanley I. Schachter  
Stanley I. Rossen  
Leonard Korobkin  
A. Herbert Schwartz  
Arnold Tolkin  
Daniel Teitelbaum  
Alan S. Brody  
Sheldon Isenberg  
Sheldon F. Hochberg  
Joseph Drew  
Harvey Lefkowitz  
Sanford J. Garrett  
Leopold N. Friedman  
Richard Halpern

■ BERNARD A. ROSENBERG

■ GAMMA

Henry M. Garsson  
Jack Berkowitz  
George B. Dorff  
Frank Katz  
Norman Friedland  
Milton Rein  
Joseph Foster  
Irving J. Kern  
Leo Young  
Jerome J. Jacobs  
M. Arthur Auslander  
Richard Norman  
Norman Fertig  
Robert S. Brenner  
Alvin Newman

Seymour J. Lisker  
Donald J. Behr  
Martin S. Bradie  
Melvin M. Horowitz  
Martin Lifton  
Martin Yudell  
Louis Brause  
Barry Lasner  
Robert K. Low  
Gerald F. Bloom  
Donald Moody  
Frederic I. Braunschweiger  
Steven Greenberg

■ DELTA

J.J. Buchbinder  
Abraham L. Stoller  
Harold H. Lowenstein

Jerry Cohen  
Arthur F. Concors  
Saul B. Appel  
William Berley  
Melvin Ludwig  
Jerome Berliner  
Howard H. Schultz  
Leonard Lehman  
Arnold S. Nelson  
Ernest Mendel  
Lewis B. Ward  
Howard M. Maisel  
Robert L. Morrison  
Ronald M. Lewis  
Dale B. Goodfriend  
Russell Geiger  
Robert M. Newman

Richard B. Glickman  
Samuel S. Yagur  
Ian Polow  
Stuart J. Sinder  
Lloyd R. Dropkin  
Norman I. Meyer  
Robert E. Blau  
Donald G. Cohen  
Fred Andrew Levine  
Mark Leonard Wurzel  
Howard B. Freedman  
Andrew J. Peck  
S. Robert Levine  
Richard M. Dinerstein  
Joseph Godles  
Bernarr Alan Newman  
Joseph S. Asher

Brian L. Jones  
**■ EPSILON**  
 Leon Schaefer  
 Richard J. Stull  
 Stanley C. Meyers  
 Louis B. Heller  
 Nathaniel W. Gold  
 Herman H. Wallberg  
 Hiram G. Shields  
 Sidney Portnof  
**■ ETA**  
 Jacob B. Ostroff  
**■ THETA**  
 William L. Berger  
 Morris L. Bornstein  
 Samuel E. Friedman  
 Lawrence J. Barsky  
 Robert Ruch  
 Harold Sydney  
 Philip Salny  
 Eli Gilbert  
 Irvin Schwartz  
 Norman K. Rutkin  
 Daniel Kosow  
 Nathaniel Lash  
 Bernard Abrams  
 George Michaels  
 Richard B. Barkin  
 Harold S. Cutter  
 Frank Weiner  
 Philip G. Barach  
 Jack Kosow  
 Gerald Eilberg  
 E. Richard Heldeman  
 William A. Kamins  
 Harold Katzman  
 Earle Leeder  
 Robert Meyers  
 Joel Klane  
 James S. Wilkes  
 Irving J. Waldman  
 Mandel Sherman  
 Bernard L. Grodzinsky  
 Martin H. Scher  
 Alan Striar  
 Warren Adelson  
 Richard Beckman  
 Michael A. Savitt  
 Richard T. Sloane  
 Howard L. Newell  
 Michael T. Chitoff  
 Allen B. Davis  
 Alan H. Kent  
 Donald Silpe  
**■ IOTA**  
 Samuel Feldman  
 Arthur J. Gerstl  
**■ KAPPA**  
 Lester H. Rome  
 Arnold C. Schwartz  
 Marvin E. Eisenstadt  
 Gilbert Miller  
 Jerome Kobre  
 Lawrence Birnbaum  
 Jerome S. Seiler  
 Ronald S. Nadel  
 Charles D. Lowenstein  
 James Rosenblum  
 Barton Perlbinder  
 Henry R. Mandel  
 Arthur Abelson  
 Melvin Hebel  
 Timothy M. Garvey  
**■ MU**  
 James Weinberg  
 Hyman Merlin  
 Bernard Tepper  
 Burton B. Bergman  
 Theodore C. Levitas  
 Maurice Spector  
 Sanford Shmerling  
 Jerome Hertz  
 Alfred D. Grant  
 Robert A. Rosenfeld  
 Harold L. Arnovitz  
 William Silver  
 Myron J. Mensh  
 Henry Hyatt  
 William L. Cohen  
 Russell Harris  
 Walter M. Weinberg

Harold D. Lavine  
 Robert P. Salomon  
 George M. Fox  
 Steven Berkman  
 Douglas Morrison  
 Alan S. Wolkin  
 Harold S. Vigodsky  
 Mitchell L. Le Vine  
 Steven M. Levine  
 Michael A. Wolf  
 Ross B. Pollack  
 Eric B. Gurwin  
 Gary C. Wainer  
 Ira Katz  
 Scott J. Horne  
 Louis I. White  
 Richard S. Lockenbach  
 J. Wayne Lindauer  
 Reid S. Friedman  
**■ NU**  
 Clarence Cohen  
 John B. Satlof  
 Eugene Allyn  
 Joe Gerson  
 Joseph Ginsberg  
 Philip B. Brinen  
 Ferman L. Jay  
 Murray M. Matesz  
 A. Albert Berger  
 Harry Spitzer  
 Jack J. Berlin  
 Mendel Romm  
 Harvey Rosen  
 Owen R. Bresler  
 Joe D. Stock  
 Harris Jacobs  
 Monroe Seibel  
 Jerry Jacobson  
 Sanford Orkin  
 William L. Waronker  
 Leon S. Cohen  
 Stanley I. Weiss  
 Marvin Podem  
 Herbert C. Stine  
 Stanley J. Hite  
 Louis Scharff  
 Richard M. Krock  
 Samuel Schwartz  
 Gilbert Levison  
 Fredric S. Benamy  
 Marshall E. Bloom  
 Melvin L. Hirsch  
 Leopold I. Cohen  
 Lawrence J. Cohen  
 Harold S. Solomon  
 Ronald B. Cohen  
 William M. Kurry  
 Alan J. Levy  
 Marshall J. Persky  
 Herbert M. Schulman  
 Paul N. Rodbell  
 Louis S. Schwartz  
 Larry Liebross  
 Richard I. Kaufman  
 Melvin L. Haysman  
 Abram J. Serotta  
 Larry Schulman  
 Hill A. Feinberg  
 Richard D. Adelmann  
 Gene A. Benator  
 Philip Solomons  
 David K. Fox  
 Larry R. Friedman  
 Allen M. Karmelin  
 David J. Mink  
 Bradley S. Cohen  
 Michael D. Cohen  
**■ XI**  
 Louis Small  
 Melvin A. Shikes  
 Robert N. Evans  
 Jeffrey C. Gelpey  
 Scott H. Oldach  
 Mark J. Neiman  
 Gerson E. Meyers  
 Michael E. Platt  
 Warren B. Belfer  
**■OMICRON**  
 Irving J. Goffman  
 Peter Shapiro  
 Jerry Panzer

**■ PI**  
 Israel Steingold  
**■ RHO**  
 Alfred Pasternak  
 Rudolph R. Glanckopf  
 D. Edward Frank  
 Ira M. Ball  
 Bernard B. Eichler  
 Irving M. Liebow  
 Gerald H. Becker  
 Martin Grodnick  
 Jack B. Halpert  
 Alexander Jarfet  
 Robert Carlin  
 Irwin Wolfe  
 Donald M. Rosenthal  
 Howard R. Elkes  
 Jay L. Kaplove  
 Michael Miron  
 Herbert D. Schimmel  
 Jack M. Slater  
 Mel Kutchen  
 William Cahn  
 Fred N. Kronfeld  
 Robert S. Maurer  
 Paul Nettler  
 John A. Bergman  
 Charles H. Laveson  
 Arthur N. Sheppard  
 J. Mitchell Ehrlich  
 Robert S. Goldman  
 Gary J. Riemer  
 Alan I. Stern  
 Martin E. Trossman  
 Richard D. Ehrlich  
 Daniel C. Kamins  
 Robert Kleinbart  
 Stephen Manes  
 Steven J. Batzer  
 Edward M. Goldstein  
 Samuel N. Werbin  
**■ SIGMA**  
 Philip F. Friedman  
 Joseph Lipshie  
 Monroe Friedman  
 Morris Birnbaum  
 Norton D. Handler  
 Martin A. Fleischer  
 Melvin Resnick  
 Irving J. Bronstein  
 Irving H. Merritt  
 Norton L. Speck  
 Daniel Blitzer  
 Howard Halpern  
 Jay Wiener  
 Irvin Birnbaum  
 Daniel Dorff  
 Alvin I. Schragis  
 Stanley P. Meltzer  
 Richard W. Isaacs  
 Chester Soling  
 Herman Weinberg  
 Jeffrey M. Atlas  
 Martin Matalon  
 Michael Klein  
 Thomas Aser  
 Michael J. Sawyer  
 David J. Baron  
 Robert A. Magnotta  
**■ UPSILON**  
 Gordan B. Stine  
**■ PHI**  
 Meyer Winer  
 David Silver  
 David Saul  
 Bernard Horowitz  
 Joseph N. Schwartz  
 Louis J. Taratoot  
 Edward Weinstein  
 Erich Sokolower  
 Martin Siegel  
 Stanley P. Steinberg  
 Leonard A. Lampert  
 Henry Hirsch  
 David L. Bergman  
**■ CHI**  
 Max Bridge  
 George Taft  
 Michael Frank  
 David A. Silberg

David A. Gell  
 Gunther M. Brinkman  
**■ PSI**  
 George Goldstein  
 Richard Levy  
 Nathan Horn  
 Earl Cohn  
 David Miller  
 Martin J. Rosene  
 Jerome Yavitz  
 Leonard J. Oguss  
 Earl Novick  
 Daniel H. Shteamer  
 Sidney Paddor  
 Herbert Moline  
 Seymour Britan  
 Melvin D. Frank  
 Edwin G. Michaels  
 Charles M. Holleb  
 Randy Epstein  
 Daniel A. Comm  
 Zangwill Munies  
 Earl A. Glick  
 Burton Levy  
 Jordan Heckman  
 Leon A. Brotzman  
 Sheldon Baren  
 Morton P. Weisman  
 Arnold Gilberg  
 Jordan S. Fishman  
 Judd Missner  
 Edwin Shapiro  
 Morton Goldsmith  
 Sheldon Lazar  
 Eugene Bernstein  
 Shelby Kanarish  
 Steven A. Lampert  
 Jeffrey A. Greenberg  
 Milford A. Ardell  
 J. Harlan Rosen  
 Harold A. Kessler  
 Mitchell Goldflies  
 Juan A. Asensio  
**■ OMEGA**  
 Jack C. Fred  
 E.J. Evans  
 Isadore E. Black  
 Maurice Miller  
 Joseph Shachtman  
 Chester S. Svirgals  
 Seymour Brown  
 Sylvan Meyer  
 Ernest Frankel  
 Harold Kaplan  
 Julian Weinkle  
 Malcolm M. Fleishman  
 Roy Swartzberg  
 Marvin N. Nathan  
 Robert M. Evans  
 Sander Siegel  
 Irwin Sawitz  
 Kenneth Myers  
 Charles A. Friedman  
 Eli N. Evans  
 Bruce Teck  
 Joseph S. Mendelsohn  
 David L. Cohen  
 Edward L. Weiss  
 Dennis C. Rinzler  
 Myron L. Slutsky  
 Albert Schiff  
 Stephen Rich  
 Jack A. Hanchrow  
 Paul L. Chused  
 Peter F. Spies  
 Elliott P. Murnick  
 Lawrence J. Roberts  
 Stephen J. Gassman  
 Steven A. Hockfield  
 Stewart W. Rosen  
 Marc C. Rash  
 James P. Sylvan  
 Herman Cone  
 Claire J. Wyatt  
 Leo M. Gordon  
**■ TAU ALPHA**  
 Aaron Kanner  
 Albert Dubbin  
 P. Sidney Neuwirth  
 Louis R. Gibbs

Irving B. Gibbs  
 Martin Segal  
 Robert Robbins  
 C. William Homa  
 Myer O. Sigal  
 Jerome H. Weinkle  
 Arthur M. Kahn  
 Burton Kahn  
 Maynard Abrams  
 Abe L. Kamenoff  
 George Wolly  
 Leonard Wolf  
 Julius E. Bearman  
 Al Schneider  
 Elmor Spector  
 Jacob M. Berkman  
 Richard Kirsch  
 Stanley Tate  
 Arthur B. Leibovitz  
 Leonard Sacks  
 Samuel Price  
 Ted Wittner  
 Jerome Schine  
 Joseph Nadler  
 Stanley Lippert  
 Jack F. Shorstein  
 Sanford Freed  
 David Hyman  
 Melvin Lesser  
 Herbert Buchwald  
 Jack A. Furman  
 Gary Gerson  
 Lee Eggnatz  
 Joseph Block  
 Bernard Berkman  
 Harry Maziar  
 Ted S. Finkel  
 Charles L. Cherry  
 Byron Selber  
 Neil Chonin  
 Norman H. Lipoff  
 Edward Tisnowar  
 Samuel R. Shorstein  
 Stephen Puldy  
 Eugene B. Rosenbaum  
 Al Morrison  
 James V. McClure  
 Robert Blitz  
 Alan F. Salomon  
 Michael Nejina  
 Robert Collins  
 Allan M. Lerner  
 Elliott Buchman  
 Saul Katz  
 Marc Weinstein  
 Joseph Farcus  
 Edward P. Guttenmacher  
 Bernard M. Levine  
 Eric R. Jonas  
 Michael J. Levinson  
 Gerald Rosenthal  
 Gary Cohen  
 Laurence A. Lancit  
 Louis Friedland  
 Anthony K. Center  
 Michael P. Gable  
 Jack Bettman  
 Stephen M. Sokal  
 Daniel Budasoff  
 Lawrence R. Gordon  
 Albert L. Kahn  
 Alan S. Payne  
 Barry A. Eichenbaum  
 Neil Gordon  
 Barry Karpay  
 Robert K. Berger  
 Frank H. Katz  
 Mark E. Bennett  
 Barry Dreayer  
 David B. Roberts  
 David Cohen  
 Clifford B. Ain  
 Ira D. Karmelin  
 Sidney S. Suintag  
 Douglas F. Hoffman  
 Herbert E. Kaufman  
 Irvin Robbins  
 Sidney Stillman  
**■ TAU BETA**  
 Julian Venezky  
 Ernest Michaelson

Mark Deskin  
 Stanley Schwartz  
 Leo J. Sklar  
 Morris Forman  
 Milton M. Mulitz  
 Ben Alperstein  
 Samuel J. Lefrak  
 Daniel Harwood  
 Norman Tilles  
 Hotsy Alperstein  
 Samuel J. Frank  
 Charles Bresler  
 Allen J. Fried  
 William Kahn  
 Daniel M. Fink  
 Emil W. Hymowitz  
 Mark D. Coplin  
 Samuel L. Schwartzman  
 Micheal Holofcener  
 Howard L. Eisenstein  
 Samuel R. Parks  
 Lowell R. Glazer  
 Sheldon Schlossberg  
 Alvin S. Baraff  
 Philip D. Puelo  
 Benjamin Guerwitz  
 Edward J. Koenigsberg  
 Paul Rosenberg  
 John I. Smeyne  
 Mitchell Slavitt  
 Kenneth Topaz  
 Frederick R. Satkin  
 Joseph S. Forster  
 David Sagal  
 Jay Brecker  
 Donald L. Kahn  
 Peter A. Sklar  
 M.K. Jason  
 Howard L. Perlow  
 Paul S. Saltzman  
 Leslie J. Ulanow  
 Andrew P. Klein  
 Jeffrey N. Perlow  
 Steve Silberfarb  
 Ariel J. Segal  
 Larry P. Moskowitz  
**■ TAU GAMMA**  
 Milton Narwitz  
 William Manns  
 Samuel Dobkin  
 Raymond E. Finkel  
 Jerry Harwin  
 Nathan Kates  
 Arthur M. Gameral  
 Victor Schulman  
 Harry M. Goldstein  
 Elliott M. Steinman  
 Jack Carlow  
 Judge Joseph Wapner  
 Saul Tanzman  
 Frederick M. Nicholas  
 Morris Glesby  
 Marvin R. Grant  
 Robert Gordon  
 Jere S. Kopald  
 Robert Bracker  
 Milton Herman  
 Harlan Capin  
 Richard Capin  
 Berry D. Locke  
 Ives B. Nathan  
 Ronald Bloom  
 Stanley M. Miller  
 Morton Barke  
 Morris Mesler  
 Robert F. Goodman  
 Jerold Sherman  
 Richard C. Barrett  
 Benjamin Rosin  
 N. Dann Moss  
 Bruce H. Spector  
 Brian Wald  
 Howard N. Rosen  
 Sidney G. Marantz  
 Robert S. Chernock  
 James A. Meyers  
 Jeffery L. Fanto  
**■ TAU DELTA**  
 Robert Shapiro  
 Louis L. Manes  
 Harold H. Romain

# TAU EPSILON PHI

- S. Earl Gordon  
Yale A. Bloom  
Joseph Ruderman  
Harry A. Finkelman  
Mark Ruben  
Sidney M. Roth  
Leo K. Mintz  
Gerald B. Elkind  
Aaron N. Mintz  
Sanders D. Heller  
Murray Landau  
Al Spivak  
John R. Sussman  
Edwin Z. Singer  
Merle Greenwald  
Martin H. Gold  
Alan I. Slonim  
David Braver  
Marvin G. Manes  
M. Gross  
Jordan R. Lefko  
Phillip Rose  
Victor M. Kolodny  
Stuart Kepets  
Steve Krass  
Martin A. Levin  
Marvin L. Schrage  
Allen S. Spike  
Roger M. Singer  
Jack R. Abo  
J. Samuel Tenenbaum  
Michael J. Duber  
Jeffrey N. Nachman
- TAU ZETA**  
Samuel Levy  
Theodore Sobel  
Preston Erlick  
Philip Russakoff  
Israel Orr  
Richard A. Geisberg  
Sumner H. Shafmaster  
Milton Erlick  
Leonard Minsky  
Howard Berg  
Ronald Herzberg  
Mark H. Cohen  
Edmund P. Weiner  
Douglas S. MacLean  
Laurence Bader  
Gregory T. Wright  
Bruce L. Bigman  
Vinal W. Applebee  
Philip W. Herzberg
- TAU ETA**  
Louis E. Gelt  
Lee J. Brenner  
Eugene Kurland  
Harvey Sawyer  
E. James Judd  
Robert M. Frank  
Charles S. Rotenberg  
Mark S. Levy  
Ira J. Seskin
- TAU THETA**  
Bernard Margolius  
Mark Weinstein  
Hugh M. Odza  
Arthur Schachner  
Jerome Mars  
A. Joseph Levy  
Ronald Spitalney  
Herbert B. Silver  
Martin Zipern  
Stuart Dickman
- TAU IOTA**  
Herbert Kirshner  
Don Schelew  
David Ghetler  
Ralph Medjuck  
William P. Warren  
Isaac Boniuk  
Leonard I. Levine  
Carl S. Raphael  
Allen M. Ruben  
Ivan M. Levine  
Joseph S. Roza
- TAU KAPPA**  
Bernard Yesner
- TAU LAMBDA**  
Stephen Brull  
Morris Goldman
- Jack H. Silverman  
E. Robert Obus  
Seymour Weisberg  
Martin Garelick  
Walter Zobel  
Philip H. Garver  
Alvin A. Birne  
Julius Wishnia  
Kenneth S. Recu  
Lloyd Mishlove  
Robert Y. Kamin  
Sheldon D. Katz  
Jacob I. Krushen  
Zigmund Quastler  
Michael Romanoff  
Leslie Strull  
Barney H. Miller  
Robert A. Zaban  
Arthur Dubin  
Alan Lipton  
Stephen Fienberg  
Martin J. Michaelson  
Lester B. Slate  
Stephen Strom  
Douglas R. McGill  
Gerald N. Fieser
- TAU MU**  
A. Bart Lewis  
Irving J. Block  
Marvin Edelman  
Stanley Rosoff  
Leonard Bloom  
William Israel  
Harris Chaiklin  
Hart E. Bernstein  
Myron R. Bernstein  
Sidney H. Savelle  
Alvin J. Comen  
Peter S. Drotch  
Stewart E. Bograd  
Andrew L. Nachby  
Michael Scheinblum
- TAU NU**  
Nathaniel Frayne
- TAU XI**  
Bruce E. Trauner  
Stan Blackman  
Harold Leviton  
Herbert Howard  
Irving Lebow  
Benjamin Koven  
Melvin Morris  
Marshall Feuer  
Jack R. Pathman  
Lawrence Newman  
Jack Birnholz  
Ainslee R. Ferdie  
Herbert L. Gopman  
Arnold S. Friedman  
Barton S. Goldberg  
Larrie S. Blasberg  
Seymour Lauretz  
Floyd H. Jayson  
Harvey Goldenberg  
Richard A. Spiers  
Melvin L. Opper  
Bennett E. Margolis  
Stephen Meadow  
Clement J. Wohlreich  
Alden Englander  
Gary Lipschutz  
Seth H. Bramson  
Terry M. Goldberg  
Allen J. Bernstein  
Bruce J. Scheinberg  
Samuel S. Roth
- TAU PI**  
Samuel Bresnick  
M. David Freedman  
Bert Libon  
Robert E. Fein  
Merwin H. Rubin  
Joseph Casden  
Charles C. Goldfarb  
Eugene Isenberg  
Martin Isenberg  
Philip Poverman  
Jonas H. Chavas  
James H. Slovlin
- TAU RHO**  
Robert L. Loewenthal
- Donald Jacobson  
William Levine  
John S. Woodward  
Ronald S. Silvers  
Ralph L. Feola  
Donald H. Cubberley
- TAU UPSILON**  
Jeremy Berg  
Norman Gross  
Barry V. Weinstock  
Eugene I. Majerowicz  
Paul J. Steier  
Phill A. Weissman  
Roger Fein
- TAU CHI**  
Alvin Borowick  
Erwin A. Sherman  
Edward Garber
- TAU PSI**  
Raymond Singer  
Martin S. Wolsky  
Israel Schanerman  
Millard Spialter  
John J. Dell  
Fred J. Reiss  
Robert Berlin  
William Klein  
Edwin Merchant  
Ronald M. Kaplan  
Stuart Cooper  
Martin Ustin  
James J. Melnick  
Robert P. Vogel  
Saul H. Bernstein  
Robert L. Grand  
David A. Perlmutter  
Joseph C. Hari  
James J. Flaherty  
Peter J. Kenny  
Joseph F. Spadafino
- RHO DELTA RHO**  
Melvin L. Polacek  
Melvin Hanberg  
Benjamin B. Helfner  
Lawrence Perlstein  
Richard L. Molay  
Sheldon H. Biales  
William A. Press  
Donald Elisburg  
Ronald H. Nelson  
Lowell M. Roseman  
Jeffrey R. Light  
Larry Elewitz  
Henry Wasserstrom  
Marvin Beller  
Jack Lapidos  
Dennis S. Kluk  
Allen J. Oposnow  
Jay D. Comens  
Gary L. Regensburg  
Stanley R. Bandur  
William B. Jacobs  
Robert H. Marino  
Marc T. Perkowitz  
Richard H. Strode  
John P. Cieslak  
Norman Lettvin  
George Coleman  
Louis S. Jacobs  
Harold H. Slavitt  
Bernard B. Riman
- TAU OMEGA**  
Joseph A. Young  
Eugene M. Sherman  
Donald Stuart  
George Steinberg  
Donald A. Costantino  
Glen McCloud  
H. Charles Tapalian  
Joseph F. Penza  
Robert J. Petisi  
James R. Mahoney
- EPSILON GAMMA**  
Allen Turtel  
Richard Halpern  
Bruce Davis  
Robert Smiley  
David White  
David Bregman  
Richard M. Frome  
David Friedlander
- Bruce H. Prussack
- EPSILON DELTA**  
Harvey L. Goldstock  
Richard Burg
- ZETA LAMBDA PHI**
- Leonard S. Wissow  
David Levin  
Leonard Edelman  
Samuel Ledger  
Milton Prusan  
Robert Seigle  
Ben Brager  
E. Kelberg  
Paul Bernstein  
Nathaniel Jackendorff
- DELTA UPSILON**  
Walter D. Padow  
Neil Caplan  
Carl Zielonka  
Karl L. Halperin  
Barry J. Weinstock  
Alan H. Frank  
Eric Vlahov  
William G. Aten  
David T. Parker  
W. Henry Kofol
- EPSILON**
- DEUTERON**  
Jack Schlosberg  
Richard Fink  
Ronald H. Wohl  
Richard S. Darlow
- EPSILON ETA**  
Richard Roberts  
Morton Resnicoff  
Alvin Lassoff  
David R. Shafir  
David C. Steinberg  
William Yantis  
Paul R. Greenwald  
Harvey L. Stein  
Stanley H. Abramson  
Charles Rose  
Mark J. Fox  
Alex N. Gruber  
Sanford J. Piltch  
Douglass S. Abramson  
Chandler D. Driggs  
Thomas M. Figlio  
Michael F. D'Onofrio  
Alan J. Plotkin  
Philip Lempert  
Stephen E. Cohn  
Louis J. Picciano  
Robert S. Elias  
Raymond S. Escardille  
Howard L. Edelman  
Richard B. Hamilton  
Jeffrey R. Gans  
Murray N. Greenberg  
Stephen A. Brown  
Peter J. Pritz
- EPSILON RHO**  
Frederic H. Milman  
Jeffrey Gold  
Benjamin P. Geller  
Barry Singer  
Robert J. Levine  
Arnold B. Calmann  
Lawrence Goodstein  
Charles W. Zimmerman  
David N. Hoffer
- EPSILON THETA**  
David H. Cohen  
Joel D. Rubin  
Warren A. Kaplan  
Paul S. Roberts
- PHI LAMBDA**  
Seymour L. Steinsaltz  
Stanley Klein  
Jonathan J. Jaffess  
Arnold Jentleson  
Barry S. Schiller
- EPSILON LAMBDA**  
Arthur A. Gertzman  
Stanley R. Address  
Martin Gottlieb  
Ian S. Friedlander  
Lawrence B. Alemany  
Michael A. Berlinger  
Rick Goldenberg  
Sandor V. Halasz
- EPSILON ZETA**  
Philip A. Wiseman
- EPSILON MU**  
Jeff Silverbush  
Alfred C. Versacci  
David M. Bicofsky  
Kenneth P. Maykow  
Mark L. Kay  
Nicholas Trotta  
Alan Kovar  
Thomas J. Borgioli  
Walter S. Goetz
- EPSILON NU**  
Herbert Goldberg  
Michael Rosenberg  
Paul S. Kivett  
C.B. Goes  
Harold T. Craft  
Stephen H. Kramer  
Joseph E. Beach  
Cameron M. Rylance
- PHI GAMMA**  
Robert Shapiro  
Larry Gursten  
Dennis R. Green  
Steven H. Glickman  
John J. Landon
- ALPHA OMEGA**  
Lawrence Keyv  
Lawrence A. Rosner  
Paul Goldman
- EPSILON KAPPA**  
Ronald D. Fein  
David Dombek  
Malcolm G. Robinson  
Steven Wolf  
Lester F. Lit  
Gerald A. Feldman  
Joel A. Picker  
Richard Schlanger  
Ira L. Avrunin  
Edward J. Carnot  
Jeffrey R. Hacker  
Charles L. Duke  
Douglas M. Wieder  
Myron Tanenbaum  
Martin Weinstein  
Daniel H. Ravner  
Theodore G. Bradpiece  
Stanley R. Nelson
- PHI ETA**  
Gilbert Fritz  
Arthur P. Samuelson  
Charles F. Reid  
Jonathan L. Alpert  
Robert L. Kirby  
Dennis J. Clausen  
Paul L. Cox  
Harold W. Geisel  
Michael L. McGrael  
Joseph A. Thomasino  
David J. Boehlke  
John G. Ullman  
John C. Rehner  
Charles L. Harp  
Jonathan B. Pinck  
Michael L. Neider
- ALPHA BETA**  
Hardy C. Katz  
Mark Levine  
Les A. Liman  
Alexander H. Porter  
Ronald Heineman  
Stanley I. Rosen
- SIGMA PHI**  
Robert Locke  
Alan R. Breiter  
Bill Rubinsohn  
Ronald D. Katz  
William C. Burton
- EPSILON PI**  
Kenneth Rosen  
James P. Cohen  
Warren C. Feldman  
Michael Weinschel
- EPSILON XI**  
Arnold S. Loeb  
Robert S. Schiffman  
Frederick L. Bouchard  
Howard M. Katz  
Walter G. Stacey  
Steven R. Ellsweig

- Robert A. Simpson
- **EPSILON IOTA**  
Eugene Margolis  
Stanley Jacobs
- Harold E. Seligson  
Robert Mandell  
David E. Goldberg  
Robert F. Geller  
Jesse I. Treu  
G. Michael Fallet
- **KAPPA ZETA PHI**  
Peter Soltz  
J. Harold Paul  
Paul Cowan  
Richard L. Levy  
Patrick L. Amarante  
Robert V. Goldman  
Fred Tobman
- **EPSILON TAU**  
Joel N. Blustein  
Robert L. Lesak  
David Hoffman  
Norman Jacobs  
Jeffrey R. Weiner  
Ira A. Mallin  
Mark Schirloff  
John F. Illis  
Alan R. Potash  
Richard H. Tanenbaum  
Barry W. Frost  
David A. Schustack  
Steven J. Goldman  
Scott D. Pallay  
Stephen D. Levin
- John Wagner
- **EPSILON SIGMA**  
Edward A. Rachins
- **EPSILON OMICRON**  
Melvyn A. Levrant  
Warren L. Shrensker
- **DELTA TAU**  
Elliot J. Jackson  
Chester E. Flam  
Jerry Lewis
- **EPSILON PHI**  
Donald R. Herman  
Leslie H. Berger  
Jesse B. Harris  
Richard C. Letsch  
Ian A. Abarbanel  
Michael P. Freedman  
Melvin Pirchesky  
Michael H. Kean  
Jonathan P. Kross  
Howard R. Sanders  
Edward J. Godorov  
Richard A. Bloom  
Charles G. Cassel  
Robert F. Coyle  
Paul D. Sheeler  
Donald A. Bamford
- **ALPHA KAPPA**  
Jack Friedman  
David Braun  
Raymond E. Salomone  
Alexander M. Kushner
- **EPSILON PSI**  
Maurice Mauner  
Charles M. Zipser
- **GAMMA SIGMA**  
Larry L. Shapiro  
S.J. Lindheim  
Stanley Abrams
- **EPSILON OMEGA**  
Richard W. Sbaschnig  
David Sobin  
Joseph Wenger  
Cary Presser  
Allan I. Davis  
Michael T. Henderson  
Steven Miller  
Joel S. Kazin  
Gary R. Kazin  
Robert D. Grasso  
Curtis N. Browne  
Mark E. Kaminsky  
Robert E. Goldberg  
Judah B. Klein  
Carl Engle
- **NU KAPPA OMEGA**  
Thomas K. Grzesiek  
Gary F. Hogan  
Curtis T. Brown  
Robert D. Biestek  
Michael B. Torrey  
James W. Patterson
- **KAPPA DELTA**  
Victor J. Calvo  
Richard A. Byer
- Joseph P. Andreotto  
Ralph J. Atti  
Irving Elias  
Ronald G. Semer
- **SIGMA EPSILON**  
Thomas E. Adams  
Alan I. Safra  
Michael H. Persons
- **PHI BETA**  
Timothy P. Drumm  
Michael J. Tuno  
William F. Moriarty  
Mark S. Levine  
Guy R. Fasson  
Jerry A. Graeber  
Gerald D. Paten  
Alan H. Goldsmith  
William M. Lauderdale  
E. Donald Thomas  
Alan M. Kameron  
Mark J. Burger
- **TAU ALPHA KAPPA**  
Gregory M. O'Brien  
Kenneth M. Leff  
Edward A. Geller  
Edward L. Skabowski  
Kenneth D. Scott  
Paul R. Levy  
Arnold F. Manche  
David Caplan  
Jack I. Laveson  
Jonathan W. Frazee  
Brian J. Conant  
Enrique A. Ross
- **SIGMA LAMBDA**  
Henry M. Dubrow  
Paul R. Portnof  
Marvin W. Lax  
E. Gardner Jacobs
- **PHI MU**  
Frederick L. Anthony  
John W. Greene  
Mark Lowy  
Michael S. Cantor  
Thomas Brown  
Robert J. Gomez  
Peter J. Gabbe  
Christopher Courage  
Eugene C. Wasynczuk  
Paul S. Sheldick  
Louis R. Maino
- **LAMBDA PHI EPSILON**  
John R. Stearns  
Stephen E. Biffar  
Craig E. Cobb  
Russell D. Patricia  
Theodore S. Lopresti  
Carl F. Becker  
Robert S. Thorburn  
Wayne L. Petterson  
Thomas J. Murphy
- **PHI NU**  
Andrew McMillan
- **PHI UPSILON**  
Tobias Massa
- **PHI DELTA UPSILON**  
Dennis J. Larusso  
Eugene J. Koblika  
Robert W. Ritchie  
Stephen P. Hanchuruck
- **TAU KAPPA BETA**  
Richard Grich  
Carl J. Scarpelli
- **PHI OMICRON**  
Terry Fuller  
Salvatore J. Carbino  
Alan J. Lerman  
Michael J. Kelly
- **PHI PI**  
David J. Harper  
Marc S. Intriligator
- **OMEGA UPSILON CHI**  
Mark A. Hartman  
Bruce E. Dewitte  
Michael C. Biggins
- **TAU ETA EPSILON PHI**  
Michael R. Forget
- **TAU SIGMA UPSILON**  
Vladimir A. Barrera

## THE TEP FOUNDATION INC. Board of Trustees (1987-1989)

Alfred C. Versacci, *President*  
 Albert J. Schiff, *Vice-President*  
 Mark S. Kay, *Treasurer*  
 Eric Jonas, *Secretary*

### BOARD OF TRUSTEES

Donald Anspauch	Charles Cumello	Dr. Arthur Joblin	Stanley I. Schachter
Jeffrey Atlas	Gerald A. Denmark	Samuel J. LeFrak	Jeff Silverbush
Barry Berish	Leo M. Gordon	Harold Leviton	John I. Smeyne
Richard C. Barrett, Jr.	Neil Gordon	Larry Liebross	Gerald Whitman
Dr. Martin H. Belsky	Dr. Sheldon Grebstein	Sylvan Meyer	
Michael Berlinger	Adrian Harris	Dr. Gregory O'Brien	
David Caplan	Sidney Haskins	Howard Perlow	

### TRUSTEES

**EMERITUS:**  
 E.J. Evans  
 S. Earl Gordon  
 Sanders D. Heller  
 Harris Jacobs  
 Seymour Weisbreg  
 Leonard Wolf

## 1989 TEP FOUNDATION INC.

### Endowment Fund Campaign

The TEP Foundation Inc.  
 3088 Mercer Univ. Dr., Suite 200  
 Atlanta, GA 30341

Please find enclosed my donation made payable to The TEP Foundation Inc.

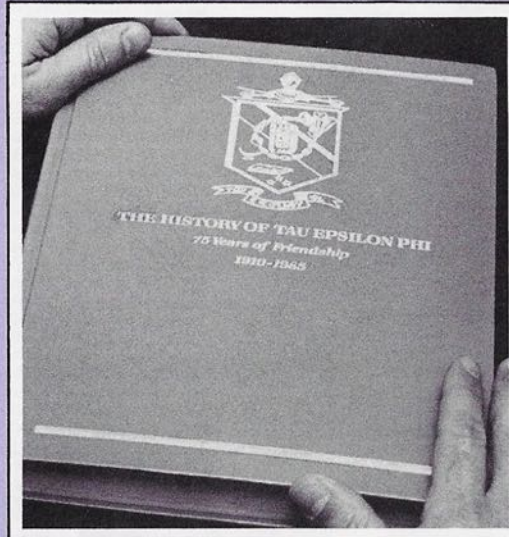
Brother \_\_\_\_\_  
 Address \_\_\_\_\_  
 City, State, Zip \_\_\_\_\_  
 Chapter \_\_\_\_\_ Grad. Yr. \_\_\_\_\_

- Presidents Club (\$1,000 or more)
- Hearts & Links Society (\$100 or more)
- Helmet & Swords Assoc. (\$50 or more)
- The Plume Club (\$10 or more)
- Other

## “75 Years of Friendship” The History of Tau Epsilon Phi

*“... It will occupy a prominent place in my home and heart ...”*  
Sidney Haskins, Nu

*“... It is a veritable masterpiece of research and compilation ...”*  
Edwin J. Wacksel  
Sigma



Individual copies of the HISTORY are still available to TEP alumni and undergraduates. The price of this invaluable memento of TEP's magnificent story continues to be \$31.95.

- Large oversized format
- Hardbound Lavender cover
- 500 Illustrations
- A chronological history of the National Fraternity.
- Separate history of every chapter
- Over 5,000 TEPs and their exploits listed
- Every chapter's founders listed
- Listing of all honorees and laureates
- All scholarship winners
- Incredible reading ... fascinating facts
- Extraordinary in scope ... over 100 chapters are historically traced from their beginnings
- A must for every TEP's library

### THE TAU EPSILON PHI FRATERNITY

TO ALL GRADUATING BROTHERS,

Has the spring semester got you down? No set job or place to live — not enough funds to get away for a vacation? Well, don't despair!! If you are graduating between now and August without the perfect job or marital plans, if you like to travel, visit other chapters, and are willing to commit one or two years, your worries might soon be over.

Due to the recent expansion of the fraternity, Tau Epsilon Phi will be hiring one, two, maybe even three new professional staff members. Right after graduation will be the only years when any of us could afford to serve our fraternity on a full-time basis. Therefore, for you this might be the ideal situation. The positions open are for Chapter Service Field Consultant. Hiring will be this summer for one to two year terms.

As a TEP Field Consultant you will:

1. Travel, all expenses paid, to chapters all over the country; meet and work with undergraduates, alumni and university officials.
2. Spend time in Atlanta working with the office staff learning all about the operations of the international fraternity.

3. Help to strengthen chapters and start a brand new colony/interest group.
4. Receive National recognition, through convention, conclaves, grand council meeting, and articles in the PLUME.
5. Learn about leadership development and many other facets of the working world.

In addition to the salary and paid travel, the benefits include:

1. Full health and liability insurance.
  2. Free attendance at convention during term.
  3. Paid vacation.
  4. Discounted life membership.
  5. Jewelry and other TEP paraphernalia
- \*Alumni placement assistance (after your term)

Many successful alumni have served as Field Consultants and gained the invaluable experience we offer. If this sounds like a good possibility for you, contact the National Headquarters for information. After college, TEP is a great place to start.

Fraternally,  
Jonathan Seidel  
Executive Director



**TAU EPSILON PHI  
FRATERNITY  
announces the  
reactivation of**

ALPHA KAPPA COLONY  
Adelphi University

■  
EPSILON XI COLONY  
Clark University

■  
TAU MU COLONY  
University of Connecticut

■  
PHI MU COLONY  
University of Hartford

■  
KAPPA ZETA PHI COLONY  
Northeastern University

■  
TAU DELTA COLONY  
Ohio State University

■  
EPSILON IOTA COLONY  
Rensselaer Polytechnic Institute

■  
TAU UPSILON COLONY  
UCLA



**Seidel Named  
TEP National  
Executive Director**

The Grand Council is pleased to announce the appointment of Jonathan M. Seidel, Tau Alpha #1897 (University of Florida), as Executive Director effective February 4, 1989.

Jonathan brings to the Fraternity a wealth of experience in Greek affairs, communications and public relations. He began his service to Tau Epsilon Phi as an undergraduate member of the Grand Council while a student at the University of Florida. Upon graduation, Jonathan was appointed Director of Chapter Services for the Fraternity, a position he held until returning to Florida to pursue graduate studies in law and communications.

After completion of his studies at the University of Florida, Jonathan spent time in our Nation's Capitol

as a Legislative Affairs Consultant before returning to his native Atlanta to assume the position of Assistant Executive Director of the Fraternity. In this position, he implemented TEP's tremendous expansion program and revised the format and publication of the Fraternity's magazine, the PLUME.

As a Public Relations Specialist, Jonathan worked in corporate communications for several Atlanta-based organizations, including Turner Broadcasting and Citizens and Southern National Bank. He has also been involved with numerous charitable and civic organizations in the Atlanta area.

Jonathan has set many aggressive goals for Tau Epsilon Phi which he will continue to address in his new position as Executive Director.

*TEP Travels cont.*

small or perhaps because of what all of you teach to the newest members, I have seen a remarkably high level of Social Responsibility throughout all the chapters and colonies. This is a tremendous thing to see while on the road — it makes my work easier and my visits more constructive. The secret is that each brother assumes responsibility for himself and all the rest of his brothers. You guys are doing just that. As we grow, this has become the key to having an International Fraternity stronger than ever.

Today we have chapters and col-

onies working together like never before. The level of enthusiasm of chapter leadership to help the International Headquarters with everything from expansions to better communication has been great. The turnout at the Conclaves and the spirit building behind the Convention has remotivated many undergraduates and alumni who have been out of the picture for some time. We all think this kind of spirit is priceless, and everyone must be committed to keeping it going. Finally, from the TEP staff, a big "thanks" to all the

brothers who have spent their free time working with the office to make the Fraternity run much smoother.

We are a Fraternity full of "bridge-builders" with many Common Ideals that bring us together. We work toward common goals with nothing but TEP SPIRIT as an incentive. We are on a roll now. I have seen the change and I believe with a combined effort we will continue to get better. The view from the road is an exciting one, and although not all of you can share the "view," believe me, the TEP SPIRIT is very much ALIVE.

## CHAPTER HIGHLIGHTS

### TAU EPSILON PHI

*Editor's Note: The following reports were submitted for inclusion in The Fall/Winter Edition of the PLUME . . .*

#### ■ TAU BETA, University of Maryland

The brothers of Tau Beta Chapter are still riding high after receiving the National Chapter of the Year Award for 1988. The entire chapter has been very helpful in welcoming numerous TEPs into their home on several recent visits by other undergraduate chapters. They were also instrumental in the education and initiation of one of the newest chapters at the University of Virginia (Tau Nu Chapter). A special congratulations goes out to Brother Steve Richman who was one of 62 students, out of a field of 30,000, to be selected for Who's Who Among College and University Students for 1988. Steve's achievements are reflective of the chapter's successful programs. With rush approaching Spring semester, the Tau Betas are anxious to prove to the entire University of Maryland why they are one of TEP's top chapters.

#### ■ TAU OMEGA, Univ. of Rhode Island

Recently, the Tau Omega Holding Corporation announced a comprehensive plan to renovate the chapter house located at 22 Campus Avenue Kingston, Rhode Island. It must be stated from the beginning that our house is truly a home and the more than 580 Tau Omega brothers look upon the business of renovating not as a task, but as an act of love. The installation of new floor coverings in every hallway, the installation of new kitchen counter tops, and a badly needed overhaul of the electrical and plumbing systems are slated for sometime this fall. These efforts are a joint endeavor entered into both by the undergraduates and the alumni and serve as further proof to the national fraternity the deep sense of commitment we feel toward any entity connected with Tau Epsilon Phi. We look upon our house as an entity which has served as a home to the nearly six hundred men who have entered its portals during its forty-one year history.

This academic year, the house is off to one of the best starts in its history. The house is full to capacity and is tremendously motivated to make this our greatest year. The response from rush has been outstanding, and a class of twenty to twenty-five candidates is a definite possibility.

Legendary brother, Edward "F-5" Moran, has returned to his post as house chef for another year. Ed is more to this

house than merely its chef; he is our focal point. He is an endless source of wisdom, advice and experience. His record of service to this chapter is long and distinguished. His unselfish service should serve as an example to all brothers in Tau Epsilon Phi from coast to coast. We are truly fortunate to have him.

Brothers at Tau Omega chapter wish the word to go forth that we stand ready willing and able to help the new and growing colonies at the University of Hartford, Boston University, and Northeastern University to realize their ultimate goal of brotherhood in this fraternity. We make this pledge because entrance into the portals of Tau Epsilon Phi is an experience we treasure. Helping others to realize this goal is, to us, not a duty, but a pleasure and an honor.

#### ■ MU, Emory University

This year at Mu Chapter has already been one of our most eventful and successful. Our softball team overcame all obstacles to defeat its challengers and win the all campus championships. The victory only added to past triumphs placing TEP first in the All-Row intramurals competition at the end of fall semester.

Mu chapter was also honored with the Tau Epsilon Phi National Kleinberger Award for having the highest cumulative grade point average among TEP chapters nationally. With rush upon the chapter, the brotherhood anticipates another strong pledge class for the 1988-89 school year.

Looking ahead toward fall 1989, the Mu Chapter will be celebrating its 70th Anniversary at Emory University. The brothers are hard at work planning an Anniversary Weekend to honor all past and present Mu TEPs. Alumni are requested to keep their eye out for the chapter's upcoming newsletter for more information on the 70th Anniversary Weekend Celebration.

#### ■ PHI BETA CHAPTER, University of South Florida

Phi Beta Chapter just complete a successful rush. Our chapter was in operation throughout the summer and everyone is looking forward to an excellent semester.

We would like to extend congratulations and best wishes to our graduates: Mitch Weinstein; David Levine (currently

attending Cumberland Law School in Alabama); Michael Haber and Michael Horowitz (attending Law School in Miami).

Phi Beta is once again getting its alumni actively involved with the help of David Anton, TA 1596. David is currently living in the Tampa area and taking an active role in Phi Beta chapter. Welcome aboard, David!

Phi Beta was honored to receive the Lefrak Award for Campus Achievement. We have been working hard and continue to strive for the top. Phi Beta is definitely on the upswing as we are in line for a campus house!

We would like to thank the brothers of Tau Zeta Chapter, University of Maine, for extending warm hospitality while our Chancellor, Kendal Gay, was at the school attending a leadership conference.

The brothers of Phi Beta are planning a trip on the SeaEscape. It will be a one-day cruise in which brothers and friends will be able to spend more time with each other.

Phi Beta was happy to be teamed up with the ladies of Alpha Delta Pi, the brothers of Kappa Alpha Psi and Alpha Tau Omega for Greek Week in the beginning of October. We were all very excited for this series of events.

#### ■ RHO CHAPTER, University of Pennsylvania

Here we are in the midst of another banner year at the University of Pennsylvania, Rho Chapter of Tau Epsilon Phi. As we all returned from our glorious summers, everyone looked forward to returning to the house to see old faces, old friends. As the eleventh Rho Platoon moved into the house, excitement in the fraternity is at an all-time high. Under the leadership of President Mike Brand, we TEPs are thoroughly enjoying the benefits and responsibilities of brotherhood.

We kicked off the social year with our first annual "Speak Easy" party, organized by Social Chairman Joel Nied. This successful gathering led to our also popular Monster Bash, Prism Party and eventually our Semi-formal. Parent's Weekend at Penn was also a big success as we welcomed parents of brothers to a reception at the house.

Homecoming at Penn this year gave us our best turnout yet. Alumni from the forties, fifties, sixties, seventies and eighties all came to our reception and party

thrown in their honor. At our cocktail party for the alumni, we initiated Alzie Jackson, longtime houseman for Rho TEP, into the brotherhood as an honorary member. The highlight of the evening came when brothers young and old joined in a rousing chorus of "Tau, Boys."

On the serious side, we at Rho TEP have continued our fundraisers for the American Cancer Society, raising considerable amounts of money for donations. We also held one of our bi-annual blood drives again this semester, as always, and have become involved in a new philanthropic organization, PHRAT — an organization centered around providing meals for the homeless of Philadelphia.

After a successful rush, led by Rush Chairman Mike Fox, our Pledge Warden Don Bradford is now using his ROTC training to enthuse and unify our twelfth pledge class. We wish luck to Don and all of the thirty new candidates for brotherhood.

As we end our fall semester of this academic year, all look forward to the spring and more days of fraternity and brotherhood here at Rho TEP. As always, "TEPs ARE TOPS!"

#### ■ RHO DELTA RHO CHAPTER, Illinois Institute of Technology

The past Fall Semester, Summer, and beginning of the new term have brought changes for the better, to our chapter here at IIT in Chicago.

The Fall of 1988 boasted Chapter accomplishments including a first-place award for the IFC Pageant, overtaking Delta Tau Delta to win first-place in IFC Bowling, and recognition as the single largest source of donors for an annual Blood Drive. At Pageant, the brothers enacted a hilarious, comedy skit, "Life as a Pledge," and holding true to tradition, walked away carrying the first-place trophy. With the help of our Alumni Advisor, Lowell Roseman, our chapter took the first important steps in resolving past-debt problems with the school, and began a re-payment plan. We are very grateful for the overwhelming support we received from Alumni by mail and phone in connection with this issue. It is our desire to better our Alumni Relations and re-gain the good communications and activities we have had in the past. Good rapport can only be accomplished with work from both us and our Alums.

This past Summer hosted a couple of very memorable events including a long-awaited "Alumni Smoker", and a Summer party. The Alumni Smoker, the first in many years, brought close to 30 Alums

from all age groups and walks of life. The evening proved to be a time sharing of past memories and present experiences. The experience overwhelmed all of us active undergraduates. The Summer party brought brothers and prospectives together from break, for a good-time to help cool-off and relax. The first issue of "The TEP Tattler," our alumni newsletter, was mailed and helped break the long silence in our Alumni relations.

Our Fall 1988 Rush delivered us with a class of 11 pledges. Thus far, the men of the Pledge Class of 1992 have shown strong unity and a desire to uphold responsibility. The increased strength of the fraternal structure in our chapter has forced out non-productive "dead-weight" and attracted once inactive brothers to the fraternity. Alumni Bob Hillman has recently joined us as an additional Alumni Advisor, and Alumni Sean Washak has consented to become our Resident Advisor and will be staying with us to assist with Chapter affairs.

Future goals for the upcoming term include much needed house improvements. We also have a variety of small and large scale goals to achieve this upcoming year as part of our continued progress as an evergrowing, strong chapter.

Rho Delta Rho wishes to extend its hand in an open invitation to all brothers and Alums to stop in if ever nearby. Thanks for taking the time to keep in touch.

#### ■ ALPHA PHI, Rutgers-New Brunswick

On October 28, 1987, 23 men were pinned by Executive Director Robert S. Goldman at Rutgers University in New Brunswick, New Jersey; thus refounding the Gamma Sigma Colony, which had been declared inactive by National. On November first two others were pinned by Chancellor Ari Fox. Under the guidance of Brothers David Lazar (Rho '85) and Howard Falkow, the class grew in dedication and unity, which culminated in the class initiation at Rho Chapter House, University of Pennsylvania, on February 20, 1988.

On March first, the first pledge class began at the new colony with the pinning of 12 candidates. Both the brothers and the candidates took pride in receiving recognition by the University of the newly renamed Alpha Phi Colony on April fourth. After a successful education program, the brothers and prospective brothers travelled to Lehigh University for initiation of the Alpha Pledge class.

The Alpha Phi Colony has been involved in all aspects of fraternity and university life and is working hard towards receiving a charter. The brotherhood of 36, has participated in interfraternal athletics and sports and has one of the highest grade point averages on campus — 2.99. Numerous social functions have been held, including a trip to Action Park over the Summer.

Alpha Phi hopes its first year is perceived as one of service to the community-at-large. Brothers organized a food drive last holiday season, participated in a blood drive, a homeless awareness program, CPR certification, and the Big Brother Program. Fundraising efforts have included T-shirt and candy sales. It is obvious that the Colony is headed toward a bright future.

*Editor's Note: Alpha Phi/Rutgers-New Brunswick was recently granted its charter by the Grand Council on October 30, 1988. The Colony took its new Greek designation, versus keeping the Gamma Sigma name in order to prevent any confusion with the local Gamma Sigma Fraternity, which still remains on the New Brunswick campus. The National Grand Council revoked the Gamma Sigma charter with TEP in 1985 for violations of the National Constitution.*

#### ■ SIGMA ALPHA SIGMA, Hofstra University

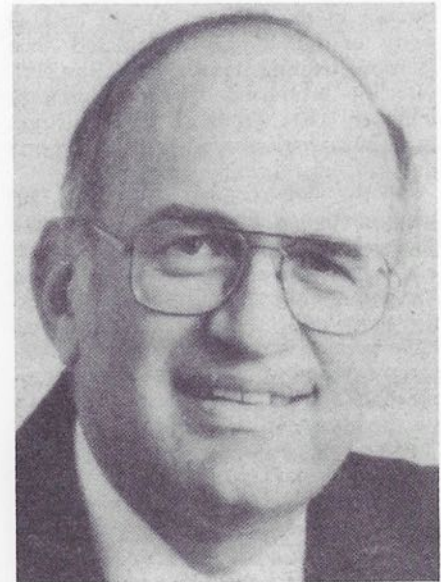
The Sigma Alpha Sigma Chapter of Tau Epsilon Phi at Hofstra was proud to host one of this year's Summer leadership conclaves. We were glad to see so many brothers from far away states such as Georgia and Michigan, together with the more local chapters of Cornell, CCNY, Adelphi, SUNY Binghamton, etc. Congratulations to Richard Leff, 1988 graduate of Hofstra, for receiving the I. "Doc" Schwartz Memorial Undergraduate of the Year Award, presented by none other than Doc's son, Justin, at the New York Conclave. Welcome back brother Tim MacCallum from his semester in Lyon, France. Although fraternity rush numbers are low this year at Hofstra, TEP attracted the most independent men overall. A successful pledge program was conducted by Steve Sabella and new Chancellor, Scott Stern, resulting in the initiation of 15 men. Our annual "invitation only" Crush Party, held late in the semester was a huge success. Brothers in the area are always welcome and encouraged to visit throughout the year.

**Brother Eli Evans Honored**

In the last issue of the PLUME, we briefly reviewed BROTHER ELI N. EVANS' monumental biography of JUDAH P. BENJAMIN, *The Jewish Confederate*. The book is now in its 6th printing. Most significantly, on September 27th, 1988, Senator Terry Sanford, D-North Carolina, hosted a reception in Brother Evans' honor in the Dirksen Office Building of the U.S. Senate calling it "Judah P. Benjamin Returns to the Senate."

By special invitation, more than 150 personages — a veritable "Who's Who" were invited and attended, including Senators, Congressmen, University dignitaries, Judges, and

makers and shakers on the Washington scene. Also present was Brother Elliott Levitas, Mu (Emory), former Congressman of the 4th District, Georgia. Not surprising, Brother Evans' father, "Mutt," his brother Bob and Uncle Bill Naxon, all of Omega Chapter (North Carolina) were in attendance. In Brother Evans' words, "Dad (referring to "Mutt") was flying with pride," "Mutt," of course, needs no introduction to TEP as he is a former Consul and past President of the TEP FOUNDATION, as well as a Mayor of Durham, North Carolina for 12 years.



*Mickey Steinberg*

**Brother Stanley "Mickey" Steinberg,** Phi (Georgia Tech) '54 has been appointed Senior Vice President, Project Management, United States and Japan, of Walt Disney Imagineering. Brother Steinberg will be responsible for the creation of Disney theme parks and leisure ventures, both in this country and Japan.

Brother Steinberg came to Disney Imagineering from the famous Portman Company, based in Atlanta, where he was Executive Vice President, responsible for managing the company's vast real estate and hotel assets.

**Brother Albert J. "Bud" Schiff,** Omega (North Carolina) '64 Past Consul (International President of TEP) 1983-85, has been appointed Senior Executive Vice President of MONY (Mutual of New York) Financial Services and elected to the Governing Board of the Company.

Brother Schiff is past Chairman of the Million Dollar Round Table Top of the Table, and is currently First Vice President of the Association for Advanced Life Underwriting. Prior to his appointment, he was one of MONY's leading field underwriters.

**Brother Ben Alperstein,** Tau Beta (Maryland) '39 has been singularly



Dear Editor:

I just thought I would share a mini-reunion with you. For all the many years that have gone by since college, I still number four of my TEP-Epsilon Theta (Queens College) fraternity brothers amongst my best friends and this, despite the fact that we are more than 1,500 miles from the nearest of them.

Over the years telephone calls and letters have been the predominant form of communication. This June, however, was a special moment for three of us — Kenneth Lemberger ('68), Ted Kantor ('67) and myself, along with our wives, celebrated our anniversaries with our college sweethearts (20 years in the case of two

and 7 in the case of myself). All three couples met in California, celebrated our anniversaries together and celebrated a friendship, the depth of which cannot be marked by words, that grew out of being fraternity brothers. The ties that have bound us have outlasted even some ties to blood relatives. Young men in college today, who are entering the ranks of the fraternity, can look forward with unexpected pleasure to enduring TEP friendships.

Fraternally yours,  
Gary B. Lawson  
Epsilon Theta (Queens) '66

honored by being named to the University of Maryland, the State of Maryland, and the District of Columbia Athletic Halls of Fame. Brother Alperstein, a prominent Washington businessman, a champion lightweight boxer while at college, has in recent years served as Chairman of both the State of Maryland and District of Columbia Boxing Commissions. In the mid-50's he was a member of TEP's Grand Council and chaired TEP's 1955 and 1969 Washington Conventions.

**Brother David C. Steinberg**, Epsilon Eta (Drexel) '65, has been promoted to Vice President, Marketing, with responsibilities for all aspects of sales and marketing of Sutton Laboratories, Inc., products. Mr. Steinberg has been with Sutton for six years and has been Sales Manager for the same period of time. Brother Steinberg is TEP's Regional Governor for District 4.

**Brother Bernard Hirsch** and son **Brother Gregory Hirsch**, Nu (University of Georgia) '58 and '85, are both Certified Public Accountants and associates in Savannah.

**Brother Gordan B. Stine**, Upsilon (Charleston) '44, has been elected to serve on the College of Charleston Board of Trustees by the South Carolina State Legislature. He is a past president of the Alumni Association, and has also been re-elected Chairman of the Clemson University Extension Service Advisory Council for 1988-89.

**Brother Roger A. Strauch**, Delta (Cornell) '78, was the recipient of the Samuel J. LeFrak Scholarship as an undergraduate and is now President of Teknikron Communications Systems, Inc., of Berkeley, California.

**Brother Jerome A. Schine**, Tau Alpha (Florida) '49, a Tampa CPA, has been elected to the Office of President-Elect of the National Association of State Boards of Accountancy (NASBA) for 1988-89.

**Brother Martin Wolff**, Tau Beta (Maryland) '60, is Judge of the Fifth Judicial Circuit of the State of Maryland.

**Brother Martin Payson**, Delta (Cornell) '57, is Executive Vice President of Warner Communications.

**Brother Lawrence Bembry**, Epsilon Psi (A.I.C.) '67, is Director of Human Resource Programs for the U.S. Forest Service, USDA, and has the distinction of being the only black Jewish Senior Executive in Service.

**Brother Adam Doner**, Tau Alpha (University of Florida) '80, is a partner and senior litigator in a prestigious law firm in Boca Raton, Florida at the age of 30 years old!



**Brother Kevin L. Wassner**, Epsilon Phi (Penn State) '83 is presently Assistant Principal at Almondale Middle School, California.

**Brother Eugene Margolis**, Epsilon Iota (R.P.I.) '57, was recently cited for outstanding contributions this year in B'nai B'rith — the oldest and largest Jewish service organization in the world. Margolis was accorded highest honors as the outstanding B'nai B'rith member in District Five at its 112th Annual Convention in Tarpon Springs, Florida.

**Brother William Matson**, Tau Zeta (Maine) '52, former Chancellor of his chapter, is now Chancellor of the Champlain Regional College, Canada.

**Brother Alan E. Master**, Delta (Cornell) '61, is President of the Ensign Bank, FSB, New York.

**Brother Ralph L. Klein**, Tau Beta (Maryland) '49, is President and CEO of Klein Super Thrift Food Stores in Maryland.

**Brother Richard Sherman**, Epsilon Phi (Penn State) '65 is Chief Executive Officer of Church's Fried Chicken with facilities throughout the United States.

**Brother Marc Turteltaub**, Rho (Penn) '67, is President of the Money Store Investment Corp.

**Brother Leonard Burchman**, Tau Eta (Lehmen) '50, who authored the beautiful story of the 40th Anniversary Reunion of Tau Eta Chapter in the last issue of the PLUME, is Assistant Secretary of the U.S. H.U.D. (Housing and Urban Development).

**Brother Theodore G. Bloom**, Tau Beta (Maryland) '48, is currently Judge of the Maryland Court of Special Appeals.

**Brother Kenneth M. Selig**, Omega '72, has been appointed co-director of the Forensic Consultation Program of the Institute of Living in Glastonbury, CT.

## TEP History Welcomed by University Librarians

Under the auspices of the Joseph Ford Memorial Fund of the TEP FOUNDATION, INC., each library of the college or university in which TEP maintains an active or inactive chapter was issued a copy of Sid Suntag's acclaimed HISTORY OF TAU EPSILON PHI. Some 120 copies in all were distributed. Most gratifying were the responses received from all of the Chief Librarians who accepted the volume with thanks. The HISTORY will therefore be on the appropriate shelf of the libraries for the edification of undergraduates and alumni.

## Chapter Eternal

*"... To Hold Eternally Before Us  
The Memory of Those We Have Loved and Lost ..."*

Sidney Shulman, Zeta Lambda Phi (Temple) '38  
 Gordon Toll, Tau Alpha (Florida) '58  
 Walter S. Gersten, Rho (Penn) '55  
 Morton Gollis, Tau Omega (Rhode Island) Chapter Founder '50  
 William Levinson, Sigma (Syracuse) '32  
 Myron Tarbis, Tau Chi (Louisville) '54  
 Herbert Lewitt, Tau Alpha (Florida) '52  
 Harold Margolin, Gamma (N.Y.U.) '40  
 Ephram Feingold, Eta (Tufts) '20  
 Stanley Gutman, Epsilon Gamma (N.Y.U. Hts) '71  
 Charles Gaffner, Epsilon Mu (Lehman) '69  
 Alex Rosenfield, Phi (Georgia Tech) '22  
 Harold Bobin, Psi (Illinois) '32  
 I.B. Corwin, Gamma (N.Y.U.) '28  
 Anthony Avery, Epsilon Mu (Lehman) '80  
 Abraham Gordon, Omega (North Carolina) '38  
 Daniel P. Katz, Kappa (Vermont) '61  
 Beryl Rubnitz, Nu (Georgia) '50  
 Jesse Heilman, Tau Theta (George Washington) '36  
 William Landes, Sigma (Syracuse) '30  
 Lionel R. Bauman, Rho (Penn) '32

Frederick Weinberg, Epsilon Sigma (Tampa) '65  
 William Pearlman, Phi (Georgia Tech) '23  
 Alexander W. Kruger, Zeta (N.Y.U. Bellevue) '21  
 N. Joseph Ross, Gamma (N.Y.U.) '28  
 Kenneth J. Herman, Rho Delta Rho (Illinois Institute of Tech) '77  
 Gary Grossman, Epsilon Mu (Lehman) '74  
 Alvin Weinberg, Tau Mu (UConn) '45  
 Herbert S. Holiner, Alpha (Columbia) '28  
 Sam Hoffman, Gamma (N.Y.U.) '24  
 Ephram Goldman, Omicron (McGill) '23  
 Ira Shapiro, Tau Beta (Maryland) '58  
 Alexander Young, Delta (Cornell) '28  
 Seymour West, Delta (Cornell) '41  
 John L. Mayer, Delta (Cornell) '56  
 Leonard Heiman, Phi (Georgia Tech) '46  
 Mike Trilling, Alpha Beta (American) '63  
 Howard Slater, Alpha (Columbia) '35  
 William Z. Leeds, Rho (Penn) '89  
 Charles T. Schechtman, Kappa (Vermont) '27  
 Maurice Miller, Omega (UNC-Chapel Hill) '31  
 Paul Horowitz, Sigma (Syracuse) '28

To The Editor:

I am writing to express my sympathy to the family and friends of William Z. Leeds, Rho Chapter (U. Penn), a member of the Class of 1989. Willy, as he was called, died last summer of lymphatic cancer.

Members of the fraternity were very supportive of Willy and his family during his brief illness. They were also generous with their time and talents in creating a memorial in his name.

In addition to making a donation to the American Cancer Society in Willy's name, fraternity members participated in the renovation of a room in the TEP house and dedicated it in Willy's memory on April 24, 1988. Willy's grandfather, the Rev. J. Stuart Dickson, spoke at the ceremony with great warmth and appreciation of the fraternity's honoring his grandson.

Those who want more information may call the Chancellor, Mike Brand (Willy's closest friend), at 215-222-6588.

David K. Lazar, '84 W  
 Chapter Advisor

*Sidney S. Suintag cont.*

without elected officers or committees. This experiment, as expected, ended in disaster in less than a year, with the chapter being recolonized later on.

There were many other wild ideas that were experimented with by some chapters, but like the above ones failed, either because these chapters went inactive or wiser heads prevailed and the chapters righted themselves.

One movement that arose during this period among a significant number of chapters from grass roots sentiment, was so important, innovative and far reaching that the TEP National leaders immediately gave it their blessing. These chapters claimed that the whole concept of pledging, with the hazing that accompanied it, was non-relevant (there's that word again), that it must be abolished and replaced with a system that was "rel-

evant." At last, Fraternity elders exclaimed, here was the chance to get rid of pledging and its attendant nonsense and hazing, which had been the bane of all Fraternity leaders since time immemorial.

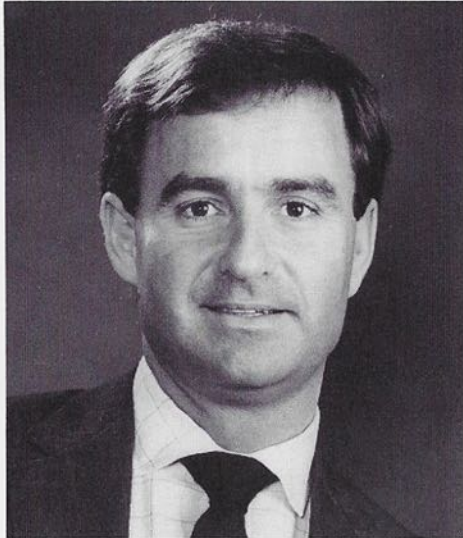
This writer was therefore directed by the Grand Council at the time to produce a new program that would replace the old "pledging" system. In a matter of weeks a guidebook was produced called the "Candidate Education Manual." Among its highlights was the elimination of the word and concept of "pledging" to be replaced by "candidate" for brotherhood. The manual further explained that the word "training" was inappropriate as animals are trained, while human beings are educated. The manual also eliminated all personal services by candidates and, of course, strongly reiterated the National ban on all forms of hazing, physical or psychological.

The new manual was adopted at the 1971 Grand Chapter Meeting (Convention) with no opposition. At last TEP leaders exclaimed almost in unison: "We've finally gotten rid of pledging!" Right? Wrong — because once the crisis on campus eased, chapters once again referred to "pledges" and hazing, although restricted to silly games, once again reared its ugly head to this day, despite constant warnings from the professional staff and penalties imposed, where indicated.

The Fraternity system has now reached the crossroads. It can either go forward with a mature program of indoctrinating its prospective members, without the often stupid "games" that were the hallmark of "pledging," and worse, at times got out of hand, or persist in pursuing a program that is constructive and relevant as we near the 21st Century.

The choice is yours.

# Adaptation: Fraternity Key to Today's Serious Issues



*By Chuck V. Loring  
President, National Interfraternity Conference*

The college fraternity has existed for over 200 years and is the oldest student organization on the American university campus. Fraternities have survived because over the years they have been able to adapt to changes in society and to successfully address issues facing higher education. Today, more than ever before, fraternities find themselves faced with many concerns, both societal and campus driven, with which we must reach out and deal.

The issues that will be discussed in the following paragraphs could each individually be the topic of an article. By summarizing these issues briefly I run the risk of over simplifying their seriousness. This article is not meant to be an in-depth analysis but merely an overview of critical areas of which all fraternity undergraduates are having to deal. It is our hope that alumni will gain a better understanding of these concerns.

## Scholarship

Most college social fraternities started as academic societies to some degree. Scholarship has always been an important part of fraternity life and most organizations mention it frequently in their rituals, creeds, and esoteric works. For many decades fraternity men had better grades than the campus average for all male students. This is no longer the case and university officials have noted with justifiable concern the decline of academic achievement among fraternities.

National fraternities, campus IFCs, alumni organizations, and individual chapters must all work to again emphasize scholarship. Excellent scholarship must be rewarded. Minimum levels of achievement must be enforced for associating, initiating, and for holding office. We must again make our chapters a source of academic pride and not embarrassment.

## Alcohol

Even the most uninformed individual knows that society's values towards alcohol have changed dramatically in recent years. All states now have a legal drinking age of 21. Mothers Against Drunk Driving (MADD) has practically become a household word. Universities that ignored alcohol consumption in campus residences during the 70's are again enforcing drinking regulations. Substance abuse is very much a priority on the national agenda.

The "open" fraternity party as stereotyped in the movie *Animal House* has become but a memory on many campuses and soon will have disappeared on all campuses. The courts, society, and campus administrators no longer tolerate the serving of minors. National organizations and individual chapters cannot expose themselves to the legal liability that such activities create. Millions of dollars due to lawsuits have been paid out over the last two years as a result of these activities. Fraternity chapters have been closed and national organizations have been put into precarious financial condition from these lawsuits.

Risk management associated with alcohol is without a doubt the most serious and most difficult issue that undergraduate fraternity men face. Today's generation of college men grew up drinking in high school (many in junior high) and now fraternity and university leaders are telling them to drink "responsibly." Many students feel they are having a "right" and not a "privilege" taken away from them.

National fraternities are moving quickly, with the help of college administrators, to establish educational programs and guidelines that are consistent with societal and legal expectations. Chapters are no longer being allowed to purchase alcohol with chapter funds, a logical step since most chapter members are under 21. Open parties, those events where invitations are not used, are no longer permitted. All fraternity rush activities are "dry." The traditional "keg" is being replaced by the can to allow for greater control of who is served and to allow the individual better recollection of the amount consumed.

## Hazing

Fraternities have worked very hard to eliminate hazing from the college campus. As we know from last year's media accounts it still occurs, not only in social fraternities, but in secret student organizations, eating clubs, and "local" fraternities. With over 5,000 chapters of social fraternities around the country it only takes a hazing incident at one of these chapters to cast a shadow over all of them. Hazing contradicts everything that the fraternity movement stands for.

Fraternity leaders, the courts, and colleges no longer have the slightest bit of tolerance for hazing. Patience has not only worn thin, it has worn out! Chapter officers have been criminally prosecuted when a chapter has been found to haze. Members have been expelled from universities and their fraternity when found participating in such activities. Fraternities, once reluctant to close entire chapters, now do so without hesitation.

Most fraternity chapters have positive and constructive membership education programs. Chapters that don't, jeopardize

the entire fraternity movement. Fraternities have put a tremendous amount of time and resources into this important programming area and will continue to do so.

**Housing**

The chapter home has long been an important part of most fraternity chapters. I say most, because all fraternities have many chapters that do not have homes and still have a valuable fraternity experience. The preservation and maintenance of our chapter homes is causing serious concern.

The decade of the 70's was not only a period of low membership but also a period of low alumni involvement. Most chapters did not put aside funds for building reserves during this era and many alumni housing boards went out of operation. The long term welfare of our chapter homes was virtually ignored.

Many chapters are in older homes that need serious attention. Since undergraduates naturally have a short term outlook, the involvement of alumni is crucial to proper maintenance of our properties. Insurance companies are requiring that homes be brought up to current building codes and safety standards.

National groups are making a renewed attempt to educate undergraduates and alumni officers about the need for sound property management. This requires the continuity provided by dedicated alumni and undergraduates who not only respect their chapter home but are willing to set aside funds for future generations.

**Human Dignity**

The sexual abuse of women has been one of the most discussed topics on the college campus this past year. "Date rape" or "acquaintance rape" has been a subject well covered by the national media. Fraternity men have unfortunately all become colored by "Animal House" stereotypes. The need to reverse this image, accurate or otherwise, is receiving increased attention.

The term "fraternity man" was once thought to be synonymous with "gentleman." We hope to make it so once more. Universities and fraternities are making great efforts to carry out educational programs that break down sexual and racial stereotypes. They are trying to teach respect, understanding, and tolerance. We have discovered that values once taught by the family and the church or synagogue are not now possessed by many entering college students.

The National Interfraternity Conference recently convened a "Commission on Values and Ethics." Their statement of basic fraternity values and expectations is an excellent summary of what we are attempting to teach.

**A Statement of Fraternal Values and Ethics**

**Basic Expectations**

In an effort to lessen the disparity between fraternity ideals and individual behavior and to personalize these ideals in the daily undergraduate experience, the following Basic Expectations of fraternity membership have been established.

I

I will know and understand the ideals expressed in my fraternity Ritual and will strive to incorporate them in my daily life.

II

I will strive for academic achievement and practice academic integrity.

III

I will respect the dignity of all persons; therefore I will not physically, mentally, psychologically or sexually abuse or haze any human being.

IV

I will protect the health and safety of all human beings.

V

I will respect my property and the property of others; therefore, I will neither abuse nor tolerate the abuse of property.

VI

I will meet my financial obligations in a timely manner.

VII

I will neither use nor support the use of illegal drugs; I will neither abuse nor support the abuse of alcohol.

VIII

I acknowledge that a clean and attractive environment is essential to both physical and mental health; therefore I will do all in my power to see that the chapter property is properly cleaned and maintained.

IX

I will challenge all my fraternity members to abide by these fraternal expectations and will confront those who violate them.

\*\*\*\*\*

The issues and problems I have covered are not fraternity problems alone, they are also society's problems. They exist across the college campus, not just in fraternities. Because fraternities are large, organized groups that are highly visible, these problems become all the more apparent. Fraternities also espouse great values and higher ideals than most student organizations, and are thus held to a higher standard.

You should also not get the impression by reading this article that all is doom and gloom. It certainly is not! This article was to address critical issues facing fraternities and was not meant to be an overview of the fraternity movement in general. All fraternities are enjoying increased membership, a larger number of chapters, and renewed alumni involvement. The greek systems on most campuses are flourishing. We continue to provide needed leadership and management training to thousands of young men while providing a home away from home. Hundreds of thousands have benefited by their associations with other college fraternities. By dealing with the problems we now face, not by avoiding them, can we insure that thousands will continue to enjoy these same benefits.

*Editor's Note: Chuck Loring, president of the NIC, served as Grand President of Phi Sigma Kappa 1975-79. He has maintained a very busy speaking schedule since being elected NIC president last December. This summer he spoke at the following fraternity and sorority national conventions: Gamma Phi Beta, Kappa Alpha Order, Alpha Sigma Phi and Psi Upsilon. He also recently spoke at the Interfraternity Institute, New Field Staff Conference, USC Order of Omega Retreat, Western Regional IFC and San Diego State Greek Week. Chuck is recognized nationally as one of the most articulate and dynamic Greek leaders.*

*This article was reprinted with the permission of the author and the Signet of Phi Sigma Kappa Fraternity.*



TAU EPILON PILL

**IF YOU'RE INTO DOPE,  
YOU MIGHT AS WELL SMOKE THIS.**



There's one sure way to see  
your future go up in smoke.  
Do drugs.  
Last year alone, America's

businesses lost more than \$60  
billion to drugs. So this year,  
most of the Fortune 500 will be  
administering drug tests. If you

fail the test, you're out of a job.  
The message is simple.  
Doing drugs could blow your  
whole education.

**WE'RE PUTTING DRUGS OUT OF BUSINESS.**

*Partnership for a Drug-Free America*

# Announcing new official **TEΦ** rings!

**SPECIAL**

**INTRODUCTORY**

**OFFER!**



#3304B



#3326CB

All rings are crafted in 10 karat gold with the option of having your Greek letter chapter inscription on the side of the ring.

**Balfour®**

**TEΦ Order Form**

<b>Special</b>	#3304B	Official Signet Ring	.....	\$249.50
<b>Introductory Prices</b>	#3326CB	Official Oval Black Onyx Ring with TEΦ Crest	.....	239.75

Ship to:

Name (Please Print) \_\_\_\_\_

Address \_\_\_\_\_

City \_\_\_\_\_ State \_\_\_\_\_ Zip \_\_\_\_\_

Ring Size

Qty.	Style No.	Description	Price	Total
	#3304B	Official Signet Ring	\$249.50	
	#3326CB	Official Oval Black Onyx Ring with TEΦ Crest	239.75	

VISA     MasterCard

Card good through \_\_\_\_\_

Signature \_\_\_\_\_

\*Full payment prepaid by check or credit card requested or 25% minimum deposit required on orders w/ deposit balance due C.O.D.

Net Sale

Your State & Local Tax

Shipping

Total

\*Less Deposit

Amount Due

2.00

Mail Orders to: Balfour Co. - Fraternity, 25 County St., Attleboro, MA 02703

## TEP Sportswear available soon!!

Lately, many alumni and undergraduate brothers have made requests to the National Headquarters for TEP fraternity sportswear. To date, the National Fraternity has been unable to stock many of the items you have asked for. Yet, in the near future, Tau Epsilon Phi will be enter-

ing into an agreement with a national supplier of fraternity sportswear and paraphernalia. These items will then be made available direct from the supplier at a reduced cost to our chapters and brothers. Watch for details in upcoming editions of The Plume.

## Tau Epsilon Phi Books And Gifts Order Form

Name \_\_\_\_\_ Chapter \_\_\_\_\_

Address \_\_\_\_\_ Grad. Yr. \_\_\_\_\_

City, State \_\_\_\_\_ Zip \_\_\_\_\_ Phone # ( ) \_\_\_\_\_

Items: \_\_\_\_\_ Quan- \_\_\_\_\_

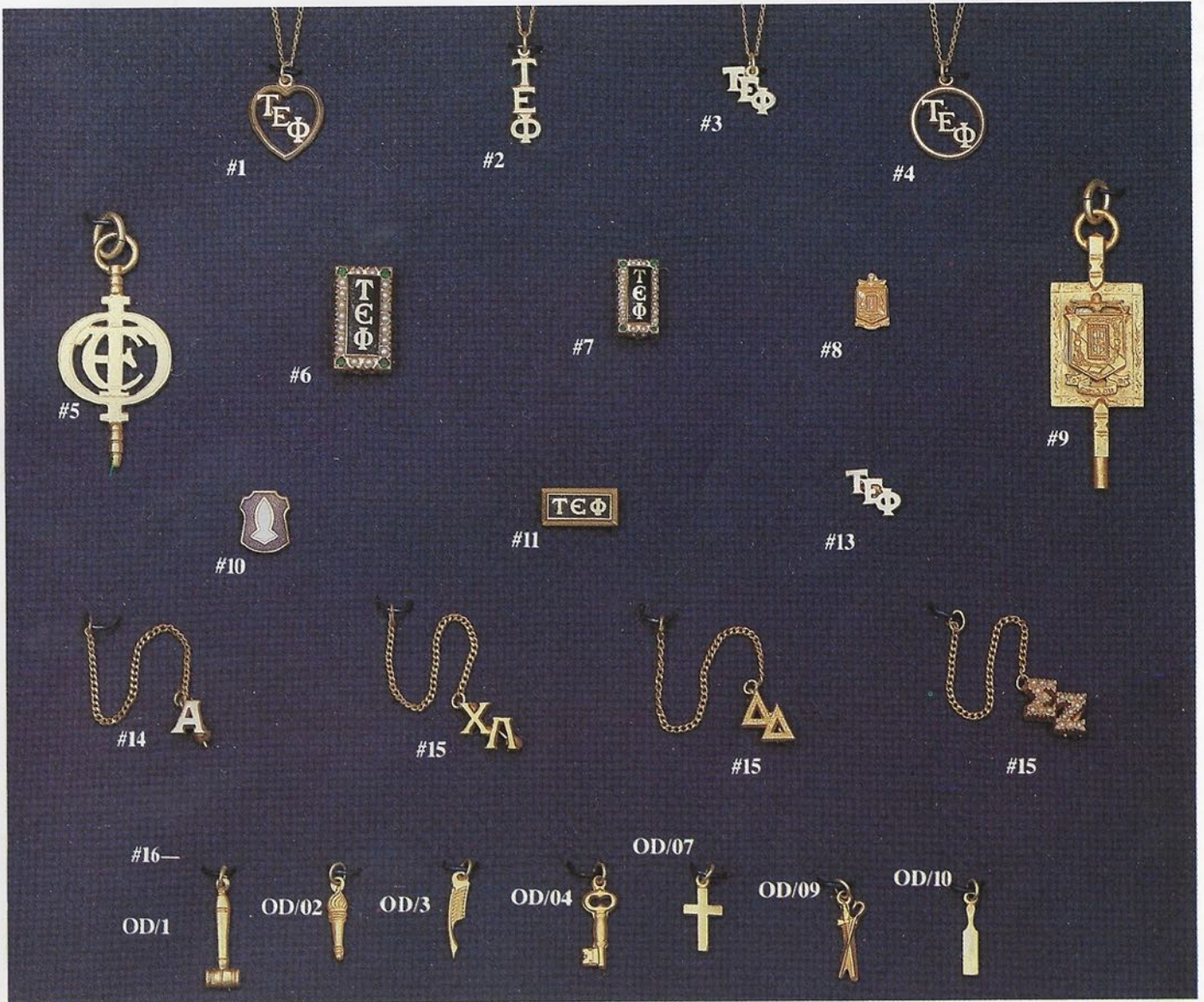
\_\_\_\_\_ tity \_\_\_\_\_

\_\_\_\_\_ \_\_\_\_\_

\_\_\_\_\_ \_\_\_\_\_

Make Checks Payable to: Tau Epsilon Phi Fraternity  
200/3088 Mercer Univ Dr., Atlanta 30341

# TAU EPSILON PHI



Description	Gold Kase		10K Yellow Gold		Sterling Silver		Line Total
	Quantity	Price	Quantity	Price	Quantity	Price	
#1 ML 12 Heart with Monogram Lavalier		\$11.50		\$29.00		\$13.20	
#2 ML 02-A Vertical Monogram Lavalier		\$ 8.05		\$26.45		\$11.80	
#3 ML 02-S Staggered Monogram Lavalier		\$ 8.05		\$26.45		\$11.80	
#4 ML 09 Circle with Monogram Lavalier		\$11.50		\$29.00		\$13.20	
#5 Meritorious Award		\$30.00		\$62.00			
#6 102 Crown Set Pearl Badge with 4 Synthetic Emeralds				\$95.00			
#7 202 Miniature Crown Set Pearl Badge				\$77.00			
#8 CR 25 Crest Pin (Gold Filled)		\$ 7.75		\$25.00			
#9 Chancellor's Key		\$35.00		\$92.00			
#10 PL Pledge Button		\$ 2.50					
#11 301 Sister Badge (Gold Filled)		\$16.00					
#12 302 Sister Badge Crown Set Pearl (Not Shown)				\$77.00			
#13 MG 11 Monogram Pin (Gold Filled)		\$ 7.75		\$25.00			
#14 Single Letter Chapter Guard CG 06 Plain		\$12.65		\$25.00		\$19.00	
CG 08 Crown Set				\$80.30		\$44.30	
CG 09 Etched		\$14.95		\$27.30		21.55	
#15 Double Letter Chapter Guard CG 06 Plain		\$13.80		\$33.60		\$24.15	
CG 08 Crown Set				\$69.30		\$54.60	
CG 09 Etched		\$17.25		\$37.65		\$27.90	
#16 OD Officers' Dangles (specify style)		\$ 7.50		\$17.20		\$ 7.20	

Price subject to change

Cost of Merchandise	
Shipping and Handling	\$ 4.00
State Tax (IL Only) 8%	
<b>Total Sale</b>	

Ship To: \_\_\_\_\_  
 Name \_\_\_\_\_  
 Chapter Name (for Chapter Guards only) \_\_\_\_\_  
 Address \_\_\_\_\_  
 City \_\_\_\_\_ State \_\_\_\_\_  
 Zip Code \_\_\_\_\_ Phone Number \_\_\_\_\_

Make checks payable and send order directly to:  
**TAU EPSILON PHI FRATERNITY**  
 Suite 200  
 3088 Mercer University Drive  
 Atlanta, GA 30341  
 (404) 454-8377

## Tau Epsilon Phi Fraternity

3088 Mercer University Drive  
Suite 200  
Atlanta, GA 30341

Second Class Postage  
Paid at  
Atlanta, GA and  
at additional  
mailing offices

Return Postage Guaranteed

PARENTS: Please forward this copy to your son if he is at school.

# TAU EPSILON PHI DIRECTORY

The Tau Epsilon Phi National Fraternity  
Founded at Columbia University on October 19, 1910.

## THE GRAND COUNCIL OF TAU EPSILON PHI

### Executive Committee:

Gerald A. Denmark, *Consul*  
Leo M. Gordon, *Vice-Consul*  
Stuart Blumberg, *Vice-Consul*  
Larry Liebross, *Vice-Consul*  
Howard D. Fish, *Undergraduate Vice-Consul*  
Steven A. Rich, *Quaestor*  
Michael Berlinger, *Tribune*  
Albert J. Schiff, *Past Consul*  
Alfred C. Versacci, *Past Consul*

### Members-at-Large:

Mark Abramson	Juan Medina
Donald Anspauch	Ron Charpentier
Richard C. Barrett Jr.	Jeff Silverbush
Larry Baumwald	John I. Smeyne
Alan Goldsmith	Rick Snyderman
Jeffrey Gordon	David Lazar
Harris Jacobs	Edward Barry
William Yee	Ted Bradpiece
Harold Leviton	

### Undergraduate Members:

Kevin Cranman	Brian Hill
Matt Gewirtz	Paul Helwing

### National Headquarters Staff:

Jonathan M. Seidel, *Executive Director & Editor*  
Grace Jenkins, *Comptroller & Office Manager*  
Marie Garofalo, *Administrative Assistant*  
Ronald V. Brooks, *Director of Chapter Services*  
Sidney S. Suntag, *Executive Secretary Emeritus/Director of Alumni Affairs*  
Cindy Newport, *Administrative Assistant*

## THE CHAPTER ROLL OF TAU EPSILON PHI

Bradley University	Massachusetts Institute of Technology
Bryant College	New Jersey Institute of Technology
City College of New York	University of North Carolina
Clarkson College	Penn State University
Cornell University	University of Pennsylvania
University of Southern California	University of Rhode Island
Drexel University	Rochester Institute of Technology
Emory University	Rutgers University-Camden
University of Florida	Rutgers University-New Brunswick
University of South Florida	St. Thomas University
University of Georgia	Syracuse University
George Washington University	SUNY-Albany
Hofstra University	SUNY-Geneseo
Husson College	SUNY-Binghamton
Johns Hopkins University	Tulane University
University of Illinois	Virginia Commonwealth University
Illinois Institute of Technology	University of Virginia
Lehigh University	Western New England College
University of Maine	
Marietta College	
University of Maryland	

### Colonies:

Adelphi University	Ohio State University
Clark University	Queens College
University of Connecticut	Rensselaer Polytechnic Institute
Florida International University	SUNY-New Paltz
University of Hartford	UCLA
University of Michigan	
Northeastern University	