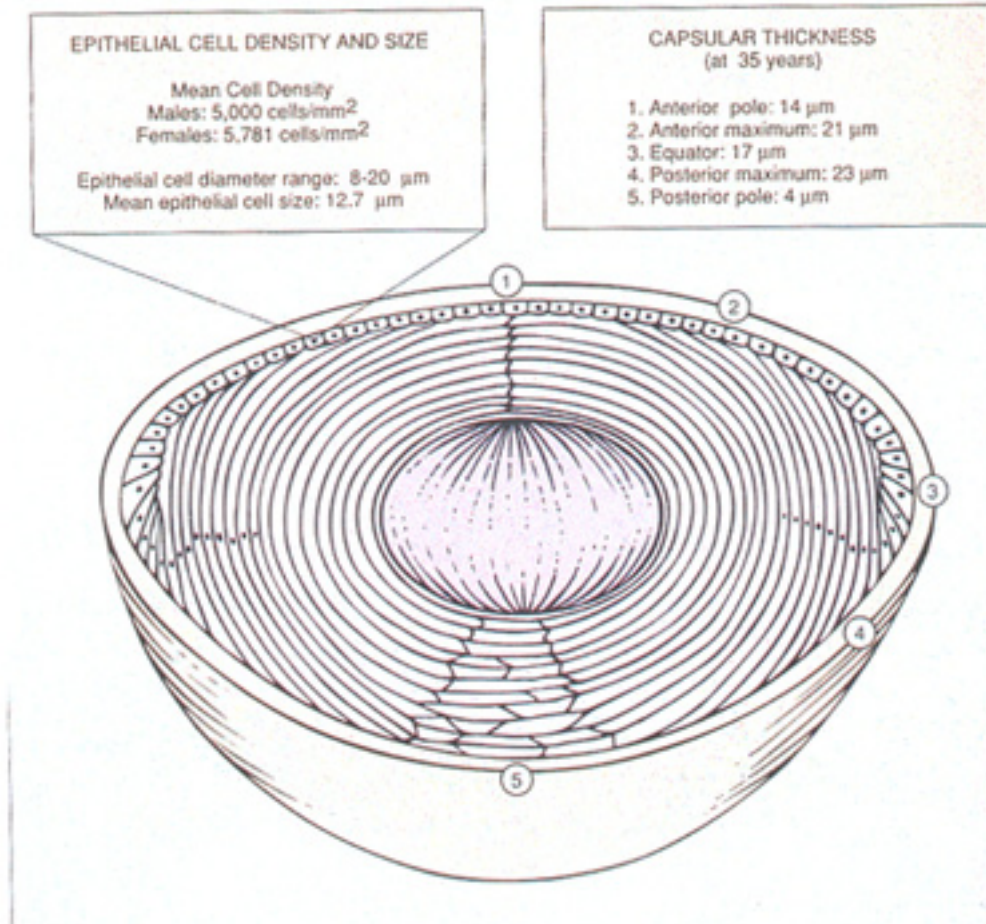


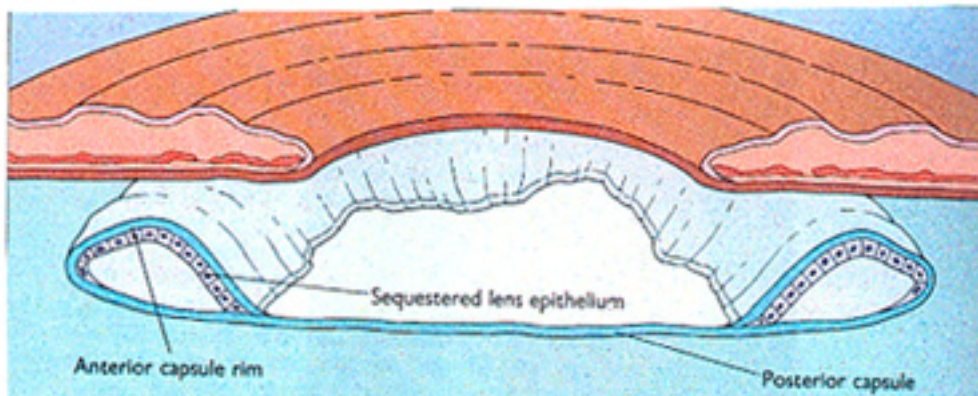
FIGURAS.

FIGURA 1.



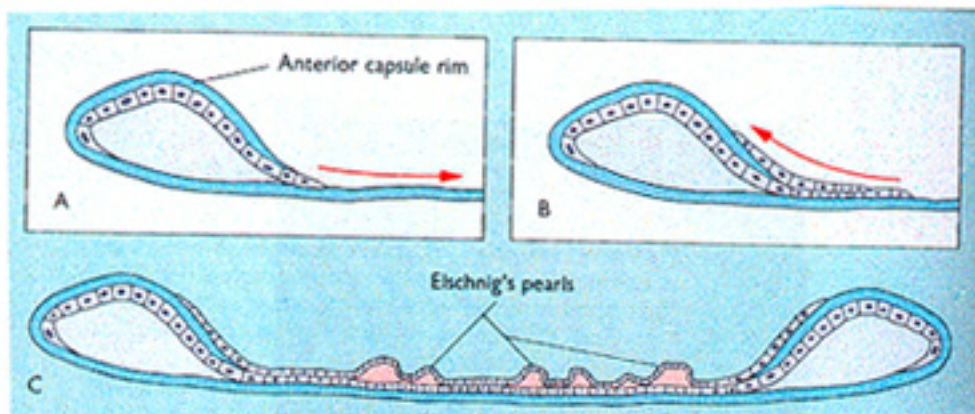
Esquema anatómico del cristalino humano, 1,2. polo anterior. Lugar donde se observan las células epiteliales. 3. Región ecuatorial. 4,5. polo posterior. En el centro se observa el núcleo y alrededor de mismo las fibras del cristalino.

FIGURA 2



En este esquema se aprecia la relación que guardan las células epiteliales y la cápsula anterior y posterior del cristalino después de la cirugía de catarata y en ausencia de una lente intraocular. (Imagen del libro "Lens and cataract" Jaffe N. Horwitz J.)

FIGURA 3.



Después de la cirugía de catarata las células epiteliales tienen la tendencia de migrar (A) sobre la cápsula posterior del cristalino. Debido a sus características biológicas se agrupan entre sí (B) y después de migrar y proliferar forman las denominadas perlas de Elschnig (C). (Imagen de libro "Lens and cataract" Jaffe N. Horwitz J.)

FIGURA 4.

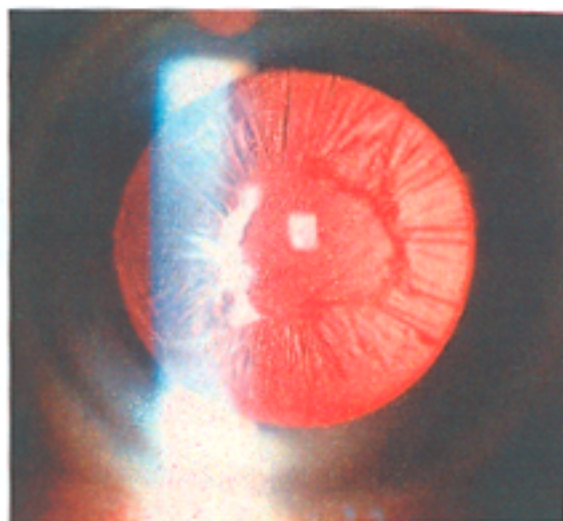
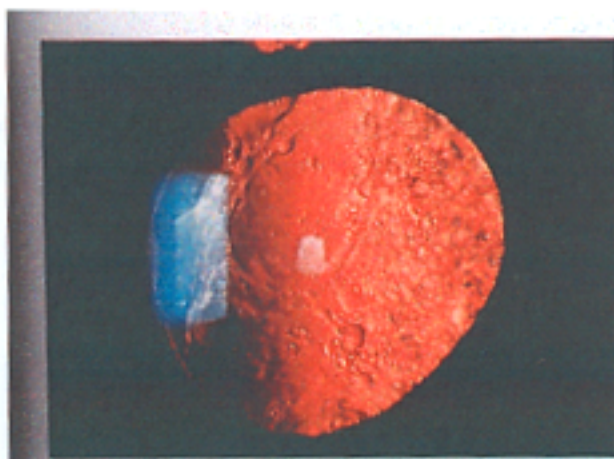


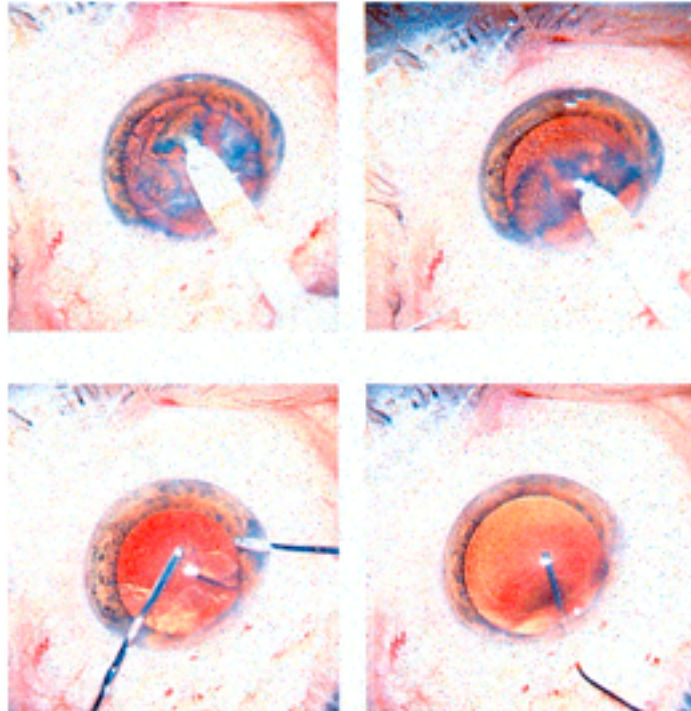
Imagen característica de fibrosis de la cápsula posterior.

FIGURA 5.



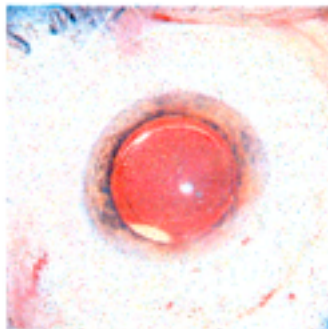
Fotografía de Perlas de Elschnig en una catarata secundaria.

FIGURA 6.



La aspiración de las células epiteliales del cristalino se realiza una vez que se ha emulsificado y aspirado el núcleo y la corteza del cristalino, mediante una cánula de aspiración y otra de irrigación, como se observa en las imágenes inferiores.

FIGURA 7.



Cirugía finalizada una vez que se ha realizado aspiración de las células epiteliales (pulido capsular) y colocado la lente intraocular.

BIBLIOGRAFIA

ANATOMIA Y EMBRIOLOGIA DEL CRISTALINO.

1. -Costello MJ, McIntosh T, Robertson JD. Distribution of Gap junction and square array junctions in the mammalian lens. *Invest. Ophthalmol. Vis.Sci.* 1989; 30:975-979
2. -Jakobiec F. *Ocular Anatomy, embryology and teratology.* Cap. 1,2,3,4,12. Harper and Row. Publisher. Philadelphia. 1982.
3. -Hendrix RW, Zwann J. The matrix of the optic vesicle- perceptible lens interface during induction of the lens in the chicken embryo. *J. Embryo. Exp. Morphol.* 1975; 33: 1023-1049.
4. -Kuszak JR. *Embryology and Anatomy of the lens.* Duane's clinical Ophthalmology on CD-ROM. Lippincott-Raven. Publishers. Philadelphia 1998.
5. -Kuszak JR, Enneser CA, Umlas J. The ultrastructure of fiber cells in primate lenses: A model for studying membrane senescence. *J. Ultrastruc. Mol. Struct. Res.* 1988; 100:60-66.
6. -Kuszak JR, Macsai MS, Bloom K. Cell to cell fusion of the lens fiber cell in situ: Correlative light, scanning electron microscopic, and freeze fracture studies. *J. Ultrastruc. Res.* 1985. 93:144-150.
7. -Maisel H. *The ocular lens. Structure, Function and Pathology.* Marcel-Dekker Inc. 1985. Cap. 1 New York.
8. -Rafferty NS, Scholz DL. Polygonal arrays of microfilaments in epithelial cells of the intact lens. *Curr. Eye Res.* 1984. 3:1141-1145.
9. -Worgul BV, Merriam GB, Szechter A. Lens epithelium and radiation cataract. Preliminary studies. *Arch. Ophthalmology* 1976. 84:996-999.
10. -Zwaan J, Bryan PR, Perace T. Interkinetic nuclear migration during the early stages of the lens formation in the chicken embryo. *J. Embryol. Exp. Morph.* 1969. 21:71-73.
11. -Jaffe J, Horwitz J. *Lens and cataract.* Grower Medical Publishing. Raven Press. New York 1992.
12. -Wakely J, Fisher RF. Lens epithelium microscope anatomy. *Anatomy Journal* 112: 207. 1976.

BIBLIOGRAFIA.

FISIOLOGIA Y BIOQUIMICA DEL CRISTALINO. CIRUGÍA DE LA CATARATA.

1. Moses R, Hart W. Fisiología del ojo Adler. Cap. 10. Editorial panamericana. Buenos Aires. 1988.
2. Lo WK: Adherens junctions in the ocular lens of various species: ultrastructural analysis with an improved fixation. *Cell Tissue Res* 254:31, 1988
3. Rae XL, Dewey J, and Rue JS et al: maxi calcium activated potassium channel from chick lens epithelium. *Curr Eye Res* 9:847, 1990
4. Delamere NA, Duncan G: A comparison of ion concentrations, potentials and conductances of amphibian, bovine and cephalopod lenses. *J Physiol* 272:167, 1977
5. Cooper K, Gates P, Rae XL et al: Electrophysiology of cultured human lens epithelial cells. *J. Membr. Biol.* 117:285, 1990
6. Bassnett S, Stewart S, Duncan O et al: Efflux of chloride from rat lens: Influence of membrane potential and intracellular acidification. *Q J Exp. Physiol* 73:941, 1988
7. Matias RT, Rae XL, Ebiham L et al: The localization of transport properties in the frog lens. *Biophys J* 48:423, 1985
8. Jacob TIC, Bangham JA, Duncan O: Characterization of a cation channel on the apical surface of the frog lens *epithelium*. *Q J Exp Physiol* 70:403, 1985
9. Cooper KE, Tang JM, Rae XL et al: A cation channel in frog lens epithelium responsive to pressure and calcium. *J Membr Biol.* 93:259, 1986
10. Neville MC, Paterson CA, Hamilton PM: Evidence for two sodium pumps in the crystalline lens of the rabbit eye. *Exp Eye Res* 27:637, 1978
11. Alvarez U, Candia OA, Oñilone LR: Na⁺-K⁺ ATPase distribution in frog and bovine lenses. *Curr Eye Res* 4:143, 1985

12. Garner WH, Garner M, Spector A: H₂O₂-modification of Na, K-ATPase: Alterations in external Na⁺ and K⁺ simulation of K⁺ inflow. *Invest Ophthalmol* 27:103, 1986
13. Paterson CA, Delamere NA, Mawhorter L et al: Na, K-ATPase in simulated eye bank and cryoextracted rabbit lenses, and human eye bank lenses and cataracts. *Invest Ophthalmol Vis Sci* 24:1534, 1983
14. Gadsby DC, Bahinsid A, Nalato M: Voltage dependence of Na/K pumps current. *Curr Top Membr Transp* 34:269, 1989
15. Panerson JW: Effect of incubation medium electrolyte concentration on lens volume. *Ophthalmic Res*
16. Cooper K, Rae JL, Gates P: Membrane and junctions permeability of dissociated frog lens epithelial cells. *J Membr Biol*. 11:215, 1989
17. Harris L, Gehrsitz JB. Sodium pump in human lens. *Am. J. Ophthalmology* 1953. 36:39-44.
18. Kinsey VE, Reddy VN. Potassium pump in epithelial lens cells. *Invest Ophthalmol*. 1965; 4:104-109.
19. Rae XL, Kuszak IR: The electrical coupling of epithelium and fibers in the frog lens. *Exp Eye Res* 36:317, 1983
20. Miller TM, Oodenoough DA: Evidence for two physiologically distinct gap junctions expressed by the chick lens epithelial cell. *J Cell Biol*. 102:194, 1986
21. Paterson CA. Sodium and Potassium bump in lens epithelial cells. *Invest. Ophthalmology*. 12: 861. 1973.
22. Calvan A, Louis CF: Calcium regulation by lens plasma membrane vesicles. *Arch Biochem Biophys* 264:472, 1988
23. Zadunaisky JA, Ye JJ: Na/Cl and Ca/Na exchangers and NaK₂Cl cotransporter in cell membrane vesicles of lens and RPE studied with fluorescent probes. *International Congress of Eye Research Abstracts* 6:92, 1990
24. Duncan O: The site of the ion restricting membranes in the toad lens. *Exp Eye Res* 8:406, 1969
25. Candia OA, Bentley PJ, Milis CD et al: Asymmetrical distribution of the potential difference in the toad lens. *Nature* 227:852, 1970
26. Matias RT, Rae XL, Eisenberg RS: Electrical properties of structural components of the crystalline lens. *Biophys* 325:181, 1979
27. Matias RT, Rae XL: Steady state voltages in the frog lens. *Curr Eye Res* 4:421, 1985

28. Robinson R, Patterson JW: Localization of steady currents in the lens. *Curr Eye Res* 2:843, 1983
29. Wind BE, Walsh S, Fanerson 3W: Equatorial potassium currents in lenses. *Exp Eye Res* 46:117, 1988
30. Matias RT, Rae JL, Baldo GJ et al: Electrical properties of structural components of the lens. *Invest Ophthalmol Vis Sci* 30:87, 1990
31. Kuszak JR, Macsai MS, Bloom KJ et al: Cell-to-cell fusion of lens fiber cells *in situ*: Correlative light, scanning electron microscopic and freeze-fracture studies. *J Ultrastruc Res* 93:144, 1985
32. Matias RT: Steady-state voltages, ion fluxes, and volume regulation in syncytial tissues. *Biophys J* 48:435, 1985
33. Peracchia C, Girsch S 3: Permeability and gating of lens gap junction channels incorporated into liposomes. *Curr Eye Res* 4:431, 1985
34. Matias RT, Riquelme G, Rae JL: Measurement of intracellular pH in the frog lens and its effect on intercellular communication. *Biophys J* 53:52a, 1988
35. Bassnett S, Duncan O: The influence of pH on membrane conductance and intercellular resistance in the rat lens. *J Physiol* 398:507, 1988
36. Benedek GB, Chylack LT, Lidondi T. Quantitative detection of the molecular changes associated with early cataractogenesis in the living human lens using quasielastic light scattering. *Curr. Eye Res.* 1987; 6: 1421 -1425
37. Cooper K, Rae JL, Gates P: Membrane and junction permeability of dissociated frog lens epithelial cells. *J Membr Biol.* 11:215, 1989
38. Bernardini O, Peracchia C, Venosa RA: Healing-over in the crystalline lens. *J Physiol* 320:187, 1981
39. DiManio S: *In vivo* entry of glucose analogs into lens and cornea of the man. *Invest Ophthalmol Vis Sci* 25:160, 1984
40. Bassnett S: Intracellular pH regulation in the embryonic chicken lens epithelium. *J Physiol* 431:445, 1990

41. Lucas VA, Zigler 35 Jr.: Identification of the monkey lens glucose transporter by photoaffinity labeling with cytochalasin B. *Invest Ophthalmol Vis Sci* 29:630, 1988
42. Pennet R, Mattirews O, Neher E: Regulation of calcium influx by second messengers in the mast cells. *Nature* 334: 499, 1988
43. Hightower KR, Duncan O, Harrison SE: Intracellular calcium concentration and calcium transport in the rabbit lens. *Invest Ophthalmol Vis Sci* 26:1032, 1985
44. Zelenka PS: Changes in phosphatidylinositol metabolism during differentiation of lens epithelial cells into lens fiber cells in the embryonic chick. *J Biol Chem.* 255:1296, 1980
45. Zelenka PS: Changes in phosphatidylinositol metabolism during differentiation of lens epithelial cells into lens fiber cells in the embryonic chick. *J Biol Chem.* 255:1296, 1980
50. Vivekanandan S, Loa MF: Evidence for the presence of phosphoinositide cycle and involvement in cellular signal transduction in the rabbit lens. *Curr Eye Res* 8:101, 1989
51. Dunne MC. Model for co-ordination of corneal and crystalline lens power in Emmetropic human eyes. *Ophthalmic. Phys. Opt.* 1993. 13: 397-399.
52. Finchan E. The mechanism of accommodation. *Br. J. Ophthalmology* 1937. 8:1-9.
53. Fisher RF. The vitreous and the lens accommodation. *Trans. Ophthl. Soc. UK.* 1982. 102:318.
54. Glasser A, Kaufman PL. The mechanism of accommodation in primates. *Ophthalmology* 1999. 106: 863-872.
55. Kinoshita JH. Pathways of the glucose metabolism in lens. *Invest Ophthalmol.* 1965. 4:619-625.
56. Schachar R, Tello C, Cudmore D, Liebmann J, Black T. In vivo increase of the Human lens equatorial diameter during accommodation. Helmholtz theory. *Am. J. Phys.* 271: 40. 1966.
57. Schachar RA. A revolutionary variable focus lens. *Annals Ophthal.* 28 11-18. 1996.
58. Wilson RS. A new theory of human accommodation: cilio-zonular compression of The lens equator. *Trans. Am. Ophthal. Soc.* 1993; 91:401-416.
59. Dillon J. Photochemistry of the lens protein. *Lens Res.* 1983; 1:133-139

60. Dillon J, Garner MH, Roy D. The photolysis of the lens protein. Molecular Changes. *Exp. Eye. Res.* 1982; 34:651-658
61. Hightower K, McCready J. Comparative effect of UVA and UVB on cultured Rabbit lenses. *Photochem. Photobiol.* 1993 58(6): 827-830.
62. Horwitz J. The function of alpha-Crystallins. *Invest. Ophthalmol. Vis.Sci.* 1993. 34:10-16.
63. Gagna CE, Chen JH, Kuo HR, Lambert W. Binding properties of bovine ocular Lens z-crystallin to right-handed B-DNA, left-handed Z-DNA and single-stranded DNA. *Cell. Biol. Int.* 1998. 22:93-103.

BIBLIOGRAFIA.

FISIOLOGIA Y BIOQUIMICA DEL CRISTALINO. CIRUGÍA DE LA CATARATA.

30. Moses R, Hart W. Fisiología del ojo Adler. Cap. 10. Editorial panamericana. Buenos Aires. 1988.
31. Lo WK: Adherens junctions in the ocular lens of various species: ultrastructural analysis with an improved fixation. *Cell Tissue Res* 254:31, 1988
32. Rae XL, Dewey J, and Rue JS et al: maxi calcium activated potassium channel from chick lens epithelium. *Curr Eye Res* 9:847, 1990
33. Delamere NA, Duncan G: A comparison of ion concentrations, potentials and conductances of amphibian, bovine and cephalopod lenses. *J Physiol* 272:167, 1977
34. Cooper K, Gates P, Rae XL et al: Electrophysiology of cultured human lens epithelial cells. *J. Membr. Biol.* 117:285, 1990
35. Bassnett S, Stewart S, Duncan O et al: Efflux of chloride from rat lens: Influence of membrane potential and intracellular acidification. *Q J Exp. Physiol* 73:941, 1988
36. Matias RT, Rae XL, Ebihara L et al: The localization of transport properties in the frog lens. *Biophys J* 48:423, 1985
37. Jacob TIC, Bangham JA, Duncan O: Characterization of a cation channel on the apical surface of the frog lens *epithelium*. *Q J Exp Physiol* 70:403, 1985
38. Cooper KE, Tang JM, Rae XL et al: A cation channel in frog lens epithelium responsive to pressure and calcium. *J Membr Biol.* 93:259, 1986
39. Neville MC, Paterson CA, Hamilton PM: Evidence for two sodium pumps in the crystalline lens of the rabbit eye. *Exp Eye Res* 27:637, 1978

40. Alvarez U, Candia OA, Oñilone LR: Na⁺-K⁺ ATPase distribution in frog and bovine lenses. *Curt Eye Res* 4:143, 1985
41. Garner WH, Garner M, Spector A: H₂O₂-modification of Na, K-ATPase: Alterations in external Na⁺ and K⁺ simulation of K⁺ inflow. *Invest Ophthalmol* 27:103, 1986
42. Paterson CA, Delamere NA, Mawhorter L et al: Na, K-ATPase in simulated eye bank and cryoextracted rabbit lenses, and human eye bank lenses and cataracts. *Invest Ophthalmol Vis Sci* 24:1534, 1983
43. Gadsby DC, Bahinsid A, Nalato M: Voltage dependence of Na/K pumps current. *Curr Top Membr Transp* 34:269, 1989
44. Panerson JW: Effect of incubation medium electrolyte concentration on lens volume. *Ophthalmic Res*
45. Cooper K, Rae JL, Gates P: Membrane and junctions permeability of dissociated frog lens epithelial cells. *J Membr Biol.* 11:215, 1989
46. Harris L, Gehrsitz JB. Sodium pump in human lens. *Am. J. Ophthalmology* 1953. 36:39-44.
47. Kinsey VE, Reddy VN. Potassium pump in epithelial lens cells. *Invest Ophthalmol.* 1965; 4:104-109.
48. Rae XL, Kuszak IR: The electrical coupling of epithelium and fibers in the frog lens. *Exp Eye Res* 36:317, 1983
49. Miller TM, Oodenoough DA: Evidence for two physiologically distinct gap junctions expressed by the chick lens epithelial cell. *J Cell Biol.* 102:194, 1986
50. Paterson CA. Sodium and Potassium pump in lens epithelial cells. *Invest. Ophthalmology.* 12: 861. 1973.
51. Calvin A, Louis CF: Calcium regulation by lens plasma membrane vesicles. *Arch Biochem Biophys* 264:472, 1988
52. Zadunaisky JA, Ye JJ: Na/Cl and Ca/Na exchangers and NaK₂CL cotransporter in cell membrane vesicles of lens and RPE studied with fluorescent probes. *International Congress of Eye Research Abstracts* 6:92, 1990
53. Duncan O: The site of the ion restricting membranes in the toad lens. *Exp Eye Res* 8:406, 1969
54. Candia OA, Bentley PJ, Milis CD et al: Asymmetrical distribution of the potential difference in the toad lens. *Nature* 227:852, 1970

55. Matias RT, Rae XL, Eisenberg RS: Electrical properties of structural components of the crystalline lens. *Biophys* 325:181, 1979
56. Matias RT, Rae XL: Steady state voltages in the frog lens. *Curr Eye Res* 4:421, 1985
57. Robinson R, Patterson JW: Localization of steady currents in the lens. *Curr Eye Res* 2:843, 1983
58. Wind BE, Walsh S, Fanerson SW: Equatorial potassium currents in lenses. *Exp Eye Res* 46:117, 1988
30. Matias RT, Rae JL, Baldo GJ et al: Electrical properties of structural components of the lens. *Invest Ophthalmol Vis Sci* 30:87, 1990
31. Kuszak JR, Macsai MS, Bloom KJ et al: Cell-to-cell fusion of lens fiber cells *in situ*: Correlative light, scanning electron microscopic and freeze-fracture studies. *J Ultrastruct Res* 93:144, 1985
32. Matias RT: Steady-state voltages, ion fluxes, and volume regulation in syncytial tissues. *Biophys J* 48:435, 1985
33. Peracchia C, Girsch S 3: Permeability and gating of lens gap junction channels incorporated into liposomes. *Curr Eye Res* 4:431, 1985
34. Matias RT, Riquelme G, Rae JL: Measurement of intracellular pH in the frog lens and its effect on intercellular communication. *Biophys J* 53:52a, 1988
35. Bassnett S, Duncan O: The influence of pH on membrane conductance and intercellular resistance in the rat lens. *J Physiol* 398:507, 1988
36. Benedek GB, Chylack LT, Lidondi T. Quantitative detection of the molecular changes associated with early cataractogenesis in the living human lens using quasielastic light scattering. *Curr. Eye Res.* 1987; 6: 1421 -1425
37. Cooper K, Rae JL, Gates P: Membrane and junction permeability of dissociated frog lens epithelial cells. *J Membr Biol.* 11:215, 1989
38. Bernardini O, Peracchia C, Venosa RA: Healing-over in the crystalline lens. *J Physiol* 320:187, 1981
39. DiManio S: *In vivo* entry of glucose analogs into lens and cornea of the man. *Invest Ophthalmol Vis Sci* 25:160, 1984

40. Bassnett 5: Intracellular pH regulation in the embryonic chicken lens epithelium. *J Physiol* 431:445, 1990
41. Lucas VA, Zigler 35 Jr.: Identification of the monkey lens glucose transporter by photoaffinity labeling with cytochalasin B. *Invest Ophthalmol Vis Sci* 29:630, 1988
42. Pennet R, Mattirews O, Neher E: Regulation of calcium influx by second messengers in the mast cells. *Nature* 334: 499, 1988
43. Hightower KR, Duncan O, Harrison SE: Intracellular calcium concentration and calcium transport in the rabbit lens. *Invest Ophthalmol Vis Sci* 26:1032, 1985
44. Zelenka PS: Changes in phosphatidylinositol metabolism during differentiation of lens epithelial cells into lens fiber cells in the embryonic chick. *J Biol Chem.* 255:1296, 1980
45. Zelenka PS: Changes in phosphatidylinositol metabolism during differentiation of lens epithelial cells into lens fiber cells in the embryonic chick. *J Biol Chem.* 255:1296, 1980
50. Vivekanandan S, Loa MF: Evidence for the presence of phosphoinositide cycle and involvement in cellular signal transduction in the rabbit lens. *Curr Eye Res* 8:101, 1989
64. Dunne MC. Model for co-ordination of corneal and crystalline lens power in Emmetropic human eyes. *Ophthalmic. Phys. Opt.* 1993. 13: 397-399.
65. Finchan E. The mechanism of accommodation. *Br. J. Ophthalmology* 1937. 8:1-9.
66. Fisher RF. The vitreous and the lens accommodation. *Trans. Ophthl. Soc. UK.* 1982. 102:318.
67. Glasser A, Kaufman PL. The mechanism of accommodation in primates. *Ophthalmology* 1999. 106: 863-872.
68. Kinoshita JH. Pathways of the glucose metabolism in lens. *Invest Ophthalmol.* 1965. 4:619-625.
69. Schachar R, Tello C, Cudmore D, Liebmann J, Black T. In vivo increase of the Human lens equatorial diameter during accommodation. Helmotz theory. *Am. J. Phys.* 271: 40. 1966.
70. Schachar RA. A revolutionary variable focus lens. *Annals Ophthal.* 28 11-18. 1996.
71. Wilson RS. A new theory of human accommodation: cilio-zonular compression of

- The lens equator. *Trans. Am. Ophthal. Soc.* 1993; 91:401-416.
72. Dillon J. Photochemistry of the lens protein. *Lens Res.* 1983; 1:133-139
73. Dillon J, Garner MH, Roy D. The photolysis of the lens protein. *Molecular Changes. Exp. Eye. Res.* 1982; 34:651-658
74. Hightower K, McCready J. Comparative effect of UVA and UVB on cultured Rabbit lenses. *Photochem. Photobiol.* 1993 58(6): 827-830.
75. Horwitz J. The function of alpha-Crystallins. *Invest. Ophthalmol. Vis.Sci.* 1993. 34:10-16.
76. Gagna CE, Chen JH, Kuo HR, Lambert W. Binding properties of bovine ocular Lens z-crystallin to right-handed B-DNA, left-handed Z-DNA and single-stranded DNA. *Cell. Biol. Int.* 1998. 22:93-103.

BIBLIOGRAFIA

OPACIDAD DE LA CÁPSULA POSTERIOR DEL CRISTALINO

1. -Ambache N, Brummer HC. A simple chemical procedure for distinguishing E from F prostaglandin with application to tissue extracts. *Br. J. Pharmacology*. 1968; 33:162-168.
2. -Andlhey UP, Herbert JS, Morrison AR. Modulation of the lens epithelial cell proliferation by enhances prostaglandin synthesis after UVB exposure. *Invest Ophthalmol. Vis.Sci*. 1994; 35:374-381.
3. -Andlhey UP, Rhim JS, Chylack LT. Propagation and immortalization of human lens epithelial cells in culture. *Invest Ophthalmol. Vis. Sic*. 1994; 35: 3094-3102
4. -Apple DJ, Solomon KD. Posterior capsule opacification. *Surv. Ophthalmology* 1992. 37: 73 - 116.
5. -Aron-Rosa D, Aron J-J, Griesemann M, Thyzel R: Use of the Neodymium YAG laser to open the posterior capsule after lens implant surgery a preliminary report. *Am Intraocular implants Soc*. 1980. 6:352- 354.
6. -Arora J, Lysz TW, Zelenka PS. A role for 12(s)-HETE in the response of human lens epithelial cells to epidermal grows factor and insulin. *Invest. Ophthalmol. Vis.Sci*. 1996; 37:1411-1418.
7. -Auffarth G, McCabe C, Tetz M, Apple D: Clinicopathological findings in human autopsy eyes with an Anis circular lens. *J. Cataract and refractive surgery* 1996, 22: 1471- 1475.
8. -Auffarth G, Nimsgern C, Tetz MR. Erhöhte Nachstarrate und Besonderheiten der Nd.YAG laser kapsulotomie bei retinitis pigmentosa. *Ophthalmologe* 1997. 94: 791-795.
9. -Badr IA, Hussain HM, Jabak M, Wagoner MD. Extracapsular cataract extraction with or without posterior chamber intraocular lenses in eyes with cataract and high myopia. *Ophthalmology* 1995. 102: 1139-1143.
10. -Bartels SP. Sites of breakdown of the blood-aqueous barrier after paracentesis on rhesus monkey eye. *Invest. Ophthalmol. Vis.Sci*. 1979; 18:1050-1053.
11. -Bhattacharjee P, Hammond B. Inhibition of increased permeability of blood-aqueous barrier by non-steroidal anti-inflammatory compounds as demonstrated by fluorescein angiography. *Exp. Eye Res*. 1975; 21:499-503.
12. -Behar-Cohen FF, David T, Buechler Y. Cytotoxic effects of FGF2-saporin on bovine epithelial cells in vitro. *Invest. Ophthalmol. Vis.Sci*. 1995; 36:2425-2433.

13. Behar-Cohen FF, David T, D'Hermis F. In vivo inhibition of the lens regrowth by fibroblast growth factor 2-saporin. *Invest. Ophthalmol. Vis.Sci.* 1995; 63:2434-2448.
14. -Bermach G, Mayer U, Naumann GOH. Human lens epithelial cells in tissue culture. *Exp. Eye. Res.* 1991. 52:113-119.
15. -Bill A. The albumin exchange in the rabbit eye. *Act. Physiol. Scan.* 1964; 60:18-22.
16. -Bill A. Capillary permeability to an extravascular dynamics of mioglobin, albumin and gamma globulin in uvea. *Act Physicol. Scan.* 1968; 73:204-207.
17. -Bill A. The role of ciliar blood flow and ultrafiltration in aqueous humor formation. *Exp. Eye. Res.* 1973; 16:287.
18. -Bill A. Blood circulation of fluid dynamics in the eye. *Physiol. Res.* 1975; 55:383-385
19. -Brown N. Slit-image photography. *Trans. Ophthalmol. Soc. UK.* 1969. 89:397-408.
20. -Born CP, Ryan DK. Effect of intraocular lens optic design on posterior capsular opacification. *J. Cataract and refractive surg.* 1990. 16:188-192.
21. -Ceschi GP, Artraria LG. Clear lens extraction for correction of high grade myopia. *Klin. Monat. Augenhei.* 1998. 212:280-282.
22. -Dana MR, Chatzistefanou K, Schaumberg DA, Foster CS. Posterior capsule opacification after cataract surgery in patients with uveitis. *Ophthalmology* 1997. 104:1387-1393.
23. -De Natale R, Romero G, Fama F, Scullica L. Human transparency in high myopic subjects. *Ophthalmologica* 1992. 205:7.
24. -Dragomirescu V, Hockwin O, Koch HR, Sasaki K. Development of new equipment for rotating slit image photography according to Scheimpflug's principle. *Inter. T. Geron.* 1978. 13:1-13
25. Duke Elder S. System of ophthalmology Vol. XI. Disease of the lens and vitreous. London Henry Kimpton. 1969. 21 -42.
26. -Camarata PR, Spiro J. Epithelial lenses cells growth in vitro. *J. Cellular Physiology* 1982; 113:273.
27. -Clark D, Emery J, Munsell M, Keller P: Inhibition of posterior capsular opacification with a immunotoxin specific for lens epithelial cells: 24 months results of phase I/II study. *J. Cataract and refractive surgery* 1998. 24: 1614- 1620.
28. -Clark D, Munsell MF, Emery J. Mathematical models to predict the need for neodymium: YAG capsulotomy based on posterior capsule opacification rate. *J Cataract and refractive surgery* 1998. 24: 1621- 1625.
29. -Cobo LM, Ohsawa E, Chandler D. Pathogenesis of the capsular opacification after extracapsular cataract extraction. *Ophthalmology* 1984; 91: 857-863.
30. -Cortier E. Lysophosphatidyl choline and cataracts in uveitis. *Arch. Ophthalmology* 1976. 94; 11-19
31. -Cortina P, Gomez-Lechon M, Navaea A, Menezo J, Terencio M, Diaz-Liopis M: Diclofenac sodium and cyclosporin A inhibit human lens epithelial cell proliferation in culture. *Arch Clin Exp. Ophthalmology* 1997, 237: 180- 185.
32. -Cogan D, Donalson DD. Experimental radiation cataracts. Cataracts in rabbits following single x-ray exposure. *Arch. Ophthalmology* 1951; 45:508.

33. -Cunanan CM, Tarbaux MN, Knight PM. Surface properties of the intraocular lens material and their influence on in vitro cell adhesion. *J. Cataract and refractive surgery.* 1991; 17:767-773.
34. -Davidson MG, Harned J, Gimes AM. Transferrin in after-cataract and a survival factor for lens epithelium. *Exp. Eye Res.* 1998; 66:207-215.
35. -Ehlers N. Prostaglandin and non-prostaglandin mediated breakdown of the blood aqueous barrier. *Exp. Eye Res.* 1977; 25:483-487.
36. -Emery J. The Knife-needle operation for secondary cataract: abridgement and commentary. *Arch. Ophthalmology* 1996. 144: 1414-1415.
37. -Emery J. Capsular opacification after cataract surgery. *Cataract surgery and lens implantation. Current opinion in ophthalmology* 1998. 9; 1:60-65.
38. -Eshagian J, Streeten B. Human posterior subcapsular cataract. *Arch. Ophthalmology* 1076; 96:1653-1659.
39. -Fan DS, Lam DS, Li K. Retinal complications after cataract extraction in patients with high myopia. *Ophthalmology* 1999. 106: 688-691.
40. -Finchan E. The mechanisms of lens accommodation. *Br. J. Ophthalmology* 1937; 8:1-9.
41. -Fisher RF. The vitreous and lens accommodation. *Trans ophthalmology Soc. UK.* 1982; 102:318-324.
42. -Frezzotti R, Camporossi A. Pathogenesis of posterior capsular opacification. Part I. Epidemiological and clinic -statistical data. *J Cataract and refractive surgery.* 1990; 16:347-352.
43. -Frezzotti R, Camporossi A, Mastrangelo D. Pathogenesis of posterior capsular opacification. Part II. Histopathological and in vitro culture findings. *J Cataract and refractive surgery* 1990. 16: 353- 360.
44. -Friedman DS, Duncan DD, Muñoz B. Digital image captures and automated analysis of posterior capsule opacification. *Invest. Ophthalmology Vis.Sci.*1999. 40:1715-1726.
45. -Gimbel H. Posterior capsulorhexis with optic capture in pediatric cataract and intraocular lens surgery. *Ophthalmology* 1996. 103: 11.
46. -Goins KM, Ortiz JR, Fulcher SFA. Inhibitions of proliferating lens epithelium with antitransferrin receptor immunotoxin. *J. Cataract and refractive surgery.* 1994;23:260-266.
47. -Goldmann EE. Vitalfarbung am Zentrslonervensystem Abhandl. Köning Press. Akad Wis. (citado por) Hirsch M. The structure of tight junctions in the ciliary epithelium. *Exp. Eye Res.* 1985; 4: 493-501.
48. -Green WR, McDonnell PJ. Opacification of the posterior capsule. *Trans Ophthalmol. Soc. UK.* 1985. 104: 727-739.
49. -Greiner J, Chylack LT. Posterior subcapsular cataract: An ultrastructural study of the posterior migrating cells. *Arch. Ophthalmology.* 1980; 97:135-140.
50. -Hara T, Hara T, Sakanishi K, Yamada Y. Efficacy of equator rings in an experimental rabbit study. *Arch Ophthalmol.* 1995; 113:1060-1065.
51. -Harlan JB, Lee ET, Jensen PS, de-Juan E. Effect of humidity on posterior lens opacification during fluid-air exchange. *Arch. Ophthalmology* 1999. 117: 802-804.
52. -Harris ML, Smith GTH, Brown N. Inter and intraobserver reproducibility of the new Oxford CDD Scheimpflug camera. *Eye* 1991. 5:487-490.

53. -Haus C, Garland A. Mitomycin against posterior capsular opacification an experimental study in rabbits. *Br. J. Ophthalmology* 1996, 80: 1087 -1091.
54. -Hayashi K, Hayashi H, Nakao F, Hayashi F. in vivo quantitative measurement of posterior capsule opacification after extracapsular cataract surgery. *Am. J. Ophthalmology* 1998. 125:837-843.
55. -Hirsch M. Montcourrier P, Aguirre P, Keller N. The structure of tight junctions in the ciliary epithelium. *Exp. Eye Res.* 1985; 4: 493-501
56. -Ibaraki N, Lin L, Reddy V. Effects of growth factors on proliferation and differentiation in human lens epithelial cells in early subculture. *Invest. Ophthalmol. Vis.Sci.* 1995; 36:2304-2312.
57. -Ionides A, Dowler J, Hyking P. Posterior capsule opacification following diabetic extracapsular cataract extraction. *Eye* 1994; 8:535-537.
58. -Ismail M, Alio J, Moreno J: Prevention of secondary cataract by antimetabolic drugs: an experimental study. *Ophthalmic Res.* 1996. 28: 64-69.
59. -Jacob TJ, Humphry RC, Daviers EG, Thompson GM. Cytological factors relating to posterior capsule opacification following cataract surgery. *Br. J. Ophthalmology* 1987; 71: 659-663.
60. -Jimenez-Alfaro I, Miguelez S, Bueno JL, Puy P. Clear lens extraction and implantation of negative-power posterior intraocular lenses to correct extreme myopia. *J. Cataract and refractive surgery.* 1998 24:1310-1316.
61. Juetcher K. Histopathology of capsule fixed intracocular lens. In Emery JM. *Current concepts in cataract surgery.* St Louis. Mosby. 165 -172. 1978.
62. Juetcher K. Histopathology in pseudophakia. In Kwitko ML. Prager DL. *Pseudophakia current trends and concept.* Baltimore. Williams & Williams. 395 -408. 1880.
63. -Kanawati CA. Intraocular lens implantation in children in the West Bank and Gaza. *Eye* 1995. 9:783-793.
64. -Krause N, Raunio V. Proteins of the normal human aqueous humor. *Ophthalmologica* 1969. 159; 179-181.
65. Krause N, Raunio V. The proteins of the pathologic human aqueous humor. *Ophthalmologica* 1970 160; 280- 284.
66. -Kato K, Kurosaka D, Nagamoto T. Apoptotic cell death in rabbit lens after lens extraction. *Invest Ophthalmol. Vis.Sci.* 1997; 38:2322-2330.
67. -Knight-Nanan D, O'Keefe M, Bowell R. Outcome and complication of intraocular lenses in children with cataract. *J. Cataract and refractive surgery.* 1996. 22:730-736.
68. -Knorz MC, Soltau J, Seiberth V. Incidence of posterior capsule opacification in diabetic patients. *Metab. Pediatr. Sys. Ophthalmol.* 1991; 14:57-58.
69. -Kohnen T, Pena-Cuesta R, Koch D. Secondary cataract formation following pediatric intraocular lens implantation: 6-month result. *Ger. J. Ophthalmology* 1996. 5: 171- 175.
70. -Kohnen S, Brauweiler P. First result of cataract surgery and implantation of negative power intraocular lenses in high myopic eyes. *J. Cataract and refractive surgery.* 1996. 22:416-420.
71. -Krag S, Thim K, Corydon L. Strength of the lens capsule during hydroexpression of the nucleus. *J- Cataract and refractive surgery* 1993. 19:205-208.

72. -Krishna R, Meisler DM, Lowder CY, Estafanous M, Foster RE. Long-term follow-up of extracapsular cataract extraction and posterior chamber intraocular lens implantation in patients with uveitis. *Ophthalmology* 1998. 105: 1765-1769.
73. -Kurosaka D, Kato N, Nagamoto T, Negishi K. Growth factors influence contractility and alpha-smooth muscle actin expression in bovine lens epithelial cells. *Invest. Ophthalmol. Visc.Sci.* 1995; 36:1701-1708.
74. -Kurosaka D, Nagamoto T. Inhibitory effect of TGF-B2 in human aqueous humor in bovine lens epithelial cell proliferation. *Invest Ophthalmol. Vis.Sci.* 1994; 35:3408-3412.
75. -Lasa MS, Datiles MB, Magno MV, Mahurkar H. Scheimpflug photography and postcataract surgery capsule opacification. *Ophthalmic Surg.* 1995. 26:110-113.
76. -Li WC, Kuszak JR, Dunn K. Lens epithelial cell apoptosis appears to be a common cellular basis for noncongenital cataract development in human and animals.
77. -Liu CS, Wormstone I, Duncan G. A study of human lens cells growth in vitro; a model for posterior capsule opacification. *Invest. Ophthalmol. Vis.Sci.* 1996; 37:906-914.
78. -Liu J, Hales AM, Chamberlain C, McAvoy JW. Induction of cataract-like changes in rat epithelial explants by transforming growth factor α . *Invest. Ophthalmol. Vis.Sci.* 1994; 35:388-401.
79. Liu J, Chamberlain C, McAvoy JW. The effect of basic FGF and insulin-like growth factor on the regulation of cell proliferation and differentiation in rat lens epithelium. *Invest Ophthalmol. Vis.Sci.* 1993; 34:755.
80. -Lord BI, Potten CS, Cole R. Stem cells and tissue homeostasis. Cambridge University Press. London England. 1978.
81. -Lyle WA, Jin GJ. Phacoemulsification with intraocular lens implantation in high myopia. *J Cataract and refractive surgery.* 1996. 22:238-242.
82. -Malacaze F, Chollet P, Cavrois E, et al. Role of interleukin 6 in the inflammatory response after cataract surgery; an experimental and clinical study. *Arch Ophthalmol.* 1991; 109:1681-1683.
83. -Maltzman B, Haupt E, Notis C. Relationship between age at time of cataract extraction and time interval before capsulotomy for opacification. *Ophthalmic Surg.* 1989; 20:321-324.
84. -Malukiewicz G, Kaluzny J, Lesieweska H, Elikis I. Intraocular lens implantation in children and youth. *J. Ped. Ophthal. Strabismus* 1999. 36:129-133.
85. -Mamalis N, Phillips B, Kopp C, Crandall A, Orson R. Neodymium: YAG capsulotomy rates after phacoemulsification with silicone posterior chamber intraocular lens. *J. Cataract and refractive surgery.* 1996, 22: 1296- 1302.
86. -Mastropasqua L, Lobefalo L, Ciancaglini M, Ballone E, Gallenga P: Heparin eyedrops to prevent posterior capsule opacification. *J. Cataract and refractive surgery* 1996, 23: 440- 446.
87. -McDonnell PJ, Zarbin MA, Green WR. Posterior capsule opacification in pseudophakic eyes. *Ophthalmology* 1983. 90: 1548-1553.
88. -McDonnell PJ, Krauze W, Glaser BM. In vitro inhibitions of lens epithelial cell proliferation and migration. *Ophthalmic Surg.* 1998; 19:25-30.
89. -McDonnell PJ, Rowen SL, Glaser BM, Sato M. Posterior capsule opacification: an in vitro model. *Arch. Ophthalmology* 1985. 103:1378- 1381.
90. -McGahan MC, Harned J, Grimes AM. Transferrin secretion by lens epithelial cells in culture. *Exp. Eye Res.* 1995; 60:207-215.

91. -Milazzo S, Turut P, Artin B, Charlin J: Long term follow-up of three-piece, looped, silicone intraocular lenses. *J. Cataract and refractive surgery* 1996, 22: 1259- 1262.
92. -Moisseiev J, Bartov E, Schochat A. Long-term study of the prevalence of capsular opacification following extracapsular cataract extraction. *J Cataract and refractive surgery.* 1989; 15:531-533.
93. -Nagamoto T, Hara E, Kurosaka D. Lens epithelial cell proliferation in to the intraocular lens optic in vitro. *J. Cataract and refractive surgery.* 1996. 22; 847-851.
94. -Nagata T, Watanabe I. Adhesiveness of AcrySot to a collagen film. *J. Cataract and refractive surgery* 1998; 24:367-370.
95. -Nagata T, Watanabe I. Optic sharps edge or convexity: comparison of effect of posterior capsule opacification. *Jpn J. Ophthalmology* 1996, 40: 397 - 403.
96. -Nagatomo T. Bissen-Miyajima H. A ring to support the capsular bag after continuous curvilinear capsulorhexis. *J. Cataract and refractive surgery.* 1994; 20:417- 420.
97. -Nagatomo T. Hara E. Lens epithelial cell migration onto the posterior capsule in vitro. *J Cataract refractive surgery* 1996; 22: 841-846.
98. -Niesel P. Spaltlampen-Photographie mit der Haag-Stret-Spaltlampe 900. *Ophthalmologica* 1966. 151: 489-504 at. Kazuyuki Sasaki. *Cataract Epidemiology performed with Scheimpflug Documentation.* *Ophthalmic Res.* 1999. 31:75-85.
99. -Ninn- Pedersen K, Bauer B. Cataract patients in a defined Swedish population 1986-1990. Yag Laser capsulotomies in relation to preoperative and surgical conditions. *Acta Ophthal. Scand.* 1997. 75:551-557.
- 100.-Nishi O. Posterior capsule opacification. Part 1: Experimental investigations. *J Cataract and refractive surgery* 1999. 25:106- 117.
- 101.-Nishi O. Incidence of posterior capsular opacification in eyes with and without posterior chamber intraocular lens. *J Cataract and refractive surgery* 1986. 12: 519- 522.
- 102.-Nishi O, Nishi K, Akaishi T, Shirasawa E. Detection of cell adhesion molecules in lens epithelial cells of human cataracts. *Invest Ophthalmic. Vis.Sci.* 1997; 38:579-585.
- 103.-Nishi O, Nishi K, Fujiwara T. Effects of the cytokines on the proliferation of and collagen synthesis by human cataract lens epithelial cells. *Br. J. Ophthalmology.* 1996: 80:63-68.
- 104.-Nishi O, Nishi K, Fujiwara T, Shirasawa E. Effects of diclofenac sodium and indomethacin on proliferation and collagen synthesis of the lens epithelial cells in vitro. *J Cataract and refractive surgery* 1995; 21:574-578.
- 105.-Nishi O, Nishi K, Hikida M. Removal of lens epithelial cells by dispersion with enzymatic treatment followed by aspiration. *Ophthalmic Surg.* 1991; 22:444-450.
- 106.-Nishi O, Nishi K, Imanishi M. Synthesis of interleukin-1 and prostaglandin E2 by lens epithelial cells of human cataracts. *British J. Ophthalmology* 1992. 76: 338-341.
- 107.-Nishi O, Nishi K, Mano C. Inhibition of migrating lens epithelial cells by blocking the adhesion molecule integrin: a preliminary report. *J Cataract and refractive surgery* 1997; 23: 860- 865.
- 108.-Nishi O, Nishi K, Menapace R. Capsule-bending ring for prevention of capsular opacification: a preliminary report. *Ophthalmic Surg. Lasers* 1998; 29:749-753.

- 109.-Nishi O, Nishi K, Morita T, et al. Effect of intraocular sustained release of indomethacin on postoperative inflammation and posterior capsule opacification. *J Cataract and refractive surgery* 1996, 22:806-810.
- 110.-Nishi O, Nishi K, Ohmoto Y. Synthesis of interleukin-1, interleukin-6 and basic fibroblasts growth factor by human cataract lens epithelial cells. *J. Cataract and refractive surgery* 1996; 22:852-858.
- 111.-Nishi O, Nishi K, Sakanishi K. Inhibitions of migrating lens epithelial cells at the capsular bend created by the rectangular optic edge for a posterior chamber intraocular lens. *Ophthalmic Surg. Lasers* 1998; 29:587-594.
- 112.-Nishi O, Nishi K, Yamada Y, Mizumoto Y. Effect of indomethacin-coated posterior chambers intraocular lens on postoperative inflammation and posterior capsule opacification. *J Cataract refractive surgery* 1996; 22:806-810.
- 113.-Ohnishi Y, Takana M. Effects of the pilocarpine and paracentesis on occluding junctions between the non-pigmented ciliary epithelial cells. *Exp. Eye Res.* 1981; 32:635-640.
- 114.Olivares M. Estudio del efecto antiproliferativo de diferentes drogas sobre la opacificación de la cápsula posterior del cristalino. (Tesis Doctoral) Salamanca 1992.
- 115.-Oshida T, Nagata T, Ishii Y. Adhesion of the lens capsules cell to intraocular lenses of P.M.M.C., silicone and acrylic foldable material. *British J. Ophthalmology* 1998. 82:549- 553.
- 116.-Pearson PA, Solomon KD, Woodford S. Inhibition of posterior capsule opacification using sustained delivery 5-fluoracil. *ARVO. Abstract 638. Invest. Ophthalmol. Vis.Sci.* 1991; 32:797.
- 117.-Percibal SP, Setty S. Analysis of the need for secondary capsulotomy during a five-year follow-up. *J Cataract and refractive Surgery.* 1988; 14:379-382.
- 118.-Philpson BT, Fagerholm P. Human subcapsular cataract. Distribution of protein in relation to opacification. *Exp. Eye Res.* 1973; 16:29-34.
- 119.-Power W, Neylan D, Collum L. Growth characteristics of human lens epithelial cells in culture; effect of media and donor age. *Doc Ophthalmol.* 1993. 84: 365-372.
- 120.-Power W, Neylan D, Collum L. Daunomycin as an inhibitor of human lens epithelial cells proliferation in culture. *J Cataract and refractive surgery* 1994; 20:287-290.
- 121.-Power W, Neylan D, Collum L. Adherence of human lens epithelial cells to conventional PMMA, heparin surfaces modified, and poly-hema lenses. *J Cataract and refractive surgery* 1994; 20: 440-445.
- 122.-Potsch D, Losch-Potsch C. Four year follow-up of the Memorylens. *J. Cataract and refractive surgery* 1996, 22: 1336- 1341.
- 123.-Ram J, Jain S, Pandav SS, Gupta A, Mangat GS. Postoperative complication of intraocular lens implantation in patients with Fuchs' heterochromic cyclitis. *J. Cataract and refractive Surgery.* 1995. 21:548-551.
- 124.-Ravalico G, Tognetto D, Palomba M, Bussatto P, Baccara F. Capsulorhexis size and posterior capsule opacification. *J. Cataract and refractive surgery* 1996. 22:98- 103.
- 125.-Raviola G. The structural basis of the blood-ocular barriers. *Exp. Eye. Res.* 1977; 25: 27-63.
- 126.-Reddy VN, Lin R, Arita T. Crystallins and their synthesis in human lens epithelial cells in tissue culture. *Exp. Eye Res.* 1988. 47: 465- 478.
- 127.-Robison WG, Houlter N, Kinoshita J. The role of lens epithelium in sugar cataract formation. *Exp. Eye res.* 1990; 50:641-646.

- 128.-Ruiz JM, Medrano M, Alió JL. Inhibition of posterior capsule opacification by 5-fluoracil in rabbits. *Ophthalmic Res.* 1990; 22:201-208.
- 129.-Saika S, Ohmi S, Ooshima A, Kimura M, Ohkawa K, Okada T, Tanaka S, Ohnishi Y, Yamanaka A. Collagen synthesis in lens epithelial cells on capsules containing intraocular lens implants in rabbits: immunolocalization of prolyl- 4-hydroxylase. *Arch. Clin. Exp. Ophthalmology* 1996, 234: 755-760.
- 130.-Saika S, Ohmi S, Kanagawa R, Tanaka S, Ohnishi Y, Ooshima A, Yamanaka A. Lens epithelial cell outgrowth and matrix formation on intraocular lenses in rabbit eyes. *J. Cataract and refractive surgery.* 1996. 22:835-840.
- 131.-Samuels B. Proliferation of the epithelium of the lens. *Am. J. Ophthalmology* 1947; 30:1-11.
- 132.-Santos BA, DelMonte MA, Pastora R, O'Donnel FE. Lens epithelial inhibition by PMMA optics: implications for lens design. *J Cataract and refractive surgery* 1986. 12:23- 26.
- 133.Santos BA, DelMonte MA, Pastora R, O'Donnel FE. Comparative study of the effects of optic design on lens epithelium in vitro. *J. Cataract and refractive surgery.* 1987; 127-130.
- 134.-Sasaki K. A new approach to crystalline lens documentation. *J. Ophthal. Photogra.* 1986. 9:112-115.
- 135.-Sasaki K, Sakamoto Y, Shibata T, Emori Y. Multiple-purpose camera: A new anterior segment analysis system. *Ophthalmic Res.* 1990 22 (suppl): 3-8.
- 136.-Sasaki K. Cataract Epidemiology performed with Scheimpflug Documentation. *Ophthalmic Res.* 1999. 31:75-85.
- 137.-Sawusch MR, McDonnell PJ. Posterior capsule opacification. *Curr. Opinion Ophthal.* 1990; 1: 28-33.
- 138.-Saxby L, Rosen E, Boulton M. Lens epithelial cell proliferation, migration, and metaplasia following capsulorhexis. *Br. J. Ophthalmology* 1998; 82:945-952.
- 139.-Shammas HJ, Milkie CF. Mature cataract in eyes with unilateral axial myopia. *J. Cataract and refractive surgery.* 1989. 15:308.
- 140.-Sourdille P. Overview of posterior capsule opacification. *J. Cataract and refractive surgery.* 1997. 23:1431-1432.
- 141.-Sperduto B, Hiller R. The prevalence of nuclear, cortical, and posterior subcapsular lens opacities in a general population sample. *Ophthalmology* 1984; 91: 815-821.
- 142.-Steinert RF, Puliafito CA, Kumar S. Cystoid macular edema, retinal detachment, and glaucoma after Nd: YAG laser posterior capsulotomy. *Am. J. Ophthalmology.* 1991; 112:373-380.
- 143.-Sterlig S, Wood TO. Effect of intraocular lens convexity on posterior capsule opacification. *J. Cataract and refractive surgery.* 1986; 12:655-657.
- 144.-Streeten BW, Eshagian J. Human posterior subcapsular cataract. *Arch. Ophthalmology* 1976; 96:1653-1659.
- 145.-Sundelin K, Sjöstrand J. Posterior capsule opacification 5 years after extracapsular cataract extraction. *J Cataract and refractive surgery.* 1999; 25: 246-250.
- 146.-Tarsio J, Kelleher P, Tarsio M, Emery J, Llam D: Inhibition of cell proliferation on lens capsules by 4197X-sicin An Immunoconjugate. *J. Cataract and refractive surgery* 1997. 23: 260- 266.
- 147.-Tassignon M. De Groot V, Smets R, Tawab B, Vervecken F. Secondary closure of posterior continuous curvilinear capsulorhexis. *J Cataract and refractive surgery* 1996, 22: 1200-1205.

- 148.-Tassignon M, De Groot V, Vervecken F, Van tenten Y. Secondary closure of posterior continuous curvilinear capsulorhexis in normal eyes and eyes at risk for postoperative inflammation. *J. Cataract and refractive surgery*. 1998. 24:1333-1338.
- 149.-Tassin J, Malise E, Courtois Y. Human lens cells have an in vivo proliferate capacity inversely proportional to the donor age. *Exp. Cell. Res* 1979. 123: 388- 392.
- 150.-Terry AC, Stark W, Maumenee AE, Fagadau W. Neodymium-YAG laser for posterior capsulotomy. *Am. J. Ophthalmology* 1983. 96:716- 720
- 151.-Tetz M, Ries M, Lucas C, Stricker H, Volcher H; Inhibition of posterior capsule opacification by an intraocular-lens-bound sustained drug delivery system: an experimental study and literature review. *Cataract and refractive surgery* 1996, 22: 1070- 1078.
- 152.-Tetz M, Auffarth GU, Speker M. Photographic images analysis system of posterior capsule opacification. *J. Cataract and refractive surgery* 1997. 23:1515-1520.
- 153.-Tetz M, O'Morchoe DJC, Gwin TD. Posterior capsular opacification and intraocular lens decentration. Experimental findings on a prototype circular intraocular lens design. *J. Cataract and refractive surgery*. 1988. 14:614-623.
- 154.-Tetz M, Nimsgern C. Posterior capsule opacification. Clinical findings. *J. Cataract and refractive surgery*. 1999. 25:1662-1674.
- 155.-Ursell PG, Spalton DJ, Pande MV. Relationship between intraocular lens biomaterial and posterior capsule opacification. *J. Cataract and refractive surgery*. 1998; 24:352-360.
- 156.-Van Cawenberge F, Rakic J-M, Galand A: Complicated posterior capsulorhexis: aetiology, management, and outcome. *Br. J. Ophthalmology* 1997. 81: 195-198.
- 157.-Varma SD, Schocker SS, Richard RD. Implications of aldose reductase in cataract in human diabetes. *Invest. Ophthalmology Vis.Sci*. 1979; 18:237-341.
- 158.-Wegener A, Laser H, Hockwin O. Reproducibility studies with the Zeiss SLC system and animal cataract model. *Ophthalmic Res*. 1990. 22(suppl): 18-23.
- 159.-Westling AK, Calissendorff BM. Factors influencing the formation of posterior capsular opacities after extracapsular cataract extraction with posterior chamber lens implant. *Act Ophthalmol*. 1991; 69:315-320.
- 160.-Wilhemus KR, Emery JM. Posterior capsule opacification following phacoemulsification. *Ophthalmic Surg*. 1980; 11:264-267.
- 161.-Wormstone I, Lui CSC, Rakic J. Human lens epithelial cell proliferation in a protein-free medium. *Invest. Ophthalmol. Vis.Sci*. 1997; 38:396-404.
- 162.-Yamada K, Nagamoto T, Yozawa H. Effect of intraocular lens design on posterior capsule opacification after continuous curvilinear capsulorhexis. *J. Cataract and refractive surgery* 1995; 21:697-700.
- 163.Zaczek A, Zetterström C. Cataract surgery and pupil size in-patients with diabetes mellitus. *Acta Ophthalmol. Scand*. 1997; 75:429-432.
- 164.-Zaczek A, Zetterström C. Posterior capsule opacification after phacoemulsification in-patients with diabetes mellitus. *J Cataract and refractive surgery* 1999; 25:233- 237.
- 165.Zaczek A, Zetterström C. Aqueous flare intensity after phacoemulsification in-patients with diabetes mellitus. *J Cataract and refractive surgery*. 1998; 24:10099-1104.

166. -Zheng D, Fu SC, Lysz TW, Leung CCK. Immunocytochemical localization of cyclooxygenase in the rat lens. *Invest. Ophthalmol. Vis.Sci.* 1992; 33:178.183.
164. Zimmerman LE. *Ophthalmic pathology and atlas and textbook.* 2nd edition. Philadelphia WB Saunders 1962; 657.
165. Roy FH. After cataract: clinical and pathological evaluation. *Ann Ophthal.* 1971. 3: 1364 -1372.
166. Hiles DA, Johnson BL. The role of the crystalline lens epithelium in post- pseudophakos membrane formation. *Am. Intraocular, Imp. Soc.* 1980. 6: 141 -147.
167. McDonnell PJ. Green R, Maumenee AE. Pathology of intraocular lens in 33 eyes examined postmortem. *Ophthalmology* 1983; 90: 386 -403.
168. Weiblinger R. Review of the clinical literature on the use of the Nd: Yag Laser for the posterior capsulotomy. *J Cataract and Ref. Surgery* 1986: 12: 162 -169.
169. Stark W, Bruner W, Holladay J, Murray G. Neodymium: Yag Laser. A FDA report. *Ophthalmology* 1985. 92: 909 -912.
170. Jaffe N, Hrowitz J. Lens and cataract. *Textbook of ophthalmology.* Grower Medical Publisher. New York. 1992.
171. Mikulicich A. Young R. Cell proliferation and displacement in the lens epithelium of young rats injected with tritiated thymidine. *Invest. Ophthal. Vis. Sci.* 1963. 2; 344 -54.
172. Scullica L, Grimes P, McElvain N. DNA synthesis in the rat lens epithelium after irradiation. *Arch. Ophthal.* 1962. 68: 792 - 800.
173. Dahm R, Gribbon C, Quinlan RA, Prescott AR. Lens cell organelle loss during differentiation versus stress-induced apoptotic changes. *Bioquim. Soc. Trans.* 1997. 25:584.
174. Arruti C, Courtois Y, Morphological changes and growth stimulation of bovine epithelial cells by a retinal extract in vitro. *Exp. Cell Res.* 1978. 117: 283 - 292.
175. Yokohama T. Interleucin 1 B, in the aqueous humor in aphakic and pseudophakic eyes of rabbit. *Act. Soc. Ophthal.* 1992. 96: 67 -73.
176. Schmitt -Gräff A, Paul H, Sphar R. Aparence of alpha-smooth muscle actin in human eye lensof anterior capsular cataract and in cultured bovine forming cells. *Differentaiton* 1990; 102 :115 - 122.
177. Podos S, Yanoff M. *Glaucoma.* Texbook of ophthalmology. Grower Medical Publisher. NY. 1997
178. Sommerauer P, Haas G, Schumman G. Ergebnisse und komplikationen nach hinterkammerlinsenimplantation bei pseudoexfoliationssyndrom.. *Deutschen G. Intraokularlinsen Implantacion.* Spriniger editorial. Berlin 1990. 278 -281.
179. Shields B. *Texbook of glaucoma.* Williams & Wilkings . Baltimore 1987. Pp. 1 - 56.
180. Gunning FP, Greve EL. Intercapsular cataract extracction with a implantation of the Galand disclens. E retrospective analysis in patients with and without glaucoma. *Ophthal. Surgery.* 1991. 22;9: 531 -538.
181. Galand A, Bonhomme M, Collee M. Direct measurement of the capsular bag. *J. Am. Intraocular Implant.* 1984. 10: 475 - 476.

182. Bath P, Fankhauser F. Long term results of Nd:YAG Laser damage in PMMA and silicone intraocular lens. *Invest. Ophthalm. Vis. Sci.* 1986. 27:795-798.