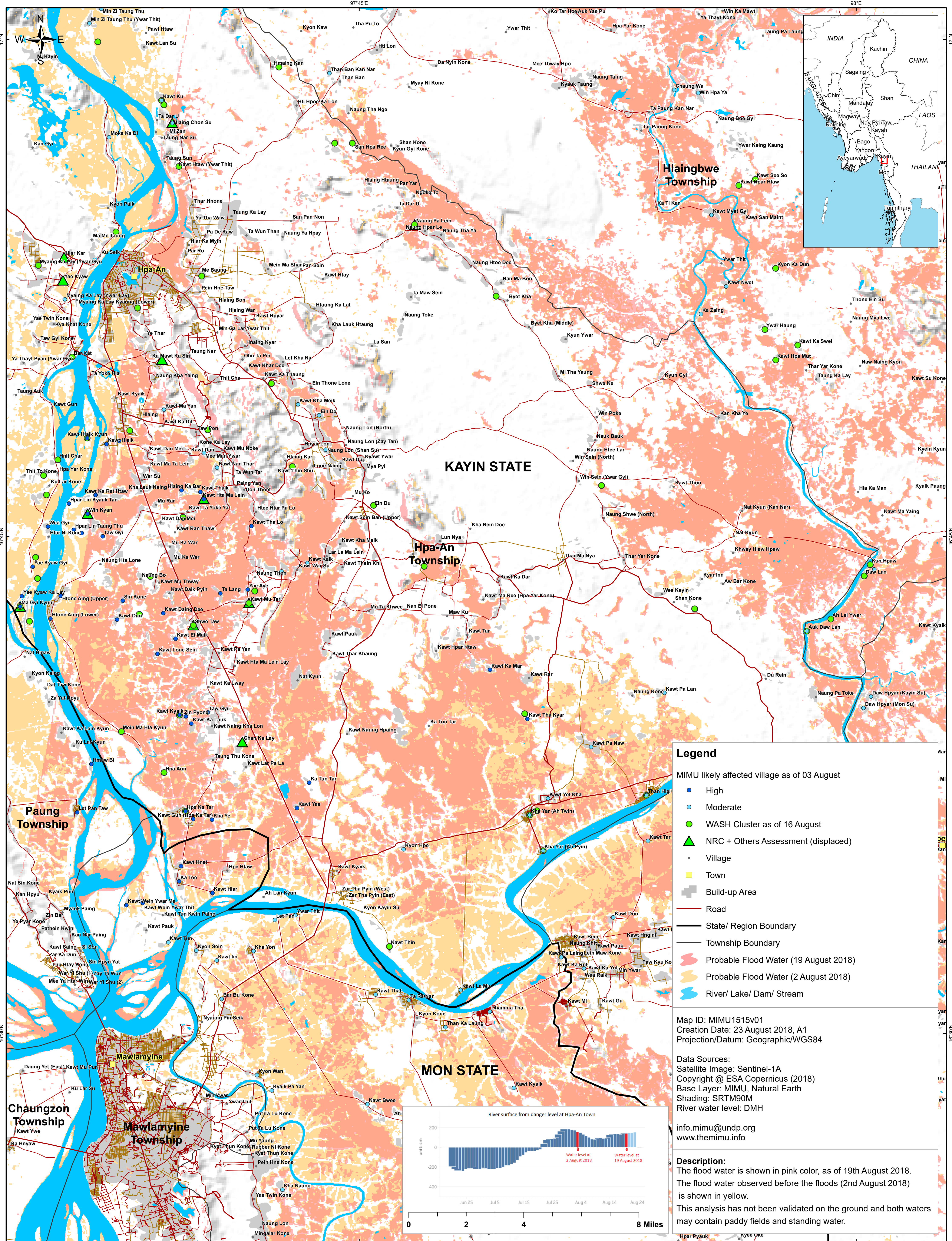


Flood Inundated Area around Hpa-An and Mawlamyine Townships

(as of 19 August 2018)



Legend

- MIMU likely affected village as of 03 August
 - High
 - Moderate
- WASH Cluster as of 16 August
- ▲ NRC + Others Assessment (displaced)
- Village
- Town
- Build-up Area
- Road
- State/ Region Boundary
- Township Boundary
- Probable Flood Water (19 August 2018)
- Probable Flood Water (2 August 2018)
- River/ Lake/ Dam/ Stream

Map ID: MIMU1515v01
 Creation Date: 23 August 2018, A1
 Projection/Datum: Geographic/WGS84

Data Sources:
 Satellite Image: Sentinel-1A
 Copyright @ ESA Copernicus (2018)
 Base Layer: MIMU, Natural Earth
 Shading: SRTM90M
 River water level: DMH

info.mimu@undp.org
 www.themimu.info

Description:
 The flood water is shown in pink color, as of 19th August 2018. The flood water observed before the floods (2nd August 2018) is shown in yellow. This analysis has not been validated on the ground and both waters may contain paddy fields and standing water.

