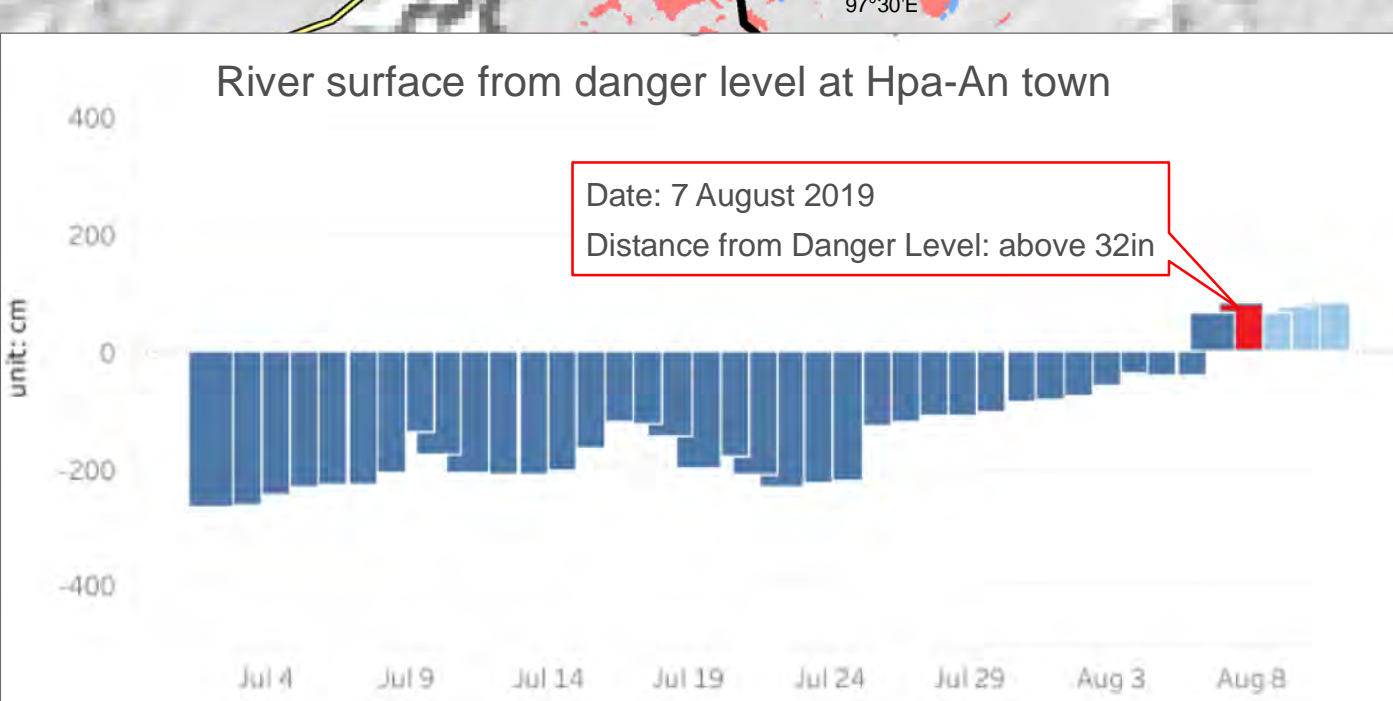
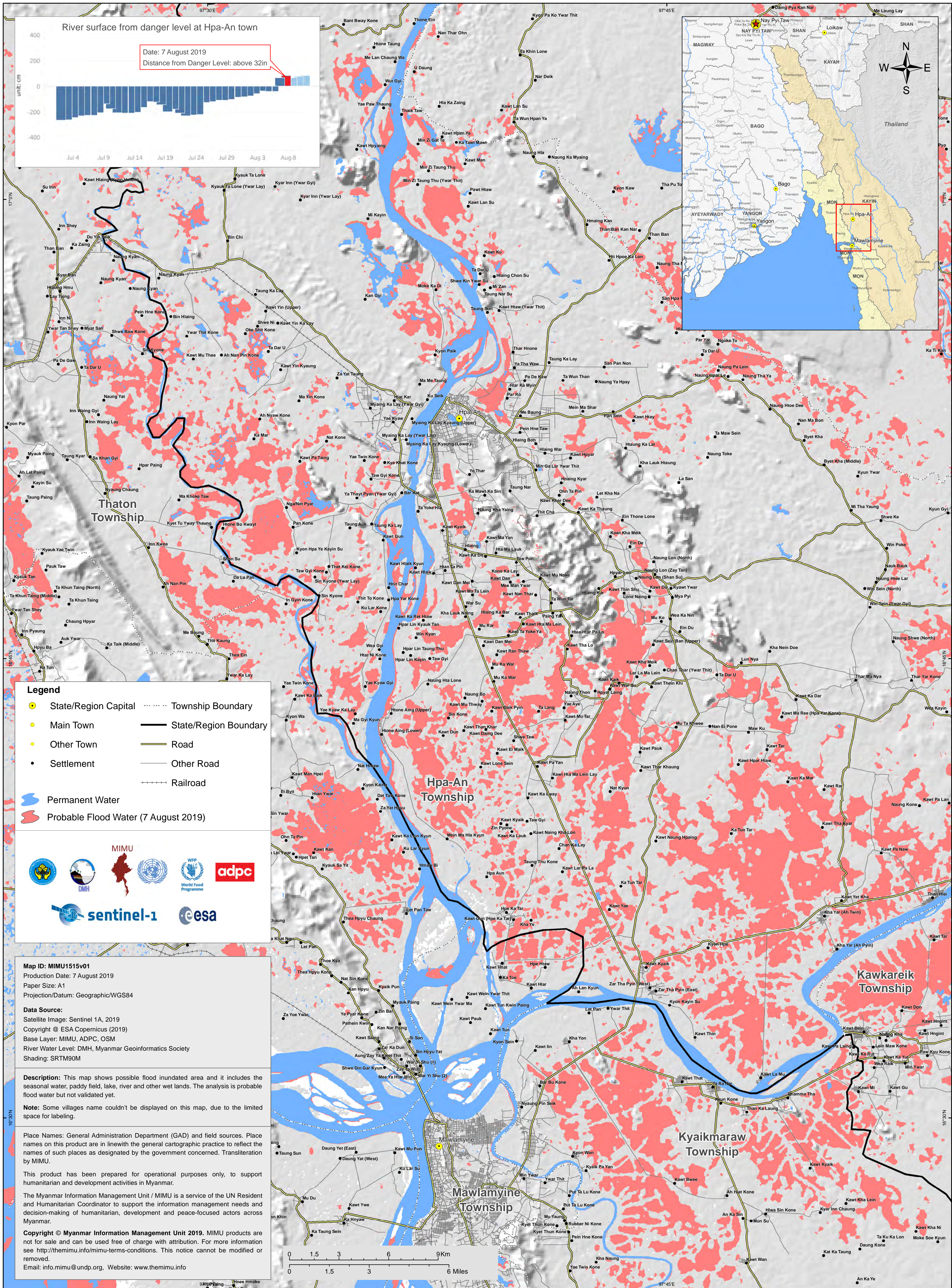


# Probable Flood Inundated Area in Hpa-An and Mawlamyine Township as of 7 August 2019, 6:00 AM



**Legend**

- State/Region Capital
- Main Town
- Other Town
- Settlement
- Permanent Water
- Probable Flood Water (7 August 2019)
- Township Boundary
- State/Region Boundary
- Road
- Other Road
- Railroad

MIMU

DMH

WFP World Food Programme

adpc

sentinel-1

cesat

**Map ID:** MIMU1515v01  
**Production Date:** 7 August 2019  
**Paper Size:** A1  
**Projection/Datum:** Geographic/WGS84

**Data Source:**  
 Satellite Image: Sentinel 1A, 2019  
 Copyright © ESA Copernicus (2019)  
 Base Layer: MIMU, ADPC, OSM  
 River Water Level: DMH, Myanmar Geoinformatics Society  
 Shading: SRTM90M

**Description:** This map shows possible flood inundated area and it includes the seasonal water, paddy field, lake, river and other wet lands. The analysis is probable flood water but not validated yet.

**Note:** Some villages name couldn't be displayed on this map, due to the limited space for labeling.

**Place Names:** General Administration Department (GAD) and field sources. Place names on this product are in line with the general cartographic practice to reflect the names of such places as designated by the government concerned. Transliteration by MIMU.

This product has been prepared for operational purposes only, to support humanitarian and development activities in Myanmar.

The Myanmar Information Management Unit / MIMU is a service of the UN Resident and Humanitarian Coordinator to support the information management needs and decision-making of humanitarian, development and peace-focused actors across Myanmar.

**Copyright © Myanmar Information Management Unit 2019.** MIMU products are not for sale and can be used free of charge with attribution. For more information see <http://themimu.info/mimu-terms-conditions>. This notice cannot be modified or removed.  
 Email: [info.mimu@undp.org](mailto:info.mimu@undp.org). Website: [www.themimu.info](http://www.themimu.info)