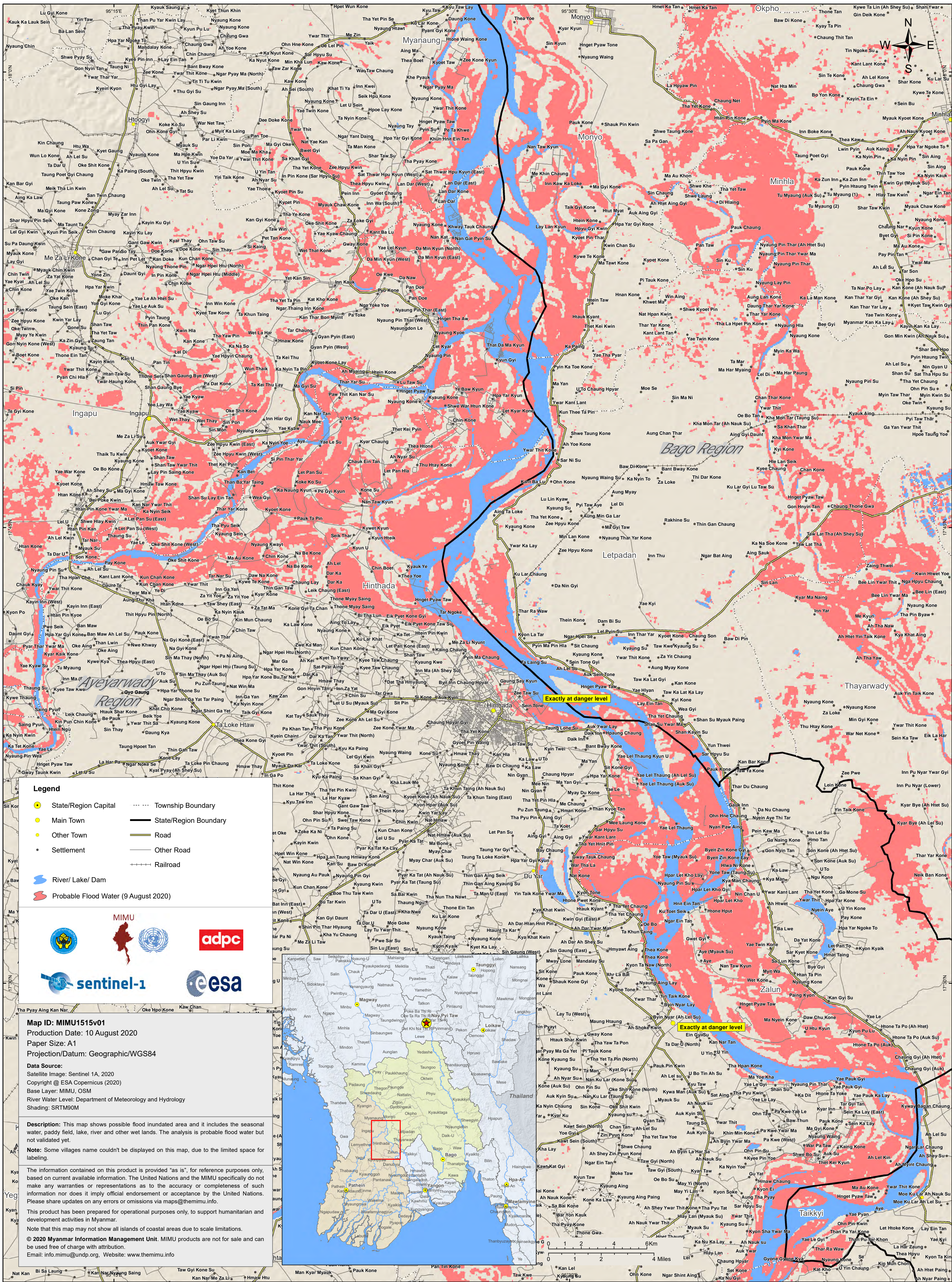


# Probable Flood Inundated Area in Monyo, Ingapu, Hinthada and Zalun Townships

(as of 9 August 2020, 06:15 AM)



**Legend**

- State/Region Capital
- Main Town
- Other Town
- Settlement
- River/ Lake/ Dam
- Probable Flood Water (9 August 2020)
- Township Boundary
- State/Region Boundary
- Road
- Other Road
- Railroad

MIMU  
adpc  
sentinel-1  
esa

Map ID: MIMU151501  
Production Date: 10 August 2020  
Paper Size: A1  
Projection/Datum: Geographic/WGS84  
Data Source: Satellite Image: Sentinel 1A, 2020  
Copyright © ESA Copernicus (2020)  
Base Layer: MIMU, OSM  
River Water Level: Department of Meteorology and Hydrology  
Shading: SRTM90M

**Description:** This map shows possible flood inundated area and it includes the seasonal water, paddy field, lake, river and other wet lands. The analysis is probable flood water but not validated yet.

**Note:** Some villages name couldn't be displayed on this map, due to the limited space for labeling.

The information contained on this product is provided "as is", for reference purposes only, based on current available information. The United Nations and the MIMU specifically do not make any warranties or representations as to the accuracy or completeness of such information nor does it imply official endorsement or acceptance by the United Nations. Please share updates on any errors or omissions via [maps@themimu.info](mailto:maps@themimu.info).

This product has been prepared for operational purposes only, to support humanitarian and development activities in Myanmar.

Note that this map may not show all islands of coastal areas due to scale limitations.

© 2020 Myanmar Information Management Unit. MIMU products are not for sale and can be used free of charge with attribution.  
Email: [info.mimu@undp.org](mailto:info.mimu@undp.org). Website: [www.themimu.info](http://www.themimu.info)