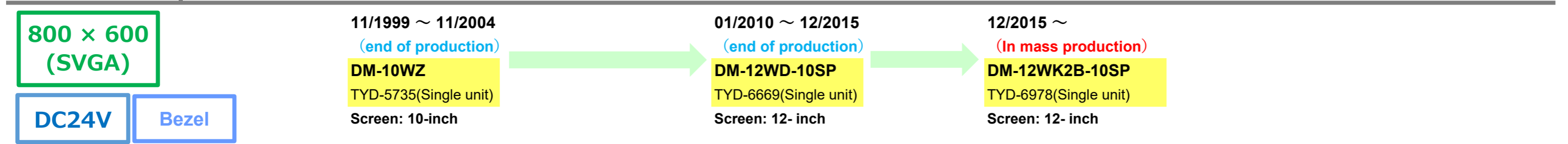
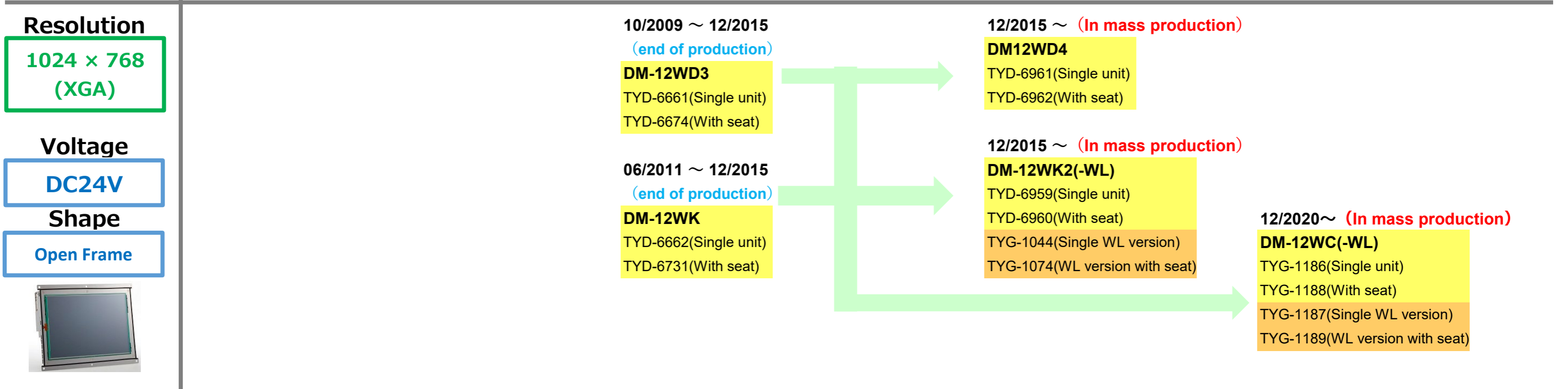
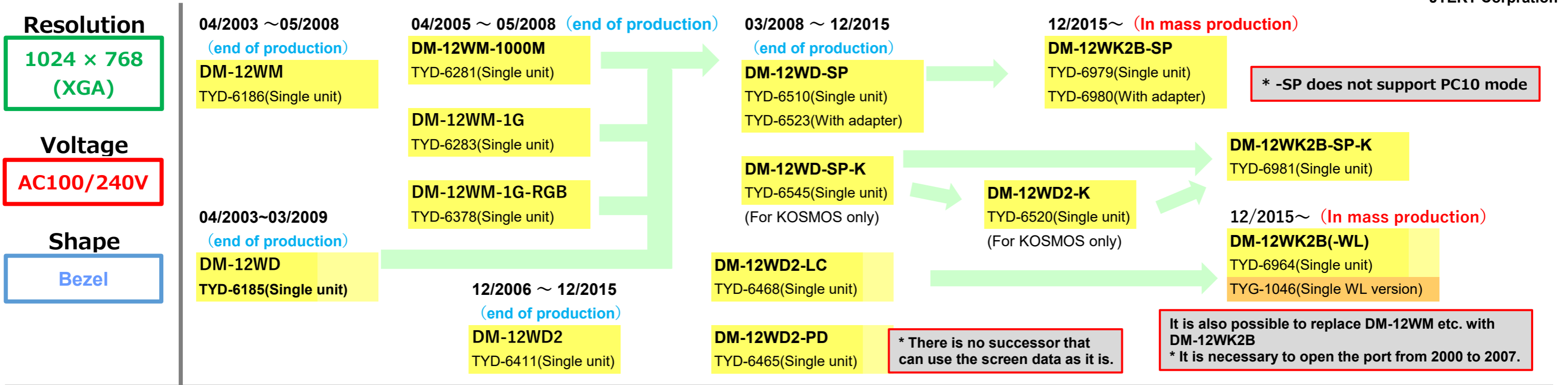


Direct circuit monitor Model Number List(12-inch)



Direct circuit monitor Model Number List(10-inch & 7-inch)

Resolution

1024 × 768
(XGA)

Voltage

DC24V

Shape

Open Frame



OPTIONS

DM-10WK2(-WL)

TYD-6833 10- inch Surface Sheet
TYZ-6778 10-inch Screen Protection Sheet
TYD-6906 DM-10WK2 Replacement Clock Battery

DM-10WC(-WL)

TYD-6833 10-inch Surface Sheet
TYG-1179 10WC Screen Protection Sheet

Screen data editing software : ScreenWorks-T

TJD-6183 : Japanese edition
TJD-6184 : English edition

Screen editing support software

TJD-6854 : Screen Helper7/12 (Japanese)
TJD-6855 : Screen Helper7/12 (English)

* Please use Screen Helper 12 for 10 inches.

04/2013~07/2018 (end of production)

DM-10WF
TYD-6745(Single unit)
TYD-6754(With seat)

10/2020~ (In mass production)

DM-10WC(-WL)
TYG-1160(Single unit)
TYG-1164(With seat)
TYG-1161(Single WL version)
TYG-1165(WL version with seat)

* DM-10WF and DM-10WK2 are not compatible with each other due to the difference in panel cut size. Screen data is compatible

* DM-10WK2 (-WL) can be replaced with 10WC (-WL)

'18/3~ (In mass production)

DM-10WK2(-WL)
TYG-1039(Single unit)
TYG-1040(With seat)
TYG-1047(Single WL version)
TYG-1054(WL version with seat)

Resolution

800 × 480
(W-VGA)

Voltage

DC24V

Shape

Bezel



'06/6~'08/9
(end of production)

DM-7WM
TYD-6354(Single unit)

'09/6~'10/5
(end of production)

DM-7WM-MP
TYD-6646(Single unit)

* 7WM and 7WS have different panel cut sizes

'13/4~'18/7
(end of production)

DM-7WS
TYD-6797(Single unit)

'18/7~'20/7
(end of production)

DM-7WS2(-WL)
TYG-1096(Single unit)
TYG-1097(Single WL version)

'20/7~ (In mass production)

DM-7WC(-WL)
TYG-1162(Single unit)
TYG-1163(Single WL version)

'13/4~'18/7
(end of production)

DM-7WS-NC
TYD-6931(Single unit)

'18/7~'20/7
(end of production)

DM-7WS2-NC(-WL)
TYG-1098(Single unit)
TYG-1099(Single WL version)

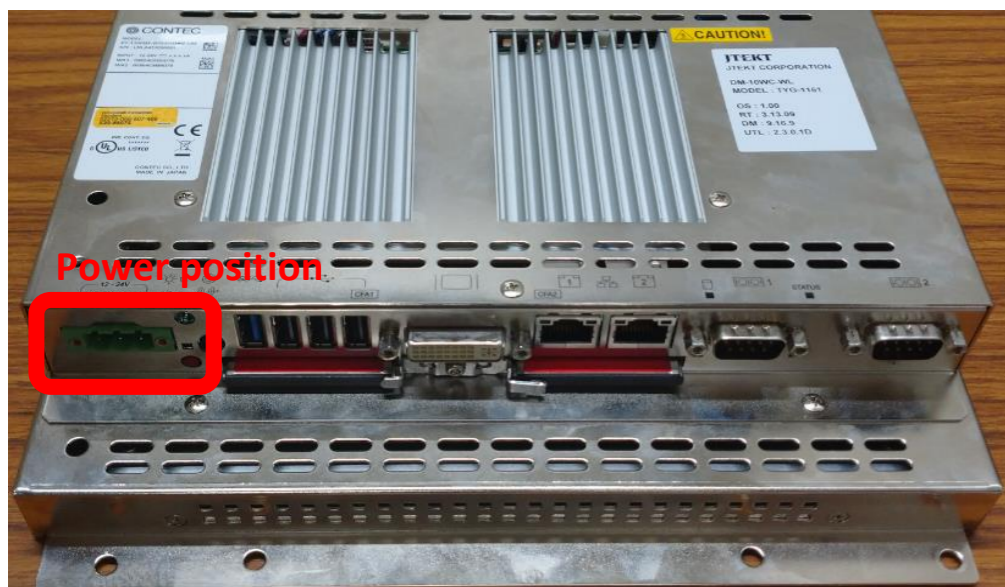
* 7WS2-NC can be replaced with 7WC.

Direct circuit Monitor wiring (10 inch & 7 inch)

DM-10WF



DM-10WC

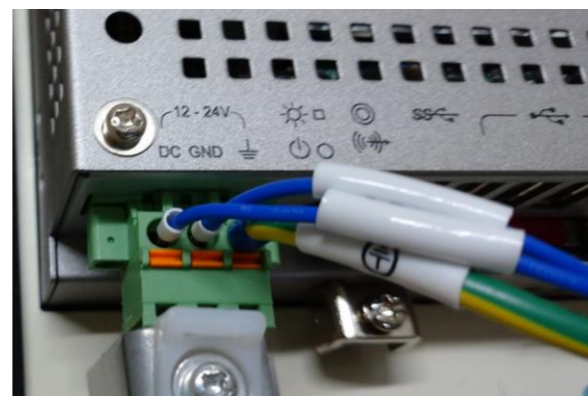


The number of pins on the power connector has been changed from 2 pins to 3 pins.

DM-7WS2



DM-7WC



The number of pins on the power connector has been changed from 2 pins to 3 pins. In addition, DM-7WC has a screw to fix the connector to the main body. When replacing, fix the connector to the main body and attach it to the operation panel before wiring.