



TRITON®

Engineered for You

Spring 2021







Triton Audio represents the finest quality available today. Designed and engineered in the United States, Triton Audio is built and marketed to meet the needs of today's dealer and end consumer. A no compromise design approach is utilized which requires that state of the art solutions are available for all of today's vehicles. In all respects

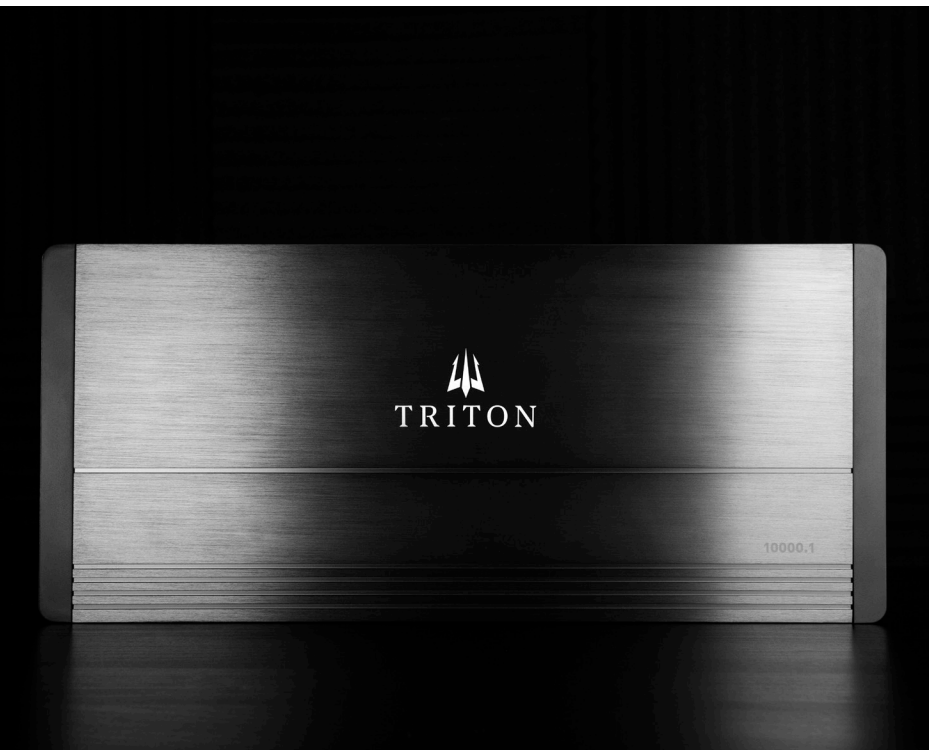
Triton Audio is engineered for you.

What is causing people to turn heads is how much our engineering efforts have paid off. Unnecessary costs have been totally eliminated and the savings have been poured back into very elegant products that have the very best sound and durability when blind tested against competitors at similar prices. For example, check out our industry-leading SQ Amplifiers delivering state of the art micro circuitry that packs extraordinary power from a very small footprint – these amplifiers will fit any vehicle whether a motorcycle, ATV, boat, or traditional family sedan.

All products are sourced directly from our factories, there are no intermediate distributors or brokers that bloat the cost of the product. Every one of your hard-earned dollars goes directly into the product. Bottom line: you get more for your money.

Listen to Triton Audio – you will hear the engineered for you difference!

ENGINEERED FOR YOU





SX SERIES | AMPLIFIER



FEATURES

SX Series amplifiers utilize EPS Technology enhancing the power supply by utilizing EE Ferrite Core Transformers. The SX100001 features a unique feedback system that automatically makes corrections to the digital signal. SX Series is the perfect blend between instant power, maximum efficiency and reliability.

SX100001

MONOBLOCK CLASS D

Power RMS 1Ω @ 14.4V: 1 x 10000W

Power RMS 2Ω @ 14.4V: 1 x 5500W

Power RMS 4Ω @ 14.4V: 1 x 3025W

THD+N @ Nominal Power: 0.1%

Frequency Response: 5Hz ~ 6kHz

SNR: 88dB

Input Sensitivity: 0.5V to 8V

Damping Factor: >200

Operating Voltage: 9V to 16V

High Pass Filter: 5Hz to 80Hz

Low Pass Filter: 60Hz to 6000Hz

Total Efficiency: 75%

Max Current Draw (A): 1058

Music Current Draw (A): 529



SQ SERIES | AMPLIFIERS



SQ30001

MONOBLOCK CLASS D

Power RMS 1 Ω @ 14.4V: 1 x 3900W
Power RMS 1 Ω @ 12.6V: 1 x 3000W
THD+N @ Nominal Power: 1%
Frequency Response: 5Hz ~ 20kHz
Input sensitivity: 0.2 ~ 4V
SNR: 84dB

SQ160011

MONOBLOCK CLASS D

Power RMS 1 Ω @ 14.4V: 1 x 1600W
Power RMS 2 Ω @ 14.4V: 1 x 880W
Power RMS 4 Ω @ 14.4V: 1 x 484W
THD+N @ Nominal Power: <1%
Frequency Response: 10Hz ~ 30kHz

SQ120011

MONOBLOCK CLASS D

Power RMS 1 Ω @ 14.4V: 1 x 1200W
Power RMS 2 Ω @ 14.4V: 1 x 660W
Power RMS 4 Ω @ 14.4V: 1 x 363W
THD+N @ Nominal Power: 0.1%
Frequency Response: 10Hz ~ 30kHz

FEATURES

SQ Amplifiers are built for just about any application you can imagine. Utilizing the very latest in state of the art technology, Triton Audio makes no compromises in delivering incredibly accurate sound from a compact chassis. Lots of little things, and some really big things have been added to create the best sounding amplifiers possible.

SQ80044

4-CHANNEL CLASS D

Power RMS 2Ω @ 14.4V: 4 x 200W
Power RMS 4Ω @ 14.4V: 4 x 110W
Bridged Power 4Ω @ 14.4V: 2 x 400W
Bridged Power 8Ω @ 14.4V: 2 x 220W
THD+N @ Nominal Power: <1%
Frequency Response: 5Hz ~ 20kHz



SQ80042

4-CHANNEL CLASS D

Power RMS 1Ω @ 14.4V: 4 x 200W
Power RMS 2Ω @ 14.4V: 4 x 110W
Power RMS 4Ω @ 14.4V: 4 x 60W
Bridged Power 2Ω @ 14.4V: 2 x 400W
Bridged Power 4Ω @ 14.4V: 2 x 220W
THD+N @ Nominal Power: <1%



SQ40044

4-CHANNEL CLASS D

Power RMS 2Ω @ 14.4V: 4 x 100W
Power RMS 4Ω @ 14.4V: 4 x 55W
Bridged Power 4Ω @ 14.4V: 2 x 200W
Bridged Power 8Ω @ 14.4V: 2 x 110W
THD+N @ Nominal Power: <1%



SQ25022

2-CHANNEL CLASS D

Power RMS 1Ω @ 14.4V: 2 x 125W
Power RMS 2Ω @ 14.4V: 2 x 69W
Power RMS 4Ω @ 14.4V: 2 x 38W
Bridged Power 2Ω @ 14.4V: 1 x 250W
Bridged Power 4Ω @ 14.4V: 1 x 138W
THD+N @ Nominal Power: <1%



SQ25024

2-CHANNEL CLASS D

Power RMS 2Ω @ 14.4V: 2 x 125W
Power RMS 4Ω @ 14.4V: 2 x 69W
Bridged Power 4Ω @ 14.4V: 1 x 250W
Bridged Power 8Ω @ 14.4V: 1 x 138W
THD+N @ Nominal Power: <1%





EL SERIES | AMPLIFIERS



EL10001 MONOBLOCK CLASS D

Peak Power: 1000W
Power RMS 2Ω @ 14.4V: 1 x 500W
Power RMS 4Ω @ 14.4V: 1 x 350W
THD+N @ Nominal Power: 1%
Frequency Response: 20Hz ~ 150Hz



EL6002 2-CHANNEL CLASS D

Peak Power: 300 Watts x 2
Bridged RMS 4Ω @ 14.4V: 1 x 240W
Power RMS 2Ω @ 14.4V: 2 x 120W
Power RMS 4Ω @ 14.4V: 2 x 85W
THD+N @ Nominal Power: <1%
Frequency Response: 20Hz ~ 20kHz



EL6004 4-CHANNEL CLASS D

Peak Power: 1000 Watts
Bridged RMS 4Ω @ 14.4V: 2 x 240W
Power RMS 2Ω @ 14.4V: 4 x 120W
Power RMS 4Ω @ 14.4V: 4 x 85W
THD+N @ Nominal Power: <1%
Frequency Response: 20Hz ~ 20kHz



EL10005 5-CHANNEL CLASS D

Peak Power: 2000 Watts
Bridged RMS 4Ω @ 14.4V: 2 x 250W
Power RMS 4Ω @ 14.4V: 4 x 120W + 1 x 500W
Power RMS 8Ω @ 14.4V: 4 x 80W + 1 x 300W
THD+N @ Nominal Power: <1%
Frequency Response: 20Hz-150Khz

FEATURES

EL Series Amplifiers are built to over deliver on all specifications. Conservatively rated, these amplifiers deliver extraordinarily clean sound from a very small footprint.



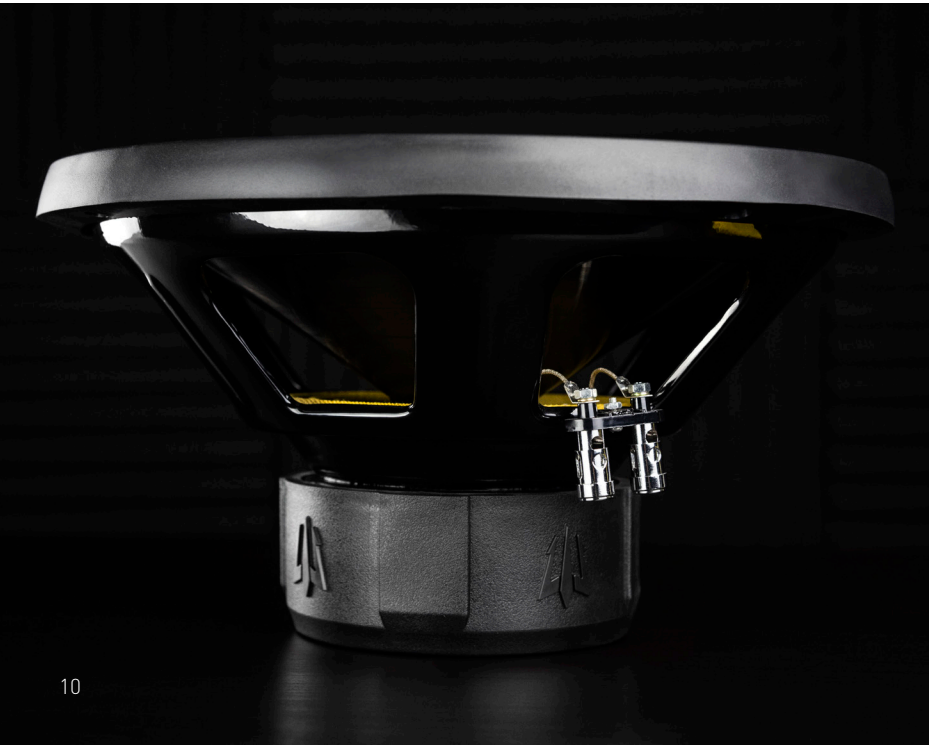
TRITON

EL 600.2

TRITON

TRITON

EL 600.2





SQ SERIES | SUBWOOFERS



FEATURES

With one of the best motor designs ever, Triton Audio SQ Series subwoofers are built to deliver extraordinary bass performance. SQ subwoofers boast solid silver stitched in tensile leads, butyl rubber surrounds and two-inch voice coils.

SQ12S4/SQ12D4

12" SVC/DVC SUBWOOFER

Peak Power: 1000 Watts
RMS Power: 300 Watts
Impedance: 4 Ohm
Voice Coil: 2"
Magnet: 66oz



SQ10S4/SQ10D4

10" SVC/DVC SUBWOOFER

Peak Power: 1000 Watts
RMS Power: 300 Watts
Impedance: 4 Ohm
Voice Coil: 2"
Magnet: 66oz



SQ8S4/SQ8D4

8" SVC/DVC SUBWOOFER

Peak Power: 600 Watts
RMS Power: 200 Watts
Impedance: 4 Ohm
Voice Coil: 1.5"
Magnet: 48oz





ST SERIES | SUBWOOFERS



FEATURES

Triton Audio's new "ST" Series Thin Subwoofers are truly extraordinary with massive magnet structures and up to 3" voice coils these subwoofers offer a no compromise design that beat out competitors costing much, much more. Once again, Triton Audio delivers on its value promise.

ST12D4

12" THIN DVC SUBWOOFER

Peak Power: 600 Watts
RMS Power: 250 Watts
Impedance: 4 Ohm
Voice Coil: 3"
Magnet: 35.4 oz
Frequency Response: 38Hz-450Hz



ST10D4

10" THIN DVC SUBWOOFER

Peak Power: 600 Watts
RMS Power: 250 Watts
Impedance: 4 Ohm
Voice Coil: 2.5"
Magnet: 35.4 oz
Frequency Response: 38Hz-450Hz







EL SERIES | SUBWOOFERS



EL10S4

10" SVC SUBWOOFER

Peak Power: 500 Watts

RMS Power: 150 Watts

Impedance: 4 Ohm

Voice Coil: 2"

Magnet: 40.7oz

EL12S4

12" SVC SUBWOOFER

Peak Power: 700 Watts

RMS Power: 200 Watts

Impedance: 4 Ohm

Voice Coil: 2"

Magnet: 40.7oz



EL SERIES | BASS PACKAGE



FEATURES

Triton-Audio engineers simply refuse to take short cuts. These bass packages offer premium bass enhancement that's clean, tight, and powerful. Features like flush mounted subwoofers take extra time to build but make the look as good as the sound.

EL122P

12" DUAL BASS PACKAGE

Two 12" EL Subwoofers

Peak Power: 1400 Watts (2 x 700)

RMS Power: 400 Watts (2 x 200)

Voice Coil: 2"

One EL10001

RMS Power @4 Ohms: 350W x 1

RMS Power @2 Ohms: 500W x 1

Size: 27.95"W x 12.79"T x 12.4"D

Vented MDF Enclosure

Prewired: 2 Ohm Final Load

Size: 30.7"W x 14"T x 13.5"D

EL102P

10" DUAL BASS PACKAGE

Two 10" EL Subwoofers

Peak Power: 1000 Watts (2 x 500)

RMS Power: 300 Watts (2 x 150)

Voice Coil: 2"

One EL10001

RMS Power @4 Ohms: 350W x 1

RMS Power @2 Ohms: 500W x 1

Size: 27.95"W x 12.79"T x 12.4"D

Vented MDF Enclosure

Prewired: 2 Ohm Final Load

Size: 27.95"W x 12.79"T x 12.4"D



SQ SERIES | SPEAKERS



FEATURES

SQ Series speakers feature something extraordinary – a one-inch pivoting pure silk dome tweeter along with solid silver stitched in tensile leads and active crossovers. Triton engineers went the extra mile to ensure purer sound and higher reliability.



SQ622

6.5" 2-WAY COMPONENT

Peak Power: 150 Watts
RMS Power: 50 Watts
Impedance: 4 Ohm
Voice coil: 1"
Crossover: 12db
Grille Included



SQ522

5.25" 2-WAY COMPONENT

Peak Power: 120 Watts
RMS Power: 40 Watts
Impedance: 4 Ohm
Voice coil: 1"
Crossover: 12db
Grille Included



SQ6922

6 X 9" 2-WAY COAXIAL

Peak/RMS Power: 210/70 Watts
Impedance: 4 Ohm
Voice Coil: 1"
Magnet: 20.7oz
Grille Included



SQ6822

6 X 8" 2-WAY COAXIAL

Peak/RMS Power: 150/50 Watts
Impedance: 4 Ohm
Voice Coil: 1"
Magnet: 20.6oz

SQ6022

6.5" 2-WAY COAXIAL

Peak Power: 150 Watts
RMS Power: 50 Watts
Impedance: 4 Ohm
Voice Coil: 1"
Magnet: 12.6oz
Grille Included



SQ5022

5.25" 2-WAY COAXIAL

Peak Power: 120 Watts
RMS Power: 40 Watts
Impedance: 4 Ohm
Voice Coil: 1"
Magnet: 7.8oz
Grille Included



SQ4022

4" 2-WAY COAXIAL

Peak/RMS Power: 110/35 Watts
Impedance: 4 Ohm
Voice Coil: 1"
Magnet: 6.23oz
3/4" Silk Dome Tweeter
4 x 6 in. Adaptor Plate Included
Grille Included



SQ275

2.75" MID TWEETER

Peak/RMS Power: 30/15 Watts
Impedance: 4 Ohm
Voice Coil: 0.8"
Magnet: 2.7oz



SQTWK

1" TWEETER SET

25 Watts RMS, 75 Watts Peak
Mounting Kit Includes Flush,
Angle, And Surface Mounts
In Line Crossover With 12 dB
Per Octave Slope





EL SERIES | SPEAKERS



EL62

6.5" 2-WAY COMPONENT

Peak/RMS Power: 80/25 Watts
Impedance: 4 Ohm
Voice coil: 1"
Magnet: 6.3oz
6.5" Woofer
Grille Included
Passive crossover included



EL693

6 X 9" 3-WAY COAXIAL

Peak/RMS Power: 100/30 Watts
Impedance: 4 Ohm
Voice coil: 1"
Magnet: 12.4oz
0.75" Silk Dome Tweeter
Grille Included

FEATURES

The EL Series feature silk dome tweeters delivering phenomenal vocal ranges. Rubber surrounds and polypropylene cones mean better excursion properties, better sound and high reliability. EL speakers are designed to fit just about any vehicle on the road without special cutting, adjustment rings or compromises.

EL692

6 X 9" 2-WAY COAXIAL

Peak/RMS Power: 100/30 Watts
Impedance: 4 Ohm
Voice Coil: 1"
Magnet: 6.3oz
Grille Included



EL682

6 X 8" 2-WAY COAXIAL

Peak Power: 80 Watts
RMS Power: 25 Watts
Impedance: 4 Ohm
Voice Coil: 1"
Magnet: 6.3oz



EL602

6.5" 2-WAY COAXIAL

Peak/RMS Power: 80/25 Watts
Impedance: 4 Ohm
Voice Coil: 1"
Magnet: 6.3oz
Grille Included



ELTWK

0.5" TWEETER SET

15 Watts RMS, 50 Watts Peak
Mounting Kit Includes Flush Mount,
Angle Mount, And Surface Mounts
Passive Crossover Included





SQ SERIES | SPEAKERS



FEATURES

Triton Audio designs and manufactures marine and powersports products to the highest standards for use outdoors. Our coaxial speakers feature a 1" Titanium Tweeters, Polypropelene Cone and Stamped Steel Basket. They are all designed to look good, play loud, play clear and stand up to the elements.



SQ65MB

6.5" LED COAXIAL (BLACK)

Peak/RMS Power: 200/65 Watts
Impedance: 4 Ohm
Voice Coil: 1"
Magnet: 13.1oz
Grille Included



SQ65MW

6.5" LED COAXIAL (WHITE)

Peak/RMS Power: 200/65 Watts
Impedance: 4 Ohm
Voice Coil: 1"
Magnet: 13.1oz
Grille Included



SQRGB

RGB CONTROLLER

Expand the functionality of the LED capable speakers. Connect up to 12 LED-lit speakers to the SQRGB. For additional speakers, additional remotes will be required.

SQ SERIES | POWERBARS

SQPS20

20" AMPLIFIED LED POWERBAR

Peak Power: 400 Watts
RMS Power: 200 Watts
Four 3" Marine Grade Speakers
Two 1" Titanium Dome Tweeters
200 Watt Built-In Amplifier



SQPS27

27" AMPLIFIED LED POWERBAR

Peak Power: 600 Watts
RMS Power: 300 Watts
Six 3" Marine Grade Speakers
Two 1" Titanium Dome Tweeters
300 Watt Built-In Amplifier



SQPS36

36" AMPLIFIED LED POWERBAR

Peak Power: 800 Watts
RMS Power: 400 Watts
Eight 3" Marine Grade Speakers
Four 1" Titanium Dome Tweeters
400 Watt Built-In Amplifier



FEATURES

Our bluetooth speakers display the ultimate balance between high fidelity, performance and long-lasting reliability. All featuring Full Range Premium Marine Grade Speakers, Premium Marine Grade Titanium Dome Tweeters and Quad Bridged Mosfet Power Amplifiers.

EPS Technology

Triton Audio engineers have developed an enhanced power supply utilizing EE Ferrite Core Transformers. This means that the amplifier is more efficient in energy conversion while shielding the amplifiers from noise that can arrive from the audio output section. All Triton amplifiers utilize EPS Technology.

Solid Silver Stitched In Tensile Leads

Most manufacturers use thin, single strand wire to connect their voice coil to the speaker terminals. Triton engineers went the extra mile, sewing in braided pure silver tensile leads. This means purer sound and higher reliability.

1" Pivoting Silk Dome Tweeter

All SQ tweeters utilize pure silk. While most manufacturers utilize cheaper materials with fancy names, Triton engineers insist on silk. Smooth and natural sounding, silk dome tweeters deliver more natural sounding vocal ranges while still delivering highly detailed upper frequencies.

Butyl Rubber Surrounds

The surround material that connects the cone material to the basket is very important. Triton insists on butyl rubber as it is more uniformly performing during high dynamic range stress. The result is tighter bass and better reliability.

