

Powis Castle Artemesia

Artemesia x 'Powis Castle'



A 'Dusty Miller' that will thrive in humid Gulf Coast conditions! This gorgeous evergreen perennial is the perfect 'neutral' to showcase your perennial color. The silvery-gray foliage is delicately cut – like fine silver lace. It grows in a dense billowing mound 2' – 3' tall and 3' – 6' wide. The foliage has a sweet, herbal fragrance when disturbed. Prune in spring just as new growth is starting and do not prune in the fall. Full to part sun, well-drained.



Barleria - White

Barleria cristata 'White'



Grows into a shapely shrub with minimal pruning. The trumpet-shaped 2" long, white flowers opening in terminal clusters in November and continue into mid-December. This is an easy-to-grow shrub, about 4-6ft height, which can be used for a garden hedge or tightly clipped into geometrical shapes. Barleria is easily propagated from cuttings planted in fall directly in the ground. It requires some sun to flower profusely and occasional pruning to promote bushy growth.

Beautyberry, Early Amethyst

Callicarpa dichotoma 'Early Amethyst'

Easily grown in average, medium moisture, well-drained soil in full sun to part shade. Best flowering and fruiting is in full sun. Stems can become leggy in too much shade. Some tolerance for drought. Flowers bloom on new wood. Prune as needed in early spring. Most gardeners prefer to prune stems back to 6" in late winter to early spring each year. Such hard pruning tends to promote shrub compactness and good flowering. In harsh USDA Zone 5 winters, stems may die back to the ground in winter with new growth emerging from the roots in spring. Best cross-pollination and resultant fruit production occur when shrubs are planted in groups or massed.





Brazilian Red Cloak

Megaskepasma erythrochlamys



The Brazilian Red Cloak is a tropical shrub that makes a statement in any landscape (zone 9 - 11). It has very large, light green, heavy leaves, making it well suited for an application where the goal is to hide an eyesore, or to provide privacy. Add to that a constant bloom of large, upright cymes of pink to bright red flowers and you have a WOW specimen shrub that makes people take notice.

The Red Cloak is well suited to almost any cultural situation. It will grow just as well in shade as in full sun. It is partial to light, high organic soil, but will also thrive in very poor soil. It would rather have a moist condition, but again, will do just fine in dry settings. If you apply heavy organic mulch, fertilizer 2 or 3 times a year, water once in a while, your plant will be the talk of the neighborhood.

Red Mexican Butterfly Weed

Asclepias curassivica



A root hardy perennial that grows to 3'. Also reseeds. Blooms in clusters of bright red flowers spring and fall. Responds well to pruning. Full sun, to part sun. Moist, well-drained soil. **Host plant for the Monarch butterfly caterpillar. This is a must for every butterfly garden.**



Red Powder Puff

Calliandra emarginata



This is a slow-growing, evergreen to die-back shrub. It grows to about two to four feet tall. Leaves are composed of four leaflets. It produces red flowers on new growth for a long season of color. It grows well in sun to part shade in a well-drained soil. It is drought tolerant. This plant is an evergreen shrub in zone lower 9a and south. It is not reliable in northern zone 9a.

The plant is evergreen to about 29° F. The plant dies back to the ground in the low to mid-20's F. New shoots and leaves appear in early April. It flowers from mid-June into January or until a hard freeze.





Canna, Red Mexican

Canna Warscewiczii



The beauty of this plant is that it gives your garden cohesion. Instead of having a number of large tropical foliage plants growing in your garden... you have a number of large tropical foliage plants bursting through a sea of luxuriant foliage. The flowers are not huge as with the hybrids, but are unaffected by torrential downpours. Of all the canna varieties, canna Warscewiczii has reputation of being difficult to overwinter.





Cat Whiskers

Orthosiphona



Outstanding spring, summer, & fall blooming tender perennial for part shade gardens. Blooms 12" panicles of light purple or white flowers in heavy cycles. Super showy! Responds well to pruning. Grows 3'-4' tall. Prefers afternoon shade or light shade.

Hummingbirds & Butterflies!!!





Cat Whiskers White

Orthosiphon racemiflora alba



3' tender shrubby perennial, large striking whiskery white flower spikes, blooms spring to frost, part shade, moist, good drainage, hummingbird & butterfly nectar plant.





Cestrum, Red

Cestrum elegans 'Red'



Red Cestrum, unlike the Orange flowering type, is readily available. Fairly drought tolerant but flowers better with some summer water. Grows fast and the arching branches will overshadow other plants nearby if you don't stake/prune. Tough and vigorous/ Very self-cleaning, no pest problems , a very good perennial that deserves more notice.





Texas Gold Columbine

Aquiligia chrysantha 'Texas Gold,'



Texas Gold Columbine is a small to medium perennial plant found in mossy areas of West Texas. When not in bloom, its soft lacy foliage is 8 to 16 inches high. Each leaf has three lobed leaflets. When flowering, it sends up airy 1 to 3 foot stalks, which open to reveal yellow to pale yellow blooms that seem to float above the foliage. The five petals are elongated into knob-tipped spurs. Like other columbines, it is a nectar source for hummingbirds and butterflies. It blooms March through May, with occasional blooms in the summer if grown in shade. Plant in full to partial shade. This plant likes moist, but well-drained soil and will grow best in soil that has been amended with organic matter like compost. Allow about 12-16 inches between plants. After planting, water well and mulch. The plant will spread by self-sowing or re-seeding, but expect the parent plant to last at least several years. Water once a week until well established. During a summer drought, or after a hard winter freeze, the plant will become dormant. However, it will recover when growing conditions improve. But do not over water or it may rot.



Dark Pink Coral Vine

Antigonon leptopus

Trailing sprays of hot rose pink flowers from mid-summer to fall. Beautifully veined, heart shaped leaves with an open, airy look. Climbs by tendrils, fast growing to 40 feet. Zone 9. Sun or part shade and moist, well drained soil. Drought tolerant. A root hardy deciduous vine to grace any arbor, fence or porch.



Coreopsis Lanceleaf

Coreopsis lanceolata



Easily grown in dry to medium moisture, well-drained soil in full sun. Thrives in poor, sandy or rocky soils with good drainage. Tolerant of heat, humidity and drought. Prompt deadheading of spent flower stalks encourages additional bloom and prevents any unwanted self-seeding. Freely self-seeds, and in optimum growing conditions will naturalize to form large colonies. Plants may be cut back hard in summer if foliage sprawls or becomes unkempt. If grown in borders, division may be needed every 2-3 years to maintain robustness.



Coreopsis, Plains

Coreopsis tinctoria Nutt.

A slender, 1-2 ft. annual with pinnately-compound foliage, tickseed is known for its small but abundant yellow flowers, painted maroon near the center. Numerous smooth, slightly angled branches bearing showy, daisy-like flower heads with yellow rays surrounding a reddish-purple central disk. The yellow petals are notch-tipped. Flower heads occur on long stalks from the multi-branching stems.



Giant Dutchman's Pipe

Artistalochia gigantea

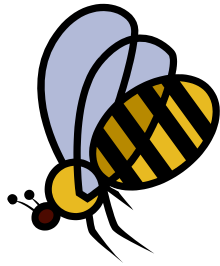
Plant in full to partial sun. USDA Hardiness Zones - In-ground in zones 8 to 10. In zones cooler than 8 (1 to 7) move in and treat as a house plant over winter, or move to a protected area (somewhere that doesn't freeze) before the first frost.

Mature Height/Spread - 10 feet tall in-ground; can be kept smaller with pruning. 1 to 3 feet tall in a container.

Bloom Time - Summer to frost.

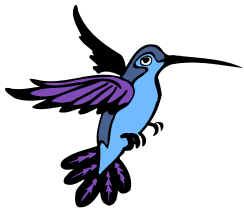
Water weekly about 1".





Esperanza Orange

Tecoma x 'ORANGE'



A bright rich red flowering shrub. Blooms nearly continuously until hit by a hard frost. Attracts hummingbirds, butterflies and bees. Grows 6 feet tall by 5 feet wide. Hardy to 10 to 20 (F). Plant in full sun.

Red Firecracker Fern

Russelia equisetiformis, R. juncea



1" deep red tubular blooms are born in large loose clusters throughout summer. Fine, green lax foliage on long arching stems. A favorite of hummingbirds and a tough long lasting perennial. Firecracker fern is an excellent choice for raised beds or containers where the soft arching foliage and flowers can spill over the edges.

Firecracker Fern is listed as a Texas A&M Outstanding Coastal Plant (see the external info link below) as it has excellent resistance to soil and wind born salts, though it could use some protection from harsh winds. This durable perennial is evergreen in mild climates but will act as a die-back perennial in the cooler portions of its range. Excellent heat tolerance with some drought tolerance once well-established.



Firespike – Purple

Odontenema strictum “Purple”



Firespike is a showy evergreen shrub with sparse, stiff branches that grow mostly straight up to about 6 ft tall. It has shiny dark green leaves with wavy margins and long pointed tips. The leaves are oblong, arranged opposite each other on the stem, and 4-6 in long. From late summer through winter firespike produces abundant 9-12 in upright panicles of brilliant purple flowers.



Firespike – Pink

Odontonema strictum 'Rosea'



Firespike is a showy evergreen shrub with sparse, stiff branches that grow mostly straight up to about 6 ft tall. It has shiny dark green leaves with wavy margins and long pointed tips. The leaves are oblong, arranged opposite each other on the stem, and 4-6 in long. From late summer through winter firespike produces abundant 9-12 in upright panicles of brilliant pink flowers.

Guara
Whirling White
Butterfly

Gaura lindheimeri



It prefers good, rich soil, that's well-drained, but isn't too fussy so it will cope with thinner soil, and it's happy in sun or part-shade. It does well in my garden on light, sandy soil, but it's always best to add lots of compost to the planting hole.

Looks good planted in great swathes, but if you have a small garden, a group of three or five will look good too. Each plant grows to about 3' x 3'.

Grass, Bamboo Muhly (Gulf Coast Muhly)

Muhlenbergia dumosa

Bamboo Muhly

Muhlenbergia dumosa

Common Names: Fairy Bamboo

Light: Full Sun/Part Shade

Height: 3' – 6'

Spacing/Spread: 3' – 6'

Evergreen: No, plant is deciduous.

Color: Gentle feathery foliage.

Interest: Summer to Winter.

Landscape Companions:

Texas Native: No, but particularly well adapted to central Texas and Austin.

Extra: Plant is deer resistant.

Wildlife habitat: Provides food/shelter for bees, butterflies and birds.



Grass, Pink Muhly

Muhlenbergia capillaris

Pink Muhly Grass reaches 4 feet high and 3 feet wide, with a nicely cascading, fountainous habit of foliage and fanned-out, unbelievably profuse blooms. Give it plenty of sunshine and good soil drainage, and it will do the rest, beautifully withstanding heat, humidity, drought, and poor soil! Long-lived and impervious to pests and disease, this North American native is a must-have in the low-maintenance garden. Plant it en masse and enjoy the late-season color for years to come! Zones 6-10.



Grass, Suwannee Blue Eyes

Sisyrinchium angustifolium 'Suwannee'

The numerous, narrow, light-green leaves of this perennial form dense, tufted clumps which steadily grow with new foliage during the season. The flattened, leaf-like flowering stems may be up to 18 in. long and bear light-blue, star-shaped flowers a few inches above the leaves. Height is 1-1 1/2 ft. Several delicate, blue or deep blue-violet flowers with yellow centers in 2 broad bracts top a flat stem, generally only 1 flower at a time in bloom; stems taller than the clusters of narrow, sword-shaped leaves near base. Growing conditions: moist to wet soil, full sun to part shade, average to poor soil.



Yellow Tree Hibiscus *Hibiscus hamabo*



A beautiful & unique hibiscus “tree” that grows about 10'-12' tall & 10'-12' wide. This hardy, deciduous large shrub or small tree has attractive, somewhat rounded leaves with a silver backing & is covered with 3"-4" bright sulphur-yellow flowers with a maroon center in summer. It likes full sun & a well-drained soil.

Hummingbird Mint

Agastache aurantiaca 'Salmon pink'

The leaves and flowers of Agastache are highly fragrant with a sweet citrus aroma.

They will tolerate hot dry and hot wet summers. In the garden Agastache will quickly develop into a full bush, flowering from October to April. They are ideal for combination patio containers and landscape plantings.



Hummingbird Mint, Tango

Gastache aurantiaca "Tango"

A real blast of color with bold orange flowers along upright 14" stems. This hummingbird and butterfly magnet has pleasingly fragrant grayish-green foliage with heavy flowering occurring from June until frost. Dance partners include *Lavandula* 'Hidcote' or *Salvia* 'Blue Hill'. Plant in well-drained soil. Drought tolerant once established.



Purple Hyacinth Bean Vine

Hyacinth beans are fun to grow, they are self-sowing annuals and can grow in full sun to partial shade and are fairly drought tolerant once established. They sprout easily and grow quickly reaching 20 feet or more - a very vigorous vine and bloomer - blooming all summer to frost.

Grow these on your fence, arbor or even as a ground cover - a perfect heirloom vine for your cottage garden! Oh, and don't forget the butterflies, bees, hummingbird moths and hummingbirds that frequent the flowers - they'll love them, too!



Jasmine 'Maid of Orleans'

Jasminum sambac 'Maid of Orleans'



This everblooming jasmine has bushy growth and does particularly well on windowsills. We find that the fragrance of the white flowers somehow clears the air. So set one of these plants on the sill, sit in a nearby chair and... breathe... You will discover what others have discovered: the clarity of this fragrance is unrivaled in all of nature. It is well known in Asia for its use in teas and religious observances.



Lantana Camara

Verbenaceae "Cramara"



Common lantana is a rugged evergreen shrub from the tropics. The species will grow to 18"X24" vinelike up supports to greater heights with the help of support. The leaves are rounded tooth edges and a textured surface. Stems and leaves are covered with rough hairs and emit an unpleasant aroma when crushed (smells like cat pee). The small flowers are held in clusters (called umbels) that are typically 1-2 in (2.5-5.1 cm) across. In the tropics lantana is a non-stop bloomer. Blooms from summer and first frost. A lantana may look orange from a distance but the flowerhead is examined at close range it consists of individual white, yellow and red flowers that blend when viewed from afar.





Trailing White Lantana

Lantana montevidensis



A trailing form of Lantana that will only get 12" - 15" in height with a 3' - 6' spread, making it a nice groundcover. It is lovely spilling over a retaining wall, or out of a container, window box, or hanging basket. The blooms are pure white. They appear in masses from spring to fall. White Trailing Lantana's foliage will change to a red to purple color in the colder months. Butterflies!



Little Volcano Lespedeza

Lespedeza liukiuensis
'Little Volcano'

A graceful, deciduous shrub that erupts with bright rosy wine flowers in the fall (and normally a surprise bloom cycle in the spring). Upright, clumping branches are covered with small, dark green leaves. Forms a mound 5' tall by 8' wide. Sun. Well drained soil.



Heidi Sheesley of Tresearch Farms



Little Volcano

Lespedeza



A graceful, deciduous shrub that erupts with bright rosy wine flowers in the fall and normally a surprise bloom in the spring. Upright climbing branches are covered with small, dark green leaves. One plant forms a mound 5ft wide and 8ft tall. Plant in full sun. Well drained soil.





Lily of the Nile

Agapanthus africanus



Lily-of-the-Nile is native to South Africa (not the Nile River as the misleading common name suggests). *A. africanus* is an evergreen species that produces rounded clusters (umbels) of blue, funnel-shaped flowers atop stiff, upright, leafless, fleshy stalks (scapes) typically rising 18-24" tall above a dense mound of basal narrow, strap-shaped, linear, grass-like leaves. Blooms in summer. Foliage mounds are attractive when plants are not in bloom.



Lily of the Nile “Peter Pan”

Agapanthus africanus ‘Peter Pan’



It is grown for the dark, glossy, strap-shaped leaves that arch gracefully. Flowers are borne on long erect stems 3 feet or taller. *Agapanthus* make good background plants or edging along a fence, driveway, or wall. These plants can thrive on conditions of neglect and naturalize readily. They also make excellent tub and container specimens and can be used in cut flower arrangements. In cold winter areas they can be brought indoors for the winter. This lily has light blue flowers with 1 to 1.5 foot flower stalk. Plant height is 8 to 12 inches tall. Foliage can remain evergreen in warmer climates.



Lollipop Plant

Psychystachys lutea



While this perennial also has the common name of shrimp plant because of its bract - that can look like shrimp when they're beginning to grow. The flowers that bloom from spring until fall are white in color and small, which peep through the golden flower head (bract - can be 5 inches long). The long evergreen leaves are dark green and oval shaped, with large veins. It's definitely the flower head that make this attractive.



Mercer Blue Thunbergia

Thunbergia battiscombei



Not fussy about soil as long as it is well drained. Frequent light feedings of fertilizer reward with frequent flushes of fine flowers.

Sun to part shade. Will grow in total shade but with fewer flowers. Provide water when dry, especially when grown in full sun. Will survive short periods of drought if necessary. USDA Zones 10 - 12. This tender tropical is killed back to the ground by frost in Zones 8 and 9 but returns in spring. Treat as annual or overwinter indoors in colder zones. Plant seed in spring or take cuttings in summer. The sprawling stems make natural layers where they touch the ground - clumps form that can be dug and divided.





Mexican Bush Sage *Salvia leucantha*



A beautiful, upright growing 4' salvia with velvety purple spikes of flowers. Blooms a little in spring & summer & has its most spectacular display in fall. Prefers full sun. A must for **hummingbirds!**



Marigold, Mexican Mint



Tagetes lucida

Mexican tarragon is a half-hardy semi-woody sub-shrub that grows 18-30 in tall. The plant is bushy with many smooth, upright, unbranched stems. The leaves are linear to oblong, about 3 in long, and shiny medium green, not blue-green as in real French tarragon. Bruised leaves have a sweet tarragon-like smell with overtones of anise. In late summer Mexican tarragon bears clusters of small yellow flower heads on the ends of the stems. The flower heads are about 0.5 in across and have 3-5 golden-yellow ray florets. They continue to bloom late into autumn.



Steve Christman

© 2004 Floridata.com



Mexican Flame Vine

Senecio confusus



A fast-growing, heat-loving plant, Mexican flame vine, features attractive evergreen foliage. Small clusters of brilliant orange, daisy-like blooms contrast with dark green leaves, deepening to dark reddish-orange as the flowers mature. Although the blooms peak in spring and summer, the vine often produces flowers throughout the year. Mexican flame vine adds charm as it softens the appearance of an unsightly fence or crawls up a trellis. Mexican flame vine is suitable for planting in the warm climates of U.S. Department of Agriculture growing zones 10 and 11.



Mexican Poinciana

Also Known as Mexican Bird of Paradise
Caesalpinia Mexican



Mexican Poinciana is found in Texas only in the extreme lower Rio Grande Valley. It is grown mainly for its highly fragrant, golden flowers borne in attractive racemes 3 to 6 inches long. In tropical regions it can grow to a tree of 15 feet, but north of its native range it usually performs as an herbaceous perennial, growing to a 3 to 6 foot shrub in a growing season. It is highly ornamental with its spectacular flowers and ferny foliage, and thrives in heat, tolerating reflected heat that many flowering shrubs and trees cannot.





Mist Flower - Blue

Conoclinium coelestinum



An open shrub with slender branches that can reach six feet tall, fragrant mist flower explodes in the fall with masses of blue, fuzzy, very fragrant flowers that act as a magnet to hummingbirds, butterflies, and a plethora of other insects. The light green, triangular-shaped leaves are 1 to 3 inches long and have wavy edges. It is more tolerant of dry conditions than are most Eupatoriums, although it will tolerate poorly drained areas as well. It grows in partly shaded to mostly sunny sites, but will bloom more profusely with more sun. Fragrant mist flower makes a showy fall plant in the garden, or can be used massed as an understory or edge plant in more naturalized sites. Heavy shearing in the winter will promote a denser shape and more flowers the following year, since the long-lasting blooms appear only on new wood.



Monarda Panorama Purple



Monarda didyma 'Panorama Purple'

Monarda does best in soil that is rich in organic matter. Deadhead to prolong the blooming season. It does well in full sun or partial shade. It may hang on in stronger shade but will not flower like plants that get plenty of sun. It is not drought tolerant. It does best in soil that never completely dries out. Water during dry spells. USDA Zones 4 - 8. Attractive to hummingbirds, butterflies and bees, is a must-have in butterfly and naturalistic gardens.



Peggy Martin Rose

Rosa 'Peggy Martin'



"Peggy Martin Rose" was one of only two plants surviving 20 feet of salt water over the garden of Mrs. Peggy Martin, Plaquemines Parish, Louisiana, after the destruction of Hurricane Katrina in late August, 2005.

Since then, it has been introduced into commerce in the United States and has become a symbol among gardeners and rose lovers of a tenacious plant associated with a spirit of renewal and regrowth in the aftermath of a devastating blow of Nature against those living and gardening in the Gulf Coast area. Dr. Bill Welch shared cuttings of this rose which he had taken from Peggy Martin's garden in 2003 and established at his country home near Burton.



Forest Frost Prairie Phlox

Phlox pilosa
'Forest Frost'



Introduced by Peter Loos, this extraordinary native, evergreen, pure-white form of *Phlox pilosa* has wonderfully textured needle-like green foliage. Forms a beautiful carpet of showy clusters of white star-shaped flowers each spring. Beautiful when planted in drifts. Averages 6"-8" tall in bloom. Thrives in moist, fertile soil in light shade.



Pigeonberry
Rivina humilis

A unique native “groundcover” perennial that is almost always covered with 1”-2” clusters of pink & white flowers followed by red berries. Foliage turns burgundy in fall. Goes dormant in winter. Can prune back for thicker plants. Birds love the berries!

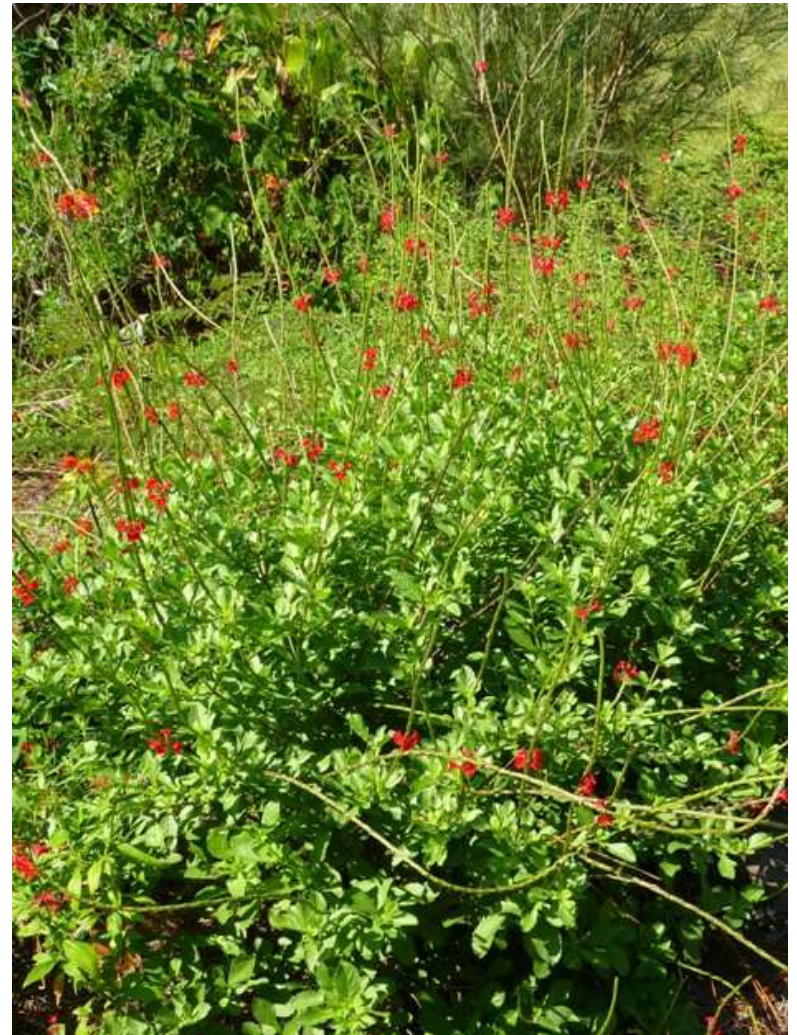


Porterweed Dwarf Red

Stachytarpheta sanguinea



1/4" soft red blooms adorn the long spike-like bloom stems from spring to frost. Another of the smaller varieties creating a dense bush with loads of nectar rich flowers for the butterflies and hummingbirds. Dwarf Red Porterweed is the smallest and most compact Porterweed that we offer and it lends itself to use near the front of the border, in butterfly and hummingbirds gardens, as well as containers.





Porterweed Purple

Stachytarpheta jamanicensis



This pest-free perennial blooms best during warm months. It is strange how these small blue flowers attract butterflies more than large-blooming, showy neighbors. Blue porter weed gradually reseeds nearby for a fresh batch of new plants. Mix with other species of *Stachytarpheta* for a variety of leaf shapes and colors ranging from purple to coral. Attracts butterflies and bees; self-sows. Provide average garden soil in full sun to partial shade.



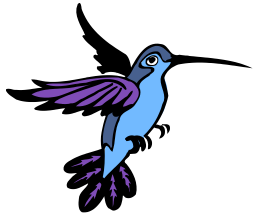
Sage, Texas

Compact

Leucophyllum frutescens



Texas Silver Sage is a flowering evergreen shrub with arching branches and woolly, silvery gray leaves. In summer, it bears solitary, bell-shaped rose-purple flowers an inch across. Useful as hedging and in seaside plantings. Grows in poor, sandy soil and full sun. Sow seed in spring or take greenwood cuttings in early summer.

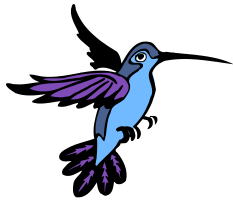


Salvia Lady in White

Salvia coccinea "Lady in White"



"Lady in White" is a terrific variation of cultivar of Texas Sage, a wildflower whose native range includes the southern United States. This showy beauty is a bit more compact than the species, growing about 12 to 18 inches tall with deep green foliage. Blooming from early summer until frost, 'producing dozens of long, airy spikes packed with white flowers. A sure hummingbird magnet, whether planted in the garden or in patio containers.



Salvia Greggii, White

Salvia greggii "White"



"*Salvia greggii* is a popular, usually evergreen sub-shrub growing natively in rocky soils in Central, West and South Texas, and Mexico. It has small, dull pale green, glandular, aromatic leaves. The normally red-flowered species also has white and pink forms and many named cultivars with slightly larger or smaller, rounder or more elongate leaves, varying growth habits from very upright to sprawling, and a wide range of colors in addition to those mentioned above. It is valued for its adaptability to garden soils, its very long blooming season and as a magnet for hummingbirds. In a garden setting, prune back to 4 inches in late winter and again by one half in August to maintain a tidy shape, or allow to grow and spread or sprawl for a more natural appearance, with occasional pruning of old wood. Full Sun. Heat and drought tolerant.





Salvia Hot Lips

Salvia microphylla 'Hot Lips'



Outrageously cool! The fast-growing, 30" tall x 6' wide clump is adorned with stunning bicolor flowers with red tips and white lips...attractive to hummingbirds. When the nights warm in summer, the new flowers are all red with an occasional solid white one. As fall approaches, the flowers again will be bicolored red and white. Even if your school colors aren't red and white, this is truly a "must-have" salvia!

Common Name: Salvia Indigo Spires
Botanical Name: *Salvia hybrid "Indigo Spires"*



Plant Type: Perennial

Growth habit: A beautiful salvia that blooms 8"-10" spikes of rich blue flowers all spring, summer, and fall. Responds well to pruning.

Exposure: Full sun. Mature Height: 4'-6'

Attracts/Supports Wildlife: Excellent for hummingbirds and butterflies.



Landscape Views:



Close Up View (with Monarch Butterfly):





Salvia - Lady in Pink

Salvia coccinea "Lady in Pink"

"Lady in Pink" is a terrific variation of cultivar of Texas Sage, a wildflower whose native range includes the southern United States. This showy beauty is a bit more compact than the species, growing about 12 to 18 inches tall with deep green foliage. Blooming from early summer until frost, 'producing dozens of long, airy spikes packed with pink flowers. A sure hummingbird magnet, whether planted in the garden or in patio containers.



Salvia Lady in Red

Salvia coccinea 'Lady in Red'

Vibrant spikes of red color will cover *Salvia coccinea* 'Lady in Red'. Open and airy, with bright red, 6-8" spikes. Sow seeds indoors 8 weeks before last frost. All-America Winner. A native to South America in the tropics. Attracts butterflies and hummingbirds to its small trumpet like flowers.





Belize Sage

(Red Miniata Salvia)

Salvia miniata



Bright red, tubular flowers summer to fall on tropical looking salvia 2'-3' tall. Responds well to pruning, gets fuller and more floriferous! Prefers part shade.

Hummingbirds!



Mystic Spires Salvia

Salvia longispicata x *farinacea*
'Mystic Spires Blue'



'Mystic Spires' Blue *Salvia* is a compact form of another popular salvia called 'Indigo Spires'. Though shorter than 'Indigo Spires', it flowers even more freely during the entire growing season. It produces masses of true blue flowers that mix nicely with other annuals and perennials, is tolerant of heat and humidity (low and high), and is not bothered by pests, disease or deer. Plant in full sun. Grows to 18-30 ". Adapts to most soil, needs good drainage. Hardy to Zone 8. If needed, plants can be pruned during the growing season as deflowering occurs quickly. Shoots can be pruned to 12 inches or so in the fall after being killed by freezing, but refrain from pruning to the ground until growth is strong in the spring.



Scarlet bouvardia

Bouvardia ternifolia



Blooming from May to November, this lovely Texas native is known for its use as a cut flower. Dead head regularly to keep it dense and neat. **Good drainage-**partial sun to full sun. 2' x 2'. Root hardy in a normal winter. **Hummingbirds!**



Shrimp Plant Maroon

Justica 'Maroon'



Maroon and white 1" tubular blooms arch from a spike of reddish-maroon bracts. An upright to sprawling perennial becoming full and dense with age. Average mature size is 18-24"H x 12-18"W. Hardiness Zones: 9,10,11 . Plant outdoors in full to part sun.



White Shrimp Plant or White Candles

(*Whitfieldia elongata*)



White Shrimp Plant or White Candles is a 4'-6' shrub that prefers filtered light and moist soil. It will wilt if allowed to dry out. It has very attractive shiny dark green foliage and beautiful candle-like white blooms almost year round. It is hardy to the low 30s so should be protected in colder weather. Pinch back for fuller growth.





'Starry Eyes' Nierembergia
Nierembergia gracilis

A wonderful evergreen perennial. Narrow foliage and cheery white flowers with lavender center on a sea of green. Forms a tight mound approximately 10" tall. Smothered in flowers from spring to fall. Loves the full sun. Needs good drainage.



Sweet Olive

Osmanthus fragrans

Fragrant olive (also sweet olive or sweet tea) produces clusters of not particularly showy flowers that have an extremely powerful apricot fragrance. It is a small, upright, evergreen tree or large shrub that will typically grow to 10-15' tall in cultivation, but may reach 20-30' tall in its native habitat in Asia (Himalayas, China and Japan). Features oval, leathery, glossy green leaves (to 4" long). Leaf margins may be smooth or finely toothed. Blooms from Summer to Fall. Varieties of the species bear flowers in orange, gold and reddish hues. Plant in full sun, medium water.





Sweetspire Morning Star



Itea virginica 'Morning Star'

A native east Texas shrub with arching stems of very fragrant 6" racemes of white flowers in early spring, & gorgeous red & orange foliage color in fall.

Grows in sun or shade & can tolerate wet areas. Slowly colonizes & is a great shrub for use in erosion control.

Averages 4'-6' tall. 'Morning Star' Sweetspire forms a full, practically evergreen shrub & 'Little Star' Sweetspire is a dwarf variety that averages 2'-3' tall & has spectacular red fall color.



Texas Wild Olive

Cordia boissieri



Also known as the Texas Olive this plant is native to Mexico and Texas. A large evergreen and can become shrub or small tree it blooms year round with clusters of white flowers. Once established it will become drought tolerant, needs good drainage.

Thevetia

Thevetia peruviana



The flowers are funnel-shaped, 3 inches (7.6 cm) long, and have 5 overlapping petals that open in a spiraled pinwheel. The flowers are followed by 1 1/2 inch (4 cm) in diameter, angled, semi-rhomboid, green ripening to brown or black fruits that usually contain two seeds. The leaves are glossy evergreen above, pale green below, leathery, hairless, spirally arranged, and linear-lanceolate in shape.



Golden Showers Thryllis

Galphimia glauca

It is a semi-hardy plant. If we have an exceptionally cold winter, it can die to the ground, but it will come back, and most years it doesn't even die back. Thryallis likes a lot of sun. While it will grow in shade, it just doesn't bloom as well.

You can allow it to be a large, open loose bush to about 6' tall, or you can keep it dense and low with periodic shearing. Some people plant them in a mass as a low hedge. Just remember that the more you shear, the fewer flowers that you'll have.



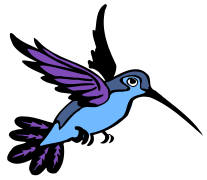


Big Momma Turk's Cap *Malvaviscus drummondii* 'Big Momma'

Another spectacular introduction from Greg Grant! The best of our Native Red Turk's Cap crossed with Giant Pink Turk's Cap, this selection features large, vivid coral-red flowers swirled like a turk's cap from mid-summer until frost. Emerges from dormancy each spring and grows into a lush 6'-8' shrub. Sun or part shade. Will perform well in a variety of soil types.



Hummingbirds!



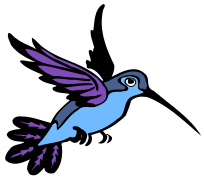
Turks Cap Native Red

Malvaviscus 'Red'



“It’ll grow in full sun, full shade, wet soil, dry soil, alkaline soil and acid soil it’s a pretty dang amazing plant,” said Greg Grant, formerly with AgriLife Research and now with Stephen F. Austin Gardens. “Plus, it attracts hummingbirds and butterflies, you’d think, heck, why isn’t everyone growing it.” The Turk’s cap native to Texas generally has dark green leaves and cherry-red or white flowers that look like miniature Turkish turbans, hence the name.





Turks Cap Pam's Pink



Malvaviscus 'Pam Puryear'

“It’ll grow in full sun, full shade, wet soil, dry soil, alkaline soil and acid soil it’s a pretty dang amazing plant,” said Greg Grant, formerly with AgriLife Research and now with Stephen F. Austin Gardens. “Plus, it attracts hummingbirds and butterflies, you’d think, heck, why isn’t everyone growing it.”





White Lightning Turk's Cap

Malvaviscus arboreus var drummondii
'White Lightning'

The twisted, sleepy white blossoms are borne against the dark green velvety foliage from May to November on this durable perennial. Easy to grow. Mix one in with your red flowered turk's cap for a great contrast. Plant in light shade. Average Mature Plant Size: 2x2ft. Drought and cold tolerant. Attracts hummingbirds.

USDA Cold Hardiness Zones:
7B,8,8B,9,10,11



Vitex Arabian Lilac

Vitex trifolia 'Purpuae'



Exceptional aromatic foliage accent for warm, dry climates. Distinctively colored velvety leaves are green on top with purple undersides. Clusters of small purple flowers appear at shoot tips. Superior accent for wild gardens. Deciduous. Open, branching shrub, moderate growth 8 to 10ft. tall and wide. Follow a regular watering schedule during the first growing season to establish a deep, extensive root system. Watering can be reduced after establishment. Feed with a general purpose fertilizer before new growth begins in spring. Likes full sun, and regular watering, but can also be very drought tolerant! Produces tiny lilac-colored flowers spring through fall.



Montrose Purple *Vitex agnus-castus*



Slightly larger foliage & magnificent blooms that are 3 times larger than the standard Vitex & a richer, darker blue color.
A drought tolerant, sun loving, small, single or multi-trunked tree up to 18' tall. Butterflies!



Heidi Sheesley of TreeSearch Farms