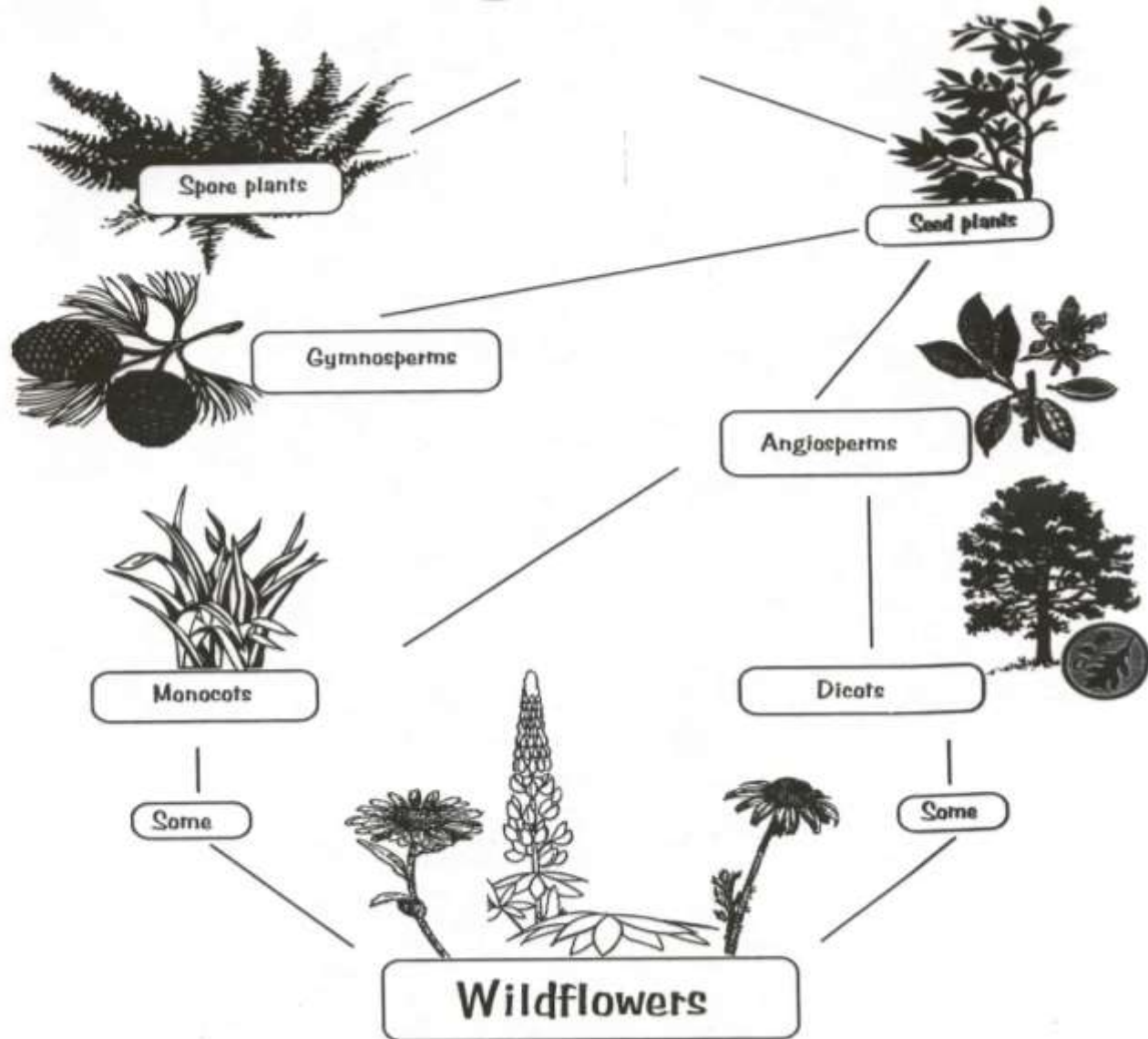


A close-up photograph of a single yellow flower with a brown, textured center. The flower has several long, pointed petals radiating from the center. The background is a soft, out-of-focus green and brown, suggesting a natural outdoor setting. The text is overlaid on the flower in a bold, black, serif font.

Botanically Speaking

Botany Basics

Kingdom Plantae



Vascular vs. Nonvascular Plants

- Two broad categories of plants based on the presence or absence of *vascular tissues*



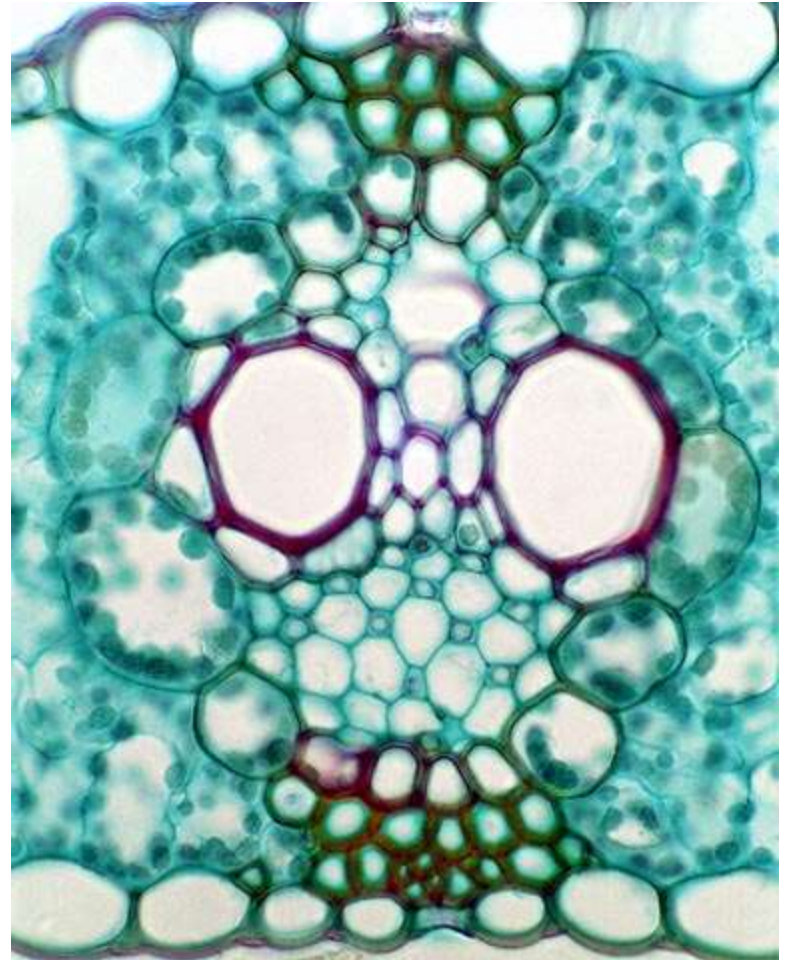
NonVascular Plants

- Nonvascular plants have no vascular tissues



Vascular Plants

- Vascular tissues
 - Xylem
 - Phloem
- More advanced
- Move to land



Four Major Groups of Plants

- Bryophytes
 - Mosses
 - Liverworts
 - Hornworts



Mosses



Liverworts



Hornworts



Ferns



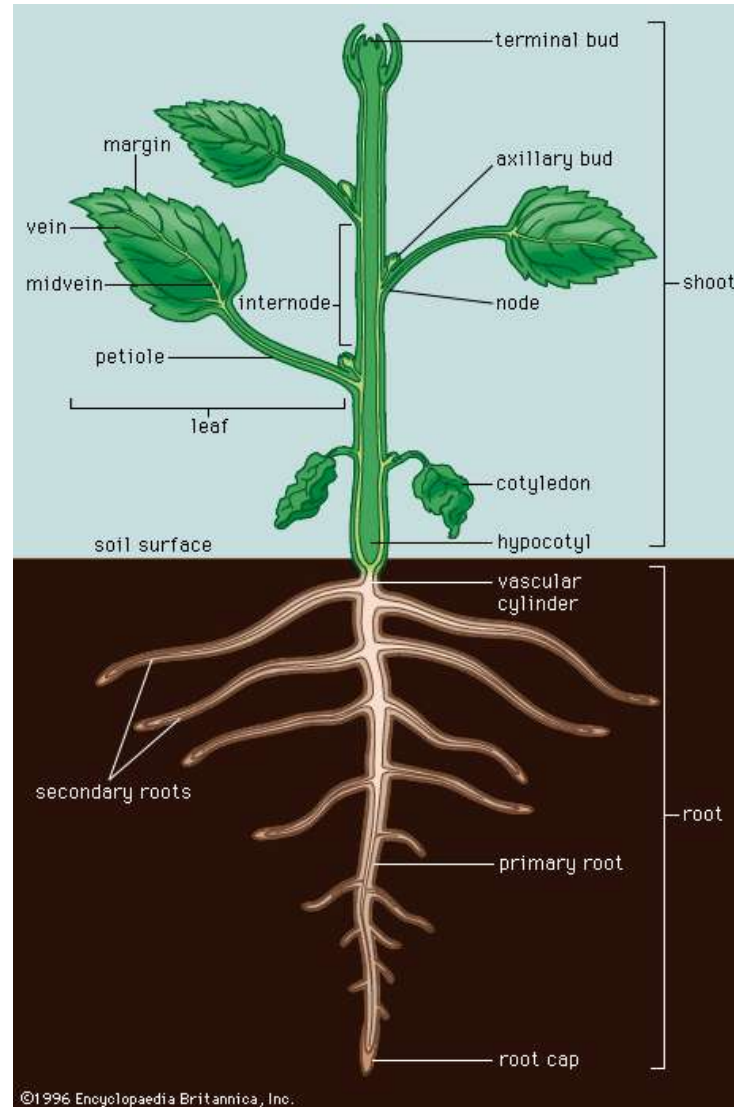
Gymnosperms



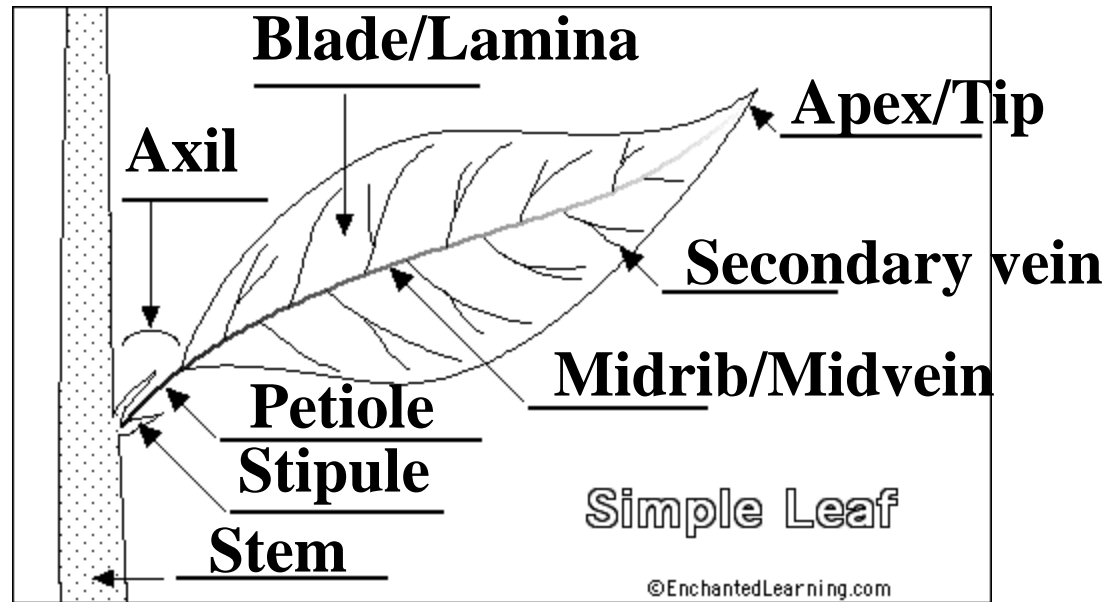
Angiosperms



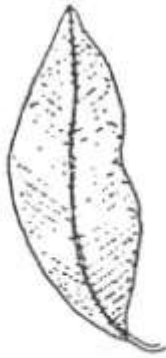
Basic Plant Anatomy



Leaves



Leaf Types & Arrangements



SIMPLE LEAF



PALMATELY COMPOUND LEAF



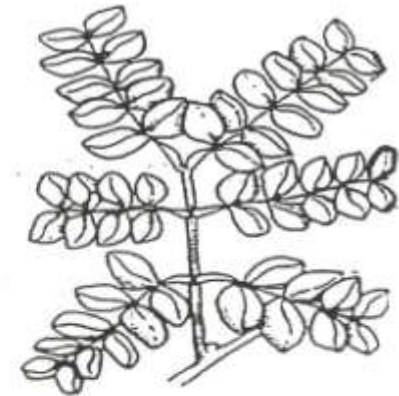
PALMATELY COMPOUND LEAF



BIPINNATELY COMPOUND LEAF



ONCE PINNATELY COMPOUND LEAF



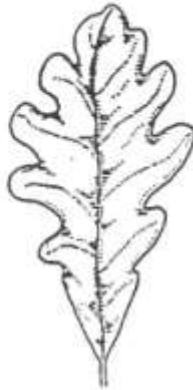
TWICE PINNATELY COMPOUND LEAF

Leaf Margins & Shapes

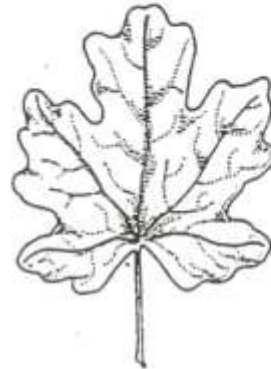
LEAF MARGINS



ENTIRE



LOBED

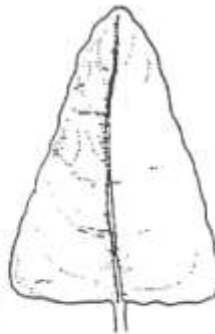


SERRATE

LEAF SHAPES



CORDATE



DELTOID



LANCEOLATE

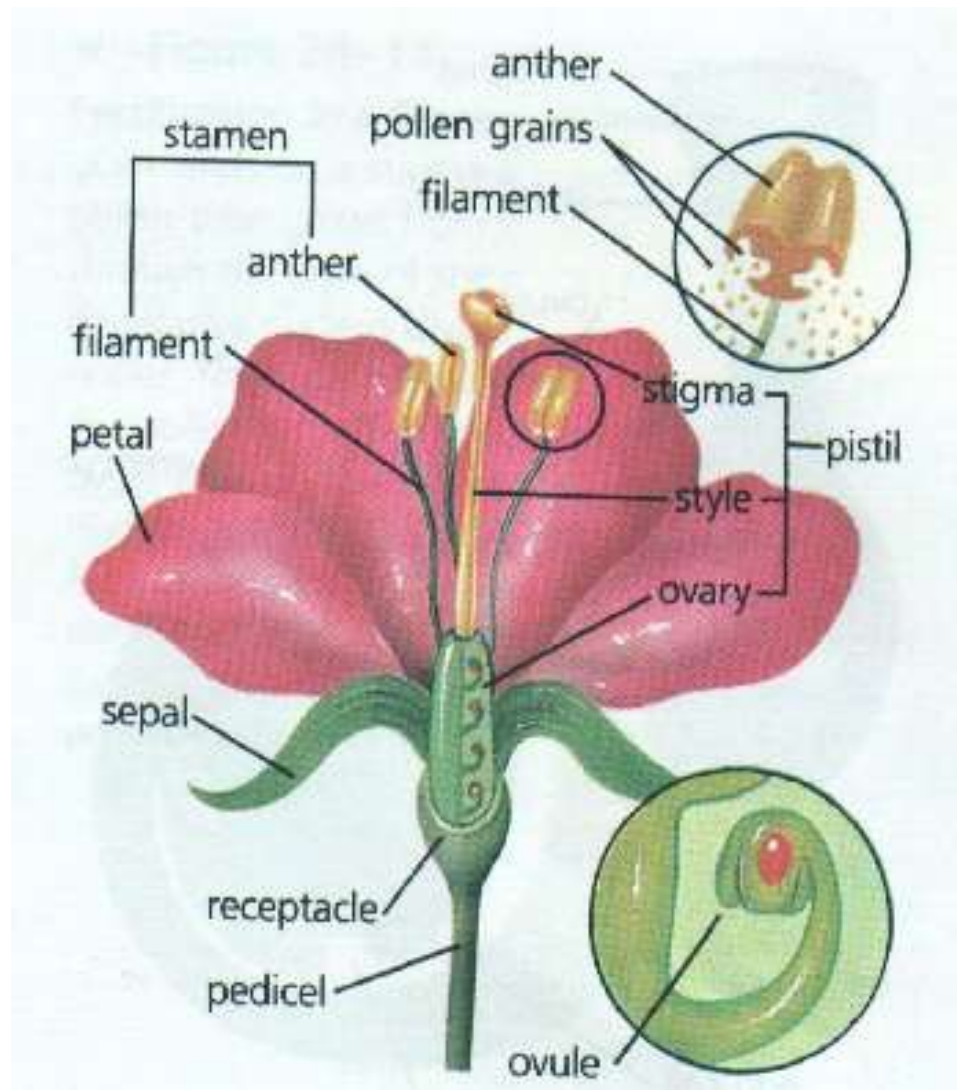


OVATE

Reproductive Organs



Flowers



Fruits



Seeds

