



By Susan L. Miertschin

# Microsoft SQL Server – Tools for Accessing the Server



---



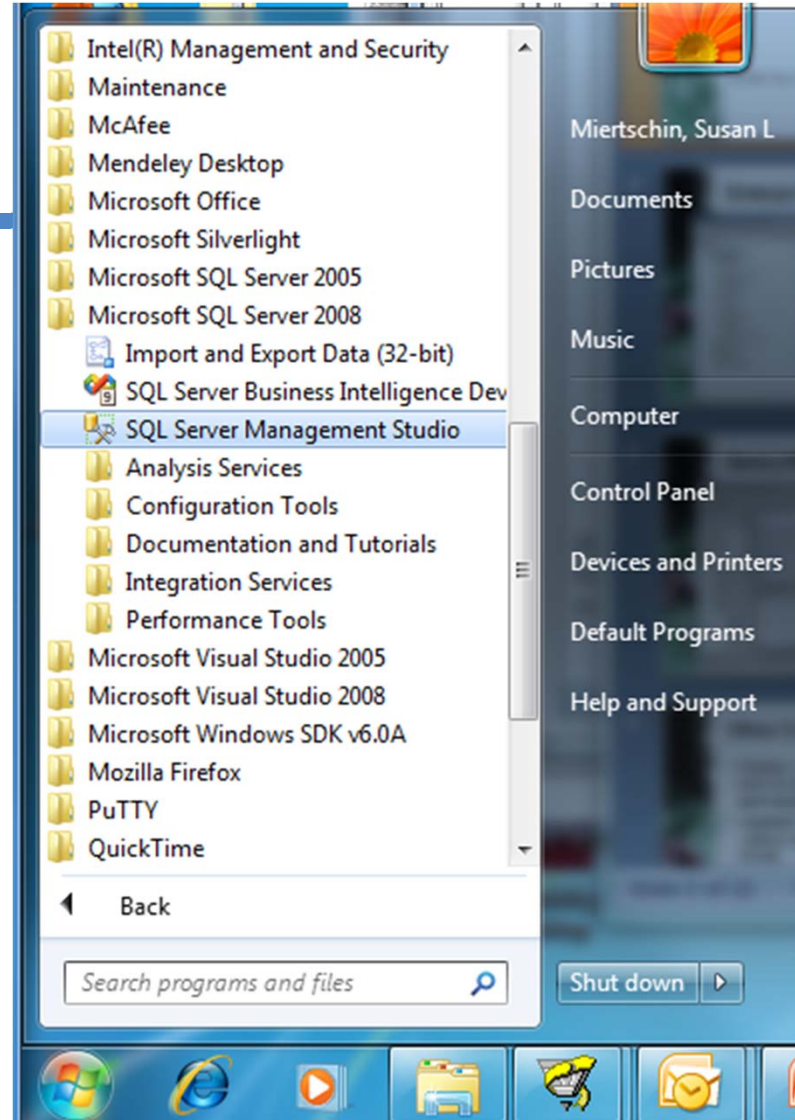
# SQL Server 2008 Client Tools

---

- SQL Server Management Studio
- 

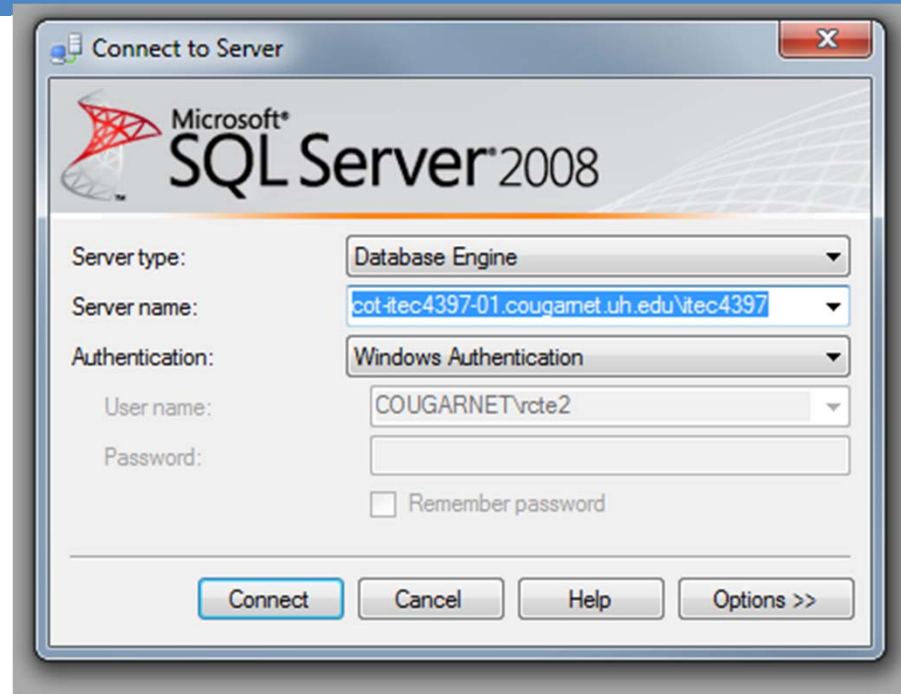
## Start SQL Server Management Studio

- From the Start menu – locate the SQL Server Management Studio software link in the Microsoft SQL Server 2008 group (or in the Microsoft SQL Server 2008 R2 group)
- Start the software



## Log In to the Server

- Cot-cis4397-01.cougarnet.uh.edu\cis4397 is the name of the server
  - This is file path as opposed to a url, hence the \
- You should not have to provide Windows credentials, as the workstation will pass them on to the server (if you have logged on to a computer in the Cougranet domain on campus)
- No guarantees you can do this from home – but, certainly, you would need to VPN in to UH Cougranet first





# Investigate the Database

- Expand the Tables node
- Expand the Views node

The screenshot displays the Microsoft SQL Server Management Studio interface. On the left, a query window shows a SQL query and its results. The query is:

```
SELECT * FROM request
```

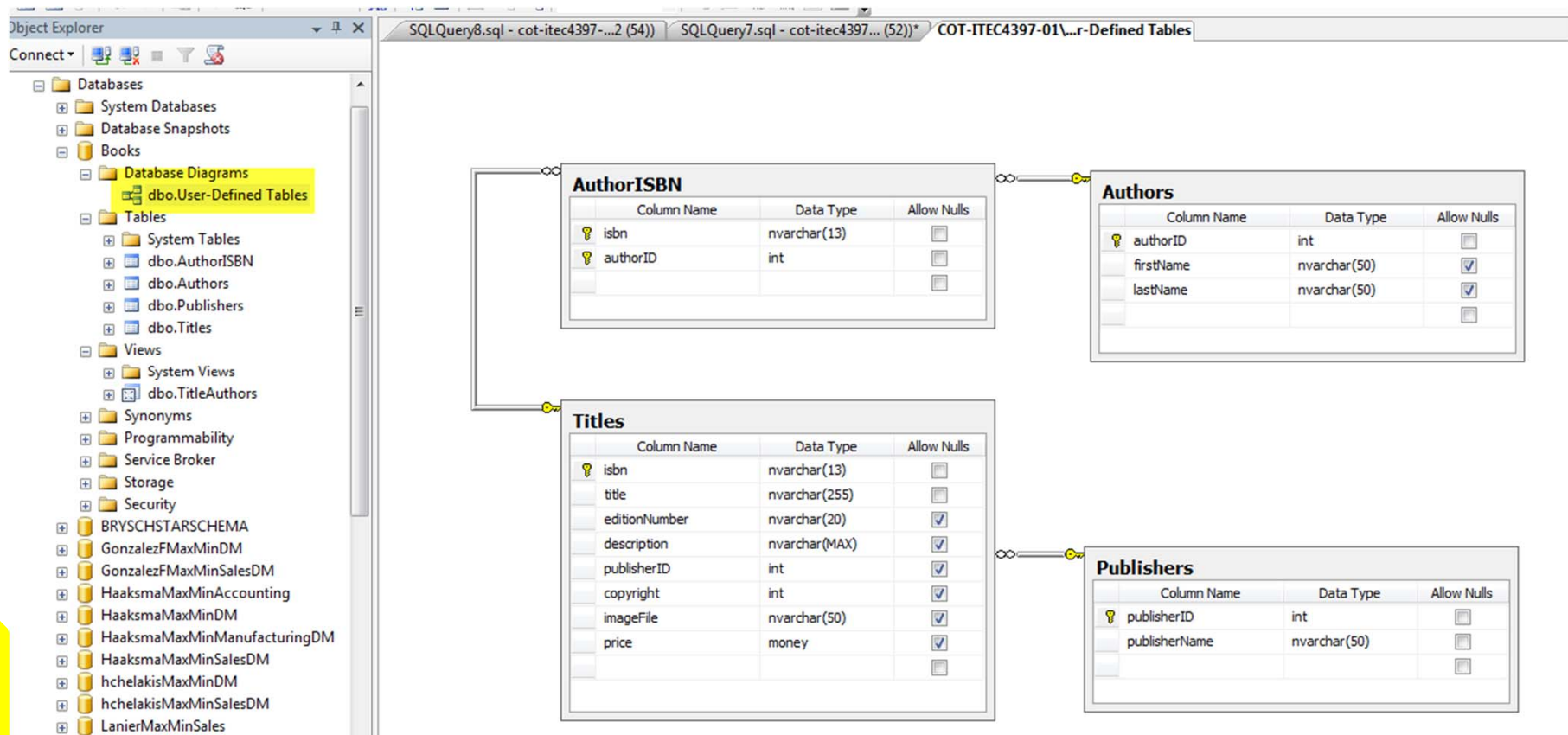
The results show a single row with a timestamp: 10:06 PM.

On the right, the Object Explorer shows the following tree structure:

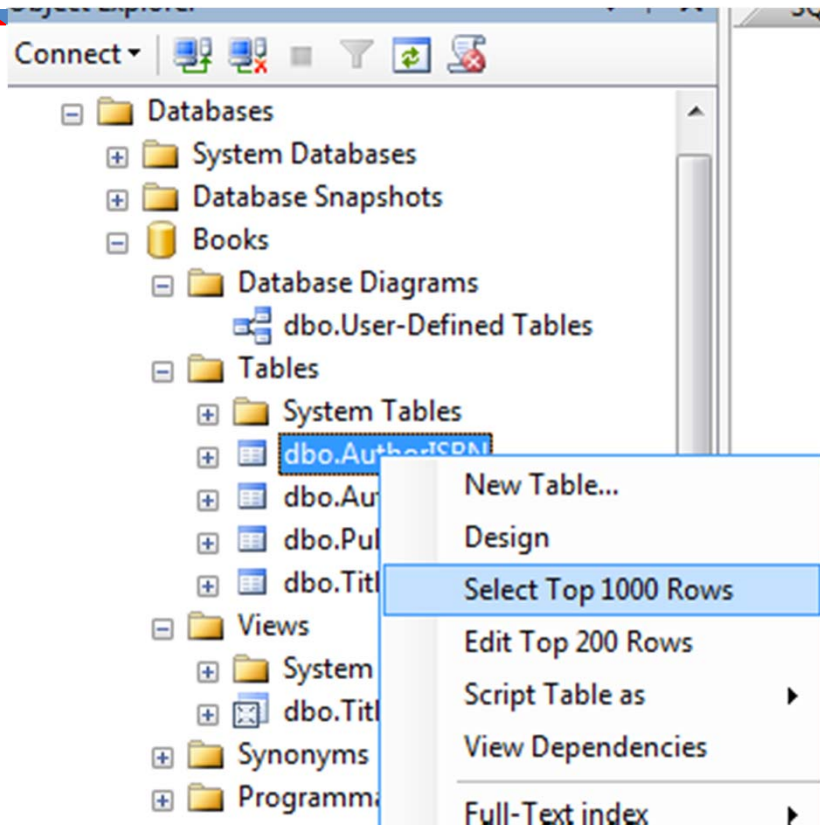
- Databases
  - System Databases
  - Database Snapshots
  - Books
    - Database Diagrams
    - Tables
      - System Tables
      - dbo.AuthorISBN
      - dbo.Authors
      - dbo.Publishers
      - dbo.Titles
    - Views
      - System Views
      - dbo.TitleAuthors
    - Synonyms
    - Programmabilitv

# Look at the Database Diagram

- Expand the node
- Open the diagram or create your own diagram (right click – New Db Diagram – add all the tables)



## To See Data ...

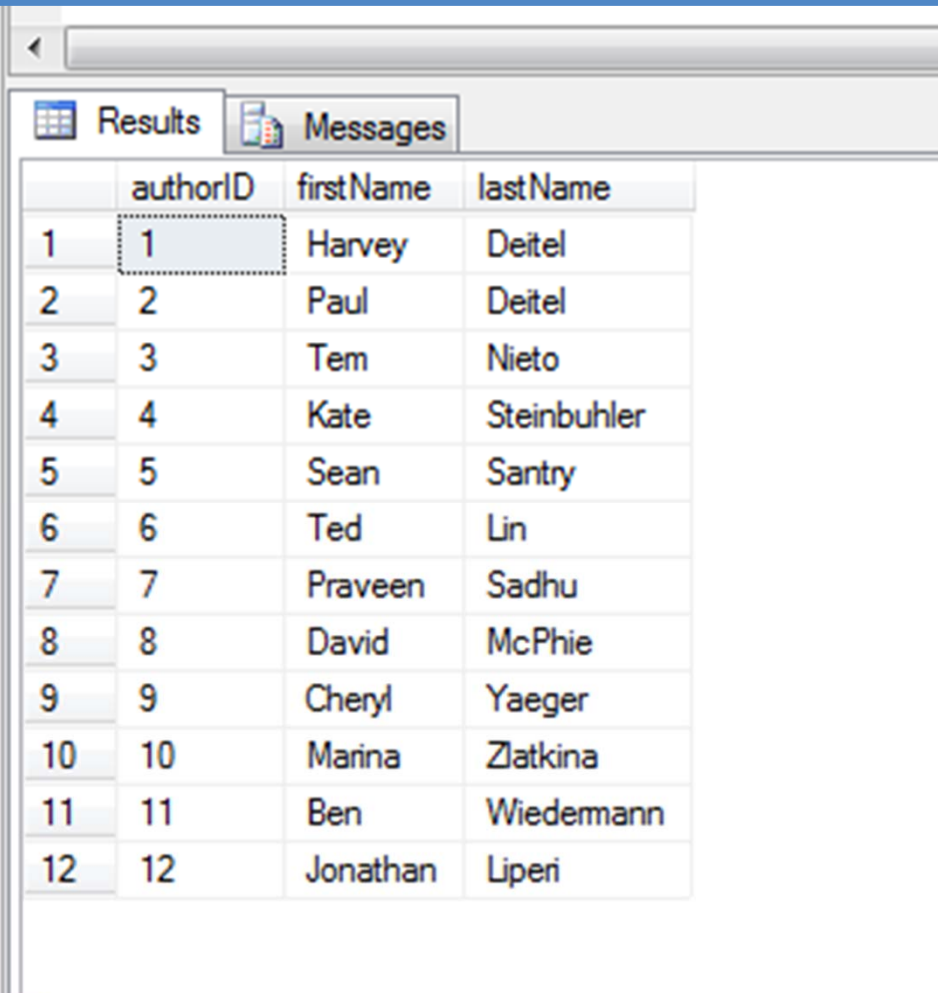


- Right Click on a table or view
- Choose - Select Top 1000 Rows



## Voila ... See Data

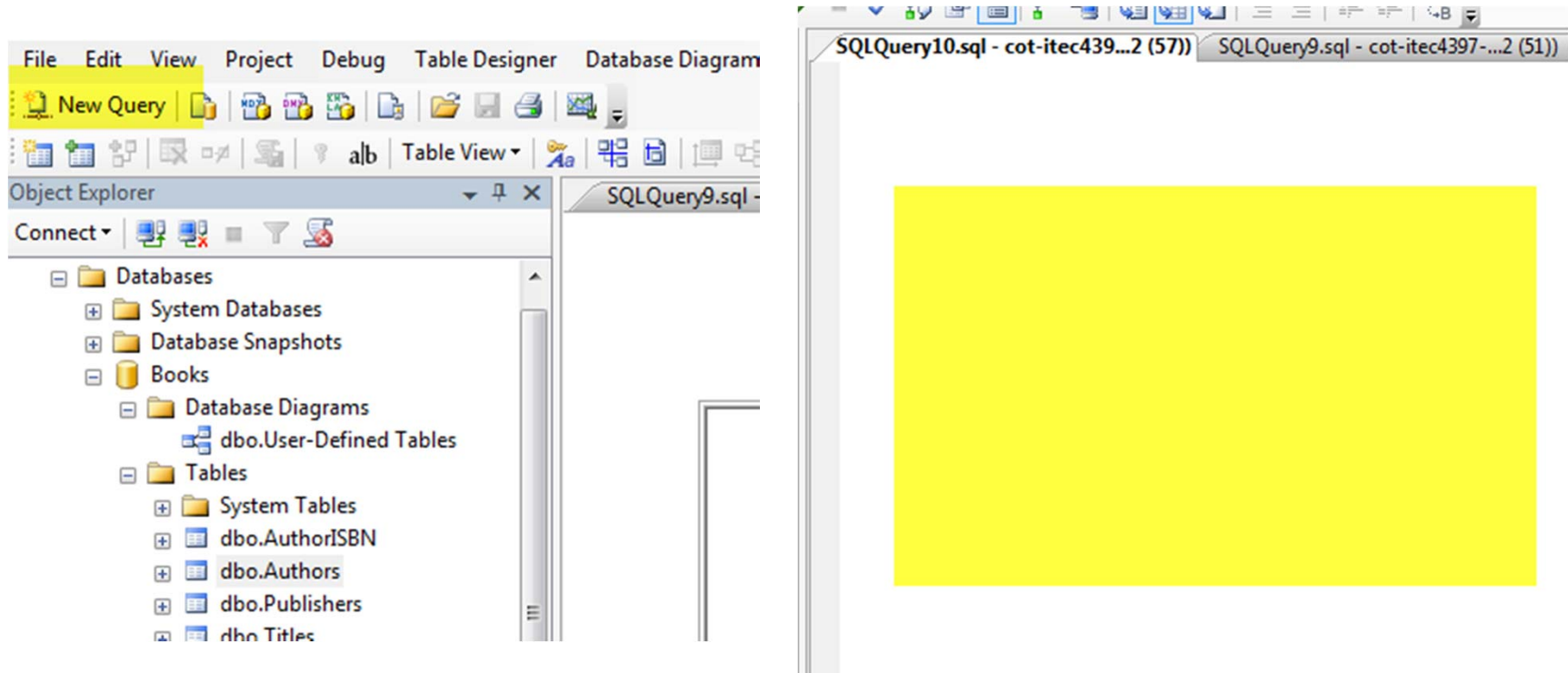
➤ Also works for a view



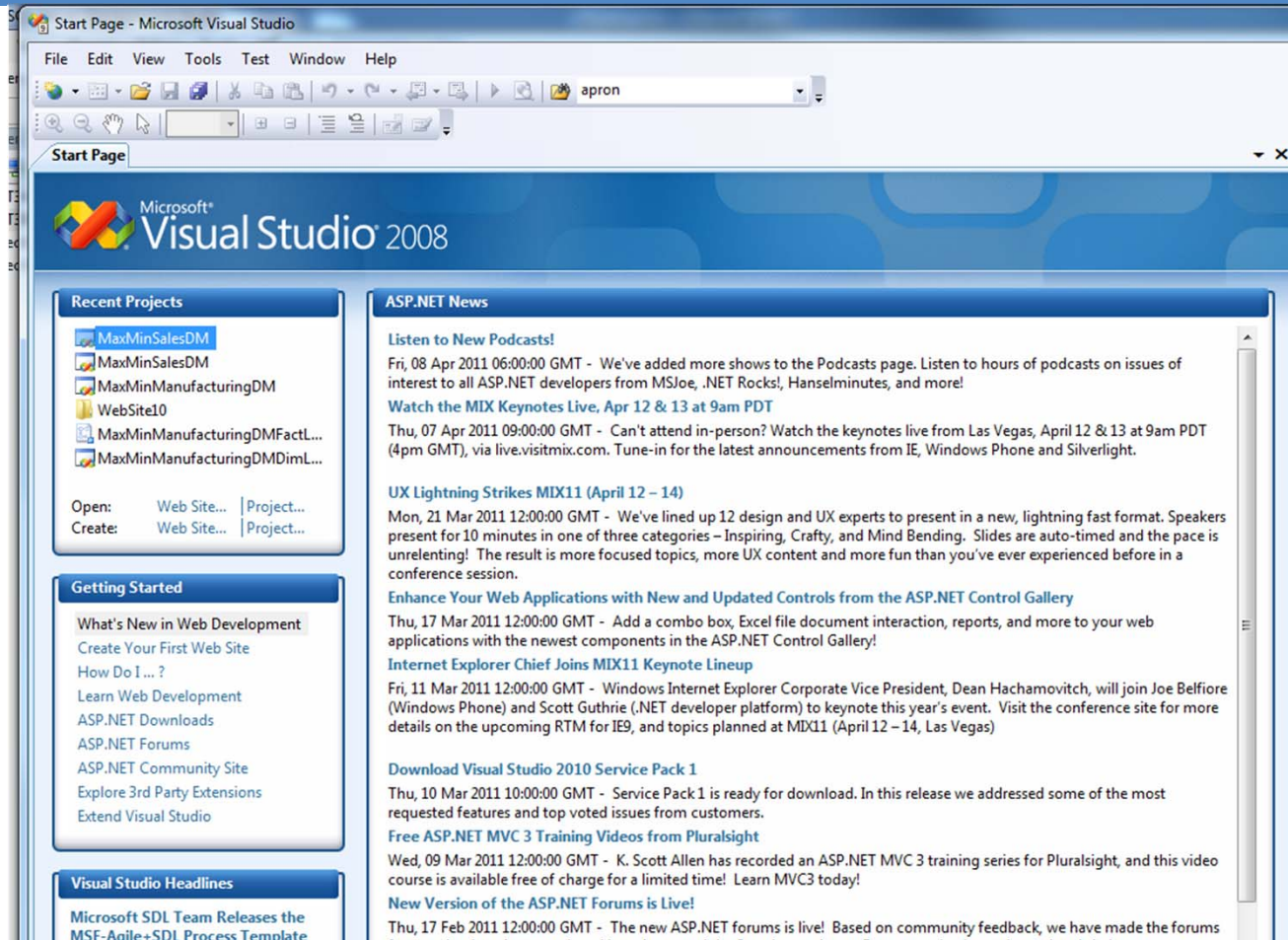
The screenshot shows a database results window with two tabs: 'Results' and 'Messages'. The 'Results' tab is active, displaying a table with the following data:

	authorID	firstName	lastName
1	1	Harvey	Deitel
2	2	Paul	Deitel
3	3	Tem	Nieto
4	4	Kate	Steinbuhler
5	5	Sean	Santry
6	6	Ted	Lin
7	7	Praveen	Sadhu
8	8	David	McPhie
9	9	Cheryl	Yaeger
10	10	Marina	Zlatkina
11	11	Ben	Wiedemann
12	12	Jonathan	Liperi

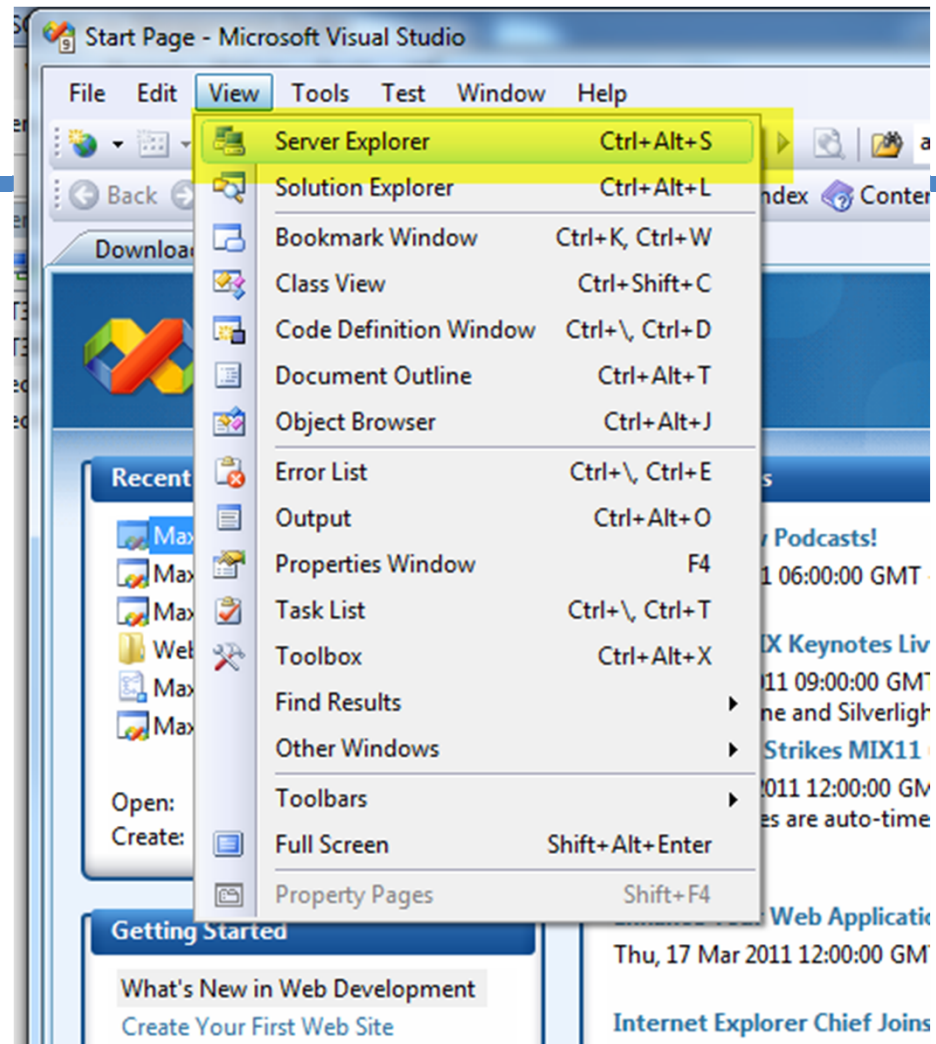
# Can Also Write SQL Commands...



# Or ... Use Visual Studio

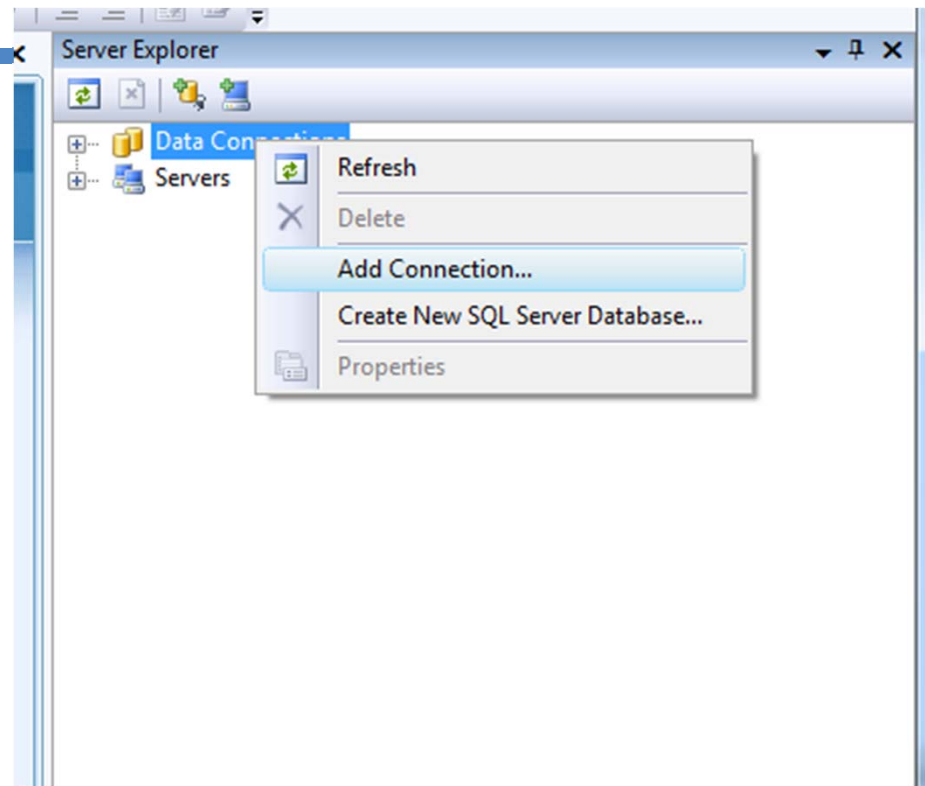


# View the Server Explorer



## Create a New Data Connection

- Right Click on Data Connections in Server Explorer
- Select Add Connection



## Use the Add Connection Dialog Box

- Create an MS SQL Server connection
- Cot-cis4397-01.cougarnet.uh.edu\cis4397 is the server name
  - The first part is the name of a windows server
  - The second part is the name of the SQL Server instance installed there
- Use Windows Authentication
- Select the Books database
- Click Test Connection to verify
- Click OK

Enter information to connect to the selected data source or click "Change" to choose a different data source and/or provider.

Data source:  
Microsoft SQL Server (SqlClient) Change...

Server name:  
cot-itec4397-01.cougarnet.uh.edu\itec4397 Refresh

Log on to the server

Use Windows Authentication  
 Use SQL Server Authentication

User name:   
Password:   
 Save my password

Connect to a database

Select or enter a database name:  
Books ▼

Attach a database file:  
 Browse...

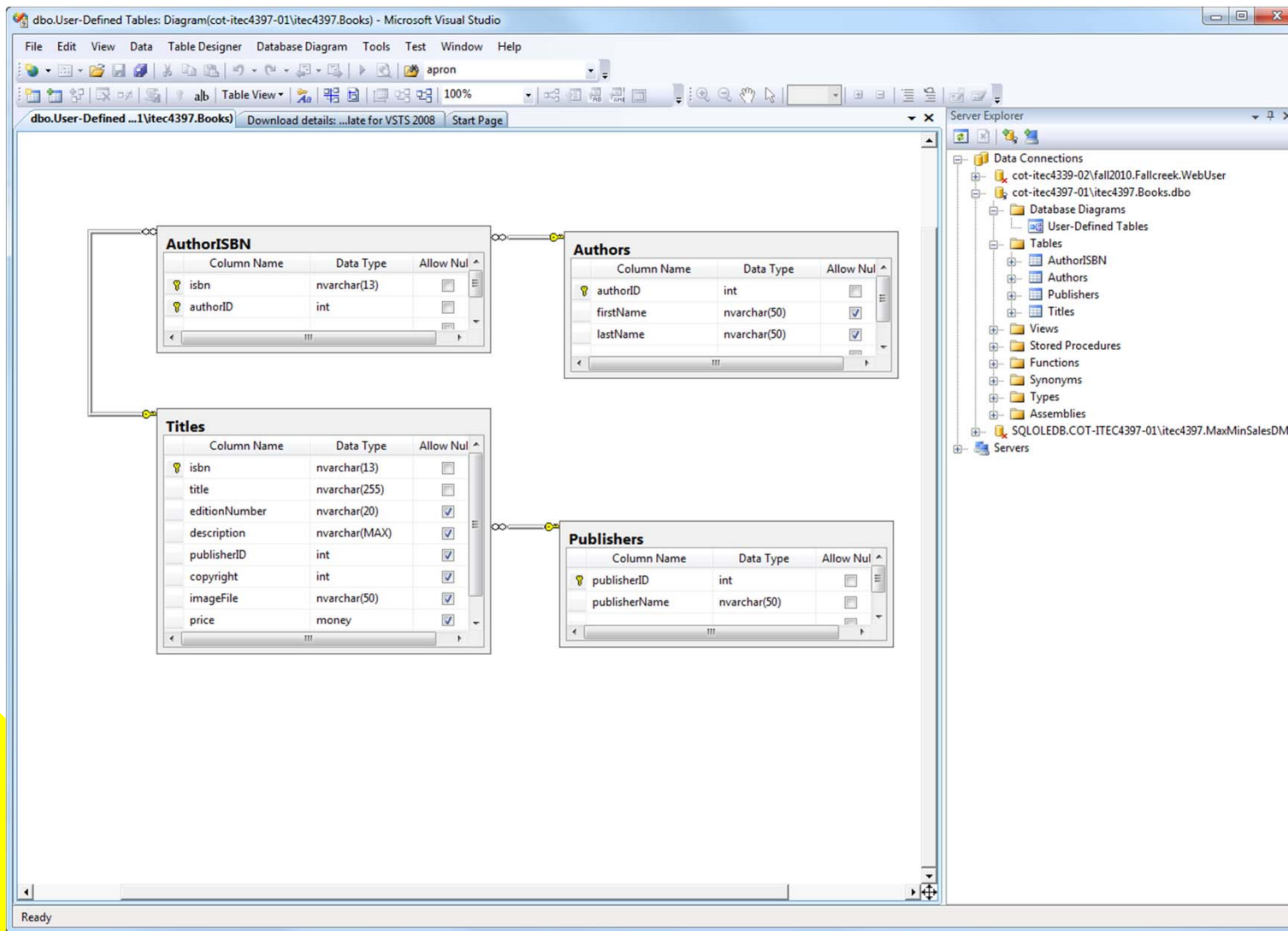
Logical name:

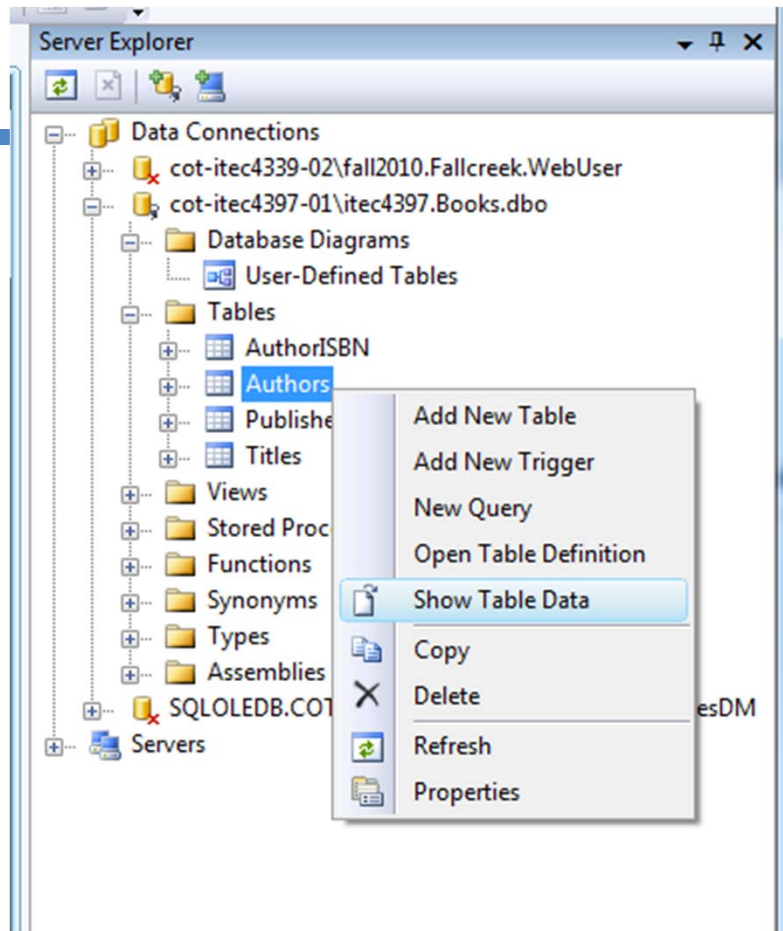
Advanced...

Test Connection OK Cancel

.NET Control Gallery

➤ Expand the Books node  
Double Click to open  
the Db Diagram





## See the Data

- Right click on a table name
- Select Show Table Data to see rows of data
- Select New Query to add a page where you can type SQL queries and execute them





By Susan L. Miertschin

# Microsoft SQL Server – Tools for Accessing the Server



---