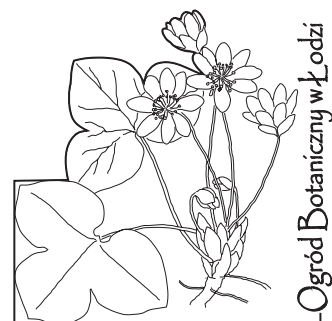




Hortus Botanicus Lodziensis

INDEX SEMINUM 2017



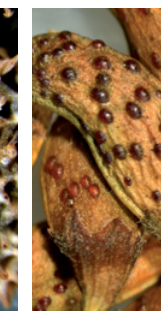
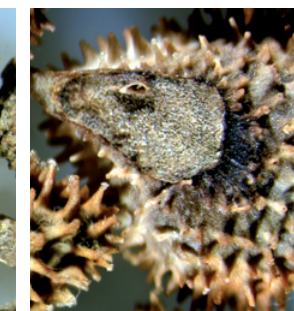
Address:
OGRÓD BOTANICZNY
ZARZĄD ZIELENI MIEJSKIEJ
ul. Krzemieniecka 36/38
94-303 Łódź
POLAND

Phone: +48 42 688 44 20
Fax: +48 42 688 44 14
E-mail: sekretariat@botaniczny.lodz.pl
www.botaniczny.lodz.pl

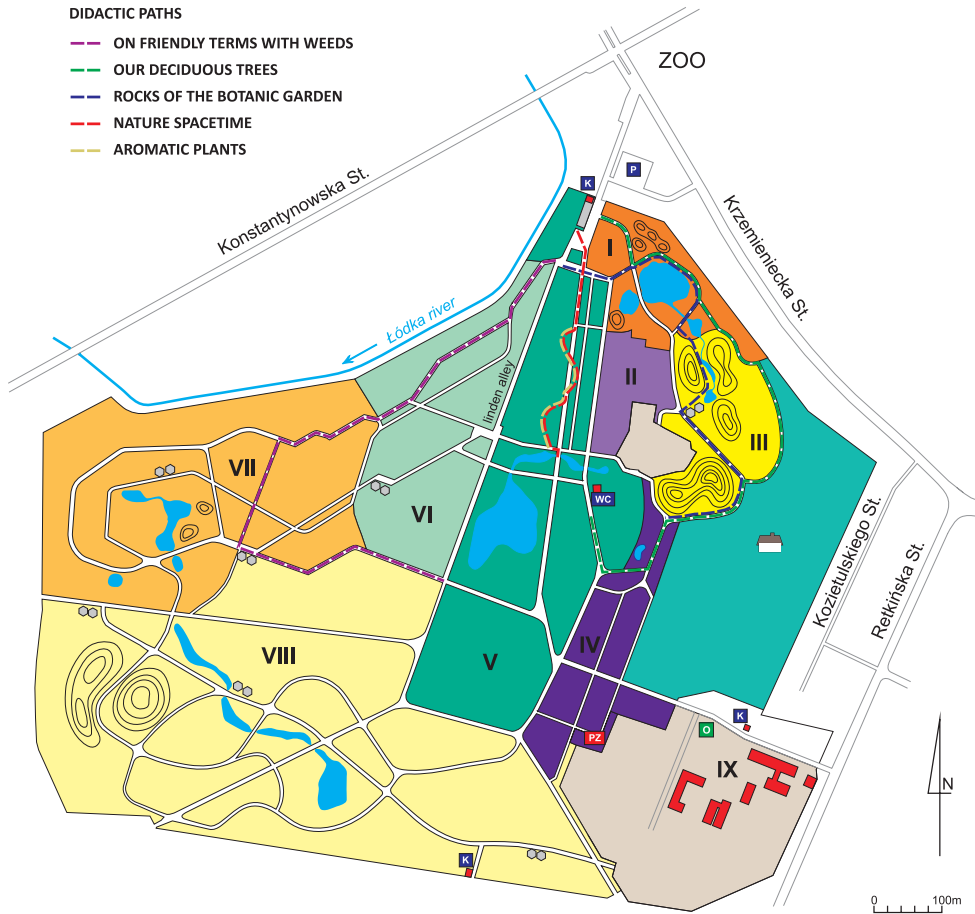
Hortus Botanicus Lodziensis
INDEX SEMINUM 2017

Head of the Botanic Garden in Lodz
dr Dorota Mańkowska

Curator of the seed collection
mgr Kamila Kolasińska
mgr Anna Bednarek



The Botanic Garden in Lodz



- I** JAPANESE GARDEN
- II** PLANT TAXONOMY SECTION
- III** ALPINE GARDEN
- IV** DECORATIVE PLANT SECTION
- V** PARK GREENERY
- VI** MEDICINAL PLANT SECTION
- VII** POLISH FLORA SECTION
- VIII** ARBORETUM
- IX** PRODUCTION, SOCIAL AND ADMINISTRATIVE FACILITIES

- MAIN ROADS
- WATERCOURSES AND PONDS
- HILLS
- BUILDINGS
- SHEDS
- PLACES FOR REST
- FIREPLACE
- TICKET OFFICE
- PARKING
- PLAYGROUND
- PLANT OPEN-AIR MUSEUM

Geographical location of the Botanic Garden:

Latitude: 51°44'30" N

Longitude: 19°24'30" E

Altitude: 187 m above sea level

Garden area: 67 ha



Climatic data:

Meteorological data for the period 1996 to 2015	Date
Annual average air temperature: +8,7°C	
Maximum air temperature: +37,6°C	01.08.1994
Minimum air temperature: -30,2°C	23.01.2006
Average annual precipitation: 587,2 mm	

Meteorological data for 2016	Date
Annual average air temperature: +9,3°C	
Maximum air temperature: +34,5°C	25.06.2016
Minimum air temperature: -16,3°C	04.01.2016
Annual precipitation: 750,9 mm	

The climatic data taken from the meteorological station Lodz-Lublinek from the Institute of Meteorology and Water Management (IMGW).

The Botanic Garden in Lodz is located in the western part of the city and covers an area of 67 hectares. The garden was opened to the public in 1973. The Garden's plant collection consist of about 3500 taxa which are exhibited in the thematic sections: japanese garden, plant taxonomy section, alpine garden, decorative plant section, park greenery, medicinal plant section, polish flora section and arboretum. The biggest attraction of the Garden are: a collection of 50 000 tulips forming in late april picturesque carpet, a collection of peonies and daylilies represented by many varieties, collection of medicinal plants, lilacs, hydrangeas, ornamental apple trees and many others. In the Garden there are several educational paths which allow visitors to explore the mysteries of nature. The new attraction of the Botanic Garden is The Open-air Plant Museum with traditional rural garden and orchard.

The Botanic Garden has also an interesting collection of greenhouse plants (2170 taxa), which is presented in the Palm House. There are three pavilions: subtropical flora, cacti and other succulents and tropical flora with ,the oldest in Poland, palm trees. The integral part of the Palm House is a Didactic Garden which has a lot of plant rarities, especially shrubs and trees.

Primarily the Garden performs didactic functions, popularizes horticultural, botanic and ecological knowledge and plays the social role. Garden staff conduct a variety of educational activities such as workshops, laboratory exercises and guided tours for children and adults. During each year there are more than 20 organized thematic exhibitions and outdoor events. A very important role of the Garden is also rare and endangered plant species conservation.



Digitalis purpurea L.



Tulips collection



Japanese garden in the autumn



Pulsatilla xhybrida



Koi carps in a garden pond in the Palm House

**Seeds collected from plants cultivated outdoors in the Botanic Garden in Lodz in 2017
(* - seeds collected in 2016, ** - seeds collected in 2015)**

ACANTHACEAE

1. *Acanthus hungaricus* (Borbas) Baen. **

ACERACEAE

2. *Acer campestre* L.*
3. *Acer griseum* (Franch.) Pax *
4. *Acer negundo* L.
5. *Acer platanoides* L.*
6. *Acer pseudoplatanus* L.*
7. *Acer tataricum* L.**

ALLIACEAE

8. *Allium cernuum* Roth *
9. *Allium pyrenaicum* Costa & Vayr. *
10. *Allium tibeticum* Rendle
11. *Allium tuberosum* Rottler ex Spreng.**
12. *Allium victorialis* L.

AMARANTHACEAE

13. *Amaranthus caudatus* 'Karmin' **
14. *Amaranthus caudatus* 'Nodoja' **
15. *Amaranthus paniculatus* 'Hot Biscuit' **
16. *Amaranthus tricolor* L.**

ANACARDIACEAE

17. *Cotinus coggygria* 'Royal Purple'
18. *Cotinus coggygria* 'Purpureus'
19. *Rhus typhina* L.**

ANTHERICACEAE

20. *Anthericum ramosum* L.

APIACEAE

21. *Anthriscus sylvestris* (L.) Hoffm.
22. *Astrantia major* 'Sunningdale Variegated' *
23. *Astrantia major* 'Venice' *
24. *Carum carvi* L.*
25. *Coriandrum sativum* L.
26. *Eryngium amethystinum* L.*
27. *Eryngium bourgatii* Gouan **
28. *Eryngium caeruleum* M.Bieb.
29. *Eryngium campestre* L.
30. *Eryngium caucasicum* Fisch. ex Steud.*
31. *Eryngium giganteum* M.Bieb.
32. *Foeniculum vulgare* Mill.
33. *Foeniculum vulgare* 'Purpureum' *
34. *Levisticum officinale* W.D.J. Koch
35. *Pastinaca sativa* L.
36. *Pimpinella saxifraga* L.**

AQUIFOLIACEAE

37. *Ilex aquifolium* L.

38. *Ilex laevigata* (Pursh) A.Gray

ARACEAE

39. *Arisaema amurense* Maxim. **
40. *Arisaema triphyllum* (L.) Schott *
41. *Arum italicum* 'Marmoratum' **

ARALIACEAE

42. *Eleutherococcus senticosus* (Rupr. ex Maxim.) Maxim. *
43. *Eleutherococcus sessiliflorus* (Rupr. ex Maxim.) S.Y.Hu *

ARISTOLOCHIACEAE

44. *Asarum caudatum* Lindl. *

ASCLEPIADACEAE

45. *Periploca sepium* Bunge *
46. *Vincetoxicum hirundinaria* Medik. *

ASTERACEAE

47. *Achillea clypeolata* Sibth. et Sm.
48. *Achillea filipendulina* 'Parker's Variety'
49. *Achillea macrophylla* L.
50. *Achillea millefolium* L.
51. *Achillea nobilis* L.
52. *Acmella oleracea* (L.) R.K. Jansen
53. *Anacyclus officinarum* Hayne **
54. *Anaphalis margaritacea* (L.) Benth. **
55. *Antennaria dioica* (L.) Gaertn. *
56. *Anthemis nobilis* L.*
57. *Arctium lappa* L.
58. *Arnica chamissonis* Less. *
59. *Artemisia absinthium* L.
60. *Artemisia vulgaris* L.
61. *Aster alpinus* 'Albus'
62. *Aster tibeticus* Hook. f. **
63. *Aster tongolensis* Franch. **
64. *Calendula officinalis* L.
65. *Centaurea dealbata* Willd.
66. *Centaurea dealbata* 'Steenbergii' *
67. *Centaurea macrocephala* Muss. Puschk. ex Willd.
68. *Centaurea montana* L.*
69. *Centaurea pulcherrima* Willd.
70. *Cichorium intybus* L.
71. *Cnicus benedictus* L.*
72. *Coreopsis grandiflora* 'Goldstrale' **
73. *Coreopsis grandiflora* 'Sunray'
74. *Coreopsis lanceolata* L.
75. *Coreopsis palmata* Nutt. *
76. *Coreopsis pubescens* Elliott

77. *Coreopsis verticillata* ‘Grandiflora’ **
 78. *Cynara cardunculus* L.
 79. *Echinacea purpurea* (L.) Moench
 80. *Echinops horridus* Desf. **
 81. *Echinops ritro* L.
 82. *Echinops sphaerocephalus* L. **
 83. *Erigeron alpinus* L. *
 84. *Erigeron caucasicus* subsp. *venustus* Grierson
 85. *Gaillardia aristata* Pursh
 86. *Grindelia squarrosa* (Pursh) Dunal
 87. *Helianthus helianthoides* var. *scabra*
 88. *Heliopsis helianthoides* ‘Asahi’ *
 89. *Inula ensifolia* L. *
 90. *Inula helenium* L.
 91. *Inula royleana* DC. *
 92. *Leucanthemum* ‘Mount Kościuszko’ *
 93. *Liatris pycnostachya* Michx.
 94. *Liatris spicata* (L.) Willd.
 95. *Liatris spicata* var. *montana* A.Gray
 96. *Ligularia dentata* (A. Gray) H.Hara **
 97. *Ligularia dentata* ‘Desdemona’ **
 98. *Ligularia przewalskii* (Maxim.) Diels *
 99. *Ligularia stenocephala* (Maxim.) Matsum. et Koidz.
 100. *Ligularia veitchiana* (Hemsl.) Greenm.
 101. *Rhaponticum carthamoides* (Willd.) Iljin **
 102. *Rudbeckia laciniata* L. **
 103. *Rudbeckia laciniata* ‘Herbstonne’ **
 104. *Silphium perfoliatum* L.
 105. *Silybum marianum* (L.) Gaertn.
 106. *Solidago* ‘Strahlenkrone’ **
 107. *Solidago virgaurea* L.
 108. *Tanacetum parthenium* (L.) Sch.Bip.
 109. *Tanacetum vulgare* L.
 110. *Tragopogon pratensis* subsp. *orientalis* Čelak. **

BERBERIDACEAE

111. *Berberis aggregata* C.K.Schneid. *
 112. *Berberis julianae* C.K.Schneid. *
 113. *Berberis koreana* Palib.
 114. *Berberis thunbergii* ‘Atropurpurea’
 115. *Berberis vulgaris* L.
 116. *Mahonia aquifolium* (Pursh) Nutt. *

BETULACEAE

117. *Alnus glutinosa* (L.) Gaertn.
 118. *Alnus incana* (L.) Moench. *
 119. *Alnus rugosa* (Du Roi) Spreng. *
 120. *Betula alleghaniensis* Britton *
 121. *Betula fruticosa* Pall.
 122. *Betula pendula* Roth *

BIGNONIACEAE

123. *Catalpa bignonioides* Walter
 124. *Catalpa fargesii* fo. *duclouxii* (Dode) Gilmour
 125. *Catalpa xerubescens* Carrière
 126. *Catalpa ovata* G.Don *
 127. *Catalpa speciosa* Warder ex Engelm.

BORAGINACEAE

128. *Anchusa officinalis* L.
 129. *Borago officinalis* L.
 130. *Echium vulgare* L. *
 131. *Phacelia tanacetifolia* Benth.

BRASSICACEAE

132. *Alyssum argenteum* All.
 133. *Alyssum armenum* Boiss.
 134. *Alyssum montanum* L. **
 135. *Aurinaria saxatilis* (L.) Desv.
 136. *Berteroa incana* (L.) DC. **
 137. *Iberis sempervirens* L. **
 138. *Isatis tinctoria* L.

CAESALPINIACEAE

139. *Cercis siliquastrum* L. *
 140. *Gleditsia triacanthos* L. *
 141. *Gleditsia triacanthos* var. *inermis* Willd.
 142. *Gymnocladus dioica* (L.) K.Koch **

CAMPANULACEAE

143. *Campanula alliariifolia* Willd. *
 144. *Campanula persicifolia* L.
 145. *Campsis radicans* (L.) Bureau
 146. *Codonopsis lanceolata* (Siebold et Zucc.) Trautv. *
 147. *Codonopsis pilosula* (Franch.) Nannf. *
 148. *Platycodon grandiflorus* (Jacq.) A.DC.
 149. *Platycodon grandiflorus* ‘Albus’ *

CANNABACEAE

150. *Humulus lupulus* L. *

CAPRIFOLIACEAE

151. *Kolkwitzia amabilis* Graebn.
 152. *Lonicera alpigena* L.
 153. *Lonicera ferдинandii* Franch.**
 154. *Lonicera henryi* Hemsl. **
 155. *Lonicera maackii* (Rupr.) Maxim. *
 156. *Lonicera vesicaria* Kom.
 157. *Lonicera xylosteum* L. **
 158. *Sambucus nigra* L.
 159. *Sambucus nigra* ‘Laciniata’ **
 160. *Viburnum dilatatum* Thunb. *
 161. *Viburnum edule* (Michx.) Raf.
 162. *Viburnum lantana* L.

163. *Viburnum opulus* L.
 164. *Viburnum opulus* ‘Xanthocarpum’
 165. *Viburnum rhytidophyllum* Hemsl.
 166. *Viburnum sargentii* Koehne *

CARYOPHYLLACEAE

167. *Saponaria officinalis* L. *

CELASTRACEAE

168. *Celastrus orbiculatus* Thunb.
 169. *Euonymus europaeus* L.
 170. *Euonymus hamiltonianus* Wall.
 171. *Euonymus macropterus* Rupr.
 172. *Euonymus nanus* M.Bieb.
 173. *Euonymus sacrosanctus* Koidz.

CISTACEAE

174. *Helianthemum* ‘Fire Dragon’ *
 175. *Helianthemum* ‘Sterntaler’

CLUSIACEAE

176. *Hypericum olympicum* L. **
 177. *Hypericum perforatum* L.

CONVALLARIACEAE

178. *Convallaria majalis* L. **

CORNACEAE

179. *Cornus alba* L. **
 180. *Cornus amomum* Mill.
 181. *Cornus kousa* var. *chinensis* (Osborn) Q.Y.Xiang
 182. *Cornus mas* L.
 183. *Cornus mas* ‘Florianka’
 184. *Cornus mas* ‘Golden Glory’
 185. *Cornus mas* ‘Jolico’
 186. *Cornus mas* ‘Kotula’
 187. *Cornus mas* ‘Pyramidalis’
 188. *Cornus mas* ‘Schonbrunner Gourmet-Dindl’
 189. *Cornus mas* ‘Swietlana’
 190. *Cornus mas* fo. *sphaerocarpa* L.
 191. *Cornus sanguinea* L.

CORYLACEAE

192. *Carpinus betulus* L. *
 193. *Carpinus betulus* ‘Pendula’ *
 194. *Carpinus caroliniana* Walter *
 195. *Carpinus japonica* Blume
 196. *Ostrya carpinifolia* Scop.

CRASSULACEAE

197. *Chiastophyllum oppositifolium* (Ledeb. ex Nordm.) Berger **
 198. *Rhodiola rosea* L. **

199. *Sedum kamtschaticum* subsp. *ellacombeanum* (Praeger) R.T. Clausen **
 200. *Sedum seleskianum* Regel et Maack *
 201. *Sedum spurium* M.Bieb. **

CUCURBITACEAE

202. *Bryonia dioica* Jacq.
 203. *Cucurbita maxima* Duch. **
 204. *Cucurbita maxima* ‘Otylia F1’ *

CUPRESSACEAE

205. *Calocedrus decurrens* (Torr.) Florin *
 206. *Chamaecyparis lawsoniana* (A.Murray bis) Parl.T *
 207. *Juniperus communis* L.
 208. *Juniperus sabina* L.
 209. *Platycladus orientalis* (L.) Franco
 210. *Thuja occidentalis* L.
 211. *Thuja plicata* Donn ex D.Don
 212. *Thujopsis dolabrata* (Thunb. ex L.f.) Siebold et Zucc. *

CYPERACEAE

213. *Carex grayi* J.Carey **
 214. *Carex muskingumensis* Schweinf. **
 215. *Schoenoplectus lacustris* (L.) Palla **

DIPSACACEAE

216. *Dipsacus sativus* (L.) Honck. *
 217. *Scabiosa japonica* var. *alpina* Takeda *
 218. *Scabiosa pyrenaica* All.

ELAEAGNACEAE

219. *Elaeagnus angustifolia* L. *
 220. *Elaeagnus umbellata* Thunb. **

ERICACEAE

221. *Vaccinium oxycoccos* L. *
 222. *Vaccinium uliginosum* L. *

EUCOMIACEAE

223. *Eucommia ulmoides* Oliv. *

EUPHORBIACEAE

224. *Euphorbia lathyris* L. *
 225. *Ricinus communis* L.
 226. *Securinega suffruticosa* (Pall.) Rehder

FABACEAE

227. *Amorpha canescens* Pursh **
 228. *Amorpha fruticosa* L. **
 229. *Anthyllis alpestris* Kit. ex Schult. **
 230. *Anthyllis montana* L. **
 231. *Cytisus scoparius* (L.) Link. **
 232. *Desmodium canadense* (L.) DC. *

233. Galega officinalis L.
234. Genista tinctoria L.
235. Glycyrrhiza glabra L.
236. Laburnum alpinum (Mill.) Berchtold et J.Presl **

237. Laburnum anagyroides Medik. *
238. Laburnum xwatereri (G.Kirchn.) Dippel **
239. Melilotus officinalis (L.) Pall. **
240. Ononis spinosa L.
241. Robinia pseudoacacia L. *
242. Robinia pseudoacacia 'Unifoliola' *
243. Thermopsis montana Nutt. **
244. Trigonella foenum-graecum L. **
245. Wisteria floribunda (Willd.) DC. *

FAGACEAE

246. Castanea sativa Mill.
247. Fagus sylvatica L.
248. Fagus sylvatica 'Incisa' *
249. Quercus cerris L. *
250. Quercus robur L.
251. Quercus rubra L.

GENTIANACEAE

252. Gentiana septemfida Pall. *
253. Gentiana tibetica King ex Hook.f. *

GERANIACEAE

254. Geranium pratense 'Galactic'`
255. Geranium sanguineum L. **

GLOBULARIACEAE

256. Globularia repens Lam.

HIPPOCASTANACEAE

257. Aesculus flava Sol. *
258. Aesculus xhybrida DC. **
259. Aesculus glabra Willd.
260. Aesculus hippocastanum L. *
261. Aesculus turbinata Blume *

HYACINTHACEAE

262. Eucomis bicolor L'Hér. *
263. Muscari botryoides (L.) Mill. **

HYDRANGEACEAE

264. Deutzia scabra Thunb. **

IRIDACEAE

265. Iris versicolor L. **
266. Sisyrinchium angustifolium Mill. **

JUGLANDACEAE

267. Juglans ailantifolia Carrière **
268. Pterocarya fraxinifolia Spach *

269. Pterocarya stenoptera C.DC.

JUNCEAE

270. Luzula sylvatica (Huds.) Gaudin

LAMIACEAE

271. Agastache rugosa (Fisch. et C.A.Mey.) Kuntze
272. Agastache rugosa 'Alabaster' *
273. Agastache rugosa 'Golden Jubilee' *
274. Agastache rugosa 'Raspberry Summer' *
275. Ballota nigra L. *
276. Betonica officinalis L.
277. Hyssopus officinalis L.
278. Hyssopus officinalis 'Albus' *
279. Lavandula angustifolia Mill.
280. Lavandula angustifolia 'Dwarf Blue' **
281. Lavandula angustifolia 'Hidcote' *
282. Leonurus cardiaca L.
283. Melissa officinalis L. **
284. Mentha longifolia (L.) Huds. **
285. Monarda bradburiana L.C. Beck **
286. Nepeta cataria L.
287. Nepeta nervosa Royle ex Benth. **
288. Ocimum basilicum 'Citrodorum' *
289. Origanum vulgare L. *
290. Physostegia virginiana 'Summer Snow'
291. Prunella xwebbiana Paul
292. Prunella grandiflora (L.) Scholler *
293. Prunella grandiflora 'Alba'
294. Prunella hyssopifolia L. **
295. Prunella vulgaris L.
296. Salvia nemorosa L.
297. Salvia nemorosa 'Ostfriesland' *
298. Salvia officinalis L.
299. Salvia pratensis L. **
300. Salvia sclarea L.
301. Salvia verticillata L. *
302. Satureja hortensis L.
303. Satureja montana L.
304. Scutellaria baicalensis Georgi
305. Stachys byzantina K.Koch *
306. Stachys germanica L. **
307. Stachys grandiflora (Stev. et Willd.) Benth. *
308. Teucrium chamaedrys L. *
309. Teucrium scorodonia L. **
310. Thymus pulegioides L. **

LARDIZABALACEAE

311. Decaisnea fargesii Franch. *

LINACEAE

312. Linum perenne L. *
313. Linum usitatissimum L.

LYTHRACEAE

314. Lythrum salicaria L.

MAGNOLIACEAE

315. Liriodendron tulipifera L. *
316. Magnolia kobus DC. *

MALVACEAE

317. Alcea rosea 'Nigra'
318. Althaea officinalis L.
319. Malva neglecta Wallr.
320. Sida hermaphrodita (L.) Rusby **

MORACEAE

321. Maclura pomifera (Raf.) C.K.Schneid.

MYRICACEAE

322. Myrica pensylvanica Mirb.

NYCTAGINACEAE

323. Mirabilis jalapa L.

OLEACEAE

324. Fontanesia phillyreoides subsp. fortunei (Carrière) Yalt.
325. Fraxinus excelsior L.
326. Fraxinus excelsior 'Pendula' *
327. Fraxinus ornus L. **
328. Jasminum nudiflorum Lindl. *
329. Ligustrum obtusifolium Siebold et Zucc.
330. Ligustrum obtusifolium var. regelianum Rehder *
331. Ligustrum vulgare L.
332. Ligustrum vulgare 'Chlorocarpum'

ONAGRACEAE

333. Chamaenerion angustifolium (L.) Scop.
334. Oenothera biennis L.

OSMUNDACEAE

335. Osmunda regalis L. **
336. Osmunda regalis 'Purpurascens' **

PAPAVERACEAE

337. Chelidonium majus L. **
338. Glaucium flavum Crantz
339. Macleaya cordata (Willd.) R.Br.
340. Papaver atlanticum (Ball) Coss.
341. Papaver lapponicum (Tolm.) Nordh.
342. Papaver orientale L. **
343. Papaver orientale 'Princess Victoria Louise'
344. Papaver rhoeas L.

PHYTOLACCACEAE

345. Phytolacca americana L.
346. Phytolacca polyandra Batalin **

PINACEAE

347. Abies koreana E.H.Wilson *
348. Abies nordmaniana 'Pendula' *
349. Larix decidua Mill.
350. Larix kaempferii (Lamb.) Carrière
351. Picea abies f. chlorocarpa Th.Fr.
352. Picea asperata Mast.
353. Picea mariana (Mill.) Britton, Sterns et Poggenb.
354. Picea omorika (Pančić) Purk. *
355. Picea orientalis Link.
356. Picea pungens Engelm.
357. Picea pungens 'Argentea' *
358. Pinus armandii Franch. *
359. Pinus contorta Douglas ex Loudon *
360. Pinus mugo Turra
361. Pinus nigra Arnold *
362. Pinus ponderosa Douglas ex Lawson et C.Lawson
363. Pinus sylvestris L.
364. Pinus wallichiana A.B.Jacks. *
365. Pseudotsuga menziesii var.glauca (Mayr) Franco *

PLANTAGINACEAE

366. Penstemon ovatus Douglas
367. Penstemon wilcoxii Rydb.
368. Plantago lanceolata L.
369. Plantago major L. *
370. Plantago major 'Purpurea'
371. Pseudolysimachion incanum (L.) Holub *

PLATANACEAE

372. Platanus xacerifolia (Aiton) Willd. **
373. Platanus occidentalis L. **
374. Platanus orientalis L. **

POACEAE

375. Coix lacryma-jobi L. *
376. Koeleria glauca (Schrad.) DC. *

POLEMONIACEAE

377. Polemonium caeruleum L.

POLYGONACEAE

378. Polygonum bistorta L. **
379. Rumex hydrolapathum Huds.

PRIMULACEAE

380. Androsace carnea L. **

381. Dodecatheon meadia L. *
 382. Lysimachia vulgaris L. *
 383. Primula denticulata Sm. **
 384. Primula elatior subsp. Ruprechtii
 385. Primula veris L. **

RANUNCULACEAE

386. Actaea europaea (Schipcz.) J.Compton
 387. Actaea pachypoda 'Misty Blue' *
 388. Actaea racemosa L.
 389. Actaea spicata L. **
 390. Anemone sylvestris 'Macrantha'
 391. Aquilegia alpina L.
 392. Aquilegia 'Nora Barlow'
 393. Aquilegia vulgaris 'Clementine Blue'
 394. Aquilegia vulgaris 'Winky white'
 395. Aquilegia vulgaris 'Woodside Gold' *
 396. Clematis alpina (L.) Mill *
 397. Clematis mandschurica Rupr. *
 398. Clematis recta L. *
 399. Clematis vitalba L.
 400. Consolida regalis Gray
 401. Delphinium x cultorum
 402. Eranthis hyemalis (L.) Salisb. **
 403. Helleborus niger L.
 404. Helleborus orientalis Lam. **
 405. Nigella sativa L.
 406. Pulsatilla vulgaris Mill. *
 407. Pulsatilla vulgaris 'Rubra'
 408. Thalictrum alpinum L. *
 409. Thalictrum diptercarpum Franch. *
 410. Trollius europaeus L.

RHAMNACEAE

411. Frangula alnus L. *
 412. Rhamnus cathartica L.

ROSACEAE

413. Agrimonia eupatoria L.
 414. Alchemilla plicatula Gand.
 415. Alchemilla xanthochlora Rothm.
 416. Amelanchier ovalis Medik. **
 417. Aronia melanocarpa (Michx.) Elliott
 418. Chaenomeles japonica (Thunb.) Lindl.
 419. Chaenomeles japonica 'Cido' *
 420. Chaenomeles speciosa (Sweet) Nakai
 421. Chaenomeles speciosa 'Nivalis' *
 422. Chaenomeles xsuperba 'Vesuvius'
 423. Cotoneaster acutifolius Turcz. *
 424. Cotoneaster amoenus E.H.Wilson **
 425. Cotoneaster boisianus Klotz *
 426. Cotoneaster bullatus Bois
 427. Cotoneaster buxifolius Wall. ex Lindl.
 428. Cotoneaster dammeri C.K.Schneid.
 429. Cotoneaster dielsianus E.Pritz. ex Diels

430. Cotoneaster foveolatus Rehder et E.H.Wilson
 431. Cotoneaster franchetii Bois
 432. Cotoneaster giraldii Flinck et B. Hylmö et G. Klotz *
 433. Cotoneaster hissaricus Pojark. *
 434. Cotoneaster hjelmqvistii Flinck et B.Hylmö
 435. Cotoneaster horizontalis Decne.
 436. Cotoneaster horizontalis 'Wilsonii' *
 437. Cotoneaster lucidus Schldtl.
 438. Cotoneaster microphyllus Wall. ex Lindl. *
 439. Cotoneaster nanshan Mottet
 440. Cotoneaster niger (Wahlb.) Fr. *
 441. Cotoneaster rehderi Pojark. *
 442. Cotoneaster salicifolius Franch. **
 443. Cotoneaster simonsii Baker *
 444. Cotoneaster splendens Flinck et Hylmö
 445. Cotoneaster turcomanicus Pojark. *
 446. Cotoneaster 'Ursynów'
 447. Cotoneaster wardii W.W.Sm. *
 448. Cotoneaster zabelii C.K.Schneid.
 449. Crataegus coccinea L. *
 450. Crataegus crus-galli L.
 451. Crataegus intricata Lange
 452. Crataegus laevigata (Poir.) DC.
 453. Crataegus monogyna Jacq.
 454. Crataegus punctata 'Aurea' *
 455. Crataegus sanguinea Pall.
 456. Cydonia oblonga Mill.
 457. Dryas octopetala L.
 458. Exochorda giraldii Hesse **
 459. Exochorda korolkowii Lavallée
 460. Filipendula ulmaria (L.) Maxim.
 461. Filipendula vulgaris Moench
 462. Geum rivale L.
 463. Geum triflorum Pursh *
 464. Geum urbanum L.
 465. Malus glaucescens Rehder
 466. Malus toringo var. sargentii C.K.Schneid.
 467. Malus 'Żelazowa Wola'
 468. Photinia villosa (Thunb.) DC.
 469. Physocarpus opulifolius (L.) Maxim.
 470. Physocarpus opulifolius 'Diabolo'
 471. Physocarpus opulifolius 'Luteus'
 472. Potentilla alba L. **
 473. Potentilla erecta (L.) Raeusch.
 474. Potentilla fulgens Wall. ex Hook. **
 475. Potentilla gracilis Douglas ex Hook. **
 476. Potentilla rupestris L. *
 477. Potentilla rupestris var. pygmaea Duby *
 478. Prinsepia sinensis (Oliv.) Oliv. ex Bean *
 479. Prinsepia uniflora Batalin
 480. Prunus spinosa L. **
 481. Pyracantha 'Deart's Daffodil'
 482. Pyracantha 'Orange Glow'

483. Pyracantha coccinea 'Lalandei'
 484. Pyracantha coccinea var. kuntayi
 485. Pyrus salicifolia Pall.
 486. Pyrus salicifolia 'Pendula' **
 487. Rhodotypos scandens (Thunb.) Makino
 488. Rosa agrestis Savi *
 489. Rosa amblyotis C.A. Mey. *
 490. Rosa arvensis Huds. *
 491. Rosa blanda Aiton *
 492. Rosa canina L.
 493. Rosa carolina L. *
 494. Rosa corymbifera Borkh. *
 495. Rosa davurica Pall. *
 496. Rosa dumalis Bechst. *
 497. Rosa filipes Rehder et E.H.Wilson *
 498. Rosa gallica L. *
 499. Rosa glauca Pourr.
 500. Rosa inodora Fr. *
 501. Rosa jundzillii Besser *
 502. Rosa majalis Herrm. **
 503. Rosa mollis Sm. *
 504. Rosa moschata Mill. *
 505. Rosa moyesii Hemsl. et E.H.Wilson
 506. Rosa multiflora 'Inermis' *
 507. Rosa nitida Willd. *
 508. Rosa nutkana Pall. *
 509. Rosa pimpinellifolia L.
 510. Rosa roxburghii Tratt.
 511. Rosa roxburghii var. hirtula Rehder et E.H. Wilson
 512. Rosa rubiginosa L.
 513. Rosa rugosa Thunb.
 514. Rosa rugosa 'Alba' *
 515. Rosa sempervirens L. **
 516. Rosa setigera Michx. *
 517. Rosa sherardii Davies *
 518. Rosa stylosa Desv. *
 519. Rosa virginiana Mill. *
 520. Rosa woodsii Lindl. *
 521. Sanguisorba officinalis L.
 522. Sorbus xarnoldiana 'Golden Wonder'
 523. Sorbus discolor (Maxim.) Maxim. *
 524. Sorbus domestica L.
 525. Sorbus koehneana C.K.Schneid.
 526. Sorbus 'Pink Veil'
 527. Waldsteinia geoides Willd. **

RUBIACEAE

528. Asperula cynanchica L. *
 529. Cephalanthus occidentalis L. *

RUTACEAE

530. Phellodendron amurense Rupr. *
 531. Ptelea trifoliata L.
 532. Ruta graveolens L. *

SAXIFRAGACEAE

533. Heuchera chlorantha Piper
 534. Heuchera cylindrica Dougl. ex Hook.
 535. Heuchera micrantha var. diversifolia (Rydb.) Rosend., Butters et Lakela
 536. Heuchera richardsonii R.Br.
 537. Heuchera villosa Michx. *
 538. Mitella caulescens Nutt. **
 539. Mitella ovalis Greene
 540. Tiarella cordifolia L.

SCHISANDRACEAE

541. Schisandra chinensis (Turcz.) Baill. **

SCROPHULARIACEAE

542. Digitalis grandiflora Mill.
 543. Digitalis lanata Ehrh.
 544. Digitalis lutea L.
 545. Digitalis purpurea L.
 546. Paulownia tomentosa (Thunb.) Steud. **
 547. Scrophularia nodosa L. *
 548. Verbascum bombyciferum Boiss. *
 549. Verbascum thapsus L.
 550. Veronica austriaca 'Royal Blue' *
 551. Veronica caucasica M.Bieb. *
 552. Veronica longifolia L. *
 553. Veronica spicata 'Nana'
 554. Veronica spicata subsp. incana (L.) Walters *

SOLANACEAE

555. Datura stramonium L.
 556. Hyoscyamus niger L. *
 557. Nicandra physalodes (L.) Gaertn. **
 558. Nicotiana glauca Link et Otto
 559. Nicotiana glauca M.Bieb. *
 560. Physalis alkekengi L.
 561. Physalis alkekengi var. franchetii (Mast.) Mak. *
 562. Solanum dulcamara L. *
 563. Halesia monticola (Rehder) Sarg. *

TAXODIACEAE

564. Taxus baccata 'Elegantissima'
 565. Taxus cuspidata Siebold & Zucc.

TILIACEAE

566. Tilia americana 'Macrophylla' *
 567. Tilia cordata Mill.
 568. Tilia platyphyllos Scop. *

TROPAEOLACEAE

569. Tropaeolum majus L.

ULMACEAE

570. Celtis australis L.

571. *Celtis glabrata* Steven ex Planch. *
 572. *Celtis occidentalis* L. *

URTICACEAE

573. *Parietaria officinalis* L. **

VALERIANACEAE

574. *Valeriana officinalis* L.

VERBENACEAE

575. *Callicarpa bodinieri* 'Profusion' **
 576. *Callicarpa japonica* Thunb. *
 577. *Verbena officinalis* L.

Cuttings from the greenhouses of the Botanic Garden

AMARYLLIDACEAE

581. *Eucharis grandiflora* Planch. et Linden

ANTHERICACEAE

582. *Chlorophytum comosum* (Thunb.) Jacques
 583. *Chlorophytum comosum* 'Variegatum'
 584. *Chlorophytum comosum* 'Vittatum'

ARACEAE

585. *Aglaonema* 'Pattaya Beauty'
 586. *Aglaonema commutatum* Schott
 587. *Aglaonema crispum* (Pitcher et Manda) Nicolson
 588. *Aglaonema modestum* Schott ex Engl.
 589. *Epipremnum pinnatum* (L.) Engl.
 590. *Monstera deliciosa* Liebm.
 591. *Monstera obliqua* Miq.
 592. *Philodendron cordatum* Kunth ex Schott
 593. *Philodendron erubescens* K.Koch et Augustin
 594. *Philodendron melanochrysum* Linden et André
 595. *Philodendron microstictum* Standl. et L.O.Williams
 596. *Philodendron panduriforme* (Kunth) Kunth
 597. *Philodendron pedatum* (Hook.) Kunth
 598. *Philodendron tripartitum* (Jacq.) Schott
 599. *Philodendron scandens* K.Koch et H.Sello
 600. *Philodendron scandens* fo. *micans* (Klotzsch ex Koch) G.S. Bunting
 601. *Philodendron scandens* subsp. *oxycardium* (Schott.) G.S.Bunting
 602. *Philodendron squamiferum* Poepp.
 603. *Rhaphidophora decursiva* (Roxb.) Schott
 604. *Syngonium angustatum* Schott
 605. *Syngonium angustatum* 'Albolineatum'
 606. *Syngonium podophyllum* Schott

VITACEAE

578. *Ampelopsis brevipedunculata* (Maxim.) Trautv.
 579. *Vitis riparia* Michx. *

WOODSIACEAE

580. *Onoclea sensibilis* L. **

607. *Syngonium wendlandii* Schott

ARALIACEAE

608. *Polyscias balfouriana* (Andre) L.H.Bailey

ASCLEPIADACEAE

609. *Ceropegia woodii* Schltr.
 610. *Hoya carnosa* (L.f.) R.Br.

ASPHODELACEAE

611. *Haworthia batesiana* Uitew.
 612. *Haworthia cooperi* Baker
 613. *Haworthia papillosa* Haw.
 614. *Haworthia planifolia* Haw.
 615. *Haworthia translucens* Haw.

ASPLENIACEAE

616. *Asplenium bulbiferum* G.Forst.
 617. *Asplenium viviparum* (L.f.) C. Presl

BEGONIACEAE

618. *Begonia* 'Cleopatra'
 619. *Begonia angularis* Raddi
 620. *Begonia bowerae* Ziesenh.
 621. *Begonia bowerae* var. *nigramarga* Ziesenh.
 622. *Begonia brevirimosa* subsp. *exotica* Tebbitt
 623. *Begonia convolvulacea* (Klotzsch) A.DC.
 624. *Begonia corallina* Carrière
 625. *Begonia corallina* 'Lucerna'
 626. *Begonia xcredneri* F.Haage et E.Schmidt
 627. *Begonia dietrichiana* Irmsch.
 628. *Begonia echinosepala* var. *elongatifolia* Irmsch.
 629. *Begonia egregia* N.E.Br.
 630. *Begonia epipsila* Brade
 631. *Begonia xerythrophylla* Héringcq
 632. *Begonia xerythrophylla* 'Helix'

633. *Begonia foliosa* Kunth
 634. *Begonia fuchsioides* Hook.
 635. *Begonia glabra* Aubl.
 636. *Begonia goegoensis* N.E. Br.
 637. *Begonia hispida* var. *cuttillifera* Irmsch.
 638. *Begonia xhoughtonii* hort.
 639. *Begonia hydrocotylifolia* Graham ex Klotzsch
 640. *Begonia incarnata* Link et Otto
 641. *Begonia limminghuana* Morren
 642. *Begonia listada* L.B.Sm. et Wasshs.
 643. *Begonia malabarica* Lam.
 644. *Begonia masoniana* Irmsch. ex Ziesenh.
 645. *Begonia metallica* W.G.Sm.
 646. *Begonia mollicaulis* Irmsch.
 647. *Begonia odorata* Willd.
 648. *Begonia peltata* A.DC.
 649. *Begonia serratifolia* Irmsch.
 650. *Begonia soli-mutata* L.B.Sm. et Wassh.
 651. *Begonia strigillosa* A.Dietr.
 652. *Begonia sulcata* Scheidw.
 653. *Begonia xthurstonii* hort. ex Kennedy
 654. *Begonia ulmifolia* Willd.
 655. *Begonia vitifolia* Schott

BROMELIACEAE

656. *Cryptanthus acaulis* (Lindl.) Beer
 657. *Cryptanthus bivittatus* (Hook.) Regel

COMMELINACEAE

658. *Callisia insignis* C.B.Clarke
 659. *Callisia multiflora* (M.Martens et Galeotti) Standl.
 660. *Callisia repens* (Jacq.) L.
 661. *Commelina somalensis* Chiov.
 662. *Cyanotis cristata* (L.) D.Don
 663. *Cyanotis kewensis* C.B.Clarke
 664. *Cyanotis somaliensis* C.B.Clarke
 665. *Geogenanthus undatus* (C.Koch et Linden) Mildbraed et Strauss
 666. *Gibasis geniculata* (Jacq.) Rohweder
 667. *Setcreasea purpurea* Boom.
 668. *Setcreasea striata* hort.
 669. *Siderasis fuscata* (Lodd.) H.E.Moore
 670. *Tradescantia albiflora* 'Albovitata'
 671. *Tradescantia blossfeldiana* Mildb.
 672. *Tradescantia crassula* Link et Otto
 673. *Tradescantia fluminensis* Vell.
 674. *Tradescantia multiflora* Sw.
 675. *Tradescantia navicularis* Ortgies
 676. *Tradescantia sillamontana* Matuda
 677. *Zebrina flocculosa* G.Brückn.
 678. *Zebrina pendula* Schnizl.

CRASSULACEAE

679. *Kalanchoe daigremontiana* Raym.-Hamet et H.Perrier
 680. *Kalanchoe tubiflora* Raym.-Hamet

DRACAENACEAE

681. *Sansevieria cylindrica* Bojer

EUPHORBIACEAE

682. *Pedilanthus tithymaloides* (L.) Poit.
 683. *Pedilanthus tithymaloides* 'Variegatus'

GESNERIACEAE

684. *Aeschynanthus acuminatus* Wall. ex A. DC.
 685. *Aeschynanthus marmoratus* T.Moore
 686. *Aeschynanthus radicans* Jack
 687. *Episcia cupreata* (Hook.) Hanst.
 688. *Episcia dianthiflora* H.E.Moore et R.G.Wils
 689. *Nematanthus strigillosus* (Mart.) H.E.Moore

MORACEAE

690. *Ficus* 'Moclame'
 691. *Ficus benghalensis* L.
 692. *Ficus benjamina* L.
 693. *Ficus benjamina* 'Eldorado'
 694. *Ficus benjamina* 'Rococo'
 695. *Ficus cyathistipula* Warb.
 696. *Ficus elastica* 'Melany'
 697. *Ficus microcarpa* L.
 698. *Ficus pumila* L.
 699. *Ficus sagittata* Vahl

PEPEROMIACEAE

700. *Peperomia boivinii* C.DC.
 701. *Peperomia caperata* Yunck.
 702. *Peperomia clusiifolia* (Jacq.) Hook.
 703. *Peperomia columbiana* Miq.
 704. *Peperomia flexicaulis* Wawra
 705. *Peperomia glabella* (Sw.) A.Dietr.
 706. *Peperomia hirta* C. DC.
 707. *Peperomia incana* (Haw.) A.Dietr.
 708. *Peperomia longispica* Trel.
 709. *Peperomia major* (Miq.) C.DC.
 710. *Peperomia marmorata* Hook.f.
 711. *Peperomia meridana* Yunck.
 712. *Peperomia metallica* Linden & Rodigas
 713. *Peperomia obtusifolia* (L.) A.Dietr.
 714. *Peperomia obtusifolia* 'Green Gold'
 715. *Peperomia obtusifolia* 'Variegata'
 716. *Peperomia orba* Bunt.
 717. *Peperomia pereskifolia* (Jacq.) Kunth
 718. *Peperomia quadrangularis* (J.V.Thomps.) A.Dietr.
 719. *Peperomia rubella* Hook.

720. *Peperomia sarcophylla* Sodiro
721. *Peperomia serpens* (Sw.) Loud.
722. *Peperomia serpens* 'Variegata'

URTICACEAE

723. *Pilea cadierei* Gagnep. & Guillaumin
724. *Pilea depressa* (Sw.) Blume
725. *Pilea herniarioides* (Sw.) Lindl.
726. *Pilea macrophylla* Rusby
727. *Pilea nummuzariifolia* (Sw.) Wedd.
728. *Pilea repens* (Sw.) (Sw.) Wedd.

VITACEAE

729. *Cissus antarctica* Vent.
730. *Cissus discolor* Blume
731. *Cissus hypoglauca* A. Gray
732. *Rhoicissus capensis* (Burm.f.) Planch
733. *Rhoicissus rhomboidea* (E.Mey. ex Harv.)
Planch.
734. *Tetrastigma voinieranum* Piere ex Pit.

Index Seminarium 2017 is also available on our website: www.botaniczny.lodz.pl

Nomenclature:

- Brummitt R.K., Powell C.E. ed. 1992. Authors of Plant Names. Royal Botanical Gardens, Kew.
- Bugała W. 2000. Drzewa i krzewy. PWRiL, Warszawa.
- Bugała W. 2000. Drzewa i krzewy iglaste. PWRiL, Warszawa.
- Gawryś W. 2008. Słownik roślin zielnych łacińsko-polski. Officina Botanica, Kraków.
- Grabowska B., Kubala T. 2011. Encyklopedia bylin. T. I,II. Zysk i S-ka, Poznań.
- Hoffman M.H.A. 2005. List of names of perennials. International standard ENA 2005-2010. Boskoop, Applied Plant Research, The Netherlands.
- Hoffman M.H.A. 2005. List of names of woody plants. International standard ENA 2005-2010. Boskoop, Applied Plant Research, The Netherlands.
- Krussmann G. 1955. Die Nadelgehölze. Paul Parey, Berlin-Hamburg.
- Krussmann G. 1960. Handbuch der Laubgehölze. Bd. I-II, Paul Parey, Berlin-Hamburg.
- Krussmann G. 1970. Winterharte Gartenstauden. Paul Parey, Berlin-Hamburg.
- Marcinkowski J. 2002. Byliny ogrodowe. PWRiL, Warszawa.
- Seneta W. 1981. Drzewa i krzewy liściaste. PWN, Warszawa.
- Seneta W. 1991. T I. Drzewa i krzewy liściaste. PWN, Warszawa.
- Seneta W. 1994. T II. Drzewa i krzewy liściaste. PWN, Warszawa.
- Seneta W. 1996. T III. Drzewa i krzewy liściaste. PWN, Warszawa.
- Seneta W., Dolatowski J. 1997. Dendrologia. PWN, Warszawa.
- Tutin T. G. ed. 1964-1976. Flora Europaea Vol. I-IV, Cambr. Univ. Press, Cambridge.
- www.tropicos.org.



DESIDERATA

Agreement on the supply of plant material

Since the Convention on Biological Diversity (Rio de Janeiro, 1992) entered into force, it has become necessary for botanic gardens to comply in particular with Article 15 (Access to genetic resources), especially in connection with the exchange of plant material.

Accordingly, the garden only passes on plant material under the condition that the user acts in the spirit of the Convention on Biological Diversity. The garden is dedicated to the conservation, sustainable use and research of biological diversity. With regard to the acquisition, maintenance and supply of plant material, the garden therefore expects its partners to act in a manner that is consistent to the letter and the spirit of the Biodiversity Convention on International Trade in Endangered Species (CITES) and in compliance with all relevant conventions and laws relating to the protection of Biological diversity.

Consequently, only those persons and institutions who accept the following conditions will receive plant material from garden's collection:

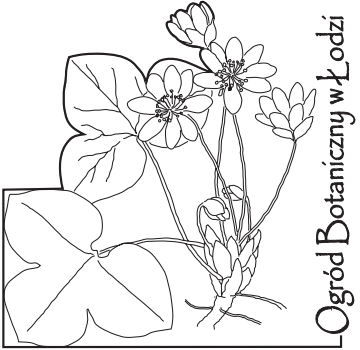
1. On the basis of this agreement, the material is intended to serve the common good, particularly scientific study, education and the interests of environmental protection.
2. Upon accepting plant material from the garden, the recipient is obliged to document and preserve information relating to the material appropriately.
3. In the event that scientific publications on the plant material provided are produced, the origin of the material is to be cited. In addition, these publications are expected to be sent to the garden automatically, without request.
4. Intended commercial use by the recipient is not covered by this agreement. The commercialization is the object of a separate agreement with the country of origin. This agreement underlies the provisions of the CBD, i. e. the user is obliged to share benefits with the country of origin and to forward relevant information to the authority instructed with the implementation of the CBD.
5. The garden will forward information on the material supply on the request to authority instructed with the implementation of the CBD¹.
6. Plant material may only be supplied on the basis and under the condition of this corresponding agreement.

_____ I accept the above conditions.

_____ **Date, Signature**

_____ **Name and address, stamp**

¹in the ideal case the National Focal Point of the country of Botanic Garden



**Ogród Botaniczny
Zarząd Zieleni Miejskiej
ul. Krzemieniecka 36/38
94-303 Łódź
Poland**

Phone: +48 42 688 44 20
Fax: +48 42 688 44 14
e-mail: sekretariat@botaniczny.lodz.pl
www.botaniczny.lodz.pl

Your address:

Please, limit Your order to 20 different seeds or cuttings.

Desiderata with the signed Agreement should be sent by post or by mail until 30st April 2018.