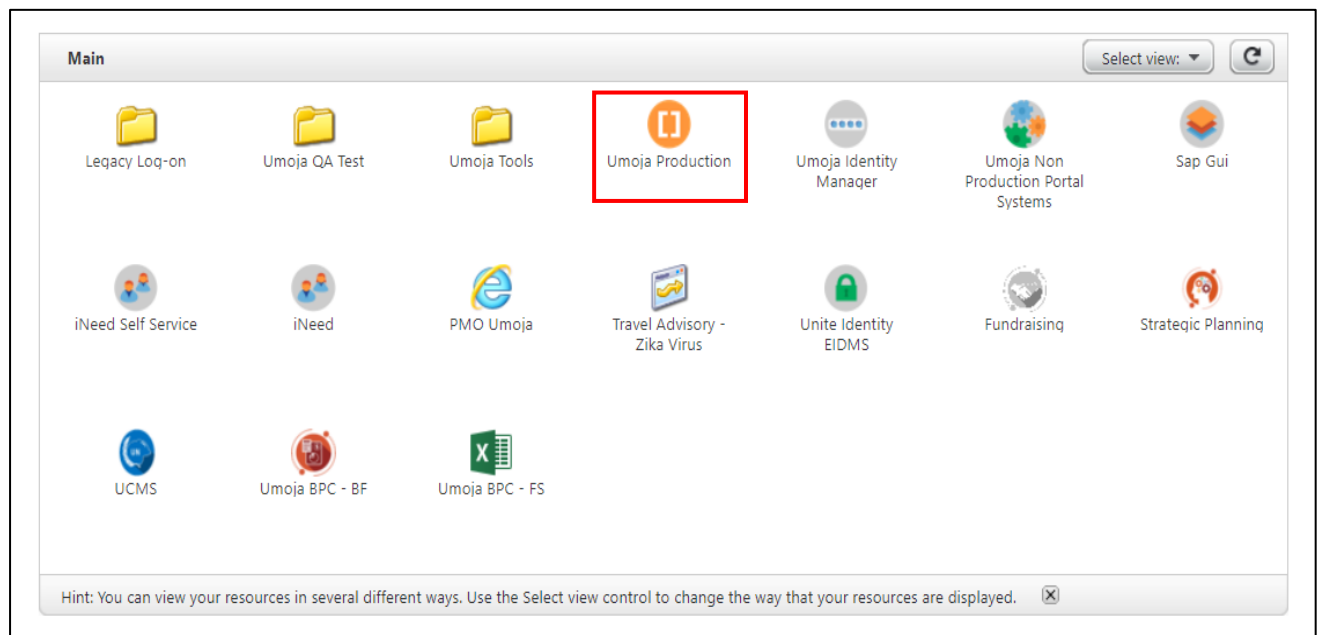


# Navigation to TM documents from ECC

**Objective:** These steps are for Navigation to TM documents from ECC . These will help Inbound Delivery Coordinators check Freight Unit/Freight Order directly from the inbound delivery.

1 Login to <https://login.umoja.un.org/> using your Unite ID

2 Click on 'Umoja Production'



3 Click on 'ECC'



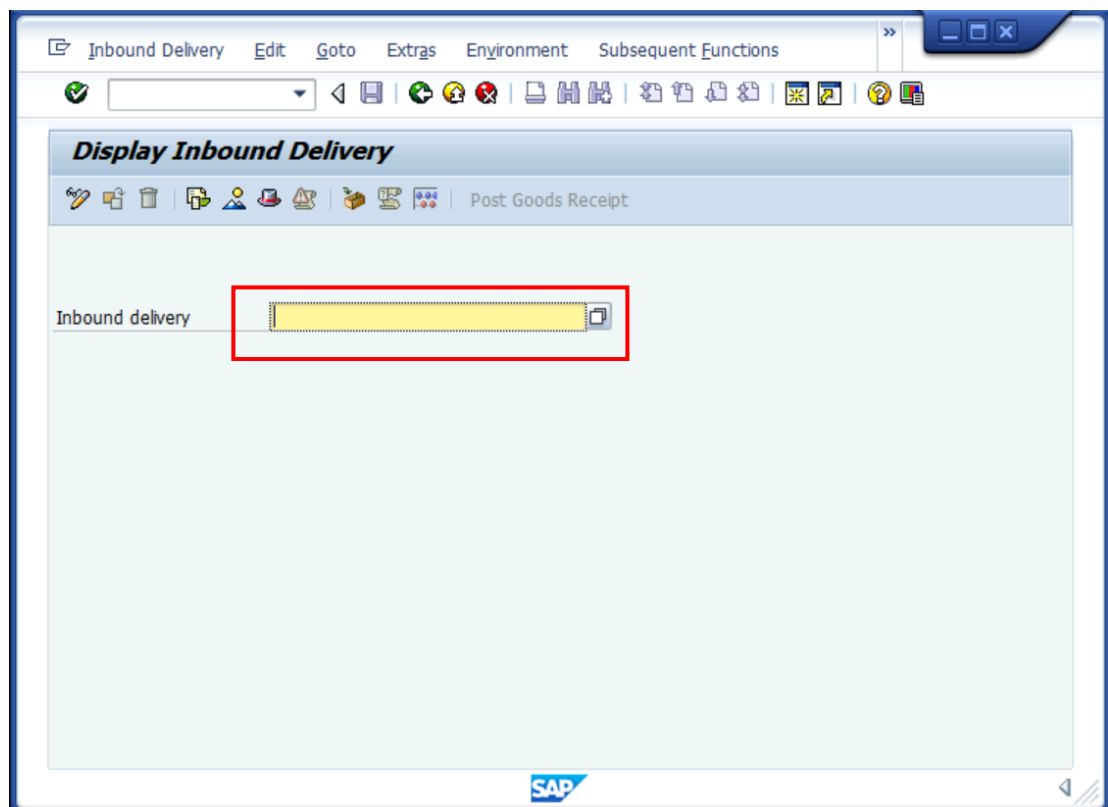
4

Enter the VL33N function



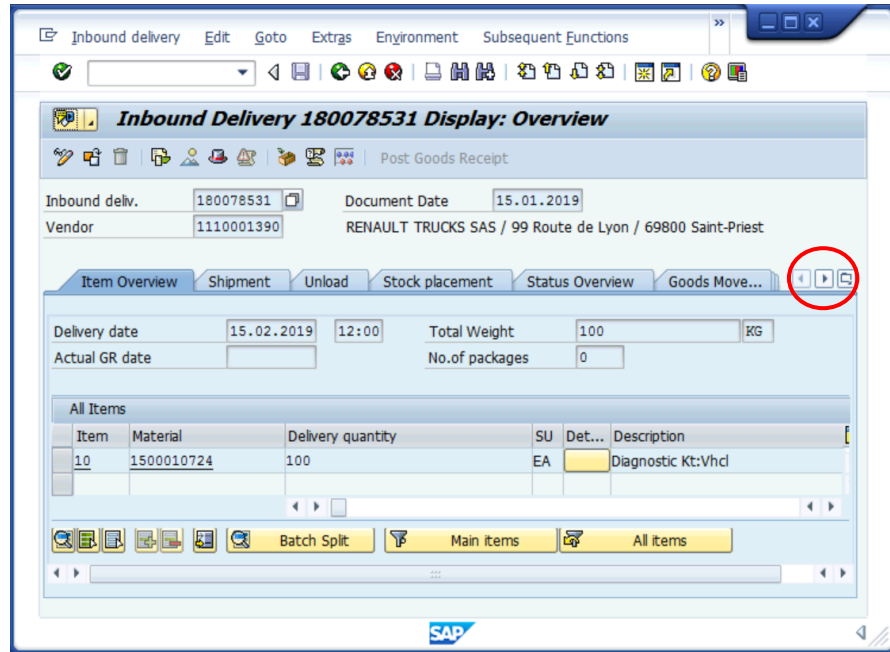
5

Enter your Inbound Delivery Number



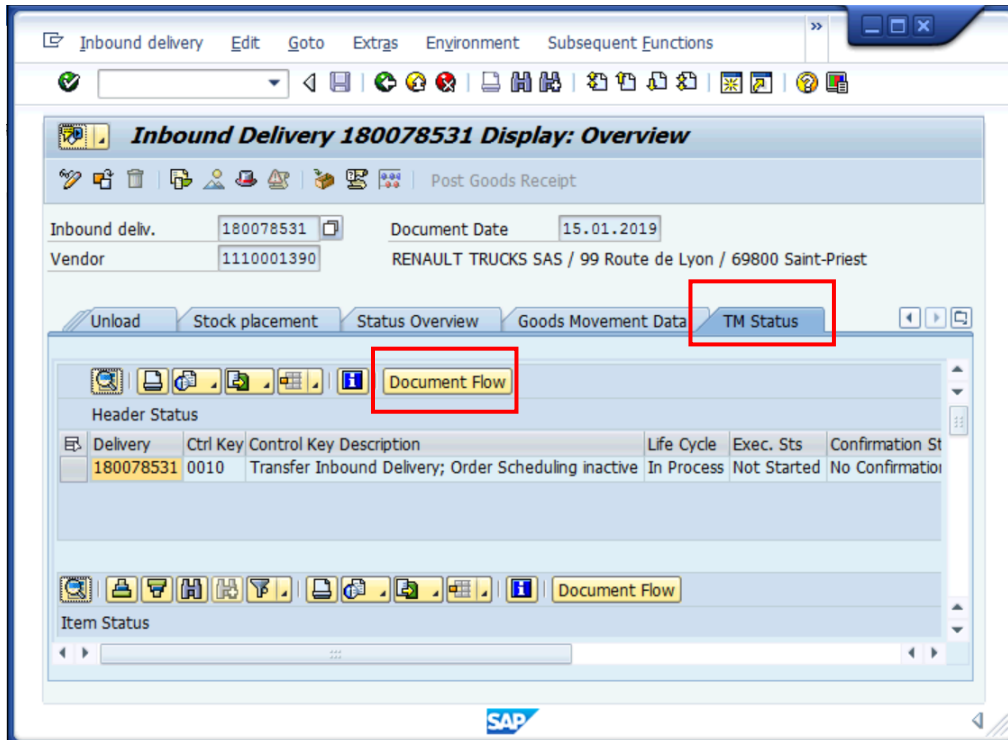
6

In the Inbound Delivery Overview, scroll to the left to find the TM Status Tab



7

Under the TM Status Tab, click on the 'Document Flow' yellow icon



8

Access the document in TM by clicking on the Hyperlinks under the BTID ID column

TM Document Flow for Delivery 180078531

Delivery: 180078531

Life Cycle Status: In Process  
 Execution Status: Not Started  
 Confirmation Status: No Confirmation Yet  
 Subcontracting Sts: Carrier Assigned

Tendering Status: \_\_\_\_\_  
 Invoicing Status: \_\_\_\_\_  
 Execution Block: Not Blocked  
 Planning Block: Not Blocked

ERP-TM Document Flow	ERP Doc	ERP Item	Schl Line	Quantity	Unit	Status	BTID ID	BTID Descr.	BTD Cat.	BTD Cat.
Inbound Delivery	180078531						<a href="#">180078531</a>	Inbound Delivery 180078531		
Delivery-Based Transportation Requirement	180078531						<a href="#">1100000061</a>	DTR for UNOE 1100000061 (Inbound Delivery 180078531) 02	Delivery-Based Transp	Product
Inbound Delivery Item	180078531	10		100	EA		<a href="#">1100000061</a>	DTR for UNOE 1100000061 (Inbound Delivery 180078531) 02		
Freight Unit	180078531	10					<a href="#">4100000256</a>	UNOE Planned Frt Unit 4100000256	FU	Freight Unit
Freight Order	180078531	10					<a href="#">6100010750</a>	UNOE Vendor Delivered Frt Order (VNDelv) 6100010750	TO	Freight Order

9

For example, if we click on the Freight Order document number, the below will pop open in TM

Display UNOE Vendor Delivered Frt Order (VNDelv) 6100010750 Business Context Viewer

Save Cancel Edit Refresh Copy Multiple Copies Check

General Data **Business Partner** Items Stages Utilization

Actions	Party Role	Business Partner	Origin of Entry	Devia... Address	Name
	Shipper	1110001390	Automatic Shippe...	<input type="checkbox"/>	RENAULT TRUCKS SAS
	Consignee	LB10	Automatic Shippe...	<input type="checkbox"/>	UN Interim Force in
	Carrier	1110001390	Manual Entry	<input type="checkbox"/>	RENAULT TRUCKS SAS
	Executing Carrier		Manual Entry	<input type="checkbox"/>	