

Andorra
Nurs.
1918

PRICE LIST
of
TREES · SHRUBS
PLANTS
and
EVERGREENS

SPRING
1918

ANDORRA NURSERIES

WM. WARNER HARPER, Proprietor

CHESTNUT HILL, PHILA., PA.

SUPERIOR FERTILIZERS

For the Lawn, Garden or Farm

PRICES ON APPLICATION

Net F. O. B. Shipping Point. Local delivery by truck or express at additional charge for hauling.

CANADA UNLEACHED HARD-WOOD ASHES

Are an active fertilizer, replenishing worn-out soils, and, for the lawn or pasture, are economical and valuable. For the lawn, they are easy to handle, and the chemical properties are at once available for plant food.

Apply at the rate of 1000 to 1500 lbs. per acre for top dressing, or 2000 to 2500 lbs. for new lawns.

Prices on application.

PREPARED LIME

Where soils are sour and need a fertilizer to sweeten them, lime is a valuable agent. It puts the soil in condition to assimilate plant food.

Our prepared lime is fresh from the kilns and especially prepared, so that it will go three times as far as lump lime. Use 500 lbs. per acre.

Prices on application.

PURE GROUND BONE

Used as a top dressing for the lawn at the rate of 1000 to 1500 lbs. to the acre—as a field or garden fertilizer at 3 to 4 tons per acre.
Grade A—Fine Ground

HUMUS. Bog-Peat

A splendid fertilizer. This air-dried Humus has been carefully prepared, screened fine so that it can be readily used for top dressing the lawn.

Use 1000 lbs. to the acre.

For top dressing lawns use 1000 lbs. to the acre.

For new lawns 5 to 10 tons per acre.

Prices on application.

“Upland” Humus—Fibrous Peat

A stock of carefully selected peat, suitable for planting or potting Rhododendrons and shrubs that need a peaty or fibrous soil.

Carload prices on application.

MANURE

Being large users of manure for our own Nurseries we are in a position at all times to command the market's best figures *in carload lots* on horse manure, cow manure, stock-yard manure.

Prices on application.

ANDORRA NURSERIES

ARE extensive, covering a thousand acres, of which over six hundred are planted with trees and shrubs. They are easy of access, as Chestnut Hill is the terminus of branches of the Pennsylvania Railroad (take train at Broad Street Station) and the Philadelphia and Reading Railroad (take train at the Terminal, 12th and Market Streets). At Chestnut Hill, take the Chestnut Hill (City Line) Trolley which runs to City Line, within three minutes' walk of the Nurseries.

QUALITY.—The trees and shrubs offered are grown in open, unsheltered ground, in very exposed situations, which insure their hardiness, and on soil admirably adapted for forming robust plants having an abundance of roots. Special attention is called to the fact that our stock is grown a good distance apart in the rows, insuring heavier trees and shrubs than are generally offered.

SHIPPING INSTRUCTIONS

ORDERS.—All orders are accepted subject to the following terms and conditions. Write plainly and give explicit directions as to address and mode of shipment.

SHIPPING SEASON opens about March 1 in the spring and August 15 in the fall.

INSPECTION AND FUMIGATION.—Our stock is regularly inspected and certificate will be sent with each shipment. Stock will be fumigated when requested or when the State laws require it.

FORWARDING.—Shipments will be forwarded exactly as directed; but when without instructions, we will use our best judgment and forward by shortest and safest route. We recommend all herbaceous plants be shipped by express.

RISK.—All goods are at purchaser's risk after they are delivered to the forwarding companies and we receive their receipt for the shipment in good condition.

CLAIMS for damage while in transit must be made to the delivering company. Have delivering agent note the damaged condition on the freight bill and present your claim through him promptly.

TERMS

PRICES in this list are for goods f. o. b. here, and are subject to change without notice.

STOCK SELECTED by customers at the Nurseries will be charged according to the value of the trees chosen.

QUANTITY.—Lots of 5 and 50 will be furnished at the 10 and 100 rates respectively.

PACKING.—All goods are thoroughly packed, thus avoiding risk, if delayed in transit. All packing charges are included in our list prices.

GUARANTEE AND CLAIMS.—All goods are guaranteed true to name, full count, up to grade, and in good condition when shipped. Any plant proving untrue to name will be replaced. Claims to receive consideration must be made within five days after receipt of goods. We give no guarantee of the life of stock.

TERMS, CASH WITH ORDER, except to persons who satisfy us as to their responsibility, when accounts will be due in 30 days.

Address all orders to

ANDORRA NURSERIES

WM. WARNER HARPER, Prop.

CHESTNUT HILL, PHILADELPHIA, PA.

Telegraphic Address
CHESTNUT HILL, PHILADELPHIA

Cable Address
"ANDORRA," PHILADELPHIA

TREES

OF

UNUSUAL CHARACTER AND SIZE

The individuality of a tree can never be expressed by any listing of height or breadth, nor do such figures indicate form or worth; the following notes are of rare pieces.

BOX BUSH. Specimens..... \$75 00 to \$500 00 Each

Grown and transplanted for many years in our nurseries, these rare old Box Bush range in height from four to seven feet, and to six feet in breadth. See also pages 19 and 21.

SPRUCE. Specimens 50 00 to 150 00 Each

The Oriental Spruce with its deep green foliage, and the popular Colorado Blue Spruce in sizes up to 15 feet in height, and in many cases of double the average breadth. See also pages 9 and 10.

RETINOSPORA. Specimens 75 00 to 250 00 Each

Over twenty years' growth is represented in many of these choice pieces which are trained into pyramid, broad pyramid, oval pyramid, and columnar shapes. Pieces of twelve to eighteen feet in height and of a breadth of four to ten feet according to the form. See also pages 12 and 13.

CEDARS. Specimens 15 00 to 25 00 Each

Our common Red Cedar and its types, the Blue Virginiana glauca and the dark green Virginiana Schotti, in heavily trimmed, nursery specimens with a weight of body and a denseness of branch and foliage that is unusual. See also pages 8 and 9.

PINES. Specimens 20 00 to 35 00 Each

Between ten and fourteen feet in height having a spread of from six to ten feet, and are furnished with fibrous roots insuring quick results. See also page 11.

ARBORVITAE.

In sizes up to eight to nine feet of the finest specimen character. The trees have been repeatedly transplanted, they lift with splendid roots and will carry a ball of soil for protection in transplanting. One of the most useful evergreens for hedges and for formal work of all kinds. It grows readily under trying conditions and should be more generally used.



Nursery Entrance and Office.

EVERGREEN TREES

For many years we have made a specialty of growing Evergreen Trees. Our Nursery soils are particularly well adapted to the formation of the fine fibrous feeding roots, and, at the same time; the soil is of such a consistency that our frequently transplanted trees, with their masses of fiber, retain the soil in compact balls when the trees are lifted for transplanting, and they do this without the soil packing hard as is often the case when evergreens are lifted from heavy clay land.

We want to especially emphasize the importance of the transplanted tree and the frequency with which our evergreens are transplanted in the Nursery. In no other way can the proper system of fibrous roots be obtained, and they are the all-important item when transplanting the trees you purchase, to secure a satisfactory growth.

	Each	10
ABIES cephalonica. 2 to 2½ ft.....	\$3 50	\$32 50
concolor. White Fir. 2 to 2½ ft.....	3 50	32 50
3 to 3½ ft.....	4 50	42 50
4 to 4½ ft.....	6 00	50 00
4½ to 5 ft.....	7 50	60 00
5½ to 6 ft.....	10 00	85 00
6 ft.	12 50	
7 to 9 ft.	\$15.00 to 20 00	

The White Fir is one of the finest and hardest trees of this class and in cold wind-swept positions stands perfectly. An unusually attractive tree.

Lasiocarpa var Arizona. Silver Cork Fir 5 ft..	\$10 00	
Nordmanniana. Nordmann's Fir. 2½ to 3 ft.....	3 50	32 50
3 to 3½ ft.	4 50	42 50
3½ to 4 ft.	6 00	57 50
4 to 4½ ft. Specimens.....	7 50	70 00
4½ to 5 ft. Specimens.....	10 00	85 00
* 5 to 5½ ft. Specimens.....	\$12 50 to 15 00	
* 6 to 16 ft. Fine specimens...*	\$20 to 150 00	

ALL GOODS F. O. B. HERE AT LIST PRICES

EVERGREEN TREES

	Each	10
BIOTA orientalis. Oriental Arborvitæ. 3½ to 4 ft.....	\$2 75	\$25 00
4 to 5 ft.	3 25	30 00
5 to 5½ ft.	4 00	37 50
5½ to 6 ft.	5 00	45 00
* 6 to 7 ft.	6 00	55 00
orientalis, var. aurea nana (Dwarf Golden).		
15 to 18 in.	1 50	13 50
20 to 22 in.	2 00	
22 to 24 in.	2 50	
28 to 32 in.	3 50	
32 to 36 in.	5 00	
orientalis, var. aurea pyramidalis		
5 to 6 ft.	4 50	42 50
6 to 7 ft.	\$5 to 7 50	
* 8 to 10 ft.	\$10.00 to 15 00	
orientalis, var. compacta. Compact Chinese Arborvitæ. 2 to 2½ ft.	3 00	27 50
3 to 3½ ft.	3 50	32 50
4 to 5 ft.	4 00	38 50
5 to 6 ft.	\$5.00 to 7 50	
* 6 to 7 ft.	* \$7.50 to 10 00	
orientalis, var. conspicua. (Columnar Form).		
2½ ft.	2 50	23 50
3½ to 4 ft.	3 00	28 50
5 to 6 ft.	4 00	37 50
6 to 7 ft.	7 50	70 00
* 8 to 10 ft.	* \$10 00 to 15 00	
orientalis, var. elegantissima. Rollinson's Golden Arbor-Vitæ. 2 to 2½ ft.	2 00	18 50
3 to 3½ ft.	2 50	23 50
6 to 7 ft.	7 50	72 50
* 7 to 9 ft. Specimens.....	\$10.00 to 15 00	
orientalis, var. semperaurescens. Ever-golden Arborvitæ. 2 to 2½ ft.	3 00	28 50
CEDRUS Atlantica, var. glauca. Mt. Atlas Silver Cedar—		
4 to 4½ ft.	3 50	32 50
5 to 6 ft. Specimens	5 00	47 50
* 7 to 8 ft. Specimens	7 50	70 00
* 9 to 10 ft. Specimens	\$15 to 20 00	
Lebani (Cedar of Lebanon). 3½ to 4 ft.	3 50	33 50
5 to 6 ft.	7 50	70 00
CRYPTOMERIA Japonica. Japanese Cedar.		
5 to 6 ft.	4 00	38 50
6 to 7 ft.	5 00	47 50
Japonica, var. Drachioides. 4 to 5 ft.	4 00	
6 to 7 ft.	7 50	
Japonica, var. Lobbi compacta.		
3 to 3½ ft.	2 50	22 50
4 to 4½ ft.	3 50	32 50
5 to 5½ ft.	5 00	48 50
* 6 to 10 ft.	* \$7.50 to 15 00	
ILEX opaca. (American Holly.) 2 to 2½ ft.	2 50	23 50
3 to 3½ ft.	3 50	
3½ to 4 ft.	\$5 to 7 50	

* LARGE SIZES FOR IMMEDIATE EFFECT

EVERGREEN TREES

	Each	10
JUNIPERUS chinensis. Chinese Juniper. 2½ to 3 ft.....	\$2 00	\$17 50
3½ to 4 ft.	3 50	32 50
4½ to 5 ft.	4 00	37 50
5 to 5½ ft.	5 00	45 00
6 to 7 ft.	7 50	72 50
* 7 to 8 ft.	10 00	90 00
* 8 to 9 ft.	\$15 to 25 00	
chinensis var. albo-variegata. 1½ to 2 ft.....	♦ 1 50	13 50
2½ to 3 ft.	♦ 3 50	32 50
3½ to 4 ft.	♦ 4 50	42 50
4 to 4½ ft.	♦ 5 00	47 50
5 to 6 ft.	♦ 6 00	57 50
* 7 to 8 ft.	♦ 15 00	
chinensis, var. aurea. Golden Chinese Juniper—		
5 to 5½ ft.	7 50	
chinensis, var. femina (Reevesii). 3 to 3½ ft.....	3 00	27 50
4 to 4½ ft.	4 00	37 50
* 5 to 6 ft.	6 00	55 00
* 6 to 8 ft.	\$7.50 to 15 00	
chinensis, var. Pfitzeriana. 1½ to 2 ft.....	2 50	20 00
2 to 2½ ft.	3 50	32 50
2½ to 3 ft.	4 00	37 50
3½ to 4 ft.	♦ 4 50	42 50
* 4 to 4½ ft.	♦ 5 00	48 50
* 5 to 6 ft.	♦ 10 00	90 00
chinensis, var. virginalis. Dwarf—		
12 to 15 in.	♦ 1 50	13 50
15 to 18 in.	♦ 2 50	22 50
chinensis, var. virginalis aurea. 1 ft.....	2 00	17 50
communis, Common Upright Juniper. ♦ 2 to 2½ ft. 2 00 17 50		
3½ to 4 ft.	♦ 3 00	28 50
4 to 4½ ft.	♦ 3 50	32 50
5 to 6 ft.	5 00	47 50
communis, var. depressa. Spreading Canadian Juniper—		
12 to 15 in. spread	1 00	8 50
15 to 18 in. spread	1 25	10 00
18 to 24 in. spread	1 50	12 50
communis, var. depressa aurea. (Golden Form)—		
12 to 15 in. spread	1 00	9 00
15 to 18 in. spread	1 50	12 50
18 to 24 in. spread. Heavy	2 00	15 00
* 24 to 30 in. spread. Heavy	2 50	22 50
communis, var. depressa plumosa. (Purple winter color)—		
12 to 15 in.	2 50	20 00
15 to 18 in.	3 00	25 00
communis, var. depressa. (Vase Type)—		
2 to 2½ ft.	♦ 2 50	23 50
4 to 4½ ft.	♦ 5 00	45 00
communis, var. Hibernica. Irish Juniper—		
2½ to 3 ft.	2 00	18 50
3½ to 4 ft.	2 50	23 50
4½ to 5 ft.	3 00	28 50
communis, var. horizontalis. Trailing Juniper—		
12 to 15 in.	♦ 1 50	13 50

ALL GOODS F. O. B. HERE AT LIST PRICES

EVERGREEN TREES

	Each	10
JUNIPERUS communis, var. Suecica. Swedish Juniper—		
2½ to 3 ft.	\$2 00	\$18 50
3½ to 4 ft.	2 75	25 00
4 to 4½ ft.	3 50	32 50
4½ to 5½ ft.	4 50	42 50
excelsa, var. stricta—		
1½ to 2 ft.	2 00	18 50
2 to 2½ ft.	3 50	32 50
3 to 3½ ft.	5 00	48 50
* 7 to 8 ft.	\$20 to 25 00	
Fortunei. 5 to 6 ft.	6 00	55 00
japonica. Japan Juniper—		
12 to 15 in.	2 00	18 50
15 to 18 in.	2 50	23 50
18 to 24 in.	3 50	32 50
24 to 30 in.	4 50	42 50
japonica, var. aurea. (Golden). 1½ to 2 ft.	1 50	13 50
2 to 2½ ft.	2 00	18 50
2½ to 3 ft.	3 00	28 50
* 3 to 3½ ft.	3 50	32 50
* 4 to 4½ ft.	5 00	48 50
japonica, var. nana aurea. Dwarf—		
1½ ft. broad	2 50	
macrocarpa, syn. Neaboriensis—		
4 to 5 ft.	4 00	37 50
5 to 6 ft.	5 00	48 50
pachyphlaea (silver foliage). 5 to 6 ft.	5 00	48 50
Sabina. Savin Juniper. 18 to 24 in.	1 50	13 50
2 to 2½ ft.	2 00	18 50
2½ to 3 ft.	2 50	23 50
3 to 3½ ft.	3 50	32 50
Sabina, var. cupressifolia (prostrate)—		
10 to 12 in.	1 75	16 00
Sabina, var. tamariscifolia—		
10 to 12 in. x 12 to 15 in. spread	1 25	10 00
12 to 15 in. x 15 to 18 in. spread	1 75	15 00
Squamata. Sealy-leaved (Japan)—		
6 to 8 in. x 12 to 15 in. spread	1 50	12 50
6 to 8 in. x 15 to 18 in. spread	1 75	16 00
10 to 12 in. x 18 to 24 in. spread	2 00	18 50
* 10 to 12 in. x 2 to 2½ ft. spread	2 50	20 00
* 12 to 15 in. x 3 to 4 ft. spread	5 00	47 50
virginiana. Red or Virginia Cedar—		
1½ to 2 ft.	1 00	9 00
3 to 3½ ft. Nursery grown	2 50	23 50
4 to 4½ ft. Nursery grown	3 50	32 50
5 to 5½ ft. Nursery grown	4 50	42 50
5½ to 6 ft. Nursery grown	5 00	47 50
6 to 7 ft.	6 50	60 00
* 7 to 8 ft.	7 50	72 50
* 8 to 9 ft.	10 00	90 00
virginiana, var. Cannarti. 4 to 4½ ft.	3 50	32 50
5 to 5½ ft.	5 00	
* 6 to 9 ft.	\$6.00 to 12 50	
virginiana, var. glauca. Blue Virginia Cedar—		
3 to 3½ ft.	2 50	23 50
4 to 4½ ft.	4 00	37 50
5 to 5½ ft.	5 00	47 50
6 to 7 ft.	7 50	72 50
* 7 to 8 ft.	10 00	90 00
* 8 to 10 ft.	\$12.50 to 15 00	

* LARGE SIZES FOR IMMEDIATE EFFECT

EVERGREEN TREES

	Each	10
JUNIPERUS virginiana, var. Kosteri. Spreading—		
1½ to 2 ft. x 2 to 2½ ft.	♦..\$1 75	\$15 00
2 to 2½ ft. x 2 to 2½ ft.	♦.. 2 50	22 50
2½ to 3 ft. x 3 to 3½ ft.	♦.. 3 50	32 50
* 3½ to 4 ft. x 3 to 4 ft.	♦.. 5 00	47 50
virginiana, var. Leei elegantissima. Golden Cedar—		
2½ to 3 ft.	2 00	19 00
3 to 3½ ft. Extra heavy	♦.. 2 50	23 50
4 to 4½ ft. Extra heavy	♦.. 4 00	37 50
5 to 5½ ft. Extra heavy	♦.. 5 00	47 50
* 7 to 9 ft. Extra heavy	♦..\$7.50 to 12 50	
virginiana, var. pendula. Weeping Cedar—		
* 6 to 7 ft.	♦..\$6 to 7 50	
* 8 to 12 ft.	♦..\$10 to 15 00	
virginiana, var. plumosa—		
4 to 4½ ft.	3 50	32 50
virginiana, var. plumosa argentea—		
* 6 to 7 ft.	6 00	55 00
* 8 to 9 ft.	\$7.50 to 10 00	
virginiana, var. Schotti. 3 to 3½ ft.		
3½ to 4 ft.	2 50	23 50
4½ to 5 ft.	3 50	33 50
5 to 5½ ft.	4 50	40 00
6 to 7 ft.	5 00	47 50
* 7 to 8 ft.	♦.. 7 50	72 50
* 8 to 10 ft.	♦..\$12.50 to 15 00	90 00
virginiana, var. tripartita—		
2 to 2½ ft.	3 00	28 50
3 to 3½ ft.	3 50	33 50
PICEA alba. White Spruce (See Picea Canadensis)		
Alcockiana. Alcock's Spruce—		
3 to 3½ ft.	2 50	22 50
4 to 4½ ft.	3 50	32 50
* 5 to 5½ ft.	5 00	47 50
canadensis. (White Spruce)—		
2 to 2½ ft.	1 25	10 00
2½ to 3 ft.	2 00	18 50
canadensis, var. aurea. (Golden Spruce)—		
2½ to 3 ft.	2 50	23 50
Engelmani Engelmann's Spruce—		
1½ to 2 ft.	1 50	12 50
2 to 2½ ft.	2 50	23 50
excelsa. Norway Spruce—		
2 to 2½ ft.	per 100, \$85.. 1 00	9 00
3 to 3½ ft.	♦..per 100, \$100.. 1 25	10 00
4 to 4½ ft.	♦..per 100, \$125.. 2 00	15 00
5 to 6 ft.	♦.. 3 00	28 50
* 7 to 20 ft. Specimens	\$5 to 50 00	
excelsa, var. aurea. Golden Norway Spruce—		
* 9 to 10 ft.	\$7.50 to 10 00	
* 10 to 12 ft.	\$15 00	
excelsa, var. Gregoriana. (Gregory's Spruce)—		
18 to 20 in.	2 50	23 50
2 ft.	3 50	33 50
2½ ft.	5 00	
excelsa, var. Inverta. Weeping Norway Spruce—		
8 to 10 ft.	\$7.50 to 10 00	
* 12 to 14 ft.	\$15.00 to 20 00	

ALL GOODS F. O. B. HERE AT LIST PRICES

EVERGREEN TREES

	Each	10
PICEA excelsa, var. Maxwelli. 10 to 12 in.....	\$1 50	\$13 50
excelsa, var. pumila nigra—		
12 to 15 in.	1 50	12 50
excelsa, var. pyramidalis. Pyramidal Spruce—		
2 to 2½ ft.	2 00	18 50
4 to 4½ ft.	3 50	33 50
6 to 7 ft.	4 00	38 50
7 to 8 ft.	\$5.00 to 7 50	
orientalis. Eastern Spruce—		
2½ to 3 ft.	♦ 2 50	23 50
3½ to 4 ft. Specimens	♦ 3 50	32 50
4½ to 5 ft. Specimens	♦ 5 00	
5 to 6 ft.	7 50	72 50
* 6 to 14 ft. Specimens	♦ \$10. to 50 00	
Parryana glauca. 12 to 15 in.....	1 50	10 00
pinsapo. Spanish Fir. 4 to 6 ft.....	\$6 to 10 00	
polita. Tiger's Tail Spruce. 4½ to 5 ft.....	4 00	35 00
5 to 5½ ft.....	7 50	60 00
6 to 7 ft.....	10 00	90 00
pungens. Colorado Spruce. 1½ to 2 ft.....	2 00	18 50
2 to 2½ ft.	2 50	22 50
3 to 3½ ft.	3 50	32 50
* 6 to 15 ft. Specimens	\$12.50 to 100 00	
pungens, var. glauca. Blue Colorado Spruce—		
1½ ft.	2 00	18 50
2 to 2½ ft.	2 50	22 50
2½ to 3 ft. Selected color	♦ 3 50	32 50
3 to 3½ ft. Selected color	♦ 4 00	37 50
3½ to 4 ft. Selected color	♦ 5 00	
* 5 to 14 ft. Selected color	♦ \$10 to 100 00	
pungens, var. Kosteriana. Koster's Blue Colorado Spruce. 2 to 2½ ft.....	♦ 2 50	22 50
2½ to 3 ft. Specimens	♦ 3 50	32 50
3 to 3½ ft. Specimens	♦ 5 00	48 50
3½ to 4 ft. Specimens	♦ 6 00	
4 to 4½ ft. Specimens	♦ 7 50	
* 5 to 14 ft. Grand specimens ..	♦ \$10 to 100 00	
pungens, var. pendula. Weeping Blue Colorado Spruce—		
3 to 5 ft. Specimens.....	♦ \$5 to 10 00	
PINUS Austriaca. See <i>nigra Austriaca.</i>		
Cembra. Swiss Stone Pine—		
2 to 2½ ft.	♦ 3 00	27 50
2½ to 3 ft.	♦ 3 50	32 50
3 to 3½ ft.	♦ 4 00	37 50
3½ to 4 ft.	♦ 5 00	47 50
4 to 4½ ft.	♦ 6 00	57 50
* 5 to 8 ft.	♦ \$7.50 to 15 00	
densiflora. Japan Red Pine. 2½ to 3 ft.....	2 50	23 50
3 to 3½ ft.	3 50	32 50
densiflora, var. globosa (Tanyosho). Japanese Table Pine. 3 ft. spread.....	3 50	32 50
3½ ft. spread	5 00	47 50
4 ft. spread	7 50	70 00
* 4½ ft. spread	10 00	90 00
excelsa. Bhotan Pine. 3 to 3½ ft.....	♦ 3 50	33 50
4 to 4½ ft.	♦ 5 00	45 00
5 to 5½ ft.	♦ 7 50	72 50
* 6 to 7 ft. Heavy	♦ \$10 to 12 50	
* 8 to 15 ft. Heavy specimens....	♦ \$15 to 50 00	

* LARGE SIZES FOR IMMEDIATE EFFECT

EVERGREEN TREES

	Each	10
PINUS koraiensis. Corean Pine. 5 to 6 ft.....	\$3 50	\$32 50
6 to 8 ft.	\$5 to 7 50	
9 to 10 ft.	12 50	
Montana. Mountain Pine. 1½ ft. spread.....	1 50	13 50
2 ft. spread	2 00	18 50
2½ ft. spread	3 50	32 50
3 to 3½ ft. spread	5 00	
Montana, var. Mughus. Dwarf Mt. Pine—		
12 to 15 in.	1 00	9 00
15 to 18 in. spread	◆ 1 50	12 50
18 to 20 in. spread	◆ 2 00	17 50
20 to 24 in. spread	◆ 2 50	22 50
* 26 to 30 in. spread	◆ 3 50	32 50
nigra Austriaca. Austrian Pine. 2 to 2½ ft.....	1 50	13 50
2½ to 3 ft.	2 50	22 50
3½ to 4 ft.	3 50	32 50
4 to 4½ ft. Very Heavy	4 00	37 50
4½ to 5 ft. Very Heavy	◆ 5 00	47 50
6 to 7 ft. Very Heavy	◆ 7 50	70 00
8 to 10 ft.	\$10 to 17 50	
ponderosa. Bull Pine. 1½ to 2 ft.....	1 00	9 00
4 to 5 ft.	3 50	32 50
5 to 6 ft.	5 00	48 50
resinosa. Red Pine. 1½ to 2 ft.....	1 50	13 50
3½ to 4 ft.	3 50	32 50
4½ to 5 ft.	5 00	47 50
rigida. Pitch Pine. 6 to 7 ft.	7 50	72 50
* 8 to 9 ft.	10 00	90 00
* 9 to 10 ft.	12 50	110 00
Strobis. White Pine—	Each	10
1½ to 2 ft.	\$0 75	\$6 00
2 to 2½ ft.	1 00	8 00
2½ to 3 ft.	1 25	10 00
3 to 3½ ft.	1 50	12 50
3½ to 4 ft.	2 00	17 50
4 to 4½ ft.	2 50	20 00
4½ to 5 ft.	3 50	27 50
5 to 6 ft.	4 00	32 50
6 to 7 ft.	4 50	42 50
* 7 to 12 ft. Specimens ...	\$5 to 25 00	
Specimens. See page 4.	Each	10
sylvestris. Scotch Pine. 2 to 2½ ft.....	\$1 00	\$9 00
2½ to 3 ft.	1 50	13 50
3 to 3½ ft.	◆ 2 50	22 50
3½ to 4 ft.	◆ 3 00	27 50
4½ to 5 ft.	◆ 3 50	32 50
5 to 6 ft.	◆ 4 50	40 00
* 6 to 7 ft.	◆ 7 50	70 00
Thunbergii. 3 to 4 ft.....	2 50	23 50
4 to 5 ft.	3 50	33 50
5 to 6 ft.	5 00	48 50

IMPORTANT—We want to especially emphasize the importance of the transplanted tree and the frequency with which our evergreens are transplanted in the Nursery. In no other way can the proper system of fibrous roots be obtained, and this is the all-important item to secure a satisfactory growth when transplanting the trees you purchase.

EVERGREEN TREES

	Each	10
PODOCARPUS koriaana. 2 to 2½ ft.....	\$3 50	\$32 50
PSEUDO TSUGA Douglasi. Douglas' Spruce. 1½ to 2 ft..	1 00	9 00
2 to 2½ ft.	1 50	13 50
2½ to 3 ft.	2 00	18 50
3 to 3½ ft.	2 50	22 50
3½ to 4 ft.	3 50	32 50
4 to 5 ft.	4 00	38 50
5 to 6 ft.	5 00	48 50
6 to 7 ft.	7 50	72 50
* 7 to 8 ft.	10 00	
Douglasi, var. elegans glauca. 2½ to 3 ft.....	2 50	23 50
3½ to 4 ft.	4 00	38 50
4½ to 5 ft.	5 00	45 00
5 to 5½ ft.	7 50	
Douglasi, var. pendula. Weeping Douglas Fir—		
5 to 6 ft.	7 50	
6 to 7 ft.	10 00	
* 7 to 9 ft.	\$12.50 to 15 00	
RETINOSPORA filifera. Thread-branched Japan Cypress—		
1½ to 2 ft.	2 00	15 00
2½ to 3 ft.	3 00	28 50
3 to 3½ ft.	4 00	37 50
3½ to 4 ft. Specimens	5 00	
4½ to 5 ft. Specimens	7 50	70 00
6 to 7 ft. Specimens	\$10 to 15 00	
* 8 to 10 ft. Specimens	\$20 to 25 00	
filifera, var. aurea. Golden Thread-branched Japan Cypress. 12 to 15 in.....	1 50	13 50
15 to 18 in.	2 00	18 50
1½ to 2 ft.	2 50	23 50
2½ to 3 ft.	\$3.50 to 5 00	
leptoclada. Thuya-like Japan Cypress—		
6 to 7 ft.	5 00	47 50
obtusa. Obtuse-leaved Japan Cypress—		
2 to 2½ ft.	2 50	22 50
2½ to 3 ft.	3 00	27 50
3 to 3½ ft.	3 50	32 50
4 to 4½ ft.	4 00	37 50
5 to 6 ft.	7 50	72 50
obtusa, var. compacta. Compact Obtuse-leaved Japan Cypress. 1½ to 2 ft.....	2 00	18 50
3 to 3½ ft.	4 00	38 50
4 to 4½ ft.	5 00	45 00
5 to 5½ ft.	7 50	70 00
obtusa, var. Crippsi. Golden. 1½ to 2 ft.....	2 00	17 50
2 to 2½ ft.	3 50	32 50
obtusa, var. magnifica. 4 to 6 ft.....	\$5 to 7 50	
obtusa, var. nana. Dwarf Obtuse-leaved Japan Cypress. 1 ft.....	1 50	14 00
1½ ft.	2 00	18 50
2 ft.	2 50	23 50
2½ ft.	5 00	
3 ft. Specimens	7 50	
3½ ft. Specimens	10 00	
* 4 to 7 ft. Specimens	\$15 to 25 00	

* LARGE SIZES FOR IMMEDIATE EFFECT

	Each	10
RETINOSPORA obtusa, var. nana aurea. Dwarf Golden		
Obtuse-leaved Japan Cypress. 2½ ft.....	\$5 00	\$45 00
3 to 3½ ft. Specimens	\$7.50 to 10 00	
* 4 to 10 ft. Specimens	\$12.50 to 50 00	
obtusa, var. nana gracilis. 1½ ft.	3 00	28 50
2 ft.	5 00	48 50
pisifera. Pea-fruited Japan Cypress. 2 to 2½ ft..	1 50	13 50
3 to 3½ ft.	3 00	28 50
4 to 4½ ft.	4 00	38 50
5 to 5½ ft.	5 00	47 50
* 6 to 16 ft. Specimens	\$7.50 to 75 00	
pisifera, var. aurea. Golden Pea-fruited Japan		
Cypress. 1½ ft.....	1 00	9 00
2½ to 3 ft.	2 50	23 50
3 to 3½ ft.	3 00	28 50
3½ to 4 ft.	3 50	32 50
4 to 4½ ft.	4 00	37 50
5 to 6 ft. Specimens	\$5 to 7 50	
* 7 to 16 ft. Specimens	\$10 to 75 00	
plumosa. Plume-like Japan Cypress—		
1½ to 2 ft.	1 00	9 00
2 to 2½ ft.	1 50	13 50
2½ to 3 ft.	2 00	18 50
3 to 3½ ft.	2 50	23 50
3½ to 4 ft. Specimens	3 50	32 50
4 to 5 ft. Specimens	4 00	37 50
* 6 to 14 ft. Specimens	\$5 to 35 00	
plumosa, var. argentea. 5 to 6 ft.....	3 50	32 50
plumosa, var. aurea. Golden Plume-like Japan		
Cypress. 1½ to 2 ft. Bushy.....	1 00	8 50
2 to 2½ ft. Bushy	1 50	13 50
2½ to 3 ft. Bushy	2 00	18 50
3 to 3½ ft. Bushy	2 50	23 50
3½ to 4 ft. Specimens	3 50	32 50
4 to 4½ ft. Specimens	4 00	37 50
5½ to 6 ft. Specimens	5 00	47 50
6½ to 7 ft. Specimens	7 50	70 00
* 7½ to 8 ft. Specimens	\$10 to 15 00	
* 9 to 12 ft. Specimens	\$20 to 35 00	
plumosa, var. flavescens—		
2½ x 2½ ft.	5 00	47-50
3 to 5 ft. Specimens	\$7.50 to 20 00	
plumosa, var. sulphurea. 15 to 18 in.....	1 50	12 50
2 x 2 ft.	3 50	33 50
2½ x 2½ ft.	5 00	47 50
3 to 3½ ft. Specimens	\$5 to 7 50	
* 4½ to 6 ft. Specimens	\$10 to 15 00	
squarrosa. Squarrose-leaved Japan Cypress—		
1½ ft.per 100, \$60..	1 00	8 50
2 ft.per 100, \$100..	1 50	13 50
2½ ft.per 100, \$200..	2 50	22 50
3 ft.	3 50	32 50
4 ft. Specimens	5 00	47 50
5 to 5½ ft. Specimens	6 00	55 00
* 7 to 18 ft. Heavy Specimens..	\$10 to 125 00	

This is excellent stock; exceptionally broad, bushy and low-branched.

EVERGREEN TREES

	Each	10
SCIADOPITYS verticillata. Umbrella Pine. 2 ft....♦..	\$2 50	\$23 50
2½ ft.♦..	3 50	32 50
3 ft.♦..	5 00	45 00
3½ to 4 ft.♦..	7 50	72 50
4½ to 5 ft. Specimens♦..	10 00	
* 6 to 9 ft. Specimens♦..	\$12.50 to 35 00	
TAXUS baccata. English Yew. 2 to 2½ ft.....	2 50	23 50
3 to 3½ ft.♦..	3 50	33 50
4 to 4½ ft.♦..	7 50	72 50
* 5 to 6 ft. Specimens♦..	\$10 to 25 00	
baccata, var. adpressa. 2 ft.♦..	2 50	23 50
2½ ft.♦..	3 50	32 50
3 ft.♦..	5 00	45 00
3½ ft.♦..	7 50	
4 to 4½ ft. Specimens♦..	10 00	
baccata, var. aurea. Golden English Yew—		
3 ft.♦..	3 50	
4 ft.♦..	7 50	
5 to 6 ft.♦..	\$10 to 15 00	
baccata, var. Dovastoni. Dovaston's Yew—		
4 to 5 ft.♦..	7 50	
5 to 6 ft.♦..	10 00	
baccata, var. Dovastoni aurea. Dovaston's Golden Yew. * 6 to 8 ft. Specimens...♦..	\$10 to 20 00	
baccata, var. elegantissima. Elegant English Yew—		
3 to 4 ft.♦..	\$5 to 10 00	
* 4½ to 5 ft. Specimens♦..	\$12.50 to 20 00	
baccata, var. erecta. Erect English Yew—		
2½ to 3 ft.♦..	2 50	22 50
3 to 3½ ft.♦..	3 50	32 50
3½ to 4 ft.♦..	5 00	47 50
4½ to 5 ft.♦..	\$10 to 15 00	
baccata, var. erecta aurea. Erect Golden English Yew. 1½ to 2 ft.....	2 00	18 50
baccata, var. fastigiata. Irish Yew. 2½ ft....♦..	2 50	
3 ft.♦..	3 50	
3½ ft.♦..	7 50	
* 4 to 6 ft. Specimens♦..	\$7.50 to 15 00	
baccata, var. fastigiata aurea. Golden Irish Yew—		
2 ft.♦..	2 50	
2½ ft.♦..	3 50	
3½ to 4 ft. Specimens♦..	\$7.50 to 10 00	
* 5 to 6 ft. Specimens♦..	\$12.50 to 15 00	
baccata, var. fruticosa lutea. Yellow Fruited—		
Yew. 4 to 6 ft.....	\$7.50 to 15 00	
baccata, var. gracilis pendula. 3½ to 4 ft..\$3.50 to 5 00		
4 to 5 ft.♦..	\$7.50 to 10 00	
* 6 to 7 ft. Specimens♦..	\$15.00 to 20 00	
* 8 to 9 ft. Specimens♦..	\$25.00 to 35 00	
baccata, var. repandens. Spreading English Yew—		
10 to 12 in. spread♦..	1 50	12 50
12 to 15 in. spread♦..	2 00	18 50
15 to 18 in. spread♦..	3 50	32 50
baccata, var. Washingtoni aurea. Washington's Golden English Yew. 3 to 3½ ft.♦..	\$5 to 7 50	
4 to 4½ ft. Specimens♦..	\$10 to 15 00	

* LARGE SIZES FOR IMMEDIATE EFFECT

EVERGREEN TREES

15

	Each	10
TAXUS canadensis (Canadian Yew). 12 in. spread.....	\$1 00	\$8 50
15 in. spread	1 25	10 00
18 in. spread	1 50	13 50
canadensis, var. aurea. Golden Canadian Yew—		
2½ to 3 ft.	\$5 to 10	
cuspidata. Abrupt-leaved Japan Yew—		
12 to 15 in.	1 50	13 50
1½ ft.	2 50	23 50
2 ft.	3 50	32 50
2½ ft.	5 00	45 00
* 3 to 4 ft.	\$7.50 to 10 00	
cuspidata. (Capitate form). 1½ ft.....	2 50	
2 ft.	3 50	32 50
2½ ft.	5 00	45 00
* 3 ft.	7 50	60 00
cuspidata, var. brevifolia. 12 to 15 in.....	2 00	18 50
1½ ft.	2 50	23 50
2 ft.	3 50	32 50
* 2½ to 3 ft. Specimens	\$5 to 7 50	
THUJOPSIS borealis, var. latifolia glauca. Glaucous Sitka		
Cypress. 3 to 3½ ft.....	2 50	
4 to 4½ ft.	3 50	
5 to 5½ ft.	5 00	
6 to 6½ ft.	6 00	50 00
* 7 to 8 ft.	7 50	65 00
* 8 to 10 ft.	10 00	75 00
Standishi. See <i>Thuja Standishi</i> .		
THUJA occidentalis. American Arborvitæ—		
2 to 2½ ft.	per 100, \$50..	75
2½ to 3 ft.	per 100, \$75..	1 00
3 to 3½ ft.	per 100, \$90..	1 25
3½ to 4 ft.	per 100, \$100..	1 50
4 to 4½ ft. Very heavy	per 100, \$150..	2 00
4½ to 5 ft. Very heavy	per 100, \$175..	2 50
5 to 5½ ft. Very heavy	per 100, \$200..	3 00
5½ to 6 ft. Very heavy	per 100, \$275..	3 50
6 to 7 ft. Very heavy	per 100, \$300..	4 00
* 7 to 8 ft. Very heavy.	per 100, \$350..	6 00
* 8 to 9 ft. Specimens	\$7.50 to 10 00	10 00
occidentalis, var. aurea. George Peabody's Arbor-		
vitæ. 1½ to 2 ft.....	1 00	8 50
2 to 2½ ft.	1 25	11 50
2½ to 3 ft.	1 75	15 00
3 to 3½ ft.	2 50	20 00
4 to 4½ ft.	3 50	32 50
5 to 5½ ft.	4 00	37 50
6 to 6½ ft.	5 00	47 50
* 7 to 12 ft. Specimens	\$6 to 17 50	
occidentalis, var. cristata. 1½ to 2 ft.....	2 50	
occidentalis, var. Douglasi. 2 to 2½ ft.....	1 75	16 50
3 to 3½ ft.	2 50	22 50
4 to 4½ ft.	3 50	32 50
5 to 5½ ft.	4 50	42 50
5½ to 6 ft.	6 00	57 50

EVERGREEN TREES

	Each	10
THUJA occidentalis, var. globosa. Globe Arborvitæ—		
15 to 18 in. Fine.....	\$1 50	\$13 50
2 ft.	✦ 2 00	
occidentalis, var. Hoveyi (Hovey's Arborvitæ)—		
* 3 to 3½ ft.	3 50	32 50
* 3½ to 4 ft. Heavy	5 00	45 00
occidentalis, var. Little Gem. 15 in.....	1 50	
occidentalis, var. Lobbi. 2 to 2½ ft.....	2 00	18 50
occidentalis, var. plicata pyramidalis—		
2 to 2½ ft.	✦ 2 00	18 50
2½ to 3 ft.	✦ 2 50	22 50
3½ to 4 ft.	✦ 3 00	27 50
* 5 to 6 ft.	✦ 5 00	
occidentalis, var. pyramidalis. Pyramidal Arborvitæ—		
3 to 3½ ft.	1 50	13 50
4 to 4½ ft.	✦ 2 00	18 50
5 to 5½ ft.	✦ 3 00	27 50
6 to 6½ ft.	✦ 4 00	37 50
* 7 to 7½ ft.	✦ 6 00	
* 8 to 10 ft.	✦ \$7.50 to 12 50	
occidentalis, var. recurva nana—		
2½ to 3 ft. Specimens	✦ 3 50	
occidentalis, var. Rosenthalis. 1½ ft.....	1 50	13 50
2 to 2½ ft.	2 50	22 50
3 to 3½ ft.	3 00	28 50
4 to 4½ ft.	3 50	32 50
* 5 to 5½ ft.	5 00	47 50
occidentalis, var. Tom Thumb. 15 to 18 in.....	2 00	17 50
occidentalis, var. spiralis. 6 to 7 ft.....	5 00	48 50
occidentalis, var. Vervæneana. Vervæne's Arborvitæ—		
2 to 2½ ft.	1 00	9 00
3 to 3½ ft.	2 00	18 50
5½ to 6 ft.	3 50	32 50
6 to 7 ft. Heavy specimens	✦ 5 00	48 50
* 7 to 8 ft. Heavy specimens	✦ 7 50	70 00
* 9 to 12 ft. Heavy specimens.✦	\$12.50 to 20 00	
occidentalis, var. Wareana. Siberian Arborvitæ—		
1½ to 2 ft.per 100, \$85..	1 00	9 00
2 to 2½ ft. Heavy	per 100, \$115..	1 50
2½ to 3 ft. Very bushy ...per 100, \$200..	2 50	23 50
3 to 3½ ft. Very bushy .✦per 100, \$275..	3 50	32 50
4 ft. Very bushy ...per 100, \$350..	4 00	38 50
* 5 ft. Very bushy .✦per 100, \$400..	5 00	47 50
* 5½ ft. Very bushy	✦ 7 50	70 00
* 6 to 7 ft. Very bushy	✦ \$8.50 to 10 00	
occidentalis, var. Wareana aurea—		
4 to 4½ ft.	3 50	33 50
* 5 to 5½ ft.	5 00	47 50
* 6 to 8 ft.	\$7.50 to 10 00	
Standishii (Thujopsis Standishi). 3 to 3½ ft....	3 50	32 50
4 to 4½ ft.	4 50	42 50

✦ LARGE SIZES FOR IMMEDIATE EFFECT

		Each	10
TSUGA canadensis. Hemlock. 1½ to 2 ft. ♦	per 100,	\$60..	\$0 75
2 to 2½ ft.	♦.per 100,	\$90..	1 25
2½ to 3 ft.	♦.per 100,	\$115..	1 75
3 to 3½ ft.	♦.per 100,	\$150..	2 50
3½ to 4 ft.	♦.per 100,	\$200..	3 00
4 to 4½ ft.	♦.per 100,	\$275..	3 50
4½ to 5 ft.	♦.per 100,	\$350..	4 00
5 to 5½ ft.	♦.per 100,	\$400..	5 00
5½ to 6 ft.	♦.....♦		6 00
* 7 to 7½ ft.	♦.....♦		8 50
* 8 to 8½ ft.	♦.....♦	\$10.00 to	12 50
* 9 to 10 ft.	♦.....♦	\$13.50 to	15 00
* 11 to 12 ft.	♦.....♦	\$17.50 to	20 00
* 13 to 14 ft.	♦.....♦	\$25.00 to	30 00
* 14 to 15 ft.	♦.....♦		35 00

XXX—One Block of very extra heavy plants 4 to 6 ft. at prices on application.

canadensis, var. gracilis. 6 to 7 ft.....	7 50	70 00
8 to 9 ft.	10 00	
canadensis, var. Sargentii pendula. Weeping Hemlock. 2 ft.	2 50	23 50
4 to 6 ft. Specimens.....♦	\$10 to 15 00	
caroliniana. Southern Hemlock. 1½ to 2 ft.....	2 00	18 50
diversifolia. 1½ ft.....per 100,	\$115..	1 50
Sieboldi. Japanese Hemlock. 1½ to 2 ft.....	2 50	23 50
2 to 2½ ft. Specimens	♦..\$3.50 to	5 00
3 to 5 ft. Specimens	♦..\$7.50 to	10 00

PLANTING FOR QUICK SCREENS AND WINDBREAKS

Many inquiries come to us from Park and Municipal Officers, Superintendents of Cemeteries, large Private Estates and from Country Clubs with regard to trees and shrubs for extensive planting for purposes of Screens and Windbreaks. In some cases the question of expense enforces the use of smaller sizes of stock than would really be most desirable; in those instances we can obviate the difficulty by furnishing stock that is strong and well rooted but by reason of crooked stems or one-sided tops does not come up to the standard which we list in this Price List.

Your inquiry giving us the details of your problem—size, character of the soil, exposure, etc., will give us an opportunity to quote you prices as much as 50% off our regular list on trees up to 20 feet in height and on strong, tall shrubs for underplanting and facing off the plantations.

Please refer in your inquiries to this heading—Planting for Quick Screens and Windbreaks.



A Block of Box Bush and Evergreens.

EVERGREEN SHRUBS

		Each	10
ANDROMEDA Catesbæi. See <i>Leucothoë</i> .			
<i>floribunda</i> (Pieris)—			
10 to 12 in. broad✦..per 100, \$125..	\$1 50	\$13 50
12 to 15 in. broad✦..	1 75	16 50
15 to 18 in. broad✦..	2 00	18 50
18 to 20 in. broad✦..	2 75	
22 to 24 in. broad✦..	3 50	
26 to 30 in. broad✦..	5 00	
<i>japonica</i> (Pieris). 10 to 12 in.....✦.. 1 25 10 00			
12 to 15 in.✦..	1 50	13 50
15 to 18 in.✦..	2 00	18 50
18 to 20 in.✦..	2 50	23 50
24 in.✦..	3 50	32 50
<i>speciosa</i> (Zenobia). 18 in.....✦..		1 50	13 50
AZALEA (for deciduous types see page 45).			
<i>amœna</i> . Claret color. 12 to 15 in.per 100, \$75.. 1 00 9 00			
15 to 18 in. Bushyper 100, \$90..	1 50	13 50
18 to 20 in. Bushyper 100, \$165..	2 00	18 50
20 to 24 in. Bushy	2 50	23 50
* 2½ to 3 ft.\$3.50 to	7 50	
<i>amœna</i> , var. <i>Hinode-giri</i> . Carmine Pink—			
10 to 12 in.✦..per 100, \$80..	1 00	9 00
12 to 15 in.✦..per 100, \$115..	1 50	13 50
15 to 18 in.✦..per 100, \$150..	1 75	16 50
* 18 to 20 in.✦..per 100, \$175..	2 00	18 50
* 2 to 2½ ft.\$2.50 to	3 50	
<i>indicum album</i> (White). True type—			
12 to 15 in.✦..	2 00	18 50
20 to 24 in.✦..	2 50	23 50
* 2½ to 3 ft.✦..\$3.50 to	7 50	

* LARGE SIZES FOR IMMEDIATE EFFECT

EVERGREEN SHRUBS

	Each	10
AZALEA Beni giri (Bright Red). 15 to 18 in.	\$3 50	\$32 50
Fuji-manyo (Light Purple) Double. 1½ ft.	2 00	18 50
2 ft.	2 50	23 50
2½ ft.	3 00	28 50
Hino-manyo (Pure Pink). 12 to 15 in.	1 50	13 50
Kaempferi. (Coral Red.) 18 in.	2 00	18 50
ledifolium. Pure White. Hardy. 12 to 15 in.	1 50	13 50
15 to 18 in.	2 00	18 50
18 to 20 in.	2 50	23 50
20 to 24 in.	3 00	27 50
* 30 to 48 in. Specimens	\$3.50 to 10 00	
ledifolium <i>gdf. superba.</i> 1½ to 2 ft.	3 50	33 50
ledifolium, Narcissiflora (Yodo-gowa)—		
15 to 18 in.	1 00	9 00
18 to 24 in.	1 50	13 50
* 30 in.	2 50	23 50
ledifolium, var. roseum. Shell pink (Wakasagi)—		
8 to 12 in.	1 50	13 50
2 ft.	3 50	

ANDORRA-GROWN BOX-WOOD

BUXUS japonica, var. aurea. Golden Japanese Box—		
12 to 15 in.	1 00	9 00
15 to 18 in.	1 50	13 50
1½ ft.	2 00	18 50
2 ft.	2 50	22 50
2½ ft.	\$3.50 to 5 00	
* 3 to 4 ft.	\$7.50 to 50 00	
japonica, var. Fortunei. Japanese Box—		
3½ to 4 ft.	\$7.50 to 15 00	
* 4½ to 5 ft.	\$20 to 25 00	
japonica, var. rotundifolia. Round-leaved—		
2 ft. Bush shape	per 100, \$275.. 3 00	28 50
2½ ft. Bush shape	5 00	48 50
3 ft. Bush shape	7 50	72 50
3½ ft. Bush shape	10 00	
4 to 5 ft. Bush shape	\$12.50 to 25 00	
3 ft. Pyramids	7 50	70 00
3½ ft. Pyramids	10 00	90 00
4 ft. Pyramids	12 50	115 00
4½ ft. Pyramids	15 00	
* 6 to 7½ ft. Pyramids	\$20 to 75 00	
japonica, var. rotundifolia pendula. 2½ ft.	5 00	48 50
3 ft.	7 50	70 00
3½ ft.	10 00	
sempervirens. Bush shape—		
12 to 15 in.	1 00	9 00
1½ ft.	1 50	12 50
2 ft.	2 00	18 50
2½ ft.	3 50	32 50
3 ft. Bushy	7 50	70 00
3½ ft. Bushy	10 00	95 00
2 ft. x 2 ft. Extra Bushy	3 50	32 50
2½ ft. x 2½ ft. Extra Bushy	7 50	65 00
3 ft. x 3 ft. Extra Bushy	12 50	115 00
3½ ft. x 3½ ft. Extra Bushy	25 00	
4 to 7 ft. Specimens—broad as their height. See price, page 4.		

ALL GOODS F. O. B. HERE AT LIST PRICES



Andorra-Grown Specimen Boxwood (*Buxus Sempervirens*).

BUXUS <i>sempervirens</i> . Pyramids. Andorra-grown—		Each	10
2½ ft. Extra Bushy	◆	\$3 50	\$30 00
3 ft. Extra Bushy	◆	5 00	47 50
3½ ft. Extra Bushy	◆	7 50	72 50
* 4 to 4½ ft. Specimens	◆	10 00	90 00
* 5 to 7 ft. Specimens	◆	\$15 to 75 00	
Pyramids. Slim—Close trimmed—			
4 to 4½ ft. x 12 in. base		4 00	38 50
4½ to 5 ft. x 15 to 18 in. base		6 00	55 00
Standards—			
1 ft. stems, 12 to 15 in. heads.....	◆	2 50	23 50
2 ft. stems, 15 to 18 in. heads.....	◆	3 50	33 50
2 ft. stems, 22 to 26 in. heads.....	◆	\$5 to 7 50	
2½ ft. stems, 28 to 36 in. heads..	◆	\$7.50 to 25 00	
3 ft. stems, 14 to 16 in. heads.....		5 00	48 50
3½ ft. stems, 14 to 16 in. heads.....		6 00	57 50
4 ft. stems, 16 to 18 in. heads.....		7 50	72 50
<i>sempervirens</i> , var. <i>angustifolia</i> variegata—			
2½ ft. Bushy		3 50	33 50
3 to 3½ ft. Bushy		7 50	72 50
4 to 4½ ft. Bushy		10 00	90 00
* 5 to 5½ ft. Bushy		\$15 to 25 00	
<i>sempervirens</i> , var. <i>arborescens</i> . Tall Tree Box—			
2½ ft.	◆	3 50	33 50
3 ft.	◆	5 00	47 50
3½ ft.		7 50	72 50
4 ft.		10 00	90 00
* 4½ ft.		\$12.50 to 15 00	

* LARGE SIZES FOR IMMEDIATE EFFECT

EVERGREEN SHRUBS

	Each	10
BUXUS sempervirens, var. argentea marginata. Silver-tipped Box. 1½ to 2 ft.....♦..	\$2 00	\$18 50
3 ft.	7 50	72 50
3½ ft.	8 50	82 50
* 5 to 5½ ft.	\$15 to 25 00	
sempervirens, var. Handsworthi. 2 ft.....	1 50	13 50
2½ ft.	2 50	23 50
3 ft.	3 50	32 50
4 ft.	7 50	72 50
5 to 6 ft.	\$10 to 15 00	
sempervirens, var. myrtifolia. Myrtle Leaf—		
2 ft. Extra bushy	3 50	33 50
2½ ft. Extra bushy	7 50	72 50
3 ft. Extra bushy	12 50	115 00
3½ ft. Extra bushy	25 00	
sempervirens, var. salicifolia. 2½ ft.	3 50	33 50
3 ft.	6 00	55 00
3½ ft.	7 50	70 00
4 ft.	10 00	90 00
4½ ft.	12 50	
sempervirens, var. suffruticosa. Dwarf Edging—		
3 to 4 in. ♦..per 100, \$6.00; per 1,000, \$50		75
4 to 5 in. ♦..per 100, \$7.50; per 1,000, \$60	25	1 50
5 to 6 in.♦..	35	2 00
6 to 7 in.♦..	50	3 50
8 to 10 in.♦..	75	5 00
18 in. globe shaped	3 50	35 00
20 in. globe shaped	5 00	45 00
COTONEASTER Franchetti. 1½ to 2 ft.....	50	3 50
horizontalis. 12 to 15 in.....	75	6 00
microphylla. 12 to 15 in.....	75	6 00
Wheeleri. 12 to 15 in.....	75	6 00
CRATÆGUS Pyracantha coccinea. Evergreen Thorn—		
1½ ft. Bushy	1 50	13 00
2 ft. Bushy	2 50	20 00
2½ to 3 ft.	3 50	30 00
Pyracantha, var. Lelandi. Leland's Thorn—		
1½ to 2 ft.	1 50	13 50
2 to 2½ ft.	2 50	22 50
DAPHNE Cneorum. 2-year	75	6 00
EUONYMUS radicans and variegata. See Trailing Plants.		
japonica. Japan Euonymus. 1½ ft.....	50	3 50
japonica, var. argentea. Silver-leaved. 2 ft.....	75	5 00
japonica, var. aurea. Golden-leaved. 2 to 3 ft..	75	6 00
ILEX crenata. Japanese Holly. 1 ft.....	1 25	10 00
1½ ft.	2 00	18 50
2 ft.	2 50	22 50
2½ ft. Bushy	♦..\$5 to 10 00	
* 3 to 5 ft. Specimens	♦..\$15 to 35 00	
crenata, var. buxifolia. Box-leaved (fastigate form). 2½ ft. Bushy.....♦..	3 50	32 50
3 ft.♦..	4 00	
3½ ft.♦..	5 00	
4 ft.♦..	7 50	
4½ ft.♦..	8 50	
* 5 to 6 ft.♦..	\$12.50 to 20 00	

ALL GOODS F. O. B. HERE AT LIST PRICES

EVERGREEN SHRUBS

	Each	10
ILEX crenata, var. Fortunei. Fortune's Holly—		
2 ft.♦	\$3 50	\$30 00
2½ ft.♦	\$7.50 to 10 00	
3 to 5 ft.♦	\$12.50 to 35 00	
crenata, var. latifolia. Broad-leaved Japanese		
Holly. 3 to 3½ ft.♦	\$3.50 to 5 00	
4 to 5 ft.♦	7 50	
5 to 6 ft.♦	\$10 to 15 00	
crenata, var. microphylla. Small-leaved Japanese		
Holly—		
12 to 15 in. Bushy♦	1 00	8 50
15 to 18 in. Bushy♦	1 50	13 50
2 ft. Bushy♦	3 50	33 50
2½ ft. Bushy♦	\$5 to 7 50	
* 3 ft. Specimens♦	15 00	
* 3½ to 4 ft. Specimens♦	\$20 to 25 00	
KALMIA latifolia. Mountain Laurel—		
1½ ft. Clumps.....♦	per 100, \$100.. 1 50	12 50
2 ft. Clumps.....♦	per 100, \$175.. 2 00	18 50
2½ ft. Clumps.....♦	per 100, \$200.. 2 50	22 50
2½ ft. Heavy clumps	♦ 3 50	30 00
LEUCOTHOE Catesbæi. Drooping Andromeda—		
12 to 15 in.♦	per 100, \$60.. 1 00	7 50
15 to 18 in.♦	per 100, \$70.. 1 50	12 50
MAHONIA Aquifolium. Holly leaved—		
15 to 18 in.	per 100, \$40.. 75	5 00
18 to 24 in.	per 100, \$60.. 1 00	7 50
24 to 30 in. Heavy	1 50	
japonica. Japanese Mahonia. 1½ to 2 ft.♦	2 00	18 50
2 to 2½ ft.♦	2 50	23 50
2½ to 3 ft.♦	3 00	25 00
OSMANTHUS aquifolium—		
2½ to 3 ft.	3 50	32 50
3½ to 4 ft.	5 00	
4 to 5 ft.	7 50	
PACHYSANDRA terminalis	per 100, \$10.. 25	2 00
PIERIS. See <i>Andromeda</i> , page 18.		
SKIMMIA japonica (fruiting). 1 ft. Fine. per 100, \$165..	2 00	18 50
oblata (fruiting). 12 in.	2 00	18 50
12 to 15 in.	2 50	23 50
ZENOBIA. See <i>Andromeda</i> , page 18.		

REAL VALUE—NOT THE PRICE BUT THE PLANT

The universal practice of listing growing plants by a simple statement of name, height and price gives in reality only a meagre guide as to the real quality and worth of nursery stock. The buyer must take into consideration the difference in breadth of top, quality of root system and general vigor of stock as grown at Andorra as against that ordinarily offered.

Our Trees, Evergreens and Shrubs are grown in rows of ample width, the plants are set at wide spaces and frequently transplanted and root-pruned; thus we produce bushy, well-furnished plants with a compact, vigorous root-system which assures their success, in striking comparison to the poor results obtained by planting cheaper plants grown closely together and infrequently transplanted.

* LARGE SIZES FOR IMMEDIATE EFFECT



Rhododendrons at Andorra.

RHODODENDRONS

HYBRID VARIETIES—ANDORRA-GROWN

Our offering of Rhododendrons consists of many thousand plants, in fifty varieties, and in a range of sizes from one to five feet. These are acclimated—*Andorra-grown* stock—in the hardiest varieties. They are grown in open, unsheltered ground, with northern exposure, and the wind-swept hills of Andorra are not kind to anything of a tender nature, so that you may depend upon Andorra-grown Rhododendrons.

RHODODENDRONS, Catawblense Hybrids Assorted.

Each 10

Our selection of varieties—

A
N
D
O
R
R
A
G
R
O
W
N

1½ to 2 ft.✦..per 100, \$165..	\$2 00	\$18 50
2 to 2½ ft.✦..per 100, \$225..	2 50	23 50
Abraham Lincoln. Rosy crimson—		
1½ ft.	1 75	15 00
2 ft.	2 25	20 00
2½ ft.	3 50	32 50
3 to 4 ft.	\$7.50 to 10 00	
Album. White—		
* 3½ to 4 ft.	10 00	
Album elegans. Blush white—		
1½ ft.	1 75	15 00
2 ft.	2 25	20 00
2½ ft.	3 50	32 50
3½ to 4 ft.	\$5 to 10 00	
Album grandiflorum. Blush white—		
2 to 2½ ft.	2 25	20 00
2½ ft.	3 50	32 50
3½ ft.	5 00	
Alex. Dancer. Light scarlet. 1½ ft.....	2 00	17 50
2 ft.	3 50	32 50
Amphion. Rose pink. 1½ ft.....	2 50	23 50
2 ft.	3 50	33 50
Anna Parsons. Red, 2½ ft.....	3 50	32 50
Atrosanguineum. Dark scarlet—		
15 in.	1 50	13 50
18 in.	2 50	23 50
24 in.	3 00	28 50
2½ ft.	3 50	32 50

ALL GOODS F. O. B. HERE AT LIST PRICES

EVERGREEN SHRUBS

	Each	10
RHODODENDRONS, Blandyanum. Rosy crimson. 1½ ft.	\$2 25	\$20 00
2½ ft.	3 50	33 50
3 to 3½ ft. Specimens.	\$7.50 to 15 00	
Boule de Feu. Red. 1½ ft.	2 25	20 00
2 ft.	2 75	26 00
2½ ft.	3 50	32 50
Boule de Neige. White. 15 to 18 in.	1 75	16 50
18 to 20 in.	2 50	23 50
20 to 24 in.	3 50	32 50
Candidissimum. White. 1½ ft.	1 75	15 00
2 ft.	2 50	22 50
2½ ft.	3 50	32 50
* 3 ft.	\$5 to 7 50	
Caractacus. Purple crimson. 1½ ft.	1 75	15 00
2 ft.	2 25	20 00
2½ ft.	3 50	32 50
3 ft.	5 00	48 50
* 3½ to 5 ft.	\$10 to 15 00	
Charles Bagley. Bright red. 1½ ft.	2 00	17 50
2 ft.	2 50	23 50
2½ ft.	3 50	33 50
3 ft.	\$5 to 7 50	
Charles Dickens. Scarlet. 1½ ft.	2 00	17 50
2 ft.	2 50	23 50
2½ ft.	3 50	33 50
3 ft.	\$5 to 7 50	
* 4 to 4½ ft.	\$10 to 15 00	
C. S. Sargent. Crimson. 1½ ft.	2 00	17 50
2 ft.	2 50	23 50
2½ ft.	3 50	33 50
3 ft.	5 00	
Daisy Rand. Deep crimson. 2 ft.	2 75	26 50
Delicatissimum. White. 1½ ft.	1 75	16 50
2 ft.	2 50	23 50
2½ ft.	3 00	28 50
* 3 ft.	3 50	
3½ ft.	5 00	
Dr. Torry. Lilac red. 2 ft.	2 50	23 50
2½ ft.	3 50	
Edward S. Rand. Rich scarlet. 1½ ft.	2 00	18 50
2 ft.	2 50	23 50
Everestlanum. Rosy lilac. 15 to 18 in.	1 75	15 00
18 to 20 in.	2 00	18 50
20 to 24 in.	2 50	22 50
2½ ft.	3 50	
* 3 to 3½ ft. Heavy	\$5 to 10 00	
F. D. Godman. Crimson. 1½ ft.	2 00	18 50
2 ft.	2 50	23 50
2½ to 3 ft.	\$3.50 to 5 00	
Florence Smith. 2 ft.	2 50	23 50
General Grant. Rosy-scarlet. 1½ ft.	1 75	16 50
2 ft.	2 00	18 50
2½ ft.	2 50	23 50
* 3 to 4 ft.	\$5 to 12 50	
Giganteum. Rosy crimson. 1½ ft.	1 75	16 50
2 ft.	2 00	18 50
2½ ft.	2 50	23 50
3 to 3½ ft.	\$5 to 7 50	
Gomer Waterer. Blushed White. 1½ ft.	2 00	18 50
2 ft.	2 50	23 50

A
N
D
O
R
R
A
G
R
O
W
N

* LARGE SIZES FOR IMMEDIATE EFFECT

EVERGREEN SHRUBS

25

RHODODENDRONS, Hannah Felix. Light red—

	Each	10
* 3 to 4 ft.	\$5 to \$10	00
Harriet Sargent. Crimson. 1½ ft.	2 00	\$18 50
Henry Probasco. Deep Carmine. 1½ ft.	2 00	18 50
2 ft.	2 50	23 50
2½ ft.	3 50	
Herbert Parsons. Lilac—		
2 ft.	2 50	23 50
2½ ft.	3 50	32 50
3 to 4 ft.	\$5 to 10	00
H. H. Hunnewell. Dark crimson. 18 in. ..	2 00	18 50
2 ft.	2 50	23 50
2½ ft.	3 50	32 50
3 to 3½ ft.	\$5 to 7	50
Chas. S. Sargent. Rich crimson. 1½ ft. ...	2 00	18 50
2 ft.	2 50	23 50
2½ ft.	3 50	33 50
H. W. Sargent. Crimson. 1½ ft.	2 00	18 50
2 ft.	2 50	22 50
2½ ft.	3 50	32 50
Ignatius Sargent. Deep pink. 1½ ft.	2 00	18 50
2 ft.	2 50	23 50
2½ ft.	3 50	32 50
J. Marshall Brooks. Scarlet. 2 ft.	2 50	23 50
2½ ft.	3 50	32 50
3 to 3½ ft.	\$5 to 7	50
Jas. Macintosh. Rosy Scarlet; fine truss—		
1½ ft.	2 00	18 50
2 ft.	2 50	23 50
John Spencer. Rose. 2½ ft.	3 00	27 50
* 3 to 5 ft.	\$5 to 20	00
J. R. Trumpy. Rosy crimson. 2 ft.	2 50	23 50
2½ ft.	3 00	28 50
Kettledrum. Deep red. 1½ ft.	2 50	23 50
2 ft.	3 50	32 50
2½ ft.	5 00	48 50
3 ft.	7 50	
Kissena. Lavender. 1½ ft.	2 50	23 50
Lady Armstrong. Pale rose. 1½ ft.	1 75	16 50
2 ft.	2 25	20 00
2½ ft.	3 00	
* 3 ft.	\$5 to 7	50
Lady Clermont. Rosy scarlet—		
3 to 4 ft.	\$5 to 10	00
Lady Gray Egerton. Blush white. 2 ft. ...	2 50	23 50
2½ ft.	3 50	32 50
3 ft.	5 00	48 50
Lee's. Dark purple. 2 ft.	2 00	18 50
Luciferum. Clear white. 2 ft.	2 00	18 50
2½ ft.	2 50	23 50
3 to 3½ ft.	\$5 to 7	50
Mad. Carvalho. White. 2 ft.	2 00	18 50
Mad. Masson. White. 1½ ft.	1 75	16 50
Mrs. Chas. S. Sargent. Pink Everestianum—		
18 to 20 in.	2 50	23 50
20 to 24 in.	3 00	28 50
26 to 30 in.	3 50	33 50

A
N
D
O
R
R
A
'
G
R
O
W
N

EVERGREEN SHRUBS

	Each	10
RHODODENDRONS, Mildred Grant. 2 ft.	\$2 50	\$23 50
Mrs. H. Ingersoll. Deep rose-lilac—		
1½ ft.	1 75	16 50
2 ft.	2 50	23 50
Mrs. Jno. Clutton. White. 1½ ft.	1 50	13 50
2 ft.	2 00	18 50
Mrs. Milner. Crimson. 1½ ft.	2 00	18 50
2 ft.	2 50	23 50
* 3 ft.	\$5 to 7 50	
Old Port. Plum. 1½ ft.	2 00	18 50
2 ft.	2 50	23 50
* 3 to 4 ft.	\$5 to 10 00	
Parson's gloriosum. Blush. 1½ ft.	1 50	13 50
2 ft.	2 00	18 50
2½ ft.	2 50	23 50
* 3 to 5 ft.	\$5 to 10 00	
Parson's grandiflorum rubrum. Deep pink—		
1½ ft.	1 75	16 50
2 ft.	2 00	18 50
2½ ft.	2 50	23 50
* 3 to 3½ ft.	\$5 to 10 00	
President Lincoln. Crimson. 2½ ft.	3 50	32 50
* 3 to 3½ ft.	\$5 to 10 00	
purpureum crispum. Purple crimped—		
2 ft.	2 50	22 50
2½ ft.	\$3.50 to 5 00	
purpureum elegans. Purple. 1½ ft.	1 50	13 50
2 ft.	2 00	18 50
2½ ft.	3 50	32 50
3 to 4 ft.	\$7.50 to 12 00	
purpureum grandiflorum. Purple—		
2 ft.	2 00	18 50
2½ ft.	2 50	23 50
* 3 to 3½ ft.	\$7.50 to 10 00	
roseum elegans. (True.) Clear pink—		
1½ ft.	2 00	18 50
2 ft.	2 50	23 50
2½ ft.	3 50	32 50
* 3 to 5 ft. Specimens	\$7.50 to 25 00	
roseum elegans. Good rose. 1½ ft.	1 50	13 50
2 ft.	2 00	18 50
2½ ft.	3 00	27 50
3 ft.	5 00	48 50
roseum luteum. Pink. 2½ ft.	3 50	33 50
3 ft.	5 00	48 50
roseum superbum. Clear rose. 2½ ft.	3 50	32 50
* 3 to 3½ ft.	\$7.50 to 12 50	
Sefton. Dark maroon. 1½ ft.	2 00	18 50
2 ft.	2 50	23 50
2½ ft.	3 50	32 50
Unnamed Hybrids. 3 to 6 ft. Specimens.		
Prices on application.		

A
N
D
O
R
R
A
I
G
R
O
W
N

* LARGE SIZES FOR IMMEDIATE EFFECT

OTHER SPECIES—ANDORRA-GROWN

	Each	10
RHODODENDRONS, catawbiense. 1½ to 2 ft. per 100, \$135..	\$1 50	\$14 00
2 ft. per 100, \$165..	2 00	18 50
2½ ft. per 100, \$210..	2 50	22 50
3 ft. per 100, \$300..	3 50	33 50
* 3½ to 4 ft. Specimens	\$5 to 15 00	
catawbiense, var. alba. 1½ to 2 ft.....	1 75	16 50
2 to 2½ ft.	2 50	22 50
2½ to 3 ft.	3 50	32 50
maximum. Great Laurel—		
2 to 2½ ft. Nursery grown	2 00	17 50
2½ to 3 ft. Nursery grown	2 50	22 50
3 to 3½ ft. Nursery grown	3 00	28 50
* 3½ to 4 ft. Nursery grown	3 50	33 50
* 4 to 5 ft. Nursery grown	5 00	48 50
maximum, var. roseum. Pink—		
3½ to 5 ft.	\$4.50 to 10 00	
Smirnovii. 1½ ft.	2 50	

DWARF VARIETIES—ANDORRA-GROWN

imbricata. 18 in.	✦.. 2 50	
2 ft.	✦.. 3 50	
myrtifolium. 1 ft.	✦.. 2 00	18 50
2½ ft.	✦.. 3 50	
odoratum. Fragrant. 2 ft.	✦.. 2 50	20 00
2½ ft.	✦.. 3 50	
punctatum. Dotted. 12 in.....	✦.. 1 50	13 50
18 in.	✦.. 2 50	20 00
24 in.	✦.. 3 50	32 50
Wilsonianum (latevirens). 10 to 12 in.✦..	1 50	13 50
15 to 18 in.	✦.. 2 50	23 50
YUCCA filamentosa. Adam's Needle. 4 year.....	50	3 50
glauca. 4 year	50	3 50

RHODODENDRONS

Rhododendrons, to secure the best effects, should be planted in combination with other things. If along the woodland or in heavy boundary plantings, the Hemlock, the White Pine, the Dogwood, native Viburnums and plants of like character tend to break up the monotony of heavy masses of Rhododendrons of the same form and texture; and, where the plantings are more confined, as about the base line of buildings, and in nooks and corners of the garden, the Dogwood, the *Cornus mascula*, *Kalmia*, ferns of different varieties, stronger-growing perennials, and last, but not least, the hardy little shrub, *Abelia rupestris*, all can be used to secure most pleasing effects.

Deciduous Trees

Scarce in these Large Sizes

SUGAR MAPLES. Specimens \$50 00 to \$150 00 Each

This offering is of large trees grown and transplanted at Andorra and now ready to give the shade you need, trees with large, wide-spreading tops and roots to support them. See also page 30.

PURPLE BEECH. Specimens 100 00 to 250 00 Each

Real trees in every sense, our own growing and so offered with confidence that they have the right tops and roots, trees from twenty to thirty feet in height, branched to the ground, with a spread of ten to twenty feet. See also page 35.

HORSE CHESTNUT. Specimens 50 00 to 150 00 Each

Few flowering trees equal these in their display of Spring flower, and their quick growth and shade-giving qualities are well-known. Also see page 31.

SWEET GUM. Specimens 50 00 to 100 00 Each

Neat growth, rich foliage, and superb fall color, three points of merit for this most desirable variety which we offer up to twenty-five feet in height with large well-balanced tops. See also page 36.

RED FLOWERING DOGWOOD. Specimens 15 00 to 25 00 Each

This Spring we offer most interesting sizes of this scarce variety, eight to ten feet in height, and with a spread of from six to eight feet, low branched, with full, broad, dense heads; handled with a ball of earth for safe shipment. See also page 33.

FLOWERING APPLES. Specimens 10 00 to 15 00 Each

The words "Spring" and "Apple-blossoms" are almost synonymous, and how much finer the bloom of these new horticultural sorts than that of the fruiting apples. We have a very few fine pieces of the Pink variety Floribunda. See also page 39.

CORK-BARKED EUONYMUS. Specimens 7 50 to 15 00 Each

The unusual always appeals to us and this unique shrub with its corky bark, salmon pink autumn foliage, and its carmine berries, together with a neat habit appeals to us as a most desirable specimen. See also page 50.



Specimen Norway Maples in Wide Rows.

DECIDUOUS TREES

Large trees have been in demand for many years as purchasers wish quick results. In a great measure the difficulty has been to secure a large tree that would grow as satisfactorily as those of smaller size.

Appreciating the demand for a perfect tree in a large size we have for years devoted great care and large sums of money transplanting trees in unusually large nursery grades, and our customers can depend absolutely upon receiving, with any of the large sizes offered in this list, a root system which makes it practical and desirable to secure the large sizes and get immediate results.

Measurements are given as follows: Height is taken before digging, from the surface of the ground to the top branches, where they round off to form the top; diameter of stem, or caliper, is taken 6 inches above the ground, above the collar. Measurements are expressed thus: 10 to 12 ft. (height), 2½ to 2¾ in. (caliper).

	Each	10	100
ACER saccharinum. Silver Maple. 8 to 10 ft.	\$1 00	\$7 50	\$50 00
8 to 10 ft.; 1½ to 1¾ in.	1 50	10 00	85 00
10 to 12 ft.; 2 to 2¼ in.	2 50	20 00	175 00
12 to 14 ft.; 2½ to 2¾ in.	3 50	30 00	225 00
A rapid grower for immediate effects.			
saccharinum, var. pyramidalis. Pyramidal Silver Maple—			
10 to 12 ft., 1½ to 2 in.	2 50	22 50	
saccharinum, var. Wierii laciniatum. Wier's Cut-leaved Silver Maple—			
8 to 10 ft.	1 50	13 50	
10 to 12 ft.; 2 to 2¼ in.	2 50	20 00	175 00
12 to 14 ft.; 2½ to 2¾ in.	3 50	30 00	225 00
Specimens. 4 to 5 in.	\$7.50 to 25 00		

ALL GOODS F. O. B. HERE AT LIST PRICES

DECIDUOUS TREES

	Each	10	100
ACER Negundo. Ash-leaved Maple. 7 to 8 ft..	\$1 00	\$7 50	\$50 00
8 to 10 ft.; 1½ to 2 in. cal.....	1 50	10 00	85 00
* 10 to 14 ft.; 3 to 5 in. ..	\$3.50 to 7 50		
pennsylvanicum. 4 to 5 ft.....	1 00	8 50	
platanoides. Norway Maple—			
8 to 10 ft.; 1 to 1¼ in.	1 00	7 50	50 00
8 to 10 ft.; 1¼ to 1½ in.	1 50	10 00	60 00
10 to 12 ft.; 1¾ to 2 in.	1 75	13 50	115 00
10 to 12 ft.; 2 to 2¼ in.	2 00	17 50	150 00
12 ft.; 2¼ to 2½ in.	2 50	20 00	165 00
12 to 14 ft.; 2½ to 2¾ in.	3 50	27 50	250 00
12 to 14 ft.; 2¾ to 3 in.	4 00	32 50	275 00
14 to 16 ft.; 3¼ to 3½ in.	5 00	47 50	400 00
14 to 16 ft.; 3½ to 3¾ in.	6 00	50 00	
* 14 to 16 ft.; 3¾ to 4 in.	7 50	60 00	
* 14 to 16 ft.; 4¼ to 5 in. .	\$10 to 20 00		
* 14 to 20 ft.; 5½ to 7 in. .	\$25 to 150 00		
platanoides, var. purpurea. Schwedler's Purple Maple—			
8 to 10 ft.; 1½ to 1¾ in.	1 75	15 00	135 00
10 to 12 ft.; 1¾ to 2 in.	2 00	18 50	175 00
10 to 12 ft.; 2½ to 2¾ in.	3 50	32 50	
12 to 14 ft.; 2¾ to 3 in.	5 00		
14 to 16 ft.; 3½ to 4 in. .	\$7.50 to 10 00		
* 16 to 20 ft.; 5 to 10 in. .	\$25 to 150 00		
platanoides, var. Reitenbachi. Reitenbach's Purple Maple—			
6 to 7 ft.	1 00	8 50	
pseudo platanus. European Sycamore Maple. 8 to 10 ft.; 1½ to 1¾ in. .	1 50	12 50	
10 to 12 ft.; 2 to 2½ in.	2 00	17 50	
12 to 14 ft.; 2¾ to 3 in.	3 50	32 50	
* 14 to 30 ft. Specimens .	\$25 to \$175 00		
pseudoplatanus, var. purpurea. Purple Sycamore Maple. Specimens—			
25 to 30 ft.; 6 to 10 in. cal.			
Broad-headed specimen trees. Prices on application.			
rubrum. Red or Scarlet Maple—			
8 to 10 ft.; 1½ to 1¾ in.	1 50	13 50	125 00
10 to 12 ft.; 1½ to 1¾ in.	2 00	17 50	165 00
12 to 14 ft.; 2 to 2¼ in.	3 00	28 50	275 00
* 14 to 16 ft.; 3 to 4 in. .	\$7.50 to 15 00		
saccharum. Sugar Maple—			
10 to 12 ft.; 1½ to 1¾ in.	1 50	12 50	85 00
10 to 12 ft.; 1½ to 1¾ in.	2 00	17 50	135 00
12 to 14 ft.; 2 to 2¼ in.	2 50	22 50	200 00
12 to 14 ft.; 2½ to 2¾ in.	3 50	32 50	300 00
12 to 14 ft.; 2¾ to 3 in.	5 00	45 00	
* 14 to 16 ft.; 3 to 3¼ in. .	\$5 to 7 50		
* 14 to 25 ft.; 3½ to 8 in. .	\$10 to 150 00		
spicatum. Mountain Maple. 4 to 5 ft..	1 00	7 50	50 00
tataricum, var. ginnala. Tartarian Maple—			
2 to 3 ft.	75	5 00	30 00
4 to 5 ft.	1 00	9 00	75 00
5 to 6 ft.	1 50	13 50	100 00
tataricum, var. rubrum. 2 to 3 ft.....	75	5 00	40 00
3 to 4 ft.	1 00	9 00	75 00
5 to 6 ft.	1 50	13 50	100 00

* LARGE SIZES FOR IMMEDIATE EFFECT

	Each	10	100
ACER palmatum, var. aureum. Golden Japanese Maple. 2 ft.....	\$2 00	\$18 50	
2½ ft.	2 50	22 50	
* 3 to 3½ ft.	3 50	32 50	
palmatum, var. filicifolium. 10 to 12 ft..	15 00		
* polymorphum, 4 to 5 ft.	\$2.50 to 3 50		
5 to 6 ft.	5 00		
polymorphum, var. atropurpureum. Blood-leaved Japan Maple—			
1½ to 2 ft.	*.. 1 50	13 50	
2 to 2½ ft.	*.. 2 00	18 00	
* 3 to 5 ft. Specimens. Bushy and well furnished	\$3.50 to 15 00		
polymorphum, var. atropurpureum dissectum. Weeping Cut-leaf Blood-leaved. 1½ ft.	*.. 1 50	13 50	
2 to 2½ ft. Specimens.	*.. \$2.50 to 3 50		
Specimens, 3 to 6 ft. spread,	\$5 to 25 00		
Tall standards, 4 to 5 ft. stem and broad heads.....	\$15 to 25 00		
polymorphum, var. atropurpureum nigrum—			
* 5 to 8 ft. Specimens	\$20 to 35 00		
polymorphum, var. dissectum. Cut-leaf Weeping Japan Maple. 1½ ft.	*.. 1 50	13 50	
2 to 2½ ft.	*.. \$2.50 to 3 50		
2½ to 3 ft. Specimens.....	\$5 to 7 50		
ÆSCULUS carnea (rubicunda). Red-flowered Horse-chestnut—			
7 to 8 ft.; 1¾ to 2 in.	2 50	22 50	
10 ft.; 2 to 2¼ in.	3 50	32 50	
* 12 to 18 ft.; 3 in.	*.. 5 00		
Specimens. See page 28.			
Hippocastanum. European Horse-chestnut. 8 to 10 ft.; 1¾ in.....	1 50	12 50	
10 to 12 ft.; 2 to 2¼ in.	2 50	17 50	
12 to 14 ft.; 2½ to 2¾ in.	3 50	27 50	
* 14 to 16 ft.; 3 to 5 in. ..	\$5 to 35 00		
Specimens. See page 28.			
Hippocastanum, var. alba flore pleno. Double White-flowered Horse-Chestnut. 8 to 9 ft.; 1¾ to 2 in... ..	2 00	18 50	\$175 00
9 to 10 ft.; 2¼ to 2½ in.	3 50	30 00	200 00
* 12 to 16 ft.; 3 to 4 in... ..	\$5 to 15 00		
Specimens. See page 28.			
AILANTHUS glandulosa. Tree of Heaven—			
10 to 12 ft.; 1½ to 2 in.	1 00	8 50	60 00
12 to 14 ft.; 2 to 3 in.	1 25	10 00	75 00
14 to 16 ft.; 3 to 3½ in.	2 50	20 00	
ALNUS glutinosa. European, or Black Alder—			
10 to 12 ft.; 1 to 1½ in.	1 00	8 50	65 00
10 to 12 ft.; 1½ to 2 in.	1 50	12 50	85 00

DECIDUOUS TREES

	Each	10	100
AMELANCHIER <i>laevis</i> (<i>canadensis</i>). June Berry—			
3 to 4 ft.	\$0 50	\$3 50	\$25 00
4 to 5 ft.	75	5 00	40 00
5 to 6 ft.	1 00	7 50	60 00
ANDROMEDA. See <i>Oxydendron</i> .			
ARALIA <i>japonica</i> (<i>Fatsia</i>). Chinese Angelica			
Tree. 4 to 5 ft.....	50	3 50	
5 to 6 ft.	75	6 50	
6 to 8 ft.	1 00	8 50	
<i>pentaphylla</i> . See <i>Acanthopanax spinosa</i> —			
<i>spinosa</i> . 6 to 8 ft.	1 00	8 50	60 00
BETULA <i>alba</i> . European White Weeping Birch—			
6 to 8 ft.	1 00	7 50	
8 to 10 ft.	1 50	10 00	
10 to 12 ft.; 1½ to 2 in.	2 00		
<i>alba</i> , var. <i>laciniata pendula</i> . Weeping Cut-leaved White Birch. 8 to 10 ft.	1 50	12 50	
<i>alba</i> , var. <i>purpurea</i> . Purple foliage—			
8 to 10 ft.	1 50	13 50	
<i>lenta</i> . Sweet Birch. 8 to 10 ft.	1 50	13 50	
<i>lutea</i> . Yellow Birch. 8 to 10 ft.....	1 25	10 00	85 00
10 to 12 ft.	1 50	13 50	100 00
<i>papyrifera</i> . Paper, or Canoe Birch—			
8 to 10 ft.	1 25	10 00	60 00
10 to 12 ft.	1 50	13 50	85 00
<i>populifolia</i> . American White Birch—			
8 to 10 ft.	1 25	10 00	75 00
10 to 12 ft.	1 50	13 50	100 00
<i>nigra</i> ; syn., <i>rubra</i> . Red Birch. 6 to 7 ft.	1 00	7 50	60 00
7 to 8 ft.	1 50	10 00	75 00
CARAGANA. (Siberian Pea Tree.) 5 to 6 ft..	1 00	7 50	50 00
Standards in varieties. 4 to 5 ft.†..	3 50		
CARPINUS <i>caroliniana</i> . American Hornbeam—			
3 to 4 ft.	75	6 50	60 00
4 to 5 ft. Bushy	1 00	8 50	75 00
* 8 to 12 ft. Specimens ..	\$2.50 to 15 00		
<i>Betulus</i> . European Hornbeam—			
2 to 3 ft. Heavy	50	4 50	40 00
3 to 4 ft. Bushy	75	6 50	60 00
7 to 12 ft. Specimens ..	\$3.50 to 25 00		
CARYA <i>alba</i> . See <i>Hicoria</i> .			
CATALPT <i>bignonioides nana</i> . Bunge's Catalpa.			
Standards. 7 to 8 ft.....	2 50	22 50	
Specimens	\$3.50 to 5 00		
<i>speciosa</i> . Western Catalpa—			
10 to 12 ft.; 1½-1¾ in.	1 50	10 00	75 00
CEDRELA <i>sinensis</i> . Chinese Cedrela—			
7 to 8 ft.	1 50	13 50	
CELTIS <i>occidentalis</i> . Nettle Tree. 6 to 8 ft....	1 50	13 50	

* LARGE SIZES FOR IMMEDIATE EFFECT

DECIDUOUS TREES

Each 10 100

CERASUS (<i>Prunus</i>) s.c. avium , var. alba plena . Double White-flowering Cherry.			
* 8 to 9 ft.	\$3 50		
avium , var. rosea plena . Double Pink-flowering Cherry. 6 to 7 ft...	2 50		
avium , var. rosea pendula . Pink Weeping Japan Cherry. 6 to 7 ft....	3 50		
Padus . European Bird Cherry—			
8 to 10 ft.	1 00	\$8 50	
10 to 12 ft.	1 50	12 50	
serotina . Wild Black Cherry—			
8 to 10 ft.	1 50	12 50	
Sieboldi , var. rubra plena . 4 to 5 ft....	1 50	13 50	
CERCIS canadensis . Red Bud, American Judas—			
4 to 5 ft.	50	4 00	\$35 00
5 to 6 ft.	75	6 00	50 00
* 6 to 7 ft.	1 00	7 50	60 00
* 8 to 9 ft. Heavy clumps ..	\$5 to 10 00		
Japonica . See <i>Shrubs</i> .			
CERCIDIPHYLLUM japonicum . 4 to 5 ft.....	1 50	12 50	
5 to 6 ft.	2 50	23 50	
7 to 8 ft.	5 00	48 50	
8 to 10 ft.	7 50	70 00	
10 to 14 ft. Specimens...\$10 to 100 00			
CLADRASTIS lutea (<i>Virgilia lutea</i>). Yellow Wood. 8 to 10 ft.....	2 50	22 50.	
10 to 12 ft.....	3 50	32 50	
12 to 16 ft. Specimens.....\$5 to 7 50			
CORNUS . See, also, <i>Shrubs</i> .			
florida . White Dogwood—			
3½ to 4 ft.	1 00	7 50	50 00
4 to 5 ft.	1 25	10 00	60 00
5 to 6 ft.	1 50	12 50	85 00
7 to 8 ft.	2 50	23 50	
* 8 to 10 ft.\$3.50 to 5 00			
* 8 to 10 ft. Standards	\$5 to 7 50		
florida , var. flore rubra . Red-flowered Dogwood. 3 to 4 ft.....	2 50	20 00	
4 to 5 ft. Bushy	3 00	27 50	
5 to 6 ft. Bushy	3 50		
* 6 to 7 ft. Specimens	5 00		
* 7 to 8 ft. Specimens..	\$10 to 15 00		
* 8 to 10 ft. Broad Specimens	\$20 to 25 00		

The Red-flowered Dogwood offered here are a handsome lot, grown well apart, frequently transplanted. Now perfect—symmetrical specimens. This Dogwood is one of the most beautiful trees, as in addition to its pink bloom in spring it retains all the desirable characteristics of the White Dogwood.

florida , var. pendula . Weeping Dogwood—			
* 10 to 12 ft. Rare	25 00		
Kousa . Japan Dogwood. Rare—			
4 to 5 ft.	2 50	23 50	
* 5 to 6 ft.	3 50	32 50	
* 6 to 7 ft.	5 00	45 00	
* 7 to 8 ft.	6 00	50 00	

ALL LARGE DOGWOOD BALLED AND BURLAPPED

DECIDUOUS TREES

	Each	10	100
CRATÆGUS Carrieri. 5 to 6 ft.....	\$1 25	\$10 00	\$85 00
6 to 7 ft.....	1 50	12 50	100 00
* 7 to 8 ft.....	2 50	22 50	
coccinea. 3 to 4 ft.....	75	6 00	50 00
4 to 5 ft.....	1 00	7 50	65 00
5 to 6 ft.....	1 50	10 00	85 00
8 to 9 ft.....	2 50	22 50	
cordata. Washington Thorn—			
4 to 5 ft. Heavy.....	1 00	8 50	
5 to 6 ft. Heavy.....	1 50	12 50	
6 to 7 ft. Heavy.....	2 00	18 50	
* 7 to 8 ft. Heavy.....*	2 50	22 50	
* 8 to 10 ft. Specimens.....*	3 50	32 50	
Crus-galli. Cockspur Thorn—			
3 to 4 ft.....	75	6 00	50 00
4 to 5 ft.....	1 00	6 50	60 00
5 to 6 ft.....	1 50	10 00	85 00
* 7 to 8 ft.....*	3 50	32 50	
* 8 to 10 ft.....*	5 00	45 00	
flava. Yellow Haw. 7 to 8 ft.....	2 50		
Oxyacantha. English Hawthorn—			
5 to 6 ft.....	1 00	8 50	
6 to 7 ft.....	1 50	10 00	
Oxyacantha, var. alba flore pleno. Double White Hawthorn. 3 to 4 ft... 75	75	6 50	
4 to 5 ft.....	1 00	8 50	
7 to 8 ft.....	3 50	32 50	
Oxyacantha, var. coccinea flore pleno. Paul's Double Scarlet—			
4 to 5 ft.....	1 00	9 00	85 00
6 to 7 ft.....	2 00	17 50	135 00
7 to 8 ft.....	3 50	32 50	
* 8 to 10 ft. Standards.....	7 50		
* 12 to 14 ft. Standards.....	12 50		
Oxyacantha, var. rosea flore pleno. Double Pink Hawthorne. 3 to 4 ft.. 75	75	6 50	
4 to 5 ft.....	1 00	8 50	
punicea. (Deep red flowers.) 8 to 10 ft. 3 50	3 50	32 50	
punicea fl. pl. (Double). 5 to 6 ft..... 1 50	1 50	13 50	
CYTISUS Laburnum. Golden Chain. See <i>Laburnum vulgare (cytisus)</i> . Golden Chain.			
DIOSPYROS virginica. Persimmon. 5 to 6 ft..			
6 to 8 ft.....			
FAGUS americana. American Beech. 2½ to 3 ft. 1 50	1 50	13 50	
4 to 5 ft.....	2 50	23 50	
5 to 6 ft.....	3 50	33 50	
6 to 7 ft.....	5 00	42 50	
sylvatica. European Beech. 2 to 2½ ft.. 1 00	1 00	7 50	50 00
3 to 4 ft.....	1 50	10 00	75 00
4 to 5 ft.....	2 00	15 00	90 00
5 to 6 ft.....	2 50	22 50	
6 to 7 ft.....*	3 50	32 50	
* 9 to 12 ft. Specimens.....\$10 to 25 00	\$10 to 25 00		
sylvatica, var. asplenifolia. Fern-like Beech. 3 to 4 ft..... 2 50	2 50	23 50	

* LARGE SIZES FOR IMMEDIATE EFFECT

DECIDUOUS TREES

	Each	10	100
FAGUS <i>sylvatica</i> , var. <i>grandidentata</i> . 5 to 6 ft.	\$5 00		
8 to 9 ft. Specimens	10 00		
<i>sylvatica</i> , var. <i>pendula</i> . Weeping Beech—			
5 to 6 ft.	3 50		
10 to 12 ft.	7 50		
* 16 to 18 ft. Specimens	\$50 to 75 00		
<i>sylvatica</i> , var. <i>purpurea</i> . Purple Beech—			
4 to 5 ft.	2 50	\$23 50	
5 to 6 ft.	3 50	32 50	
6 to 7 ft.	5 00	47 50	
7 to 8 ft.	7 50		
* 9 to 10 ft. Specimens	..\$10 to 12 50		
* 11 to 12 ft. Specimens	..\$15 to 25 00		
* 12 to 25 ft. Specimens	..\$25 to 250 00		
<i>sylvatica</i> , var. <i>purpurea major</i> . Large			
Leaf. 5 to 6 ft.	3 50		
6 to 7 ft.	5 00		
* 7 to 8 ft.	7 50		
<i>sylvatica</i> , var. <i>Riversi</i> . Rivers' Blood-			
leaved Beech. 5 to 6 ft.	3 50	32 50	
* 7 to 8 ft.	7 50		
* 8 to 10 ft.	..\$7.50 to 10 00		
10 to 12 ft.	15 00		
FATSIA <i>japonica</i> . See <i>Aralia</i> .			
FRAXINUS <i>americana</i> . White Ash. 7 to 8 ft.	1 00	7 50	\$50 00
8 to 10 ft.	1 50	8 50	65 00
10 to 12 ft.; 1½ to 2 in.	2 00	13 50	100 00
12 to 14 ft.; 2¼ to 2½ in.	2 50	23 50	
Ornus. Flowering Ash. 5 to 6 ft.	1 00	8 50	
7 to 8 ft.	1 50	13 50	
<i>lanceolata</i> . Green Ash. 7 to 8 ft.	1 00	9 00	65 00
8 to 10 ft.; 1½ to 1¾ in.	1 50	13 50	100 00
10 to 12 ft.; 1¾ to 2 in.	2 00	15 00	
GLEDITSCHIA <i>aquatica</i> . Water Locust. 7 to 8 ft.	75	6 00	50 00
8 to 10 ft.	1 00	8 00	75 00
triacanthos. Honey Locust. 4 to 5 ft.	50	4 00	25 00
5 to 6 ft.	75	5 00	35 00
7 to 8 ft.	1 00	6 50	50 00
GYMNOCLADUS <i>dioica</i> . Kentucky Coffee Tree—			
8 to 10 ft.; 1½ to 1¾ in.	1 50	10 00	
10 to 12 ft.; 1¾ to 2 in.	1 75	15 00	
12 to 14 ft.; 2¼ to 2½ in.	2 00	18 50	
HALESIA <i>tetraptera</i> . Snowdrop Tree—			
4 to 5 ft.	1 00	7 50	
HICORIA <i>alba</i> (<i>carya</i>). Hickory. 4 to 5 ft.	1 00	8 50	
8 ft.	2 50		
JUGLANS <i>nigra</i> . Black Walnut. 3 to 4 ft.	75	3 50	25 00
6 to 8 ft.	1 00	7 50	60 00
8 to 10 ft.	1 50	12 50	100 00
<i>regia</i> . English Walnut. 3 to 3½ ft.	1 00	7 50	
8 to 9 ft.	3 50		
<i>Sieboldiana</i> . Japan Walnut. 6 to 7 ft.	1 50	12 50	
7 to 8 ft.	2 00	18 50	
* 10 to 12 ft.	2 50	23 50	
* 12 to 14 ft.	3 50	32 50	

ALL GOODS F. O. B. HERE AT LIST PRICES



An Avenue of Sweet Gums (Liquidambar), at Andorra.

	Each	10	100
KÆLREUTERIA paniculata. Varnish Tree—			
7 to 8 ft.	\$2 00	\$18 50	
8 to 10 ft.	3 50	32 50	
* 10 to 12 ft. Heavy	5 00		
LABURNUM vulgare. Golden Chain—			
5 to 6 ft.	1 00	7 50	
6 to 7 ft.	1 50	10 00	
7 to 8 ft.	2 50	20 00	
vulgare pendula. 10 to 12 ft.....	10 00		
LARIX Europæa. European Larch. 4 to 5 ft..	75	6 00	
5 to 6 ft.	1 00	7 50	
leptolepis. Japanese Larch. 4 to 5 ft.	1 00	8 50	\$75 00
5 to 6 ft.	1 50	13 50	100 00
7 to 8 ft.	2 50	20 00	
leptolepis pyramidalis. 4 to 5 ft.....	1 50	12 50	
LIQUIDAMBAR. Sweet Gum. 6 to 7 ft.....	1 50	12 50	85 00
7 to 8 ft.; 2 to 2½ in.	2 50	22 50	175 00
8 to 10 ft.; 2½ to 2¾ in.	3 00	27 50	
10 to 12 ft.; 2¾ to 3 in.	4 00	37 50	
* 12 to 14 ft.; 3 to 3½ in.	5 00	47 50	
* 16 to 20 ft. Specimens. See page 28.			
LIRIODENDRON Tulipifera. Tulip Tree. 7 to 8 ft.	1 00	8 50	65 00
8 to 9 ft.; 1¼ to 1½ in.	1 50	10 00	85 00
10 to 12 ft.; 1½ to 2 in.	1 75	15 00	135 00
* 10 to 12 ft.; 2½ to 4 in. ...	\$2 to 5 00		
MAGNOLIA. Native Sorts—			
acuminata. Cucumber Tree—			
5 to 6 ft.	1 00	7 50	
7 to 8 ft.	1 50	13 50	
glauca. Sweet or Swamp Magnolia—			
3 to 3½ ft. Bushy	* 2 00		
* 4 to 5 ft. Bushy	3 00		
* 5 to 6 ft. Bushy	3 50		

* LARGE SIZES FOR IMMEDIATE EFFECT

DECIDUOUS TREES

	Each	10	100
MAGNOLIA grandiflora. Evergreen Magnolia—			
* 4 to 5 ft.	\$3 50	\$32 50	
<i>hypoleuca.</i> Japan. 4 to 5 ft.....	2 50	23 50	
7 to 8 ft.	5 00	45 00	
<i>macrophylla.</i> Great-leaved Magnolia—			
5 to 6 ft.....	5 00		
<i>tripetala.</i> Umbrella Tree. 6 to 7 ft... 1 00		7 50	
7 to 8 ft.	1 50	13 50	
8 to 12 ft.	\$2 to 3 50		
Chinese Sorts—			
<i>alba superba.</i> White—			
3 to 4 ft.	2 50		
<i>Alexandriana.</i> Pink (Early)—			
4 to 5 ft.	3 50	32 50	
5 to 6 ft.	5 00	47 50	
7 to 8 ft.	7 50	65 00	
<i>conspicua.</i> White			
3 to 4 ft.	5 00	45 00	
<i>Kobus.</i> 3 to 4 ft.....	2 50	22 50	\$200 00
4 to 5 ft.	3 50		
<i>Lennei Hybrid.</i> Lenne's Magnolia—			
4 to 5 ft.	3 50	32 50	
5 to 6 ft.	5 00	45 00	
* 6 to 7 ft.	6 00	55 00	
* 8 to 10 ft.	7 50	72 50	
<i>purpurea; syn., obovata.</i> Purple Magnolia. 5 to 6 ft.....	3 50		
<i>Soulangeana Hybrid.</i> Soulange's Magnolia. Pink. 3 to 3½ ft.....	2 50	22 50	
4 to 5 ft.	3 50	32 50	
5 to 6 ft.	5 00	45 00	
6 to 7 ft.	6 00	55 00	
* 7 to 8 ft.	7 50	72 50	
<i>Soulangeana, var. nigra.</i> 4 to 5 ft....	3 50	33 50	
5 to 6 ft.	5 00	47 50	
<i>speciosa.</i> 6 to 7 ft.....	5 00	45 00	
<i>stellata.</i> Hall's Magnolia. 2 ft....	2 50	22 50	
2½ ft.	3 50	32 50	
3 to 3½ ft.	5 00	47 50	
* 4 to 6 ft.	\$7.50 to 15 00		
MORUS alba. White Mulberry. 7 to 8 ft....	1 00	7 50	
<i>alba, var. globosa.</i> Globe Standard—			
6 ft.	2 00		
<i>alba rubra.</i> Red Russian. 7 to 8 ft... 1 00		7 50	
<i>alba pendula.</i> Teas' Weeping Mulberry—			
6 ft. Specimens	\$2.50 to 5 00		
NEGUNDO. See <i>Acer.</i>			
NYSSA sylvatica. Sour Gum. 4 to 5 ft.....	1 50	13 50	
5 to 6 ft.	1 75	15 00	
6 to 7 ft.	2 00	18 50	

SPRING AND FALL PRICE LISTS

This Price List is revised semi-annually so as to conform to our actual stock records and is published for the convenience of large users of nursery stock. We are not jobbers, but the largest nursery growing high-class stock for discriminating buyers.



An Avenue of "Andorra-grown" Oriental Planes.

	Each	10	100
OXYDENDRUM arboreum; syn., Andromeda arborea. Sorrel Tree. 3 to 4 ft.	\$1 00	\$7 50	\$60 00
4 to 5 ft.	1 50	12 50	90 00
5 to 6 ft.	2 00	15 00	100 00
* 6 to 7 ft.	2 50	17 50	125 00
* 7 to 8 ft.	3 50		
PARROTIA persica. Persian Iron Tree—			
5 to 6 ft.	3 50		
Jacquemontiana. 1½ to 2 ft.	1 00	7 50	
PERSICA amygdalus vulgaris, var. alba plena. Double White-flowering Peach—			
5 to 6 ft.	1 00	7 50	
vulgaris, var. sanguinea plena. Double Red-flowering Peach. 5 to 6 ft.	1 00	7 50	
PLATANUS occidentalis. American Buttonwood—			
6 to 7 ft.	1 25	10 00	75 00
12 to 14 ft.; 2 to 2½ in.	2 50	22 50	
orientalis. Oriental Plane, or European Buttonwood. 6 to 8 ft.	1 00	7 50	50 00
8 to 10 ft.; 1¼ to 1½ in.	1 25	10 00	60 00
10 to 12 ft.; 1½ to 1¾ in.	1 50	12 50	80 00
10 to 12 ft.; 1¾ to 2 in.	1 75	15 00	100 00
10 to 12 ft.; 2 to 2¼ in.	2 50	22 50	150 00
* 12 to 14 ft.; 2½ to 2¾ in.	3 50	32 50	200 00
* 14 ft.; 3 to 4 in. Specimens. \$5 to 10 00			
Splendid Trees repeatedly transplanted and pruned; especially good in tops and roots.			

* LARGE SIZES FOR IMMEDIATE EFFECT

DECIDUOUS TREES

	Each	10	100
POPULUS Bolleana. Bolle's Poplar. 10 to 12 ft.	\$1 75	\$15 00	
* 12 to 14 ft.	2 50	20 00	
carolinensis. Carolina Poplar. 8 to 10 ft.	75	5 00	
10 to 12 ft.	1 00	8 50	
nigra Italica. Lombardy Poplar—			
10 to 12 ft.; 1½ to 1¾ in.	1 25	10 00	
12 to 14 ft.; 2 to 2¼ in.	1 50	13 50	
14 to 16 ft.; 2½ in.	2 50	18 50	
16 to 20 ft.; 3 to 4 in....	\$3.50 to 5 00		
PRUNUS. See, also, <i>Cerasus</i> .			
cerasifera pissardii. Purple Plum—			
5 to 6 ft. Specimens	1 50	12 50	
triloba. Flowering Plum. 3 to 4 ft....	75	5 00	
PYRUS (<i>Malus</i>) s.c. See also, <i>Shrubs</i> .			
baccata. Siberian Flowering Crab			
Apple. 5 to 6 ft.....	2 00	18 50	
coronaria. Sweet-scented Crab—			
5 to 6 ft.	2 00	17 50	
floribunda. Flowering Crab. 4 to 5 ft..	1 50	13 50	
5 to 6 ft.	2 00	18 50	
floribunda, var. atrosanguinea. 5 to 6 ft.	1 50	13 50	
6 to 7 ft. Specimens.....	10 00		
lœnsis, var. Bechtel. Bechtel's Double			
flowering Crab. 4 to 5 ft....	2 50	23 50	
5 to 6 ft.	3 50	33 50	
6 to 7 ft. Specimens	5 00		
Parkmani; syn., Halliana. Parkman's			
Crab. 4 to 5 ft.....	1 50	13 50	
Scheideckeri (Double-flowered)—			
4 to 5 ft.	1 50	13 50	
5 to 6 ft.	3 50	33 50	
spectabilis (Chinese Double-flowering			
Crab.) 4 to 5 ft.....	1 50	13 50	
Toringo (Dwarf Crab.) 3 to 4 ft.....	2 50		
QUERCUS (Oaks). See page 40.			
RHUS glabra. Smooth Sumac. 3 to 4 ft.....	50	4 00	
4 to 5 ft.	75	5 00	
5 to 6 ft.	85	6 00	\$40 00
7 to 8 ft.	1 00	7 00	50 00
glabra, var. laciniata. Cut-leaved Sumac—			
2 to 2½ ft.	50	4 00	25 00
5 to 6 ft.	1 00	6 50	40 00
javanica (Osbecki). Osbeck's Sumac—			
5 to 6 ft.	75	6 00	50 00
7 to 8 ft.	1 00	8 50	60 00
javanica (Osbecki), var. laciniata.			
5 to 6 ft.	1 00	7 50	
typhina. Staghorn Sumac. 2 to 3 ft...	50	4 00	25 00
5 to 6 ft.	1 00	8 50	50 00
6 to 8 ft.	1 50	10 00	65 00
typhina, var laciniata. (Cut-leaved)—			
5 to 6 ft.	75	6 00	35 00
6 to 8 ft.	1 50	10 00	75 00

ALL GOODS F. O. B. HERE AT LIST PRICES

DECIDUOUS TREES

	Each	10	100
ROBINIA Pseudacacia. Black Locust—			
10 to 12 ft.	\$2 00	\$10 00	
12 to 14 ft.	2 50	15 00	
QUERCUS alba. White Oak—			
6 to 7 ft.; 1 to 1½ in.	2 50	22 50	
7 to 8 ft.; 1½ in.	3 50	32 50	
9 to 10 ft.; 2 in.	3 50	33 50	
bicolor. Swamp White Oak—			
* 14 to 16 ft.; 3¼ to 7 in...\$10 to 50 00			
Large sizes, 4½ to 7 in., with ball.			
Cerris. Turkey Oak—			
4 to 5 ft.	2 00	18 50	
6 to 8 ft.	3 50		
coccinea. Scarlet Oak. 6 to 7 ft....	2 50	22 50	
7 to 8 ft.	3 00	28 50	
8 to 9 ft.; 1¾ in.	3 50	33 50	
9 to 10 ft.; 2 in.	4 00	38 50	
14 to 16 ft.; 4 to 6 in., with ball	\$25 to 75 00		
laurifolia. Laurel-leaved. 8 to 10 ft...	3 50	32 50	
macrocarpa. Mossy Cup Oak—			
6 to 7 ft.; 1 in. cal.	1 75	16 50	
7 to 8 ft.; 1½ in. cal.	2 50	23 50	
8 to 10 ft.; 2 in. cal.	3 50	33 50	
palustris. Pin Oak—			
6 to 7 ft.; 1¼ to 1½ in. Low-branched	1 50	13 50	\$135 00
7 to 8 ft.; 1½ to 1¾ in. Low-branched	2 00	17 50	175 00
8 to 9 ft.; 1¾ to 2 in. Low-branched	2 50	22 50	225 00
10 to 12 ft.; 2 to 2¼ in. Low-branched	3 00	28 50	275 00
10 to 12 ft.; 2½ to 2¾ in. Low-branched	3 50	32 50	
* 3 to 3¾ in.	\$5 to 12 50		
* 4 to 8 in. Extra heavy specimens, well-rooted and good tops.	\$15 to 150 00		
Prinus. Rock Chestnut Oak—			
8 to 10 ft.; 1½ to 1¾ in.	2 00	18 50	
10 to 12 ft.; 2 in.	2 50	23 50	
* 12 to 14 ft.; 3 to 4½ in...\$3.50 to 15 00			
Robur. English Oak—			
10 to 12 ft.; 2 to 2¼ in.	2 50	22 50	
12 to 14 ft.; 2½ to 2¾ in.	3 50	32 50	
* 3 to 6 in. cal. Specimens.	\$5 to 25 00		
Robur, var. Concordia. Golden Oak—			
8 to 10 ft.; 1 to 1¼ in.	3 50		
10 to 12 ft.; 1½ in.	5 00		
Robur, var. fastigiata (Pyramidal Oak)—			
3 to 4 ft.	2 50	22 50	
rubra. Red Oak. 7 to 8 ft....	1 75	16 50	150 00
8 to 9 ft.; 1¼ to 1½ in.	2 00	18 50	175 00
10 to 12 ft.; 1½ to 1¾ in.	2 50	20 00	185 00
10 to 12 ft.; 2 to 2¼ in.	3 50	30 00	285 00
12 to 14 ft.; 2¾ to 3 in.	\$5 to 7 50		
* 14 to 16 ft.; 3½ to 8 in..\$10 to 150 00			
velutina. Black Oak—			
8 to 10 ft.; 1¾ to 2 in.	1 75	15 00	
10 to 12 ft.; 2 to 2¼ in.	2 00	18 50	
12 to 14 ft.; 2½ to 2¾ in.	2 50	22 50	
* 3 to 5 in. Specimens..\$3.50 to 50 00			

TRANSPLANTED OAKS

DECIDUOUS TREES

	Each	10	100
SALISBURIA adiantifolia. Ginkgo, or Maidenhair			
Tree. 7 to 8 ft.; 1 to 1¼ in.....	\$1 50	\$13 50	\$100 00
8 to 9 ft.; 1¼ to 1½ in.....	2 00	17 50	125 00
10 to 12 ft.; 1½ to 1¾ in.....	2 50	20 00	175 00
12 to 14 ft.; 2¼ to 2½ in.....	3 50	32 50	285 00
* 12 to 14 ft.; 2½ to 3 in.....	5 00		
* 15 to 20 ft.; 3½ to 5 in. Specimens	\$7.50 to 25 00		
SALIX alba. (White Willow). 10 to 12 ft.	2 50	15 00	
babylonica. Weeping Willow—			
7 to 8 ft.	1 00	8 50	
8 to 10 ft.	1 50	13 50	
10 to 12 ft.	2 00	18 50	
elegantissima. 12 to 14 ft.	3 50	32 50	
lutea. Golden Willow. 7 to 8 ft.	1 00	8 50	75 00
10 to 12 ft.	1 50	13 50	
lutea, var. pendula. Golden Weeping—			
10 to 12 ft.	2 50	23 50	
pentandra. Laurel Leaf Willow—			
12 to 14 ft. 2 to 2¼ in.	2 50	22 50	
regalis (Royal Willow). 7 to 8 ft.	1 00	8 50	60 00
16 to 18 ft. Heavy	5 00		
vitellina, var. Britzensis. Salmon-barked Willow. 10 to 12 ft.	2 50	23 50	
SASSAFRAS variifolium (Sassafras). 6 to 8 ft.	1 50	12 50	
8 to 10 ft.	2 00	18 50	
SOPHORA japonica. (Sophora.) 6 to 7 ft.	2 50		
SORBUS americana. American Mountain Ash—			
7 to 8 ft.	1 50		
Aucuparia. European Mountain Ash—			
7 to 8 ft.	1 00	9 00	
Aucuparia, var. pendula. (Weeping Mt. Ash.) 6 to 7 ft.	2 50		
TAXODIUM distichum. Deciduous Cypress—			
4 to 5 ft.	1 50	10 00	
5 to 6 ft.	2 50		
distichum pendula. (Weeping Cypress)—			
8 to 9 ft.	5 00		

BECHTEL'S DOUBLE FLOWERING CRAB APPLE

One of the most ornamental of recent introductions and a flowering Apple deserving of a place in every garden. Planted as a specimen or in the border with other strong-growing shrubs, it makes an ideal tree. It is of good growth, with dark, rather glossy, foliage and beautiful double flowers of delicate blush, or shell-pink color and highly fragrant. See page 39.



European Linden.

Few trees are as deserving of their popularity as the small-leaved European Linden. While not the most rapid it is a good grower—very symmetrical—clean stems, and most attractive dark foliage.

TILIA americana.	American Linden or Bass-	Each	10	100
	wood. 8 to 10 ft.; 2 in.	\$2 00	\$17 50	
	10 to 12 ft.; 2 $\frac{1}{4}$ to 2 $\frac{1}{2}$ in.	2 50	22 50	
	10 to 12 ft.; 2 $\frac{1}{2}$ to 3 in.	3 50	32 50	
	* 12 to 14 ft.; 3 $\frac{1}{4}$ to 4 in. ...	\$5 to 10 00		
euchlora dasystella	Crimean Linden—			
	12 to 14 ft.; 1 $\frac{1}{2}$ to 2 in.	2 00	18 50	\$165 00
	12 to 14 ft.; 2 to 2 $\frac{1}{4}$ in.	2 50	22 50	200 00
	12 to 14 ft.; 2 $\frac{1}{4}$ to 2 $\frac{1}{2}$ in.	3 50	33 50	
platyphyllos.	Large-leaved Linden—			
	10 to 12 ft.; 2 to 2 $\frac{1}{4}$ in.	2 00	17 50	
	* 16 to 20 ft.; 3 to 4 in. ...	\$5 to 15 00		
tomentosa, "argentea."	Silver-leaved Lin-			
	den. 7 to 8 ft.; 1 $\frac{3}{4}$ to 2 in. ...	2 50	22 50	200 00
	8 to 10 ft.; 2 $\frac{1}{4}$ to 2 $\frac{1}{2}$ in.	3 50	32 50	285 00
	10 to 12 ft.; 2 $\frac{3}{4}$ to 3 in. Spec. .	5 00	45 00	400 00
	* 12 to 14 ft.; 3 $\frac{1}{4}$ to 4 in. ...	\$7.50 to 15 00		
tomentosa pendula.	Weeping Silver			
	Linden. 16 ft. Specimens ...	25 00		
vulgaris.	European Linden—			
	8 to 10 ft.; 1 $\frac{3}{4}$ to 2 in.	1 75	16 50	150 00
	10 to 12 ft.; 2 to 2 $\frac{1}{4}$ in.	2 00	18 50	175 00
	10 to 12 ft.; 2 $\frac{1}{2}$ to 2 $\frac{3}{4}$ in.	3 50	32 50	275 00
	* 12 to 14 ft.; 2 $\frac{3}{4}$ to 3 in.	3 50	33 50	325 00
	* 16 to 18 ft.; Specimens ...	\$15 to 25 00		
vulgaris, var. rubra.	Red-twigg—			
	Linden. 10 to 12 ft.; 2 to 2 $\frac{1}{2}$ in..	2 50	23 50	200 00
ULMUS americana.	American Elm—			
	8 to 10 ft.; 1 $\frac{1}{4}$ to 1 $\frac{1}{2}$ in.	1 25	11 00	100 00
	10 to 12 ft.; 1 $\frac{1}{2}$ to 2 in.	1 50	13 50	125 00
	12 to 14 ft.; 2 to 2 $\frac{1}{4}$ in.	2 00	17 50	165 00
	12 to 14 ft.; 2 $\frac{1}{4}$ to 2 $\frac{1}{2}$ in.	2 50	22 50	200 00
	12 to 14 ft.; 2 $\frac{3}{4}$ to 2 $\frac{3}{4}$ in.	3 50	30 00	
	12 to 14 ft.; 2 $\frac{3}{4}$ to 3 in.	5 00		

* LARGE SIZES FOR IMMEDIATE EFFECT



A Block of American White Elm at Andorra.

	Each	10	100
ULMUS campestris. English Elm—			
8 to 10 ft.; 1½ to 1¾ in.	\$1 50	\$13 50	\$125 00
10 to 12 ft.; 1¾ to 2 in.	2 00	17 50	165 00
10 to 12 ft.; 2½ to 2¾ in.	2 75	25 00	225 00
12 to 14 ft.; 2¾ to 3 in.	3 50		
* 5 to 8 in. Specimens ...	\$15 to 100		
campestris, var. latifolia. Broad-leaved English Elm. Heavy Specimens			
* 18 to 25 ft.; 5 to 8 in. With ball.			
	\$25.00 to 100		
campestris, var. purpurea. Purple Wych Elm.			
10 to 12 ft.; 2 to 2¼ in.	2 00		
* 14 to 16 ft.; 3 to 3½ in.	3 50		
campestris, var. Wheatley's (Cornish)			
Elm. 8 to 10 ft.; 1¾ to 2 in. ...	1 75	16 50	150 00
10 to 12 ft.; 2 to 2¼ in.	2 50	23 50	185 00
* 12 to 14 ft.; 2¼ to 2½ in.	3 50	33 50	275 00
* 14 ft.; 2½ to 3 in.	5 00	47 50	
glabra. Scotch Elm—			
12 to 14 ft.; 1½ to 1¾ in.	1 50	12 50	
14 to 16 ft.; 2 to 2¼ in.	2 50	22 50	
glabra, var. Dampieri; fastigate form—			
12 to 14 ft.; 1¾ to 2 in.	2 50	23 50	
* 14 to 16 ft.; 2½ to 3 in.	3 50	32 50	
* 14 to 16 ft.; 3 to 4 in.	\$5 to 7	7 50	
vegeta, var. Huntingdoni. Huntingdon Elm—			
10 to 12 ft.; 1½ to 2 in.	2 00	17 50	
14 to 16 ft.; 2 to 2½ in.	2 50	23 50	
* 14 to 16 ft.; 2½ to 2¾ in.	3 50	32 50	

ALL GOODS F. O. B. HERE AT LIST PRICES

Planting for Immediate Effect

See pages 4 and 28.

In these days when the planting problem is usually one of quick results, the question is not only one of large size of stock, but the vital question is high quality in stock, without which large size is worse than useless.

To this end we have developed our large stock through years of Nursery Training—by frequent transplantings to produce fibrous-feeding roots—by constant, intelligent cultivation and pruning to instill the utmost vigor.

Thus we have produced **Andorra Quality**—large sizes that thrive after transplanting. You have our interest in your problems at all times. Consult us freely



DECIDUOUS SHRUBS

As the public are requiring larger specimen Shrubs from year to year, our stocks are grown in wide rows, the individual shrubs set well apart in the row, as by this method we secure a substantial bush in proportion to its height and one which carries its branches and foliage close to the ground.

AZALEAS, ANDORRA-GROWN

For Evergreen varieties see page 18.

NATIVE SPECIES.

	Each	10	100
AZALEA arborescens. Fragrant White Azalea—			
12 to 15 in. Clumps	\$1 00	\$9 00	\$80 00
15 to 18 in. Clumps	1 50	13 50	125 00
1½ to 2 ft. Clumps	2 00	18 50	150 00
* 2 to 2½ ft. Clumps	2 50	22 50	200 00
* 2½ to 3 ft. Clumps	\$3.50 to 7 50		
lutea (calendulaceum). Flame Azalea—			
12 to 15 in.	1 00	9 00	80 00
15 to 18 in. Clumps	1 50	13 50	125 00
18 to 24 in. Clumps	1 75	16 50	150 00
2 to 2½ ft. Clumps	\$2.50 to 3 50		
canadensis (Rhodora). 12 to 15 in....	1 50	12 50	
18 in. Clumps	2 00	18 50	150 00
* 24 in. Clumps	2 50	23 50	185 00
canescens. 1 to 1½ ft.	2 00	18 50	
nudiflora. Woods Honeysuckle—			
12 to 15 in. Clumps.	1 50	13 50	125 00
Vaseyi. Southern Azalea. 12 to 15 in..	1 50	13 50	125 00
15 to 18 in. Clumps	2 00	17 50	150 00
viscosa. White Azalea—			
12 to 15 in. Clumps	1 50	13 50	125 00
mollis. 1½ ft. Named sorts.....	1 25	10 00	
2 ft. Bushy. Named sorts	2 00	15 00	
2½ ft. Bushy. Named sorts	2 50	22 50	
pontica (Ghent). 1½ ft. Named sorts..	1 25	10 00	
2 ft.	2 00	15 00	
2½ to 3 ft. Bushy. Named sorts.	3 50	32 50	300 00
ledifolium, var. Narcissiflora (Yodogawa).			
Purple double. 15 to 18 in....	1 00	9 00	
24 in.	1 50	13 50	
* 30 in.	2 00	18 50	150 00
ABELIA grandiflora. 12 in.	50	4 50	35 00
15 to 18 in.	75	6 00	50 00
ACANTHOPANAX (pentaphylla aralia)—			
2 to 3 ft.	35	2 50	15 00
3 to 4 ft.	50	3 50	20 00
ÆSCULUS parviflora; syn., Pavia macrostachya—			
12 to 18 in.	75	6 00	50 00
2 ft.	1 00	8 50	75 00
2½ ft.	1 50	13 50	100 00
parviflora, var. rubra. 1½ to 2 ft.	1 50	13 50	100 00

ALL GOODS F. O. B. HERE AT LIST PRICES

DECIDUOUS SHRUBS

	Each	10	100
AMELANCHIER <i>Botryapium</i> . (Dwarf Shad Bush.) 2 to 3 ft.	\$0 50	\$3 50	\$30 00
3 to 4 ft.	75	5 00	40 00
4 to 5 ft.	1 00	8 50	
<i>rotundifolia</i> (Service Berry). 2 to 2½ ft.	35	3 00	25 00
AMYGDALUS (Almond). See <i>Prunus</i> .			
ARONIA <i>arbutifolia</i> . Choke-berry—			
1½ to 2 ft.	50	4 00	
<i>melanocarpa</i> . 1 ft.	35	2 00	10 00
BACCHARIS <i>halimifolia</i> . Groundsel Shrub—			
5 to 6 ft.	75	5 00	40 00
BENZOIN <i>æstivale</i> . Spice Bush. 2 to 2½ ft.	35	3 00	20 00
3 to 3½ ft.	50	4 00	25 00
3½ to 4 ft.	75	6 00	30 00
4 to 5 ft.	1 00	7 50	40 00
* 5 to 6 ft. Heavy	1 25	10 00	60 00
BERBERIS (Barberry).			
<i>buxifolia</i> (Dulcis). 10 to 12 in.	50	4 00	35 00
<i>ilicifolia</i> . Holly-leaved. 2 ft.	50	4 00	35 00
<i>Neuberti</i> . 2 to 2½ ft.	1 00	6 50	
<i>Sieboldi</i> . 3 to 4 ft.	1 50	13 50	
4 to 5 ft.	2 00	18 50	
* 5 to 6 ft. Specimens	2 50	23 50	
<i>Thunbergii</i> . 12 to 15 in.	25	1 75	12 50
15 to 18 in.	35	2 50	15 00
1½ ft.; broad and very heavy	50	3 50	20 00
2 ft.; broad and very heavy	60	4 50	25 00
2½ ft.; broad and very heavy	75	6 00	30 00
* 3 to 4 ft. Specimens\$1 to	1 50		
<i>vulgaris</i> . Common Barberry—			
2 to 3 ft.	35	3 00	20 00
3 to 4 ft.	50	4 00	25 00
* 4 to 5 ft. Heavy	75	5 00	30 00
<i>vulgaris</i> , var. <i>purpurea</i> . 2 to 3 ft.	50	3 50	20 00
3½ to 4 ft.	60	4 00	
* 4 to 5 ft.	75	6 00	
BUDDLEIA <i>Veitchiana</i> (Butterfly Bush)—			
2 year	50	4 00	15 00
CALYCANTHUS <i>floridus</i> . Allspice, or Sweet Shrub—			
2 to 3 ft.	35	3 00	20 00
3 to 4 ft.	50	4 00	25 00
4 to 5 ft.	75	6 00	
<i>præcox</i> . Japanese Sweet Shrub—			
2 to 3 ft.	50	4 50	
CARAGANA <i>arborescens</i> . Siberian Pea—			
4 to 6 ft.	50	4 00	
CARYOPTERIS <i>incana</i> . (Blue Spiraea). 1 year.	35	2 00	
CEANOTHUS <i>americanus</i> . Jersey Tea—			
1 to 1½ ft.	35	3 00	20 00
2 to 2½ ft.	50	4 50	30 00
Gloire de Plantieres. 1½ ft.	50	3 00	25 00

* LARGE SIZES FOR IMMEDIATE EFFECT

DECIDUOUS SHRUBS

	Each	10	100
CEPHALANTHUS occidentalis. 4 to 5 ft.....	\$0 35	\$3 00	\$25 00
CERCIS. See, also, <i>Deciduous Trees.</i>			
chinensis (Japonica). Japan Judas—			
2 to 2½ ft. Heavy.....	75	6 00	50 00
2½ to 3 ft.	1 00	8 50	75 00
silicastrum rubrum. 1½ to 2 ft.....	1 00	8 50	
CHIONANTHUS virginica. White Fringe—			
2 to 3 ft. Bushy	75	6 00	50 00
CITRUS trifoliata (Hardy Orange)—			
2 to 3 ft.	1 00	7 50	
CLETHRA alnifolia. Sweet Pepperbush—			
1½ to 2 ft.	35	3 00	
COMPTONIA asplenifolia. Sweet Fern—			
18 to 24 in. Heavy	50	3 50	30 00
2 to 2½ ft.	75	6 50	50 00
CORCHORUS. See <i>Kerria.</i>			
CORNUS. See, also, <i>Trees.</i>			
alba. Siberian Red-twigged Dogwood—			
2 to 3 ft.; very heavy	50	4 00	20 00
3 to 4 ft.; very heavy	75	5 00	25 00
amomum (sericea). Silky Dogwood—			
3½ to 4 ft.	50	4 00	20 00
mas. Cornelian Cherry. 2 to 3 ft.			
4 to 5 ft.	35	3 00	20 00
4 to 5 ft.	50	3 50	25 00
5 to 6 ft.	75	6 00	50 00
paniculata. 3 to 4 ft.			
4 to 5 ft.	50	4 00	30 00
4 to 5 ft.	75	6 00	35 00
* 5 to 6 ft.	1 00	7 50	40 00
sanguinea. European Osier Dogwood—			
2 to 3 ft.	35	3 00	20 00
4 to 5 ft. Heavy	50	4 00	
* 7 to 8 ft. Heavy	1 00	7 50	
stolonifera. Native Red Osier—			
2 to 3 ft.	35	3 00	
4 to 5 ft.	75	6 00	40 00
stolonifera, var. aurea. Golden-barked—			
2 to 3 ft.	35	3 00	20 00
3 to 4 ft.	50	4 00	30 00
4 to 5 ft.	75	6 00	25 00
6 to 7 ft.	1 00	7 50	30 00
* 7 to 8 ft.	1 50	10 00	50 00
CORYLUS americana. American Hazel—			
2 to 3 ft.	35	2 50	20 00
3 to 4 ft.	50	4 00	25 00
4 to 5 ft.	75	5 00	35 00
Avellana, var. laciniata. Cut-leaved			
Hazel 5 to 6 ft.	1 00	6 00	
maxima, var. purpurea. Purple Hazel—			
3 to 4 ft.	50	4 50	30 00
4 to 5 ft.	75	6 00	40 00

ALL GOODS F. O. B. HERE AT LIST PRICES

DECIDUOUS SHRUBS

	Each	10	100
COTONEASTER Simonsii. 4 to 5 ft.	\$0 50	\$4 50	
CYDONIA japonica. Japan Quince. 1½ to 2 ft..	50	3 50	
<i>japonica</i> , distinct colors, var. <i>alba</i> (White); <i>atrosanguinea</i> (Scar- let); <i>candida</i> (Cream); <i>grandi- flora rosea</i> (Rose); <i>sulphurca</i> (Yellow)	75	6 50	
CYTISUS scoparius (Scotch Broom). 3 to 4 ft.	50	4 50	
<i>praecox</i> . 2 to 2½ ft.	50	3 50	
<i>tinctoria</i> (Dyers Green weed). 2 to 3 ft.	35	3 00	
DESMODIUM penduliflorum. 3 years	50	4 50	
DEUTZIA gracilis. Dwarf Deutzia. 12 to 15 in.	35	3 00	\$15 00
1½ ft. Heavy	50	3 50	20 00
2 ft.	75	6 00	25 00
<i>gracilis</i> , var. <i>carminea</i> . 1½ ft.	50	4 00	20 00
2 ft.	75	5 00	25 00
<i>gracilis</i> , var. <i>rosea</i> . 3 to 4 ft.	50	4 00	25 00
<i>Lemoinei</i> 2 to 3 ft.	35	3 00	20 00
3 to 4 ft. Heavy	50	4 00	25 00
* 4 to 5 ft. Heavy	75	5 00	35 00
<i>Lemoinei</i> , var. <i>Avalanche</i> (White)— 1½ to 2 ft.	35	3 00	
<i>Lemoinei</i> , var. <i>compacta</i> . 2 to 2½ ft.	35	3 00	20 00
<i>parviflora</i> . 3 to 4 ft.	50	4 00	25 00
<i>rosea, campanulata</i> (White). 2 to 3 ft.	50	4 50	
<i>scabra</i> . 2 to 3 ft.	25	2 00	15 00
3 to 4 ft.	50	3 00	20 00
4 to 5 ft.	75	4 00	25 00
<i>scabra</i> , var. <i>candidissima</i> (Double White). 3 to 4 ft.	50	4 00	20 00
4 to 5 ft.	75	5 00	25 00
* 5 to 6 ft.	1 00	6 00	30 00
<i>scabra</i> , var. <i>Pride of Rochester</i> — 3 to 4 ft.	35	3 00	20 00
4 to 5 ft.	50	3 50	25 00
* 5 to 6 ft.	75	5 00	30 00
<i>scabra</i> , var. <i>rosea plena</i> (Double pink)— 4 to 5 ft.	35	3 00	20 00
* 5 to 6 ft.	75	5 00	25 00
<i>scabra</i> , var. <i>Watereri</i> . 2 to 3 ft.	35	3 00	20 00
3 to 4 ft.	50	4 00	25 00
4 to 5 ft.	75	5 00	30 00
* 5 to 6 ft.	1 00	7 50	40 00
<i>scabra</i> , var. <i>Wellsi</i> . 4 to 5 ft.	50	4 00	25 00
* 6 to 8 ft.	75	6 00	40 00
DIERVILLA (Weigela) amabilis. White. 2 to 3 ft	50	4 00	25 00
6 to 8 ft.	1 50	12 50	50 00
<i>candida</i> . White. 2 to 3 ft.	35	3 00	20 00
6 to 7 ft.	75	5 00	40 00
<i>florida nana</i> , var. <i>aurea variegata</i> — 2 to 2½ ft.	75	6 00	
<i>florida</i> , syn. <i>rosea</i> . 2 to 3 ft.	50	4 00	25 00
4 to 6 ft.	75	5 00	40 00

* LARGE SIZES FOR IMMEDIATE EFFECT

DECIDUOUS] SHRUBS

	Each	10	100
DIERVILLA Grœnewegeni. Red and White—			
3 to 4 ft.	\$0 50	\$4 00	\$30 00
4 to 5 ft.	75	5 00	35 00
* 6 to 7 ft.	1 00	6 50	40 00
japonica, var. Eva Rathke. Dark Car-			
mine. 2 to 3 ft.....♦..	25	2 00	17 50
3 to 4 ft.♦..	50	3 50	20 00
4 to 5 ft.♦..	75	5 00	30 00
japonica, var. Nivea. White, 3 to 4 ft.	50	4 00	
4 to 5 ft.	75	5 00	
japonica, var. rubra. 2 to 3 ft.....	50	4 00	25 00
4 to 5 ft.	75	5 00	
Lavallei. Crimson. 3 to 4 ft.....	35	3 00	20 00
4 to 5 ft.....	50	4 00	25 00
* 5 to 6 ft.	75	5 00	35 00
Mad. Coutourier. White to Pink—			
3 to 4 ft.	35	3 00	20 00
4 to 5 ft.	50	4 00	30 00
* 5 to 6 ft.	75	5 00	35 00
Steltzneri. Dark Red. 3 to 4 ft.....	35	3 00	20 00
4 to 5 ft.	50	4 00	30 00
* 5 to 6 ft.	75	5 00	35 00
Van Houttei. Carmine. 3 to 4 ft.....	35	2 50	
4 to 5 ft.	50	4 50	30 00
* 5 to 6 ft.	75	6 00	35 00
Verschaffelti. Pink. 2 to 3 ft.....	35	3 00	20 00
3 to 4 ft.	50	4 00	30 00
5 to 6 ft.	75	5 00	35 00
sessilifolia. 2 to 3 ft.....	25	2 00	15 00
3 to 4 ft.	50	3 50	20 00
trifida. 2 to 3 ft.....	35	2 00	15 00
3 to 4 ft.	50	3 00	20 00
ELÆAGNUS angustifolia. Oleaster. 4 to 5 ft..	50	4 00	
5 to 6 ft.	75	6 00	
longipes; syn., edulis. Japanese Oleas-			
ter. 2 to 2½ ft.	35	3 00	20 00
4 to 5 ft.	50	4 50	30 00
* 6 to 8 ft. Heavy	1 00	6 00	50 00
parviflora. 4 to 5 ft.....	50	4 50	30 00
5 to 6 ft.	75	6 00	50 00
ELSCHOLTZIA Stauntoni (Mint Shrub). 2 to 3 ft.	35	3 00	20 00
EUONYMUS alatus. Cork-barked—			
3 to 3½ ft.♦..	75	6 00	50 00
3½ to 4 ft.♦..	1 00	8 50	65 00
4 to 5 ft. Heavy♦..	1 50	12 50	85 00
* 5 to 6 ft. Heavy♦..	2 00	18 50	
* 7 to 8 ft. Broad. Heavy Speci-			
mens lifted with ball of earth			
and burlapped. (See note,			
page 28)\$7.50 to 15 00			
europæus. Spindle Tree. 3 to 4 ft. ...	35	3 00	20 00

	Each	10	100
EXOCHORDA grandiflora. Pearl Bush. 2 to 3 ft.	\$0 50	\$3 50	
3 to 4 ft.	75	6 00	
FORSYTHIA (Golden Bell) Fortunei. 3 to 4 ft..	50	3 00	\$17 50
4 to 5 ft.; very heavy	75	4 00	20 00
* 5 to 6 ft.; very heavy	1 00	6 00	30 00
Fortunei, var. aurea variegata. 3 to 4 ft..	50	4 00	25 00
4 to 5 ft.	75	6 00	35 00
intermedia. 2 to 3 ft.	25	2 00	15 00
3 to 4 ft.; very heavy	35	3 00	17 50
4 to 5 ft.	50	4 50	20 00
* 5 to 6 ft.	75	6 00	35 00
* 6 to 8 ft.	1 00	8 50	60 00
suspensa. 2 to 3 ft.	25	2 00	15 00
3 to 4 ft.	50	4 00	17 50
4 to 5 ft.	75	5 00	25 00
viridissima. 3 to 4 ft.....	50	4 00	20 00
4 to 5 ft.; very heavy; extra	75	6 00	35 00
* 5 to 6 ft.; very heavy; extra	1 00	8 50	50 00
* 6 to 8 ft.; very heavy; extra	1 50	10 00	60 00
HAMAMELIS japonica. Japanese Witch Hazel—			
3 to 4 ft.	1 00	8 50	
4 to 5 ft.	1 50	13 50	
* 5 to 6 ft.	2 50	23 50	
virginiana. Witch Hazel. 2 to 3 ft....	35	3 00	25 00
3 to 4 ft.; heavy	75	6 00	50 00
HIBISCUS Syriacus. Althæa; Rose of Sharon—			
alba plena. 5 to 6 ft.....	1 00	8 50	75 00
Ardens. Violet rose—			
5 to 6 ft. Standard	1 00	8 50	
6 to 8 ft. Bush	75	6 50	
atropurpurea plena. 5 to 7 ft.....	75	6 50	
Jeanne d'Arc. Double White. 2 to 3 ft.	50	4 00	20 00
3 to 4 ft.	75	5 00	25 00
4 to 5 ft.	1 00	6 00	
* 5 to 6 ft. (Standards)	1 00	8 50	
Lady Stanley. Blush White (Double)—			
* 5 to 7 ft.	1 00	8 50	
* 5 to 6 ft. (Standards)	1 50	13 50	
purpureus folis argenta marginata—			
3 to 4 ft.	50	4 00	
5 to 6 ft.	1 00	8 50	
* 5 to 6 ft. (Standards)	1 50	13 50	
totus albus. White (Single). 2 to 3 ft.	50	3 00	20 00
3 to 4 ft. (Standards)	1 50	13 50	
violacea (semi-plena). 6 to 8 ft.....	1 00	8 50	
violet clair (Double). 6 to 8 ft.	1 00	8 50	
5 to 6 ft. (Standards)	1 50	13 50	
HYDRANGEA arborescens. 2 to 3 ft.....	25	2 00	15 00
3 to 4 ft.	35	3 00	20 00
* 4 to 5 ft.	50	3 50	25 00
arborescens, var. grandiflora. 3 to 4 ft.	35	3 00	20 00

* LARGE SIZES FOR IMMEDIATE EFFECT

DECIDUOUS SHRUBS

	Each	10	100
HYDRANGEA paniculata. 3 to 4 ft.	\$0 35	\$3 00	\$20 00
4 to 5 ft.	50	4 00	35 00
5 to 7 ft.	1 00	8 50	
paniculata grandiflora. 2 to 3 ft.....	35	3 00	20 00
3 to 4 ft.	50	4 00	25 00
quercifolia (Oak Leaf). 1½ ft. to 2 ft.♦..	1 00	9 00	
HYPERICUM aureum. 2 to 3 ft.....	50	4 00	
calycinum. Clumps. 8 to 10 in.	25	2 00	10 00
Moserianum hybridum. Gold-Flower—			
10 to 15 in.	25	2 50	15 00
prolificum. 2 to 3 ft.♦..	35	2 50	10 00
* 3 to 4 ft.♦..	50	3 00	15 00
ILEX Sieboldi; syn., serrata. Red-fruited—			
2 to 3 ft.	3 50	33 50	
3 to 4 ft.♦..	5 00	48 50	
* 4 to 5 ft. Heavy♦..	7 50	70 00	
* 5 to 6 ft.	10 00		
Sieboldi. White-fruited. 2 to 3 ft.♦..	3 50		
* 3 to 4 ft.♦..	7 50		
Among our plants with brilliant Fall and Winter Fruits, the Ilex Sieboldi, Red and White Fruited, stand out prominently. The Red-fruited type has a herry as brilliant as Ilex verticillata and carried in much greater mass. The White-fruited sort, while not quite so prolific has an ivory-white herry quite distinct from other fruiting shrubs.			
verticillata. Winter Berry—			
2 to 3 ft. Bushy	\$0 50	\$3 50	
3 to 4 ft. Bushy*	75	5 00	
ITEA virginica. 1 to 2 ft.	35	3 00	\$25 00
3 to 4 ft.	75	6 00	50 00
JASMINUM nudiflorum. Yellow Jasmine. 1 year	35	2 50	
KERRIA Japonica (Corchorus). 2 to 3 ft.	35	2 00	
japonica fl. pl. 2 to 3 ft.	35	2 00	
Japonica variegata. 1½ to 2 ft.	35	2 00	
LESPEDEZA bicolor. 3 to 4 ft.....	35	2 50	
LIGUSTRUM amurense. Amoor Privet—			
1½ to 2 ft.	25	2 00	10 00
5 to 6 ft.	75	5 00	40 00
lbota. The true upright form—			
2 to 3 ft.	25	2 00	12 50
3½ to 4 ft.	35	3 00	20 00
4 to 5 ft.	50	3 50	25 00
5 to 6 ft.; heavy	60	4 00	35 00
* 6 to 8 ft.	75	6 00	50 00
* 8 to 10 ft.	1 00	8 50	75 00
lbota, var. Regelianum. Regel's—			
1½ to 2 ft. Broad	35	3 00	20 00
2 to 2½ ft. Broad	50	3 50	25 00
* 3 to 4 ft. Broad	75	5 00	30 00
* 4 to 5 ft. Broad	1 00	7 50	40 00

DECIDUOUS SHRUBS

	Each	10	100
LIGUSTRUM ovalifolium. California Privet—			
2 to 2½ ft. Bushy..per 1000, \$40..	\$0 25	\$1 00	\$5 00
2½ to 3 ft. Bushy..per 1000, \$45..	35	1 50	6 00
3 to 3½ ft. Bushy..per 1000, \$50..	50	2 50	7 50
3½ to 4 ft. Bushy..per 1000, \$60..	60	3 00	8 00
* 4 to 5 ft. Bushy..per 1000, \$75..	75	5 00	15 00
* 5 to 6 ft. Bushy	1 00	6 50	20 00
7 to 10 ft. Extra heavy plants for screen work. Prices ou ap- plication.			
ovalifolium, var. aureum. Golden Privet. 5 to 6 ft.....	1 00	7 50	
sinense. Chinese Privet. 2 to 3 ft.....	25	2 00	12 50
5 to 6 ft.	50	4 50	
vulgaris. Common Privet. 2 to 3 ft..	35	3 00	20 00
3 to 4 ft.	50	4 00	30 00
4 to 5 ft.; heavy	75	6 00	40 00
LONICERA fragrantissima. Chinese Fragrant Bush Honeysuckle. 2 to 3 ft.	35	3 25	25 00
3 to 4 ft.; heavy	50	4 50	35 00
4 to 5 ft.	75	6 00	50 00
Heckrottii. 4 to 5 ft.	1 00	7 50	
Morrowii. Japanese Bush Honeysuckle—			
2 to 3 ft.; heavy	35	3 00	15 00
3 to 4 ft.	50	4 00	25 00
4 to 5 ft.	75	6 00	35 00
5 to 6 ft.	1 00	7 50	40 00
Ruprechtiana. 2 to 3 ft.	35	3 00	15 00
3 to 4 ft.	50	3 50	20 00
4 to 5 ft.	75	5 00	25 00
* 5 to 6 ft.	1 00	8 50	30 00
Standishii. Standish's Honeysuckle—			
2 to 3 ft.	50	4 00	35 00
4 to 5 ft.	75	6 00	50 00
tatarica (rubra). 2 to 3 ft.....	35	3 00	15 00
3 to 4 ft.	50	3 50	20 00
* 4 to 5 ft.	75	5 00	25 00
tatarica, var. alba. 2 to 3 ft.	35	3 00	15 00
3 to 4 ft.	50	3 50	20 00
* 5 to 6 ft.	75	6 00	30 00
tatarica, var. bella albida. 3 to 4 ft.	35	3 00	20 00
4 to 5 ft.	50	4 00	25 00
5 to 6 ft.	75	5 00	30 00
* 6 to 8 ft.	1 00	7 50	35 00
tatarica, var. chrysantha. 4 to 5 ft.	50	4 00	20 00
5 to 6 ft.	75	5 00	25 00
* 6 to 8 ft.	1 00	7 50	35 00
tatarica, var. gracilis. 3 to 4 ft.	35	3 00	20 00
4 to 5 ft.	50	3 50	25 00
5 to 6 ft.	75	5 00	30 00
* 6 to 8 ft.	1 00	7 50	35 00
tatarica, var. splendens. 2 to 3 ft.	35	3 00	15 00
3 to 4 ft.	50	3 50	20 00
4 to 5 ft.	75	5 00	25 00
* 5 to 6 ft.	1 00	6 00	30 00
Xylosteum (Fly Honeysuckle). 4 to 5 ft.	50	4 00	

* LARGE SIZES FOR IMMEDIATE EFFECT

DECIDUOUS SHRUBS

	Each	10	100
LYCIUM chinense. Matrimony Vine. 2 to 3 ft.	\$0 35	\$2 50	\$10 00
MYRICA carolinensis. Bay-berry—			
12 to 15 in.♦..	50	4 00	30 00
15 to 18 in. Bushy♦..	75	5 00	35 00
18 to 24 in.♦..	1 00	6 50	40 00
Galc. 3 to 4 x 3 ft. Spec. with ball...	5 00		
PAVIA parviflora. See <i>Aesculus</i> , under Shrubs.			
PHILADELPHUS coronarius. Mock Orange—			
3 to 4 ft.	50	4 00	25 00
4 to 5 ft.	75	6 00	30 00
5 to 6 ft.	1 00	7 50	40 00
coronarius, var. aureus. Golden—			
2 to 3 ft.	50	4 00	
coronarius speciosissimus. 2 to 3 ft....	35	3 00	15 00
3 to 4 ft.	50	4 00	25 00
4 to 5 ft.	75	6 00	30 00
* 5 to 7 ft.	1 50	10 00	50 00
grandiflorus. 3 to 4 ft.	50	4 00	20 00
4 to 5 ft.	75	5 00	25 00
5 to 6 ft.	1 00	7 50	30 00
* 6 to 8 ft.	1 50	10 00	60 00
Lemoinei. (Hybrid.) 3 to 4 ft.....	75	5 00	35 00
Lemoinei, var. erectus. 2 to 3 ft.....	35	3 00	20 00
3 to 4 ft.	50	4 00	25 00
* 5 to 6 ft.	75	5 00	30 00
Mt. Blanc. 2 to 3 ft.....	35	2 50	15 00
3 to 4 ft.	50	4 00	20 00
* Zeyheri. 6 to 8 ft.	1 00	6 00	50 00
PHYSOCARPUS opulifolia. 3 to 4 ft.....	35	2 50	20 00
4 to 5 ft.	50	3 50	25 00
5 to 6 ft.	75	5 00	35 00
* 6 to 7 ft.	1 00	6 50	40 00
opulifolia aurea. 4 to 5 ft.	50	3 50	25 00
6 to 7 ft.	1 00	6 50	40 00
POTENTILLA fruticosa. Shrubbery Cinquefoil—			
2 to 3 ft.	35	2 00	15 00
PRUNUS amygdalus communis. Flowering			
Almond. 2 to 3 ft.	75	5 00	
amygdalus communis, var. rosea—			
1½ to 2 ft.	75	5 00	
RHAMNUS cathartica. Buckthorn. 4 to 5 ft. ..	50	4 50	35 00
5 to 6 ft.	75	6 00	40 00
6 to 8 ft. Heavy	1 50	10 00	
Frangula. 4 to 5 ft.	35	3 00	20 00
RHODOTYPUS kerrioides. White Kerria—			
2 to 3 ft.	35	3 00	20 00
3 to 4 ft.	50	4 00	25 00
* 4 to 5 ft. Very heavy.....	75	6 00	35 00
5 to 6 ft.	1 00	8 50	

ALL GOODS F. O. B. HERE AT LIST PRICES

DECIDUOUS SHRUBS

	Each	10	100
RHUS canadensis syn. (<i>aromatica</i>). Fragment			
Sumac. 2 to 3 ft.	\$0 35	\$3 00	\$30 00
3 to 4 ft.	50	4 00	40 00
copallina . Shining Sumac. 2 to 3 ft..	35	3 00	10 00
3 to 4 ft.	50	4 00	15 00
* 4 to 5 ft.	75	6 00	20 00
Cotinus , var. <i>atropurpurea</i> . Purple			
Mist. 3 to 4 ft.	1 00	8 50	
4 to 5 ft. Heavy	1 50	13 50	
ROBINIA hispida . Rose Acacia. 3 to 4 ft.	50	3 50	
RUBUS odoratus . 2 to 3 ft.	25	2 00	10 00
3 to 4 ft.	35	2 50	12 50
SAMBUCUS Canadensis . 2 to 3 ft.....	35	3 00	15 00
3 to 4 ft.	50	4 00	20 00
* 4 to 5 ft.	75		
Melanocarpa . 3 to 4 ft.	75	6 00	
nigra , var. <i>aurea</i> . Golden Elder—			
2 to 3 ft.	35	2 50	15 00
3 to 4 ft.	50	3 50	20 00
4 to 5 ft.	75	4 00	30 00
* 5 to 6 ft.	1 00	8 50	
nigra , var. <i>laciniata</i> . Cut-leaved Elder—			
3 to 4 ft.	50	3 50	
SORBARIA Lindleyana . 4 to 5 ft.	50	4 50	
sorbifolia . 2 to 3 ft.	35	3 00	25 00
SPIRÆA arguta . 4 to 5 ft.....	35	2 50	
5 to 6 ft. Heavy	50	4 00	
Billardii . 4 to 5 ft.	50	3 50	25 00
Bumalda . 2 to 3 ft.....	50	3 50	
Bumalda , var. <i>Anthony Waterer</i> —			
15 to 18 in.	35	2 50	
18 to 24 in. Heavy.....	50	4 00	25 00
2 to 2½ ft. Heavy	75	5 00	30 00
* 3 ft.	1 00	7 50	
callosa . Fortune's Spirea. 3 to 4 ft..	50	3 00	20 00
callosa , var. <i>alba</i> . 2 to 3 ft.....	50	3 00	20 00
Lindleyana . (See <i>Sorbaria</i> .)			
Margarite Hybrid . 2½ to 3 ft.	1 00	7 50	
opulifolia . (See <i>Physocarpus</i> .)			
prunifolia flore pleno . Bridal Wreath—			
3 to 4 ft.	50	3 50	
Reevesiana . 3 to 4 ft.....	35	3 00	20 00
4 to 5 ft.	50	4 00	25 00
Reevesiana fl. pl. 3 to 4 ft.....	35	3 00	25 00
4 to 5 ft.	50	4 00	25 00
salisifolia . 4 to 5 ft.....	35	2 50	20 00
Sorbifolia . (See <i>Sorbaria</i> .)			

* LARGE SIZES FOR IMMEDIATE EFFECT

DECIDUOUS SHRUBS

	Each	10	100
SPIRÆA Thunbergii. Thunberg's Spirea—			
1½ to 2 ft.	\$0 35	\$3 00	\$20 00
2 to 2½ ft. Very heavy	50	3 50	30 00
* 3 to 3½ ft. Very heavy	75	4 00	35 00
4 to 4½ ft.	1 00	8 50	50 00
Van Houttei. 3 to 3½ ft.	50	4 00	20 00
4 to 5 ft.	75	5 00	
STAPHYLEA colchica. 2 to 3 ft.	50	3 50	
4 to 5 ft.	75	6 50	
STEPHANANDRA flexuosa. 2 to 2½ ft.	35	2 50	20 00
3 to 4 ft.	50	4 00	35 00
STEWARTIA pentagyma. 4 to 5 ft.	2 50		
STYRAX japonica. 3 to 4 ft.	75	6 00	50 00
4 to 5 ft.	1 00	7 50	
5 to 6 ft.	1 50	13 50	
SYMPHORICARPUS racemosus. Snowberry—			
2 to 3 ft.	35	2 50	20 00
vulgaris. Coral Berry. 2 to 3 ft.	25	2 00	10 00
3 to 4 ft.	35	3 00	15 00
SYRINGA chinensis Rothomagensis. 3 to 4 ft. ..	50	3 00	
japonica. 2 to 3 ft.	75	5 00	
5 to 6 ft.	1 50	12 50	
Josikæa. 3 to 3½ ft.	50	4 00	
4 to 5 ft.	75	5 00	
* villosa. 2 to 3 ft.	50	4 00	
4 to 5 ft.	1 00		
villosa, var. Emodi. 5 to 6 ft. Heavy... ..	2 50	20 00	
vulgaris. Common Lilac. 2 to 3 ft.	35	3 00	25 00
3 to 3½ ft.	50	4 00	35 00
4 to 5 ft. Clumps\$2.50 to 5 00			
4 to 5 ft.	75	6 00	50 00
vulgaris alba. 2 to 2½ ft.	50	4 00	25 00
3 to 3½ ft.	75	6 00	40 00
* 4 to 8 ft. Clumps\$1 to 5 00			
vulgaris, named varieties	1 00		
Alphonse Lavalle. Double, Clear lilac—			
3 to 4 ft.	1 00	7 50	
Charles X. Single, reddish purple—			
2 to 2½ ft.	50	3 50	30 00
3 to 4 ft.	75	6 00	50 00
4 ft. Clump	3 50		
Colmariensis. Blue. 3 to 4 ft. Heavy ..	1 00	7 50	
Congo. Single, Wine-red. 2 ft.	75	6 00	
Dame Blanche. Double, White—			
3 to 4 ft.	1 00	7 50	
Dr Master's. Double, lilac—			
2 to 3 ft.	75	6 00	

ALL GOODS F. O. B. HERE AT LIST PRICES

DECIDUOUS SHRUBS

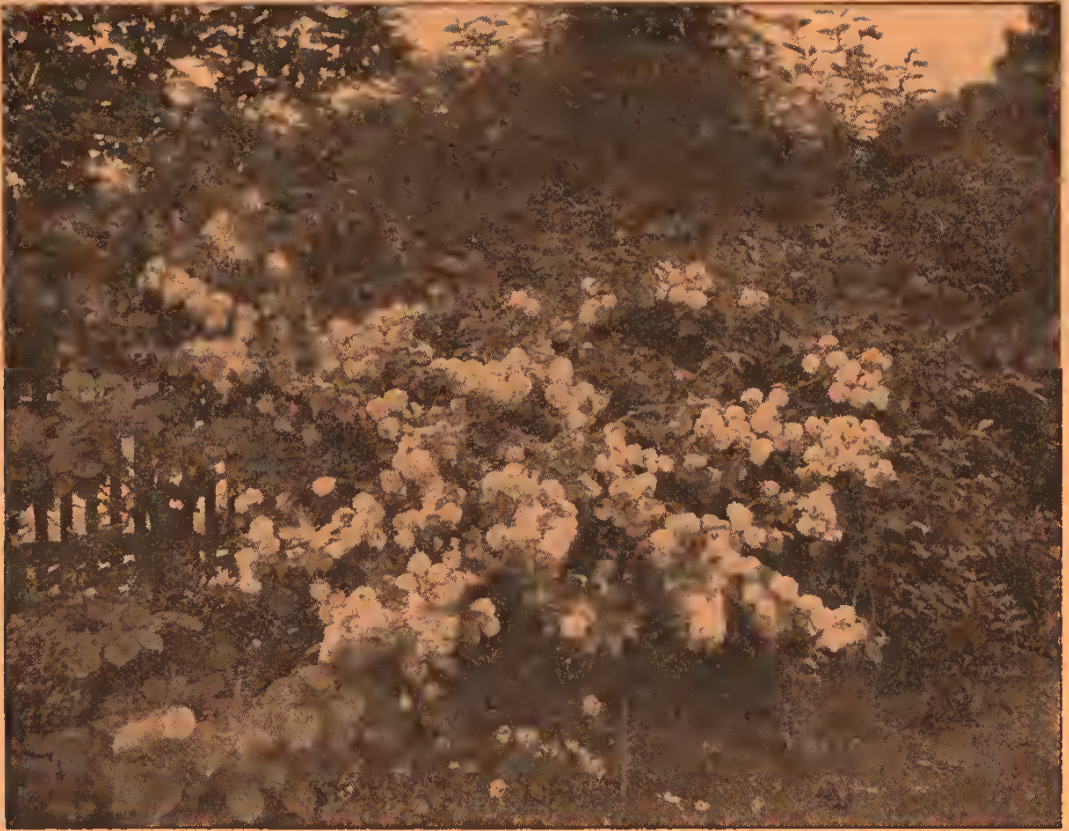
	Each	10	100
SYRINGA Frau Bertha Dammann. Single, White—			
2 to 3 ft.	\$0 50	\$4 00	
3 to 4 ft. Heavy	1 50	13 50	
Jeanne d'Arc. Double White. 3 to 4 ft.	1 00	8 50	
Langius. Single, Rosy-lilac. 2 to 2½ ft.	1 00	7 50	
La Tour d'Auvergne. Double, violet-purple. 3 to 4 ft.	1 00	8 50	
Leon Simon. Double, Bluish crimson—			
3 to 4 ft.	1 00	8 50	
Mad. Abel Chatenay. Double, White—			
2 to 3 ft.	50	4 50	
3 to 4 ft.	1 00	8 50	
Mad. Casimir Perier. Double, Cream—			
2 to 3 ft.	50	4 50	
3 to 4 ft.	1 00	8 50	
Mad. Lemoine. Double, White—			
2 to 2½ ft.	50	4 50	
3 to 3½ ft.	1 00	8 50	
5 to 7 ft.	\$1.50 to 5 00		
Marie Le Graye. Single, White—			
2 to 2½ ft.	50	4 50	\$35 00
2½ to 3 ft.	75	6 00	
3½ to 4 ft.	1 00	8 50	
Mathieu de Dombasle. Dbl. Mauve—			
5 to 6 ft.	3 50		
Michael Buchner. Double, pale lilac—			
2 to 3 ft.	1 00	7 50	
3 to 4 ft.	1 50	12 50	
4 to 5 ft.	3 50		
President Grevy. Double, Blue—			
3 to 4 ft.	1 50	13 50	
President Loubet. Double, reddish carmine. 4 ft.	1 50	13 50	
Rubra de Marley. Single, reddish purple. 2 to 3 ft.	50	4 00	
3 to 4 ft.	1 00	7 50	
3 to 4 ft. Clumps	\$3.50 to 5 00		
Senator Volland. Double, Rosy-red—			
2 to 3 ft.	50	4 00	
3 to 3½ ft.	75	6 00	
4 to 5 ft.	1 50	13 50	
Souvenir de Ludwig Spæth. Single red—			
2 to 2½ ft.	50	4 00	
2½ to 3 ft.	75	6 00	
3 to 4 ft.	1 00	7 50	
TAMARIX gallica. 4 to 5 ft.	35	2 50	20 00
hispida æstivalis. 3 to 4 ft.	35	2 50	20 00
juniperina, syn. plumosa. 4 to 5 ft.	35	2 50	20 00
parviflora. 5 to 6 ft.	50	4 00	20 00

❖ LARGE SIZES FOR IMMEDIATE EFFECT

DECIDUOUS SHRUBS

	Each	10	100
VACCINIUM corymbosum. Swamp Huckle- berry. 1 to 1½ ft. Clumps.....	\$0 75	\$7 00	\$60 00
1½ to 2 ft. Clumps	1 00	9 00	85 00
2½ to 3 ft. Clumps	1 50	12 50	
pennsylvanicum. 8 to 12 in.	50	4 00	35 00
VIBURNUM acerifolium. 2 to 3 ft.....	50	4 00	35 00
3 to 4 ft.	75	6 00	40 00
4 to 5 ft.	1 00	7 50	
Carlesii —NEW. 3 to 3½ ft. Half Standards	2 50		
cassanoides. Withe-rod. 3 to 3½ ft. Very heavy	75	6 00	50 00
* 3½ to 4 ft. Very heavy	1 00	7 50	60 00
* 4 to 5 ft. Very heavy	1 50	9 00	75 00
dentatum. Arrow-wood— 2 to 3 ft. Clumps.	35	3 00	25 00
3 to 4 ft. Clumps	50	4 50	30 00
4 to 5 ft.	75	6 00	40 00
* 6 to 8 ft. Clumps	\$2.50 to 5 00		
dilatatum. Japan Bush Cranberry— 2 to 3 ft.	1 00	8 50	
6 to 7 ft. Specimens	5 00		
Lantana. Wayfaring Tree— 2½ to 3 ft.	35	3 00	30 00
3½ to 4 ft.	50	4 00	35 00
4 to 5 ft.	75	6 00	
* 5 to 6 ft.	1 00	8 50	
Lentago. Sheep-berry. 2 to 2½ ft.....	50	4 00	30 00
3 to 4 ft.	75	6 00	50 00
* 4 to 5 ft.	1 00	8 50	60 00
* 5 to 6 ft.	1 50	13 50	85 00
Molle. 3 to 3½ ft.	50	4 00	35 00
3½ to 4 ft.	60	5 00	40 00
* 4 to 5 ft.	75	6 00	50 00
* 5 to 6 ft.	1 50	13 50	85 00
* 7 to 8 ft.	2 50	20 00	
nitidum. 6 to 8 ft.	5 00		
Opulus. High Cranberry Bush— 3 to 4 ft. Fine. Heavy	50	3 50	25 00
4 to 5 ft. Fine. Heavy	60	4 00	35 00
5 to 6 ft. Specimens	75	6 00	50 00
* 6 to 7 ft. Specimens	1 00	8 50	75 00
* 7 to 9 ft. Specimens	\$2.50 to 5 00		
Opulus, var. Sterile. Guelder Rose— 5 to 6 ft.	1 00	8 50	
* 6 to 7 ft.	1 50	13 50	
7 to 8 ft. Specimens	3 50		
tomentosum. Single. Japan Snowball— 2 to 3 ft.	35	3 00	25 00
3 to 3½ ft.	50	4 00	
4 to 5 ft. Extra fine	75	6 00	
tomentosum, var. plicatum. Japanese Snowball. 2½ to 3 ft.	50	4 00	35 00
3 to 4 ft.	75	5 00	45 00
4 to 5 ft.	1 00	7 50	

ALL GOODS F. O. B. HERE AT LIST PRICES



Viburnum plicatum

	Each	10	100
VIBURNUM prunifolium. Black Haw. 2 to 2½ ft..	\$0 75	\$6 00	
3 to 4 ft.	1 00	8 50	
4 to 5 ft.	1 50	13 50	
rhytidophyllum. 3 to 4 ft.	1 50	10 00	
Sieboldii. 2 to 3 ft.	50	4 50	
3 to 4 ft. Heavy	75	6 50	
5 to 6 ft. Heavy	1 00	8 50	\$75 00
* 6 to 12 ft. Specimens ..	\$5.00 to 15 00		
Wrightii. 3 to 4 ft.	1 50	10 00	
VITEX Agnus-castus. Chaste Tree. 3 to 4 ft..	50	3 50	20 00
coerulea. 1 to 2 ft.	35	2 50	15 00
WEIGELIA (<i>See Diervilla</i>).			
XANTHOCERAS sorbifolia. 2 to 2½ ft.	75	5 00	
4 to 5 ft.	1 50	13 50	
ZANTHORRHIZA apiifolia. Shrub Yellow Root—			
6 to 8 in.per 1000, \$35..	25	2 00	5 00
* 10 to 12 in.per 1000, \$40..	35	2 00	8 00
* 12 to 18 in.per 1000, \$50..	50	2 50	10 00

DISTINCTIVE TREES AND PLANTS

An attractive booklet beautifully illustrated and descriptive of a number of charming Evergreens, Trees and Shrubs that are worthy of your better acquaintance.

* LARGE SIZES FOR IMMEDIATE EFFECT

REEDS and GRASSES

	Each	10
ARUNDO DONAX. Clumps	\$0 50	\$3 50
BAMBUSA Metake	\$15 per 100.. 50	3 50
ELYMUS glaucus	25	1 50
ERIANTHUS Ravennæ	50	3 50
EULALIA Japonica, and vars. variegata, gracillima univittata, zebrina. Clumps	50	3 50
PHALARIS arundinacea, var. variegata. Ribbon Grass....	25	1 50

VINES, CLIMBING and TRAILING PLANTS

	Each	10
ACTINIDIA polygama. 5-in. pots	\$0 50	\$3 50
AKEBIA quinata. From 5-in. pots	50	3 50
AMPELOPSIS quinquefolia. Virginia Creeper. 5-in pots..	50	3 50
3-year, field-grown; heavy	25	2 00
quinquefolia, var. Engelmanni. 5-in pots; heavy..	35	3 00
3-year, field-grown; heavy	25	2 00
tricuspidata; syn., Veitchi. Japan or Boston Ivy;		
5-in. pots; heavy.....per 100, \$20..	35	3 00
2-year, field-grown; heavy....per 100, \$15..	25	2 00
ARISTOLOCHIA siphon. Dutchman's Pipe Vine. 5-in. pots	75	6 00
BIGNONIA capreolata. 2 to 3 ft.; field-grown.....	35	2 50
grandiflora. 2 to 3 ft.; field-grown.....	35	2 50
radicans. Scarlet Trumpet Vine. 2 to 3 ft.....	35	2 50
CELASTRUS scandens. False Bitter-sweet—		
2 to 3 ft.per 100, \$15..	50	3 50
3 to 5 ft.; heavy; field-grown.per 100, \$25..	75	5 00
CLEMATIS coccinea. 4-in. pots	35	3 00
Flammula. Sweet Clematis. 6-in. pots.....	1 00	7 00
Large-flowering varieties—Fairy Queen, Gem, Henryi, Jackmani, Jackmani var. alba, Jeanne d'Arc, Duchess of Edinburgh, Kermesina, Lady Neville, Lilacina floribunda, Madame Van Houtte, Miss Bateman. President	75	6 00
paniculata. 2-year; heavy.....per 100, \$15..	30	2 50
5-in. pots; fine	50	3 50
virginiana. Wild Clematis. 4-in. pots	50	3 50
EUONYMUS radicans. 2 yrs.; field-grown..per 100, \$10..	25	1 50
3-year; field-grown	35	2 00
radicans, var. variegata. 1 ft.; field-grown.....	25	2 00
radicans, var. carrierei (large leaf)—		
2-year; field-grown	35	3 00
Extra heavy stock	75	6 00
radicans, var. vegata (Scarlet Fruit)—		
1-year; field-grown	25	2 00
2-year; field-grown	35	3 00
3 and 4-year; extra heavy.....	75	5 00

ALL GOODS F. O. B. HERE AT LIST PRICES

	Each	10
HEDERA helix. English Ivy. 4-in. pots..per 100, \$15..	\$0 25	\$2 00
Extra heavy; 4-in. pots.....per 100, 20..	35	3 00
LONICERA japonica. Honeysuckle—		
4-in. potsper 100, \$20..	35	2 50
2-year; field-grownper 100, \$10..	35	2 50
japonica, var. aurea reticulata. 4-in. pots.....	35	3 00
japonica, var. chinensis. Purplish green foliage		
4-in potsper 100, \$20..	35	3 00
2-year; field-grownper 100, \$10..	35	2 50
japonica, var. Halleana. 4-in. pots..per 100, \$20..	35	3 00
2-year old; field-grownper 100, \$10..	25	2 00
Brownii, var. fuchsioides. Scarlet Trumpet—		
3 to 4 ft.; field-grown.....	75	6 00
PERIPLOCA graeca. Silk Vine. 5-in. pots..per 100, \$25..	50	3 50
PUERARIA hirsuta. Kudzu Vine. 5-in. pots—.....✦..	50	4 00
SCHIZOPHRAGMA hydrangeoides. Climbing Hydrangea		
4 years oldper 100, \$10..	1 50	13 50
VITIS æstivalis. Summer Grape. In pots.....	50	3 50
heterophylla, var. variegata. In pots.....	75	6 00
Labrusca. Fox Grape. In pots.....	50	3 50
volpina. Frost Grape. In potsper 100, \$10..	50	3 50
WISTARIA chinensis. Chinese Wistaria—		
2 to 3 ft.; in large potsper 100, \$10..	1 50	12 50
Heavy; field-grownper 100, \$10..	2 50	22 50
* Standards. 4 to 6 ft. Good heads....\$3.50 to	5 00	
chinensis, var. alba. Field grownper 100, \$10..	1 00	8 50
frutescens. 4 to 5 ft. Field-grown.....✦..	1 00	7 50
magnifica. 5 to 6 ft.; field-grown.....\$1.50 to	2 50	
multijuga. Field-grownper 100, \$10..	1 00	7 50
multijuga, var. albaper 100, \$10..	1 50	

FRUIT DEPARTMENT

	Each	10
APPLES, Summer— Early Harvest, Golden Sweet, Red Astrachan, Summer Rambo, Sweet Bough, Benoin, Yellow Transparent.		
Autumn—Fall Pippin, Gravenstein, Maiden's Blush, Smokehouse, Wealthy.		
Winter—Baldwin, Belle-fleur, Fallwater, King of Tompkins County, Northern Spy, Rhode Island Greening, Styman's Winesap, York Imperial. 5 to 7 ft.; $\frac{3}{4}$ to 1 in. cal.....	\$1 50	\$12 50
Crab— Hyslop, Large Red Siberian, Large Yellow Siberian. 5 to 7 ft.per 100, \$10..	1 50	12 50
CHERRIES, Sour (Dukes and Morellos)— Early Richmond, Empress Eugenie, May Duke, Late Duke, Montmorency. 5 to 6 ft.per 100, \$10..	1 50	12 50
Large Sweet (Hearts and Bigarreus)—Black Tartarian, Governor Wood, Napoleon Bigarreau, Schmidt's Bigarreau, Windsor. 5 to 6 ft.per 100, \$10..	1 50	12 50

* LARGE SIZES FOR IMMEDIATE EFFECT

	Each	10
NUTS. American Sweet Chestnut. 4 to 5 ft.....	\$1 00	\$8 50
Spanish Chestnut. 8 to 10 ft.....	3 50	
Hybrid Chestnut. Paragon, Numbo. 4 to 5 ft....	1 50	12 50
Japan Chestnut. 7 to 8 ft.....	1 50	13 50
Walnut, Black. 4 to 5 ft.....	1 00	5 00
PEACHES —Belle of Georgia, Fitzgerald, Fox's Seedling, Crawford's Late, Elberta, Mountain Rose, Morris White, Oldmixon Free, Stump the World, Susquehanna, Troth's Early, Wheat- land. 5 to 6 ft.per 100, \$30..	50	4 50
PEARS, Summer —Bartlett, Clapp's Favorite, Doyenne d'Ete. Autumn and Winter—Beurre d'Anjou, Buffum, Duchesse d'Angouleme, Howell, Kieffer's Hy- brid, Lawrence, Rutter, Seckel, Sheldon, Wor- den-Seckel. 5 to 6 ft.....	1 50	12 50
A few varieties, 6 to 8 ft.....	2 50	22 50
PLUMS, Japanese —Abundance, Burbank, Chabot, Satsuma. European—Giant Prune, Imperial Gage, Lombard. 5 to 6 ft.	1 00	7 50
QUINCES —Champion, Orange. 3 to 4 ft.	75	6 00

SMALL FRUITS

	Each	10
BLACKBERRIES —Eldorado, Erie, Kittatinny, Rathbun, Snyder, Wilson Junior.....per 100, \$5..		\$0 50
CURRENTS, Red —Cherry, Fay's Prolific; White —White Grape; Black —Lee's Prolific	\$0 25	2 00
GOOSEBERRIES, Red —Houghton, Industry; Green —Down- ing, Smith's Improved	25	2 00
GRAPES, Black —Concord, Moore's Early, Worden; Red — Brighton, Catawba, Delaware; White —Green Mountain, Niagara, Pocklington. 2-year.....	25	2 00
A few varieties, extra heavy.....	50	3 00
RASPBERRIES, Black —Gregg; Red —Cuthbert, Columbian Ruby; Yellow —Golden Queen...per 100, \$5..		50
STRAWBERRIES. Special lists on request. Runners, per 100, \$3.50; per 1,000, \$10. Potted plants, per 100, \$5 to \$7.50.		

ESCULENT ROOTS

ASPARAGUS —Argentil, Barr's Mammoth, Conover's Colos- sal, Columbia, Palmetto.....	\$1.50 per 100; \$10 per 1,000
RHUBARB —Best varieties	Per 10, \$3; per 100, \$25

A CALENDAR OF HARDY PERENNIALS

In planning a garden or hardy border, it is most essential to know exactly the period of bloom of each plant, the color and height. Our "Calendar" will give you this information together with special lists of Iris, Phlox, Peonies and Chrysanthemums.

ALL GOODS F. O. B. HERE AT LIST PRICES

ROSES

	Each	10'
AUSTRIAN BRIERS —Harrison's Yellow and Persian Yellow.	\$0 40	\$3 50
SWEET BRIER —Rosa rubignosa	40	3 50
HYBRIDS Penzance Briers✦..	50	4 50
Amy Robsart, deep rose.		
Brenda, blush.		
Annie of Gierstein, dark crimson.		
Minna, white.		
Flora McIvor, blush white.		
Lady Penzance, coppery yellow.		
Lord Penzance, ecru.		
Meg Merrilees, crimson.		
BUSH ROSES —Field-grown	35	3 00
Blanda, Early Wild Rose. Pink. May to June.		
Canina, Dog Rose. Light Pink. Summer.		
Carolina, Swamp Rose. Pink. June to Sept.		
Lucida, Dwarf. Bright Pink. June and July.		
Lucida, var. alba. White. June and July.		
Multiflora, Many-flowered Rose. White. June.		
Nitida. Shining Rose. Red. June and July.		
Rubrifolia, Red-leaved Rose. Pink. June.		
Spinossissima, Scotch Rose. White. May and June	75	5 00
Setigera. Prairie Rose. 2 to 2½ ft.....	35	3 00
EVERBLOOMING Hybrid Tea Roses✦..	50	4 50
Antoine Revoire, rosy flesh on yellow ground.		
Baby Rambler, crimson. Betty, ruddy gold.		
Bessie Brown, creamy white.		
Caroline Testout, rose.		
Chateau de Clos Vougeot, scarlet.		
Dean Hole, silvery carmine.		
Duchess of Albany, deep pink.		
Duchess of Wellington, saffron yellow.		
Earle of Warwick, salmon pink.		
Francisca Kruger (Tea), yellow peach.		
General McArthur, bright crimson.		
George C. Waud, orange vermillion.		
Gladys Harkness, salmon pink.		
Grace Molyneux, apricot.		
Gruss an Teplitz, crimson.		
Harry Kirk, deep sulphur yellow.		
J. J. L. Mock, imperial pink.		
Kaiserin Augusta Victoria, primrose.		
Killarney, pink and Killarney white.		
Lady Alice Stanley, coral rose to pale flesh.		
Lady Ursula, flesh pink.		
La France, rose.		
Laurent Carle, brilliant carmine.		
Madame Abel Chatenay, carmine rose.		
Madame Jules Bouche, white.		
Madame Leon Paine, silvery salmon, orange yellow shadings.		
Madame Ravary, yellow.		
Madame Segond Weber, rosy salmon.		
Maman Cochet, pink and M' Cochet white.		
Mrs. Aaron Ward, Indian yellow.		
Mrs. A. R. Waddell, rosy scarlet, opening reddish salmon.		
Mrs. Harold Brocklebank, creamy white.		
Mary, Countess of Ilchester, crimson.		
Souvenir du President Carnot, flesh shading white.		
Viscountess Folkstone, creamy pink.		

ALL GOODS F. O. B. HERE AT LIST PRICES

ROSES

63

	Each	10	100
HYBRID Perpetual Roses	\$0 50	\$4 00	\$35 00
Alfred K. Williams, carmine red.			
Baroness Rothschild, rose.			
Captain Hayward, carmine crimson.			
Eugene Verdier, rose flesh.			
Frau Karl Drusccki, white.			
General Jacqueminot, scarlet.			
Madame Gabriel Luizet, silvery pink.			
Magna Charta, rose.			
Margaret Dickson, white.			
Mrs. John Laing, pink.			
Mrs. R. D. Sharman Crawford, rose pink.			
Paul Neyron, deep rose.			
Prince Camille de Rohan, deep crimson.			
Ulrich Brunner, cherry crimson.			
MOSS ROSES. Blanche Moreau, white.....	50	4 00	
Crimson Globe, deep crimson.			
Zenobia, rose.			
CLIMBING ROSES. Crimson Rambler, crimson.	50	4 00	35 00
Dawson, bright pink.			
Dorothy Perkins, sbell pink.			
Hiawatba, ruby carmine.			
Lady Gay, cerise pink.			
Tausendschon, soft pink.			
White Dorothy Perkins, white.			
SINGLE ROSES—Dickson's hybrids✦..	75	6 00	
Irish Beauty, pure white.			
Irish Brightness, vivid crimson.			
Irish Elegance, bronzy orange scarlet.			
Irish Harmony, saffron yellow.			
Irish Modesty, coral pink.			
TRAILING ROSES—Wichuraiana. White.			
2 to 3 ft. 2-year old. In 4-in. pots	35	3 00	25 00
Wichuraiana hybrids	50	4 00	35 00
Adelaide Moulle, soft pink.			
Alberic Barbier, creamy yellow.			
Auguste Barbier, rosy crimson.			
Debutante, rosy pink.			
Eliza Robichon, rose shaded yellow.			
Evergreen Gem, buff.			
Gardenia, bright yellow.			
Manda's Triumph, double white.			
Paul Transon, rosy pink.			
Pink Roamer, rich pink.			
South Orange Perfection, blush pink.			
Universal Favorite, soft rose.			
RUGOSA ROSES—Rosa rugosa. 2 to 2½ ft.....	35	3 00	20 00
2½ to 3 ft.	50	4 00	35 00
3 to 3½ ft.	75	6 00	50 00
rugosa, var. alba. 2 to 2½ ft.....	50	4 00	25 00
2½ to 3 ft.	75	6 00	50 00
rugosa hybrids✦..	50	4 00	30 00
Belleæ Poitevine, deep rose pink.			
Blanc Double de Coubert, double white.			
Conrad Ferdinand Meyer, silvery rose.			
Madame Charles Worth, rosy carmine.			
Madame Georges Bruant, double white.			
Mrs. Antony Waterer, deep crimson.			
Sir Thomas Lipton, double white.			

ALL GOODS F. O. B. HERE AT LIST PRICES

HARDY HERBACEOUS PLANTS

Size of Plants. We aim to send out only extra-strong plants of the different sorts—plants that will give a fair return of bloom the first season. These cost but little more than the small plants so widely offered, and our customers find it more satisfactory to use Andorra-grown stock, which gives results. It has been well said, "The lowest prices are not always the cheapest, as cheapness does not consist in what you pay, but in what you get for what you pay."

	Each	10	100
ACHILLEA eupatorium (Fern-leaved Yarrow). All summer. 4 to 5 ft.....	\$0 15	\$1 25	
filipendulina (Noble Yarrow), July Golden Yellow. 2 ft.	15	1 25	\$10 00
millefolium roseum (Rosy Milfoil). July to September. Pink. 1½ ft.	15	1 25	
millefolium roseum var. Cerise Queen . June to September. Amaranth- red. 1½ ft.....	25	2 00	
ptarmica (The Pearl). All summer. White. 2 ft.....	15	1 25	10 00
ptarmica var. Boule de Neige (Ball of Snow). July to September. White. 2 ft.....	25	2 00	
tomentesum (Woolly Yarrow). June. Yellow. 1 ft.....	25	2 00	
ACONITUM Bicolor . July to September. Blue and white. 2 ft.....	35	2 50	
Fischeri (Monkshood). September and October. Blue. 3 ft.....	35	2 50	15 00
Lycoctonum (Wolf's Bane). June to September. Yellow. 3 ft.....	35	2 50	
Napellus albus . August to September. White. 2 ft.....	35	2 50	
ACANTHUS mollis (Bear's Breech). August and September. Rose. 3 ft...	35	2 50	
ADONIS Amurensis fl. pl. April and May. Yel- low. 1 ft.....	65	5 00	
AJUGA Genevensis . May. Bright blue. 6 in... reptans rubra (Bugle). May. Purplish blue. 6 in.....	25	1 50	12 50
ALTHÆA rosea (Hollyhock). July. Various colors. 4 to 6 ft.....	25	1 50	12 50
rosea , var: Allegheny Fringed	25	1 50	12 50
ALYSSUM rostratum , June and July. Golden Yellow. 1 ft.....	35	2 50	
saxatile compactum (Golden Tuft). May and June. Yellow. 1 ft.	25	1 50	12 50
ANCHUSA Italica , var. Dropmore . (Alkanet.) New May and June. Blue. 3 to 4 ft.....	25	2 00	

	Each	10	100
ANEMONE (Windflower) <i>Japonica</i> . September			
Red. 2 to 3 ft.	\$0 25	\$1 50	\$12 50
<i>Japonica</i> , var. <i>alba</i> . Fall. White. 2 to 3 ft.	25	1 50	12 50
<i>Japonica</i> , var. <i>Lady Ardilaun</i> . Fall. White. 2 to 3 ft.	25	2 00	15 00
<i>Japonica</i> , var. <i>Prince Henry</i> . Fall. Rich deep pink. 2 to 3 ft.	25	2 00	
<i>Japonica</i> , var. <i>Queen Charlotte</i> . Fall. Rose. 2 to 3 ft.	25	2 00	15 00
<i>Japonica</i> , var. <i>rosea superba</i> . Fall. Silvery rose. 2 to 3 ft.	25	2 00	
<i>Japonica</i> , var. <i>Whirlwind</i> . Fall. Pure white. 2 to 3 ft.	25	2 00	15 00
<i>Pennsylvanicum</i> . June and July. White. 1 to 2 ft.	25	1 50	12 50
<i>Pulsatilla</i> (Pasque Flower.) May. Violet-purple. 9 in.	25	1 50	12 50
<i>syvestris</i> . May. Pure white. 1 to 1½ ft.	25	1 50	12 50
ANTHEMIS <i>tinctoria</i> (Chamomile. June to September. Golden Yellow. 2 ft.	25	1 50	10 00
AQUILEGIA <i>baicalense</i> . May to July. Blue and white. 18 in.	25	1 50	12 50
<i>Canadensis</i> . (Common Columbine). May to July. Scarlet and Yellow. 1 to 2 ft.	25	1 50	10 00
<i>Chrysantha</i> . May to August. Golden Yellow. 3 ft.	25	2 00	12 50
<i>cærulea</i> (Rocky Mountain Columbine). May to July. Blue. 18 in.	25	2 00	12 50
<i>flabellata</i> , var. <i>nana alba</i> . April to June. White. 1 ft.	25	2 00	
<i>nivea grandiflora</i> . April to June. White. 2 to 3 ft.	25	2 00	12 50
<i>vulgaris</i> fl. pl. May to July. White to blue. 1½ to 2 ft.	25	2 00	12 50
<i>truncata</i> . May and June. Scarlet, yellow-tipped. 2 ft.	25	2 00	12 50
ARABIS <i>alpina</i> (Rock Cress). April and May. White. 4 in.	25	1 50	10 00
<i>alpina</i> fl. pl. Double.	35	2 50	
ARENARIA <i>montana</i> , var. <i>grandiflora</i> (Sandwort). May and June. White. 6 in.	25	1 50	12 50
ARMERIA <i>maritima</i> , var. <i>alba</i> (Thrift). Summer. White. 9 in.	25	1 50	10 00
<i>maritima</i> , var. <i>splendens</i> . Summer Rose. 9 in.	25	1 50	12 50
ARTEMISIA <i>abrotanum</i> (Old Man). Silvery white foliage. 2 ft.	25	1 50	10 00
<i>Stelleriana</i> (Old Woman). Silvery foliage. 2 ft.	25	1 50	10 00

ALL GOODS F. O. B. HERE AT LIST PRICES

	Each	10	100
ASCLEPIAS tuberosa (Butterfly Weed). July and August. Orange. 2 ft.....	\$0 25	\$1 50	\$10 00
ASTER (Michaelmas Daisy) alpinus . June and July. Purple. 9 in.....	25	1 50	10 00
Amellus elegans . September and October. Blue. 1½ ft.....	25	1 50	10 00
amethystinus . September and October. Amethyst. 3 to 4 ft.....	25	1 50	10 00
grandiflorus . October and November. Violet-blue. 2 ft.....	35	2 50	20 00
Lady Trevelyan . September and October. White. 3 ft.....	25	1 50	10 00
laevis . September. Blue. 4 ft.....	25	1 50	10 00
Madonna . September and October. White. 4 ft.....	25	1 50	10 00
Novæ Angliæ . September and October. Purple. 4 ft.....	25	1 50	10 00
Novæ Angliæ , var. rubra . September and October. Bright rose. 4 ft...	25	1 50	10 00
Perry's Pink . August and September. 2 ft.	25	1 50	
ptarmicoides . August and September. White. 1½ ft.....	25	1 50	10 00
Robert Parker . September and October. Lavender. 4 ft.....	25	1 50	10 00
Snowflake . September and October. Pure white; very free. 1½ ft..	25	1 50	10 00
Tataricus . October and November. Purple. 5 ft.....	25	1 50	10 00
Trinervius . October and November. Violet-purple. 2½ ft.....	25	1 50	10 00
White Queen . September and October. White. 4 ft.....	25	1 50	10 00
ASTILBE Japonica (Spirea). June. White. 1½ ft.	25	1 50	10 00
ASTRANTIA major (Masterwort). June and July. Pale pink. 1 ft.....	25	2 50	20 00
AUBRETIA Hendersoni (False Wall Cress). April. Purplish violet. 4 in..	25	1 50	12 50
BAPTISIA australis (False Indigo). June and July. Dark blue. 2 ft.....	25	1 50	10 00
tinctoria . June and July. Bright yellow. 2 to 3 ft.....	25	1 50	10 00
BELEMCANDA Chinensis ; syn., Pardanthus . June. Orange-red. 4 ft.....	25	1 50	10 00
BELLIS perennis (English Daisy). May. White and pink. 6 to 8 in.....	25	1 50	10 00
BETONICA . See <i>Stachys</i> .			
BOCCONIA cordata (Plume Poppy). July and August. White. 5 ft.....	25	1 50	12 50
BOLTONIA asterioides (False Chamomile). August and September. White. 4 ft.	25	1 50	10 00
latisquama . August and September. Light lilac. 4 ft.....	25	1 50	10 00

HERBACEOUS PLANTS

	Each	10	100
CALIMERIS incisa (Starwort). July to September. Light blue. 18 in....	\$0 25	\$1 50	\$10 00
CALLIRHOË involucrata (Poppy Mallow). All summer. Rosy crimson. 1 ft.	25	1 50	10 00
CAMPANULA Carpatica (Carpathian Harebell). June to September. Blue. 9 in.	25	1 50	10 00
<i>Carpatica</i> , var. <i>alba</i> . June to September. White. 9 in.....	25	1 50	10 00
<i>Mærheimi</i> . May to July. White. 2 to 2½ ft.....	35	2 50	
<i>persicifolia</i> (Peach Bells). June and July. Blue. 18 in.....	25	1 50	10 00
<i>persicifolia alba</i> . June and July. White. 18 in.	25	1 50	10 00
<i>pyramidalis</i> (Chimney Bellflower). August and September. Blue. 2 ft.	25	1 50	10 00
<i>trachelium</i> (Coventry Bells). Purple. June and July. 3 ft.....	25	1 50	10 00
CENTAUREA montana (Perennial Cornflower). June and July. Dark purple. 1½ ft.	25	1 50	
<i>montana</i> , var. <i>alba</i> . White form of the above.	25	1 50	10 00
CERASTIUM tomentosum . June and July. White. 6 in.	25	1 50	12 50
CERATOSTIGMA plumbaginoides (Plumbago). October and November. Blue. 6 in.	25	2 00	15 00
CHELONE Lyoni (Turtlehead). August and September. Rose-purple. 2 ft.	35	2 50	
CHRYSANTHEMUM leucanthemum hybridum (Shasta Daisies). Alaska, California, Westralia. All summer. White. 2 ft.....	35	2 50	15 00
<i>maximum</i> , var. <i>Triumph</i> (Moonpenny Daisy). July to October. White. 2 ft.....	25	1 50	12 50
<i>Nipponicum</i> . September and October. White. 2 ft.....	35	2 50	
<i>Pompon Varieties</i> . Fall. All colors. 1½ to 2 ft.	25	1 50	10 00
<i>Pompon Varieties, Heavy Stock</i>	25	2 00	15 00
<i>uliginosum</i> . September. White. 2½ ft..	25	1 50	10 00
CHRYSOGONUM Virginianum (Golden Joint). June. Yellow. 1 ft.....	25	1 50	
CHRYSOPSIS villosa (Golden Aster). September. Yellow. 2 ft.....	25	2 00	15 00
CIMICIFUGA acerinum . August and September. White. 2½ ft.....	35	2 50	
<i>Dahurica</i> (Bugbane). August and September. White. 2 to 3 ft....	35	2 50	15 00
<i>racemosa</i> (Snakeroot). July. White. 3 to 5 ft.....	25	1 50	12 50

ALL GOODS F. O. B. HERE AT LIST PRICES

	Each	10	100
CINERARIA. See <i>Artemisia</i> .			
CLEMATIS <i>crispa</i> (Leather-flower). June to September. Lavender. 3 to 4 ft.	\$0 25	\$1 50	\$12 50
<i>Davidiana</i> . August and September. Blue. Fragrant. 3 ft.	25	1 50	12 50
<i>recta</i> . June to August. White. Fragrant. 2 to 3 ft.	25	1 50	
CONOCLINIUM <i>cœlestinum</i> (Mist-flower). September and October. Deep blue. 18 in.	25	1 50	12 50
CONVALLARIA <i>majalis</i> (Lily-of-the-Valley). May and June. White. 6 to 9 in. .	25	2 00	15 00
COREOPSIS <i>lanceolata</i> (Tickseed). June to October. Golden yellow. 2 ft.	15	1 25	10 00
<i>Rosea</i> . June to September. Pink. 8 to 10 in.	15	1 25	10 00
CORONILLA <i>varia</i> (Crown Vetch). June to October. Pink. 1 to 2 ft.	25	1 50	12 50
DELPHINIUM <i>Chinense</i> (Larkspur). July to September. Blue. 1½ ft.	25	1 50	10 00
<i>Chinense</i> , var. <i>album</i> . July to September. White. 1½ ft.	25	1 50	10 00
<i>elatum</i> (Bee Larkspur). June to August. Blue. 4 ft.	25	1 50	10 00
<i>formosum</i> (Larkspur). June to September. Deep blue. 4 ft.	25	1 50	10 00
<i>Belladonna</i> (Hybrid). June to September. Turquoise blue; very free. 3 ft.	25	2 00	15 00
DIANTHUS <i>barbatus</i> (Sweet William). May to July. Mixed colors. 1½ ft.	25	1 50	10 00
<i>deltoides</i> (Maiden Pink). June. Pink. 4 in.	25	1 50	10 00
<i>latifolius</i> . June to September. Red. 1 ft.	25	1 50	10 00
<i>plumarius</i> (Hardy Pinks). May and June. 1 ft.	25	2 00	15 00
<i>Dellcata</i> . Rose with fringed petals.			
<i>Laura Wilmer</i> . White, with maroon center.			
<i>Her Majesty</i> . White.			
<i>Stanislaus</i> . Violet-rose, with crimson center.			
DICENTRA <i>eximia</i> (Seal-flower). June to August. Pink. 1 ft.	25	1 50	10 00
<i>spectabilis</i> (Bleeding-heart). May and June. Pink. 2 to 3 ft.	25	2 00	12 50
DIGITALIS <i>ambigua</i> (Foxglove). July and August. Pale yellow. 3 ft.	25	2 00	15 00
<i>purpurea</i> (Common Foxglove). June and July. Mixed colors. 4 to 5 ft.	25	1 50	10 00
<i>purpurea</i> , var. <i>gloxiniæflora</i> . June and July. Mixed colors. 4 to 5 ft.	25	1 50	10 00

HERBACEOUS PLANTS

69

	Each	10	100
DORONICUM Austriacum. April and May. Yellow. 2 ft.	\$0 35	\$2 50	\$15 00
plantagineum, var. excelsum. April to June. Yellow. 2 ft.	35	2 50	15 00
ECHINACEA purpurea (Purple Cone-flower). July to September. Rosy purple. 3 ft.	25	2 00	15 00
EPIMEDIUM coccineum (Barren-wart). May and June. Red. 9 in.	25	2 00	
lilacea. May and June. Lilac. 9 in.	25	2 00	
macranthum. May and June. Red. 9 in.	25	2 00	
sulphureum. May and June. Yellow. 9 in.	25	2 00	
ERIGERON speciosus (Fleabane). June to August. Violet-blue. 1½ to 2 ft.	25	2 00	15 00
ERYNGIUM amethystinum (Sea Holly). July to September. Amethyst-blue. 2 ft.	35	2 50	
EUPATORIUM ageratoides (White Snakeroot). September and October. White. 3 ft.	25	1 50	12 50
celestinum. Fall. Light blue. 2 ft.	25	1 50	
EUPHORBIA corollata (Spurge). July to September. White. 1½ ft.	25	1 50	12 50
FEVERFEW, Little Gem. June to October. White. 15 in.	25	1 50	10 00
FUNKIA Fortunel (Day Lily). July to August. Blue. 1½ to 2 ft.	25	1 50	12 50
ovata. July to August. Deep blue. 1½ to 2 ft.	25	1 50	12 50
subcordata, var. grandiflora. September. White. Fragrant. 2 ft.	25	2 00	15 00
undulata, var. media picta variegata. July and August. Lilac. 1 ft.	25	1 50	12 50
GAILLARDIA grandiflora (Blanket-flower). June to November. Yellow. 1½ ft.	25	1 50	10 00
GALEGA officinalis (Goat's Rue). July and August. Blue. 2 ft.	25	1 50	10 00
officinalis, var. alba. July and August. White. 2 ft.	25	1 50	10 00
GENTIANA Andrewsii (Closed Gentian). September. Blue. 2 ft.	35	2 50	
GERANIUM sanguineum (Cranesbill). June to September. Red. 1½ ft.	25	1 50	
GEUM coccineum (Avens). June and July. Scarlet. 1½ ft.	25	2 00	15 00
Heldrechli. June. Orange. 18 in.	25	2 00	15 00
montanum. June and July. Yellow. 18 in.	25	2 00	15 00

ALL GOODS F. O. B. HERE AT LIST PRICES

	Each	10	100
GILLENIA trifoliata (Bowman's Root). Rose and white. July. 3 ft.....	\$0 35	\$2 50	
GYPSOPHILA paniculata (Baby's Breath). July. White. 2 to 3 ft.	25	1 50	\$12 50
HELENIUM, pumilum magnificum. (Sneezewort). July to October. Yellow. 1½ ft.	25	1 50	10 00
autumnale, var. superbum. July to Octo- ber. Yellow. 4 ft.....	25	1 50	10 00
autumnale, var. rubrum (New). July to October. Red. 4 ft.....	25	2 00	
grandicephalum, var. striatum. August to October. Orange. 3 ft.....	25	2 00	15 00
Hoopesi. All summer. Orange-yellow. 2 ft.	25	2 00	15 00
HELIANTHUS (Perennial Sunflowers) giganteus. August to October. Pale yellow. 6 to 10 ft.....	25	1 50	10 00
Maximiliana. September, Deep yellow. 6 to 8 ft.....	25	1 50	10 00
mollis. September and October. Golden yellow. 4 ft.....	25	1 50	10 00
multiflorus fl. pl. July and August. Golden yellow. 4 ft.....	25	1 50	10 00
multiflorus, var. Soliel d'Or. August to September. Deep yellow; quilled petals. 4 ft.....	25	2 00	
orgyalis. September and October. Golden yellow. 6 ft.....	25	1 50	10 00
rigidus. July to October. Golden yellow. 3 ft.	25	1 50	10 00
rigidus, var. Miss Mellish. September and October. Golden yellow. 6 ft.	25	1 50	10 00
rigidus, var. Wolly Dodd. September. Deep yellow. 3 ft.....	25	1 50	10 00
HELIOPSIS Pitcheriana. June to October. Orange-yellow. 3 ft.....	25	1 50	10 00
HELLEBORUS niger (Christmas Rose). March. White. 6 in.....	35	3 00	
niger, var. atrorubens. March. Purple. 9 in.	35	3 00	
HEMEROCALLIS Aurantiaca. June and July. Bright Indian yellow. 3 to 4 ft..	35	3 00	
Dumortieri (Yellow Day Lily). June and July. Orange-yellow. 2 ft.	25	1 50	12 50
flava. June. Yellow. 2 ft.....	25	1 50	12 50
fulva (Tawny Day Lily). July and Aug- ust. A tawny yellow. 2½ ft...	25	1 50	12 50
fulva, var. Kwanso fl. pl (Double Orange Lily). July and August. Cop- pery yellow. 2½ ft.....	25	1 50	12 50
fulva, var. Thunbergii. August and Sep- tember. Lemon-yellow. 2½ ft.	25	1 50	12 50



A field of Japanese Iris at Andorra

	Each	10	100
HEPATICA triloba (Liverleaf). April. White and blue. 6 in.	\$0 25	\$1 25	\$10 00
HEUCHERA sanguinea (Alumroot). June to September. Coral-red. 18 in..	25	2 00	15 00
sanguinea, var. alba. June to September. White. 18 in.....	25	2 00	
HIBISCUS militaris. June to September. Buff-yellow. 18 in.....	25	2 00	
Moscheutos (Mallow). July to September. Rose. 5 ft.....	25	1 50	10 00
Moscheutos, var. Crimson Eye. July to September. White. 5 ft.....	25	1 50	10 00
Moscheutos (Mallow Marvels). July to September. 5 to 6 ft.—			
White and pink.....	35	3 00	20 00
Red	50	5 00	
HOLLYHOCKS. See Althæa rosea.			
IBERIS sempervirens (Candytuft). April and May. White. 6 in.....	25	1 50	10 00
corifolia. April and May. White. 9 in.	25	1 50	10 00
INULA ensifolia (Fleabane). June to August. 18 in.	35	3 00	
oculis-Christi. Yellow. June to August. 2 ft.	35	3 00	
Light yellow. 2 ft.....	25	1 50	12 50
INCARVILLEA Delavajl (Hardy Gloxinia). June and July. Rosepink. 18 in...	35	3 00	

ALL GOODS F. O. B. HERE AT LIST PRICES

	Each	10	100
IRIS. For Special Descriptive Lists, consult our Calendar of Hardy Perennials.			
<i>atroviolacea</i> . May. Dark violet. 2 to 2½ ft.	\$0 35	\$3 00	
<i>cristata</i> . April and May. Light blue. 6 in..	25	1 50	\$12 50
<i>Florentina</i> . May. Tinted white. Fragrant. 1½ ft.	25	2 00	
<i>Germanica</i> . May. Named varieties. 1½ to 2½ ft.	25	1 50	10 00
<i>lævigata</i> ; syn., <i>Kämpferi</i> (Japanese Iris). June and July. Our selection, all colors. 2½ to 4 ft.	25	2 00	15 00
Customer's selection	35	3 00	25 00
<i>Pallida</i> , var. <i>Dalmatica</i> . June. Light blue. 3 ft.	35	3 00	25 00
<i>Pallida</i> , var. <i>speciosa</i> . June. Indigo-blue. 2 to 3 ft.....	35	3 00	25 00
<i>Pseudacorus</i> . June. Yellow. 2 to 3 ft....	25	2 00	15 00
<i>pumila</i> , var. <i>aurea</i> . Yellow. May. 8 to 10 in.	25	1 50	12 50
<i>pumila</i> , var. <i>cyanea</i> . Royal purple. May. 8 to 10 in.....	25	1 50	12 50
<i>pumila</i> , var. <i>eburna</i> . Cream. May. 8 to 10 in.	25	1 50	12 50
<i>pumila</i> , var. <i>florida</i> . White. May. 8 to 10 in..	25	1 50	12 50
<i>Sibirica</i> , May and June. Bright blue. 1½ ft.	25	1 50	10 00
<i>Sibirica</i> , var. <i>alba</i> . June. White. 2 ft. Rare.....	35	3 00	25 00
<i>Sibirica</i> , var. <i>orientalis</i> . May. Deep blue. 1½ ft.	25	1 50	10 00
<i>tectorum</i> . May. Bright lilac. 1 ft.....	25	2 00	15 00
KNIPHOFIA <i>aloides</i> (Red-hot Poker). August and September. Crimson. 3 ft.....			
<i>obelisque</i> . July and August. Saffron-yellow. 3 to 4 ft.....	35	2 50	15 00
<i>Pfitzerii</i> (Flame Flower). July to October. Orange-scarlet. 3 to 4 ft.....	35	2 50	15 00
LATHYRUS <i>latifolius</i> , var. <i>albus</i> (Hardy White Pea). Summer. Climbing.....			
<i>latifolius</i> , var. <i>roseus</i> . Summer. Rose. Climbing	25	2 00	
<i>latifolius</i> , var. <i>splendens</i> . Summer. Climbing	25	2 00	15 00
<i>latifolius</i> , var. <i>Pink Beauty</i> . Summer. Bright pink. Climbing	25	2 00	15 00
LAVENDULA <i>spica</i> (Lavender). 15 to 18 in...			
<i>vera</i> (Lavender). 15 to 18 in.....	25	1 50	12 50
LIATRIS <i>graminifolia</i> (Blazing Star). August and September. Rosy purple. 2 ft.....			
<i>pycnostachya</i> (Kansas Gay Feather). September. Rosy purple. 4 to 5 ft.....	25	1 50	12 50
<i>spicata</i> (Gay Feather). August and September. Deep purple. 3 to 4 ft.....	25	1 50	12 50
LILIUM <i>Canadense</i> (Meadow Lily). July. Shades of yellow. 2 to 4 ft.....			
<i>Philadelphicum</i> (Wood Lily). July and August. Orange-scarlet. 2 to 4 ft.....	25	2 00	15 00
<i>speciosum</i> , var. <i>roseum</i> (Japan Lily). July and August. Rosy white. 2 to 4 ft.....	25	2 00	15 00
<i>tigrinum</i> (Tiger Lily). August. Salmon-red. 3 to 4 ft.....	25	1 50	12 50

HERBACEOUS PLANTS

73

	Each	10	100
LINUM Austriacum (Austrian Flax). June to August. Bluish purple. 18 in.....	\$0 25	\$1 75	
perenne (Perennial Flax). June to September. Clear blue. 18 in.....	25	1 75	
LOBELIA cardinalis (Cardinal Flower). August and September. Scarlet. 2 to 3 ft.....	25	1 50	\$12 50
syphilitica (Blue Lobelia). August and September. Deep blue. 2 ft.....	25	1 50	
LYCHNIS Chalcedonica (London Pride). July to September. Vermilion. 2 to 3 ft.....	25	1 50	12 50
coronaria (Rose Campion). June and July. Crimson. 1½ to 2 ft.....	25	1 25	10 00
coronaria, var. alba . June and July. White. 1½ to 2 ft.....	25	1 25	10 00
Haageana . June and July. Orange-scarlet. 1½ ft.	25	1 50	
vespertina, var. alba plena (White Campion). May to September. White. 1 ft.	25	1 50	12 50
viscaria (Catchfly). June and July. Red. 1½ ft.	25	1 50	12 50
viscaria, var. splendens . (German Catchfly). June and July. Pink. 15 in.....	25	1 50	12 50
LYSIMACHIA clethroides (Loosestrife). July to September. White. 1½ ft.....	25	1 25	10 00
nummularia (Moneywort). June to August. Yellow. Creeping	25	1 50	10 00
LYTHRUM roseum superbum (Rose Loosestrife). July to September. Rose. 3 ft.....	25	1 50	12 50
MERTENSIA pulmonarioides (Virginia Cowslip). May and June. Blue. 2 ft.....	25	1 50	10 00
MONARDA didyma (Oswego Tea). July and August. Scarlet. 2½ ft.....	25	1 50	10 00
didyma, var. Cambridge Scarlet . July and August. Scarlet. 2 ft.....	25	1 50	10 00
didyma, var. splendens . July and August. Crimson-scarlet. 2 ft.....	25	1 50	10 00
MYOSOTIS alpestris, var. Victoria . May and June. Light blue. 6 to 9 in.....	25	1 50	10 00
palustris (Forget-me-not). May and June. Light blue. Spreading.....	25	1 50	10 00
NEPETA glecoma, var. variegata (Ground Ivy). May. Purple. 6 in.....	25	1 50	10 00
ÆNOTHERA fruticosa, var. major (Sundrops). July. Yellow. 1½ ft.....	25	2 00	15 00
fruticosa, var. Youngi (Young's Primrose). June. Lemon. 1½ to 2 ft.....	25	1 50	12 50
Frazeri . June. Rich yellow. 1½ ft.....	25	2 00	15 00
Missouriensis (Large Evening Primrose). June and July. Yellow. 1 ft.....	25	2 00	15 00
speciosa (White Primrose). June and July. White. 1½ ft.....	25	1 50	10 00

ALL GOODS F. O. B. HERE AT LIST PRICES

	Each	10	100
OPHIOPOGON Jaburan, var. aureus variegatus (Snakes's Beard) September. Blue. 6 in.	\$0 50	\$3 50	
Japanese Spurge (Evergreen). May and June. White. 8 in.	50	3 50	\$25 00
PACHYSANDRA terminalis (Japanese Spurge). Evergreen. May and June. White. 8 in.	25	2 00	10 00
Clumps	50	3 50	25 00

PÆONIA. See our Calendar of Hardy Perennials for Special List.

PEONY PRICES given in this list are for stroug, one-year-old plants; and if any of the prices may seem high by comparison with other lists, remember our plants are one year old, true to name, and are offered as low as satisfactory, truly-named stock can be grown.

Chinensis, Double Varieties. Our selection. May and June	\$0 35	\$3 00	\$25 00
Chinensis, Heavy Clumps. Our selection....	1 50	12 50	
Chinensis, Single Varieties. Our selection..	35	3 00	25 00
Chinensis, Single Varieties, Heavy Clumps. Our selection	1 50	12 50	
corallina. May. Single. Reddish purple..	35	3 00	25 00
Moutan (Tree Peony). May and June. Different colors	1 00	9 00	
officinalis, var. rubra plena. Early April. Double; deep crimson.....	50	4 00	35 00
officinalis, var. rosea plena. Early April. Double; pink	1 00	9 00	
tenuifolia. Early April. Single; deep maroon.	50	4 00	
tenuifolia, var. plena. Early April. Double; maroon	50	4 00	
triternata. April. Single. Bright red....	35	3 00	25 00
PAPAVER bracteatum. June. Blood-red. 4 ft..	25	2 00	12 50
nudicaule (Iceland Poppy). All summer. Many colors. 1 ft.....	25	1 50	10 00
orientale (Oriental Poppy). June. Orange-scarlet. 2 ft.....	25	2 00	12 50
PARDANTHUS. See <i>Belemcanda</i> .			
PENTSTEMON barbatus, var. Torreyi (Torrey's Beard Tongue). June to August. Scarlet. 3 to 4 ft.....	25	1 50	10 00
diffusus. May to July. Blue. 1 ft.....	25	2 00	15 00
grandiflorus. June to August. Purplish blue. 2 to 2½ ft.....	25	2 00	15 00
lævigatus, var. Digitalis. July and August. White. 3 ft.....	25	2 00	
ovatus. July and August. Purplish blue. 2 to 3 ft.....	25	2 00	

HERBACEOUS PLANTS

75

	Each	10	100
PHLOX <i>amœna</i> . May. Bright pink. 3 to 4 in.	\$0 25	\$1 50	\$10 00
<i>Carolina</i> . May and June. Rosy red. 1 ft.	25	1 50	
<i>divaricata</i> (Wild Sweet William). May and June. Lavender. 1 ft.	25	1 50	12 50
<i>paniculata</i> ; syn., <i>decussata</i> (Perennial Phlox). See our Calendar of Hardy Perennials for Special List. All colors.	25	2 00	15 00
<i>subulata</i> (Mountain Pink). May and June. Rose. Creeping	25	1 50	10 00
<i>subulata</i> , var. <i>alba</i> . May and June. White Creeping	25	1 50	10 00
<i>subulata</i> , var. <i>atropurpurea</i> . May and June. Purple. Creeping	25	1 50	
<i>subulata</i> , var. <i>lilacina</i> . May. Lilac Creeping	25	1 50	12 50
<i>subulata</i> , var. <i>Nelsoni</i> . May and June. Pure white. Creeping	25	1 50	10 00
<i>subulata</i> , var. <i>Model</i> . May and June. Rosy white. Creeping	25	1 50	10 00
PHYSOSTEGIA <i>Virginiana</i> (False Dragonhead). August. Deep rose. 3 ft.	25	1 50	
<i>Virginiana</i> , var. <i>alba</i> . August. White. 3 ft.	25	1 50	10 00
<i>Virginiana</i> , var. <i>speciosa</i> . August. Pink. 3 ft.	25	1 50	10 00
PLATYCODON <i>grandiflorum</i> (Balloon-flower). July. Blue. 1½ ft.	25	1 50	
<i>grandiflorum</i> , var. <i>album</i> . July. White. 1½ ft.	25	1 50	
POLEMONIUM <i>cœruleum</i> (Jacob's Ladder). May to July. Deep blue. 1½ ft.	25	2 00	15 00
<i>cœruleum</i> , var. <i>album</i> . May to July. White. 1½ to 2 ft.	25	2 00	
PRIMULA <i>acaulis</i> (Primrose). May. Yellow. 6 to 9 in.	25	1 50	12 50
<i>capitata</i> (Primrose) Deep lilac. 9 in.	25	1 50	12 50
<i>suaveolens</i> (Cowslip). May. Yellow and orange. 1 ft.	25	1 50	12 50
<i>veris</i> (Polyanthus). May. Yellow and orange-crimson. 6 to 9 in.	25	1 50	12 50
<i>vulgaris</i> (English Primrose). May. Yellow. 6 to 9 in.	25	1 50	12 50
PYRETHRUM <i>roseum</i> (Feverfew) June and July. White pink and red. 1½ to 2 ft.	25	1 50	10 00
<i>roseum</i> fl. pl. Named varieties. 1½ to 2 ft.	35	3 00	
RANUNCULUS <i>aconitifolius</i> fl. pl. (Crow's-foot). June. White. 1½ to 2 ft.	25	1 50	
<i>acris</i> fl. pl. (Yellow Bachelor's Buttons). June. Yellow. 2 ft.	25	1 50	
<i>repens</i> (Double Buttercup). May to July. Yellow. 1 ft.	25	1 50	10 00
ROSMARINUS <i>officinalis</i> (Rosemary). Scented foliage	25	1 50	

ALL GOODS F. O. B. HERE AT LIST PRICES

HERBACEOUS PLANTS

	Each	10	100
RUDEBECKIA laciniata , var. Golden Glow . July to September. Yellow. 8 ft.	\$0 25	\$1 25	\$10 00
Newmani . August and September. Yellow. 1½ ft.	25	1 50	10 00
nitida (Cone-flower). August and September. Pale yellow. 5 ft.	25	1 50	10 00
triloba (Yellow, black cone). August and September. 3 ft.	25	1 50	10 00
SALVIA argentea . June. White, white foliage. 2 ft.	25	1 50	10 00
Caucasicum . July and August. Reddish purple. 3 ft.	25	1 50	10 00
pratensis (Meadow-sage). June to September. Deep blue. 2 to 3 ft.	25	1 50	10 00
SANGUINARIA Canadensis (Bloodroot). White. April. 6 in.	25	1 50	10 00
SANTOLINA incana (Lavender Cotton). July. Deep yellow. 1 ft.	25	1 50	10 00
SAXIFRAGA cordifolia (Rockfoil). April to June. Rosy purple. 15 in.	25	2 00	15 00
SCABIOSA caucasica (Mourning Bride). Lavender-blue. June. 15 to 18 in.	35	2 50	15 00
SEDUM acre (Golden Moss). May and June. Yellow. Spreading	25	1 25	10 00
album . July. White. 4 to 6 in.	25	1 25	10 00
Rhodiola . August. Light pink. 1 ft.	25	1 25	10 00
sexangulare (Stonecrop). June and July. Yellow. 6 in.	25	1 25	10 00
Siboldi . August and September. Pink. 6 to 8 in.	25	1 25	10 00
spectabile (Brilliant Stonecrop). September and October. Rose. 12 to 15 in.	25	2 00	15 00
spectabile , var. atropurpurea . September and October. Purplish crimson. 15 in.	25	2 00	15 00
telephoides . July and August. Pink. 1 ft.	25	2 00	15 00
SENECIO ciliorum . Summer. Yellow. 3 ft.	35	2 50	15 00
pulcher (Groundsel). July to October. Rosy purple. 1½ to 2 ft.	25	1 50	
SILENE pennsylvanicum (Wild Pink). April and May. Rose or white. 9 in.	25	1 25	10 00
SMILACINA racemosa (False Solomon's Seal). April. White. 1½ ft.	25	1 50	
SPIRÆA (Goat's Beard, or Meadowsweet) aruncus . June and July. White. 4 to 5 ft. ..	35	2 50	15 00
filipendula fl. pl. June and July. White. 2 ft. ..	25	1 50	12 50
lobata . July. Pink. 3 to 4 ft.	25	2 00	15 00
palmata . June and July. Deep crimson. 2 ft. ..	25	2 00	15 00
palmata , var. elegans . June and July. White; crimson anthers. 3 ft.	25	2 00	
Ulmaria fl. pl. June and July. White. 3 ft.	25	2 00	
venusta . June and July. Deep pink. Fragrant. 3 ft.	25	2 00	

HERBACEOUS PLANTS

	Each	10	100
STACHYS <i>Betonica</i> ; syn., <i>Betonica rosea</i> . July and August. Rose. 1 ft.	\$0 25	\$1 50	\$12 50
<i>lanata</i> . June and July. Purple. 12 in....	25	1 50	12 50
STATICE <i>tatarica</i> (Sea Lavender). June to August. Red. 15 to 18 in.....	25	1 50	10 00
<i>latifolia</i> (Great Sea Lavender). July and August. Deep blue. 2 ft.....	25	1 50	10 00
STOKESIA <i>cyanea</i> (Stokes' Astor). July to October. Lavender. 1½ ft.....	25	2 00	15 00
<i>cyanea</i> , var. <i>alba</i> . July to October. White. 1½ ft.	50	3 50	
TANACETUM <i>globiferum</i> (Tansy), August. Golden yellow. 3 ft.	25	1 50	10 00
THALICTRUM <i>adlantifolium</i> (Meadow Rue). June. Yellow. 18 in.....	25	1 50	10 00
<i>aquilegifolium</i> (Feathered Columbine). June. White. 2 to 4 ft.....	25	1 50	
<i>polyganum</i> (Tall Rue). June. White. 3 to 4 ft.	25	1 50	
<i>purpurascens</i> . June to August. Purple. 3 to 4 ft.....	25	1 50	
THERMOPSIS <i>Caroliniana</i> . June. Yellow. 3 to 4 ft.	25	1 50	
<i>mollis</i> . May to July. Yellow. 2 to 3 ft...	25	1 50	
THYMUS <i>montanus</i> , var. <i>coccineus</i> (Scarlet Thyme). May. Bright red. 4 in.....	25	1 50	
<i>vulgaris</i> (Common Thyme). May. Lilac. 1 to 2 ft.....	25	1 25	
TRADESCANTIA <i>Virginiana</i> (Spiderwort). June to October. Purple. 2 ft.....	25	1 50	12 50
<i>Virginiana</i> , var. <i>alba</i> . June and July. White. 2 ft.	25	1 50	12 50
TRILLIUM <i>erectum</i> (Wake Robin). March and April. Purple. 9 to 12 in.....	25	1 50	
<i>grandiflorum</i> (Wood Lily) March and April. White. 9 to 12 in.....	25	1 50	
TROLLIUS <i>Europæus</i> (Globe-flower). May to August. Yellow. 2 ft.....	25	1 50	12 50
<i>Japonicus</i> "Excelsior." May to August. Deep orange. 1½ to 2 ft.....	35	2 50	
VALERIANA <i>coccinea</i> (Valerian). June to October. Reddish. 2 ft.....	25	1 50	10 00
<i>officinalis</i> (Hardy Heliotrope). June and July. Rose-pink. 2 ft.....	25	1 50	10 00
<i>rubra</i> . June to October. Red. 2 ft.....	25	1 50	10 00
VERBASCUM <i>Olympicum</i> (Mullein). July to September. Yellow. 6 ft.....	25	1 50	12 50
VERNONIA <i>Arkansana</i> (Ironweed). August to October. Red. 5 ft.....	25	2 00	
<i>Baldwini</i> . August to October. Purple. 4 ft.	25	2 00	

ALL GOODS F. O. B. HERE AT LIST PRICES

	Each	10	100
VERONICA longifolia, var. rosea (Speedwell). July to October. Rose. 1½ ft.	\$0 25	\$1 50	
longifolia, var. subsessilis. August to November. Deep blue. 1½ to 2 ft.	25	2 00	\$15 00
rupestris (Rock Speedwell). June and July. Blue Spreading.....	25	1 50	10 00
spicata. June to September. Bright blue. 1½ ft.	25	1 50	10 00
Virginica. August to September. White. 4 ft.	25	1 50	10 00
VINCA minor (Periwinkle). May. Bright blue. Spreading	25	1 50	10 00
VIOLA pedata, var. bicolor (Bird's-foot Violet). May. Purple and White. 4 in.....	25	1 50	12 50
cornuta, var. Admiration. May to October. Purple. 10 in.....	25	1 25	
Cornuta, var. Lutea splendens. Rich yellow. May to October. 10 in.....	25	1 25	
Cornuta, var. Papilio. Violet blue. May to October. 10 in.....	25	1 25	
Cornuta, var. White Perfection. Pure white. May to October. 10 in.....	25	1 25	

FERNS

ADIANTUM pedatum (Maidenhair Fern). 1 to 2 ft. Moist, shaded positions.

ASPIDIUM acrostichoides (Christmas Fern). 1 to 2 ft. Evergreen. Dry or moist soils in shady places.

Felix-mas (Male Fern). 2 ft. Semi-shaded positions, dry or moist soils.

Goldianum. 2 to 4 ft. Semi-shaded positions, dry or moist soils.

marginale. Evergreen. 1 to 2 ft. Shaded positions, dry or moist soils.

ASPLENIUM Filix-fœmina (Lady Fern). 2 to 3 ft. Open or shaded positions, in moist or dry soils.

BOTRYCHIUM Virginianum (Moonwort). 6 to 12 in. Shaded positions, moist or dry soils.

DICKSONIA punctilobula (Boulder Fern). 2 to 3 ft. For open positions; forms large plantations.

ONOCLEA sensibilis (Sensitive Fern). 1 to 2 ft. For open planting and wet soils.

Struthiopteris (Ostrich Fern). 2 to 4 ft. For open positions, dry or moist soils.

OSMUNDA gracilis (Flowering Fern). 2 to 4 ft. Open or shaded positions, and moist soils.

Claytoniana. 2 to 5 ft. For open plantings, dry or moist soils.

cinnamomea (Cinnamon Fern). 2 to 5 ft. For open or shaded positions, in wet soils.

WOODSIA obtusa. 6 to 12 in. Shady places, in moist soil.

WOODWARDIA angustifolia (Chain Fern). 1 ft. Open or shaded positions, in moist soils.

The above varieties, 25 cts. each, \$2 per 10, \$15 per 100.

The above, 15 varieties, \$3.50, or 100 in 5 varieties, our selection, \$13.50.

TREES AND SHRUBS FOR HEDGES

We shall be pleased to name special prices for plants in large quantity for hedging purposes. Prices per hundred are given on pages indicated.

EVERGREEN TREES

The following are only a few of the varieties that may be used for the purpose, but the list covers the most popular. We ask particular attention to the Hemlock, *Tsuga Canadensis*, which is one of the most popular and at the same time one of the most satisfactory evergreens for hedging purposes.

	PAGE		PAGE
<i>Picea excelsa</i>	9	<i>Thuja occidentalis</i>	15
<i>Retinospora plumosa</i>	13	<i>Thuja occidentalis</i> Warcana ..	16
<i>Retinospora plumosa aurea</i>	13	<i>Tsuga Canadensis</i>	17

DECIDUOUS TREES

A few of the most desirable trees adapted for close planting for hedges are as follows: We call particular attention to the Cocks spur Thorn, *Cratægus Crus-galli*, which makes a magnificent defensive hedge. Strong growth, beautiful foliage and adaptability to trimming place it in the front rank of trees for hedges.

	PAGE		PAGE
<i>Carpinus Americana</i>	32	<i>Cratægus Cordata</i>	34
<i>Carpinus Betulus</i>	32	<i>Cratægus Oxyacantha</i>	34
<i>Cratægus Crus-galli</i>	34	<i>Fagus sylvatica</i>	34

EVERGREEN SHRUBS

There is no doubt that the Boxwood stands first among evergreen shrubs for hedge purposes. The plants we are offering are home-grown, therefore thoroughly acclimated, and will give excellent results. They should not be compared with the freshly imported Box upon which you have to take the risk until it is acclimated.

	PAGE		PAGE
<i>Azalca amoena</i>	18	<i>Ilex crenata microphylla</i>	21
<i>Buxus sempervirens</i>	19	<i>Mahonia aquifolia</i>	22
<i>Buxus sempervirens suffruticosa</i>	21	<i>Mahonia Japonica</i>	22

DECIDUOUS SHRUBS

Of the following the *Berberis Thunbergii* will make the lowest and closest hedge. Next would be the *Ligustrum Regelianum*, but both of these sorts will carry their branches and foliage right down to the ground. Of the other varieties the *Ligustrums* lend themselves readily to shearing for formal hedges, while the *Hibiscus* should be planted where the freer growing hedge is desired and the other sorts should be used where free-growing, untrimmed hedges are wanted.

	PAGE		PAGE
<i>Acanthopanax spinosa</i>	45	<i>Ligustrum Ikota, Regelianum.</i>	52
<i>Berberis Thunbergii</i> and <i>vulgaris</i>	45	<i>Ligustrum ovalifolium, vulgare.</i>	52
<i>Elæagnus longipes</i>	49	<i>Lonicera Tartarica</i>	53
<i>Forsythia Viridissima</i>	50	<i>Rhamnus cathartica</i>	54
<i>Hibiscus Syriacus</i>	50		

INDEX

The following very complete Index will serve for a ready reference to the Trees, Shrubs and Plants, not only by their Botanical names but by the Common or Local names as well.

This list comprises a collection of over 300 species, and nearly 2,000 varieties, to which might be added our large lists of Paeonies, Iris, Chrysanthemums and Phloxes, bringing the total to nearly 3,000 varieties. From this vast array of plant material you may select almost everything required for a complete planting.

In addition to the items given in this list, we have many varieties of Trees, Shrubs and Plants in small quantities, quantities too small to offer in a general list, but covering *a stock quite large enough to supply your wants*, and, therefore, if you do not find in this list the particular item you require, write us about it.

DEPARTMENTS

	PAGE		PAGE
Fertilizers	Third Cover	Vines and Climbing Plants.....	59
General Instructions and Terms..	4	Fruit and Small Fruits.....	60, 61
Evergreen Trees	5	Roses	62
Evergreen Shrubs	18	Herbaceous Plants	64
Deciduous Trees	29	Ferns	78
Deciduous Shrubs	45	Hedge Plants	79
Reeds and Grasses	59	Catalogs	84

SPECIES AND VARIETIES

	PAGE		PAGE		PAGE
Aaron's Beard	51	Alum Root	71	Asclepias	66
Abelia	45	Alyssum	64	Ash	35, 41
Abies	5	Amelanchier	32, 46	Asparagus	61
Aeanthopanax	45	Amelopsis	59	Aspidium	78
Aeanthus	64	Am y g d a l u s. See		Asplenium	78
Acer	29, 30, 31	Prunus	46	Aster	66, 67, 77
Achillea	64	Anehusa	64	Astilbe	66
Aconitum	64	Andromeda (see, also,		Astrantia	66
Aetinidia	59	Oxydendrum),		Aubretia	66
Adam's Needle	27	18, 22, 38		Azalea	18, 19, 45
Adiantum	78	Anemone	65		
Adonis	64	Anthemis	65	Baby's Breath	70
Æsculus	31, 45	Apples	60	Baccharis	46
Allanthus	31	Aquilegia	65	Bachelor's Buttons..	75
Ajuga	64	Arabis	65	Balloon-flower	75
Akebia	59	Aralia	32, 45	Bambusa	59
Alder	31	Arborvitæ ...	6, 15, 16	Baptisia	66
Alkanet	69	Arenaria	65	Barberry	46
Allspice, or Sweet		Aristolochia	59	Barren-wort	69
Shrub	46	Armeria	65	Basswood	42
Almond, Flowering..	53	Aronia	46	Beard Tongue	74
Alnus	31	Arrow-wood	57	Bear's Brech	64
Althæ (see also Hi-		Artemesia	65		
biscus)	50, 64	Arundo	59		

	PAGE		PAGE		PAGE
Beauty Fruit	46	Cerasus	33	Deciduous Shrubs	45
Beech	34, 35	Ceratostigma	67	Deciduous Trees	29-43
Belemcanda	66	Cercidiphyllum	33	Delphinium	68
Bell-flower	67	Cercis	33, 47	Desmodium	51
Bellis	66	Chamomile	65, 66	Desmodium. Sec Les-	
Benzoin	46	Chaste Tree	58	pedeza	48
Berberis	46	Chelone	67	Deutzia	48
Betonica. See		Cherries, Fruit	60	Dianthus	68
Stachys	66, 77	Cherry, Flowering	33	Dicentra	68
Betula	32	Chestnut	32, 61	Dicksonia	78
Bignonia	59	Chinese Angelica		Diervilla	49
Biota	6	Tree	32	Diospyros	34
Birch	32	Chinese Arborvitæ	6	Digitalls	68
Bittersweet	59	Chinese Cedrela	32	Dogwood	33, 47
Black Alder	31	Chionanthus	47	Doronicum	69
Blackberries	61	Chokeberry	46	Dutchman's Pipe	59
Black Haw	58	Christmas Rose	70	Dyers' Greenweed	50
Black Walnut	35, 61	Chrysanthemum	67		
Blanket-Flower	69	Chrysogonum	67	Echinacea	69
Blazing Star	72	Chrysopsis	67	Elæagnus	48
Bleeding Heart	68	Cimicifuga	67	Elder	54
Blood-root	76	Cineraria. See Arte-		Elm	42, 43
Bocconia	66	misia	68	Elscholtzia	49
Boltonia	66	Cinquefoil	53	Elymus	59
Boston Ivy	59	Citrus	47	Empress Tree	38
Botrychium	78	Cladrastris	33	English Primrose	75
Bowman's Root	70	Clematis	59, 68	English Ivy	60
Box	19, 20	Clethra	47	Epimedium	69
Bridal Wreath	55	Columbine	65, 77	Erianthus	59
Buckthorn	53	Comptonia	47	Erigeron	69
Buddleia	46	Cone-flower	69, 76	Eryngium	69
Bugbane	67	Conoclinium	68	Esculent Roots	61
Bugle	64	Convallaria	68	Eulalia	59
Buttercup	75	Coral Berry	55	Euonymus	21, 49, 59
Butterfly Bush	46	Corchorus	47	Eupatorium	69
Butterfly Weed	66	Coreopsis	68	Euphorbia	69
Buttonwood	38	Cornelian Cherry	47	Evening Primrose	73
Buxus	19, 20, 21	Corn-flower	67	Evergreen Shruhs	18-27
		Cornus	33, 47	Evergreen Thorn	21
Calimeris	67	Coronilla	68	Evergreen Trees	5-17
Callirhoë	67	Corylus	47	Exochorda	50
Calycanthus	46	Cotoneaster	21, 48		
Campanula	67	Cowslip	73, 75	Fagus	34, 35
Candytuft	71	Crab Apple, Flow-		False Bittersweet	59
Caragana	32, 46	ering	39, 41	False Camellia	41
Cardinal-flower	73	Cranberry Bush	57	False Dragonhead	75
Carpinus	32	Cranesbill	69	False Indigo	66
Carya	32	Crataegus	21, 34	False Solomon's Seal	76
Caryopteris	46	Crown-Vetch	68	False Wall Cress	66
Catalpa	32	Crow's Foot	75	Fatsia	32
Catchfly	73	Cryptomeria	6	Ferns	78
Ceanothus	46	Cucumber Tree	36	Feverfew	69, 75
Cedar	6	Currants	61	Fir	5
Cedrela	32	Cydonia	48	Flame-flower	72
Cedrus	6	Cypress	12, 13, 41	Flax	73
Celastrus	59	Cytisus	34, 48	Fleabanc	69, 71
Celtis	32			Flowering Almond	53
Centaurea	67	Daisy	66, 67	Flowering Crab Ap-	
Cephalanthus	47	Daphne	21	ple	39
Cerastium	67	Day Lily	69, 70		

PAGE	PAGE	PAGE
Forget-me-not	Hydrangea . . 50, 51, 60	Magnolia 36, 37
Forsythia	Hypericum 51	Mahonia 22
Foxglove	Iberis 71	Maldenhair Tree 41
Fox Grape	Ilex 6, 21, 22, 51	Mallows 69, 71
Fraxinus	Incarvillea 71	Maple 29, 30, 31
Frost Grape	Inula 71	Master-wort 66
Fruit 60, 61	Iris 72	Matrimony Vine 53
Funkia	Ironweed 77	Meadow Rue 77
	Itea 51	Meadow-sage 76
	Ivy 59, 60, 73	Meadow Sweet 76
		Mertensia 73
Gaillardia	Jacob's Ladder 75	Mintshrub 49
Galega	Japan, or Boston Ivy 59	Mist-flower 68
Gay Feather	Japan Cypress 13	Mist, or Smoke Tree 54
Gentiana	Japan Judas 47	Mock Orange 53
Geranium	Japan Quince 48	Monarda 73
Geum	Japanese Holly 22	Moneywort 73, 78
Gillenia	Japanese Maples 31	Monkshood 64
Ginkgo	Japanese Snowball 58	Morus 37
Gleditschia	Jasmine 51	Mountain Ash 41
Globe Flower 47, 77	Jasminum 51	Mourning Bride 76
Gloxinia	Jersey Tea 46	Mulberry 37
Glyptostrohus. See	Judas Tree 33	Mullein 77
Taxodium.	Juglans 35	Myosotis 73
Goat's Beard	June Berry 32	Myrica 53
Goat's Rue	Juniperus 7, 8, 9	
Gold-flower		Negundo. See <i>Acer</i>
Golden Bell	Kalmia 22	<i>Negundo</i> 37
Golden Chain	Kentucky Coffee Tree 35	Nepeta 73
Golden Glow	Kerria. See <i>Corchor-</i>	Nettle Tree 32
Golden Joint	<i>us</i> 47, 54	Nuts 61
Golden Tuft	Kniphofia 72	Nyssa 37
Gooseberries	Koelerantaria 36	
Goundsel Shrub 46, 76	Kudzu Vine 60	
Grapes		Oak 40
Guelder Rose	Laburnum 36	Oenothera 73
Gymnocladus	Larch 36	Old Man 65
Gypsophila	Larix 36	Old Woman 65
	Larkspur 68	Oleaster 49
Halesia	Lathyrus 72	Onoclea 78
Hamamelis	Laurel 22	Ophiopogon 74
Hardy Orange	Lavandula 72	Orange, Hardy 47
Hardy Roses 62, 63	Lavender 72	Oriental Plane 38
Harebell	Lavender-cotton 76	Osier 47
Hawthorn	Leather-flower 68	Osmanthus 22
Hazel	Lespedeza 51	Osmunda 78
Hedera	Leucothoe 22	Oswego Tea, or Fra-
Hedge Plants	Liatris 72	grant Balm 73
Helenium	Ligustrum 51, 52	Oxydendrum 38
Helianthus	Lilac 56, 57	
Heliopsis	Lillum 72	
Heliotrope	Lily 69, 70, 72, 77	
Helleborus	Lily-of-the-valley 68	
Hemerocallis or Day	Linden 42	
Lily	Linum 73	
Lily	Liquidambar 36	
Hemlock	Liriodendron 36	
Hepatlea	Liver Leaf 71	
Herbaceous Plants.	Lobelia 73	
64-78	Locust 35, 40	
Heuchera	London Pride 73	
Hibiscus 50, 51, 71	Lonicera 52, 60	
Hickory	Loosestrife 73	
High Cranberry Bush 57	Lychnis 73	
Holly 6, 21, 22	Lycium 53	
Hollyhocks (see, also,	Lysimachia 73	
Althæa) 64, 71	Lythrum 73	
Honey Locust		
Honeysuckle 45, 52, 60		
Hornbeam		
Horse-Chestnut		

PAGE		PAGE		PAGE		
	Phladelphus	53	Scabiosa	76	Tecoma. See Bignonia.	
	Phlox	75	Scarlet Trumpet	60	Thalictrum	77
	Physocarpus	53	Schizophragma	Hy-	The Pearl	64
	Physostegia	75	drangeoides	60	Thermopsis	77
	Picea	9, 10	Sciadopitys	14	Thorn	34
	Pieris	18	Scotch Broom	48	Thorn Evergreen	21
	Pinks	68, 75, 76	Sea Holly	69	Thrift	65
	Pinus	10, 11	Sea Lavender	77	Thuja	15, 16
	Plane, Oriental	38	Seal-flower	68	Thyme	77
	Platanus	38	Sedum	76	Thymus	77
	Platycodon	75	Senecio	76	Tickseed	68
	Plumbago	67	Service Berry	46	Tiger Lily	72
	Plum, Flowering	39	Shad Bush	32	Tilia	42
	Plums, Fruit	61	Sheep-berry	57	Tradescantia	77
	Podocarpus	12	Shrub Yellow Root	58	Tree of Heaven	31
	Polemonium	75	Shrubby Cinquefoil	53	Trillium	77
	Polyanthus	75	Siberian Pea	32, 46	Trollius	77
	Poplar	39	Silene	76	Trollius	77
	Poppy	66, 74	Silk Vine	60	Trumpet Vine	59
	Populus	39	Silver-cork Flr	5	Tulip Tree	36
	Potentilla	53	Skimmia	22	Turtlehead	67
	Primrose	73, 75	Small Fruits	61		
	Primula	75	Smilacina	76	Ulmus	42, 43
	Privet	51, 52	Snakeroot	67, 69	Umbrella Pine	14
	Prunus. See, also,		Snake's Beard	74	Umbrella Tree	36
	Cerasus	39, 53	Sneeze-wort	70		
	Pseudo-tsuga	12	Snowball	58	Vaccinium	57
	Pueraria	60	Snowberry	55	Valerian	77
	Purple Mist	54	Snowdrop Tree	35	Valeriana	77
	Pyrethrum	75	Sophora	41	Varnish Tree	35
	Pyrus	39, 54	Sorbus	41	Verbascum	77
			Sorrell Tree	38	Vernonia	77
	Quercus	39	Sour Gum	37	Veronica	78
	Quinces	61	Speedwell	78	Viburnum	57, 58
			Spice Bush	46	Vinca	78
	Ranunculus	75	Spiderwort	77	Vines and Climbing	
	Raspberries	61	Spindle Tree	50	Plants	59
	Red Bud, or Judas	33	Spiraea	46, 54, 55, 66, 76	Viola	78
	Red Hot Poker	72	Spruce	9, 10, 12	Violet	78
	Reeds and Grasses	59	Spurge	69, 74	Virgilia	33
	Retinospora	12	Stachys	77	Virginia Creeper	59
	Rhamnus	53	Staphylea	53	Vitex	58
	Rhododendron	23-27	Star-wort	67	Vitis	60
	Rhodotypos	53	Statice	77		
	Rhubarb	61	Stephanandra	55	Wake Robin	77
	Rhus	39, 54	Stokesia	77	Walnut	35, 61
	Ribbon Grass	59	Stokes' Aster	77	Wax Myrtle	53
	Robinia	40, 54	Stonecrop	76	Wayfaring Tree	57
	Rock Cress	65	Strawberries	61	Welgela	49
	Rockfoil	76	Strawberry Bush	50	White Campeon	73
	Rose Acacia	54	Stuartia	41, 55	White Fringe	47
	Rose Campeon	73	Styrax	55	Willow	41
	Rosemary	75	Sumac	39, 54	Windflower	65
	Rose of Sharon	50	Summer Grape	60	Winter Berry	51
	Roses	62, 63	Sundrops	73	Wistaria	60
	Roseholbo	75	Sunflower	70	Witch Hazel	50
	Rosy Muf II	61	Swamp Huckleberry	57	Withe-rod	57
	Rubus	64	Sweet Fern	47	Wolf's-bane	64
	Rudbeckia	70	Sweet Gum	36	Woodsia	78
	Rugosa Rose	64	Sweet William	68	Woodwardia	78
			Sweet Pepper Bush	47		
	Sallsburla	41	Sweet Shrub	46	Xanthoceras	58
	Salix	41	Synthlipsis	62	Xanthorrhiza	58
	Salvia	76	Syntherisma	30		
	Samhucus	74	Syntherisma	55	Yarrow	64
	Sandwort	74	Syntherisma	55, 57	Yellow Wood	33
	Sanguinaria	74	Taxodium	77	Yew	12, 14, 15
	Santolina	76	Taxus	63	Yucca	27
	Sassafras	61	Taxus	41		
	Saxifraga	74	Taxus	41, 45	Zinnia	18

OUR CATALOGUES

SUGGESTIONS FOR EFFECTIVE PLANTING.

This Catalog embodies an original and distinctive idea. For the convenience of those interested in any of the many varied planting problems we have arranged our catalog of Evergreens, Trees, Shrubs and Plants, by grouping together those plants best adapted for particular uses, as for instance, evergreens for formal effects; trees for screens and wind-breaks, flowering shrubs for mid-summer effects, and so on.

We believe it will prove a valuable aid to our patrons.

DISTINCTIVE TREES AND PLANTS.

An attractive booklet beautifully illustrated and descriptive of a number of charming Evergreens, Trees and Shrubs that are worthy of your better acquaintance.

THE ANDORRA HANDBOOK.

A beautifully illustrated descriptive guide to Trees and Shrubs with articles on their culture, pruning and place in planting. Price, 50 cents; and we are pleased to credit the amount on the first purchase amounting to \$5.

A RE-PRINT FROM THE "NATIONAL ARCHITECT."

This is of special interest to owner, architect or landscape architect who may be interested in the planting of large Evergreens and Trees for immediate effect.

PLANTING INSTRUCTIONS.

The finest plant grown will fail unless properly planted and given good after care when it reaches your hands. To secure the best results these instructions will prove invaluable. A copy is sent with every order.

SPRING AND FALL PRICE LISTS.

This Price List is revised semi-annually so as to conform to our actual stock records and is published for the convenience of large users of nursery stock. We are not jobbers but the largest nursery growing high-class stock for discriminating buyers.