

Historic, Archive Document

Do not assume content reflects current scientific knowledge, policies, or practices.

62101

U.S. Department of Agriculture
★



ANN HATHAWAY'S COTTAGE, STRATFORD-ON-AVON

Border of New May-flowering Tulip, Barbara Pratt. Considered by Tulip lovers to be one of the finest seedling Tulips of recent introduction. For description see page 10. **SPECIAL OFFER: \$1.25 each, \$12.50 per doz., \$95 per 100**

Bulbs for
1930

Stumpp & Walter Co
NEW YORK CITY

Advance
Offering

Six *New and Rare Daffodils*

	Each	Doz.	100
1 Bernardino	\$0 40	\$4 00	\$30 00
2 Cleopatra	50	5 00	40 00
3 Lord Kitchener ..	35	3 50	25 00
4 Jonquil Buttercup	30	3 00	20 00
5 Red Beacon	35	3 50	25 00
6 Van Waveren's Giant	50	5 00	35 00



Why We Ask for Your Order by July 15

ORDER NOW AND SAVE MONEY

High-Quality Bulbs can never be purchased at low prices. Our large contracts, placed at favorable advance prices in England, Holland, France, Japan, and America, as well as the large number of Daffodils which are grown on our own farm on Long Island, make it possible for us to extend these savings in prices to our clients for placing their orders by July 15. Our Government has indicated that the tariff on Tulips, Lilliums, and Lily-of-the-Valley pips will be increased 300 per cent, if the present Tariff Bill is passed; Crocus bulbs 100 per cent. It will be decidedly to your advantage, both from the selection of varieties and the low prices, which are based on the current tariff, to place your order *now*.

TIME OF DELIVERY

Bulbs and roots mature and ripen during the late summer and autumn and shipments will be made as follows in the absence of instructions to the contrary.

SEPTEMBER—includes **Lilium Harrisii**, **Lilium formosum**, **Lilium candidum**, **Freesias**, and **Bulbous Irises**.

OCTOBER OR MAIN SHIPMENT includes the general line of bulbs, such as **Tulips**, **Narcissi**, **Hyacinths**, **Crocus**, and **Miscellaneous Bulbs** listed on pages 34 to 36.

NOVEMBER AND DECEMBER—includes Lilliums and Lilies-of-the-Valley. We endeavor to get all Lilliums and Lilies-of-the-Valley shipped by early December. We, however, frequently do not receive the **three varieties of Japanese Lilies**, as listed on pages 31 and 32, namely, **auratum**, **magnificum**, and **album** from the Orient until the ground has become frozen in some parts of the country. These may be kept in a cool cellar and planted in the spring, or, if you so advise, we can ship these three items in the spring.

Guarantees. Our method of handling bulbs practically precludes the possibility of stock proving unsatisfactory, and the percentage of complaints is really negligible. We guarantee all bulbs sent out to be true to name and of proper flowering age. It is, however, impracticable, owing to contingencies of soil, climate, season, or faulty planting, to guarantee that all bulbs we send out will flower satisfactorily. We make complete trials of all the varieties we send out at our own trial-grounds and know, from extended experience, that all our bulbs flower satisfactorily if given just ordinary attention.

TERMS OF PAYMENT

We do not send bulbs C. O. D. unless you request it, but ship your order when bulbs arrive, mailing invoices at the same time, and all bills are due in 30 days, net.

For those who desire to send us cash with the order, and thereby forfeit the use of the interest on the same from the time they send it until bulbs are shipped, we ask that they **deduct a cash discount of 5 per cent from their order to compensate them for this loss.**

WE FURNISH ALL BULBS, 6 of a variety at the dozen rate; 25 of a variety at 100 rate; 250 of a variety at 1,000 rate.

SHIPPING INSTRUCTIONS

We ask for full shipping directions. State whether bulbs are to be shipped by parcel post or express, and by what route. In the absence of instructions we ship by whatever method and route we believe best.



Six million Daffodil blooms at our Mile-Front Daffodil Farm at Islip, L. I.

From Grower to Planter. The above illustration is a photograph of our 35-acre farm of Daffodils at Islip, L. I. We have been growing Daffodils on Long Island for the past six years, and the results obtained from bulbs which we have sent out convince us that the soil and climate are well suited to them there.

GEORGE G. STUMPP, *President*
JULIAN H. WALTER, *Treasurer*
THOMAS F. KEARNEY, *Asst. Treas.*
WILLIAM A. SPERLING, *Secretary*

New York Telephones: BARCLAY { 1110 1111 1112
1113 1114 1115

Copyright, 1930, by Stumpp & Walter Co.

Stumpp & Walter Co.

30-32 Barclay and 40 Vesey Sts., New York City
BRANCH STORES: Baltimore, Md., White Plains, N. Y., Newark, N. J.
Stamford, Conn., Hempstead, L. I.



GIANT DARWIN TULIPS, May-Flowering

For the herbaceous border, massed in clumps along the edge of shrubbery, or as cut-flowers for vases, these are conceded to be the superior of all the Tulips

The enthusiasm for the Darwin Tulip is not due to fad or popular fancy, but rather to an awakened sense of appreciation of its majestic beauty. The rich, bright colors of the blooms, their somber tones, their many pale and more lovely colors, produced on strong, gigantic stems from 2 to 3 feet, all vie with one another and capture even the casual observer of spring-flowering bulbs. Once grown, the amateur becomes interested and soon becomes a fancier with a hoard of varieties, excusably jealous of every one he or she grows.

For the borders among other hardy flowers, in formal gardens in conjunction with Single Early Tulips, for isolated groupings against a background of shrubs, or for combinations of delicate colors for effects of contrast in the flower-garden, the Darwins are without a peer.

They range in color from the daintiest pink, rose, salmon, red, etc., to deep, rich crimson; from lavender through mauve and light blue to violet-purple and the so-called "Black Tulip"; and we also offer one variety of yellow. For a complete list of yellow varieties we suggest selections be made from Cottage and Hybrid Tulips offered on pages 10 and 11. All buff and bronze shades frequently classed as Darwins are Breeders.

CULTURE.—Bulbs should be planted 5 to 6 inches deep and not less than 5 inches apart. Sand to the depth of 1/2 inch at the base of the bulbs will amply repay the trouble by the provision for drainage during wet weather. For forcing, bulbs should be planted as soon as received, and the flowers appear to better advantage if pots a trifle deeper than the ordinary bulb-pans are used. We recommend what are termed azalea-pots for this purpose. A temperature of 55 to 60 degrees is recommended, for if allowed to "come gently," larger flowers and longer stems may be had.

Afterglow. Deep, rosy orange, with salmon shading at edges of petals; inside deep orange with yellowish base. A sport of *Baronne de la Tonnaye*, which is of remarkable interest because it is the first instance of a Darwin sporting to the Breeder tones. A showy Tulip for outdoors. Height 26 inches. \$1 00 \$8 00 \$78 00

Anton Mauve. A splendid exhibition variety on account of its wonderful stately habit. The flower is of unusually large size, and an even tone of deep bluish lilac. Excellent for the border or for pots. Height 32 inches. 1 30 10 00 98 00

Aviator Hawkes. This new variety, similar in color and class to *Princess Mary*, will become very popular when large stocks are obtainable. The blooms are an even tone of deep rose, borne on tall, strong stems. An attractive exhibition variety. Height 32 inches. .56c. each . . . 6 50 50 00

Aphrodite. Clear, silvery rose-pink with white base; a good-sized round flower of exquisite color on a very tall, stiff stem. Height 34 inches. 2 00 15 00

Bartigon. Fiery crimson with white base. Doz. 100 1,000
Height 26 inches. \$0 70 \$5 00 \$48 00

Baronne de la Tonnaye. A long beautiful flower; clear carmine-rose at the midrib, base toning off to soft pink at the edges; white, tinged blue. Excellent for early March forcing and just as fine for outdoor beds, where it keeps up a splendid show for a long time. Height 26 inches. 70 5 00 48 00

Bleu Celeste. A Tulip of wonderful size and shape; the color is a bright violet-purple, white base tinged blue. Height 30 inches. 3 50 25 00

Blue Perfection. Quite a new color in Darwins — bright violet, bordered heliotrope; base white with blue ring; anthers black. The petals are pointed and very slightly reflexed. Very fine flowers of good form and substance. Height 30 inches. \$2.50 each. . . 25 00

Centenaire. Rich violet-rose, with a large blue center; immense flower of perfect form. Magnificent for the border; excellent for forcing. Height 32 in. 75 5 50 52 00

Giant Darwin Tulips (May-Flowering), continued

Chant de Cygne. This is a very large flower of a brilliant deep rosy red, tinged soft salmon-rose, borne on strong stem. A new variety of excellent merit. Height 30 inches. Doz. 100 1,000 \$1 50 \$12 00

Cherry Blossom. This beautiful Tulip is a soft rose sport of Pride of Haarlem. The flowers are of splendid substance and an even tone of soft rose. Height 30 inches. Doz. 100 1,000 1 30 10 00 \$98 00

City of Haarlem. Intense dark scarlet with darker bloom; large steel-blue base and white halo; wonderful cup-shaped flower, with petals incurving slightly at the tips. One of the finest brilliant red Darwins. Height 27 inches. Doz. 100 1,000 2 00 15 00

Clara Butt. Beautiful clear salmon-pink. No other variety offered by us has the same distinctive and pleasing color. Height 22 inches. Doz. 100 1,000 60 4 50 42 00

Dream. Large flower, perfect in form, on a tall, strong stem; color rosy lilac and mauve, with claret-purple interior. Height 24 inches. Doz. 100 1,000 80 6 00 58 00

Duchess of Hohenberg. Pale slaty lilac-mauve, with stripe of rosy heliotrope; inside pale lilac, with white base. Enormous, long flower on a tall, stiff stem. Height 29 inches. Doz. 100 1,000 4 00 30 00

Eclipse. A deep rich glowing blood-red. Large flower of fine form; the best of its color. Height 26 inches. Doz. 100 1,000 2 50 20 00

Edmee (Beauty). A beautiful shade of cherry-rose with a lighter border. On the order of Baronne de la Tonnaye, but brighter in color. Height 25 inches. Doz. 100 1,000 75 5 50 52 00

Elephant. Smoky lavender, flushed blue on outer petals, pure white base. A very large flower on a graceful stem. One of the early Darwins and used for exhibitions on account of its length of stem and size of bloom. Height 32 inches. Doz. 100 1,000 .90c. each. \$9 00 \$65 00

Euterpe. A beautiful shade of mauve, edged lilac, white center, with a blue halo. A very refined color when forced. Height 26 inches. Doz. 100 1,000 80 6 00 \$58 00

Farncombe Sanders. A bright shade of scarlet, with a clear white base, contrasting well when the flower is fully open. A broad-petaled flower of large size. Height 25 inches. Doz. 100 1,000 70 5 00 48 00

Faust. Satiny purple, with blue base; very large flower of fine form; a splendid Tulip. Height 30 inches. Doz. 100 1,000 1 00 8 00 78 00

Feu Brillant. A brilliant clear scarlet, and claimed by some growers to be one of the best scarlets in cultivation. Large flowers. Forces indoors very readily. Height 28 inches. Doz. 100 1,000 90 7 00 68 00

Flamingo. An even tone of pale shell-pink. A very exquisitely colored Darwin, of refined coloring and form. Height 28 inches. Doz. 100 1,000 85 6 50 62 00

Frans Hals. Splendidly formed, very large flower; bright bluish violet, base blue, with white halo. Height 28 inches. Doz. 100 1,000 1 30 10 00

Giant. A flower of enormous size and of wonderful substance; a deep reddish purple in color with a white base. Height 30 inches. Doz. 100 1,000 1 30 10 00

Glow. Deepest shade of crimson-scarlet—a color of wonderful brilliance, not unlike that of the Oriental poppy. The flowers are of large size, borne on stems 20 inches long. Doz. 100 1,000 \$0 70 \$5 00 \$48 00

Jubilee. Blue-purple, with a white base, marked blue; a flower of large size and heavy substance. Height 29 inches. Doz. 100 1,000 1 60 12 00

Kathleen Parlow. A distinct and new shade among the light rose-pink varieties—silvery rose-pink; inside soft old-rose with creamy white base. Flowers are of large size, excellent substance, and are borne on long, strong stems. Height 30 inches. Doz. 100 1,000 \$1 each. 10 00

King Harold. Intense ruby-crimson, center rich black; very tall and of fine form; new and stately variety; very distinct. Height 24 inches. Doz. 100 1,000 75 5 50 52 00

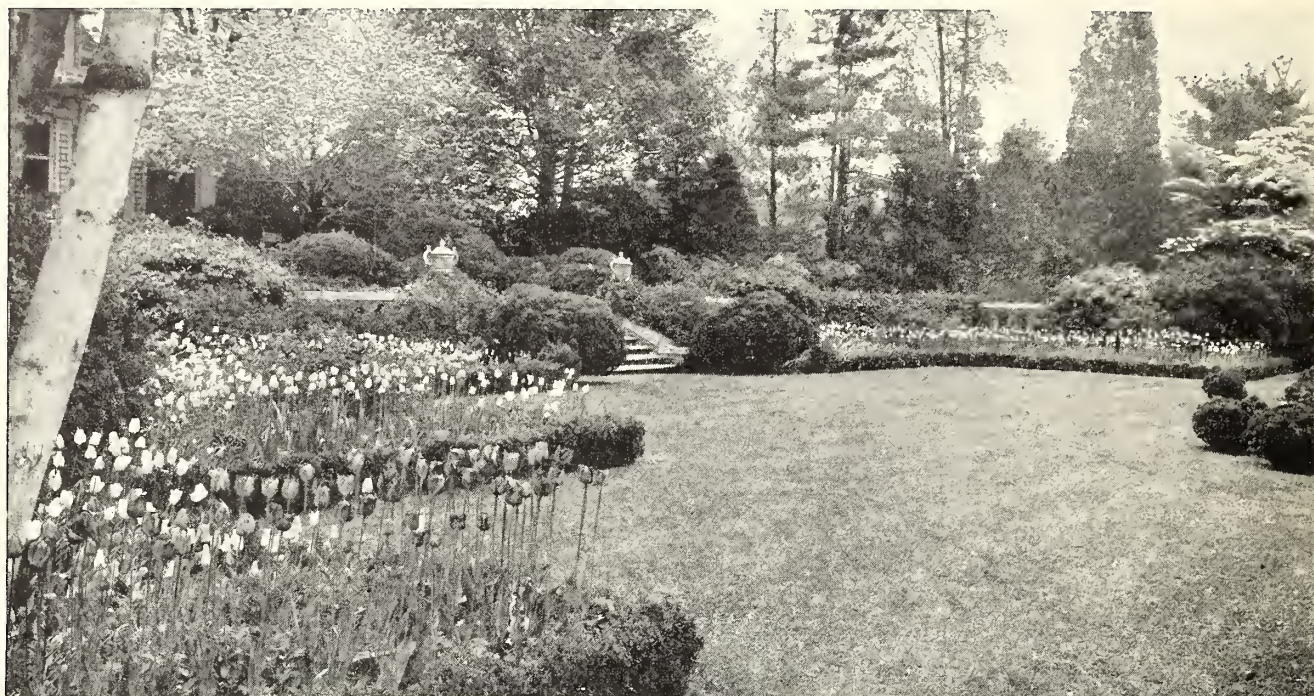
King George V. Glowing salmon-scarlet, shaded brilliant orange-scarlet with blue base. Height 25 inches. Doz. 100 1,000 2 00 15 00

King Mauve. This variety has been well named. It is, perhaps, best described as a uniform soft lavender, with a silvery sheen. The long, large, well-shaped flower is borne on a good strong stem. One of the finest of all the recent novelties. Doz. 100 1,000 \$3 each. 30 00

La Fiancee. Deep rose, shading to old-rose and delicate pink at the edges, with blue base. Of large size, and very effective when planted with mauve and dark lavender sorts. Height 30 inches. Doz. 100 1,000 1 00 8 00 78 00



A Dutch Bulb-Garden—Darwin Tulips, one variety to each of the various and pleasingly shaped beds



In this well-planned garden, May-Flowering Tulips add a delightful touch of color

Giant Darwin Tulips (May-Flowering), continued

La Tristesse. Deep slaty blue, with white base, very distinct in color; medium-sized flower. Height 26 inches.....	Doz.	100	1,000			
		\$0 90	\$7 00	\$68 00		
La Tulipe Noire (The Black Tulip). The nearest in color to the so-called "Black Tulip." Deep maroon-black, which has a velvety sheen in the sunlight. Height 25 inches.		90	7 00	68 00		
Le Notre. Beautiful shade of bright pink, blue base shaded white. Excellent for early forcing. Height 26 inches..		80	6 00	58 00		
Louise de la Valliere. Brilliant cherry-rose with pale blue base starred white. A very clear and beautiful color. Height 24 inches.	I 60	12 00				
Madame Krelage. Bright rosy lilac, with a pale silvery margin. A good forcing variety and excellent for the border as well. Height 28 inches.....	70	5 00	48 00			
Massenet. An exquisite shade of pale rose, with a broad margin of creamy white; base bright blue. A grand acquisition to any collection however rare. Height 30 inches.....	I 00	8 00	78 00			
Matchless (Roi d'Islande). Soft old-rose, with a narrow white border; inside soft violet-rose, with a blue base. A very beautiful soft color and effective in the border. Height 28 inches....	I 00	8 00	78 00			
Maya. A large, well-formed flower of soft heliotrope shade, borne on a good strong stem. One of the finest novelties of recent introduction. Height 30 inches.....	7 00	50 00				
Melicette. A beautiful pure lavender, shading to paler lavender at the edges, with a beautiful blue base; quite the purest lavender Darwin. A flower of large size. Height 26 inches.....	I 00	8 00	78 00			
Mrs. Potter Palmer. Bright purplish violet, base white; a large flower. Very attractive for border planting. Height 28 inches.....	90	7 00	68 00			
Mystery. An unusual flower of a deep shiny black color, base blue. A variety used for exhibition purposes on account of its size. Height 30 inches.....	3 50	25 00				
Orange Perfection. Brilliant salmon-orange, shaded scarlet as the flower ages; base bright blue. Large flower of a very attractive color. Height 26 inches.....	Doz.	100	1,000	\$4 00	\$30 00	
Painted Lady. A pale creamy white, with a faint tinge of heliotrope, gradually becoming almost pure white as the flower ages. Height 27 inches.	70	5 00	\$48 00			
Philippe de Comines. A grand flower of dark, polished mahogany color, with a purple base. One of the best of the less expensive sorts in this color. Height 24 inches.....	80	6 00	58 00			
President Harding. A new variety which has proved very fine for exhibition work. The large, deep purple flower shaded violet, is borne on tall, strong stems, and is of unusual substance. Height 32 inches.....	3 00	20 00				
President Taft. Deep ox-blood-red, with dusky bloom. Very large flower, borne on strong stiff stem. Height 30 inches.....	I 00	8 00	78 00			
Pride of Haarlem. Magnificently formed flower of immense size, brilliant, deep rose, shaded scarlet, with light blue base. This variety, perhaps the most widely known for its stately habit and glorious color. Height 36 inches.	60	4 50	42 00			
Prince of the Netherlands. Lively shade of cerise-scarlet, edged rose, with a blue base. Height 31 inches.....	75	5 50	52 00			
Princess Elizabeth (Julie Vinot). Beautiful clear deep pink, changing with age to rose-pink; white base. Large flower, quite like a rose when first open. Height 26 inches.....	70	5 00	48 00			
Princess Mary. Bright carmine-rose with margin of rose-pink; inside clear carmine-rose with blue base and white halo; huge flower on a splendid stem. Height 28 inches. .75 cts. each..	7 50	60 00				
Professor Rauwenhoff. Bright cherry-red, beautiful blue base; very large flower of wonderful substance. Height 24 inches....	70	5 00	48 00			

Giant Darwin Tulips (May-Flowering), continued

Psyche. Old-rose, edged white, inside lighter rose, base blue. A very lovely variety for pots. Height 26 inches.	Doz.	100	1,000	
	\$	75	\$5	\$52 00
Pulcinella. A new tone of dark salmon-orange in the Darwin Tulips. A very attractive variety when grown in pots for exhibition on account of its fine strong stem and large flower. Height 32 in.	I	60	12 00	
Purple Perfection. The color of the flower is a bright, glossy purple, large in size, and of wonderful substance. A splendid variety in the border, grows to the height of 26 inches.		90	7 00	68 00
Queen of Hearts. A very beautiful soft rose sport of the splendid scarlet variety, Farncombe Sanders. Splendid for forcing or exhibition. A new Tulip and a very valuable addition, which should be grown in all good collections. Height 28 inches.	I	00	75 00	
Raphael. Deep maroon-purple of rich tone, with blue base starred white. Very tall, large flower. The best reddish purple. Height 30 inches.	I	20	9 00	88 00
Remembrance. Pale lilac, general tone of the flower silvery. Quite distinct; large flower. Height 25 in.		90	7 00	68 00
Reve d'Amour. A very interesting variety on account of its changing color. It opens white, with carmine spots and edge, but gradually changes to reddish violet while only the base remains white, anthers black. A very beautiful variety of excellent substance. Height 28 inches.		20	00	
Rev. H. Ewbank. An exquisite shade of soft lavender-violet, slightly shaded silver-gray. A variety of great merit on account of its lovely color; borne on stems 23 inches long.		70	5 00	48 00
Richmond. Best described as an even tone of currant-red, base grayish blue, with black anthers. A red sport of the well-known variety, Clara Butt. Height 28 inches.		2	50	20 00
Ronald Gunn. Bright shade of violet, edged pale lavender, with a conspicuous white base. A flower of splendid shape and even more exquisite when grown in pots. Height 26 inches.		90	7 00	68 00
Sir Trevor Lawrence. Violet-maroon, with flush of ashy purple; inside violet-maroon with white base; very large, cup-shaped flower, on tall stem. Height 33 inches.	I	20	9 00	88 00
Suzon. Center of petals buff-rose, shading to blush at the margin, with white base, delicately marked blue. A strong grower of fine stately habit. Height 25 in.		80	6 00	58 00
The Bishop. Soft bluish violet, with ashy bloom; inside paler, with white base; a long flower of very artistic color. Height 28 inches.		6	50	50 00
Valentin. A magnificent, large, shapely Darwin Tulip. Light violet with a blue base. Height 22 inches.	I	00	8 00	78 00
Venus. A splendid exhibition variety—the finest of its color. Pure, even tone of silvery rose, white base, marked with a pale blue ring. Height 28 in.		4	00	30 00
Whistler. A variety much admired on account of its bright, transparent color—a bright shade of ruby-scarlet. Height 26 inches.		75	5 50	52 00
White Queen. A splendid white variety; when first opening is pale rose but quickly turns white—a truly exquisite color. Height 24 inches.		70	5 00	48 00

White Perfection (Helen Eaking). Another pure white Darwin Tulip, differing from Zwanenburg in our list in that the flower is larger. The shape of the flower greatly resembles the variety Farncombe Sanders, of which it is a seedling. We predict large demand for this splendid variety, as soon as large stocks are available and prices can be reduced. Height 29 inches.	Doz.	100	1,000	
	\$	30	each.	\$30 00
William Copland. Uniform lilac-rose. A variety that was greatly admired in our exhibit of bulbs grown in pots at the New York Flower Show this year. May be forced as early and as easily as the Early Tulips. The color, when grown indoors, becomes a most beautiful lavender. Height 24 inches.		70	\$5 00	\$48 00
William Copland Pink. A pink sport of the well-known William Copland, and promises to become a popular forcing Tulip. It has the same excellent forcing qualities as its parent, and a very beautiful soft rose-pink color. Fine for exhibition.			\$2.50 each.	25 00
William Pitt. Very dark crimson, with outer petals. Of great size and beauty. Height 24 inches.		70	5 00	48 00
Yellow Giant. A rich deep golden yellow, fine, large, globular flower, carried on long, strong stem. Splendid for exhibition. Height 28 in.			\$1.25 each.	12 50
Zulu. Deep, velvety purple-black; large, egg-shaped flower of very distinct form. Fine for border or forcing. Height 27 inches.		80	6 00	58 00
Zwanenburg. This variety, which first appeared in a specialist's culture, was noted by us in 1913 when there existed six bulbs. It is the first example of a pure white Darwin. Still high in price on account of its scarcity. Height 28 inches.		3	50	25 00



Big bowl-like flowers to add joy to our May days spent in the garden

Superb Prize Mixture. The wonderful interest in these splendid Tulips has brought out a great many varieties too numerous for listing, except those considered the best. In addition to some of the varieties listed above, our mixture contains an equal proportion of many others. Brilliant effects may be obtained by the planting of this mixture of choice named sorts. 60 cts. per doz., \$4 per 100, \$38 per 1,000.



DUTCH BREEDER TULIPS, May-Flowering

Breeder Tulips are very similar in habit to the Darwins, and flower at the same time. Their chief characteristic is their immense blooms, borne on strong, stiff stems, many of them longer than the most gigantic Darwins. The revival of the taste for art colors has made these Tulips, at one time very popular in England, strong favorites with American enthusiasts, who find in their bronze, buff, and brown shades excellent material for contrasting with the light and bright colors of the Darwins. They require the same cultural treatment as the Darwins.

Abd-el-Kader. Dull bronze-yellow, shading to light bronze at edge of petals; inside bronze-brown, with olive-green base; good-sized flower. Height 26 inches. **\$1 per doz., \$8 per 100.**

Apricot. Dull, bronzy buff, shaded deep apricot, base olive-green. A splendid border variety, frequently having an extra number of petals. Height 25 inches. **90 cts. per doz., \$7 per 100, \$68 per 1,000.**

Bacchus. Dark violet-blue, the outside of the petals having a darker bloom, base starred white. Quite the nearest approach to dark blue in late Tulips. Excellent for contrasting with bronze varieties. Height 28 inches. **\$1.30 per doz., \$10 per 100.**

Bronze Queen. Soft golden bronze; large flower of sturdy habit. A very exquisite color when forced and splendid for the border. Height 28 inches. **70 cts. per doz., \$5 per 100, \$48 per 1,000.**

Cardinal Manning. A splendid shade of rosy violet, with a slight edge of bronze. Large-sized flower of fine form. Height 28 inches. **70 cts. per doz., \$5 per 100, \$48 per 1,000.**

Cherbourg. This is, undoubtedly, one of the finest Breeder Tulips ever introduced. We are able to offer only a limited quantity of it. Its color is best described as a deep tone of golden yellow, with a suffusion of terra-cotta, the deeper tone of yellow growing stronger toward the edges of the petals. The flower is much admired on account of its gigantic size and beautiful color. Height 32 inches. **\$2.50 each, \$25 per doz., \$200 per 100.**

Copernicus. Dark coppery bronze, flushed old-rose; interior warm brown with yellow base. An attractive, large flower, borne on strong stems. Height 28 inches. **90 cts. per doz., \$7 per 100.**

Coridion. Clear yellow, with a faint suffusion of lilac; a flower of very dainty color. Fine for shrubby borders. Height 24 inches. **\$2 per doz., \$15 per 100.**

Dom Pedro. Coffee-brown, shaded maroon, inside rich mahogany; large flower; very fragrant. Height 21 inches. **\$1.30 per doz., \$10 per 100, \$98 per 1,000.**

Dryad. Lilac-old-rose, margined bronzy yellow, shading to buff with age; broader margin inside with bright apple-green base. Height 22 inches. **\$2 per doz., \$15 per 100.**

Fairy. Reddish mahogany, with bronze shading; an extra-large flower of artistic character. Splendid in borders or for late forcing. Height 24 inches. **70c. per doz., \$5 per 100, \$48 per 1,000.**

Garibaldi. One of the finest Breeders as yet introduced. Pale lilac-bronze, with a broad primrose-yellow margin. A long and graceful flower. Height 31 inches. **\$9 per doz., \$70 per 100.**

Godet Parfait. Dark blue-purple, with white base and blue halo; very large flower of striking color. Height 30 inches. **\$1 per doz., \$8 per 100.**

Golden Bronze. Light brownish yellow, with flush of heliotrope; inside rich mahogany-brown, rich yellow base. A large, well-formed flower of attractive appearance. Height 26 inches. **90 cts. per doz., \$7 per 100, \$68 per 1,000.**

Goldfinch. Elegantly formed, large, pointed flower. Rich golden chestnut, inside deep mahogany-brown, yellow base. Height 30 inches. **\$2 per doz., \$15 per 100.**

Heloise. A beautiful shade of dark brown, shaded old-rose; yellow base, marked olive-green. Large-sized flower of wonderful color and very prettily reflexed petals. Height 28 inches. **\$2 per doz., \$15 per 100.**

Ilias. While this variety is classed as a Breeder Tulip, it is really the result of crossing a Darwin with a Breeder Tulip. The exquisitely formed flowers are carried on tall, straight, strong stems. They open purple but soon change to a deep lavender, surpassing any other variety in this shade. Height 30 inches. **\$2 per doz., \$15 per 100.**

Dutch Breeder Tulips (May-Flowering), continued

Indian Chief. Reddish mahogany flushed purple, edged warm brown with age; yellow base. A huge flower of wonderful substance and most artistic shape, carried on a very tall stem. Height 33 inches. \$1 each, \$10 per doz., \$75 per 100.

Jaune d'Oeuf. Ruddy apricot, inside soft yellow, with black base and anthers; very striking variety. Height 21 inches. 80 cts. per doz., \$6 per 100, \$58 per 1,000.

James Watt. A new Breeder of exquisite form and coloring. Deep slaty violet, flushed bronze; inside dark mahogany, shaded brown; fine green base starred white. Height 26 inches. \$2 per doz., \$15 per 100.

La Turquoise. An excellent Breeder when grown indoors. Bright brick-red, with broad edge of deep yellow. Large flowers on strong stems of great substance. Height 28 inches. \$1.30 per doz., \$10 per 100.

Le Miroir. An even tone of brilliant violet-blue; large white base margined blue. A very attractive flower and a distinct shade in the Breeders. Height 29 inches. \$1.30 per doz., \$10 per 100, \$98 per 1,000.

Louis XIV. An even tone of dark purple, with a broad margin of golden bronze; a very large flower of wonderful substance; green-black base starred yellow. A very fine variety and one that instantly meets with favor when grown. Height 30 inches. \$1 per doz., \$8 per 100, \$78 per 1,000.

Lucifer. Clear orange, with a rosy flush and olive base, with yellow star; very large flower on a tall stem. A gorgeous color which glows like a fire. Height 24 inches. \$2 per doz., \$15 per 100.

Marechal Victor. Pale lavender-violet, with broad edge of buff shaded bronze; inside violet, faintly flushed mahogany with beautiful green base—a wonderful color combination which we have seen in no other Tulip. A large flower of open, graceful form. Tall and holds the bloom well poised. Height 28 inches. \$8 per doz., \$60 per 100.

Marginata. An attractive variety on account of its effective color—an even tone of apricot-orange, with a distinct yellow border. Height 28 inches. \$1 per doz., \$8 per 100, \$78 per 1,000.

Marie Louise. Old-rose, flushed orange-salmon, with purplish bloom and olive base. A very beautiful Tulip for border planting and one of the most richly colored. Height 23 inches. 80 cts. per doz., \$6 per 100, \$58 per 1,000.

Mrs. Beecher Stowe. Large flower of fine form on strong stem. One of the finest deep purple varieties with a velvety bloom on the outer petals. Very effective on account of its large size and strong color. Height 30 inches. \$5 per doz., \$40 per 100

Newton. Dark purple, with plum bloom on outer petals. A flower of the same tone as Darwin Jubilee, but not so large. One of the tallest Tulips. Height 35 inches. 90 cts. each, \$9 per doz., \$70 per 100.

Old Times. Dull garnet, edged primrose-yellow, with greenish base; rather long flower of somewhat pointed form. A showy Breeder of English origin. Height 24 inches. \$1 per doz., \$8 per 100, \$78 per 1,000.

Pink Pearl. A new Breeder and quite the finest of its color. The outside of the flower is a lilac-pink, inside rose, beautiful white base. A magnificent, large, egg-shaped flower. Height 26 inches. \$3.50 per doz., \$25 per 100.

Plutarchus. Bronzy yellow, with a flush of heliotrope in the center of the petals; a flower of wonderful substance and splendid form. Height 26 inches. 90 cts. per doz., \$7 per 100, \$68 per 1,000.

Prince of Orange. Dark terra-cotta-brown, shaded yellow, with a yellow base starred black. Splendid for the border and good for forcing. Height 24 inches. \$1 per doz., \$8 per 100, \$78 per 1,000.

Prince Albert. Golden brown, with purple flush through center of petals, which disappears as the flower ages. Height 32 inches. \$1 per doz., \$8 per 100, \$78 per 1,000.

Queen Alexandra. Canary-yellow, broadly flushed lilac-brown at the edges of the petals. A distinct variety for outdoors or forcing. Height 23 inches. 70 cts. per doz., \$5 per 100, \$48 per 1,000.

Roi Soleil. This new Breeder Tulip is a combination of shades—rich dark violet, flamed with bronze. A large flower borne on strong stems. Height 28 inches. \$1.60 per doz., \$12 per 100.

Salomon. Silvery lilac, flushed buff when opening, inside slightly deeper tone, with large, white base; very long, loosely formed flower, carried on a graceful stem. Height 30 inches. \$1 per doz., \$8 per 100, \$78 per 1,000.

Socrates. Deep rosy violet, with dull blue base; large flower of stately habit, often having an extra number of petals. Height 28 inches. 80 cts. per doz., \$6 per 100, \$58 per 1,000.

St. James. Dark rosy lilac, edged bronzy tan, with coppery rose flush at tips of petals; inside ruddy mahogany, edged golden brown with yellow and green base. A large flower on tall stem. Height 28 inches. 80c. per doz., \$6 per 100, \$58 per 1,000.

Turenne. Purplish brown, with a broad margin of soft yellow, very large flower and on account of its unique coloring very attractive for group planting. Height 28 inches. \$1 per doz., \$8 per 100, \$78 per 1,000.

Velvet King. Deep, glossy purple-maroon, with a white base; a flower of gigantic size, lasting a long time in bloom. A magnificent Tulip for the border or shrubbery and forms an effective contrast when planted with the light-colored Tulips. Height 28 inches. \$1 per doz., \$8 per 100, \$78 per 1,000.

Vulcain. Reddish apricot, with a broad margin of bright buff-yellow, inside dark apricot, edged yellow, with dark green base starred yellow. A beautifully shaped flower and in color unlike any other Tulip. Height 25 inches. \$1 per doz., \$8 per 100.

Dutch Breeder Mixture.

A choice mixture of many varieties of this type of Tulip. Magnificent combinations of colors and shades from beautifully flushed white to deep wine-red, art bronze and darkest maroon. 75c. per doz., \$5 per 100, \$45 per 1,000.

Plant
a
Few
Dutch
Breeder
Tulips
This
Year



COTTAGE AND HYBRID TULIPS

MAY-FLOWERING

The Cottage Tulips, like the Darwins, flower late. Many of the varieties are used extensively for late bedding and are magnificent for this purpose. The pale primrose, deep yellow, and splendid white varieties are often planted with the Darwins for effects of contrast. The following list we feel sure contains most of the best varieties. Certain varieties, like some of the Darwins, will flower a few days earlier than others, but on the whole the earliest is just at its best when the latest-flowering variety is just beginning to show bloom. We have included many of the finest of the new late-flowering Hybrid Tulips. They are the results of crossing the Darwin with Cottage Tulips, and bloom at the same time as the other May-flowering varieties.

Argo. A very beautiful new hybrid variety on account of its distinct and lovely color. The flowers are round, borne on strong stems, golden yellow, mottled red and passing off to a reddish brown. Delicate bronze-salmon when grown indoors. Height 22 inches. **\$2 per doz., \$12 per 100.**



Cottage Tulips, Barbara Pratt

Alcmene. A Hybrid Tulip with Darwin-shaped petals. This new variety is of great beauty, best described as a rich, glowing rose, with creamy white base, having a pale blue border. Height 25 inches. **\$1.30 per doz., \$10 per 100, \$98 per 1,000.**

Ambrosia. This beautiful new variety of Hybrid Tulip contains a combination of shades—bronze with rosy lilac glow; inside of the large, well-shaped flower is a salmon-orange tone. Height 28 inches. **\$2.50 per doz., \$20 per 100.**

Arethusa. The large, urn-shaped flower is of true Cottage form, of a light shade of chrome-yellow. A new variety greatly admired on account of its size, lovely form, and fine, erect stem. Height 25 inches. **\$5 per doz., \$35 per 100.**

Avis Kennicott. A rich, deep shade of yellow, with a striking black base and anthers. One of the best of the newer varieties. Height 25 inches. **\$1.20 per doz., \$9 per 100, \$88 per 1,000.**

Barbara Pratt. Rich light cochineal-carmine, edges lilac-rose, with narrow green edge; anthers yellow. A very beautiful Tulip with slightly reflexed petals. Highly recommended for exhibition. In a test of over one hundred varieties of New and Rare Tulips in the writer's garden last spring, this variety was very frequently commented on. We consider it one of the finest Tulips of recent introduction. Height 36 inches. **\$1.25 each, \$12.50 per doz., \$95 per 100.**

Beauty of Bath. Soft rosy lilac, bordered bright canary-yellow. A Tulip of unusual coloring. While not a new variety, its coloring makes an instant appeal. Large, oval flower on fine, strong stem. Height 23 inches. **\$1.30 per doz., \$10 per 100.**

Bouton d'Or. While not a new variety, stocks of better quality are now obtainable. Cup-shaped Tulip of medium size, but of a fine deep golden yellow, with black anthers. Height 20 inches. **70 cts. per doz., \$5 per 100, \$48 per 1,000.**

Carrara. This Tulip, when first exhibited, in 1921, was considered the finest new white variety. Blooms broadly cup-shaped, with rounded petals that all come to the same level when the flower is half open. Height 26 inches. **\$2.50 per doz., \$20 per 100.**

Dido. A large, well-formed flower of rich orange-rose tone, with margin of bright orange-yellow. Inside bright orange with yellow base. Height 30 inches. **\$3.50 per doz., \$25 per 100.**

Fairy Queen. Beautiful soft rosy lilac, outer petals broadly margined amber-yellow. A variety that should be included in every collection on account of its unique color. Height 20 inches. **70c. per doz., \$5 per 100, \$48 per 1,000.**

Flava. Canary-yellow, large, exquisitely formed flower with magnificent lasting qualities. Height 25 in. **\$3.50 per doz., \$25 per 100.**

Gesneriana lutea. One of the best of the well-known Gesneriana family. A bedder of unsurpassed qualities, with perfect-shaped flowers of purest golden yellow, on strong stems holding the flowers perfectly erect. Height 24 inches. **70 cts. per doz., \$5 per 100, \$48 per 1,000.**

Gesneriana spathulata or major. The beautiful flowers are brilliant scarlet, with a bluish black center, on tall stems. Height 18 inches. **70 cts. per doz., \$5 per 100, \$48 per 1,000.**

Grenadier. Brilliant orange-red. A new Tulip of great beauty. Flowers long, borne on very graceful stems. Height, 24 inches. **\$1 per doz., \$8 per 100, \$78 per 1,000.**

Hammer Hales. Golden brown, flushed old-rose; inside bright apricot, edged bronze-yellow, with a yellow base. Height 24 inches. **80c. per doz., \$6 per 100, \$58 per 1,000.**

Inglescombe Pink (Salmon Queen). Beautiful soft rosy pink, slightly flushed salmon; large, globular flower of excellent form. Adapted for borders or late forcing. Height 22 inches. **60 cts. per doz., \$4.50 per 100, \$42 per 1,000.**

Cottage and Hybrid Tulips (May-Flowering), continued

Inglescombe Yellow. A beautiful variety. Size, form and height greatly resemble the Darwins, so much so that it is frequently called the "Yellow Darwin," a fitting title. Height 22 inches. **70c. per doz., \$5 per 100, \$48 per 1,000.**

John Ruskin. Salmon-rose, edged soft lemon-yellow, inside deep rosy lilac—a beautiful combination of colors; large flower of fine shape on a graceful stem. Height 16 inches. **70 cts. per doz., \$5 per 100, \$48 per 1,000.**

La Merveille. Very large, sweet-scented flowers, salmon-rose, overlaid with orange-red. A grand border variety. Height 20 inches. **70 cts. per doz., \$5 per 100, \$48 per 1,000.**

Leda. A very lovely variety, best described as rosy red outside, peach-blossom inside, with splendid light blue and white base. The flowers are large, of excellent form, and are borne on strong stems, held well erect for the size of the flower. Height 25 inches. **\$7.50 per doz., \$60 per 100.**

Lord Carnarvon. A flower with a well-defined margin of clear pink along its fine, well-shaped petals. A true long urn-shaped flower that is instantly admired. Splendid for exhibition. Height 24 inches. **\$2 per doz., \$15 per 100.**

Miss Willmott. A pale primrose-yellow of true Cottage form. In good demand on account of its delicate color. Height 18 inches. **85 cts. per doz., \$6 per 100, \$58 per 1,000.**

Monsieur Mottet. (Bunch-flowered.) White, faintly flushed shell-pink as the flower ages. Round bloom with rather pointed petals. This very interesting Tulip is of branching habit, giving six or more flowers from a single stem. Height 24 inches. **\$1.20 per doz., \$9 per 100, \$88 per 1,000.**

Mongolia. There have been a great many Seedling Tulips introduced recently, both in light and dark yellow shades, but we think that this is one of the finest and largest in the deep yellow class. The flowers are egg-shaped, of great substance, and are carried on tall, strong stem. Height 32 inches. **\$3.25 each, \$36 per doz.**

Moorlight. Bright canary-yellow; splendid, large flower, oval in shape, outer petals slightly reflexed at the tips. An excellent yellow for combination with the Darwin varieties. Height 22 inches. **80 cts. per doz., \$6 per 100, \$58 per 1,000.**

Mrs. Kerrell. Beautiful light rose with a delicate amber tinge, center white, bordered electric blue. A new variety of very refined coloring and shape and destined to win a place for itself among discriminating flower-lovers. Height 18 inches. **\$1 per doz., \$8 per 100, \$78 per 1,000.**

Mrs. Moon (*Fulgens lutea maxima*). Deep golden yellow; large flowers of good substance, slightly reflexing. Height 24 inches. **\$1 per doz., \$8 per 100, \$78 per 1,000.**

Mrs. Harold Irving Pratt. A Tulip of large size, with well-rounded cup and outer petals slightly reflexing. The color can best be described as a combination of rose and amber, with margin of saffron yellow at the edge of the petals—a rare combination which is greatly enhanced by the black anthers. Height 30 inches. **\$5 each, \$55 per doz.**

Natalie May. Sulphur-white, with some hardly noticeable crimson spots; base white; anthers black. Very tall and graceful. A fine exhibition Tulip. Height 32 inches. **\$4 per doz., \$30 per 100.**

Orange King. Beautiful deep orange, shaded rose, inside deep orange-scarlet with a yellow center. Height 23 inches. **70 cts. per doz., \$5 per 100, \$48 per 1,000.**

Orient. Rich, glowing, warm pink, slightly touched with amber at the edges of the petals, which frequently measure 6 inches in length, making a slender flower, with slightly reflexing petals. A splendid Tulip for exhibition. Height 30 inches. **40 cts. each, \$4 per doz., \$30 per 100.**

Pride of Inglescombe. White, broadly edged deep crimson-rose; white base, shaded blue. A long and excellently shaped flower, somewhat like Picotee but brighter in color. Very attractive when planted in masses. Height 25 inches. **\$1.30 per doz., \$10 per 100.**

Quaintness. Old-gold, flushed deep rose; inside old-gold, shaded mahogany. Immense flower with very long petals. Height 24 inches. **\$2.50 per doz., \$20 per 100.**

Rosabella. This beautiful novelty—the finest introduction in Cottage Tulips of recent years—is, perhaps, best described as a beautiful shade of salmon-rose. Height 21 inches. **\$2.50 per doz., \$20 per 100.**

Scarlet Emperor. Where a glowing shade of scarlet is desired, this is one of the finest of its color. Height 22 inches. **\$1.20 per doz., \$9 per 100, \$88 per 1,000.**

Sir Harry. Pale lavender-pink of an unusual tone. Large flower of pointed shape, quite broad at the base. A fine variety for exhibition or pots. Height 26 inches. **\$1 per doz., \$8 per 100, \$78 per 1,000.**

Striped Beauty. Silvery rose, blotched and striped dark carmine and white. Large, bold flowers on a graceful stem. Excellent for pot-culture. Height 18 inches. **\$1.30 per doz., \$10 per 100, \$98 per 1,000.**

The Fawn. The coloring is a unique shade of pale rosy fawn, changing to blush-rose. Height 20 inches. **70 cts. per doz., \$5 per 100, \$48 per 1,000.**

Themis. A lovely hybrid Tulip, the result of crossing a Darwin and Cottage Tulip. It is of characteristic Darwin shape, with somewhat reflexing petals, and a beautiful pure white throughout, with fine strong stem. This and Carrara are two of the finest white hybrid Tulips. Height 28 inches. **\$2.50 per doz., \$20 per 100.**

The Lizard. Deep blood-red, with purple bloom, striped and feathered yellow and white. A Tulip of most unusual markings. Height 24 inches. **\$1 per doz., \$8 per 100, \$78 per 1,000.**

Vitellina. Pale yellow, becoming creamy white as the flower ages; large flower of great substance and beauty; sweet-scented. Excellent forcer. Height 20 inches. **\$1 per doz., \$8 per 100, \$78 per 1,000.**

Walter T. Ware. Deep golden yellow, the deepest and richest color among Late Tulips; broad, globular flowers reflexing at the top. Height 18 inches. **\$1.60 per doz., \$12 per 100.**

Zommerschoon. One of the oldest of Cottage Tulips—a combination of ivory and carmine. Height 20 inches. **\$10 per doz., \$75 per 100.**

Superb Mixture. A select assortment, covering almost every conceivable color and shade. Those who have not grown these Tulips, and desire a mixture for trial purposes, can depend on getting every color that obtains in this beautiful class of Tulips. **60 cts. per doz., \$5 per 100, \$45 per 1,000.**



Cottage Tulip, Miss Willmott



Botanical Tulip, Greigi

LILY-FLOWERING TULIPS

This type of Tulip, which is now becoming popular in American gardens, is the result of crossing the urn-shaped Tulip, *Retroflexa* with one of the pink Darwins. The varieties, some of which we have previously listed among our Cottage and Hybrid Tulips, are very decorative, and the flowers are urn-shaped with long, recurving petals, giving them a lily-like shape. They bloom at the same time as the Darwin, Breeder, and Cottage Tulips.

ALASKA. One of the finest of the new Hybrid Tulips. The flowers are long, the outer petals slightly reflexed and of an even tone of pure yellow. Height 28 inches. **\$5 per doz., \$40 per 100.**

ARTEMIS. Best described as a deep clear rose-pink, similar in type to *Retroflexa*, except its color. A splendid Tulip for the herbaceous border. Height 30 inches. **\$1 per doz., \$7.50 per 100, \$72 per 1,000.**

ELEGANS ALBA. Creamy white, with maroon margin of carmine-rose. Large flower, with reflexing petals, similar to *Picotee*, except that the color does not spread as the flower ages. A dainty variety for planting in beds with ground-cover of forget-me-nots. Height 20 inches. **\$1.60 per doz., \$12 per 100.**

PICOTEE (Maiden's Blush). White, margined deep rose, the color suffusing the whole flower as it ages; medium-sized flower, reflexing. A grand Tulip for the border. The sight of a large bed planted wholly to this variety is one that will not easily be forgotten. Height 20 inches. **70 cts. per doz., \$5 per 100, \$48 per 1,000.**

RETROFLEXA SUPERBA. Light yellow, very decorative, urn-shaped Tulip, with long, recurving petals, giving a distinct lily-like effect. Height 18 inches. **\$1.20 per doz., \$9 per 100, \$88 per 1,000.**

SIRENE. This beautiful lily-flowering Tulip is not only a lovely variety on account of its color, but because of the exquisite urn-like shape of the flower. A rich cerise-pink, white base. Splendid for exhibition. Height 26 inches. **80 cts. per doz., \$6 per 100.**

YELLOW PICOTEE. Beautiful canary-yellow, margined deep rose. A yellow counterpart to the well-known variety *Picotee*. A showy bedder. Height 20 inches. **80 cts. per doz., \$6 per 100, \$58 per 1,000.**

BOTANICAL TULIPS AND SPECIES

ACUMINATA (Cornuta; Stenopetala). This variety has very narrow petals, ending in a threadlike point at the top. The color is yellow, streaked red, very showy and attractive. Height 18 inches. **\$3.50 per doz., \$25 per 100.**

CLUSIANA. The "Little Lady" Tulip. A lovely little variety which originated in Asia Minor. Grows about 8 inches high, flowers as large as a crocus. Outer petals cherry-red, inner petals white with violet base. Should be planted 8 to 9 inches deep in light soils in a sheltered place. Excellent bulb for the rock-garden. **\$1 per doz., \$8 per 100, \$78 per 1,000.**

EICHLERI. This splendid Tulip from Turkestan produces large crimson-scarlet flowers with a glistening black center marked with gold. Height 12 inches. **\$2 per doz., \$15 per 100.**

FLORENTINA ODORATA. Fragrant, rich yellow flowers, frequently two to a stem, with bronze interior, carried on slender stems. An interesting species. Height 18 inches. **\$1.30 per doz., \$10 per 100, \$98 per 1,000.**

GREIGI. Flowers very large, brilliant orange-scarlet, with yellow and black center. The curious feature of this Tulip is that the foliage is of a very distinct character, being spotted maroon. Blooms late in April or early in May. Height 10 inches. **\$3.50 per doz., \$25 per 100.**

HAGERI. A very fine brownish red species with a dark center at the base of the flower. Height 10 inches. **\$3.50 per doz., \$25 per 100.**

KAUFMANNIANA. One of the earliest of all the Tulips to come in flower. Creamy white, tinged rosy red, the markings varying. The flowers are very attractive, large in size, with petals reflexing. Blooms early in April. **\$3.50 per doz., \$25 per 100.**

KUSHKENSIS (The Cotton Tulip). This very fine novelty was imported from Turkestan. It has large, brilliant scarlet flowers, having black base with yellow edge. The bulbs produce an enormous amount of cotton and are very unique. Height 8 inches. **\$5 per doz. \$40 per 100.**

MARJOLETTI. Pale yellow, mottled toward the outer petals with scarlet. A lovely species, which blooms outdoors during late April. Height 14 inches. **\$1 per doz., \$8 per 100, \$78 per 1,000.**

MICHELIANA. Bright, deep scarlet flower, base black with small yellow blotches. Foliage striped brown, not spotted as in *Tulipa Greigi*. Height 8 inches. **\$2 per doz., \$15 per 100.**

PRÆCOX. When in bud this variety looks rather dull, but when open the color is dazzling scarlet. Very sturdy grower about 14 inches tall. A native of southern Europe. **\$4 per doz., \$30 per 100.**

PRÆSTANS TUBERGENI. Orange-red flowers early in April. When fully open, they are a pretty scarlet and measure 6 inches across. The stems and leaves are covered with soft white hairs. Produces as many as six, and even eight, flowers to a stem. Height 14 inches. **\$9 per doz., \$70 per 100.**



Lily-flowering Tulip, Sirene

Striped and Feathered May-Flowering Tulips



Rose Bybloem Tulip, Athalia

BYBLOEM AND BIZARRE TULIPS

Bybloem and Bizarre Tulips are "rectified" Breeder types. The Tulips are of an old race which has been grown in Holland and in France since the beginning of the seventeenth century, and which caused the famous Tulip craze in 1635. The Bybloems are queerly striped and feathered rose or violet on a white ground. The Bizarres have dark brown stripes and feathering on a yellow ground. The varieties offered are the newer sorts, and the flowers are larger than the older and smaller-flowering sorts. They flower about the same time as the Breeder and Darwin Tulips but do not grow quite so tall, and are seen at best advantage when planted in clumps in the herbaceous border or among evergreens and shrubs. The stems average from 18 to 23 inches in height.

- ADMIRAL KINGSBERGEN.** (Rose Bybloem.) Bright crimson, feathered and flamed with white; large flower, borne on a stiff stem. **\$2 per doz., \$15 per 100.**
- ATHALIA.** (Rose Bybloem.) White, bordered and feathered bright rose. **\$1.30 per doz., \$10 per 100.**
- BLACK BOY.** (Bizarre.) Yellow ground, feathered and flamed dark brown. **90 cts. per doz., \$7 per 100.**
- EMPEREUR DE MAROC.** (Bizarre.) Bright yellow ground, feathered and flamed dark red. **\$1 per doz., \$8 per 100.**
- GLORY OF HOLLAND.** (Violet Bybloem.) Pure white, feathered and flamed violet-purple. **\$1.60 per doz., \$12 per 100.**
- LADY STANLEY.** (Violet Bybloem.) White, feathered and striped dark violet. **\$1 per doz., \$8 per 100.**
- VIDIUS.** (Bizarre.) Reddish brown ground, feathered yellow; very attractive variety. **\$1 per doz., \$8 per 100.**
- PRINS MAURITZ.** Yellow ground, variegated dark brown. **\$1 per doz., \$8 per 100.**
- REINE DE HOLLANDE.** (Rose Bybloem.) White, feathered and flamed red; a very attractive and distinctly variegated Tulip. **\$1 per doz., \$8 per 100.**
- ROMEO.** (Bizarre.) Bright yellow, feathered and bordered with orange-red; a very striking variety of large size. **\$1 per doz., \$8 per 100.**
- VONDEL.** (Violet Bybloem.) White ground, striped dark violet and feathered light violet. **\$2 per doz., \$15 per 100.**
- ROSE BYBLOEM TULIPS, MIXED.** 90 cts. per doz., \$7 per 100.
- VIOLET BYBLOEM TULIPS, MIXED.** 90 cts. per doz., \$7 per 100.
- BIZARRE TULIPS, MIXED.** An excellent mixture of choice named sorts. **90 cts. per doz., \$7 per 100.**

REMBRANDT TULIPS

Rembrandt Tulips are in reality "broken" forms of Darwin Tulips. Each year many of our best varieties of Darwin Tulips show a tendency to break, or become variegated. These Tulips, on account of their odd colorings and variegations, were very popular at one time, and while the modern tendency to favor self-colors is recognized generally throughout all countries, these broken forms are sometimes preferred and possess splendid decorative value. The stems average from 18 to 22 in. in height.

- APOLLO.** Lilac-rose and white, striped dark carmine. **\$1 per doz., \$8 per 100.**
- CARACALLA.** White, striped and feathered carmine-red; a very attractive variety. **\$1 per doz., \$8 per 100.**
- EROS.** Soft lilac, feathered dark violet; not a large but an exquisite flower. **\$1 per doz., \$8 per 100.**
- JULIENNE.** Rose, striped and feathered carmine-purple and white. Edges of petals broadly blotched white makes splendid contrast with the rich color of the flower. **\$1.20 per doz., \$9 per 100.**
- LA COQUETTE.** Violet, flamed purple and white; not a large but an exquisite flower. **\$1 per doz., \$8 per 100.**
- MARCO SPADO.** White, flamed bright carmine-red; large flower. **\$1.30 per doz., \$10 per 100.**
- SEMELE.** White, heavily striped and feathered vivid rosy pink. A Tulip of exquisite coloring; large flower. **\$1 per doz., \$8 per 100.**
- VICTOR HUGO.** Brilliant carmine, feathered white. **\$1 per doz., \$8 per 100.**
- REMBRANDT TULIPS, CHOICE MIXED VARIETIES.** 90 cts. per doz., \$7 per 100.

PARROT TULIPS Three-Year-Old Flowering Bulbs

Fantasy. A glorious Parrot Tulip with a straight, strong stem. It is a sport from the Darwin Tulip, Clara Butt, with exactly the same beautiful true pink color but the quaintly artistic shape of a Parrot Tulip. Several pans of this exhibited in our display at the New York Flower Show this spring created a sensation. **\$1.50 each, \$15 per doz., \$120 per 100.**

- | | |
|--|--|
| <p>Amiral de Constantinople. Large, red flowers, tipped with orange.</p> <p>Cramoisi Brilliant. Deep carmine; very handsome.</p> | <p>Lutea major. Large; bright yellow, with crimson and green stripes.</p> <p>Perfecta. Yellow and red, striped.</p> <p>Mixed Parrot Tulips.</p> |
|--|--|

Price, any of the above (except Fantasy), 80 cts. per doz., \$6 per 100



Parrot Tulips

SINGLE EARLY TULIPS

FOR APRIL-BLOOMING OUTDOORS, POTS AND FORCING

Few, if any, of the spring-blooming flowers rival the Tulip for brilliancy of bloom or ease of culture. For formal beds on the lawn or garden borders they are excellent subjects. They do not possess the same size of bloom and length of stem of the May-flowering Darwin, Breeder and Cottage varieties, but where early blooms are desired they are frequently used. Many of the varieties may be forced in bloom in January, while all the varieties may be easily had in flower in pots late in February or early March.

Culture.—For indoor blooming they require the same cultural treatment as Hyacinths.

Outdoor Culture.—Bulbs may be planted with good assurance of success even in early December, if the ground is open. They should be planted not more than 5 inches apart, covering the bulbs about 4 inches over the top. After the first sharp frost which forms a light crust on the surface of the soil, old leaves or litter should be spread about 6 inches thick over beds or borders to prevent frost from going deeper. Do not cover bulbs, if planted early, until the first sharp frost, as field-mice frequently nest among leaves and destroy bulbs, which is impossible if the covering is placed after the first hard frost.

Note.—The letters A, B and C, following the varieties indicate their relative earliness of bloom; but, with few exceptions, most of the varieties, however, bloom outdoors about the same time when planted in masses. The figures indicate the height in inches.

The following list contains the best novelties extant, as well as a complete list of the best standard varieties. We have discarded quite a number of varieties which no longer grow well.

BEST STANDARD AND NEW AND RARE VARIETIES

Belle Alliance. B 11. Brilliant scarlet, Doz. 100 1,000
yellow base; large
flower. An excellent variety for early forcing
and does very well for bedding also... \$0 80 \$6 00 \$58 00

Brilliant Star. A 12. Bright vermilion-Doz. 100 1,000
ion-scarlet, same color
as Vermilion Brilliant, but larger and of
great substance. Splendid early forer,
flowering easily for Christmas... \$0 90 \$7 00 \$68 00

Cerise Gris-de-Lin. C 11. Dark carmine-violet, shaded fawn and margined creamy white, with yellow base; large flowers of globular form. A novel bedding variety, but must be planted alone; excellent for March forcing... 80 6 00 58 00

Couleur Cardinal. C 12. A bright crimson-scarlet, with a deeper tone or bloom on the outer petals. A bed planted wholly to this variety is a grand sight. Grand for midseason forcing. 90 7 00 68 00

Cramoisi Brillant. C 13. Glowing scarlet, with yellow base; long, narrow flowers of perfect form. 70 5 00 48 00

Cramoisi Royal. B 14. A large flower of a bright carmine-rose, borne on strong stems. A lovely satiny rose color when grown in pots. 1 30 10 00 98 00

De Wet. B 16. Golden yellow, flushed deep orange; large, sweet-scented flower of erect habit. Quite different in color from any other variety. 2 00 15 00

Diadem. A 16. A very beautiful new variety when forced early, being an even tone of pearly pink. Excellent for pots or cutting. 6 00 50 00

Flamingo. B 12. Carmine-rose, shaded lighter. The petals are striped white and very crinkled, giving the flower a decidedly artistic appearance. A very popular variety among florists for forcing on account of its odd color and habit. 80 6 00 58 00

Fortuna. A 14. Perhaps best described as a satiny lilac-rose—a very beautiful color without the slightest trace of magenta. Splendid for early forcing. 5 00 40 00

Fred Moore. B 12. An improved form of Thomas Moore. Deep, ruddy apricot, shading at the edges of the petals to dull orange-yellow, center marked olive-green; medium-sized flower; sweet-scented. A lovely color when forced. 80 6 00 58 00

Golden Queen. B 13. Golden yellow; large flower of extra-fine form. Excels all existing yellows for substance, and excellent for early forcing. 1 20 9 00 88 00

Ibis. B 14. Quite the finest novelty offered by us this year. A brilliant dark pink color when grown indoors. A grand exhibition variety. 1 00 8 00 78 00

King of the Yellows. A 14. Deep golden yellow; the flowers are egg-shaped, very substantial and carried on a tall stem, which makes them excellent for cutting. One of the earliest yellows which should be much more used for early forcing. 1 00 8 00 78 00



A border of Single Early Tulips

Single Early Tulips, continued

Keizerkroon. A 15. Bright crimson-scarlet, edged clear, rich yellow; excellent, large flower on long stem. Fine bedder; splendid for forcing.....	Doz. 100	1,000	\$1 30	\$10 00	\$98 00
Lady Boreel (Joost Van Vondel White). B 13. Snowy white; large, long flower of splendid shape. The finest white for bedding, and superb for pots or pans. Cannot be forced so early as Pelican or White Hawk.....	90	7 00	68 00		
Lady Moore. B 12. This is a much improved Fred Moore. The color is red, shaded terra-cotta. A variety of considerable substance.....	I 60	12 00			
La Reine Maximus. B 12. White, flushed faintly with pink. Used largely by florists for early forcing and a very lovely variety.....	80	6 00	58 00		
La Remarquable. C 13. Brilliant claret-purple, edged and tipped old-rose. A very large flower of elegant reflexing shape and a rather odd color among Early Tulips. Good for bedding or late forcing.....	90	7 00	68 00		
Le Reve (Hobbema; Sarah Bernhardt). C 14. This variety caused considerable favorable comment in our exhibit of bulbs at the New York Flower Show this spring. The color is old-rose, flushed buff; a very large, globular flower with rounded petals and carried on a strong stem. Excellent for late bedding.....	I 00	8 00	78 00		
Max Havelaar. Very close in color to watermelon-red; rather large, well-formed flowers.....	I 00	8 00	78 00		
Mon Tresor. A 12. Golden yellow; the flowers are large and of a pure color. Mostly used for growing in pots or pans, for which purpose it is best.....	I 20	9 00	88 00		
Moonbeam. B 14. Deep primrose-yellow, shading to soft canary at the edges; very large flower of graceful form. An improved form of Primrose Queen.....	I 30	10 00	98 00		
Pelican. A 14. A splendid new, pure white variety, and of wonderfully large size. Excellent for exhibition; sport of the variety White Hawk.....	80	6 00	58 00		
Pink Beauty. C 12. Bright cherry-rose, center of petals striped white. It has no equal as a bedder, for the stem is strong and the white center of the big, fleshy petals shows up very conspicuously against the broad, vivid rose edges. Does well in pans, but not before March.....	I 60	12 00			
Pink Perfection. A 14. This is considered the finest uniform shell-pink Early Tulip which has come to our attention in recent years. A splendid exhibition variety that will be more extensively grown when better known. \$1 each.....	I 00	80 00			
President Lincoln. B 12. Large flower of clear magenta-violet, slightly paler in tone when grown indoors. A variety that looks well when bedded out with a pale yellow variety....	90	7 00	68 00		
Prince of Austria. B 14. Brilliant orange-scarlet, with a clear yellow base. The flower is large and of a very attractive shade when forced. A splendid bedding variety as well..	70	5 00	48 00		
Proserpine. A 14. Rosy carmine, with a white center marked slate-blue; a very large globular flower. One of the easiest and earliest forcing Tulips; very sweetly scented.....	I 30	10 00	98 00		
Queen of Orange. B 17. This new variety is considered to be an improvement on the very popular De Wet. It has the same glorious orange color but the flower is somewhat longer.....	2 00	15 00			



Le Reve Tulips

Rising Sun. B 15. A new variety used for exhibition on account of its pure yellow color, and wonderful size and substance. The finest golden yellow Early Tulip introduced to date.....	Doz. 100	1,000	\$1 30	\$10 00	\$98 00
Rose Gris de Lin. B 12. Vivid rose. One of the most popular Tulips, and the best pink for forcing or outdoor planting among the cheaper varieties.....	70	5 00	48 00		
Rose Luisante. C 10. Brilliant, deep rose-pink; large flower. Splendid for bedding or pots.....	90	7 00	68 00		
Van Der Neer. B 12. Deep dark purple; a flower of a most brilliant tone and splendid shape.....	I 20	9 00	88 00		
Vermilion Brilliant. A 12. Bright, glistening scarlet, with a yellow base; very large flower of perfect shape. Splendid for early forcing...	I 00	8 00	78 00		
White Beauty. C 13. A very lovely sport from Pink Beauty, with large, white flowers of beautiful, globular form and great substance. Splendid for forcing and excellent for outside bedding when used with Pink Beauty.....	I 30	10 00	98 00		
White Hawk. B 12. Lovely pure white, very large, globe-shaped, of great substance. A very early forcer...	80	6 00	58 00		
Yellow Prince. B 12. Clear golden yellow. A large flower used by florists for early forcing or bedding.....	90	7 00	68 00		

S. & W. Co.'s Special Mixture. A mixture consisting of 25 named varieties, blended so as to give an assortment of all possible colors and shades, all of vigorous habit and large size, uniform height and time of blooming. 70 cts. per doz., \$5 per 100, \$48 per 1,000.

DOUBLE EARLY TULIPS

FLOWERS JUST AFTER EARLY TULIPS. IN LATE APRIL

Double Tulips are chiefly grown for their showy effects in masses, and are very lasting. Where a display of color is desired they are very satisfactory. Excellent for growing in pots or pans, but should not be forced into bloom very early.

The following list contains many of the best tested novelties, as well as all worth-while standard sorts.

Azalea.	B 12. Beautiful deep rose, flushed salmon. Doz.	100
	A splendid variety for forcing on account of its lovely color.	\$0 90 \$7 00
Couronne d'Or (Crown of Gold).	B 10. Large, bold flower of rich golden yellow, shaded copper. Excellent for bedding and winter forcing.	1 00 8 00
Electra.	B 13. Beautiful deep rose, feathered violet; a handsome variety; flowers of enormous size. Excellent for exhibition. Height 12 inches.	1 60 12 00
El Toreador.	B 12. Bright orange-scarlet, with broad margin of buff-yellow. Excellent for pots or bedding.	1 30 10 00
Golden Giant.	B 12. This is, without a doubt, the finest and largest double yellow Tulip in existence. It is a pure yellow sport of Couronne d'Or. Excellent for exhibition.	5 00 40 00
Imperator Rubrorum.	B 10. Excellent scarlet for bedding and forcing. Still remains among the best of the older varieties.	90 7 00
Mr. Van Tubergen.	B 16. Beautiful golden yellow. Another good sport of that excellent variety, Couronne d'Or, and while not as large as Golden Giant, it is a decided acquisition.	1 00 8 00
Murillo.	C 12. Delicate rose-pink, flushed white. Fine for bedding, and excellent for forcing.	60 4 50
Mystery of India.	B 12. Beautiful terra-cotta and orange, slightly shaded old-rose; a large, well-formed flower on a strong stem.	90 7 00
Orange Nassau.	B 12. A rather unusual color in Double Tulips—orange-red. A sport from that popular variety, Murillo. Very effective for planting in beds or borders.	5 00 40 00
Peach Blossom.	C 12. Bright rose-pink, flushed white, deepening with age to carmine-rose; large. A sport of Murillo. Excellent for pots.	1 00 8 00
Queen of the Pinks.	B 14. Splendid new shade of rosy pink; fine large flower of a lovely even tone when forced.	1 00 8 00
Safrano (Brimstone; Tea Rose).	B 12. This variety is a sport of Murillo; flowers open pale yellow, flushed salmon, but develop a rosy apricot in a day or so.	80 6 00
Salvator Rosa.	B 12. Beautiful deep rose, slightly flushed white. Excellent for beds or forcing.	80 6 00
Schoonoord.	B 12. A beautiful, pure white sport of Murillo, with the same excellent forcing qualities. One of the best double white varieties, if not the best.	80 6 00



Border of Double Tulips

Van der Hoef.	C 12. A beautiful pure yellow sport of the variety Murillo. Doz.	100
	Fine new variety for forcing.	\$1 00 \$8 00
Vuurbaak.	B 12. Brilliant scarlet, when fully open the flower gets an orange hue. One of the best scarlets for bedding owing to its sturdy stem.	1 00 7 50

S. & W. Co.'s Special Mixture. A mixture consisting of 15 named varieties, blended so as to give an assortment of all possible colors and shades, all of vigorous habit and large size, uniform height and time of blooming. 70 cts. per doz., \$5 per 100, \$48 per 1,000.

DOUBLE LATE TULIPS

Among the recent advances made by Tulip hybridizers in Holland, the Double Late Tulip may be counted as a distinct achievement from the standpoint of the wonderful peony-like flowers, strong stems, and well-filled blooms. For mass effect in the herbaceous border there are few Tulips that will give such a wonderful display. This, taken in connection with the unusual colors, should increase their demand by Tulip-lovers. The four varieties listed below bloom about the same time as the May-flowering Tulips listed in our catalogue under the headings, Darwin, Dutch Breeder, and Cottage and Hybrid Tulips.

Bleu Celeste.	Large, soft violet-purple flowers of a very pleasing color. A fine Tulip for cutting and excellent for planting in the herbaceous border. Height 14 inches.	\$1.50 per doz., \$12 per 100.
Epicure.	One of the finest new Double Late Tulips. Its color strikes a new note in Tulip shades and is perhaps best described as an even tone of rich apricot-salmon that looks particularly attractive in the bright sunshine and is very pleasing under artificial light. Height 20 inches.	\$3.50 per doz., \$25 per 100.

Mount Tacoma.	In form this Tulip is somewhat on the order of a semi-double pure white peony, the petals being slightly lacinated. Another real gem for the herbaceous border on account of its well-formed flower and large size. Height 26 inches.	\$5 per doz., \$40 per 100.
Pensee Rose.	Another Tulip of unique color, which is perhaps best described as a deep rose-lavender. The large, well-formed flowers are borne on stems 24 inches tall.	\$5 per doz., \$40 per 100.



SPECIAL NOTICE!

American-Grown Daffodil Bulbs

(FOR NATURALIZING)

AS WE were advised in the fall of 1923 by the Federal Horticultural Board that importation of Holland Daffodil bulbs, for commercial sale, would be restricted from entry into the United States after January, 1926, we began immediately to experiment with the production of this much-loved spring-flowering, bulbous plant in this country. After extended experiments we proved that the stock grown at our Long Island farms produced bulbs of high quality, some of the varieties producing hardy, sound, heavier stock than could be grown in Holland.

In order to encourage wider use of this splendid spring-flowering bulb, we are prepared to offer:

Special Mixture of Medium and Giant Trumpet Varieties
\$7 per 100, \$65 per 1,000, \$600 per 10,000

Grape Hyacinth, Heavenly Blue

One of the loveliest of the spring-flowering bulbous plants for naturalizing. They begin to bloom just after the crocuses and chionodoxas. The variety Heavenly Blue is excellent for planting in masses in the wild garden or along shrubbery borders in conjunction with daffodils. The blue coloring makes a delightful contrast. Given a congenial location and left undisturbed they reseed themselves and bloom profusely every year. (See colored illustration, page 59.)

Strong Bulbs, \$3.50 per 100, \$30 per 1,000

Polyanthus Narcissi

BUNCH-FLOWERING

VARIETIES FOR EARLY INDOOR GROWING

Not for Outdoor Planting, except south of the Carolinas
READY FOR DELIVERY OCTOBER 1

We are offering three varieties of this splendid type of Narcissus which are now universally grown indoors in pots of fiber or soil as well as in pebbles and water. The varieties are Paper-White Grandiflora, the popular bunch-flowering white variety, Grand Soleil d'Or, the popular yellow bunch-flowering variety, and Chinese Sacred Lilies or *Narcissus polyanthus orientalis*. These bulbs are produced for us by an expert grower in the South. The importation from France and China is no longer permitted.

Dishes of these, grown in pebbles and water, may be had in bloom continuously from Thanksgiving until Easter. The best method is to keep your bulbs in the containers in which they are shipped to you and to store them in a moderately cool, dry place. Plant different lots every three weeks from October 1 until March 1, and you can enjoy a constant succession of bloom.

Grand Soleil d'Or. This popular bunch-flowering variety of the Polyanthus type is as easy to grow in pebbles and water as in soil or our Shurgrow Bulb Fiber. The flowers are a clear sunny yellow, with bright orange cups. **\$2.50 per doz., \$18 per 100, \$160 per 1,000.**

Paper-White Grandiflora. The popular, bunch-flowering pure white Narcissus, frequently having thirty individual blooms and splendid decorative foliage from a single bulb. We offer two sizes, each suitable for growing indoors in pebbles and water or in our Shurgrow Bulb Fiber.

	Doz.	100	1,000
First-Size Bulbs	\$0 75	\$6 00	\$50 00
Jumbo Bulbs	1 00	7 00	60 00

Chinese Sacred Lily

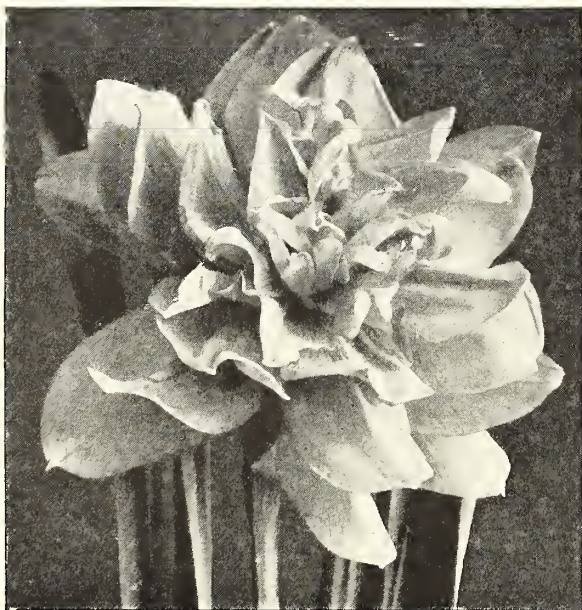
Narcissus Polyanthus Orientalis

The "Shui Sin Far," or Water Fairy Flower, Joss Flower or Flower of the Gods, etc., as it is called by the Celestials, is a variety of Narcissus, bearing in profusion chaste flowers of silvery white, with golden yellow cups. They are of exquisite beauty and entrancing perfume.

The bulbs, of large size and great vitality, are of luxuriant growth, producing several spikes of flowers; the incredibly short time required to bring bulbs into bloom (four to six weeks after planting) is one of the wonders of nature. You can almost see them grow, succeeding almost everywhere and



Paper-White Grandiflora Narcissi growing among pebbles in water



Double Narcissus

with everybody. They do well in pots of earth, but are more novel and beautiful grown in shallow bowls of water, with enough fancy pebbles to prevent them from toppling over when in bloom. Each Doz. 100
Mammoth Bulbs.....\$0 20 \$2 00 \$15 00

SPECIAL OFFER. Containers and Materials for Growing Paper-White and Grand Soleil d'Or Narcissus Indoors.

Glass Bowls. Suitable to plant 3 bulbs. 35 cts. each, \$3.50 per doz.

Glass Bowls. Suitable to plant 6 bulbs. 50 cts. each, \$5 per doz.

Pebbles. Carefully screened and selected. Quart box, 20 cts., 2 qts. 35 cts.

Shurgrow Bulb Fiber. This is a prepared Fiber containing all the ingredients for producing blooms from bulbs indoors. It can be used for any dish, as it does not require drainage. Put up in quart package convenient for use. 15 cts. per qt., \$1.50 per doz. qts.

Double Narcissi (Daffodils)

The Double-flowering Daffodils offered in our list may be planted outdoors, but are admirably adapted for indoor growing in pots and pans, or may be forced in flats for cutting purposes. We have listed this year only one of the newer varieties of Double Daffodils, which is splendid for pot-culture and excellent for outdoor planting as well; owing to the flowers of American-grown Von Sion Narcissus and other double-flowering varieties showing a tendency to "come green," we have decided to omit them from our list.

Argent. C. This variety is best described as a Double incomparabilis. Very pale primrose perianth with a double row of petals; chrome-yellow cup. A fine new Double Daffodil with a strong stem. Height 14 inches. **15c. each, \$1.50 per doz., \$12 per 100, \$100 per 1,000.**

Two Fine Late June-Blooming Lilies

LILIUM CANDIDUM

(The Madonna Lily)

One of the oldest plants cultivated in gardens. It is sculptured on some of the most ancient vases dug up in Crete, where a civilization antedating that of the most ancient Egyptians flourished 5000 years ago or more. It is a symbol of purity and all things lovely. The plants make healthy evergreen rosettes of leaves in the autumn, from which stout stems, clothed with short leaves, arise in spring, bearing spire-like clusters of pure white, starry Lilies beautifully illumined by brilliant yellow anthers. They, too, are deliciously sweet, but are not so overpoweringly fragrant as some others, and may be cut and brought into the house with comfort. It blooms in June, immediately before the Royal Lily, at the same time as Delphinium Belladonna, with which it is frequently combined. As it is base-rooting only, it should be planted shallow. It likes good, well-limed garden soil and a sunny exposure. The best bulbs are those which we import from northern France and England. They should be planted as soon as received, preferably in October.

	Each	Doz.	100
First-Size Bulbs	\$0 30	\$3 00	\$20 00
Mammoth Bulbs	35	3 50	25 00
Jumbo Bulbs	50	5 00	40 00

LILIUM REGALE

(The Royal Lily)

A very hardy, easily grown variety from the mountains of western China, and one of the most glorious of all. The flowers are gigantic, of true Lily shape, with long, waxen petals, recurved at the tips, and lightly frilled along the edges. In effect it is pure white, but the center of the flower is richly suffused with golden yellow and the brilliant orange-yellow anthers are large and showy. The outside of the buds and the three outer petals are stained with purple-brown, which often gives a faint pinkish value to the flowers seen in quantity. This is unequalled for magnificent effect. Stem-rooting; plant moderately deep.

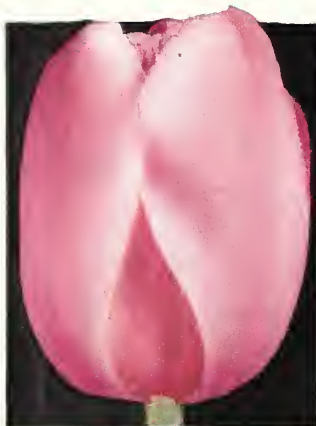
	Each	Doz.	100
First-Size Bulbs, 6 to 7 in. circum.	\$0 35	\$3 50	\$25 00
Mammoth Bulbs, 7 to 8 in. circum.	50	5 00	40 00
Jumbo Bulbs, 8 to 9 in. circum.	65	6 50	50 00
Monster Bulbs, 10 in. and over circum. ..	1 00	10 00	80 00



Lilium candidum



Lilium regale



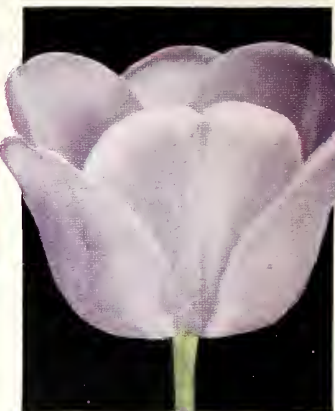
LA FIANCEE



PRIDE OF HAARLEM



MRS. POTTER PALMER



REV. H. EWBank



KING HAROLD

Stumpp & Walter Co.'s
COLORFUL COLLECTION
12 FINE DARWIN TULIPS

THE purpose of our special offering of the Darwin Tulips featured in color on this page is to make it possible for our patrons to purchase at special prices the Collections offered or to buy the separate varieties according to their color desires. It should be borne in mind that under good cultivation all the varieties listed grow much larger.
 (All varieties are fully described on pages 4 to 7.)

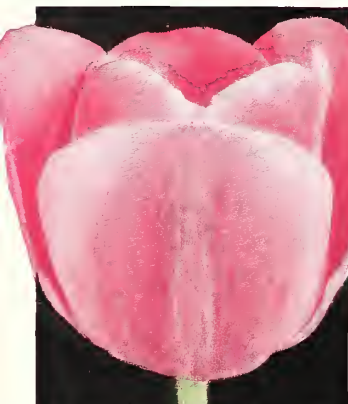
	Doz.	100
Dream	\$0 80	\$6 00
Farncombe Sanders	70	5 00
Feu Brillant	90	7 00
Giant	1 30	10 00
King Harold	75	5 50
La Fiancee	1 00	8 00
La Tulipe Noire	90	7 00
Matchless	1 00	8 00
Mrs. Potter Palmer	90	7 00
Pride of Haarlem	60	4 50
Princess Elizabeth	70	5 00
Rev. H. Ewbank	70	5 00

Special Collection Offer

6 bulbs each of the above 12 varieties (72 bulbs)	\$5 00
12 bulbs each of the above 12 varieties (144 bulbs).....	9 50
25 bulbs each of the above 12 varieties (300 bulbs).....	18 00
50 bulbs each of the above 12 varieties (600 bulbs).....	35 00
100 bulbs each of the above 12 varieties (1200 bulbs).....	65 00



MATCHLESS



PRINCESS ELIZABETH



FARNCOMBE SANDERS



GIANT



FEU BRILLANT



DREAM



LA TULIPE NOIRE



FAIRY



CORIDION



PRINCE OF ORANGE



BRONZE QUEEN



LOUIS XIV

Stumpp & Walter Co.'s
BREEDER AND COTTAGE TULIPS
12 FINE VARIETIES

AS on the preceding page, we offer 6 varieties of the popular Breeder Tulips and 6 varieties of the lovely Cottage Garden Tulips.

6 FINE BREEDER TULIPS

	Doz.	100
Bronze Queen	\$0 70	\$5 00
Coridion	2 00	15 00
Fairy	70	5 00
Godet Parfait	1 00	8 00
Louis XIV	1 00	8 00
Prince of Orange	1 00	8 00

6 FINE COTTAGE TULIPS

	Doz.	100
Gesneriana Spathulata	\$0 70	\$5 00
Hammer Hales	80	6 00
Inglescombe Pink	60	4 50
John Ruskin	70	5 00
Orange King	70	5 00
Mrs. Moon	1 00	8 00

Special Collection Offer

6 bulbs each of the above 12 varieties (72 bulbs)	\$5 00
12 bulbs each of the above 12 varieties (144 bulbs)	9 50
25 bulbs each of the above 12 varieties (300 bulbs)	18 00
50 bulbs each of the above 12 varieties (600 bulbs)	35 00
100 bulbs each of the above 12 varieties (1200 bulbs)	65 00



GODET PARFAIT



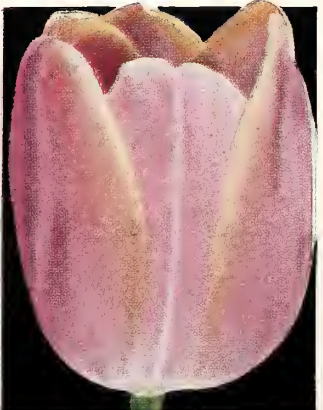
MRS. MOON



ORANGE KING



HAMMER HALES



INGLESCOMBE PINK



JOHN RUSKIN



GESNERIANA SPATHULATA



THREE FINE JAPANESE LILIES

WE are featuring what we believe to be the three most popular garden Lilies grown in American gardens. The sizes offered we consider the best for outdoor planting.

	Each	Doz.	100
Auratum . . .	\$0 45	\$4 50	\$35 00
Speciosum Al- bum	50	5 00	40 00
Speciosum Mag- nificum	45	4 50	35 00

For complete descriptions of *Liliums* listed above, see pages 31 and 32

NARCISSI or DAFFODILS

No garden would be complete without the Narcissus or Daffodil. The innumerable positions in the garden in which their use may be availed of is responsible for their popularity. It is not only for garden culture that they are largely used, but many of the varieties are extensively grown in pots or pans for indoor decoration during late winter months. Some varieties in our list may be forced into bloom as early as January. Their simple beauty of form, dignity of habit, elegance of bloom and ease of culture, account for the new interest amounting to enthusiasm of flower-lovers all over Europe. Each year we are greeted with a profusion of novelties, many of which, on account of the high prices, are not available for immediate use.

All the varieties of Narcissi or Daffodils offered in our catalogue, with the exception of the Polyanthus Narcissus and such other few sorts as are especially noted, are perfectly hardy, and will continue to flower outdoors each year if given a congenial location and not disturbed. Where they are used for bedding, and must be lifted, it is wise to permit bulbs to remain after flowering until the foliage turns brown down to the ground, then lifted, and the earth shaken from the bulbs; they should be stored in a cool, dry place. Narcissi, like hyacinths, should be planted by early November, and should not be allowed to remain out of the ground so long as tulips, which may be planted up to hard frost.

CULTURE.—Owing to the various sizes of the bulbs, it is not advisable to state the exact depth to plant, but the simple rule of covering the bulb one and a half times its own depth, and making the distance between the bulbs 3 to 4 inches for the smaller sorts and 5 to 6 inches for the larger ones, is a good one. For greenhouse or window-garden culture treat them the same as hyacinths, except that three or more bulbs of one variety should be planted in a pot, and not single specimens.

Where a succession of blooms is desired for outdoors as well as indoors, we have arranged the following code: A, first early; B, second early; C, midseason; D, late; E, very late.

NOTE.—In describing Daffodils, Narcissi, etc., we have referred to the "perianth" and "trumpet," "crown" or "cup." The "perianth" is the surrounding row of petals or wings, and the other terms apply to the central funnel-like tube.

SPECIAL NOTICE

American-Grown Daffodil Bulbs

As we were advised in the fall of 1923 by the Federal Horticultural Board that importation of Holland Daffodil bulbs, for commercial sale, would be restricted from entry into the United States after January, 1926, we began immediately to experiment with the production of this much-loved spring-flowering bulbous plant in this country. After extended experiments, we proved that the stock grown at our Long Island farms produced bulbs of high quality, some of the varieties producing hardy, sound, heavier stock than could be grown in Holland.

Golden Spur and Victoria

We have omitted and no longer grow at our farm the varieties Golden Spur and Victoria.

Golden Spur, which was largely used as an early variety, cannot be produced in this country in the quality we demand, and we find that where King Alfred is properly handled by the forcer, it can be brought to bloom equally as early and is much superior in size and refinement of bloom.

Victoria, likewise, does not do well. We suggest Empress or Spring Glory for this variety. Spring Glory is much superior in every way.

Giant Trumpet Varieties, Including New and Rare Sorts

The flowers of the Giant Trumpet varieties are of large size; the "perianth," or wing-like petals, according to the variety, measure from 2 to 4 inches across, and the "trumpets," or central funnel-like tubes, vary from 3 to 4 inches in length. Flowers are borne on strong, stiff stems, from 12 to 18 inches high.

Alice Knights. White perianth and creamy white trumpet passing to pure white and elegantly recurved at the brim. One of the earliest white trumpets, and a very fine variety. Height 15 inches. **30 cts. each, \$3 per doz., \$25 per 100.**

Cleopatra. Primrose-yellow perianth, with broad and overlapping petals; rich yellow trumpet, well-frilled at the brim. A variety of refined character and the very finest yellow trumpet of Emperor coloring. Height 18 inches. **50 cts. each, \$5 per doz., \$40 per 100.**

Duke of Bedford. B. White perianth, with loose, spreading petals and long, deep yellow trumpet well frilled at the mouth. The marked contrast in color between the deep trumpet and the glistening white perianth is very effective. A splendid exhibition sort. Height 16 inches. **35 cts. each, \$3.50 per doz., \$25 per 100.**



Giant Trumpet Narcissi

1. Van Waveren's Giant.
2. King Alfred.

3. Glory of Noordwijk.
4. Spring Glory.

Giant Trumpet Narcissi, continued

Emperor. C. Perianth deep primrose-yellow, trumpet rich yellow; a very large flower. Excellent for naturalizing or forcing. Height 18 inches. 20 cts. each, \$2 per doz., \$15 per 100, \$140 per 1,000.

Empress. C. White perianth of great substance; trumpet rich chrome-yellow. Showy for border or naturalizing. Does equally well forced. Height 18 inches. 20 cts. each, \$2 per doz., \$15 per 100, \$140 per 1,000.

Glory of Leyden. C. Perianth pale yellow, broad and spreading, very long trumpet of golden yellow; enormous flower of great vigor and substance. An especially fine variety for borders and excellent for pot culture. Should not be forced hard. Must be planted early. Height 15 inches. 35 cts. each, \$3.50 per doz., \$25 per 100.

Glory of Noordwijk. B. One of the best and most attractive of the Bicolors; perianth sulphur-white, trumpet chrome-yellow, very long and elegantly reflexed at the brim; of good size and substance. Grand for pots or cutting. Height 14 inches. 35 cts. each, \$3.50 per doz., \$25 per 100.

Golden Glory. A seedling of King Alfred; flower is of same size and coloring but the brim of the trumpet is somewhat more elegantly recurved. Height 20 inches. 60 cts. each, \$6 per doz., \$45 per 100.

King Alfred. C. A king among the new varieties, one that responds splendidly to forcing and one that you should grow a few of. For pans or pots for exhibition, its size, general vigor, and depth of color put it in a distinct class of the **Finest Giant Golden Yellow Narcissi**. Wherever this Narcissus has been exhibited it has caused a sensation. Perianth often measures 4 inches across; trumpet fully 2 inches. **Jumbo Bulbs.** 35 cts. each, \$3.50 per doz., \$25 per 100.

Olympia. B. Perianth light chrome-yellow, trumpet deep chrome-yellow, of huge dimensions. Splendid exhibition sort; a variety in the same class as King Alfred; of wonderful constitution and size. Height 15 inches. 35c. each, \$3.50 per doz., \$25 per 100.

Peter Barr. We regard this as one of the finest, if not the finest, pure white Giant Trumpet varieties. A flower of large size and fine form. Height 18 inches. 60 cts. each, \$6 per doz., \$45 per 100.

Spring Glory. B. Clear white perianth with long petals of splendid form, long trumpet of deep yellow, well reflexing at the brim. A very vigorous grower and one of the best of the newer Daffodils for pot culture. 35 cts. each, \$3.50 per doz., \$25 per 100.

Treserve. B. Yellow Trumpet. Perianth primrose-yellow, slightly hooded; very large trumpet of rich canary-yellow, broad at the mouth and deeply flanged. Height 17 inches. 35 cts. each, \$3.50 per doz., \$25 per 100.

Vanilla. C. This is a grand, tall-growing and very handsome variety, having a fine, bold trumpet of deep yellow, with a paler perianth, and possessing the added charm of a most pleasing and delicate odor. It flowers the same time as Emperor, and is a good variety for forcing. Height 20 inches. 15 cts. each, \$1.25 per doz., \$10 per 100.

Van Waveren's Giant. B. Bicolor Trumpet. Broad perianth of campanulate form, bright yellow trumpet with very large, open mouth flanged at the brim. Huge flower of vigorous habit and very showy character. Height 17 inches. 50 cts. each, \$5 per doz., \$35 per 100.

Weardale Perfection. Perianth milk-white with broad, overlapping petals; long trumpet of primrose-yellow; elegantly fluted at the mouth. A good grower and free bloomer. 35 cts. each, \$3.50 per doz., \$25 per 100.



There are many varieties of Daffodils offered on this and the preceding page that will be excellent in your foundation planting or shrubby border for late April and early May blooming

Medium Trumpet Narcissi, or Daffodils

This is also a very popular type or rather types of the Narcissus or Daffodil family. Splendid for garden culture, in pots or pans, or in flats, for cut-flowers.

The following varieties are grouped in some catalogues under the headings, Barrii, Incomparabilis and Leedsii types.

NOTE.—“*Perianth*” is surrounding row of petals, or wings; “*crown*” or “*cup*” is the central cup or funnel-like tube.

BARRII. Daffodils belonging to this group are crosses between Yellow Giant Trumpets and the Poet's Narcissi. The crown usually is not over one-third the length of the perianth petals.

INCOMPARABILIS. The Incomparabilis varieties are also crosses between the Yellow Giant Trumpets and the Poet's Narcissi, but the crowns are larger than those of the Barrii group, sometimes being three-fourths of the length of the perianth petals. The color of the perianth is either yellow or white.

LEEDSII. These are crosses between White Giant Trumpets and the Poet's Narcissi. The crowns are as large as those of the Barrii and Incomparabilis groups, but the perianth petals are always white, and the crowns are mostly white or light yellow.

Albatross. (Barrii.) Large, flat, white perianth; cup pale citron, with a ribbon edge of scarlet. A fine large flower. Height 20 inches. 15 cts. each, \$1.50 per doz., \$12 per 100.

Arion. (Leedsii.) One of the finest of the new Leedsii. Pure white, overlapping perianth; short, pale yellow cup, edged orange, frilled. Very nice form and substance. Height 20 inches. 75 cts. each, \$7.50 per doz., \$60 per 100.

Autocrat. (Incomparabilis.) C. Clear golden yellow; broad perianth tending to reflex, cup widely expanded at the mouth. A very handsome variety for the border or pots. Height 20 inches. 15 cts. each, \$1.50 per doz., \$12 per 100.

Bernardino. (Incomparabilis.) Very large, creamy white perianth of great substance; large cup of pale lemon-yellow, flushed and edged pinkish apricot, and very heavily frilled. Height 20 inches. 40 cts. each, \$4 per doz., \$30 per 100.

Conspicuous. (Barrii.) C. Large, broad-spreading perianth of pale yellow, short darker yellow cup, brightly edged orange-scarlet. Splendid for any position in the garden. Height 21 inches. 15 cts. each, \$1.25 per doz., \$10 per 100, \$90 per 1,000.

Croesus. (Incomparabilis.) Pale primrose perianth with thick, overlapping petals; wide, expanded crown of large size, heavily suffused and stained deep orange-red. A flower of magnificent substance and one of the finest introductions of recent years. \$1.50 each, \$15 per doz.

Duchess of Westminster. (Leedsii.) C. Pure white perianth; cup pale canary-yellow, slightly darker at the edge, passing into ivory-white; large star-like flower of exquisite beauty. Height 16 inches. 20 cts. each, \$2 per doz., \$15 per 100.

Great Warley. (Incomparabilis.) One of the finest of the newer Incomparabilis. Pure white, overlapping perianth; cup an even tone of lemon-yellow, nicely frilled. \$1 each, \$10 per doz.



Medium Trumpet Narcissus, Lucifer

Hera. (Leedsii.) One of the finest of the new Leedsii Daffodils. The pure white perianth petals seem joined together, so perfect is their overlapping; cup pale citron-yellow, elegantly fluted. A very refined variety. Height 18 inches. 60 cts. each, \$6 per doz., \$45 per 100.

Lady Godiva. (Barrii.) C. Large, spreading perianth of pure white, cup large, pale yellow, edged orange-scarlet. A splendid variety in every way. Height 18 inches. 15 cts. each, \$1.50 per doz., \$12 per 100.

Lady Moore. (Barrii.) C. A stately flower with a creamy white perianth, and a large, dark yellow cup, edged orange-scarlet. A variety that is very striking in appearance and sure to be appreciated by discriminating Daffodil lovers. 40 cts. each, \$4 per doz., \$30 per 100.

Lord Kitchener. (Leedsii.) Large, snowy white perianth, broad and flat, of great substance; big crown of the palest primrose, widely open at mouth and elegantly crimped and fluted at the brim. A flower of perfect quality and refinement. Height 21 inches. 35 cts. each, \$3.50 per doz., \$25 per 100.

Lucifer. (Incomparabilis.) C. Perianth sulphur-white, with long, well-rounded petals; cup chrome-yellow, with intense orange-scarlet suffusions. A bold, showy flower for outdoors, holding its color well. Height 18 inches. 15 cts. each, \$1.25 per doz., \$10 per 100, \$90 per 1,000.

Masterpiece. (Barrii.) Perianth sulphur-white with broad, very round petals of great substance and Poeticus character, eye orange-scarlet, quite flat and beautifully crinkled, the color covering the entire surface of the inch-wide eye. Height 22 inches. 35 cts. each, \$3.50 per doz., \$25 per 100.

Mrs. Langtry. (Leedsii.) D. A remarkably free-flowering variety, each bulb usually producing several flowers; broad white perianth, white cup opening pale primrose. Height 16 inches. 15 cts. each, \$1.25 per doz., \$10 per 100.

Nannie Nunn. (Barrii.) This is one of the Daffodils that is very much admired at our Daffodil Farm. The perianth is a pure cream-white; cup a vivid orange-scarlet. A brilliant Daffodil and one of the finest of the “so-called” red-cup varieties. Height 18 inches. 60 cts. each, \$6 per doz., \$45 per 100.

Queen of the North. (Leedsii.) C. Broad, large perianth of clear, glistening white and remarkable texture; cup soft primrose-yellow, with narrow rim of sulphur-white. Height 18 inches. 15 cts. each, \$1.25 per doz., \$10 per 100, \$90 per 1,000.

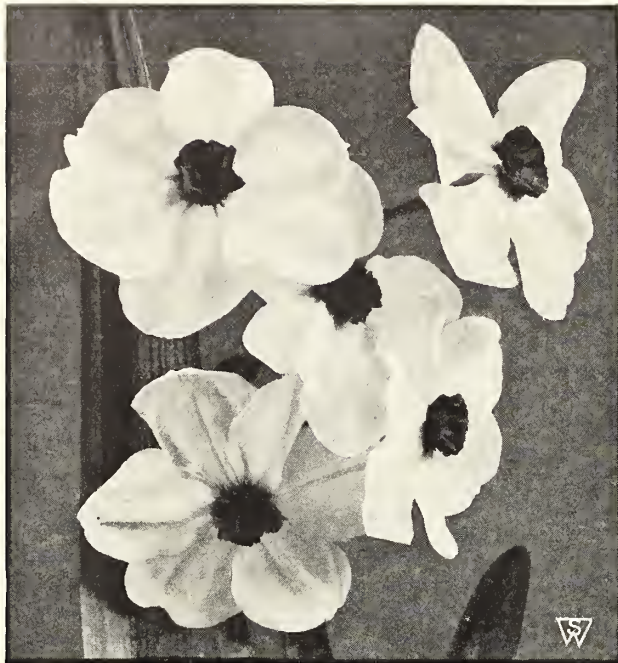
Red Beacon. (Barrii.) Broad white perianth of splendid substance, with broad well-frilled cup of dazzling orange-scarlet. A very striking variety on account of its brilliant scarlet center. 35 cts. each, \$3.50 per doz., \$25 per 100.

Sir Watkin. (Incomparabilis.) C. Perianth primrose-yellow; large and well-formed yellow cup, tinted deep yellow. A giant among the Medium Trumpet sorts. A grand flower of wonderful substance for garden culture or pots, this variety frequently has flowers 5 inches across, and its splendid proportion and ease of culture cause it to be one of the most popular of the older varieties. Height 18 inches. 15 cts. each, \$1.50 per doz., \$12 per 100, \$110 per 1,000.

White Lady. (Leedsii.) C. Broad, white perianth of perfect form; small cup of pale canary, beautifully crinkled. Fine for outdoor planting, making a splendid cut-flower. Height 20 inches. 15 cts. each, \$1.25 per doz., \$10 per 100, \$90 per 1,000.

Whitewell. (Incomparabilis.) Flat, creamy white perianth, with very broad, overlapping petals; large, open cup of deep chrome-yellow. A very large flower of wonderful substance. Height 18 inches. 30 cts. each, \$3 per doz., \$20 per 100.

Will Scarlet. (Incomparabilis.) Creamy white perianth; cup widely expanded and of a brilliant orange-scarlet, elegantly frilled. Very bright, and one of the nearest reds. 20 cts. each, \$2 per doz., \$15 per 100.



Narcissus Poetaz, Aspasia



Narcissus Poeticus, King Edward VII

Narcissus Poetaz

THE HARDY CLUSTER-FLOWERED POET'S NARCISSUS

The chief characteristics of this type of Narcissus is that hybridizers by crossing the strong-scented Polyanthus varieties with the Poeticus type, developed a hardy strain of Daffodils which has the bunch-flowered character of the Polyanthus with larger flowers similar to the Poet's described on this page. They are excellent for pot culture or are splendid for the garden border.

ASPASIA. C. Perianth pure white, with soft yellow eye; three or four flowers on a stem. A very easy variety to get in flower in pots and especially bright in color. Height 18 inches. **15 cts. each, \$1.50 per doz., \$12 per 100, \$110 per 1,000.**

EARLY PERFECTION. One of the handsomest of the new Poetaz varieties. Perianth and cup an even tone of bright yellow; very free flowering. Height 18 inches. **20 cts. each, \$2 per doz., \$15 per 100.**

IDEAL. C. Perianth pure white, with a dark orange eye; three or four flowers on a stem. A very easy variety to get in flower in pots and very charming on account of the size of the flowers and striking contrast of the dark orange eye. Height 18 inches. **15 cts. each, \$1.50 per doz., \$12 per 100, \$110 per 1,000.**

KLONDYKE. B. Perianth an even tone of pure bright yellow, with golden yellow eye. A variety of wonderful vigor and size giving five to six flowers on a stem. Height 15 inches. **20 cts. each, \$2 per doz., \$15 per 100.**

LAURENS KOSTER. B. Perianth pure white, with soft yellow eye. A variety that is much admired on account of the large size of the flowers. It is a strong grower, frequently having five flowers on a stem. Height 18 inches. **15 cts. each, \$1.50 per doz., \$12 per 100, \$110 per 1,000.**

The Poet's Narcissi

Narcissus poeticus

This class of Narcissus, instead of having a trumpet or crown, has a small, wide-mouthed cup. They are very hardy, and are used in large numbers for naturalizing, their simplicity of form and delightful fragrance making them highly prized. Cassandra, Epic, King Edward VII, and Ornatus are used with excellent success for growing indoors in pots or pans, or gently forced into bloom for cutting purposes.

POETICUS (Pheasant's Eye). D. The original late-flowering Pheasant's Eye variety so popular for gardens and naturalizing; pure white flowers with orange cup, edged with red. Height 15 inches. **15 cts. each, \$1.25 per doz., \$9 per 100, \$85 per 1,000.**

POETICUS, CASSANDRA. This and Horace are quite the largest of the new Poet varieties. Perianth white, cup canary-yellow, rimmed bright red. Height 18 inches. **20 cts. each, \$2 per doz., \$15 per 100.**

POETICUS, HORACE. C. Quite the best and largest of the new Poet's varieties. The white perianth is of large size, cup canary-yellow, rimmed bright red. Height 17 inches. **15 cts. each, \$1.25 per doz., \$10 per 100, \$90 per 1,000.**

POETICUS, KING EDWARD VII. C. Round, white perianth, cup light yellow, margined deep red. A vigorous grower, excellent for pot culture. Height 15 inches. **15 cts. each, \$1.25 per doz., \$10 per 100, \$90 per 1,000.**

POETICUS ORNATUS (Improved Poeticus). C. Grand flower for cutting. Larger and more symmetrical than the old variety and considerably earlier. Pure white flowers, saffron cup, tinged rosy scarlet. Magnificent cut-flower. Height 15 inches. **15 cts. each, \$1.25 per doz., \$9 per 100, \$85 per 1,000.**

Sweet-Scented Jonquils

Very much prized for their deliciously scented golden flowers; perfectly hardy in gardens or naturalized, also admirably adapted to indoor culture in pots of soil.

Buttercup. This and Gold Sceptre are two of the finest new Jonquils. Pure golden yellow overlapping perianth; straight yellow cup; 5 to 8 flowers on a stem; has a delicate perfume. Height 21 inches. **30 cts. each, \$3 per doz., \$20 per 100.**

Golden Sceptre. This free-flowering hybrid is very handsome. Its fine, elegant flowers are a rich golden yellow, sweetly scented. Height 20 inches. **35 cts. each, \$3.50 per doz., \$25 per 100.**

Giant Campernelle rugulosus. Much larger and finer than the old favorite Campernelle Jonquils; a much freer bloomer and much more desirable, especially for forcing. Beautiful, single, yellow, star-shaped flowers, exquisitely imbricated, borne in clusters of four to six on a stem; delightfully fragrant. Also very hardy and valuable for outdoor planting. **15c. each, \$1.50 per doz., \$10 per 100, \$95 per 1,000.**

Rugulosus, Double. The double form of the large-flowering Campernelle Jonquil. Large, double, yellow flowers; very fragrant and much superior to the common Double Jonquil. Height 20 inches. **15 cts. each, \$1.50 per doz., \$10 per 100, \$95 per 1,000.**

EXHIBITION HYACINTHS

Every year our growers prepare to select the finest grade of Hyacinths for us for exhibition. These bulbs are of maximum size, and fully aged for this purpose. The varieties listed below are grown especially for us, and intending exhibitors at the International Flower Show next spring will be interested in our selection of varieties which we believe, when grown for exhibition, should capture First Premiums. The Hyacinth enthusiast who is interested in novelty varieties will also find this list valuable.

We offer only the best sorts. There are several hundred varieties grown abroad, but we do not consider that there are over thirty of them worth growing. Bulbs such as we supply should be planted singly in a 5-inch pot, or four bulbs to an 8-inch bulb-pan. As there is a slight variation in the time of flowering between the different varieties, we have therefore indicated the relative time of blooming, 1 being early, 4 the latest.

ARENTINE ARENDSSEN. 1. Snowy white; open, wide-petaled bells, and narrow, well-filled spike. A splendid exhibition variety.

CITY OF HAARLEM. 3. Soft Naples yellow, shaded deeper; large, well-formed truss and good stem. One of the best new yellows.

DR. LIEBER. 2. Pale lavender-blue, with a faint tinge of dark violet; large spike, well filled out. A handsome variety for bedding and a very early forcer.

ELECTRA. 2. Light silvery blue; an enormous spike; full and well finished, with large bells. A very lovely shade of blue in Hyacinths.

GENERAL DE WET. 2. Soft light pink; a fine spike with large bells. Pink sport of the well-known variety, Grand Maitre.

GERTRUDE. 1. Dark pink; strong, compact spike. A variety used largely by commercial florists on account of its earliness.

GRAND MAITRE. 2. Dark lavender-blue; large bells, and very long, well-filled truss, on an unusually strong stem.

KING OF THE BLUES. 4. Deep dark blue; splendid spike and bell. Excellent for late forcing.

LADY DERBY. 1. Clear rose-pink variety. A splendid forcing variety as the strong stems hold the truss well. Considered the finest rose-pink Hyacinth.

LA GRANDESSE. 3. Pure white flowers with waxy bells on long, full spike of perfect form.

LA VICTOIRE. 1. Bright, glistening carmine-rose; under glass this variety is a fine dark pink; well-filled spike on a strong stem.

L'INNOCENCE. 1. Pure white; fine truss of large bells, of great substance.

LORD BALFOUR. 1. Lilac-rose, tinged dark violet—a distinct color. The best Hyacinth of this color.

MYOSOTIS. 2. An even tone of light blue; well filled spike of large-sized bells. One of the most attractive of its color.

ORANGEBOVEN. 4. A very lovely and distinct color, different from all the others, perhaps best described as a ruddy apricot. This variety does not make a very large bulb.

PERLE BRILLANTE. 2. Light blue, lavender; big bells on a large, finely formed, stiff spike.

PRINCE HENRY. Clear Naples yellow. Long, narrow truss, with good bells and stem. A splendid new yellow variety.

QUEEN OF THE PINKS. 3. Very bright rose-pink, of unusually clear tone; large spike with large bells.

SCHOTEL. 1. Soft light blue; very long and perfect truss, with large bells; easily forced.

YELLOW HAMMER. 1. Creamy yellow; compact spike and large bells.



These large spikes of Dutch Hyacinths were produced from our Exhibition Grade

Special Offer. We place large contracts for the above varieties and thus secure the pick of the crop. This enables us to offer at a uniform price of 30 cts. each, \$3 per doz., \$20 per 100.



MATCHLESS BEDDING HYACINTHS

Special named varieties in distinct shades of color, to flower at the same time

BULBS MEASURE 7 TO 8 INCHES IN CIRCUMFERENCE

The Hyacinth chosen to represent each of the following shades of color is a variety which we have found from trials will be best in the three essential requirements: Best in its color; stoutest stem; largest truss of bells; so our customers will know that we have avoided using varieties that are of weak stem, and that do not support the blooms.

SPECIAL NOTICE: *We are glad to report that stocks of High-Quality Hyacinths have again reached prewar size, and that we are able to supply them at much reduced prices this year.*

CULTURE

These Hyacinths should be planted from 6 to 10 inches apart, and covered with at least 4 inches of soil from the top of the bulb. For beds or borders close to the conservatory or dwelling, 6 inches will make a fine display; but where the beds are planted to be viewed from a distance, they may be planted 10 inches apart. Hyacinths planted alternately with narcissi produce a most graceful effect, and for this combination 6 inches from bulb to bulb is also a very suitable distance. It is advisable to cover, after the bulbs have been planted, with leaves or some heavy material that will prevent them from freezing or being affected by early spring frosts after they have started.

Hyacinths, as well as narcissi, should be planted by November first in this latitude, as they are the better for early planting. Tulips may be planted up to December first, weather permitting.

	Delivered (by Express or Parcel Post) anywhere in the United States	Doz.	100	1,000
Matchless Bedding Scarlet	\$1 50	\$12 00	\$100 00
Matchless Bedding Light Pink	1 50	12 00	100 00
Matchless Bedding Dark Pink	1 50	12 00	100 00
Matchless Bedding Light Blue	1 50	12 00	100 00
Matchless Bedding Dark Blue	1 50	12 00	100 00
Matchless Bedding Pure White	1 50	12 00	100 00
Matchless Bedding Mauve	1 50	12 00	100 00
Matchless Bedding Deep Yellow	1 50	12 00	100 00

Suggestions for Effective Color Combinations

1. Matchless Bedding Pink and Light Blue.
2. Matchless Bedding Light Blue and Deep Yellow.
3. Matchless Bedding Light Blue and Dark Blue.
4. Matchless Bedding Dark Blue and Deep Yellow.

Prepared or Treated Dutch Hyacinths

These Hyacinths are given a special treatment in heated warehouses to advance the final development of the embryo flower and thereby make it possible to have them in bloom about three weeks before the others offered in our list. The bulbs are not as large as our Matchless Bedding or Second Size Hyacinths, but if potted early and given ample time to develop strong roots, will bloom early. We offer five distinct varieties.

L'Innocence. White.
Lady Derby. Rose-pink.
Nimrod. Delicate rose.

Schotel. Light blue.
Laura. Violet-blue.

Price, any of the above, 25 cts. each, \$2.50 per doz., \$15 per 100

Miniature or Dutch Roman Hyacinths

These Hyacinths are the same type as our Exhibition Hyacinths and our Matchless Bedding, except that they are small bulbs averaging $1\frac{1}{2}$ to $1\frac{3}{4}$ inches in diameter. They are splendid for growing in 6-inch pans, and it is advisable to grow one color of a variety in each pan. Largely used by commercial florists for Easter trade. We offer four fine varieties.

City of Haarlem. Yellow.
Grand Maitre. Lavender-blue.

Gertrude. Dark pink.
La Grandesse. White.

Price, any of the above, 10 cts. each, \$1 per doz., \$7 per 100

French Roman Hyacinths

French Roman Hyacinths are among the earliest bulbs to be had in flower. The bulbs arrive from France late in August, and, like all bulbs grown in the south of France, they may be had in flower from November all through the winter months, if potted up in September and at intervals of every two weeks. They are much prized for pots or cutting on account of their graceful appearance and delicate fragrance. The flowers are smaller than those of the Dutch Hyacinth, and are borne in great profusion, the larger bulbs frequently having three to five graceful spikes of bloom. They are not hardy in our northern climate, and should not be planted outdoors. The general culture as given for Freesias, page 30, is suggested.



French Roman Hyacinths

	Doz.	100	1,000
White. Mammoth bulbs, 12 to 15 ctms.	\$3 00	\$20 00	\$190 00
Jumbo bulbs, 13 to 15 ctms.	3 50	25 00	220 00
Single Rose. First-size bulbs.	2 00	15 00	125 00
Single Blue. First-size bulbs.	2 00	15 00	125 00

NEW GIANT-FLOWERING CROCUS (Extra-large Bulbs)

Crocuses, among the earliest bulbs to flower, are most effective when planted in masses on the lawn, or arranged in three or four rows of one color in the border. They are perfectly hardy, and may be left in the ground for three or four years after planting, without being disturbed. The best method is to scatter the bulbs about the lawn and use an ordinary garden dibble or "Slim Jim" trowel, inserting several bulbs in each spot. This makes a very pretty effect in early spring, and the foliage and tops may be safely cut along with the grass when the first mowing is made. They are very ornamental when flowered in pots of eight to ten bulbs to a 5-inch size. They will not flower if exposed to heat, nor must too severe forcing be attempted. After potting set bulbs in a cool cellar and water well. Leave them about six weeks until they are thoroughly rooted and then bring to the light of the conservatory or sunny window. Care should be taken to cover the bulbs about 1 inch, whether planted outdoors or in pots, as planting too deep causes them not to flower.

Five New Giant-Flowering Varieties

The following five new varieties of Crocus are among the best of the newer introductions. We earnestly suggest a trial of these.

Agnes. Pale lavender-blue. An extremely popular variety.

Grand Lilas. Pale lilac-blue. Very dainty color.

L'Innocence. Pure white. An old favorite in many gardens.

Lilaceus. Rich dark blue. Lovely for contrast.

Striped Queen. Violet, striped white. Large blooms, very striking.

Any of the above new varieties, \$1 per doz., \$7 per 100, \$65 per 1,000



Giant-Flowering Crocuses

Standard Large-Flowering

King of the Whites. Fine large white.

La Majestueuse. White, striped lilac.

Maximilian. Distinct shade of lavender.

Purpurea Grandiflora. Deep glossy purple.

Yellow Mammoth. Deep, large-flowering, yellow.

S. & W. Co.'s Mixture. Mixture of above sorts.

70 cts. per doz., \$5 per 100, \$45 per 1,000

Crocus Species

Korolkowi. A very pretty species from Turkestan and Bokhara. It blooms before the varieties listed above. Pretty, starry flowers of yellow with bronze-brown flush on the outside of the petals. A gem for rockeries. \$1.25 per doz., \$9 per 100, \$85 per 1,000.

GIANT FREESIAS

Without doubt the most sweetly scented flower grown; a single bloom permeates the living-room with its delicate perfume. Although they are quite popular and very easily raised, we would suggest the following treatment:

Procure the bulbs as early as possible, and plant them in successive batches from August to October, using from six to twenty-five bulbs for a single pan. The soil should be a mixture of loam, to which must be added leaf-mold and sand. The bulbs planted early, say August and September, may be placed outdoors in a sheltered spot until cold weather sets in; of course they must be regularly watered and kept growing all the time. In October, before frosts appear, the pots should be placed in frames, if possible, or near the window of an unheated room. Not before November must the young plants be brought to gentle heat, and if thus cared for they will flower perfectly in January. The foliage of the Freesias is very fine and slender and must be supported with light stakes placed around the outer edge of the pans. The glistening, pure white flowers are borne on long stems, and are very valuable for cutting.



A field of colored Freesias as grown in California

S. & W. CO.'S IMPROVED PURITY

Through painstaking effort our grower of Freesia Purity has maintained such a quality in our strain of this very desirable cut-flower by careful selection as to justify us in offering it as an improved strain.

	Doz.	100	1,000
Monster bulbs.....	\$0 75	\$5 00	\$45 00
Jumbo bulbs.....	60	4 50	40 00
Mammoth bulbs.....	50	3 50	30 00

Novelty Freesias

We offer below two new yellow Freesias which we consider a distinct advance over any of the existing yellows that are now in commercial production at this time.

GOLDEN DAFFODIL. This variety may best be described as a rich daffodil-yellow color, such as seen in the popular variety, King Alfred. The flowers are large, well-formed, and are borne on long, stiff stems. **\$1.75 per doz., \$12 per 100.**

GOLDEN TREASURE. A rich, sunny yellow, very similar to Golden Daffodil, except that the outer part of the flower is tinged with lilac, which, to our mind, greatly enhances its beauty when seen under artificial light. The blooms are large, well open, and are borne on long, stiff stems. **\$1.75 per doz., \$12 per 100.**

New and Rare Colored Freesias

Few, if any, of the newer creations in spring-flowering bulbs have been improved by the hybridist as has been the Freesia. We now have a splendid range of colored sorts which can be obtained at moderate prices on account of the supply having been increased by propagation. Our bulbs have been produced for us under contract by California's leading specialist in this lovely bulbous plant for indoor growing.

CALIFORNIA. A large flower of bright golden yellow; extra-fine strong grower and long stems. One of the very finest yellow Freesias. **\$1 per doz., \$8 per 100, \$75 per 1,000.**



S. & W. Co.'s Lily-of-the-Valley

CARRIE BUDAU. A beautiful lavender-pink, much on the order of General Pershing, but of a more beautiful bright pink shade. The flowers are larger and the stems stronger. **\$1.50 per doz., \$10 per 100, \$90 per 1,000.**

CARMENCITA. Medium-sized flower of a beautiful orange-salmon hue, with buff shading on the lower petals. Long, wiry stems. **\$1 per doz., \$8 per 100, \$75 per 1,000.**

FISCHER'S SPLENDENS. The stems are long and stiff, bearing as many flowers as Purity; of a beautiful deep lavender color which seems to be well retained throughout the life of the flower. **\$1 per doz., \$8 per 100, \$75 per 1,000.**

GENERAL PERSHING. Splendid popular lavender-pink; strong grower; on long, stiff stems. **\$1 per doz., \$7 per 100, \$60 per 1,000.**

JUNE MICHELSEN. Large-flowering deep rose-pink with light blush throat; three lower petals are veined purplish crimson with a deep yellow blotch on center petal. Good stiff stem and strong constitution. **\$1.50 per doz., \$10 per 100, \$95 per 1,000.**

LILA. Large, light lavender flowers, with pale yellow throat, five open at one time. Very luxuriant growth, with strong, long, straight stems and laterals. **\$1.50 per doz., \$10 per 100, \$95 per 1,000.**

MELBA. Flower very large, dark pink, with golden yellow throat, three or four open at one time. **\$1.50 per doz., \$10 per 100, \$95 per 1,000.**

MENDOTA. A new giant yellow Freesia of great perfection and splendid, clear color. Extra-strong, vigorous growth and long, sturdy stems make it a valuable cut-flower. **\$1.50 per doz., \$10 per 100, \$90 per 1,000.**

MRS. MARC PETERS. Very attractive, deep rosy salmon with lower petals blotched orange and yellow. Flowers are of good size and open up well. It is a good keeper. **\$1.75 per doz., \$12 per 100, \$110 per 1,000.**

OLIVETTE. Bright carmine-red, with light yellow throat. Lower petals have a deep yellow blotch with crimson veins. Very profuse bloomer. **\$1.50 per doz., \$10 per 100, \$95 per 1,000.**

WHITE STAR. A white Freesia of unusually sturdy growth. Tall, straight, wiry stems. Flowers are of good size, with great lasting qualities, and several open at one time. **\$1.50 per doz., \$10 per 100, \$95 per 1,000.**

LILY-OF-THE-VALLEY PIPS

For Greenhouse Growing. November Delivery

In judging the price of our Lily-of-the-Valley, please remember that the best is the cheapest. Our Valley is positively among the best. Is bought at open prices, with instructions for a selection of the best-developed pips. Our long experience and large importations have commanded this extra selection. For growing indoors these Pips are the best that can be planted. **25 pips \$2.50, 100 pips \$9, 250 pips \$20, 500 pips \$37.50, 1,000 pips \$70.**

LILY-OF-THE-VALLEY PIPS

For Outdoor Planting. November Delivery

In the past, many garden enthusiasts have planted clumps of Lily-of-the-Valley in sheltered locations in their gardens. On account of the ruling of the Federal Horticultural Board, these clumps, before leaving Europe, must have all soil removed from their roots. Our experience for the past two years is that clumps received with the soil removed are not satisfactory for outdoor planting. The best way to get a good Lily-of-the-Valley bed, and the method used by professional gardeners, is to plant two-year-old pips 4 inches apart. This method will produce a better bed than by using clumps. We offer pips of smaller size than those used for growing Lily-of-the-Valley indoors for this purpose and at attractive prices. **Bundles of 10 pips 60 cts., 25 pips \$1.25, 100 pips \$4, 1,000 pips \$35.**

HARDY LILIES

There is a great deal of confusion and misunderstanding among otherwise competent gardeners concerning Lilies. Since they are becoming more popular every year, and great numbers of them are being planted, perhaps it is well to make plain that there are two broad classes of Lilies with respect to their roots.

One class forms roots at the base of the bulb only; these should be planted relatively shallow, not more than twice the depth of the bulb itself. The other class forms roots both at the base of the bulb and from the stem above it; these should be planted three to four times the depth of the bulb, or, in most cases, 6 to 10 inches deep.

All Lilies like perfect drainage. Most of them prefer the light shade over their new shoots, that is afforded by mulch and low-growing plants or shrubs, above which they can rise and display their blossoms to the sun. A few of them prefer a very moist situation, but it must be so arranged that all dampness drains immediately away from the bulb. This can be managed by planting them upon a small heap of stones. *All Bulbs do better if a handful of sharp builders' sand is placed immediately beneath the bulb to help provide better drainage.*

No Lily succeeds in manured ground. They vary in their preference for lime. Some are poisoned by it, others thrive in it, some are indifferent. We shall endeavor to state all these facts concerning each variety in the descriptions which follow.

The approximate order in which the Lilies described here bloom is as follows. This order has been determined by watching them for several seasons. It may vary somewhat according to whether the Lilies have a northern or a southern exposure, much or little shade, and according to the vagaries of the different seasons. In average years they bloom in about this succession.

June: Tenuifolium, Hansoni, Davuricum, Elegans, Martagon, Chalcedonicum.

June-July: Candidum, Testaceum, Regale, Humboldti, Pardalinum.

July: Superbum, Canadense, Grayi, Carolinianum, Batemannia, Krameri, Philadelphicum, Rubellum.

July-August: Colchicum, Auratum, Henryi.

August and later: Speciosum, Tigrinum.



Lilium auratum

Lilium Auratum

The Golden-banded Lily of Japan

This is the largest and, many think, the most gorgeous of all. The flowers are enormous (often 8 to 10 inches across), bell-shaped, with slightly flaring and waved petals, each thickly dotted with bristly maroon spots and marked by a showy bright yellow band down the center. They are intensely fragrant and come in tremendous clusters at the top of a strong, leafy stem. Excellent specimens may reach a height of 6 or more feet, with more than a dozen perfect blooms open at one time. They bloom in July and August, are stem-rooting, and should be planted quite deep. The ground should be covered with some low-growing plant, but the flowers must be able to rise above the undergrowth into full sunshine. These Lilies are most stately and magnificent, and in the evening, particularly on moonlight nights, array themselves in an almost unearthly beauty. At night the whole garden is pervaded with their delicious perfume.

	Each	Doz.	100
Bulbs 9 to 11 in. circum.	\$0 45	\$4 50	\$35 00
Bulbs 11 to 13 in. circum.	65	6 50	50 00

Lilium candidum

The Madonna Lily

One of the oldest plants cultivated in gardens. It is sculptured on some of the most ancient vases dug up in Crete, where a civilization antedating that of the most ancient Egyptians flourished 5,000 years ago or more. It is a symbol of purity and all things lovely. The plants make healthy evergreen rosettes of leaves in the autumn, from which stout stems, clothed with short leaves, arise in spring, bearing spire-like clusters of pure white, starry Lilies beautifully illumined by brilliant yellow anthers. They, too, are deliciously sweet, but are not so overpoweringly fragrant as some others, and may be cut and brought into the house with comfort. It blooms in June, immediately before the Royal Lily, at the same time as Delphinium Belladonna, with which it is frequently combined. As it is base-rooting only, it should be planted shallow. It likes good, well-limed garden soil and a sunny exposure. The best bulbs are those which we import from northern France and England. They should be planted as soon as received, preferably in October.

	Each	Doz.	100
First-Size Bulbs	\$0 30	\$3 00	\$20 00
Mammoth Bulbs	35	3 50	25 00
Jumbo Bulbs	50	5 00	40 00



Lilium speciosum magnificum

Lilium regale (The Royal Lily)

A very hardy, easily grown variety from the mountains of western China, and one of the most glorious of all. The flowers are gigantic, of true Lily shape, with long, waxen petals, recurved at the tips, and lightly frilled along the edges. In effect it is pure white, but the center of the flower is richly suffused with golden yellow and the brilliant orange-yellow anthers are large and showy. The outside of the buds and the three outer petals are stained with purple-brown, which often gives a faint pinkish value to the flowers seen in quantity. Unequaled for magnificent effect. Stem-rooting; plant moderately deep.

	Each	Doz.	100
First-Size Bulbs, 6 to 7 in. circum.	\$0 35	\$3 50	\$25 00
Mammoth Bulbs, 7 to 8 in. circum.	50	5 00	40 00
Jumbo Bulbs, 8 to 9 in. circum.	65	6 50	50 00
Monster Bulbs, 10 in. and over circum.	1 00	10 00	80 00

Lilium speciosum magnificum

This is the finest of the showy Lilies and better than either Rubrum or Melpomene. In general, the flowers are somewhat like those of *L. auratum*, somewhat smaller, with narrower and more twisted petals. The main color is white, clouded, banded, and spotted with beautiful crimson and pink, giving the effect of some rare orchid. The plants are strong, with long, handsome leaves, grow 3 to 5 feet high, and bear great loose sprays of magnificent, delicately scented flowers, in August and September. This is an easy Lily to grow, succeeding in half shade or sun, providing the lower part of the stems are sheltered. As it is stem-rooting, it should be planted deep, and seems to like light, slightly acid soil best, although good results may be had in ordinary garden ground.

	Each	Doz.	100
Bulbs 9 to 11 in. circum.	\$0 45	\$4 50	\$35 00
Bulbs 11 to 13 in. circum.	65	6 50	50 00

Lilium speciosum album (The White Showy Lily)

Slightly smaller in growth than Magnificum, but bears its fragrant, frosty blossoms in greatest profusion. They are snowy white with a deep emerald-green crease at the base of each petal, and showy yellow anthers. This is a charming Lily and requires the same sort of management as Magnificum.

	Each	Doz.	100
Bulbs 8 to 9 in. circum	\$0 50	\$5 00	\$40 00
Bulbs 9 to 11 in. circum	75	7 50	60 00

OTHER HARDY LILIES

AURATUM. See page 31.

AURATUM PICTUM. A showy form of Auratum without the bright yellow band, which is replaced by a brilliant red stripe near the tip of each petal. Plant deep.

	Each	Doz.	100
Bulbs 9 to 11 in. circum.	\$0 65	\$6 50	\$50 00

AURATUM PLATYPHYLLUM. The tallest and largest of the Auratums, with broader, darker leaves and larger flowers similar to *Auratum*, but it lacks the red spots, leaving a pure white bloom with a yellow band. Plant deep.

	Each	Doz.	100
Bulbs 9 to 11 in. circum.	\$0 45	\$4 50	\$35 00
Bulbs 11 to 13 in. circum.	65	6 50	50 00

BATEMANNIÆ. Batemann Lily. Like *L. elegans* in habit, with erect, chalice-shaped flowers of rich apricot color produced in July. It grows 3 to 4 feet high, with the flowers held upright on the top, and seems to enjoy ordinary garden soil in full sunlight, with a ground-cover. While it is stem-rooting, it need not be planted so deeply as most. **40 cts. each, \$4 per doz., \$30 per 100.**

CANDIDUM. See page 31.

CANADENSE. The red Meadow Lily of fields and roadsides. In July, its tall stems, 3 to 8 feet high, bear great sprays of nodding, bell-like, bright orange-crimson flowers dotted with maroon. It is stem-rooting, likes moist, well-drained ground. **30 cts. each, \$3 per doz., \$20 per 100.**

CAROLINIANUM. The Southern Swamp Lily. This is a near relative of the Turk's Cap Lily, *L. superbum*, but smaller and a little lighter in color. It grows 2 to 4 feet high, likes moist ground, but good drainage, and will endure almost total shade. The fragrant flowers are orange-crimson with a whitish throat and hang like bright red bells at the top of the stem. Likes acid soil and deep planting. Blooms in July. **40 cts. each, \$4 per doz., \$30 per 100.**

CHALCEDONICUM. The Scarlet Turk's Cap Lily. A slender, erect Lily, 2 to 4 feet high, bearing, in late June and July, three to six nodding, brilliant scarlet flowers with sharply reflexed petals faintly dotted purple and having scarlet anthers. Very showy and graceful. Likes dry, ordinary garden soil and full sunlight. Plant 5 inches deep and do not disturb it afterward. **\$2.50 each, \$25 per doz., \$180 per 100.**

COLCHICUM SCOVITZIANUM (*L. monodelphum scovitzianum*).

The stately Caucasian Lily. Great clusters of bell-shaped flowers with strongly recurved petals at the top of 6-foot stem. Flowers lemon-yellow, dotted and suffused with purple and greenish brown, very curious and beautiful, and are produced in late July and August. This is a base-rooting Lily and should not be planted too deep. It likes well-drained, sandy soil and a ground-cover or partial shade. **\$1 each, \$10 per doz., \$80 per 100.**

DAVURICUM (*L. umbellatum*; *L. dauricum*). The Candiestic Lily. Much like *L. elegans*, but taller and grows stiffly erect. A very showy variety with burning red-orange flowers held upright and produced in June. Plant shallow in full sunlight in any soil which is well-drained. **30 cts. each, \$3 per doz., \$20 per 100.**

ELEGANS, ALICE WILSON. Erect, dwarf plant, 1 to 2 feet high, with upright flowers of bright lemon-yellow, very bright and showy in June. Plant shallow in light soil in full sun. Good for naturalizing or rock-gardens. **65 cts. each, \$6.50 per doz., \$50 per 100.**

ELEGANS ATROSANGUINEUM. Similar to Alice Wilson in habit and needs the same treatment, but the flowers are dark blood-red with purple dots. **60 cts. each, \$6 per doz., \$45 per 100.**

GRAYI. Gray's Lily. Modest, bell-shaped flowers of orange-brown outside and bright red-orange and yellow inside, thickly powdered with darker dots. Grows 2 to 4 feet high, likes moist, loamy soil and a sunny place, such as a stream-bank. Blooms in July. Plant 4 inches deep. **40 cts. each, \$4 per doz., \$30 per 100.**

HANSONI. Hanson's Lily. Delicately fragrant, nodding flowers of pale yellow-orange, with thick, waxen, recurved petals, in clusters above broad whorls of leaves on stems 2 to 4 feet high. Likes shade, moist soil and blooms very early in June. Plant moderately deep. **60 cts. each, \$6 per doz., \$45 per 100.**

HENRYI. Henry's Lily or the Yellow Speciosum. A very lovely flower of the Speciosum type. It grows 8 to 10 feet high or more in favorable places, and likes to root among low shrubs, sending its tall stems up into the sunlight where its bright apricot-yellow flowers may show at their best. Ordinary soil suits it, and moderately deep planting. Blooms in July and August. **Strong bulbs, 75 cts. each, \$7.50 per doz., \$60 per 100.**



Lilium rubellum

Lilium tenuifolium

Lilium Batemanniae

Lilium Grayi

OTHER HARDY LILIES, continued

HUMBOLDTI. Humboldt's Lily. A strong-stemmed Lily 4 to 6 feet high, with brilliant orange-yellow, nodding flowers spotted with purple, in June and July. Likes rich soil, with plenty of moisture. Plant 4 inches deep. **75c. each, \$7.50 per doz., \$60 per 100.**

KRAMERI (*L. japonicum*). A lovely, big, pink Lily of true trumpet form, carried beautifully on stem about 2 to 3 feet high, but not very strong. It likes good, rich, peaty soil, with plenty of moisture and good drainage. Blooms in late July. Plant deep. **50 cts. each, \$5 per doz., \$40 per 100.**

MARTAGON. The Purple Lily. Small, turban-shaped flowers of dull purple, in great pyramidal sprays on a strong stem 2 to 5 feet high. Blooms in June. Likes cool, damp places with much shade. Plant shallow. **40 cts. each, \$4 per doz., \$30 per 100.**

PARDALINUM. The California Leopard Lily. Tall and striking, with rich orange-red flowers having back-flared petals, and strongly marked by purple spots ringed lighter. It blooms in June and July and likes deep, rich, woody soil. Plant 5 inches deep. **40 cts. each, \$4 per doz., \$30 per 100.**

PHILADELPHICUM. Wood Lily. A wild Lily of the eastern states, thriving in dry, sandy places with partial shade. The short stalks are 1 to 2 feet high, with dark red, erect flowers in July. Plant moderately deep. **30 cts. each, \$3 per doz., \$20 per 100.**

REGALE. See page 32.

RUBELLUM. A smaller form of *L. Kramerii*, which it resembles, but is much more dependable. It blooms in July and requires the same treatment. **45 cts. each, \$4.50 per doz., \$35 per 100.**

SPECIOSUM ALBUM. See page 32.

SPECIOSUM MAGNIFICUM. See page 32.

SUPERBUM. The Turk's-Cap Lily. Considered the handsomest American Lily. It grows 5 to 8 feet high, with an immense, pyramidal cluster of brilliant orange-red, turban-shaped flowers, yellowish inside and spotted brown. It likes to be planted deeply in moist, well-drained soil. **30 cts. each, \$3 per doz., \$20 per 100.**

TENUIFOLIUM. Coral Lily. A dwarf, very graceful Lily, with thread-like leaves and clusters of nodding, tiny, bell-like, recurved flowers of brilliant coral-red in June. Likes damp soil among rocks, with access to sunlight above. Plant 6 inches deep. **35 cts. each, \$3.50 per doz., \$25 per 100.**

TESTACEUM. Nankeen Lily. Of the same general habit as *L. candidum*. The stalks grow 3 to 6 feet tall and bear three to more than a dozen very charming, nodding, *Turk's-Cap* flowers, white outside, dusky orange or pale apricot within. Give same treatment as *L. candidum*. Blooms in June and July. **\$3 each, \$30 per doz., \$225 per 100.**

TIGRINUM. The Tiger Lily is well-known, with its showy, spotted red-orange flowers in wayside gardens in August and later. Very easy to grow, thriving in full sun in any soil. Plant shallow. **30 cts. each, \$3 per doz., \$20 per 100.**

TIGRINUM FLORE-PLENO. The double Tiger Lily is even showier and more handsome in a way than the original. It blooms a little later and requires the same treatment. **30 cts. each, \$3 per doz., \$20 per 100.**

LILY BULBS FOR INDOOR GROWING

CALLA LILIES

These like a stiff, clayey soil with a small quantity of shredded cow-manure. Bulbs should be set with the crown, or top, protruding just above the surface. When in growing condition, warm water given several times during the week will hasten the flowering period and increase the number of blooms. When using the large-sized bulbs, plant but one in a pot; smaller ones, two. We call especial attention to the Yellow Calla, which is one of the grandest varieties in cultivation, and most valuable for house or conservatory decoration. See the description below. Plant Callas indoors only in the fall of the year.

WHITE CALLA LILY—

	Each	Doz.	100
Jumbo size	\$0 50	\$5 00	\$40 00
Mammoth size	40	4 00	30 00
First size	25	2 50	20 00

YELLOW CALLA LILY. A grand novelty—one that should be planted extensively. The deep golden yellow flowers are truly magnificent and produced in abundance. The green foliage is spotted creamy white, which adds to its beauty.

	Each	Doz.	100
First-size bulbs	\$0 40	\$4 00	\$30 00
Mammoth bulbs	50	5 00	40 00

EASTER LILIES

We offer three types of the Longiflorum Lily usually grown by the florist. Of the three types we recommend *Lilium formosum* as the best for private conservatory growing.

LILIUM HARRISI—

These bulbs arrive from Bermuda in July.	Each	Doz.	100
7 to 9 inches in circumference.....	\$0 50	\$5 00	\$40 00
9 to 11 inches in circumference.....	75	7 50	60 00
11 to 13 inches in circumference.....	1 00	10 00	80 00

L. LONGIFLORUM FORMOSUM—

We have contracted for and expect some of each of the following sizes about Sept. 1.

7 to 9 inches in circumference.....	50	5 00	40 00
9 to 10 inches in circumference.....	75	7 50	60 00
10 to 12 inches in circumference.....	90	9 00	70 00
11 to 13 inches in circumference.....	1 00	11 00	80 00

L. LONGIFLORUM GIGANTEUM—

We have contracted for and expect some of each of the following sizes to arrive October or early November.

7 to 9 inches in circumference.....	40	4 00	30 00
9 to 10 inches in circumference.....	55	5 50	45 00
10 to 12 inches in circumference.....	75	7 50	60 00



Chionodoxa Luciliae

Fritillaria meleagris

Grape Hyacinths

Spanish Iris

ANEMONES (Windflower)

These popular flowers of French origin are useful as decorative plants for house or garden, and for cutting. If planted outdoors in the fall they must be well protected; they may also be planted in the spring in well-drained soil, and will flower during the summer.

His Excellency. Large, bright red, semi-double, showing a black center and suggesting a red poppy. \$1 per doz., \$7.50 per 100.

Excelsior Mixture. We consider this the finest strain of single-flowering Anemones as yet raised. The plants are taller in growth than the St. Brigid and more single. They contain many fine shades of blue, white, and scarlet. \$1 per doz., \$7.50 per 100.

St. Brigid. There is a wide range of rich and brilliant colors in this magnificent strain. \$1.50 per doz., \$10 per 100.

CHIONODOXA (Glory-of-the-Snow)

An early-flowering spring bulb for borders or rockery. Produces flower-spikes bearing ten to fifteen scilla-like flowers. Perfectly hardy and should be planted close together for effect.

Luciliae. Deep blue, with a white center. Doz.	100	1,000
Selected mother bulbs.....	\$0 60	\$4 00 \$35 00
Luciliae alba. Beautiful white form of above.	75	6 00 55 00
Sardensis. Gentian-blue; very striking.		
Selected mother bulbs.....	60	4 00 35 00

CYPRIPEDIUM

Acaule (Pink Lady's-slipper; Moccasin Flower). This beautiful native plant is an excellent subject for a damp, shady situation, woodland or shaded paths, and planted among ferns. It grows about 1 foot high and produces a large, showy, rose-purple bloom. The flowers appear to best effect when the plants are about 8 inches apart, and they should be planted about 3 inches deep. Prefers a mulch of pine or hemlock needles until it becomes established. \$4 per doz., \$30 per 100.

Pubescens. This is the large yellow Lady's-slipper or Moccasin Flower. Its showy, fragrant blooms are produced at the top of a leafy stem. These little plants are very attractive planted in colonies and are excellent for the woodland path or among sheltered evergreens. \$4 per doz., \$30 per 100.

DIELYTRA (Dicentra spectabilis)

Bleeding Heart or Seal Flower

An old-fashioned favorite, with long racemes of graceful heart-shaped pink flowers that are always attractive. It is used largely for forcing, but is also excellent for the garden border and especially valuable for planting in the shade. A splendid pot-plant for winter blooming in the greenhouse or conservatory. Strong clumps, 75 cts. each, \$7.50 per doz., \$60 per 100.

ERANTHIS HYEMALIS (Winter Aconite)

Early in spring the golden blossoms look charming, resting on an emerald-green cushion of leaves, and forming a striking contrast to the snowdrops, scillas, and chionodoxas. The foliage remains long after the flowers, making the plant especially valuable in moist situations, such as under trees, which the Winter Aconite enjoys, and where few other flowering plants will thrive. 3 to 8 inches high. 50 cts. per doz., \$3.50 per 100, \$30 per 1,000.

AMARYLLIS

Stump & Walter Co.'s Giant Hybrids

Few, if any, of the bulbous plants give the amateur greater pleasure for the window-garden than these giant-flowering Amaryllis that are so easily managed. Up to a few years ago, the finest varieties of these were exhibited at our New York Flower Show and were in the hands of just a few fanciers who procured their bulbs from a famous English collection. The United States Department of Agriculture, at Washington, has been improving on these strains for the past fifteen years, and our grower has been producing bulbs from a strain secured from the Government. One of the most glorious sights in March is several thousands of these magnificent pot plants in bloom in the Government greenhouses at Washington, D. C. Our strain of bulbs produces vigorous stems with from four to six blooms of the most perfect form, ranging in color from pure white grounds with varied markings of rose, red, and crimson, to the richest self colors, such as scarlet, crimson, bright red, cherry, and almost maroon. Pot up bulbs, as soon as received, in good garden loam, enriched with a handful of bone fertilizer; water well and store in a dark place in a temperature of 50 to 60 degrees for four weeks until well rooted, then bring to light. Put in a sunny window and give water regularly. Bulbs potted up during September and October may be had in bloom in March. After they are through blooming, the pots may be set outdoors, laying them on the side until the bulbs become dormant. They may be repotted the following fall.

Mixed colors, Jumbo Bulbs, suitable for 6-inch pots, \$1 each, \$10 per doz., \$75 per 100

EREMURUS

This noble and rare bulbous plant from Turkestan is one of the choicest subjects for the permanent hardy border. It thrives best in a well-drained, sheltered, sunny position, and prefers a deep sandy loam to which has been added a liberal quantity of well-rotted cow manure. A covering of 4 to 5 inches of leaves or litter will be beneficial and will save the young shoots, which start early, and are liable to be damaged by late frosts. It produces a tall, majestic flower-stalk, frequently 8 to 10 feet in height, which rises from a crowded tuft of narrow leaves and is crowned by a flower-spike 2 to 3 feet long, composed of closely set bell-shaped flowers which are quite star-like in effect. The colors are tones of rose, yellow, and white. Due to the pyramidal form of the flower-spikes they are excellent for the rear of the hardy border where columnar effect is desired.

Bungei. Very beautiful, deep yellow flowers in July. Each	10	
A strong grower, reaching a height of 6 feet.....	\$3 00	\$27 50
Elwesi. Beautiful soft pink blooms in June. Broad green foliage. A very vigorous-growing variety reaching a height of 10 to 12 feet.....	4 00	35 00
Elwesi albus. Pure white form of the above.....	6 00	55 00
Himalaicus. Waxy white flowers with golden anthers. Height 6 to 8 feet.....	3 00	27 50
Him-Rob. This is a hybrid between <i>E. himalaicus</i> and <i>E. robustus</i> , producing 8 to 10-foot stems with flower-spike 3 to 4 feet long, closely set with large flowers of pale silvery pink. Blooms in June.....	5 00	45 00
Robustus. Rosy pink flowers in June on 8 to 10-foot stems. Strong grower.....	4 00	35 00
Shelford. Coppery yellow flowers closely arranged on a 6-foot stem and almost clothing half of it....	5 00	45 00



Anemone, St. Brigid. See page 34 Cypripedium acaule. See page 34 Eremurus. See page 34 Leucojum vernum. See page 36

ERYTHRONIUM AMERICANUM

Dog's-tooth Violet

This charming native woodland plant is particularly suitable for the shady dell or woodland and is fine for shaded corners or the rock-garden. It produces, in April, small, lily-like flowers, which vary in color through shades of white, pink, bright yellow, rose, and cream. The beauty of the flowers is greatly enhanced by the richly mottled leaves. They seem to like a light, rather moist, well-drained soil. The bulbs should be planted about 5 inches deep. \$12 per 100.

FRITILLARIA IMPERIALIS

Crown Imperials

Well-known hardy border plants, bearing clusters of immense, pendent, bell-shaped flowers, surmounted with a tuft of green leaves. They are excellent for hardy borders and may be left undisturbed for years.

	Each	Doz.	100
Aurora. Orange.....	\$0 65	\$6 50	\$50 00
Crown on Crown. Several whorls of red flowers, one above the other.....	65	6 50	50 00

FRITILLARIA MELEAGRIS

Singular, dwarf, spring-flowering plants, bearing large, pendent bell-shaped flowers of various colors, in yellow, white, black, purple, striped and splashed, and checkered in the most curious way. They are invaluable for pot culture, and exceedingly pretty when grown in large groups in the garden border or wild garden in a dry situation.

	Doz.	100	1,000
Alba. White.....	\$1 00	\$8 00	\$75 00
Calypso. Purple.....	1 00	8 00	75 00
Mixed. Select mixtures.....	80	6 00	55 00

EARLY CURED GLADIOLUS

For Greenhouse Forcing. Delivery September 15 to 20

Quite a few of our friends who have experimented with the varieties of Gladiolus offered below have obtained excellent results from planting these Gladiolus indoors, to flower at Christmas and early in the spring. These bulbs are southern-grown, cured in June, and are ready to be planted in September for forcing. We offer the following varieties:

- Alice Tiplady.** (Primulinus.) Brilliant orange-salmon; very attractive. \$1.50 per doz., \$10 per 100.
- Los Angeles.** Beautiful shrimp-pink, with glowing orange-carmine blotch in throat; tall and graceful; blooms over a long period of time. A very excellent variety for cutting, being in constant demand by florists. \$2.50 per doz., \$20 per 100.
- Mary Pickford.** Delicate creamy white; throat fine, soft sulphur-yellow. \$1.50 per doz., \$10 per 100.
- Mrs. Frank Pendleton.** Salmon-pink with rich, deep maroon blotch on the three lower petals. A favorite variety. \$1.25 per doz., \$8 per 100.
- Souvenir.** (Primulinus.) Pure yellow. Another excellent forcer. \$1.50 per doz., \$10 per 100.
- Virginia.** Beautiful scarlet. One of the best for early forcing. \$1.50 per doz., \$10 per 100.

GRAPE HYACINTHS

Very beautiful little flowers for planting in masses, either in shade or where exposed to the sun. When planted out in herbaceous borders, where they can be left undisturbed, they do exceedingly well, each year adding to their already profuse-blooming qualities. Bloom outdoors during May. They are also excellent for pot culture.

Heavenly Blue. This variety is the largest and best of the Grape Hyacinths. The bells are large and form a fine truss. Splendid effects are produced by massing in the garden or border. 50 cts. per doz., \$3.50 per 100, \$30 per 1,000.

Album. A very beautiful white form of the above and excellent to use for contrasting with Heavenly Blue. 85 cts. per doz., \$6 per 100, \$55 per 1,000.

BULBOUS IRISES (Spanish and Dutch)

We are listing below what we believe to be the best distinct colors in Spanish and Dutch Irises, as well as the hybrid form, Wedgwood. They are excellent for growing under glass and may be grown in the garden also. When planted outdoors they should be covered with a heavy mulch and the bulbs planted in a well-drained border, about 5 inches deep.

- A. L. Koster.** (Dutch.) Splendid pure white. Fine, strong grower. \$1 per doz., \$8 per 100, \$75 per 1,000.
- Anton Mauve.** (Dutch.) A uniform soft blue; good-sized flowers. \$1.25 per doz., \$9 per 100, \$85 per 1,000.
- Cajanus.** (Spanish.) Among the very few of the Spanish Irises which have not been superseded by the Dutch. It is a uniform yellow. \$1.25 per doz., \$9 per 100, \$85 per 1,000.
- D. Haring.** (Dutch.) Considered one of the finest white varieties. \$1.25 per doz., \$9 per 100, \$85 per 1,000.
- E. B. Garnier.** (Dutch.) Standards and falls a uniform deep blue. Similar to Imperator. \$1.25 per doz., \$9 per 100, \$85 per 1,000.
- Frans Hals.** (Dutch.) Standards pale blue; falls cream-yellow with orange blotch. \$1.25 per doz., \$9 per 100, \$85 per 1,000.
- Golden Glory.** (Dutch.) Standards golden yellow; falls darker. The dark yellow Yellow Queen. Very fine variety. \$1.50 per doz., \$10 per 100, \$95 per 1,000.
- Hobbema.** (Dutch.) Standards light blue; falls white, yellow blotch. \$1.25 per doz., \$9 per 100, \$85 per 1,000.
- Imperator.** (Dutch.) This and Wedgwood are used for indoor growing. A rich dark blue. Excellent for the garden border and for cutting. \$1 per doz., \$8 per 100, \$75 per 1,000.
- J. W. de Wilde.** (Dutch.) Standards yellow; falls golden yellow, similar to Yellow Queen. \$1.25 per doz., \$9 per 100, \$85 per 1,000.
- King of the Whites.** (Spanish.) An exceptionally good white variety. \$1 per doz., \$8 per 100, \$75 per 1,000.
- S. Rombout.** (Dutch.) One of the finest of the very dark blue Dutch Irises. Flowers good size, borne on strong stems. \$1.25 per doz., \$9 per 100, \$85 per 1,000.
- Wedgwood.** A seedling of Tingitiana, and one of the earliest to bloom. Standards blue; falls beautiful pale blue, with a yellow blotch. Large flowers, borne on tall, strong spikes. One of the best forcing Irises. \$3.50 per doz., \$25 per 100.
- Yellow Queen.** (Dutch.) Considered one of the finest, if not the finest, for early forcing. Standards an even tone of pale yellow; falls golden yellow. \$1.25 per doz., \$9 per 100, \$85 per 1,000.



Snowdrops



Ranunculus



Scilla nutans

IXIAS

The Ixia is a beautiful little winter-flowering bulb, with long, slender, graceful spikes of bloom. The colors are rich, varied and beautiful, the center always differing in color from the other parts of the flower, so that the blossoms, expanding in the sun's rays, present a picture of gorgeous beauty. Very desirable for pots.

	Doz.	100
Althæa. Large; white, with purplish carmine eye.....	\$0 85	\$6 00
Aurantiaca major. Golden yellow, large dark eye....	85	6 00
Craterioides major. Bright scarlet; very early.....	1 30	10 00
Hubert. Deep maroon; very beautiful.....	70	5 00
Mozart. Pink; lovely color	85	6 00
Finest Mixed	50	3 50

LEUCOJUM VERNUM (Spring Snowflake)

This pretty bulbous plant is similar to the snowdrop but of larger, stronger, and more attractive habit. In rich soil it grows to a height of 8 inches and produces, in late April, beautiful large white flowers, tipped with green, that are excellent for cutting. When once planted they take care of themselves, and should be in all hardy plant collections. They also do well in pots. \$1 per doz., \$7 per 100.

OXALIS

An unrivaled winter-flowering pot-plant of the easiest culture, succeeding with everybody

This is one of the finest flowering plants for pot culture that we have ever seen. It is such a strong, luxuriant grower that five or six bulbs will be sufficient for a 6 or 8-inch pot. Place in a dark, cool position for several days to root thoroughly, and remove to a sunny situation in the window or conservatory in a temperature of about 60 degrees Fahr., and the great profusion of bloom produced in uninterrupted abundance for weeks will astonish and delight you.

Large-flowering. We have a very fine strain of these Oxalis. Flowers are large, and they may be had in blossom, by successional plantings, from October until May. We have four colors—Yellow, Pink, White, and Lavender. 50 cts. per doz., \$3.50 per 100.

RANUNCULUS

The bulbs of Ranunculus resemble tiny clumps of dahlia roots. They look as much like spiders as anything. The flowers are extremely double, almost globular, regular in outline, often exceed 2 inches in diameter, and are to be had in all the colors except blue. The colors are bright, clear, and pure.

French Mixed. We offer a mixture of all colors of the French Ranunculus at \$1 per doz., \$7 per 100, \$65 per 1,000.

SNOWDROPS

These elegant little flowers, the first to open in spring, should be found in every garden, not only because they are the earliest spring flowers, but because they are one of the loveliest.

	Doz.	100	1,000
Single Snowdrops. Selected bulbs.....	\$0 70	\$5 00	\$48 00
Double. Selected bulbs.....	80	6 00	58 00

SCILLA campanulata (Wood Hyacinth)

Bears spikes, 15 inches high, of bell-like flowers, during early May. Plant 5 or 6 inches deep in shady situations. Very effective for borders; will grow under fir or pine trees.

Alba maxima. Clear white, with very fine, large bells. 75 cts. per doz., \$5 per 100, \$45 per 1,000.

Blue Queen. Erect spikes of porcelain-blue flowers; strong grower. 75 cts. per doz., \$5 per 100, \$45 per 1,000.

Excelsior. Bright deep blue, with large bells. 75 cts. per doz., \$5 per 100, \$45 per 1,000.

Rose Queen. Bells of soft lilac-rose; very pretty. \$1 per doz., \$7.50 per 100, \$70 per 1,000.

Scilla sibirica (Siberian Squill)

Spikes 3 to 4 inches high, of small, drooping, bell-like flowers. Fine for massing in borders or naturalizing. Plant 3 to 4 inches deep. Blooms in April.

Blue. Splendid for massing. Jumbo bulbs, 80 cts. per doz., \$6 per 100, \$58 per 1,000.

White. A variety sometimes used for interspersing with the blue sorts. 80 cts. per doz., \$6 per 100, \$58 per 1,000.

Scilla nutans (English Bluebell)

The flowers of this lovely Scilla are similar in type to *S. campanulata* listed opposite, but spikes are not as tall and are more arching in character. Visitors to the English countryside during daffodil time will doubtless remember this pretty flower which is a native of their woodlands and blooms the same time as the daffodils. 50 cts. per doz., \$4 per 100, \$30 per 1,000, \$250 per 10,000.

SPIREA (November delivery)

Gladstone. Large spikes of pure white flowers, borne on strong stems 18 inches high.

Gloria. A recent introduction that is conspicuously beautiful with its dense, feathery plumes of brilliant dark pink flowers.

Queen Alexandra. A popular variety on the order of Gladstone, but of a pale pink color.

Peach Blossom. A very lovely shade of peach-blossom pink. A very free-flowering variety.

Strong Clumps of any of the above 4 varieties, \$1 each, \$10 per doz., \$75 per 100

TRILLIUM

Grandiflorum. This beautiful native woodland plant grows from 8 to 12 inches high and produces large white flowers, turning lilac with age, frequently 2 to 2½ inches long by 2 inches wide. It is becoming extremely popular for garden planting. We offer large, strong clumps at \$2 per doz., \$15 per 100.

Stylosum. Similar to the above but somewhat smaller and has pink flowers. \$2 per doz., \$15 per 100.

TRITONIA CROCATATA

This beautiful Cape Bulb is produced in California and is usually treated as a greenhouse bulb and handled like the freesia, which it somewhat resembles in its foliage. The lively orange-red flowers are borne on slender stems in racemes and are about 2 inches across. Splendid pot-plant. 80 cts. per doz., \$6 per 100, \$50 per 1,000.

Two Popular Hardy Perennials for Fall Planting

We offer, below, two of the most popular hardy perennial plants for fall planting. These are grown in our own nurseries and all orders placed at this time will be delivered at the proper planting-time this fall.

HARDY PHLOX

CULTURE.—Hardy Phlox may be planted in spring or fall; a mulch of old manure thrown around the roots will be of benefit to the plants. Phlox should be set out 18 inches apart, and if kept well watered will produce both individual blossoms and heads of bloom far larger than otherwise, and amply repay the extra trouble. To procure best effects, plants should be massed in from six to twelve clumps of each variety

Superb Hardy Phlox

Our plants are choice divisions from field-grown plants which we have found to give excellent satisfaction.

Albion. A vigorous-growing variety; pure white, with a pale pink eye.

Bridesmaid. Pure white with large crimson center.

Commander. Crimson-red with darker eye.

Elizabeth Campbell. Large; soft pink. 40 cts. each, \$4 per doz., \$30 per 100.

Ethel Pritchard. Beautiful mauve color. Strong grower and free bloomer.

La Vague. Florets of moderate size, borne in large trusses. Soft pink.

Maid Marion. One of the best lilac varieties; of medium height and a free bloomer.

Obergartner Reichenau. Extra-large flowers of bright rose. Strong, compact grower; extra-heavy foliage.

Rose Queen. An exceptionally fine variety. Clear rose-pink. Considered one of the best.

Rynstroom. Dark salmon-rose. Easily one of the finest Phlox of its color.

Selma. A clear, bright rose, highly relieved with a carmine-crimson eye.

Wanadis. Immense trusses with large individual florets. Delicate lilac shade with bluish purple eye.

Price of the above varieties, except Elizabeth Campbell, 20 cts. each, \$3 per doz., \$20 per 100

Early-flowering Hardy Phlox (*Phlox suffruticosa*)

Miss Lingard. A grand variety, which begins flowering after the middle of June and continues throughout the season. Large white flowers, with pale pink eye. Extensively used for cut-flowers. 30 cts. each, \$3 per doz., \$20 per 100.

HERBACEOUS PEONIES

CULTURE.—The culture of Peonies is quite simple. They require a good, deep, rich soil and an abundant supply of water during the growing season. When enriching the ground, the use of too much fresh manure near the roots should be avoided. The main point to observe is, while the ground should be well spaded and cultivated, **not to plant the roots too deep.** The roots should be planted so that the eyes are barely covered (about 1 to 2 inches). Too deep planting is the cause of shy flowering.

Size of Roots.—The roots we offer have been grown two years from root divisions. If planted during September and October these roots should become well established and give some flowers the following year.

Many of the following varieties of Peonies have received a very high rating. They are grown at our own Farmingdale Farm, on Long Island. Each variety offered has been selected by us on account of its merit.

White Shades

Alsace-Lorraine. 8.8. (Lemoine, 1906.) A late-blooming variety with pointed white petals suffused with a golden light from the stamens, giving somewhat the appearance of a water-lily. Tall and vigorous. \$2 each, \$20 per doz.

Baroness Schroeder. 9.0. (Kelway, 1889.) Immense, globular flowers with white guard petals and a soft baby-pink center, becoming pure white. One of the best white Peonies. Stems very strong and vigorous. Foliage medium green. Late midseason. \$1.50 each, \$15 per doz.

Duchesse de Nemours. 8.1. (Calot, 1856.) Cup-shaped blooms; broad guard petals of white and narrower central petals of sulphur-yellow, with oftentimes a marking of green. Early midseason. 75 cts. each, \$7.50 per doz.

Duc de Wellington. (Calot, 1859.) Large, bomb shape, with white guards and sulphur center. Medium tall; vigorous grower; free bloomer. Late. 75 cts. each, \$7.50 per doz.

Festiva Maxima. 9.3. (Mieliez, 1851.) This is probably the most widely known of all Peonies. Exceptionally large ivory-white flowers of rather feathery appearance, flecked with crimson in the center. 60 cts. each, \$6 per doz.

Primevere. 8.6. (Lemoine, 1907.) Guard petals deep creamy yellow and center petals sulphur-yellow. If not exposed to the full sun the flowers will hold a most attractive canary-yellow. Very fine. Midseason. \$2 each, \$20 per doz.

Queen Victoria. 6.8. (Hort, 1830.) An old favorite variety. A good every-day white, and, when cut, a first-rate keeper, having good substance and color. Bomb type; early midseason, being very attractive in the bud, when it has a faint blush tint. 50 cts. each, \$5 per doz.

Solange. 9.7. (Lemoine, 1907.) One of the very finest Peonies. Extra-large flowers with broad, rounded petals of such fine form that the flower does not look coarse. Petals waxy white but suffused with a reddish golden light, so that the total effect is such as may be seen on a cloud at sunset. Late midseason. \$3 each, \$30 per doz.

Pink Shades

Eduis Superba. 7.6. (Lemon, 1824.) Deep rose-pink with an occasional crimson marking. Guard petals wider than those in the center. Very early. \$1 each, \$10 per doz.

Henry Woodward. 8.8. (Richardson, 1883.) Very large, flat flowers of silvery shell-pink. Petals are pointed, giving a very pretty effect. Very late. \$2 each, \$20 per doz.

General Joffre. Large bomb-shaped flowers of a clear rose-pink. Guard petals wider than those in the center. \$2 each, \$20 per doz.

Mons. Jules Elie. Giant flowers, with flaring, wide petals and a tall, incurved, compact center. Gay, silvery pink throughout. Early. One of the finest Peonies. \$1 each, \$10 per doz.

Mme. Francois Toscanelli. (Rivière, 1911.) Anemone type. Very large flower of beautiful flesh-pink, shaded soft rose; center dark salmon-rose—a lively color. Upright grower. \$2 each, \$20 per doz.

Mme. Manchet. 8.5. (Dessert, 1913.) Very full, cup-shaped flowers of rose-pink, with a silvery tint. Tall, stiff stems. \$2 each, \$20 per doz.

Rachel. 8.3. (Lemoine, 1904.) Large, globular flowers of excellent form; fresh, soft rose, borne on strong stems. \$1.50 each, \$15 per doz.

Susanne Dessert. 7.7. (Dessert & Méchin, 1890.) Semi-rose type; midseason. Large, very full blooms in clusters; broad petals. Fine clear china-pink, silvery on the tips. Stands very well in full sun and is very showy. \$1 each, \$10 per doz.

Red Shades

Dr. H. Barnsby. 8.1. (Lemoine, 1906.) Large, very full blooms of crimson with darker shades. Free bloomer in clusters, making a good variety for garden effect. Late. \$1.50 each, \$15 per doz.

Felix Crousse. Compact, globular bloom of large size and fine form. Deep ruby-red, center shading deeper. Very choice. Midseason to late. \$1 each, \$10 per doz.

Karl Rosenfield. 8.8. (Rosenfield, 1908.) Brilliant, dark crimson; of good form and substance. Stems stiff. Medium height. One of the best in this color. \$1 each, \$10 per doz.

Marquis C. Lagergren. 7.8. (Dessert, 1911.) Brilliant cherry-red, with dark shadings. Flowers borne in clusters on stiff, upright stems, which make it an excellent variety for mass planting. Midseason. \$1.50 each, \$15 per doz.

Single Peonies

L'Etincelante. 8.4. (Dessert, 1905.) Large flowers and broad petals of brilliant carmine with a silvery border. Stems erect and vigorous. \$1 each, \$10 per doz.

Nymphé. (Dessert, 1913.) Large, flesh-colored petals, with a central tuft of golden stamens. \$1 each, \$10 per doz.

Othello. Deep rose with good stems, good laterals, and excellent for the Peony border. \$1 each, \$10 per doz.

Yeso. 7.7. (Japanese.) Guard or outside petals pure white, narrow center petals white, shaded slightly yellow, often with a carmine tip. \$1 each, \$10 per doz.



Planting of Japanese Iris



German Iris

GERMAN IRIS (*Iris germanica*)

We list nineteen of the best modern varieties, also the Siberian. This variety does not belong to the Germanica family. It is the most delicate and elegant of all the small-flowered Irises. The foliage is narrow, grassy-like, with tall stems; the flowers resemble somewhat, in form, the bulbous Iris listed in our catalogue as Spanish. It is splendid as a cut-flower and a very free-blooming variety.

- AMBASSADEUR.** A new variety of splendid merit. Falls of rosy lilac; standards of rich reddish purple, shaded darker. **\$1 each, \$10 per doz.**
- BALLERINE.** Standards pale blue-violet; falls wisteria-violet, veined red-brown; lemon-yellow beard. **\$1 each, \$10 per doz.**
- CLUNY.** A tall-growing variety with standards of light lavender; falls darker lavender, shading to blue, with purple-brown markings at the base. **\$1 each, \$10 per doz.**
- FAIRY.** Standards and falls white, delicately bordered and suffused soft blue. Very beautiful. **30 cts. each, \$3 per doz., \$20 per 100.**
- GRACCHUS.** Standards clear yellow; falls crimson, reticulated white. **30 cts. each, \$3 per doz., \$20 per 100.**
- GREVIN.** A tall-growing, rich red-purple Iris. Its height makes it an outstanding variety for the garden. **75 cts. each, \$7.50 per doz.**
- KHEDIVE.** Standards beautiful soft lavender, falls white, veined brown. **30 cts. each, \$3 per doz., \$20 per 100.**
- LENT A. WILLIAMSON.** Standards lavender-violet; falls royal purple. Large flowers. **60 cts. each, \$6 per doz., \$40 per 100.**
- MEDRANO.** Recommended very highly. The standards are red-copper with a suggestion of violet, with falls of dark crimson-purple, flaked buff and lavender. **75 cts. each, \$7.50 per doz.**
- MAGNIFICA.** Standards light violet-blue; falls long, deep red-violet, with brown markings on light ground at the haft; orange beard. Huge size and striking color. **\$1 each, \$10 per doz.**

- MOTHER OF PEARL.** A uniform soft lavender with a faint creamy undertone. Large flowers of exceptional substance and perfect form. The finest new Iris. **\$1 each, \$10 per doz., \$60 per 100.**
- PALLIDA, ALBERT VICTOR.** Standards soft blue, falls beautiful lavender. **30 cts. each, \$3 per doz., \$20 per 100.**
- PERFECTION.** Standards light blue; falls dark violet. A very free-flowering variety and an excellent one for the garden. **40 cts. each, \$4 per doz., \$30 per 100.**
- PRINCESS VICTORIA LOUISE.** Standards sulphur-yellow, falls rich plum, bordered cream. **30 cts. each, \$3 per doz., \$20 per 100.**
- QUAKER LADY.** Standards are a smoky lavender with yellow shadings; falls blue and gold. **35 cts. each, \$3.50 per doz., \$25 per 100.**
- QUEEN ALEXANDRA.** Standards fawn, shot with lilac, falls bronze, yellow beard. **30 cts. each, \$3 per doz., \$20 per 100.**
- RAFFET.** Intense violet-blue in the standards, with falls of dark violet, marked white and violet. **50 cts. each, \$5 per doz.**
- RHEIN NIXE.** A variety with snowy white standards and falls of violet-blue. **35 cts. each, \$3.50 per doz., \$25 per 100.**
- SHERWIN-WRIGHT.** Fine deep yellow throughout. Perfectly hardy and excellent for landscape work. **35 cts. each, \$3.50 per doz.**
- SIBERIAN BLUE.** Clear sky-blue. While not of a German Iris type, flowers same time and is a wonderful border variety. **30 cts. each, \$3 per doz., \$20 per 100.**

JAPANESE IRIS (*Iris Kaempferi*)

The Japanese Irises usually flower after the German. They are much admired on account of their variety of color and large size. We offer twelve distinct varieties. Six-petal varieties are termed double; three-petal varieties, single.

- Azure.** Double. Immense flower of mauve-blue with a darker halo surrounding the yellow blotch at base of petals.
- Choseidan.** Double. Ruby-crimson, marked white and yellow.
- Gold Bound.** Double. Pure white. One of the best.
- Kamata.** Single. Sky-blue, veined white.
- Mahogany.** Double; dark red, shaded maroon.
- Mrs. George Stumpp.** Single. White, with a cast of blue.

- Painted Lady.** White center, blotched light purple.
- Pyramid.** Double; dark violet-blue, veined white. A very late variety.
- Red Riding Hood.** Single. Amaranth, veined and suffused white.
- Rose-Anna.** Double. Ivory-white, heavily veined ruby-red.
- Templeton.** Double. Light violet, mottled reddish pink and white.
- Violet Beauty.** Single. White and pale Hortense-violet.

Any of the above varieties, 50 cts. each, \$5 per doz., \$35 per 100

Insect and Rodent Repellent

Occasionally our patrons advise us that their bulbs are destroyed by the ravages of mice, particularly in the case of Tulips. This happens frequently in borders which are near woodland. Moles get into the borders or beds, leaving holes through which mice enter and devour the bulbs. The ravages of mice can be practically eliminated or minimized, provided the planter will not plant the bulbs too early. In this section of the country Tulip bulbs should not be planted until about Election Day; south of the Carolinas, about December 1. It should be remembered that Tulips immediately begin to make roots, provided the land is warm, and as soon as the roots are developed they have a tendency to make top-growth. More failures are due to *too* early planting rather than to faulty planting. Practically all other bulbs in our list are not affected by rodents. In the case of Tulips that are planted in the perennial border, and where the planter desires to give other plants protection, it is urged that this protection be given after the ground has frozen several inches, that is, defer covering your borders until hard frost has set in. By covering at this time you will keep the frost in, and in almost every instance, keep the mice out.

It is advisable, however, as a further protection, to use what is perhaps the best insect and rodent-repellent there is, Semesan. This is a mercurial preparation which acts as a disinfectant as well as repellent to rodents or to any insects which might affect the plant during its period of growth in the spring. It is suggested that you use a 1 per cent liquid Semesan solution, that is, 1 ounce of Semesan to 1 gallon of water, soaking the bulbs for a period of 15 minutes before planting. 2 ozs. 50 cts., lb. \$2.75, 5 lbs. \$13, 25 lbs. \$56.25. (*Not available—sent by express only.*)

Material for Bulb Fertilization and for Building up Soil Structure

SAWCO BULB FERTILIZER. The professional gardener who plants bulbs in solid blocks in borders frequently, in early October, works well-rotted manure to the depth of 1 foot into the soil, spading it over several times so as to thoroughly incorporate it, and thereby build up the soil-fertility as well as the humus-content. The average home-owner finds it difficult to get this manure to build up his soil, and unless he is well experienced the use of well-rotted horse or cow manure is dangerous, as the preparation of the ground *must* be carefully done and the manure must be entirely decayed before any bulbs are planted.

To meet this situation, we suggest the use of a high-grade bulb fertilizer which contains, in proper analysis, the plant-food for the roots of the bulbs to feed on. We offer Sawco Bulb Fertilizer in the following quantities and suggest that it be broadcasted on the land and worked in with a spade several days before the planting of the bulbs, and that it be used at the rate of 5 pounds for 100 square feet of planting area. 5 lbs. 50 cts., 10 lbs. 90 cts., 25 lbs. \$1.75, 50 lbs. \$3, 100 lbs. \$5, 500 lbs. \$20, ton \$70.

SAWCO BRAND GRANULATED PEAT FIBRE. This brand of Granulated Peat Fibre is excellent for mixing with the soil as a mulch for bulb or rose-beds. It is also particularly good for growing bulbs indoors, there being nothing better, especially in the case of liliiums. Mix one-third to one-half of peat with the soil for this purpose. Use it on bulb-beds in the spring to keep the ground cool and on rose-beds during the summer for the same reason. We offer tightly compressed, burlapped, slatted, wire-bound bales, measuring 40 x 27 x 22 inches, weighing approximately 175 pounds, containing 8 to 9 bushels, or enough to cover 100 square feet to a depth of 2½ inches, at \$5 per bale; in lots of 5 bales at \$4 per bale; in lots of 10 bales at \$3.50 per bale. (Write for prices on carload lots.) Small sample bale (size about 20 pounds) \$1.50 each.

STUMPP & WALTER COMPANY

30-32 Barclay Street

NEW YORK CITY

Stumpp & Walter Co
30-32 Barclay St.
New York, N.Y.

P. O. Box 165, City Hall Station.



Six Fine Daffodils

	Each	Doz.	100
1 Sir Watkin.....	\$0 15	\$1 50	\$12 00
2 King Alfred	35	3 50	25 00
3 Horace	15	1 25	10 00
4 Queen of the North	15	1 25	10 00
5 Spring Glory	35	3 50	25 00
6 Conspicuous	15	1 25	10 00





Tulips in front of vase are Louis XIV

Bulbs for
1930

Stumpp & Walter Co
NEW YORK CITY

Advance
Offering