

Historic, archived document

Do not assume content reflects current scientific knowledge, policies, or practices.

UPTON GARDENS
JAN 8 1 1935
S. J. DEPARTMENT OF AGRICULTURE

Established 1916
"Twenty Years A-Growing"

Upton Gardens
Mrs G. R. Marriage
Colorado Springs, Colorado

HARDY PLANTS

"Hardy as Pikes Peak"

We endeavor to supply first class plants true to name, field grown of the most suitable size for immediate results. If they are not satisfactory, please return them at once when we will gladly refund your money.

Since culture, soil, and weather determine largely success or failure in the growing of plants we assume no responsibility after stock is accepted.

Prices include local delivery. They do not include shipping charges, nor planting. This price list cancels all previous quotations.

We offer first class service in:

PLANTING
PRUNING
MAKING LAWNS
CONSTRUCTING ROCK GARDENS
BUILDING LILY POOLS
SPRAYING

We are glad to help our customers with cultural directions. Consult us about your Garden problems. To see plants growing is the most satisfactory way to select them. Ours are labeled and we are pleased to have our gardens used by any who "want to know." An attendant will be available to answer questions.

Visitors are welcome to our Gardens at all times.

Business hours are: 8 a. m. to 5 p. m., Week days.
8 a. m. to 12 m., Saturdays.
Closed Sundays.

NOVELTIES

Asters—New dwarf varieties.
Hybridus luteus, "Solidaster."
Chrysanthemums—Korean dwarf.
Buddleia—Fortune. Splendid cut flower.
Gaillardia—Sun God.
Aquilegia clematiflora
Rose, Token

A FEW OF OUR SPECIALTIES

IRISES. The best new ones each year and the best old ones, too. Ask for Iris list.

PEONIES of high rating at moderate prices.

EVERGREENS. First quality, well-rooted trees only.

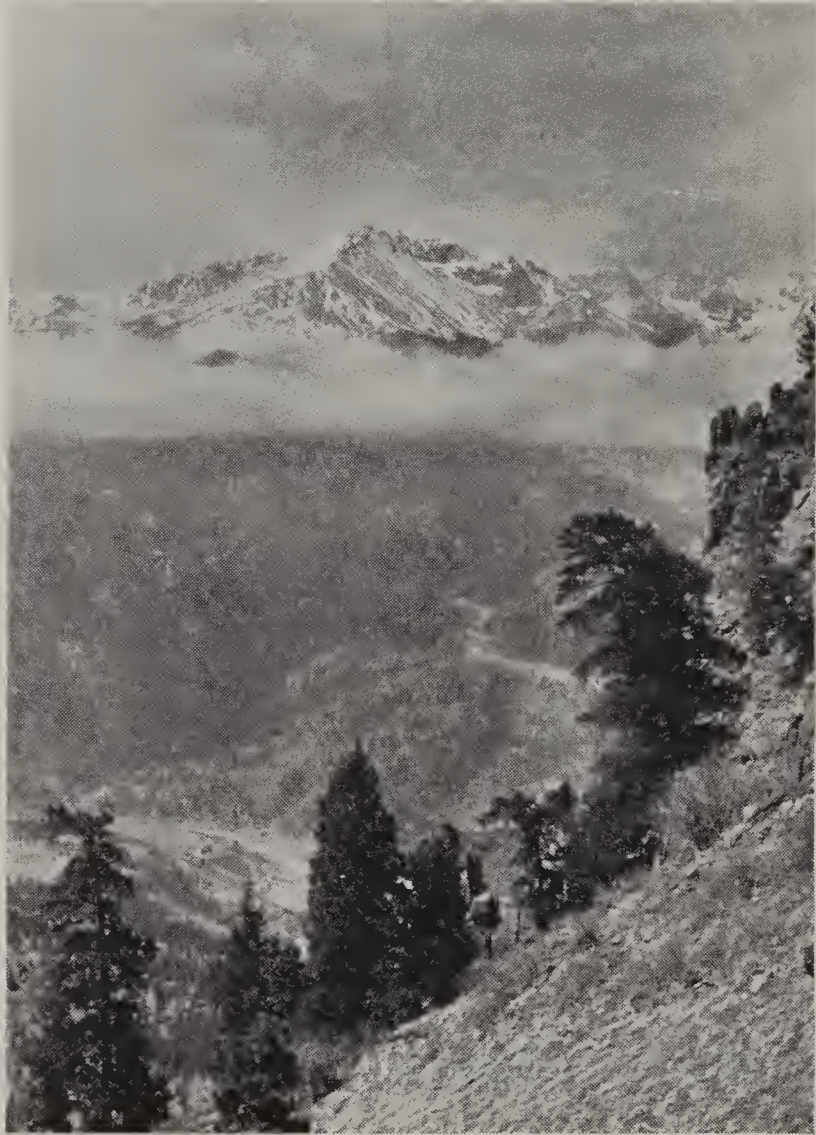
ROSES. Sixty varieties, all of proved adaptability to Colorado.

NATIVE COLORADO PLANTS. Especially Alpines and Desert Plants. Ask for our separate list of these.

SPRING FLOWERING BULBS. Ask for list. It's a good one.

ROCK GARDEN PLANTS. Acclimated, hardy, field-grown.

SEEDS of native Colorado plants, Colorado evergreens, perennials and annuals, imported novelties.

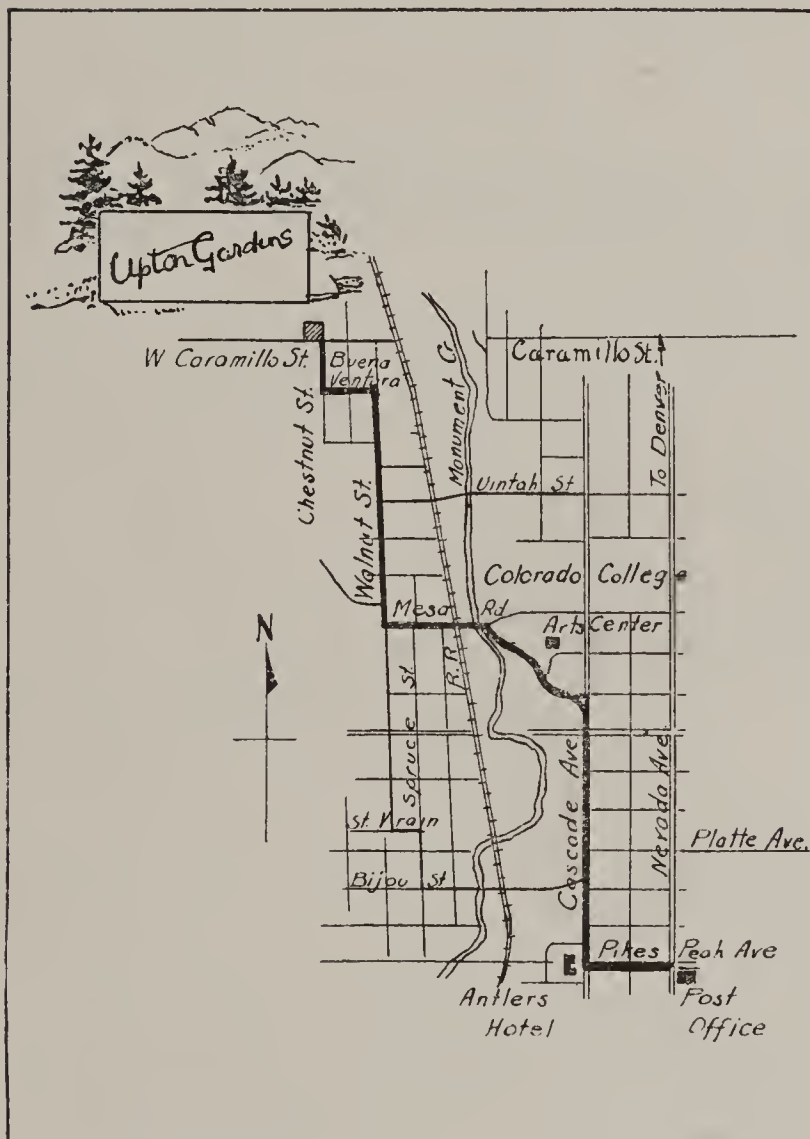


PIKES PEAK
Gardens above the clouds

UPTON GARDENS

COLORADO SPRINGS, COLORADO

HARDY PERENNIALS
TREES
EVERGREENS
SHRUBS
ROSES



To reach Upton Gardens :

Turn west from Cascade Avenue on Mesa Road. Cross Railroad and keep west to Walnut Street. Turn north here and follow signs to our office

West Caramillo St. at Chestnut St.

Telephone Main 2685

HARDY PERENNIALS

Field grown plants of most suitable size for immediate results.

PRICES:

10 Plants of one variety.....	\$ 3.00
3 Plants of one variety.....	1.00
Single plants.....	.50
10 Assorted plants, all different.....	3.50
10 Plants each of 10 varieties.....	25.00
100 Plants of one or of two varieties.....	20.00

Except where otherwise noted.

Plants marked * are suitable for Rock Gardens.

ACHILLEA, Yarrow.

filipendula. Bright yellow, dense flat heads. 3 ft. Late.

millefolium roseum. Pink. 2 ft. July to September.

Perry's White. Fuzzy double rosettes. 2 ft. All summer.

**tomentosa*. Yellow. 6 inches.

ACONITUM, Monkshood.

anthora. Pale yellow spikes. 18 inches. Summer.

autumnale. Dark blue spikes. 5 ft. Autumn.

napellus. Deep blue, single spikes. 3 to 4 ft.

Spark's Variety. Deep blue. Branched spikes. 4 ft. Late.

AEGOPODIUM *podagrarium variegatum*. Almost as insidious as Buttercups. Variegated leaf, ground cover.

AGROSTEMMA, Rose Campion.

flos jovis. Rose-pink clusters; gray foliage. 1 ft. July.

hybrida Walkeri. Rosy-purple. 18 inches.

For Color Schemes ask about our Garden Planning

*AJUGA, Bugle.

Genevensis. Blue-flowered ground cover. 4 inches.

reptans. Deep purplish-blue, good creeping ground cover. \$2.00 per doz.

*ALLIUM, Flowering Onion.

sibericum. Floriferous, rosy-pink. 10 inches.

thibeticum. Erect lilac flowers on 12-inch stems. Late.

also varieties: *angulosum*, *bacralense*, *cyaneum*, *macrostemma*, *montanum*, *namoensis*, *nutans*, *odorum*, *ostrowskianum*, *spaerocephalum*.

ALTHEA ROSEA, Hollyhock.

Double flowering: Black, Colorado Sunset, Newport Pink, Red, White, and Yellow.

Single, mixed colors. \$1.00 dozen.

*ALYSSUM, Basket of Gold.

argentum. Yellow; silvery foliage. 8 inches. Spring.

saxatile compactum. Yellow clusters. 10 inches. June.

saxatile citrinum. Paler yellow. 8 inches.

serpyllifolium. Yellow; the neatest of the lot. 4 inches.

ANCHUSA, Aikanet.

Barrelieri. Deep blue, bushy habit. 2 ft. June.

Feltham Pride. Tidy edition of Dropmore. 2½ ft. June.

Italica dropmore. Good clear blue, coarse. 4 ft. June.

**myosotidiflora*. Forget-me-not blue; foliage good. 1½ ft.

**Anchusa Dropmore* makes a glorious noise in blue.
It needs elbow room

ANEMONE, Windflower.

**hepatica triloba*, Wood Anemone. Blue, very early spring.

**hupehensis*. Rosy mauve. 1 ft.

Japonica, Japanese Windflower.

Queen Charlotte. Rose-pink, semi-double. 3 ft. Late autumn.

Whirlwind. Double, pure white, good. 3 ft. Late autumn.

**pulsatilla*. Rosy-violet, crocus-like flowers. Early spring.

Mrs. Van der Elst. Soft rose pink.

rubra. Deep reddish purple.

Japanese Anemones are splendid, but they do not
like to be disturbed

***ANDROSACE**, Rock Jasmine.

villosa. White flowers; woolly rosettes.

sarmentosa. Lovely silver-pink, above fuzzy gray rosettes. 4 inches.

ANTHEMIS, Yellow Marguerite.

tinctoria kelwayii. Yellow daisy. 1½ ft. All summer.

AQUILEGIA, Columbine .

**alpina*. Rich blue; short spurs. 9 inches.

**canadensis*. Coral red and yellow. 18 inches.

chrysantha. Yellow, continuous bloomer. 2½ ft.

clematiflora. A non-spurred, large-flowered Columbine.

coerulea. Lavender blue and white, long spurs; the loveliest of the lot. 3 ft.

jucunda, Siberian Columbine. Powder blue and white.

longissima. Soft yellow; 5-inch spurs.

Rainbow Blend. Fine mixture of all colors. 2 ft.

**saximontana*. Alpine miniature; rare.

***ARABIS**, Rock Cress.

alpina. White flowers, easy grower. 8 in. Early spring.

***ARENARIA**, Sandwort.

grandiflora. Large white flowers, trailing habit. 4 inches.

verna caespitosa. Tiny white stars on dense green moss-like mats.
Lovely in the rock garden.

montana. Another hardy one.

ARMERIA, Thrift.

formosa. Shell pink heads; 2 ft. stems.

**lauchiana*. Deep rosy pink. 4 to 6 inches.

ARTEMISIA, Sagebrush.

abrotanum, Southernwood. Silver gray, highly aromatic foliage.

frigida. Native Mountain Sage. Finely cut silver foliage, fragrant.

lactiflora, Lace Flower. Creamy white panicles, lacy foliage. 5 ft.

Artemisia frigida is a good foliage foil, kept shorn

ASCLEPIAS, Butterfly Weed.

tuberosa. Flat lacy heads of glowing orange 2 ft. July and August.

ASTER, Hardy, Michaelmas Daisy.

**alpinus*. Violet-blue daisies, neat habit. 10 inches.

amellus, Beauty of Ronsdorf. Large lilac-rose. 2 ft.

amellus, King George. Bluish-violet flowers.

Climax. Lavender-blue, free bloomer. 4½ ft.

Climax White. Clear white.

ASTER—Continued

- ***Dumosus Hybrids**, Dwarf Border Asters. Compact. 10 inches. September and October.
 Countess of Dudley, clear pink.
 Lady Henry Maddocks, pale pink.
 Marjorie, rose-pink.
 Nancy, pale lavender.
 Ronald, lilac pink.
 Snowsprite, white.
 Victor, pale lavender-blue.
frikarti. Lavender-blue, all summer bloom.
hybridus luteus, Solidaster. Like a yellow gypsophila. R. H. S. award of merit. 2 ft.
Lil Fardell. Brilliant purple-pink. 4 ft.
Pink Button. Round pink button in bud. 3 ft.
Robert Parker. Navy blue. 4 to 5 ft.
Star of Wartburg. One of the best new asters.
Sub-coeruleus, Himalayan Daisy. Large lavender-blue, yellow center. 1½ ft. \$2.00 per dozen.

The new dwarf Asters take the sag out of the late
summer garden

ASTILBE, Meadow Sweet.

- Gladstone**. White. 18 in. July.
Gloria. Soft rose-pink. 2 ft.
Gloria atrococcinea. Brilliant dark pink.
filipendula fl. pl. White flowers; fern-like foliage.
salland. Feathery plumes of raspberry-pink.
 Mixed colors.

*AUBRIETIA, Purple Rock Cress.

- graeca**. Lilac-blue. A gem for crevices of rocks or rock walls.
hybrida grandiflora. Large flowering hybrids.

BABY' BREATH. See Gypsophila, page 9.

BAPTISIA, False-Indigo.

- Australis**. Intense blue lupine-like spikes. 3 to 4 ft.

BELAMCANDA chinensis, Blackberry Lily. Orange spotted brown. 3 ft.

***BELLIS perennis**, Double English Daisy. Hardiness doubtful. 4 inches.

BLEEDING HEART. See Dicentra, page 7.

BOCCONIA, Plume Poppy.

- cordata**. Creamy white panicles. 6 to 8 ft. July and August.

BOLTONIA, Bolton's Starwort.

- asteroides**. White. 5 ft.
latisquama Pink, tinged lavender.

***BOYKINIA Jamesii**. Pink, native, excellent rock garden novelty.

BUPHTHALMUM salicifolium, Ox-Eye. Yellow flowers. 2 ft. Summer.

CACTUS. See our catalogue of "Rocky Mountain Rarities," also page 35.

CAMPANULA, Bellflower.

- ***carpatica**, Carpathian Harebell. Clear blue. 8 inches. All summer.
 ***carpatica alba**. Pure white form of above.
 ***glomerata acaulis**. Large clusters of rich violet. 4 inches.
 ***glomerata dahurica**. Close purple heads. 18 inches. July.
 ***linifolia**. A delicate rotundifolia.
persicifolia grandiflora. Blue or white. 2 ft.
persicifolia moerheimi. Large double white.
 ***portenschlagiana**. Lavender-blue. Enjoys spreading over rocks.
 ***pusilla**. Miniature blue; also white.
pyramidalis. Tall spikes of blue star-shaped flowers. 4 ft.
 ***rotundifolia**, Harebell. White or blue. 1 ft. June to September.
 ***turbinata**. A dwarfed improved carpatica. 6 inches.
 ***turbinata alba**. White.

***CANDYTUFT.** See Iberis, page 10.

CARNATIONS. Hardy border varieties.

Sutton's Grenadin Scarlet.

Sutton's Choice Mixed.

*Vienna Dwarf Mixed.

CENTAUREA.

macrocephala. Golden yellow thistle-like flowers. 3 ft.

montana. Blue, perennial cornflower.

CENTRANTHUS, Valerian Garden Heliotrope.

ruber. Showy heads, pink to red. 2 ft.

***CERASTIUM,** Snow in Summer.

arvense. Green carpet, white flowers. 4 inches.

tomentosum. Myriads of snow-white flowers above silvery-gray foliage. 6 inches. \$2.00 per dozen.

Have you tried *Cerastium tomentosum* as a ribbon border?
Shorn and edged it is satisfactory—and permanent

CHEIRANTHUS, Wallflower.

allioni. Fragrant rich orange, treat as biennial. Spring.

Golden Gem. Bright yellow, biennial.

linifolium. Lilac-mauve, biennial. 10 inches. Spring.

CHRYSANTHEMUMS, Hardy.

adironda. Bronze yellow button, coppery center. Early.

Aladdin. Warm coppery-bronze, double. Early.

Alice Howell. Orange-bronze, semi-double.

Astrid. Shell pink, forms compact bush; extremely hardy.

Aunt Mary. Pink.

Azaleamum (Amelia). Mauve-pink. One of the earliest and best.

12 inches.

Barbara Cummings. Yellow. Early.

Carrie. Clear yellow.

Cerise Pink. Button form.

Early Bronze. Excellent bronze pompon. September.

Firebird. Good red. Large loose pompon.

Firelight. Red tipped copper.

Glory of Seven Oaks. Orange-yellow.

Golden Lace. Good single yellow.

Indian. Coppery-red, late flowering.

Kadar. Bronze button.

Korean Hybrids. New hardy early varieties, 2½ ft. Early September and October.

Daphne. Pink with lilac-rose.

Diana. Chateay rose-pink.

Ceres. Gold and chamois.

Juno. Dwarf, compact; copper-red.

Mars. Deep amaranth red.

Mercury. Bronze-red.

Sappho. Compact; clear yellow.

Apollo. Shades of bronze-red, old gold and salmon.

Lady Astor. Coppery-red button.

Mrs. Phillips. Single pink with yellow center.

Mawii. Charming pink, dainty silvery foliage. 1 ft.

Mitzi. Yellow button.

Normandie. Creamy white. Early.

Nellie Kleris. Clear pink pompon.

Ouray. Bronze.

Pink Perfection. Tall deep pink.

Provence. Early dwarf pink.

Tango. Rich ruddy bronze.

White Doty. White pompon.

Yellow. Early.

Divide Chrysanthemums and Shasta Daisies if you would
keep them blooming every year

- CHRYSANTHEMUM maximum**, Shasta Daisy.
Conqueror. Large white; robust.
Glory of Wayside. Abundant flowers in May.
King Edward VII. Large flowers of good substance. \$2.00 per dozen
Mrs. C. Lowthain Bell. Late summer.
Supreme. The largest and best. 2 ft.
Victor. Good pure white.
- CHRYSANTHEMUM parthenium**, Feverfew. Clusters of small white daisies, strong scent. 18 inches.
- CLEMATIS**, Dwarf, Shrubby.
Davidiana. Lavender-blue flower; good foliage. 18 to 24 inches. August and September.
integrifolia. Drooping blue bell-like flowers. 18 inches.
recta grandiflora. Clusters of pure white; erect. 2 to 2½ ft. June and July.
Climbing. See vines, page 30.
Native Varieties. See our catalogue, "Rocky Mountain Rarities."
- COLUMBINE**. See *Aquilegia*, page 3.
- ***CONVALLARIA**, Lily of Valley. Clumps 50 cents each.
majalis. Large flowered. 6 inches. Spring.
- CORNUS canadensis**. Suggests a small 4-petal trillium.
- CORREOPSIS**, Tickseed.
grandiflora. Large bright yellow; good cut flower. 2 ft.
- ***CORYDALIS**.
cheilanthifolia. Spikes of creamy yellow; lacy foliage. 12 inches.
sempervirens. Pink tipped with yellow.
- CRUCIANELLA stylosa**. Pink trailer. 10 inches.
- ***CYPRIPEDIUM**, Lady's Slipper.
parviflorum. Butter-colored moccasin-shaped blobs. 10 inches. Spring.
spectabile. Showy Lady's Slipper, rose-pink flowers. 18 inches.
- DELPHINIUM**, Larkspur.
Blackmore and Langdon Hybrids. Very large double flowers. \$1.00 each.
Gold Medal Hybrids. Long spikes of exquisite flowers. Turquoise, lavender, pink, and indigo.
belladonna. Clear turquoise-blue, branching.
bellamosum. Dark blue, branching.
Blue Gem. Bright blue, dwarf, good.
Cliveden Beauty. A larger and taller belladonna.
***chnensis**. Blue Butterfly. Deep blue. 12 to 18 inches.
***chinensis coelestina**. Porcelain blue. 12 inches.
***chinensis**, Tom Thumb. Intense blue dwarf. 8 to 10 inches.
Mixed Hybrids.
- ***DIANTHUS**, Pinks.
Alwoodii. A good hardy pink. Single and double. 10 inches.
Alwoodii alpinus. One of the best of the pinks. 4 to 6 inches. July to August.
arvenensis. Pink flowers, gray foliage. 4 inches.
barbatus, Sweet William.
alpinus. Dwarf alpine type; mixed colors. 4 to 6 inches.
Newport Pink. Warm pink, floriferous.
Scarlet Beauty.
Sutton's Mixed Shades.

DIANTHUS—Continued

- caesius grandiflorus*, Cheddar Pink. Rose colored; fragrant. 8 inches.
caucasiensis. Low cushion, pink and white.
deltoides, Maiden Pink.
deltoides albus. White form of above.
cresta. Rich red. 3 to 4 inches.
glacialis. Bright rose-pink, a neat alpine. 3 inches.
laciniatus vesuvius. Rich glowing scarlet; biennial.
Loveliness. Fringed delicate lavender-pink. 8 inches.
plumarius, Garden or Grass Pink.
Hyland Queen. Single, bright crimson, tinged salmon; good bloomer. 10 inches.
King of the Blacks. Dark red.
Mrs. Sinkins. Large pure white double, very fragrant. 1 ft.
Scotch Pink. Single hybrids. Clove scented.
neglectus. A deep rose miniature gem.
superbus. Fringed, deep lavender, fragrant. 10 inches.
speciosus. Pale rose-purple. 12 inches.
Mixed Hybrids.

“God made all creeping things,” but if they infest your
garden ask for our spray expert

DICENTRA, Bleeding Heart.

- **cucullaria*, Dutchman's Breeches. Dainty creamy-white flowers, finely cut foliage. 6 inches.
**eximia*, Plumy Bleeding Heart. Showy racemes of rose-pink. 10 inches. April to July.
spectabilis. Pink flowers, heart shaped. 12 to 15 inches.

DICTAMUS.

- fraxinella alba*. Showy spikes of white. 2 ft. Summer.
fraxinella. Rosy pink flowers.

***DRABA**.

- aizoon*. Flowers sulphur yellow. 6 inches.
laxa. White. 6 to 8 inches.

DIGITALIS, Foxglove. Prefers a moist climate.

- gloxiniaeflora*. Spotted flowers, mixed. 4 ft.
laciniata. Pale yellow flowers.

DUTCHMAN'S BREECHES. See *Dicentra*.**ECHINACEA**, Coneflowers. See *Rudbeckia*.**ECHINOPS**.

- humilis*. Bright blue heads; semi-dwarf. 2½ to 3 ft. August.
ritro. Globular blue heads; thistle-like. 4 to 5 ft. August.

***EDELWEISS**. See *Leontopodium*, page 10.**ENGLISH DAISY**. See *Bellis perennis*, page 4.**ERIGERON**, Fleabane.

- Mesa grande*. Large violet-blue daisies. 2 ft. Autumn.
Pink Pearl. Long seasons of bloom.
macrantha. Clusters of clear lavender-blue. June to September.

ERYNGIUM, Sea Holly.

- amethystinum*. True blue thistle. July and August.
planum. Branching heads of steel blue. 3 ft.

***ERYSIMUM**. See *Chieranthus*, page 5.**EUPATORIUM ageratoides**. White. September.**EUPATORIUM coelestinum**. Purple. September.

***EUPHORBIA**, Milkwort.

cyparissias. Cypress Spurge. Yellow flowers; attractive cypress-like foliage. 1 ft.

myrsinites. Blue-gray foliage, attractive spiral form; good foliage.

polychroma (*epithymoides*). Showy yellow bracts; good foliage. Early spring. 1 ft.

FERNS

adiantum pedatum, Hardy Maiden-Hair Fern.

aspidium spinulosum. A good broad-leaved fern.

asplenium felix femina, Lady Fern. One of the best.

dicksonia punctilobula. Hayscented Fern.

dryopteris goldiana, Goldies Wood Fern.

**felix fragilis*. Dwarf, 6 to 8 inches.

onoclea struthiopteris, Ostrich Fern. Long graceful fronds.

osmunda claytoniana, Interrupted Fern.

osmunda regalis, Royal Fern. Large fronds.

polystichium acrostichoides, Christmas Fern.

pteridium aquilinum, Brake Fern.

**woodsia scopulina*. Dry Climate Fern. 6 inches. Native.

FEVERFEW. See *Chrysanthemum parthenium*, page 6.

FOXGLOVE. See *Digitalis*, page 7.

FUNKIA, Plantain Lily.

coerulea. Muddy purple flowers, but good clean foliage; excellent for shady corners. 1 ft.

sub-cordata grandiflora. White flowers; good in shade.

**Get your garden on paper before you try to put it on
the ground**

GAILLARDIA, Blanket Flower.

Bremen. Coppery-scarlet.

Dazzler. Large, deep red flowers.

Sun God. Well named.

Choicest Mixed.

***GENTIANA**, Gentian.

cruciata. Deep blue clusters. 1 ft.

Kesselringi. Blue, foliage broadly lanceolate. 4 inches.

phlogifolia. Dark blue flowers; creeping habit.

Native Varieties. See our catalogue, "Rocky Mountain Rarities."

GERANIUM, Crane'sbill.

pratense. Deep lavender-blue flowers. 2 ft.

sanguineum album. Pure white flowers; shiny leaves.

GEUM, Aven's.

Borisi. Single, scarlet. 10 inches.

Mrs. Bradshaw. Fiery orange-scarlet. 18 inches. Double.

Lady Strathedon. Double, golden yellow.

GLAUCIUM flavum, Horned Poppy. Yellow flowers; attractive gray foliage. 2 ft.

GLADIOLUS. Ask for list. Mixed varieties, 50 cents per dozen.

GOLDEN ROD. See *Solidago*, page 17.

GRASSES. Hardy Ornamental Varieties.

elymus glaucus, Lyme Grass. Stiff blue spears, good with cut flowers. 2 ft.

**festuca glauca*, Blue Fescue Grass. Tufts of narrow bluish foliage.

phalaris arundiancea variegata, Ribbon Grass. Green, striped white. 1½ ft.

GYPSOPHILA, Baby's Breath. Field grown plants.

acutifolia. Flowers pale pink. 3 ft.

cerastoides. Pretty, dwarf alpine.

Bristol Fairy. Double white; continuous bloomer when kept cut. 75 cents each.

paniculata flore pleno. The best to dry for winter. 75 cents each.

**repens*. Quantities of small white flowers. 4 inches. July and August. Good when the spring glory of the rock garden sags.

HELENIUM, Sneezewort.

autumnale rubrum. Deep bronze-red. 5 to 6 ft. September.

autumnale superbum. Broad golden yellow heads. Late summer.

pumilum magnificum. Golden yellow, floriferous, erect. 1 to 2 ft. July to October.

Riverton Beauty. Lemon-yellow with large purplish-black disks. Autumn.

Riverton Gem. Old gold, suffused wallflower-red. Excellent cut flower.

Helenium autumnale rubrum is a splendid cut flower

***HELIANTHEMUM**, Rock or Sun Rose.

Buttercup. Golden yellow, single. 8 inches.

Clara Middleton. Rich orange.

Rose Queen. Large single pink flowers.

HELIANTHUS, Hardy Sunflower.

mollis. Improved variety of Helianthus.

HELIOPSIS, Orange Sunflower.

Lemoine's Star. Large double, bright yellow.

pitcheriana. Deep chrome-yellow daisies. 3 ft. July and August.

HEMEROCALLIS, Day Lily.

calypso. The largest sulphur-yellow; a beautiful thing. 50 cents each.

citrinum. Large flowered, soft yellow. 3 ft.

Dr. Regal. Orange-yellow. Early.

flava, Lemon Lily. Sweet scented, clear yellow. 2½ ft. June.

fulva, Brown Day Lily. Coppery-orange. 3 ft. July.

George Yeld. Rich orange-scarlet; unusually large flowers. \$1 each.

hyperion. Canary-yellow, very large. New. \$1.50.

kwanso. Golden-bronze, large, double.

thunbergii. Like *flava*, but flowers in July.

HEPATICA. See Anemone, page 3.**HESPERIS matronalis**, Sweet Rocket. Fragrant spikes of lavender-purple. 2 to 3 ft. June and July.***HEUCHERA**, Coralbells.

rosamundi. Clear pink. Long blooming season. 1 ft.

sanguinea. Tiny scarlet bells on graceful stems. Neat foliage.

HIMALAYAN DAISY. See Aster sub-coeruleus, page 4.**HOLLYHOCKS**. See Althaea, page 2.**HOSTA**. See Funkia, page 8.

***HYPERICUM**, St. John's Wort.

olympicum. Showy mats of golden yellow.
reptans. Yellow; neat, lovely, trailing.

***IBERIS**, Hardy Candytuft.

gibraltarica. Showy heads of white or lavender. 10 inches. Spring.
sempervirens. Pure white; a very neat form; evergreen habit.

Come see our Irises in bloom the first week of June

IRIS. Ask for our Iris list. We specialize in Iris.

***JOHNNY-JUMP-UPS**. See Violas, page 18.

LATHYRUS, Perennial Pea. See Vines, page 30.

LAVANDULA vera, Old-Fashioned Sweet Lavender. 18 inches. July and August.

***LEONTOPODIUM**, Edelweiss.

alpinum. Star-like heads of white flannel. 8 inches.

***LEUCOCRINUM montanum**. Fragrant starry white flowers. 3 inches. Early spring.

Plant Madonna Lilies only two inches deep

LILIUM, Lilies. Hardy Garden Varieties.

calochortus gunnsonii, Mariposa Lily. \$1.50 per dozen.

candidum, Madonna Lily. Pure waxy-white. 3 ft. Plant in September. \$5.00 per dozen.

croceum, Orange Lily. Spotted black. 2 to 3 ft. June. \$4 per dozen.

regal. Creamy white tinged pink. The handsomest of the hardy lilies. Splendid substance; very fragrant. \$5.00 per dozen.

tenuifolium. Bright scarlet. A charming addition to the June garden. \$2.00 per dozen.

tigrinum splendens, Tiger Lily. Single. \$2.50 per dozen.

tigrinum splendens fl. pl. Double Tiger Lily. \$3.00 per dozen.

umbellatum. Large, tawny orange. \$4.00 per dozen.

Above prices are for largest heavy bulbs.

Regal and Madonna Lilies are exquisite with Delphiniums

LILY OF THE VALLEY. See *Convallaria*, page 6.

LIMONIUM. See *Statice*, page 17.

LINARIA, Toadflax.

**alpina*. Violet and orange on glaucous gray carpets.

dalmatica. Bright yellow, glaucous foliage. 3 ft.

purpurea. Tall slim spikes of bright rose-purple. 2 to 3 ft.

vulgaris, Butter and Eggs. A mass of continuous yellow bloom. 2 to 3 ft.

LINUM, Flax.

**flavum*. Like *arboreum*. Showy transparent yellow. Good foliage. 10 inches.

alpinum. Blue, dwarf, spreading habit.

narbonnense. Azure-blue flowers. 18 inches.

perenne. Pale blue.



Aquilegia saximontana
A charming miniature Columbine

Page 3



Aquilegia coerulea
Colorado Blue Columbine

Page 3



Page 11

Melampodium cinereum
Colorado Rock Daisy



Page 35

Cactus opuntia polyacantha
Clear yellow silky flowers

LUPINUS.

- polyphyllus, Hardy Lupines, perennial.
 albus. White. 3 ft.
 blue. Clear deep blue.
 roseus. Shades of pink.
 Sutton's Hybrids. The most beautiful of recent introduction.

Sutton's Lupins were magnificent in their Trial Grounds
last year. We saw them!

LYCHNIS, Champion or Catchfly.

- *alpina. Deep rose-pink in May. 6 inches.
 chalcidonica. Large heads of vivid scarlet.
 flos-cuculi. Rose-purple. 1 ft.
 viscaria splendens. Deep red; neat; early flowering. 8 inches.

***LYSIMACHIA, Loosestrife.**

- nummularia. Flat trailing stems, clean roundish leaves. A splendid ground cover; hardy, adaptable.

MANFRIEDA virginica. Tall spikes of green fragrant flowers from fleshy leaves.

MARIPOSA LILY. See Lilies, calochortus, page 10.

MARGUERITE. See Anthemis, page 3.

MARJORAM. See Origanum marjorana, page 12.

MATRICARIA. Splendid for the cutting garden.

- *Golden Ball. Bright yellow buttons. A 10-inch gem.
 Silver Ball. Double white. 1 ft.
 *Snowball. A dwarf silver ball. 8 inches.

***MAZUS REPTANS.** Dainty white-lipped lilac flowers. Prostrate creeper.

***MELAMPODIUM cinereum,** Colorado Rock Daisy. Clear white helianthemum-like flowers. Valuable for the sunny rock garden. June to September. 8 inches.

MENTHA, Mint.

MERTENSIA, Blue Bells.

- *coriacea (alpina). Pikes Peak Forget-Me-Not.
 sibirica. Taller and more slender than virginica.
 virginica. Clusters of rich sky-blue. Blooms at daffodil time.

MONARDA, Bergamot or Oswego Tea.

- didyma rosea. Heads of brilliant rose. 2 to 3 feet. Summer.
 didyama. Cambridge Scarlet. Showy rich crimson; free flowering.

MONKSHOOD. See Aconitum, page 2.

MICHAELMAS DAISY. See Aster, page 3.

***MYOSOTIS, Forget-Me-Not.**

- alpestris victoria. Deep blue; compact. 8 inches.
 palustris semperflorens. Clear blue forget-me-nots; continuous bloomer.

Nepeta mussini is a most satisfying plant both for masses and edgings, in bloom or out

NEPETA, Catmint.

cataria. The true Catmint. 18 inches.

**mussini*. Masses of lavender bloom against gray, compact foliage; good permanent border. 8 inches.

nervosa. Coarser and larger than *mussini*.

***OENOTHERA, Evening Primrose.**

caespitosa. Large white flowers turning to pink.

missouriensis. Brilliant yellow cups; profuse bloomer. 8 inches.

***OPHIOPOGON japonicum**. Flowers lilac to white; bright green, grass-like foliage. 10 inches. Shade.

ORIGANUM MARJORANA, Marjorum.

***ORNITHOGALUM, Star of Bethlehem.**

umbellatum. Innocent lovely star flowers, white. 6 inches. Spring.

PACHYSANDRA TERMINALIS, Japanese Spurge.

Glossy green foliage, a good ground cover. 8 inches. Shade.

Sutton's Iceland Poppies—Large flowered—made a stream of liquid sunshine last June in their Trial Grounds

PAPAVER, Poppy.

**alpinum*. Yellow, orange and salmon; dainty dwarf species.

**nudicaule*, Iceland Poppy.

Pink, white, orange and yellow. Continuous bloomer.

Sutton's Large Flowered. A superb new strain.

orientale, Oriental Poppy.

Beauty of Livermore. Deep crimson with black blotch.

Queen Alexandra. Clear salmon pink.

Orange scarlet.

Perry's white.

pilosum. Salmon pink.

If you must move Oriental Poppies, do it in
July or August

PENTSTEMON, Beardtongue.

alpinus. Lavish spikes of gentian blue. 1 to 2 ft.

angustifolia. Turquoise flowers, gray-blue foliage. 1 ft.

barbatus. Bright scarlet fire-cracker flowers. 3 to 4 feet.

campanulatus. Graceful spikes of purple. 1 ft.

**crandalli*. Brilliant with lovely upturned turquoise flowers. 4 inches.

grandiflora. Large lavender-blue flowers. A showy plant. 3 ft.

**humilis (gracilis)*. Small blue flowers on slender erect stems.

**rupicola*. Bright reddish-pink; grayish foliage. 6 inches. Evergreen.

spectabilis. Rich clear pink. 2 ft.

For other pentstemons, see our catalogue, "Rocky Mountain Rarities."

PEONIES

The number at each name indicates the rating given by the American Peony Society.

8.6	Albert Crousse.	Salmon pink; late.....	\$ 1.00
6.5	Andre Laurier.	American Beauty red.....	1.00
8.7	Auguste Dessert.	Deep pink, cup-shaped.....	1.00
8.7	Avalanche.	Pure white, creamy center.....	1.00
9.0	Baroness Schroeder.	Flesh, changing to white.....	1.00
8.7	Claire Dubois.	Satiny pink.....	1.00
8.1	Couronne d'or.	White, suffused yellow; late, fragrant.....	1.00
8.1	Duchesse de Nemours.	Sulphur white.....	1.00
9.1	E. B. Browning.	White, suffused pinkish-yellow.....	1.00
8.9	Enchantress.	Tall, creamy white.....	1.00
8.6	Eugene Verdier.	Hydrangea pink.....	1.00
8.4	Felix Crousse.	Brilliant red; fragrant.....	1.00
9.3	Festiva Maxima.	White, flecked red.....	1.00
9.1	Frances Willard.	Blush white; a prize winner.....	1.50
7.3	Frances Ortegat.	Dark crimson; golden anthers.....	1.00
8.8	Grandiflora.	Silvery pink.....	1.00
8.7	James Kelway.	Splendid rose-white; early; fragrant.....	1.00
8.9	Jubilee.	Ivory white.....	2.00
8.8	Karl Rosenfield.	Large double, rich red; vigorous grower...	1.00
9.1	Lady Alex. Duff.	Bluish-pink.....	1.00
8.5	La Perle.	Soft pink; cup-shaped.....	1.00
8.8	Laura Dessert.	Creamy white with yellowish center.....	2.00
9.0	Longfellow.	Bright red.....	1.50
8.4	Lora Dexheimer.	Rich red.....	1.00
9.9	LeCygne.	Pure white; voted the best peony.....	3.00
8.3	Marie Jacquin.	Semi-double white; the water lily peony.....	1.00
9.1	Martha Bullock.	Deep pink; large double.....	2.00
8.7	Mary Brand.	Deep clear red.....	1.00
9.0	Milton Hill.	Salmon-rose; late.....	2.00
8.6	Mme. Auguste Dessert.	Salmon-rose.....	1.00
8.5	Mme. Emil Galle.	Creamy pink.....	1.00
9.4	Mme. Jules Dessert.	Dainty pink.....	1.50
9.2	Mons. Jules Elie.	Silvery pink.....	1.00
9.3	Mrs. Edward Harding.	A fine pure white.....	2.00
9.2	Mrs. C. S. Minot.	Canary-pink.....	5.00
9.1	Myrtle Gentry.	Rose-white.....	3.00
9.2	Philippe Rivoire.	Large, well-formed, dark crimson.....	4.00
8.8	Phoebe Carey.	Lavender-pink; late.....	1.50
8.6	Primevere.	A fine creamy yellow.....	1.50
8.7	Reine Hortense.	Large, hydrangea-pink.....	1.00
9.0	Rosa Bonheur.	Soft flesh-pink.....	2.00
	Rubra Officinalis.	Brilliant crimson; early; the old "piney"..	1.00
	Rubra Officinalis Rosea.	Pink of above.....	1.00
8.8	Richard Carvel.	Red, very early.....	1.50
9.0	Sarah Bernhardt.	Fine large pink; vigorous and prolific.....	1.00
9.1	Sarah K. Thurlow.	Pearly white.....	2.50
9.7	Solange.	Yellow-pink; one of the finest.....	2.50
8.8	Souv. de Louis Bigot.	Brilliant salmon-rose-pink.....	2.00
9.8	Therese.	One of the best pinks.....	2.00
9.4	Tourangelle.	Delicate pink.....	1.50
9.3	Walter Faxon.	A very lovely salmon-rose.....	2.00
8.2	Victoire de La Marne.	Large globular red.....	1.50
	Unnamed varieties:	pink, red and white, each.....	.50

Plant Peonies in rich soil with their eyes 2½ inches underground.

All our peony divisions have at least three eyes.

Larger plants at proportionately higher prices.

JAPANESE AND SINGLES

8.4	Albiflora (The Bride).	Large white, yellow stamens.....	\$ 1.00
9.2	Ama-no-sode.	Rose-pink.....	4.00
9.2	Fuyajo.	Dark maroon, center crimson and white.....	3.00
9.3	Isani Gidui.	The best white Japanese peony.....	4.00
8.5	Mikado.	Splendid crimson; a favorite.....	1.50
8.9	Pride of Langport.	Peach-pink.....	2.50
	Tenuifolia Latifolia.	Crimson.....	1.50
	White Swan.	Large clear white.....	1.00

Plant Peonies away from trees

PHLOX decussata, Hardy Phlox.

- Africa**, Carmine red.
Baron von Dedem, Scarlet-crimson.
Beacon, Brilliant cherry-red.
Brilliant, Deep rose.
Cinderella, (Andrews.) New introduction. Soft rose-pink. 50 cents each. Withdrawn until 1938.
Colorado, (Andrews), Glowing orange-scarlet.
Columbia, New. Warm pink. 50 cents each.
Elizabeth Campbell, Salmon-pink.
Europa, White with carmine eye.
Fran Antoine Buchner, One of the best whites.
Goliath, Bright pink, dark red center.
Michael Buchner, Pale lavender.
Miss Lingard (suffruticosa type). Large white heads; shiny foliage.
Mrs. Dalrymple (suffruticosa type). White, pink eye.
Mrs. Jenkins, White; resists drouth and heat.
Mrs. W. C. Egan, Deep pink.
Osceola, (Andrews.) Rose-scarlet. 50 cents each.
Prof. Virchow, Cherry-red.
Rheinlander, Large, bright salmon-pink flowers.
Rhynstrom, Rose-pink.
Richard Wallace, White with purple eye.
Robin Hood, (Andrews.) Deep rose-purple. 50 cents each.
R. P. Struthers, Bright rosy-carmine; resists drought and heat.
Silverton, (Andrews.) Clear pale lavender; large flowered. 50 cents each.
Snowcap, (Andrews.) Large florets of snow white. Unquestionably the best white yet. 50 cents each.
Thor, Lively deep salmon-pink.

Andrews' Phlox open up new possibilities in gardening

VARIOUS PHLOX SPECIES.***divaricata**

- atrorubens**, Reddish-purple.
canadensis, Iowa "Sweet William." Lavender-blue flowers on 10-inch stems. April and May.
canadensis alba, White form of above.
***subulata**, Moss Phlox. A fine creeping plant for rock gardens; thrives in hot, dry situations and blooms profusely in May.
Blue Hill, Delicate pale blue.
alba, Pure white.
atropurpurea, Deep carmine.
lilacina, Light lilac.
rosea, A pink beauty.
vidid, Bright pink with red eye.

Phlox divaricata grows well in sun or shade

PHYSOSTEGIA, False Dragon's Head.

- virginica**, Long spikes of lavender-pink. 3 ft. July and August.
virginica alba, Pure white.
virginica vivid, Deeper rose-pink. 2 ft. Late.

PLATYCODON grandiflora, Balloon Bellflower.

- mariesii**, Blue. 15 inches. July to September.
mariesii alba, White.

PLUMBAGO.

larpentae. Deep blue; spreading habit, 6 to 12 inches. Late summer.

POLEMONIUM, Jacob's Ladder.

coeruleum. Erect stems of sky-blue, 18 inches. June and July.

coeruleum album. White.

richardsonii. Spires of soft blue, 15 inches.

POTENTILLA, Cinquefoil.

naplaensis roxana. Intense salmon, changing to reddish-pink.

recta. Showy yellow, 2 ft.

***PRIMULA, Primrose. An excellent spring flower, 4 to 6 inches.**

auricula alpina. A rock garden treasure.

Bulleyana. Rich apricot-yellow.

Cashmeriana. Globular heads of bright rosy-lavender flowers.

Cockburniana. Brilliant orange-scarlet.

cortusoides. Rosy-purple; wrinkled heart-shaped leaves, 10 inches.

denticulata. Clear bright lavender, April and May.

florindae. Drooping umbels of bright yellow, 4 inches, July and August.

hirsuta. Yellow.

marginata. Lavender flowers. Neat rosettes of toothed leaves, 6 inches.

mierondata violacea. Deep velvety-violet.

polyanthus munstead, Bunch Primrose. One of the best polyanthas.

Red Giant, Mahogany-red velvet.

Yellow. Heads of glowing yellow flowers; typical of English spring; delightful in the rock garden.

pulverlenta. Rich crimson; tall.

Sutton's Mixed Hardy Primulas. Charming in the rock garden.

veris, **Hybrids**. Many lovely colors.

viscosa. Quantities of rose-colored flowers.

vulgaris, English Primrose. Soft yellow.

Give English Primroses drainage and shade

PYRETHRUM, Painted Daisy.

hybridum roseum. A bright rose pink, 2 ft.

hybridum roseum, James Kelway. Rich deep red.

Best English double and single varieties, mixed.

uliginosum. Abundance of dazzling white daisies, 3 ft. Late autumn.

Pyrethrums are free from attack by pests

RANUNCULUS, Buttercup. \$1.00 per dozen.

repens, Meadow Buttercup. An invasive nuisance.

repens fl. pl. Bright golden-yellow; double flowering.

RED HOT POKER. See Tritoma, page 17.**RUDBECKIA, Coneflower.**

fulgida. Yellow with dark disk, 2 to 3 ft.

monsplaisir. An improved Black-Eyed Susan.

purpurea. Reddish-purple with large brown cone-shaped center, 3 ft.

SALVIA, Meadow Sage.

azurea grandiflora. Profusion of sky-blue flowers in August, 3 ft.

argentea. Large silvery ornamental leaves, 2 ft.

Greggi. Red; long-seasoned bloom.

pratensis tenori. Violet-blue, 2 ft. June to September.

SANTOLINA incana. Aromatic silver foliage; useful as a border plant.

***SAPONARIA, Soapwort.**

ocymoides splendens. Flowers like rosy-pink forget-me-nots. Mid-summer.

ocymoides splendens alba. Like above, white.

***SAXIFRAGA, Rock Splitter.**

aizoon. Creamy white flowers; compact rosettes.

decipens. White flowers, pink spotted; bright green rosettes.

cordifolia. Large shiny ornamental foliage; pink flowers. 1 ft.

encrusted. Various, uncertain.

SCABIOSA.

caucasica. Lavender, 1½ to 2 ft. June to September.

Isaac House Strain. Large lavender-blue flowers; a splendid new strain.

japonica. Blue-lavender. July to September.

SCUTELLARIA, Skull Cap.

Brittonii. A little blue Skullcap; native.

coelestina. Quantities of blue Snapdragon-like flowers. A compact plant. 12 to 18 inches. August.

***SEDUM, Stonecrop.**

acre, Golden Moss. Bright yellow flowers on neat mats of green.

aughrim. Gray-green, minute foliage; a gem for the rock garden.

Ellacombianum. Attractive foliage, yellow flowers.

ewersii. Heads of rose-pink; semi-trailing glaucous foliage.

glaucum. A pretty glue-green creeper.

Kamtschaticum. Orange-yellow flowers; glossy green leaves. 8 inches.

lydium. A lovely dainty one; bright green, often tinged red.

palmeri. Similar to *S. ewersii*; foliage somewhat looser.

pulchellum. One of the most effective in the rock garden.

sarmentosum. Light green foliage; a prostrate rapid grower.

sexangulare. Like *S. acre*, but richer and neater green foliage.

Sieboldi. Bright pink flowers; round glaucous leaves. 8 inches. Autumn.

spectabile. Rose-colored flower-heads. 18 inches.

spectabile brilliant. Bright amaranth-red.

stoloniferum. Flowers purplish-pink; a rapid grower. 6 inches. \$2.00 per dozen.

stoloniferum roseum. Clear pink flowers.

***SEMPERVIVUM, House Leek, Hen and Chickens.**

arachnoideum. Dainty cobwebbed rosettes.

globiferum. Flattened rosettes.

tectorum. Broad rosettes.

SHASTA DAISY. See *Chrysanthemum maximum*, page 6.

Do you belong to the Rock Garden Society?

SIDALCEA rosea, Greek Mallow. Bright rose. 2½ ft. June and July.

***SILENE, Catchfly.**

alpestris. Glistening white, good. 6 inches. May and June.

maritima. Dwarf white; long blooming season.

pusilla. Pure white star-like flowers. Tufts of deep green.

saxifraga. Profusion of small clear white flowers. 6 to 8 inches.

Schafta, Autumn Catchfly. Pinky-purple. Showy in September.

- SOLIDAGO canadensis**, Golden Rod. Arched sprays of golden yellow. 5 ft.
- SOLIDASTER**. See *Aster Hybridus Luteus*, page 4.
- SPIRAEA HERBACEOUS**. See *Astilbe*, page 4.
- STACHYS lanata**, Woundwort. Large whitish woolly leaves. Flowers inconspicuous.
- STAR OF BETHLEHEM**. See *Ornithagalum umbellatum*, page 12.
- STATICE**, Sea Lavender.
dumosa. Flowers silver to blue; large basal leaves. 2 ft.
latifolia. Purplish-blue. Known as "Lavender Baby's Breath."
- SWEET WILLIAM**. See *Dianthus*, page 6.
- TEUCRIUM chamaedrys**. Shiny dark green leaves. Like Dwarf Boxwood. 1 ft.
- THALICTRUM**, Meadowrue.
adiantifolium. Foliage like the Maiden-Hair Fern. 2 ft.
aquilegifolium. Creamy-white panicles; columbine-like foliage. 4 ft.
aquilegifolium roseum. Rose-pink flowers.
dipterocarpum. Dainty lilac-mauve; a delightful cut flower. 3 ft.
flavum (glaucum). Soft yellow; bluish foliage. 4 ft. July.
- THERMOPSIS montana**. Showy yellow pea flowers. 1 ft.
- ***THYMUS**, Thyme.
citriodorus. Lemon-scented thyme; good in flagstone paths and steps.
lanuginosus. Woolly-leaved thyme.
serpyllum splendens. Makes a close, fragrant carpet.
coccineum. Crimson flowers; prostrate grower.
- TRADESCANTIA virginica**, Spiderwort. Blue star-flowers, grass-like leaves.
- ***TRILLIUM**, Wake Robin.
grandiflorum. Three waxy-white petals. Spring.
nivale. Dwarf Wood Lily. Spring.
- TRITOMA**, Red Hot Poker or Torch Lily. 2 to 3 ft.
pfitzeriana. Flame Flower.
pfitzer's Triumph. Bright orange-scarlet.
Stark's Perpetual. Deep showy orange.
- ***TROLLIUS**, Globe Flower.
europaeus hybrids. Large soft yellow and orange balls of silky texture. 1 ft. Spring and fall. A tip-top perennial.
ledebouri, Golden Queen. Deep orange-yellow. 2 ft. July.
pumila. Very dwarf. \$1.00 each.

Trollius is well worth growing

- ***TUNICA saxifraga**. Delicate pink Baby Breath flowers. 8 inches.
- UVULARIA**, Merrybells.
perfoliata. Soft yellow pendant bells; graceful foliage. 1½ ft.
- VALERIANA**. See *Centranthus*, page 5.

VERONICA, Speedwell.

- **amethystina*. Makes a dazzling sheet of blue.
- **incana*. Violet-purple spires; silvery white foliage. 10 inches.
- longifolia alba*. White. 2 ft.
- longifolia subsessilis*. Splendid long spikes of deep blue. 2 ft.
- **pectinata*. Lavender-blue flowers; woolly leaves; prostrate.
- **repens*. Pale blue flowers on a green carpet of tiny round leaves.
- ***Royal Blue**. Bright blue. 9 inches. July.
- **rapestris*. Profusion of tiny blue spikes, in June. 4 inches.
- **spicata alpina*. Violet-blue. 6 inches.
- **teucrium*. Brilliant blue spires. 12 inches.

VINCA MINOR, Periwinkle. Lavender-blue flowers; evergreen ground cover.

Try shearing your Periwinkle. It's lovely when erect

VIOLA CORNUTA. \$1.50 to \$2.50 per dozen.

- Lavender Varieties: Maggie Mott, Radio, Portland Gem, Floriariensis.
- Pink: Bosniaca.
- Purple and Dark Blue: Jersey Gem, Jersey Jewel, Lord Nelson.
- White: Sutton's White, White Perfection.
- Yellow and Apricot: Lutea, Sutton's Apricot and bronze shades.
- Mixed: Containing many of above, and other hybrids.
- Various: Johnny-Jump-Ups, Miniature Pansies. 75 cents per dozen.

Viola Jersey Gem is deservedly popular

VIOLA, Violet.

- pedatifida*. Birdfoot Violet; native.
- odorata*, Sweet Violet. Purple and fragrant.
- Russian. Large double, fragrant.
- The Czar. Excellent single blue, long stems.
- nuttallii*, Prairie Violet. Bright yellow; native.
- Other Colorado Varieties. See our catalogue. "Rocky Mountain Rarities."

YUCCA.

- angustissima*. Narrow foliage, peeling at the edges.
- baccata*. Large leaved; bold and handsome.
- coloma*. Stiff blue foliage; a dwarf species.
- filamentosa*. Effective and striking on dry banks.
- filamentosa variegata*. Striped white.
- glauca*, Colorado native. Tall spikes of primrose-white; distinctive evergreen foliage.

TREES

In most of the following trees we have available smaller and larger sizes also. Of varieties difficult to start in Colorado we offer only acclimated plants.

ACER, Maple.

dasycarpum , Silver Maple. 8 to 10 ft.....	\$ 2.50
ginnala , Tartarian Maple. Small tree or large shrub.....	1.50
platanoides , Norway. Dark green foliage. 6 to 8 ft.....	2.50
schwedleri , Red Leaf Maple. Bright red leaves in spring. 5 to 6 ft.....	2.50
rubrum , Red Maple. Foliage brilliant scarlet. Small.....	2.50
saccharum , Sugar Maple. Colorful fall foliage, but not very hardy in Colorado. Small.....	2.50

AESCULUS HIPPOCASTANUM, True Horsechestnut. 5 to 6 ft.. 5.00

AILANTHUS GLANDULOSA, Tree of Heaven. Brilliant green
ornamental leaves. 4 to 5 feet..... 1.50

APPLE, 4-5 ft.

Delicious	1.25
Duchess	1.25
Golden Winesap	1.25
Grimes Golden	1.25
Jonathan	1.25
Stamen Winesap	1.25
Yellow Transparent	1.25

Larger sizes, well-branched(established Apple trees, \$3.50 to \$7.50.

ASH. See Fraxinus, page 20.

ASPEN. See Populus, page 21.

BETULA, *alba laciniata*, Cut-Leaf Weeping Birch. Silver-white
bark. 6-8 ft..... 2.50

BIRCH. See Betula.

CATALPA BUNGEI, 1½-2-inch caliper..... 5.00

CARPINUS BETULUS, European Hornbeam..... 1.50

CELTIS.

occidentalis, Hackberry. Drouth-resisting shade tree. 5-6 ft.. 1.50

CHERRY, 4 ft.

Compass	1.25
Early Richmond	1.25
English Morello	1.25
Montmorency	1.25
Wragg	1.25

Larger and smaller sizes at proportional prices.

CHESTNUT. See Aesculus.

COTTONWOOD. See Populus, page 21.

CRAB, 4-5 ft.

Dolga	1.00
Whitney	1.00
Red Siberian	1.00

For Flowering Crabs, see Malus, page 20.

CRATAEGUS, Hawthorn.

<i>carrieri</i> , Glossy dark green leathery foliage, red berries in winter	\$1.00-3.50
<i>coccinea</i> , Thicket Hawthorn. Flowers with red disk, scarlet berries	1.50
<i>cordata</i> , Washington Hawthorn. Bright red fruit.....	1.50
<i>crus-galli</i> , Cockspur Thorn. White flowers, good foliage.....	2.00
<i>mollis</i> , Downy Hawthorn. Vigorous grower, white flowers, red berries	1.50
<i>oxycantha</i> , English May Thorn. White flowers, clusters of red berries. 4-5 ft.....	2.50
<i>oxycantha</i> , Paul's Scarlet. Bright red flowers in great profusion	2.00
<i>punctata</i> , Dotted Hawthorn. White.....	1.50
<i>sanguinea</i> , Red Haw. 5-6 ft.....	2.00

Hawthorn Paul's Scarlet is a beautiful tree. Blooms at
Iris time

ELAEAGNUS.

<i>angustifolia</i> , Russian Olive. Silver foliage. 5-6 ft.....	1.00
--	------

ELM. See Ulmus, page 22.

FRAXINUS AMERICANA , White Ash. 8-10 ft.....	2.00
---	------

FAGUS SYLVATICA , European Beech.....	3.50
--	------

GINGKO BILOBA , Maiden Hair Tree.....	3.50
--	------

GLEDITSIA TRICANTHOS INERMIS , Thornless Locust.....	1.50
---	------

GYMNOCLADUS DIOICA , Kentucky Coffee Tree.....	1.50
---	------

HACKBERRY. See Celtis, page 19.

HAWTHORN. See Crataegus.

HORNBEAM. See Carpinus, page 19.

JUGLANS NIGRA , Black Walnut. Large.....	5.00
---	------

KOELREUTERIA PANICULATA , Goldenrain Tree.....	1.50
---	------

LARIX EUROPAEA , European Larch. 4-5 ft.....	5.00
---	------

LINDEN. See Tilia, page 21.

LIRIODENDRON TULIPIFERA , Tulip Tree. Small.....	1.50
---	------

LOCUST, BLACK. See Robinia, page 21.

MALUS, Flowering Crab.

<i>arnoldiana</i> . Large rosy-white flowers, yellow fruit.....	1.50
<i>atrosanguinea</i> . Brilliant carmine flowers.....	2.00
<i>dolga</i> , Crab. Brilliant red edible fruit.....	1.50
<i>eleyi</i> . Pink flower buds, dark red foliage.....	1.50
<i>floribunda</i> , Japanese Flowering Crab. One of the best and hardiest; bright pink buds, yellowish fruit.....	1.50
<i>hopa</i> . Red Flowering Crab. Attractive fruit.....	1.50
<i>ioensis</i> , Prairie Crab. Single pink flowers.....	1.00
<i>ioensis plena</i> , Bechtel Crab. Double salmon-pink flowers.....	1.50
<i>niedzwetzkyana</i> , Redvein Crab.....	1.50
<i>scheideckeri</i> . Bright rose-colored flowers; prolific.....	2.00

MAPLE. See Acer, page 19.

MORUS ALBA TATARICA , Russian Mulberry.....	1.00
--	------

MOUNTAIN ASH. See Sorbus.

OAK. See Quercus.

PEAR.

Duchess, 4-5 feet.....	1.50
Keiffer, 5 feet.....	1.50
Parker, 4-5 feet.....	1.50
Seckel, 4-5 feet.....	1.50

PLATANUS OCCIDENTALIS, Sycamore. Dense, bright green, very large leaves. 6-8 feet..... 3.50

PLUM, Fruiting; each..... 1.00
Americana, Imperial Gage, Lombard, Opata, Sapa, Tawena, Toka, Underwood, Wild Goose, Yellow Egg.

POPULUS, Poplar.

alba, White Poplar.....	1.00
bolleana, Thick silver-green foliage. 6-8 feet.....	1.50
deltoides, Cottonwood. Cottonless variety.....	1.50
nigra italica, Lombardy Poplar. Valuable for pyramidal effect	.75
tremuloides, Quaking Aspen. Nursery grown trees and whips	1.00

Lombardy Poplars attract attention **TO** an unsightly
object—not **FROM** it

PRUNUS, Flowering Plum.

cistena, Purpleleaf Plum.....	1.50
newporti, Newport Plum.....	1.50
serotina, Wild Black Cherry.....	.50
tomentosa, See Shrubs,	
triloba, Brilliant warm pink flowers.....	1.00

PTELEA TRIFOLIATA, Hoptree..... 1.00

QUERCUS, Oak.

coccinea, Scarlet Oak. Small.....	1.00
gambelii, Scrub Oak.....	2.00
havardii, Scrub Oak. Small.....	.75
macrocarpa, Bur Oak. Small.....	1.00
palustris, Pin Oak.....	2.00
rubra, Red Oak. Small.....	1.50

ROBINIA PSEUDOACACIA, Black Locust..... 1.50

RUSSIAN OLIVE. See *Elaeagnus angustifolia*,

SALIX, Willow.

caprea, Pussywillow. Large pussies.....	1.00
irrorata, Pussywillow. 3-4 ft.....	1.50
niobe, Golden Weeping Willow.....	1.00
petandra, Laurel Willow.....	1.00
vitellina aurea, Golden Willow.....	1.50

SHEPHERDIA. See Shrubs,

SORBUS AUCUPARIA, Mountain Ash..... 2.00

SYCAMORE. See Platanus,

TILIA, Linden.

americana, Basswood. Large glossy leaves, fragrant yellow flowers	2.50
vulgaris, European Linden. Lime tree.....	2.50

ULMUS, Elm.

<i>americana</i> , American Elm.....	2.00
<i>campestris</i> , English Elm. Small.....	1.50
<i>pumila</i> , Chinese Elm. Grows rapidly. Small.....	1.50
Vase Elm. Uniform vase shape. Large.....	3.00

WILLOW. See *Salix*, page 21.

WALNUT. See *Juglans*, page 21.

EVERGREENS

PRICES: Blue Spruce, Silver Cedar, White Fir, Douglas Fir, Chinese Junipers, and other upright evergreens from \$1.00 per ft. up. Selected specimens and large sizes priced individually. Nursery run at lower prices.

Juniper *Pfitzeriana*. *Sabina*, and other horizontal evergreens, selected specimens:

1-1½ ft. wide.....	\$1.50
1½-2 ft. wide.....	2.00 to 3.00
2-2½ ft. wide.....	3.50 to 5.00
2½-3 ft. wide.....	5.00 to 6.00
3-4 ft. wide.....	6.50 to 8.00

Balled and burlapped, delivered locally.

Crated for shipping, \$1.00 and up, according to size.

ABIES CONCOLOR, White Fir. The bluest of the firs.

BLUE SPRUCE. See *Picea pungens glauca*.

DOUGLAS FIR. See *Pseudotsuga douglasii*, page 23.

Juniper *monosperma* has a beautiful winter color

JUNIPERUS, Juniper.

Chinensis, Chinese Juniper. Gray-green, columnar.

pfitzeriana. Gray-green, spreads horizontally; hardy and obliging.

**procumbens*, Creeping Chinese Juniper. Light blue foliage.

communis depressa, Ground Juniper. Low growing, spreading, silver-green prickly foliage.

communis depressa plumosa, Andorra Juniper. Mulberry-red in winter.

excelsa stricta, Greek Juniper. Conical, compact; slow growing.

monosperma. Blue to bright green;; erect, bushy; worth growing.

Sabina, Savin Juniper. Low spreading, erect ears.

scopulorum, Colorado Silver Cedar. Soft green, compact, columnar. Strikingly beautiful.

virginiana cannarti. Deep green, erect stem, horizontal branches.

virginiana glauca. Silver-blue; form like *cannarti*.

**Waukegan*. Steel-blue; prostrate, dense.

PICEA, Spruce.

Canadensis albertiana, Black Hills Spruce. Green, bushy, dense.

Englemannii, Engleman Spruce. Blue to green; less wiry than Blue Spruce.

pungens glauca, Colorado Blue Spruce. Lovely silver-blue, symmetrical.

pungens. Like above, but foliage green.

PFITZER JUNIPER. See *Juniper chinensis*, *pfitzeriana*.

PINUS, Pine.

- aristata*, Foxtail or Bristlecone. Lively green, erect, bushy.
edulis, Pinon Pine. Bright green; a low bushy tree.
flexilis, Limber Pine. Blue-green; erect, irregularly shaped.
 **montana mughus*, Mugho Pine. Low, bushy, round, hardy.
ponderosa, Western Yellow Pine. Long needles, rich green, drouth resistant; a lovely tree.
tanyosho, Japanese Table Pine. A miniature.

PSEUDOTSUGA DOUGLASII. Soft dark green, erect, rapid grower.

THUYA, Arborvitae.

- occidentalis pyramidalis*, American Pyramidal Arborvitae.
occidentalis wareana, Siberian Arborvitae.
orientalis aurea nana, Berckman's Golden Arborvitae. Hardy only in selected locations in Colorado.

MISCELLANEOUS EVERGREENS

ARCTOSTAPHYLOS uva ursi, Kinnikinnik. Small glossy leaves, scarlet, trailing dense ground cover. Native.

BERBERIS repens, Colorado Holly. Splendid dwarf Mahonia; a good ground cover.

MAHONIA aquifolium, Oregon Hollygrape. Glossy green leaves, red in winter.

PACHYSANDRA terminalis, Japanese Spurge. Evergreen ground cover.

VINCA minor, Periwinkle. Blue flowers; good foliage; trailing.

EUONYMUS. Evergreen Varieties. See Shrubs, also Vines, page 30.

Firm planting is good planting

SHRUBS

PRICES: Average planting size, each.....\$1.00
 Larger, heavier specimens, each..... 1.50 to 2.00
 Small size, each..... .50
 Largest specimens priced individually, according to size.

ALMOND, Flowering. See *Prunus glandulosa*, page 26.

AMELANCHIER canadensis, Shadblow. White flowers, red fruit.

AMORPHA, False-indigo.

- canescens*, Lead Plant. Violet-blue; feathery gray foliage; dwarf.
fruticosa, Indigo Bush. Finely cut foliage; tall, spreading habit.
fragrans, Purple-blue spikes. 5-6 ft.
nana, Dwarf form of *fruticosa*; fragrant.

ARALIA.

- pentaphylla*, Attractive light green foliage, thorny stems.
spinosa, Devil's Walking Stick. Good foliage, forbidding canes.

ARONIA arbutifolia, Chokeberry. Bright red berries in autumn. 3-4 ft.

nigra (*melanocarpa*). Lower and spreading. Black fruit.

BEAUTY BUSH. See *Kolkwitzia amabilis*, page 25.

BERBERIS, Barberry.

atropurpurea. Red-leaved.

Koreana. Pendant clusters of red berries.

lucida. Scarlet berries in groups; upright, open habit.

repens, Native Colorado Mahonia. Dwarf evergreen ground cover.

thunbergi, Japanese barberry. Red berries, dense habit.

BITTERSWEET. See *celastrus*, page 30.

BUDDLEIA, Butterfly Bush.

alternifolia. An improved refined form of *B. magnifica*.

Fortune. Dark leathery foliage; splendid sprays of lilac flowers.
The best of the Buddleias. Small plants, \$1.00 each.

magnifica. Long spikes of lavender flowers.

CALLICARPA *purpurea*. Beauty Berry. Pink flowers. August.

CALYCANTHUS *floridus*, Sweet Shrub. Fragrant brownish flowers; erect growth.

CARAGANA, Russian Pea.

arborescens. Yellow flowers, good foliage; slender, erect form.

aurantica. Minute bright green foliage; compact.

CARYOPTERIS *incana*, Blue Spiraea. Lavender-blue flowers in August; a really good shrub.

CEANOTHUS *fendleri*, Native Buckthorn. 2 ft.

CERCOCARPUS *parvifolius*, Mountain Mahogany. Native.

CORNUS, Dogwood.

stolonifera lutea. Yellow twig.

sibirica. Red twig.

COTONEASTER.

acutifolia. White flowers, black fruit, shiny foliage.

horizontalis. Red berries; low spreading habit.

CYDONIA *Japonica*, Japanese Quince. Showy scarlet flowers early spring.

CRAB, FLOWERING. See *Malus*, page 20.

DAPHNE *cnereum*. Fragrant pink flowers, good foliage; very lovely.

DESMODIUM. See *Lespedeza*, page 25.

DEUTZIA.

gracilis. White flowers, in May; slender, graceful.

Pride of Rochester. Pinky-white flowers; tall.

scabra crenata. Double, rose-pink flowers.

scabra excelsa.

DOGWOOD. See *Cornus*.

There is a Why and a How to pruning, too.

ELDER. See *Sambucus*, page 27.

EUONYMUS.

alatus, Corkbark. Brilliant autumn foliage.

alatus compactus. Dwarf form of above.

atropurpureus, Wahoo. Brilliant autumn foliage.

Bungeanus. Pinky-orange pods; good foliage.

Europaeus, European Burningbush. Scarlet fruit.

patens. Upright, evergreen; red fruit.

Yedoensis, Yeddo Euonymous. Showy pink fruit. 8-10 ft.

For other *Euonymus*, see *Vines*, page 30.

- EXOCHORDA**, Pearlbush.
grandiflora. Good clear white flowers; erect.
- FORESTIERA** *neo-mexicana*, Mountain Privet. Fine texture, dense habit; a desirable hedge.
- FORSYTHIA**, Golden Bell.
intermedia spectabilis. Yellow flowers; upright habit.
suspensa. Weeping branches.
- GENISTA**, Broom.
tinctoria. Yellow flowers, fine foliage; slender erect branches.
- HAMAMELIS** *virginiana*, Witchhazel. Yellow blooms.
- HIGHBUSH CRANBERRY**. See *Viburnum*, page 29.
- HOLODISCUS** *dumosus*, Rock Spiraea. Colorado native. Creamy-white racemes.
- HONEYSUCKLE**. See *Lonicera*.
- HYDRANGEA** *arborescens*, Hills of Snow. July to September.
- HYPERICUM**, St. John's Wort.
aureum. Golden yellow with conspicuous stamens. 3 ft.
patulum. A neat erect shrub; clear yellow flowers.
prolificum. Yellow. 3-5 ft. July to September.
- JAMESIA** *americana*, Wax Flower. Philadelphus-like flowers, dense habit. Colorado native.
- ***KALMIA** *polifolia (microphylla)*. A miniature alpine laurel; native.
- KERRIA** *japonica*. Yellow flowers; vivid green stems.
- KOLKWITZIA**, Beauty Bush.
amabilis. Silver-pink flowers on graceful branches; a splendid shrub.
- LABURNUM** *vulgare*, Golden Chain. Yellow flowers in pendant clusters.
- LILACS**. See *Syringa*, page 28.
- LESPEDEZA (Desmodium)**, Purple Bush Clover.
formosa peduliflorum. Reddish-purple flowers on arching branches. August.
- LIGUSTRUM**, Privet.
Regelianum. Bright glossy leaves, horizontal habit; a good shrub.
vulgare, English. Dark glossy foliage, erect habit; excellent for screening.
 For other Privet, see Hedging, page 29.
- LONICERA**, Honeysuckle Bush.
Korolkowi floribunda, Blueleaf Honeysuckle. Profuse pink flowers, blue-gray foliage.
Morrowi. White flowers, scarlet fruit; spreading habit.
tatarica alba. White flowers; erect habit; red fruit.
tatarica rosea. Pink flowers, prolific red fruit.
involutrata, Twinberry. Native subalpine honeysuckle.
 For Climbing Honeysuckle, see Vines, page 30.
- MAHONIA** *aquifolium*. See Miscellaneous Evergreens, page 23.

Plant Iris Spring Maid near Blue-leaf Honeysuckle

MALUS, Crabs, Flowering, see page 20.

MORUS, Russian Mulberry. A coarse, erect shrub; also tree. Good foliage.

OAK, Scrub Oak. See *Quercus*, page 21.

PHILADELPHUS, Mock Orange.

Bouquet Blanc. Clusters of white, double flowers;; medium height.
coronarius. Fragrant white flowers; tall. May.

grandiflorus. Large white flowers, robust grower. June.

Lemoinei. Fragrant creamy-white flowers; compact, slender. June.

Mt. Blanc. Large white semi-double flowers.

nivalis. Snow-white flowers; compact.

virginalis. Large wax-white flowers; good foliage; the fairest of the family.

PHYSOCARPUS, Ninebark.

monogynus. Branches freely. Colorado native.

opulifolius. Pinky-white, orange seed heads; vigorous.

opulifolius nanus. A compact form of above.

POTENTILLA frutescens, Cinquefoil. Yellow continuous bloomer.

PRIVET. See *Ligustrum*, page 25; and Hedging, page 29.

PRUNUS.

besseyi. White flowers, black fruit; a good sandbank cover.

glandulosa rosea. Pink Flowering Almond.

glandulosa alba. White Flowering Almond.

tomentosa. Showy pink-to-white flowers, red fruit.

triloba. Bright pink, double flowers; early.

For Tree *Prunus*, see page 21.

RHAMNUS cathartica, Buckthorn. Greenish-yellow flowers, black fruit; good as a coarse screen.

RHODOTYPOS, Jetbead.

kerrioides. White flowers, bright green foliage.

RHUS, Sumac.

canadensis. Yellow fragrant flowers, red berries.

glabra. Smooth-leaf Sumac. Leaf and bark smooth.

glabra laciniata. Cut-leaf Sumac.

trilobata, Lemonade Sumac. A hardy, drought-resistant native shrub.

typhina, Staghorn Sumac.

typhina laciniata. Cut-leaf Staghorn.

RIBES, Current.

aureum (odoratum), Golden Current. Yellow fragrant flowers.

cereum, Squaw Current. Native.

RUBUS (Bossekia).

deliciosus. Thimbleberry. Large white flowers; a most attractive and valuable hardy shrub.



Pentstemon crandallii—Turquoise blue
A delightful rock plant and easy to grow

Page 12



Boykinia Jamesii—Brilliant deep rose
A rare and lovely alpine

Page 4



Page 22

Picea pungens glauca
Colorado Blue Spruce



A joy
all winter

Page 29

A Hedge of Colorado Blue Spruce

ROSES

ROSA, Rose.

Austrian Copper. Orange-copper, single; spectacular.

blanda, Meadow Rose. Pink, single; red bark.

Dr. E. M. Mills. Pink, semi-double.

Harrisoni. Harrison's yellow.

Hugonis. Soft yellow, single; beautiful, hardy, and adaptable.

Moss. White and pink.

**Rouletti*, Alpine Rose. A pink everblooming rock garden gem. Up to 8 inches. 50 cents each.

rubinosa, Sweet Briar. Brilliant winter fruit.

rugosa hybrids.

Agnes. Yellow to amber.

Conrad Meyer. Pink.

Grootendorst. Silver-pink; continuous bloomer.

F. J. Grootendorst. Red.

Sir Thomas Lipton. Large white flowers.

setigera, Prairie Rose. Single pink in clusters, hardy; a lovely shrub.

woodsii, Rocky Mountain Rose.

For Climbing Roses, see Vines, page 31.

HYBRID TEA ROSES. Ask for list.

When you plant roses this year plant **potted roses**—then you are assured success. Here at Upton Gardens we offer you sturdy potted roses growing in specially prepared soil. Roots are undisturbed and growth is continuous.

SALIX, Willow.

caprea, Pussy Willow.

irrorata, Native Pussy Willow.

SAMBUCUS, Elder.

acutiloba, Cut-leaf Elder.

canadensis aurea. Golden Elder.

microbotrys. Red-berried Elder. Native.

SHEPHERDIA.

argentea, Buffalo Berry. Silver-gray foliage, red berries.

canadensis. Scarlet berries; native and extremely hardy.

Plant Thimbleberry in difficult dry places

SNOWBALL. See *Viburnum opulus sterile*, page 29.

SORBARIA.

Atchisonii. Fluffy racemes of creamy white; a good summer shrub.

sorbifolia. White foamy flowers; fern-like foliage.

SPIRAEA.

arguta, Garland Spiraea. Profuse white flowers; early; feathery foliage.

bumalda Anthony Waterer. Free flowering, deep pink; neat low shrub.

callosa alba, Japanese Spiraea. Like Anthony Waterer, but white.

Douglasi. Deep rose. July and August.

froebeli. A taller and larger Anthony Waterer.

henryi. White flowers; tall. June.

Margaritae. Bright pink.

thunbergii. Early white flowers; a dense fluffy bush.

trichocarpa, Korean Spiraea. Snowy white umbel-like racemes; does well in Colorado.

van houttei, Bridal Wreath. Drooping sprays of profuse white. May and June.

SYMPHORICARPOS, Snowberry.

- chenaulti*. Pink and white flowers in June, followed by red berries.
racemosus. Pink flowers, showy white berries.
vulgaris, Coralberry. Small red berries pendant along stems in winter.

Save wood ashes for your Peonies, Roses, and Delphiniums

LILACS

SYRINGA, Lilac Hybrids. Known as French Lilacs.

Varieties that have proved finest in Colorado are marked ④.

2-3 ft.....\$1.00 to \$2.50 }
 3-4 ft.....\$1.50 to \$3.00 } According to variety.
 Large mature plants, 4-5 ft., 5-6 ft., \$2.50 to \$10.00
 According to variety.

- Alphonse Lavallee*. Double, purplish-lilac.
Belle de Nancy. Double, satiny-pink.
Bleuatre. Single, distinctly blue; early, good grower.
Charles Joly. Double, dark violet-purple.
Charles X. Single, blue-purple.
 ④ *Congo*. Single, very dark red-purple; large flowers.
Diderot. Single, pinky-purple; large loose flowers.
Duc de Massa. Double, clear violet-purple.
 ④ *Edith Cavell*. Double, creamy buds open white.
Edmond About. Double, purple; late.
 ④ *Ellen Willmott*. Double, white; large lily of the valley buds.
Henri Martin. Masses of lovely violet-mauve flowers.
 ④ *Hippolyte Maringer*. Double, large pinkish-purple, fluffy; very good.
Jacques Callot. Single, large rosy-pink.
Jan Van Tol. Single; a new large white.
Jeanne D'Arc. Double, white; late.
 ④ *Jules Simon*. Double, purplish-pink; very large, lovely florets.
Lamartine. Single, large, mauve-pink.
Leon Gambetta. Double, buds bright pink opening rosy-lilac; good.
 ④ *Lucie Baltet*. Single, warm old-rose; flowers erect above foliage.
Ludwig Spaeth. Single, dark reddish-purple; floriferous.
Macrostachya. Single, buds violet; flowers pink to white.
Marie Legraye. Single, pure white; inclined to dwarf habit.
Michel Buchner. Double, blue-lilac; dwarfish habit.
Mme. Abel Chataney. Double, white; late.
 ④ *Mme. Francisque Morel*. Single, clear mauve-pink. Mrs. E. Harding says, "One of the finest single lilacs."
Mme. Florent Stepman. Single, buds cream, flowers white.
 ④ *Mont Blanc*. Single; one of the very best whites.
Olivier de Serres. Double, violet-blue; vigorous.
 ④ *Paul Thirion*. Double, claret-rose; lovely red buds.
 ④ *Pres. Fallieres*. Double, very large, lilac-pink; late, very good.
Pres. Grevy. Double, blue; large plumes.
Pres. Lincoln. Single, clear Wedgewood blue; compact habit.
Pres. Viger. Double, light purple; loose, graceful forked plumes.
Reaumur. Single, violet-petunia; tall, floriferous.
Rene Jarry-Desloges. Double, a lovely blue; buds pink.
Thunbergi. Double, violet-mauve; long slender spikes.
 ④ *Toussaint L'Ouverture*. Single, dark purple-red; one of the darkest.
Vestale. Single, white; long slender erect blooms.
Vivian Morel. Double, lilac to blue; floriferous.
 ④ *Wm. Robinson*. Double, buds red, flowers pinky-lavender; lovely leaves.

French Lilacs bloom late, so are rarely hurt by frosts

SYRINGA, Lilac.

- japonica*. Creamy-white, tall. June.
- Josikaea*, Hungarian Lilac. Pink flowers. Late.
- Pekinensis*, Peking Lilac. Plumes of creamy-white.
- persica*, Persian Lilac. Purple, erect flowers, fine texture.
- rothamagensis*, Chinese Lilac. Reddish-purple; slender habit.
- villosa*. Pink flowers. June. Vigorous grower.
- vulgaris*. Common Purple and Common White. We offer vigorous 5-ft. plants splendid for immediate screens and hedges. \$2.00 each.

TAMARIX. Graceful shrubs of feathery foliage.

- africana*. Pink panicles. Spring. Red bark.
- amurense*. Creamy flowers.
- hispida*. Bright pink. Midsummer. Silver-green foliage.

VIBURNUM.

- Americanum*, Highbush Cranberry. White flowers, scarlet fruit. 8 ft.
 - Carlesii*. Pink to white, wax-like flowers; fragrant. 4 ft.
 - dentatum*, Arrowwood. Bright blue fruit.
 - lantana*, Wayfaring Tree. Fruit red, changing to black.
 - lentago*, Nannyberry. Blue-black fruit. 6 to 8 ft.
 - opulus*, European Cranberrybush (Guelder Rose). Scarlet fruit.
 - opulus nanum*. Dwarf compact form.
 - opulus sterile*, Snowball. Large round flower heads.
 - plicatum*, Japanese Snowball. Large white balls. May.
- Numbers indicate ultimate height.

It isn't a Garden unless it's enclosed

HEDGES

Shorn and Naturalistic.

Prices for shrubs approximately 2 ft. high, unless otherwise noted.

BARBERRY , Japanese. Per 100.....	\$25.00
BUSH HONEYSUCKLE . Per 100.....	25.00
CARAGANA arborescens , Pea Tree. Per 100.....	25.00
CHINESE ELM , whips. Per 100.....	15.00
CHINESE ELM , 3-4 ft. branched. Per 100.....	30.00

For a tall quick hedge plant Chinese Elm

EUONYMUS patens , 12-15 inches. Per 100.....	30.00
EVERGREENS , 2 ft. high, per lineal foot, planted.	
Colorado Blue Spruce	2.00
Colorado Green Spruce	1.75
Douglas Fir	1.75
Juniper monosperma , 12-18 inches.....	3.00
Juniper scopulorum , Silver Cedar.....	2.50
For higher hedges of evergreens proportionately higher prices.	
FORESTIERA neo-mexicana , Mountain Privet. Per 100.....	50.00
HAWTHORN . Per 100.....	35.00
LILAC . Per 100.....	35.00
PRIVET . Per 100.....	25.00
Larger and smaller sizes priced accordingly.	
Amoor River .	
Ibota .	
Lodense , 6 to 12 inches. Per 100.....	35.00
Regel .	
Thompson's .	
Vulgare , English.	
RUSSIAN OLIVE . Per 100.....	25.00
SPIRAEA Van houttei . Per 100.....	20.00
THIMBLEBERRY , small. Per 100.....	35.00

Colorado native evergreens make excellent formal hedges

VINES

PRICE: 75 cents each, unless otherwise noted.
Larger plants priced proportionally.

AKEBIA *quinata*. Ornamental and graceful; shade.

AMPELOPSIS.

Englemanii. Self-clinging Virginia Creeper.

lowii. Slow low-growing, like *veitchii*.....\$ 1.00

quinquefolia. Common Virginia Creeper..... .50

Santa Paulii. An improved *englemanii*. More claws..... 1.00

Veitchii (*tricuspidata*), Boston Ivy. The best. Protect from Colorado winter sunshine.

ARISTOLOCHIA, Dutchman's pipe.

sipho. Large leaves overlapping neatly. Likes shade.

BIGNONIA, Trumpet Creeper.

radicans. Orange-scarlet flowers.

CELASTRUS, Bittersweet.

orbiculatus, Japanese Bittersweet. A sturdy vine.

scandens, American Bittersweet. Orange-scarlet fruit.

CLEMATIS.

Large-flowered Hybrids.

Henryii. Large white stars..... 1.00

Jackmanii. Violet-purple..... 1.00

Mme. Edouard Andre. Dark crimson..... 1.00

Small flowering.

coccinea (*Texensis*). Brilliant carmine bells with puckered mouths lined with cream cheese; continuous bloomer.

Crispa. Blue-purple flowers. Obliging as either climber or trailer.

orientalis. Small yellow flowers. Airy foliage.

paniculata. Fragrant white stars. Autumn.

**Clematis texensis is an attractive and unusual
herbaceous vine**

DUTCHMAN'S-PIPE. See *Aristolochia*.

EUONYMUS, Evergreen Wintercreeper.

radicans. Narrow leaved, compact. Orange fruit.

carrieri. Shiny pointed leaves.

colorata. Reddish bronze in winter. Good on shady banks.

vegetus. Large glossy round leaves. Orange berries.

GRAPE, Concord..... .50

HEDERA *helix*, English Ivy.

Baltica. A hardier form..... 1.00

HONEYSUCKLE. See *Lonicera*.

IVY. See *Hedera helix*.

LATHYRUS, Perennial Pea.

latifolius, mixed hybrids.

LONICERA, Honeysuckle, Climbing.

halleana. White to buff, almost evergreen.

sempervirens. Scarlet Trumpet.

English Honeysuckle, in variety.

POLYGONUM *auberti*, Silver Lace Vine. White, rapid grower.

ROSES, Climbing. Large field-grown plants.

Alida Lovett. Bright shell-pink.....	1.00
American Beauty. Red, fragrant. An old favorite.....	1.00
American Pillar. A vivid pink; single.....	1.00
Blue Rambler. A washy lavender.....	1.00
Dorothy Perkins. Pink.....	1.00
Dorothy Perkins. Red.....	1.00
Dr. Van Fleet. Pale pink buds and flowers.....	1.00
Hiawatha. Single; clusters of deep rose.....	1.00
Max Graf. Large single pink flowers. Good ground cover.....	1.00
Paul's Scarlet. Bright red, double.....	1.00
Silver Moon. Creamy-white, yellow stamens.....	1.00
Star of Persia. Rich yellow, double.....	1.50
Tausendschoen. Apple blossom pink.....	1.00

Rose Paul's Scarlet does not fade in the sun

For Briars, Hybrid perpetuals, and Rugosa Roses, see Shrubs, page 27.

We offer a list of HYBRID TEA ROSES which we have selected as best for Colorado Climate. New varieties are added each year. Ask for list.

SILVER LACE VINE. See Polygonum, page 30.

TRUMPET VINE. See Bignonia, page 30.

WISTERIA sinensis. Pendant purple panicles; attractive foliage.

WATER PLANTS

NYMPHAEA, Water Lily.

Marliac. White, Rose or Pink, Yellow.....	\$ 1.00
odorata gigantea. Large pure white.....	1.00
polysephala, Colorado Native Water Lily.....	1.00

Other varieties supplied to order.

LIMNOCHARIS HUMBOLDTII, Water Poppy. Primrose yellow .50

SEEDS

LAWN SEED.

Kentucky Blue Grass. Best grade, extra heavy, 30 lbs. to bushel.	
Per lb.....	\$.75
Per 10 lbs.....	6.00

Washington Bent, for close fine sod. Per lb..... 2.00

Special Shade Mixture. Per lb..... 1.50

The best grade of grass seed is the most economical.

If you would like a velvety lawn, ask for our lawn expert

COLORADO EVERGREENS, Coniferous.

Abies concolor, White Fir.

Juniper communis depressa, Ground Juniper.

Juniper monosperma, Green Cedar.

Juniper scopulorum, Silver Cedar.

Picea Englemanni, Englemann Spruce.

Picea pungens glauca, Blue Spruce, especially selected.

Pinus aristata, Foxtail Pine.

Pinus contorta, Lodgepole Pine.

Pinus edulis, Pinon Pine.

Pinus flexilis, Limber Pine.

Pinus ponderosa, Yellow Pine.

Pseudotsuga Douglasi, Douglas Fir.

Seed of above, 25 cents per pkt. Blue Spruce, 50 cents per pkt.

Special prices for larger quantities.

We often have available seeds of our rarer perennials. Ask about these. For seeds of Colorado Alpines and other native plants, see our catalogue, "ROCKY MOUNTAIN RARITIES."

BULBS FOR AUTUMN PLANTING

Crocuses, Hyacinths, Grape Hyacinths, Lillies, Narcissus (Daffodils),
Tulips, Scillas, Snowdrops.

We import first grade bulbs only. Ask for our Bulb List.

Well-fed grass crowds weeds from the lawn

MISCELLANEOUS

	Dozen	Hundred
ASPARAGUS. Washington. 2-year-old.....	\$.50	\$2.50
STRAWBERRIES.		
Gem Everbearing50	2.50
Mastadon Everbearing.....	.50	2.50
GARDEN ORNAMENTS:		
Bird Baths, Sun Dials, Garden Seats, Bird Houses and Fountains. Prices on request.		
GRANULATED PEAT. Bale.....		\$ 3.25
Bushel50
LEAF MOLD. Aspen, Scrub Oak.		
Per Bushel.....		1.00
Per cubic yard.....		15.00
ADCO. Turns garden refuse into manure.		
10 lbs.		1.50
100 lbs.		12.50
FERTILIZER.		
Dairy, per yard.....		3.00
New Dairy, per yard.....		2.00
Sheep, per yard.....		5.00
Screened fertilizer, extra per yard.....		.50
SOIL.		
Loam, virgin sod, clay, silt. Per cubic yard.....		2.00
Black valley loam, rich in humus.....		3.00
PLANT SUPPORTS. Wire and wood.		
RAFFIA. Colors: natural and green.		
LABELS.		
Aquaproof celluloid, copper wired, per dozen.....		.30
Zinc, weather-proof, various sizes. Prices on request.		

PLANTS SUITABLE FOR ROCK GARDENS

For descriptions, see Perennials marked *.

Achillea tomentosa, Yarrow	Helianthemum, Sun Rose or Rock Rose
Ajuga, Bugleweed	Hepatica, Wood Anemone
Allium, Flowering Onion	Heuchera, Coralbells
Alyssum, Basket of Gold	Hypericum, St. John's Wort, dwarf
Anchusa myosotidiflora	Iberis, Candytuft
Anemone, Windflower, dwarf	Iris, various, dwarf
Androsace, Rock Jasmine	Kinnikinnik
Aquilegia, Columbine	Linaria, Toad Flax, dwarf
Arabis, Rock Cress	Linum, Flax
Arenaria, Sandwort	Lychnis, various, dwarf
Artemesia, dwarf	Lysimachia, Loosestrife
Aster, dwarf	Matricaria, Feverfew
Aubrietia, Purple Rock Cress	Mazus reptans
Bellis, English Daisy	Melampodium cinereum, Colorado Rock Daisy
Berberis repens, Colorado Holly	Mertensia, Blue Bells
Boykinia jamesii	Myosotis, Forget-me-not
Cactus, various	Nepeta mussini, Catmint
Calochortus gunnisonii, Mariposa Lily	Oenothera, Evening Primrose, dwarf
Campanula, Bellflower, dwarf	Pachysandra, Japanese Spurge
Carnation, dwarf	Papaver nudicaule, Iceland Poppy
Ceratium, Snow in Summer	Pentstemon, dwarf
Cheiranthus, Wallflower	Phlox, dwarf, various
Clematis, dwarf	Primula, Primrose
Corydalis, Fumitory	Pulsatilla hirsutissima, Anemone
Crucianella stylosa	Sanguinaria, Bloodroot
Cypripedium, Lady's Slipper	Saponaria, Soapwort
Delphinium, dwarf	Saxifraga, Rock-foil
Dianthus, Pinks, various	Sedum, Stonecrop, in variety
Dicentra, Dutchman's Breeches	Sempervivum, Hen and Chickens
Draba, various	Silene, Catchfly
Erinus alpinus	Stachys lanata
Euphorbia, Milkwort	Teucrium, Germander
Ferns, in variety	Thymus, Thyme
Gentiana, Gentian	Trollius, Globeflower
Geranium sanguineum album	Tunica, Coatflower
Geum, Avens	Veronica, Speedwell, dwarf
Grass, Festuca glauca	Vinca, Periwinkle
Evergreens, dwarf various	Viola, various
Gypsophila repens, Dwarf Baby's Breath	Violet, various

PLANTS FOR SUNNY DRY BANKS

PERENNIALS

For descriptions see Perennials.

Alyssum saxatile, Basket of Gold	Helianthemum, Rock Rose
Armeria, Thrift	Oenothera, Evening Primrose
Artemisia, Sage, various	Pentstemons, various
Asclepias	Phlox subulata, in variety
Cacti	Sedum stoloniferum
Cerastium tomentosum	Saponaria, Soapwort
Diathus, pinks, various	Stachys lanata, Woundwort
Gaillardia, Blanket Flower	Yucca
Gypsophila, Baby's Breath	

SHRUBS AND VINES

Caragana, Siberian Pea	Jamesia, Waxflower
Ceanothus fendleri	Lespedeza, Bush Clover
Cercocarpus, Mountain Mahogany	Lonicera, Honeysuckle
Clematis ligusticifolia	Physocarpus, Ninebark
Clematis orientalis	Prunus besseyi, Sand Cherry
Clematis Scotti	Rubus deliciosus, Thimbleberry
Eleagnus, Russian Olive	Rhus trilobata
Holodiscus, Native Spiraea	

PLANTS FOR COLORADO'S SHADE

PERENNIALS

For descriptions see Perennials.

Aconitum, Monkshood	Lilium, Lilies, various
Ajuga, Bugleweed	Lupinus, Lupines
Allium, Flowering Onion	Lysinachia, Loosestrife
Anchusa myosotidiflora	Mazus reptans
Anemone, Windflower	Mertensia, Blue Bells
Aquilegia, Columbine	Myosotis, Forget-me-not
Arctostaphylos uva ursi, Kinnikin- nik	Monarda, Oswego Tea
Aster sub-coeruleus, Himalayan Daisy	Ophiopogon japonicum, Lily-turf
Campanula, Harebell	Pachysandra, Japanese Spurge
Cheiranthus, Wallflower	Platycodon, Balloon Flower
Convallaria, Lily of the Valley	Primula, Primrose, various
Corydalis, Golden Smoke	Phlox divaricata
Cypripedium, Lady's Slipper	Sanguinaria, Bloodroot
Dicentra, Bleeding Heart	Saxifraga, in variety
Digitalis, Foxglove	Sedum (most of them)
Erigeron, Fleabane	Thalictrum, Meadow Rue
Ferns, various	Trillium, Wake Robin
Funkia, Plantain Lily	Trollius, Globe Flower
Gentiana, various	Uvularia, Bellwort
Hemerocallis, Day Lily	Vinca, Periwinkle
	Violet and Viola, various

SHRUBS

For descriptions see Shrubs.

Amelanchier, Shadblow	Hypericum, St. Johnswort
Aralia pentaphyllum	Jamesia americana, Waxflower
Aronia, Chokeberry	Ligustrum, Privet
Berberis, Barberry	Lonicera, Honeysuckle
Berberis repens	Mahonia, Oregon Hollygrape
Buddleia, Butterfly Bush	Ribes, Mountain currant
Calycanthus, Sweetshrub	Rhodotypos kerrioides, Jethead
Cephalanthus, Buttonbush	Rhamus cathartica, Buckthorn
Cotoneaster acutifolia	Rhus canadensis, Fragrant Sumac
Cotoneaster horizontalis	Rubus deliciosus, Thimbleberry
Cornus sibirica, Dogwood	Symphoricarpos racemosus, Snow- berry
Daphne cneorum	Symphoricarpos vulgaris, Coral- berry
Euonymus, Wintercreeper (vine and shrub)	Viburnum dentatum, Arrowwood
Forsythia, Goldenbells	Virburnum lentago, Nannyberry
Genista tinctora	
Hydrangea arborescens	

SPECIAL COLLECTIONS

PERENNIALS FOR THE SMALL GARDEN

6 Delphinium Blue Butterfly	3 Dianthus plumarius mixed
3 Phlox Elizabeth Campbell	5 Iceland Poppy, various
5 Aquilegia coerulea	3 Linum arboreum
3 Anemone myosotidiflora	3 Heuchera sanguinea
5 Himalayan Daisy	5 Nepeta mussini
3 Dwarf Dumbosus Asters	3 Euphorbia cyparissias
1 Peony Marie Jacquin	3 Sweet William, Pink

Collection, \$10.00

FOR YOUR NEW PERENNIAL BORDER

10 Delphiniums, Gold Medal Hybrids	1 Iris Chromylla
6 Phlox Rheinlander	2 Iris Blue Velvet
6 Phlox Frau Antoine Buchner	6 Shasta Daisy Supreme
1 Peony Walter Faxon	3 Aster Hybridus luteus
1 Peony Festiva Maxima	5 Trollius europaeus
2 Iris Spring Maid	10 Iceland Poppy mixed
3 Iris Jacqueline Guillot	5 Veronica amethystina

Collection, \$15.00

ROCK GARDEN SUGGESTIONS

For descriptions see those starred in perennial section

For Your First Attempt

3 Ajuga reptans	3 Primrose, various
3 Campanula carpatia	3 Sedum acre
3 Cerastium various	3 Thymus coccineus
3 Phlox subulata	3 Veronica rupestris
3 Lysimachia nummularia	6 Viola mixed

Collection, \$5.00

For the Miniature Rock Garden—All Gems

3 Aquilegia saximontana	3 Mertensia coriacea
5 Mazus reptans	5 Phlox subulata white
5 Dianthus neglectus	3 Pentstemon Crandallii
5 Arenaria verna caespitosa	3 Primula various
3 Boykinia Jamesii	2 Iris cristata
5 Veronica repens	3 Sempervivum
2 Androsace sarmentosa	3 Sedum lydium

Collection, \$12.00

For Your Shady Rock Garden

5 Aquilegia coerulea	3 Lysimachia nummularia
3 Primula Munstead yellow	3 Dicentra cucullaria
3 Cypripedium parviflorum	5 Myosotis various
5 Ferns, dwarf, various	5 Sedum Aughrim
5 Convallaria, Lily of the Valley	3 Anemone pulsatilla
3 Trollius Europaeus	3 Trillium grandiflorum

Collection \$10.00

CACTI

Echinocereus aggregatus	Opuntia arborescens
gonacanthus	fragilis
viridiflorus	humifusa
Mamillaria vivipara	polyacantha
	rhodantha
	Pediocactus Simpsonii

Any 6 of above for \$2.00

INDEX

	PAGE
Bulbs	32
Evergreens	22
Hedges	29
Perennials	2
Peonies	13
Phlox	14
Plants for Sunny Dry Gardens	33
Plants for Shade	34
Rock Garden Suggestions	33
Roses	27
Roses, Climbing	31
Seeds	31
Shrubs	23
Special Collections	35
Trees	19
Vines	30
Water Plants	31
Miscellaneous	32
Strawberries, Asparagus	
Fertilizer, Soil, Peat	
Bird Baths, Seats	
Labels, Etc.	



Aisles
of
Green

Juniper scopulorum—Silver Cedar
In Upton Gardens

Page 22



Colorado Blue Spruce
In Upton Gardens

Page 22

NOTES

LANDSCAPE DESIGN

Skill in design is as important for your grounds as for your house. Before you decide on location of drives and walks consult our department of Landscape Design. Our sketches of suggested plantings will help your decision as much as trying on a new hat.

Whether naturalistic or formal, large or small, a garden needs a well-defined plan.

If you do your own planting we will visit your garden to make suggestions for improvement in design and in horticultural details. The fee for this service is in proportion to size of grounds. Minimum fee \$5.00.

MAINTENANCE

We offer Maintenance Service for discriminating home owners: spraying, cultivating, pruning, edging, staking, dividing, transplanting and all that goes to make the difference between an attractive well-kept garden and a neglected one.

HARDY PLANTS

UPTON GARDENS and Nursery are more than a mile high on the east slope of Pikes Peak subject to extreme cold. Thus the plants we grow are absolutely hardy, "Hardy as Pikes Peak."

Spring is later here than through the middle west and the south, so many shrubs and perennials are backward enough to ship as late as mid-May.

