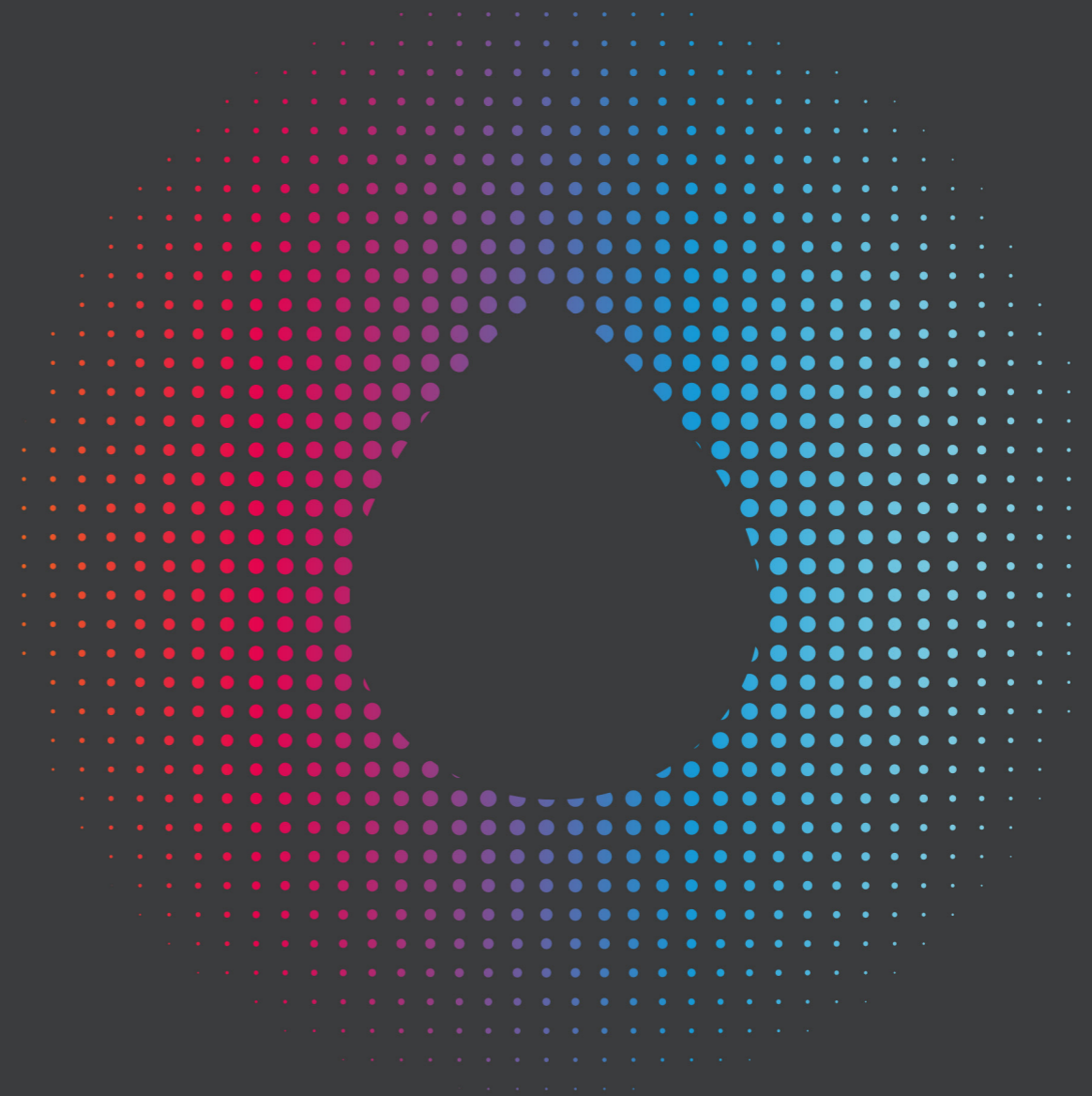
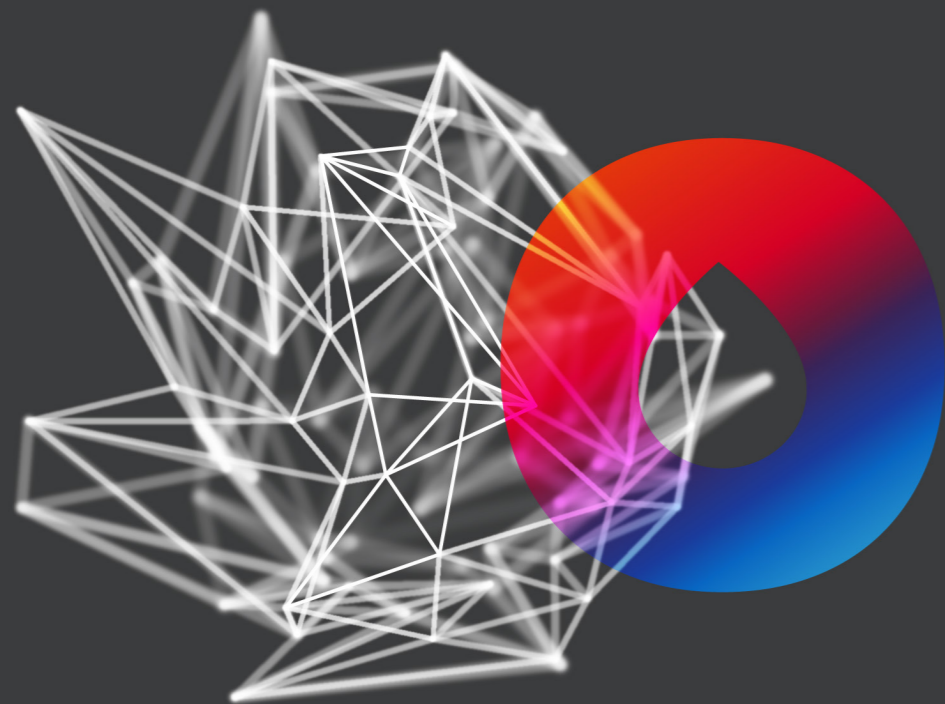


# Photocentric



3D printers and resins for every application

Product Catalogue

Photocentric

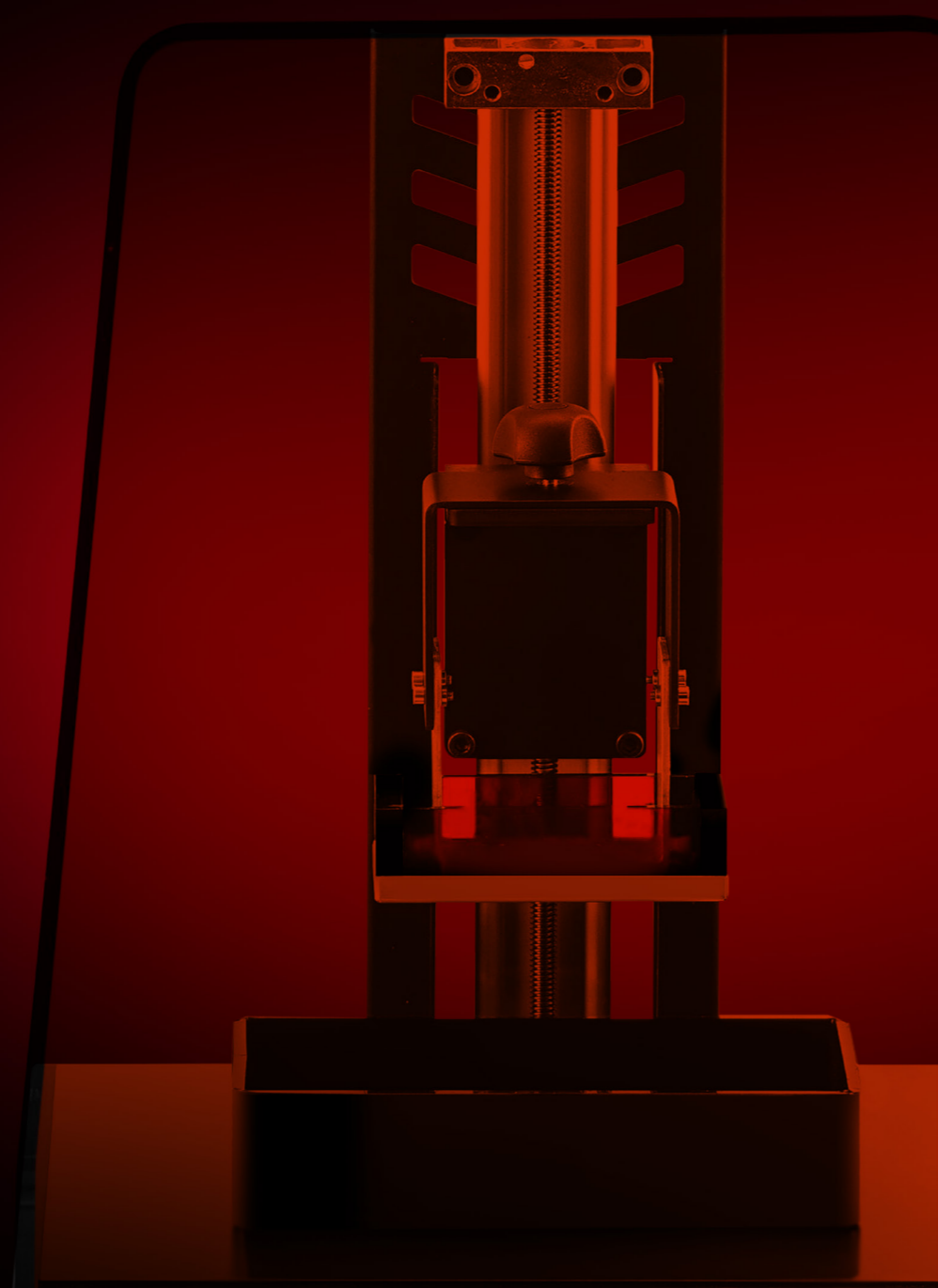
UK - Cambridge House, Oxney Road, Peterborough, PE1 5YW. +44 1733 349937  
USA - 2205 West Parkside Lane, Phoenix, 85027, AZ. (623) 581-3220



[www.photocentricgroup.com](http://www.photocentricgroup.com)



# Liquid Crystal PRECISION 1.5



## The Award-Winning Desktop Printer

With its patented daylight LCD technology and in-house developed range of performance resins, Precision turns concepts into reality at costs and speeds previously unattainable

### Desktop 3D Printer

Creating Accurate, Precise and Highly Detailed Printed Parts. Delivering a combination of value, speed and accuracy; LC Precision 1.5 is the desktop printer of choice for designers, engineers, jewellers and dental technicians worldwide.

Print small and intricate models, up to medium sized parts. It's in the name- Precision is made for all applications where attention to detail and accuracy are paramount.

### Professional, Reliable Plug-n-Play Technology

High-Resolution Liquid Crystal Display

An ultra-high resolution LCD panel; the integral part to all Photocentric printers. The 5.5" LCD display delivers a 2k resolution, enabling fast, reliable and precise printing.

### Fast and Simple Printing with Print Flow

Open source and easy to use. Upload your files via USB and navigate your way through the print process using the

### integrated 7" touchscreen.

Quick Print Turnaround with Pre-Homed Platform  
Get straight to printing. With the build platform factory-homed, there is no need to re-home the platform.

### Reliable, High-Quality Electronics

Printer and electronics are manufactured in the UK.

### Two Vat Options

Reskinning is now optional with our low-cost disposable vat system. Two plastic vats are provided with printer or buy our new aluminium one. You decide, buy new or re-skin.

### Precision Metal Vat

Smooth, Sleek and Simple

The aluminium precision engineered vat gives enhanced user experience and print performance. Designed for both Precision and Precision 1.5 desktop printers.

Solid, sturdy and durable design

Twin metal gasket design makes it simple to re-skin and achieve perfect vat film tension.

Easy to re-skin, small plastic area means vat maintenance costs are minimal.

## SPECS

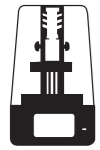
<b>LCD specification</b>	5.5" (2560 x 1440 px)	<b>Connectivity</b>	USB Port
<b>Build Volume</b>	121 x 68 x 160 mm 4.8 x 2.7 x 6.3 in	<b>Dimensions</b>	380 x 350 x 580 mm 15 x 13.8 x 22.8 in
<b>Layer Thickness</b>	25, 50, 100 microns 0.001, 0.002, 0.004 inches	<b>Weight</b>	15 Kg (33 Lbs)
<b>XY Pixel Density</b>	47 µm	<b>Software</b>	Photocentric Studio
<b>Cure Speed</b> (at 100 µm dependant on resin)	4-11 sec/layer	<b>Power requirements</b>	100-240 V, UK/USA/EU plug

1 Year warranty

## Pack contents

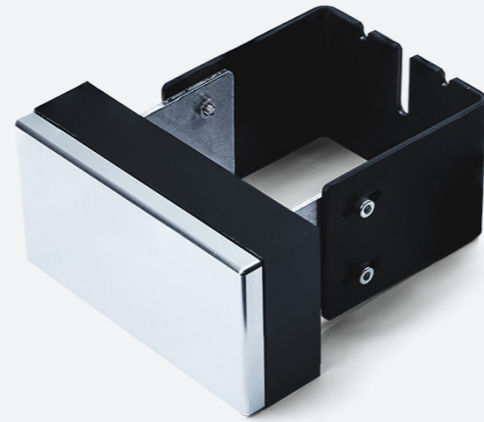
1x Printer Hood, 1x Pre-homed Platform, 1xPower Supply, 1x Power Adaptor, 1x 3mm Allen Key, 2x Disposable Vat, 5x Paper Filter, 1x Funnel, 1x Spatula, 2x Blue Nitrile Gloves- Medium, 1x 250gr of Daylight Resin, 1xPrint Sample, 1x Spray Bottle, 1x Vat Cleaning Tool, 1x USB including; instructions, CE Certificate, MSDS, Photocentric Studio, software/license number





## LIQUID CRYSTAL PRECISION 1.5 PRE-HOMED BUILD PLATFORM

The build platform is factory homed. Now there is no need to home the build platform before every print.



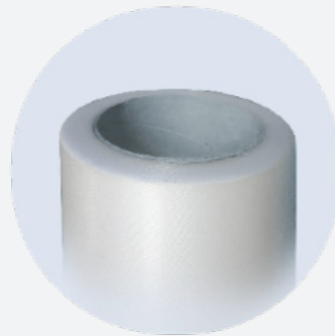
## LC PRECISION SCREEN PROTECTOR

Screen protector for the Liquid Crystal Precision and Precision 1.5 to prevent the screen from damage from resin spills.



## VAT FILM

10 sheets of vat film is specialised low surface energy film, with high clarity and exceptionally low refraction index.



## VAT FILM TAPE

Tape for fixing your vat film when re-skinning the Liquid Crystal Precision vat.



## FILTERS

Box of 25 filters.  
Use to filter resin when pouring back into container of origin after use.



## LIQUID CRYSTAL PRECISION DISPOSABLE VAT X PACK OF 5

New easy to use and tense Vat for Liquid Crystal Precision, suitable for the Liquid Crystal Precision only. Vat is supplied complete with tensioned film ready for use.



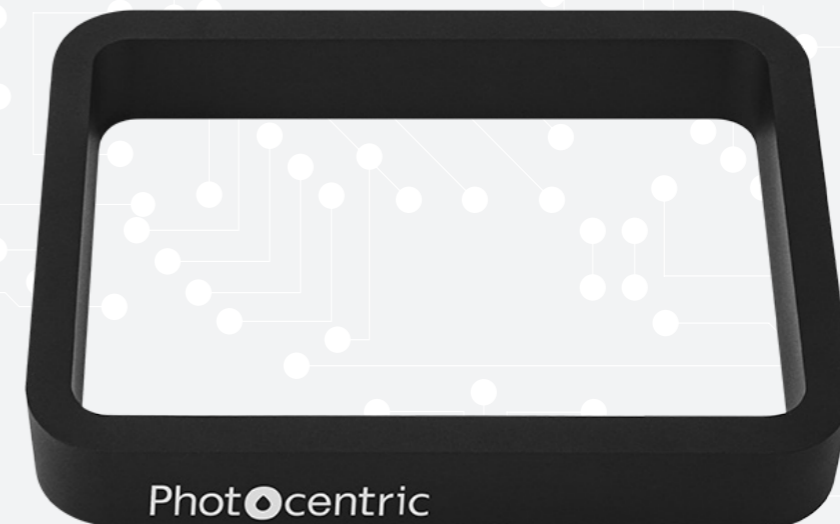
## PRECISION METAL VAT

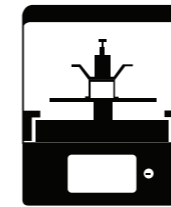
Smooth, sleek and simpler to use. The new LC Precision metal vat has been designed as an alternative to the existing disposable vat to make the re-skinning process easier and cheaper, whilst also achieving the perfect film tension every time. It is an ideal addition to Precision and Precision 1.5, making it a perfect step closer to expanding your additive manufacturing line.

Please note, this new vat will work on the Precision 1 and Precision 1.5 however if you are printing chunkier models with a larger surface area then the vat will need to be fixed down, we recommend using tape or elastic clamps for this.

### Key Benefits include:

- Solid metal design is providing an improved user experience and increased durability
- Twin metal gasket design makes it simpler to re-skin and gain perfect vat film tension every time
- New and sturdier design ensures the usability of the vat film is extended in comparison to using disposable vat
- Less vat film is required, making it cheaper to maintain in the long run
- Smaller surface area makes it easier to store
- Compatible with Precision / 1.5





# Liquid Crystal DENTAL

## Extremely accurate, 3D printer for dentistry

LC Dental is a medium format printer specifically tailored to meet the needs of the dental industry. Utilising the latest cutting-edge monochrome LCD technology and patented twin lift peel system, LC Dental delivers very high productivity for dental and orthodontic labs.

### Cutting-Edge Monochrome LCD Technology

The world's first custom built monochrome LCD printer, designed to deliver high resolution, fast printing and extremely long life. All-blue subpixel technology is 3x faster than conventional LCD technology. LC Dental's custom monochrome screen has been designed specifically to operate safely at 410nm.

With an enormous build volume of 310x174x200mm, LC Dental also provides an xy accuracy of 80 microns. The custom light engine ensures even cure across the entire build area, creating print accuracies down to 50 microns.

### Open Source Printer. More Material Choice.

The advanced technology of LC Dental's screen and light engine enables you to use whatever resin you like; either Photocentric's catalogue of materials finely tuned to the LC Dental printer or you can use LCD, DLP & Laser materials available from third party suppliers.

### Applications:

Orthodontic Models, Prosthodontic Models, Surgical Guides, Orthodontic Splints.

### Silicone Storage Ledge

For easy storage use the silicone pad on the top of LC Dental to store tools, platforms or spare VAT.

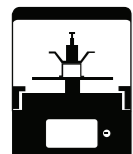
## SPECS

<b>LCD specification</b>	14" (3840x2160 px)	<b>Connectivity</b>	USB, Wireless, Ethernet
<b>Build Volume</b>	310 x 174 x 200 mm 12.2 x 6.85 x 7.9 in	<b>Dimensions</b>	605 x 491 x 419 mm 23.8 x 19.3 x 16.5 in
<b>Layer Thickness</b>	25, 50, 100, 150, 200 microns 0.001, 0.002, 0.004, 0.006, 0.008 inches	<b>Weight</b>	38 Kg (83.8 Lbs)
<b>XY Pixel Density</b>	80 µm	<b>Software</b>	Photocentric Studio
<b>Cure Speed</b> (at 50 µm dependant on resin)	2-6 sec/layer	<b>Power requirements</b>	100-240 V, UK/USA/EU plug

1 Year warranty

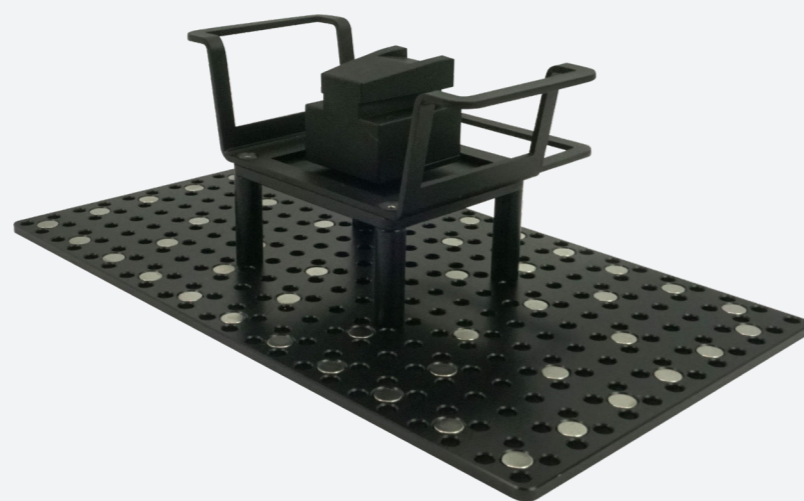
### Pack contents

USB stick- 16Gb (Photocentric License key included on USB), 1kg Sample Resin, 1x Pozi1 Screwdriver, 1x Pozi2 Screwdriver, 2x Vat Film + 2x set of Vat Gaskets, 5x Paper Filters, 1x Funnel, 1x Scraper, 1x Soft Spatula, 2x Blue Nitrile Gloves- Medium, 1x Vat Cleaning Tool, 1x Power Cord, 1x Wi-Fi Dongle, 1x Silicone Mat, 1x Platform Hanger, 1x 5mm Allen Key, 1x 3mm Allen Key.



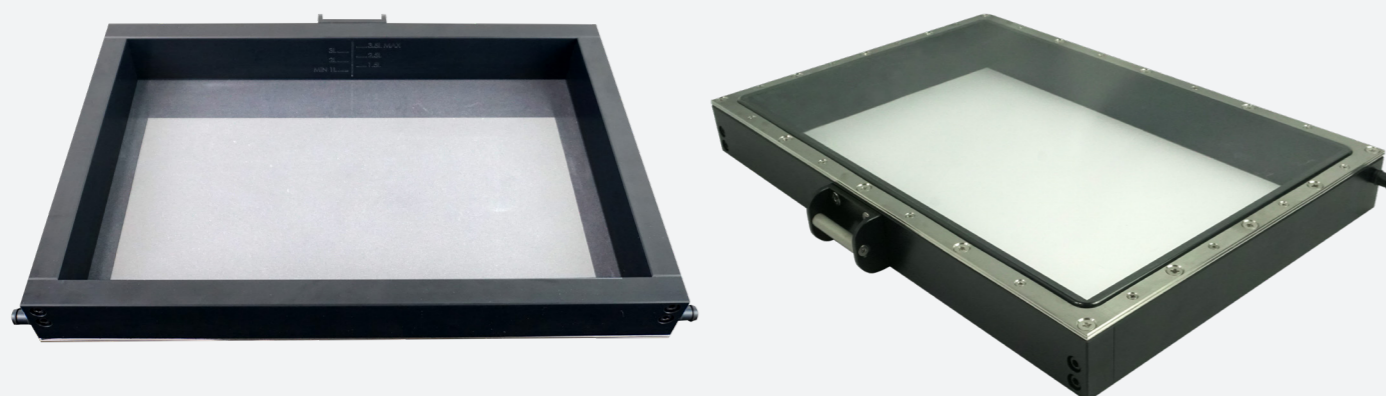
## LIQUID CRYSTAL DENTAL PLATFORM

Liquid Crystal Dental replacement platform assembly; you can order this item when you want to have a spare platform or if you have damaged the current platform.



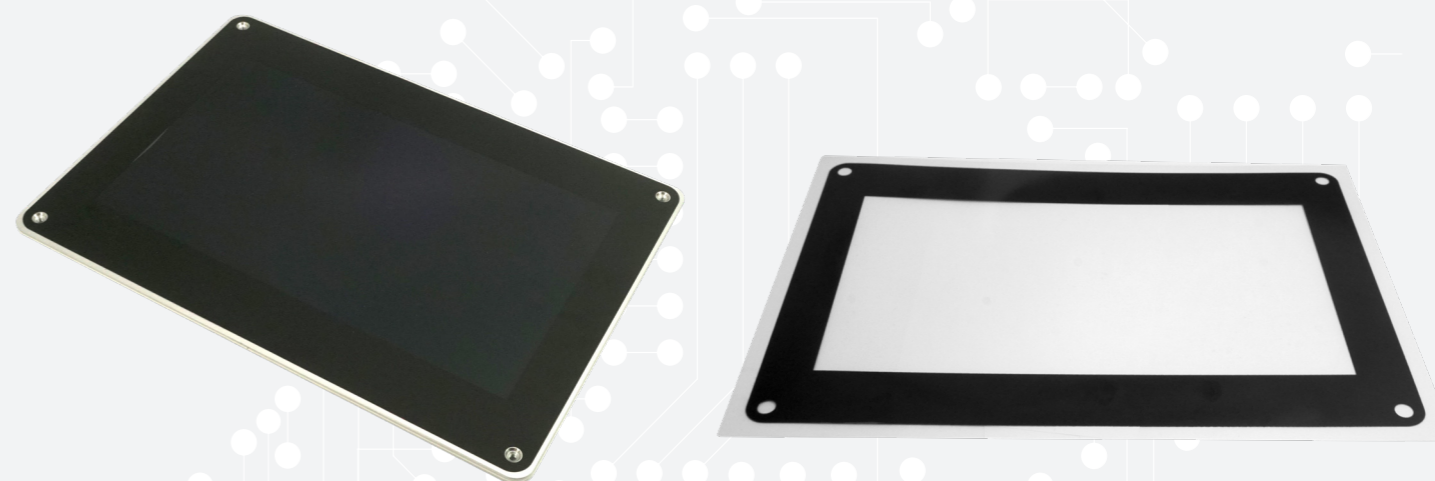
## LIQUID CRYSTAL DENTAL VAT

Liquid Crystal Dental replacement vat assembly; order this item increase your workflow working with multiple materials without the need to clean out the vat.



## LIQUID CRYSTAL DENTAL SCREEN

Screen protector for the LC Dental printer, replace this screen protector to keep your screen clean and free from any damage including resin spillages.



## LIQUID CRYSTAL MAGNA VAT FILM X 5 WITH GASKETS

This pack contains five sheets of 100 micron FEP film, cut to the correct size for your Liquid Crystal Dental vat. We recommend that you re-skin your vat after 10 times of printing, or if any visible damage is detected. Also included in this pack are five vat gaskets, we recommend that you change the gasket every time you re-skin your vat.





Liquid Crystal  
**MAGNA**

## Professional, Reliable Plug-N-Play Technology

### The largest LCD 3D printer in the world

Enabling custom mass manufacture and large component printing. From dentistry to industrial product design and manufacture, the LC Magna's 23.8" LCD screen and 510 x 280 x 350mm build volume manages to create both very large objects and incredible detail on small ones. Delivering print results previously impossible using traditional manufacturing techniques.

### 4K Ultra High Definition Display

LC Magna's ultra 4K LCD screen delivers accuracy previously unachievable with large format (SLA) print solutions. xy pixel pitch of 137 micron will deliver higher resolution due to benefits of anti-aliasing. Scanned accuracy of +/-100 microns can be obtained across the bed.

### Quick release clamps

Designed to enhance user experience our new vat clamps make it easier to lock the resin vat in place.

### Vat

Built in handles, pouring spouts and etched depth gauge enhance user experience and reduce wastage.

### Large build platform

The 510 x 280 x 350mm is the largest commercially available LCD printer. The LC Magna suits a variety of applications and different industries. From prototyping to dentistry; from many small parts to large objects.

### Built to deliver consistent results over time

The printer is manufactured in the UK using the highest engineered materials possible, setting new standards in printer quality and reliability. Our patented blow-peel technology all but eliminates the forces that come into play with large build volumes and has been stress tested with the most demanding 15Kg solid builds.

### GUI

The 7" touch screen interactive interface gives full functionality and real time user information on print status and function. Network/Wi-Fi connectivity built in.

### Performance

#### Rapid Layer Cure Times

Our expertise in resin material development and print hardware delivers the complete solution for every industry. With expertise in house from our team of chemists, software engineers, mechanical engineers and technicians we have managed to achieve rapid print times building functional materials for a variety of different applications. Cure times of just 2 seconds per layer are achievable with LC Magna (resin dependent).

#### Dentistry

Gold standard in Dental Model printing. The large build volume of the LC Magna, coupled with the printer's ability to create highly detailed parts, makes the LC Magna the perfect solution for labs wanting to make dental aligners.

## SPECS

<b>LCD specification</b>	23.8" (3840x2160 px)	<b>Connectivity</b>	USB, Wireless, Ethernet
<b>Build Volume</b>	510 x 280 x 350 mm 20 x 11 x 13.8 in	<b>Dimensions</b>	850 x 650 x 950 mm 33.4 x 25.6 x 37.4 in
<b>Layer Thickness</b>	25, 50, 100, 150, 200 microns 0.001, 0.002, 0.004, 0.006, 0.008 inches	<b>Weight</b>	110 Kg (242.5 Lbs)
<b>XY Pixel Density</b>	137 µm	<b>Software</b>	Photocentric Studio
<b>Cure Speed</b> (at 100 µm dependant on resin)	3-8 sec/layer	<b>Power requirements</b>	100-240 V, UK/USA/EU plug

1 Year warranty

### Pack contents

USB stick- 16Gb (Photocentric License key included on USB), 2kg of Magna Dental Model White Resin, 2kg of Magna Hard Black, 1x Pozi1 Screwdriver, 1x Pozi2 Screwdriver, 2x Vat Film + 2x Set of Vat Gaskets, 5x Paper Filters, 1x Funnel, 1x Scraper, 2x Vat Seals, 2x Blue Nitrile Gloves- Medium, 1x Vat Foam Cleaning Mat, 1x Vat cleaning tool, 1x Power Cord, 1 x Wi-Fi Dongle, 1 x Extraction Spigot 100mm, 4x Pipette, 1x Spray bottle.

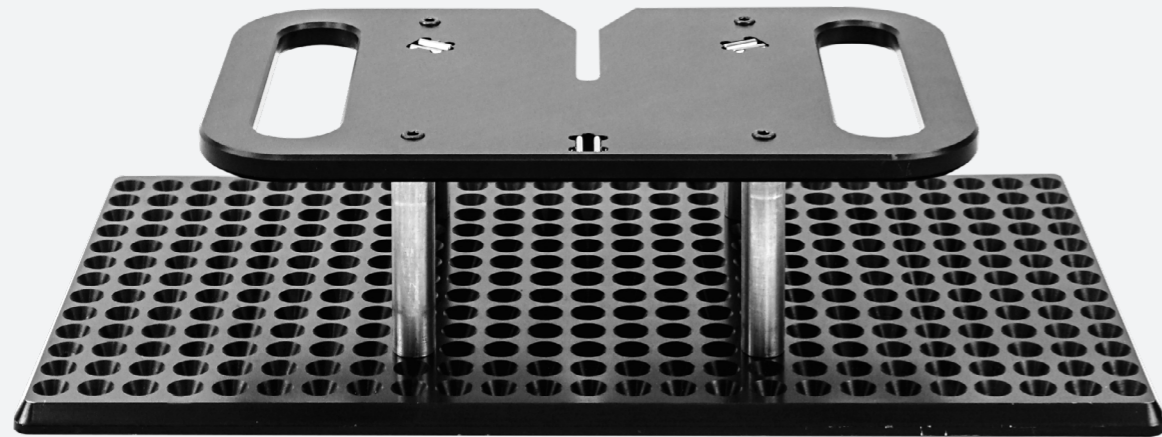


Liquid Crystal  
**MAGNA**

# Ancillaries

## LIQUID CRYSTAL MAGNA PLATFORM ASSEMBLY

Liquid Crystal Magna replacement platform assembly; you can order this item when you want to have a spare platform or if you have damaged the current platform.



## LIQUID CRYSTAL MAGNA VAT ASSEMBLY

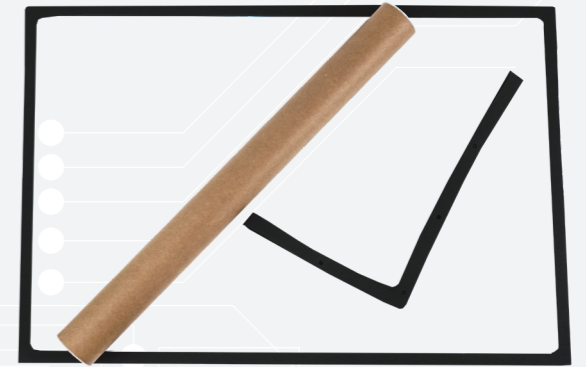
Liquid Crystal Magna replacement vat assembly; you can order this item when you want to have a spare vat or if you have damaged the current vat.



## LIQUID CRYSTAL MAGNA VAT FILM X 5 WITH GASKETS

This pack contains five sheets of 100 micron FEP film, cut to the correct size for your Liquid Crystal Magna vat. We recommend that you re-skin your vat after 10 times of printing, or if any visible damage is detected.

Also included in this pack are five vat gaskets and five vat edge seals. We recommend that you change both each time you re-skin your vat.



## LC MAGNA VAT CLAMPS

Reduce time, achieve consistent performance and eliminate error.



## BOX OF 25 FILTERS

Box of 25 filters. Use to filter resin when pouring back into container of origin after use.





# 3D Resins



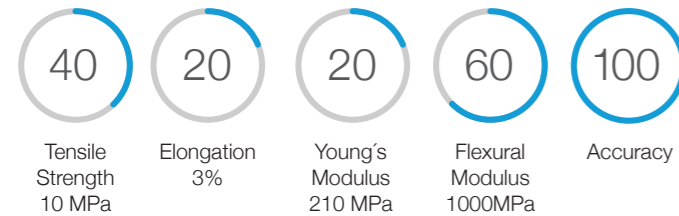
# Daylight Resins

COMPATIBLE WITH THE LIQUID CRYSTAL HR, HR2 & LC10"

## Daylight Castable

Our Daylight Castable is specially formulated to work with the Liquid Crystal 10, HR and HR2 printers. Photocentric Daylight Castable creates highly accurate jewellery parts for investment casting. Printed parts exhibit fine detail and provide smooth, crisp finish on the cast parts. Virtually no ash or residue and limited expansion.

### Colours



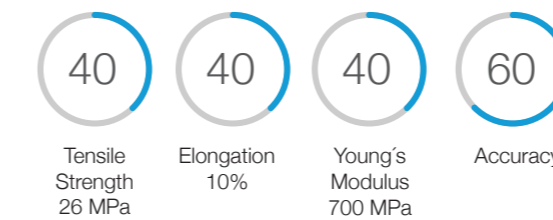
Score out of 100 when compared to other resins from our range



## Daylight Firm

Our Daylight Firm resin creates parts that hold their shape while also being able to bend and flex slightly without snapping. Resin delivers mechanical properties similar to polypropylene.

### Colours



Score out of 100 when compared to other resins from our range



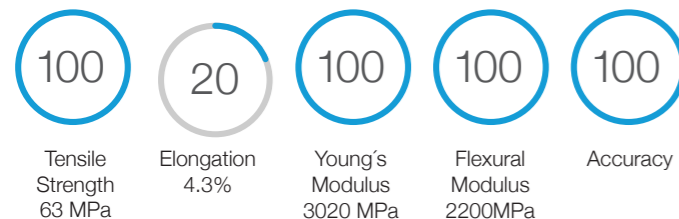
## Daylight Dental Model

Our Daylight Dental Model resin has been formulated to create high resolution dental models. This resin has been developed in conjunction with dental technologists to derive an optimal colour, feel and working characteristics. Ideal for orthodontic, study and working models.

### Compatible Printers:

LC Precision, LC Precision 1.5, LC HR2, LC HR, LC 10"

### Colours



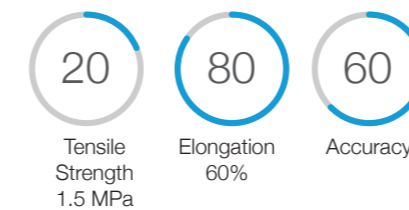
Score out of 100 when compared to other resins from our range



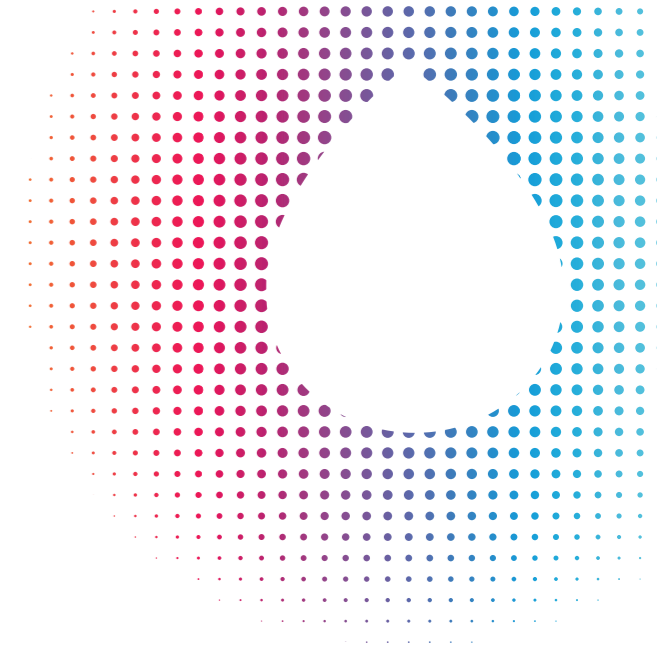
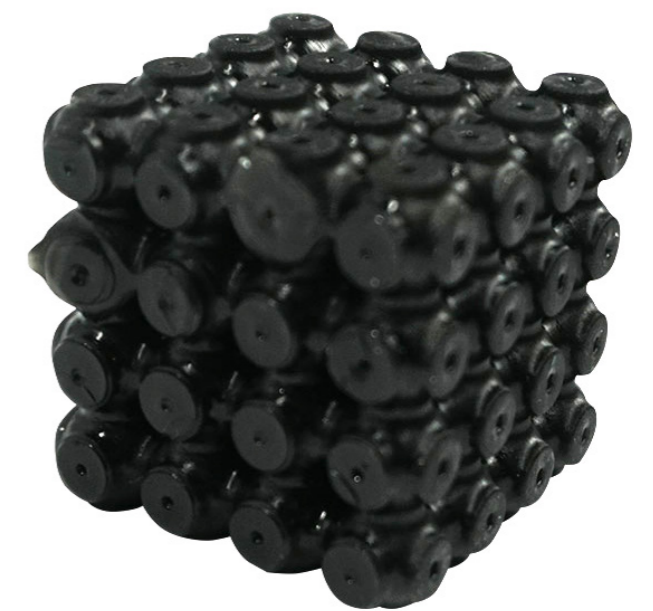
## Daylight Flexible Resin

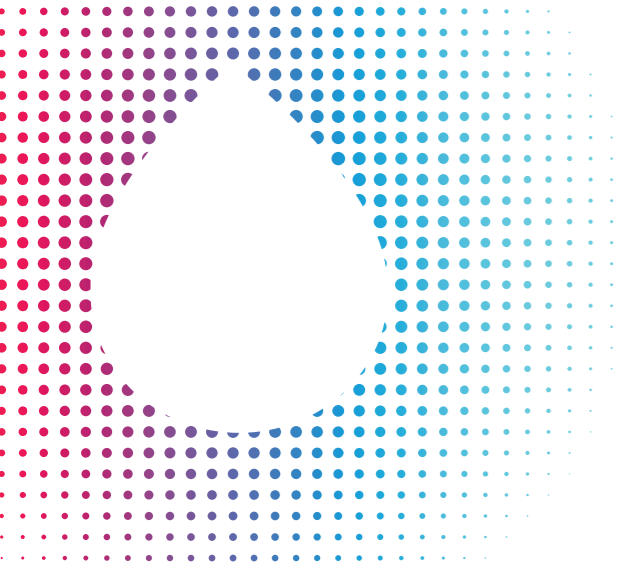
Our Daylight Flexible resin produces soft, flexible parts. Objects can be stretched without snapping or breaking. Lattice or hollow structures can be squashed and will return to their original shape afterwards.

### Colours



Score out of 100 when compared to other resins from our range

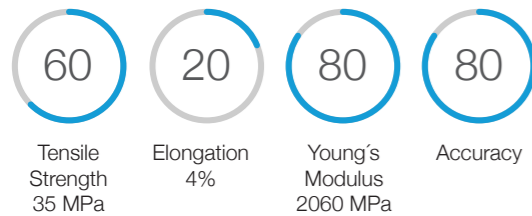




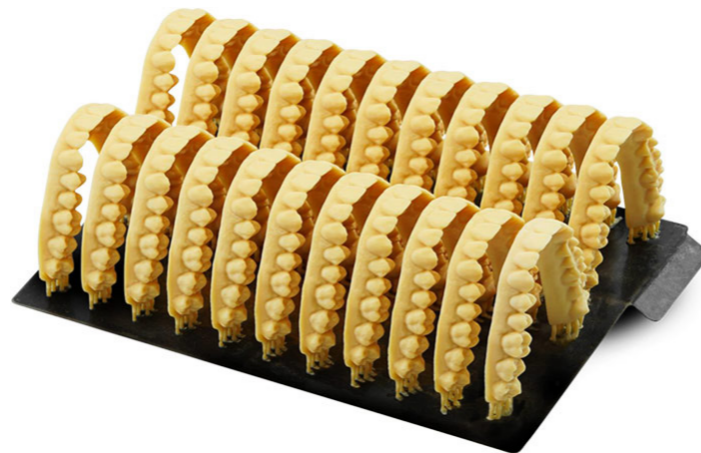
## Daylight Hard

Our Daylight Hard resin will make parts exhibiting crisp detail, high stiffness and high hardness. Parts won't deform when pressure is applied.

### Colours



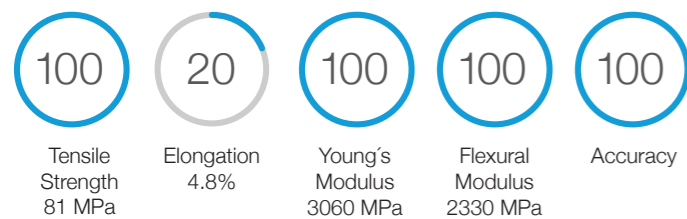
Score out of 100 when compared to other resins from our range



## Daylight High Tensile

Our Daylight High Tensile resin is ideal for making objects with high tensile strength and hardness. Objects cannot be bent or compressed easily and will withstand considerable force without deflection.

### Colours



Score out of 100 when compared to other resins from our range



## DAYLIGHT

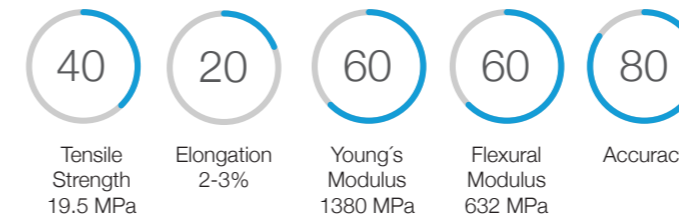
# Daylight Precision Resins

COMPATIBLE WITH THE LIQUID CRYSTAL PRECISION AND PRECISION 1.5

## Daylight Precision Cast

Our Daylight Precision Castable creates highly accurate jewellery parts for investment casting. Printed parts exhibit fine detail and provide smooth, crisp finish on the cast parts. Virtually no ash or residue and limited expansion.

### Colours



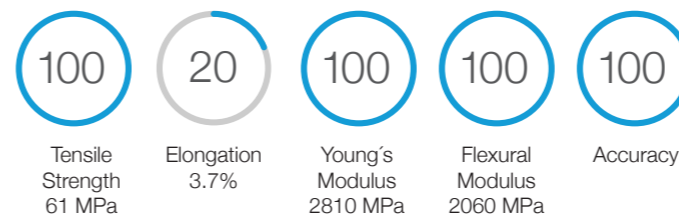
Score out of 100 when compared to other resins from our range



## Daylight Precision Concept

Our Daylight Precision Concept has been formulated for printing high definition jewellery parts with a smooth surface finish, high tensile strength and durability. The resin allows designers to showcase highly accurate and detailed jewellery models. The resin can be printed rapidly enabling prototyping and review on customer's hands.

### Colours



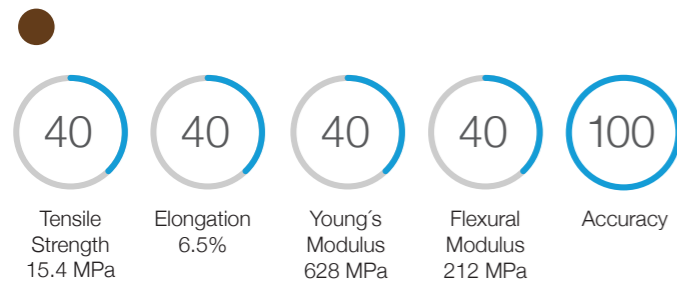
Score out of 100 when compared to other resins from our range



### Daylight Precision Dental Castable

Our Precision Dental Castable is ideal for creating highly accurate castable items such as crowns, bridges and partial denture bases. The resin has been formulated to burn evenly at regularly increasing temperature stages to reduce gas pressure in the cast and provide almost no ash content.

**Colours**



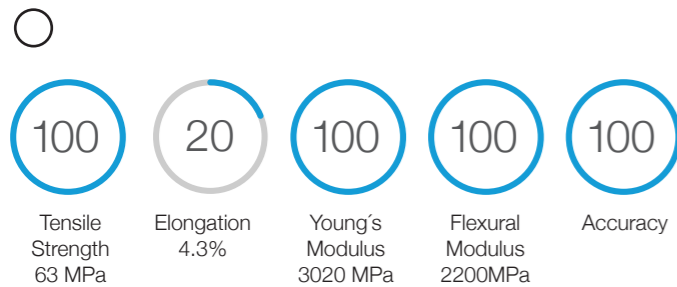
Score out of 100 when compared to other resins from our range



### Daylight Dental Model

Accurate, high resolution models especially for dental work can be created using our Dental Model resin. Ideal for Orthodontic, study, and working models and created in collaboration with Dental Technologists to ensure optimal colour, feel and working characteristics.

**Colours**



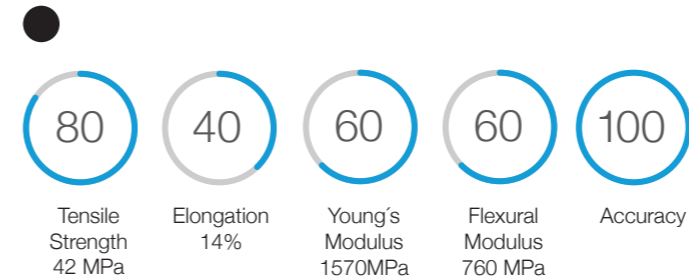
Score out of 100 when compared to other resins from our range



### Daylight Precision Durable

Our Daylight Precision Durable resin is ideal for 3d printing durable, strong objects that can be bent without breaking. Thick objects are stiff but can be made to bend and flex under strain and will return to their original shape. Daylight Precision durable can be used for the fabrication of functional parts requiring a higher impact strength and durability.

**Colours**



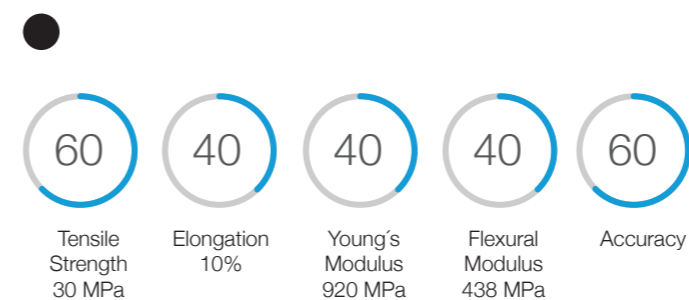
Score out of 100 when compared to other resins from our range



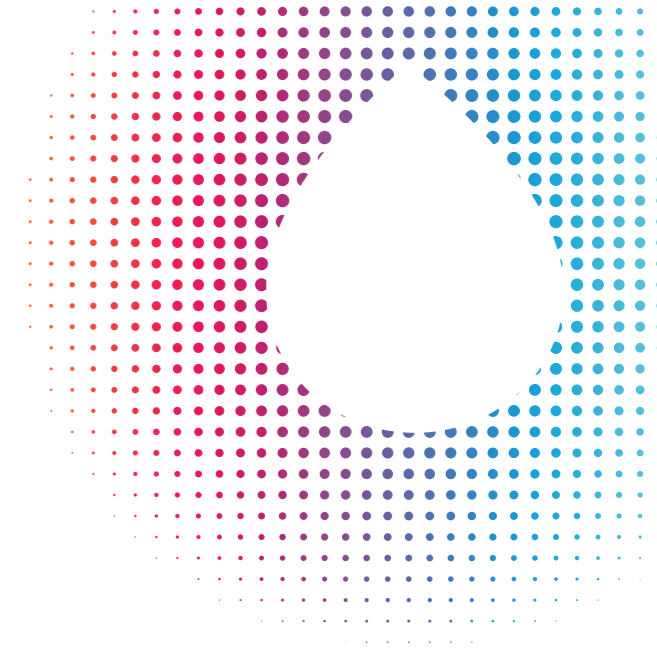
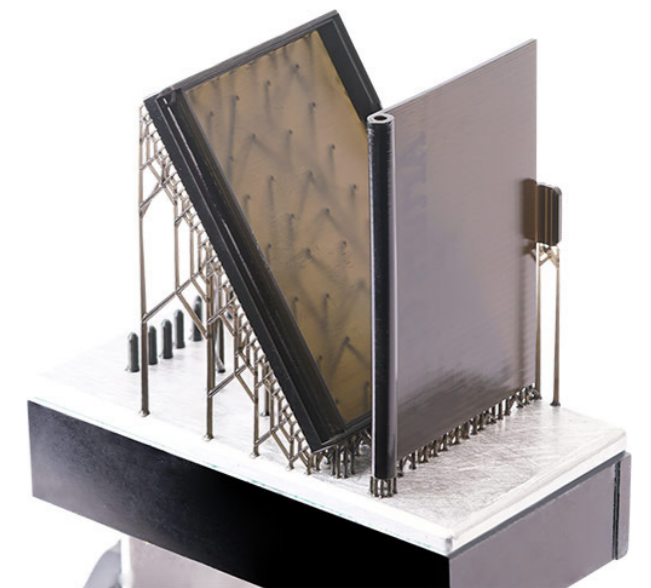
### Daylight Precision Firm

Our Daylight Precision Firm resin creates parts that hold their shape while also being able to bend and flex slightly without snapping. Resin delivers mechanical properties similar to polypropylene.

**Colours**



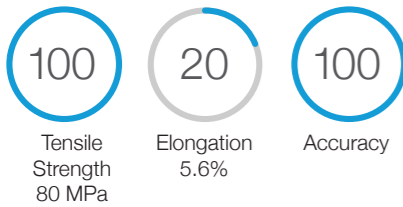
Score out of 100 when compared to other resins from our range



## Daylight Precision Hard

Our Daylight Precision Hard resin will make parts exhibiting crisp detail, high stiffness and high hardness. Parts won't deform when pressure is applied.

### Colours



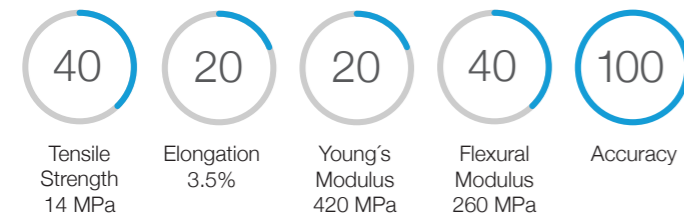
Score out of 100 when compared to other resins from our range



## Daylight Precision Model

Daylight Precision Model resin has been developed to specifically enable prototyping highly detailed objects, such as figurines and jewellery models. The printed parts can be easily painted and have a dry and smooth surface finish.

### Colours



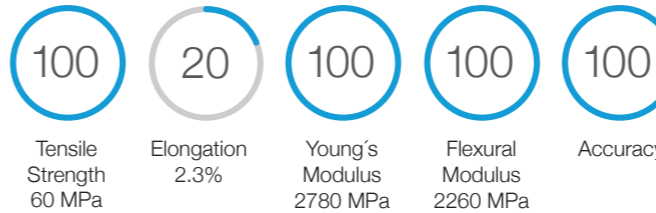
Score out of 100 when compared to other resins from our range



## Daylight Precision Mould

Our Daylight Precision Mould is ideal for the creation of silicone rubber moulds with high resolution. Parts can withstand temperatures of up to 180°C and the pressure created in vulcanisation. Parts exhibit high strength and smooth surfaces.

### Colours



Score out of 100 when compared to other resins from our range

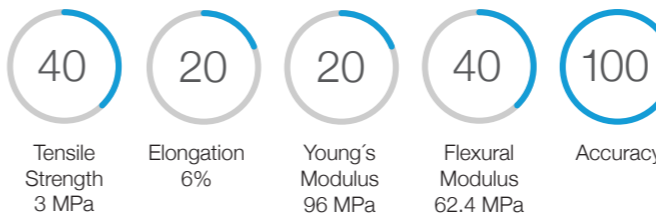


## Daylight Precision Skin Safe Firm

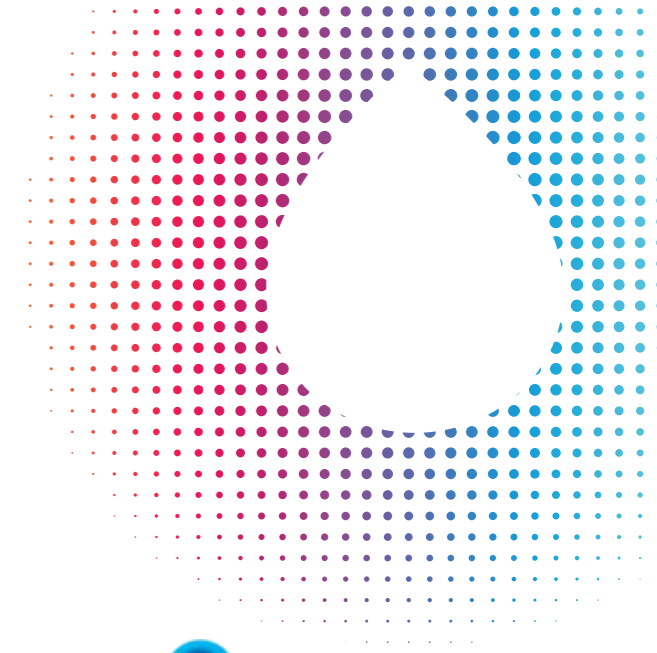
Our Daylight Precision Skin Safe resin is one of the first completely label-free resins for 3D printing. It is non-toxic, non-irritant and doesn't cause allergic reactions. It is perfect for the education sector, allowing children to safely learn about 3D printing. Final parts are dry to touch, firm, smooth and have high detail.

**Note:** Skin safe is non-irritant and non-skin sensitising. If you are already sensitised to acrylates, you may still get irritation from Skin Safe resin.

### Colours



Score out of 100 when compared to other resins from our range



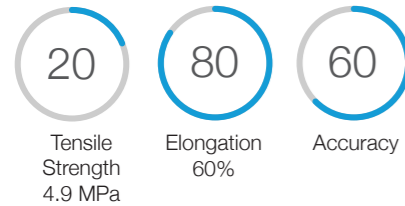
# Daylight Pro Resins

COMPATIBLE WITH THE LIQUID CRYSTAL PRO

## Daylight PRO Flexible

Our Daylight Pro Flexible will make parts which can be stretched without snapping or breaking, making this resin ideal for flexible applications. Lattice or hollow structures can be bent or compressed and return to their original shape afterwards.

### Colours



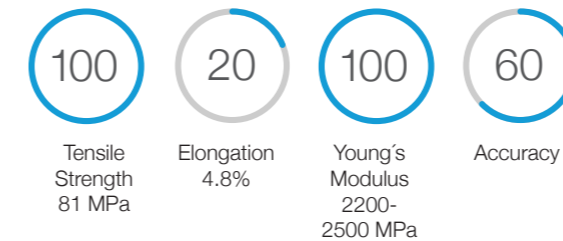
Score out of 100 when compared to other resins from our range



## Daylight PRO High Tensile

Our Daylight Pro High Tensile is ideal for making objects with high tensile strength and hardness. Objects cannot be bent or compressed easily and will withstand considerable force without deflection.

### Colours



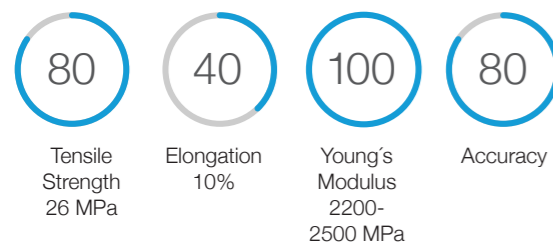
Score out of 100 when compared to other resins from our range



## Daylight PRO Hard

Our Daylight Pro Hard resin makes strong, accurate parts with low shrinkage. It is suitable for making prototype parts which will exhibit crisp detail, high stiffness and high hardness. Parts won't deform when pressure is applied.

### Colours



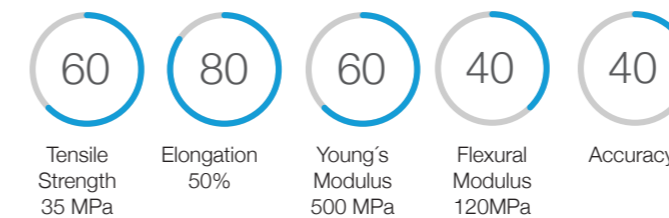
Score out of 100 when compared to other resins from our range



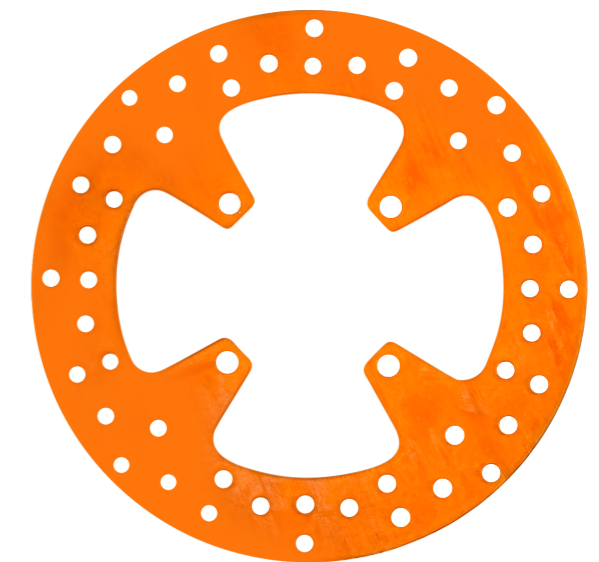
## Daylight Pro Tough

Our Daylight Pro Tough resin will make extremely durable and resilient parts that are strong, rigid and capable of bending and flexing without cracking. The 3D printed objects can be deflected using force, but will return to their original shape afterwards.

### Colours



Score out of 100 when compared to other resins from our range



# Daylight Magna Resins

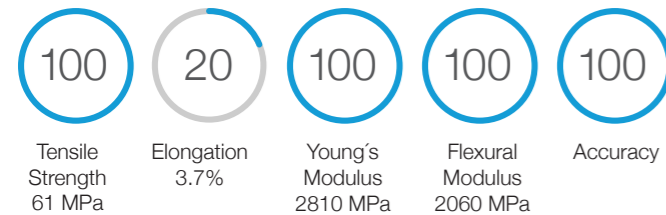
COMPATIBLE WITH THE LIQUID CRYSTAL MAGNA



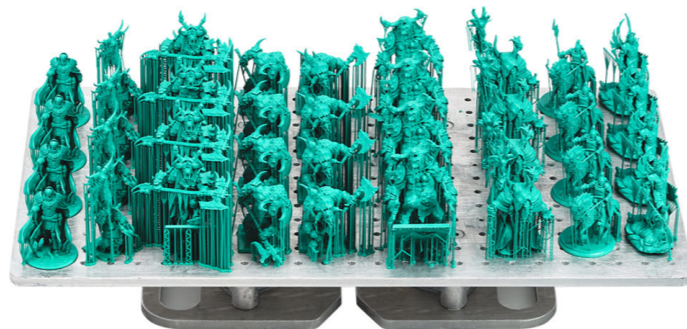
## Daylight Magna Concept

Our Daylight Magna Concept resin brings digital model figurines to life. Jewellery prototypes or detailed figurines will be strong, durable and have finely detailed smooth surfaces. Printed prints can be painted.

### Colours



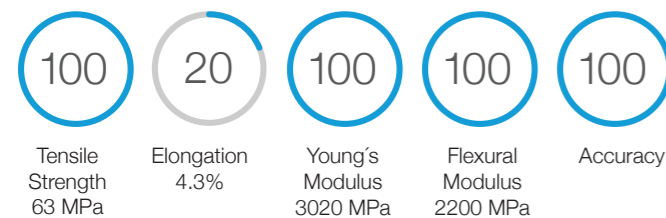
Score out of 100 when compared to other resins from our range



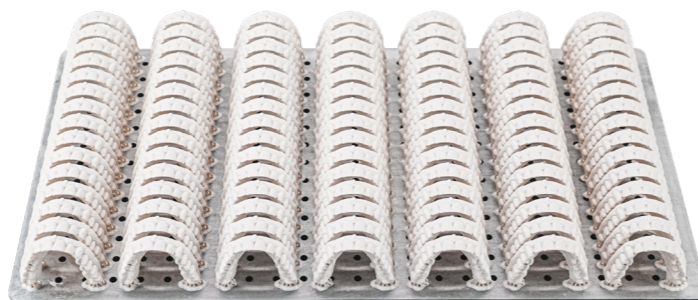
## Daylight Magna Dental Model

Our Daylight Magna Dental Model resin has been formulated to create high resolution dental models, with very fast printing and post exposing. This resin has been developed in conjunction with dental technologists to derive an optimal colour, feel and working characteristics. Ideal for orthodontic, study and working models.

### Colours



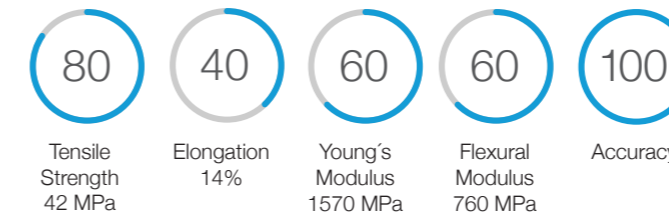
Score out of 100 when compared to other resins from our range



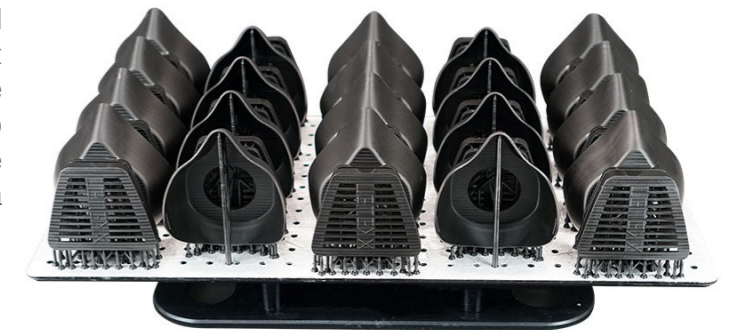
## Daylight Magna Durable

Our Daylight Magna Durable resin is ideal for 3d printing durable, strong objects that can be bent without breaking. Thick objects are stiff but can be made to bend and flex under strain and will return to their original shape. Daylight Magna durable can be used for the fabrication of functional parts requiring a higher impact strength and durability.

### Colours



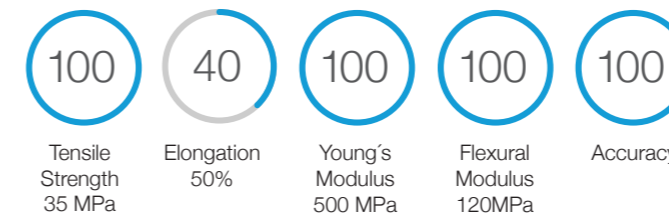
Score out of 100 when compared to other resins from our range



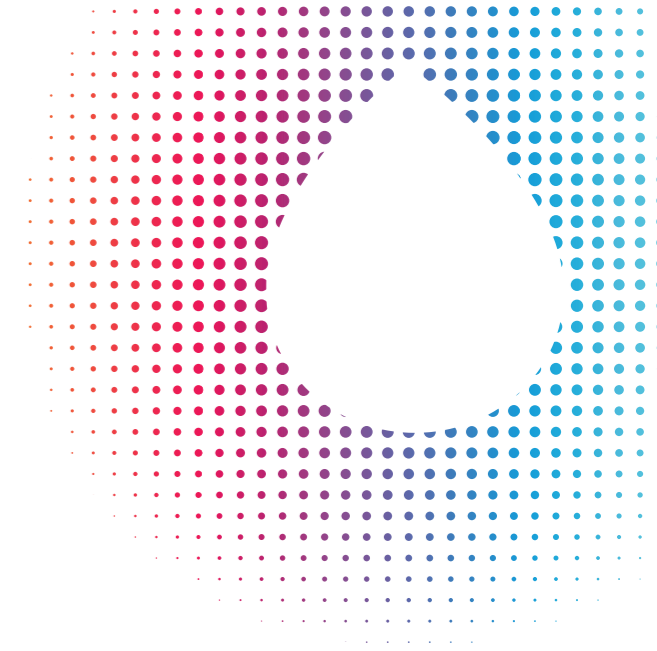
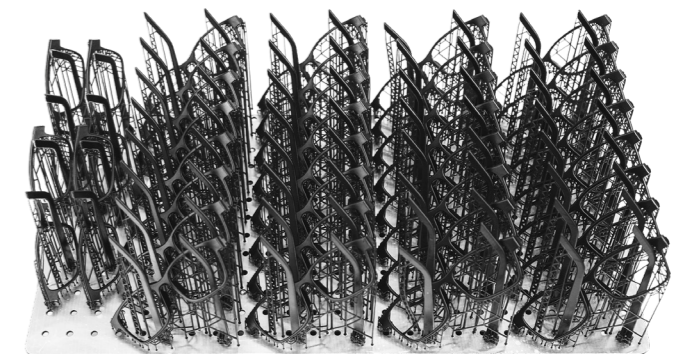
## Daylight Magna Hard

Our Daylight Magna Hard resin will make parts exhibiting crisp detail, high stiffness and high hardness. Parts won't deform when pressure is applied.

### Colours



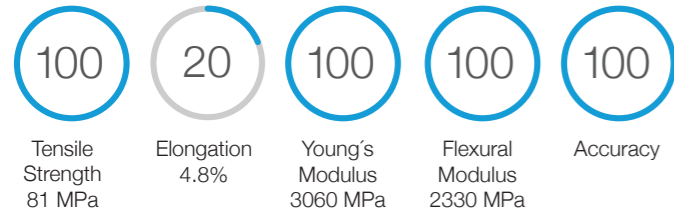
Score out of 100 when compared to other resins from our range



## Daylight Magna High Tensile

Our Daylight Magna High Tensile resin is ideal for making objects with high tensile strength and hardness. Objects cannot be bent or compressed easily and will withstand considerable force without deflection.

### Colours



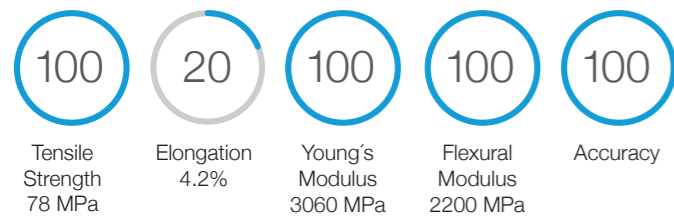
Score out of 100 when compared to other resins from our range



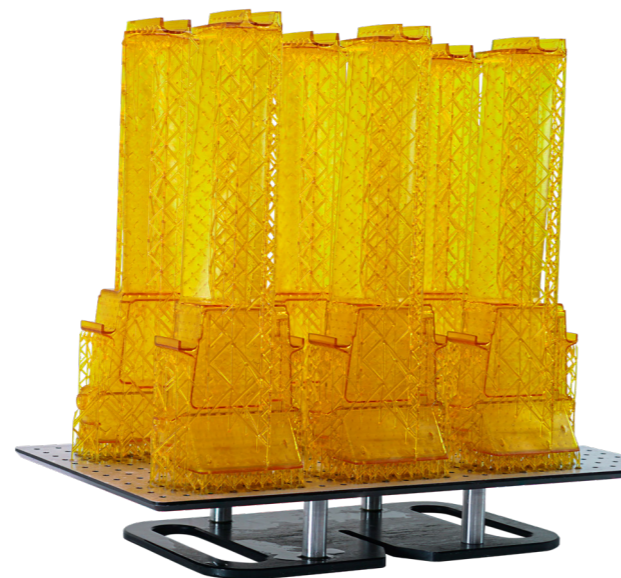
## Daylight Magna Translucent

Our new Magna Translucent is specially formulated for making objects with high tensile strength and hardness, fast. The resin is optimised for mass manufacture, being both very fast to print and fast to post expose, delivering a dry surface finish. Magna Translucent can be printed at up to 350 µm layers (geometry dependent).

### Colours



Score out of 100 when compared to other resins from our range



# UV Resins



# UV LCD Resins



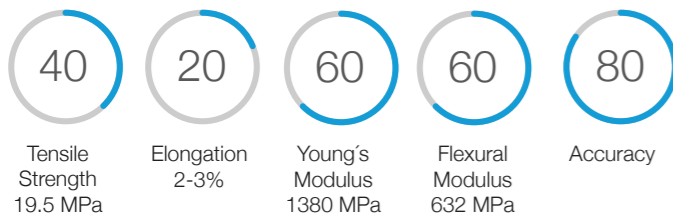
## UV LCD DENTAL MODEL

Our UV LCD Dental Model resin has been formulated to create high resolution dental models on the Liquid Crystal Dental 3D printer. This resin has been developed in conjunction with dental technologists to derive an optimal colour, feel and working characteristics. Ideal for orthodontic, study and working models. The prints show minimal shrinkage with >90% of scanned models exhibiting a tolerance of +/- 60µm across the bed. Printed dental parts exhibit extremely high tensile properties and hardness, allowing for their use as a working model or a vacuum forming model. Dental model resin provides excellent print performance on the LC Dental printer range, allowing you to print dry dental models with crisp detail.

**Compatible Printer:**

LC Dental

**Colours**



Score out of 100 when compared to other resins from our range



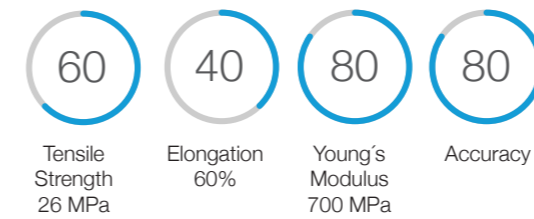
## UV LCD Firm

Our UV LCD Firm resin creates parts that hold their shape while also being able to bend and flex slightly without snapping. Resin delivers mechanical properties similar to polypropylene.

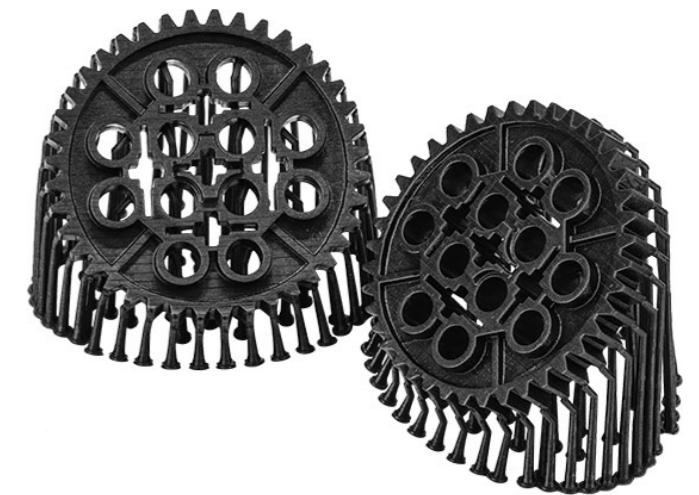
**Compatible Printers:**

Compatible with UV LCD printers such as Anycubic Photon, Wanhao D7, Phrozen Shuffle, Sparkmaker, Kudo Bean

**Colours**



Score out of 100 when compared to other resins from our range



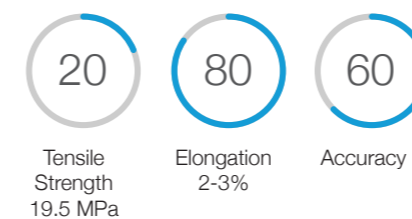
## UV LCD Flexible

Our UV LCD Flexible resin produces soft, flexible parts. Objects can be stretched without snapping or breaking. Lattice or hollow structures can be squashed and will return to their original shape afterwards.

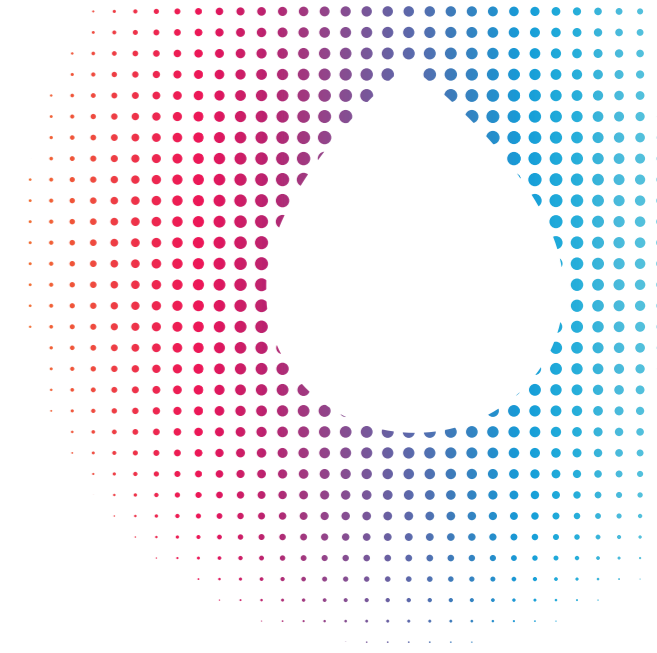
**Compatible Printers:**

Compatible with UV LCD printers such as Anycubic Photon, Wanhao D7, Phrozen Shuffle, Sparkmaker, Kudo Bean

**Colours**



Score out of 100 when compared to other resins from our range





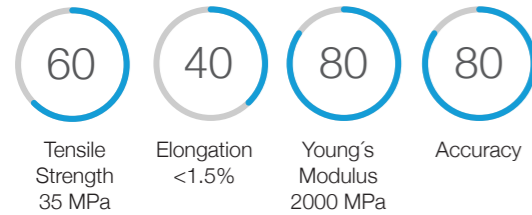
 UV LCD Hard

Our UV LCD hard resin delivers crisp details, high stiffness and high hardness. Parts will not deform when pressure is applied.

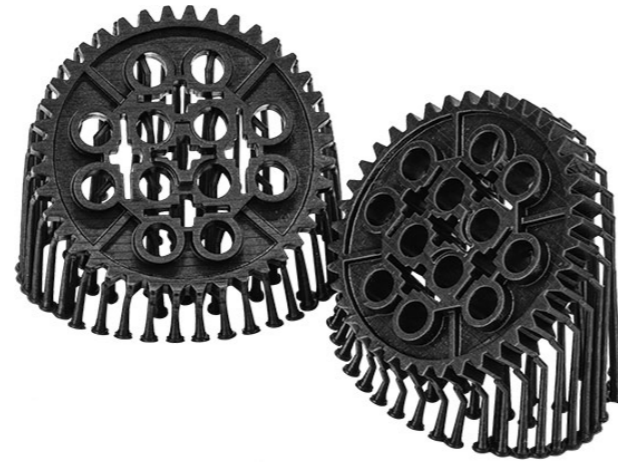
**Compatible Printers:**

Compatible with UV LCD printers such as Anycubic Photon, Wanhao D7, Phrozen Shuffle, Sparkmaker, Kudo Bean

**Colours.**



Score out of 100 when compared to other resins from our range



# UV DLP Resins

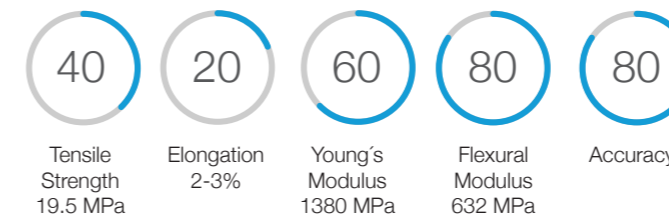
 UV DLP Castable

Our UV DLP Castable creates highly accurate jewellery parts for investment casting. Printed parts exhibit fine detail and provide smooth, crisp finish on the cast parts. Virtually no ash or residue and limited expansion.

**Compatible Printers:**

Compatible with UV DLP Printers such as Flashforge Hunter, MoonRay, Asiga Pro2, Asiga Pico, Envisontec Perfactory

**Colours.**



Score out of 100 when compared to other resins from our range



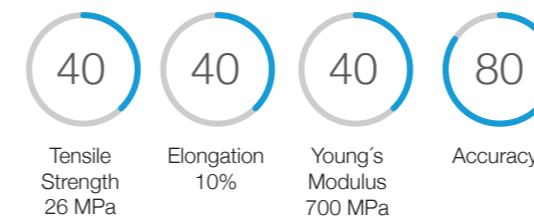
 UV DLP Firm

Our UV DLP Firm resin creates parts that hold their shape while also being able to bend and flex slightly without snapping. Resin delivers mechanical properties similar to polypropylene.

**Compatible Printers:**

Compatible with UV DLP Printers such as Flashforge Hunter, MoonRay, Asiga Pro2, Asiga Pico, Envisontec Perfactory

**Colours**



Score out of 100 when compared to other resins from our range



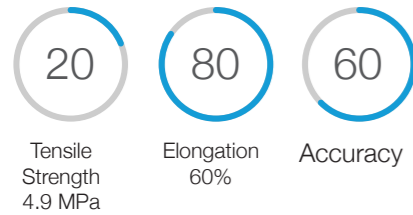
## UV DLP Flexible

Our UV LCD Flexible resin produces soft, flexible parts. Objects can be stretched without snapping or breaking. Lattice or hollow structures can be squashed and will return to their original shape afterwards.

### Compatible Printers:

Compatible with UV DLP Printers such as Flashforge Hunter, MoonRay, Asiga Pro2, Asiga Pico, Envisontec Perfactory

### Colours



Score out of 100 when compared to other resins from our range



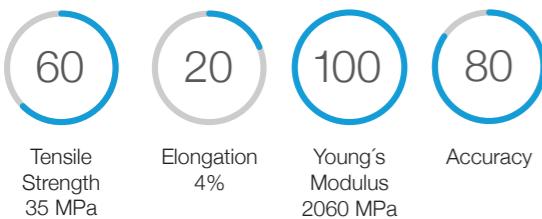
## UV DLP Hard

Our UV DLP Hard resin will make parts exhibiting crisp detail, high stiffness and high hardness. Parts won't deform when pressure is applied.

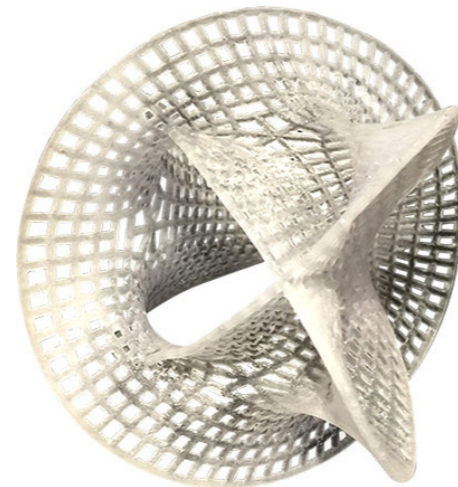
### Compatible Printers:

Compatible with UV DLP Printers such as Flashforge Hunter, MoonRay, Asiga Pro2, Asiga Pico, Envisontec Perfactory

### Colours



Score out of 100 when compared to other resins from our range



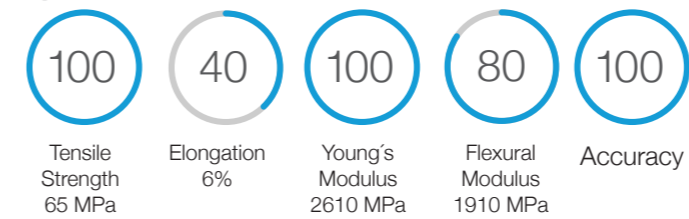
## UV DLP High Tensile

Our UV DLP High Tensile resin is ideal for making objects with high tensile strength and hardness. Objects cannot be bent or compressed easily and will withstand considerable force without deflection.

### Compatible Printers:

Compatible with UV DLP Printers such as Flashforge Hunter, MoonRay, Asiga Pro2, Asiga Pico, Envisontec Perfactory

### Colours



Score out of 100 when compared to other resins from our range



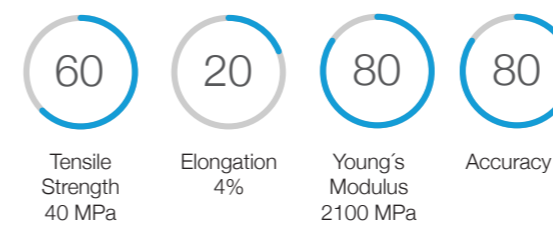
## UV DLP Poliglass

Our UV DLP Poliglass has been formulated to make parts that resemble glass. They will have a smooth surface finish and high transparency. In order to achieve a glossy surface finish, we recommend spraying with clear lacquer after post processing.

### Compatible Printers:

Compatible with UV DLP Printers such as Flashforge Hunter, MoonRay, Asiga Pro2, Asiga Pico, Envisontec Perfactory

### Colours.



Score out of 100 when compared to other resins from our range



# UV Laser Resins

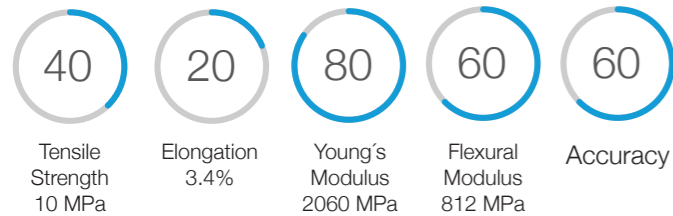
## UV Laser Castable

Our UV Laser Castable creates highly accurate jewellery parts for investment casting. Printed parts exhibit fine detail and provide smooth, crisp finish on the cast parts. Virtually no ash or residue and limited expansion.

**Compatible Printers:**

Compatible with UV Laser printers such as Form 1+, Form 2, Peopoly Maoi, Nobel

**Colours**



Score out of 100 when compared to other resins from our range



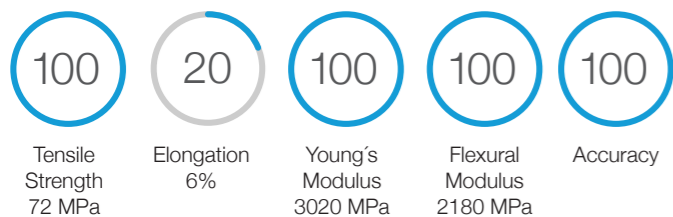
## UV Laser Dental Model

Our UV Laser Dental Model resin has been formulated to create high resolution dental models. This resin has been developed in conjunction with dental technologists to derive an optimal colour, feel and working characteristics. Ideal for orthodontic, study and working models.

**Compatible Printer:**

Compatible with UV Laser printers such as Form 1+, Form 2, Peopoly Maoi, Nobel

**Colours**



Score out of 100 when compared to other resins from our range



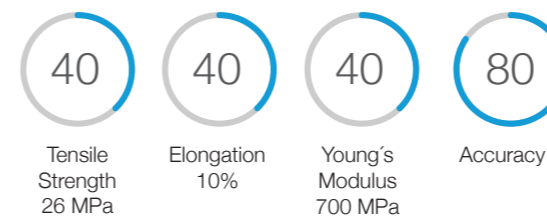
## UV Laser Firm

Our UV Laser Firm resin creates parts that hold their shape while also being able to bend and flex slightly without snapping. Resin delivers mechanical properties similar to polypropylene.

**Compatible Printer:**

Compatible with UV Laser printers such as Form 1+, Form 2, Peopoly Maoi, Nobel

**Colours**



Score out of 100 when compared to other resins from our range



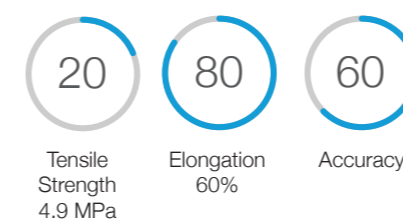
## UV Laser Flexible

Our UV Laser Flexible resin produces soft, flexible parts. Objects can be stretched without snapping or breaking. Lattice or hollow structures can be squashed and will return to their original shape afterwards.

**Compatible Printer:**

Compatible with UV Laser printers such as Form 1+, Form 2, Peopoly Maoi, Nobel

**Colours**



Score out of 100 when compared to other resins from our range



# UV Laser Resins

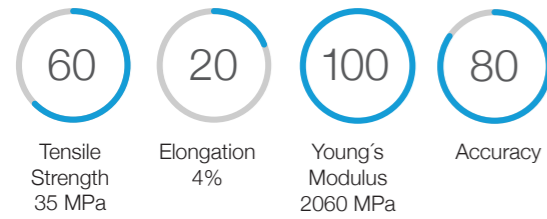
## UV Laser Hard

Our UV Laser Hard resin will make parts exhibiting crisp detail, high stiffness and high hardness. Parts won't deform when pressure is applied.

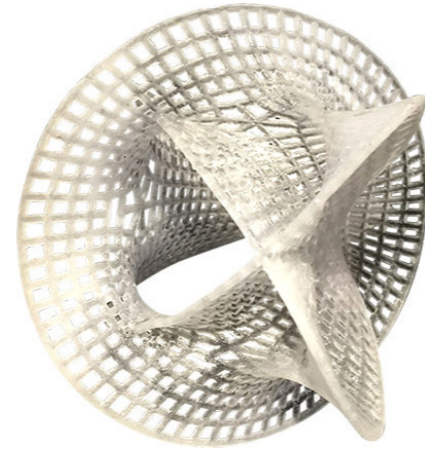
**Compatible Printer:**

Compatible with UV Laser printers such as Form 1+, Form 2, Peopoly Maoi, Nobel

**Colours**



Score out of 100 when compared to other resins from our range



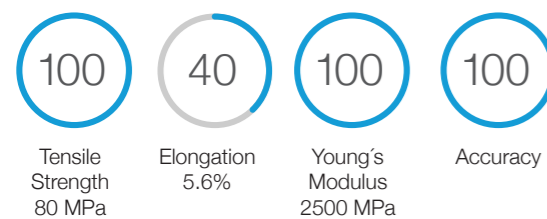
## UV Laser High Tensile

Our UV Laser High Tensile resin is ideal for making objects with high tensile strength and hardness. Objects cannot be bent or compressed easily and will withstand considerable force without deflection.

**Compatible Printer:**

Compatible with UV Laser printers such as Form 1+, Form 2, Peopoly Maoi, Nobel

**Colours**



Score out of 100 when compared to other resins from our range



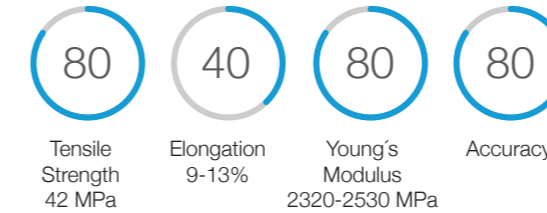
# UV 355 Resins

COMPATIBLE WITH UV 355 PRINTERS, SUCH AS 3D SYSTEMS VIPER

## UV 355 Castable

UV 355 Castable is optimised for investment casting applications. It is formulated to ensure no heavy metal impurities remain after burning. It is organic and does not expand significantly on heating giving reproducible cast parts while still enabling rapid printing and post processing. 355 Castable is versatile and can be used for prototyping without needing to swap out resins. Used in large format SLA machines, this resin is ideal for master patterns and prototype parts.

**Colours**



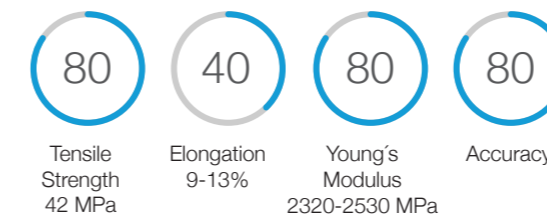
Score out of 100 when compared to other resins from our range



## UV 355 Hard Clear

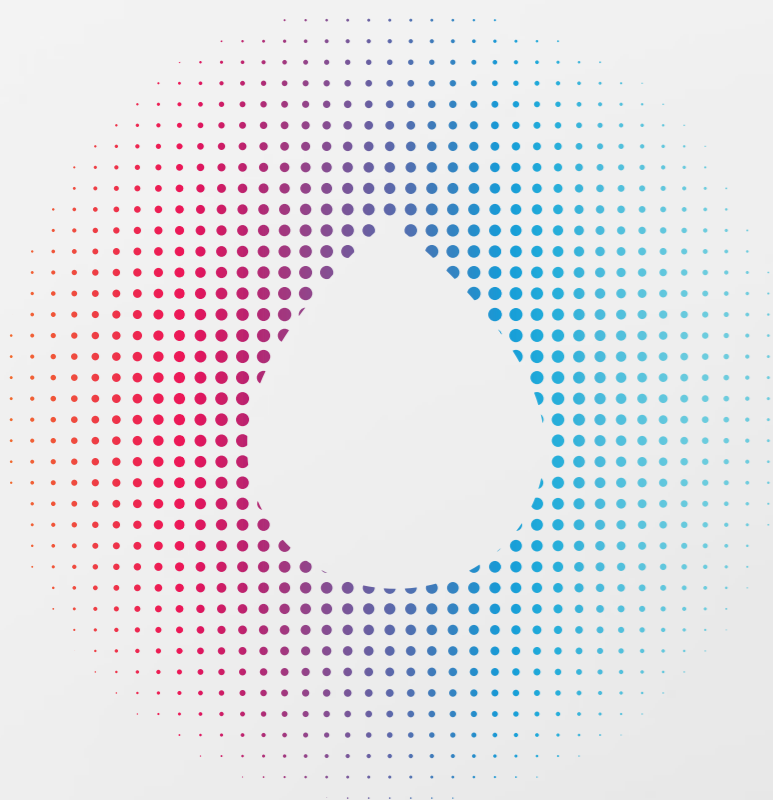
Our UV 355 Hard is specially formulated to produce accurate, clear prints with superb definition and strong mechanical properties. Parts exhibit similar mechanical and haptic properties to injection moulded ABS or PBT. UV 355 Hard enables fast printing and post processing. UV 355 Hard is chosen by designers who want high clarity in highly detailed parts or engineers seeking hard durable prototype parts.

**Colours**

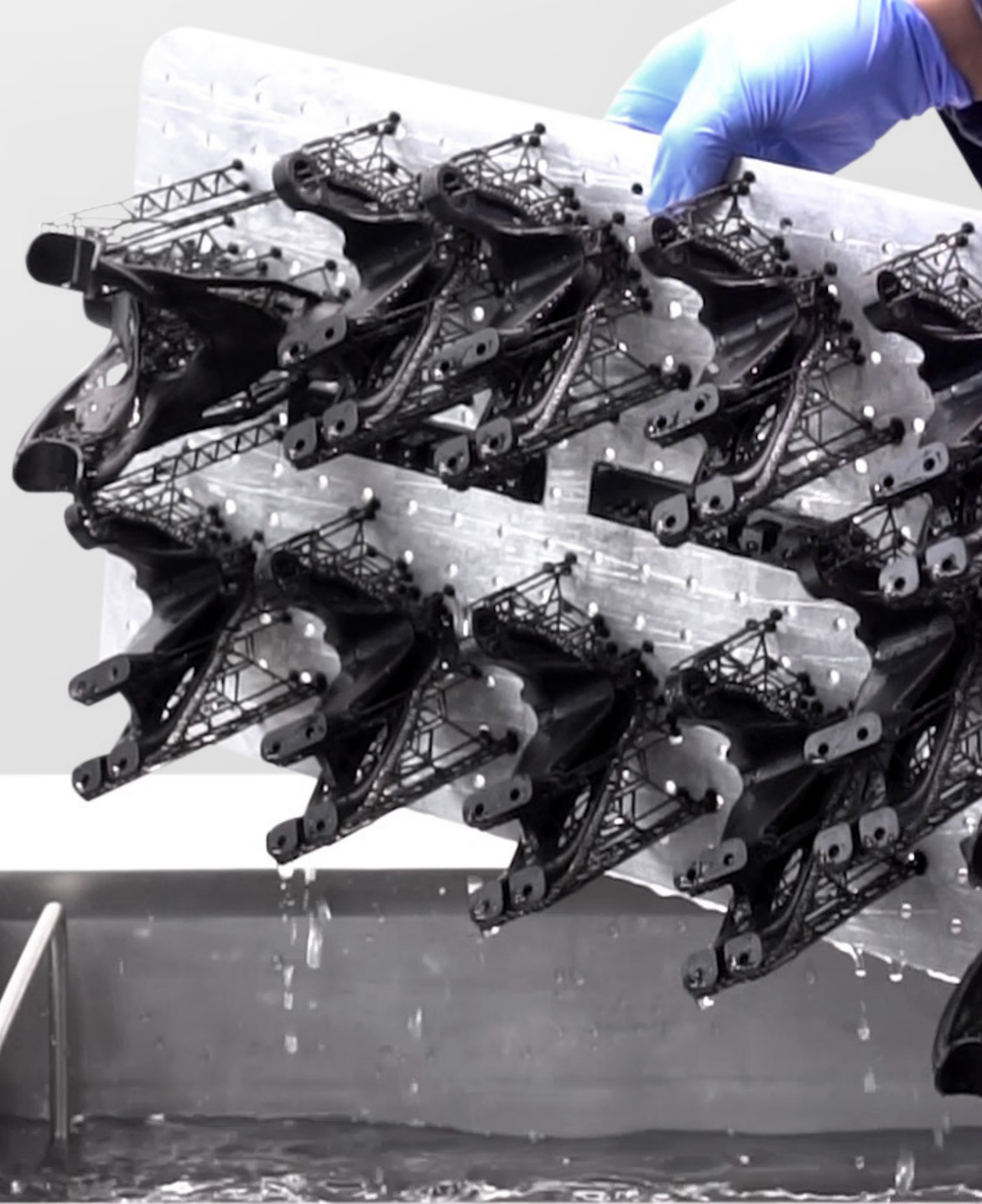


Score out of 100 when compared to other resins from our range





# Post Processing





## Ultrasonic cleaning power

No matter the size or complex of geometry, Photocentric Wash removes all excess resin residue from your printed models in minutes. It is designed to work with all of our Daylight, DLP, Laser and UV LCD resins, apart from our flexible resin range which should be cleaned with detergent and hot water.

## Clean parts & Platforms

Suitable for cleaning not just the large scale printed parts but also the print platforms, flexplates and more.

## Specs

Printer Compatibility	LC Pro, LC Magna
Dimensions	External: 760(H) x 650 (D) x 820(w) mm Internal: 500 (H) x 400 (D) x 300 (w) mm
Suggested Operating Environment	18-28 °C
Agitation Method	30 x 40kHz transducers
Ultrasonic capabilities	Equipped with 30 40kHz transducers capable of 1500W maximum power
weight	95kg

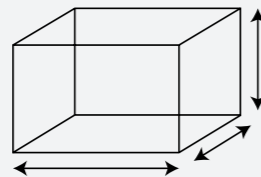
## Included Accesories

Lid
Tank
Basket
Power cable
Instruction manual
Outflow valve
Outflow pipe



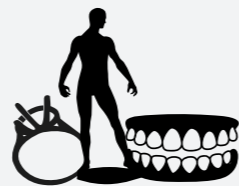
## 99L Capacity

Photocentric Cleaner volume to fill the wash unit



## Maximum Part Size

50cm x 40cm x 30cm



## 300 Prints

Number of prints per 99ltr of Photocentric Cleaner will clean in regular use without clean

1 Year warranty

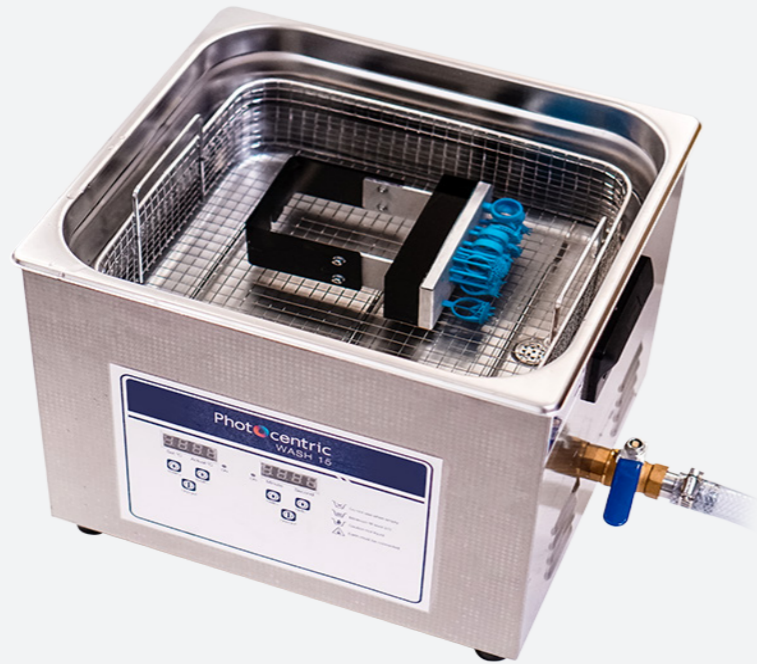


Photocentric  
WASH 15

## The Desktop Washing Solution



## Resin Cleaner



**5-15 Minutes**

Clean your parts in minimal time

Part on right washed with Photocentric Resin Cleaner compared to ipa on the left

### Fast cleaning. Precise results

Whatever the geometry or resin, Photocentric Cleaner removes all excess resin residue from your printed models in minutes. Photocentric Cleaner is specifically formulated to solubilize 3D photopolymers, delivering superior, mark-free results in comparison to using IPA. It is safe, non-flammable and carries no irritant status.

### 5-15 minutes and your models are clean

Quicker than IPA and other cleaning solutions

### Clean models, platforms and vats

Resin Cleaner is ideal for cleaning resin from your printer accessories as well

### Multiple use

No need to refill or filter after every printer

### White marks are no longer an issue

IPA can leave models with a cloudy white finish

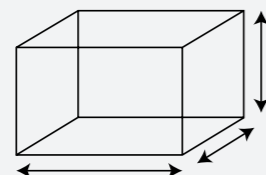
### Purchase Options

Available in 1ltr, 5ltr and 20 ltr bottles with non-drip cap



### 15L Capacity

Photocentric Cleaner volume to fill the wash unit



### Maximum Part Size

30cm x 27.5cm x 12cm



### 140 Prints

Number of prints per 15L of Photocentric Cleaner in regular use before changing

## Specs

### Printer Compatibility

LC Precision 1.5, LC HR2

### Dimensions

External: 280(H) x 340 (D) x 330(w) mm  
Internal: 120 (H) x 275 (D) x 300 (w) mm

### Suggested Operating Environment

18-28 °C

### Agitation Method

30 x 40kHz transducers

### Ultrasonic capabilities

Equipped with 30 40kHz transducers capable of 1500W maximum power

### weight

13kg

## Included Accesories

Lid

Tank

Basket

Power cable

Instruction manual

Outflow valve

Outflow pipe

Clip

Drainage cap

1 Year warranty



## Strengthen Parts Maximise Material Properties

Professional, reliable and tailored to the process. Our post-curing solutions strengt



### Large Chamber Volume

Transfer your parts from your Wash 99 to Cure L. The Cure L takes the full Magna platform eliminating the need to remove printed parts beforehand

### Time-Regulated Control

Curing times depend upon geometry and grade of resin

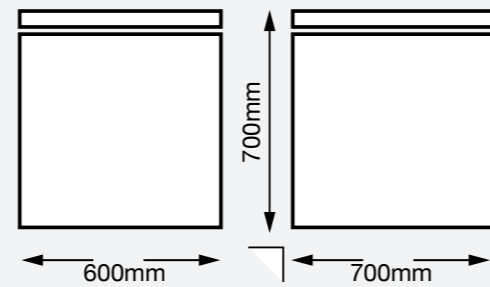
### Strong Parts with Peak Properties

15-120 minutes (dependent on resin type) your printed parts will be dry, strong with material properties at their full potential

## Specs

Dimensions	External: 700(H) x 600 (D) x 700(w) mm Internal: 550 (H) x 350 (D) x 500 (w) mm
System	User Interface
Display	Thermostat and timer control
Light Source	Full spectrum 100pc of led from 380nm up to 700nm
Power source	input: 110-240V
Heating	0-65 °C
Drying Time	15-120 minutes

1 Year warranty



### Easy to use

Transfer your parts from your Wash 15 to Cure M, ready for a quick and easy finishing process

### You're in control

Navigate with the microprocessor-controlled touch-screen display

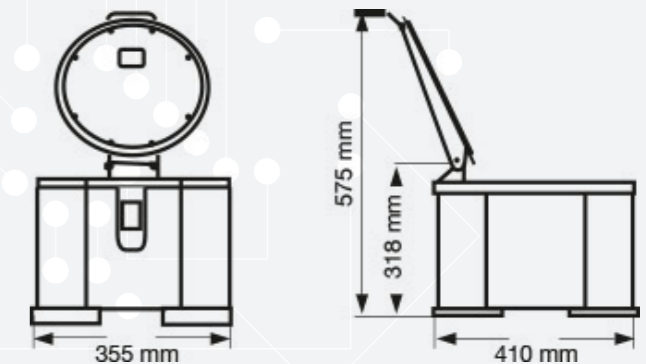
### Strong Parts with Peak Properties

15-120 minutes (dependent on resin type) your printed parts will be dry, strong with material properties at their full potential

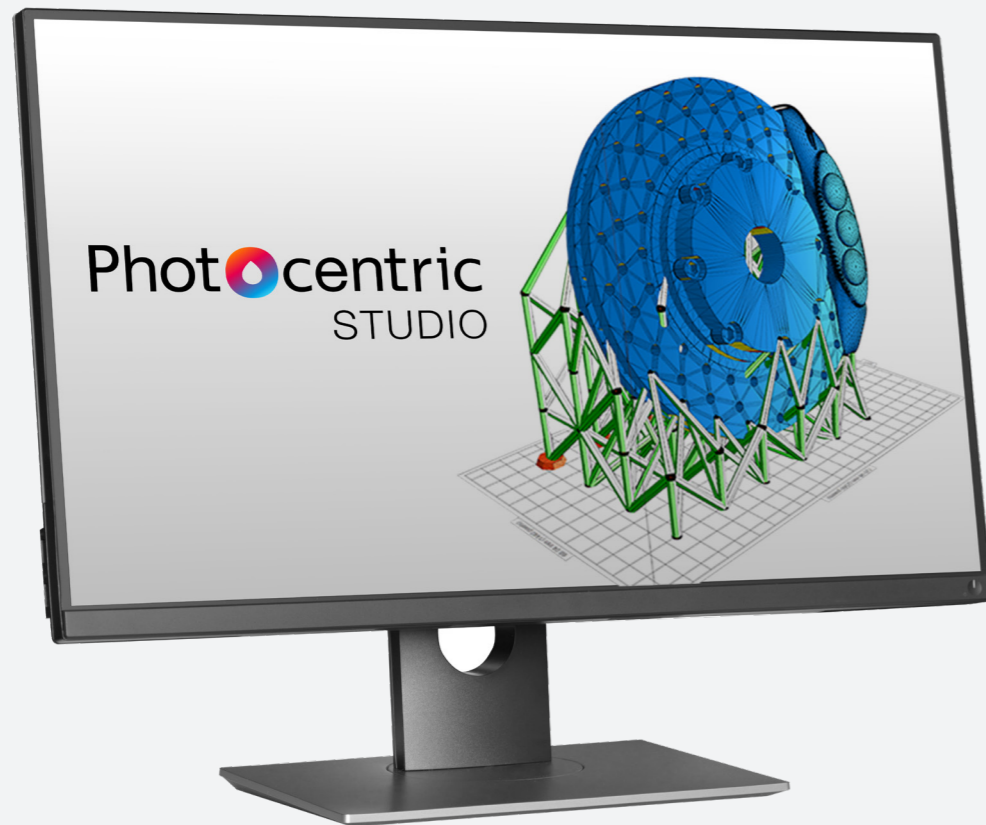
## Specs

Dimensions	External: 355(H) x 410 (D) x 350(w) mm Internal: 200 (H) x 200 (D) x 200 (w) mm
System	Microprocessor
Display	Tough Screen
Light Source	LED UV/405 and 365nm
Power source	input: 110-240V / 0.6A / 50-60 Hz
Heating	0-65 °C
Drying Time	10-140 minutes

1 Year warranty







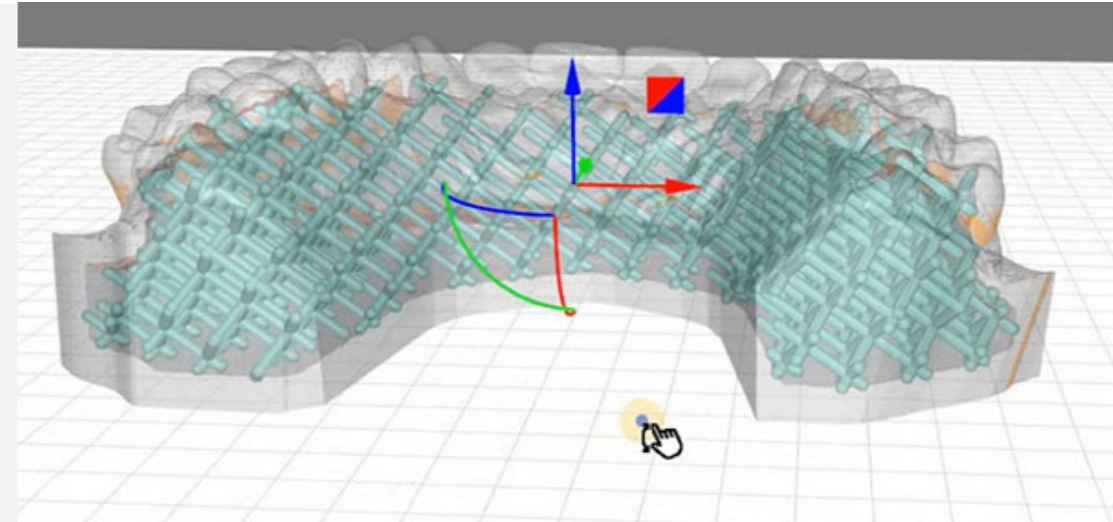
## Simplify the print experience

Modify, add support structures, use tools to make the most efficient use of the platform area and then control your machine from the software.

Rapid processing of large files and together with sophisticated features make this the software of choice for industry professionals.

## Aided productivity

- Automatic detection of critical areas that need supporting
- Automatic support generation and manual support editing with different support styles
- Automated batch processing and part nesting to maximise platform use
- Automatic and manual 3D model orientation, translation, scaling, copying and mirroring
- Models can be split and joined together
- Drain holes, hollowing and infill of models to reduce resin use
- Multi-level platform support for large print volumes.

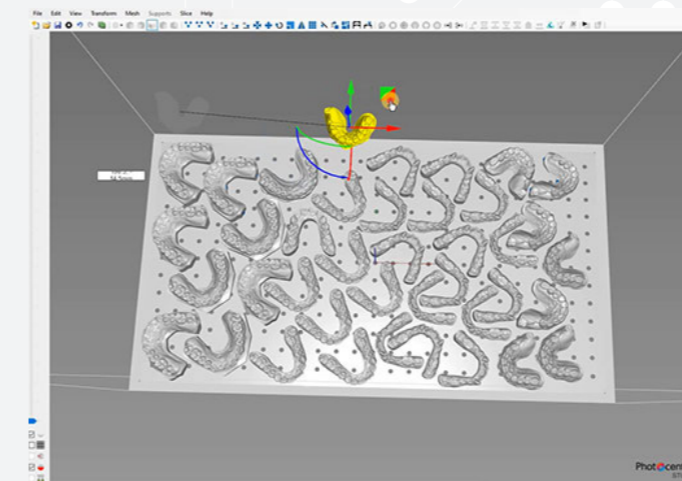


## High Level Print Quality

- Our Liquid Crystal printers can deliver scanned resolutions greater than the pixel pitch of the screen because of our light engine and Studio's application of anti-aliasing during the slicing phase.
- Supplied with optimised printer settings and resin profiles

## Simplify Your Workflow

- Import and export in different formats including stl, amf and obj.
- Photocentric Studio Project files p3d allow customers reuse models and retain settings between sessions.
- Personalise your Studio user interface
- Undo and redo facility assists editing



## Minimum PC Requirements:

- Windows 7, 8 or 10
- Minimum 2.0 Ghz processor speed 2 cores. Recommended 4 cores
- GPU capable of running opengl version 3.0 or higher. Eg. Nvidia GeForce 1050 or higher.
- .net framework version 4.0
- 64bit system: minimum 2 GB of RAM, recommended 4 GB
- 32bit system: minimum 1 GB of RAM, recommended 2 GB